

Data Path : Z:\voasrv\HPCHEM1\MSVOA_D\Data\VD121423\
 Data File : VD077874.D
 Acq On : 14 Dec 2023 10:56
 Operator : RP/MD
 Sample : 05788-01
 Misc : 5.00G/10ml/MSVOA_D/SOIL
 ALS Vial : 3 Sample Multiplier: 1

Instrument :
 MSVOA_D
 ClientSampleId :

Quant Time: Dec 15 07:12:20 2023
 Quant Method : Z:\voasrv\HPCHEM1\MSVOA_D\Method\SFAMDLM112923SMA.M
 Quant Title : SFAM01.0
 QLast Update : Wed Dec 06 00:24:24 2023
 Response via : Initial Calibration

Compound	R.T.	QIon	Response	Conc	Units	Dev(Min)
Internal Standards						
1) 1,4-Difluorobenzene	8.775	114	268531	25.000	ug/L	0.00
28) Chlorobenzene-d5	11.581	117	240763	25.000	ug/L	0.00
58) 1,4-Dichlorobenzene-d4	13.522	152	117862	25.000	ug/L	0.00
System Monitoring Compounds						
4) Vinyl Chloride-d3	2.281	65	131987	18.024	ug/L	0.00
Spiked Amount	25.000	Range 30 - 150	Recovery =	72.080%		
7) Chloroethane-d5	2.805	69	126599	21.689	ug/L	0.00
Spiked Amount	25.000	Range 30 - 150	Recovery =	86.760%		
11) 1,1-Dichloroethene-d2	3.928	65	35887	18.900	ug/L	0.00
Spiked Amount	25.000	Range 45 - 110	Recovery =	75.600%		
21) 2-Butanone-d5	6.987	46	43972	47.511	ug/L	0.00
Spiked Amount	50.000	Range 20 - 135	Recovery =	95.020%		
24) Chloroform-d	7.575	84	186194	25.727	ug/L	0.00
Spiked Amount	25.000	Range 40 - 150	Recovery =	102.920%		
26) 1,2-Dichloroethane-d4	8.234	65	91974	25.082	ug/L	0.00
Spiked Amount	25.000	Range 70 - 130	Recovery =	100.320%		
32) Benzene-d6	8.204	84	364349	25.127	ug/L	0.00
Spiked Amount	25.000	Range 20 - 135	Recovery =	100.520%		
36) 1,2-Dichloropropane-d6	9.210	67	111807	25.271	ug/L	0.00
Spiked Amount	25.000	Range 70 - 120	Recovery =	101.080%		
41) Toluene-d8	10.269	98	336452	25.209	ug/L	0.00
Spiked Amount	25.000	Range 30 - 130	Recovery =	100.840%		
43) trans-1,3-Dichloroprop...	10.528	79	48647	24.865	ug/L	0.00
Spiked Amount	25.000	Range 30 - 135	Recovery =	99.440%		
47) 2-Hexanone-d5	10.875	63	40293	52.851	ug/L	0.00
Spiked Amount	50.000	Range 20 - 135	Recovery =	105.700%		
56) 1,1,2,2-Tetrachloroeth...	12.651	84	91349	28.572	ug/L	0.00
Spiked Amount	25.000	Range 45 - 120	Recovery =	114.280%		
66) 1,2-Dichlorobenzene-d4	13.816	152	104889	24.876	ug/L	0.00
Spiked Amount	25.000	Range 75 - 120	Recovery =	99.520%		
Target Compounds						
12) 1,1-Dichloroethene	3.952	96	132712	36.332	ug/L	90
13) Acetone	4.028	43	76367	64.401	ug/L	95
16) Methylene chloride	4.805	84	108641	22.785	ug/L	92
17) trans-1,2-Dichloroethene	5.322	96	300831	78.990	ug/L	97
18) Methyl tert-butyl Ether	5.322	73	614106	73.148	ug/L	97
19) 1,1-Dichloroethane	6.116	63	162781	22.678	ug/L	99
20) cis-1,2-Dichloroethene	7.087	96	182302	43.076	ug/L	94
22) 2-Butanone	7.087	43	172800	129.473	ug/L #	58
25) Chloroform	7.599	83	196629	27.825	ug/L	96
27) 1,2-Dichloroethane	8.328	62	257379	58.228	ug/L	97
33) Benzene	8.251	78	1253747	80.005	ug/L	100
34) Trichloroethene	9.028	95	368111	94.630	ug/L	98
37) 1,2-Dichloropropane	9.304	63	344700	84.365	ug/L	100
39) cis-1,3-Dichloropropene	10.016	75	298035	46.710	ug/L	94
40) 4-Methyl-2-pentanone	10.157	43	153209	67.953	ug/L	94
44) trans-1,3-Dichloropropene	10.551	75	202632	38.022	ug/L	99
46) Tetrachloroethene	10.810	164	69289	22.090	ug/L	95
49) Dibromochloromethane	11.075	129	128151	39.276	ug/L	97
50) 1,2-Dibromoethane	11.181	107	192742	72.833	ug/L	97

Data Path : Z:\voasrv\HPCHEM1\MSVOA_D\Data\VD121423\
 Data File : VD077874.D
 Acq On : 14 Dec 2023 10:56
 Operator : RP/MD
 Sample : 05788-01
 Misc : 5.00G/10ml/MSVOA_D/SOIL
 ALS Vial : 3 Sample Multiplier: 1

Instrument :
 MSVOA_D
 ClientSampleId :

Quant Time: Dec 15 07:12:20 2023
 Quant Method : Z:\voasrv\HPCHEM1\MSVOA_D\Method\SFAMDLM112923SMA.M
 Quant Title : SFAM01.0
 QLast Update : Wed Dec 06 00:24:24 2023
 Response via : Initial Calibration

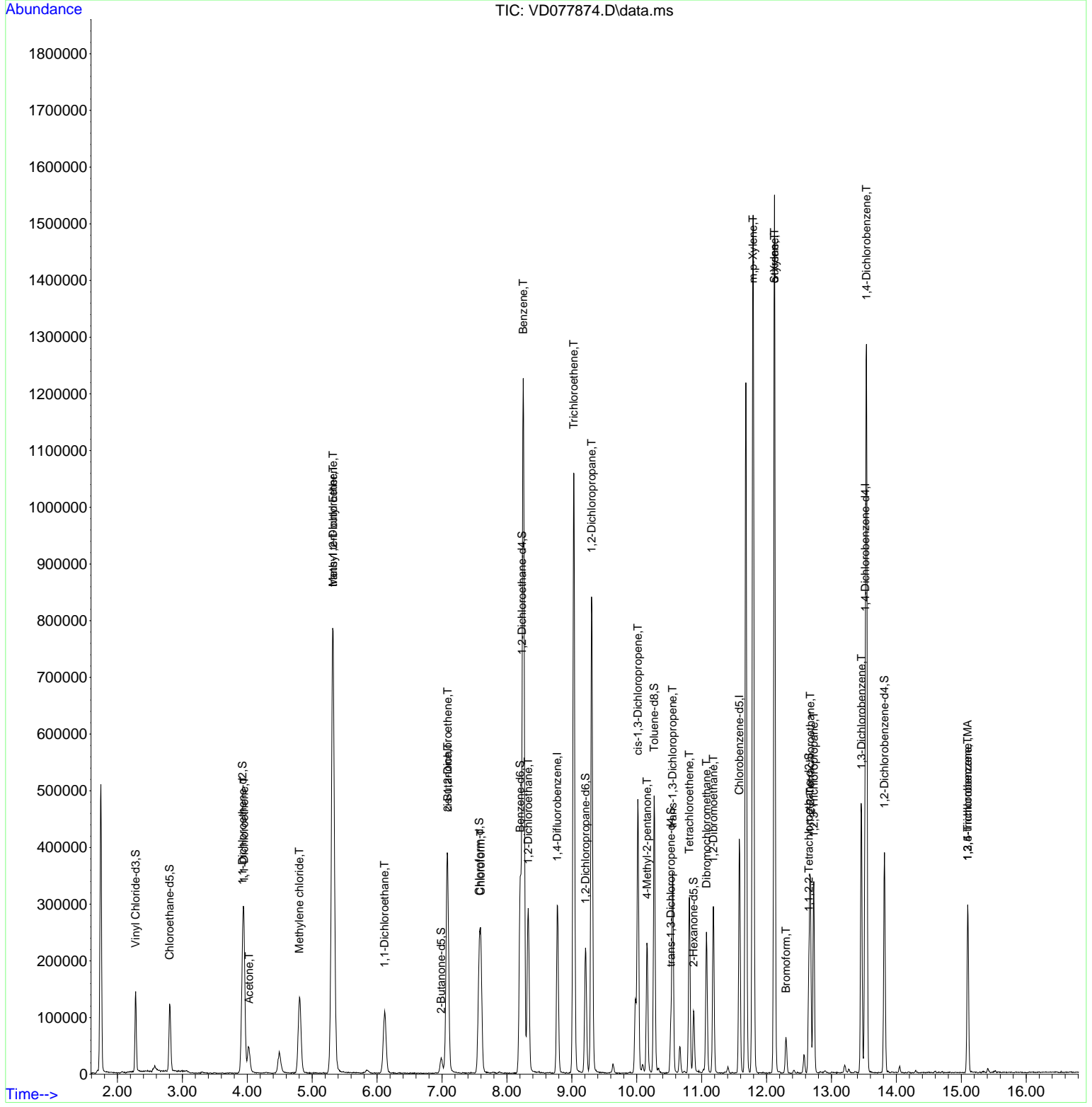
Compound	R.T.	QIon	Response	Conc	Units	Dev(Min)
53) m,p-Xylene	11.792	106	493290	70.753	ug/L	98
54) o-Xylene	12.122	106	420548	63.028	ug/L	98
55) Styrene	12.122	104	22186	1.900	ug/L #	1
57) 1,1,2,2-Tetrachloroethane	12.675	83	169111	52.011	ug/L	99
59) Bromoform	12.298	173	28317	14.521	ug/L #	98
61) 1,2,3-Trichloropropane	12.728	75	139072	64.149	ug/L	98
64) 1,3-Dichlorobenzene	13.463	146	199692	26.248	ug/L	97
65) 1,4-Dichlorobenzene	13.539	146	505323	64.009	ug/L	98
69) 1,3,5-Trichlorobenzene	15.098	180	94748	18.289	ug/L	99
70) 1,2,4-trichlorobenzene	15.098	180	94748	21.544	ug/L	99

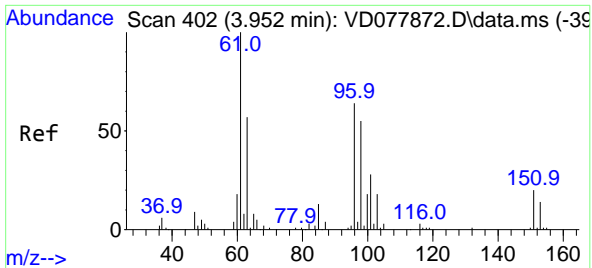
(#) = qualifier out of range (m) = manual integration (+) = signals summed

Data Path : Z:\voasrv\HPCHEM1\MSVOA_D\Data\VD121423\
 Data File : VD077874.D
 Acq On : 14 Dec 2023 10:56
 Operator : RP/MD
 Sample : 05788-01
 Misc : 5.00G/10ml/MSVOA_D/SOIL
 ALS Vial : 3 Sample Multiplier: 1

Instrument :
 MSVOA_D
 ClientSampleId :

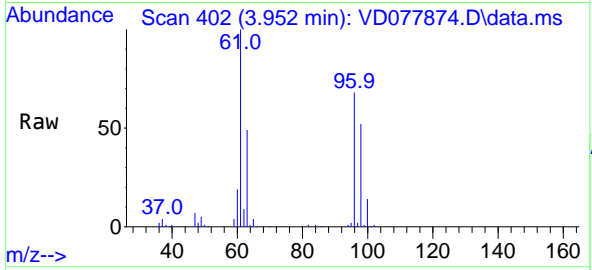
Quant Time: Dec 15 07:12:20 2023
 Quant Method : Z:\voasrv\HPCHEM1\MSVOA_D\Method\SFAMDLM112923SMA.M
 Quant Title : SFAM01.0
 QLast Update : Wed Dec 06 00:24:24 2023
 Response via : Initial Calibration





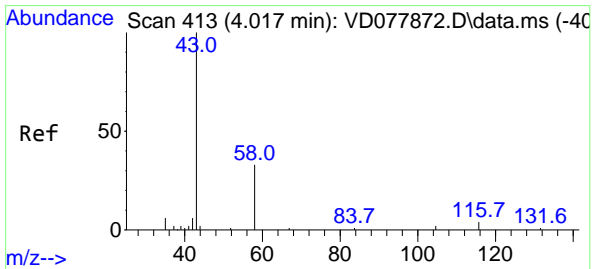
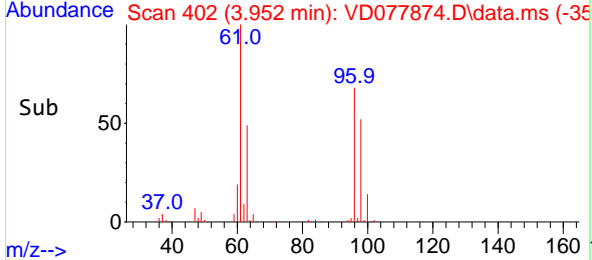
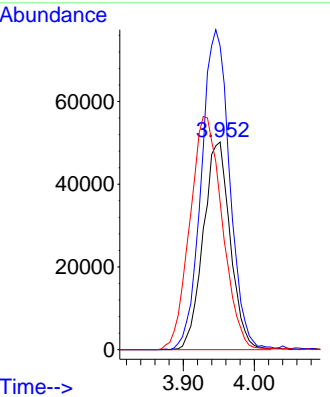
#12
 1,1-Dichloroethene
 Concen: 36.332 ug/L
 RT: 3.952 min Scan# 402
 Delta R.T. -0.000 min
 Lab File: VD077874.D
 Acq: 14 Dec 2023 10:56

Instrument : MSVOA_D
 ClientSampleId :



Tgt Ion: 96 Resp: 132712

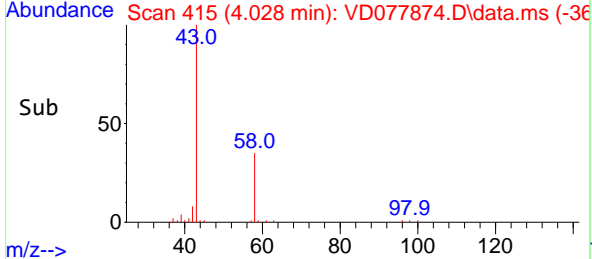
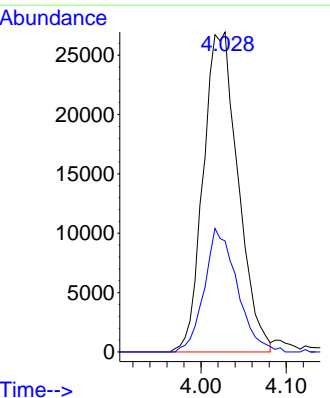
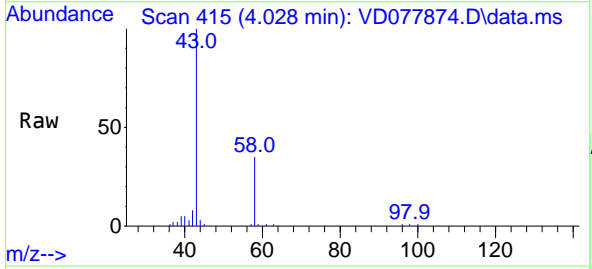
Ion	Ratio	Lower	Upper
96	100		
61	146.2	108.6	201.6
63	71.2	60.3	111.9

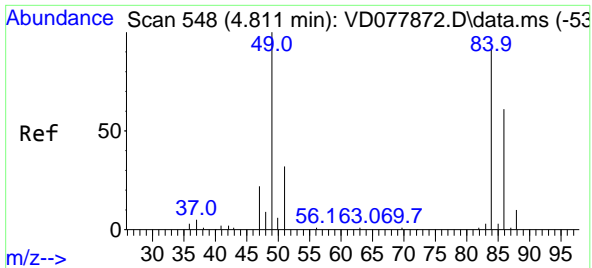


#13
 Acetone
 Concen: 64.401 ug/L
 RT: 4.028 min Scan# 415
 Delta R.T. -0.000 min
 Lab File: VD077874.D
 Acq: 14 Dec 2023 10:56

Tgt Ion: 43 Resp: 76367

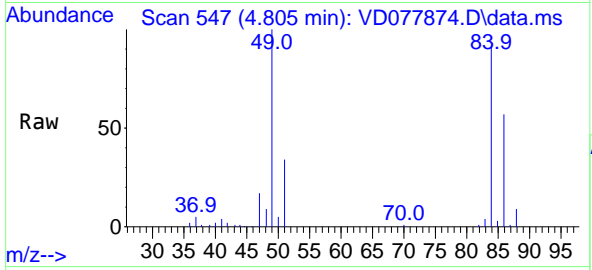
Ion	Ratio	Lower	Upper
43	100		
58	36.4	0.0	67.2





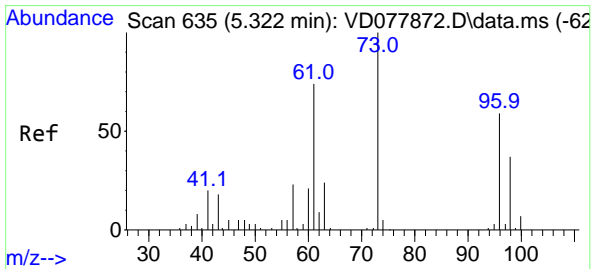
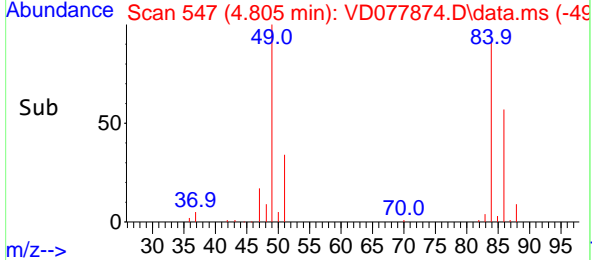
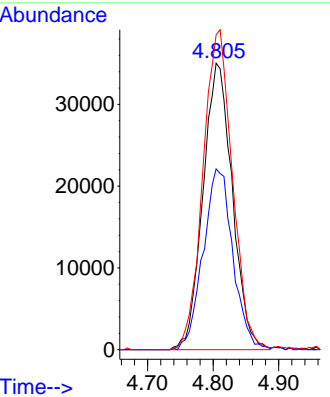
#16
 Methylene chloride
 Concen: 22.785 ug/L
 RT: 4.805 min Scan# 547
 Delta R.T. -0.006 min
 Lab File: VD077874.D
 Acq: 14 Dec 2023 10:56

Instrument : MSVOA_D
 ClientSampleId :

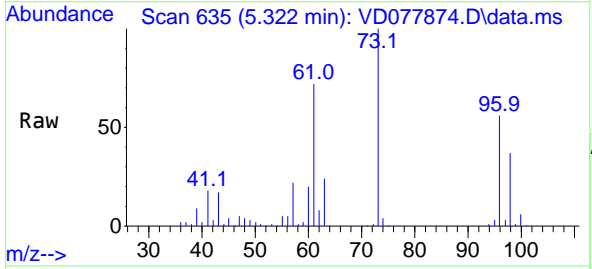


Tgt Ion: 84 Resp: 108641

Ion	Ratio	Lower	Upper
84	100		
86	63.1	40.1	74.5
49	109.9	83.2	154.6

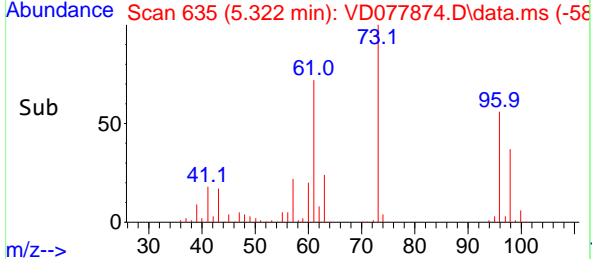
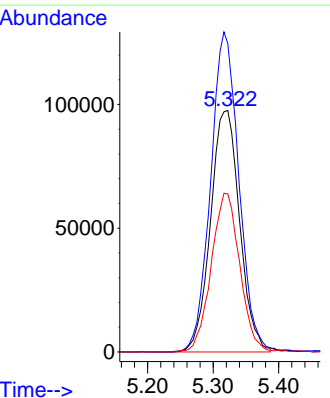


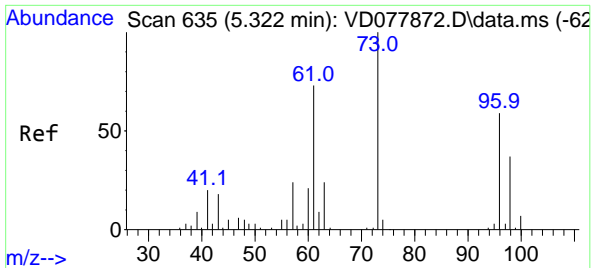
#17
 trans-1,2-Dichloroethene
 Concen: 78.990 ug/L
 RT: 5.322 min Scan# 635
 Delta R.T. 0.006 min
 Lab File: VD077874.D
 Acq: 14 Dec 2023 10:56



Tgt Ion: 96 Resp: 300831

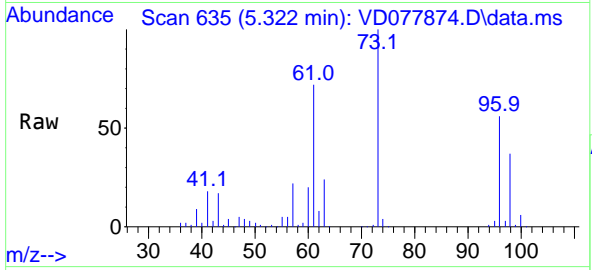
Ion	Ratio	Lower	Upper
96	100		
61	127.7	92.3	171.3
98	65.5	44.7	82.9





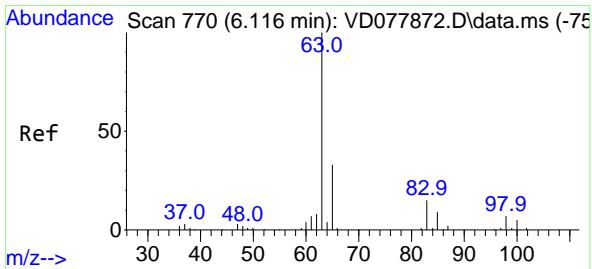
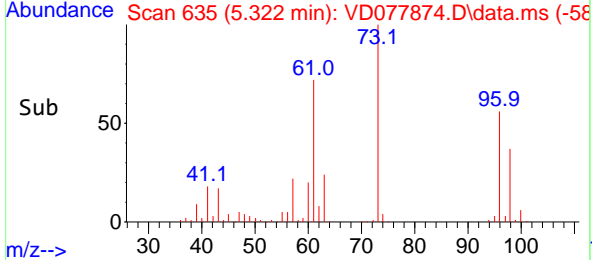
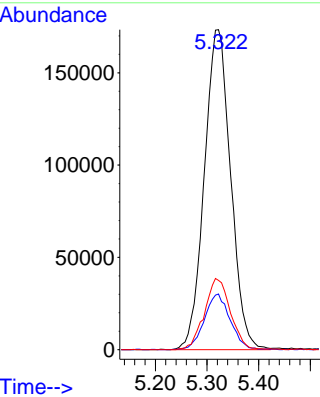
#18
 Methyl tert-butyl Ether
 Concen: 73.148 ug/L
 RT: 5.322 min Scan# 61
 Delta R.T. -0.000 min
 Lab File: VD077874.D
 Acq: 14 Dec 2023 10:56

Instrument :
 MSVOA_D
 ClientSampleId :



Tgt Ion: 73 Resp: 614106

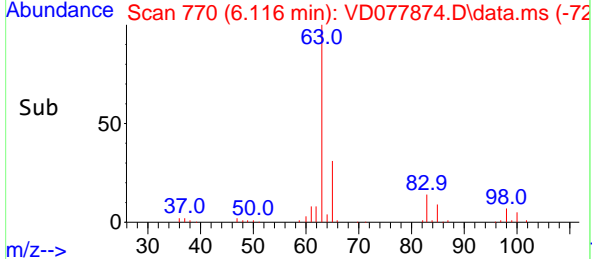
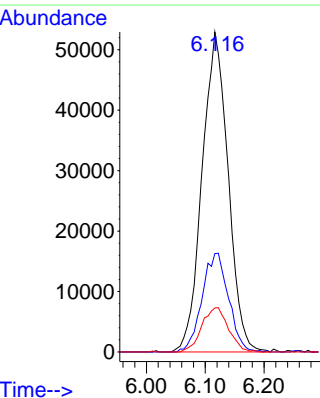
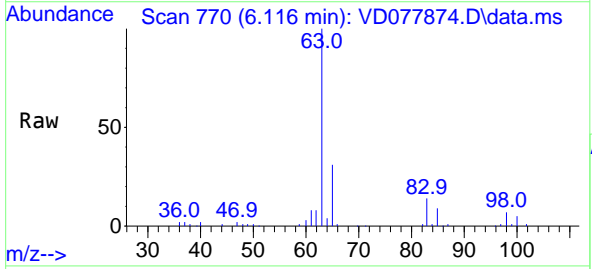
Ion	Ratio	Lower	Upper
73	100		
43	17.0	15.0	22.4
57	21.9	18.1	27.1

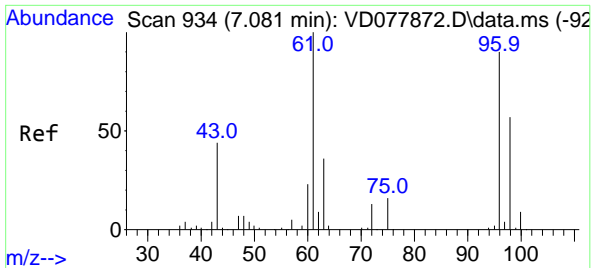


#19
 1,1-Dichloroethane
 Concen: 22.678 ug/L
 RT: 6.116 min Scan# 770
 Delta R.T. -0.006 min
 Lab File: VD077874.D
 Acq: 14 Dec 2023 10:56

Tgt Ion: 63 Resp: 162781

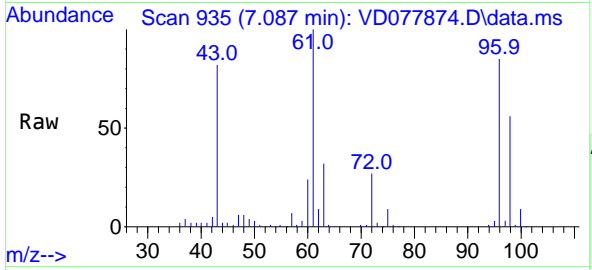
Ion	Ratio	Lower	Upper
63	100		
65	30.8	20.9	38.9
83	13.8	9.7	17.9



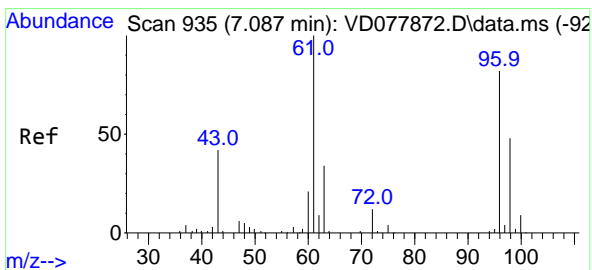
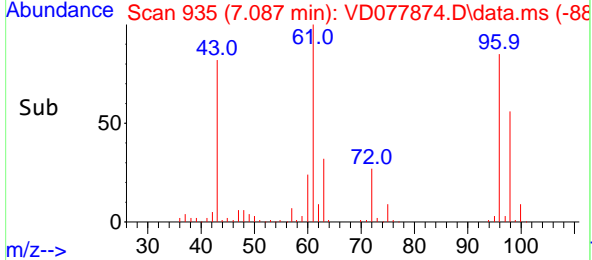
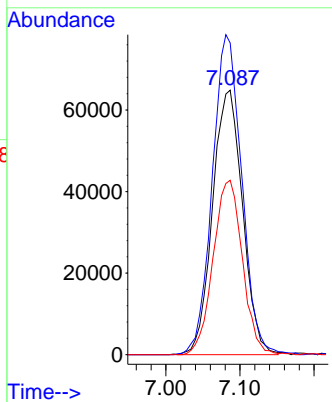


#20
 cis-1,2-Dichloroethene
 Concen: 43.076 ug/L
 RT: 7.087 min Scan# 91
 Delta R.T. -0.000 min
 Lab File: VD077874.D
 Acq: 14 Dec 2023 10:56

Instrument :
 MSVOA_D
 ClientSampleId :

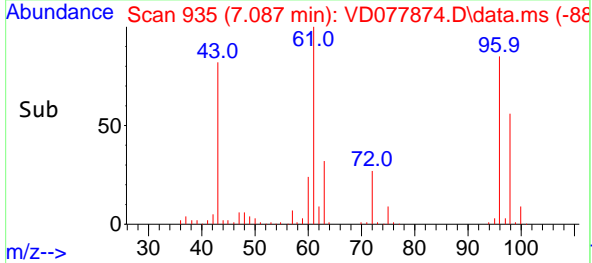
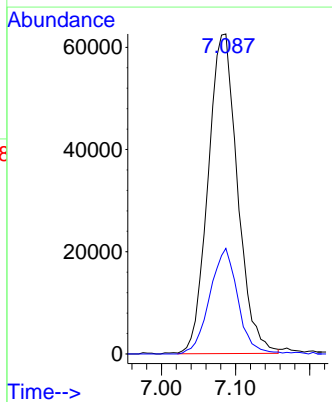
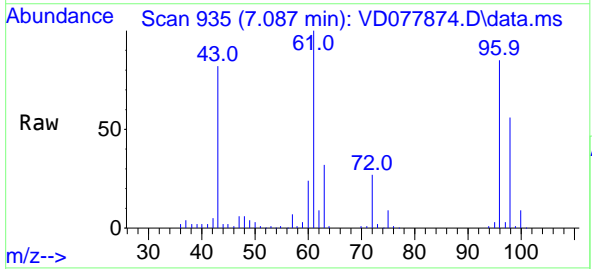


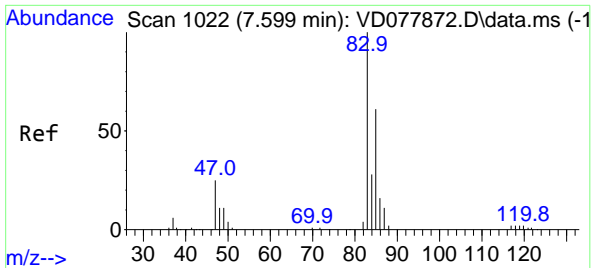
Tgt Ion: 96 Resp: 182302
 Ion Ratio Lower Upper
 96 100
 61 117.9 88.1 163.5
 98 65.9 44.1 81.9



#22
 2-Butanone
 Concen: 129.473 ug/L
 RT: 7.087 min Scan# 935
 Delta R.T. 0.006 min
 Lab File: VD077874.D
 Acq: 14 Dec 2023 10:56

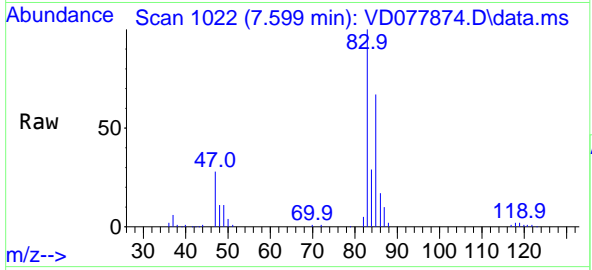
Tgt Ion: 43 Resp: 172800
 Ion Ratio Lower Upper
 43 100
 72 31.4 7.2 21.6#



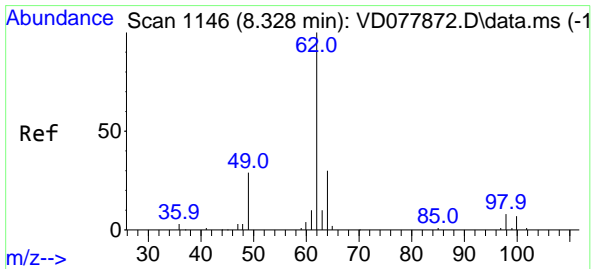
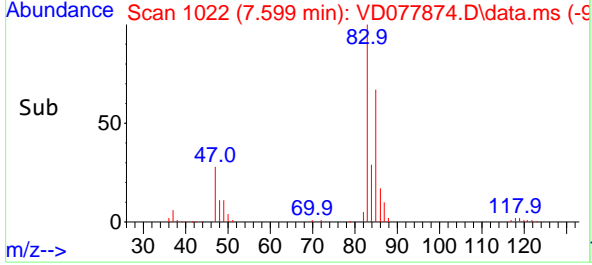
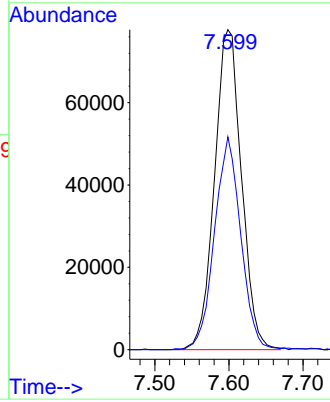


#25
 Chloroform
 Concen: 27.825 ug/L
 RT: 7.599 min Scan# 1022
 Delta R.T. -0.000 min
 Lab File: VD077874.D
 Acq: 14 Dec 2023 10:56

Instrument : MSVOA_D
 ClientSampleId :

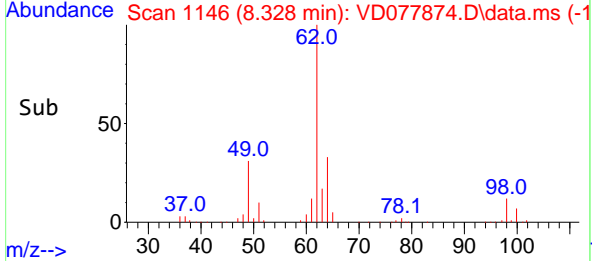
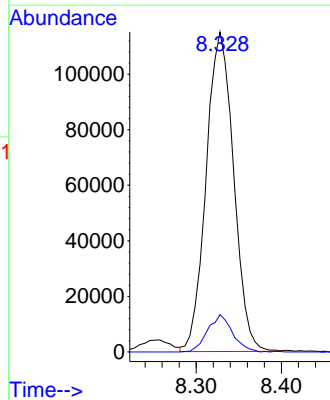
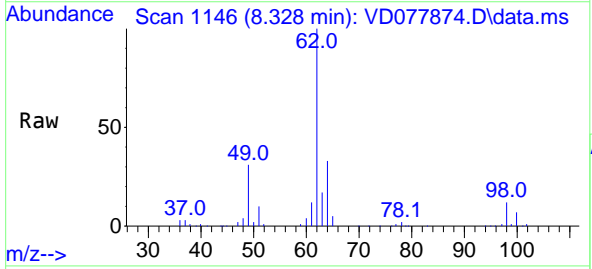


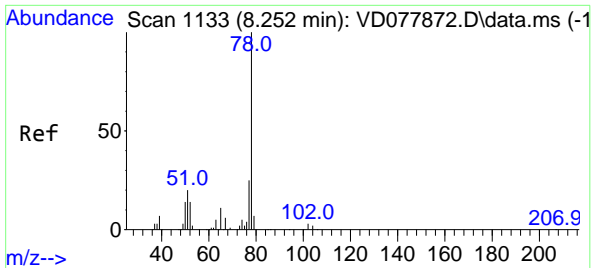
Tgt Ion: 83 Resp: 196629
 Ion Ratio Lower Upper
 83 100
 85 66.5 48.9 90.9



#27
 1,2-Dichloroethane
 Concen: 58.228 ug/L
 RT: 8.328 min Scan# 1146
 Delta R.T. -0.000 min
 Lab File: VD077874.D
 Acq: 14 Dec 2023 10:56

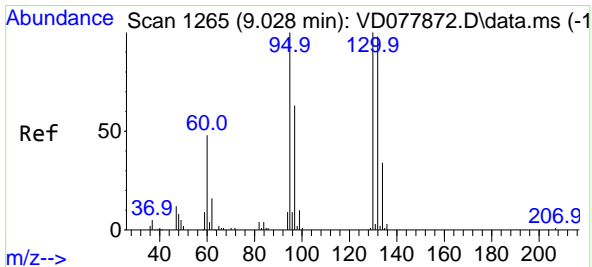
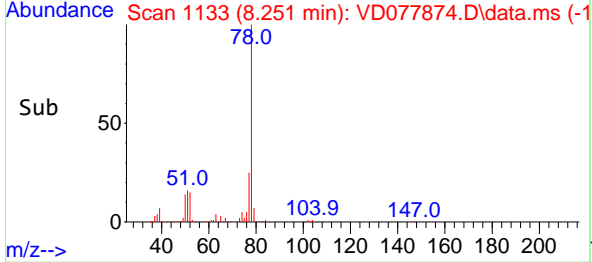
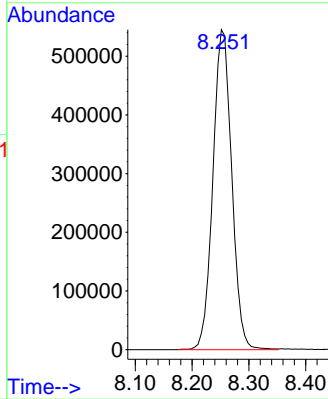
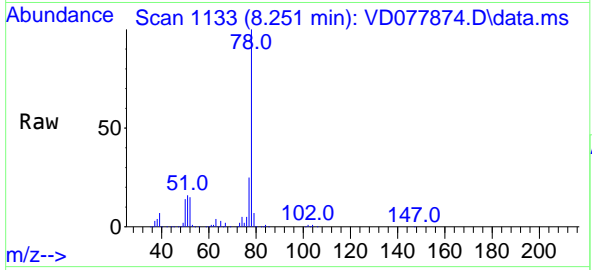
Tgt Ion: 62 Resp: 257379
 Ion Ratio Lower Upper
 62 100
 98 11.7 8.4 12.6



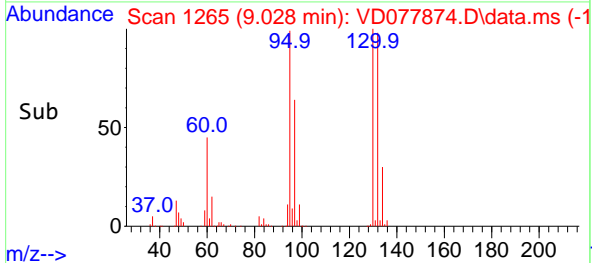
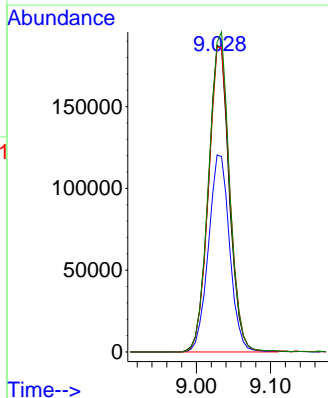
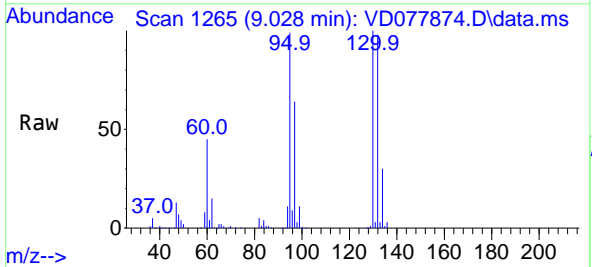


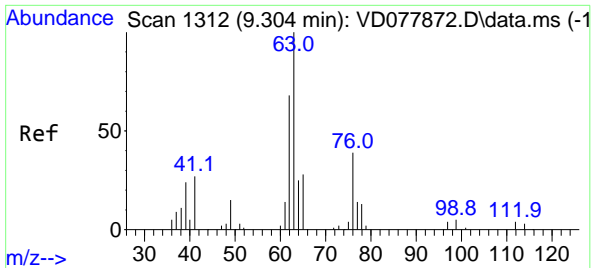
#33
Benzene
Concen: 80.005 ug/L
RT: 8.251 min Scan# 1133
Delta R.T. -0.006 min
Lab File: VD077874.D
Acq: 14 Dec 2023 10:56
Tgt Ion: 78 Resp: 1253747

Instrument : MSVOA_D
ClientSampleId :



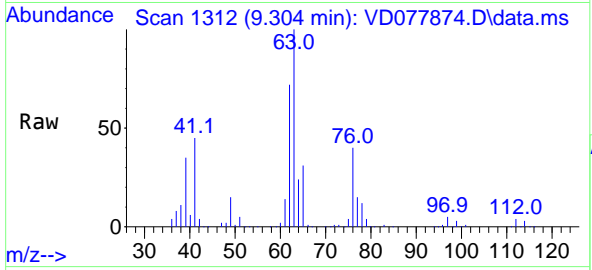
#34
Trichloroethene
Concen: 94.630 ug/L
RT: 9.028 min Scan# 1265
Delta R.T. -0.006 min
Lab File: VD077874.D
Acq: 14 Dec 2023 10:56
Tgt Ion: 95 Resp: 368111
Ion Ratio Lower Upper
95 100
97 64.3 44.2 82.0
132 99.4 67.5 125.3
130 101.0 69.4 129.0



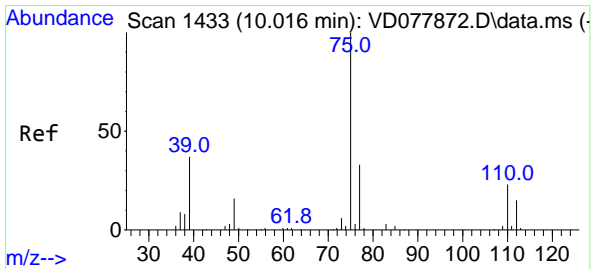
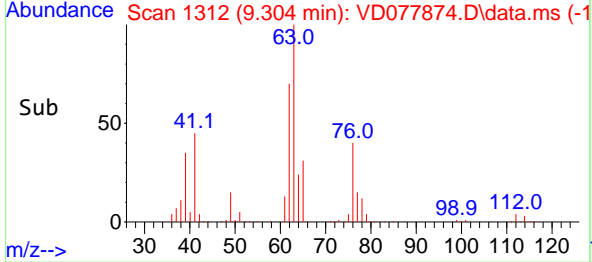
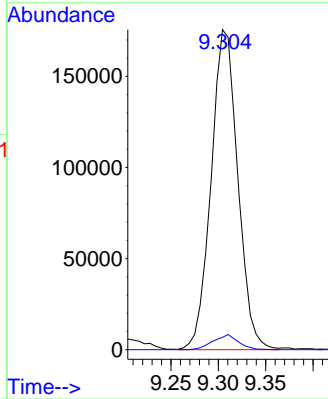


#37
 1,2-Dichloropropane
 Concen: 84.365 ug/L
 RT: 9.304 min Scan# 111
 Delta R.T. -0.000 min
 Lab File: VD077874.D
 Acq: 14 Dec 2023 10:56

Instrument : MSVOA_D
 ClientSampleId :

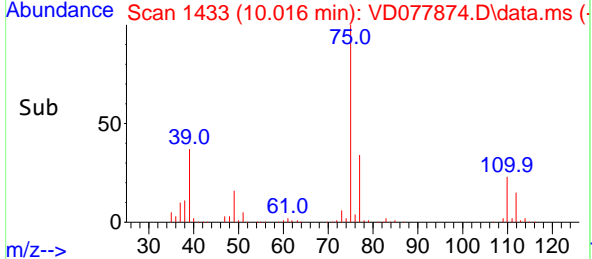
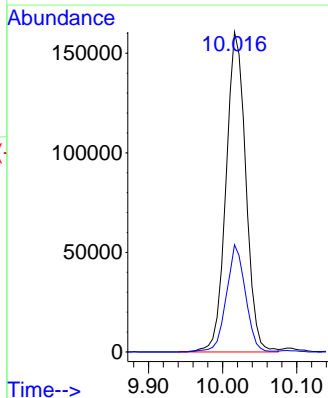
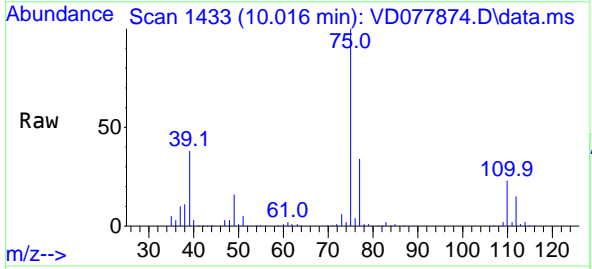


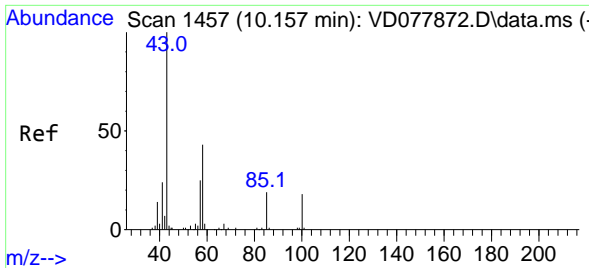
Tgt Ion: 63 Resp: 344700
 Ion Ratio Lower Upper
 63 100
 112 4.4 3.5 5.3



#39
 cis-1,3-Dichloropropene
 Concen: 46.710 ug/L
 RT: 10.016 min Scan# 1433
 Delta R.T. -0.006 min
 Lab File: VD077874.D
 Acq: 14 Dec 2023 10:56

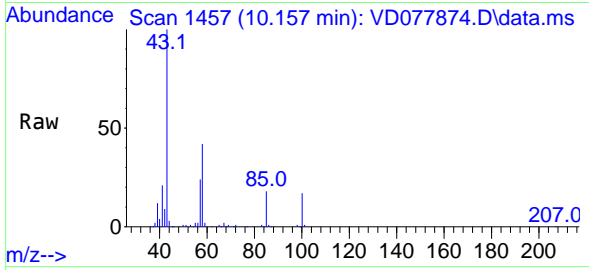
Tgt Ion: 75 Resp: 298035
 Ion Ratio Lower Upper
 75 100
 77 33.5 21.2 39.4





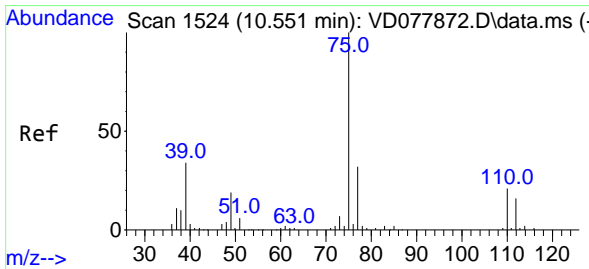
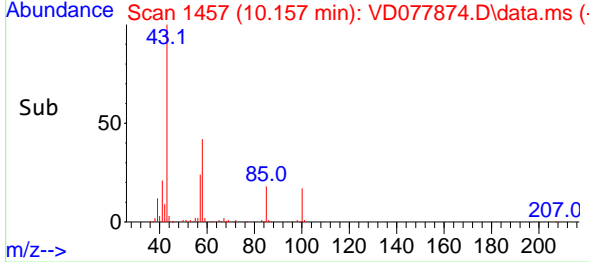
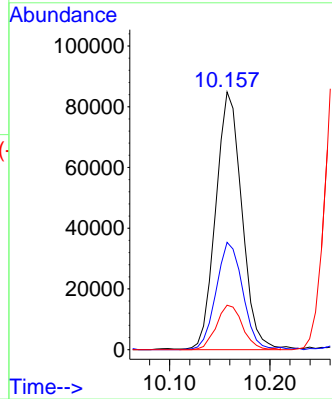
#40
 4-Methyl-2-pentanone
 Concen: 67.953 ug/L
 RT: 10.157 min Scan# 1457
 Delta R.T. -0.006 min
 Lab File: VD077874.D
 Acq: 14 Dec 2023 10:56

Instrument : MSVOA_D
 ClientSampleId :



Tgt Ion: 43 Resp: 153209

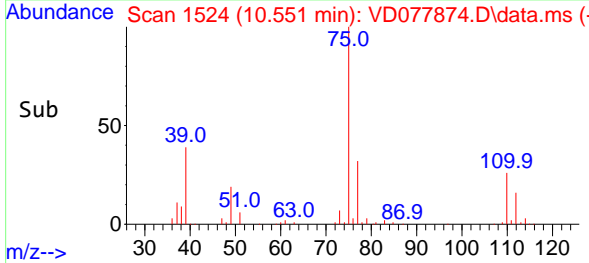
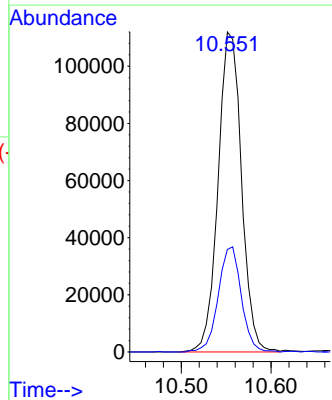
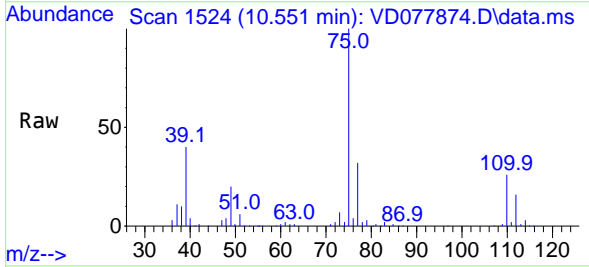
Ion	Ratio	Lower	Upper
43	100		
58	42.4	31.0	46.4
100	17.2	11.9	17.9

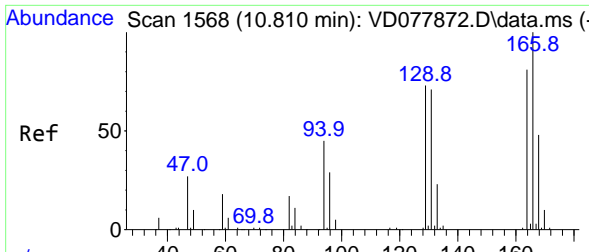


#44
 trans-1,3-Dichloropropene
 Concen: 38.022 ug/L
 RT: 10.551 min Scan# 1524
 Delta R.T. -0.006 min
 Lab File: VD077874.D
 Acq: 14 Dec 2023 10:56

Tgt Ion: 75 Resp: 202632

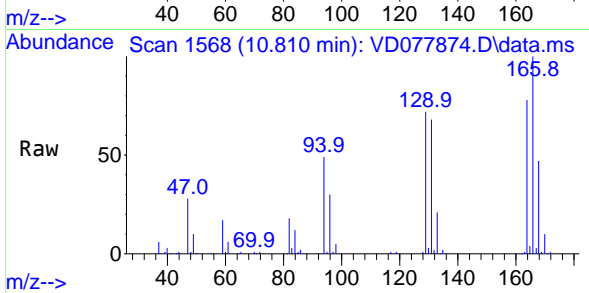
Ion	Ratio	Lower	Upper
75	100		
77	32.1	22.0	40.8



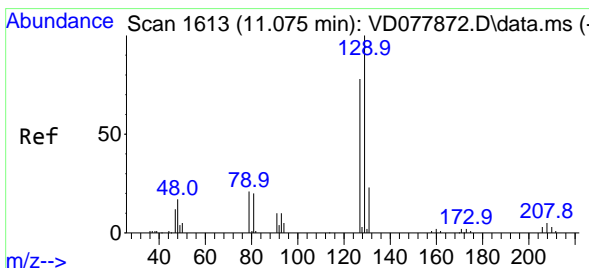
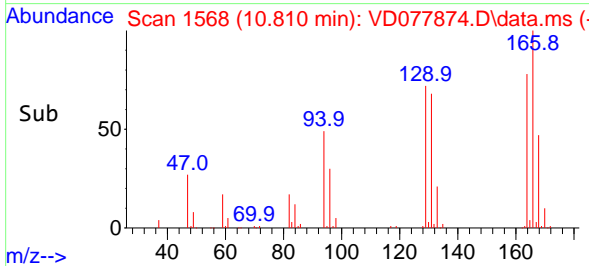
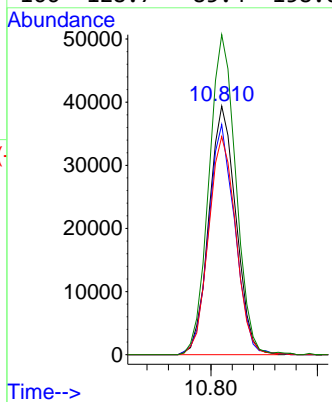


#46
 Tetrachloroethene
 Concen: 22.090 ug/L
 RT: 10.810 min Scan# 11
 Delta R.T. -0.006 min
 Lab File: VD077874.D
 Acq: 14 Dec 2023 10:56

Instrument :
 MSVOA_D
 ClientSampleId :

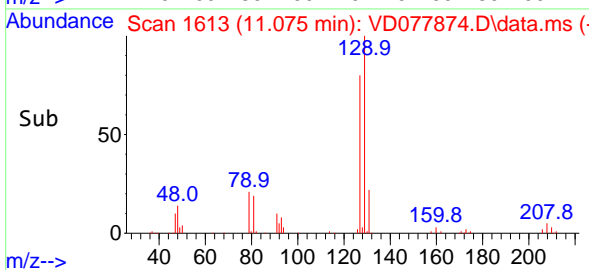
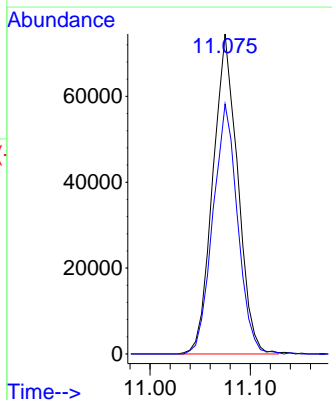
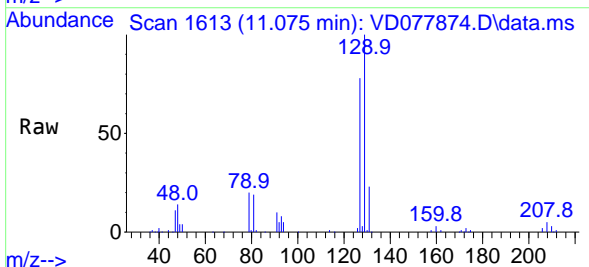


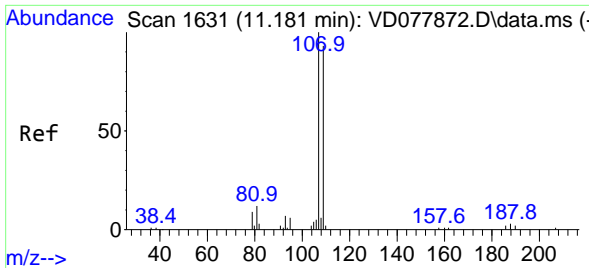
Tgt Ion:164 Resp: 69289
 Ion Ratio Lower Upper
 164 100
 129 92.5 61.5 114.3
 131 87.7 59.1 109.9
 166 128.7 85.4 158.6



#49
 Dibromochloromethane
 Concen: 39.276 ug/L
 RT: 11.075 min Scan# 1613
 Delta R.T. -0.006 min
 Lab File: VD077874.D
 Acq: 14 Dec 2023 10:56

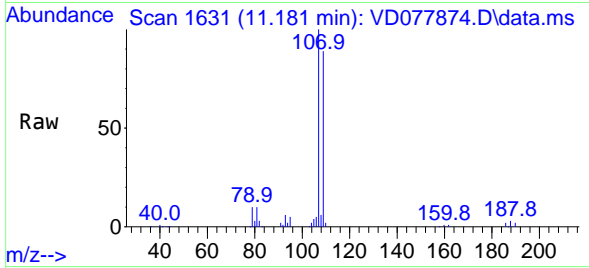
Tgt Ion:129 Resp: 128151
 Ion Ratio Lower Upper
 129 100
 127 78.1 52.8 98.2



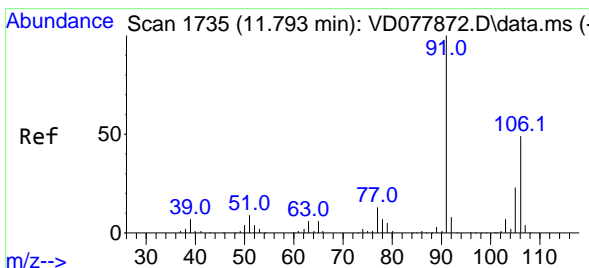
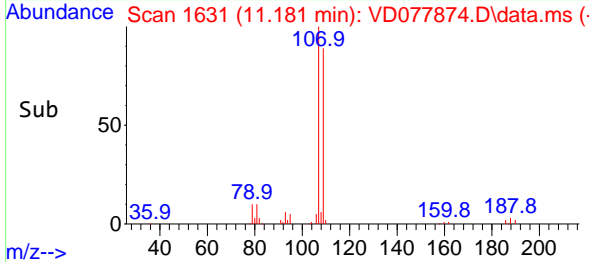
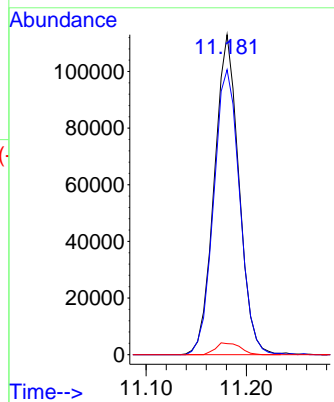


#50
 1,2-Dibromoethane
 Concen: 72.833 ug/L
 RT: 11.181 min Scan# 1
 Delta R.T. -0.000 min
 Lab File: VD077874.D
 Acq: 14 Dec 2023 10:56

Instrument :
 MSVOA_D
 ClientSampleId :

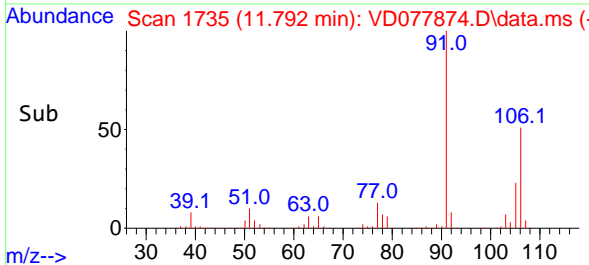
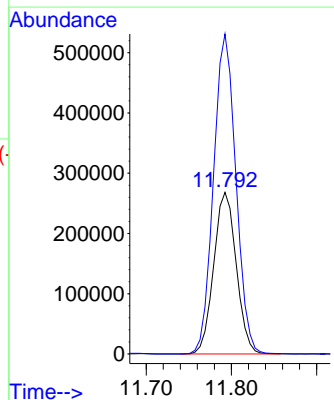
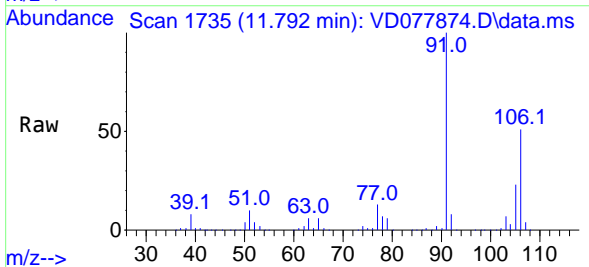


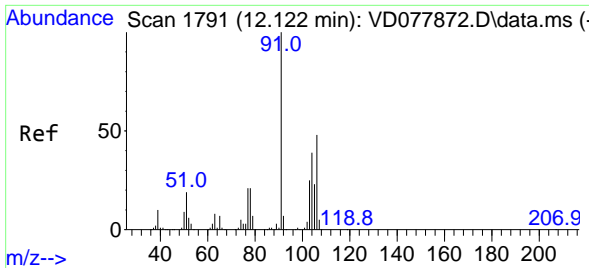
Tgt Ion:107 Resp: 192742
 Ion Ratio Lower Upper
 107 100
 109 89.1 64.2 119.2
 188 3.5 2.3 3.5



#53
 m,p-Xylene
 Concen: 70.753 ug/L
 RT: 11.792 min Scan# 1735
 Delta R.T. -0.000 min
 Lab File: VD077874.D
 Acq: 14 Dec 2023 10:56

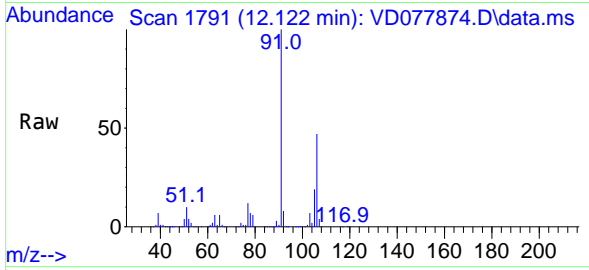
Tgt Ion:106 Resp: 493290
 Ion Ratio Lower Upper
 106 100
 91 197.9 140.8 261.6



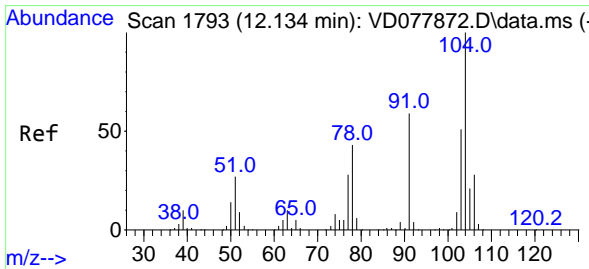
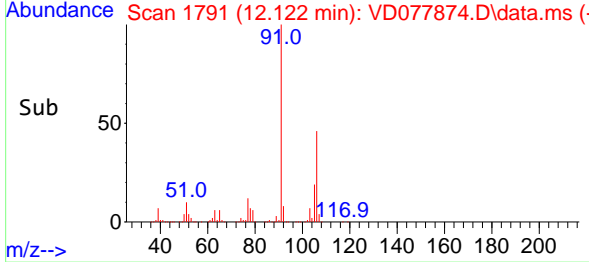
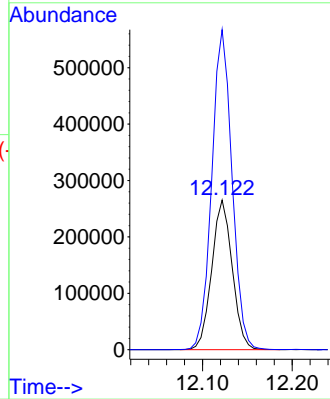


#54
 o-Xylene
 Concen: 63.028 ug/L
 RT: 12.122 min Scan# 1791
 Delta R.T. -0.000 min
 Lab File: VD077874.D
 Acq: 14 Dec 2023 10:56

Instrument : MSVOA_D
 ClientSampleId :

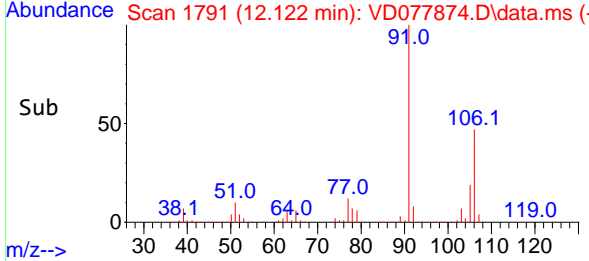
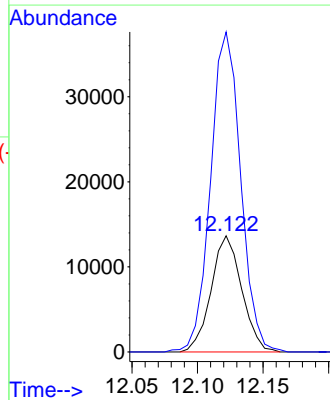
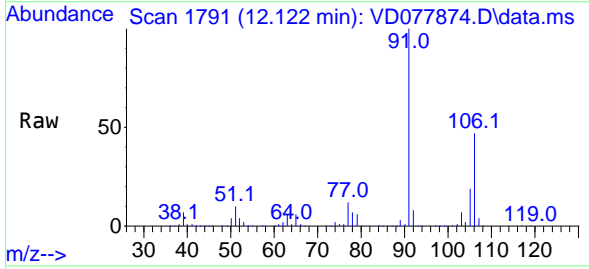


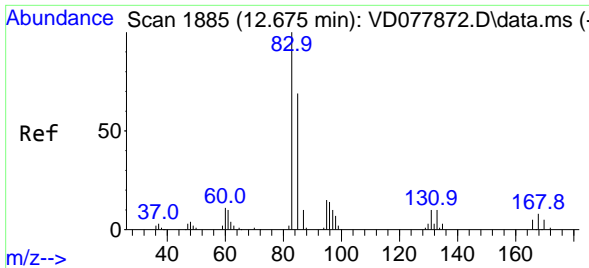
Tgt Ion:106 Resp: 420548
 Ion Ratio Lower Upper
 106 100
 91 213.8 152.2 282.7



#55
 Styrene
 Concen: 1.900 ug/L
 RT: 12.122 min Scan# 1791
 Delta R.T. -0.018 min
 Lab File: VD077874.D
 Acq: 14 Dec 2023 10:56

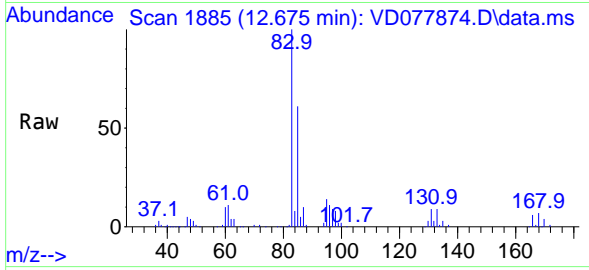
Tgt Ion:104 Resp: 22186
 Ion Ratio Lower Upper
 104 100
 78 275.3 30.9 57.5#



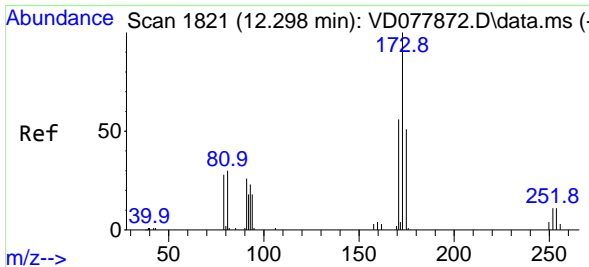
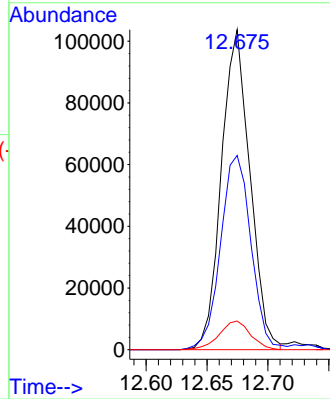
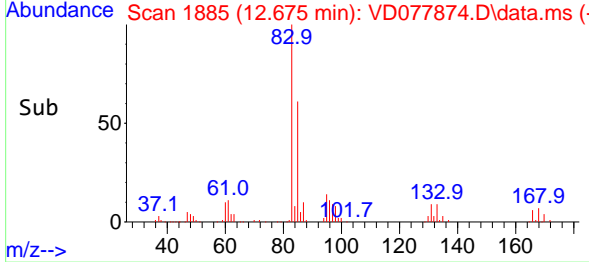


#57
 1,1,2,2-Tetrachloroethane
 Concen: 52.011 ug/L
 RT: 12.675 min Scan# 1885
 Delta R.T. -0.000 min
 Lab File: VD077874.D
 Acq: 14 Dec 2023 10:56

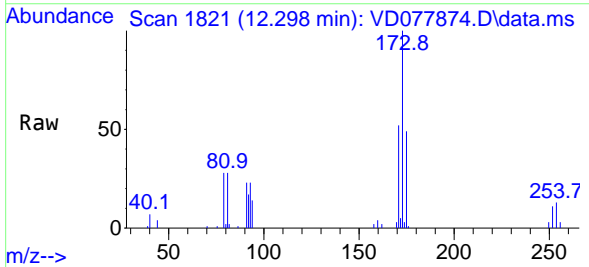
Instrument : MSVOA_D
 ClientSampleId :



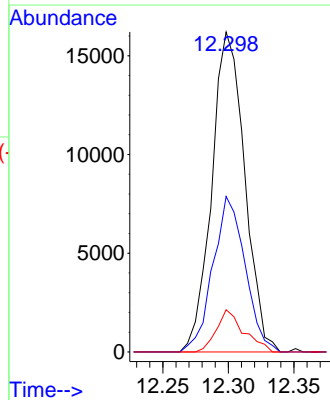
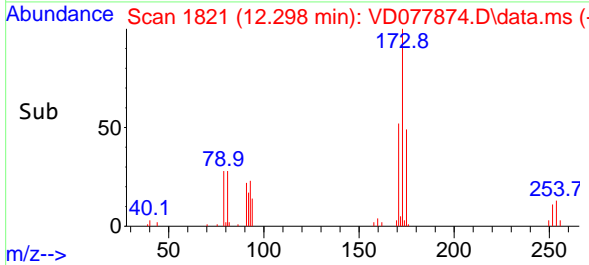
Tgt Ion: 83 Resp: 169111
 Ion Ratio Lower Upper
 83 100
 85 60.7 43.3 80.5
 131 9.0 7.3 10.9

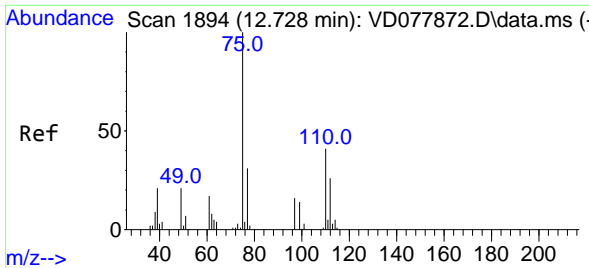


#59
 Bromoform
 Concen: 14.521 ug/L
 RT: 12.298 min Scan# 1821
 Delta R.T. -0.006 min
 Lab File: VD077874.D
 Acq: 14 Dec 2023 10:56



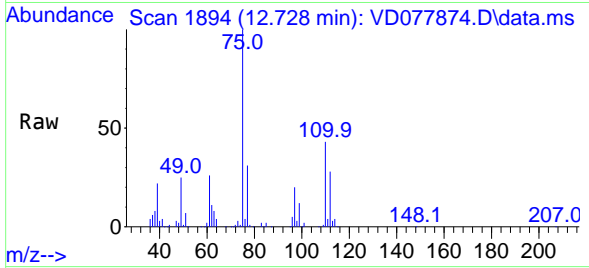
Tgt Ion: 173 Resp: 28317
 Ion Ratio Lower Upper
 173 100
 175 47.5 38.7 58.1
 254 11.0 1.8 2.8#





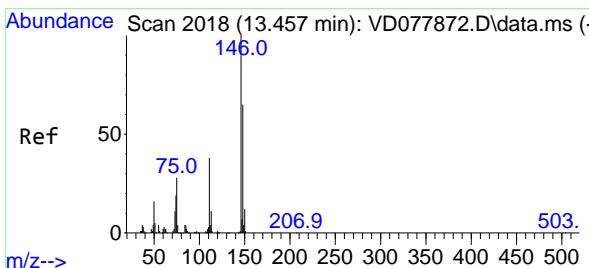
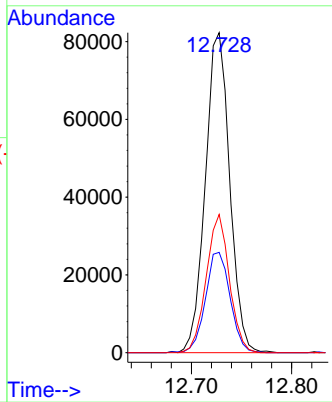
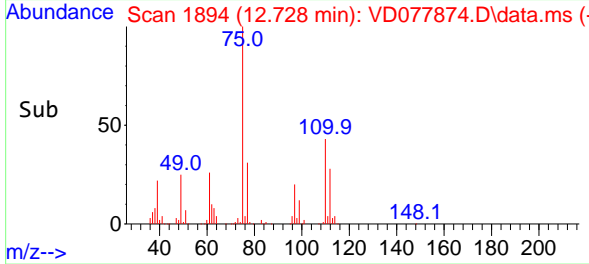
#61
 1,2,3-Trichloropropane
 Concen: 64.149 ug/L
 RT: 12.728 min Scan# 1894
 Delta R.T. -0.000 min
 Lab File: VD077874.D
 Acq: 14 Dec 2023 10:56

Instrument : MSVOA_D
 ClientSampleId :

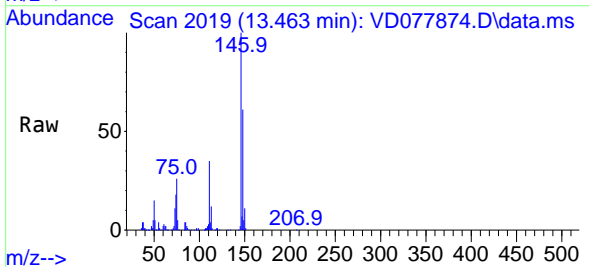


Tgt Ion: 75 Resp: 139072

Ion	Ratio	Lower	Upper
75	100		
77	31.8	26.8	40.2
110	41.0	33.4	50.2

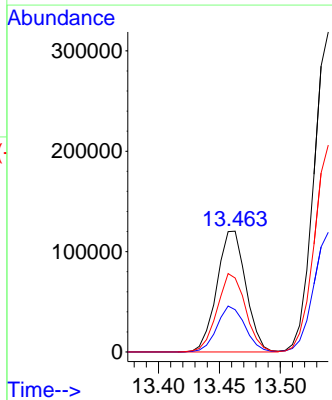
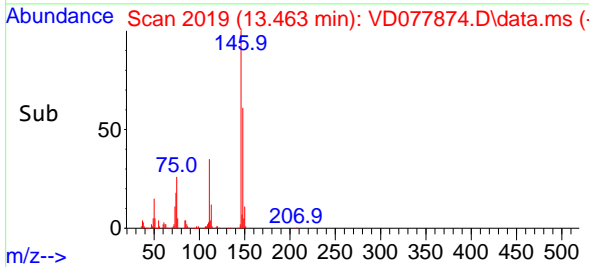


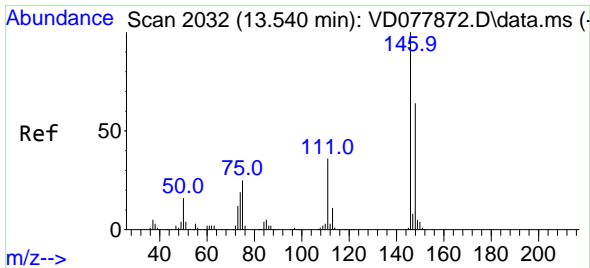
#64
 1,3-Dichlorobenzene
 Concen: 26.248 ug/L
 RT: 13.463 min Scan# 2019
 Delta R.T. -0.000 min
 Lab File: VD077874.D
 Acq: 14 Dec 2023 10:56



Tgt Ion: 146 Resp: 199692

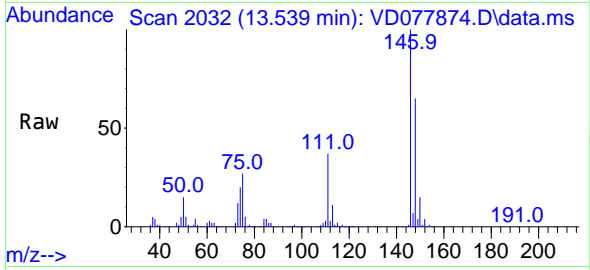
Ion	Ratio	Lower	Upper
146	100		
111	35.0	26.6	49.4
148	61.1	44.0	81.6



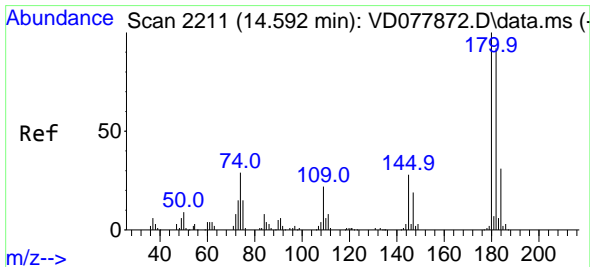
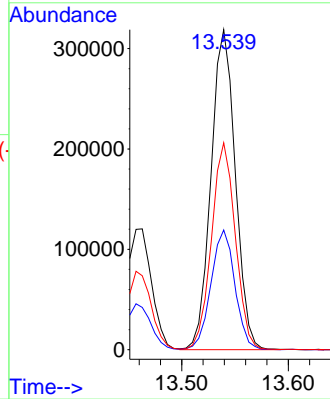
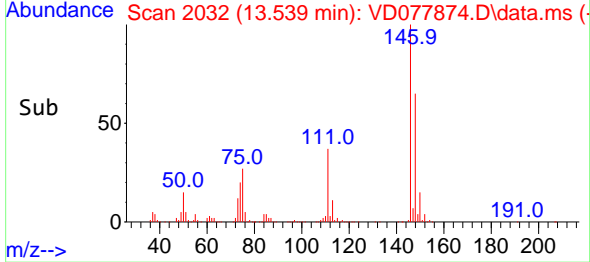


#65
 1,4-Dichlorobenzene
 Concen: 64.009 ug/L
 RT: 13.539 min Scan# 2032
 Delta R.T. -0.000 min
 Lab File: VD077874.D
 Acq: 14 Dec 2023 10:56

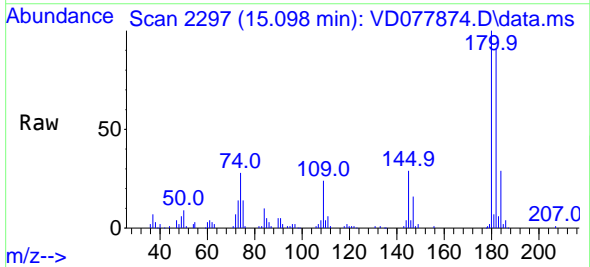
Instrument : MSVOA_D
 ClientSampleId :



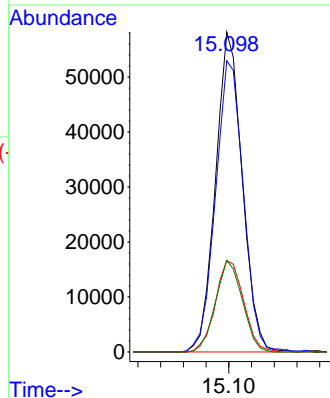
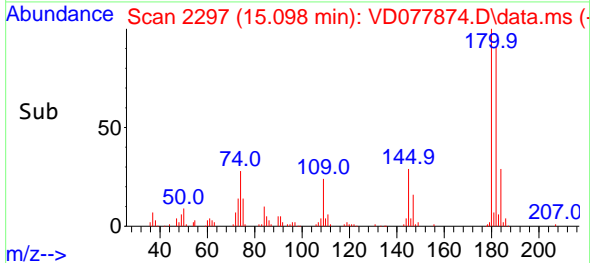
Tgt Ion:146 Resp: 505323
 Ion Ratio Lower Upper
 146 100
 111 37.4 26.4 49.0
 148 64.7 44.0 81.8

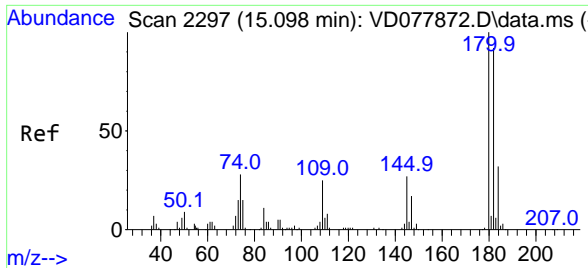


#69
 1,3,5-Trichlorobenzene
 Concen: 18.289 ug/L
 RT: 15.098 min Scan# 2297
 Delta R.T. 0.500 min
 Lab File: VD077874.D
 Acq: 14 Dec 2023 10:56



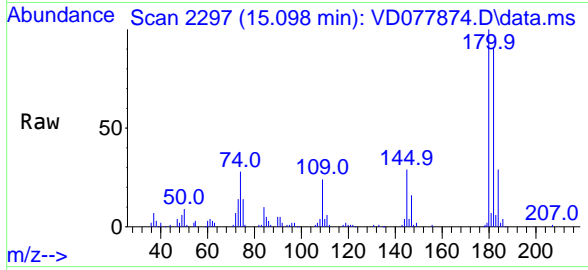
Tgt Ion:180 Resp: 94748
 Ion Ratio Lower Upper
 180 100
 182 95.1 77.0 115.4
 184 30.1 24.3 36.5
 145 28.7 23.4 35.0





#70
 1,2,4-trichlorobenzene
 Concen: 21.544 ug/L
 RT: 15.098 min Scan# 21
 Delta R.T. -0.006 min
 Lab File: VD077874.D
 Acq: 14 Dec 2023 10:56

Instrument : MSVOA_D
 ClientSampleId :



Tgt Ion:180 Resp: 94748

Ion	Ratio	Lower	Upper
180	100		
182	95.1	77.0	115.6
145	28.7	23.9	35.9

