

Data Path : Z:\voasrv\HPCHEM1\MSVOA\_D\Data\VD121423\  
 Data File : VD077887.D  
 Acq On : 14 Dec 2023 16:55  
 Operator : RP/MD  
 Sample : 05788-15  
 Misc : 4.91G/10ml/MSVOA\_D/SOIL  
 ALS Vial : 17 Sample Multiplier: 1

Instrument :  
 MSVOA\_D  
 ClientSampleId :

Quant Time: Dec 15 07:14:09 2023  
 Quant Method : Z:\voasrv\HPCHEM1\MSVOA\_D\Method\SFAMDLM112923SMA.M  
 Quant Title : SFAM01.0  
 QLast Update : Wed Dec 06 00:24:24 2023  
 Response via : Initial Calibration

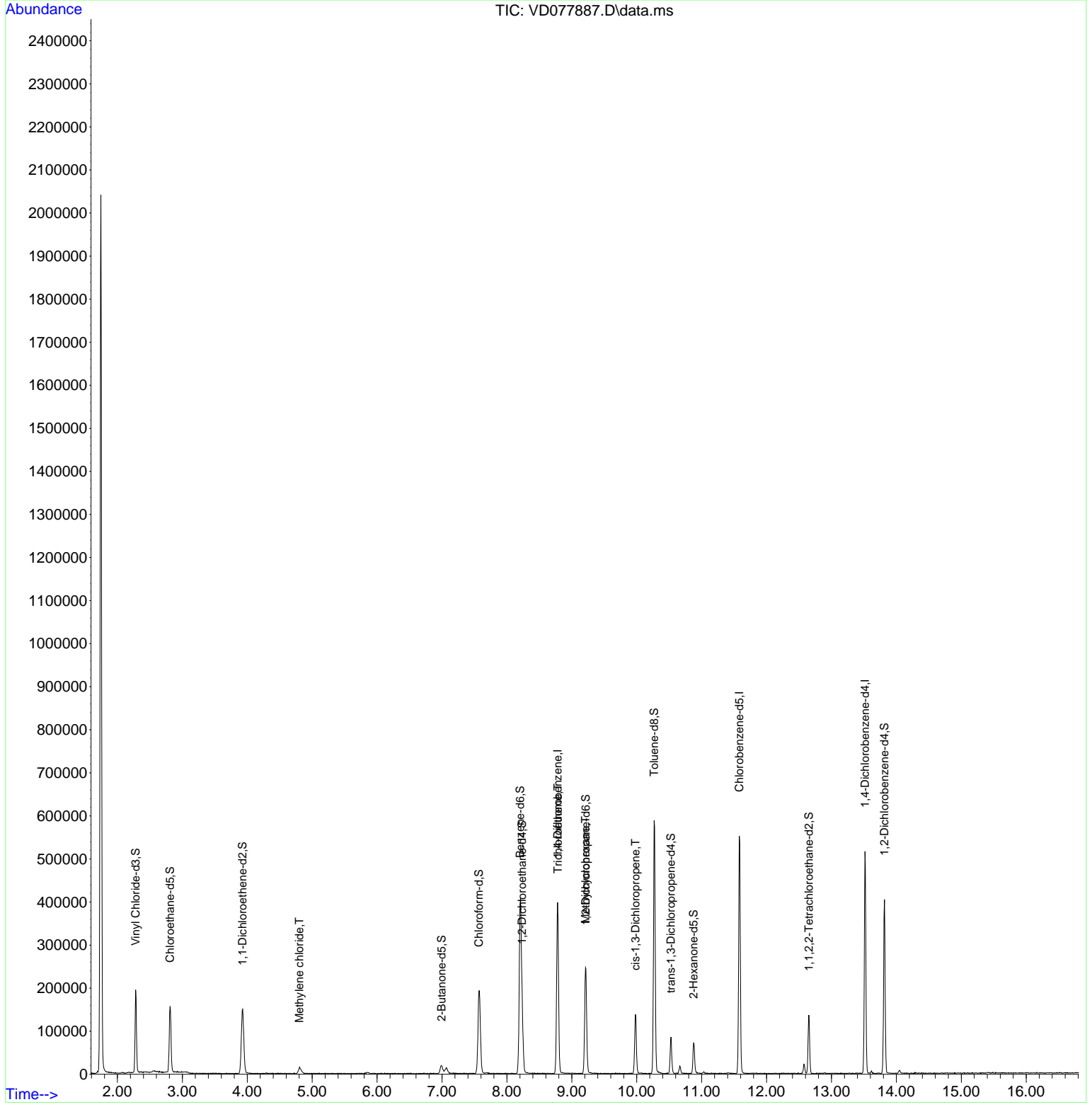
Compound	R.T.	QIon	Response	Conc	Units	Dev(Min)
-----						
Internal Standards						
1) 1,4-Difluorobenzene	8.781	114	356945	25.000	ug/L	0.00
28) Chlorobenzene-d5	11.581	117	325299	25.000	ug/L	0.00
58) 1,4-Dichlorobenzene-d4	13.516	152	134983	25.000	ug/L	0.00
System Monitoring Compounds						
4) Vinyl Chloride-d3	2.281	65	177712	18.257	ug/L	0.00
Spiked Amount	25.000	Range 30 - 150	Recovery =	73.040%		
7) Chloroethane-d5	2.811	69	163625	21.089	ug/L	0.00
Spiked Amount	25.000	Range 30 - 150	Recovery =	84.360%		
11) 1,1-Dichloroethene-d2	3.928	65	43525	17.245	ug/L	0.00
Spiked Amount	25.000	Range 45 - 110	Recovery =	69.000%		
21) 2-Butanone-d5	6.993	46	31687	25.757	ug/L	0.00
Spiked Amount	50.000	Range 20 - 135	Recovery =	51.520%		
24) Chloroform-d	7.569	84	205656	21.377	ug/L	0.00
Spiked Amount	25.000	Range 40 - 150	Recovery =	85.520%		
26) 1,2-Dichloroethane-d4	8.234	65	93381	19.158	ug/L	0.00
Spiked Amount	25.000	Range 70 - 130	Recovery =	76.640%		
32) Benzene-d6	8.204	84	445410	22.735	ug/L	0.00
Spiked Amount	25.000	Range 20 - 135	Recovery =	90.920%		
36) 1,2-Dichloropropane-d6	9.216	67	126992	21.244	ug/L	0.00
Spiked Amount	25.000	Range 70 - 120	Recovery =	84.960%		
41) Toluene-d8	10.269	98	411621	22.826	ug/L	0.00
Spiked Amount	25.000	Range 30 - 130	Recovery =	91.320%		
43) trans-1,3-Dichloroprop...	10.528	79	47822	18.091	ug/L	0.00
Spiked Amount	25.000	Range 30 - 135	Recovery =	72.360%		
47) 2-Hexanone-d5	10.875	63	26431	25.660	ug/L	0.00
Spiked Amount	50.000	Range 20 - 135	Recovery =	51.320%		
56) 1,1,2,2-Tetrachloroeth...	12.651	84	69046	15.984	ug/L	0.00
Spiked Amount	25.000	Range 45 - 120	Recovery =	63.920%		
66) 1,2-Dichlorobenzene-d4	13.816	152	105566	21.861	ug/L	0.00
Spiked Amount	25.000	Range 75 - 120	Recovery =	87.440%		
-----						
Target Compounds						Qvalue
16) Methylene chloride	4.805	84	10361	1.635	ug/L	87
34) Trichloroethene	8.787	95	11078	2.108	ug/L #	5
35) Methylcyclohexane	9.210	83	29039	3.112	ug/L #	20
39) cis-1,3-Dichloropropene	9.981	75	3609	0.419	ug/L #	43
-----						

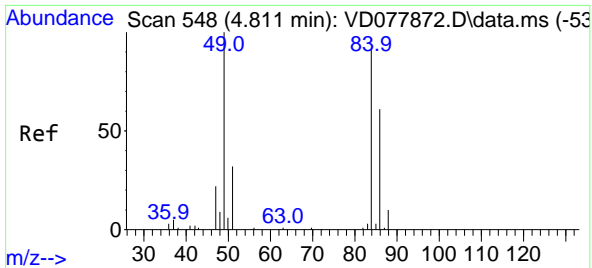
(#) = qualifier out of range (m) = manual integration (+) = signals summed

Data Path : Z:\voasrv\HPCHEM1\MSVOA\_D\Data\VD121423\  
 Data File : VD077887.D  
 Acq On : 14 Dec 2023 16:55  
 Operator : RP/MD  
 Sample : 05788-15  
 Misc : 4.91G/10ml/MSVOA\_D/SOIL  
 ALS Vial : 17 Sample Multiplier: 1

Instrument :  
 MSVOA\_D  
 ClientSampleId :

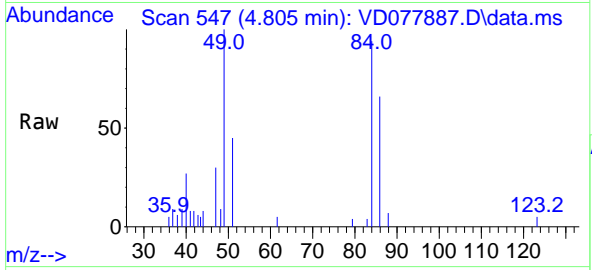
Quant Time: Dec 15 07:14:09 2023  
 Quant Method : Z:\voasrv\HPCHEM1\MSVOA\_D\Method\SFAMDLM112923SMA.M  
 Quant Title : SFAM01.0  
 QLast Update : Wed Dec 06 00:24:24 2023  
 Response via : Initial Calibration





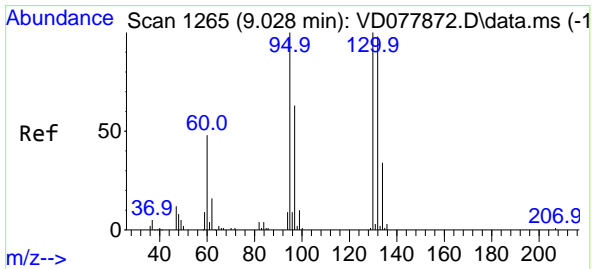
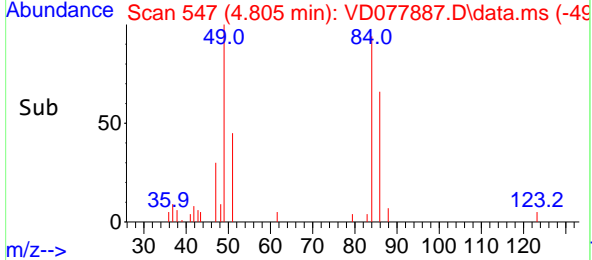
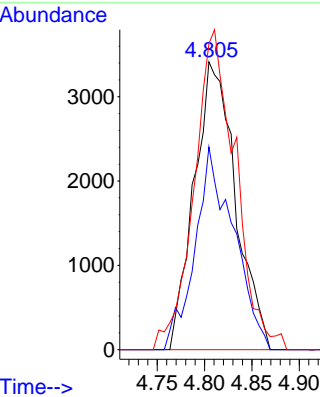
#16  
 Methylene chloride  
 Concen: 1.635 ug/L  
 RT: 4.805 min Scan# 547  
 Delta R.T. -0.006 min  
 Lab File: VD077887.D  
 Acq: 14 Dec 2023 16:55

Instrument : MSVOA\_D  
 ClientSampleId :



Tgt Ion: 84 Resp: 10361

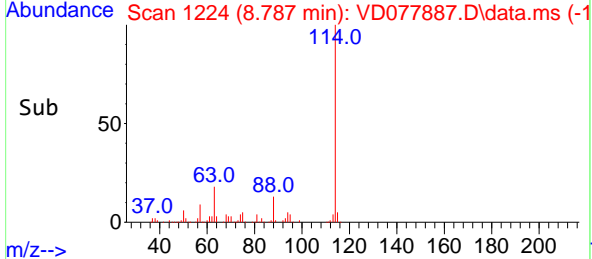
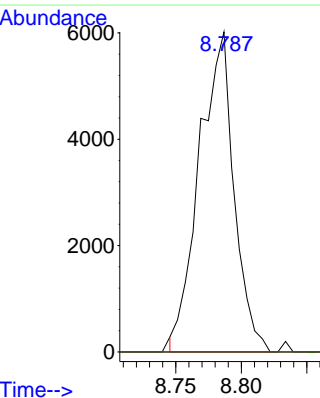
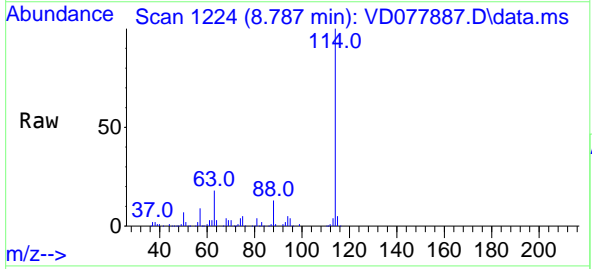
Ion	Ratio	Lower	Upper
84	100		
86	70.4	40.1	74.5
49	106.3	83.2	154.6

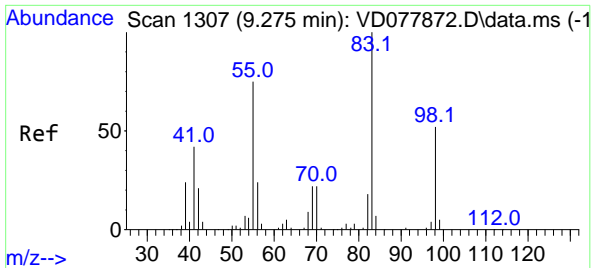


#34  
 Trichloroethene  
 Concen: 2.108 ug/L  
 RT: 8.787 min Scan# 1224  
 Delta R.T. -0.247 min  
 Lab File: VD077887.D  
 Acq: 14 Dec 2023 16:55

Tgt Ion: 95 Resp: 11078

Ion	Ratio	Lower	Upper
95	100		
97	0.0	44.2	82.0#
132	0.0	67.5	125.3#
130	0.0	69.4	129.0#

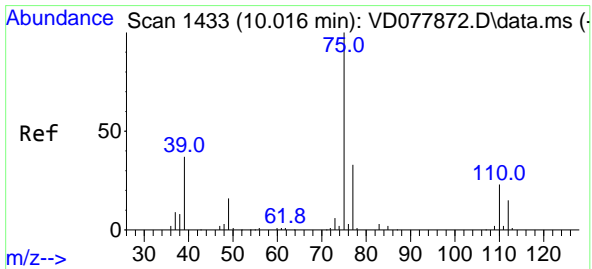
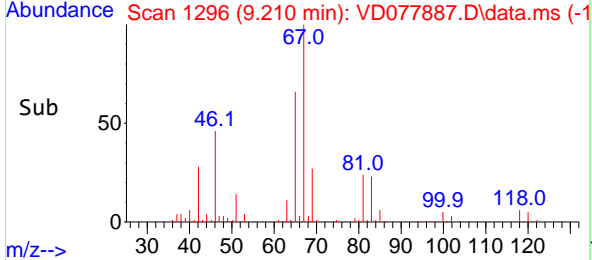
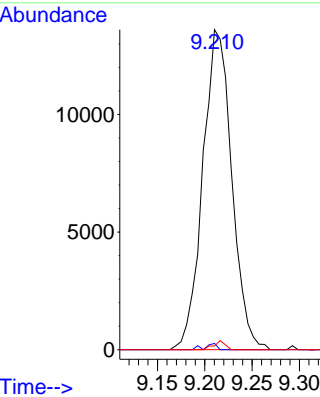
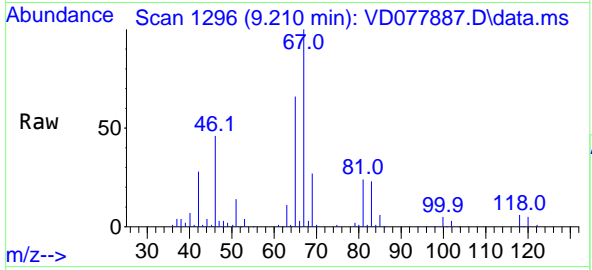




#35  
 Methylcyclohexane  
 Concen: 3.112 ug/L  
 RT: 9.210 min Scan# 11  
 Delta R.T. -0.065 min  
 Lab File: VD077887.D  
 Acq: 14 Dec 2023 16:55

Instrument : MSVOA\_D  
 ClientSampleId :

Tgt Ion	Resp	Lower	Upper
83	29039		
55	0.6	59.8	89.6#
98	1.1	38.5	57.7#



#39  
 cis-1,3-Dichloropropene  
 Concen: 0.419 ug/L  
 RT: 9.981 min Scan# 1427  
 Delta R.T. -0.041 min  
 Lab File: VD077887.D  
 Acq: 14 Dec 2023 16:55

Tgt Ion	Resp	Lower	Upper
75	3609		
77	61.4	21.2	39.4#

