

Data Path : Z:\voasrv\HPCHEM1\MSVOA_D\Data\VD121423\
 Data File : VD077879.D
 Acq On : 14 Dec 2023 13:24
 Operator : RP/MD
 Sample : 05788-05
 Misc : 5.39G/10ml/MSVOA_D/SOIL
 ALS Vial : 9 Sample Multiplier: 1

Instrument :
 MSVOA_D
 ClientSampleId :
 DCLQ3

Integration Parameters: LSCINT.P

Integrator: RTE
 Smoothing : OFF Filtering: 5
 Sampling : 1 Min Area: 0 % of largest Peak
 Start Thrs: 0.2 Max Peaks: 100
 Stop Thrs : 0 Peak Location: TOP

If leading or trailing edge < 100 prefer < Baseline drop else tangent >
 Peak separation: 5

Method : Z:\voasrv\HPCHEM1\MSVOA_D\Method\SFAMDLM112923SMA.M
 Title : SFAM01.0

Signal : TIC: VD077879.D\data.ms

peak #	R.T. min	first scan	max scan	last scan	PK TY	peak height	corr. area	corr. % max.	% of total
1	1.699	15	19	20	rBV	3909	5146	0.31%	0.048%
2	1.746	20	27	37	rVV	1015550	1664269	100.00%	15.543%
3	2.081	79	84	88	rBV3	2591	4678	0.28%	0.044%
4	2.111	88	89	92	rVB2	1201	994	0.06%	0.009%
5	2.281	112	118	126	rVB	187586	277959	16.70%	2.596%
6	2.811	202	208	219	rVB	146147	279724	16.81%	2.612%
7	3.169	267	269	272	rVB3	1607	1319	0.08%	0.012%
8	3.193	272	273	275	rBV	1475	1052	0.06%	0.010%
9	3.481	320	322	324	rBV2	1365	1200	0.07%	0.011%
10	3.569	334	337	341	rVB2	1627	2241	0.13%	0.021%
11	3.611	341	344	347	rVB3	1381	1737	0.10%	0.016%
12	3.928	385	398	410	rVV	151867	404081	24.28%	3.774%
13	4.211	443	446	449	rBV2	892	1268	0.08%	0.012%
14	4.234	449	450	453	rBV	1298	1407	0.08%	0.013%
15	4.399	475	478	480	rBV2	1000	1359	0.08%	0.013%
16	4.669	522	524	526	rBV2	818	946	0.06%	0.009%
17	4.805	539	547	548	rBV5	6925	11694	0.70%	0.109%
18	4.899	561	563	566	rBV2	967	986	0.06%	0.009%
19	5.028	583	585	588	rBV	930	1057	0.06%	0.010%
20	5.099	596	597	599	rBV	1553	1173	0.07%	0.011%
21	5.205	613	615	616	rBV	952	810	0.05%	0.008%
22	5.258	622	624	626	rVB2	1096	765	0.05%	0.007%
23	5.281	626	628	631	rBV2	1026	873	0.05%	0.008%
24	5.375	641	644	647	rBV2	819	1177	0.07%	0.011%
25	5.775	710	712	715	rVB2	792	818	0.05%	0.008%
26	6.034	753	756	757	rBV	1132	1019	0.06%	0.010%
27	6.099	766	767	770	rVB2	1089	803	0.05%	0.007%
28	6.122	770	771	774	rBV2	1061	1015	0.06%	0.009%
29	6.240	790	791	794	rBV2	871	797	0.05%	0.007%
30	6.293	798	800	802	rBV	1462	1073	0.06%	0.010%
31	6.316	802	804	806	rVB2	1455	889	0.05%	0.008%
32	6.410	818	820	823	rBV2	604	780	0.05%	0.007%
33	6.557	842	845	847	rBV	940	1334	0.08%	0.012%
34	6.581	847	849	852	rVB	1312	1155	0.07%	0.011%
35	6.622	852	856	857	rBV2	1001	1132	0.07%	0.011%
36	6.775	878	882	884	rVB	1163	1293	0.08%	0.012%

Data Path : Z:\voasrv\HPCHEM1\MSVOA_D\Data\VD121423\
 Data File : VD077879.D
 Acq On : 14 Dec 2023 13:24
 Operator : RP/MD
 Sample : 05788-05
 Misc : 5.39G/10ml/MSVOA_D/SOIL
 ALS Vial : 9 Sample Multiplier: 1

Instrument :
 MSVOA_D
 ClientSampleId :
 DCLQ3

Integration Parameters: LSCINT.P

Integrator: RTE
 Smoothing : OFF
 Sampling : 1
 Start Thrs : 0.2
 Stop Thrs : 0

Filtering: 5
 Min Area: 0 % of largest Peak
 Max Peaks: 100
 Peak Location: TOP

If leading or trailing edge < 100 prefer < Baseline drop else tangent >
 Peak separation: 5

Method : Z:\voasrv\HPCHEM1\MSVOA_D\Method\SFAMDLM112923SMA.M
 Title : SFAM01.0

37	6.816	888	889	892	rBV	1688	1311	0.08%	0.012%
38	6.887	899	901	904	rVB	1672	1242	0.07%	0.012%
39	6.922	904	907	908	rBV	1420	1333	0.08%	0.012%
40	6.993	911	919	925	rBV2	22109	59927	3.60%	0.560%
41	7.128	940	942	945	rVB2	1392	1037	0.06%	0.010%
42	7.299	969	971	974	rVV3	1049	866	0.05%	0.008%
43	7.569	1006	1017	1030	rBV	191243	491871	29.55%	4.594%
44	7.693	1036	1038	1040	rBV	1414	937	0.06%	0.009%
45	7.893	1070	1072	1076	rVB2	2045	1540	0.09%	0.014%
46	7.928	1076	1078	1081	rBV2	1031	930	0.06%	0.009%
47	7.951	1081	1082	1087	rVV2	1153	1216	0.07%	0.011%
48	8.051	1097	1099	1102	rBV	952	831	0.05%	0.008%
49	8.093	1105	1106	1109	rVB2	1057	926	0.06%	0.009%
50	8.134	1112	1113	1116	rBV2	1363	1334	0.08%	0.012%
51	8.204	1116	1125	1144	rBV2	400985	1156794	69.51%	10.803%
52	8.422	1159	1162	1163	rBV2	962	774	0.05%	0.007%
53	8.493	1172	1174	1175	rBV2	1021	851	0.05%	0.008%
54	8.781	1214	1223	1233	rVV	460314	939391	56.44%	8.773%
55	9.210	1288	1296	1306	rBV	251293	524484	31.51%	4.898%
56	9.587	1358	1360	1361	rBV2	956	862	0.05%	0.008%
57	9.722	1381	1383	1387	rBV	1271	1735	0.10%	0.016%
58	9.898	1410	1413	1415	rBV	1311	1754	0.11%	0.016%
59	9.981	1419	1427	1437	rVV	142621	268074	16.11%	2.504%
60	10.269	1468	1476	1488	rBV	562755	1022261	61.42%	9.547%
61	10.528	1512	1520	1530	rBV	87034	157788	9.48%	1.474%
62	10.669	1537	1544	1548	rBV3	7350	13568	0.82%	0.127%
63	10.751	1554	1558	1561	rBV2	928	1337	0.08%	0.012%
64	10.816	1567	1569	1573	rBV	1066	1178	0.07%	0.011%
65	10.875	1573	1579	1590	rVV	84481	157734	9.48%	1.473%
66	11.110	1617	1619	1624	rBV3	1896	2501	0.15%	0.023%
67	11.292	1647	1650	1652	rVB	1109	1051	0.06%	0.010%
68	11.504	1684	1686	1687	rBV	880	831	0.05%	0.008%
69	11.581	1692	1699	1712	rVV	664423	1145819	68.85%	10.701%
70	11.863	1745	1747	1751	rBV2	975	923	0.06%	0.009%
71	12.040	1773	1777	1778	rBV2	1174	1275	0.08%	0.012%
72	12.181	1799	1801	1802	rBV2	1059	769	0.05%	0.007%
73	12.416	1837	1841	1842	rBV2	1144	1138	0.07%	0.011%
74	12.498	1854	1855	1858	rVB3	1178	825	0.05%	0.008%
75	12.581	1864	1869	1874	rVV3	12517	20443	1.23%	0.191%
76	12.651	1874	1881	1889	rVV	151194	254683	15.30%	2.378%

Data Path : Z:\voasrv\HPCHEM1\MSVOA_D\Data\VD121423\
 Data File : VD077879.D
 Acq On : 14 Dec 2023 13:24
 Operator : RP/MD
 Sample : 05788-05
 Misc : 5.39G/10ml/MSVOA_D/SOIL
 ALS Vial : 9 Sample Multiplier: 1

Instrument :
 MSVOA_D
 ClientSampleId :
 DCLQ3

Integration Parameters: LSCINT.P

Integrator: RTE
 Smoothing : OFF Filtering: 5
 Sampling : 1 Min Area: 0 % of largest Peak
 Start Thrs: 0.2 Max Peaks: 100
 Stop Thrs : 0 Peak Location: TOP

If leading or trailing edge < 100 prefer < Baseline drop else tangent >
 Peak separation: 5

Method : Z:\voasrv\HPCHEM1\MSVOA_D\Method\SFAMDLM112923SMA.M
 Title : SFAM01.0

77	12.839	1912	1913	1915	rBV	1929	1239	0.07%	0.012%
78	13.069	1950	1952	1954	rVB	1390	881	0.05%	0.008%
79	13.116	1958	1960	1962	rVB	1460	1074	0.06%	0.010%
80	13.134	1962	1963	1964	rBV	1508	879	0.05%	0.008%
81	13.257	1982	1984	1985	rBV	1549	1202	0.07%	0.011%
82	13.339	1996	1998	2001	rBV	963	1070	0.06%	0.010%
83	13.516	2021	2028	2037	rBV	621685	1025885	61.64%	9.581%
84	13.622	2042	2046	2050	rVB5	4277	4869	0.29%	0.045%
85	13.710	2060	2061	2063	rBV2	1229	919	0.06%	0.009%
86	13.816	2072	2079	2089	rBV	425705	713491	42.87%	6.663%
87	14.051	2115	2119	2127	rVB4	6982	12386	0.74%	0.116%
88	14.269	2154	2156	2158	rBV2	1191	973	0.06%	0.009%
89	14.381	2173	2175	2179	rBV2	1351	1455	0.09%	0.014%
90	14.675	2223	2225	2227	rBV2	1437	1160	0.07%	0.011%
91	14.716	2230	2232	2233	rBV	1758	974	0.06%	0.009%
92	15.151	2304	2306	2308	rBV2	1970	1552	0.09%	0.014%
93	15.275	2325	2327	2329	rBV3	1201	1005	0.06%	0.009%
94	15.322	2333	2335	2339	rBV2	1596	2254	0.14%	0.021%
95	15.469	2357	2360	2361	rBV2	3157	2811	0.17%	0.026%
96	16.033	2454	2456	2459	rBV3	1749	1247	0.07%	0.012%
97	16.351	2507	2510	2511	rBV2	1785	1572	0.09%	0.015%
98	16.492	2532	2534	2535	rBV	1878	1007	0.06%	0.009%
99	16.539	2541	2542	2544	rBV2	1772	1078	0.06%	0.010%
100	16.639	2554	2559	2560	rBV3	1772	2706	0.16%	0.025%

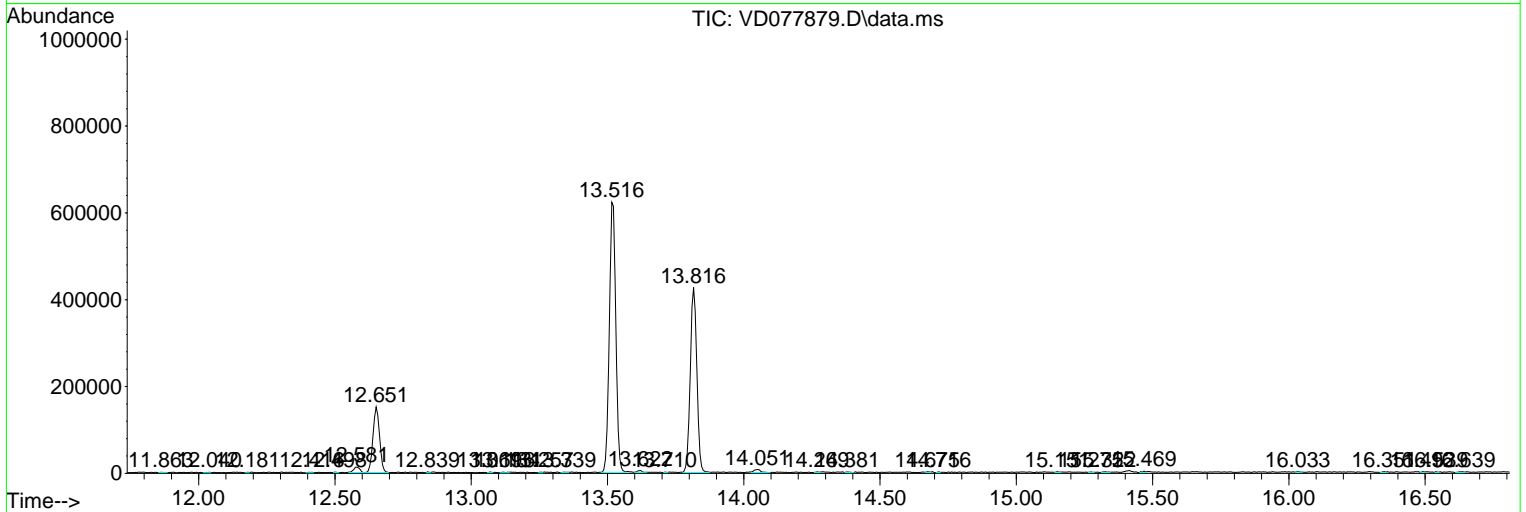
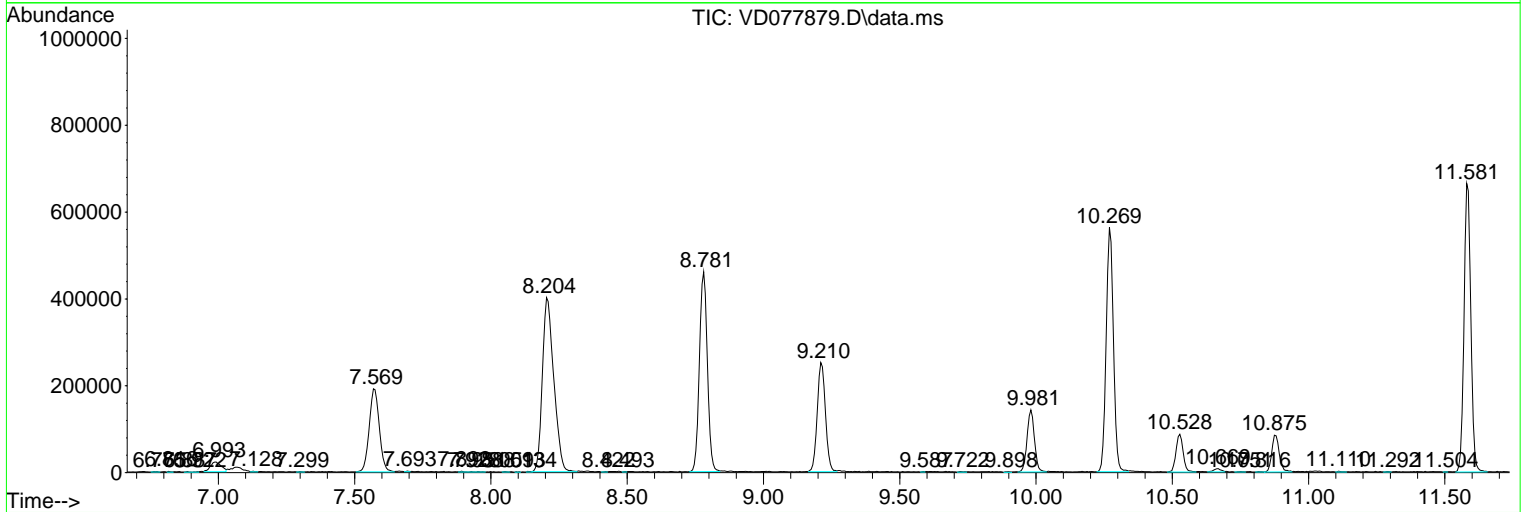
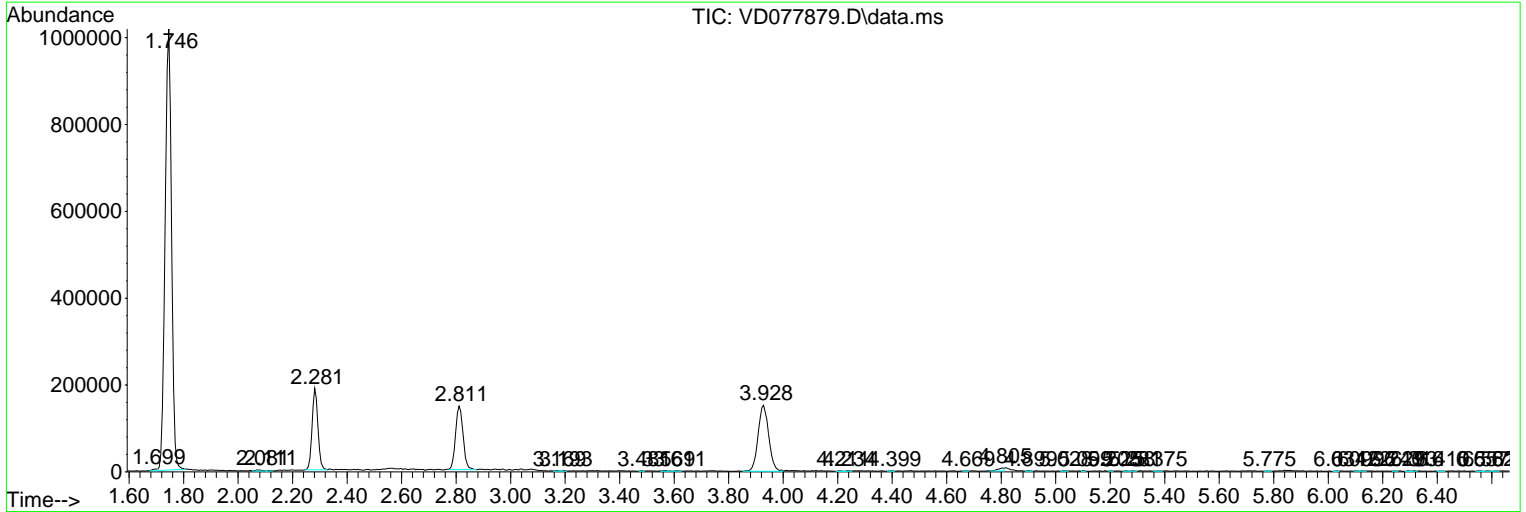
Sum of corrected areas: 10707856

Data Path : Z:\voasrv\HPCHEM1\MSVOA_D\Data\VD121423\
 Data File : VD077879.D
 Acq On : 14 Dec 2023 13:24
 Operator : RP/MD
 Sample : 05788-05
 Misc : 5.39G/10ml/MSVOA_D/SOIL
 ALS Vial : 9 Sample Multiplier: 1

Instrument :
 MSVOA_D
 ClientSampleId :
 DCLQ3

Quant Method : Z:\voasrv\HPCHEM1\MSVOA_D\Method\SFAMDLM112923SMA.M
 Quant Title : SFAM01.0

TIC Library : C:\Database\NIST20.L
 TIC Integration Parameters: LSCINT.P



Library Search Compound Report

Data Path : Z:\voasrv\HPCHEM1\MSVOA_D\Data\VD121423\
Data File : VD077879.D
Acq On : 14 Dec 2023 13:24
Operator : RP/MD
Sample : 05788-05
Misc : 5.39G/10ml/MSVOA_D/SOIL
ALS Vial : 9 Sample Multiplier: 1

Instrument :
MSVOA_D
ClientSampleId :
DCLQ3

Quant Method : Z:\voasrv\HPCHEM1\MSVOA_D\Method\SFAMDLM112923SMA.M
Quant Title : SFAM01.0

TIC Library : C:\Database\NIST20.L
TIC Integration Parameters: LSCINT.P

No Library Search Compounds Detected

Data Path : Z:\voasrv\HPCHEM1\MSVOA_D\Data\VD121423\
Data File : VD077879.D
Acq On : 14 Dec 2023 13:24
Operator : RP/MD
Sample : 05788-05
Misc : 5.39G/10ml/MSVOA_D/SOIL
ALS Vial : 9 Sample Multiplier: 1

Instrument :
MSVOA_D
ClientSampleId :
DCLQ3

Quant Method : Z:\voasrv\HPCHEM1\MSVOA_D\Method\SFAMDLM112923SMA.M
Quant Title : SFAM01.0

TIC Library : C:\Database\NIST0.L
TIC Integration Parameters: LSCINT.P

TIC Top Hit name	RT	EstConc	Units	Response	--Internal Standard--			
					#	RT	Resp	Conc
