

Data Path : Z:\voasrv\HPCHEM1\MSVOA_D\Data\VD121523\
 Data File : VD077899.D
 Acq On : 15 Dec 2023 13:14
 Operator : RP/MD
 Sample : 05611-08
 Misc : 5.09G/5.0ml/MSVOA_D/SOIL
 ALS Vial : 10 Sample Multiplier: 1

Instrument :
 MSVOA_D
 ClientSampleId :

Quant Time: Dec 16 04:00:24 2023
 Quant Method : Z:\voasrv\HPCHEM1\MSVOA_D\Method\82D120823S.M
 Quant Title : SW846 8260
 QLast Update : Thu Dec 14 14:48:10 2023
 Response via : Initial Calibration

Compound	R.T.	QIon	Response	Conc	Units	Dev(Min)

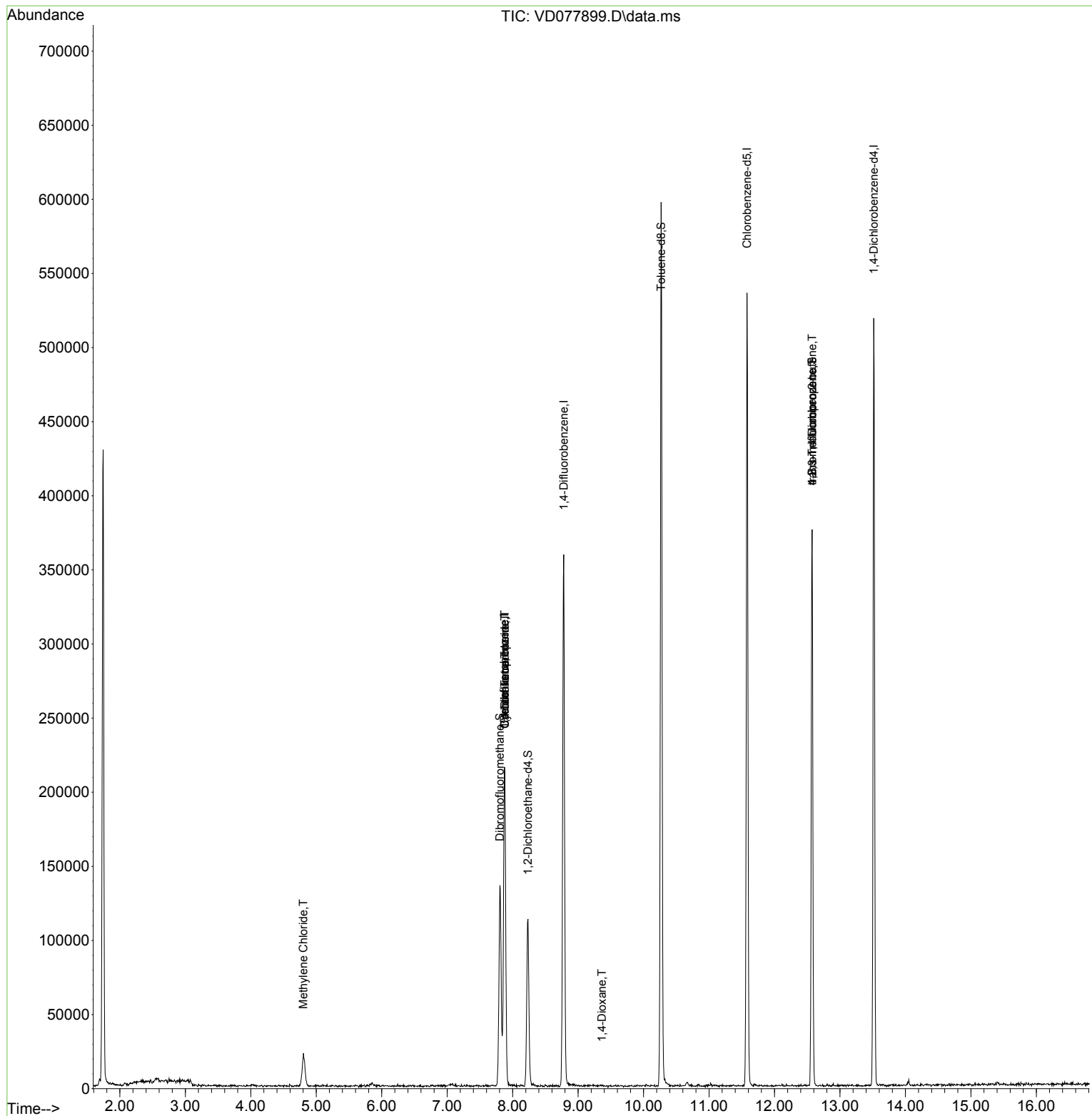
Internal Standards						
1) Pentafluorobenzene	7.875	168	168188	50.000	ug/l	# 0.00
34) 1,4-Difluorobenzene	8.781	114	313173	50.000	ug/l	0.00
63) Chlorobenzene-d5	11.581	117	304400	50.000	ug/l	0.00
72) 1,4-Dichlorobenzene-d4	13.516	152	137265	50.000	ug/l	0.00
System Monitoring Compounds						
33) 1,2-Dichloroethane-d4	8.234	65	88315	44.562	ug/l	0.00
Spiked Amount	50.000	Range	50 - 163	Recovery	=	89.120%
35) Dibromofluoromethane	7.804	113	96179	43.844	ug/l	0.00
Spiked Amount	50.000	Range	54 - 147	Recovery	=	87.680%
50) Toluene-d8	10.269	98	401718	45.723	ug/l	0.00
Spiked Amount	50.000	Range	58 - 134	Recovery	=	91.440%
62) 4-Bromofluorobenzene	12.575	95	115789	44.080	ug/l	0.00
Spiked Amount	50.000	Range	30 - 143	Recovery	=	88.160%
Target Compounds						
						Qvalue
11) Tert butyl alcohol	4.787	59	59	Below Cal	#	1
16) Acetone	4.034	43	1222	Below Cal		98
20) Methylene Chloride	4.805	84	16164	2.262	ug/l #	87
25) 2-Butanone	7.081	43	243	Below Cal	#	37
31) Cyclohexane	7.881	56	3825	1.085	ug/l #	23
36) 1,1-Dichloropropene	7.881	75	14128	4.026	ug/l #	48
38) Carbon Tetrachloride	7.881	117	16640	4.757	ug/l #	14
49) 1,4-Dioxane	9.363	88	54	4.245	ug/l #	1
65) Chlorobenzene	11.598	112	199	Below Cal	#	1
76) 1,2,3-Trichloropropane	12.575	75	61913	51.934	ug/l #	100
81) trans-1,4-Dichloro-2-b...	12.575	75	61913	105.221	ug/l #	17
88) 1,4-Dichlorobenzene	13.534	146	645	Below Cal	#	1
92) 1,2-Dibromo-3-Chloropr...	14.492	75	60	Below Cal	#	1

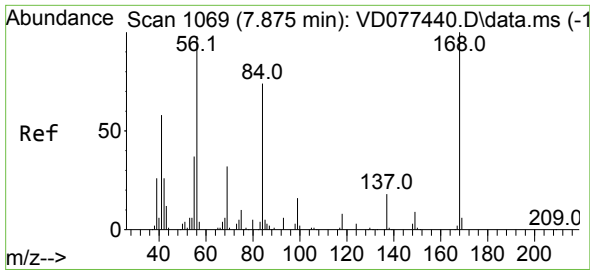
(#) = qualifier out of range (m) = manual integration (+) = signals summed

Data Path : Z:\voasrv\HPCHEM1\MSVOA_D\Data\VD121523\
 Data File : VD077899.D
 Acq On : 15 Dec 2023 13:14
 Operator : RP/MD
 Sample : 05611-08
 Misc : 5.09G/5.0ml/MSVOA_D/SOIL
 ALS Vial : 10 Sample Multiplier: 1

Instrument :
 MSVOA_D
 ClientSampleId :

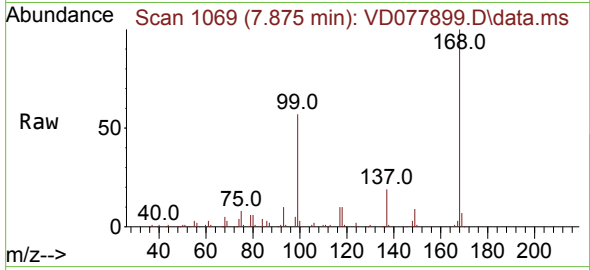
Quant Time: Dec 16 04:00:24 2023
 Quant Method : Z:\voasrv\HPCHEM1\MSVOA_D\Method\82D120823S.M
 Quant Title : SW846 8260
 QLast Update : Thu Dec 14 14:48:10 2023
 Response via : Initial Calibration



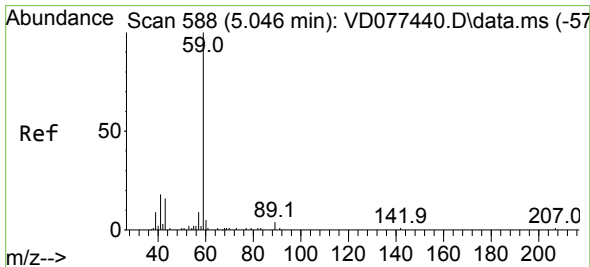
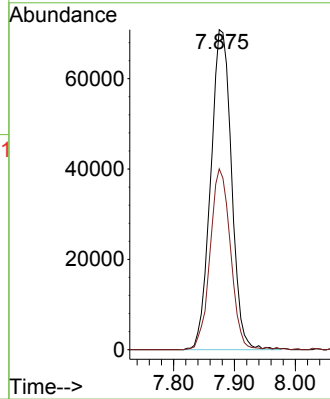
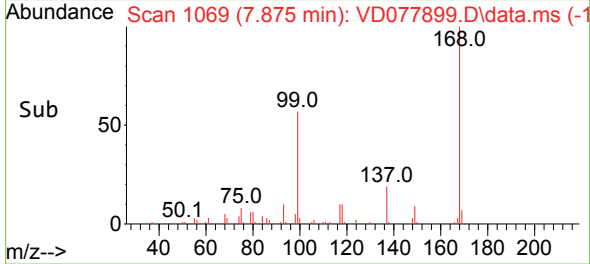


#1
 Pentafluorobenzene
 Concen: 50.000 ug/l
 RT: 7.875 min Scan# 1069
 Delta R.T. 0.000 min
 Lab File: VD077899.D
 Acq: 15 Dec 2023 13:14

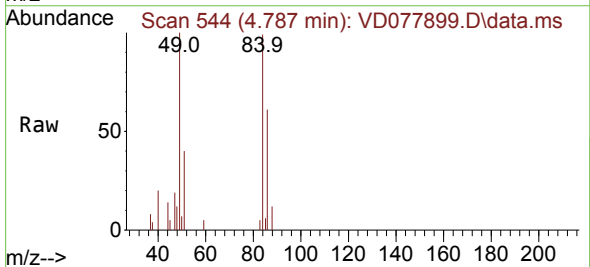
Instrument :
 MSVOA_D
 ClientSampleId :



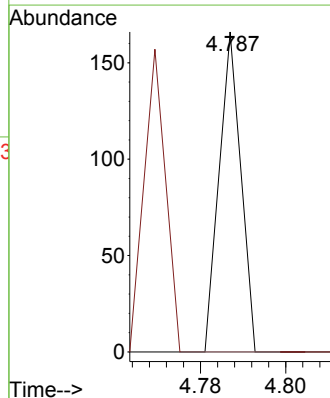
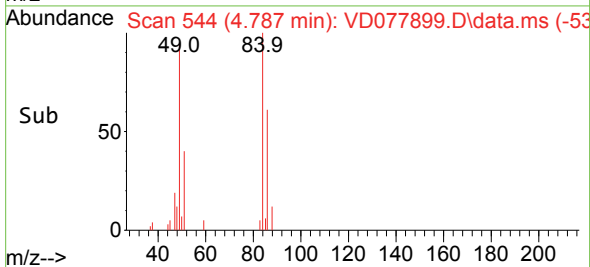
Tgt Ion:168 Resp: 168188
 Ion Ratio Lower Upper
 168 100
 99 56.5 36.7 55.1#

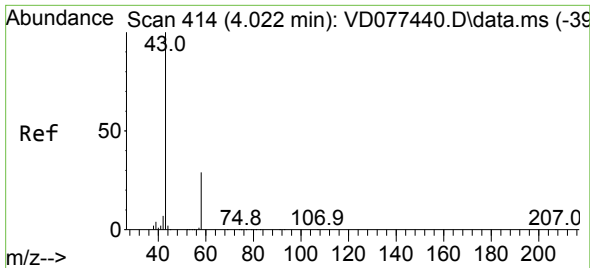


#11
 Tert butyl alcohol
 Concen: Below Cal
 RT: 4.787 min Scan# 544
 Delta R.T. -0.259 min
 Lab File: VD077899.D
 Acq: 15 Dec 2023 13:14



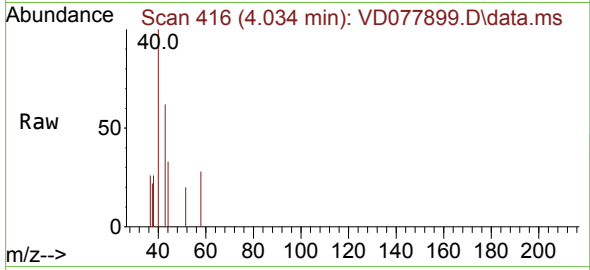
Tgt Ion: 59 Resp: 59
 Ion Ratio Lower Upper
 59 100
 57 93.2 7.8 11.8#



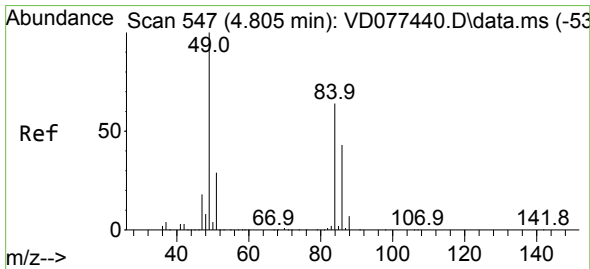
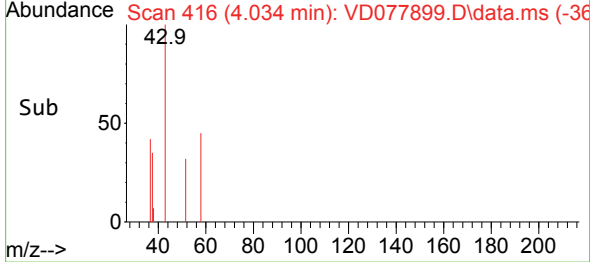
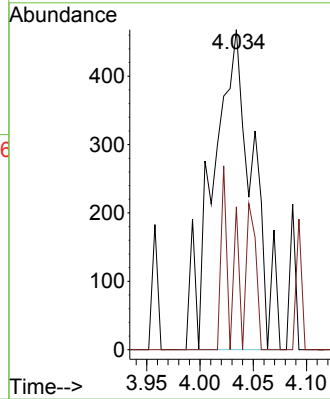


#16
 Acetone
 Concen: Below Cal
 RT: 4.034 min Scan# 416
 Delta R.T. 0.012 min
 Lab File: VD077899.D
 Acq: 15 Dec 2023 13:14

Instrument : MSVOA_D
 ClientSampleId :

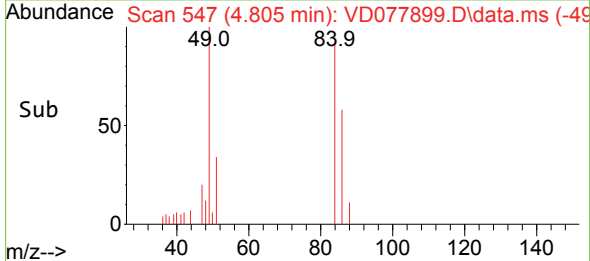
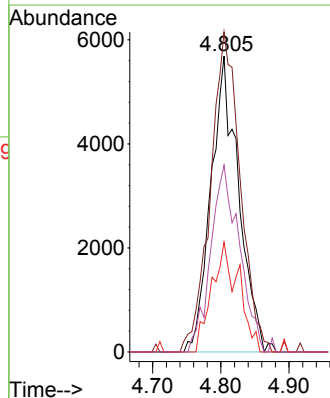
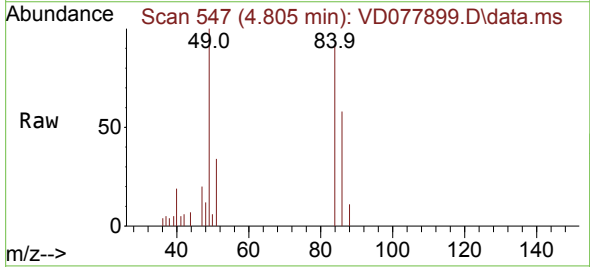


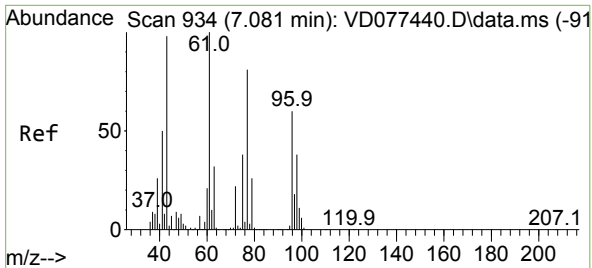
Tgt Ion: 43 Resp: 1222
 Ion Ratio Lower Upper
 43 100
 58 44.7 34.7 52.1



#20
 Methylene Chloride
 Concen: 2.262 ug/l
 RT: 4.805 min Scan# 547
 Delta R.T. -0.000 min
 Lab File: VD077899.D
 Acq: 15 Dec 2023 13:14

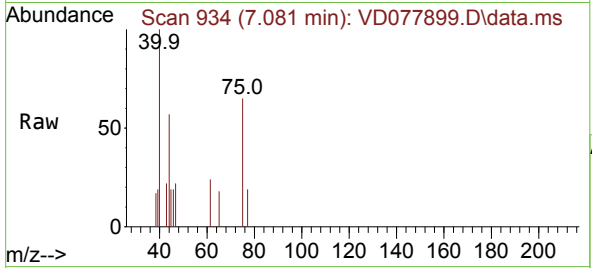
Tgt Ion: 84 Resp: 16164
 Ion Ratio Lower Upper
 84 100
 49 108.2 71.4 107.2#
 51 37.1 24.5 36.7#
 86 63.1 48.7 73.1



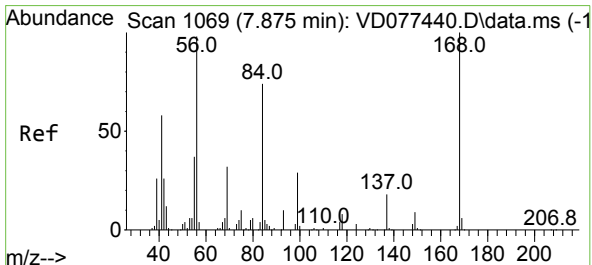
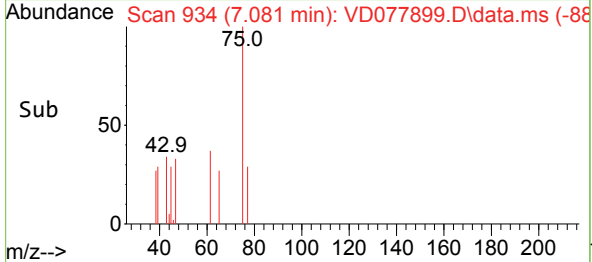
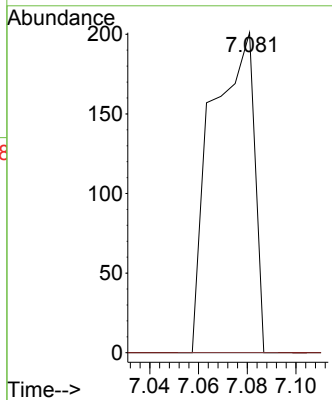


#25
 2-Butanone
 Concen: Below Cal
 RT: 7.081 min Scan# 91
 Delta R.T. -0.000 min
 Lab File: VD077899.D
 Acq: 15 Dec 2023 13:14

Instrument :
 MSVOA_D
 ClientSampleId :

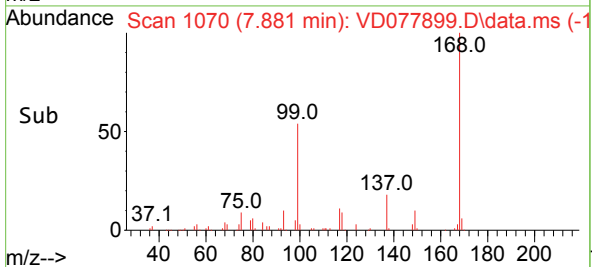
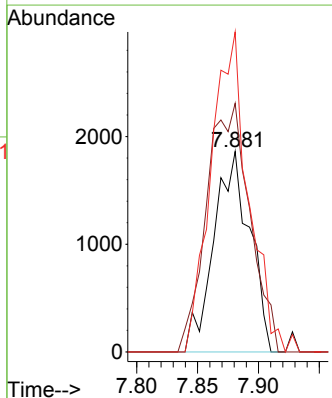
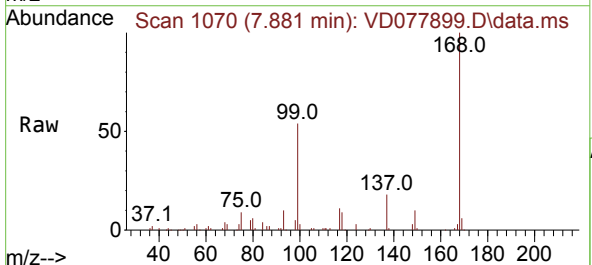


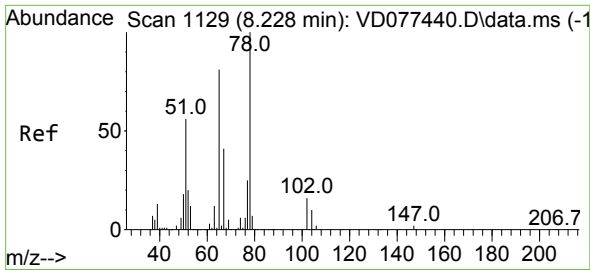
Tgt Ion: 43 Resp: 243
 Ion Ratio Lower Upper
 43 100
 72 0.0 30.7 46.1#



#31
 Cyclohexane
 Concen: 1.085 ug/l
 RT: 7.881 min Scan# 1070
 Delta R.T. 0.006 min
 Lab File: VD077899.D
 Acq: 15 Dec 2023 13:14

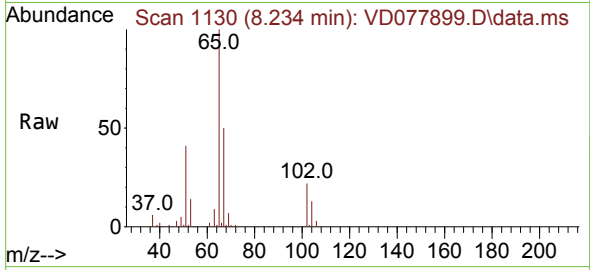
Tgt Ion: 56 Resp: 3825
 Ion Ratio Lower Upper
 56 100
 69 124.1 28.6 43.0#
 84 159.6 84.8 127.2#



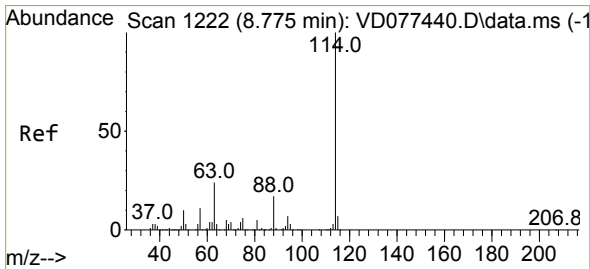
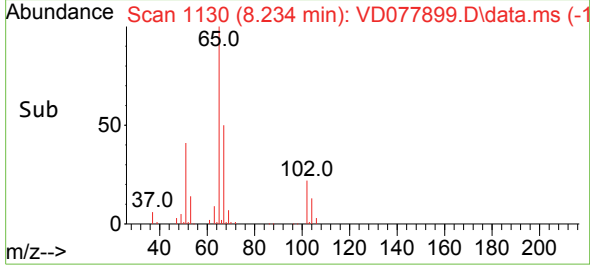
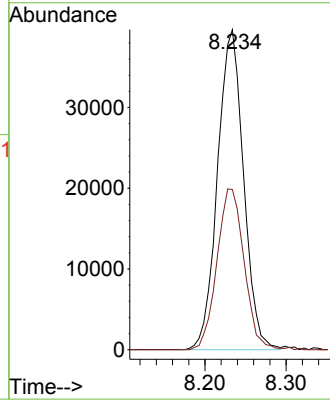


#33
 1,2-Dichloroethane-d4
 Concen: 44.562 ug/l
 RT: 8.234 min Scan# 1129
 Delta R.T. 0.006 min
 Lab File: VD077899.D
 Acq: 15 Dec 2023 13:14

Instrument :
 MSVOA_D
 ClientSampleId :

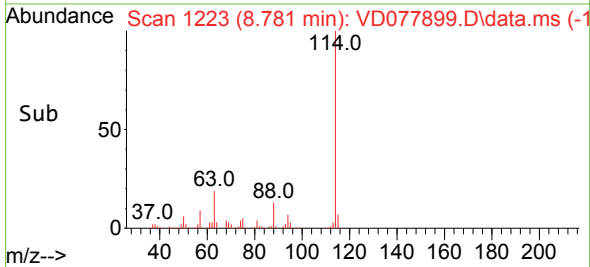
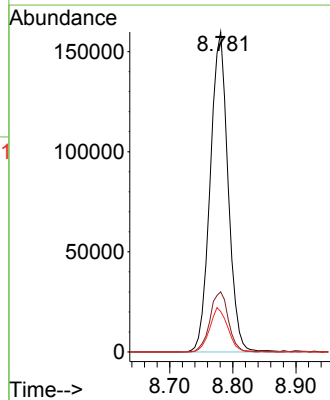
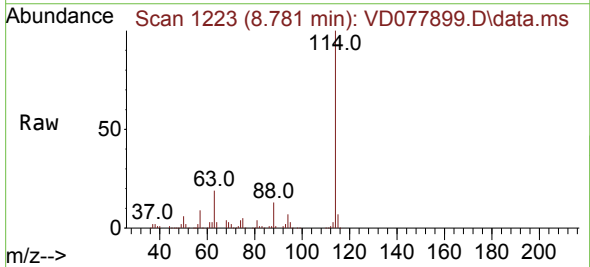


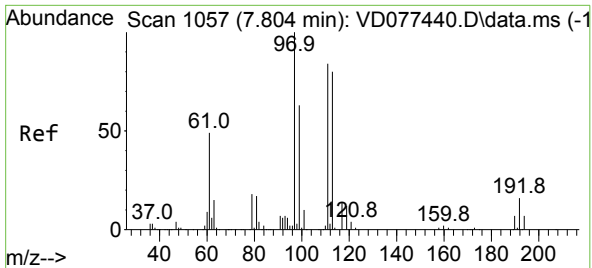
Tgt Ion: 65 Resp: 88315
 Ion Ratio Lower Upper
 65 100
 67 52.6 0.0 115.0



#34
 1,4-Difluorobenzene
 Concen: 50.000 ug/l
 RT: 8.781 min Scan# 1223
 Delta R.T. 0.006 min
 Lab File: VD077899.D
 Acq: 15 Dec 2023 13:14

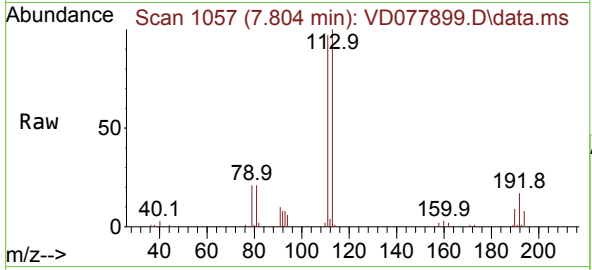
Tgt Ion: 114 Resp: 313173
 Ion Ratio Lower Upper
 114 100
 63 18.8 0.0 33.4
 88 12.7 0.0 26.2





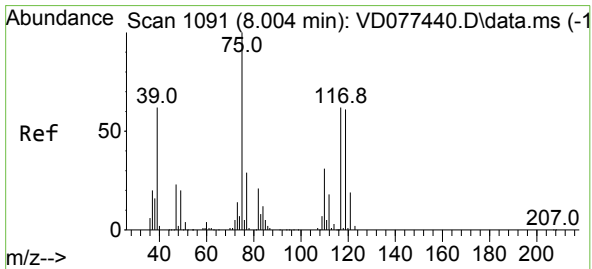
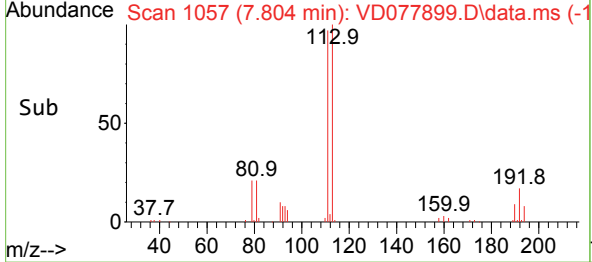
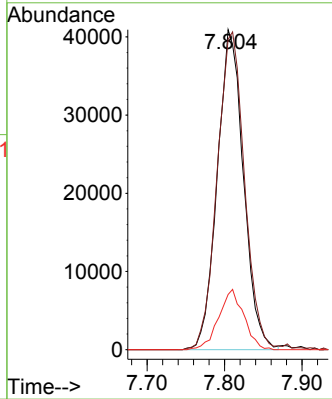
#35
 Dibromofluoromethane
 Concen: 43.844 ug/l
 RT: 7.804 min Scan# 1070
 Delta R.T. 0.000 min
 Lab File: VD077899.D
 Acq: 15 Dec 2023 13:14

Instrument : MSVOA_D
 ClientSampleId :



Tgt Ion: 113 Resp: 96179

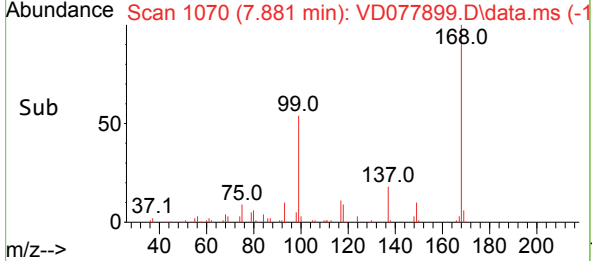
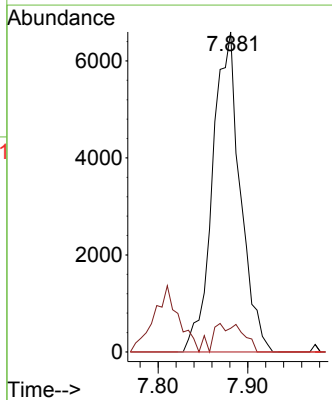
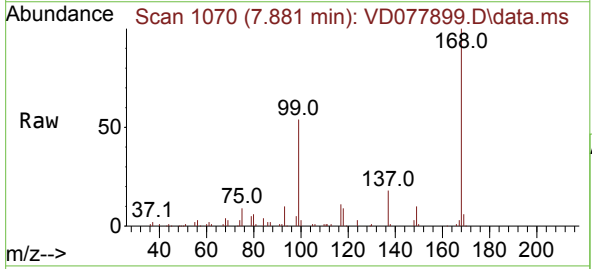
Ion	Ratio	Lower	Upper
113	100		
111	103.5	84.7	127.1
192	18.1	16.8	25.2

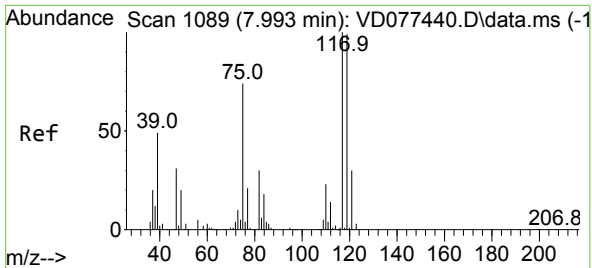


#36
 1,1-Dichloropropene
 Concen: 4.026 ug/l
 RT: 7.881 min Scan# 1070
 Delta R.T. -0.123 min
 Lab File: VD077899.D
 Acq: 15 Dec 2023 13:14

Tgt Ion: 75 Resp: 14128

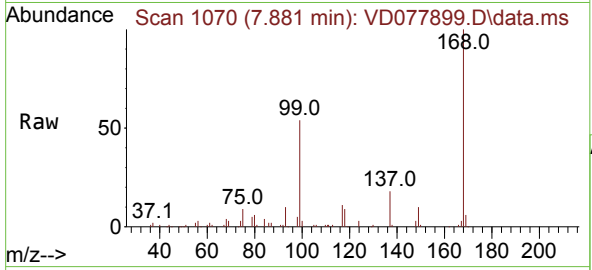
Ion	Ratio	Lower	Upper
75	100		
110	9.7	19.9	59.6#
77	0.0	24.7	37.1#



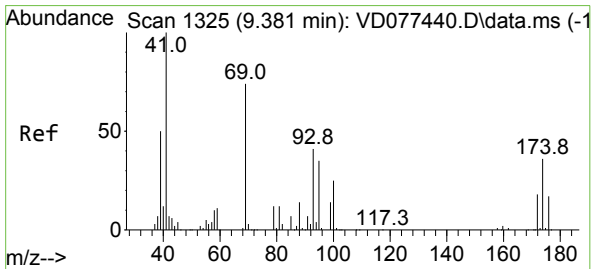
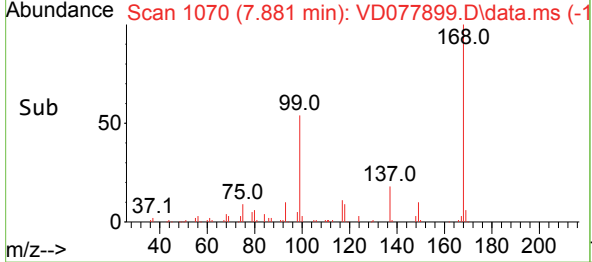
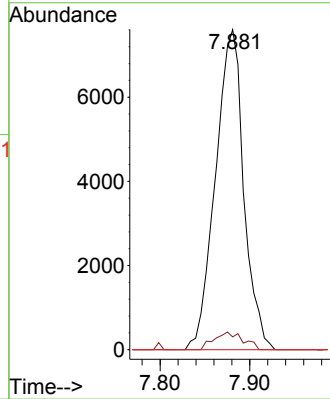


#38
 Carbon Tetrachloride
 Concen: 4.757 ug/l
 RT: 7.881 min Scan# 1089
 Delta R.T. -0.112 min
 Lab File: VD077899.D
 Acq: 15 Dec 2023 13:14

Instrument : MSVOA_D
 ClientSampleId :

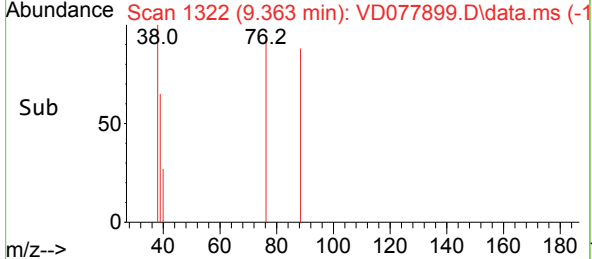
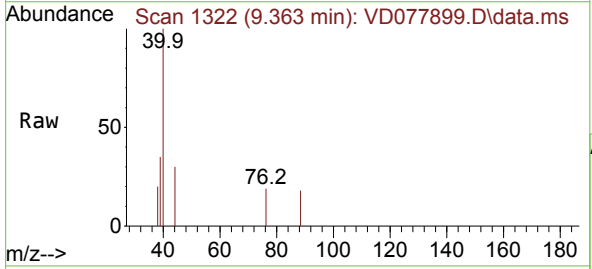
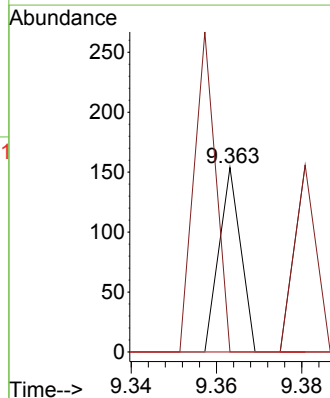


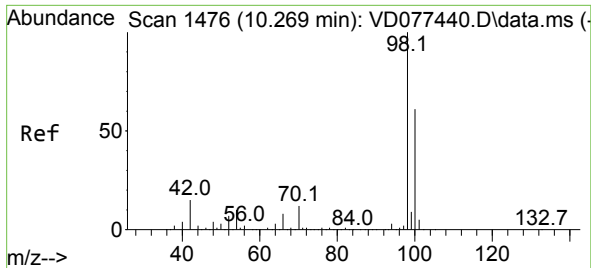
Tgt Ion: 117 Resp: 16640
 Ion Ratio Lower Upper
 117 100
 119 4.0 78.0 117.0#
 121 0.0 24.2 36.2#



#49
 1,4-Dioxane
 Concen: 4.245 ug/l
 RT: 9.363 min Scan# 1322
 Delta R.T. -0.018 min
 Lab File: VD077899.D
 Acq: 15 Dec 2023 13:14

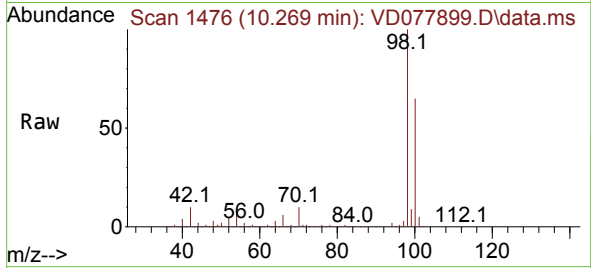
Tgt Ion: 88 Resp: 54
 Ion Ratio Lower Upper
 88 100
 43 174.1 19.0 28.6#
 58 0.0 43.5 65.3#



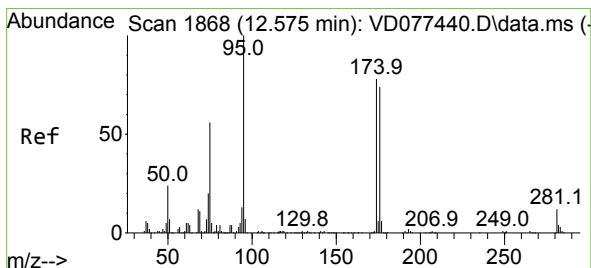
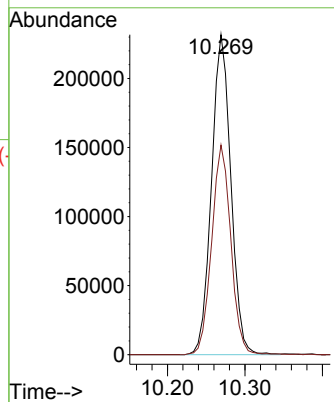
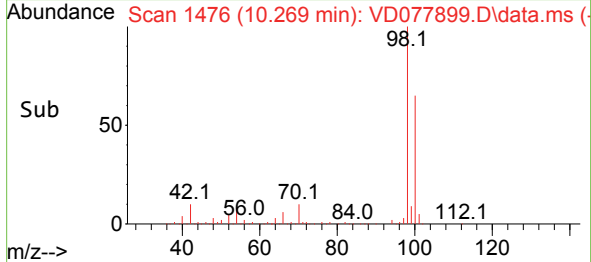


#50
 Toluene-d8
 Concen: 45.723 ug/l
 RT: 10.269 min Scan# 1476
 Delta R.T. -0.000 min
 Lab File: VD077899.D
 Acq: 15 Dec 2023 13:14

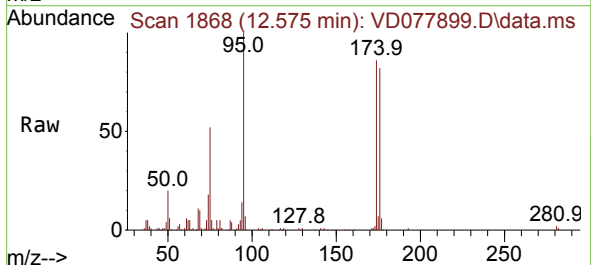
Instrument : MSVOA_D
 ClientSampleId :



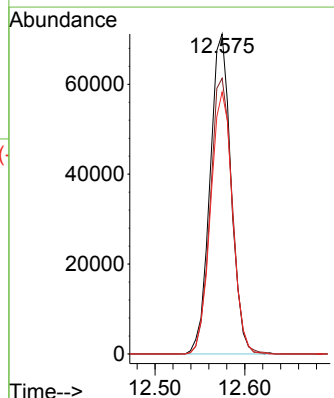
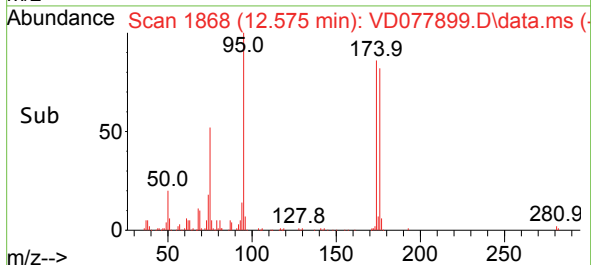
Tgt Ion: 98 Resp: 401718
 Ion Ratio Lower Upper
 98 100
 100 64.9 50.3 75.5

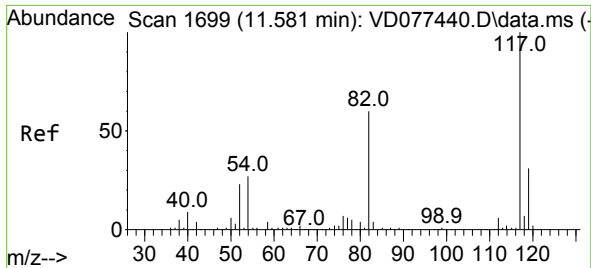


#62
 4-Bromofluorobenzene
 Concen: 44.080 ug/l
 RT: 12.575 min Scan# 1868
 Delta R.T. -0.000 min
 Lab File: VD077899.D
 Acq: 15 Dec 2023 13:14



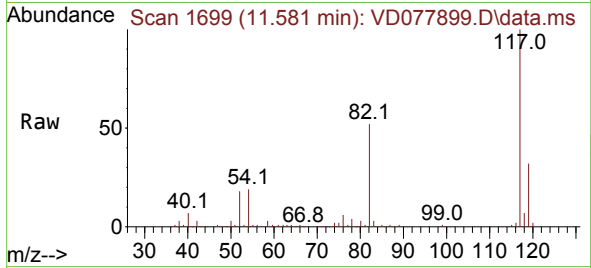
Tgt Ion: 95 Resp: 115789
 Ion Ratio Lower Upper
 95 100
 174 89.8 0.0 201.8
 176 85.3 0.0 191.8



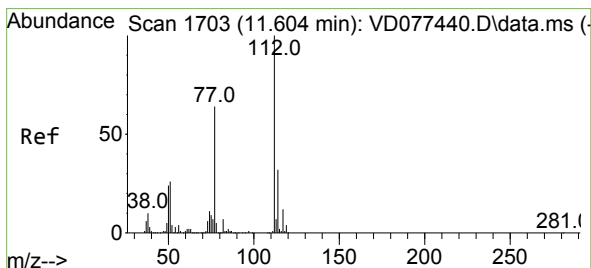
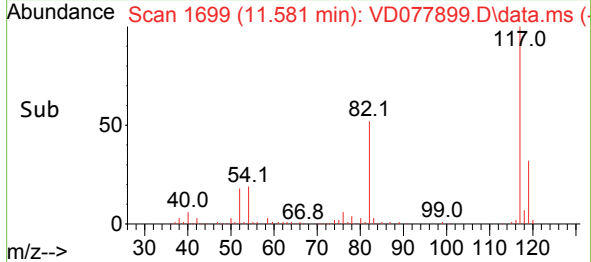
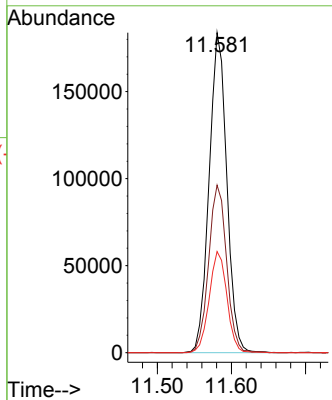


#63
 Chlorobenzene-d5
 Concen: 50.000 ug/l
 RT: 11.581 min Scan# 1170
 Delta R.T. -0.000 min
 Lab File: VD077899.D
 Acq: 15 Dec 2023 13:14

Instrument : MSVOA_D
 ClientSampleId :

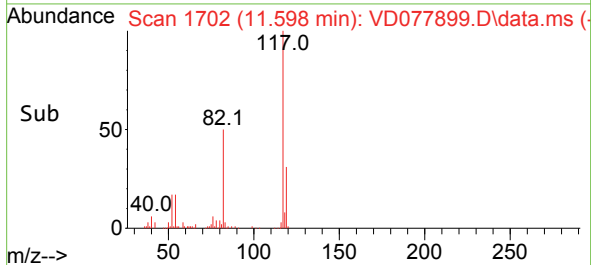
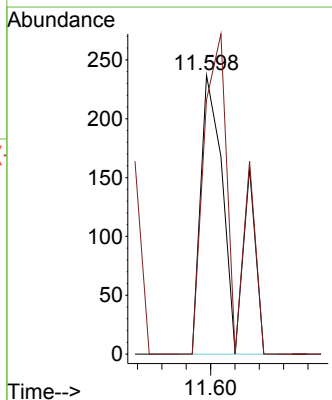
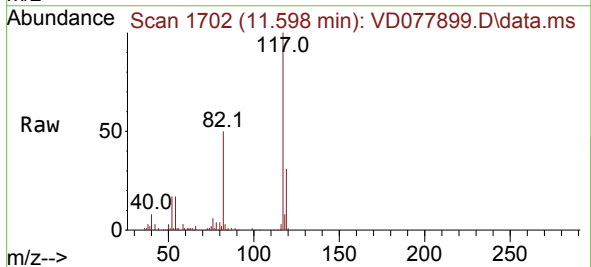


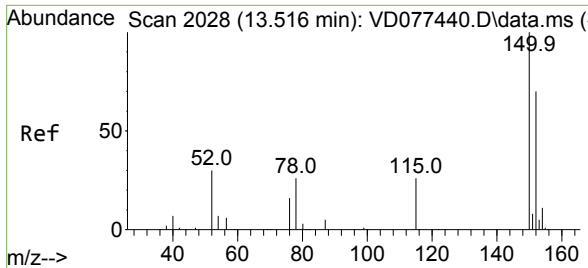
Tgt Ion:117 Resp: 304400
 Ion Ratio Lower Upper
 117 100
 82 52.3 38.3 57.5
 119 31.6 25.0 37.4



#65
 Chlorobenzene
 Concen: Below Cal
 RT: 11.598 min Scan# 1702
 Delta R.T. -0.006 min
 Lab File: VD077899.D
 Acq: 15 Dec 2023 13:14

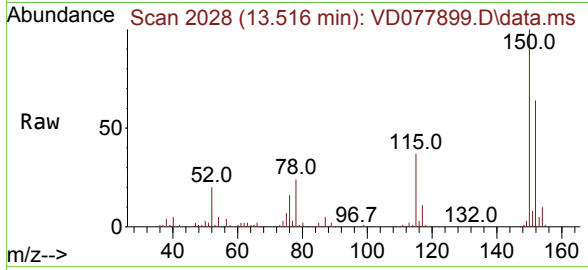
Tgt Ion:112 Resp: 199
 Ion Ratio Lower Upper
 112 100
 114 91.1 25.1 37.7#



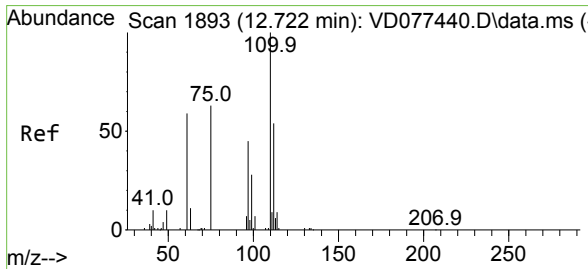
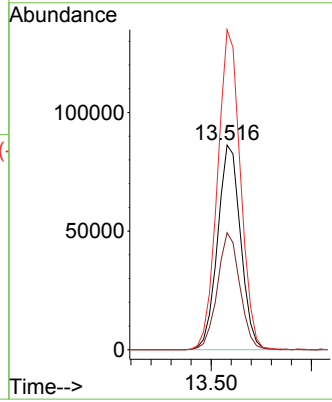
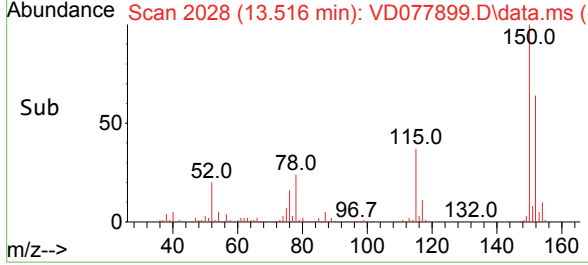


#72
 1,4-Dichlorobenzene-d4
 Concen: 50.000 ug/l
 RT: 13.516 min Scan# 20
 Delta R.T. -0.000 min
 Lab File: VD077899.D
 Acq: 15 Dec 2023 13:14

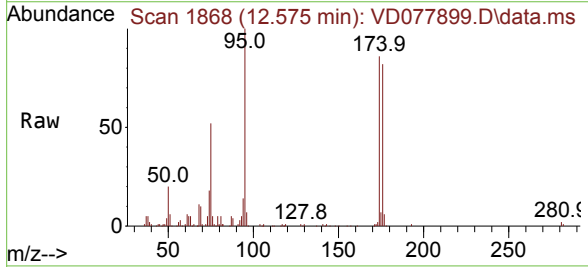
Instrument :
 MSVOA_D
 ClientSampleId :



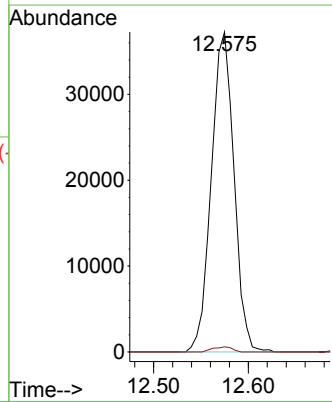
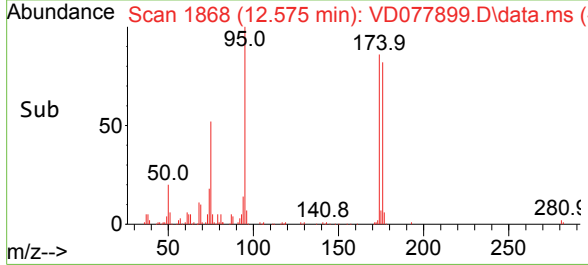
Tgt Ion:152 Resp: 137265
 Ion Ratio Lower Upper
 152 100
 115 56.0 27.1 81.3
 150 155.9 0.0 353.6

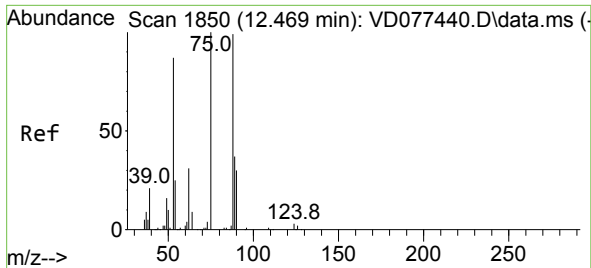


#76
 1,2,3-Trichloropropane
 Concen: 51.934 ug/l
 RT: 12.575 min Scan# 1868
 Delta R.T. -0.147 min
 Lab File: VD077899.D
 Acq: 15 Dec 2023 13:14



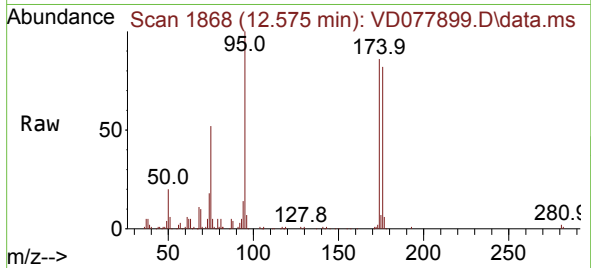
Tgt Ion: 75 Resp: 61913
 Ion Ratio Lower Upper
 75 100
 77 1.4 0.0 0.0#



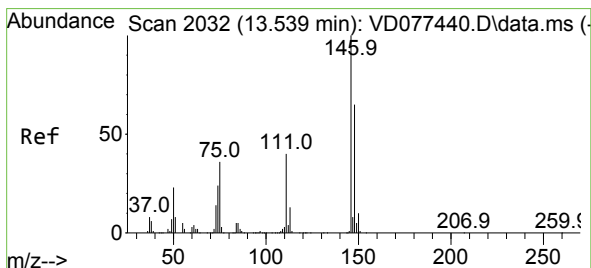
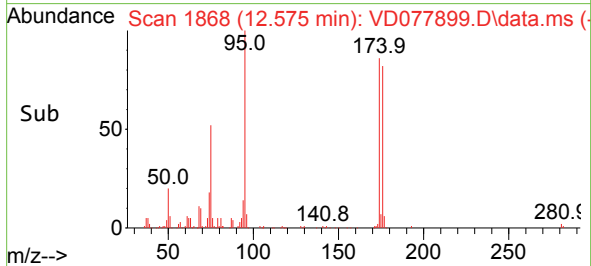
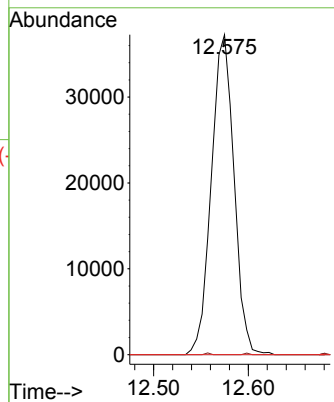


#81
 trans-1,4-Dichloro-2-butene
 Concen: 105.221 ug/l
 RT: 12.575 min Scan# 1868
 Delta R.T. 0.106 min
 Lab File: VD077899.D
 Acq: 15 Dec 2023 13:14

Instrument : MSVOA_D
 ClientSampleId :



Tgt Ion	Resp	Lower	Upper
75	100		
53	0.1	63.0	94.4#
89	0.0	37.9	56.9#



#88
 1,4-Dichlorobenzene
 Concen: Below Cal
 RT: 13.534 min Scan# 2031
 Delta R.T. -0.005 min
 Lab File: VD077899.D
 Acq: 15 Dec 2023 13:14

Tgt Ion	Resp	Lower	Upper
146	100		
111	324.7	17.4	52.3#
148	182.5	31.7	95.1#

