

Data Path : Z:\voasrv\HPCHEM1\MSVOA_D\Data\VD121523\
 Data File : VD077898.D
 Acq On : 15 Dec 2023 12:47
 Operator : RP/MD
 Sample : 05611-07
 Misc : 5.05G/5.0ml/MSVOA_D/SOIL
 ALS Vial : 9 Sample Multiplier: 1

Instrument :
 MSVOA_D
 ClientSampleId :
 PE-7

Quant Time: Dec 16 03:59:53 2023
 Quant Method : Z:\voasrv\HPCHEM1\MSVOA_D\Method\82D120823S.M
 Quant Title : SW846 8260
 QLast Update : Thu Dec 14 14:48:10 2023
 Response via : Initial Calibration

Compound	R.T.	QIon	Response	Conc	Units	Dev(Min)
Internal Standards						
1) Pentafluorobenzene	7.875	168	7997	50.000	ug/l	# 0.00
34) 1,4-Difluorobenzene	8.781	114	14422	50.000	ug/l	0.00
63) Chlorobenzene-d5	11.581	117	13617	50.000	ug/l	# 0.00
72) 1,4-Dichlorobenzene-d4	13.522	152	6404	50.000	ug/l	0.00
System Monitoring Compounds						
33) 1,2-Dichloroethane-d4	8.240	65	6082	64.542	ug/l	0.01
Spiked Amount	50.000	Range	50 - 163	Recovery	=	129.080%
35) Dibromofluoromethane	7.810	113	4939	48.891	ug/l	0.00
Spiked Amount	50.000	Range	54 - 147	Recovery	=	97.780%
50) Toluene-d8	10.275	98	17850	44.117	ug/l	0.00
Spiked Amount	50.000	Range	58 - 134	Recovery	=	88.240%
62) 4-Bromofluorobenzene	12.569	95	4737	39.160	ug/l	0.00
Spiked Amount	50.000	Range	30 - 143	Recovery	=	78.320%

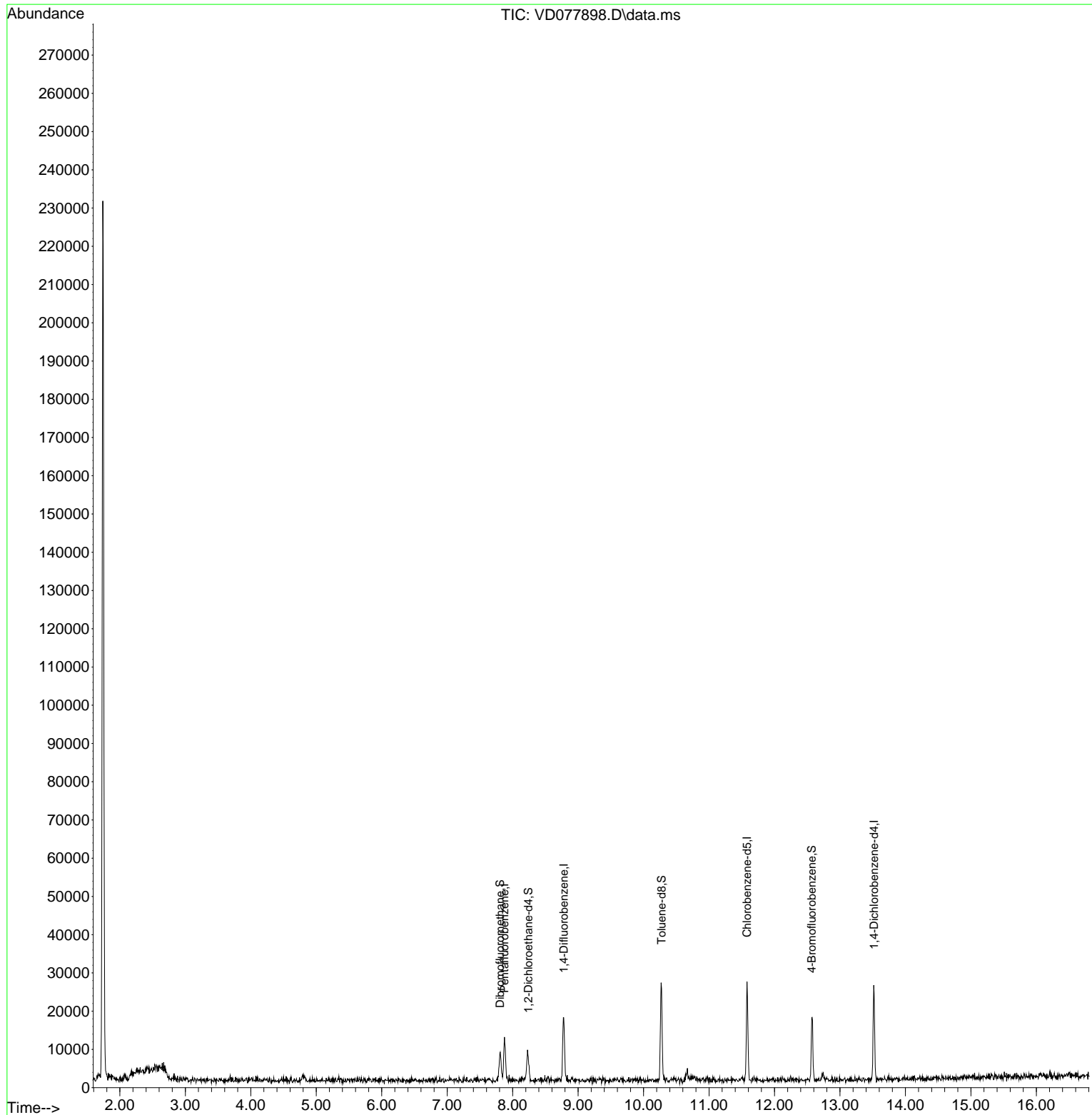
Target Compounds Qvalue

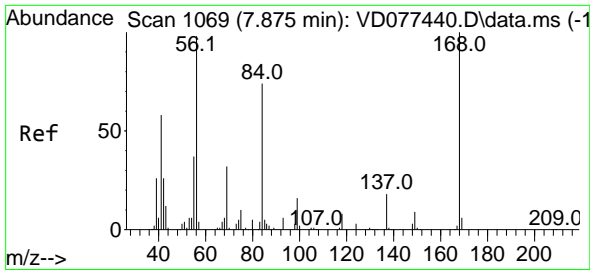
(#) = qualifier out of range (m) = manual integration (+) = signals summed

Data Path : Z:\voasrv\HPCHEM1\MSVOA_D\Data\VD121523\
 Data File : VD077898.D
 Acq On : 15 Dec 2023 12:47
 Operator : RP/MD
 Sample : 05611-07
 Misc : 5.05G/5.0ml/MSVOA_D/SOIL
 ALS Vial : 9 Sample Multiplier: 1

Instrument :
 MSVOA_D
 ClientSampleId :
 PE-7

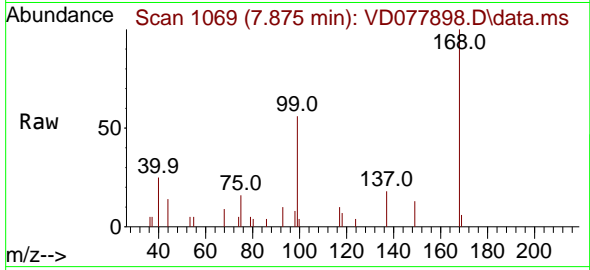
Quant Time: Dec 16 03:59:53 2023
 Quant Method : Z:\voasrv\HPCHEM1\MSVOA_D\Method\82D120823S.M
 Quant Title : SW846 8260
 QLast Update : Thu Dec 14 14:48:10 2023
 Response via : Initial Calibration



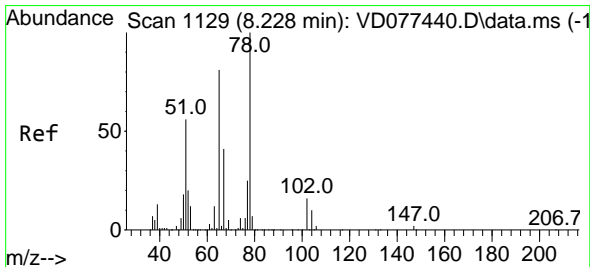
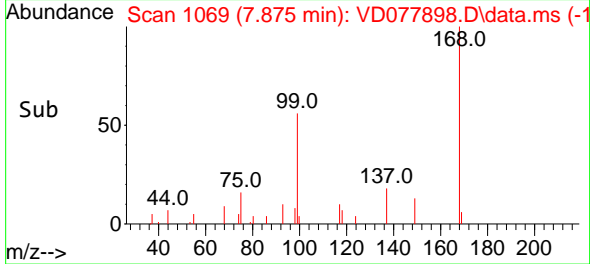
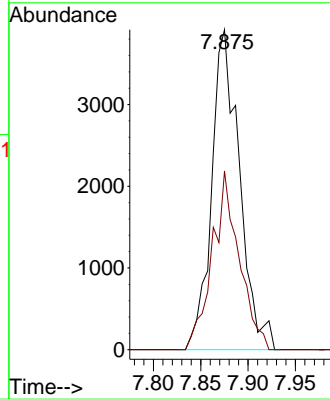


#1
 Pentafluorobenzene
 Concen: 50.000 ug/l
 RT: 7.875 min Scan# 1069
 Delta R.T. 0.000 min
 Lab File: VD077898.D
 Acq: 15 Dec 2023 12:47

Instrument :
 MSVOA_D
 ClientSampleId :
 PE-7

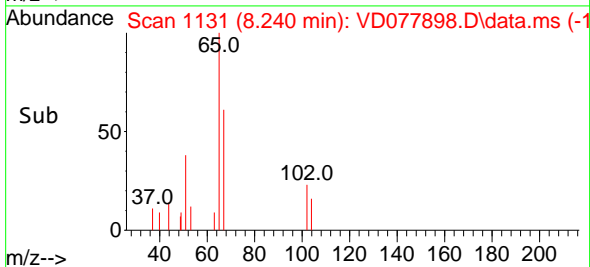
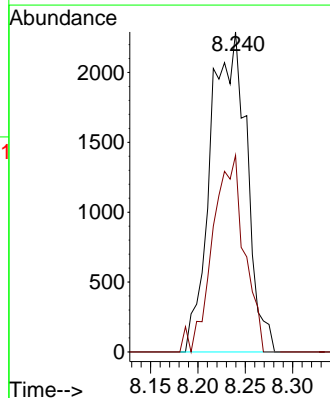
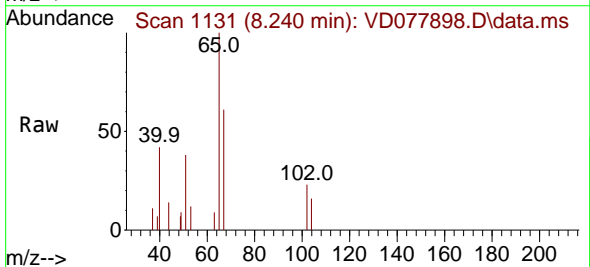


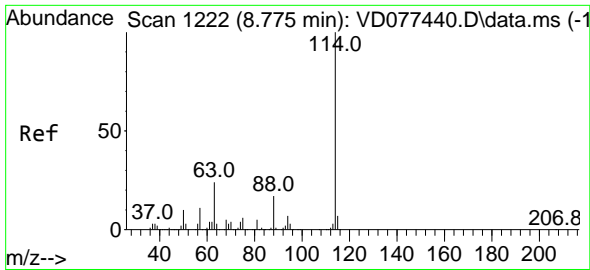
Tgt Ion:168 Resp: 7997
 Ion Ratio Lower Upper
 168 100
 99 55.8 36.7 55.1#



#33
 1,2-Dichloroethane-d4
 Concen: 64.542 ug/l
 RT: 8.240 min Scan# 1131
 Delta R.T. 0.012 min
 Lab File: VD077898.D
 Acq: 15 Dec 2023 12:47

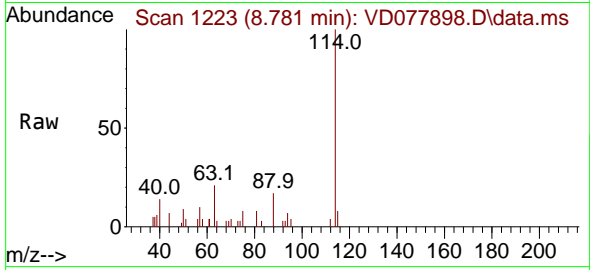
Tgt Ion: 65 Resp: 6082
 Ion Ratio Lower Upper
 65 100
 67 53.8 0.0 115.0



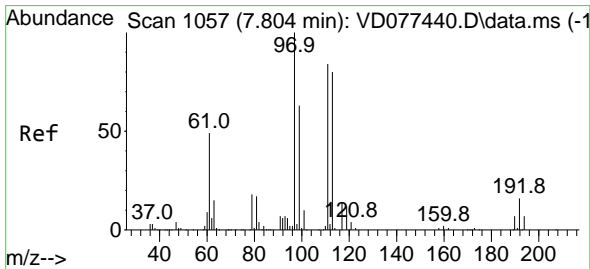
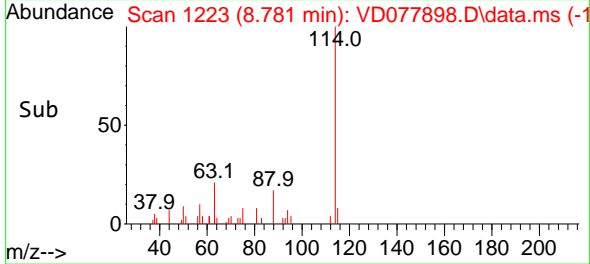
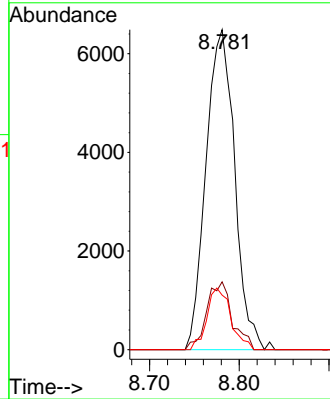


#34
 1,4-Difluorobenzene
 Concen: 50.000 ug/l
 RT: 8.781 min Scan# 11
 Delta R.T. 0.006 min
 Lab File: VD077898.D
 Acq: 15 Dec 2023 12:47

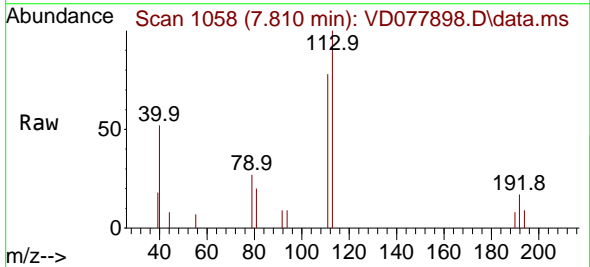
Instrument :
 MSVOA_D
 ClientSampleId :
 PE-7



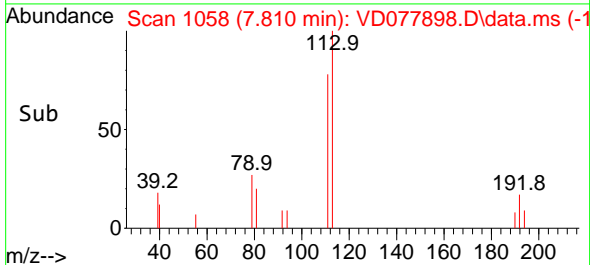
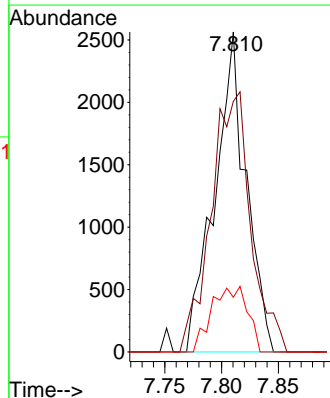
Tgt Ion	Resp	Lower	Upper
114	14422		
63	21.2	0.0	33.4
88	17.0	0.0	26.2

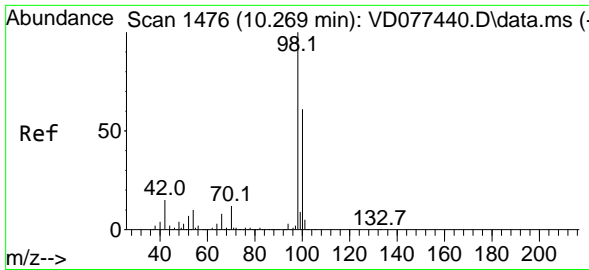


#35
 Dibromofluoromethane
 Concen: 48.891 ug/l
 RT: 7.810 min Scan# 1058
 Delta R.T. 0.006 min
 Lab File: VD077898.D
 Acq: 15 Dec 2023 12:47



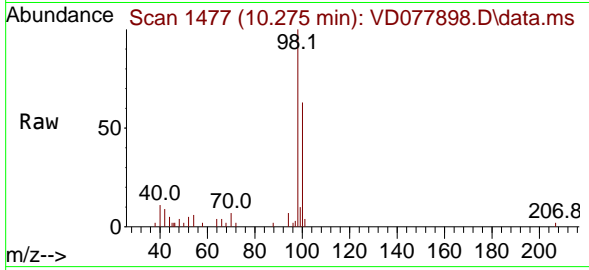
Tgt Ion	Resp	Lower	Upper
113	4939		
113	100		
111	102.3	84.7	127.1
192	23.3	16.8	25.2



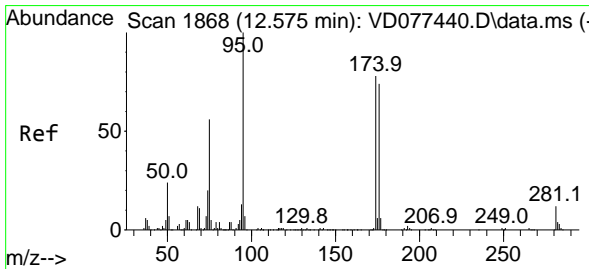
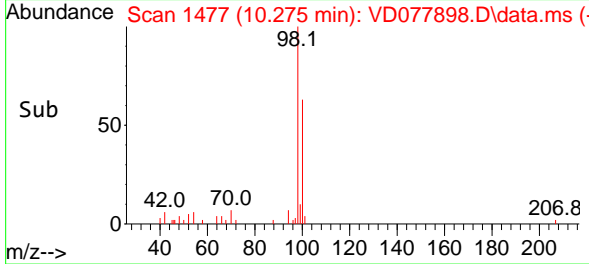
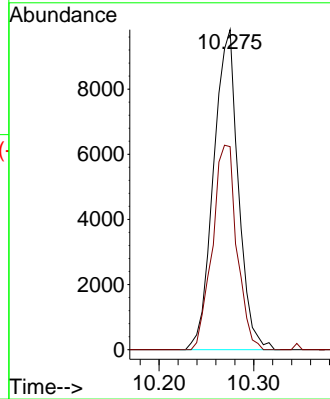


#50
 Toluene-d8
 Concen: 44.117 ug/l
 RT: 10.275 min Scan# 1477
 Delta R.T. 0.006 min
 Lab File: VD077898.D
 Acq: 15 Dec 2023 12:47

Instrument : MSVOA_D
 ClientSampleId : PE-7

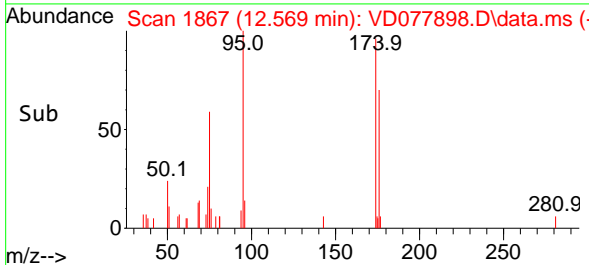
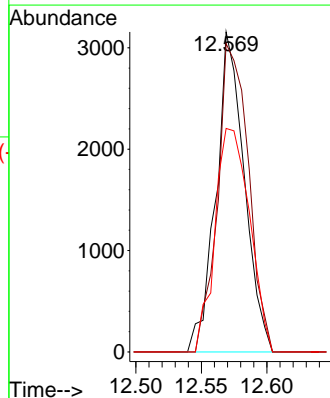
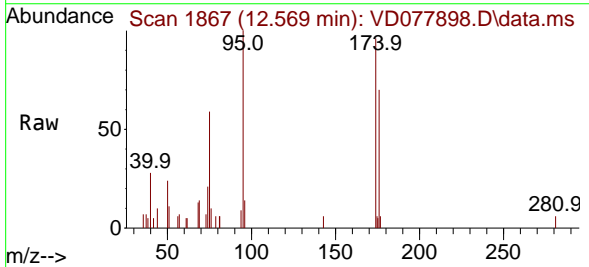


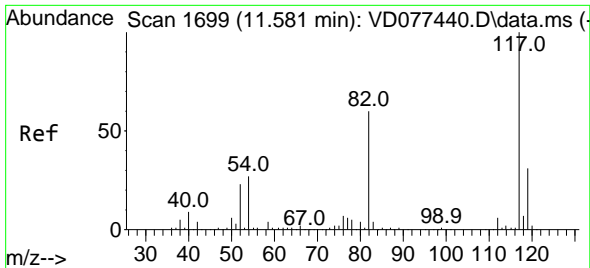
Tgt Ion: 98 Resp: 17850
 Ion Ratio Lower Upper
 98 100
 100 63.1 50.3 75.5



#62
 4-Bromofluorobenzene
 Concen: 39.160 ug/l
 RT: 12.569 min Scan# 1867
 Delta R.T. -0.006 min
 Lab File: VD077898.D
 Acq: 15 Dec 2023 12:47

Tgt Ion: 95 Resp: 4737
 Ion Ratio Lower Upper
 95 100
 174 104.8 0.0 201.8
 176 85.4 0.0 191.8



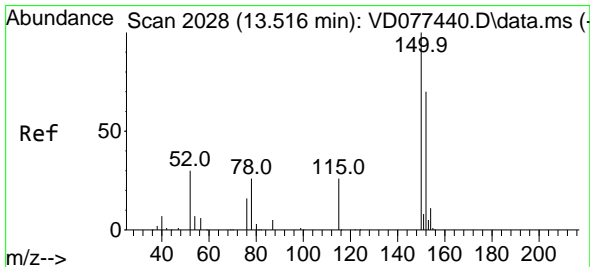
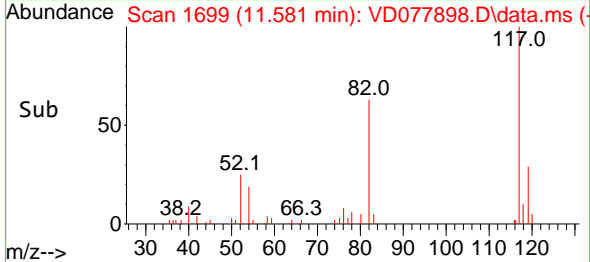
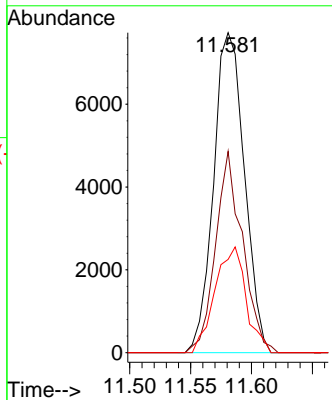
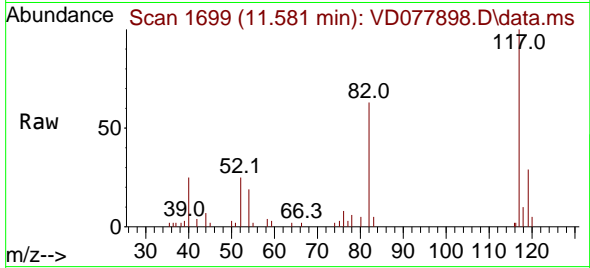


#63
 Chlorobenzene-d5
 Concen: 50.000 ug/l
 RT: 11.581 min Scan# 1699
 Delta R.T. -0.000 min
 Lab File: VD077898.D
 Acq: 15 Dec 2023 12:47

Instrument : MSVOA_D
 ClientSampleId : PE-7

Tgt Ion:117 Resp: 13617

Ion	Ratio	Lower	Upper
117	100		
82	62.9	38.3	57.5#
119	29.2	25.0	37.4



#72
 1,4-Dichlorobenzene-d4
 Concen: 50.000 ug/l
 RT: 13.522 min Scan# 2029
 Delta R.T. 0.006 min
 Lab File: VD077898.D
 Acq: 15 Dec 2023 12:47

Tgt Ion:152 Resp: 6404

Ion	Ratio	Lower	Upper
152	100		
115	60.5	27.1	81.3
150	160.8	0.0	353.6

