

Data Path : Z:\VOASRV\HPCHEM1\MSVOA D\DATA\VD121718\
 Data File : VD060596.D
 Acq On : 17 Dec 2018 13:41
 Operator : VA/AP
 Sample : J6453-01
 Misc : 7.31g/5ml/MSVOA D/SOIL
 ALS Vial : 7 Sample Multiplier: 1

Instrument :
 MSVOA_D
 ClientSampleId :
 SS-SOIL

Quant Time: Dec 18 13:07:47 2018
 Quant Method : Z:\VOASRV\HPCHEM1\MSVOA_D\METHOD\82D120518S.M
 Quant Title : SW846 8260
 QLast Update : Thu Dec 06 01:49:20 2018
 Response via : Initial Calibration

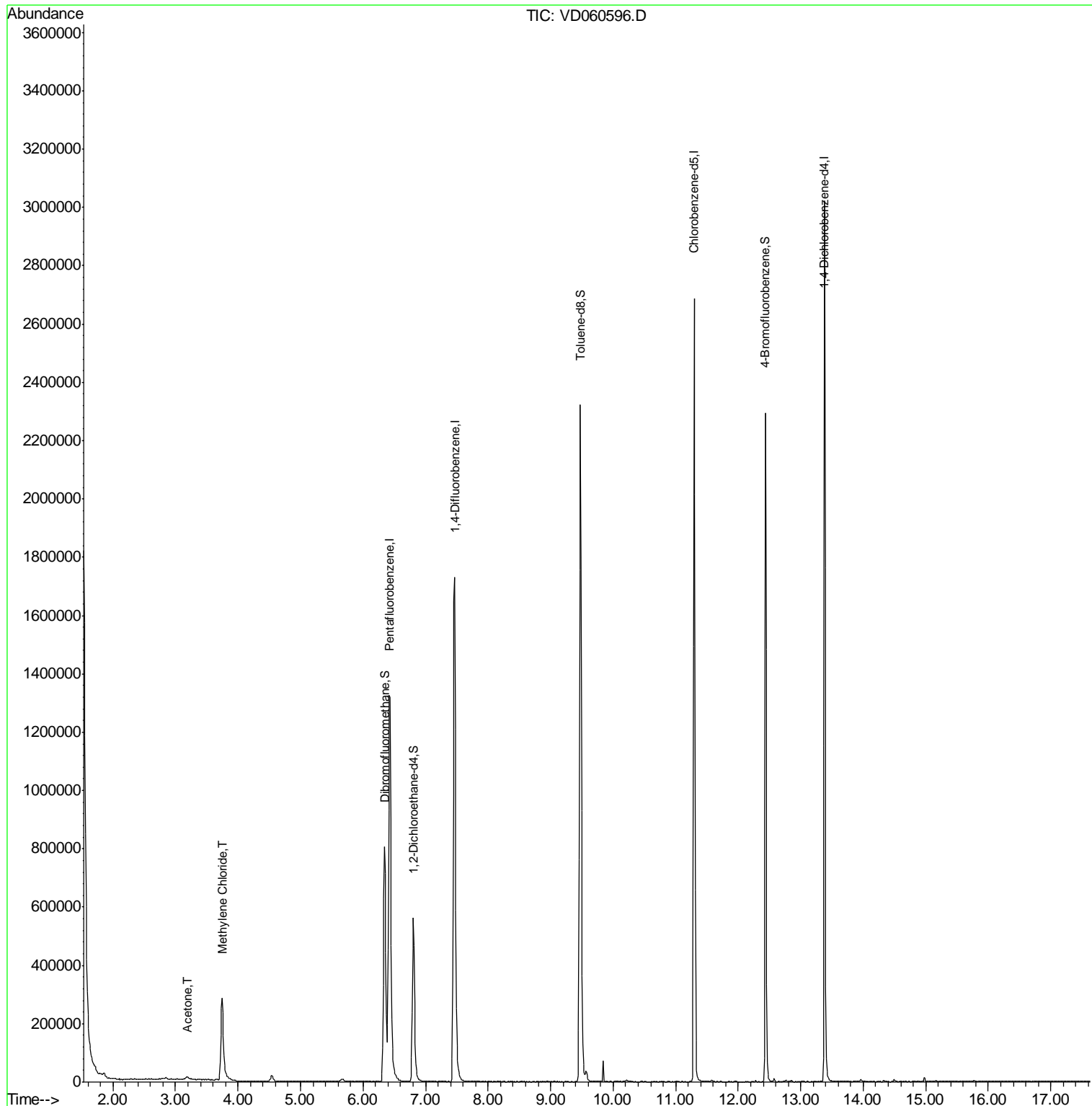
Internal Standards	R.T.	QIon	Response	Conc	Units	Dev(Min)
1) Pentafluorobenzene	6.43	168	1354552	50.00	ug/l	0.01
34) 1,4-Difluorobenzene	7.47	114	1879466	50.00	ug/l	0.01
63) Chlorobenzene-d5	11.29	117	1470637	50.00	ug/l	0.01
72) 1,4-Dichlorobenzene-d4	13.38	152	677400	50.00	ug/l	0.00
System Monitoring Compounds						
33) 1,2-Dichloroethane-d4	6.81	65	475957	49.57	ug/l	0.01
Spiked Amount				50.000		
			Recovery	=	99.14%	
35) Dibromofluoromethane	6.34	113	642896	46.57	ug/l	0.01
Spiked Amount				50.000		
			Recovery	=	93.14%	
50) Toluene-d8	9.47	98	1845622	46.20	ug/l	0.01
Spiked Amount				50.000		
			Recovery	=	92.40%	
62) 4-Bromofluorobenzene	12.44	95	615796	43.08	ug/l	0.00
Spiked Amount				50.000		
			Recovery	=	86.16%	
Target Compounds						
16) Acetone	3.19	43	23024	14.961	ug/l	97
20) Methylene Chloride	3.75	84	189546	9.819	ug/l	96

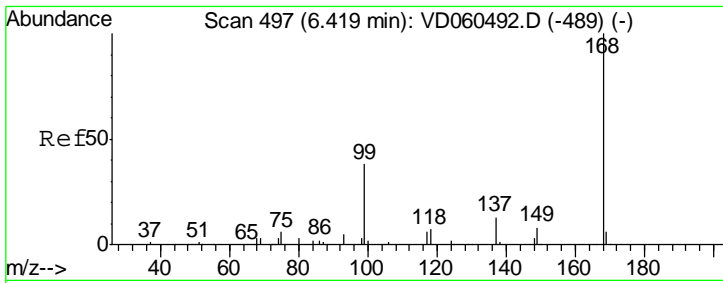
(#) = qualifier out of range (m) = manual integration (+) = signals summed

Data Path : Z:\VOASRV\HPCHEM1\MSVOA D\DATA\VD121718\
 Data File : VD060596.D
 Acq On : 17 Dec 2018 13:41
 Operator : VA/AP
 Sample : J6453-01
 Misc : 7.31g/5ml/MSVOA D/SOIL
 ALS Vial : 7 Sample Multiplier: 1

Instrument :
 MSVOA_D
 ClientSampled :
 SS-SOIL

Quant Time: Dec 18 13:07:47 2018
 Quant Method : Z:\VOASRV\HPCHEM1\MSVOA_D\METHOD\82D120518S.M
 Quant Title : SW846 8260
 QLast Update : Thu Dec 06 01:49:20 2018
 Response via : Initial Calibration

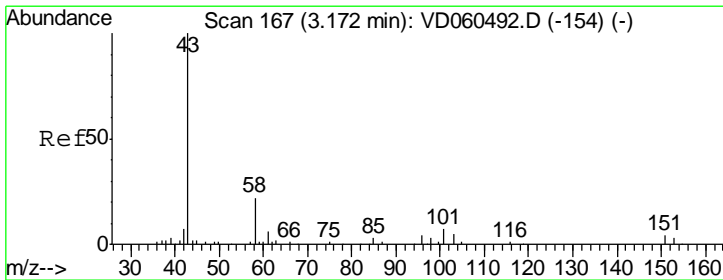
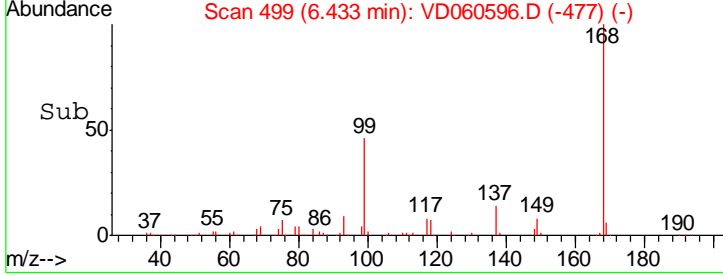
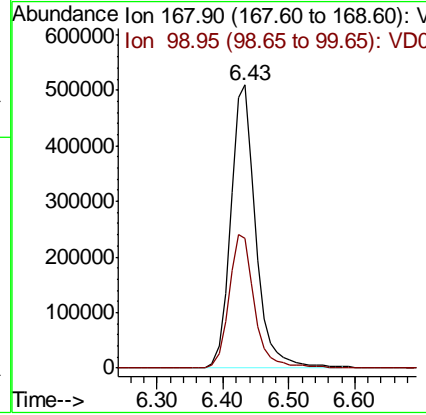
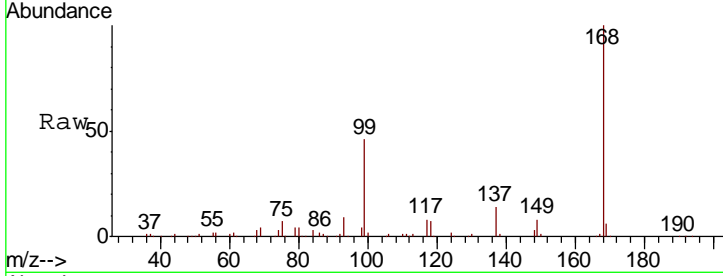




#1
 Pentafluorobenzene
 Concen: 50.000 ug/l
 RT: 6.43 min Scan# 499
 Delta R.T. 0.01 min
 Lab File: VD060596.D
 Acq: 17 Dec 2018 13:41

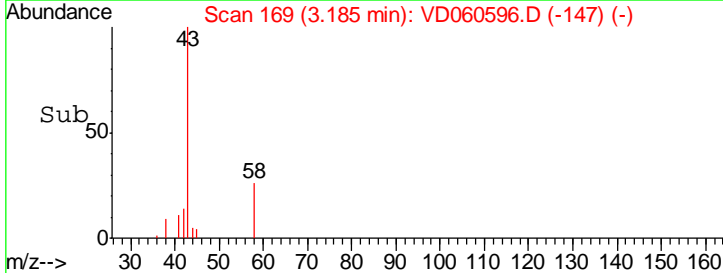
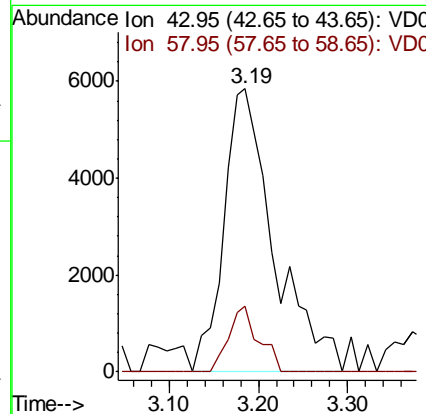
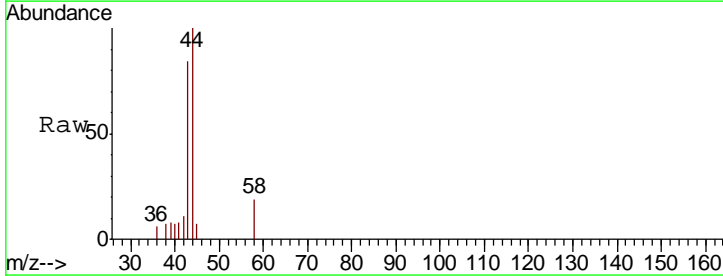
Instrument :
 MSVOA_D
 ClientSampled :
 SS-SOIL

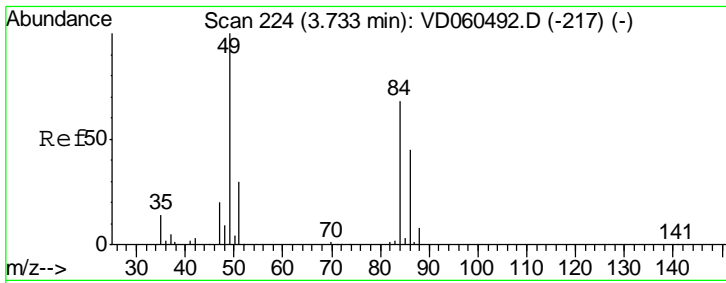
Tgt Ion	Resp	Lower	Upper
168	100		
99	45.8	35.6	53.4



#16
 Acetone
 Concen: 14.961 ug/l
 RT: 3.19 min Scan# 169
 Delta R.T. 0.01 min
 Lab File: VD060596.D
 Acq: 17 Dec 2018 13:41

Tgt Ion	Resp	Lower	Upper
43	100		
58	23.1	17.3	25.9

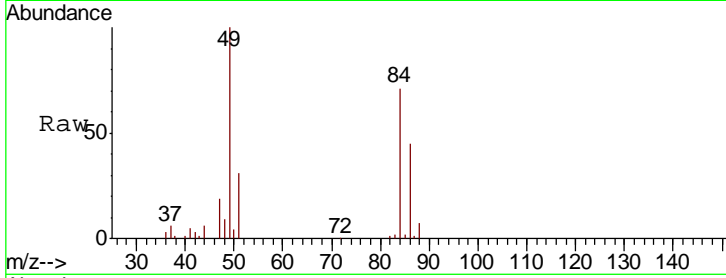




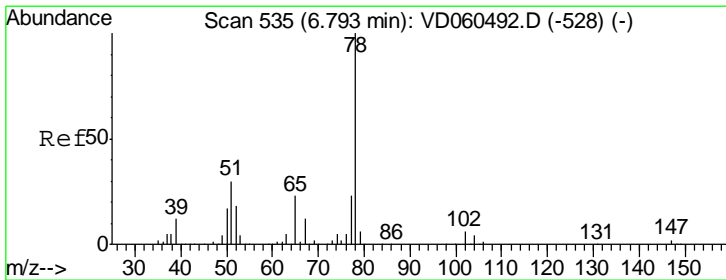
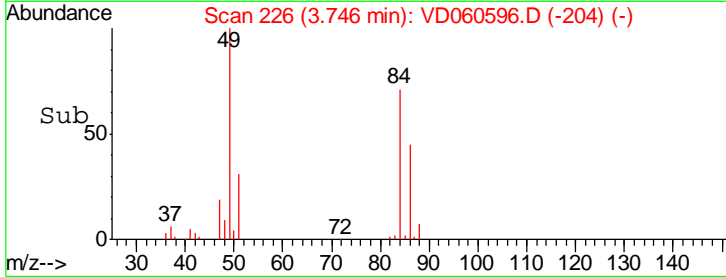
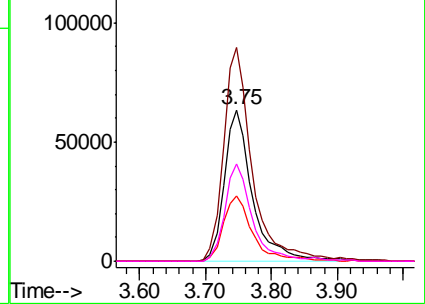
#20
 Methylene Chloride
 Concen: 9.819 ug/l
 RT: 3.75 min Scan# 226
 Delta R.T. 0.01 min
 Lab File: VD060596.D
 Acq: 17 Dec 2018 13:41

Instrument :
 MSVOA_D
 ClientSampled :
 SS-SOIL

Tgt Ion	Resp	Lower	Upper
84	189546		
49	141.0	117.2	175.8
51	43.3	35.3	52.9
86	63.9	53.2	79.8

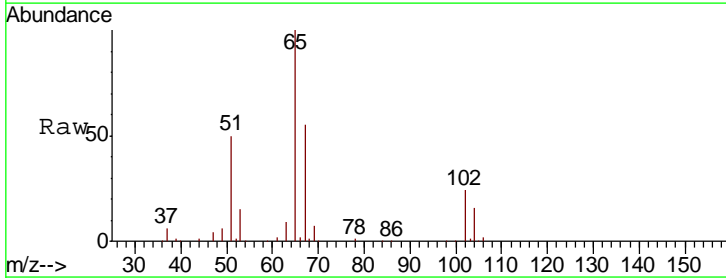


Abundance Ion 83.95 (83.65 to 84.65): VDC
 Ion 48.90 (48.60 to 49.60): VDC
 Ion 50.90 (50.60 to 51.60): VDC
 Ion 85.90 (85.60 to 86.60): VDC

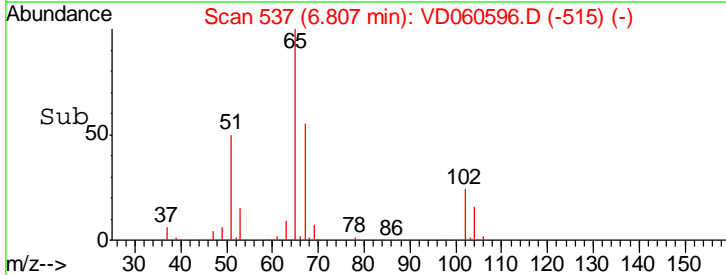
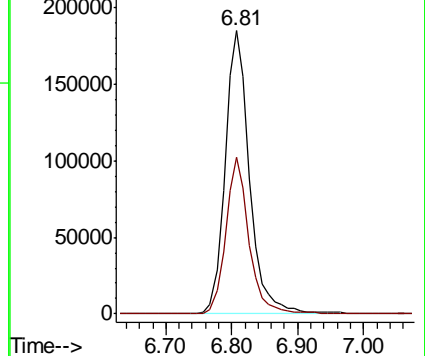


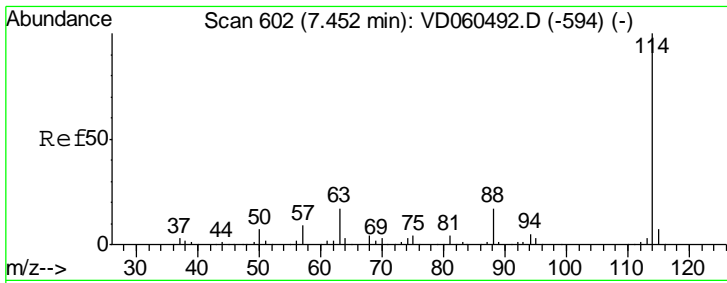
#33
 1,2-Dichloroethane-d4
 Concen: N.D. ug/l
 RT: 6.81 min Scan# 537
 Delta R.T. 0.01 min
 Lab File: VD060596.D
 Acq: 17 Dec 2018 13:41

Tgt Ion	Resp	Lower	Upper
65	475957		
67	55.1	0.0	106.8



Abundance Ion 64.95 (64.65 to 65.65): VDC
 Ion 66.90 (66.60 to 67.60): VDC



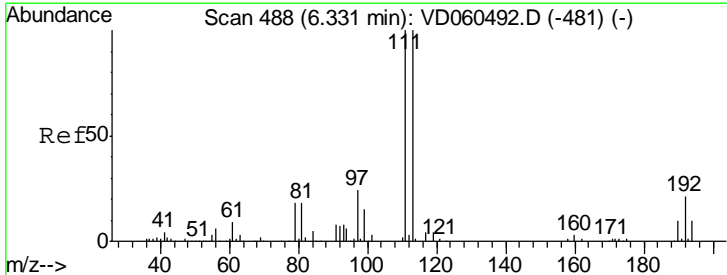
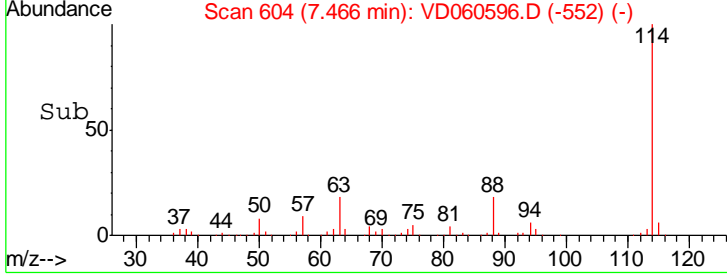
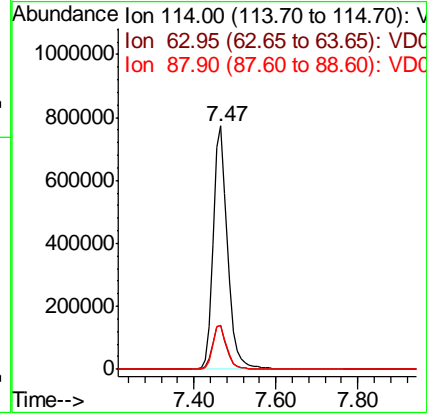
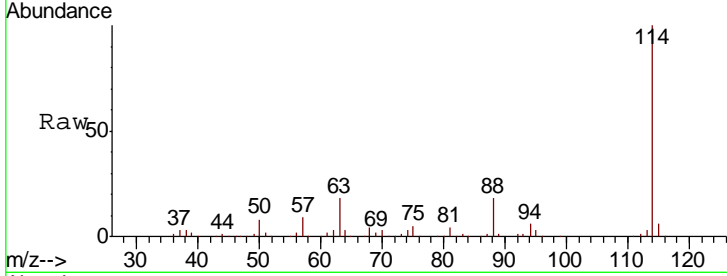


#34
 1,4-Difluorobenzene
 Concen: 50.000 ug/l
 RT: 7.47 min Scan# 604
 Delta R.T. 0.01 min
 Lab File: VD060596.D
 Acq: 17 Dec 2018 13:41

Instrument : MSVOA_D
 ClientSampled : SS-SOIL

Tot Ion:114 Resp: 1879466

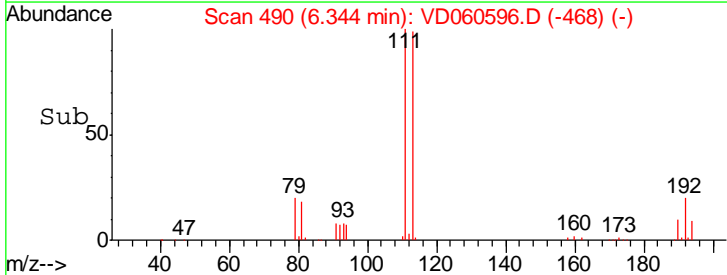
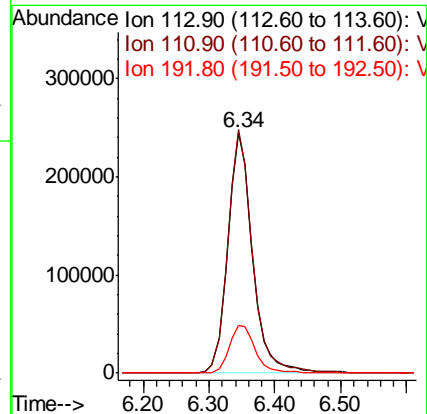
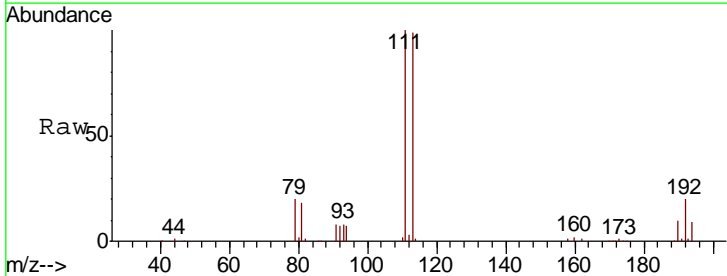
Ion	Ratio	Lower	Upper
114	100		
63	18.2	0.0	34.2
88	18.1	0.0	35.0

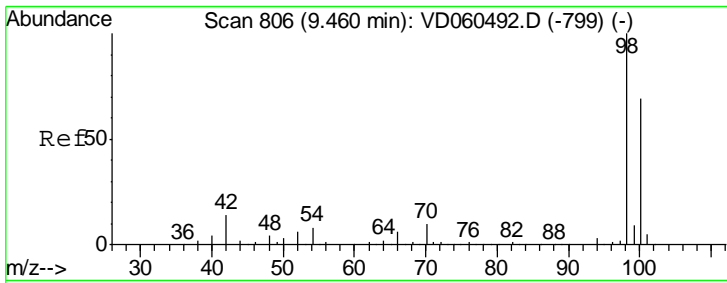


#35
 Dibromofluoromethane
 Concen: 50.000 ug/l
 RT: 6.34 min Scan# 490
 Delta R.T. 0.01 min
 Lab File: VD060596.D
 Acq: 17 Dec 2018 13:41

Tgt Ion:113 Resp: 642896

Ion	Ratio	Lower	Upper
113	100		
111	101.3	80.2	120.4
192	19.9	16.6	24.8

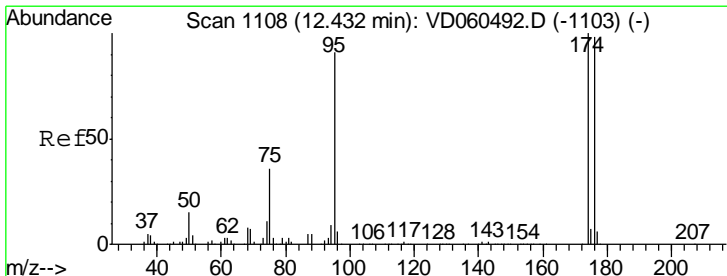
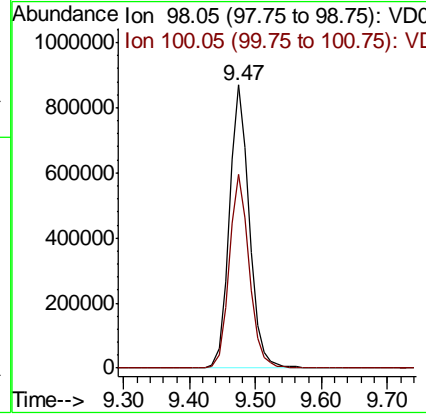
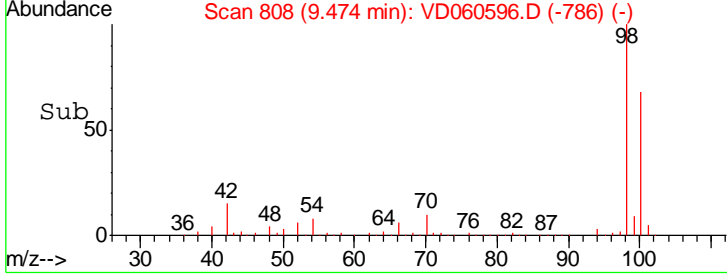
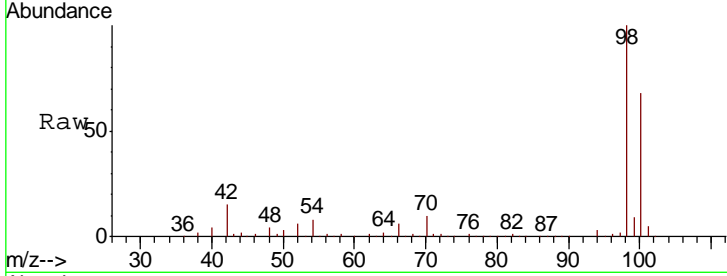




#50
 Toluene-d8
 Concen: N.D. ug/l
 RT: 9.47 min Scan# 808
 Delta R.T. 0.01 min
 Lab File: VD060596.D
 Acq: 17 Dec 2018 13:41

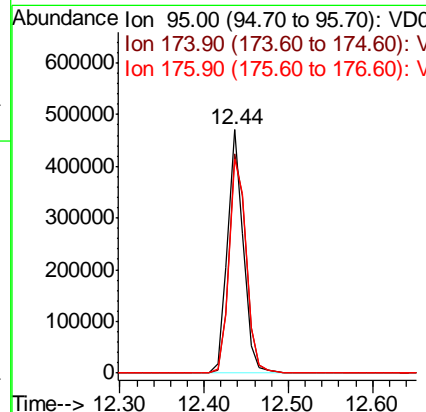
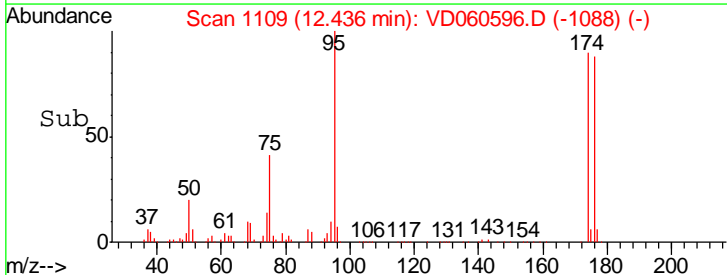
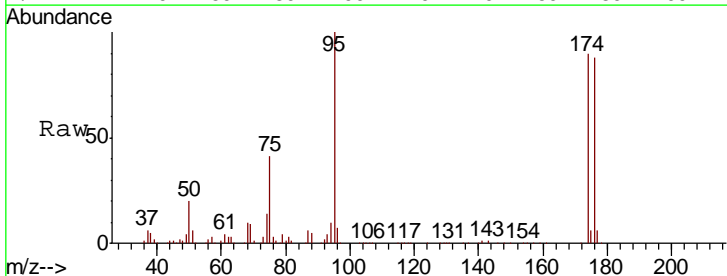
Instrument :
 MSVOA_D
ClientSampled :
 SS-SOIL

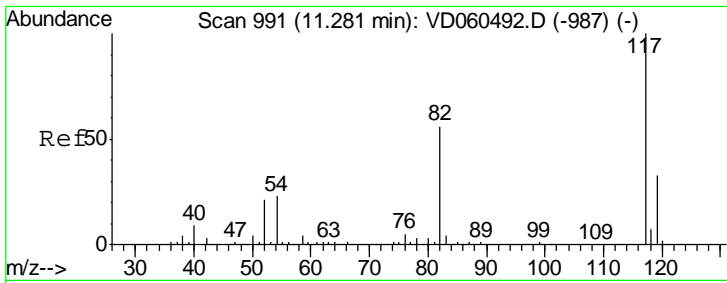
Tgt Ion: 98 Resp: 1845622
 Ion Ratio Lower Upper
 98 100
 100 68.4 55.7 83.5



#62
 4-Bromofluorobenzene
 Concen: N.D. ug/l
 RT: 12.44 min Scan# 1109
 Delta R.T. 0.00 min
 Lab File: VD060596.D
 Acq: 17 Dec 2018 13:41

Tgt Ion: 95 Resp: 615796
 Ion Ratio Lower Upper
 95 100
 174 89.9 0.0 219.4
 176 88.0 0.0 214.6



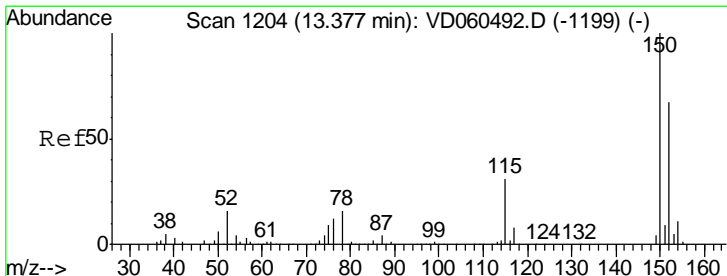
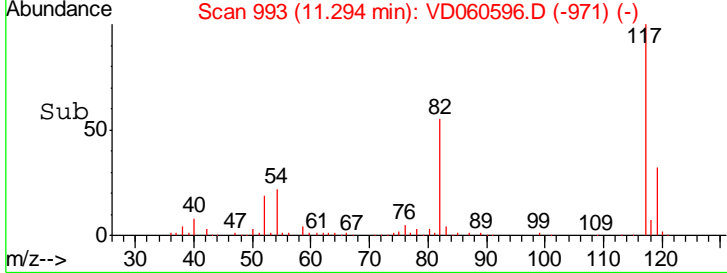
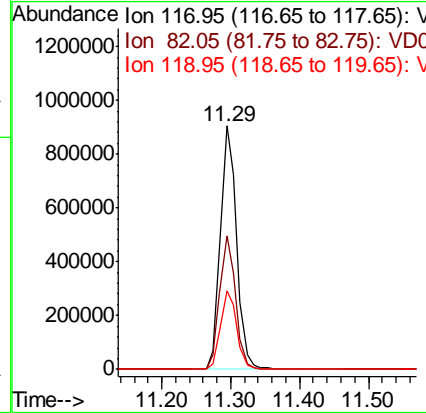
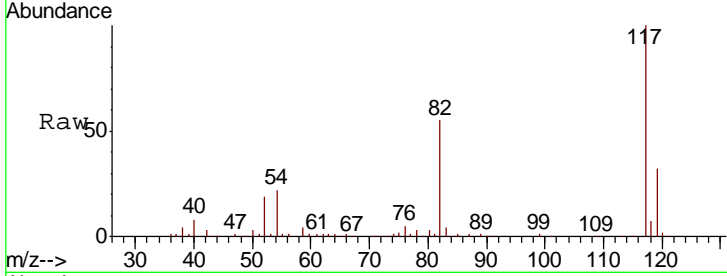


#63
 Chlorobenzene-d5
 Concen: 50.000 ug/l
 RT: 11.29 min Scan# 993
 Delta R.T. 0.01 min
 Lab File: VD060596.D
 Acq: 17 Dec 2018 13:41

Instrument :
 MSVOA_D
 ClientSampled :
 SS-SOIL

Tgt Ion:117 Resp: 1470637

Ion	Ratio	Lower	Upper
117	100		
82	54.9	45.2	67.8
119	32.3	26.1	39.1



#72
 1,4-Dichlorobenzene-d4
 Concen: 50.000 ug/l
 RT: 13.38 min Scan# 1205
 Delta R.T. 0.00 min
 Lab File: VD060596.D
 Acq: 17 Dec 2018 13:41

Tgt Ion:152 Resp: 677400

Ion	Ratio	Lower	Upper
152	100		
115	52.4	24.6	74.0
150	157.2	0.0	309.0

