

Data Path : Z:\voasrv\HPCHEM1\MSVOA\_D\Data\VD122023\  
 Data File : VD077990.D  
 Acq On : 20 Dec 2023 12:47  
 Operator : RP/MD  
 Sample : BLK  
 Misc : 5.04G/5.0ml/MSVOA\_D/SOIL/A  
 ALS Vial : 9 Sample Multiplier: 1

Instrument :  
 MSVOA\_D  
 ClientSampleId :  
 BLK

Quant Time: Dec 21 05:22:54 2023  
 Quant Method : Z:\voasrv\HPCHEM1\MSVOA\_D\Method\82D120823S.M  
 Quant Title : SW846 8260  
 QLast Update : Thu Dec 14 14:48:10 2023  
 Response via : Initial Calibration

Compound	R.T.	QIon	Response	Conc	Units	Dev(Min)
Internal Standards						
1) Pentafluorobenzene	7.881	168	185051	50.000	ug/l	0.00
34) 1,4-Difluorobenzene	8.781	114	333851	50.000	ug/l	0.00
63) Chlorobenzene-d5	11.581	117	325600	50.000	ug/l	# 0.00
72) 1,4-Dichlorobenzene-d4	13.522	152	149893	50.000	ug/l	0.00
System Monitoring Compounds						
33) 1,2-Dichloroethane-d4	8.234	65	86302	39.578	ug/l	0.00
Spiked Amount	50.000	Range	50 - 163	Recovery	=	79.160%
35) Dibromofluoromethane	7.810	113	101882	43.567	ug/l	0.00
Spiked Amount	50.000	Range	54 - 147	Recovery	=	87.140%
50) Toluene-d8	10.275	98	420172	44.861	ug/l	0.00
Spiked Amount	50.000	Range	58 - 134	Recovery	=	89.720%
62) 4-Bromofluorobenzene	12.575	95	125560	44.839	ug/l	0.00
Spiked Amount	50.000	Range	30 - 143	Recovery	=	89.680%

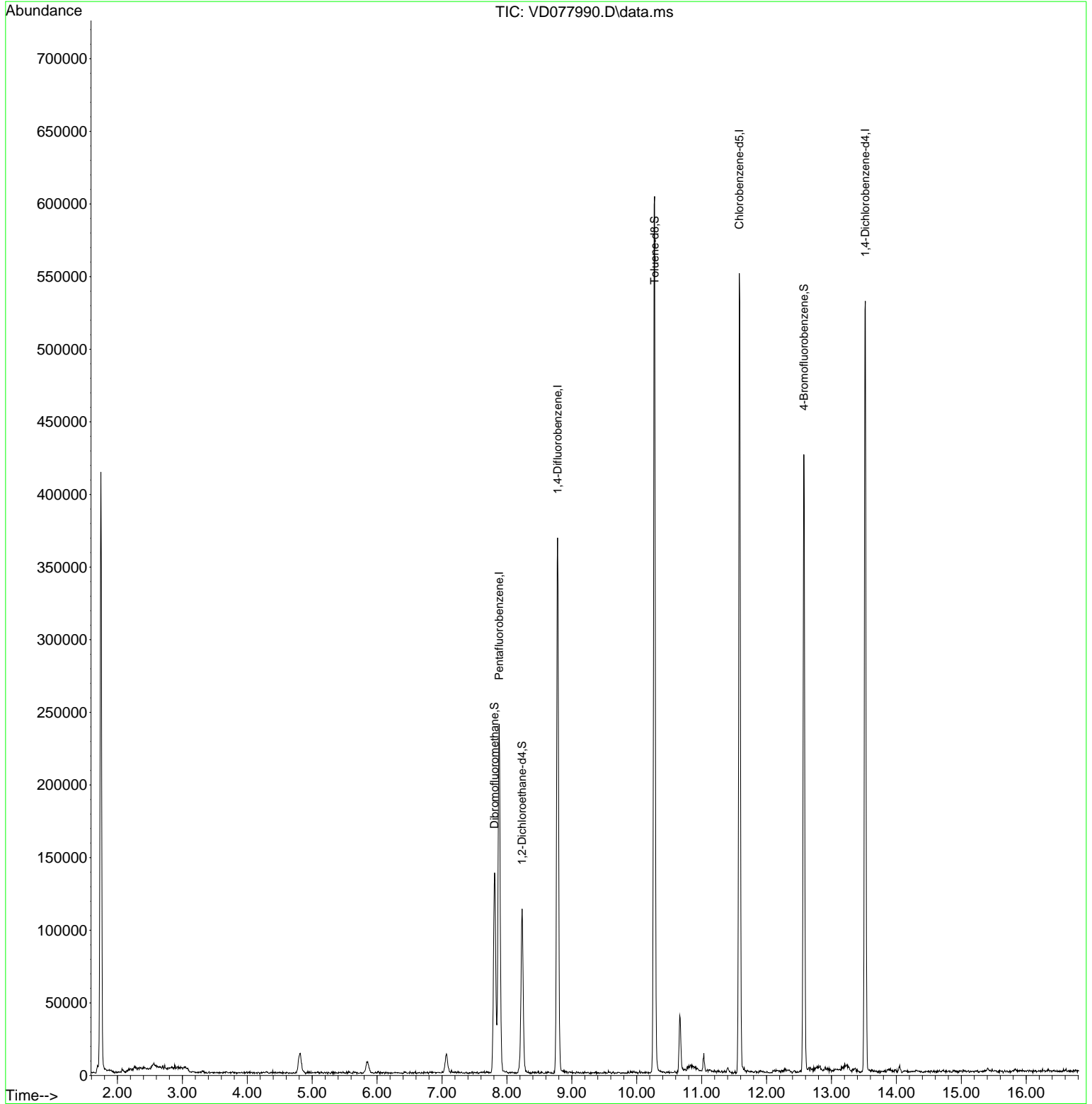
Target Compounds Qvalue

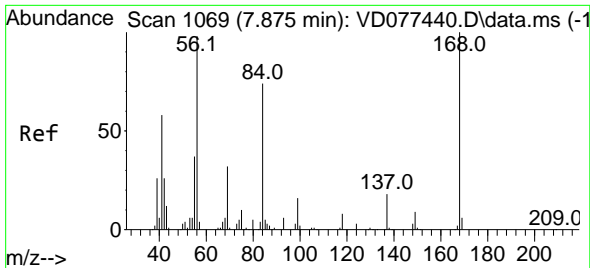
(#) = qualifier out of range (m) = manual integration (+) = signals summed

Data Path : Z:\voasrv\HPCHEM1\MSVOA\_D\Data\VD122023\  
 Data File : VD077990.D  
 Acq On : 20 Dec 2023 12:47  
 Operator : RP/MD  
 Sample : BLK  
 Misc : 5.04G/5.0ml/MSVOA\_D/SOIL/A  
 ALS Vial : 9 Sample Multiplier: 1

Instrument :  
 MSVOA\_D  
 ClientSampleId :  
 BLK

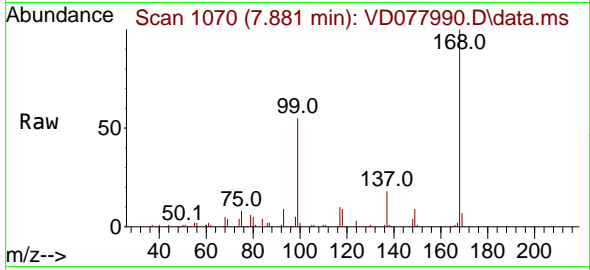
Quant Time: Dec 21 05:22:54 2023  
 Quant Method : Z:\voasrv\HPCHEM1\MSVOA\_D\Method\82D120823S.M  
 Quant Title : SW846 8260  
 QLast Update : Thu Dec 14 14:48:10 2023  
 Response via : Initial Calibration



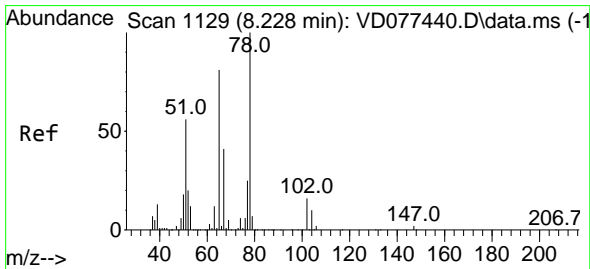
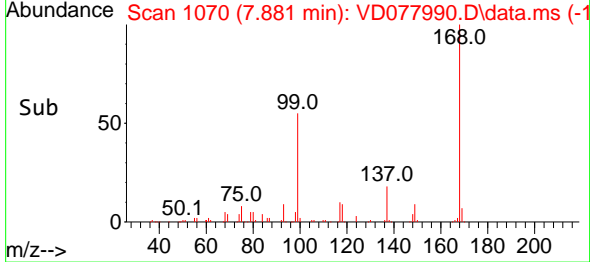
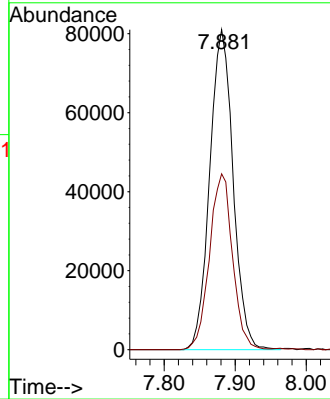


#1  
 Pentafluorobenzene  
 Concen: 50.000 ug/l  
 RT: 7.881 min Scan# 1107  
 Delta R.T. 0.006 min  
 Lab File: VD077990.D  
 Acq: 20 Dec 2023 12:47

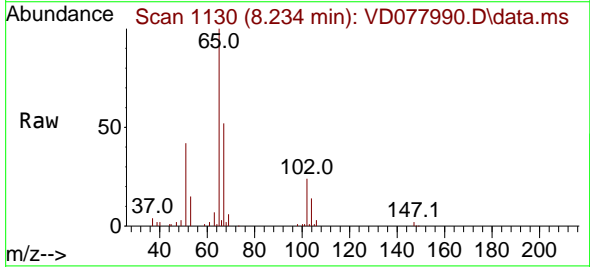
Instrument :  
 MSVOA\_D  
 ClientSampleId :  
 BLK



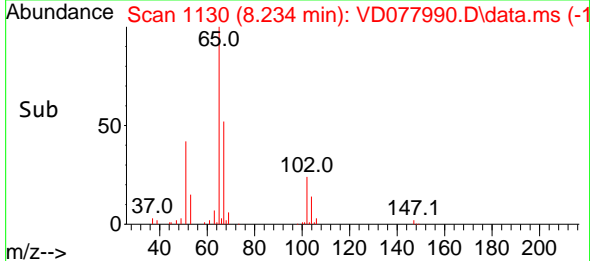
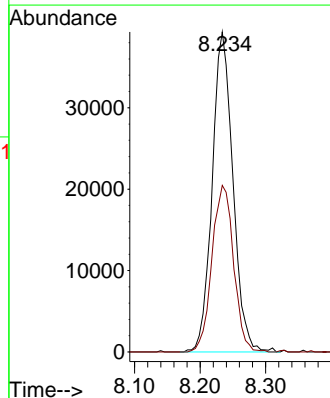
Tgt Ion:168 Resp: 185051  
 Ion Ratio Lower Upper  
 168 100  
 99 55.0 36.7 55.1

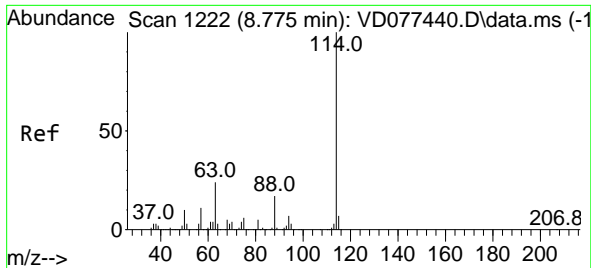


#33  
 1,2-Dichloroethane-d4  
 Concen: 39.578 ug/l  
 RT: 8.234 min Scan# 1130  
 Delta R.T. 0.006 min  
 Lab File: VD077990.D  
 Acq: 20 Dec 2023 12:47



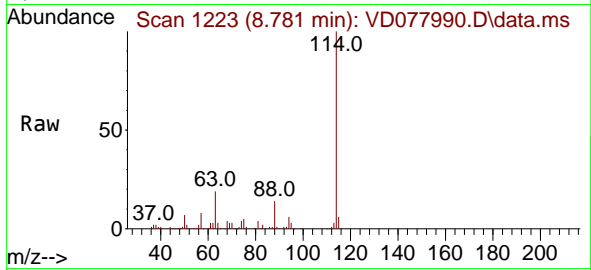
Tgt Ion: 65 Resp: 86302  
 Ion Ratio Lower Upper  
 65 100  
 67 54.3 0.0 115.0



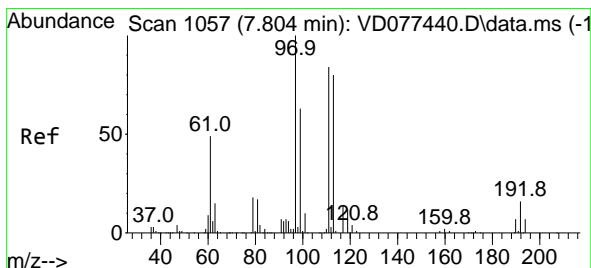
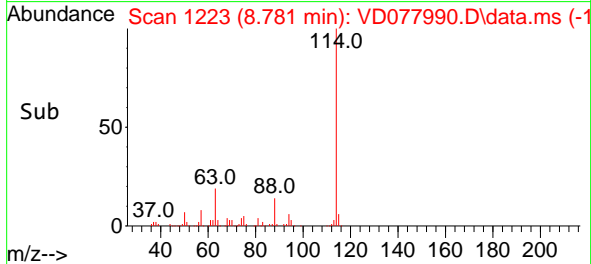
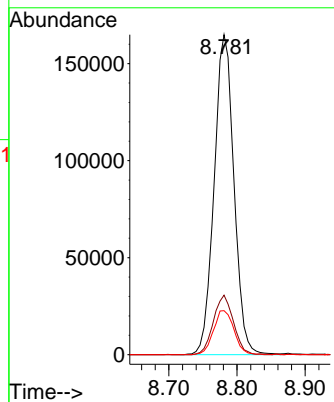


#34  
 1,4-Difluorobenzene  
 Concen: 50.000 ug/l  
 RT: 8.781 min Scan# 11  
 Delta R.T. 0.006 min  
 Lab File: VD077990.D  
 Acq: 20 Dec 2023 12:47

Instrument :  
 MSVOA\_D  
 ClientSampleId :  
 BLK

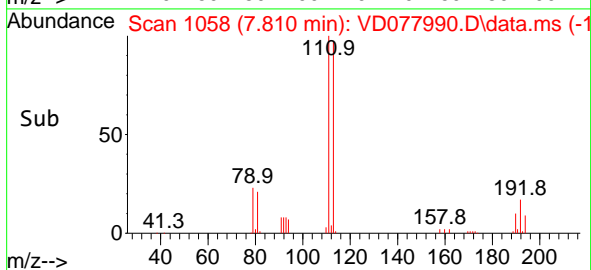
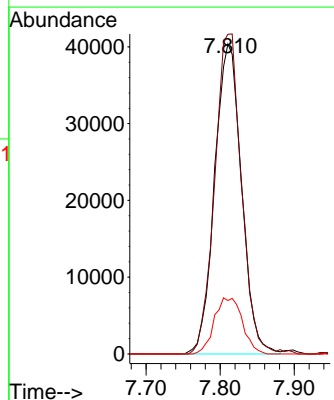
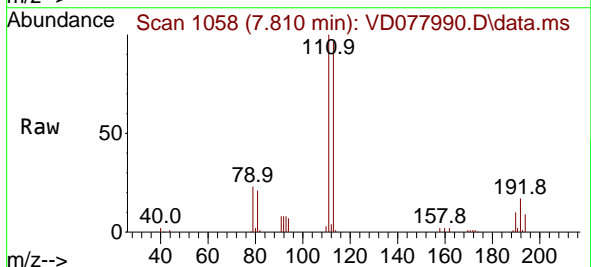


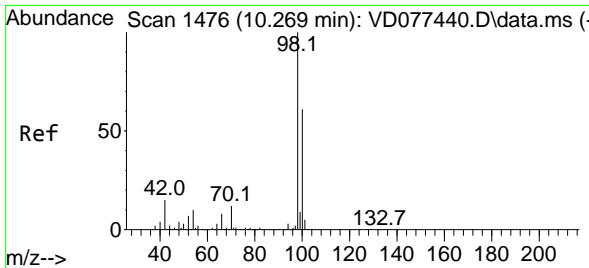
Tgt Ion:114 Resp: 333851  
 Ion Ratio Lower Upper  
 114 100  
 63 18.6 0.0 33.4  
 88 13.7 0.0 26.2



#35  
 Dibromofluoromethane  
 Concen: 43.567 ug/l  
 RT: 7.810 min Scan# 1058  
 Delta R.T. 0.006 min  
 Lab File: VD077990.D  
 Acq: 20 Dec 2023 12:47

Tgt Ion:113 Resp: 101882  
 Ion Ratio Lower Upper  
 113 100  
 111 102.7 84.7 127.1  
 192 18.8 16.8 25.2

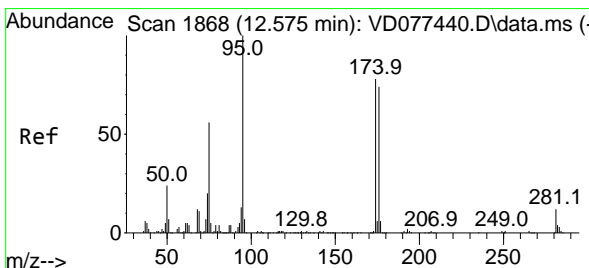
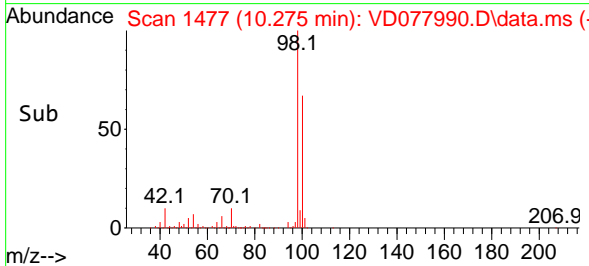
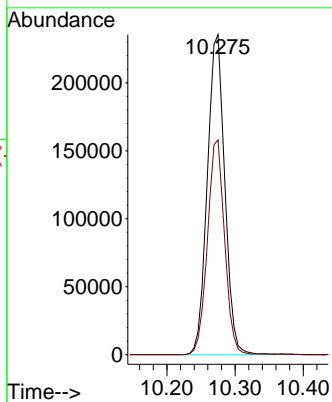
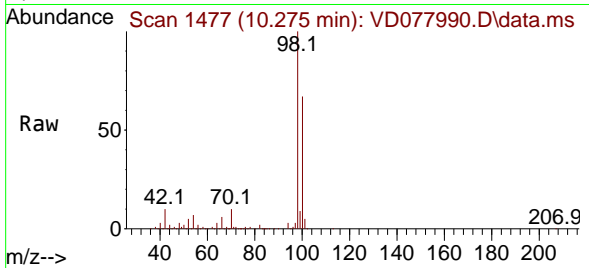




#50  
 Toluene-d8  
 Concen: 44.861 ug/l  
 RT: 10.275 min Scan# 1476  
 Delta R.T. 0.006 min  
 Lab File: VD077990.D  
 Acq: 20 Dec 2023 12:47

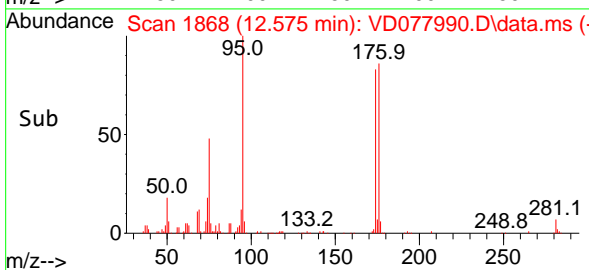
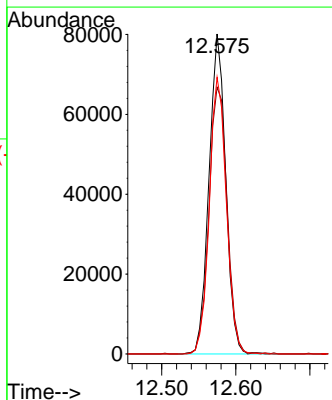
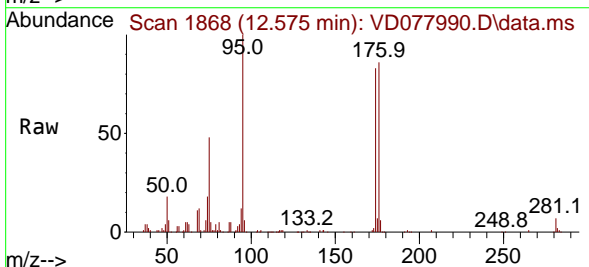
Instrument : MSVOA\_D  
 ClientSampleId : BLK

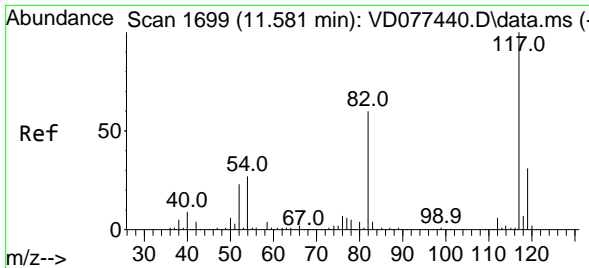
Tgt Ion: 98 Resp: 420172  
 Ion Ratio Lower Upper  
 98 100  
 100 65.9 50.3 75.5



#62  
 4-Bromofluorobenzene  
 Concen: 44.839 ug/l  
 RT: 12.575 min Scan# 1868  
 Delta R.T. -0.000 min  
 Lab File: VD077990.D  
 Acq: 20 Dec 2023 12:47

Tgt Ion: 95 Resp: 125560  
 Ion Ratio Lower Upper  
 95 100  
 174 90.6 0.0 201.8  
 176 88.0 0.0 191.8



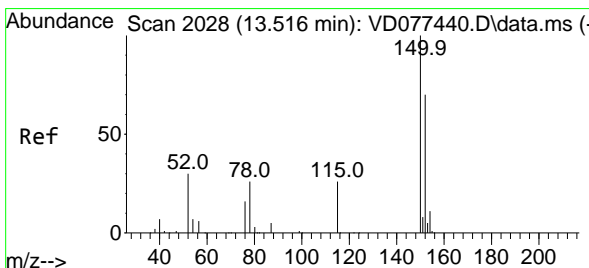
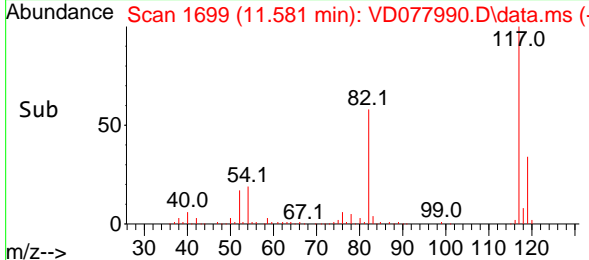
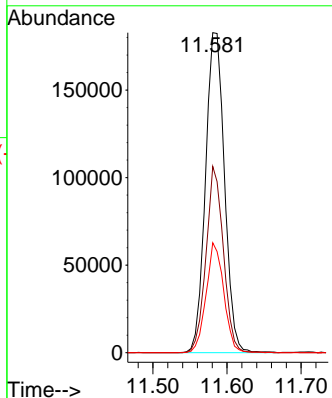
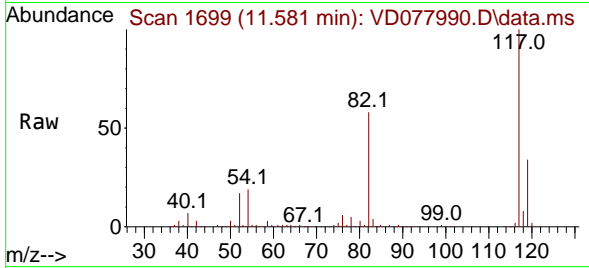


#63  
 Chlorobenzene-d5  
 Concen: 50.000 ug/l  
 RT: 11.581 min Scan# 11  
 Delta R.T. -0.000 min  
 Lab File: VD077990.D  
 Acq: 20 Dec 2023 12:47

Instrument :  
 MSVOA\_D  
 ClientSampleId :  
 BLK

Tgt Ion:117 Resp: 325600

Ion	Ratio	Lower	Upper
117	100		
82	58.2	38.3	57.5#
119	34.3	25.0	37.4



#72  
 1,4-Dichlorobenzene-d4  
 Concen: 50.000 ug/l  
 RT: 13.522 min Scan# 2029  
 Delta R.T. 0.006 min  
 Lab File: VD077990.D  
 Acq: 20 Dec 2023 12:47

Tgt Ion:152 Resp: 149893

Ion	Ratio	Lower	Upper
152	100		
115	54.6	27.1	81.3
150	154.7	0.0	353.6

