

Data Path : Z:\voasrv\HPCHEM1\MSVOA_D\Data\VD122123\
 Data File : VD078053.D
 Acq On : 22 Dec 2023 05:40
 Operator : RP/MD
 Sample : 05926-05
 Misc : 5.09G/5.0ml/MSVOA_D/SOIL/A
 ALS Vial : 39 Sample Multiplier: 1

Instrument :
 MSVOA_D
 ClientSampleId :

Quant Time: Dec 22 07:55:25 2023
 Quant Method : Z:\voasrv\HPCHEM1\MSVOA_D\Method\82D120823S.M
 Quant Title : SW846 8260
 QLast Update : Thu Dec 14 14:48:10 2023
 Response via : Initial Calibration

Compound	R.T.	QIon	Response	Conc	Units	Dev(Min)

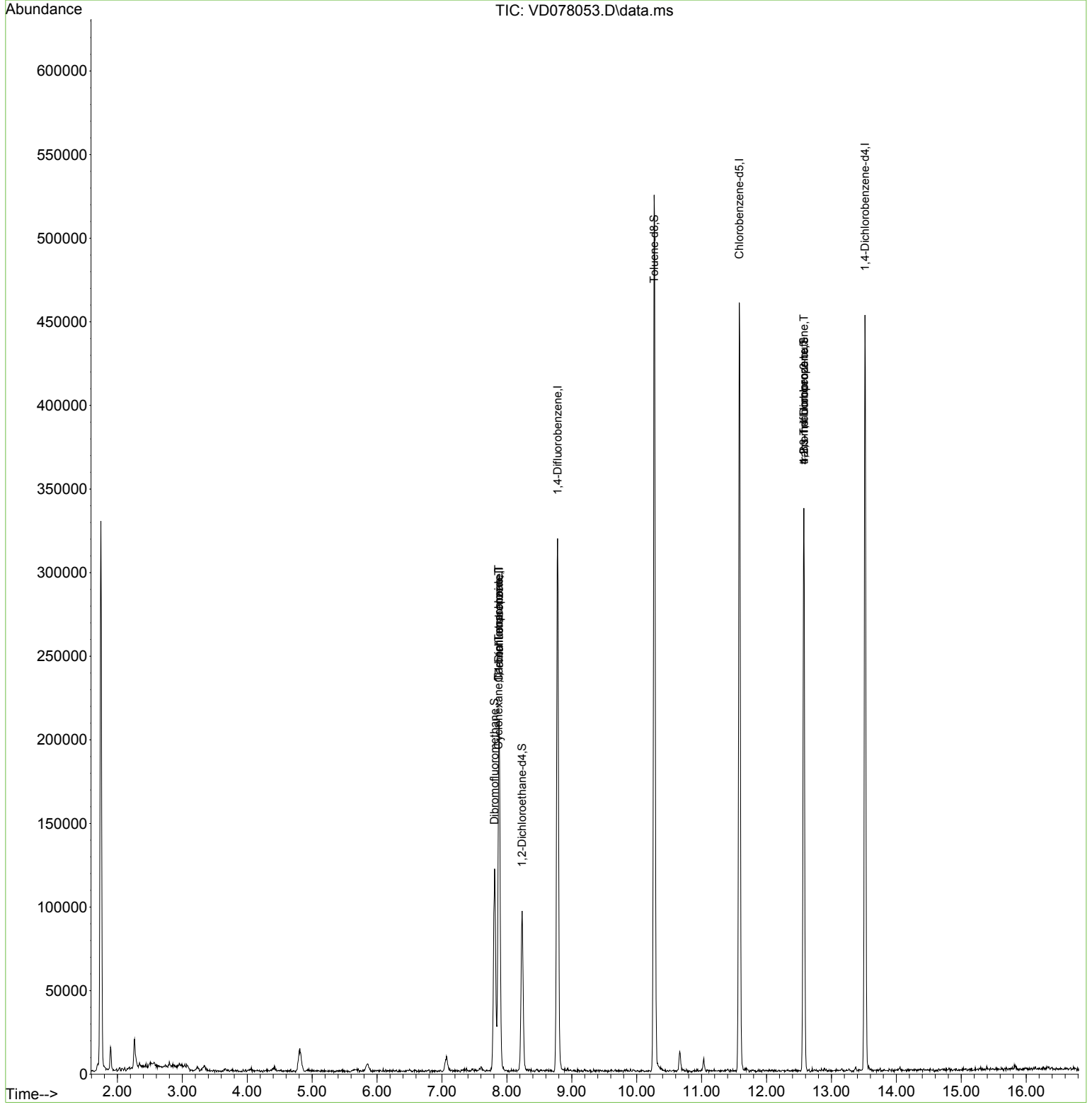
Internal Standards						
1) Pentafluorobenzene	7.881	168	161377	50.000	ug/l	# 0.00
34) 1,4-Difluorobenzene	8.781	114	285870	50.000	ug/l	0.00
63) Chlorobenzene-d5	11.581	117	271084	50.000	ug/l	0.00
72) 1,4-Dichlorobenzene-d4	13.516	152	117739	50.000	ug/l	0.00
System Monitoring Compounds						
33) 1,2-Dichloroethane-d4	8.234	65	72386	38.066	ug/l	0.00
Spiked Amount	50.000	Range	50 - 163	Recovery	=	76.140%
35) Dibromofluoromethane	7.811	113	84437	42.168	ug/l	0.00
Spiked Amount	50.000	Range	54 - 147	Recovery	=	84.340%
50) Toluene-d8	10.269	98	367202	45.786	ug/l	0.00
Spiked Amount	50.000	Range	58 - 134	Recovery	=	91.580%
62) 4-Bromofluorobenzene	12.575	95	102626	42.801	ug/l	0.00
Spiked Amount	50.000	Range	30 - 143	Recovery	=	85.600%
Target Compounds						
						Qvalue
11) Tert butyl alcohol	5.105	59	66	Below Cal	#	73
16) Acetone	4.028	43	1341	Below Cal	#	65
20) Methylene Chloride	4.811	84	9749	Below Cal	#	69
25) 2-Butanone	7.093	43	479	Below Cal	#	37
31) Cyclohexane	7.869	56	4017	1.188	ug/l	# 74
36) 1,1-Dichloropropene	7.875	75	13767	4.298	ug/l	# 44
38) Carbon Tetrachloride	7.875	117	16727	5.238	ug/l	# 17
65) Chlorobenzene	11.587	112	61	Below Cal	#	1
76) 1,2,3-Trichloropropane	12.575	75	54860	53.649	ug/l	# 100
81) trans-1,4-Dichloro-2-b...	12.575	75	54860	108.697	ug/l	# 17
92) 1,2-Dibromo-3-Chloropr...	14.516	75	62	Below Cal	#	1

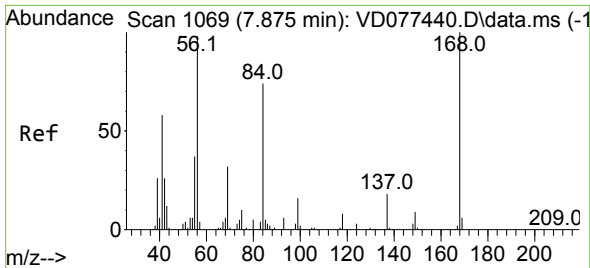
(#) = qualifier out of range (m) = manual integration (+) = signals summed

Data Path : Z:\voasrv\HPCHEM1\MSVOA_D\Data\VD122123\
 Data File : VD078053.D
 Acq On : 22 Dec 2023 05:40
 Operator : RP/MD
 Sample : 05926-05
 Misc : 5.09G/5.0ml/MSVOA_D/SOIL/A
 ALS Vial : 39 Sample Multiplier: 1

Instrument :
 MSVOA_D
 ClientSampleId :

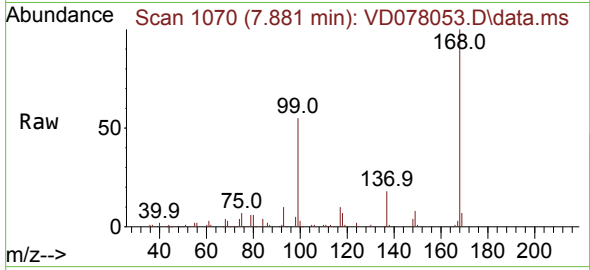
Quant Time: Dec 22 07:55:25 2023
 Quant Method : Z:\voasrv\HPCHEM1\MSVOA_D\Method\82D120823S.M
 Quant Title : SW846 8260
 QLast Update : Thu Dec 14 14:48:10 2023
 Response via : Initial Calibration



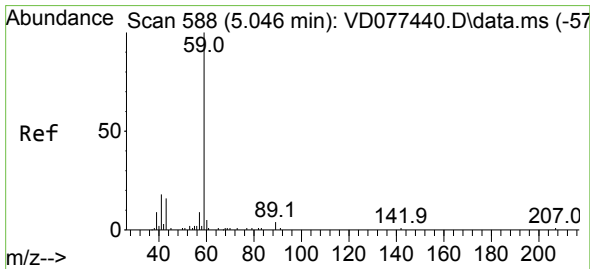
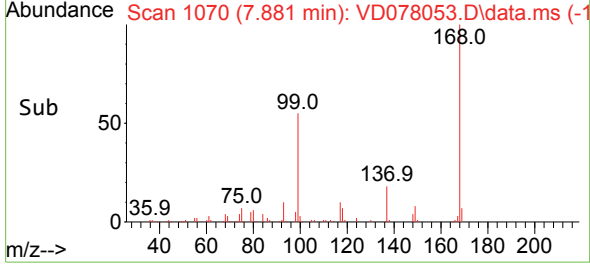
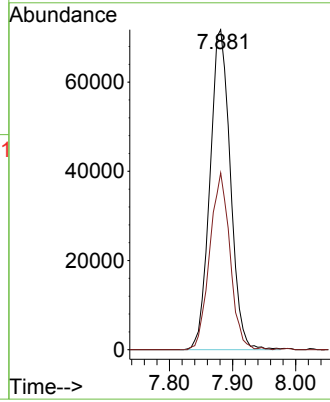


#1
 Pentafluorobenzene
 Concen: 50.000 ug/l
 RT: 7.881 min Scan# 1069
 Delta R.T. 0.006 min
 Lab File: VD078053.D
 Acq: 22 Dec 2023 05:40

Instrument :
 MSVOA_D
 ClientSampleId :

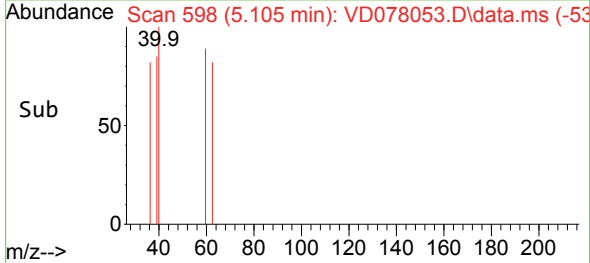
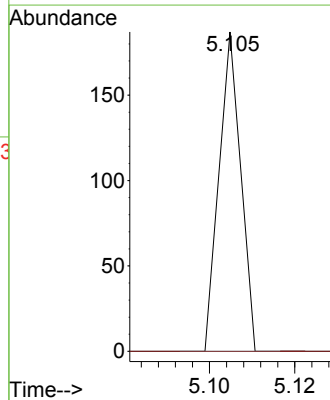
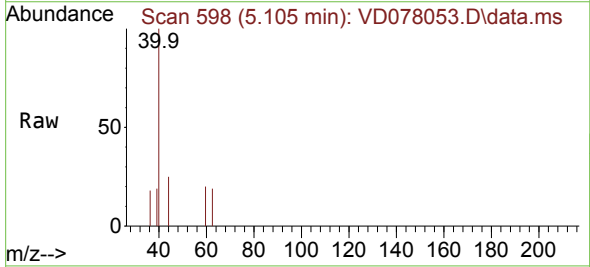


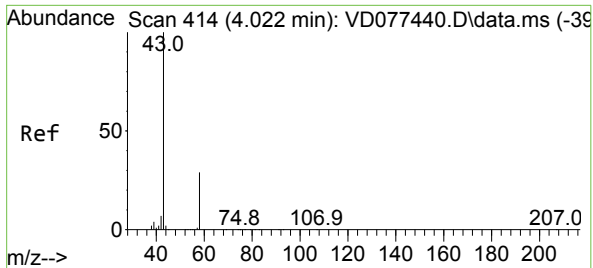
Tgt Ion:168 Resp: 161377
 Ion Ratio Lower Upper
 168 100
 99 55.2 36.7 55.1#



#11
 Tert butyl alcohol
 Concen: Below Cal
 RT: 5.105 min Scan# 598
 Delta R.T. 0.059 min
 Lab File: VD078053.D
 Acq: 22 Dec 2023 05:40

Tgt Ion: 59 Resp: 66
 Ion Ratio Lower Upper
 59 100
 57 0.0 7.8 11.8#

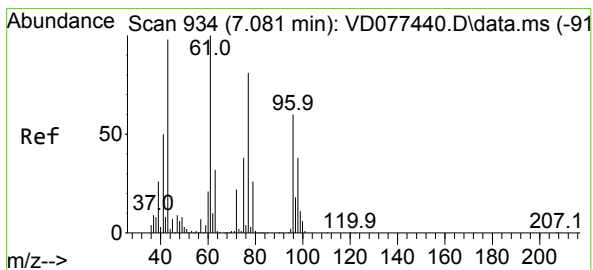
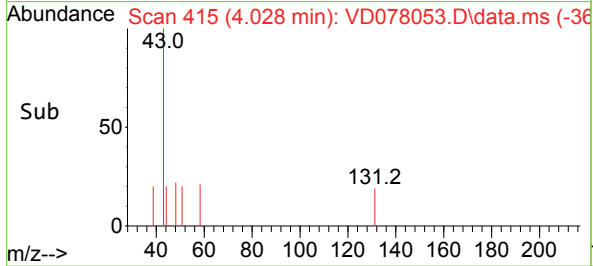
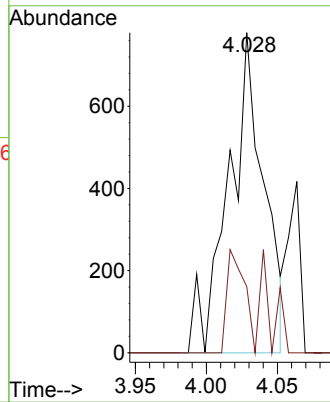
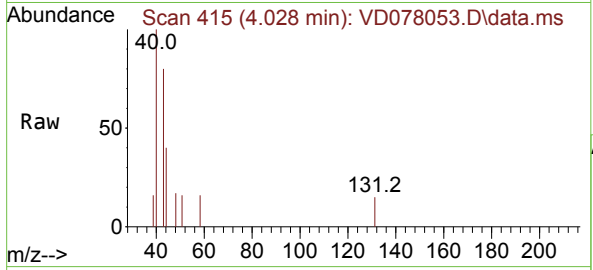




#16
 Acetone
 Concen: Below Cal
 RT: 4.028 min Scan# 414
 Delta R.T. 0.006 min
 Lab File: VD078053.D
 Acq: 22 Dec 2023 05:40

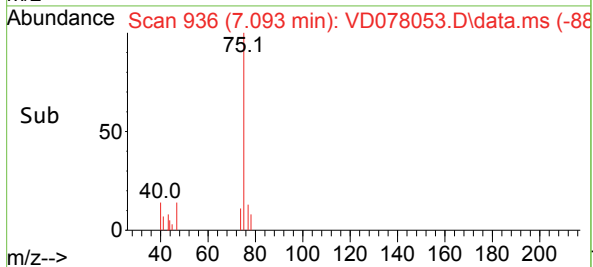
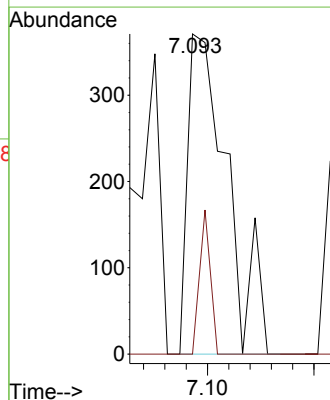
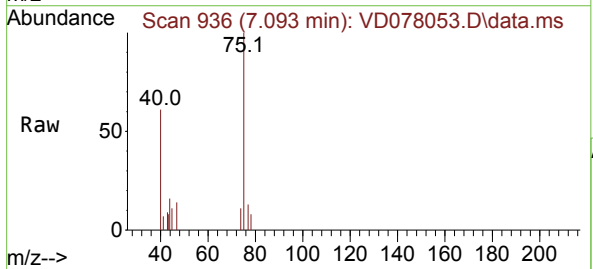
Instrument : MSVOA_D
 ClientSampleId :

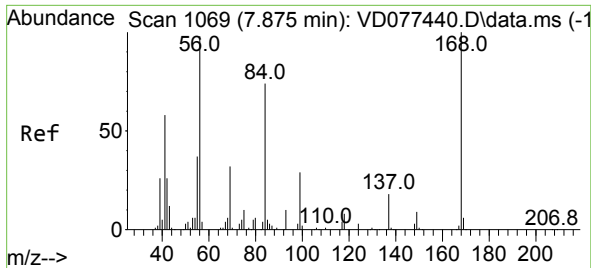
Tgt Ion: 43 Resp: 1341
 Ion Ratio Lower Upper
 43 100
 58 20.7 34.7 52.1#



#25
 2-Butanone
 Concen: Below Cal
 RT: 7.093 min Scan# 936
 Delta R.T. 0.012 min
 Lab File: VD078053.D
 Acq: 22 Dec 2023 05:40

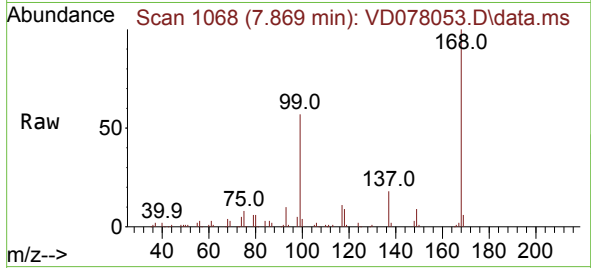
Tgt Ion: 43 Resp: 479
 Ion Ratio Lower Upper
 43 100
 72 0.0 30.7 46.1#



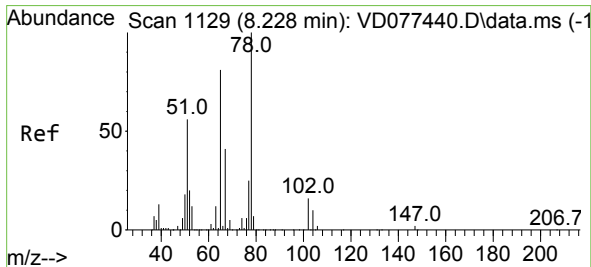
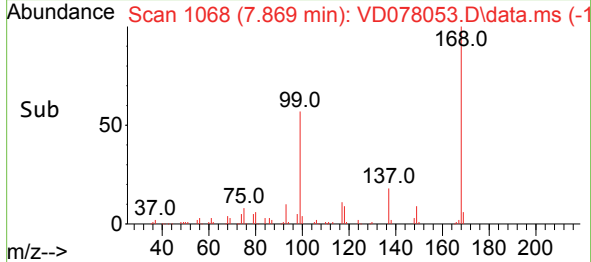
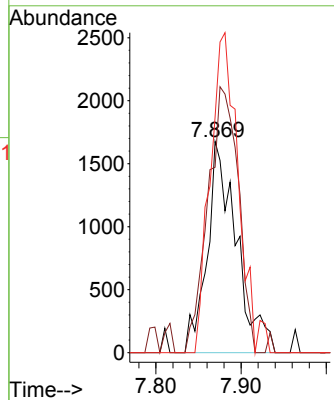


#31
 Cyclohexane
 Concen: 1.188 ug/l
 RT: 7.869 min Scan# 1100
 Delta R.T. -0.006 min
 Lab File: VD078053.D
 Acq: 22 Dec 2023 05:40

Instrument :
 MSVOA_D
 ClientSampleId :

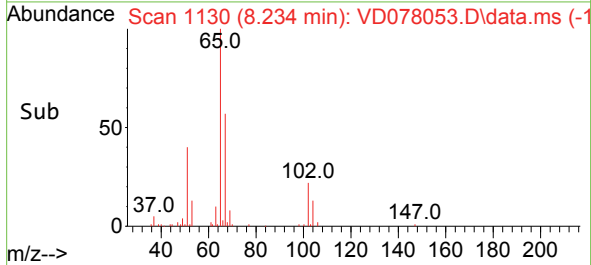
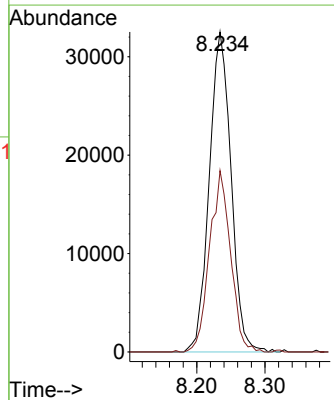
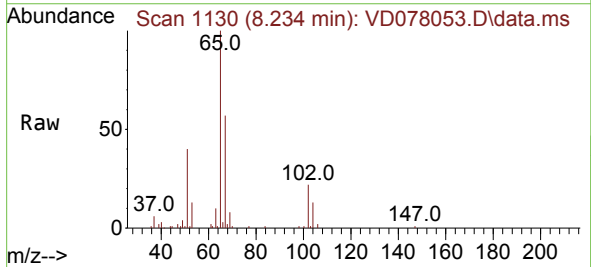


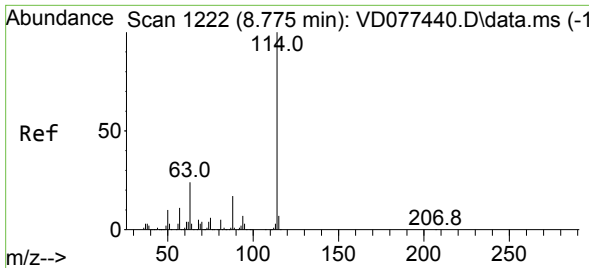
Tgt Ion: 56 Resp: 4017
 Ion Ratio Lower Upper
 56 100
 69 87.8 28.6 43.0#
 84 111.5 84.8 127.2



#33
 1,2-Dichloroethane-d4
 Concen: 38.066 ug/l
 RT: 8.234 min Scan# 1130
 Delta R.T. 0.006 min
 Lab File: VD078053.D
 Acq: 22 Dec 2023 05:40

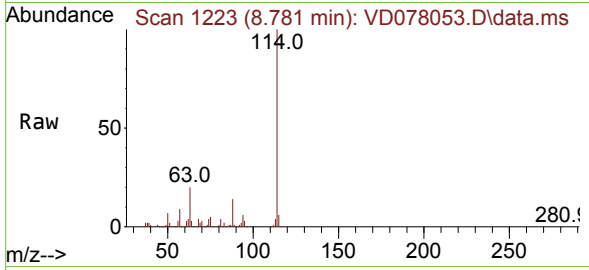
Tgt Ion: 65 Resp: 72386
 Ion Ratio Lower Upper
 65 100
 67 54.6 0.0 115.0





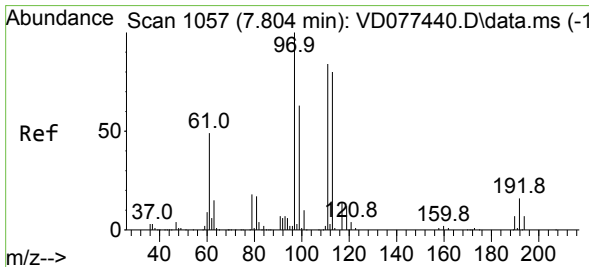
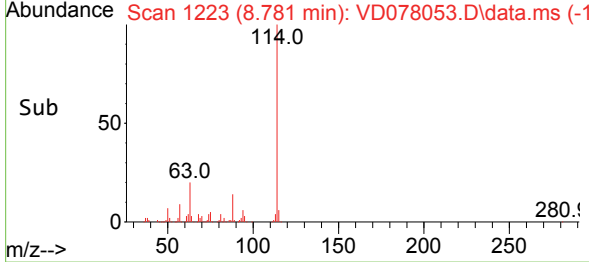
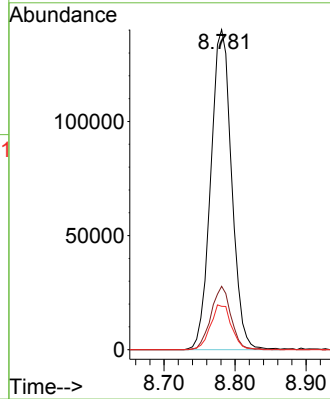
#34
 1,4-Difluorobenzene
 Concen: 50.000 ug/l
 RT: 8.781 min Scan# 11
 Delta R.T. 0.006 min
 Lab File: VD078053.D
 Acq: 22 Dec 2023 05:40

Instrument :
 MSVOA_D
 ClientSampleId :



Tgt Ion:114 Resp: 285870

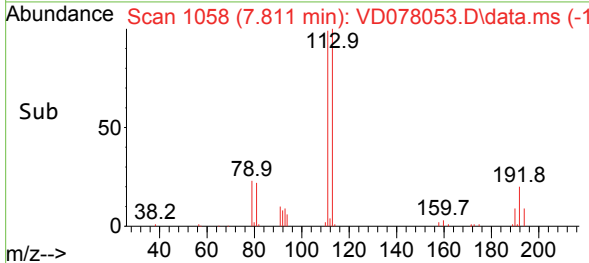
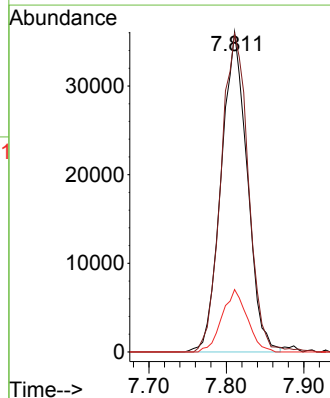
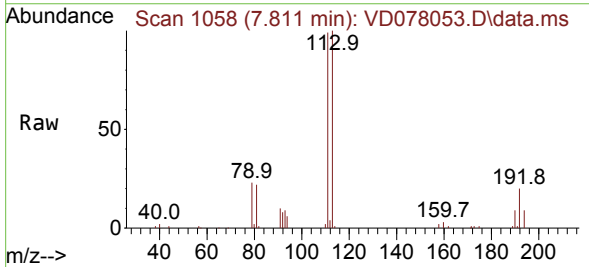
Ion	Ratio	Lower	Upper
114	100		
63	19.8	0.0	33.4
88	13.5	0.0	26.2

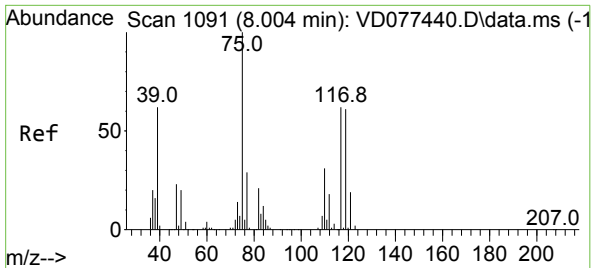


#35
 Dibromofluoromethane
 Concen: 42.168 ug/l
 RT: 7.811 min Scan# 1058
 Delta R.T. 0.007 min
 Lab File: VD078053.D
 Acq: 22 Dec 2023 05:40

Tgt Ion:113 Resp: 84437

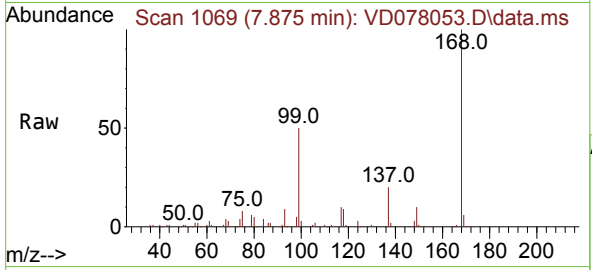
Ion	Ratio	Lower	Upper
113	100		
111	104.4	84.7	127.1
192	18.8	16.8	25.2





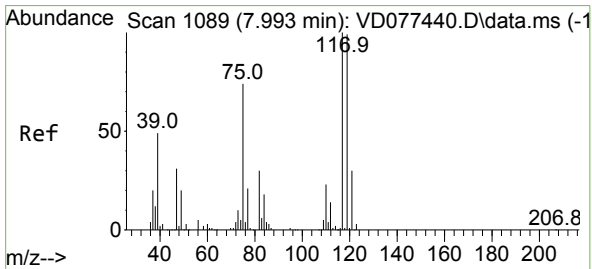
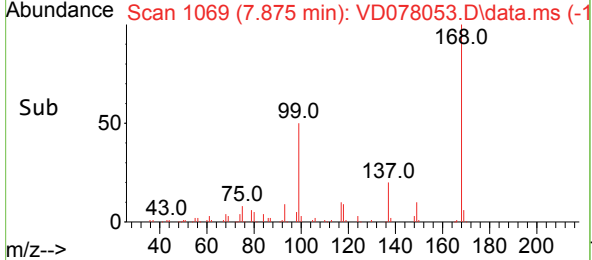
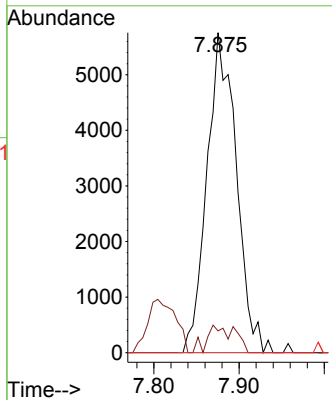
#36
 1,1-Dichloropropene
 Concen: 4.298 ug/l
 RT: 7.875 min Scan# 1069
 Delta R.T. -0.129 min
 Lab File: VD078053.D
 Acq: 22 Dec 2023 05:40

Instrument : MSVOA_D
 ClientSampleId :

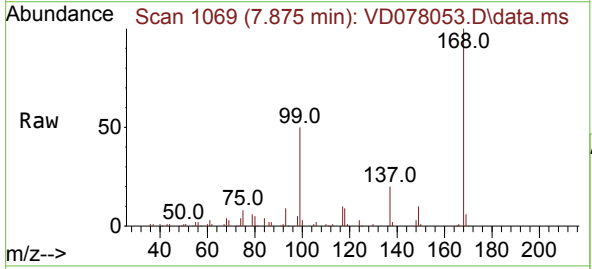


Tgt Ion: 75 Resp: 13767

Ion	Ratio	Lower	Upper
75	100		
110	5.5	19.9	59.6#
77	0.0	24.7	37.1#

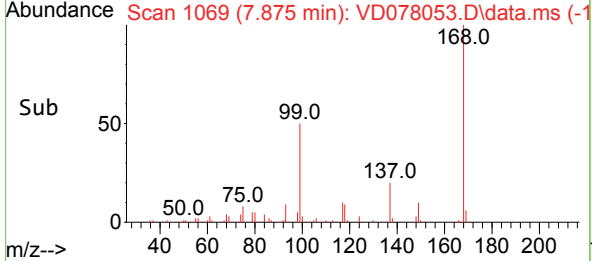
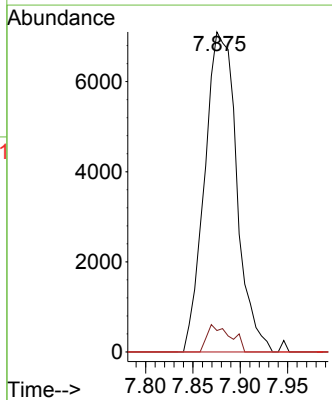


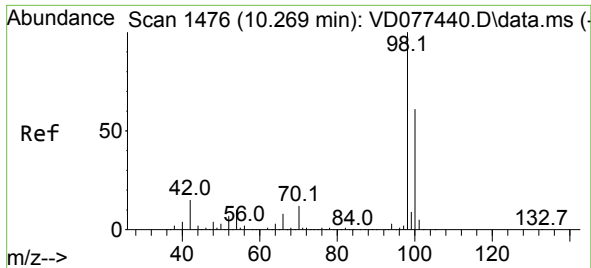
#38
 Carbon Tetrachloride
 Concen: 5.238 ug/l
 RT: 7.875 min Scan# 1069
 Delta R.T. -0.118 min
 Lab File: VD078053.D
 Acq: 22 Dec 2023 05:40



Tgt Ion: 117 Resp: 16727

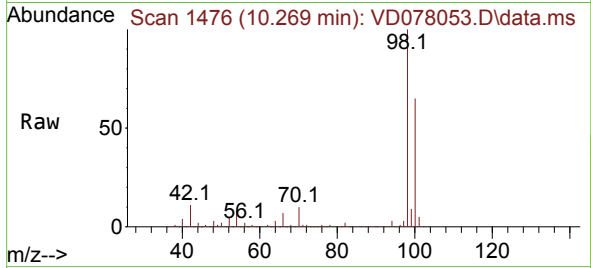
Ion	Ratio	Lower	Upper
117	100		
119	6.7	78.0	117.0#
121	0.0	24.2	36.2#



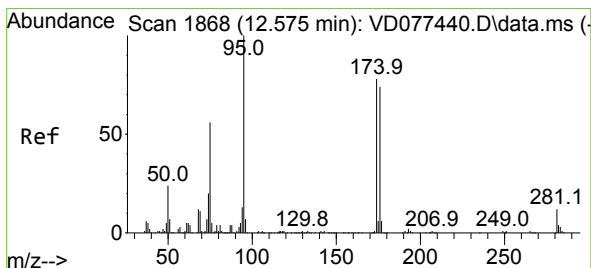
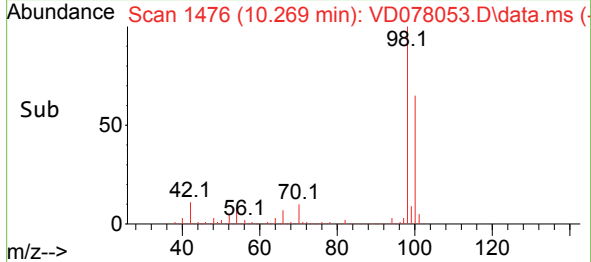
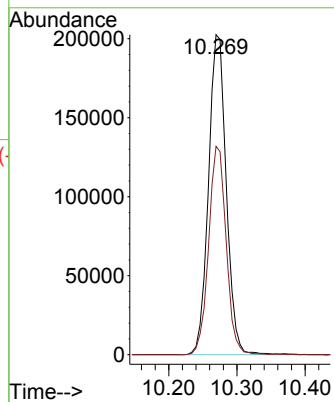


#50
 Toluene-d8
 Concen: 45.786 ug/l
 RT: 10.269 min Scan# 1476
 Delta R.T. 0.000 min
 Lab File: VD078053.D
 Acq: 22 Dec 2023 05:40

Instrument :
 MSVOA_D
 ClientSampleId :

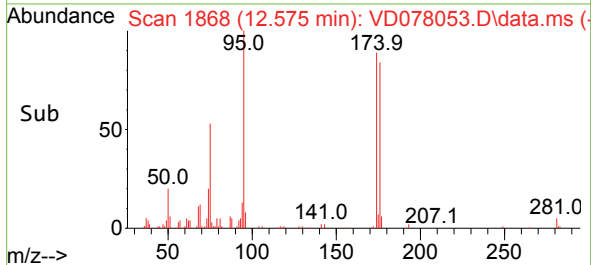
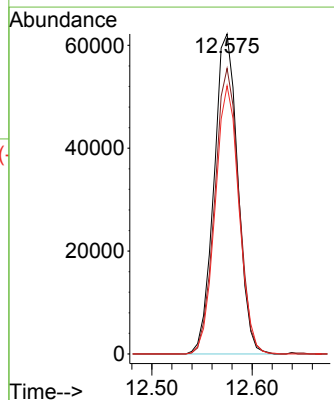
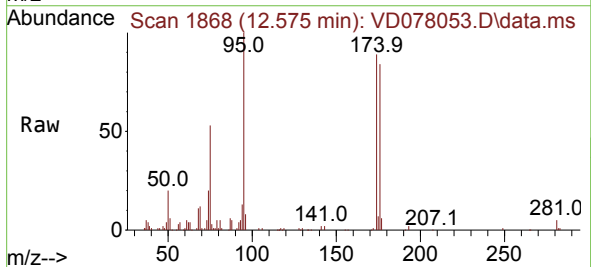


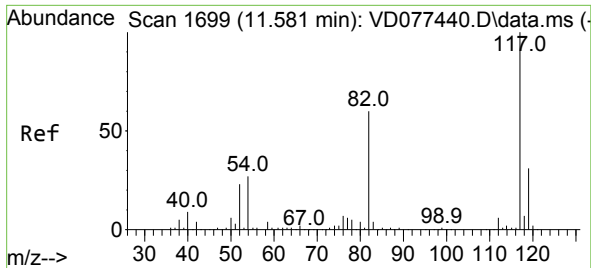
Tgt Ion: 98 Resp: 367202
 Ion Ratio Lower Upper
 98 100
 100 64.3 50.3 75.5



#62
 4-Bromofluorobenzene
 Concen: 42.801 ug/l
 RT: 12.575 min Scan# 1868
 Delta R.T. 0.000 min
 Lab File: VD078053.D
 Acq: 22 Dec 2023 05:40

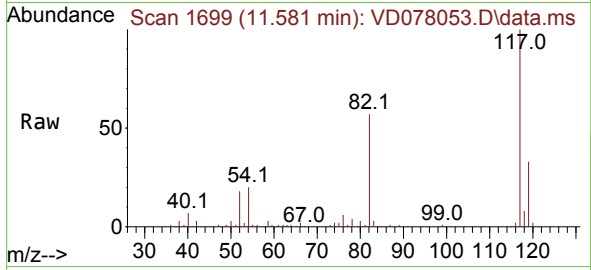
Tgt Ion: 95 Resp: 102626
 Ion Ratio Lower Upper
 95 100
 174 90.1 0.0 201.8
 176 84.0 0.0 191.8





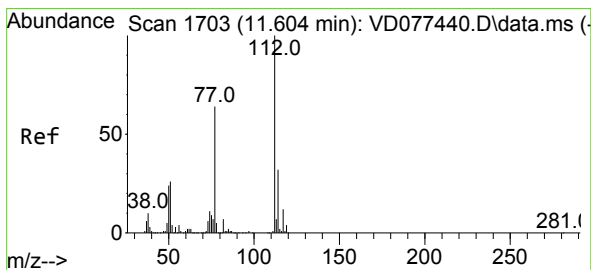
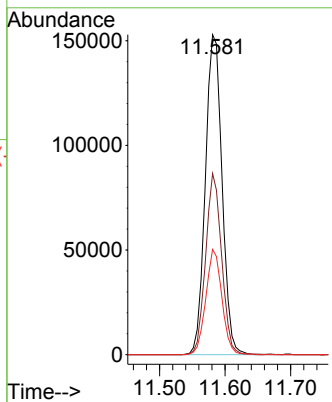
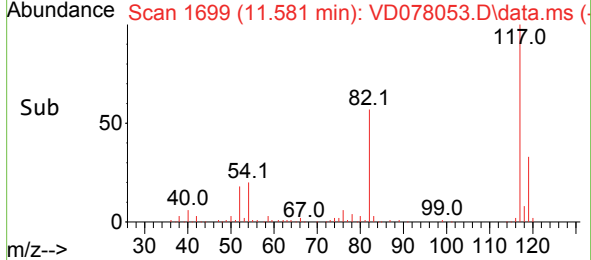
#63
 Chlorobenzene-d5
 Concen: 50.000 ug/l
 RT: 11.581 min Scan# 1170
 Delta R.T. -0.000 min
 Lab File: VD078053.D
 Acq: 22 Dec 2023 05:40

Instrument : MSVOA_D
 ClientSampleId :

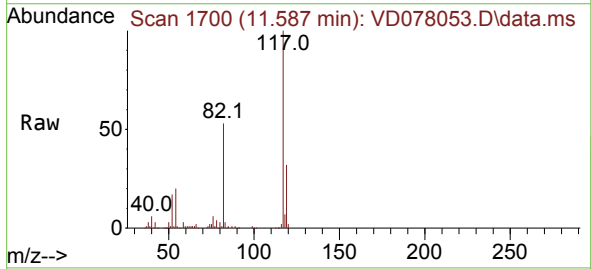


Tgt Ion:117 Resp: 271084

Ion	Ratio	Lower	Upper
117	100		
82	56.7	38.3	57.5
119	32.9	25.0	37.4

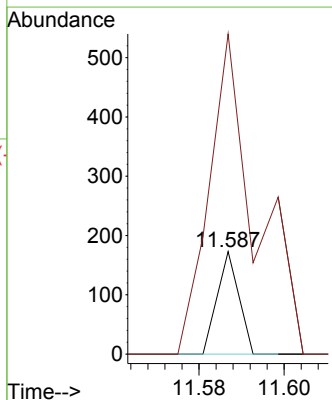
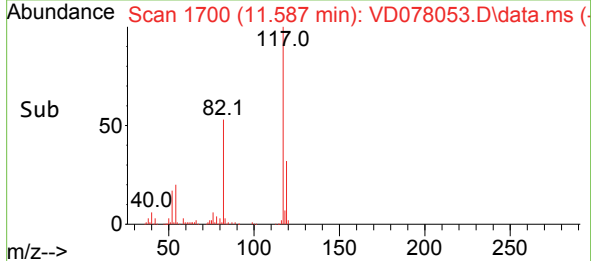


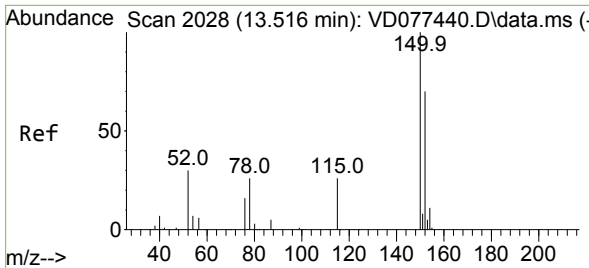
#65
 Chlorobenzene
 Concen: Below Cal
 RT: 11.587 min Scan# 1700
 Delta R.T. -0.017 min
 Lab File: VD078053.D
 Acq: 22 Dec 2023 05:40



Tgt Ion:112 Resp: 61

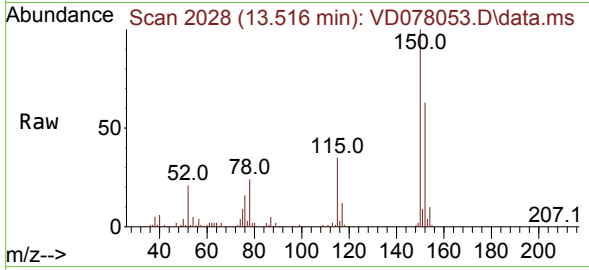
Ion	Ratio	Lower	Upper
112	100		
114	312.1	25.1	37.7#



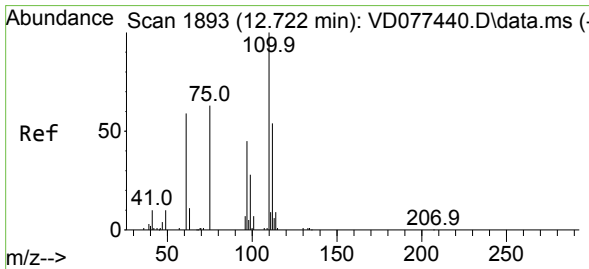
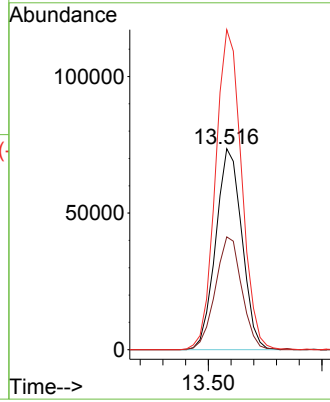
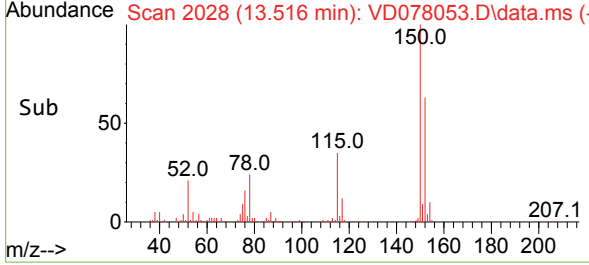


#72
 1,4-Dichlorobenzene-d4
 Concen: 50.000 ug/l
 RT: 13.516 min Scan# 20
 Delta R.T. 0.000 min
 Lab File: VD078053.D
 Acq: 22 Dec 2023 05:40

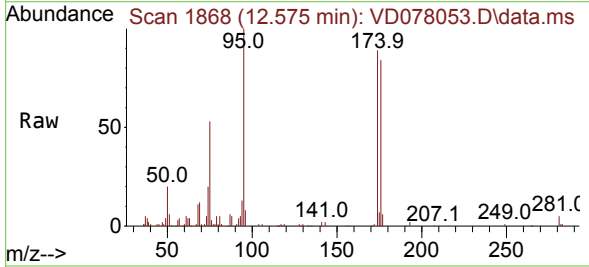
Instrument :
 MSVOA_D
 ClientSampleId :



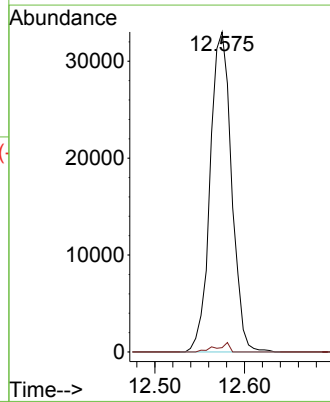
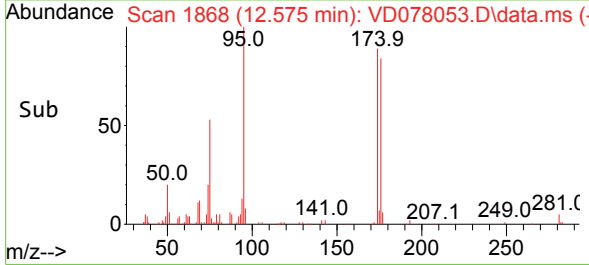
Tgt Ion:152 Resp: 117739
 Ion Ratio Lower Upper
 152 100
 115 56.8 27.1 81.3
 150 158.9 0.0 353.6

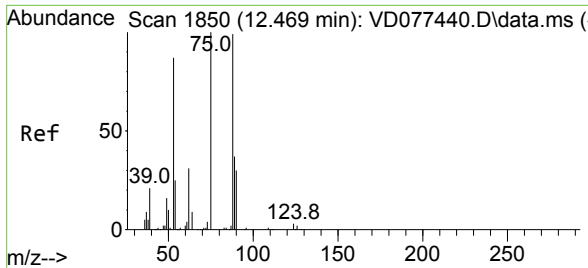


#76
 1,2,3-Trichloropropane
 Concen: 53.649 ug/l
 RT: 12.575 min Scan# 1868
 Delta R.T. -0.147 min
 Lab File: VD078053.D
 Acq: 22 Dec 2023 05:40



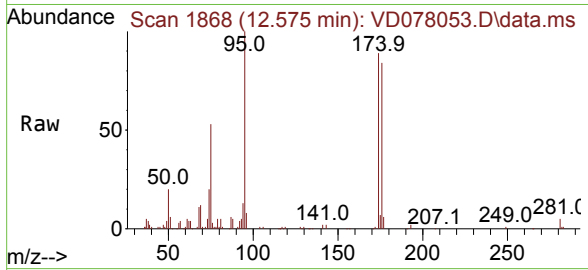
Tgt Ion: 75 Resp: 54860
 Ion Ratio Lower Upper
 75 100
 77 1.7 0.0 0.0#





#81
 trans-1,4-Dichloro-2-butene
 Concen: 108.697 ug/l
 RT: 12.575 min Scan# 1868
 Delta R.T. 0.106 min
 Lab File: VD078053.D
 Acq: 22 Dec 2023 05:40

Instrument :
 MSVOA_D
 ClientSampleId :



Tgt Ion: 75 Resp: 54860

Ion	Ratio	Lower	Upper
75	100		
53	0.1	63.0	94.4#
89	0.0	37.9	56.9#

