

Data Path : Z:\VOASRV\HPCHEM1\MSVOA D\DATA\VD122619\
 Data File : VD064624.D
 Acq On : 27 Dec 2019 04:27
 Operator : VA/SY
 Sample : K6439-04
 Misc : 5.22G/5.00ml/MSVOA D/SOIL
 ALS Vial : 40 Sample Multiplier: 1

Instrument :
 MSVOA_D
 ClientSampleId :
 LIED-BF001-02

Quant Time: Dec 27 05:05:48 2019
 Quant Method : Z:\VOASRV\HPCHEM1\MSVOA_D\METHOD\82D122419S.M
 Quant Title : SW846 8260
 QLast Update : Tue Dec 24 13:19:06 2019
 Response via : Initial Calibration

Internal Standards	R.T.	QIon	Response	Conc	Units	Dev(Min)
1) Pentafluorobenzene	7.98	168	8778	50.00	ug/l	0.00
34) 1,4-Difluorobenzene	8.87	114	13089	50.00	ug/l	0.00
63) Chlorobenzene-d5	11.65	117	12012	50.00	ug/l	0.00
72) 1,4-Dichlorobenzene-d4	13.58	152	5728	50.00	ug/l	0.00

System Monitoring Compounds

33) 1,2-Dichloroethane-d4	8.33	65	5989	77.37	ug/l	0.00
Spiked Amount	50.000		Recovery	=	154.74%	
35) Dibromofluoromethane	7.93	113	4523	56.32	ug/l	0.00
Spiked Amount	50.000		Recovery	=	112.64%	
50) Toluene-d8	10.34	98	14045	45.67	ug/l	0.00
Spiked Amount	50.000		Recovery	=	91.34%	
62) 4-Bromofluorobenzene	12.64	95	4749	48.83	ug/l	0.00
Spiked Amount	50.000		Recovery	=	97.66%	

Target Compounds

						Qvalue
3) Chloromethane	2.20	50	803	8.417	ug/l #	75
4) Vinyl Chloride	2.35	62	322	2.768	ug/l #	84
5) Bromomethane	2.80	94	999	11.811	ug/l	82
7) Trichlorofluoromethane	3.29	101	345	1.761	ug/l #	81
8) Diethyl Ether	3.67	74	59	1.517	ug/l #	2
10) Methyl Iodide	4.31	142	648	7.437	ug/l #	75
12) 1,1-Dichloroethene	4.09	96	319	4.131	ug/l #	62
13) Acrolein	3.80	56	73	11.808	ug/l #	14
14) Allyl chloride	4.71	41	123	1.022	ug/l #	59
15) Acrylonitrile	5.43	53	59	3.642	ug/l #	1
16) Acetone	4.16	43	159	12.786	ug/l #	42
17) Carbon Disulfide	4.42	76	951	3.808	ug/l #	75
18) Methyl Acetate	4.72	43	129	2.960	ug/l #	51
20) Methylene Chloride	4.95	84	56	Below Cal	#	7
21) trans-1,2-Dichloroethene	5.47	96	112	1.273	ug/l #	1
22) Diisopropyl ether	6.36	45	258	1.074	ug/l #	45
23) Vinyl Acetate	6.36	43	186	1.365	ug/l #	72
24) 1,1-Dichloroethane	6.27	63	205	1.422	ug/l #	80
25) 2-Butanone	7.22	43	76	3.572	ug/l #	49
27) cis-1,2-Dichloroethene	7.21	96	223	2.349	ug/l	78
28) Bromochloromethane	7.70	49	58	1.035	ug/l #	11
29) Tetrahydrofuran	7.58	42	182	13.755	ug/l #	33
30) Chloroform	7.73	83	496	3.279	ug/l #	18
31) Cyclohexane	7.98	56	626	4.338	ug/l #	19
36) 1,1-Dichloropropene	8.12	75	731	5.802	ug/l #	60
37) Ethyl Acetate	7.30	43	74	1.495	ug/l #	70
38) Carbon Tetrachloride	7.98	117	319	2.375	ug/l #	12
39) Methylcyclohexane	9.35	83	956	6.265	ug/l #	38
40) Benzene	8.36	78	1154	3.355	ug/l #	50
41) Methacrylonitrile	7.53	41	79	2.751	ug/l #	41
42) 1,2-Dichloroethane	8.44	62	126	1.268	ug/l #	73
44) Trichloroethene	9.11	130	453	4.484	ug/l	81
48) Methyl methacrylate	9.44	41	113	2.436	ug/l #	15
51) 4-Methyl-2-Pentanone	10.24	43	217	4.457	ug/l #	37

Data Path : Z:\VOASRV\HPCHEM1\MSVOA D\DATA\VD122619\
 Data File : VD064624.D
 Acq On : 27 Dec 2019 04:27
 Operator : VA/SY
 Sample : K6439-04
 Misc : 5.22G/5.00ml/MSVOA D/SOIL
 ALS Vial : 40 Sample Multiplier: 1

Instrument :
 MSVOA_D
 ClientSampleId :
 LIED-BF001-02

Quant Time: Dec 27 05:05:48 2019
 Quant Method : Z:\VOASRV\HPCHEM1\MSVOA_D\METHOD\82D122419S.M
 Quant Title : SW846 8260
 QLast Update : Tue Dec 24 13:19:06 2019
 Response via : Initial Calibration

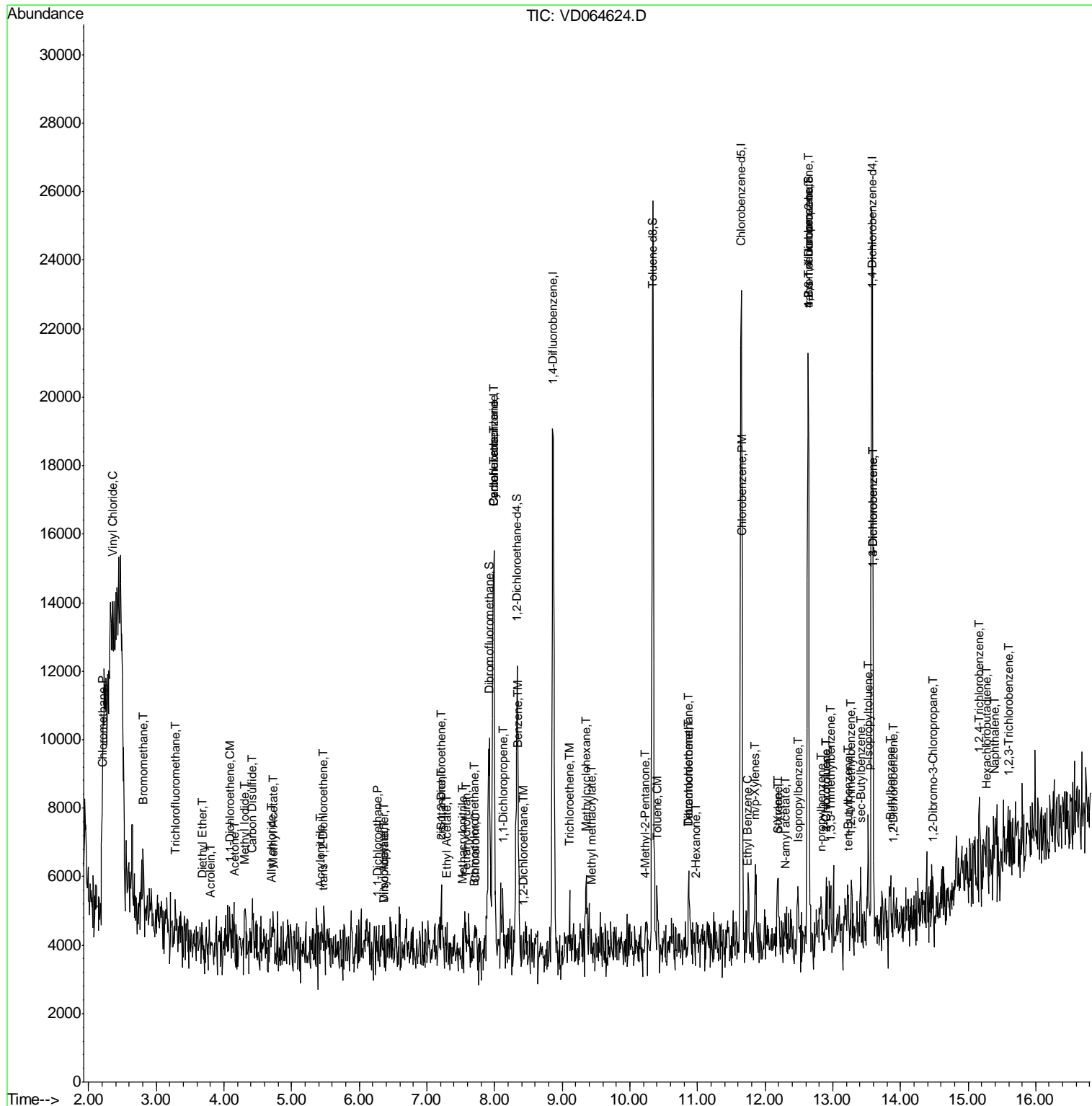
Internal Standards	R.T.	QIon	Response	Conc	Units	Dev(Min)
52) Toluene	10.41	92	689	3.054	ug/l	96
59) 2-Hexanone	10.98	43	132	3.994	ug/l #	26
60) Dibromochloromethane	10.87	129	525	6.153	ug/l #	11
64) Tetrachloroethene	10.87	164	732	7.943	ug/l	94
65) Chlorobenzene	11.67	112	858	3.442	ug/l	96
67) Ethyl Benzene	11.74	91	1099	2.429	ug/l #	82
68) m/p-Xylenes	11.85	106	1038	5.943	ug/l	90
69) o-Xylene	12.18	106	309	1.959	ug/l	58
70) Styrene	12.20	104	588	2.123	ug/l #	65
73) Isopropylbenzene	12.48	105	1424	3.479	ug/l #	60
74) N-amyl acetate	12.30	43	118	1.349	ug/l #	43
76) 1,2,3-Trichloropropane	12.64	75	3075	67.983	ug/l #	100
78) n-propylbenzene	12.83	91	1514	3.170	ug/l	85
79) 2-Chlorotoluene	12.91	91	658	2.508	ug/l	75
80) 1,3,5-Trimethylbenzene	12.97	105	886	2.635	ug/l #	52
81) trans-1,4-Dichloro-2-buten	12.64	75	3075	142.185	ug/l #	10
82) 4-Chlorotoluene	12.91	91	658	2.357	ug/l	75
83) tert-Butylbenzene	13.23	119	496	1.699	ug/l #	83
84) 1,2,4-Trimethylbenzene	13.27	105	704	2.102	ug/l	87
85) sec-Butylbenzene	13.41	105	1050	2.623	ug/l	95
86) p-Isopropyltoluene	13.53	119	985	2.574	ug/l	95
87) 1,3-Dichlorobenzene	13.60	146	583	3.041	ug/l	78
88) 1,4-Dichlorobenzene	13.60	146	583	3.095	ug/l #	76
89) n-Butylbenzene	13.85	91	1051	3.050	ug/l	96
91) 1,2-Dichlorobenzene	13.90	146	488	2.985	ug/l #	62
92) 1,2-Dibromo-3-Chloropropan	14.49	75	69	6.619	ug/l #	1
93) 1,2,4-Trichlorobenzene	15.16	180	424	3.522	ug/l #	64
94) Hexachlorobutadiene	15.27	225	83	1.096	ug/l #	1
95) Naphthalene	15.40	128	1504	7.897	ug/l #	69
96) 1,2,3-Trichlorobenzene	15.60	180	665	6.471	ug/l	85

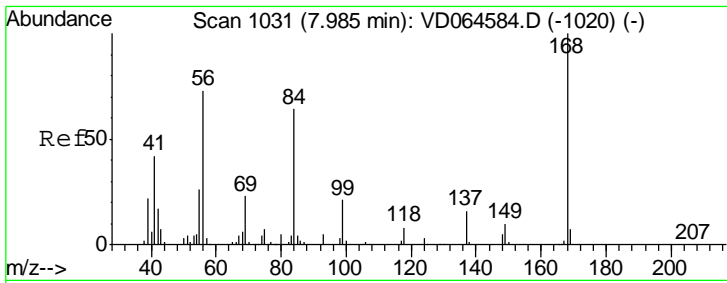
(#) = qualifier out of range (m) = manual integration (+) = signals summed

Data Path : Z:\VOASRV\HPCHEM1\MSVOA D\DATA\VD122619\
 Data File : VD064624.D
 Acq On : 27 Dec 2019 04:27
 Operator : VA/SY
 Sample : K6439-04
 Misc : 5.22G/5.00ml/MSVOA D/SOIL
 ALS Vial : 40 Sample Multiplier: 1

Instrument :
 MSVOA_D
 Client Sampled :
 LIED-BF001-02

Quant Time: Dec 27 05:05:48 2019
 Quant Method : Z:\VOASRV\HPCHEM1\MSVOA_D\METHOD\82D122419S.M
 Quant Title : SW846 8260
 QLast Update : Tue Dec 24 13:19:06 2019
 Response via : Initial Calibration

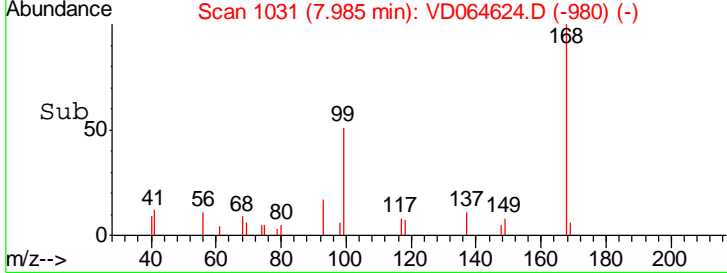
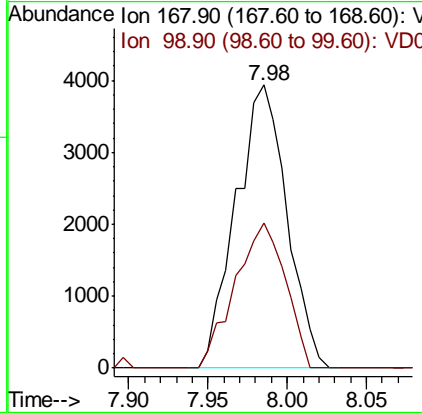
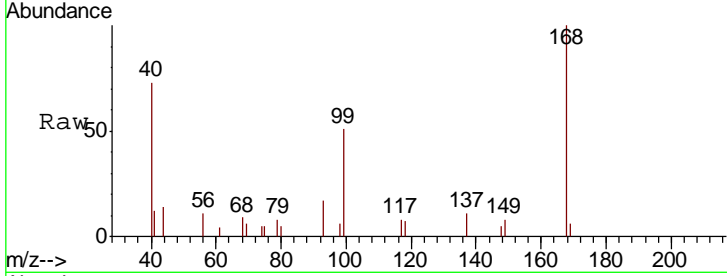




#1
 Pentafluorobenzene
 Concen: 50.000 ug/l
 RT: 7.98 min Scan# 1031
 Delta R.T. 0.00 min
 Lab File: VD064624.D
 Acq: 27 Dec 2019 04:27

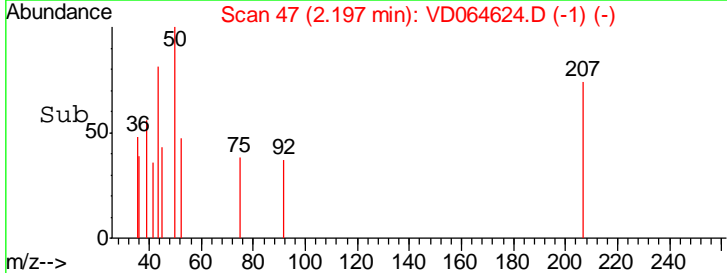
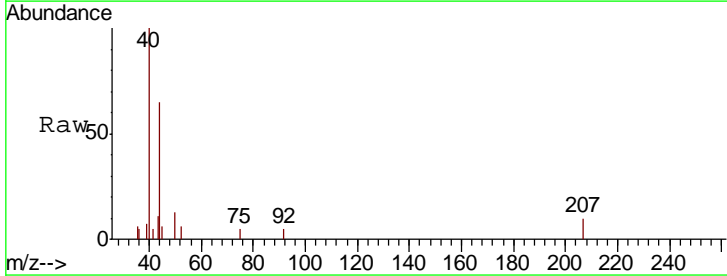
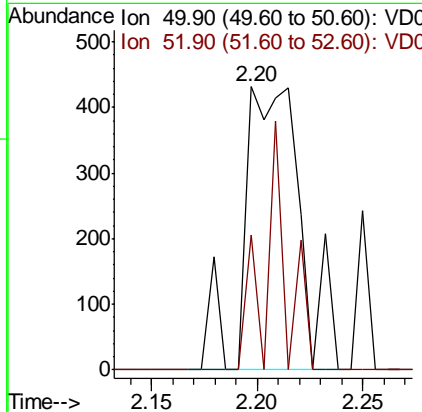
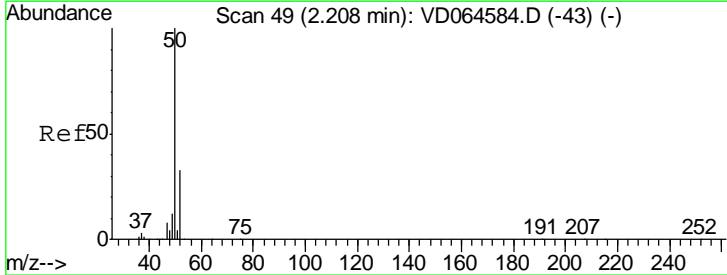
Instrument : MSVOA_D
 ClientSampled : LIED-BF001-02

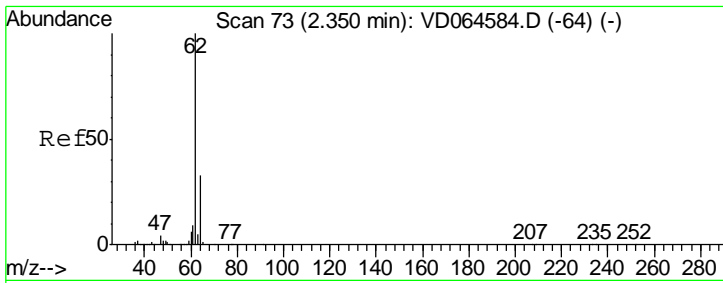
Tgt Ion: 168 Resp: 8778
 Ion Ratio Lower Upper
 168 100
 99 51.2 41.8 62.6



#3
 Chloromethane
 Concen: 8.417 ug/l
 RT: 2.20 min Scan# 47
 Delta R.T. -0.01 min
 Lab File: VD064624.D
 Acq: 27 Dec 2019 04:27

Tgt Ion: 50 Resp: 803
 Ion Ratio Lower Upper
 50 100
 52 47.5 26.5 39.7#

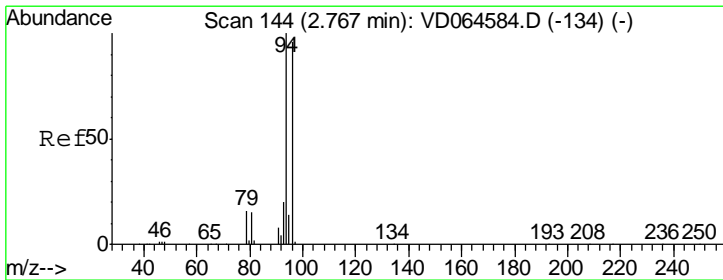
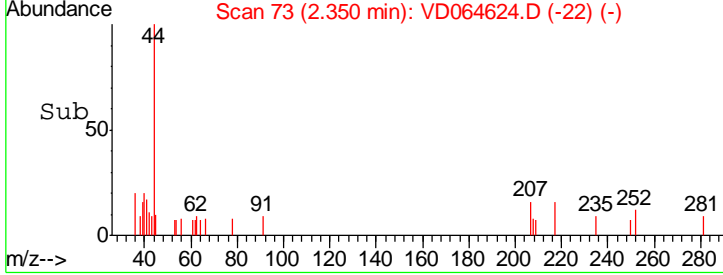
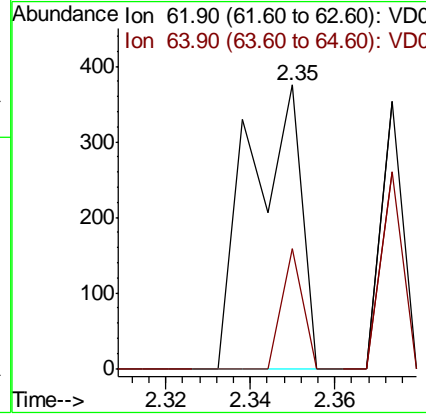
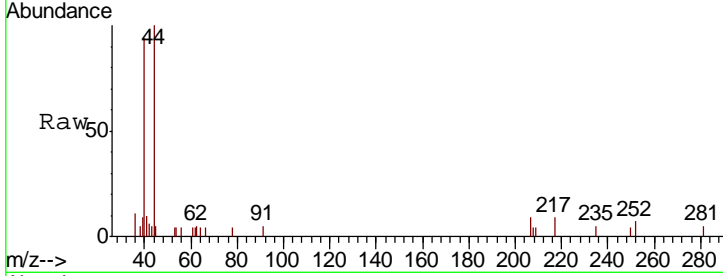




#4
 Vinyl Chloride
 Concen: 2.768 ug/l
 RT: 2.35 min Scan# 73
 Delta R.T. 0.00 min
 Lab File: VD064624.D
 Acq: 27 Dec 2019 04:27

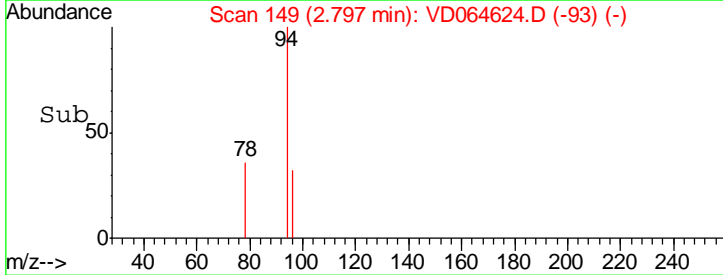
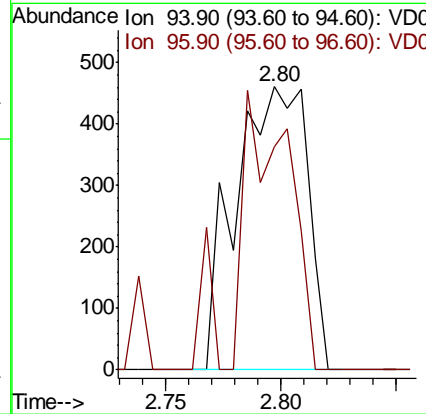
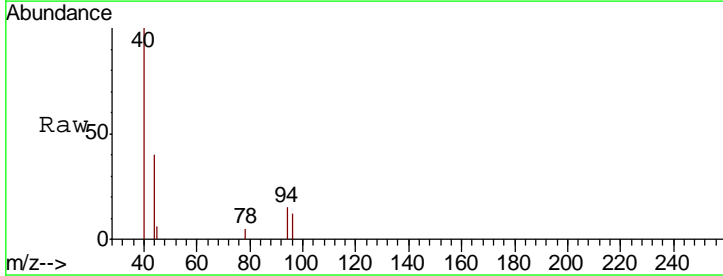
Instrument : MSVOA_D
 ClientSampled : LIED-BF001-02

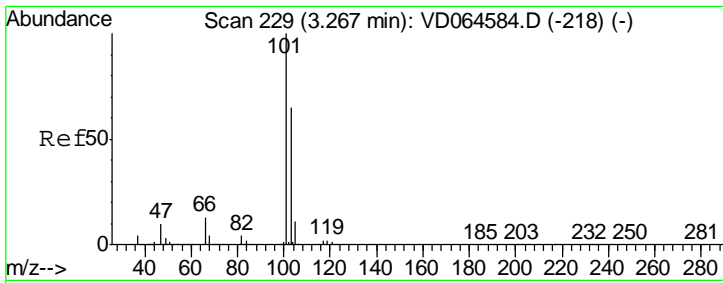
Tgt Ion	Resp	Lower	Upper
62	100		
64	42.4	26.6	40.0#



#5
 Bromomethane
 Concen: 11.811 ug/l
 RT: 2.80 min Scan# 149
 Delta R.T. 0.03 min
 Lab File: VD064624.D
 Acq: 27 Dec 2019 04:27

Tgt Ion	Resp	Lower	Upper
94	100		
96	79.0	77.2	115.8

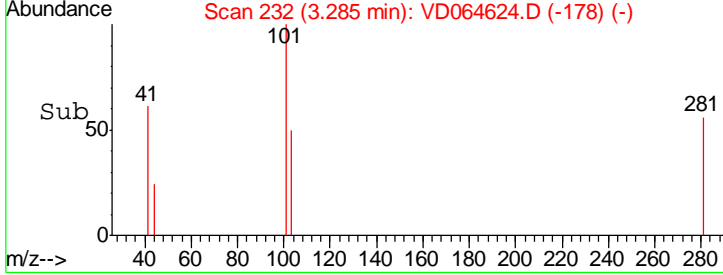
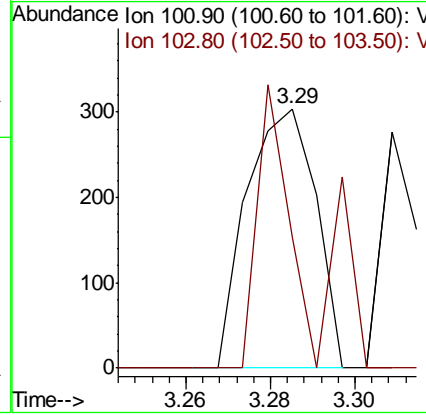
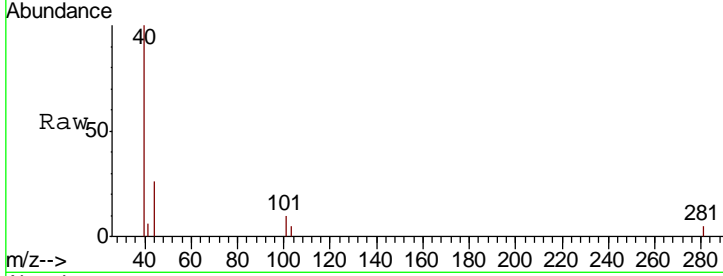




#7
 Trichlorofluoromethane
 Concen: 1.761 ug/l
 RT: 3.29 min Scan# 232
 Delta R.T. 0.02 min
 Lab File: VD064624.D
 Acq: 27 Dec 2019 04:27

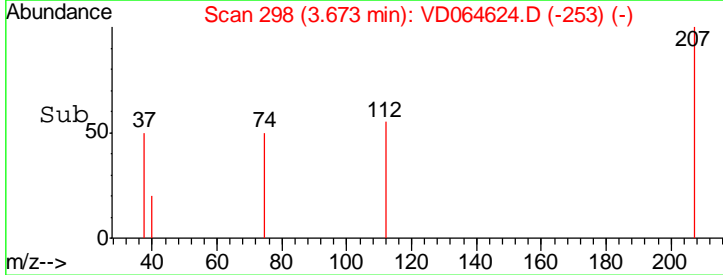
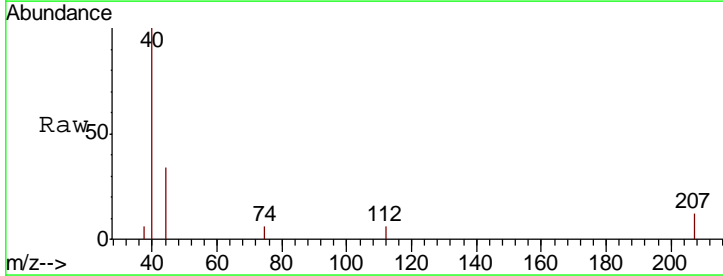
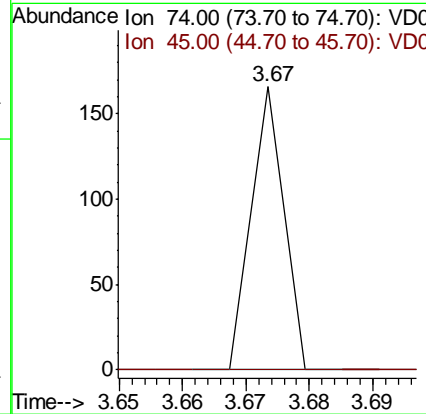
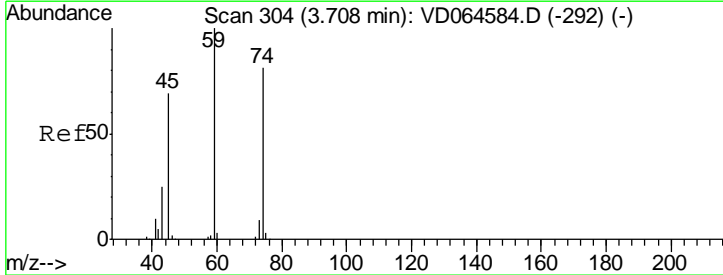
Instrument :
 MSVOA_D
ClientSampled :
 LIED-BF001-02

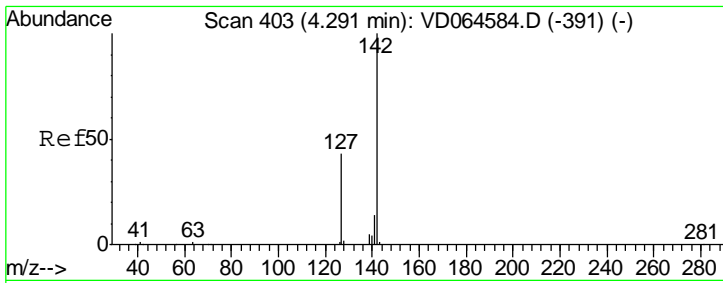
Tgt Ion: 101 Resp: 345
 Ion Ratio Lower Upper
 101 100
 103 50.3 52.2 78.4#



#8
 Diethyl Ether
 Concen: 1.517 ug/l
 RT: 3.67 min Scan# 298
 Delta R.T. -0.03 min
 Lab File: VD064624.D
 Acq: 27 Dec 2019 04:27

Tgt Ion: 74 Resp: 59
 Ion Ratio Lower Upper
 74 100
 45 0.0 47.5 142.5#

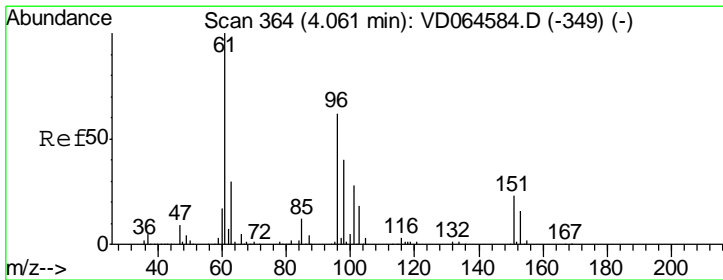
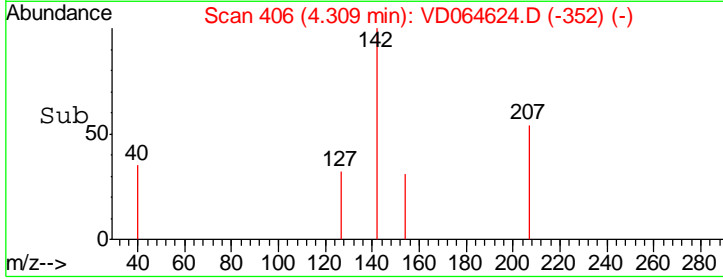
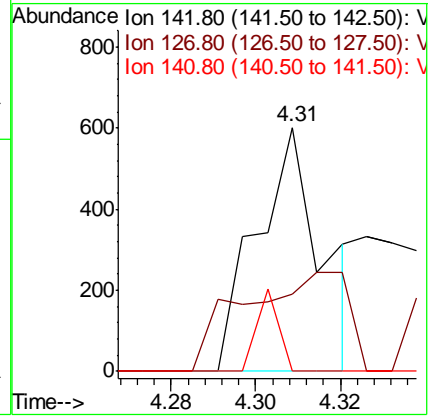
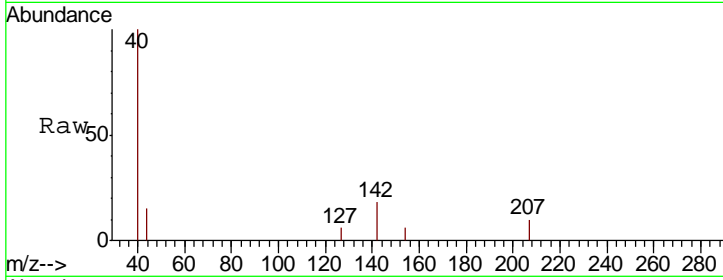




#10
 Methyl Iodide
 Concen: 7.437 ug/l
 RT: 4.31 min Scan# 406
 Delta R.T. 0.02 min
 Lab File: VD064624.D
 Acq: 27 Dec 2019 04:27

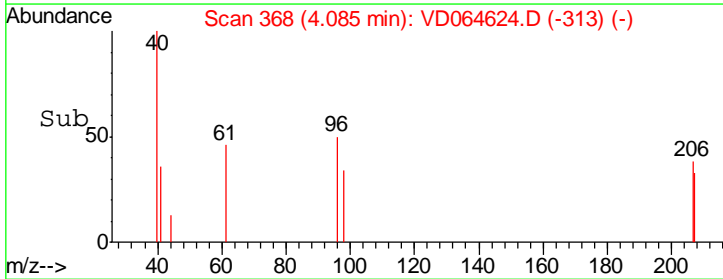
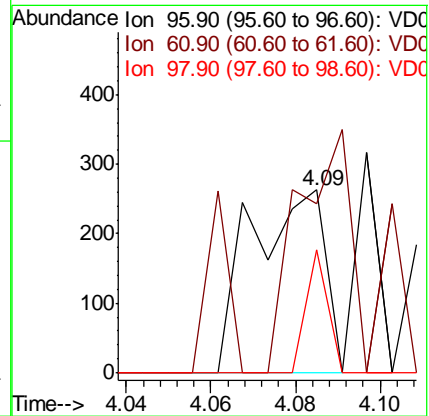
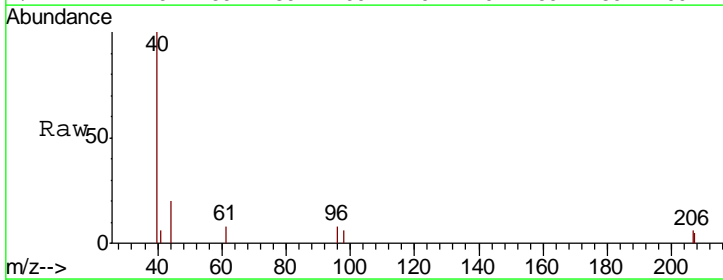
Instrument :
 MSVOA_D
ClientSampled :
 LIED-BF001-02

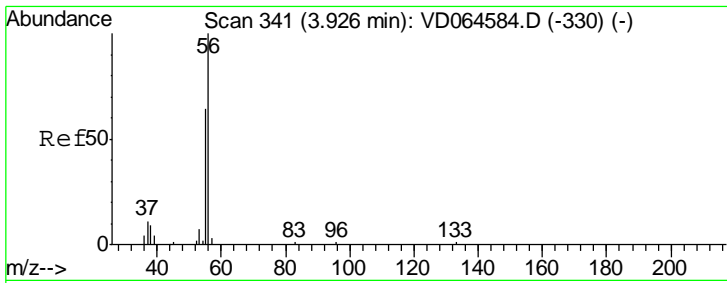
Tgt Ion	Resp	Lower	Upper
142	648		
127	65.0	36.2	54.4#
141	11.1	11.8	17.8#



#12
 1,1-Dichloroethene
 Concen: 4.131 ug/l
 RT: 4.09 min Scan# 368
 Delta R.T. 0.02 min
 Lab File: VD064624.D
 Acq: 27 Dec 2019 04:27

Tgt Ion	Resp	Lower	Upper
96	319		
61	92.8	129.4	194.0#
98	67.3	51.4	77.0

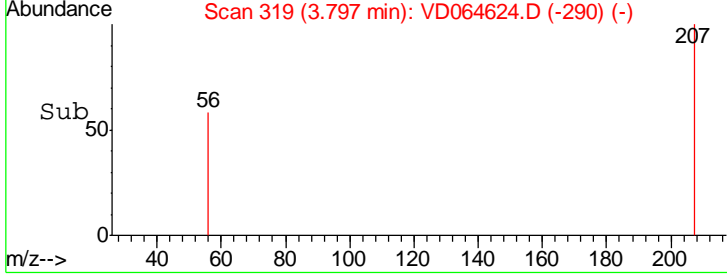
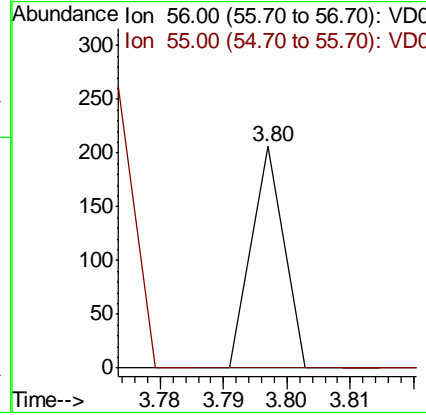
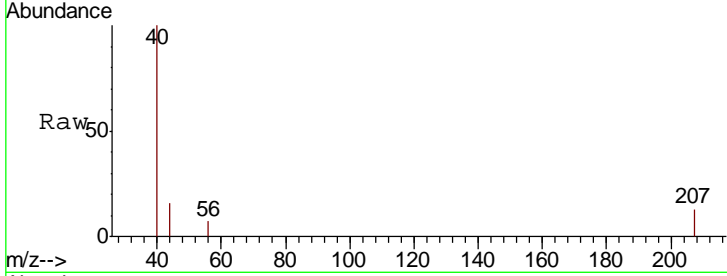




#13
 Acrolein
 Concen: 11.808 ug/l
 RT: 3.80 min Scan# 319
 Delta R.T. -0.13 min
 Lab File: VD064624.D
 Acq: 27 Dec 2019 04:27

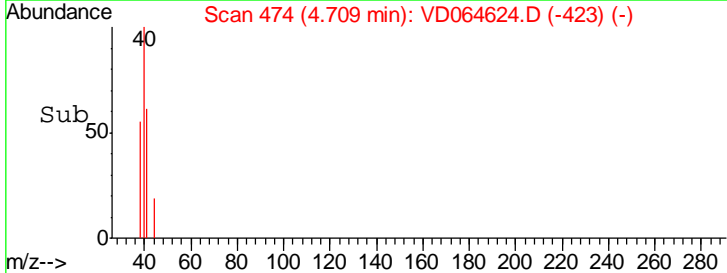
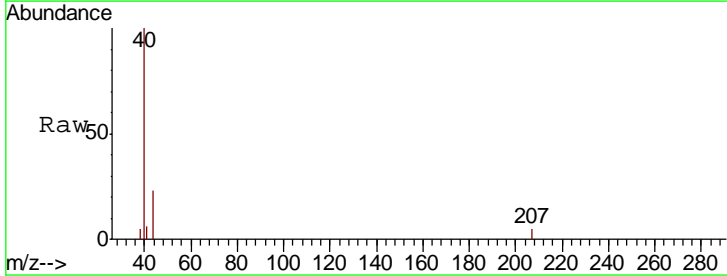
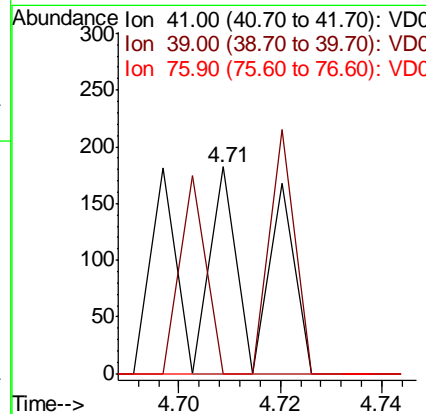
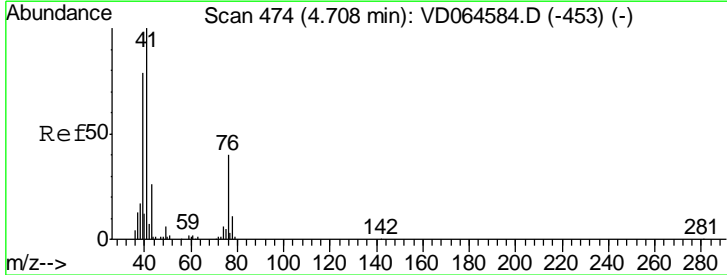
Instrument : MSVOA_D
 ClientSampleID : LIED-BF001-02

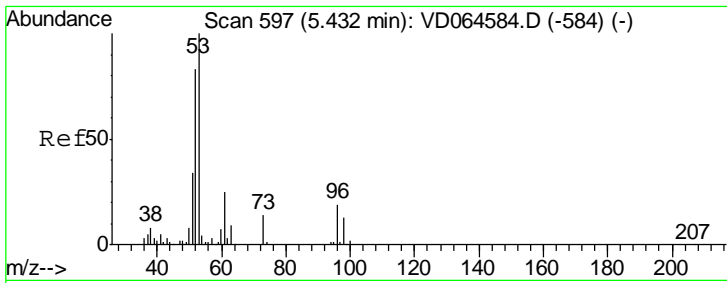
Tgt Ion	Resp	Lower	Upper
56	100		
55	0.0	56.7	85.1#



#14
 Allyl chloride
 Concen: 1.022 ug/l
 RT: 4.71 min Scan# 474
 Delta R.T. 0.00 min
 Lab File: VD064624.D
 Acq: 27 Dec 2019 04:27

Tgt Ion	Resp	Lower	Upper
41	100		
39	50.4	62.3	93.5#
76	0.0	29.7	44.5#

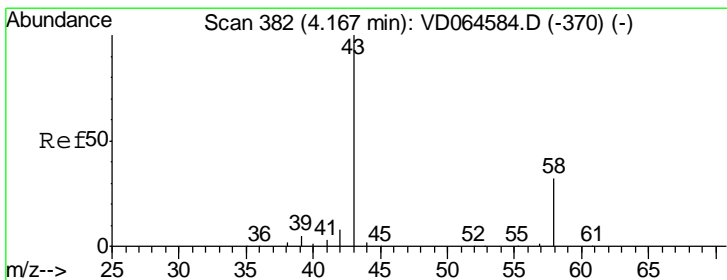
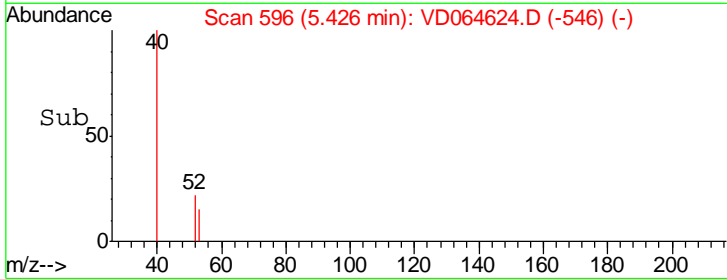
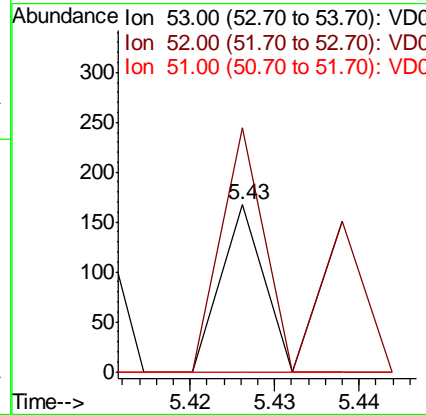
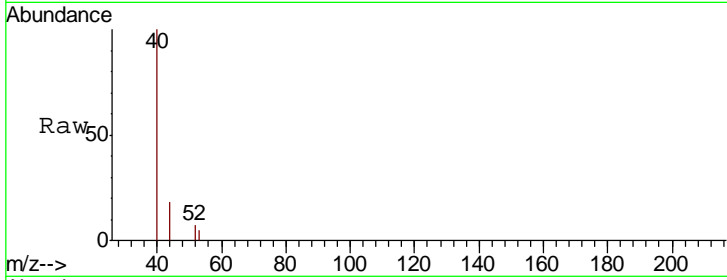




#15
 Acrylonitrile
 Concen: 3.642 ug/l
 RT: 5.43 min Scan# 596
 Delta R.T. -0.01 min
 Lab File: VD064624.D
 Acq: 27 Dec 2019 04:27

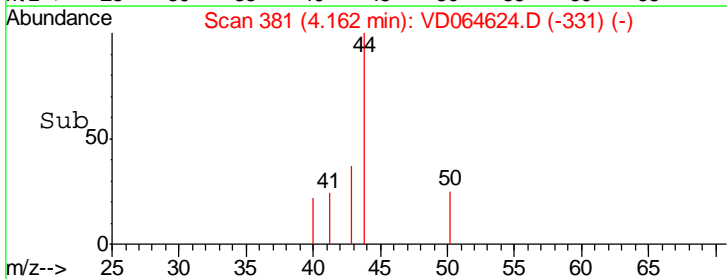
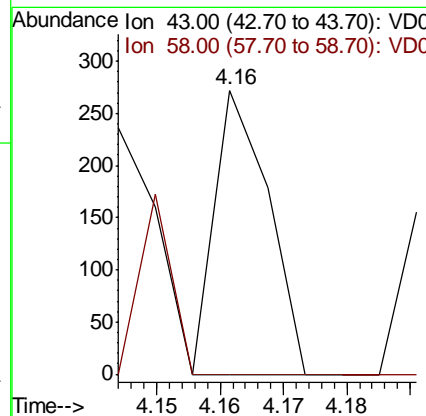
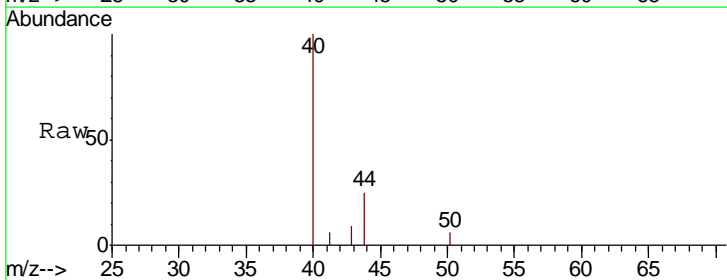
Instrument :
 MSVOA_D
 ClientSampled :
 LIED-BF001-02

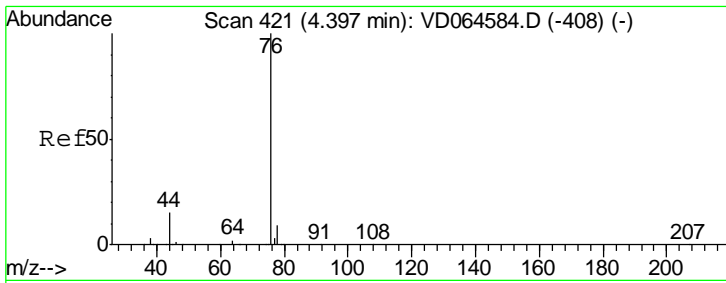
Tgt Ion	Resp	Lower	Upper
53	100		
52	235.6	66.2	99.2#
51	0.0	30.1	45.1#



#16
 Acetone
 Concen: 12.786 ug/l
 RT: 4.16 min Scan# 381
 Delta R.T. -0.01 min
 Lab File: VD064624.D
 Acq: 27 Dec 2019 04:27

Tgt Ion	Resp	Lower	Upper
43	100		
58	0.0	25.8	38.6#

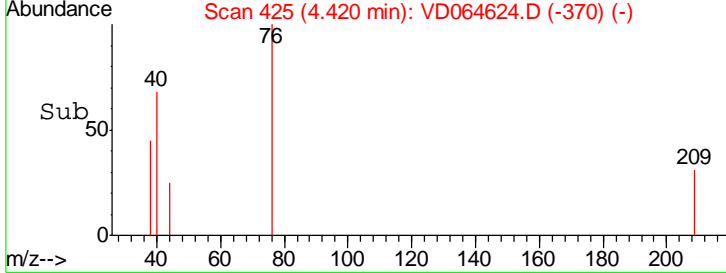
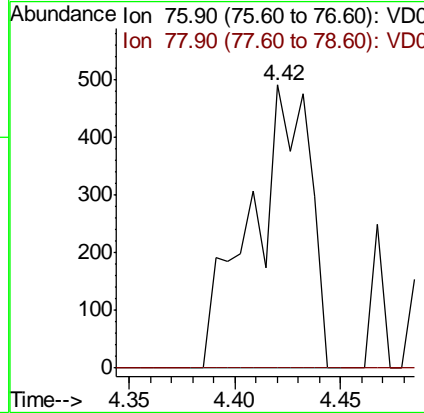
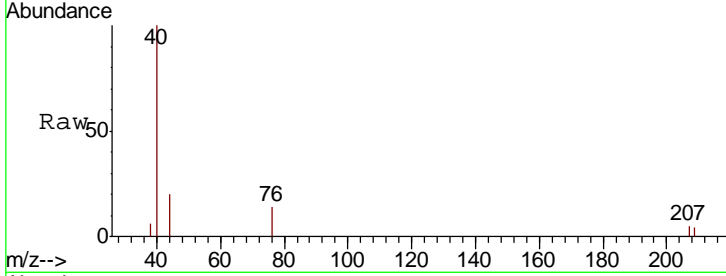




#17
 Carbon Disulfide
 Concen: 3.808 ug/l
 RT: 4.42 min Scan# 425
 Delta R.T. 0.02 min
 Lab File: VD064624.D
 Acq: 27 Dec 2019 04:27

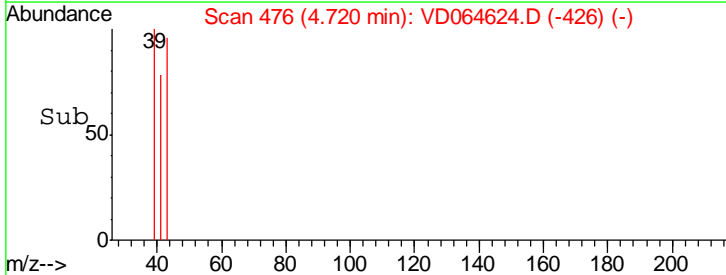
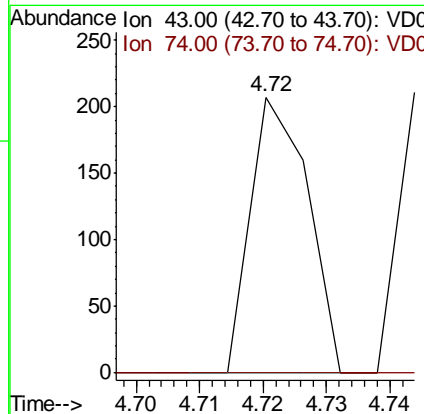
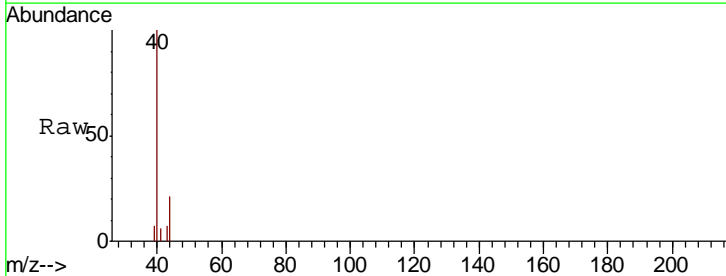
Instrument : MSVOA_D
 ClientSampled : LIED-BF001-02

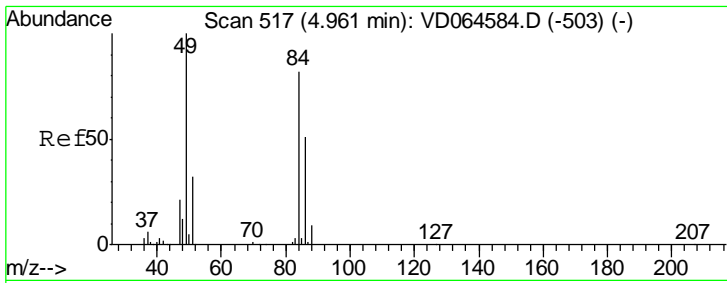
Tgt Ion	Resp	Lower	Upper
76	100		
78	0.0	7.3	10.9#



#18
 Methyl Acetate
 Concen: 2.960 ug/l
 RT: 4.72 min Scan# 476
 Delta R.T. -0.01 min
 Lab File: VD064624.D
 Acq: 27 Dec 2019 04:27

Tgt Ion	Resp	Lower	Upper
43	100		
74	0.0	19.2	28.8#

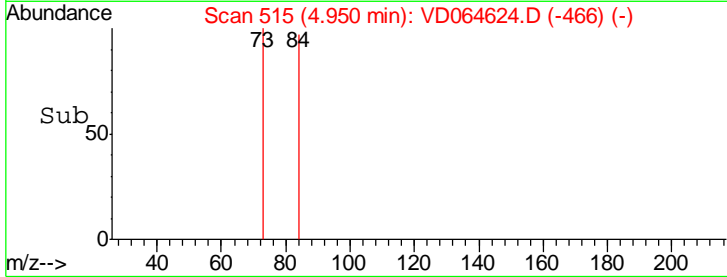
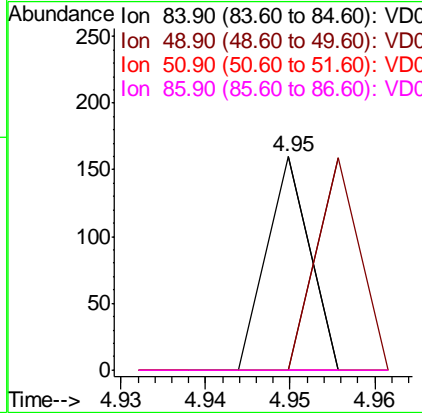
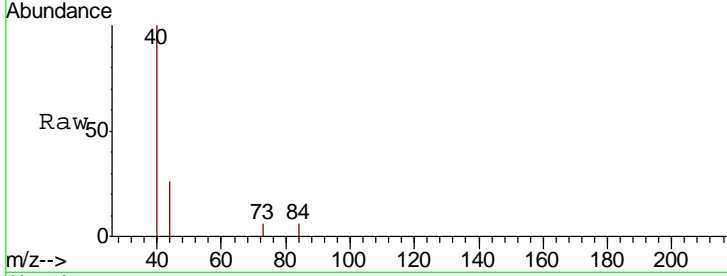




#20
 Methylene Chloride
 Concen: Below Cal
 RT: 4.95 min Scan# 515
 Delta R.T. -0.01 min
 Lab File: VD064624.D
 Acq: 27 Dec 2019 04:27

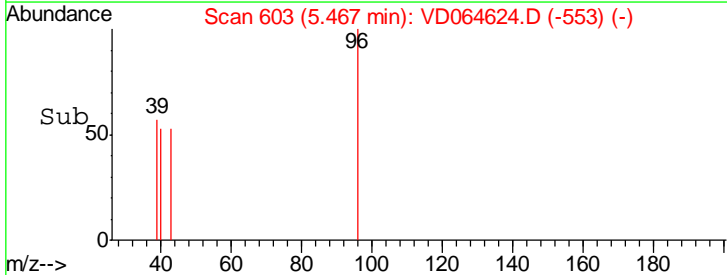
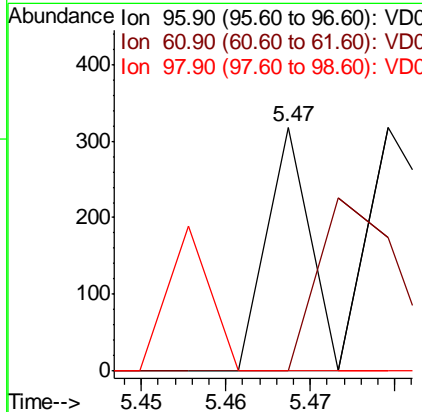
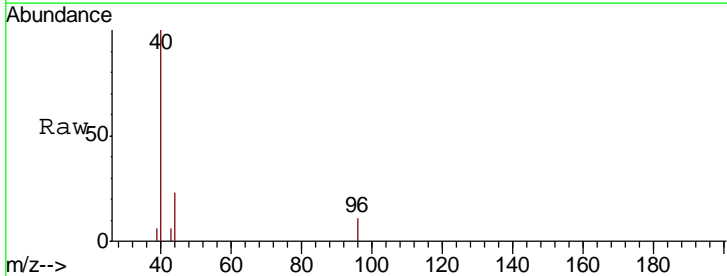
Instrument :
 MSVOA_D
ClientSampled :
 LIED-BF001-02

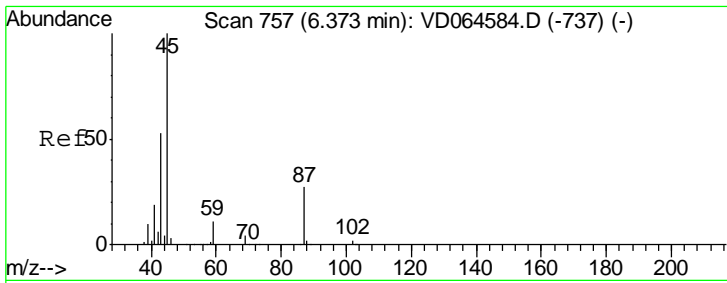
Tgt Ion	Resp	Lower	Upper
84	100		
49	0.0	97.2	145.8#
51	0.0	31.4	47.0#
86	0.0	49.3	73.9#



#21
 trans-1,2-Dichloroethene
 Concen: 1.273 ug/l
 RT: 5.47 min Scan# 603
 Delta R.T. -0.01 min
 Lab File: VD064624.D
 Acq: 27 Dec 2019 04:27

Tgt Ion	Resp	Lower	Upper
96	100		
61	0.0	104.7	157.1#
98	0.0	49.4	74.2#

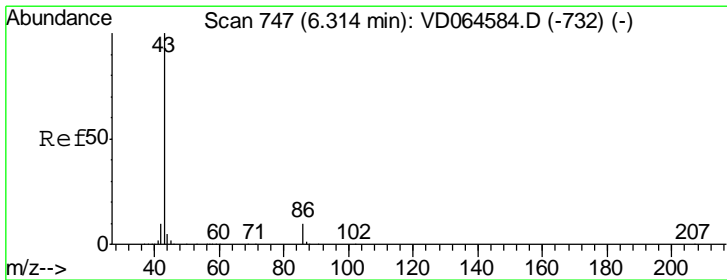
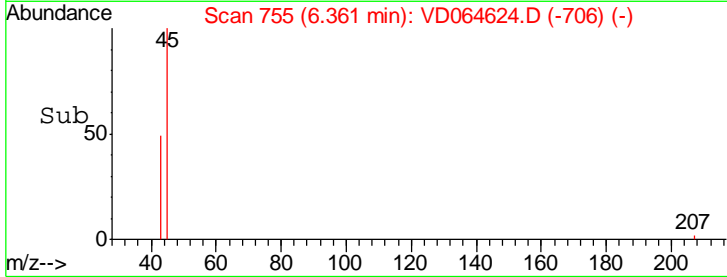
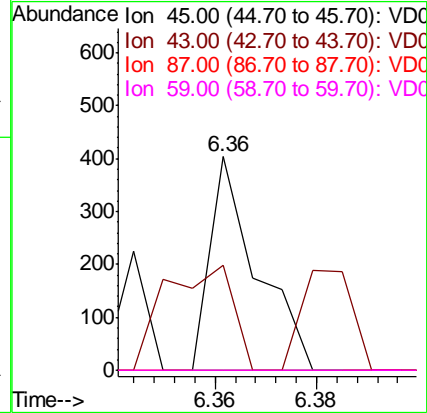
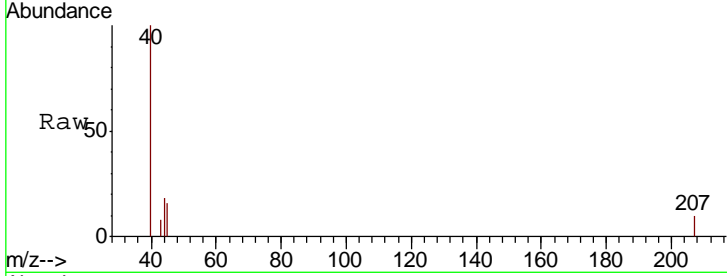




#22
 Diisopropyl ether
 Concen: 1.074 ug/l
 RT: 6.36 min Scan# 755
 Delta R.T. -0.01 min
 Lab File: VD064624.D
 Acq: 27 Dec 2019 04:27

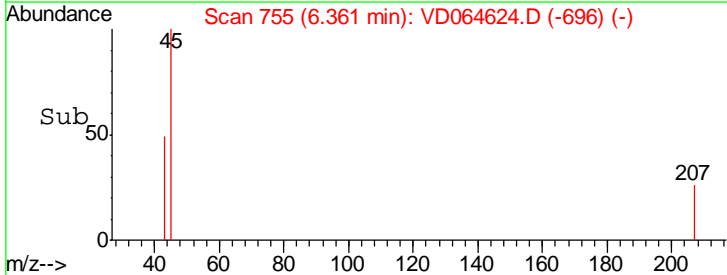
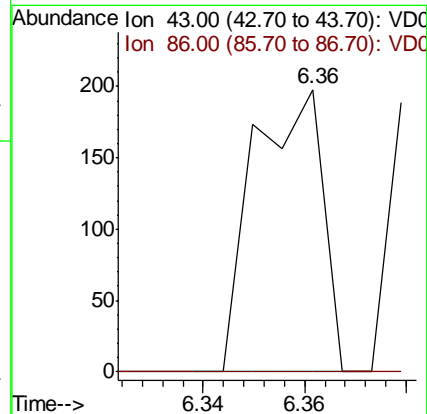
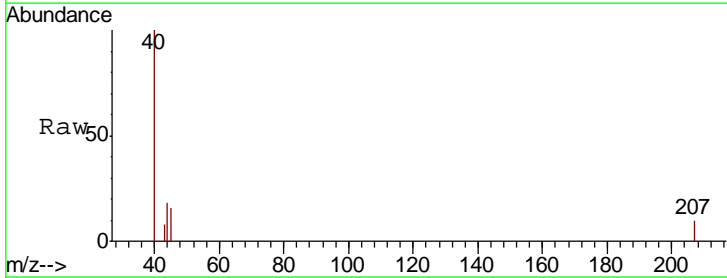
Instrument :
 MSVOA_D
 ClientSampleId :
 LIED-BF001-02

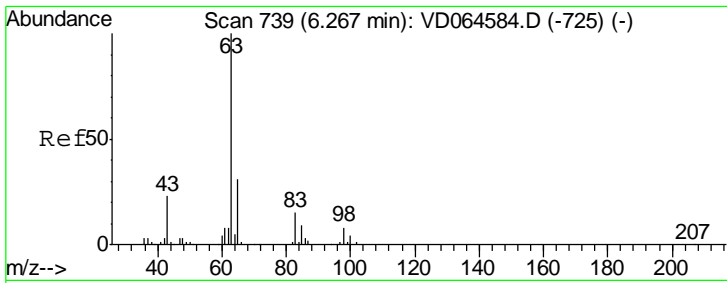
Tgt Ion	Resp	Lower	Upper
45	100		
43	10.4	43.2	64.8#
87	0.0	21.9	32.9#
59	0.0	9.0	13.4#



#23
 Vinyl Acetate
 Concen: 1.365 ug/l
 RT: 6.36 min Scan# 755
 Delta R.T. 0.05 min
 Lab File: VD064624.D
 Acq: 27 Dec 2019 04:27

Tgt Ion	Resp	Lower	Upper
43	100		
86	0.0	8.3	12.5#

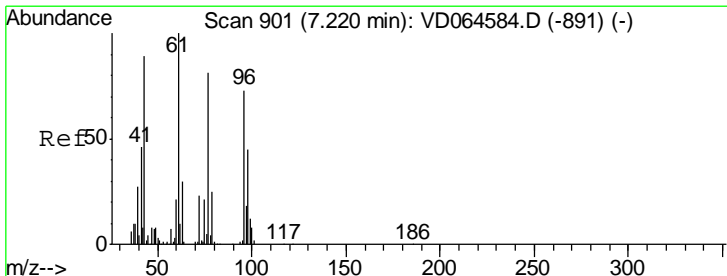
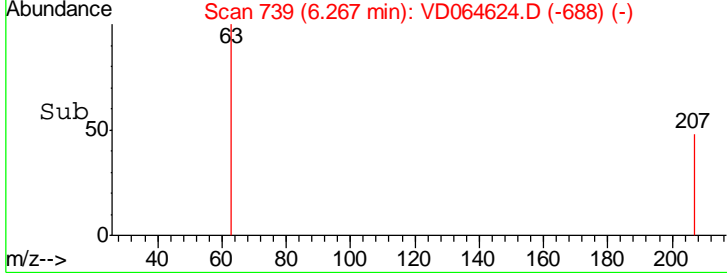
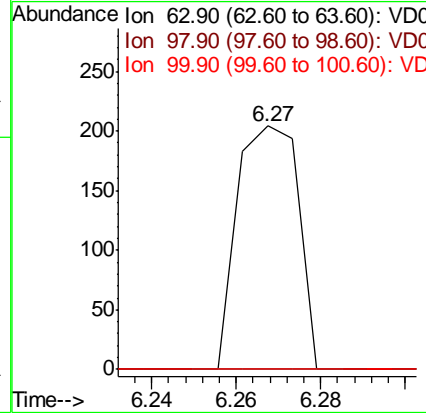
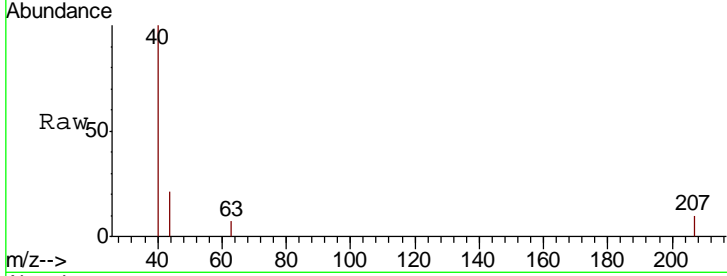




#24
 1,1-Dichloroethane
 Concen: 1.422 ug/l
 RT: 6.27 min Scan# 739
 Delta R.T. 0.00 min
 Lab File: VD064624.D
 Acq: 27 Dec 2019 04:27

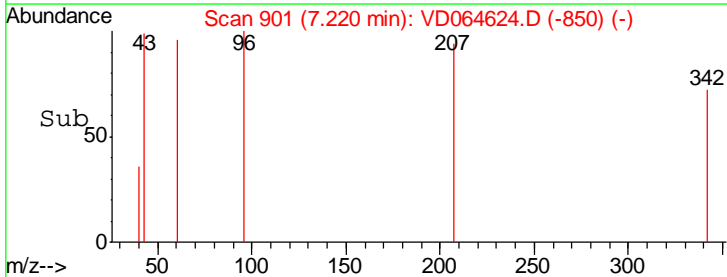
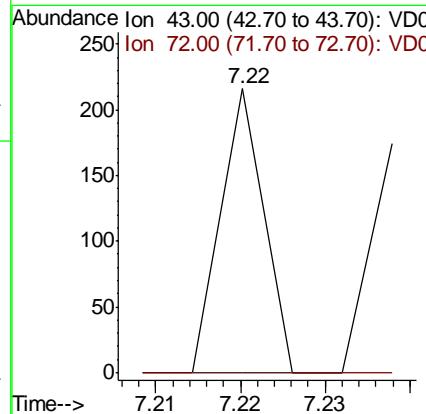
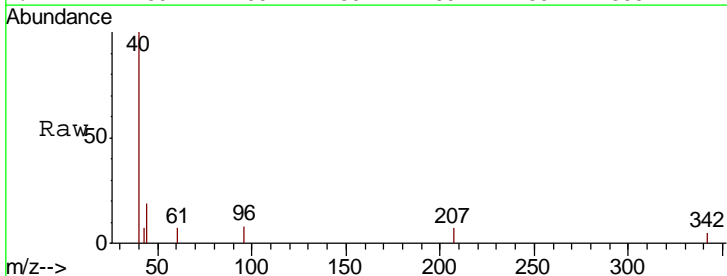
Instrument : MSVOA_D
 ClientSampleID : LIED-BF001-02

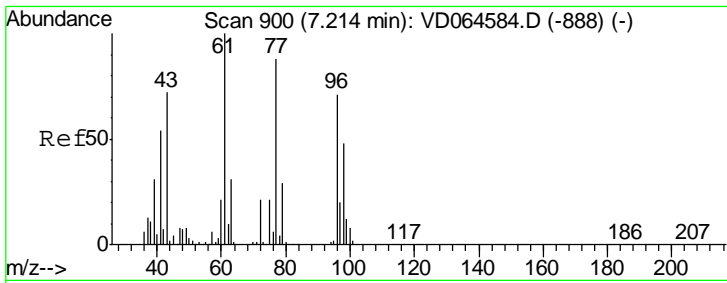
Tgt Ion	Resp	Lower	Upper
63	100		
98	0.0	4.1	12.3#
100	0.0	2.2	6.6#



#25
 2-Butanone
 Concen: 3.572 ug/l
 RT: 7.22 min Scan# 901
 Delta R.T. 0.00 min
 Lab File: VD064624.D
 Acq: 27 Dec 2019 04:27

Tgt Ion	Resp	Lower	Upper
43	100		
72	0.0	20.7	31.1#

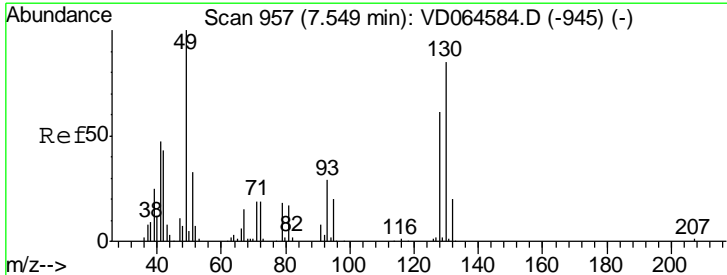
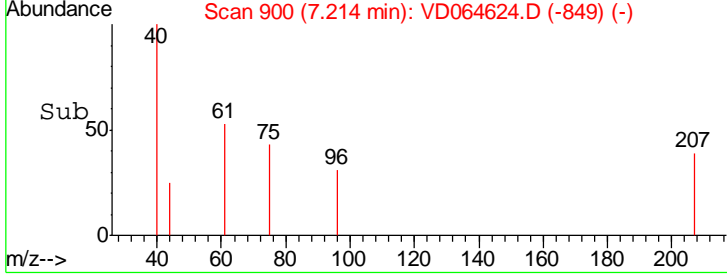
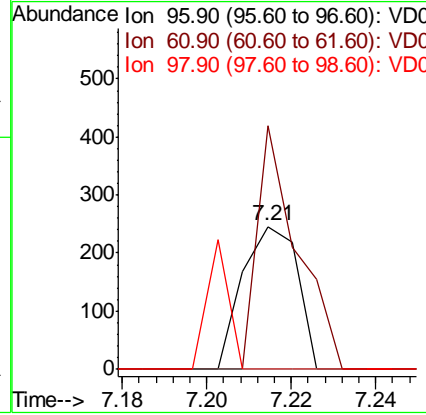
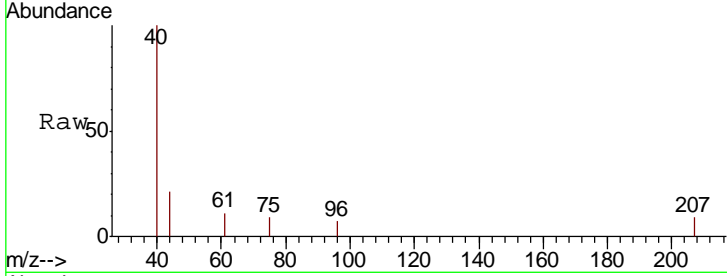




#27
 cis-1,2-Dichloroethene
 Concen: 2.349 ug/l
 RT: 7.21 min Scan# 900
 Delta R.T. 0.00 min
 Lab File: VD064624.D
 Acq: 27 Dec 2019 04:27

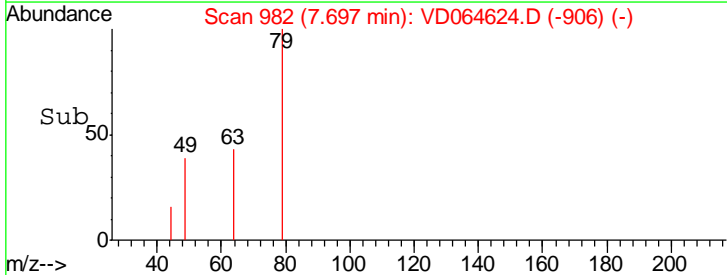
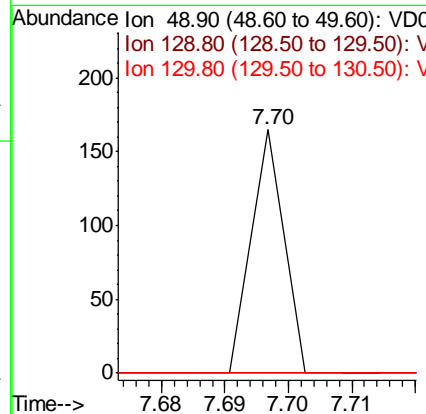
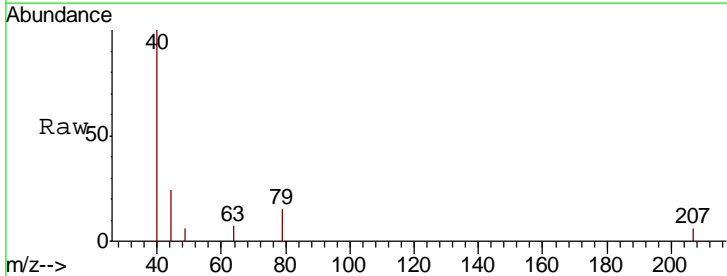
Instrument :
 MSVOA_D
 ClientSampleID :
 LIED-BF001-02

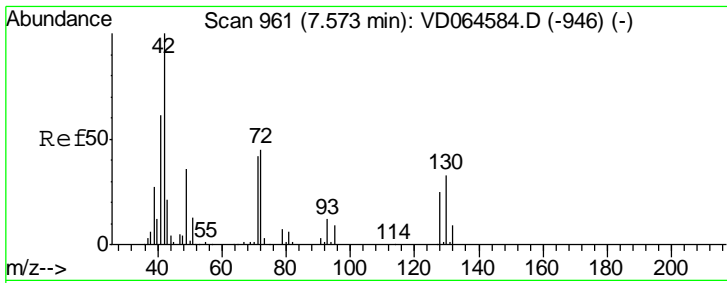
Tgt Ion	Resp	Lower	Upper
96	100		
61	124.2	0.0	282.6
98	35.0	0.0	130.8



#28
 Bromochloromethane
 Concen: 1.035 ug/l
 RT: 7.70 min Scan# 982
 Delta R.T. 0.15 min
 Lab File: VD064624.D
 Acq: 27 Dec 2019 04:27

Tgt Ion	Resp	Lower	Upper
49	100		
129	0.0	0.0	4.8
130	0.0	65.0	97.6#

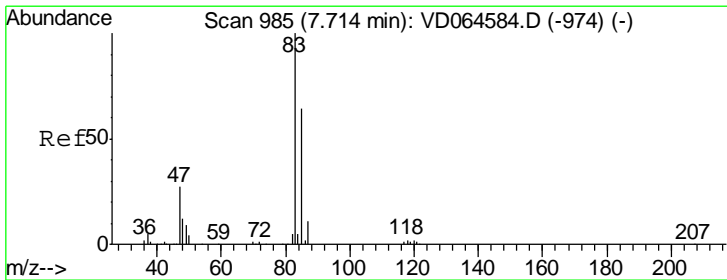
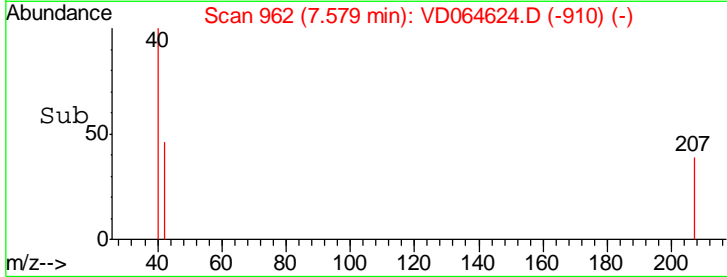
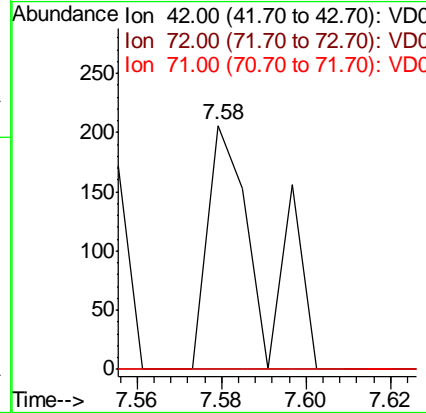
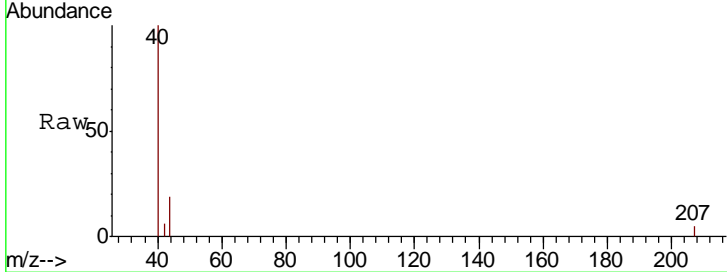




#29
 Tetrahydrofuran
 Concen: 13.755 ug/l
 RT: 7.58 min Scan# 962
 Delta R.T. 0.01 min
 Lab File: VD064624.D
 Acq: 27 Dec 2019 04:27

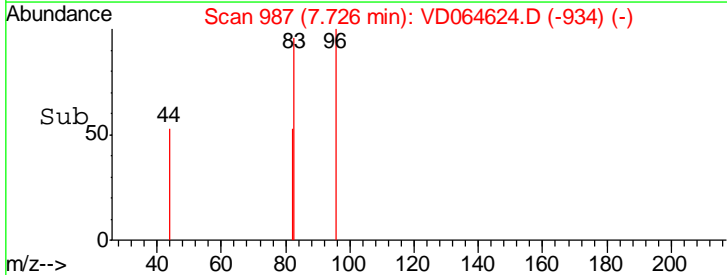
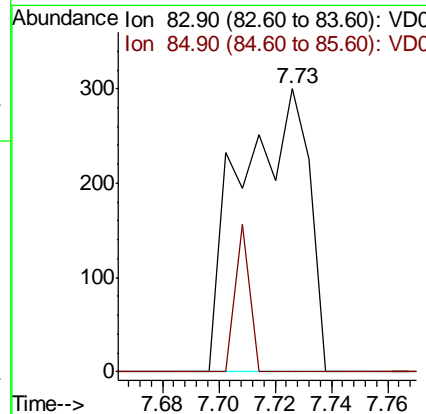
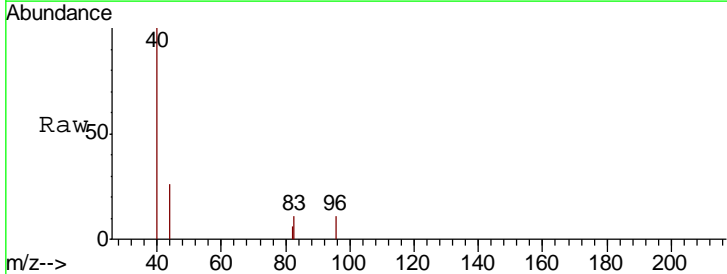
Instrument :
 MSVOA_D
 ClientSampled :
 LIED-BF001-02

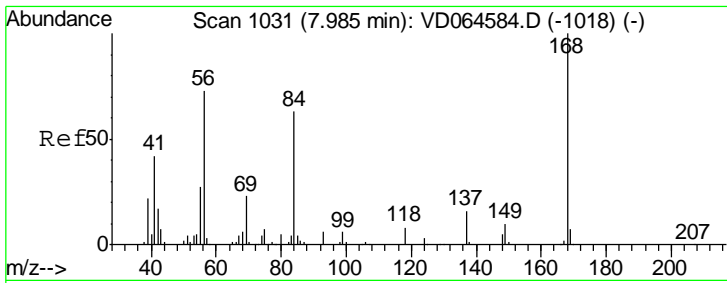
Tgt Ion	Resp	Lower	Upper
42	182		
72	0.0	35.0	52.4#
71	0.0	32.9	49.3#



#30
 Chloroform
 Concen: 3.279 ug/l
 RT: 7.73 min Scan# 987
 Delta R.T. 0.01 min
 Lab File: VD064624.D
 Acq: 27 Dec 2019 04:27

Tgt Ion	Resp	Lower	Upper
83	496		
85	0.0	51.1	76.7#

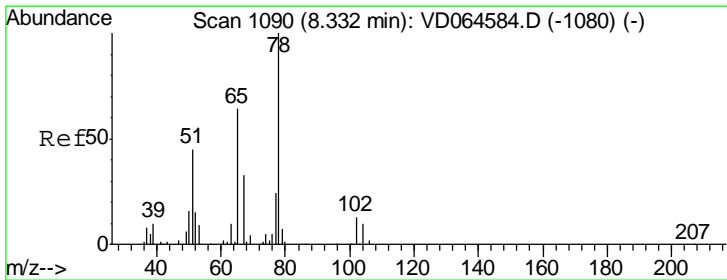
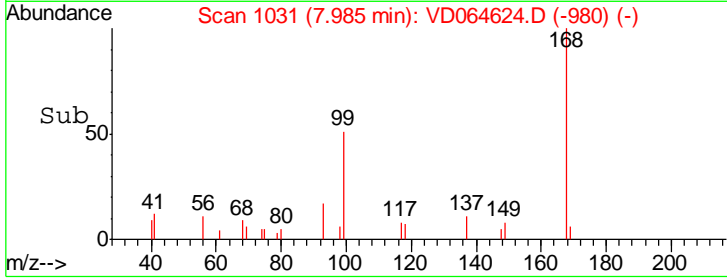
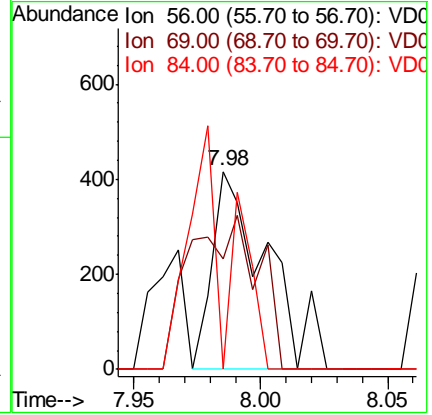
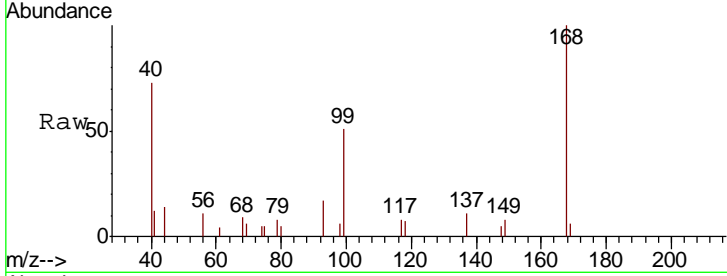




#31
 Cyclohexane
 Concen: 4.338 ug/l
 RT: 7.98 min Scan# 1031
 Delta R.T. 0.00 min
 Lab File: VD064624.D
 Acq: 27 Dec 2019 04:27

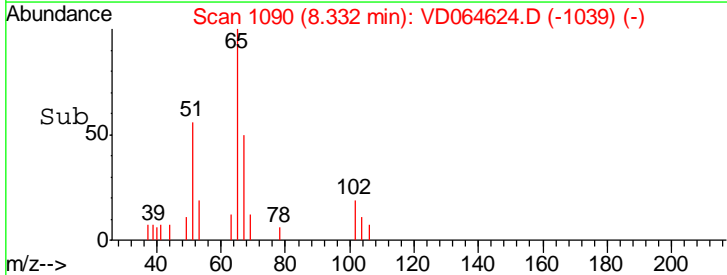
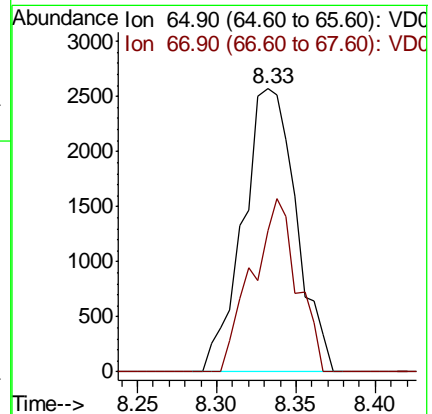
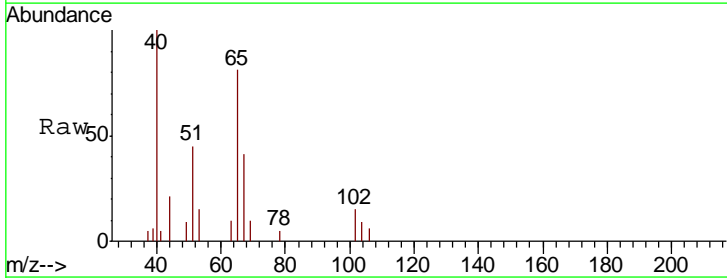
Instrument :
 MSVOA_D
 ClientSampled :
 LIED-BF001-02

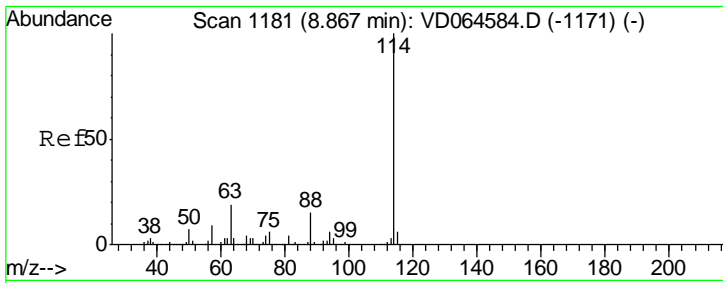
Tgt Ion	Resp	Lower	Upper
56	100		
69	56.3	24.7	37.1#
84	0.0	69.4	104.2#



#33
 1,2-Dichloroethane-d4
 Concen: 77.374 ug/l
 RT: 8.33 min Scan# 1090
 Delta R.T. 0.00 min
 Lab File: VD064624.D
 Acq: 27 Dec 2019 04:27

Tgt Ion	Resp	Lower	Upper
65	100		
67	52.4	0.0	106.2

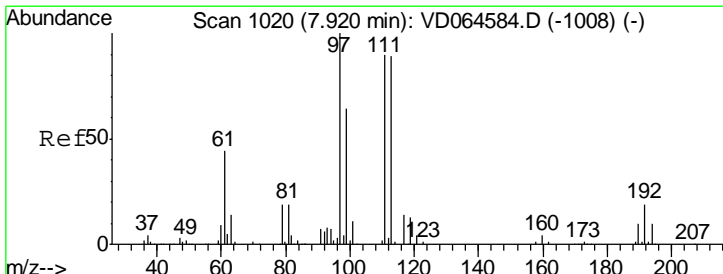
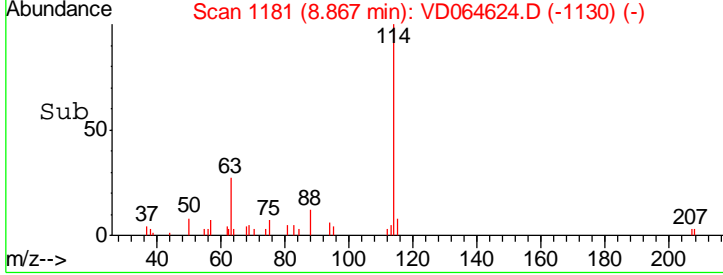
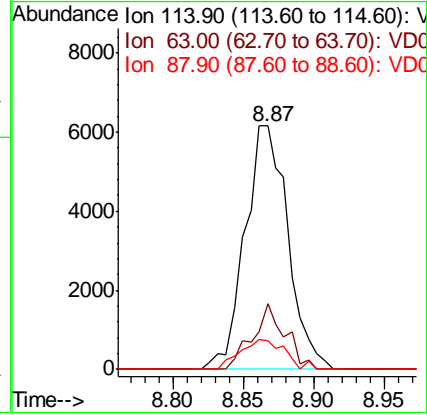
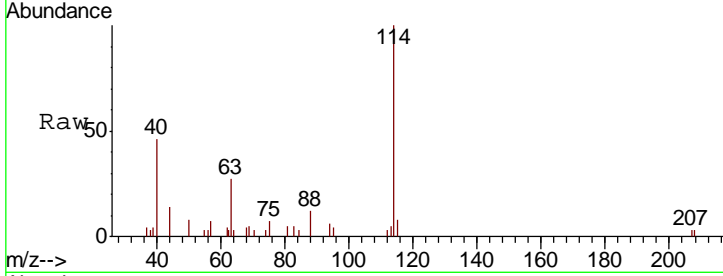




#34
 1,4-Difluorobenzene
 Concen: 50.000 ug/l
 RT: 8.87 min Scan# 1181
 Delta R.T. 0.00 min
 Lab File: VD064624.D
 Acq: 27 Dec 2019 04:27

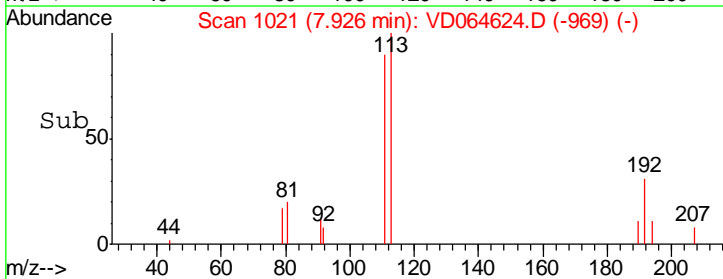
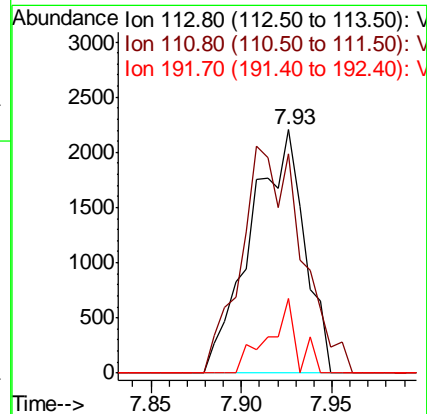
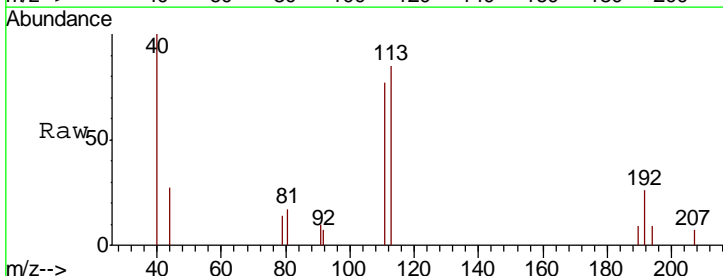
Instrument :
 MSVOA_D
 ClientSampleId :
 LIED-BF001-02

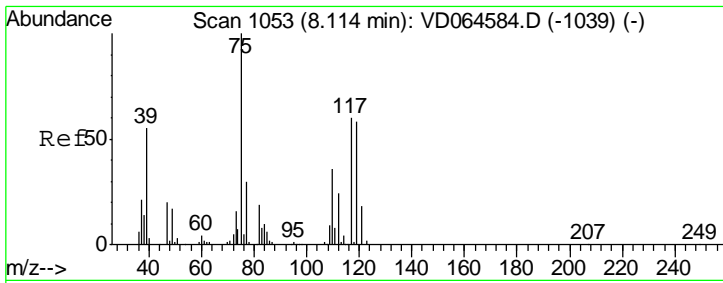
Tgt Ion	Resp	Lower	Upper
114	13089		
63	27.0	0.0	38.0
88	11.7	0.0	29.2



#35
 Dibromofluoromethane
 Concen: 56.324 ug/l
 RT: 7.93 min Scan# 1021
 Delta R.T. 0.01 min
 Lab File: VD064624.D
 Acq: 27 Dec 2019 04:27

Tgt Ion	Resp	Lower	Upper
113	4523		
111	104.9	80.6	121.0
192	16.6	17.9	26.9#

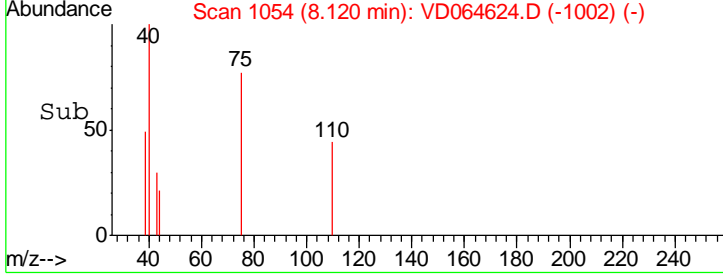
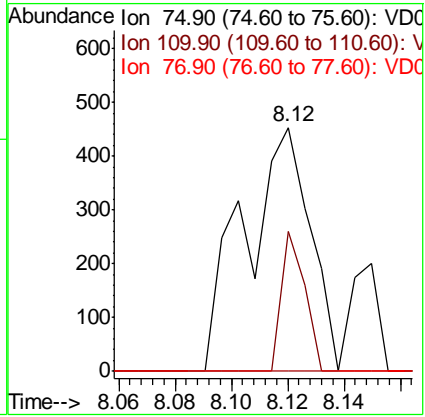
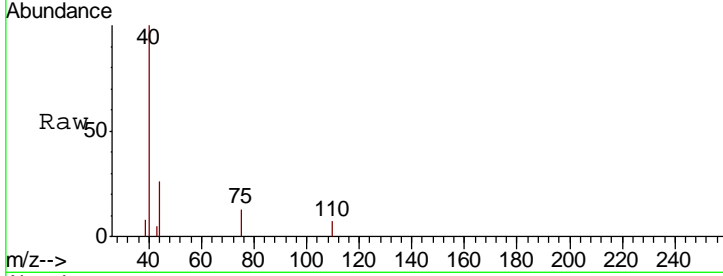




#36
 1,1-Dichloropropene
 Concen: 5.802 ug/l
 RT: 8.12 min Scan# 1054
 Delta R.T. 0.01 min
 Lab File: VD064624.D
 Acq: 27 Dec 2019 04:27

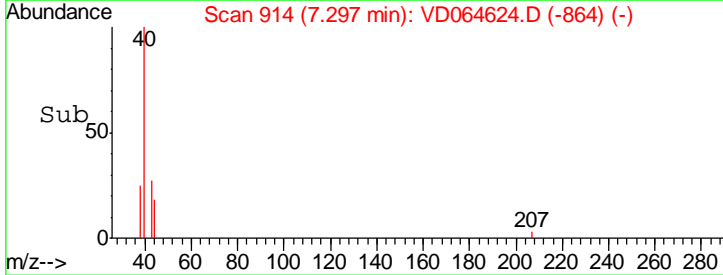
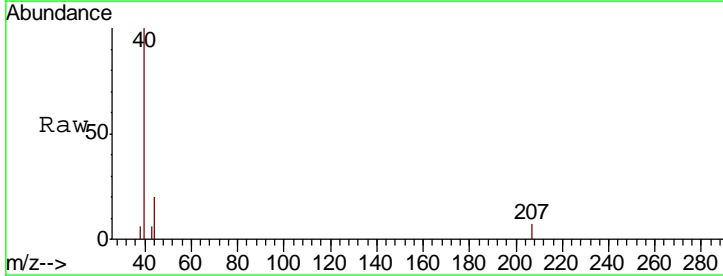
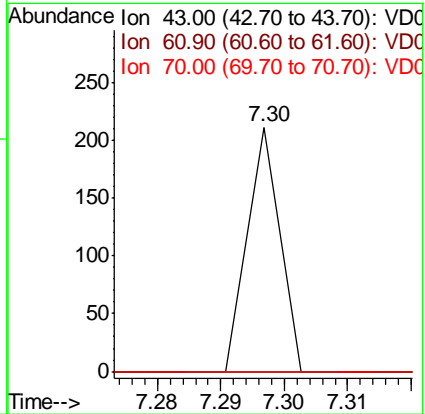
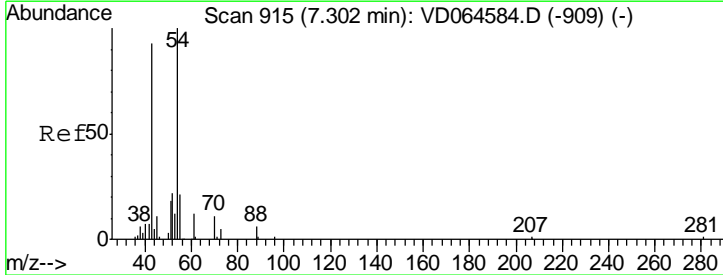
Instrument : MSVOA_D
 ClientSampleId : LIED-BF001-02

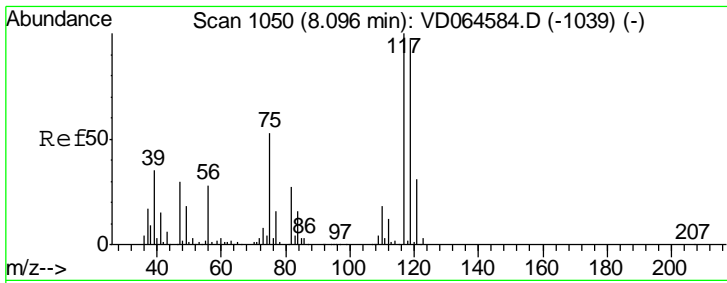
Tgt Ion	Resp	Lower	Upper
75	100		
110	20.4	18.1	54.1
77	0.0	24.2	36.4#



#37
 Ethyl Acetate
 Concen: 1.495 ug/l
 RT: 7.30 min Scan# 914
 Delta R.T. -0.01 min
 Lab File: VD064624.D
 Acq: 27 Dec 2019 04:27

Tgt Ion	Resp	Lower	Upper
43	100		
61	0.0	10.3	15.5#
70	0.0	7.6	11.4#

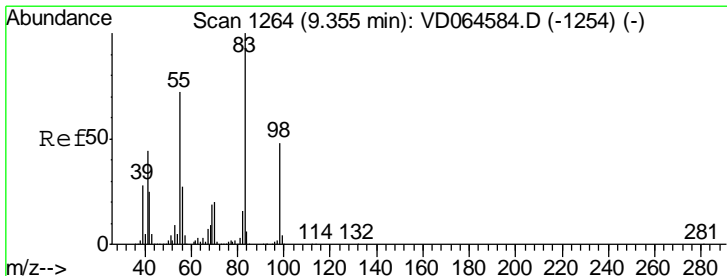
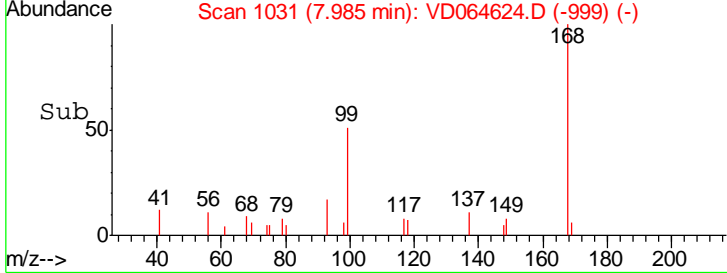
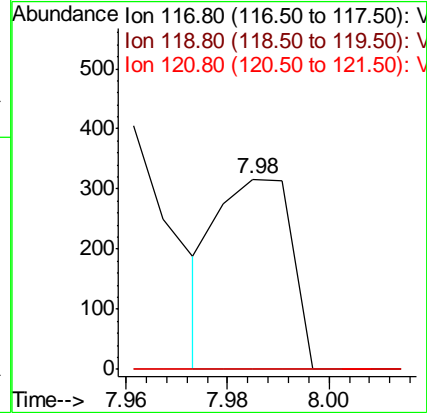
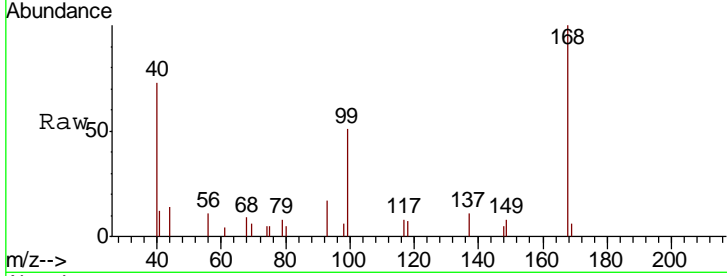




#38
 Carbon Tetrachloride
 Concen: 2.375 ug/l
 RT: 7.98 min Scan# 1031
 Delta R.T. -0.11 min
 Lab File: VD064624.D
 Acq: 27 Dec 2019 04:27

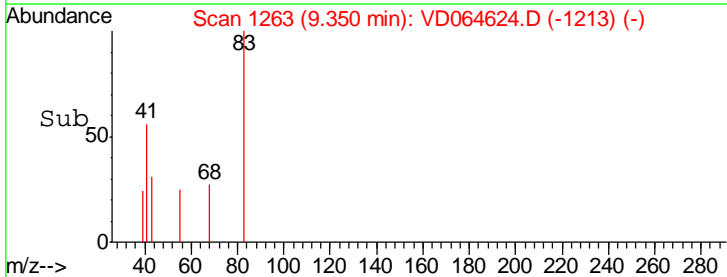
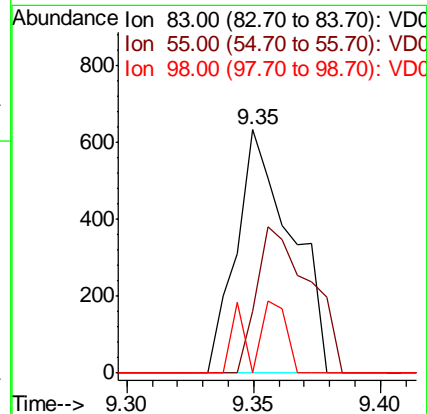
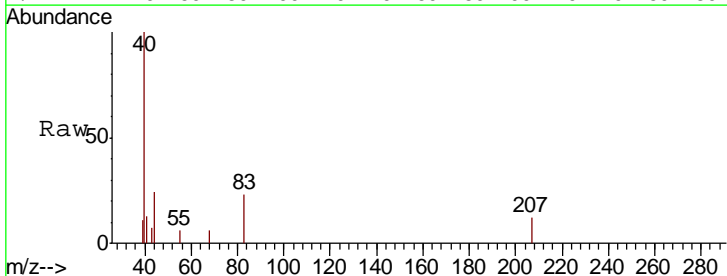
Instrument :
 MSVOA_D
ClientSampled :
 LIED-BF001-02

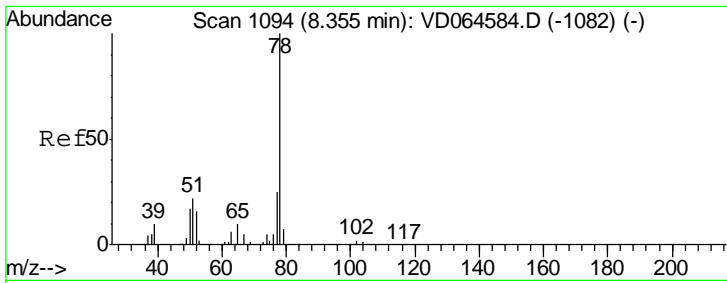
Tgt Ion	Resp	Lower	Upper
117	100		
119	0.0	77.3	115.9#
121	0.0	25.0	37.6#



#39
 Methylcyclohexane
 Concen: 6.265 ug/l
 RT: 9.35 min Scan# 1263
 Delta R.T. -0.01 min
 Lab File: VD064624.D
 Acq: 27 Dec 2019 04:27

Tgt Ion	Resp	Lower	Upper
83	100		
55	25.4	57.8	86.6#
98	0.0	38.7	58.1#

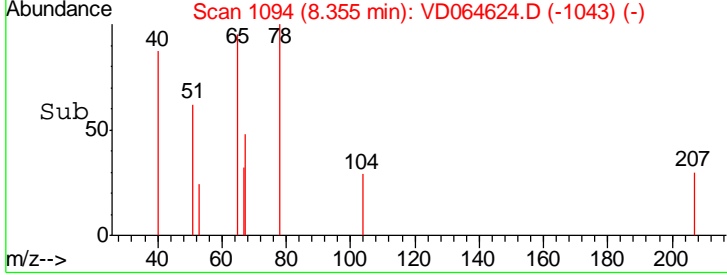
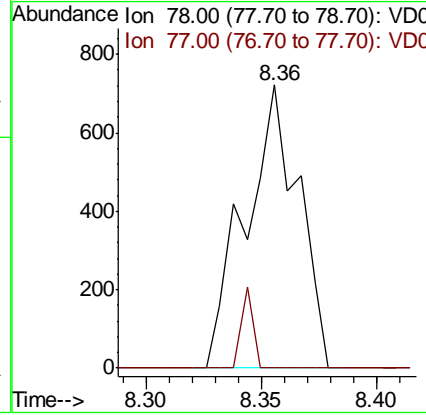
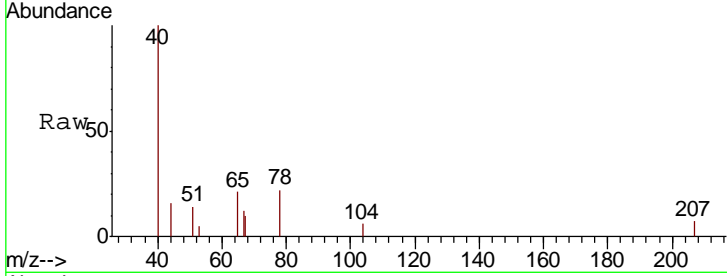




#40
Benzene
Concen: 3.355 ug/l
RT: 8.36 min Scan# 1094
Delta R.T. 0.00 min
Lab File: VD064624.D
Acq: 27 Dec 2019 04:27

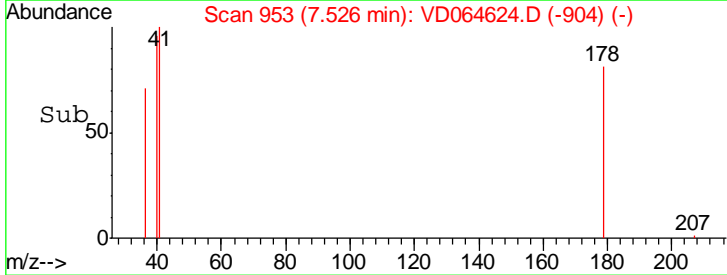
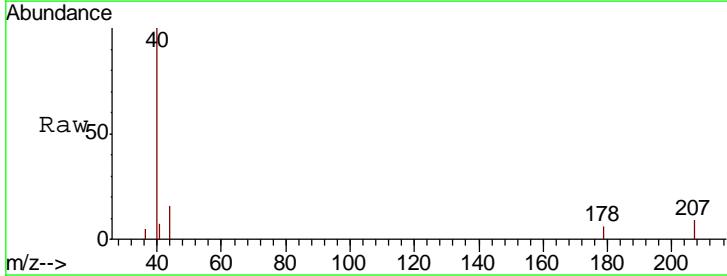
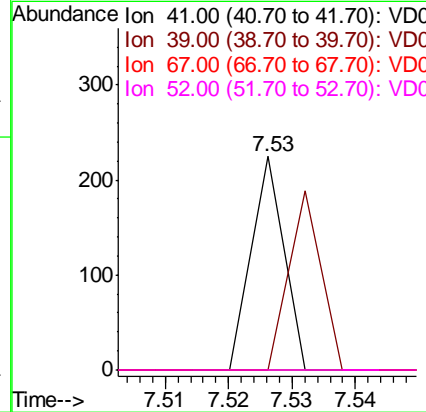
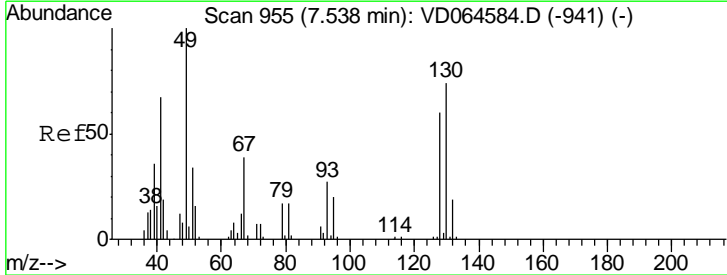
Instrument :
MSVOA_D
ClientSampleId :
LIED-BF001-02

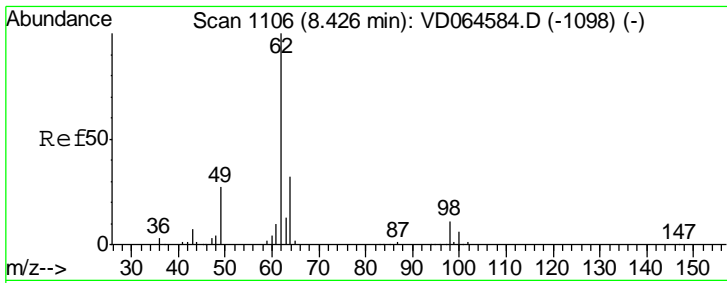
Tgt Ion: 78 Resp: 1154
Ion Ratio Lower Upper
78 100
77 0.0 19.9 29.9#



#41
Methacrylonitrile
Concen: 2.751 ug/l
RT: 7.53 min Scan# 953
Delta R.T. -0.01 min
Lab File: VD064624.D
Acq: 27 Dec 2019 04:27

Tgt Ion: 41 Resp: 79
Ion Ratio Lower Upper
41 100
39 84.8 46.7 70.1#
67 0.0 52.5 78.7#
52 0.0 24.1 36.1#

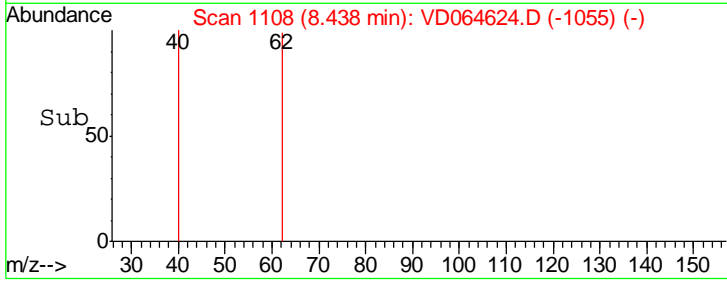
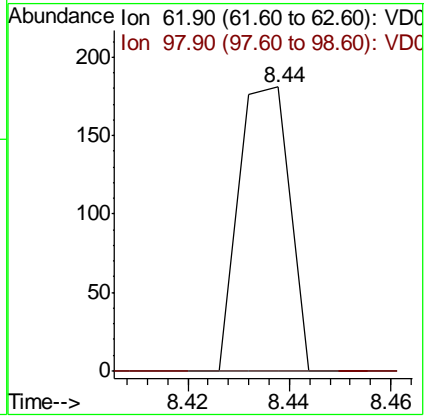
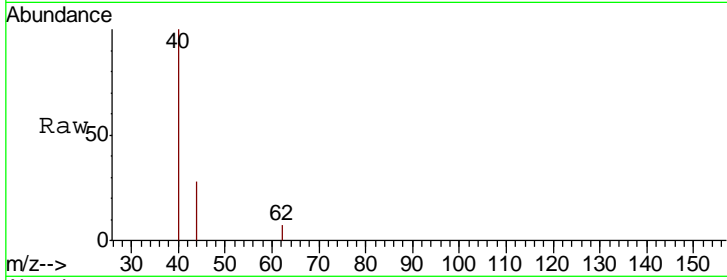




#42
 1,2-Dichloroethane
 Concen: 1.268 ug/l
 RT: 8.44 min Scan# 1108
 Delta R.T. 0.01 min
 Lab File: VD064624.D
 Acq: 27 Dec 2019 04:27

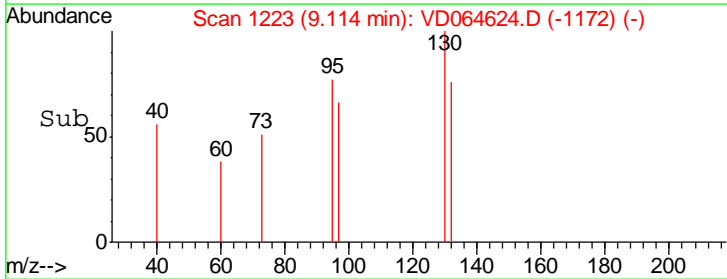
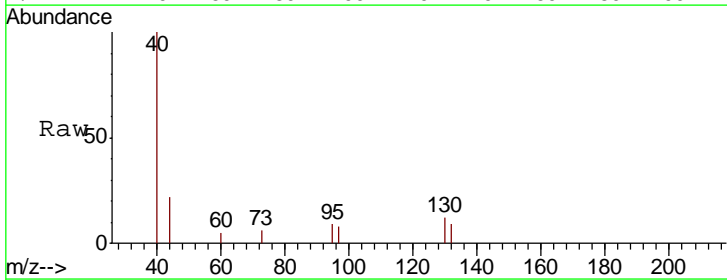
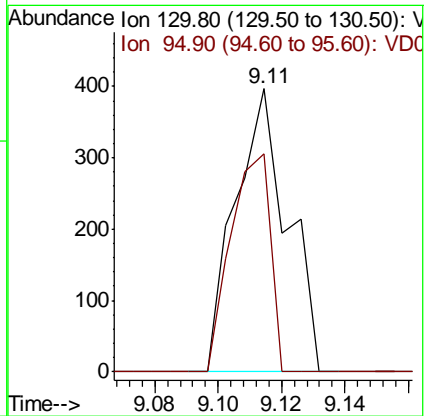
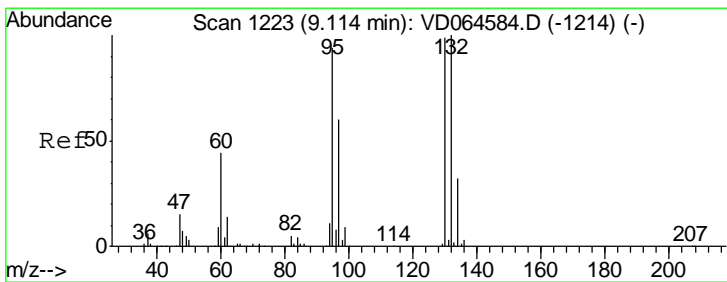
Instrument : MSVOA_D
 ClientSampled : LIED-BF001-02

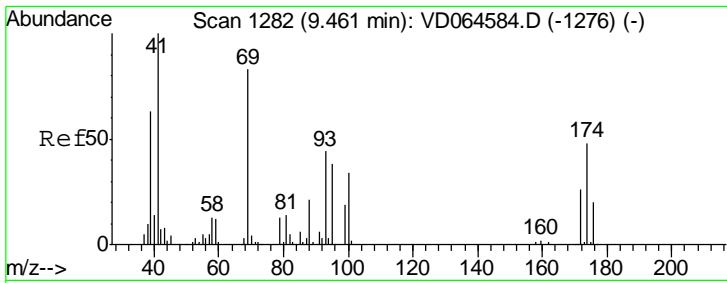
Tgt Ion	Resp	Lower	Upper
62	126		
98	0.0	0.0	20.0



#44
 Trichloroethene
 Concen: 4.484 ug/l
 RT: 9.11 min Scan# 1223
 Delta R.T. 0.00 min
 Lab File: VD064624.D
 Acq: 27 Dec 2019 04:27

Tgt Ion	Resp	Lower	Upper
130	453		
95	76.8	0.0	190.2

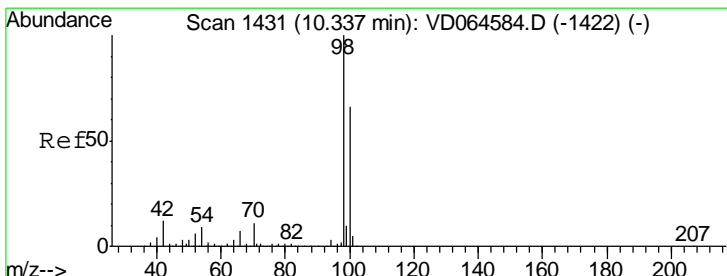
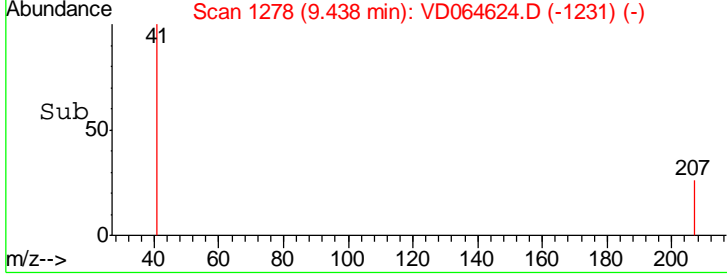
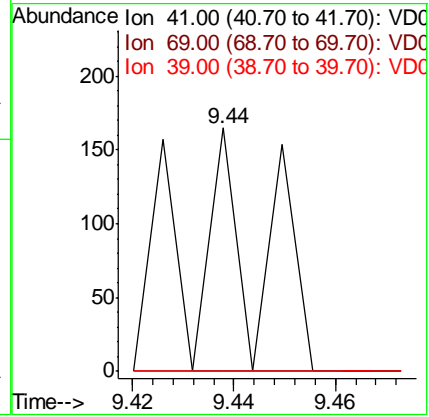
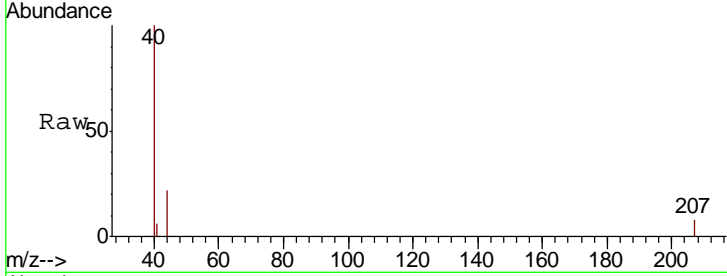




#48
 Methyl methacrylate
 Concen: 2.436 ug/l
 RT: 9.44 min Scan# 1278
 Delta R.T. -0.02 min
 Lab File: VD064624.D
 Acq: 27 Dec 2019 04:27

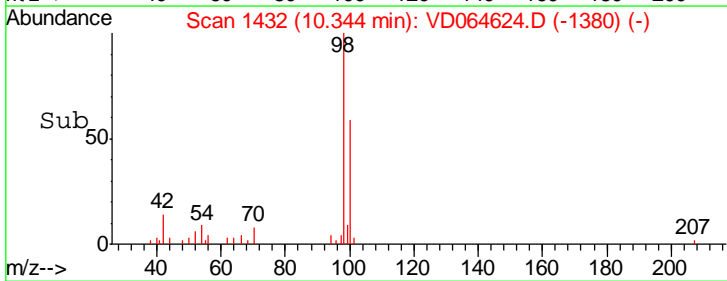
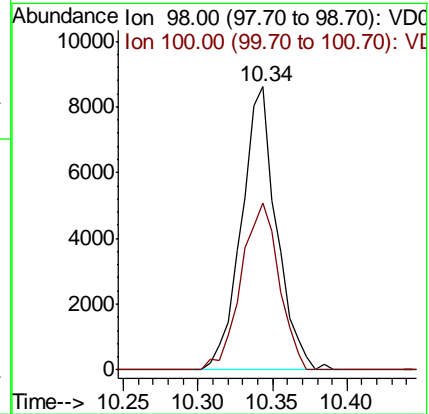
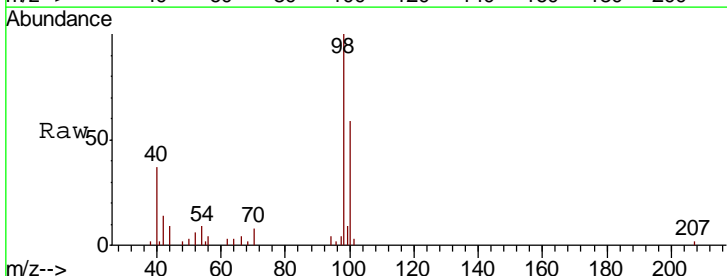
Instrument : MSVOA_D
 ClientSampled : LIED-BF001-02

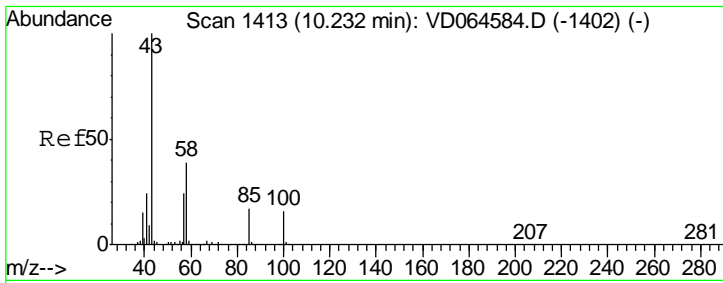
Tgt Ion	Resp	Lower	Upper
41	100		
69	0.0	63.0	94.6#
39	0.0	47.4	71.2#



#50
 Toluene-d8
 Concen: 45.667 ug/l
 RT: 10.34 min Scan# 1432
 Delta R.T. 0.01 min
 Lab File: VD064624.D
 Acq: 27 Dec 2019 04:27

Tgt Ion	Resp	Lower	Upper
98	100		
100	63.4	51.7	77.5

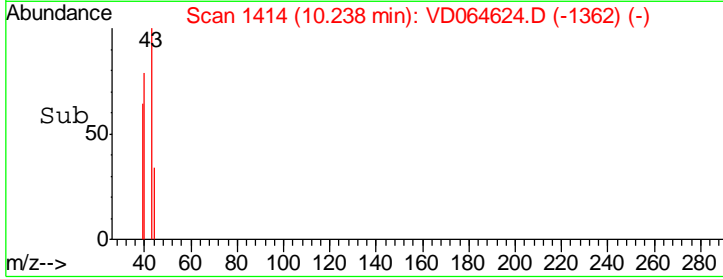
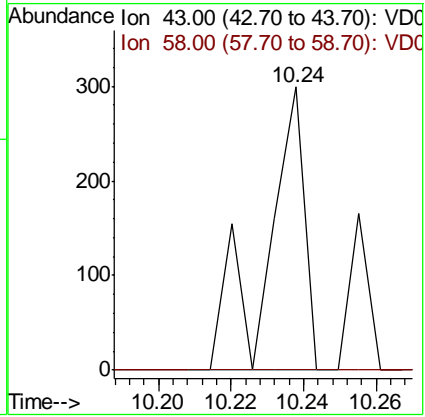
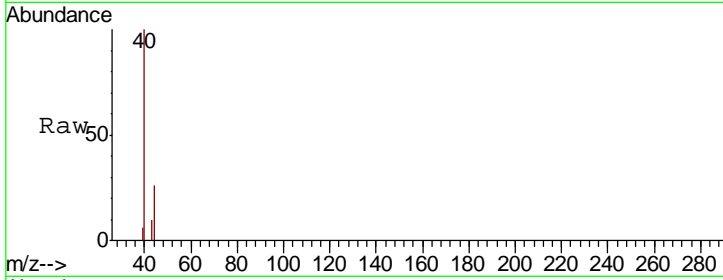




#51
 4-Methyl-2-Pentanone
 Concen: 4.457 ug/l
 RT: 10.24 min Scan# 1414
 Delta R.T. 0.01 min
 Lab File: VD064624.D
 Acq: 27 Dec 2019 04:27

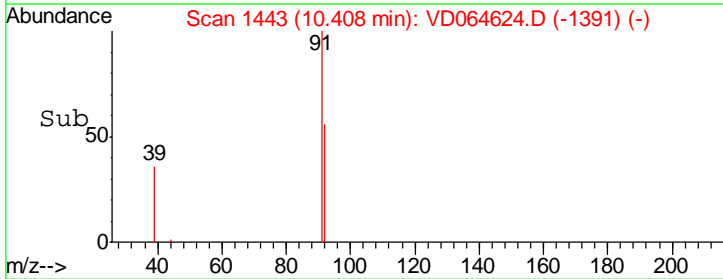
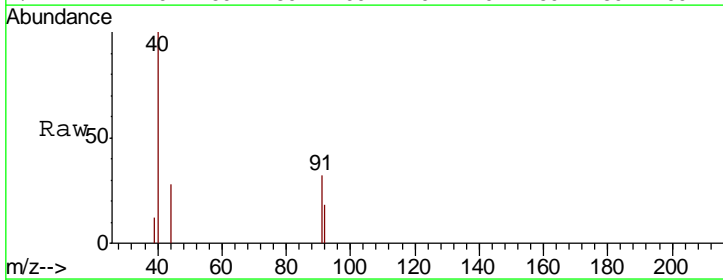
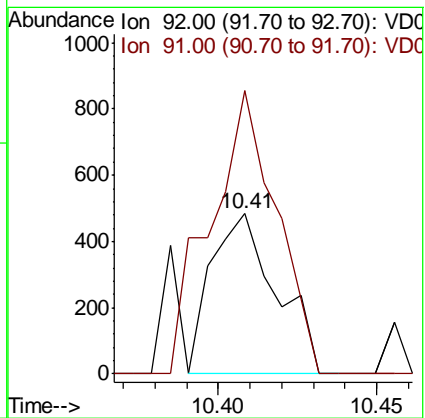
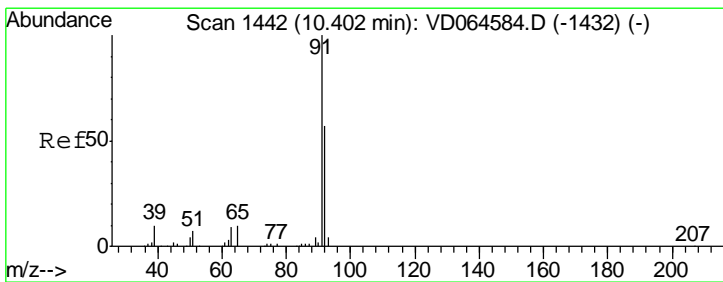
Instrument : MSVOA_D
 ClientSampled : LIED-BF001-02

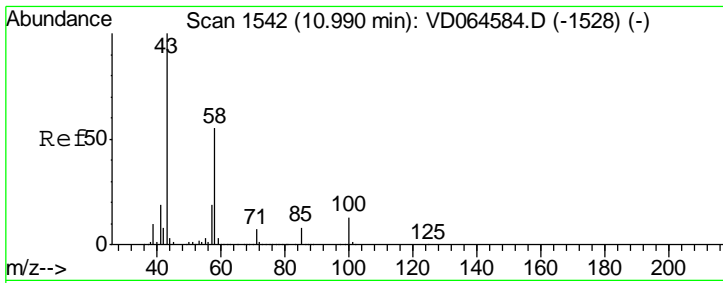
Tgt Ion	Resp	Lower	Upper
43	100		
58	0.0	30.2	45.2#



#52
 Toluene
 Concen: 3.054 ug/l
 RT: 10.41 min Scan# 1443
 Delta R.T. 0.01 min
 Lab File: VD064624.D
 Acq: 27 Dec 2019 04:27

Tgt Ion	Resp	Lower	Upper
92	100		
91	179.2	138.7	208.1

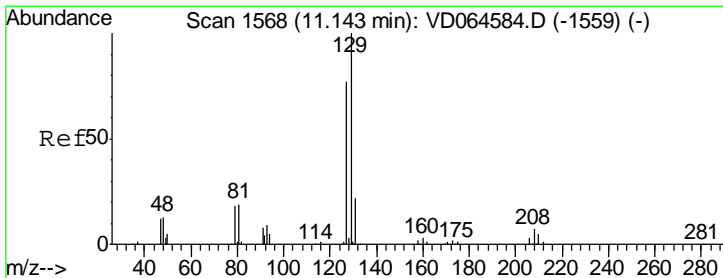
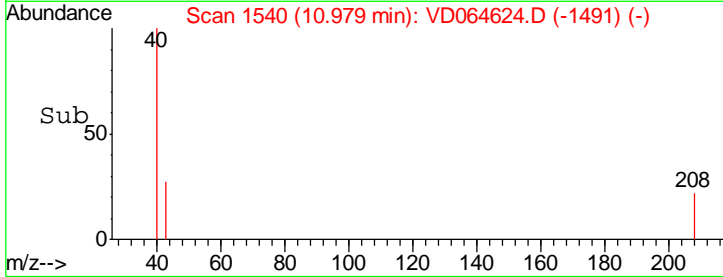
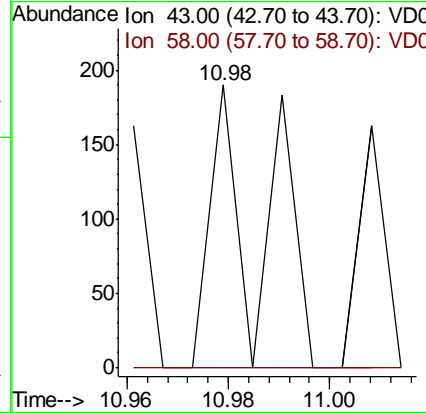
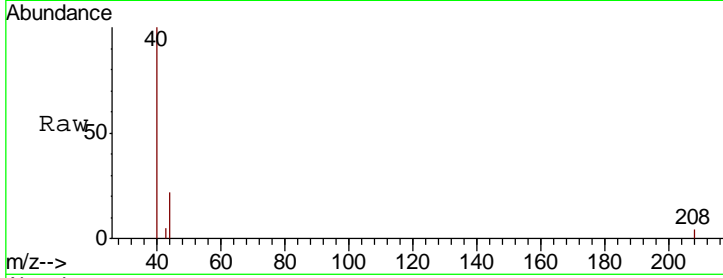




#59
 2-Hexanone
 Concen: 3.994 ug/l
 RT: 10.98 min Scan# 1540
 Delta R.T. -0.01 min
 Lab File: VD064624.D
 Acq: 27 Dec 2019 04:27

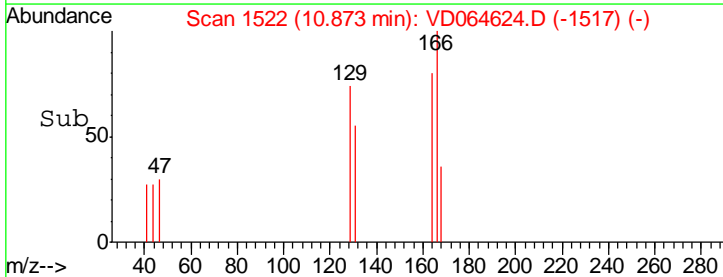
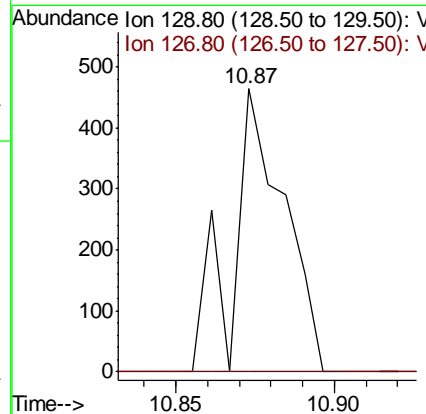
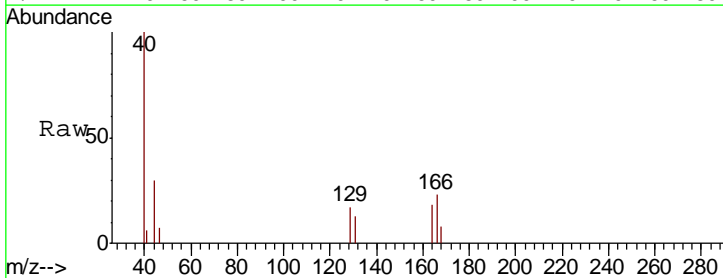
Instrument : MSVOA_D
 ClientSampled : LIED-BF001-02

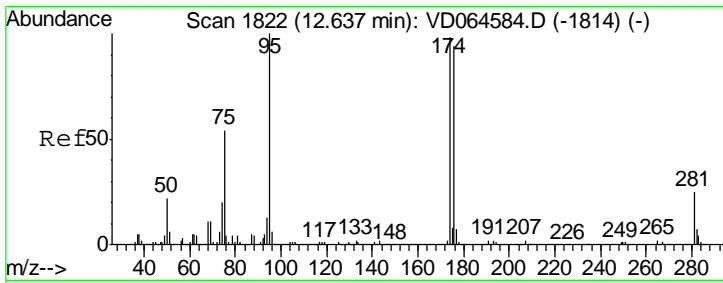
Tgt Ion	Resp	Lower	Upper
43	100		
58	0.0	26.4	79.0#



#60
 Dibromochloromethane
 Concen: 6.153 ug/l
 RT: 10.87 min Scan# 1522
 Delta R.T. -0.27 min
 Lab File: VD064624.D
 Acq: 27 Dec 2019 04:27

Tgt Ion	Resp	Lower	Upper
129	100		
127	0.0	38.4	115.2#

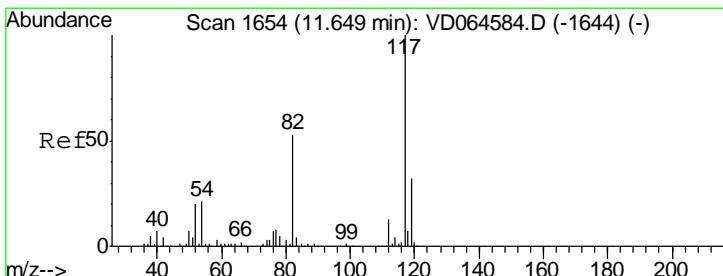
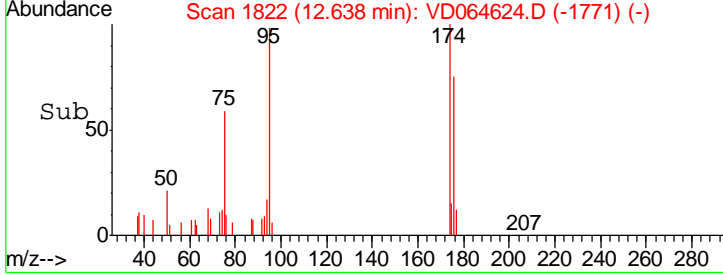
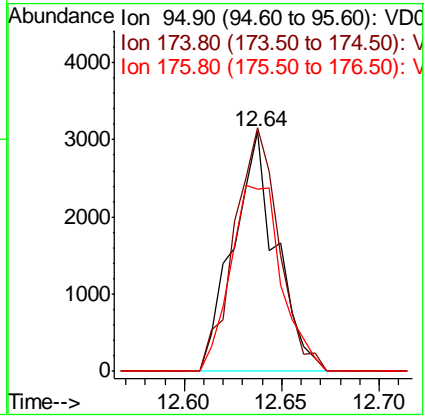
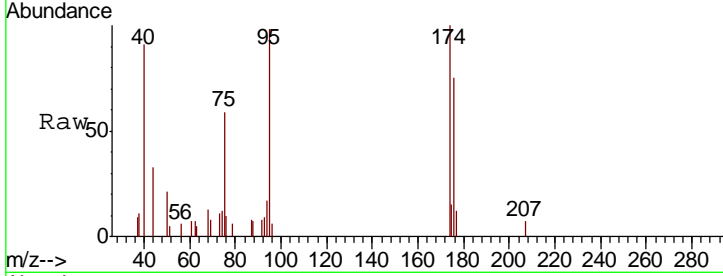




#62
 4-Bromofluorobenzene
 Concen: 48.832 ug/l
 RT: 12.64 min Scan# 1822
 Delta R.T. 0.00 min
 Lab File: VD064624.D
 Acq: 27 Dec 2019 04:27

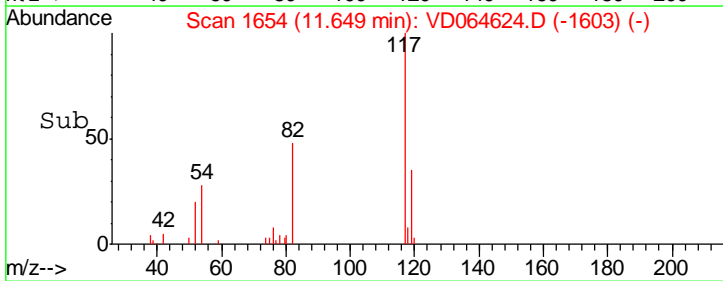
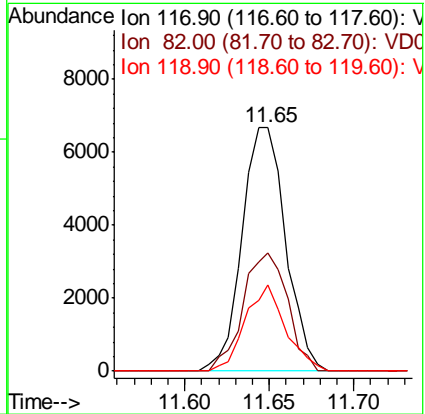
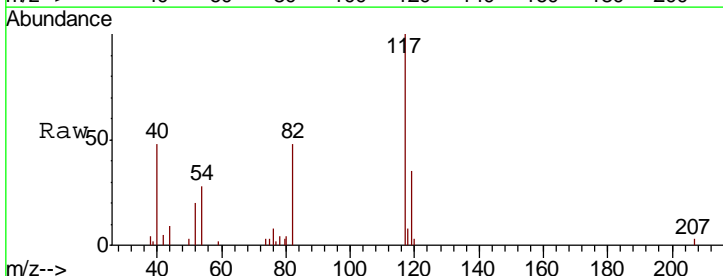
Instrument : MSVOA_D
 ClientSampled : LIED-BF001-02

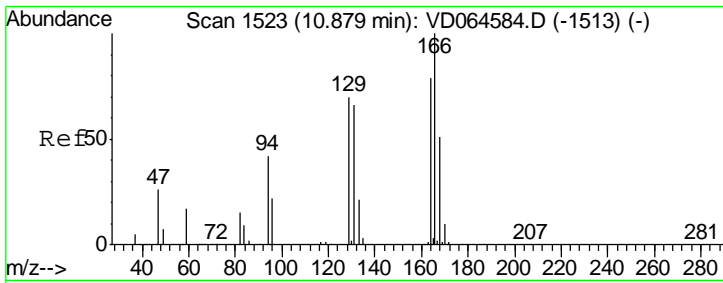
Tgt Ion	Resp	Lower	Upper
95	4749		
95	100		
174	104.9	0.0	193.2
176	91.3	0.0	184.2



#63
 Chlorobenzene-d5
 Concen: 50.000 ug/l
 RT: 11.65 min Scan# 1654
 Delta R.T. 0.00 min
 Lab File: VD064624.D
 Acq: 27 Dec 2019 04:27

Tgt Ion	Resp	Lower	Upper
117	12012		
117	100		
82	48.5	42.2	63.4
119	35.4	26.0	39.0

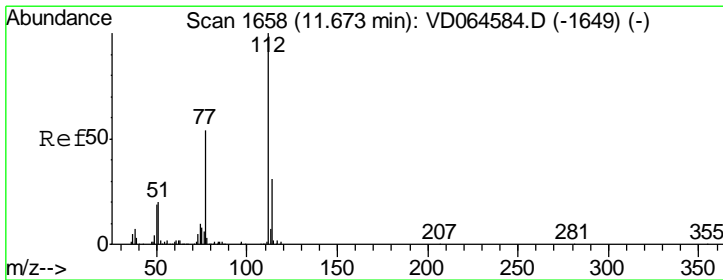
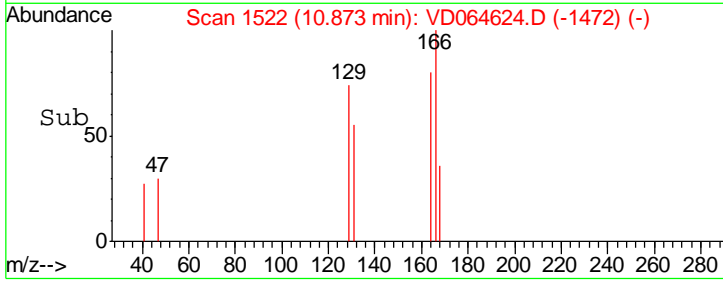
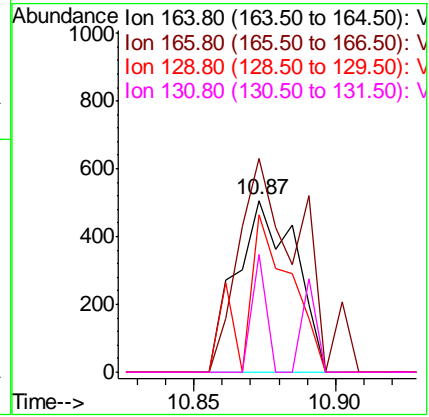
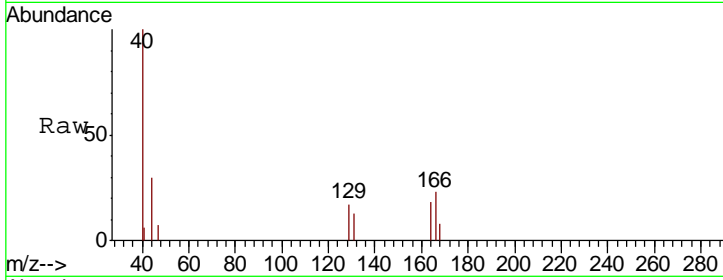




#64
 Tetrachloroethene
 Concen: 7.943 ug/l
 RT: 10.87 min Scan# 1522
 Delta R.T. -0.01 min
 Lab File: VD064624.D
 Acq: 27 Dec 2019 04:27

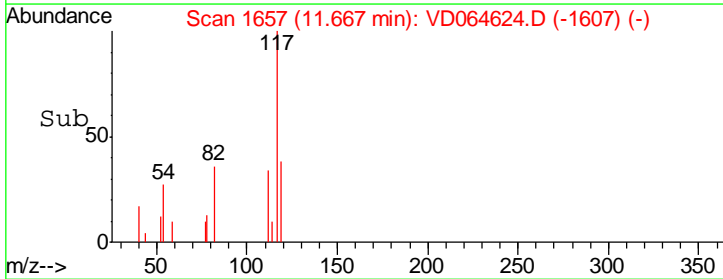
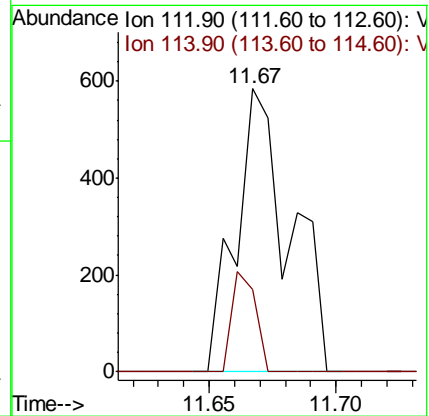
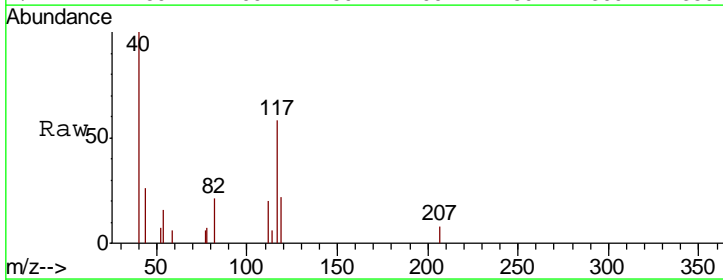
Instrument : MSVOA_D
 ClientSampleId : LIED-BF001-02

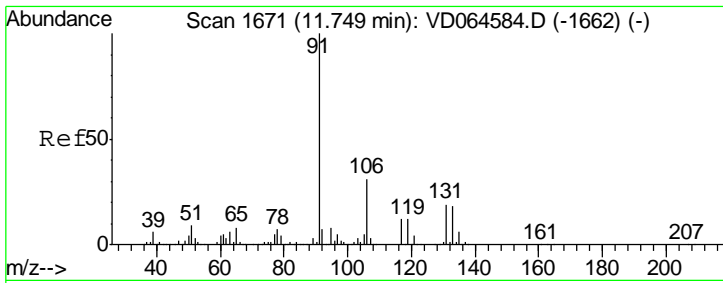
Tgt Ion	Resp	Lower	Upper
164	100		
166	124.5	101.3	151.9
129	91.7	70.5	105.7
131	69.0	66.6	99.8



#65
 Chlorobenzene
 Concen: 3.442 ug/l
 RT: 11.67 min Scan# 1657
 Delta R.T. -0.01 min
 Lab File: VD064624.D
 Acq: 27 Dec 2019 04:27

Tgt Ion	Resp	Lower	Upper
112	100		
114	28.9	24.8	37.2

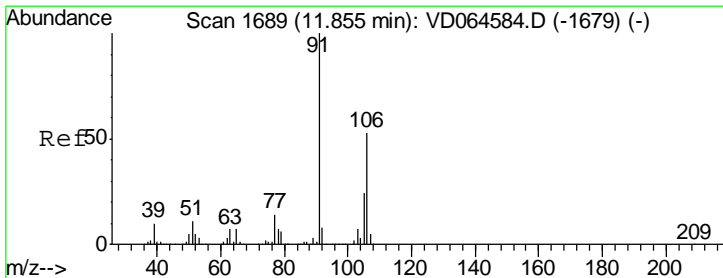
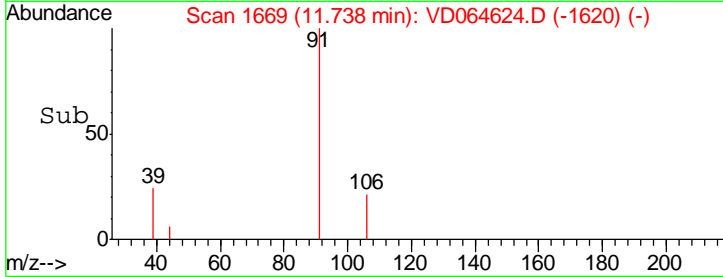
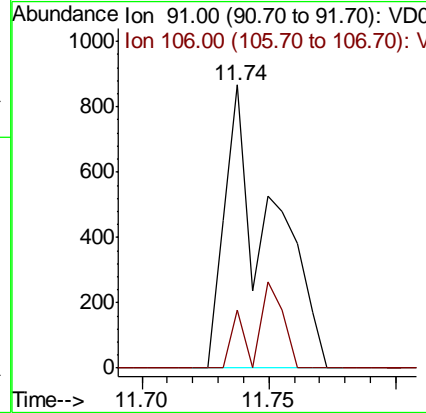
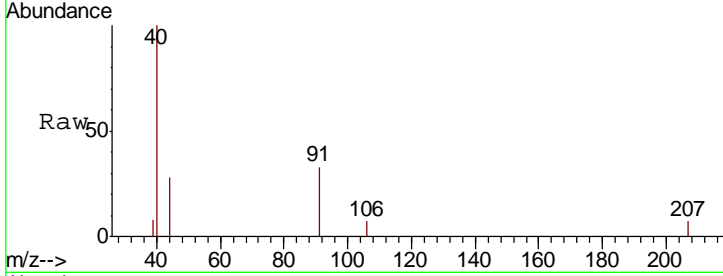




#67
 Ethyl Benzene
 Concen: 2.429 ug/l
 RT: 11.74 min Scan# 1669
 Delta R.T. -0.01 min
 Lab File: VD064624.D
 Acq: 27 Dec 2019 04:27

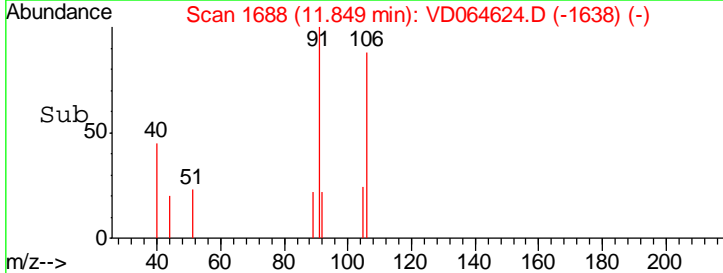
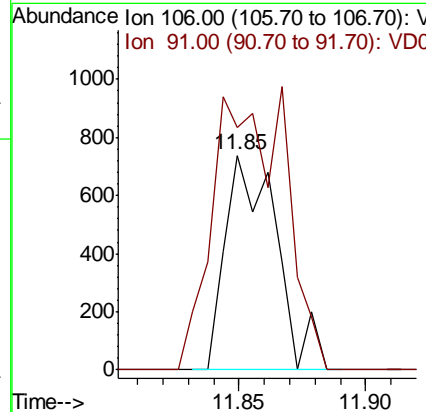
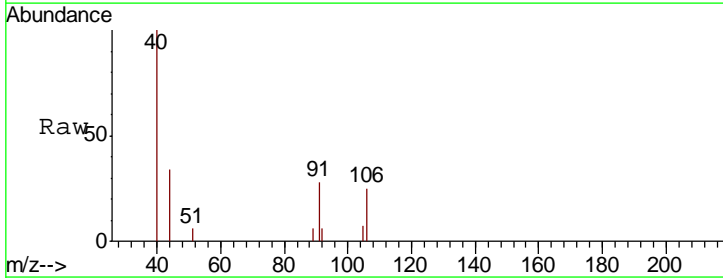
Instrument : MSVOA_D
 ClientSampled : LIED-BF001-02

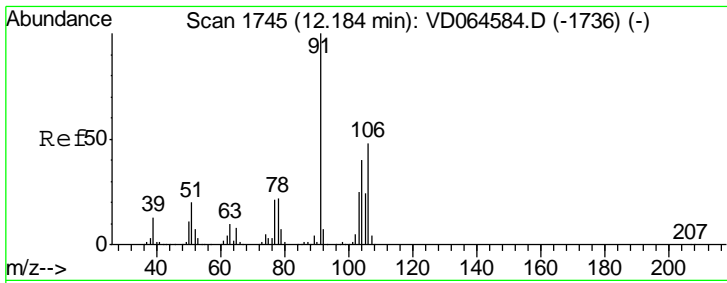
Tgt Ion: 91 Resp: 1099
 Ion Ratio Lower Upper
 91 100
 106 20.6 24.6 36.8#



#68
 m/p-Xylenes
 Concen: 5.943 ug/l
 RT: 11.85 min Scan# 1688
 Delta R.T. -0.01 min
 Lab File: VD064624.D
 Acq: 27 Dec 2019 04:27

Tgt Ion: 106 Resp: 1038
 Ion Ratio Lower Upper
 106 100
 91 181.2 156.3 234.5

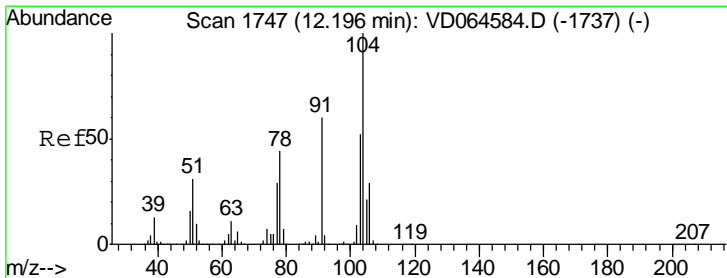
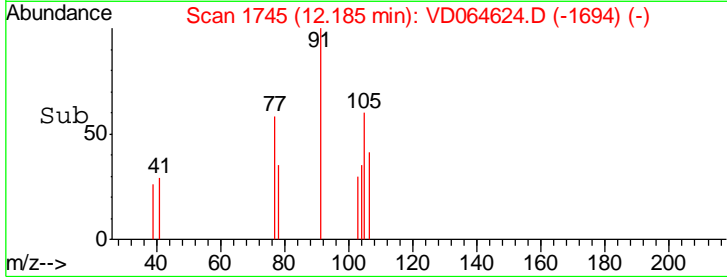
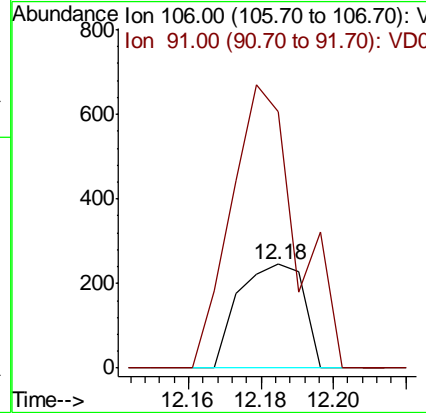
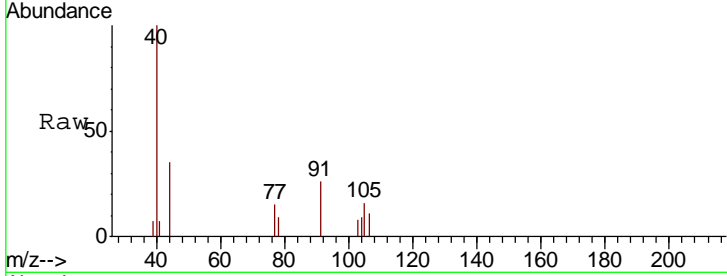




#69
 o-Xylene
 Concen: 1.959 ug/l
 RT: 12.18 min Scan# 1745
 Delta R.T. 0.00 min
 Lab File: VD064624.D
 Acq: 27 Dec 2019 04:27

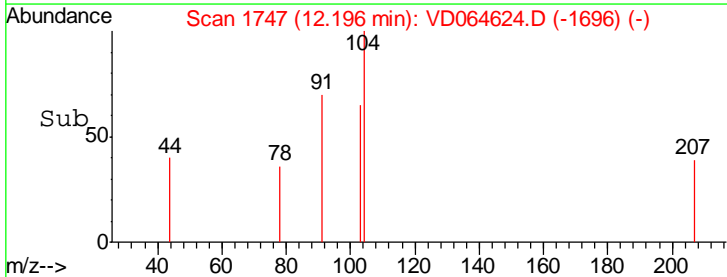
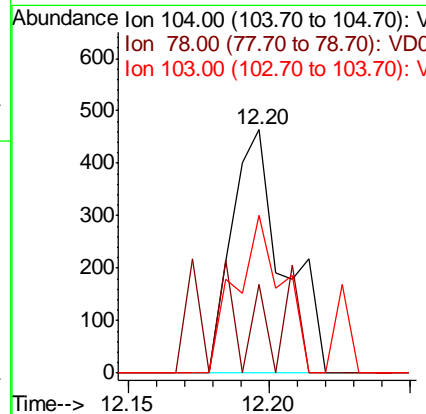
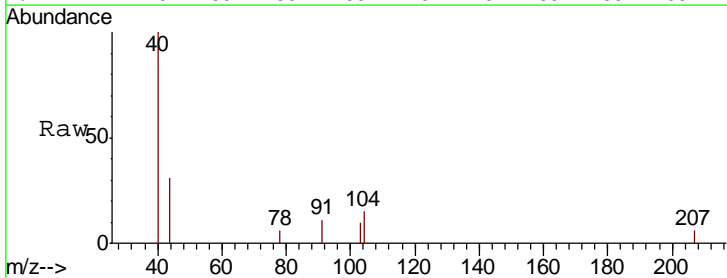
Instrument :
 MSVOA_D
 Client Sampled :
 LIED-BF001-02

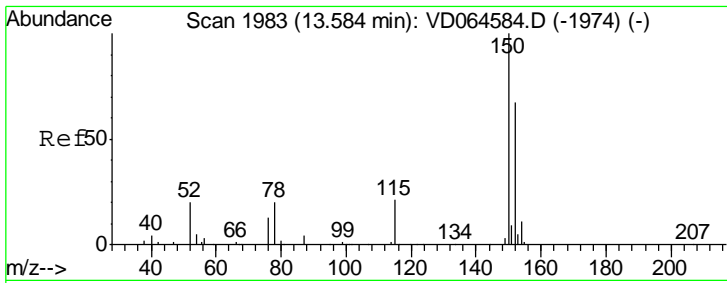
Tgt Ion: 106 Resp: 309
 Ion Ratio Lower Upper
 106 100
 91 274.8 104.8 314.4



#70
 Styrene
 Concen: 2.123 ug/l
 RT: 12.20 min Scan# 1747
 Delta R.T. 0.00 min
 Lab File: VD064624.D
 Acq: 27 Dec 2019 04:27

Tgt Ion: 104 Resp: 588
 Ion Ratio Lower Upper
 104 100
 78 0.0 38.2 57.2#
 103 59.0 44.6 67.0

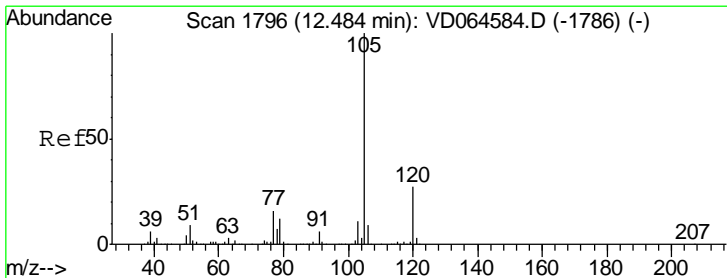
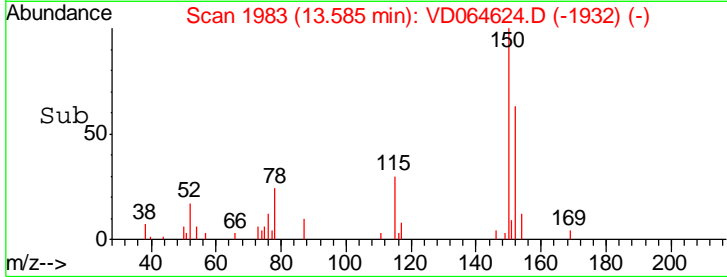
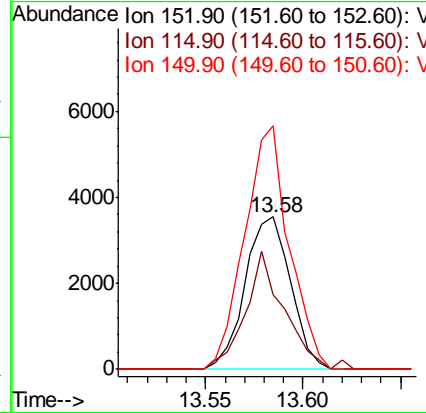
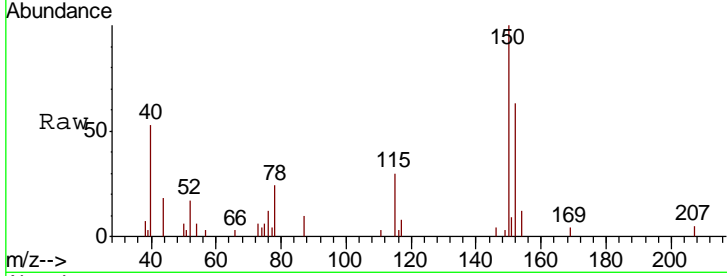




#72
 1,4-Dichlorobenzene-d4
 Concen: 50.000 ug/l
 RT: 13.58 min Scan# 1983
 Delta R.T. 0.00 min
 Lab File: VD064624.D
 Acq: 27 Dec 2019 04:27

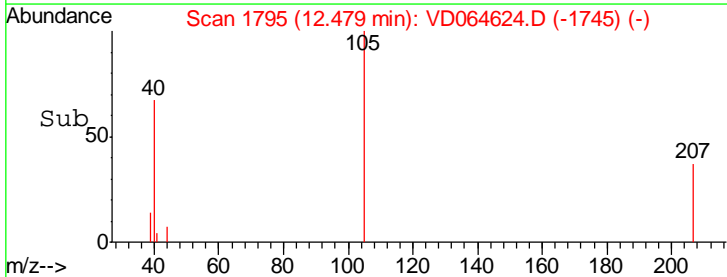
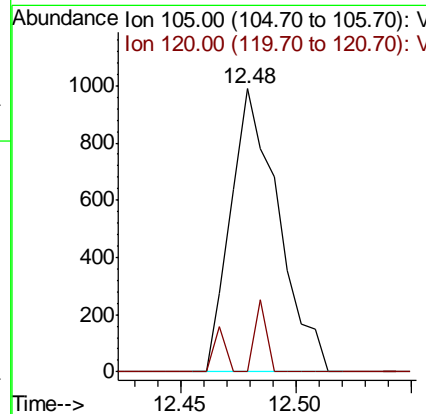
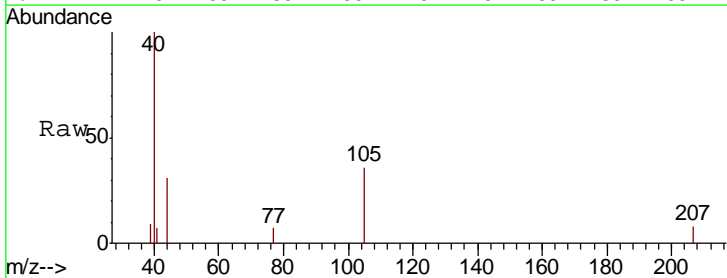
Instrument :
 MSVOA_D
 ClientSampled :
 LIED-BF001-02

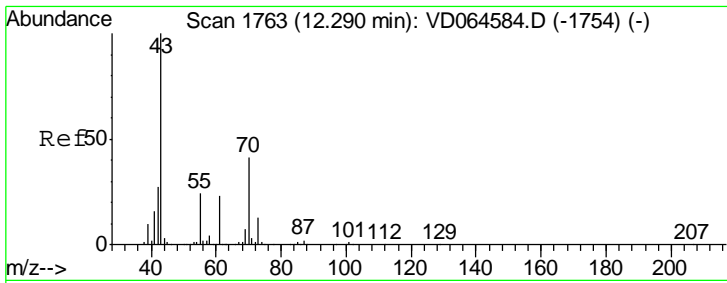
Tgt Ion	Resp	Lower	Upper
152	100		
115	66.4	27.8	83.4
150	156.1	0.0	351.4



#73
 Isopropylbenzene
 Concen: 3.479 ug/l
 RT: 12.48 min Scan# 1795
 Delta R.T. -0.01 min
 Lab File: VD064624.D
 Acq: 27 Dec 2019 04:27

Tgt Ion	Resp	Lower	Upper
105	100		
120	6.3	13.5	40.5#

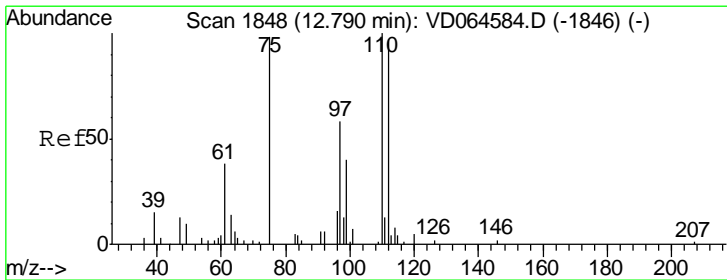
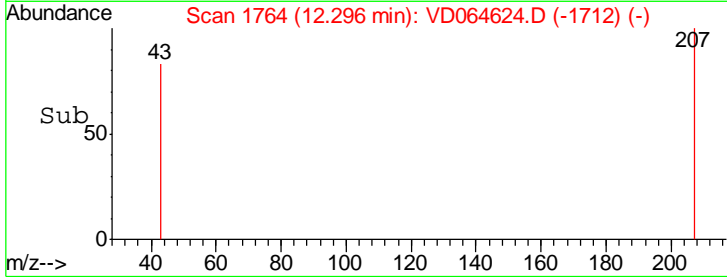
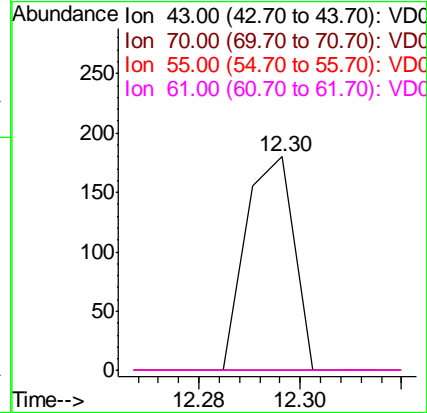
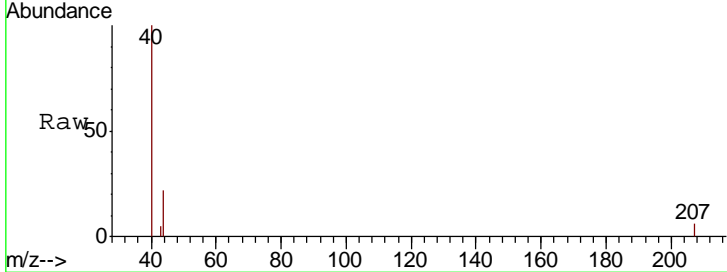




#74
 N-amyl acetate
 Concen: 1.349 ug/l
 RT: 12.30 min Scan# 1764
 Delta R.T. 0.01 min
 Lab File: VD064624.D
 Acq: 27 Dec 2019 04:27

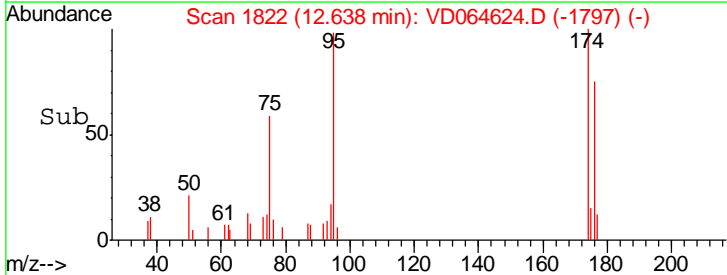
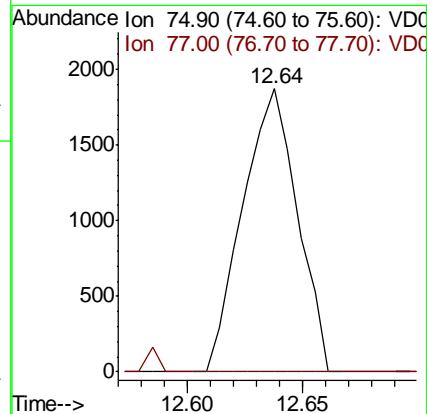
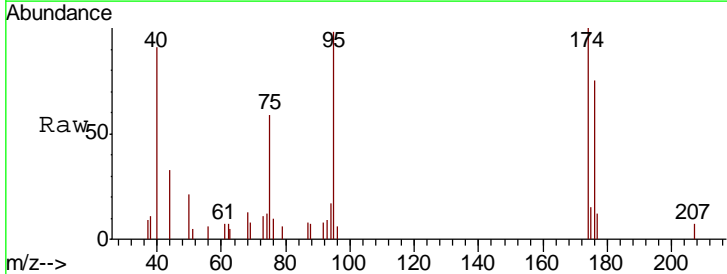
Instrument :
 MSVOA_D
 ClientSampled :
 LIED-BF001-02

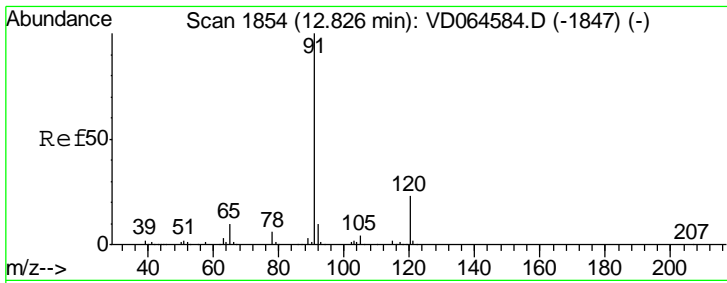
Tgt Ion	Resp	Lower	Upper
43	100		
70	0.0	33.4	50.0#
55	0.0	19.4	29.0#
61	0.0	18.3	27.5#



#76
 1,2,3-Trichloropropane
 Concen: 67.983 ug/l
 RT: 12.64 min Scan# 1822
 Delta R.T. -0.15 min
 Lab File: VD064624.D
 Acq: 27 Dec 2019 04:27

Tgt Ion	Resp	Lower	Upper
75	100		
77	0.0	0.0	0.0

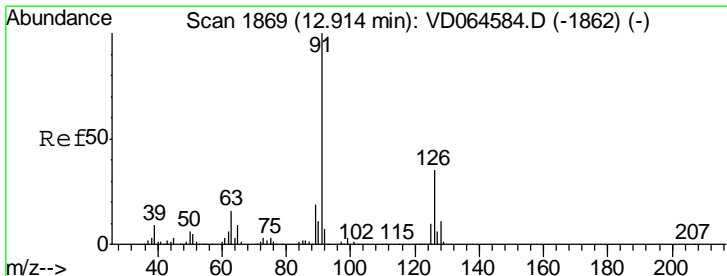
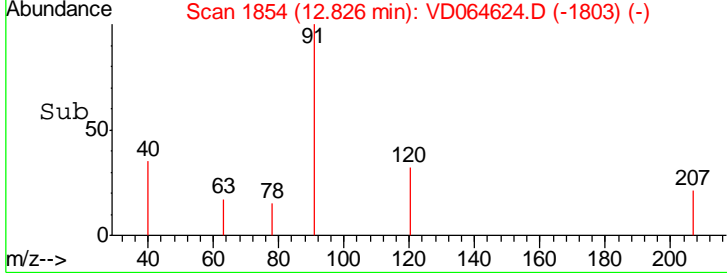
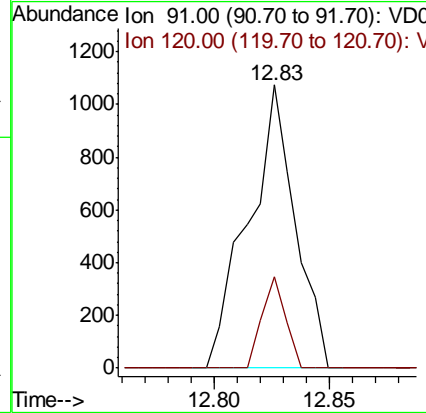
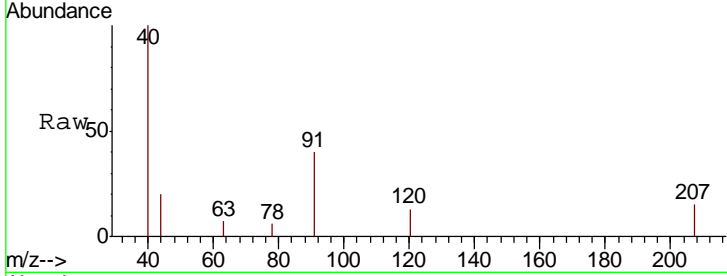




#78
 n-propylbenzene
 Concen: 3.170 ug/l
 RT: 12.83 min Scan# 1854
 Delta R.T. 0.00 min
 Lab File: VD064624.D
 Acq: 27 Dec 2019 04:27

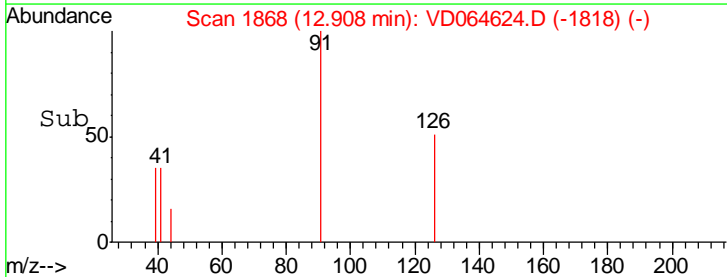
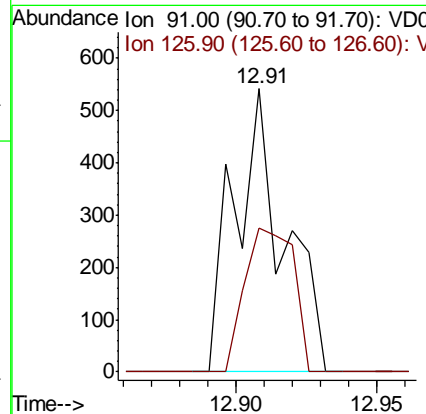
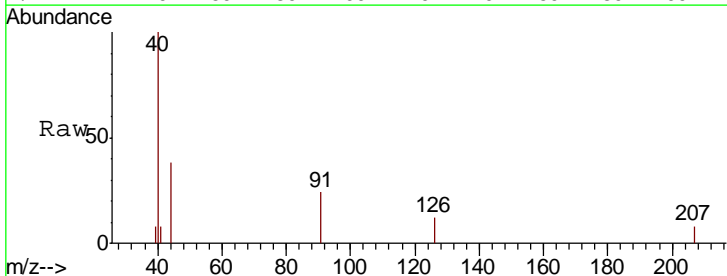
Instrument :
 MSVOA_D
 ClientSampled :
 LIED-BF001-02

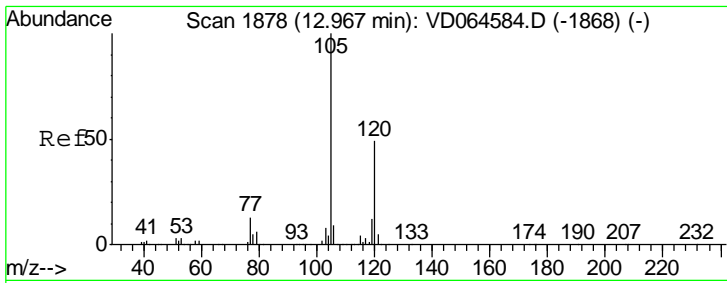
Tgt Ion: 91 Resp: 1514
 Ion Ratio Lower Upper
 91 100
 120 16.4 11.9 35.9



#79
 2-Chlorotoluene
 Concen: 2.508 ug/l
 RT: 12.91 min Scan# 1868
 Delta R.T. -0.01 min
 Lab File: VD064624.D
 Acq: 27 Dec 2019 04:27

Tgt Ion: 91 Resp: 658
 Ion Ratio Lower Upper
 91 100
 126 50.2 17.8 53.5

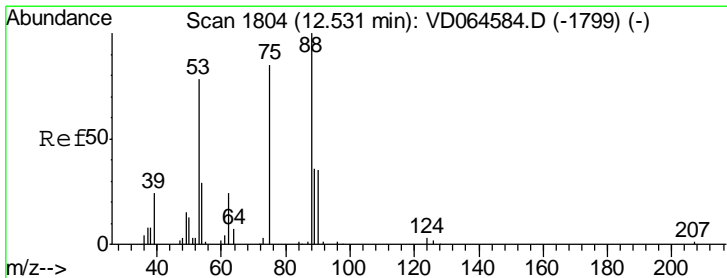
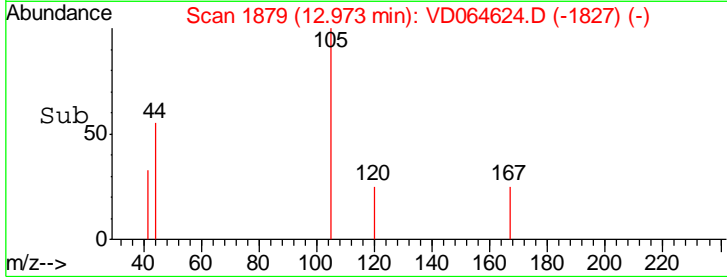
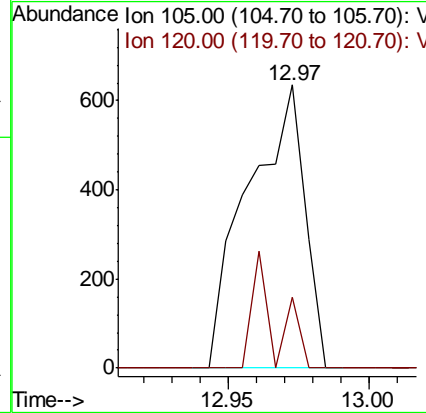
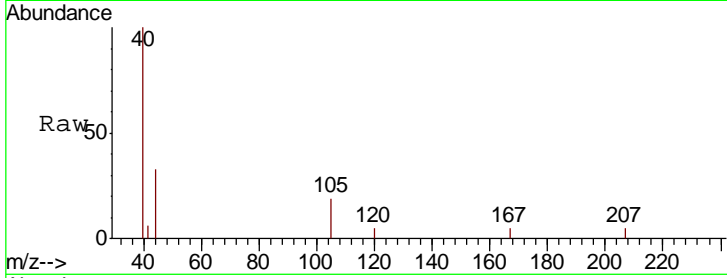




#80
 1,3,5-Trimethylbenzene
 Concen: 2.635 ug/l
 RT: 12.97 min Scan# 1879
 Delta R.T. 0.01 min
 Lab File: VD064624.D
 Acq: 27 Dec 2019 04:27

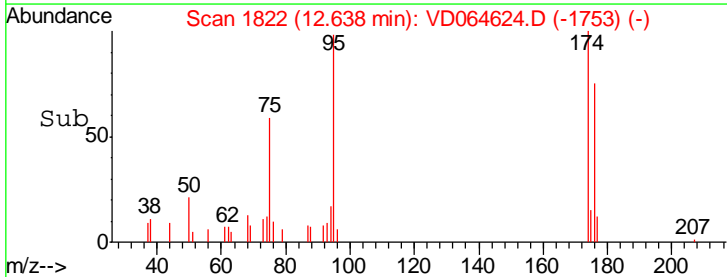
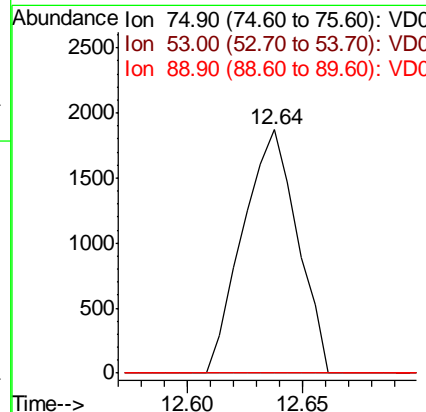
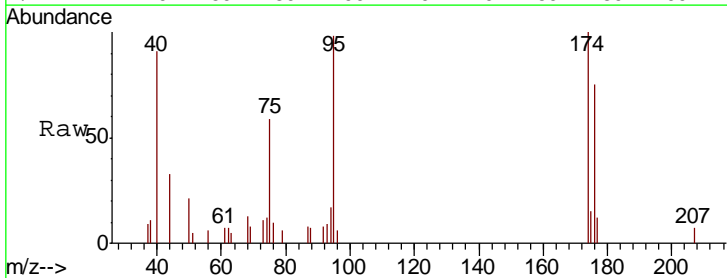
Instrument :
 MSVOA_D
 ClientSampleID :
 LIED-BF001-02

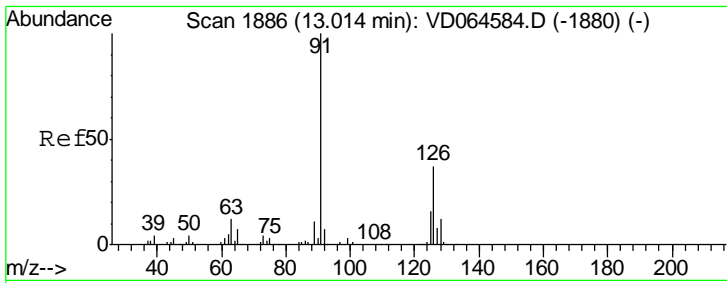
Tgt Ion: 105 Resp: 886
 Ion Ratio Lower Upper
 105 100
 120 16.8 25.0 75.0#



#81
 trans-1,4-Dichloro-2-butene
 Concen: 142.185 ug/l
 RT: 12.64 min Scan# 1822
 Delta R.T. 0.11 min
 Lab File: VD064624.D
 Acq: 27 Dec 2019 04:27

Tgt Ion: 75 Resp: 3075
 Ion Ratio Lower Upper
 75 100
 53 0.0 78.8 118.2#
 89 0.0 38.3 57.5#

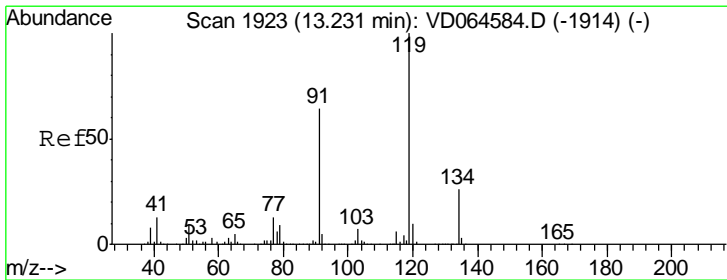
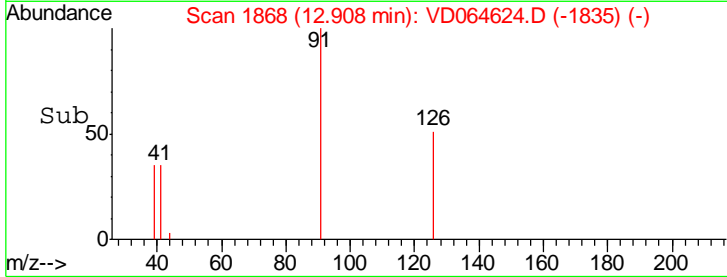
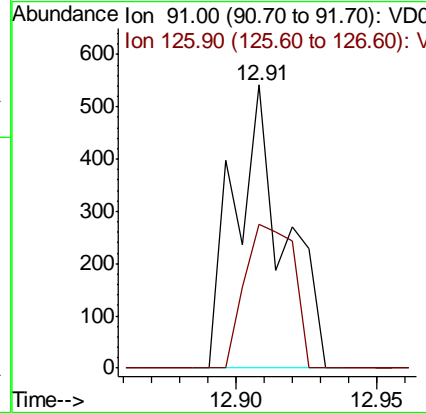
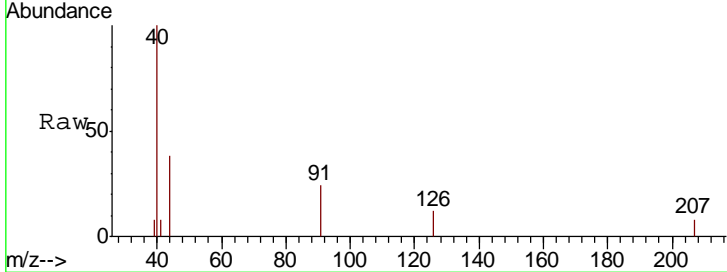




#82
 4-Chlorotoluene
 Concen: 2.357 ug/l
 RT: 12.91 min Scan# 1868
 Delta R.T. -0.11 min
 Lab File: VD064624.D
 Acq: 27 Dec 2019 04:27

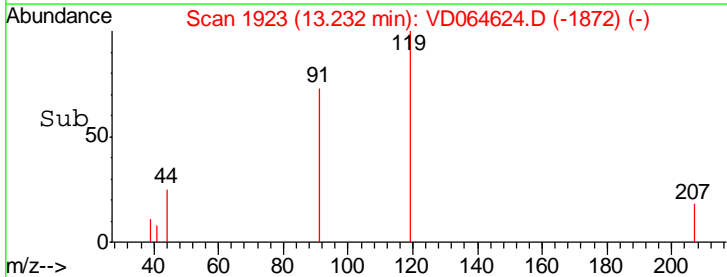
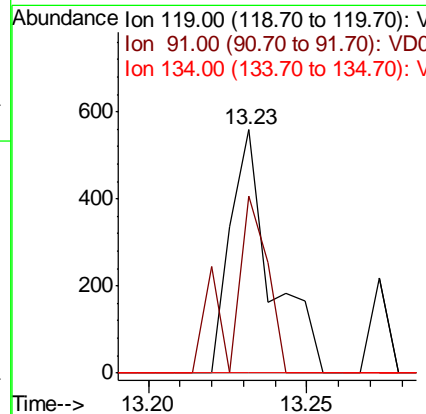
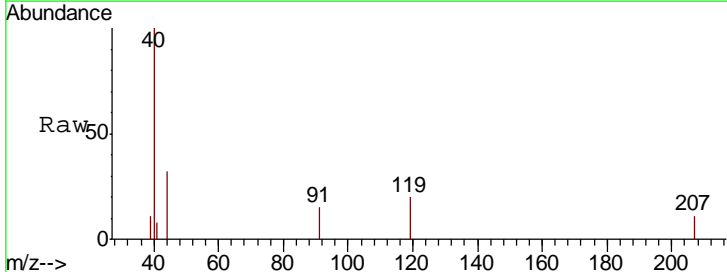
Instrument : MSVOA_D
 ClientSampled : LIED-BF001-02

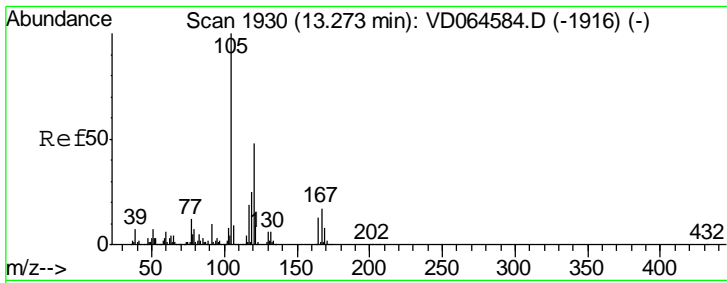
Tgt Ion:	91	Resp:	658
Ion Ratio	Lower	Upper	
91	100		
126	50.2	17.8	53.5



#83
 tert-Butylbenzene
 Concen: 1.699 ug/l
 RT: 13.23 min Scan# 1923
 Delta R.T. 0.00 min
 Lab File: VD064624.D
 Acq: 27 Dec 2019 04:27

Tgt Ion:	119	Resp:	496
Ion Ratio	Lower	Upper	
119	100		
91	64.5	30.8	92.4
134	0.0	12.8	38.3#

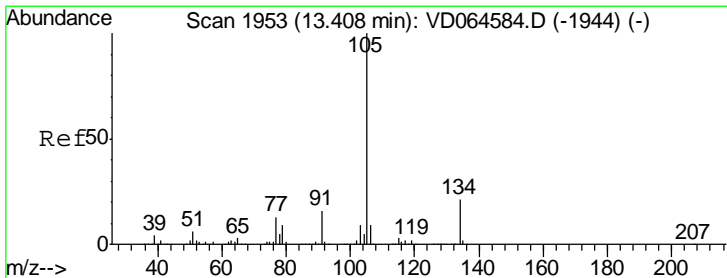
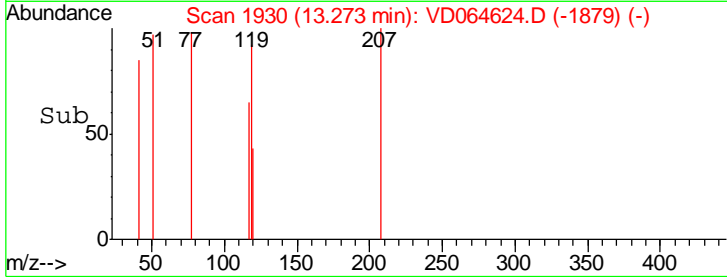
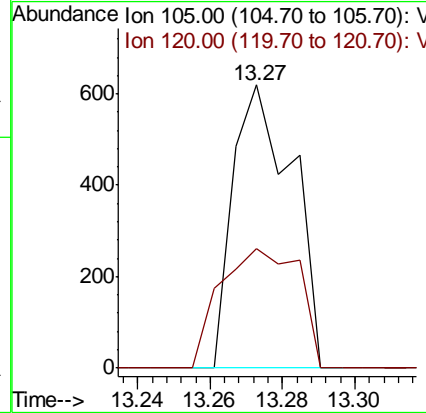
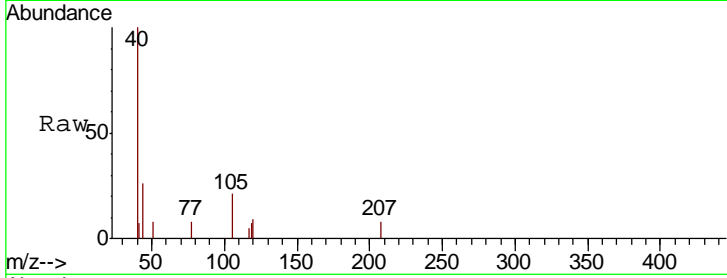




#84
 1,2,4-Trimethylbenzene
 Concen: 2.102 ug/l
 RT: 13.27 min Scan# 1930
 Delta R.T. 0.00 min
 Lab File: VD064624.D
 Acq: 27 Dec 2019 04:27

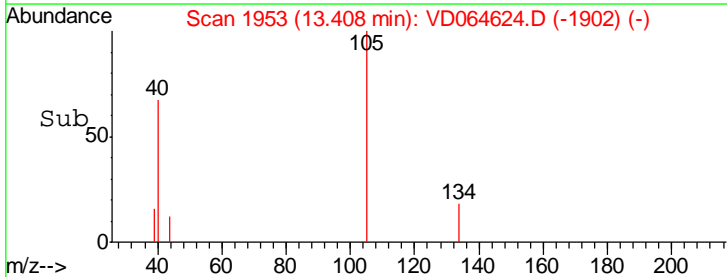
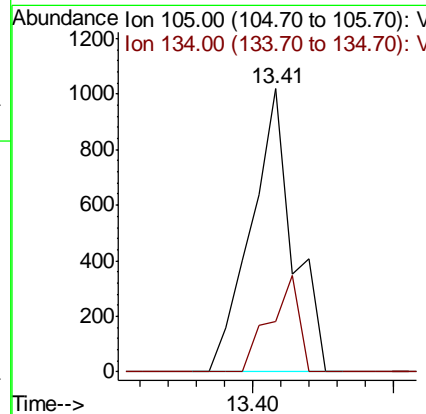
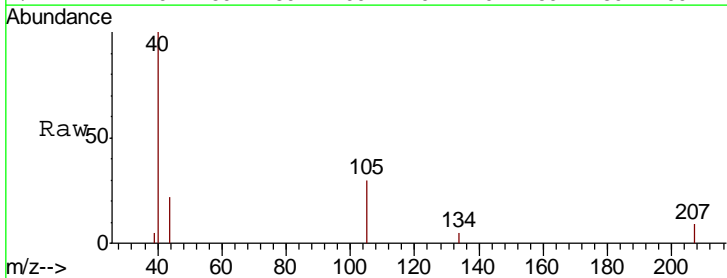
Instrument :
 MSVOA_D
 ClientSampleId :
 LIED-BF001-02

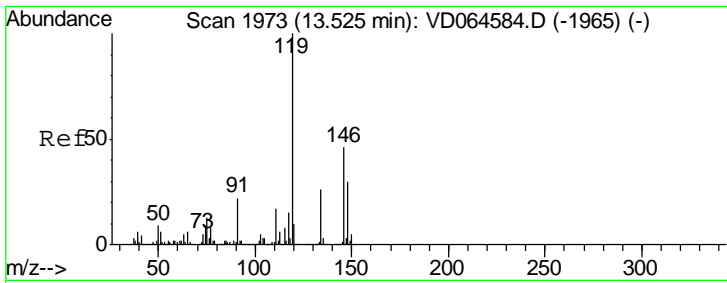
Tgt Ion:105 Resp: 704
 Ion Ratio Lower Upper
 105 100
 120 56.1 23.8 71.2



#85
 sec-Butylbenzene
 Concen: 2.623 ug/l
 RT: 13.41 min Scan# 1953
 Delta R.T. 0.00 min
 Lab File: VD064624.D
 Acq: 27 Dec 2019 04:27

Tgt Ion:105 Resp: 1050
 Ion Ratio Lower Upper
 105 100
 134 23.4 10.6 31.8

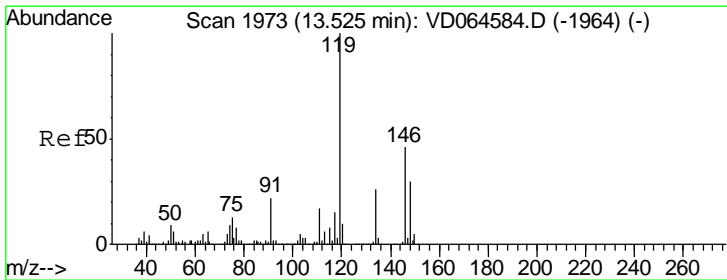
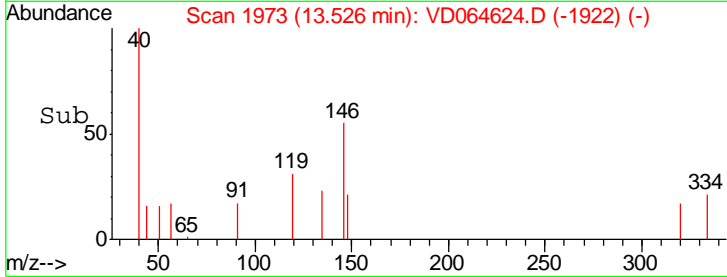
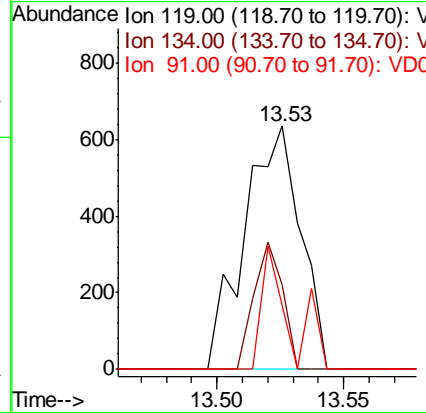
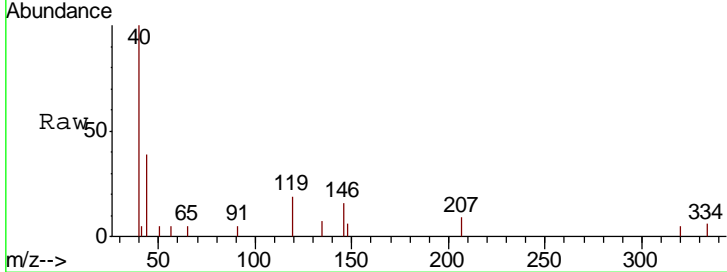




#86
 p-Isopropyltoluene
 Concen: 2.574 ug/l
 RT: 13.53 min Scan# 1973
 Delta R.T. 0.00 min
 Lab File: VD064624.D
 Acq: 27 Dec 2019 04:27

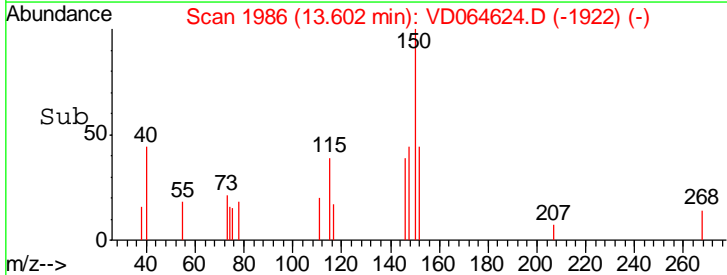
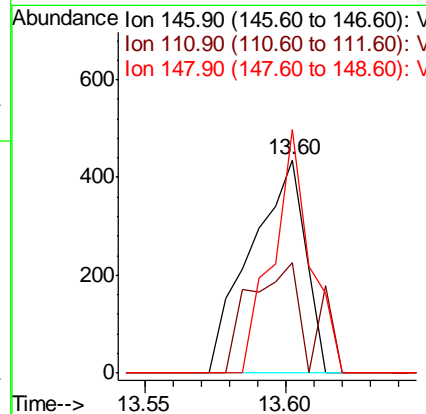
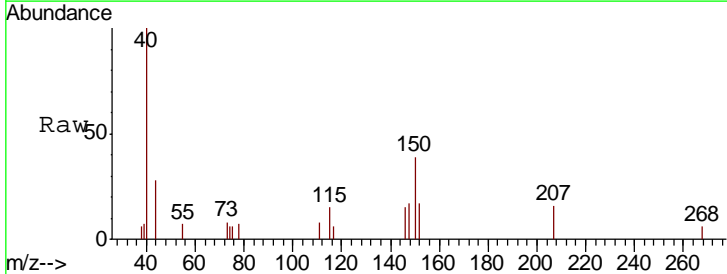
Instrument :
 MSVOA_D
 ClientSampled :
 LIED-BF001-02

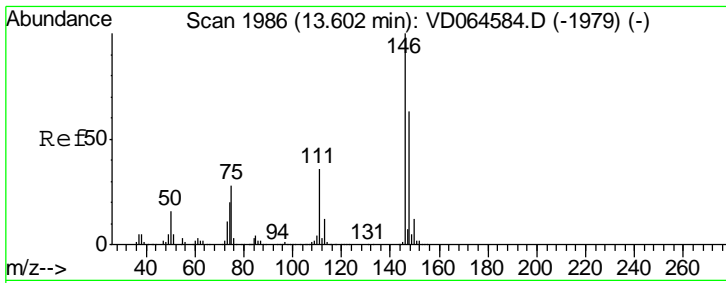
Tgt Ion	Resp	Lower	Upper
119	100		
134	26.4	13.4	40.1
91	17.6	11.2	33.6



#87
 1,3-Dichlorobenzene
 Concen: 3.041 ug/l
 RT: 13.60 min Scan# 1986
 Delta R.T. 0.08 min
 Lab File: VD064624.D
 Acq: 27 Dec 2019 04:27

Tgt Ion	Resp	Lower	Upper
146	100		
111	56.1	18.8	56.4
148	78.6	32.5	97.5

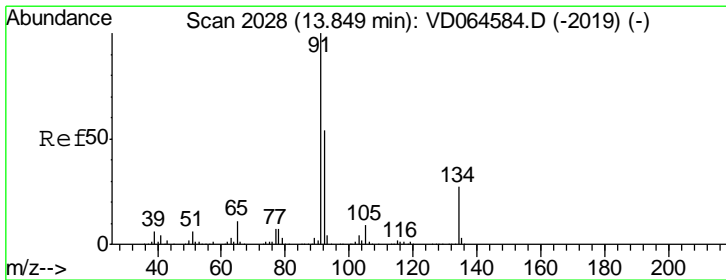
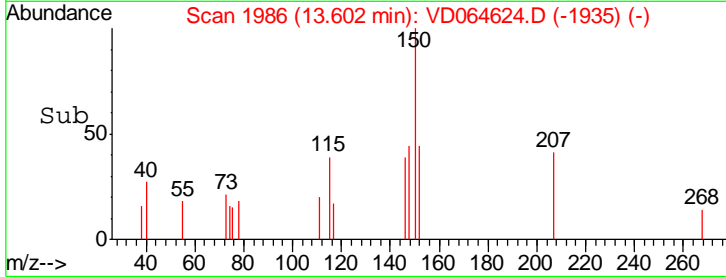
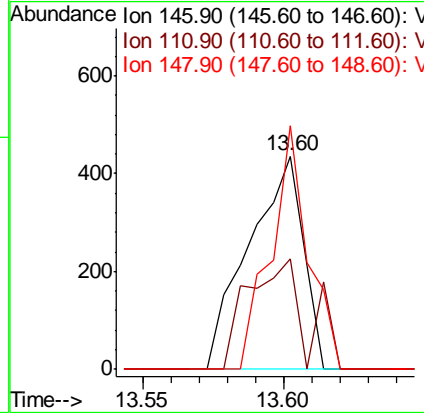
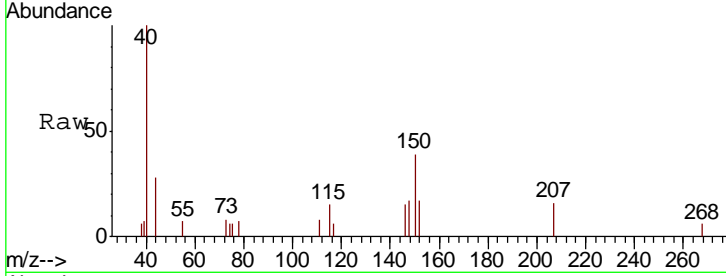




#88
 1,4-Dichlorobenzene
 Concen: 3.095 ug/l
 RT: 13.60 min Scan# 1986
 Delta R.T. 0.00 min
 Lab File: VD064624.D
 Acq: 27 Dec 2019 04:27

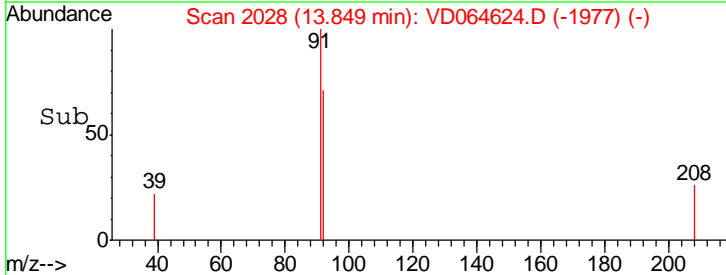
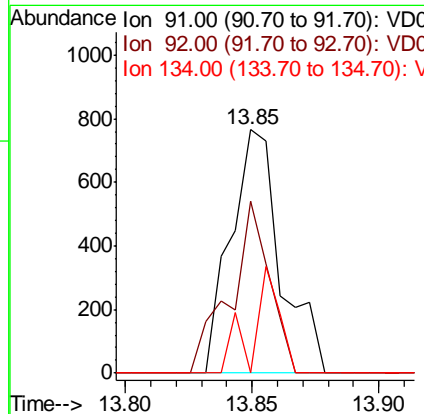
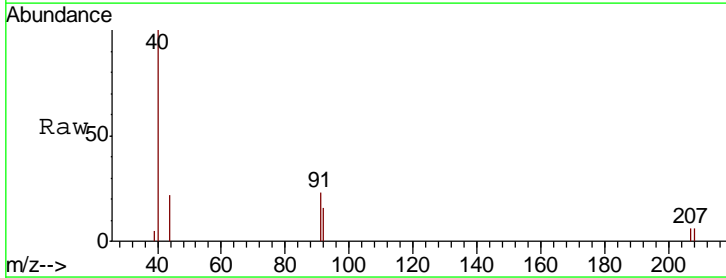
Instrument :
 MSVOA_D
 ClientSampled :
 LIED-BF001-02

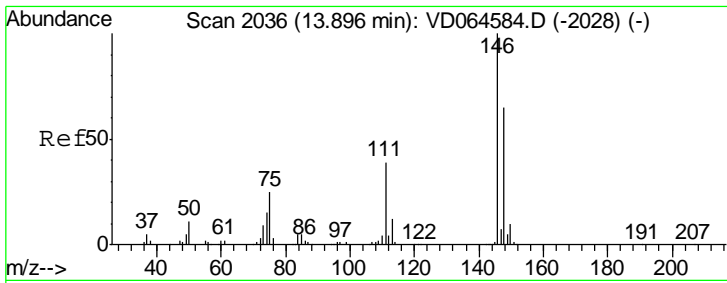
Tgt Ion	Resp	Lower	Upper
146	100		
111	56.1	18.1	54.1#
148	78.6	32.3	96.9



#89
 n-Butylbenzene
 Concen: 3.050 ug/l
 RT: 13.85 min Scan# 2028
 Delta R.T. 0.00 min
 Lab File: VD064624.D
 Acq: 27 Dec 2019 04:27

Tgt Ion	Resp	Lower	Upper
91	100		
92	55.3	26.8	80.4
134	24.0	14.0	41.9

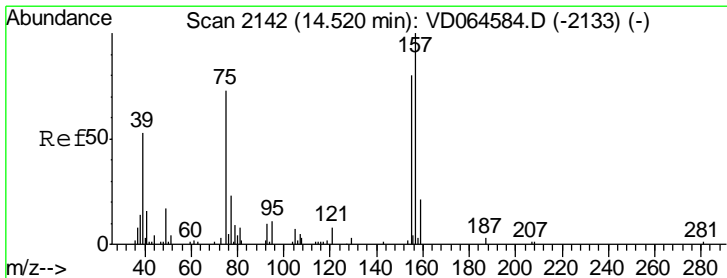
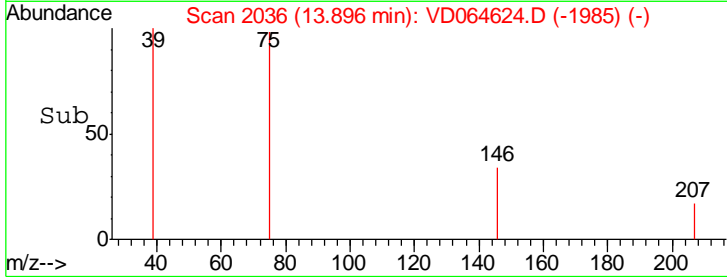
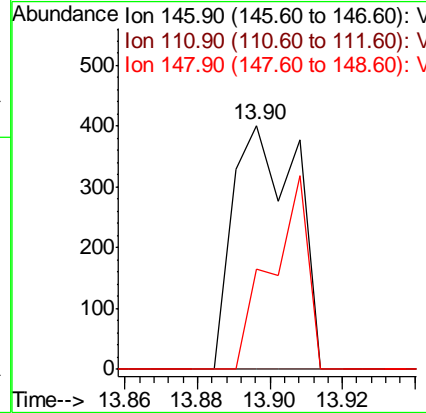
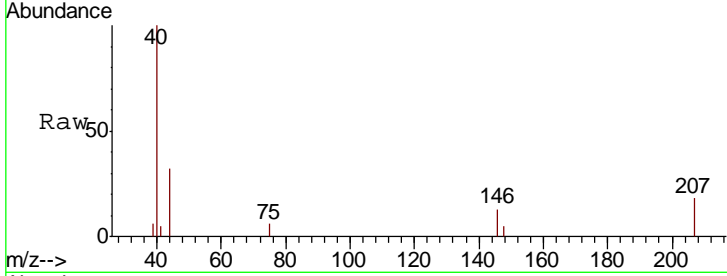




#91
 1,2-Dichlorobenzene
 Concen: 2.985 ug/l
 RT: 13.90 min Scan# 2036
 Delta R.T. 0.00 min
 Lab File: VD064624.D
 Acq: 27 Dec 2019 04:27

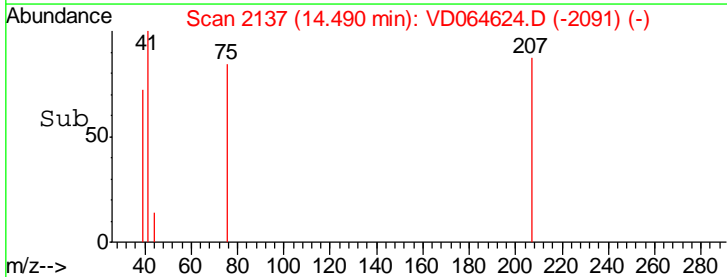
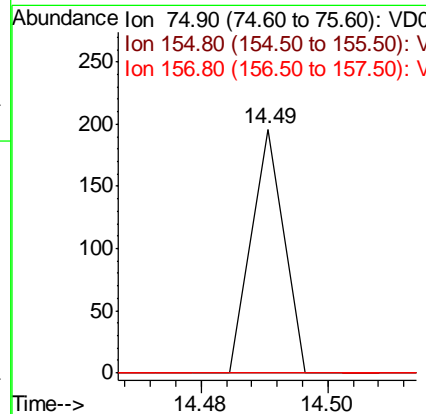
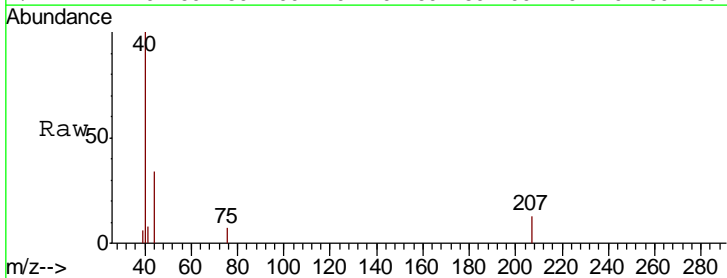
Instrument :
 MSVOA_D
 ClientSampled :
 LIED-BF001-02

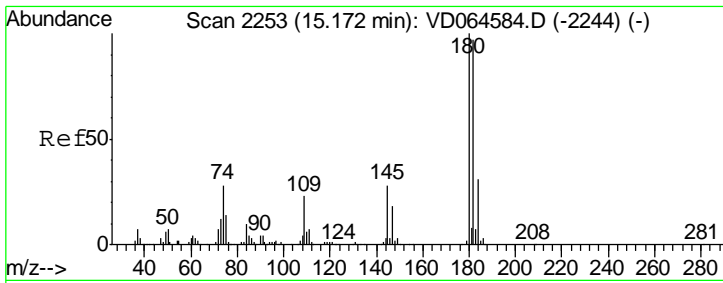
Tgt Ion	Resp	Lower	Upper
146	100		
111	0.0	19.3	57.9#
148	46.1	31.9	95.5



#92
 1,2-Dibromo-3-Chloropropane
 Concen: 6.619 ug/l
 RT: 14.49 min Scan# 2137
 Delta R.T. -0.03 min
 Lab File: VD064624.D
 Acq: 27 Dec 2019 04:27

Tgt Ion	Resp	Lower	Upper
75	100		
155	0.0	48.0	144.0#
157	0.0	64.1	192.3#

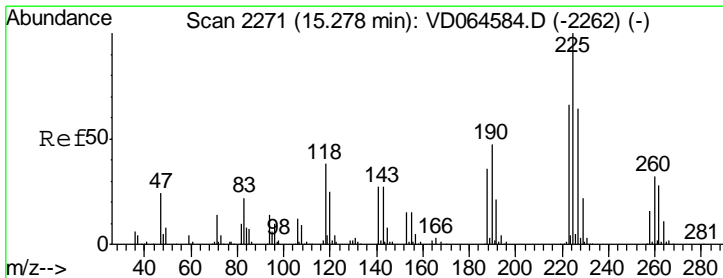
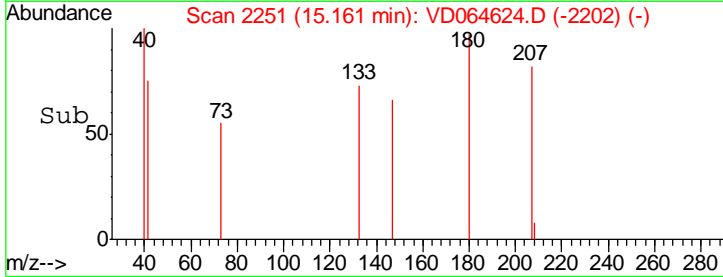
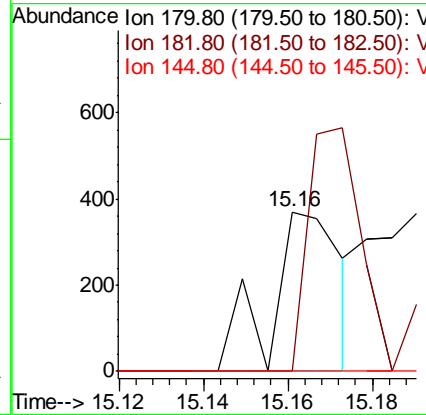
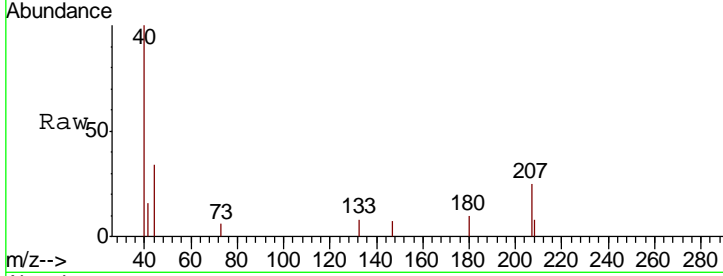




#93
 1,2,4-Trichlorobenzene
 Concen: 3.522 ug/l
 RT: 15.16 min Scan# 2251
 Delta R.T. -0.01 min
 Lab File: VD064624.D
 Acq: 27 Dec 2019 04:27

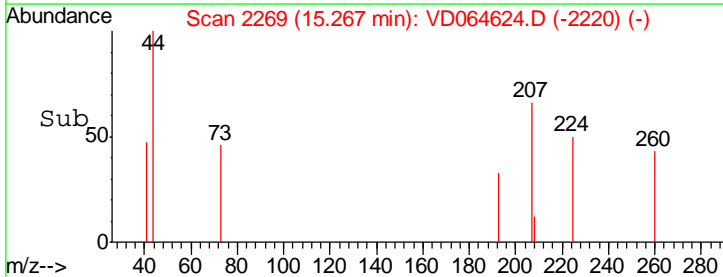
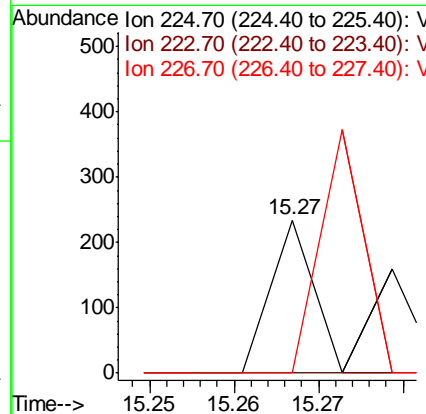
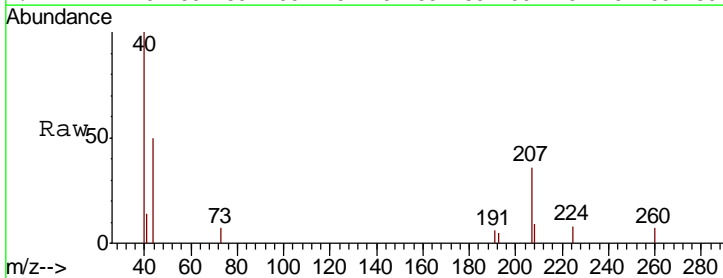
Instrument :
 MSVOA_D
 ClientSampled :
 LIED-BF001-02

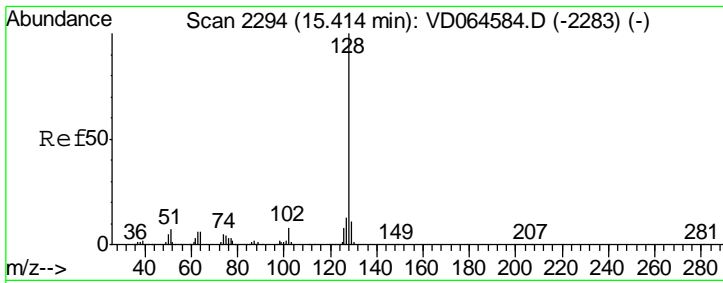
Tgt Ion	Resp	Lower	Upper
180	424		
182	126.4	48.0	144.2
145	0.0	13.8	41.4#



#94
 Hexachlorobutadiene
 Concen: 1.096 ug/l
 RT: 15.27 min Scan# 2269
 Delta R.T. -0.01 min
 Lab File: VD064624.D
 Acq: 27 Dec 2019 04:27

Tgt Ion	Resp	Lower	Upper
225	83		
223	0.0	31.1	93.2#
227	159.0	30.9	92.7#

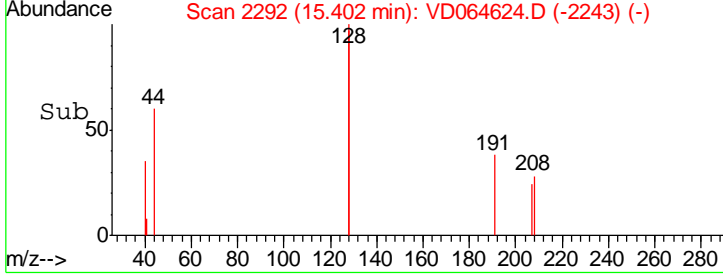
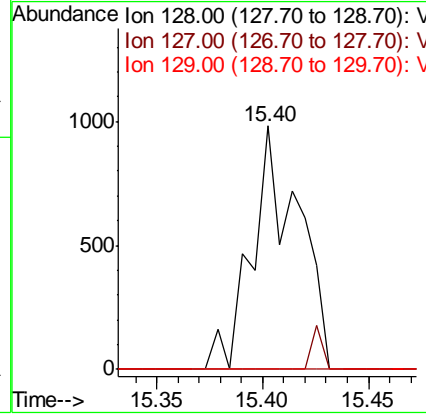
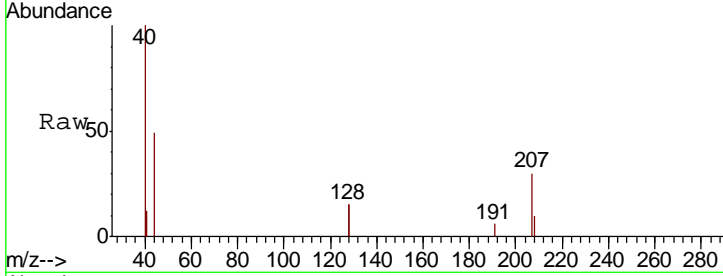




#95
 Naphthalene
 Concen: 7.897 ug/l
 RT: 15.40 min Scan# 2292
 Delta R.T. -0.01 min
 Lab File: VD064624.D
 Acq: 27 Dec 2019 04:27

Instrument : MSVOA_D
 ClientSampleId : LIED-BF001-02

Tgt Ion	Resp	Lower	Upper
128	1504		
127	0.0	10.3	15.5#
129	0.0	8.5	12.7#



#96
 1,2,3-Trichlorobenzene
 Concen: 6.471 ug/l
 RT: 15.60 min Scan# 2326
 Delta R.T. -0.01 min
 Lab File: VD064624.D
 Acq: 27 Dec 2019 04:27

Tgt Ion	Resp	Lower	Upper
180	665		
182	81.5	47.9	143.7
145	39.4	14.9	44.7

