

Data Path : Z:\VOASRV\HPCHEM1\MSVOA D\DATA\VD122719\
 Data File : VD064643.D
 Acq On : 27 Dec 2019 14:25
 Operator : VA/SY
 Sample : K6431-03
 Misc : 4.99G/5.00ml/MSVOA D/SOIL
 ALS Vial : 11 Sample Multiplier: 1

Instrument :
 MSVOA_D
 ClientSampleId :
 SB-4-(0-2)

Integration Parameters: RTEINT.P
 Integrator: RTE
 Smoothing : ON Filtering: 5
 Sampling : 1 Min Area: 3 % of largest Peak
 Start Thrs: 0.2 Max Peaks: 100
 Stop Thrs : 0 Peak Location: TOP

If leading or trailing edge < 100 prefer < Baseline drop else tangent >
 Peak separation: 5

Method : Z:\VOASRV\HPCHEM1\MSVOA_D\METHOD\82D122419S.M
 Title : SW846 8260

Signal : TIC

peak #	R.T. min	first scan	max scan	last scan	PK TY	peak height	corr. area	corr. % max.	% of total
1	2.644	117	123	129	rBV7	15000	36786	1.53%	0.286%
2	4.967	510	518	526	rBV6	13010	37699	1.57%	0.293%
3	7.714	977	985	996	rVB3	14248	33740	1.40%	0.262%
4	7.920	1009	1020	1025	rBV2	348898	834971	34.68%	6.485%
5	7.985	1025	1031	1043	rVB	638988	1419830	58.97%	11.027%
6	8.337	1078	1091	1100	rBV2	300688	701751	29.15%	5.450%
7	8.867	1171	1181	1197	rBV	856443	1762730	73.22%	13.690%
8	10.343	1423	1432	1446	rBV	1307446	2407587	100.00%	18.699%
9	11.649	1645	1654	1665	rBV	1194383	2053471	85.29%	15.948%
10	12.637	1814	1822	1834	rBV	964643	1601680	66.53%	12.439%
11	13.578	1976	1982	1992	rVB	1185060	1985559	82.47%	15.421%

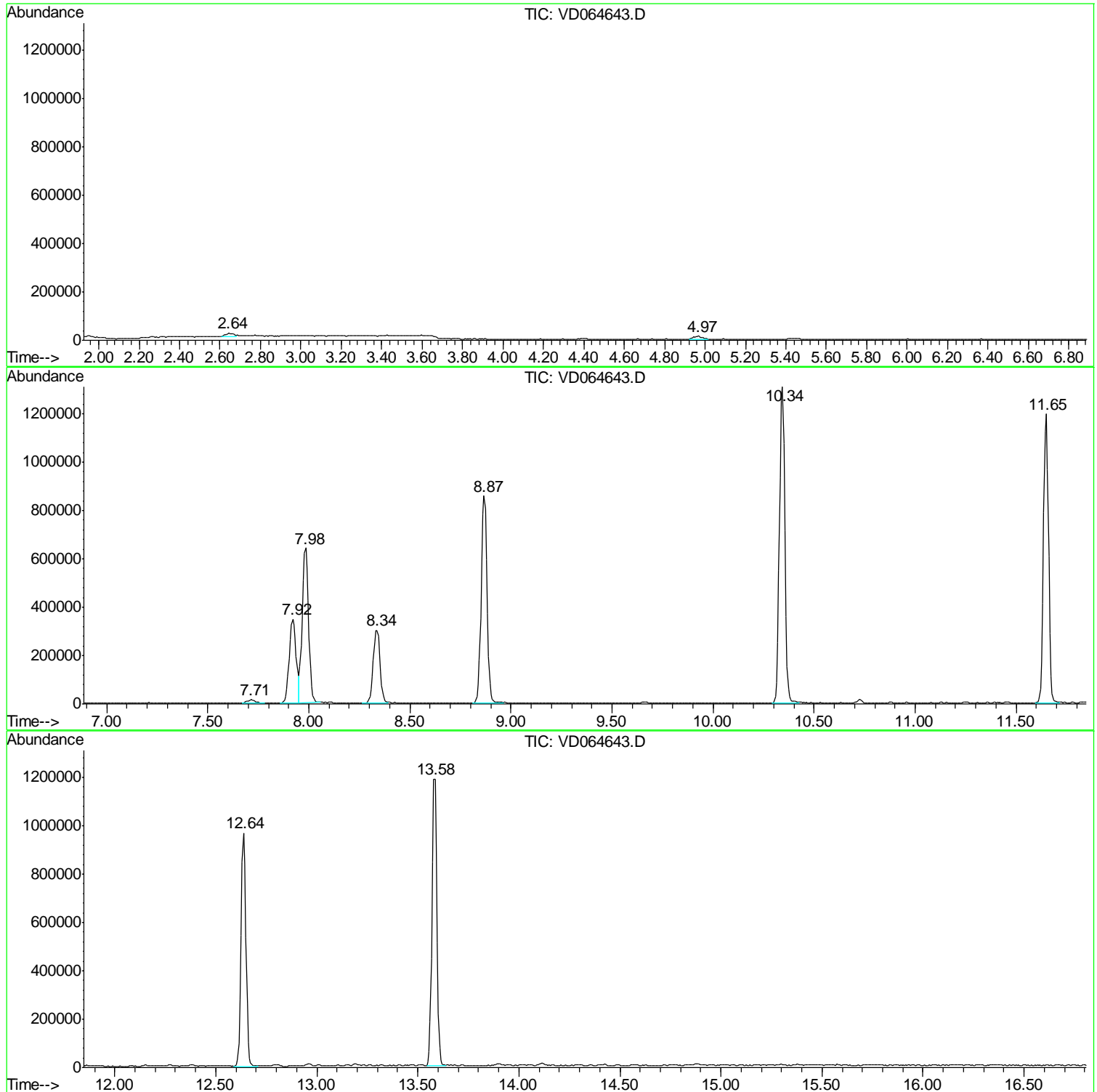
Sum of corrected areas: 12875804

Data Path : Z:\VOASRV\HPCHEM1\MSVOA D\DATA\VD122719\
Data File : VD064643.D
Acq On : 27 Dec 2019 14:25
Operator : VA/SY
Sample : K6431-03
Misc : 4.99G/5.00ml/MSVOA D/SOIL
ALS Vial : 11 Sample Multiplier: 1

Instrument :
MSVOA_D
ClientSampled :
SB-4-(0-2)

Quant Method : Z:\VOASRV\HPCHEM1\MSVOA_D\METHOD\82D122419S.M
Quant Title : SW846 8260

TIC Library : C:\DATABASE\NIST11.L
TIC Integration Parameters: LSCINT.P



Data Path : Z:\VOASRV\HPCHEM1\MSVOA_D\DATA\VD122719\
Data File : VD064643.D
Acq On : 27 Dec 2019 14:25
Operator : VA/SY
Sample : K6431-03
Misc : 4.99G/5.00ml/MSVOA_D/SOIL
ALS Vial : 11 Sample Multiplier: 1

Instrument :
MSVOA_D
ClientSampleId :
SB-4-(0-2)

Quant Method : Z:\VOASRV\HPCHEM1\MSVOA_D\METHOD\82D122419S.M
Quant Title : SW846 8260

TIC Library : C:\DATABASE\NIST11.L
TIC Integration Parameters: LSCINT.P

No Library Search Compounds Detected

Data Path : Z:\VOASRV\HPCHEM1\MSVOA_D\DATA\VD122719\
Data File : VD064643.D
Acq On : 27 Dec 2019 14:25
Operator : VA/SY
Sample : K6431-03
Misc : 4.99G/5.00ml/MSVOA_D/SOIL
ALS Vial : 11 Sample Multiplier: 1

Instrument :
MSVOA_D
ClientSampleId :
SB-4-(0-2)

Quant Method : Z:\VOASRV\HPCHEM1\MSVOA_D\METHOD\82D122419S.M
Quant Title : SW846 8260

TIC Library : C:\DATABASE\NIST11.L
TIC Integration Parameters: LSCINT.P

TIC Top Hit name	RT	EstConc	Units	Response	--Internal Standard--			
					#	RT	Resp	Conc
