

Data Path : Z:\voasrv\HPCHEM1\MSVOA\_D\Data\VD123020\  
 Data File : VD067980.D  
 Acq On : 30 Dec 2020 17:28  
 Operator : VA/SY  
 Sample : L5242-12  
 Misc : 5.34G/5.00ml/MSVOA\_D/SOIL  
 ALS Vial : 12 Sample Multiplier: 1

Instrument :  
 MSVOA\_D  
 ClientSampled :

Quant Time: Dec 31 00:17:01 2020  
 Quant Method : Z:\voasrv\HPCHEM1\MSVOA\_D\Method\82D122220S.M  
 Quant Title : SW846 8260  
 QLast Update : Wed Dec 23 07:34:16 2020  
 Response via : Initial Calibration

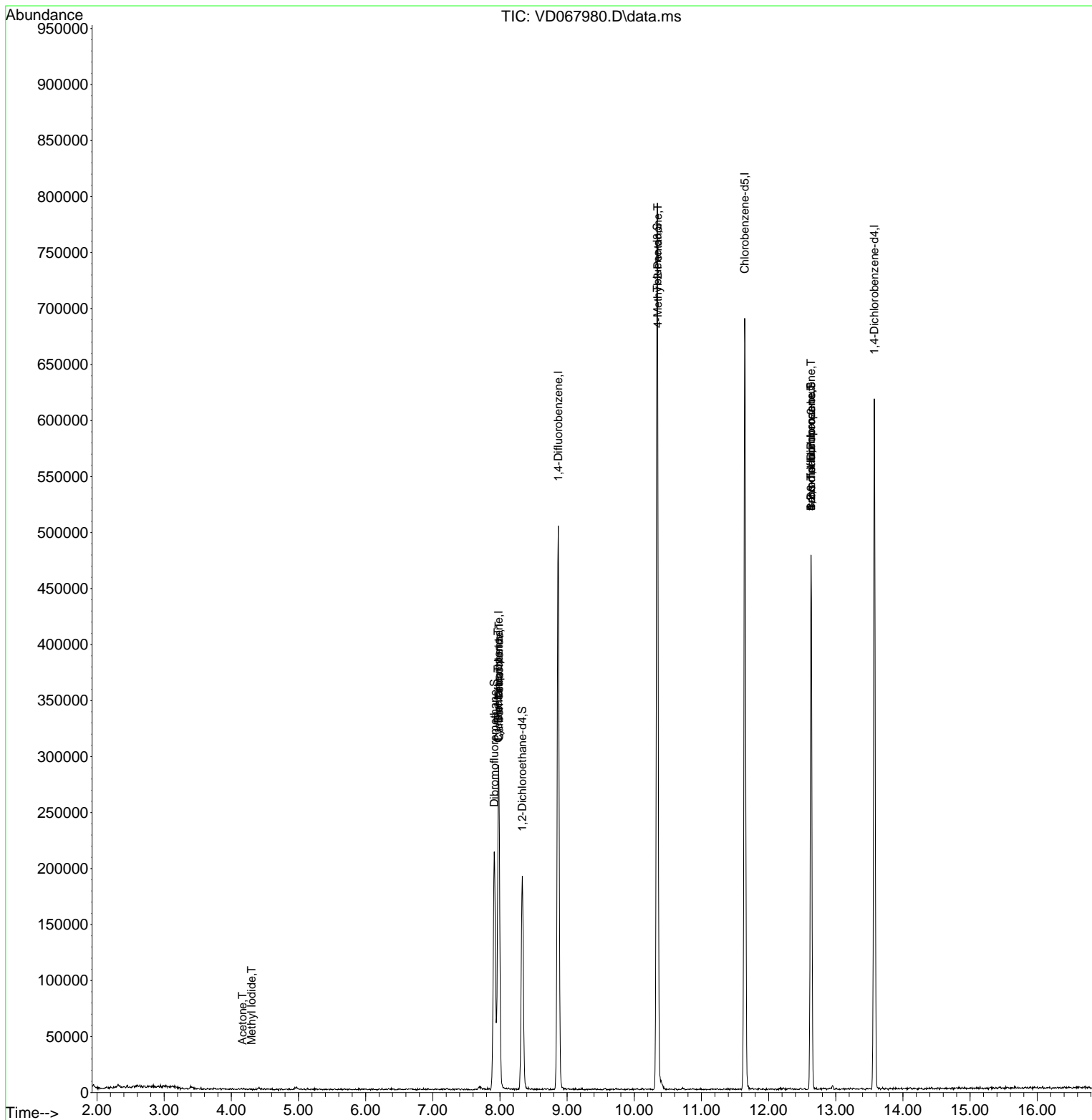
Compound	R.T.	QIon	Response	Conc	Units	Dev(Min)
-----						
Internal Standards						
1) Pentafluorobenzene	7.979	168	202892	50.00	ug/l	0.00
34) 1,4-Difluorobenzene	8.867	114	417090	50.00	ug/l	0.00
63) Chlorobenzene-d5	11.644	117	390333	50.00	ug/l	0.00
72) 1,4-Dichlorobenzene-d4	13.573	152	158585	50.00	ug/l	0.00
System Monitoring Compounds						
33) 1,2-Dichloroethane-d4	8.332	65	152859	69.77	ug/l	0.00
Spiked Amount	50.000	Range	50 - 163	Recovery	=	139.54%
35) Dibromofluoromethane	7.914	113	151529	57.66	ug/l	0.00
Spiked Amount	50.000	Range	54 - 147	Recovery	=	115.32%
50) Toluene-d8	10.344	98	534337	54.09	ug/l	0.00
Spiked Amount	50.000	Range	49 - 140	Recovery	=	108.18%
62) 4-Bromofluorobenzene	12.632	95	153493	45.43	ug/l	0.00
Spiked Amount	50.000	Range	25 - 144	Recovery	=	90.86%
Target Compounds						
					Qvalue	
5) Bromomethane	2.768	94	254	Below Cal	#	1
10) Methyl Iodide	4.303	142	83	3.88	ug/l #	41
16) Acetone	4.168	43	747	1.79	ug/l #	47
20) Methylene Chloride	4.962	84	993	Below Cal	#	35
31) Cyclohexane	7.973	56	5275	1.18	ug/l #	19
36) 1,1-Dichloropropene	7.973	75	18604	4.20	ug/l #	49
38) Carbon Tetrachloride	7.985	117	21510	5.08	ug/l #	14
51) 4-Methyl-2-Pentanone	10.350	43	2429	1.42	ug/l #	1
71) Bromoform	12.632	173	1757	1.16	ug/l #	1
76) 1,2,3-Trichloropropane	12.632	75	80097	59.99	ug/l #	100
81) trans-1,4-Dichloro-2-b...	12.632	75	80097	122.97	ug/l #	12
-----						

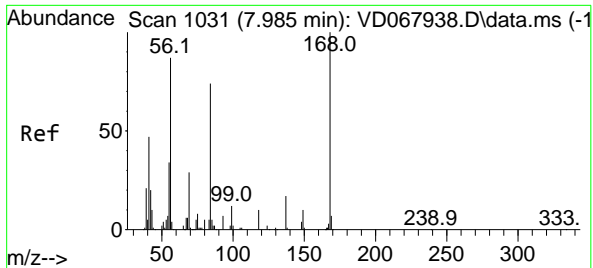
(#) = qualifier out of range (m) = manual integration (+) = signals summed

Data Path : Z:\voasrv\HPCHEM1\MSVOA\_D\Data\VD123020\  
 Data File : VD067980.D  
 Acq On : 30 Dec 2020 17:28  
 Operator : VA/SY  
 Sample : L5242-12  
 Misc : 5.34G/5.00ml/MSVOA\_D/SOIL  
 ALS Vial : 12 Sample Multiplier: 1

Instrument :  
 MSVOA\_D  
 ClientSampled :

Quant Time: Dec 31 00:17:01 2020  
 Quant Method : Z:\voasrv\HPCHEM1\MSVOA\_D\Method\82D122220S.M  
 Quant Title : SW846 8260  
 QLast Update : Wed Dec 23 07:34:16 2020  
 Response via : Initial Calibration

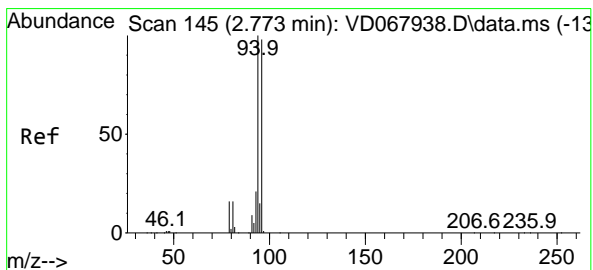
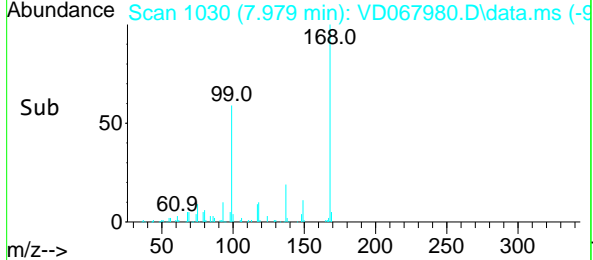
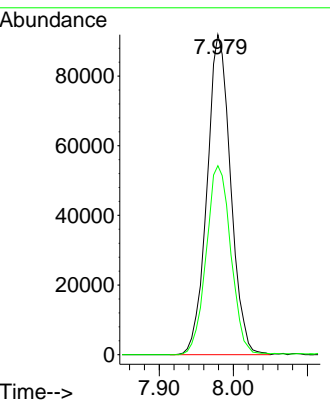
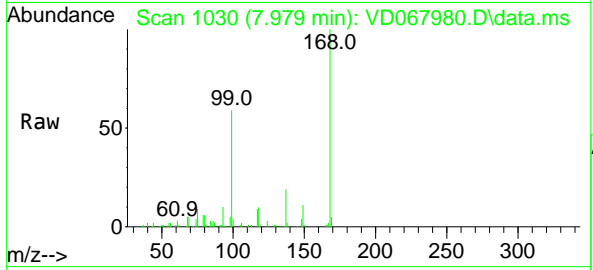




#1  
 Pentafluorobenzene  
 Concen: 50.00 ug/l  
 RT: 7.979 min Scan# 1030  
 Delta R.T. -0.006 min  
 Lab File: VD067980.D  
 Acq: 30 Dec 2020 17:28

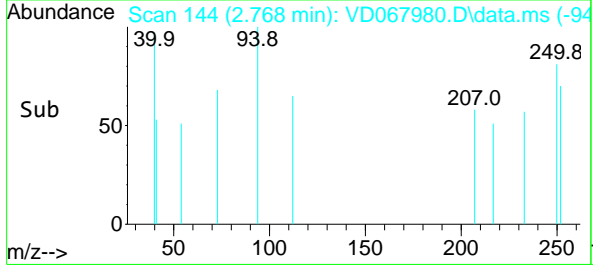
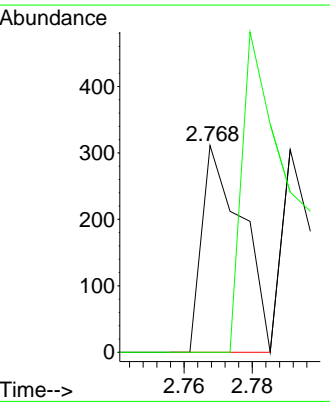
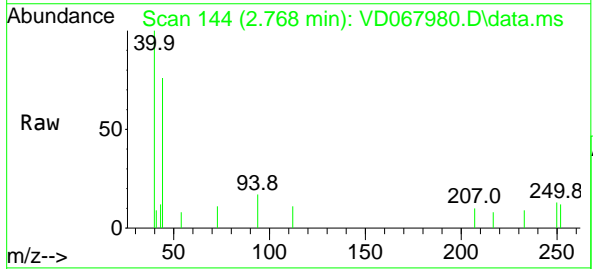
Instrument :  
 MSVOA\_D  
 ClientSampled :

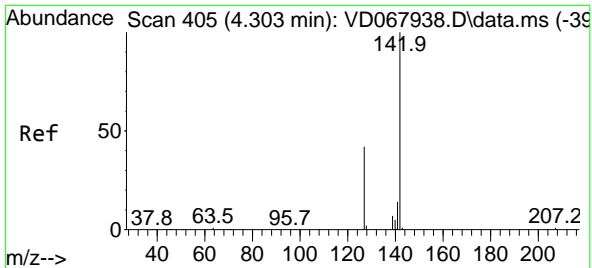
Tgt Ion:168 Resp: 202892  
 Ion Ratio Lower Upper  
 168 100  
 99 59.1 48.0 72.0



#5  
 Bromomethane  
 Concen: Below Cal  
 RT: 2.768 min Scan# 144  
 Delta R.T. -0.005 min  
 Lab File: VD067980.D  
 Acq: 30 Dec 2020 17:28

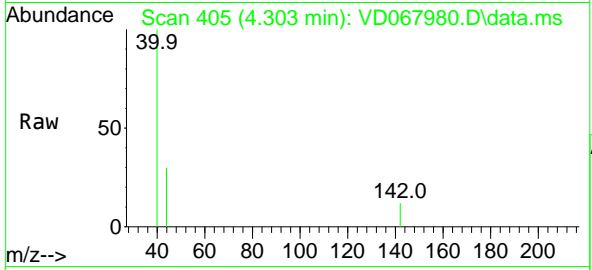
Tgt Ion: 94 Resp: 254  
 Ion Ratio Lower Upper  
 94 100  
 96 0.0 78.0 117.0#



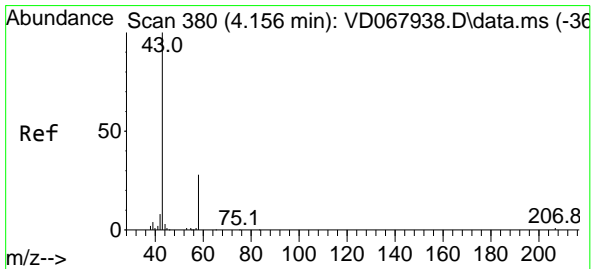
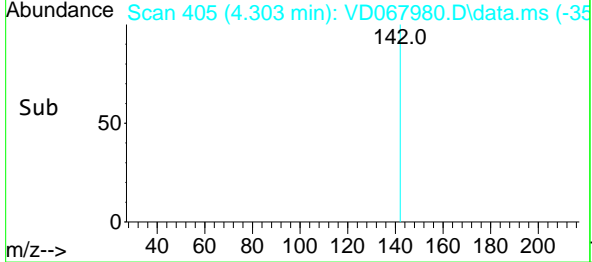
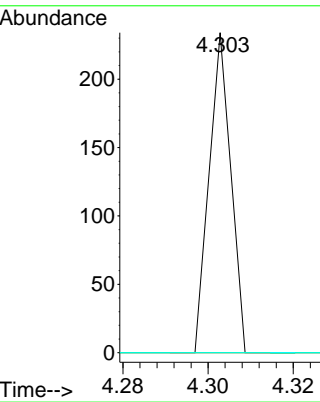


#10  
 Methyl Iodide  
 Concen: 3.88 ug/l  
 RT: 4.303 min Scan# 405  
 Delta R.T. -0.000 min  
 Lab File: VD067980.D  
 Acq: 30 Dec 2020 17:28

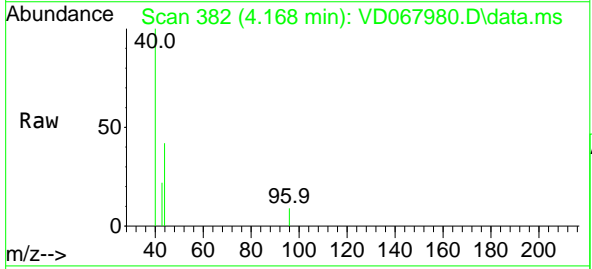
Instrument :  
 MSVOA\_D  
 ClientSampled :



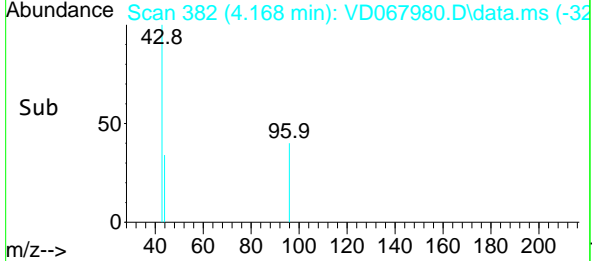
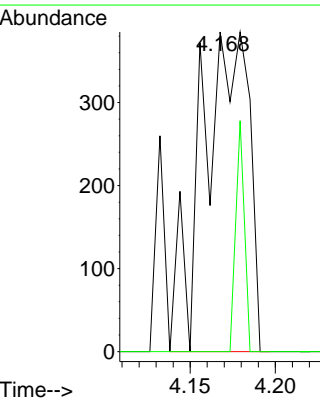
Tgt Ion	Ratio	Lower	Upper
142	100		
127	0.0	34.4	51.6#
141	0.0	11.8	17.8#

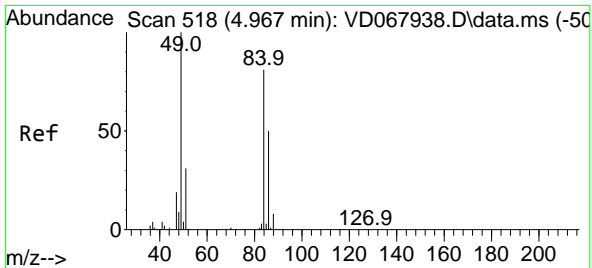


#16  
 Acetone  
 Concen: 1.79 ug/l  
 RT: 4.168 min Scan# 382  
 Delta R.T. 0.012 min  
 Lab File: VD067980.D  
 Acq: 30 Dec 2020 17:28



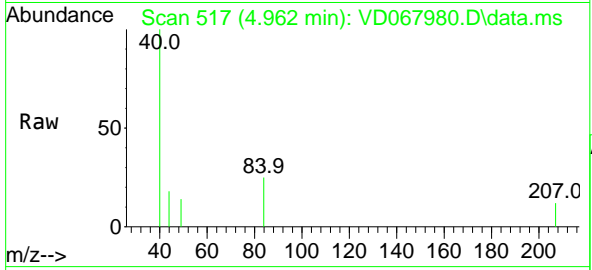
Tgt Ion	Ratio	Lower	Upper
43	100		
58	0.0	22.3	33.5#





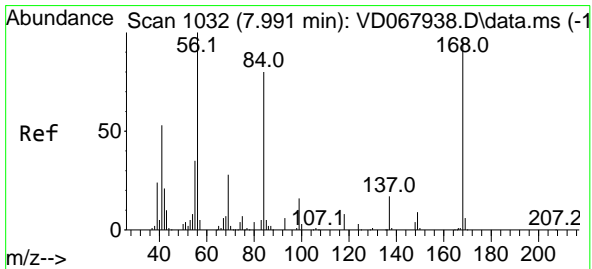
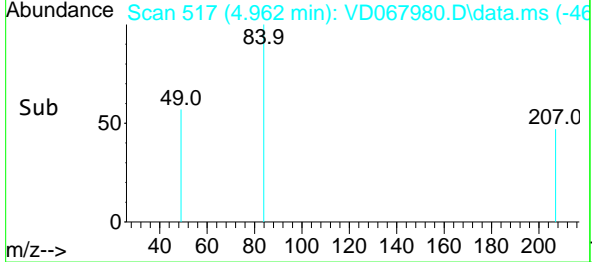
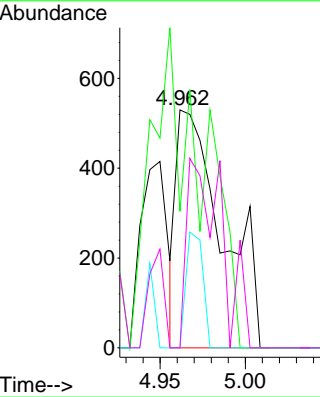
#20  
 Methylene Chloride  
 Concen: Below Cal  
 RT: 4.962 min Scan# 517  
 Delta R.T. -0.005 min  
 Lab File: VD067980.D  
 Acq: 30 Dec 2020 17:28

Instrument :  
 MSVOA\_D  
 ClientSampled :

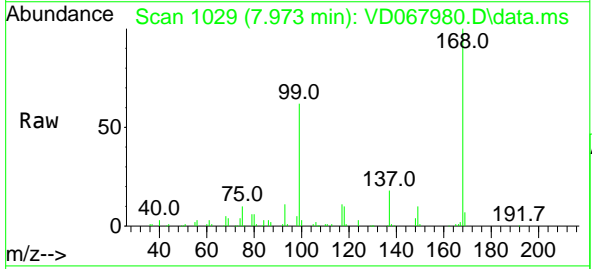


Tgt Ion: 84 Resp: 993

Ion	Ratio	Lower	Upper
84	100		
49	57.4	98.3	147.5#
51	0.0	30.3	45.5#
86	0.0	49.0	73.4#

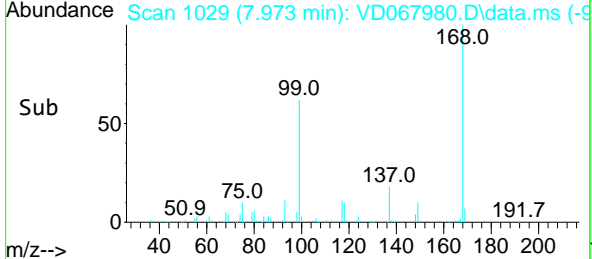
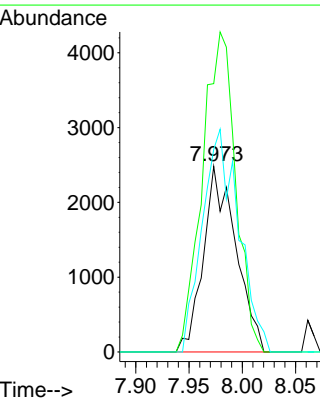


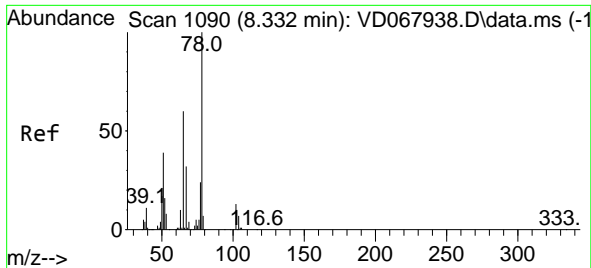
#31  
 Cyclohexane  
 Concen: 1.18 ug/l  
 RT: 7.973 min Scan# 1029  
 Delta R.T. -0.018 min  
 Lab File: VD067980.D  
 Acq: 30 Dec 2020 17:28



Tgt Ion: 56 Resp: 5275

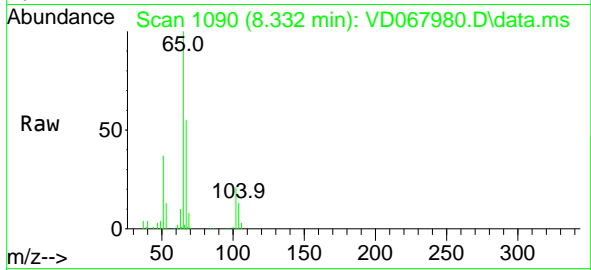
Ion	Ratio	Lower	Upper
56	100		
69	144.6	22.7	34.1#
84	109.1	64.2	96.4#



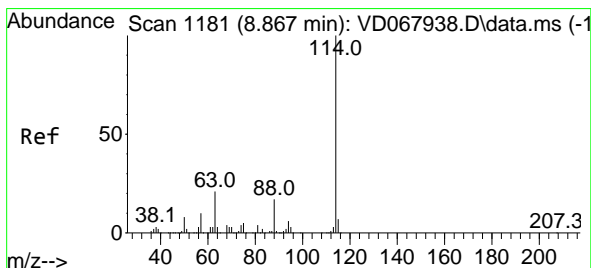
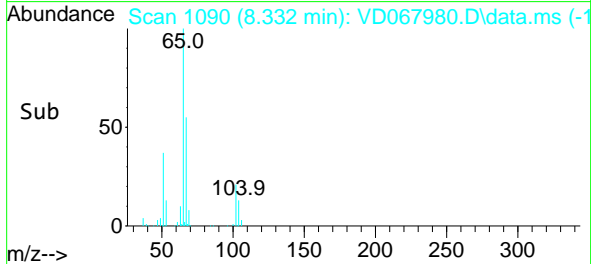
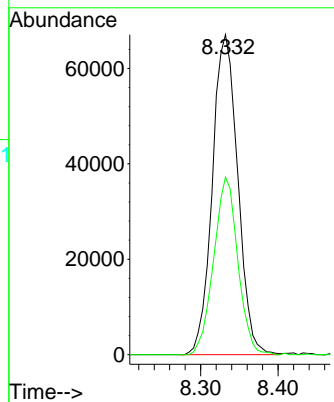


#33  
 1,2-Dichloroethane-d4  
 Concen: 69.77 ug/l  
 RT: 8.332 min Scan# 1090  
 Delta R.T. 0.000 min  
 Lab File: VD067980.D  
 Acq: 30 Dec 2020 17:28

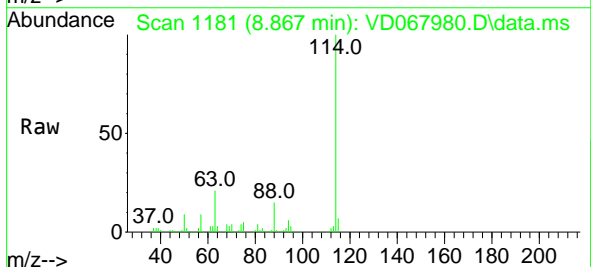
Instrument :  
 MSVOA\_D  
 ClientSampled :



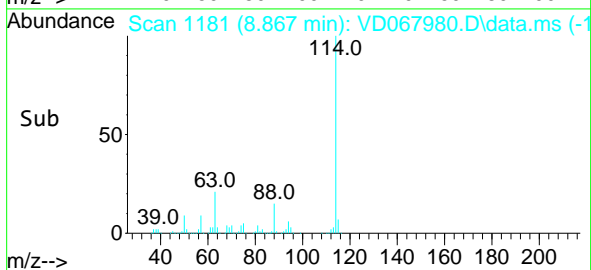
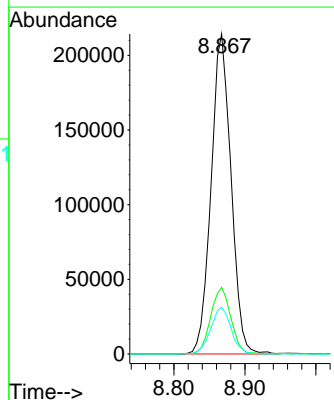
Tgt Ion: 65 Resp: 152859  
 Ion Ratio Lower Upper  
 65 100  
 67 52.7 0.0 110.0

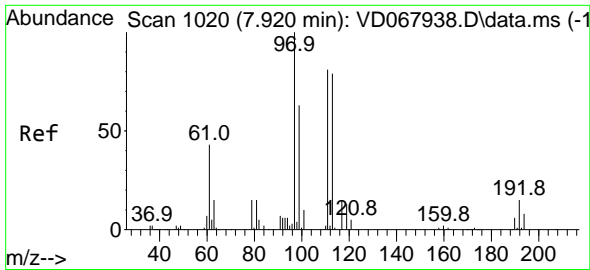


#34  
 1,4-Difluorobenzene  
 Concen: 50.00 ug/l  
 RT: 8.867 min Scan# 1181  
 Delta R.T. 0.000 min  
 Lab File: VD067980.D  
 Acq: 30 Dec 2020 17:28



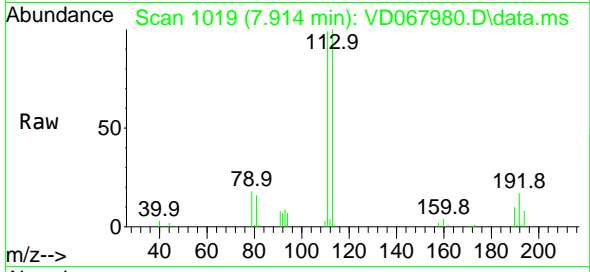
Tgt Ion: 114 Resp: 417090  
 Ion Ratio Lower Upper  
 114 100  
 63 20.9 0.0 41.4  
 88 14.5 0.0 33.2



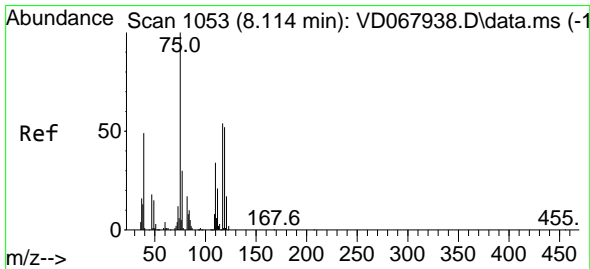
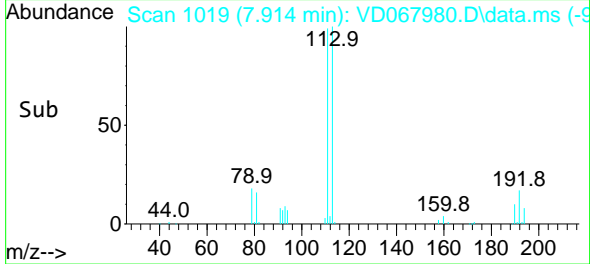
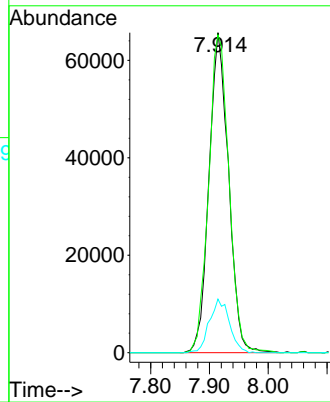


#35  
 Dibromofluoromethane  
 Concen: 57.66 ug/l  
 RT: 7.914 min Scan# 1019  
 Delta R.T. -0.006 min  
 Lab File: VD067980.D  
 Acq: 30 Dec 2020 17:28

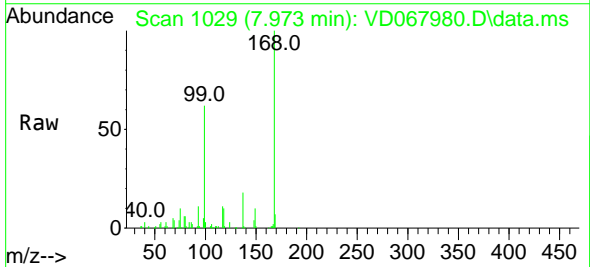
Instrument :  
 MSVOA\_D  
 ClientSampled :



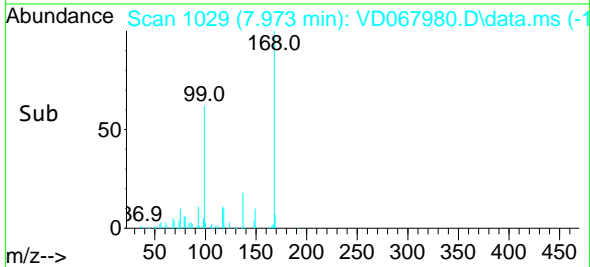
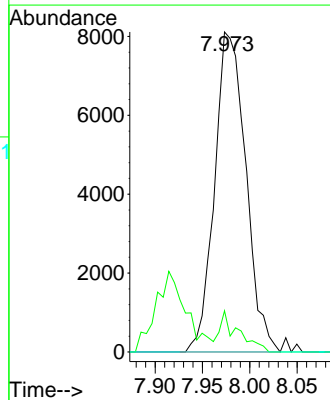
Tgt Ion:113 Resp: 151529  
 Ion Ratio Lower Upper  
 113 100  
 111 103.5 79.3 118.9  
 192 17.2 14.5 21.7

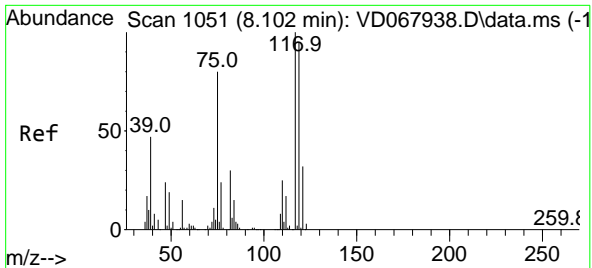


#36  
 1,1-Dichloropropene  
 Concen: 4.20 ug/l  
 RT: 7.973 min Scan# 1029  
 Delta R.T. -0.141 min  
 Lab File: VD067980.D  
 Acq: 30 Dec 2020 17:28



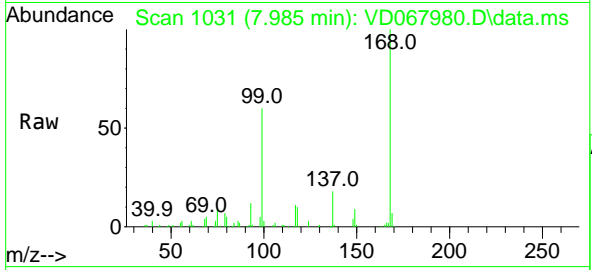
Tgt Ion: 75 Resp: 18604  
 Ion Ratio Lower Upper  
 75 100  
 110 7.6 17.0 51.0#  
 77 0.0 24.6 37.0#





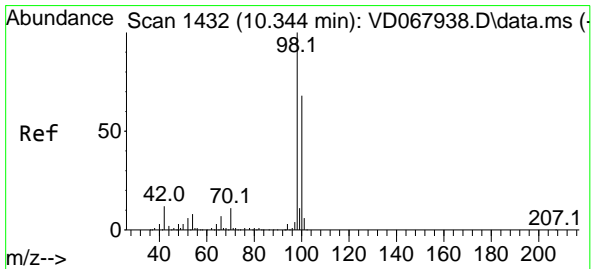
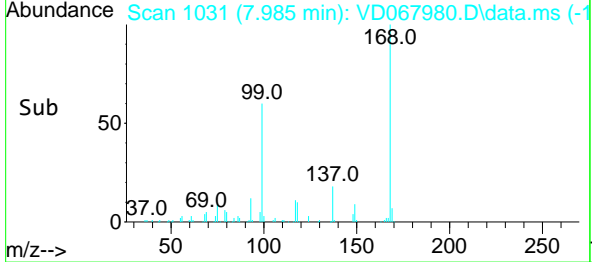
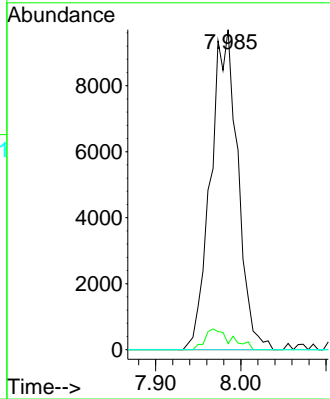
#38  
 Carbon Tetrachloride  
 Concen: 5.08 ug/l  
 RT: 7.985 min Scan# 1031  
 Delta R.T. -0.117 min  
 Lab File: VD067980.D  
 Acq: 30 Dec 2020 17:28

Instrument :  
 MSVOA\_D  
 ClientSampled :



Tgt Ion: 117 Resp: 21510

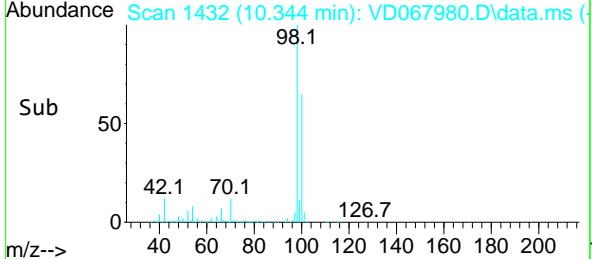
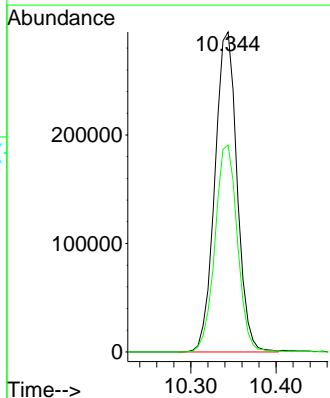
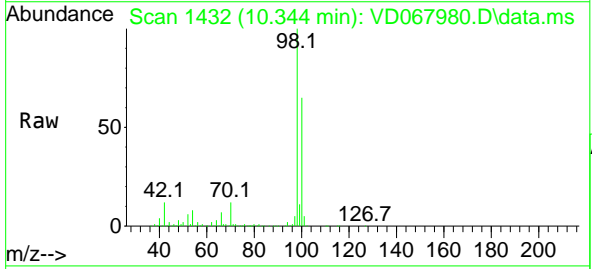
Ion	Ratio	Lower	Upper
117	100		
119	1.9	76.2	114.4#
121	0.0	25.9	38.9#



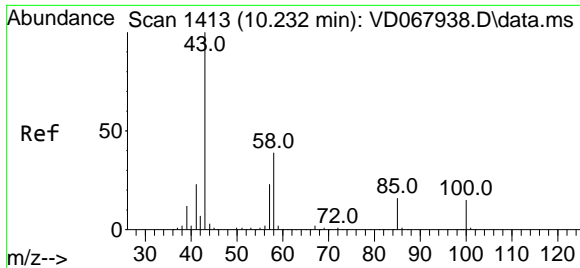
#50  
 Toluene-d8  
 Concen: 54.09 ug/l  
 RT: 10.344 min Scan# 1432  
 Delta R.T. 0.000 min  
 Lab File: VD067980.D  
 Acq: 30 Dec 2020 17:28

Tgt Ion: 98 Resp: 534337

Ion	Ratio	Lower	Upper
98	100		
100	65.3	52.5	78.7



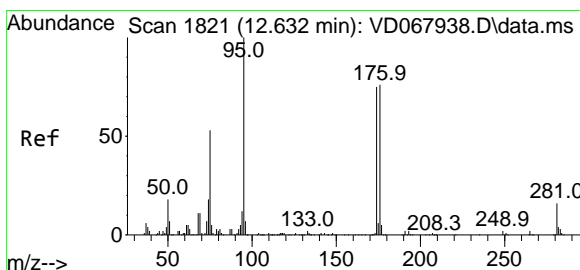
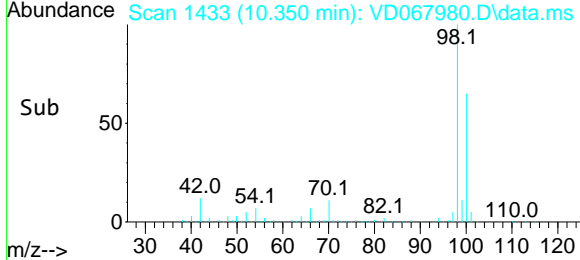
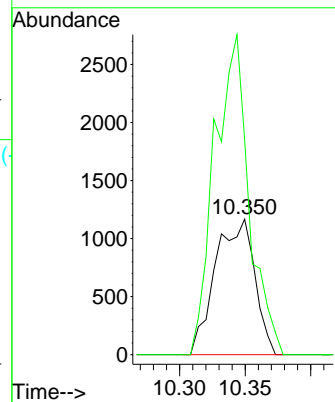
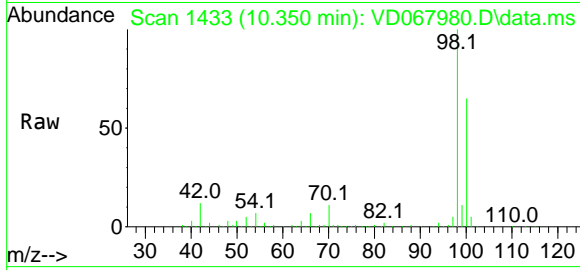




#51  
 4-Methyl-2-Pentanone  
 Concen: 1.42 ug/l  
 RT: 10.350 min Scan# 1433  
 Delta R.T. 0.118 min  
 Lab File: VD067980.D  
 Acq: 30 Dec 2020 17:28

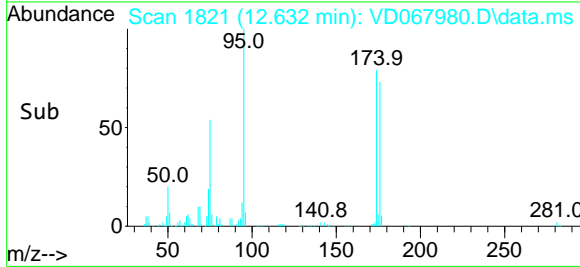
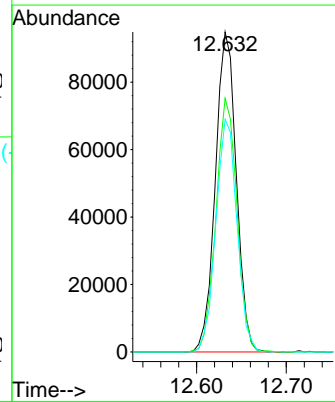
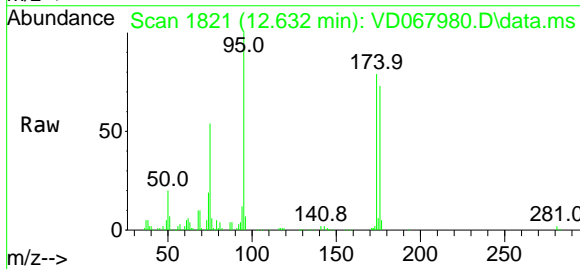
Instrument :  
 MSVOA\_D  
 ClientSampled :

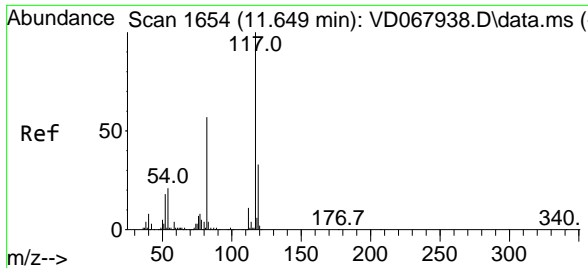
Tgt Ion: 43 Resp: 2429  
 Ion Ratio Lower Upper  
 43 100  
 58 206.2 30.0 45.0#



#62  
 4-Bromofluorobenzene  
 Concen: 45.43 ug/l  
 RT: 12.632 min Scan# 1821  
 Delta R.T. 0.000 min  
 Lab File: VD067980.D  
 Acq: 30 Dec 2020 17:28

Tgt Ion: 95 Resp: 153493  
 Ion Ratio Lower Upper  
 95 100  
 174 79.8 0.0 150.6  
 176 73.6 0.0 151.2



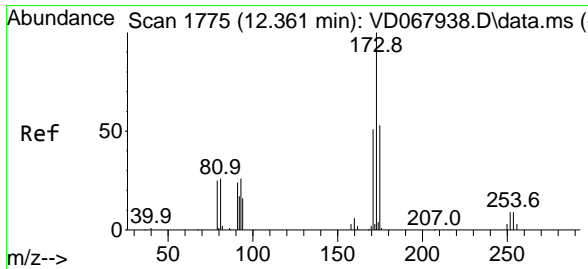
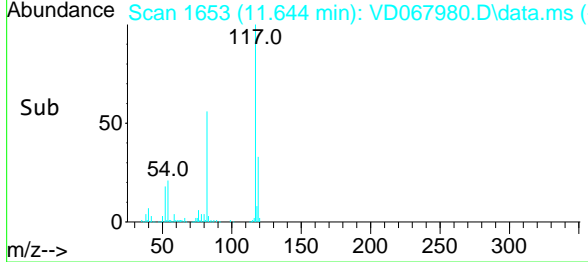
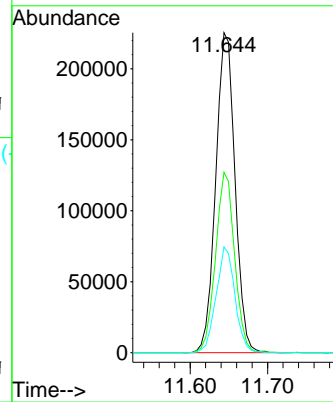
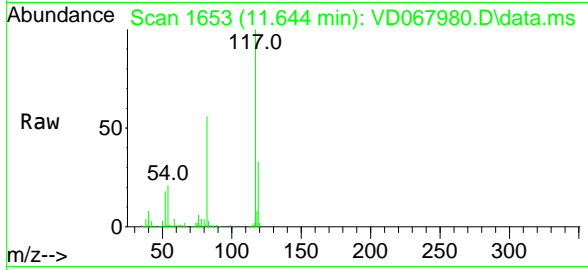


#63  
 Chlorobenzene-d5  
 Concen: 50.00 ug/l  
 RT: 11.644 min Scan# 1653  
 Delta R.T. -0.006 min  
 Lab File: VD067980.D  
 Acq: 30 Dec 2020 17:28

Instrument :  
 MSVOA\_D  
 ClientSampled :

Tgt Ion:117 Resp: 390333

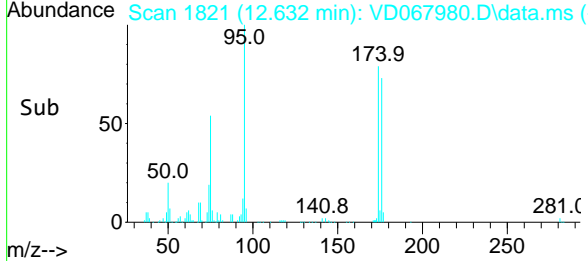
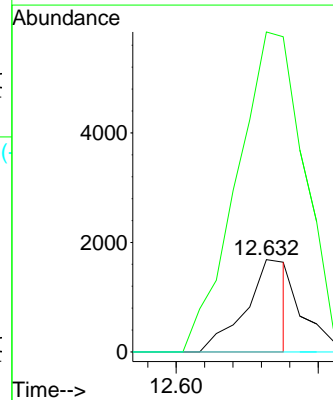
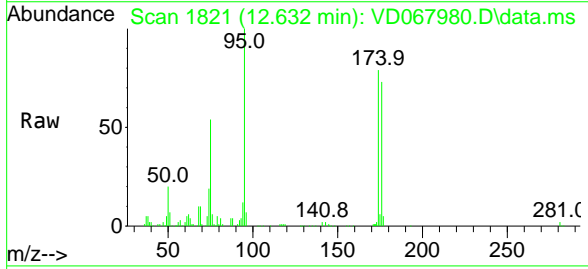
Ion	Ratio	Lower	Upper
117	100		
82	56.3	45.4	68.0
119	33.0	26.7	40.1

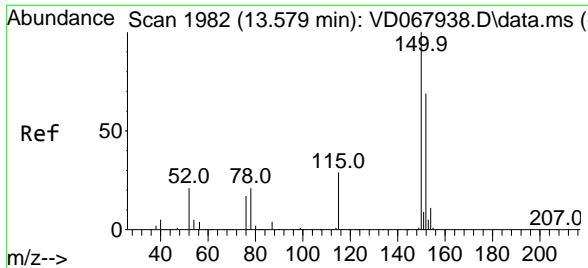


#71  
 Bromoform  
 Concen: 1.16 ug/l  
 RT: 12.632 min Scan# 1821  
 Delta R.T. 0.271 min  
 Lab File: VD067980.D  
 Acq: 30 Dec 2020 17:28

Tgt Ion:173 Resp: 1757

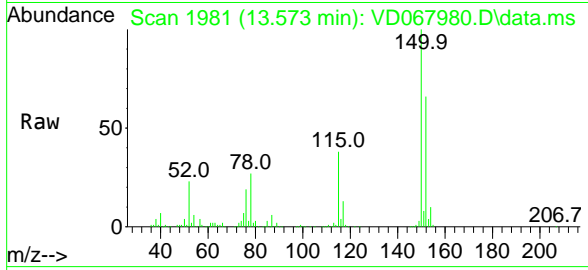
Ion	Ratio	Lower	Upper
173	100		
175	419.3	24.6	73.8#
254	0.0	0.0	0.0





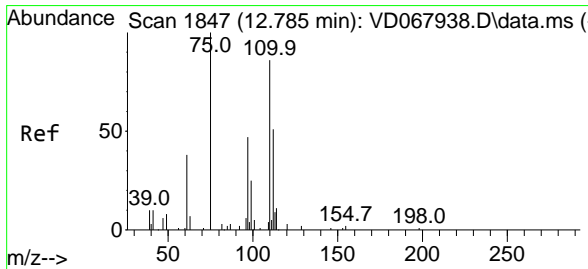
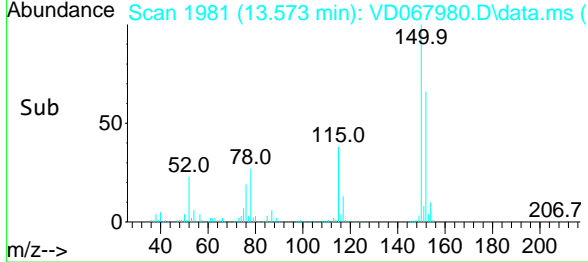
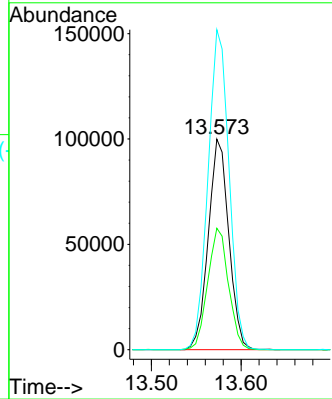
#72  
 1,4-Dichlorobenzene-d4  
 Concen: 50.00 ug/l  
 RT: 13.573 min Scan# 1981  
 Delta R.T. -0.006 min  
 Lab File: VD067980.D  
 Acq: 30 Dec 2020 17:28

Instrument :  
 MSVOA\_D  
 ClientSampled :



Tgt Ion:152 Resp: 158585

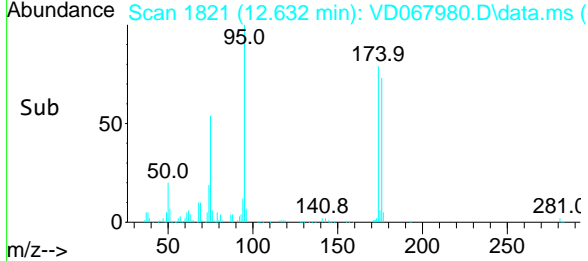
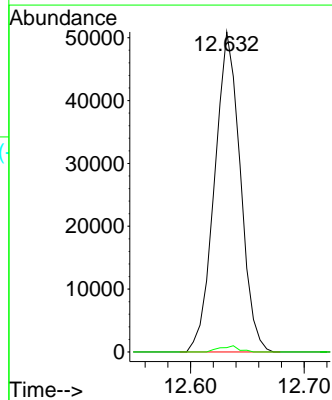
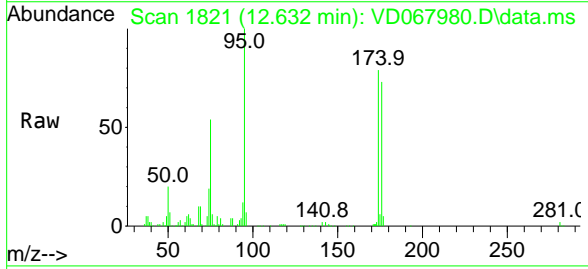
Ion	Ratio	Lower	Upper
152	100		
115	58.4	29.3	88.0
150	155.4	0.0	340.0

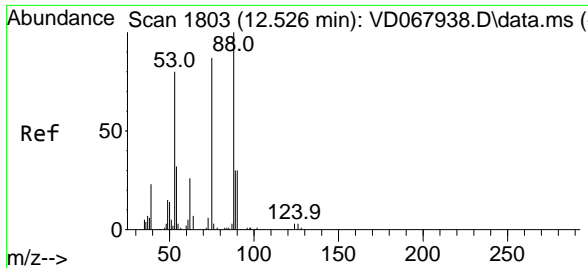


#76  
 1,2,3-Trichloropropane  
 Concen: 59.99 ug/l  
 RT: 12.632 min Scan# 1821  
 Delta R.T. -0.153 min  
 Lab File: VD067980.D  
 Acq: 30 Dec 2020 17:28

Tgt Ion: 75 Resp: 80097

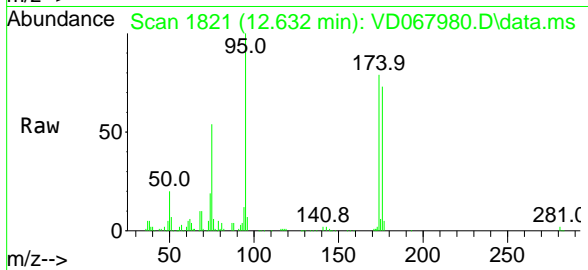
Ion	Ratio	Lower	Upper
75	100		
77	1.4	0.0	0.0#





#81  
 trans-1,4-Dichloro-2-butene  
 Concen: 122.97 ug/l  
 RT: 12.632 min Scan# 1821  
 Delta R.T. 0.106 min  
 Lab File: VD067980.D  
 Acq: 30 Dec 2020 17:28

Instrument :  
 MSVOA\_D  
 ClientSampled :



Tgt Ion: 75 Resp: 80097  
 Ion Ratio Lower Upper  
 75 100  
 53 0.1 74.9 112.3#  
 89 0.3 33.8 50.8#

