

Data Path : Z:\voasrv\HPCHEM1\MSVOA_D\Data\VD010721\
 Data File : VD068028.D
 Acq On : 07 Jan 2021 12:29
 Operator : VA/SY
 Sample : M1021-01
 Misc : 6.52G/5.00ml/MSVOA_D/SOIL
 ALS Vial : 7 Sample Multiplier: 1

Instrument :
 MSVOA_D
 ClientSampleId :
 OK-02-010621

Quant Time: Jan 08 00:14:07 2021
 Quant Method : Z:\voasrv\HPCHEM1\MSVOA_D\Method\82D122220S.M
 Quant Title : SW846 8260
 QLast Update : Wed Dec 23 07:34:16 2020
 Response via : Initial Calibration

| Compound | R.T. | QIon | Response | Conc | Units | Dev(Min) |
|-----------------------------|--------|-------|----------|----------|-------|----------|
| Internal Standards | | | | | | |
| 1) Pentafluorobenzene | 7.985 | 168 | 282412 | 50.00 | ug/l | 0.00 |
| 34) 1,4-Difluorobenzene | 8.867 | 114 | 570755 | 50.00 | ug/l | 0.00 |
| 63) Chlorobenzene-d5 | 11.650 | 117 | 544183 | 50.00 | ug/l | 0.00 |
| 72) 1,4-Dichlorobenzene-d4 | 13.579 | 152 | 230434 | 50.00 | ug/l | 0.00 |
| System Monitoring Compounds | | | | | | |
| 33) 1,2-Dichloroethane-d4 | 8.332 | 65 | 197637 | 64.81 | ug/l | 0.00 |
| Spiked Amount | 50.000 | Range | 50 - 163 | Recovery | = | 129.62% |
| 35) Dibromofluoromethane | 7.914 | 113 | 196476 | 54.63 | ug/l | 0.00 |
| Spiked Amount | 50.000 | Range | 54 - 147 | Recovery | = | 109.26% |
| 50) Toluene-d8 | 10.344 | 98 | 716428 | 53.00 | ug/l | 0.00 |
| Spiked Amount | 50.000 | Range | 49 - 140 | Recovery | = | 106.00% |
| 62) 4-Bromofluorobenzene | 12.632 | 95 | 231142 | 49.99 | ug/l | 0.00 |
| Spiked Amount | 50.000 | Range | 25 - 144 | Recovery | = | 99.98% |

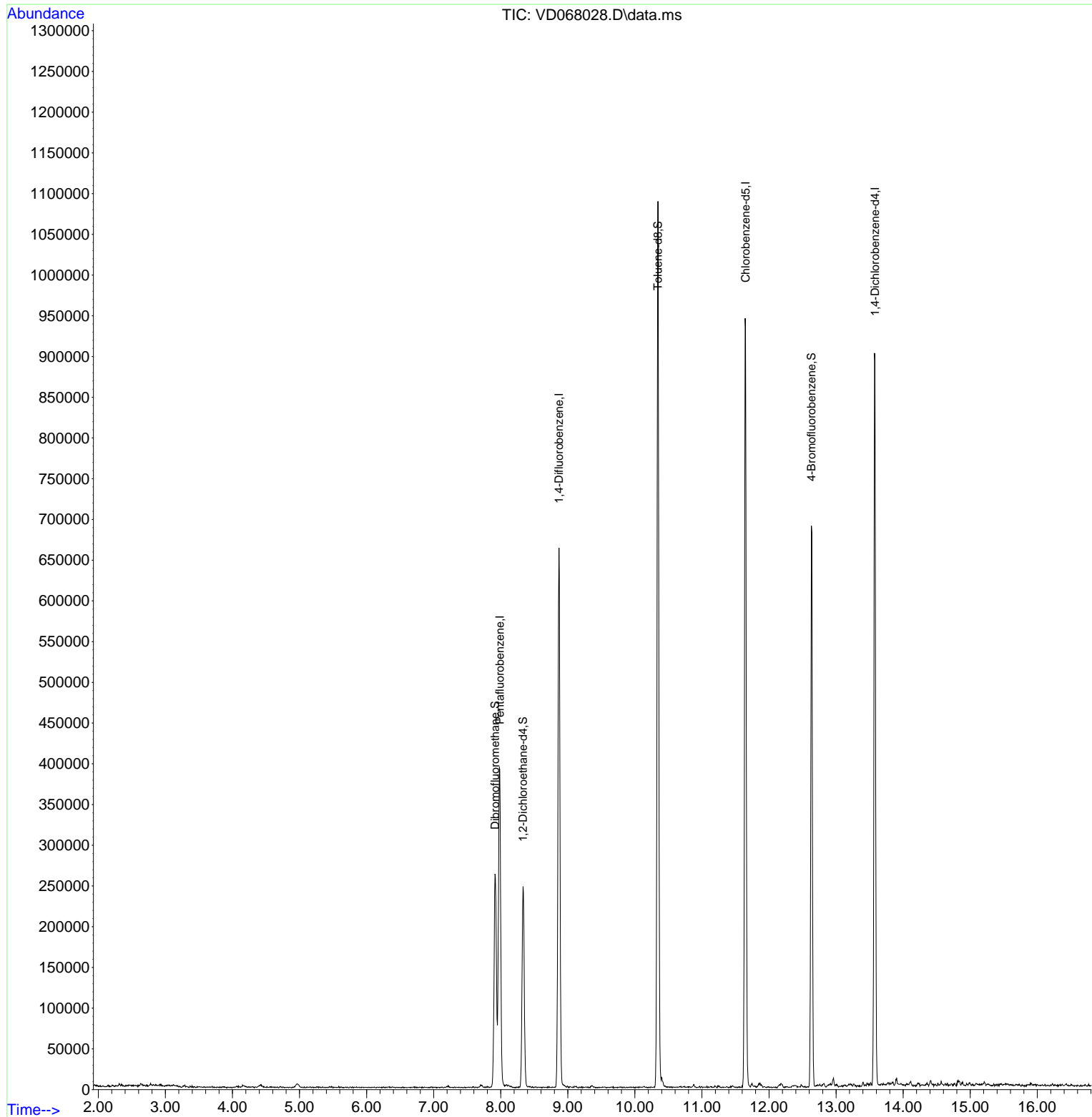
Target Compounds Qvalue

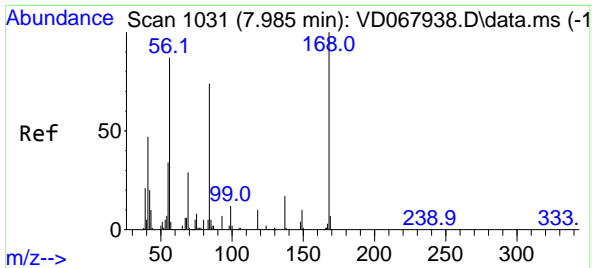
(#) = qualifier out of range (m) = manual integration (+) = signals summed

Data Path : Z:\voasrv\HPCHEM1\MSVOA_D\Data\VD010721\
 Data File : VD068028.D
 Acq On : 07 Jan 2021 12:29
 Operator : VA/SY
 Sample : M1021-01
 Misc : 6.52G/5.00ml/MSVOA_D/SOIL
 ALS Vial : 7 Sample Multiplier: 1

Instrument :
 MSVOA_D
 ClientSampleId :
 OK-02-010621

Quant Time: Jan 08 00:14:07 2021
 Quant Method : Z:\voasrv\HPCHEM1\MSVOA_D\Method\82D122220S.M
 Quant Title : SW846 8260
 QLast Update : Wed Dec 23 07:34:16 2020
 Response via : Initial Calibration

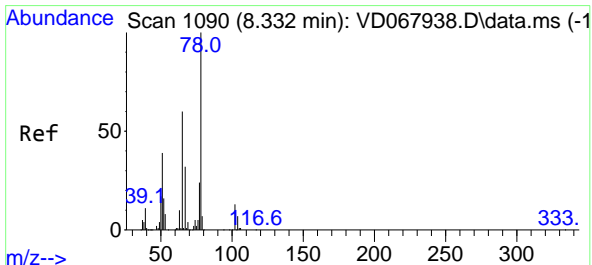
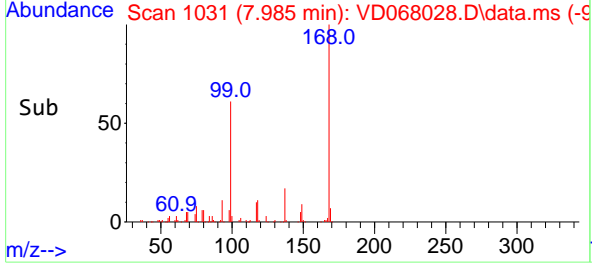
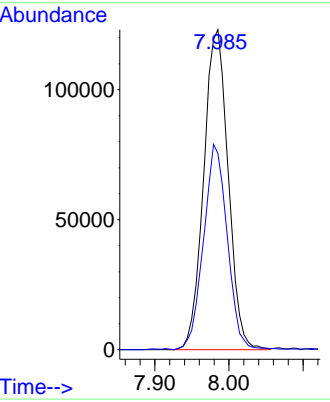
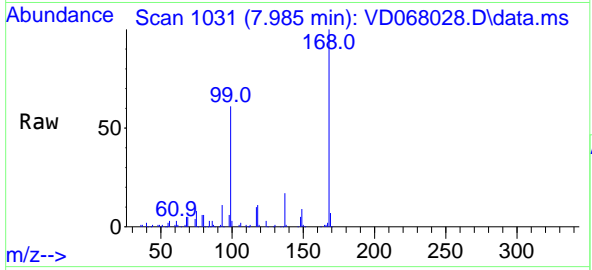




#1
 Pentafluorobenzene
 Concen: 50.00 ug/l
 RT: 7.985 min Scan# 1031
 Delta R.T. -0.000 min
 Lab File: VD068028.D
 Acq: 07 Jan 2021 12:29

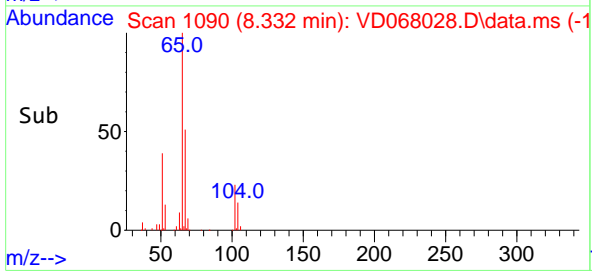
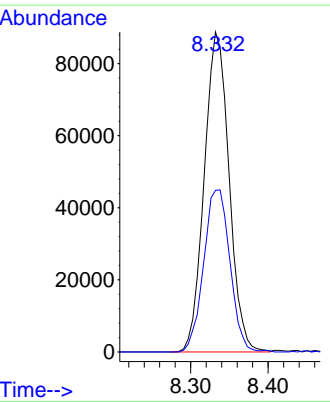
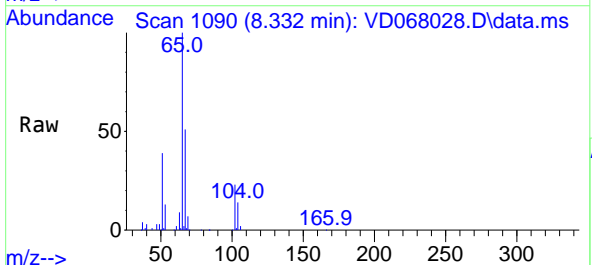
Instrument :
 MSVOA_D
ClientSampled :
 OK-02-010621

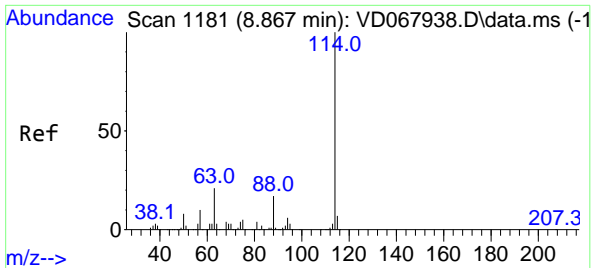
Tgt Ion:168 Resp: 282412
 Ion Ratio Lower Upper
 168 100
 99 61.2 48.0 72.0



#33
 1,2-Dichloroethane-d4
 Concen: 64.81 ug/l
 RT: 8.332 min Scan# 1090
 Delta R.T. 0.000 min
 Lab File: VD068028.D
 Acq: 07 Jan 2021 12:29

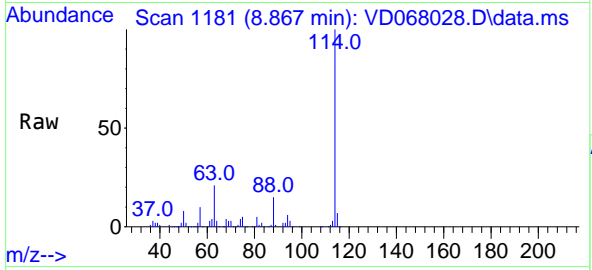
Tgt Ion: 65 Resp: 197637
 Ion Ratio Lower Upper
 65 100
 67 53.7 0.0 110.0





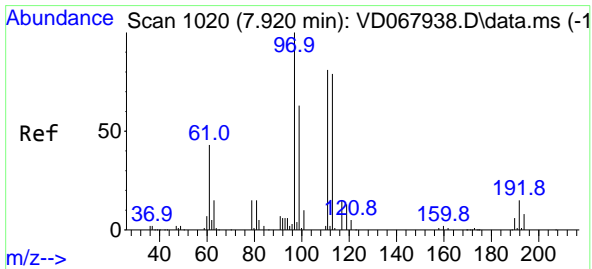
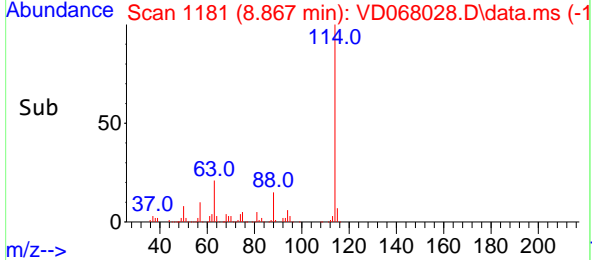
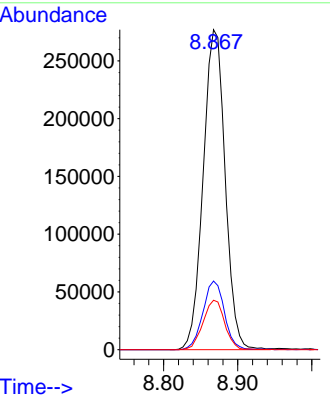
#34
 1,4-Difluorobenzene
 Concen: 50.00 ug/l
 RT: 8.867 min Scan# 1181
 Delta R.T. 0.000 min
 Lab File: VD068028.D
 Acq: 07 Jan 2021 12:29

Instrument : MSVOA_D
 ClientSampled : OK-02-010621

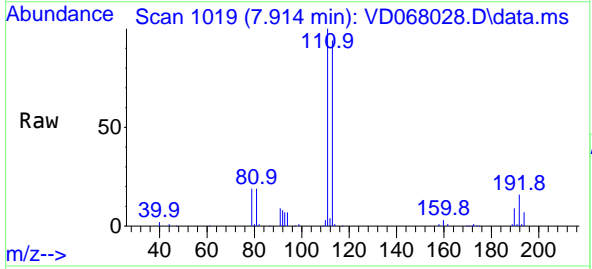


Tgt Ion:114 Resp: 570755

| Ion | Ratio | Lower | Upper |
|-----|-------|-------|-------|
| 114 | 100 | | |
| 63 | 21.4 | 0.0 | 41.4 |
| 88 | 15.4 | 0.0 | 33.2 |

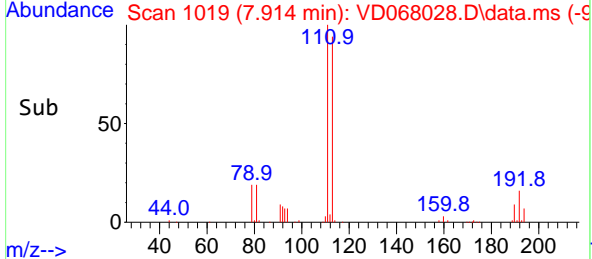
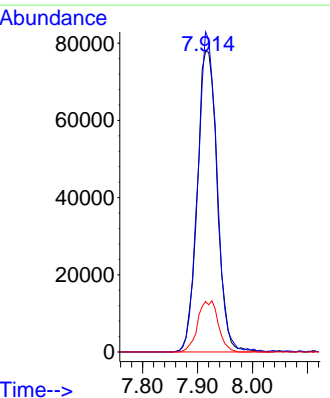


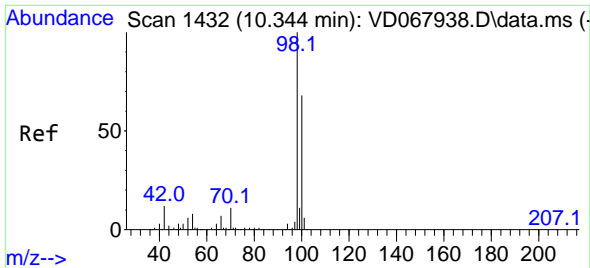
#35
 Dibromofluoromethane
 Concen: 54.63 ug/l
 RT: 7.914 min Scan# 1019
 Delta R.T. -0.006 min
 Lab File: VD068028.D
 Acq: 07 Jan 2021 12:29



Tgt Ion:113 Resp: 196476

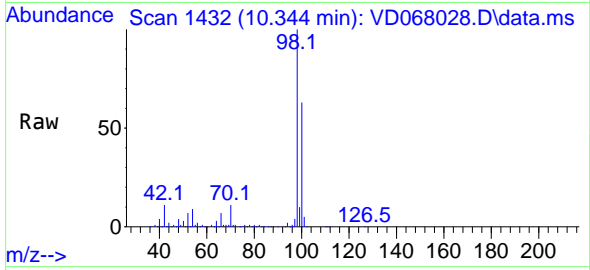
| Ion | Ratio | Lower | Upper |
|-----|-------|-------|-------|
| 113 | 100 | | |
| 111 | 101.6 | 79.3 | 118.9 |
| 192 | 17.5 | 14.5 | 21.7 |



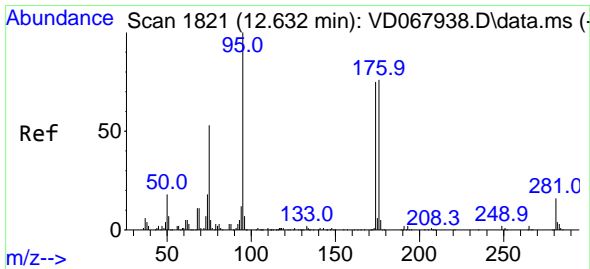
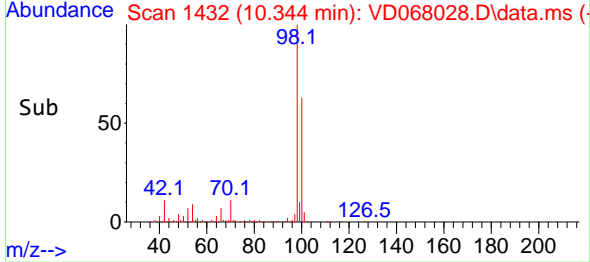
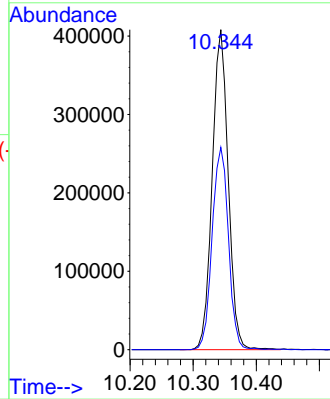


#50
 Toluene-d8
 Concen: 53.00 ug/l
 RT: 10.344 min Scan# 1432
 Delta R.T. 0.000 min
 Lab File: VD068028.D
 Acq: 07 Jan 2021 12:29

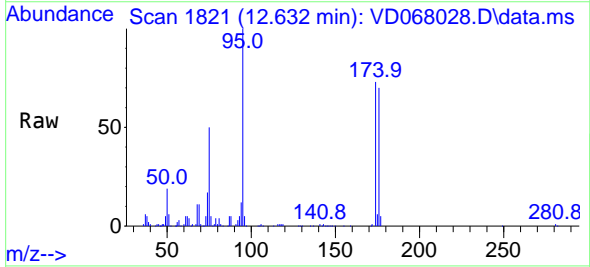
Instrument :
 MSVOA_D
 ClientSampled :
 OK-02-010621



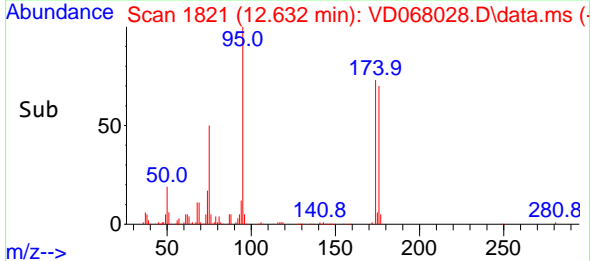
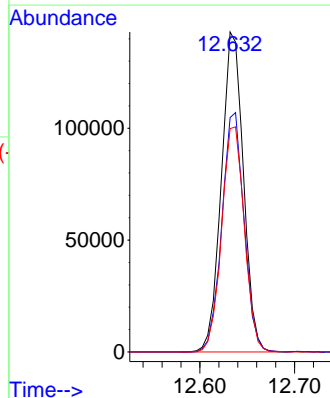
Tgt Ion: 98 Resp: 716428
 Ion Ratio Lower Upper
 98 100
 100 64.5 52.5 78.7

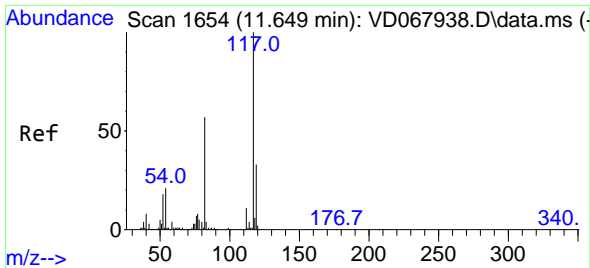


#62
 4-Bromofluorobenzene
 Concen: 49.99 ug/l
 RT: 12.632 min Scan# 1821
 Delta R.T. 0.000 min
 Lab File: VD068028.D
 Acq: 07 Jan 2021 12:29



Tgt Ion: 95 Resp: 231142
 Ion Ratio Lower Upper
 95 100
 174 75.7 0.0 150.6
 176 72.6 0.0 151.2



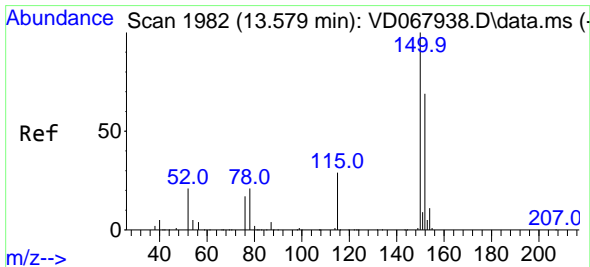
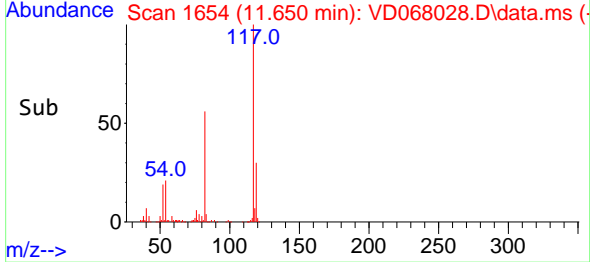
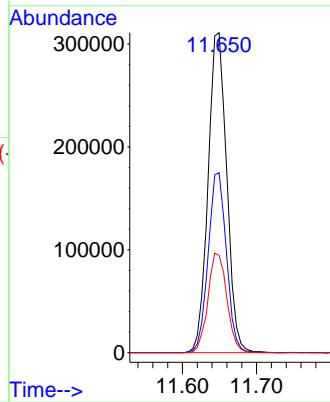
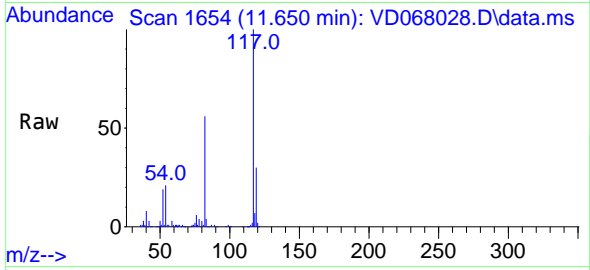


#63
 Chlorobenzene-d5
 Concen: 50.00 ug/l
 RT: 11.650 min Scan# 1654
 Delta R.T. 0.000 min
 Lab File: VD068028.D
 Acq: 07 Jan 2021 12:29

Instrument :
 MSVOA_D
 ClientSampled :
 OK-02-010621

Tgt Ion:117 Resp: 544183

| Ion | Ratio | Lower | Upper |
|-----|-------|-------|-------|
| 117 | 100 | | |
| 82 | 56.2 | 45.4 | 68.0 |
| 119 | 30.4 | 26.7 | 40.1 |



#72
 1,4-Dichlorobenzene-d4
 Concen: 50.00 ug/l
 RT: 13.579 min Scan# 1982
 Delta R.T. 0.000 min
 Lab File: VD068028.D
 Acq: 07 Jan 2021 12:29

Tgt Ion:152 Resp: 230434

| Ion | Ratio | Lower | Upper |
|-----|-------|-------|-------|
| 152 | 100 | | |
| 115 | 61.2 | 29.3 | 88.0 |
| 150 | 159.0 | 0.0 | 340.0 |

