

Data Path : Z:\voasrv\HPCHEM1\MSVOA_D\Data\VD012021\
 Data File : VD068114.D
 Acq On : 20 Jan 2021 15:46
 Operator : VA/SY
 Sample : M1160-13
 Misc : 5.60G/5.00ml/MSVOA_D/SOIL
 ALS Vial : 12 Sample Multiplier: 1

Instrument :
 MSVOA_D
 ClientSampleId :
 BASIN-6

Integration Parameters: RTEINT.P
 Integrator: RTE
 Smoothing : ON Filtering: 5
 Sampling : 1 Min Area: 3 % of largest Peak
 Start Thrs: 0.2 Max Peaks: 100
 Stop Thrs : 0 Peak Location: TOP

If leading or trailing edge < 100 prefer < Baseline drop else tangent >
 Peak separation: 5

Method : Z:\voasrv\HPCHEM1\MSVOA_D\Method\82D011921S.M
 Title : SW846 8260

Signal : TIC: VD068114.D\data.ms

peak #	R.T. min	first scan	max scan	last scan	PK TY	peak height	corr. area	corr. % max.	% of total
1	2.232	42	53	55	rBV6	17482	45366	1.31%	0.250%
2	4.973	509	519	530	rBV5	18385	61228	1.77%	0.338%
3	7.920	1009	1020	1025	rBV2	403318	992573	28.67%	5.478%
4	7.985	1025	1031	1042	rVB	790155	1762408	50.91%	9.726%
5	8.338	1075	1091	1102	rBV	364756	834677	24.11%	4.606%
6	8.867	1171	1181	1194	rBV	1155552	2369632	68.46%	13.077%
7	10.344	1423	1432	1448	rBV	1925984	3461567	100.00%	19.104%
8	11.643	1644	1653	1664	rBV	1735043	3094356	89.39%	17.077%
9	12.632	1812	1821	1830	rBV	1461506	2436503	70.39%	13.447%
10	13.573	1974	1981	1992	rVB	1837570	3061658	88.45%	16.897%

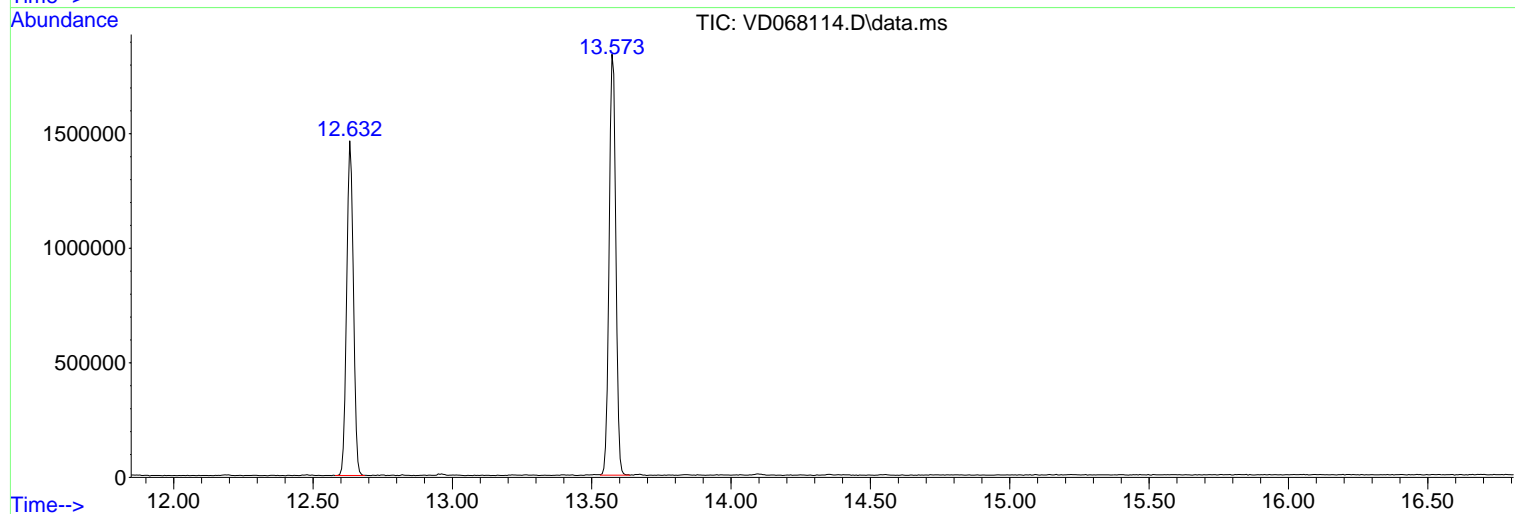
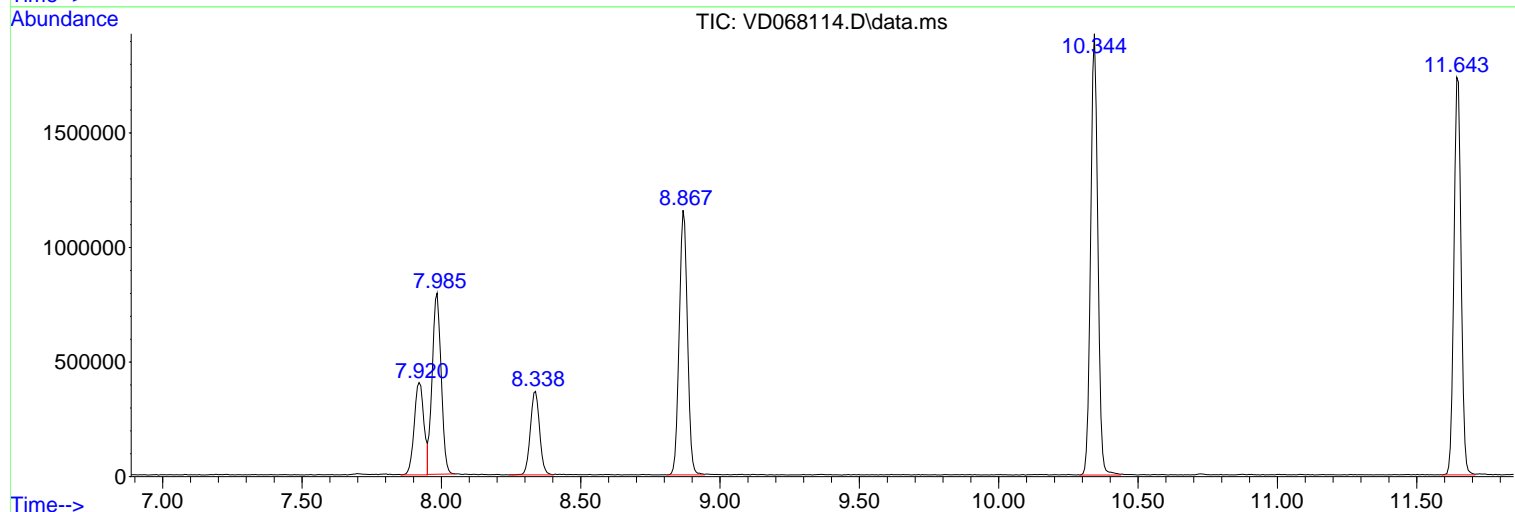
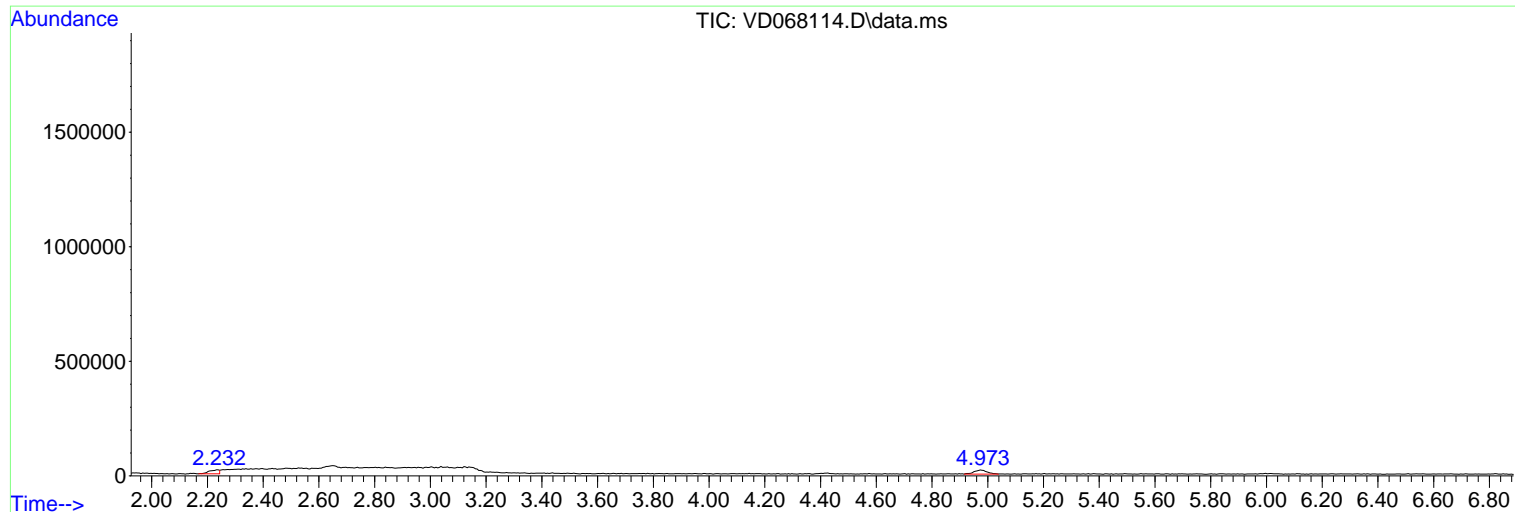
Sum of corrected areas: 18119968

Data Path : Z:\voasrv\HPCHEM1\MSVOA_D\Data\VD012021\
 Data File : VD068114.D
 Acq On : 20 Jan 2021 15:46
 Operator : VA/SY
 Sample : M1160-13
 Misc : 5.60G/5.00ml/MSVOA_D/SOIL
 ALS Vial : 12 Sample Multiplier: 1

Instrument :
 MSVOA_D
 ClientSampleId :
 BASIN-6

Quant Method : Z:\voasrv\HPCHEM1\MSVOA_D\Method\82D011921S.M
 Quant Title : SW846 8260

TIC Library : C:\Database\NIST11.L
 TIC Integration Parameters: LSCINT.P



Library Search Compound Report

Data Path : Z:\voasrv\HPCHEM1\MSVOA_D\Data\VD012021\
Data File : VD068114.D
Acq On : 20 Jan 2021 15:46
Operator : VA/SY
Sample : M1160-13
Misc : 5.60G/5.00ml/MSVOA_D/SOIL
ALS Vial : 12 Sample Multiplier: 1

Instrument :
MSVOA_D
ClientSampleId :
BASIN-6

Quant Method : Z:\voasrv\HPCHEM1\MSVOA_D\Method\82D011921S.M
Quant Title : SW846 8260

TIC Library : C:\Database\NIST11.L
TIC Integration Parameters: LSCINT.P

No Library Search Compounds Detected

Data Path : Z:\voasrv\HPCHEM1\MSVOA_D\Data\VD012021\
Data File : VD068114.D
Acq On : 20 Jan 2021 15:46
Operator : VA/SY
Sample : M1160-13
Misc : 5.60G/5.00ml/MSVOA_D/SOIL
ALS Vial : 12 Sample Multiplier: 1

Instrument :
MSVOA_D
ClientSampled :
BASIN-6

Quant Method : Z:\voasrv\HPCHEM1\MSVOA_D\Method\82D011921S.M
Quant Title : SW846 8260

TIC Library : C:\Database\NIST11.L
TIC Integration Parameters: LSCINT.P

TIC Top Hit name	RT	EstConc	Units	Response	--Internal Standard--			
					#	RT	Resp	Conc
