

Data Path : Z:\voasrv\HPCHEM1\MSVOA_D\Data\VD012121\
 Data File : VD068130.D
 Acq On : 21 Jan 2021 14:04
 Operator : VA/SY
 Sample : M1179-07
 Misc : 6.38G/5.00ml/MSVOA_D/SOIL
 ALS Vial : 6 Sample Multiplier: 1

Instrument :
 MSVOA_D
 ClientSampleId :
 HS-TP4

Quant Time: Jan 22 00:08:55 2021
 Quant Method : Z:\voasrv\HPCHEM1\MSVOA_D\Method\82D011921S.M
 Quant Title : SW846 8260
 QLast Update : Tue Jan 19 13:19:08 2021
 Response via : Initial Calibration

Compound	R.T.	QIon	Response	Conc	Units	Dev(Min)

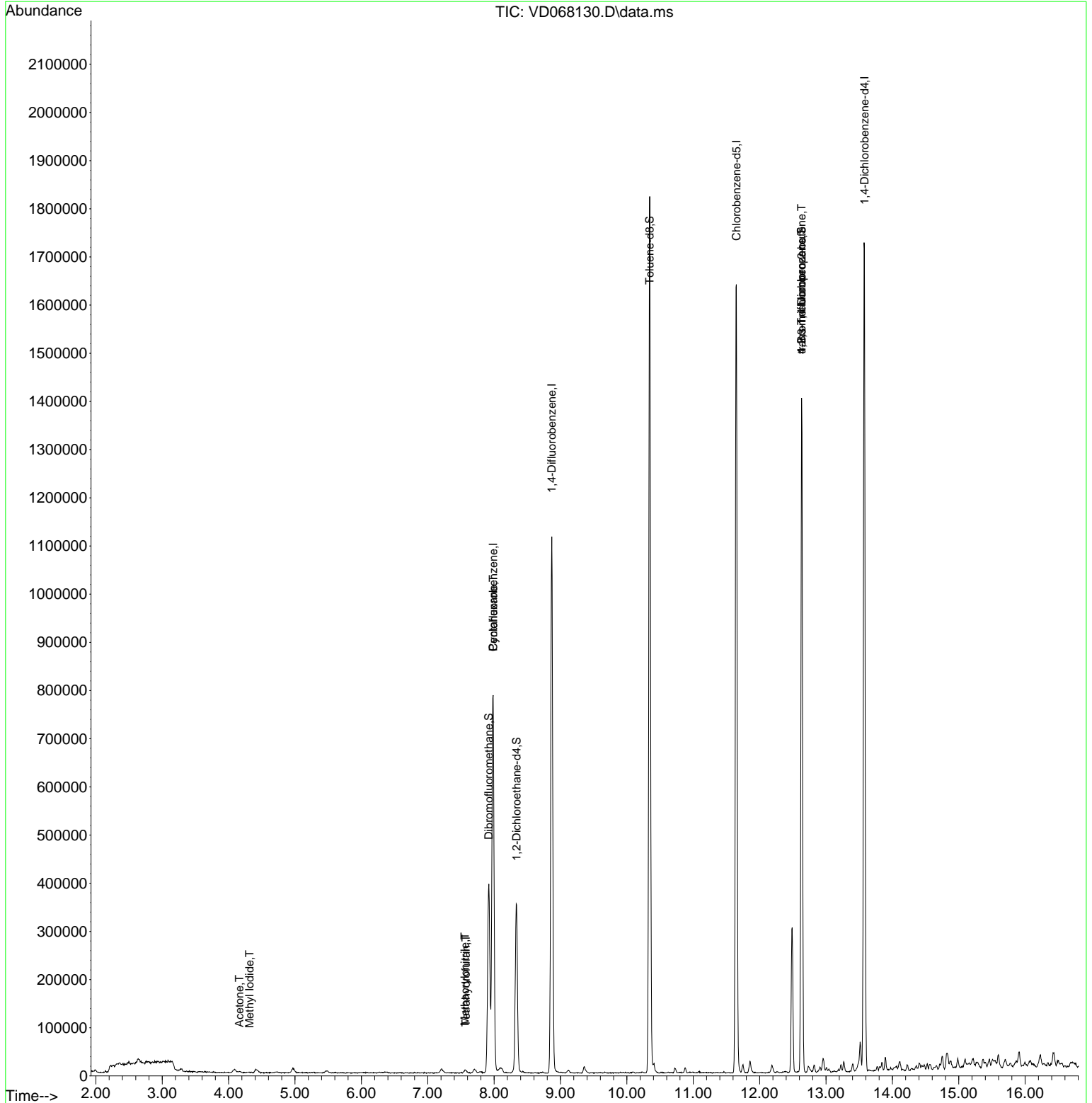
Internal Standards						
1) Pentafluorobenzene	7.985	168	595572	50.00	ug/l	0.00
34) 1,4-Difluorobenzene	8.867	114	1009708	50.00	ug/l	0.00
63) Chlorobenzene-d5	11.650	117	990593	50.00	ug/l	0.00
72) 1,4-Dichlorobenzene-d4	13.579	152	467861	50.00	ug/l	0.00
System Monitoring Compounds						
33) 1,2-Dichloroethane-d4	8.338	65	287401	50.44	ug/l	0.00
Spiked Amount	50.000	Range	50 - 163	Recovery	=	100.88%
35) Dibromofluoromethane	7.920	113	286571	51.34	ug/l	0.00
Spiked Amount	50.000	Range	54 - 147	Recovery	=	102.68%
50) Toluene-d8	10.344	98	1250777	56.02	ug/l	0.00
Spiked Amount	50.000	Range	49 - 140	Recovery	=	112.04%
62) 4-Bromofluorobenzene	12.632	95	479416	59.62	ug/l	0.00
Spiked Amount	50.000	Range	25 - 144	Recovery	=	119.24%
Target Compounds						
						Qvalue
10) Methyl Iodide	4.315	142	1583	3.36	ug/l #	70
11) Tert butyl alcohol	5.221	59	115	Below	Cal #	74
16) Acetone	4.162	43	3442	3.38	ug/l	97
20) Methylene Chloride	4.968	84	7960	Below	Cal	87
29) Tetrahydrofuran	7.573	42	5134	5.17	ug/l	89
31) Cyclohexane	7.985	56	16963	1.38	ug/l #	17
41) Methacrylonitrile	7.562	41	2665	1.23	ug/l #	43
76) 1,2,3-Trichloropropane	12.632	75	244990	54.16	ug/l #	100
81) trans-1,4-Dichloro-2-b...	12.632	75	244990	109.59	ug/l #	13

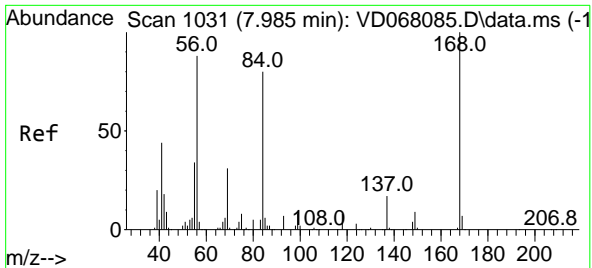
(#) = qualifier out of range (m) = manual integration (+) = signals summed

Data Path : Z:\voasrv\HPCHEM1\MSVOA_D\Data\VD012121\
 Data File : VD068130.D
 Acq On : 21 Jan 2021 14:04
 Operator : VA/SY
 Sample : M1179-07
 Misc : 6.38G/5.00ml/MSVOA_D/SOIL
 ALS Vial : 6 Sample Multiplier: 1

Instrument :
 MSVOA_D
 ClientSampled :
 HS-TP4

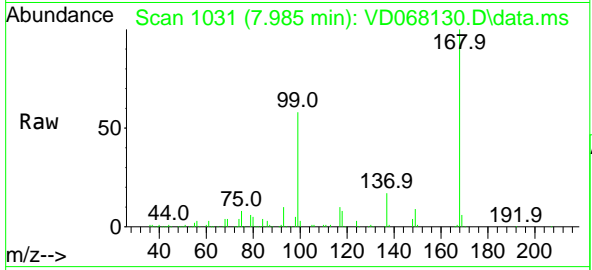
Quant Time: Jan 22 00:08:55 2021
 Quant Method : Z:\voasrv\HPCHEM1\MSVOA_D\Method\82D011921S.M
 Quant Title : SW846 8260
 QLast Update : Tue Jan 19 13:19:08 2021
 Response via : Initial Calibration



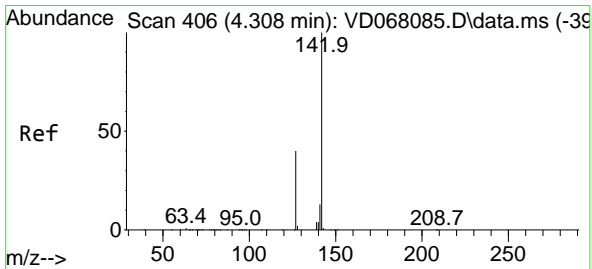
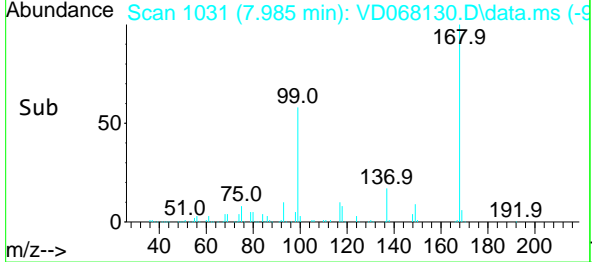
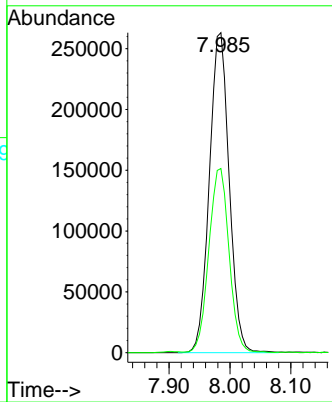


#1
 Pentafluorobenzene
 Concen: 50.00 ug/l
 RT: 7.985 min Scan# 1031
 Delta R.T. 0.000 min
 Lab File: VD068130.D
 Acq: 21 Jan 2021 14:04

Instrument :
 MSVOA_D
 ClientSampled :
 HS-TP4

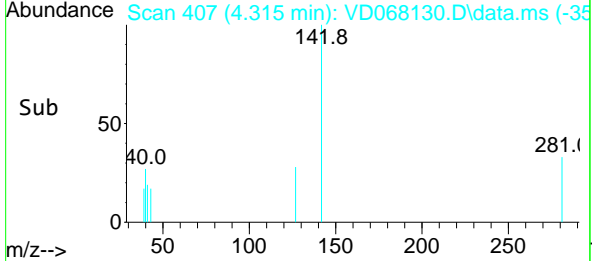
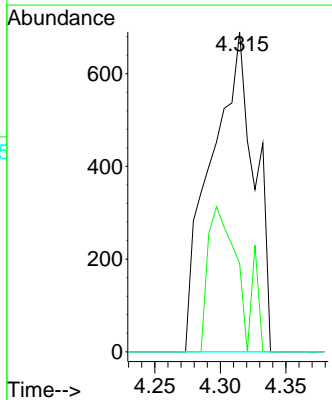
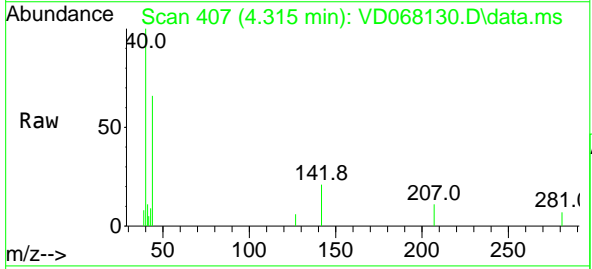


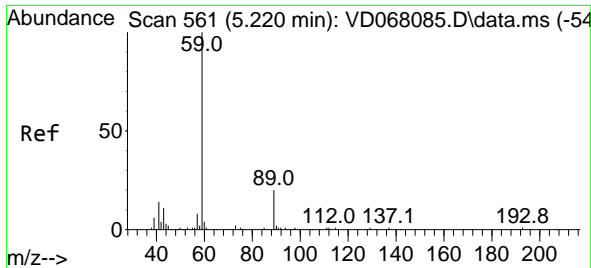
Tgt Ion:168 Resp: 595572
 Ion Ratio Lower Upper
 168 100
 99 57.4 43.5 65.3



#10
 Methyl Iodide
 Concen: 3.36 ug/l
 RT: 4.315 min Scan# 407
 Delta R.T. 0.007 min
 Lab File: VD068130.D
 Acq: 21 Jan 2021 14:04

Tgt Ion:142 Resp: 1583
 Ion Ratio Lower Upper
 142 100
 127 28.0 37.9 56.9#
 141 0.0 11.5 17.3#

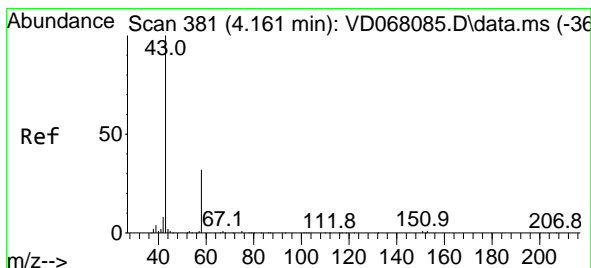
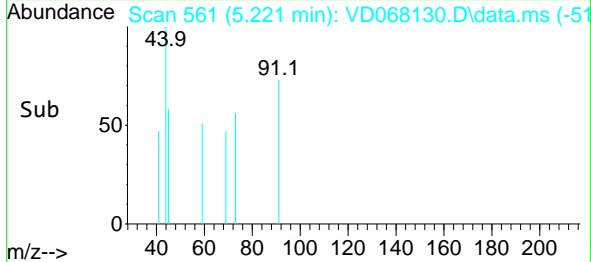
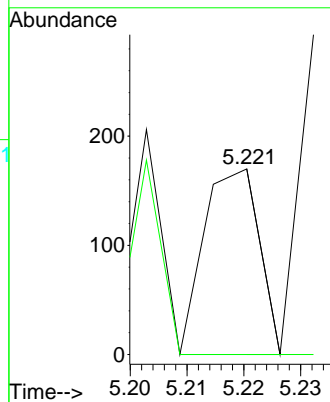
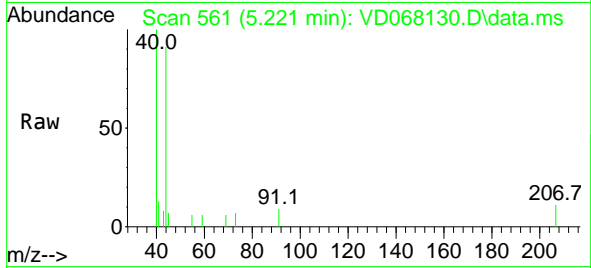




#11
 Tert butyl alcohol
 Concen: Below Cal
 RT: 5.221 min Scan# 561
 Delta R.T. 0.001 min
 Lab File: VD068130.D
 Acq: 21 Jan 2021 14:04

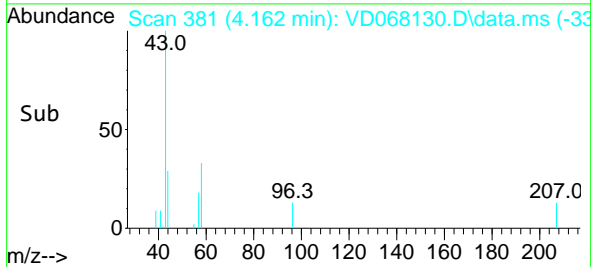
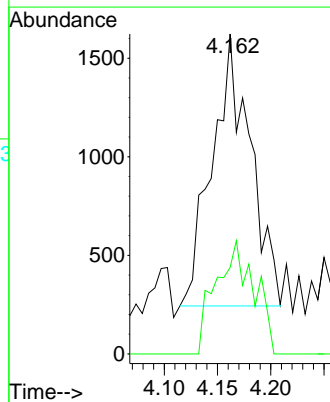
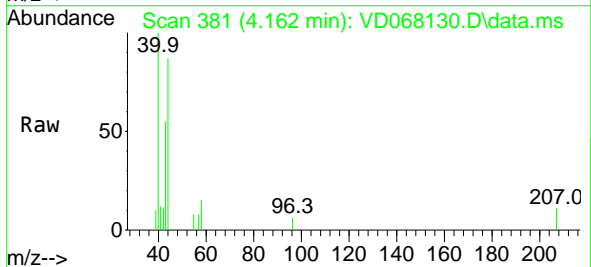
Instrument :
 MSVOA_D
 ClientSampled :
 HS-TP4

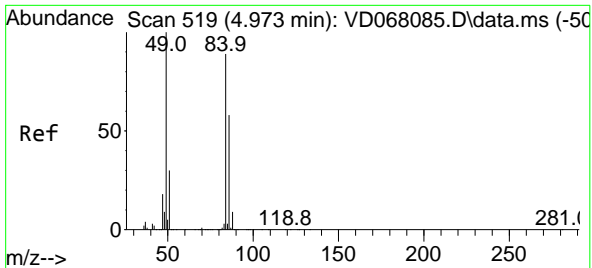
Tgt Ion: 59 Resp: 115
 Ion Ratio Lower Upper
 59 100
 57 0.0 7.4 11.2#



#16
 Acetone
 Concen: 3.38 ug/l
 RT: 4.162 min Scan# 381
 Delta R.T. 0.000 min
 Lab File: VD068130.D
 Acq: 21 Jan 2021 14:04

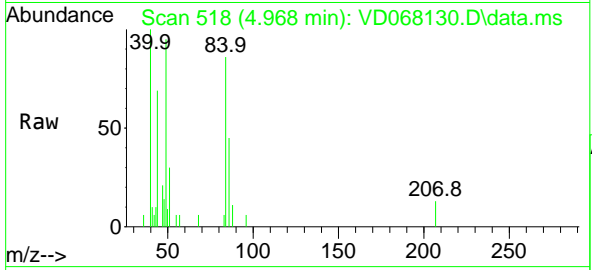
Tgt Ion: 43 Resp: 3442
 Ion Ratio Lower Upper
 43 100
 58 31.7 24.2 36.4





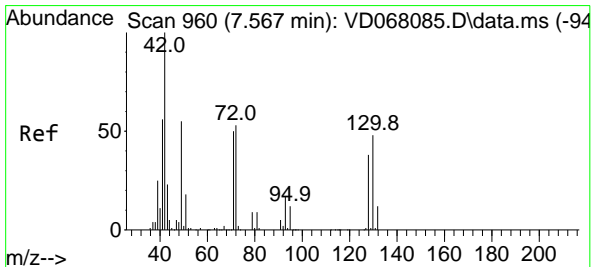
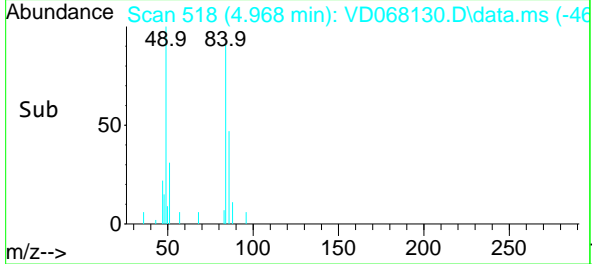
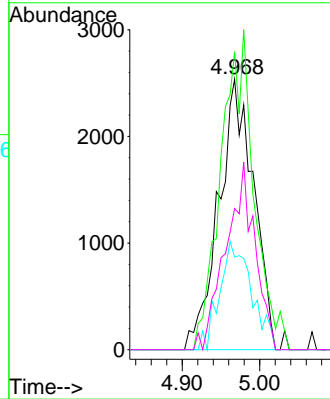
#20
Methylene Chloride
Concen: Below Cal
RT: 4.968 min Scan# 518
Delta R.T. -0.005 min
Lab File: VD068130.D
Acq: 21 Jan 2021 14:04

Instrument :
MSVOA_D
ClientSampled :
HS-TP4

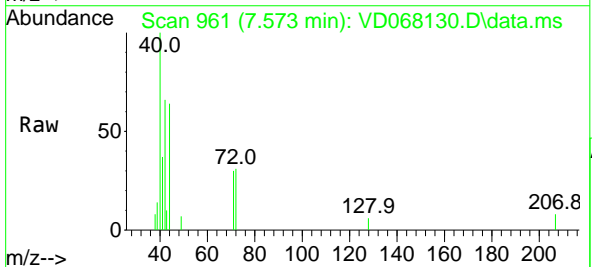


Tgt Ion: 84 Resp: 7960

Ion	Ratio	Lower	Upper
84	100		
49	110.2	77.4	116.2
51	34.2	26.1	39.1
86	52.2	51.8	77.8

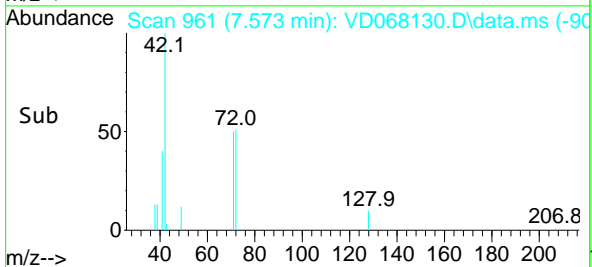
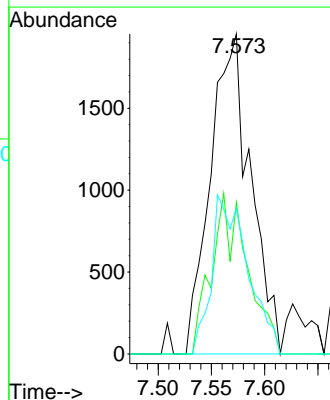


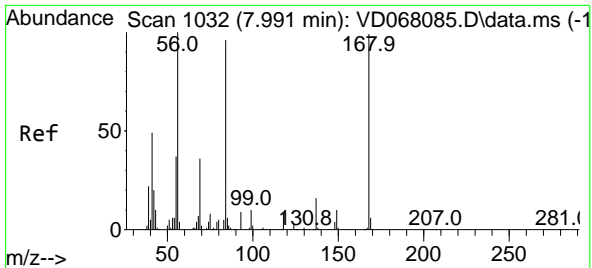
#29
Tetrahydrofuran
Concen: 5.17 ug/l
RT: 7.573 min Scan# 961
Delta R.T. 0.006 min
Lab File: VD068130.D
Acq: 21 Jan 2021 14:04



Tgt Ion: 42 Resp: 5134

Ion	Ratio	Lower	Upper
42	100		
72	44.9	43.4	65.0
71	44.5	40.8	61.2

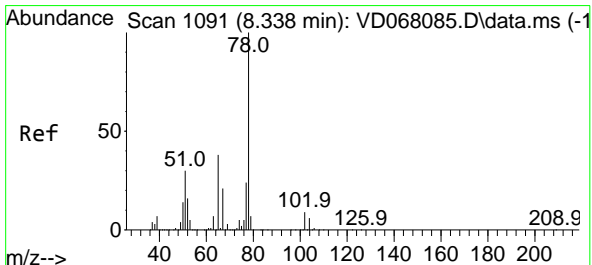
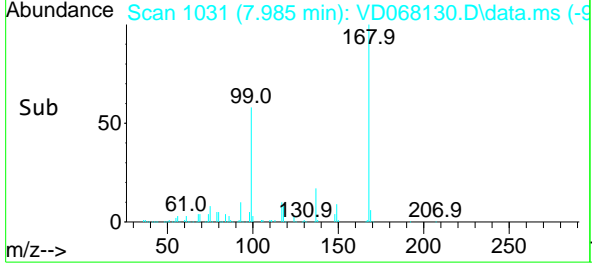
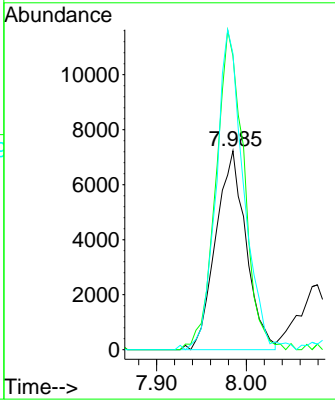
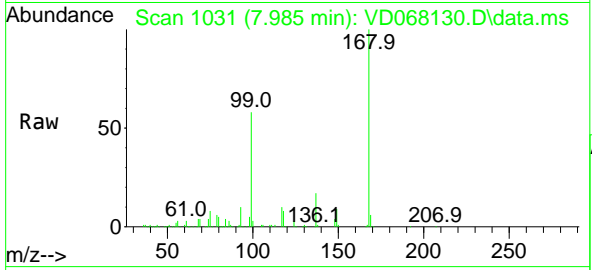




#31
 Cyclohexane
 Concen: 1.38 ug/l
 RT: 7.985 min Scan# 1031
 Delta R.T. -0.005 min
 Lab File: VD068130.D
 Acq: 21 Jan 2021 14:04

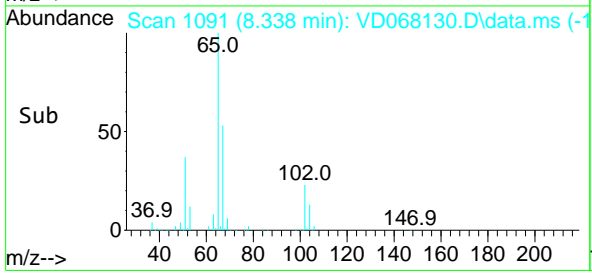
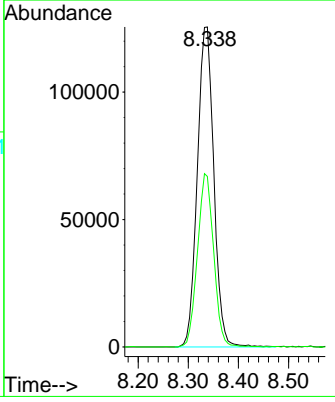
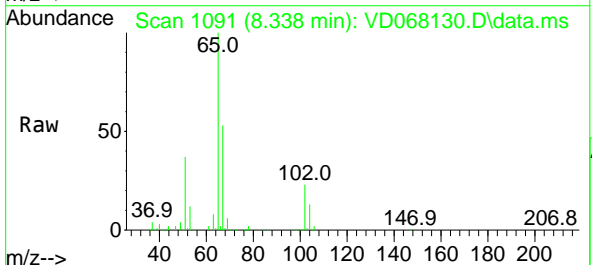
Instrument :
 MSVOA_D
ClientSampled :
 HS-TP4

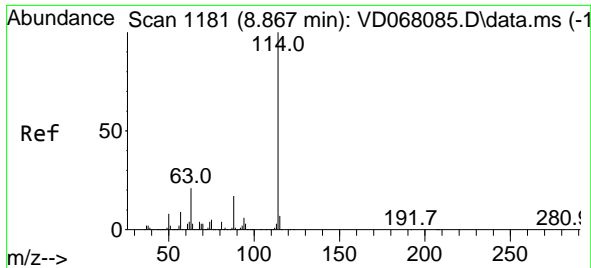
Tgt Ion	Resp	Lower	Upper
56	16963		
69	147.6	30.1	45.1#
84	148.8	82.1	123.1#



#33
 1,2-Dichloroethane-d4
 Concen: 50.44 ug/l
 RT: 8.338 min Scan# 1091
 Delta R.T. 0.000 min
 Lab File: VD068130.D
 Acq: 21 Jan 2021 14:04

Tgt Ion	Resp	Lower	Upper
65	287401		
67	53.0	0.0	105.0



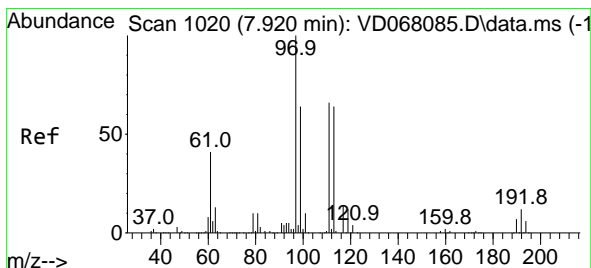
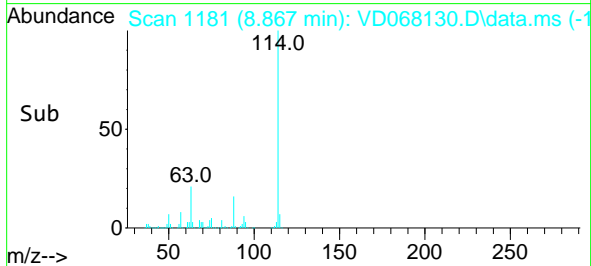
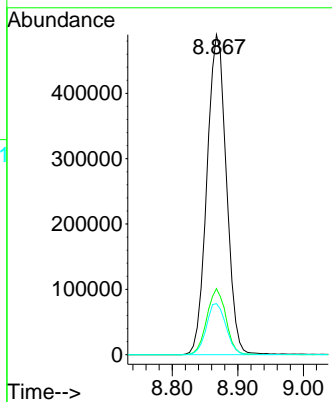
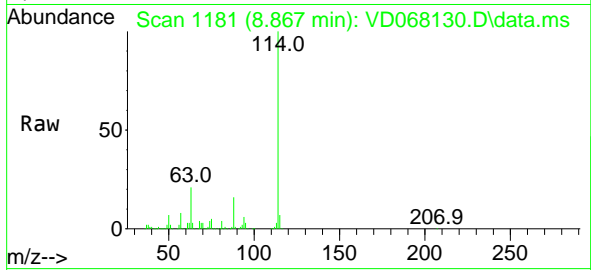


#34
 1,4-Difluorobenzene
 Concen: 50.00 ug/l
 RT: 8.867 min Scan# 1181
 Delta R.T. 0.000 min
 Lab File: VD068130.D
 Acq: 21 Jan 2021 14:04

Instrument :
 MSVOA_D
 ClientSampled :
 HS-TP4

Tgt Ion:114 Resp: 1009708

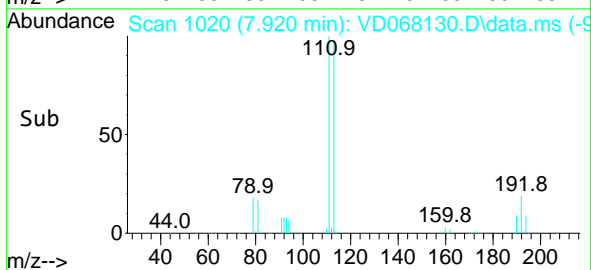
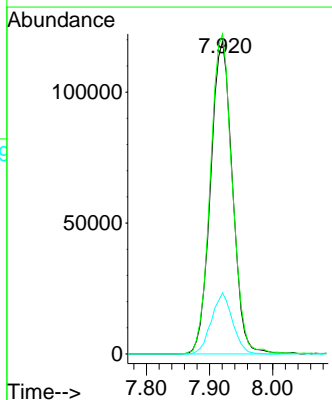
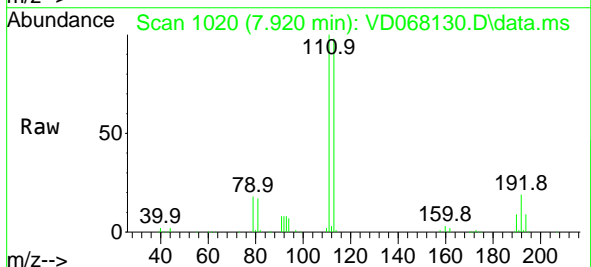
Ion	Ratio	Lower	Upper
114	100		
63	20.7	0.0	34.8
88	15.9	0.0	31.6

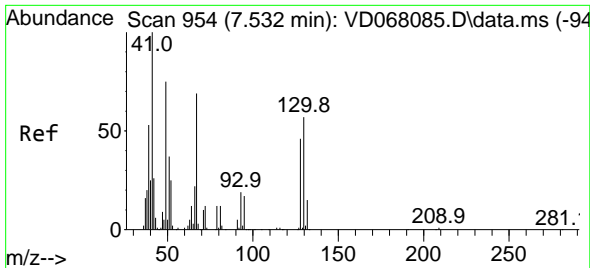


#35
 Dibromofluoromethane
 Concen: 51.34 ug/l
 RT: 7.920 min Scan# 1020
 Delta R.T. 0.000 min
 Lab File: VD068130.D
 Acq: 21 Jan 2021 14:04

Tgt Ion:113 Resp: 286571

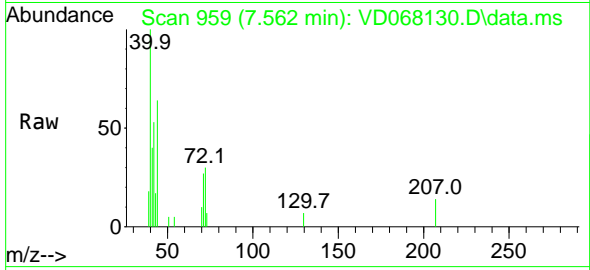
Ion	Ratio	Lower	Upper
113	100		
111	103.0	81.4	122.0
192	18.9	16.1	24.1





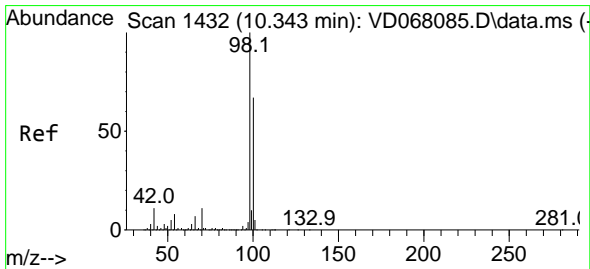
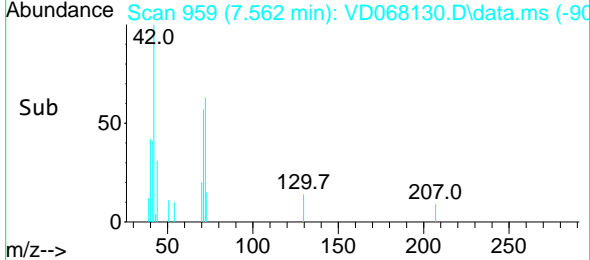
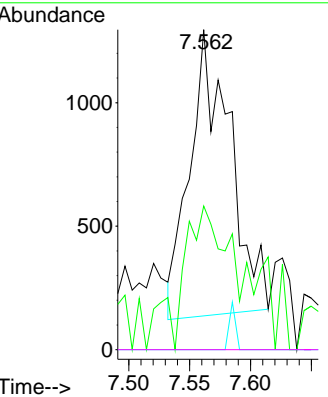
#41
 Methacrylonitrile
 Concen: 1.23 ug/l
 RT: 7.562 min Scan# 959
 Delta R.T. 0.030 min
 Lab File: VD068130.D
 Acq: 21 Jan 2021 14:04

Instrument : MSVOA_D
 ClientSampled : HS-TP4



Tgt Ion: 41 Resp: 2665

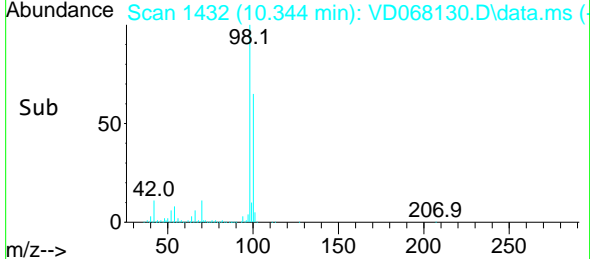
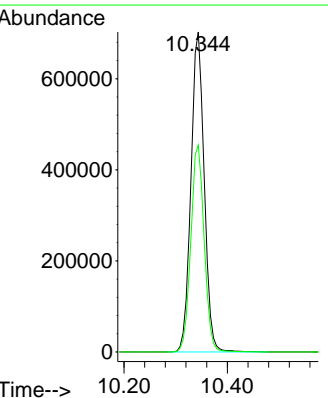
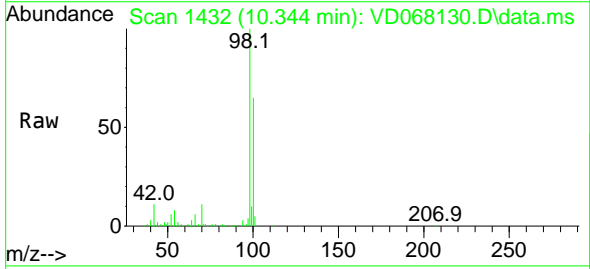
Ion	Ratio	Lower	Upper
41	100		
39	58.6	45.2	67.8
67	0.0	67.4	101.2#
52	0.0	27.5	41.3#

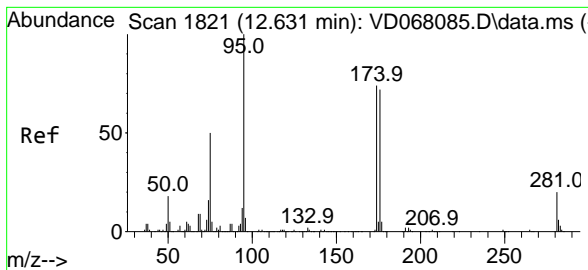


#50
 Toluene-d8
 Concen: 56.02 ug/l
 RT: 10.344 min Scan# 1432
 Delta R.T. 0.000 min
 Lab File: VD068130.D
 Acq: 21 Jan 2021 14:04

Tgt Ion: 98 Resp: 1250777

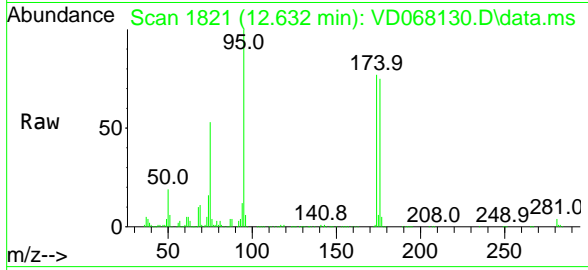
Ion	Ratio	Lower	Upper
98	100		
100	65.1	53.0	79.4





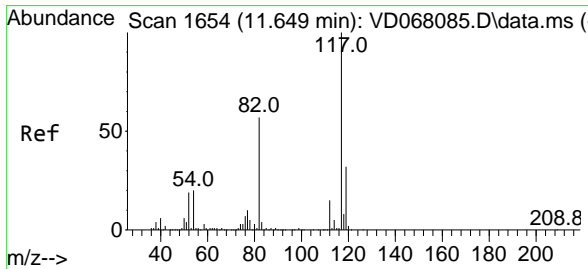
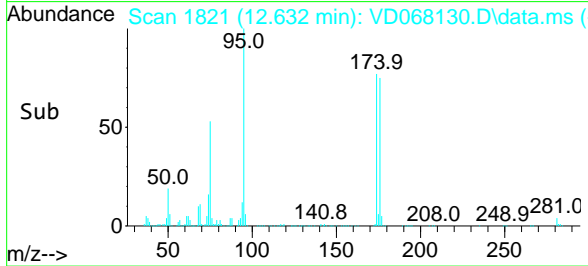
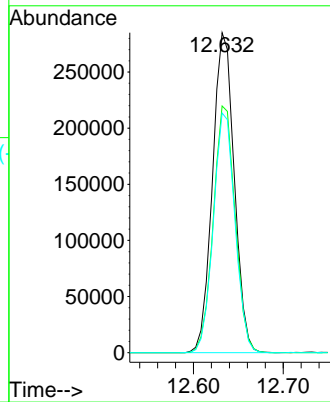
#62
 4-Bromofluorobenzene
 Concen: 59.62 ug/l
 RT: 12.632 min Scan# 1821
 Delta R.T. 0.000 min
 Lab File: VD068130.D
 Acq: 21 Jan 2021 14:04

Instrument :
 MSVOA_D
 ClientSampled :
 HS-TP4

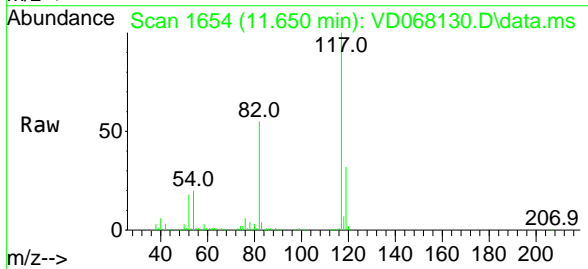


Tgt Ion: 95 Resp: 479416

Ion	Ratio	Lower	Upper
95	100		
174	77.5	0.0	172.4
176	74.6	0.0	168.4

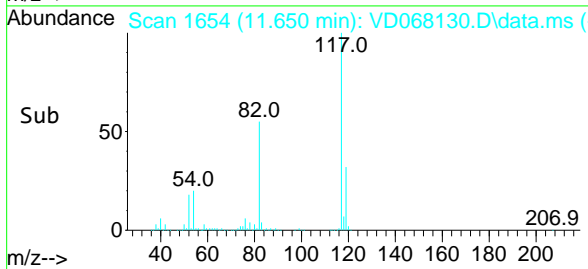
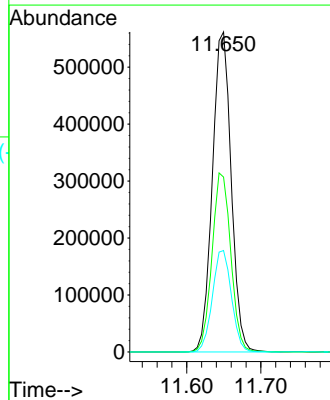


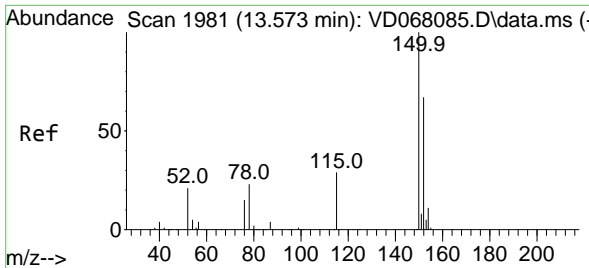
#63
 Chlorobenzene-d5
 Concen: 50.00 ug/l
 RT: 11.650 min Scan# 1654
 Delta R.T. 0.001 min
 Lab File: VD068130.D
 Acq: 21 Jan 2021 14:04



Tgt Ion: 117 Resp: 990593

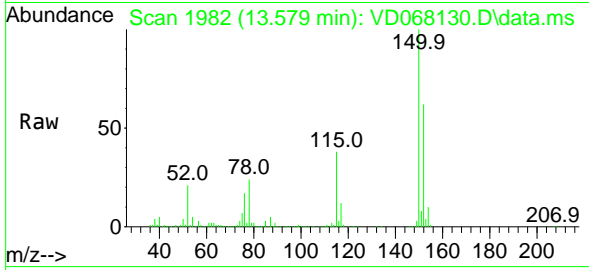
Ion	Ratio	Lower	Upper
117	100		
82	54.6	41.4	62.0
119	31.7	26.1	39.1



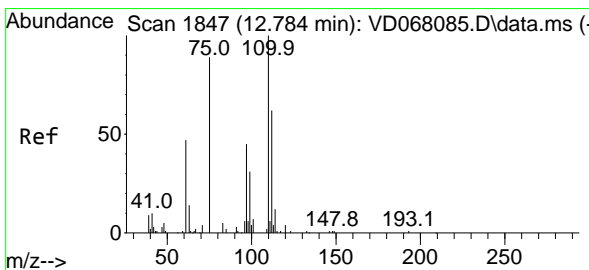
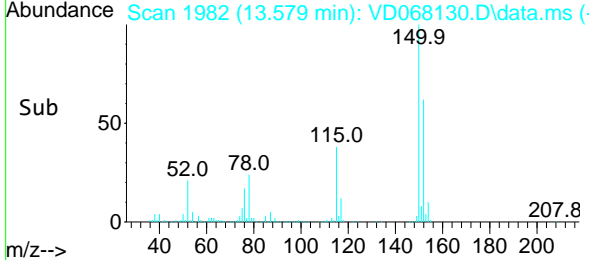
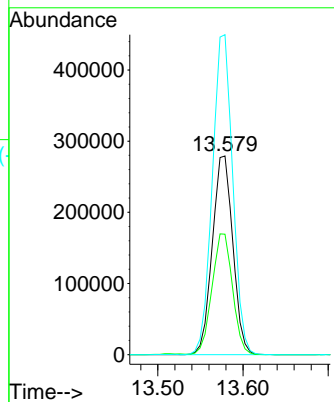


#72
 1,4-Dichlorobenzene-d4
 Concen: 50.00 ug/l
 RT: 13.579 min Scan# 1982
 Delta R.T. 0.006 min
 Lab File: VD068130.D
 Acq: 21 Jan 2021 14:04

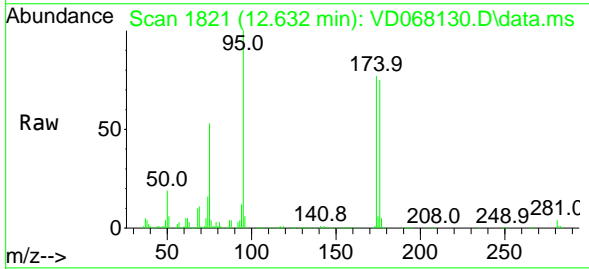
Instrument :
 MSVOA_D
ClientSampled :
 HS-TP4



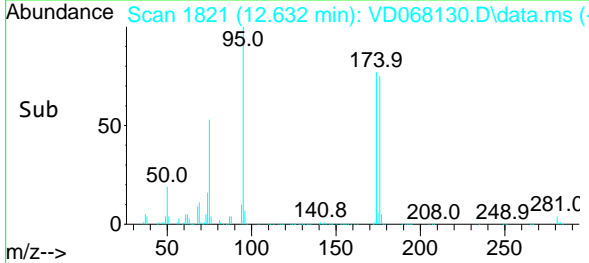
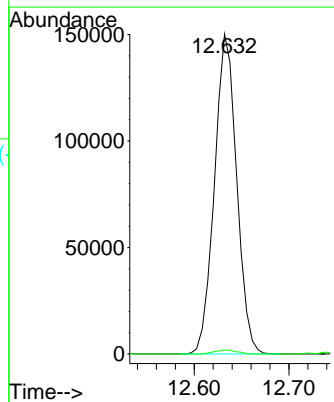
Tgt Ion:152 Resp: 467861
 Ion Ratio Lower Upper
 152 100
 115 60.8 28.9 86.8
 150 159.7 0.0 344.4

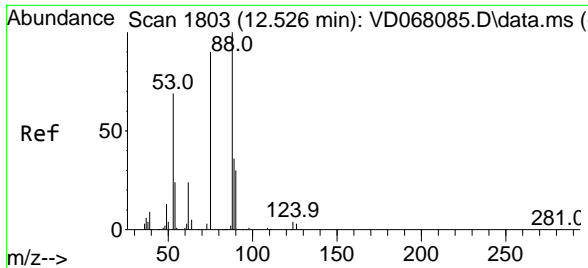


#76
 1,2,3-Trichloropropane
 Concen: 54.16 ug/l
 RT: 12.632 min Scan# 1821
 Delta R.T. -0.153 min
 Lab File: VD068130.D
 Acq: 21 Jan 2021 14:04



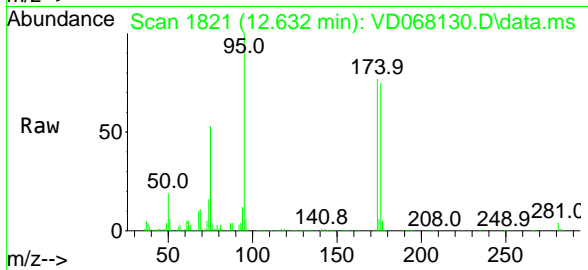
Tgt Ion: 75 Resp: 244990
 Ion Ratio Lower Upper
 75 100
 77 1.2 0.0 0.0#





#81
 trans-1,4-Dichloro-2-butene
 Concen: 109.59 ug/l
 RT: 12.632 min Scan# 1821
 Delta R.T. 0.106 min
 Lab File: VD068130.D
 Acq: 21 Jan 2021 14:04

Instrument :
 MSVOA_D
 ClientSampled :
 HS-TP4



Tgt Ion: 75 Resp: 244990
 Ion Ratio Lower Upper
 75 100
 53 0.0 70.2 105.2#
 89 0.0 40.3 60.5#

