

Data Path : Z:\voasrv\HPCHEM1\MSVOA_D\Data\VD012121\
 Data File : VD068134.D
 Acq On : 21 Jan 2021 15:52
 Operator : VA/SY
 Sample : M1198-02
 Misc : 4.60G/5.00ml/MSVOA_D/SOIL
 ALS Vial : 10 Sample Multiplier: 1

Instrument :
 MSVOA_D
 ClientSampleId :
 TT-037-IDWSO-20210120

Quant Time: Jan 22 00:10:03 2021
 Quant Method : Z:\voasrv\HPCHEM1\MSVOA_D\Method\82D011921S.M
 Quant Title : SW846 8260
 QLast Update : Tue Jan 19 13:19:08 2021
 Response via : Initial Calibration

Compound	R.T.	QIon	Response	Conc	Units	Dev(Min)

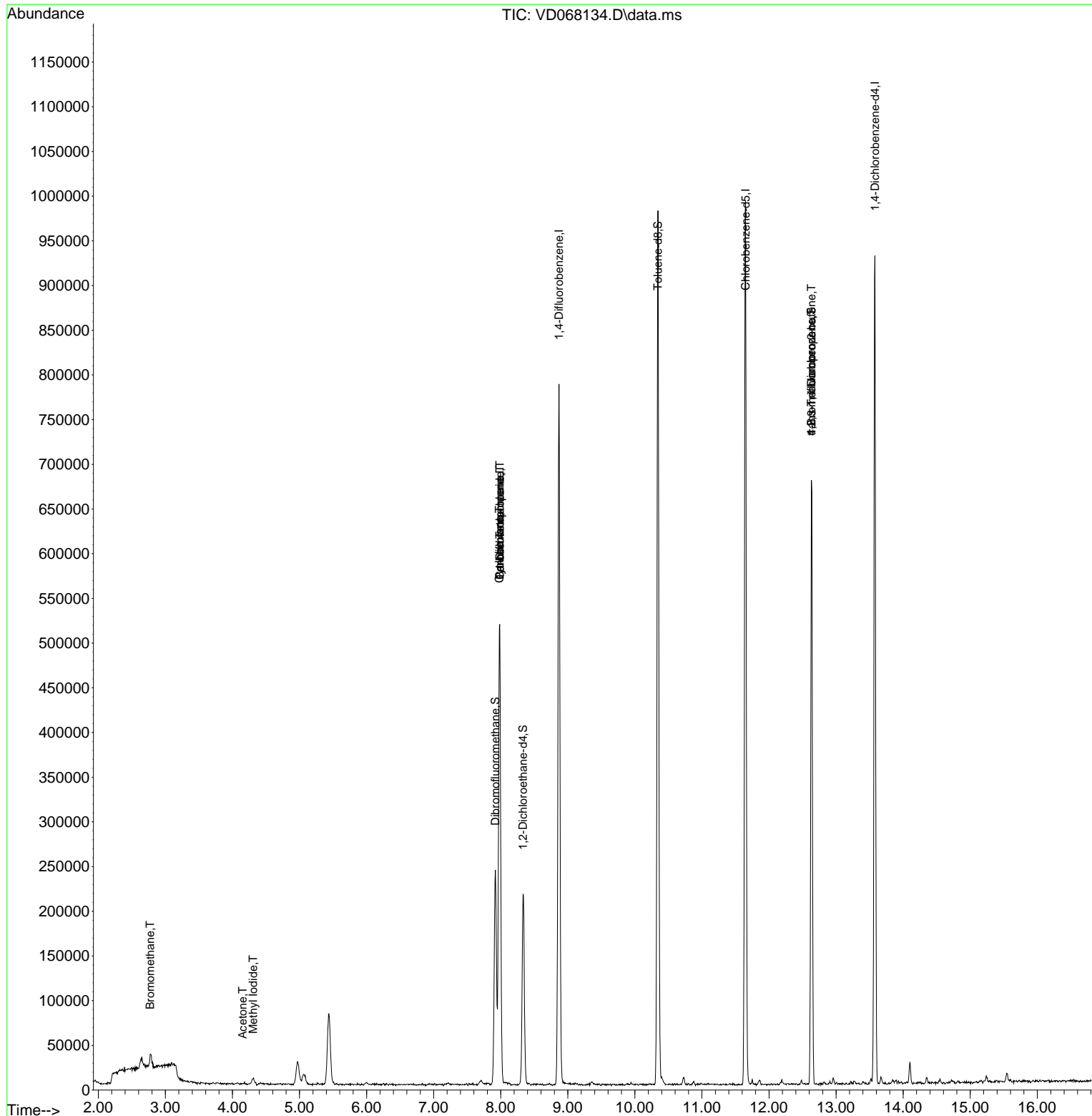
Internal Standards						
1) Pentafluorobenzene	7.985	168	390610	50.00	ug/l	0.00
34) 1,4-Difluorobenzene	8.867	114	691319	50.00	ug/l	0.00
63) Chlorobenzene-d5	11.649	117	593868	50.00	ug/l	0.00
72) 1,4-Dichlorobenzene-d4	13.579	152	251899	50.00	ug/l	0.00
System Monitoring Compounds						
33) 1,2-Dichloroethane-d4	8.332	65	175665	47.01	ug/l	0.00
Spiked Amount	50.000	Range	50 - 163	Recovery	=	94.02%
35) Dibromofluoromethane	7.920	113	173254	45.33	ug/l	0.00
Spiked Amount	50.000	Range	54 - 147	Recovery	=	90.66%
50) Toluene-d8	10.344	98	686867	44.93	ug/l	0.00
Spiked Amount	50.000	Range	49 - 140	Recovery	=	89.86%
62) 4-Bromofluorobenzene	12.632	95	229848	41.75	ug/l	0.00
Spiked Amount	50.000	Range	25 - 144	Recovery	=	83.50%
Target Compounds						
						Qvalue
5) Bromomethane	2.773	94	11724	3.08	ug/l #	79
10) Methyl Iodide	4.309	142	10570	5.23	ug/l	95
16) Acetone	4.150	43	1502	2.25	ug/l #	44
31) Cyclohexane	7.979	56	9492	1.17	ug/l #	22
36) 1,1-Dichloropropene	7.985	75	32800	4.70	ug/l #	46
38) Carbon Tetrachloride	7.985	117	39877	6.11	ug/l #	16
76) 1,2,3-Trichloropropane	12.632	75	117471	48.23	ug/l #	100
81) trans-1,4-Dichloro-2-b...	12.632	75	117471	97.60	ug/l #	13

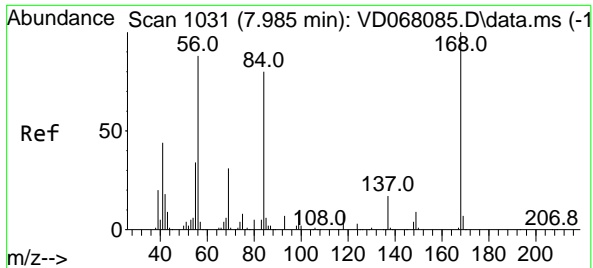
(#) = qualifier out of range (m) = manual integration (+) = signals summed

Data Path : Z:\voasrv\HPCHEM1\MSVOA_D\Data\VD012121\
 Data File : VD068134.D
 Acq On : 21 Jan 2021 15:52
 Operator : VA/SY
 Sample : M1198-02
 Misc : 4.60G/5.00ml/MSVOA_D/SOIL
 ALS Vial : 10 Sample Multiplier: 1

Instrument :
 MSVOA_D
 ClientSampleId :
 TT-037-IDWSO-20210120

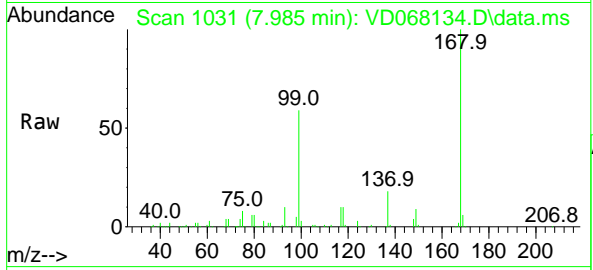
Quant Time: Jan 22 00:10:03 2021
 Quant Method : Z:\voasrv\HPCHEM1\MSVOA_D\Method\82D011921S.M
 Quant Title : SW846 8260
 QLast Update : Tue Jan 19 13:19:08 2021
 Response via : Initial Calibration



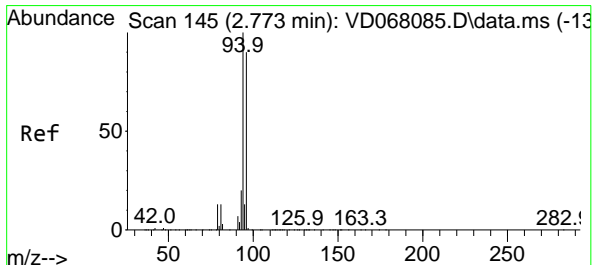
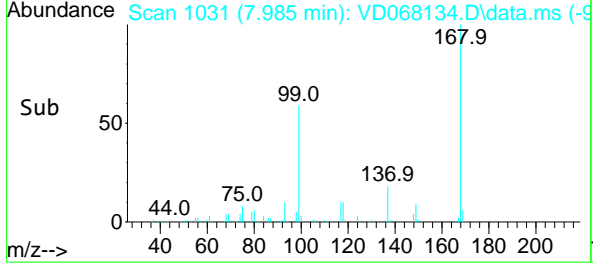
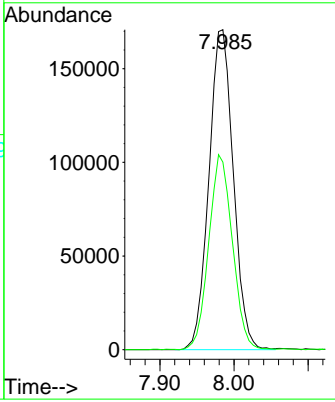


#1
 Pentafluorobenzene
 Concen: 50.00 ug/l
 RT: 7.985 min Scan# 1031
 Delta R.T. -0.000 min
 Lab File: VD068134.D
 Acq: 21 Jan 2021 15:52

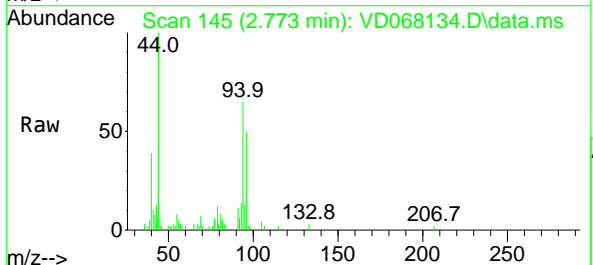
Instrument :
 MSVOA_D
ClientSampled :
 TT-037-IDWSO-20210120



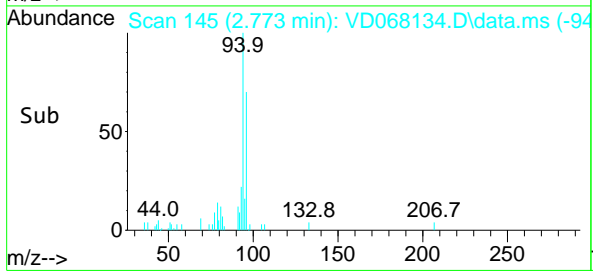
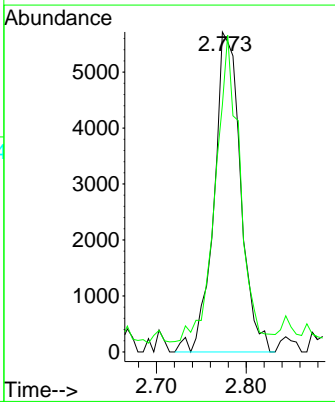
Tgt Ion:168 Resp: 390610
 Ion Ratio Lower Upper
 168 100
 99 58.5 43.5 65.3

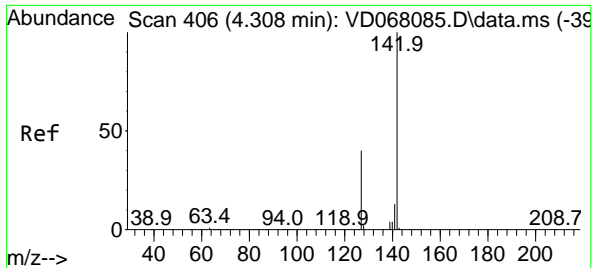


#5
 Bromomethane
 Concen: 3.08 ug/l
 RT: 2.773 min Scan# 145
 Delta R.T. 0.000 min
 Lab File: VD068134.D
 Acq: 21 Jan 2021 15:52



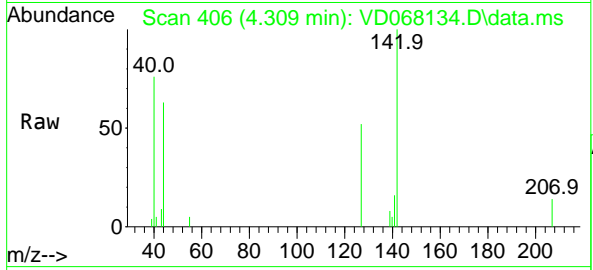
Tgt Ion: 94 Resp: 11724
 Ion Ratio Lower Upper
 94 100
 96 74.0 75.8 113.8#





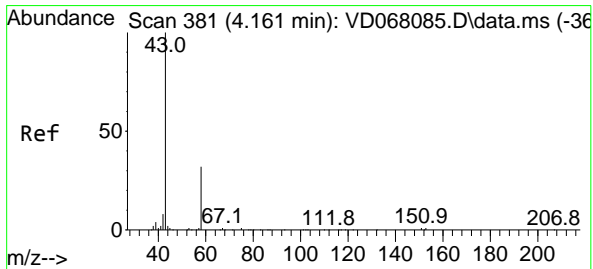
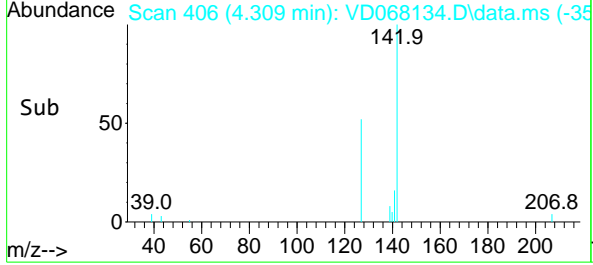
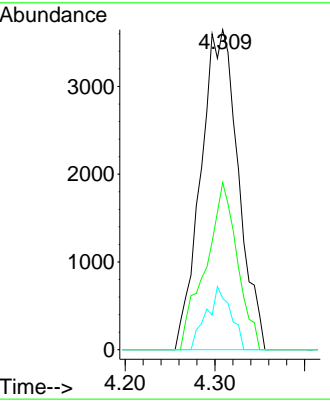
#10
 Methyl Iodide
 Concen: 5.23 ug/l
 RT: 4.309 min Scan# 406
 Delta R.T. 0.001 min
 Lab File: VD068134.D
 Acq: 21 Jan 2021 15:52

Instrument :
 MSVOA_D
ClientSampled :
 TT-037-IDWSO-20210120

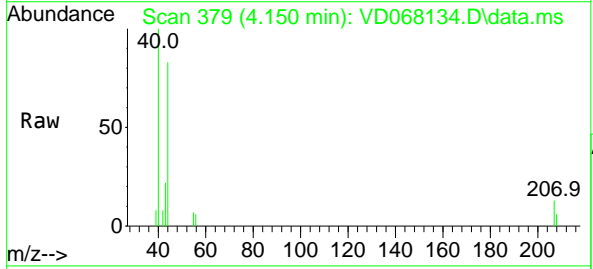


Tgt Ion:142 Resp: 10570

Ion	Ratio	Lower	Upper
142	100		
127	44.2	37.9	56.9
141	12.7	11.5	17.3

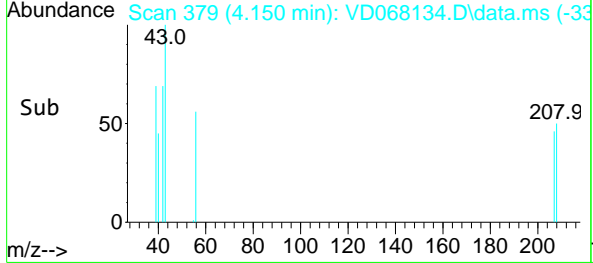
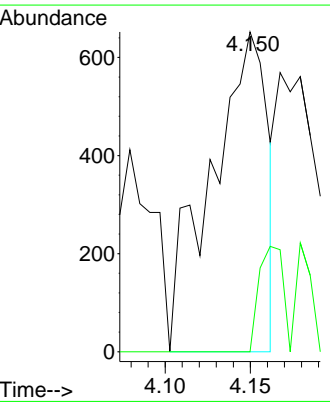


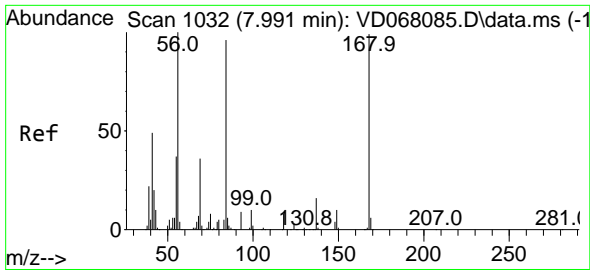
#16
 Acetone
 Concen: 2.25 ug/l
 RT: 4.150 min Scan# 379
 Delta R.T. -0.011 min
 Lab File: VD068134.D
 Acq: 21 Jan 2021 15:52



Tgt Ion: 43 Resp: 1502

Ion	Ratio	Lower	Upper
43	100		
58	0.0	24.2	36.4#



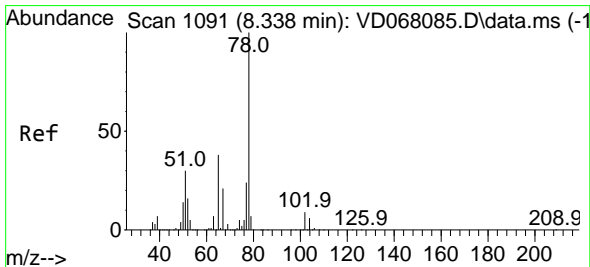
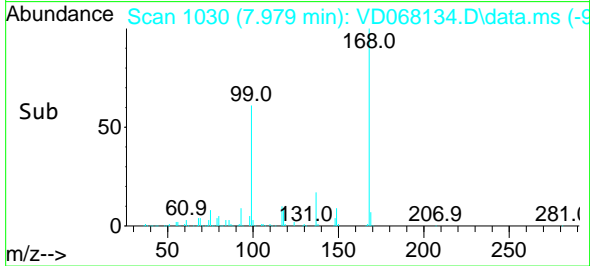
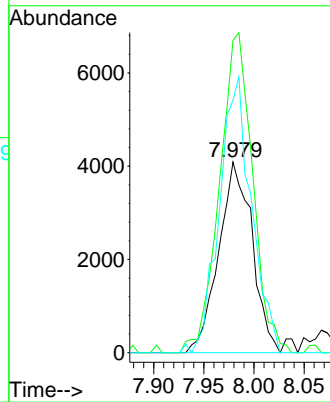
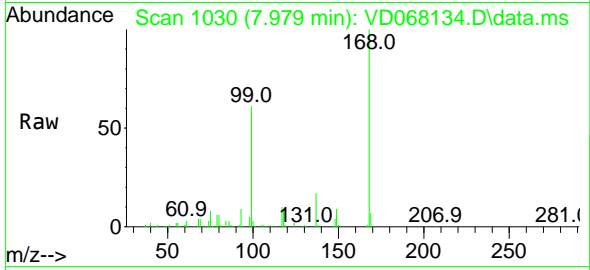


#31
 Cyclohexane
 Concen: 1.17 ug/l
 RT: 7.979 min Scan# 1030
 Delta R.T. -0.011 min
 Lab File: VD068134.D
 Acq: 21 Jan 2021 15:52

Instrument : MSVOA_D
 ClientSampleId : TT-037-IDWSO-20210120

Tgt Ion: 56 Resp: 9492

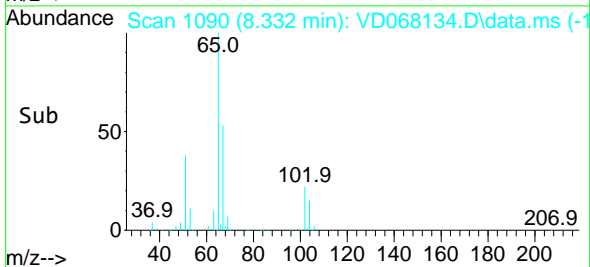
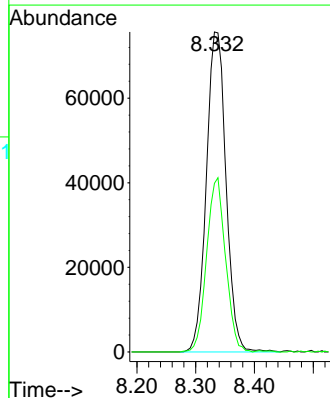
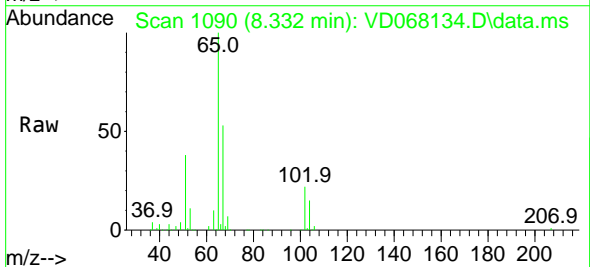
Ion	Ratio	Lower	Upper
56	100		
69	163.9	30.1	45.1#
84	132.5	82.1	123.1#

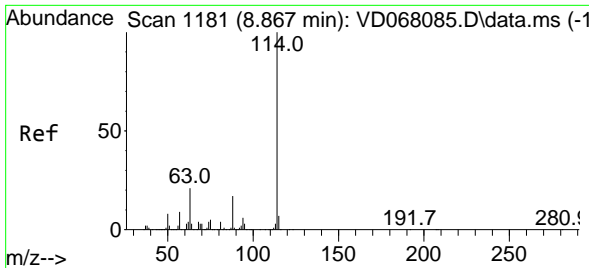


#33
 1,2-Dichloroethane-d4
 Concen: 47.01 ug/l
 RT: 8.332 min Scan# 1090
 Delta R.T. -0.006 min
 Lab File: VD068134.D
 Acq: 21 Jan 2021 15:52

Tgt Ion: 65 Resp: 175665

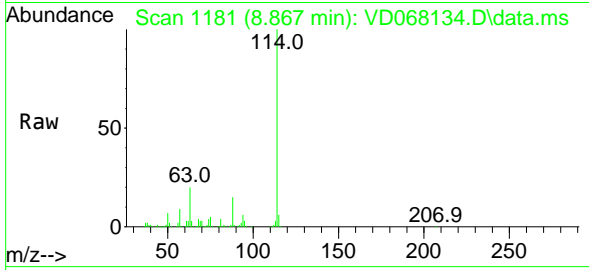
Ion	Ratio	Lower	Upper
65	100		
67	52.3	0.0	105.0





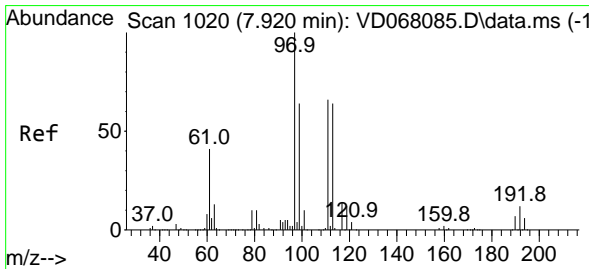
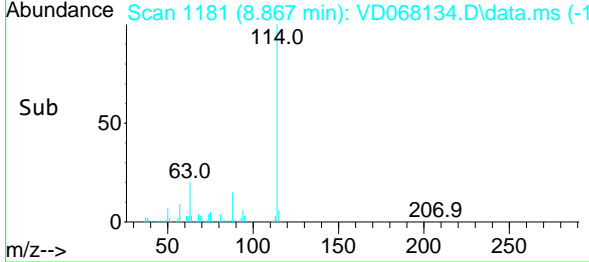
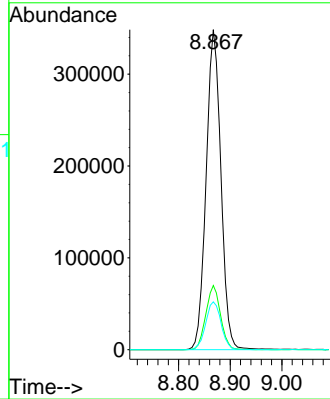
#34
 1,4-Difluorobenzene
 Concen: 50.00 ug/l
 RT: 8.867 min Scan# 1181
 Delta R.T. 0.000 min
 Lab File: VD068134.D
 Acq: 21 Jan 2021 15:52

Instrument :
 MSVOA_D
 ClientSampled :
 TT-037-IDWSO-20210120

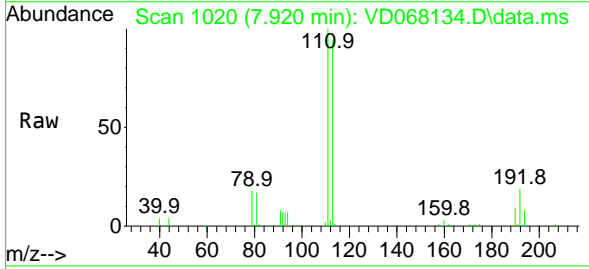


Tgt Ion:114 Resp: 691319

Ion	Ratio	Lower	Upper
114	100		
63	20.1	0.0	34.8
88	15.0	0.0	31.6

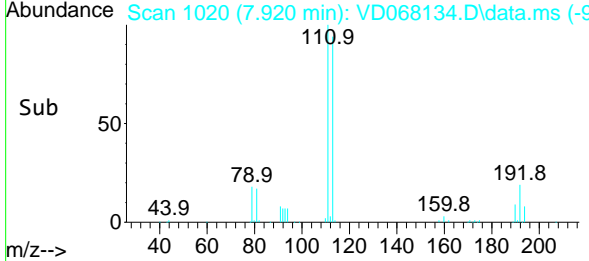
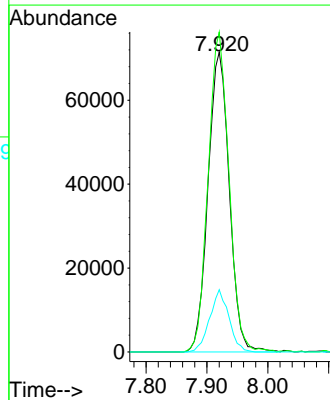


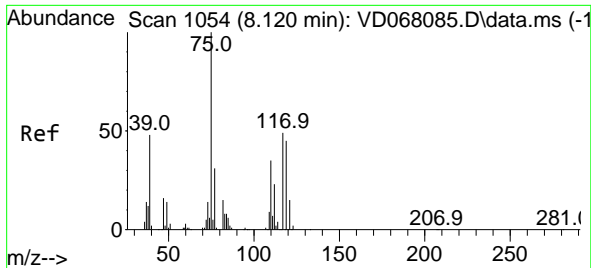
#35
 Dibromofluoromethane
 Concen: 45.33 ug/l
 RT: 7.920 min Scan# 1020
 Delta R.T. 0.000 min
 Lab File: VD068134.D
 Acq: 21 Jan 2021 15:52



Tgt Ion:113 Resp: 173254

Ion	Ratio	Lower	Upper
113	100		
111	104.4	81.4	122.0
192	18.8	16.1	24.1

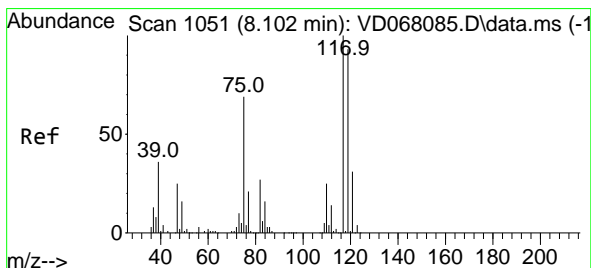
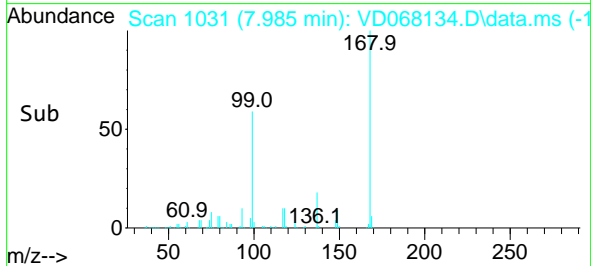
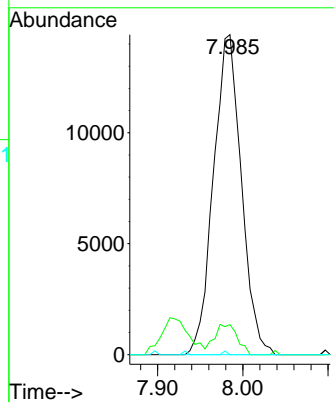
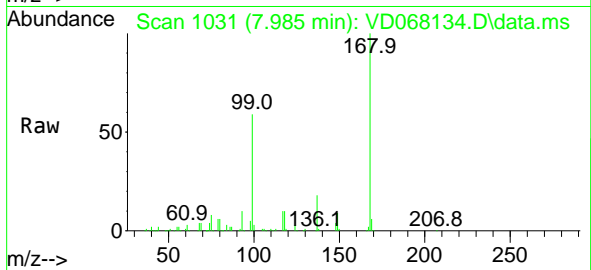




#36
 1,1-Dichloropropene
 Concen: 4.70 ug/l
 RT: 7.985 min Scan# 1031
 Delta R.T. -0.135 min
 Lab File: VD068134.D
 Acq: 21 Jan 2021 15:52

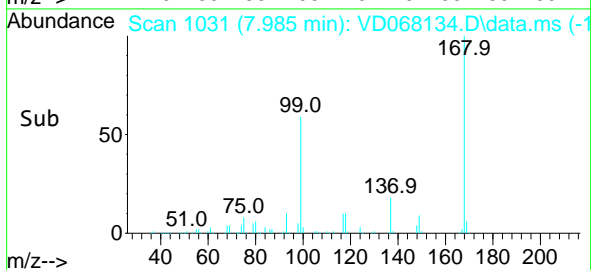
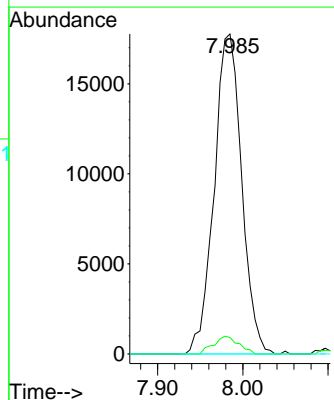
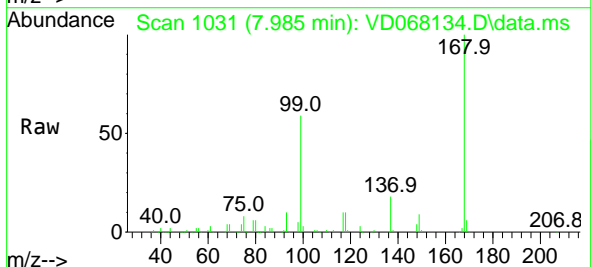
Instrument :
 MSVOA_D
 ClientSampled :
 TT-037-IDWSO-20210120

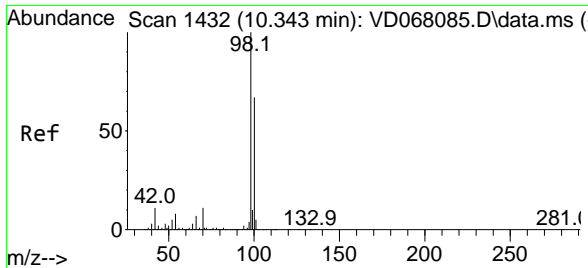
Tgt Ion	Resp	Lower	Upper
75	32800		
110	7.8	19.4	58.2#
77	0.2	25.3	37.9#



#38
 Carbon Tetrachloride
 Concen: 6.11 ug/l
 RT: 7.985 min Scan# 1031
 Delta R.T. -0.117 min
 Lab File: VD068134.D
 Acq: 21 Jan 2021 15:52

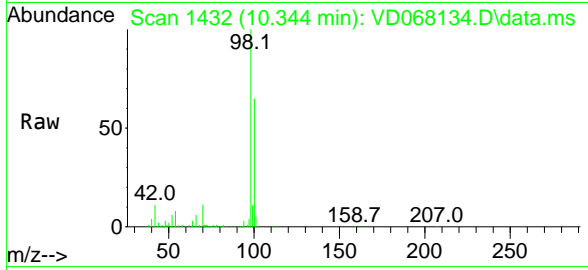
Tgt Ion	Resp	Lower	Upper
117	39877		
119	5.2	77.3	115.9#
121	0.0	24.7	37.1#



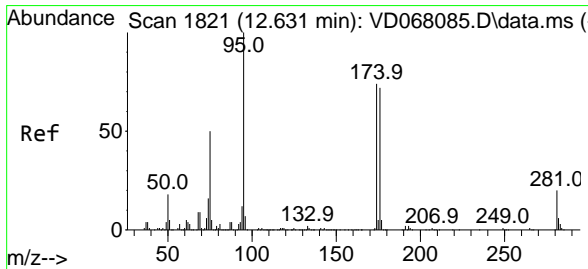
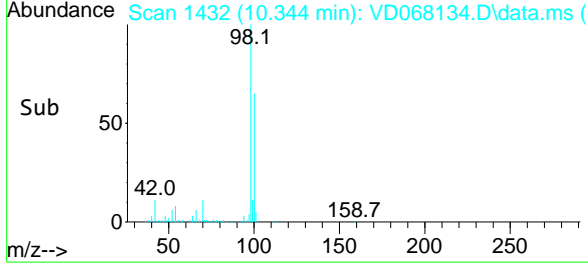
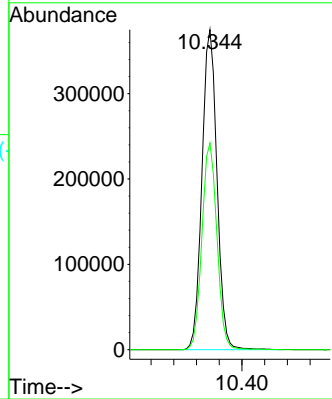


#50
 Toluene-d8
 Concen: 44.93 ug/l
 RT: 10.344 min Scan# 1432
 Delta R.T. 0.000 min
 Lab File: VD068134.D
 Acq: 21 Jan 2021 15:52

Instrument :
 MSVOA_D
ClientSampled :
 TT-037-IDWSO-20210120

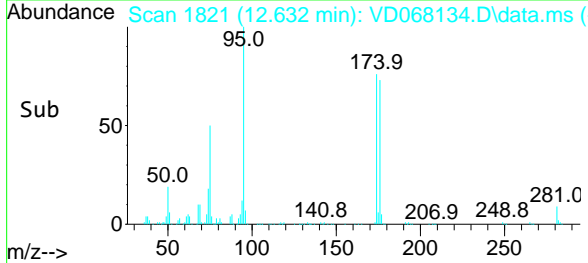
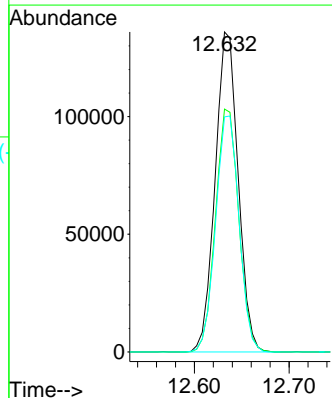
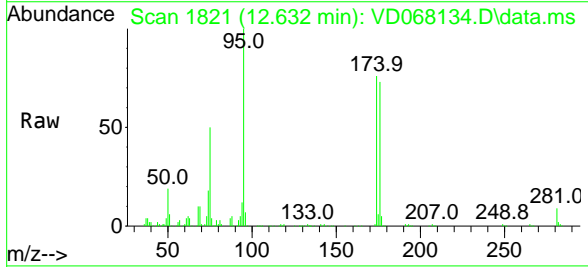


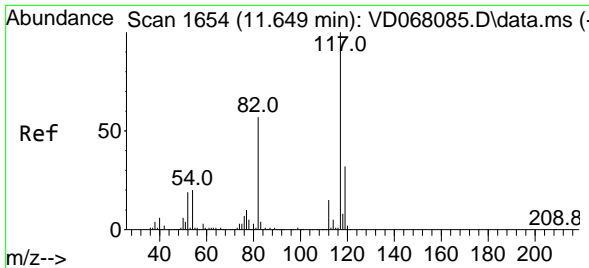
Tgt Ion: 98 Resp: 686867
 Ion Ratio Lower Upper
 98 100
 100 64.6 53.0 79.4



#62
 4-Bromofluorobenzene
 Concen: 41.75 ug/l
 RT: 12.632 min Scan# 1821
 Delta R.T. 0.000 min
 Lab File: VD068134.D
 Acq: 21 Jan 2021 15:52

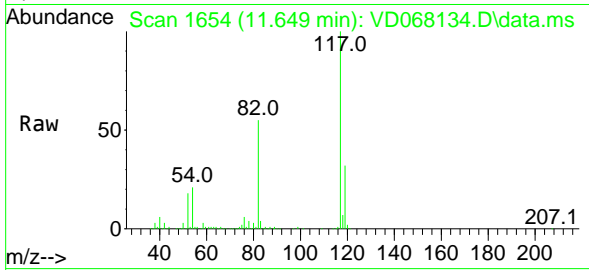
Tgt Ion: 95 Resp: 229848
 Ion Ratio Lower Upper
 95 100
 174 76.8 0.0 172.4
 176 74.9 0.0 168.4





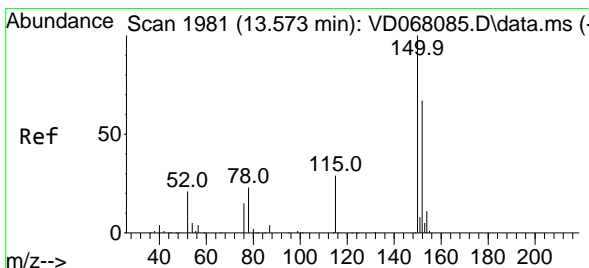
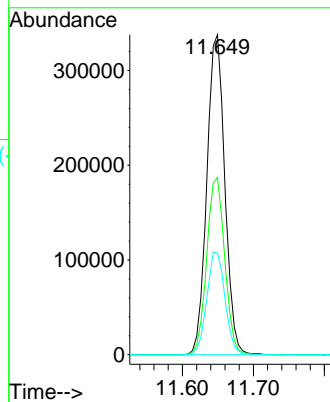
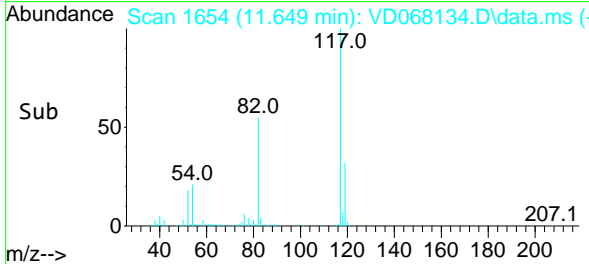
#63
 Chlorobenzene-d5
 Concen: 50.00 ug/l
 RT: 11.649 min Scan# 1654
 Delta R.T. 0.000 min
 Lab File: VD068134.D
 Acq: 21 Jan 2021 15:52

Instrument :
 MSVOA_D
 ClientSampleId :
 TT-037-IDWSO-20210120

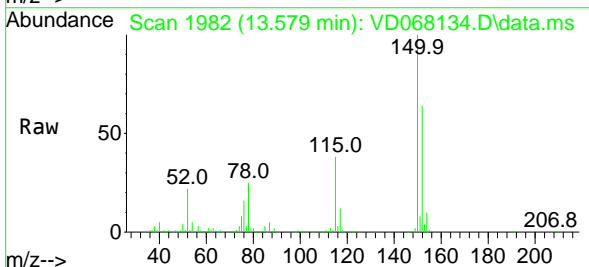


Tgt Ion:117 Resp: 593868

Ion	Ratio	Lower	Upper
117	100		
82	55.3	41.4	62.0
119	31.7	26.1	39.1

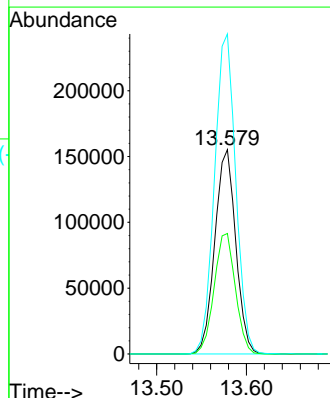
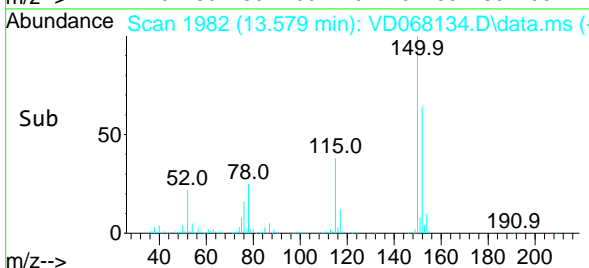


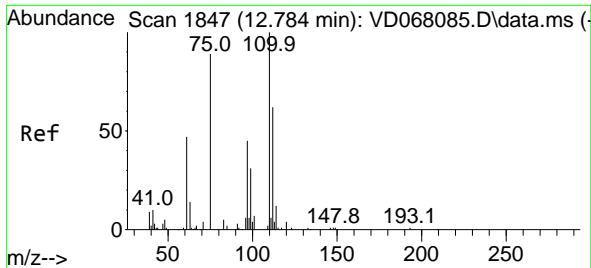
#72
 1,4-Dichlorobenzene-d4
 Concen: 50.00 ug/l
 RT: 13.579 min Scan# 1982
 Delta R.T. 0.006 min
 Lab File: VD068134.D
 Acq: 21 Jan 2021 15:52



Tgt Ion:152 Resp: 251899

Ion	Ratio	Lower	Upper
152	100		
115	59.7	28.9	86.8
150	158.5	0.0	344.4

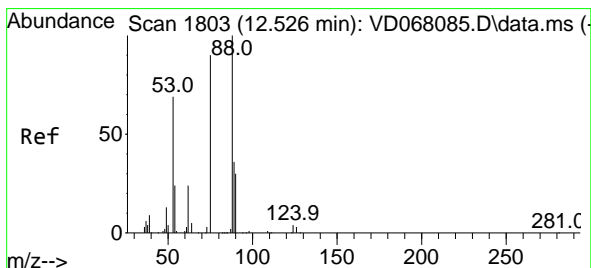
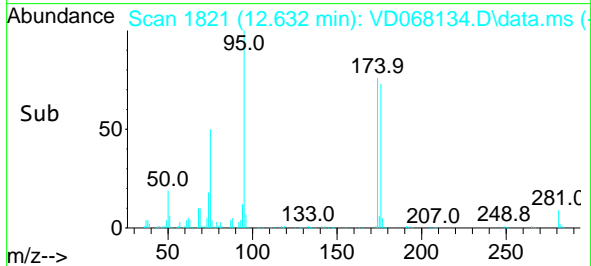
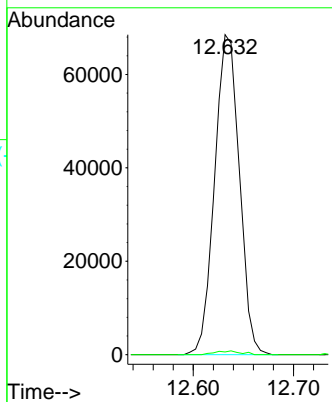
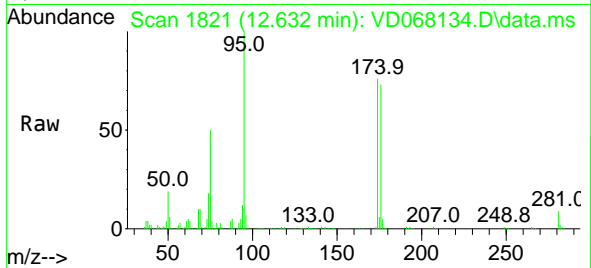




#76
 1,2,3-Trichloropropane
 Concen: 48.23 ug/l
 RT: 12.632 min Scan# 1821
 Delta R.T. -0.153 min
 Lab File: VD068134.D
 Acq: 21 Jan 2021 15:52

Instrument :
 MSVOA_D
 ClientSampleID :
 TT-037-IDWSO-20210120

Tgt Ion: 75 Resp: 117471
 Ion Ratio Lower Upper
 75 100
 77 1.2 0.0 0.0#



#81
 trans-1,4-Dichloro-2-butene
 Concen: 97.60 ug/l
 RT: 12.632 min Scan# 1821
 Delta R.T. 0.106 min
 Lab File: VD068134.D
 Acq: 21 Jan 2021 15:52

Tgt Ion: 75 Resp: 117471
 Ion Ratio Lower Upper
 75 100
 53 0.0 70.2 105.2#
 89 0.1 40.3 60.5#

