

Data Path : Z:\voasrv\HPCHEM1\MSVOA_D\Data\VD012121\
 Data File : VD068135.D
 Acq On : 21 Jan 2021 16:19
 Operator : VA/SY
 Sample : M1193-01
 Misc : 6.82G/5.00ml/MSVOA_D/SOIL
 ALS Vial : 10 Sample Multiplier: 1

Instrument :
 MSVOA_D
 ClientSampleId :
 OR-02-012121

Quant Time: Jan 22 00:10:20 2021
 Quant Method : Z:\voasrv\HPCHEM1\MSVOA_D\Method\82D011921S.M
 Quant Title : SW846 8260
 QLast Update : Tue Jan 19 13:19:08 2021
 Response via : Initial Calibration

Compound	R.T.	QIon	Response	Conc	Units	Dev(Min)

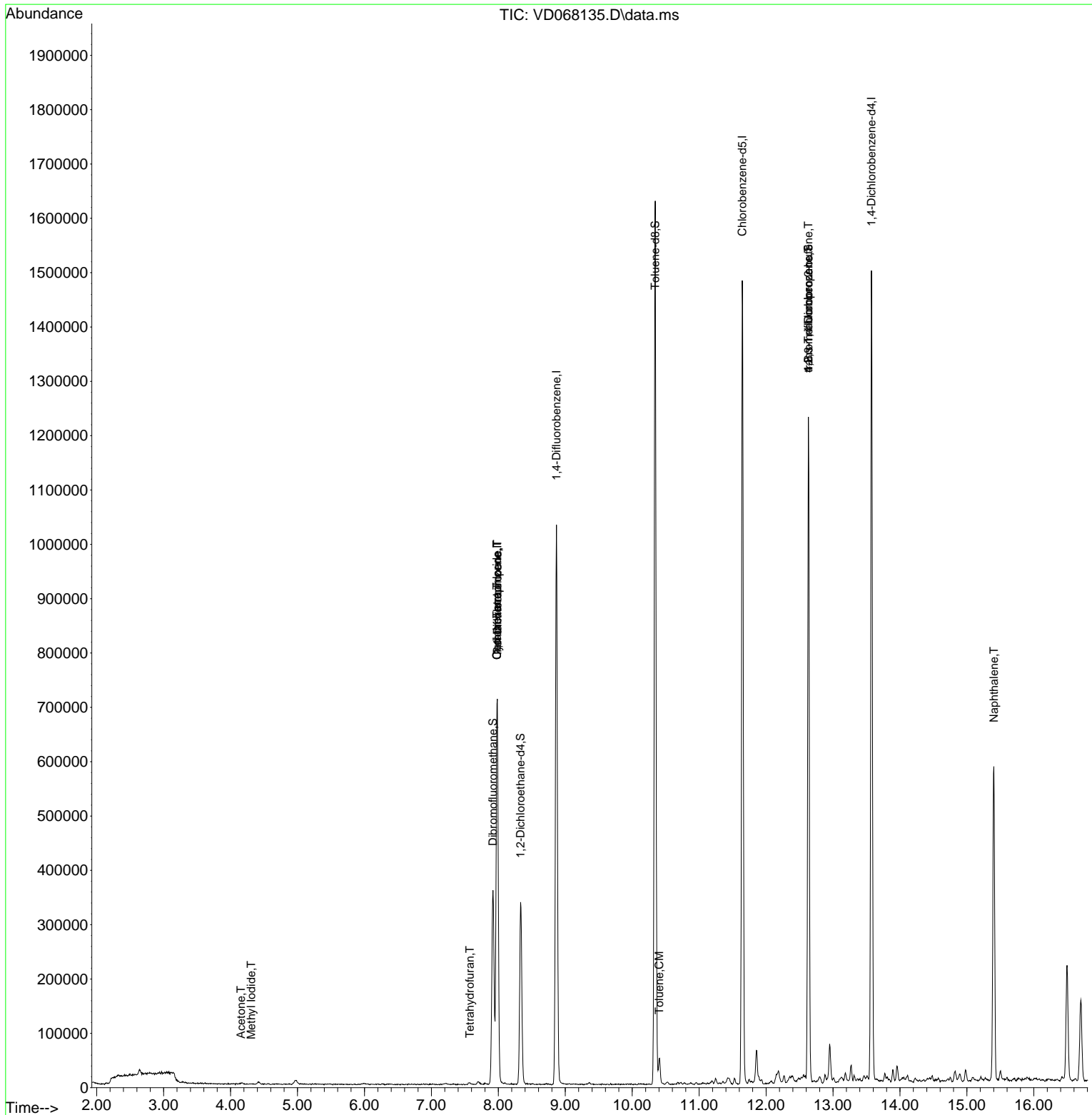
Internal Standards						
1) Pentafluorobenzene	7.985	168	540547	50.00	ug/l	0.00
34) 1,4-Difluorobenzene	8.867	114	913148	50.00	ug/l	0.00
63) Chlorobenzene-d5	11.644	117	884294	50.00	ug/l	0.00
72) 1,4-Dichlorobenzene-d4	13.573	152	400760	50.00	ug/l	0.00
System Monitoring Compounds						
33) 1,2-Dichloroethane-d4	8.332	65	267793	51.79	ug/l	0.00
Spiked Amount	50.000	Range	50 - 163	Recovery	=	103.58%
35) Dibromofluoromethane	7.920	113	267094	52.91	ug/l	0.00
Spiked Amount	50.000	Range	54 - 147	Recovery	=	105.82%
50) Toluene-d8	10.344	98	1137999	56.35	ug/l	0.00
Spiked Amount	50.000	Range	49 - 140	Recovery	=	112.70%
62) 4-Bromofluorobenzene	12.632	95	420004	57.76	ug/l	0.00
Spiked Amount	50.000	Range	25 - 144	Recovery	=	115.52%
Target Compounds						
						Qvalue
10) Methyl Iodide	4.309	142	433	3.22	ug/l #	38
11) Tert butyl alcohol	5.215	59	144	Below	Cal #	1
16) Acetone	4.156	43	2325	2.52	ug/l	93
20) Methylene Chloride	4.973	84	6772	Below	Cal #	88
29) Tetrahydrofuran	7.573	42	3067	3.40	ug/l #	41
31) Cyclohexane	7.979	56	13377	1.19	ug/l #	40
36) 1,1-Dichloropropene	7.985	75	43616	4.74	ug/l #	48
38) Carbon Tetrachloride	7.979	117	54260	6.30	ug/l #	15
52) Toluene	10.403	92	18593	1.11	ug/l	97
76) 1,2,3-Trichloropropane	12.632	75	214758	55.42	ug/l #	100
81) trans-1,4-Dichloro-2-b...	12.632	75	214758	112.15	ug/l #	13
95) Naphthalene	15.402	128	530123	35.03	ug/l	100

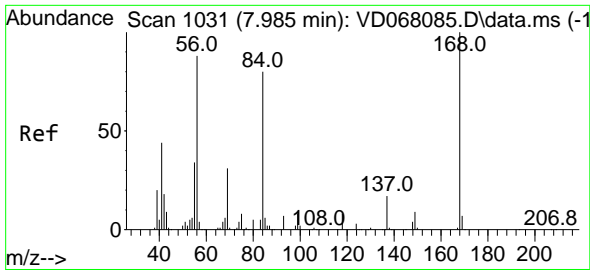
(#) = qualifier out of range (m) = manual integration (+) = signals summed

Data Path : Z:\voasrv\HPCHEM1\MSVOA_D\Data\VD012121\
 Data File : VD068135.D
 Acq On : 21 Jan 2021 16:19
 Operator : VA/SY
 Sample : M1193-01
 Misc : 6.82G/5.00ml/MSVOA_D/SOIL
 ALS Vial : 10 Sample Multiplier: 1

Instrument :
 MSVOA_D
 ClientSampleId :
 OR-02-012121

Quant Time: Jan 22 00:10:20 2021
 Quant Method : Z:\voasrv\HPCHEM1\MSVOA_D\Method\82D011921S.M
 Quant Title : SW846 8260
 QLast Update : Tue Jan 19 13:19:08 2021
 Response via : Initial Calibration

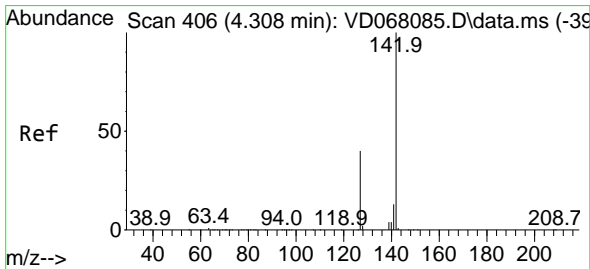
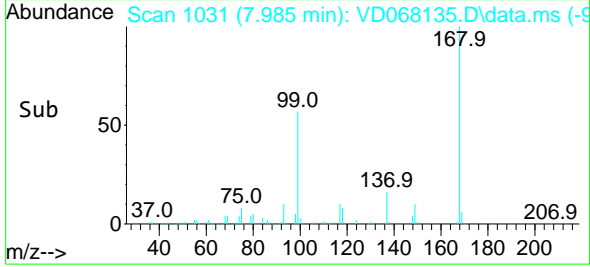
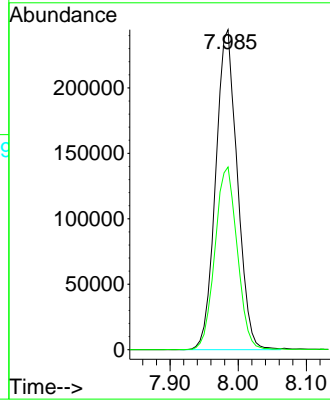
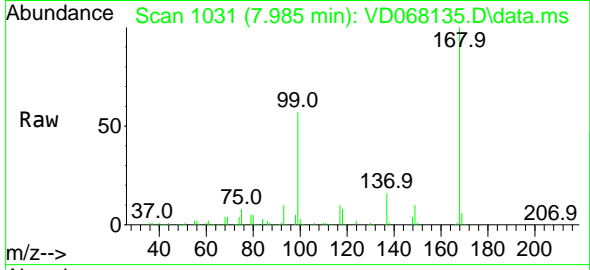




#1
 Pentafluorobenzene
 Concen: 50.00 ug/l
 RT: 7.985 min Scan# 1031
 Delta R.T. 0.000 min
 Lab File: VD068135.D
 Acq: 21 Jan 2021 16:19

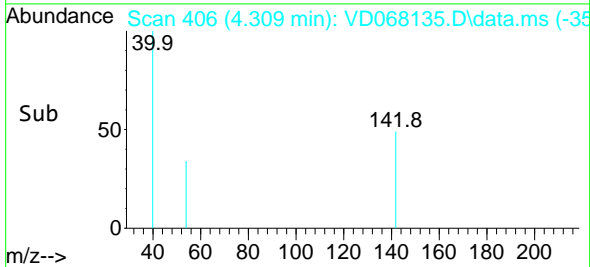
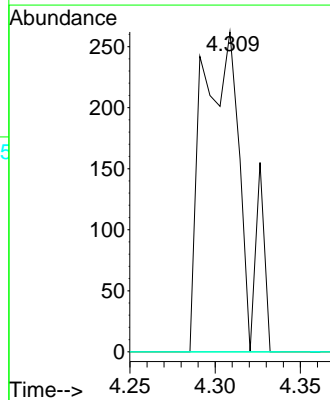
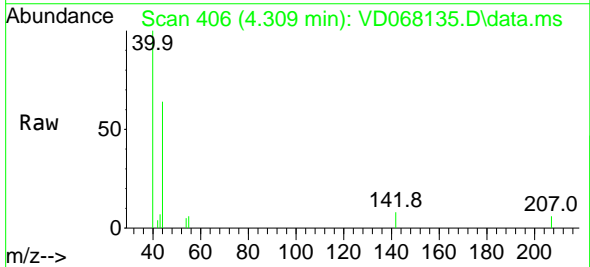
Instrument :
 MSVOA_D
 ClientSampled :
 OR-02-012121

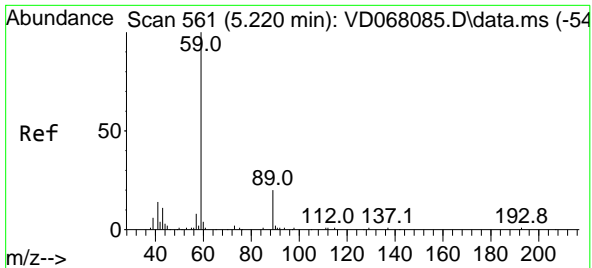
Tgt Ion:168 Resp: 540547
 Ion Ratio Lower Upper
 168 100
 99 57.1 43.5 65.3



#10
 Methyl Iodide
 Concen: 3.22 ug/l
 RT: 4.309 min Scan# 406
 Delta R.T. 0.001 min
 Lab File: VD068135.D
 Acq: 21 Jan 2021 16:19

Tgt Ion:142 Resp: 433
 Ion Ratio Lower Upper
 142 100
 127 0.0 37.9 56.9#
 141 0.0 11.5 17.3#

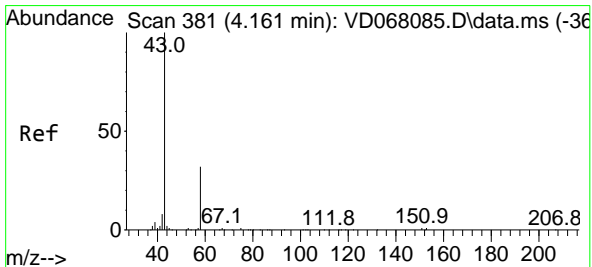
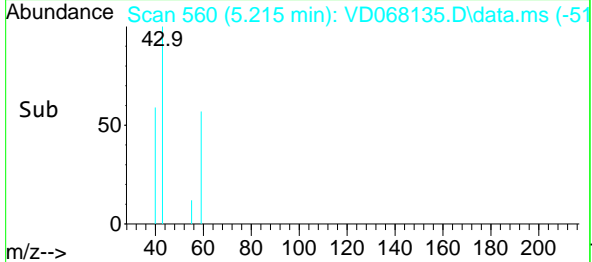
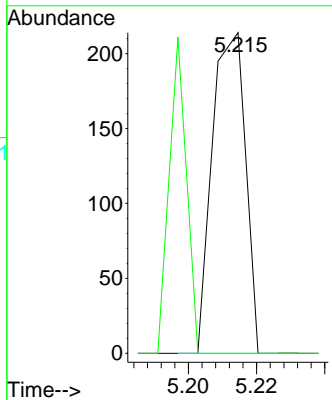
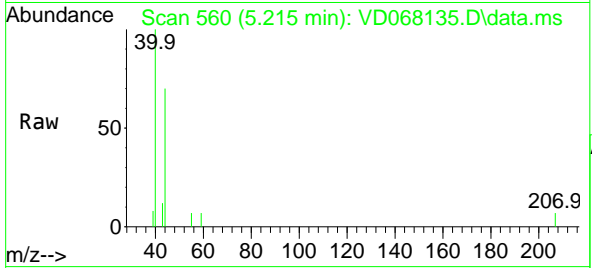




#11
 Tert butyl alcohol
 Concen: Below Cal
 RT: 5.215 min Scan# 560
 Delta R.T. -0.005 min
 Lab File: VD068135.D
 Acq: 21 Jan 2021 16:19

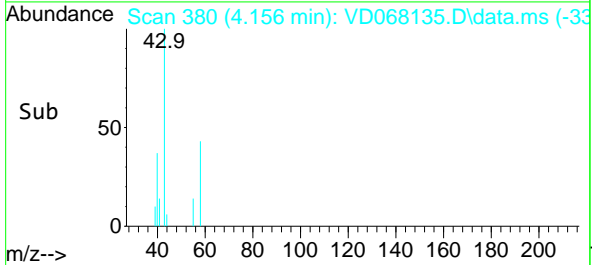
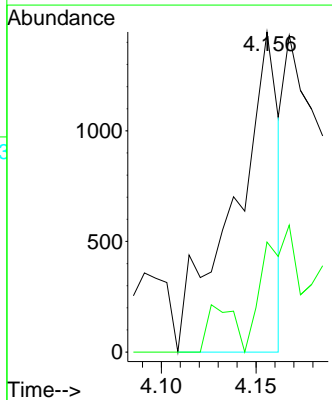
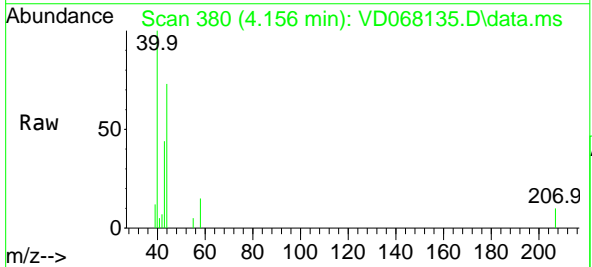
Instrument :
 MSVOA_D
ClientSampled :
 OR-02-012121

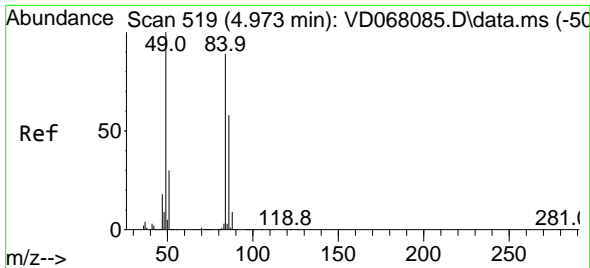
Tgt Ion: 59 Resp: 144
 Ion Ratio Lower Upper
 59 100
 57 51.4 7.4 11.2#



#16
 Acetone
 Concen: 2.52 ug/l
 RT: 4.156 min Scan# 380
 Delta R.T. -0.006 min
 Lab File: VD068135.D
 Acq: 21 Jan 2021 16:19

Tgt Ion: 43 Resp: 2325
 Ion Ratio Lower Upper
 43 100
 58 34.3 24.2 36.4



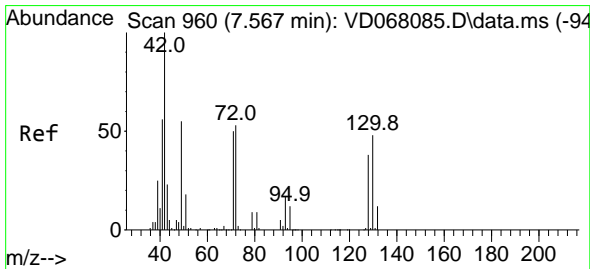
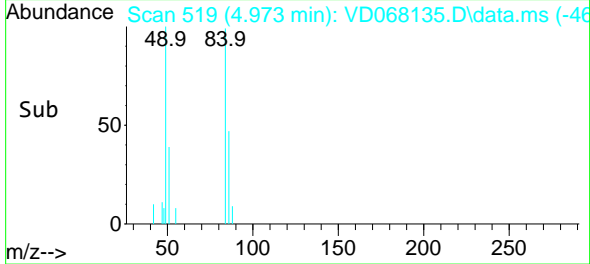
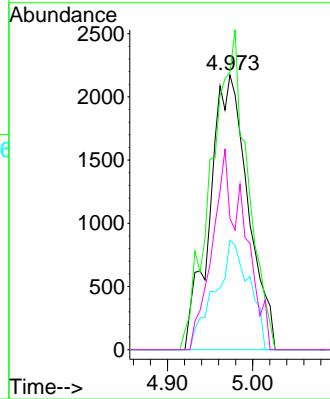
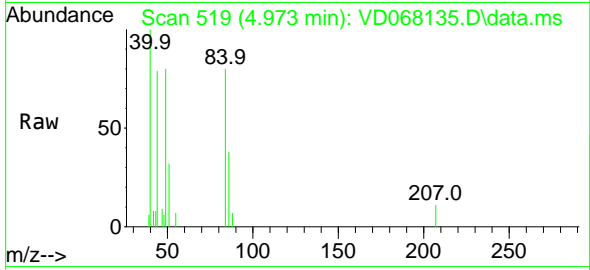


#20
 Methylene Chloride
 Concen: Below Cal
 RT: 4.973 min Scan# 519
 Delta R.T. 0.000 min
 Lab File: VD068135.D
 Acq: 21 Jan 2021 16:19

Instrument :
 MSVOA_D
 ClientSampled :
 OR-02-012121

Tgt Ion: 84 Resp: 6772

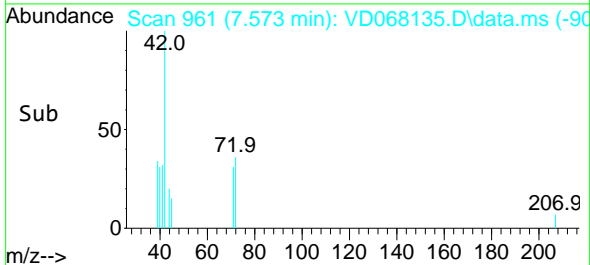
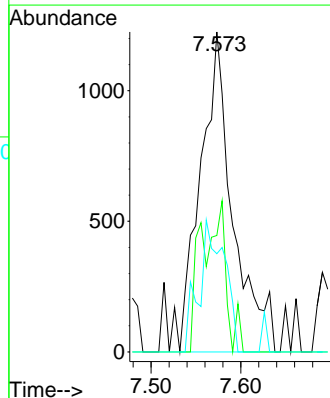
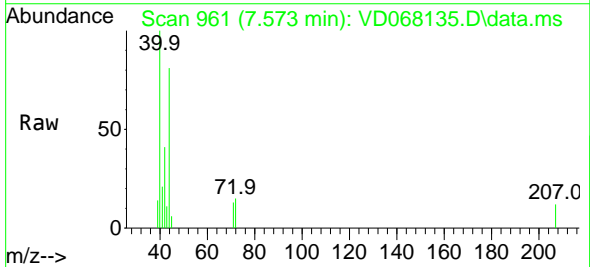
Ion	Ratio	Lower	Upper
84	100		
49	101.1	77.4	116.2
51	39.9	26.1	39.1#
86	47.8	51.8	77.8#

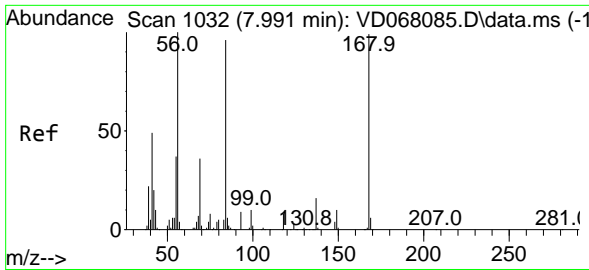


#29
 Tetrahydrofuran
 Concen: 3.40 ug/l
 RT: 7.573 min Scan# 961
 Delta R.T. 0.006 min
 Lab File: VD068135.D
 Acq: 21 Jan 2021 16:19

Tgt Ion: 42 Resp: 3067

Ion	Ratio	Lower	Upper
42	100		
72	21.0	43.4	65.0#
71	0.0	40.8	61.2#



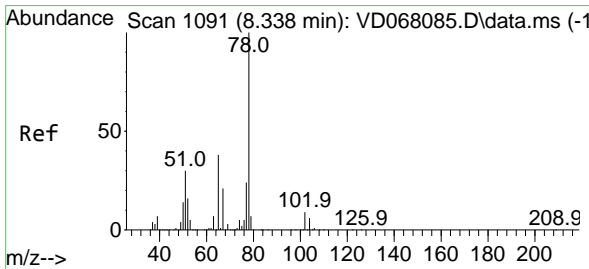
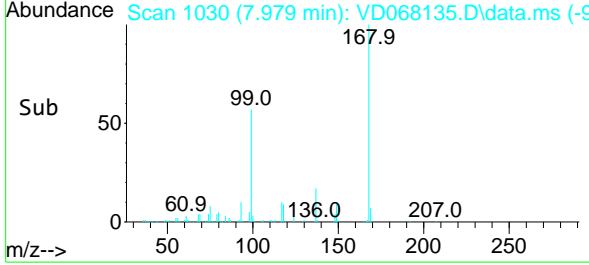
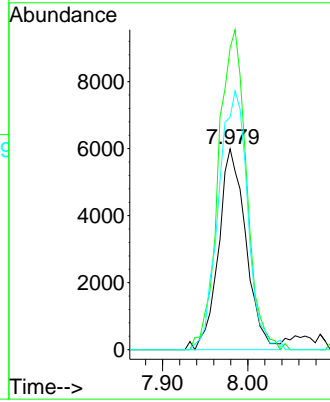
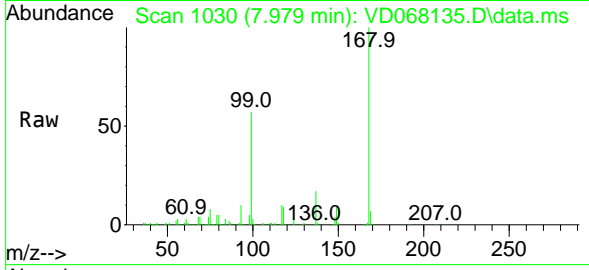


#31
 Cyclohexane
 Concen: 1.19 ug/l
 RT: 7.979 min Scan# 1030
 Delta R.T. -0.011 min
 Lab File: VD068135.D
 Acq: 21 Jan 2021 16:19

Instrument :
 MSVOA_D
 ClientSampled :
 OR-02-012121

Tgt Ion: 56 Resp: 13377

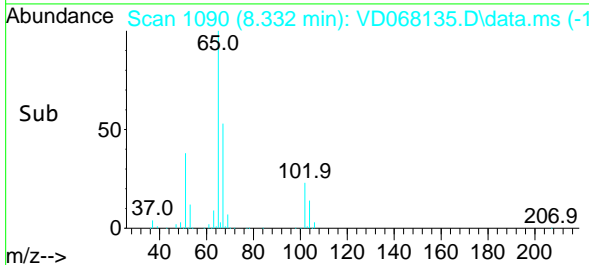
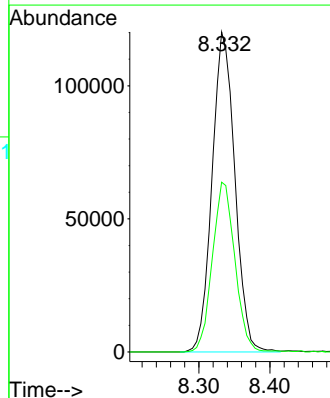
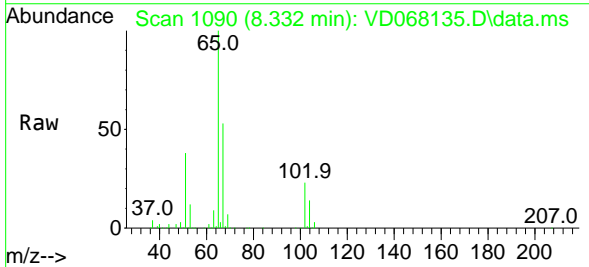
Ion	Ratio	Lower	Upper
56	100		
69	150.3	30.1	45.1#
84	115.8	82.1	123.1

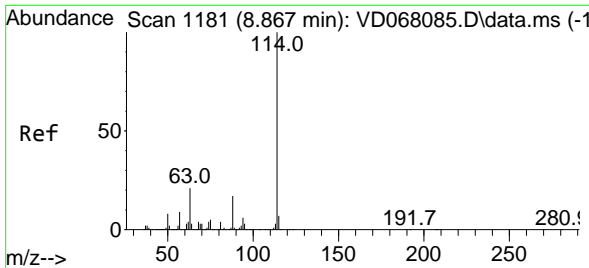


#33
 1,2-Dichloroethane-d4
 Concen: 51.79 ug/l
 RT: 8.332 min Scan# 1090
 Delta R.T. -0.006 min
 Lab File: VD068135.D
 Acq: 21 Jan 2021 16:19

Tgt Ion: 65 Resp: 267793

Ion	Ratio	Lower	Upper
65	100		
67	52.6	0.0	105.0

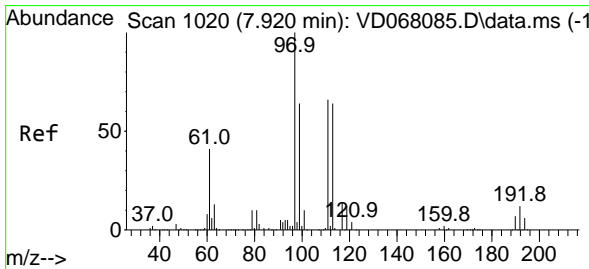
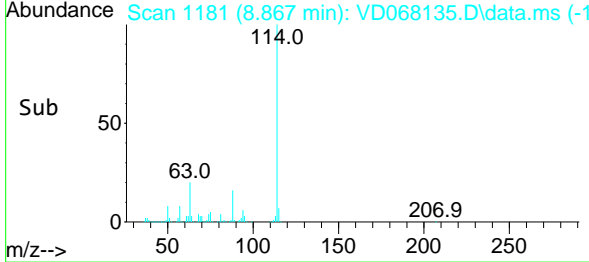
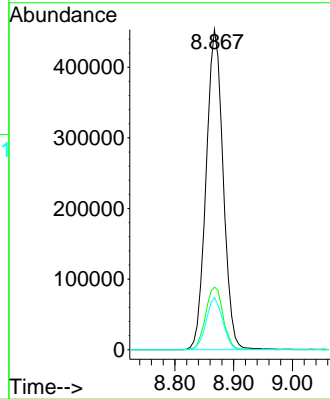
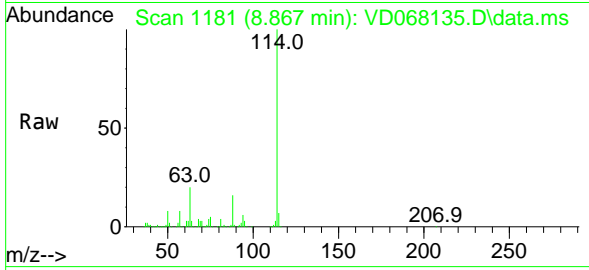




#34
 1,4-Difluorobenzene
 Concen: 50.00 ug/l
 RT: 8.867 min Scan# 1181
 Delta R.T. 0.000 min
 Lab File: VD068135.D
 Acq: 21 Jan 2021 16:19

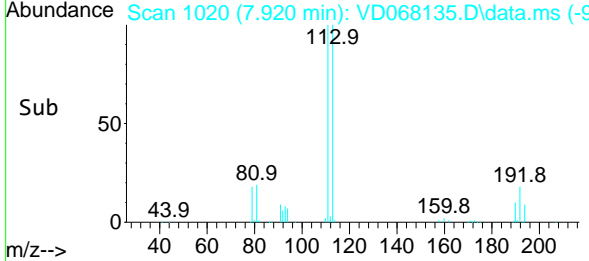
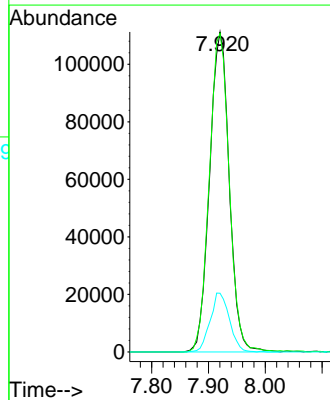
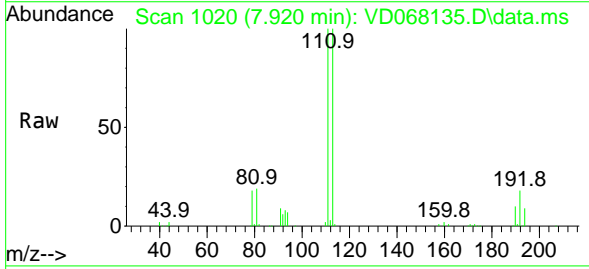
Instrument :
 MSVOA_D
 ClientSampled :
 OR-02-012121

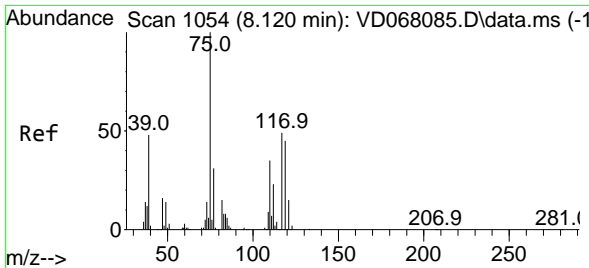
Tgt Ion	Resp	Lower	Upper
114	100		
63	19.5	0.0	34.8
88	16.4	0.0	31.6



#35
 Dibromofluoromethane
 Concen: 52.91 ug/l
 RT: 7.920 min Scan# 1020
 Delta R.T. 0.000 min
 Lab File: VD068135.D
 Acq: 21 Jan 2021 16:19

Tgt Ion	Resp	Lower	Upper
113	100		
111	100.8	81.4	122.0
192	18.0	16.1	24.1

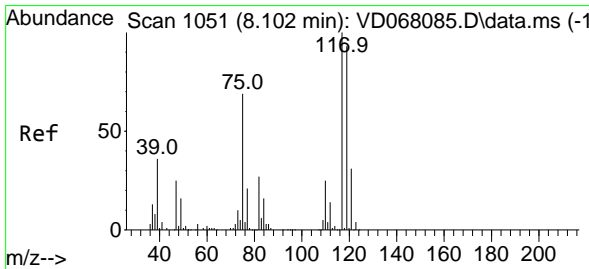
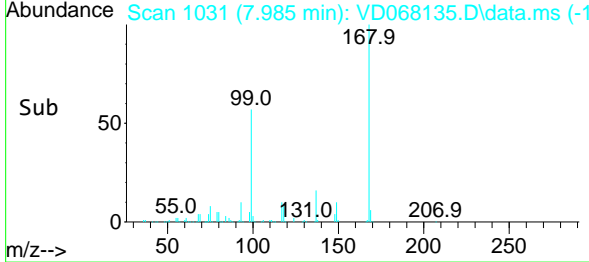
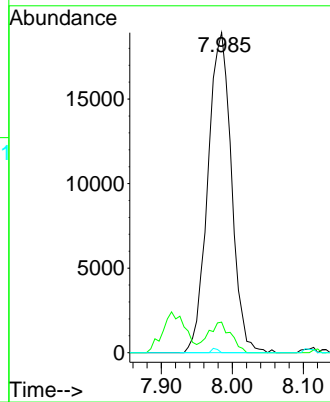
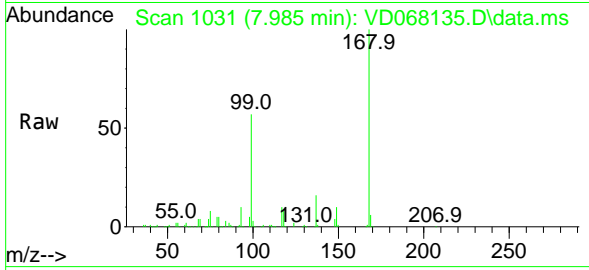




#36
 1,1-Dichloropropene
 Concen: 4.74 ug/l
 RT: 7.985 min Scan# 1031
 Delta R.T. -0.135 min
 Lab File: VD068135.D
 Acq: 21 Jan 2021 16:19

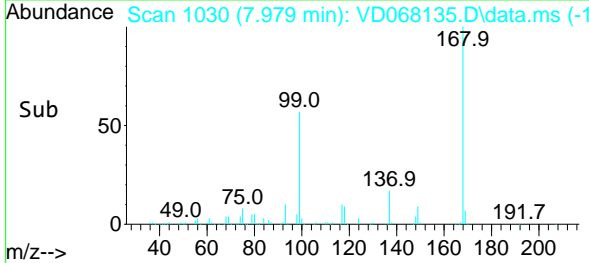
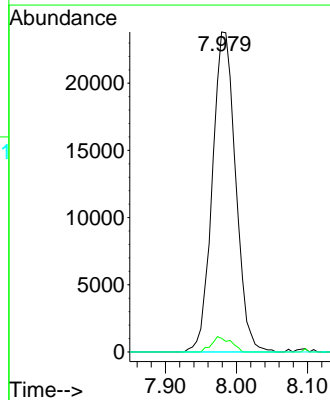
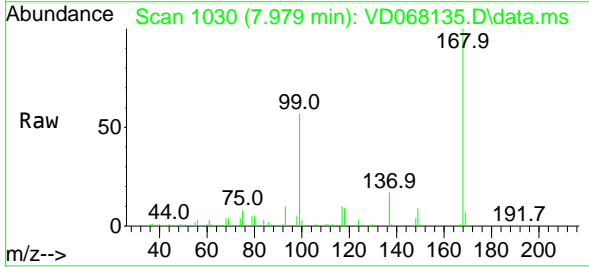
Instrument :
 MSVOA_D
 ClientSampled :
 OR-02-012121

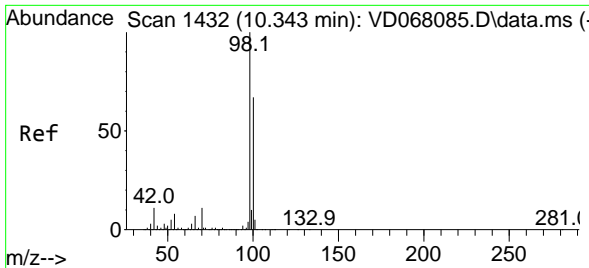
Tgt Ion	Resp	Lower	Upper
75	43616		
75	100		
110	9.3	19.4	58.2#
77	0.4	25.3	37.9#



#38
 Carbon Tetrachloride
 Concen: 6.30 ug/l
 RT: 7.979 min Scan# 1030
 Delta R.T. -0.123 min
 Lab File: VD068135.D
 Acq: 21 Jan 2021 16:19

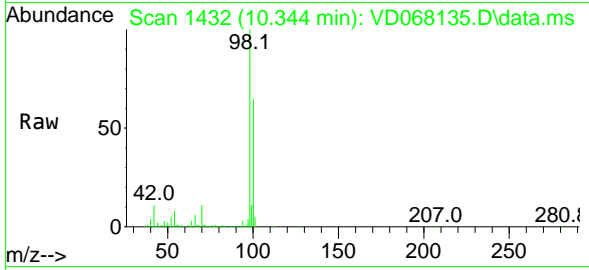
Tgt Ion	Resp	Lower	Upper
117	54260		
117	100		
119	4.3	77.3	115.9#
121	0.0	24.7	37.1#



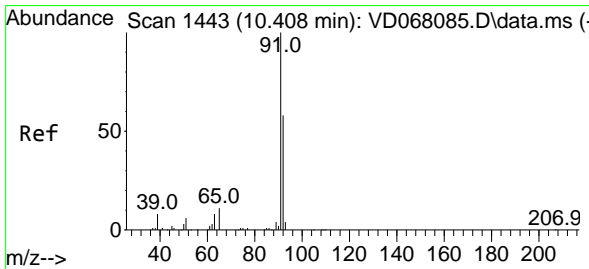
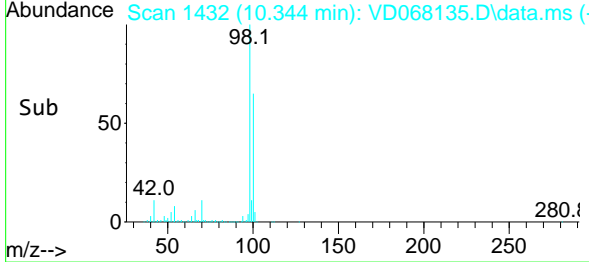
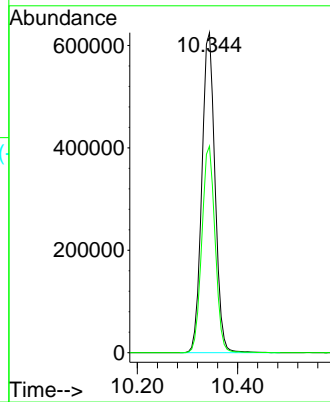


#50
 Toluene-d8
 Concen: 56.35 ug/l
 RT: 10.344 min Scan# 1432
 Delta R.T. 0.000 min
 Lab File: VD068135.D
 Acq: 21 Jan 2021 16:19

Instrument :
 MSVOA_D
 ClientSampled :
 OR-02-012121

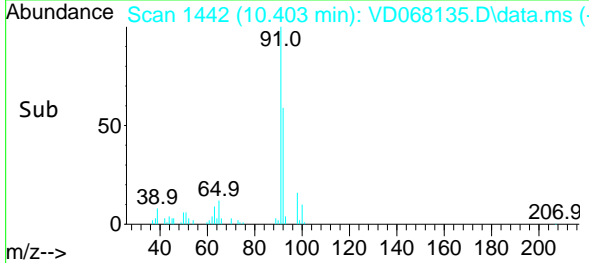
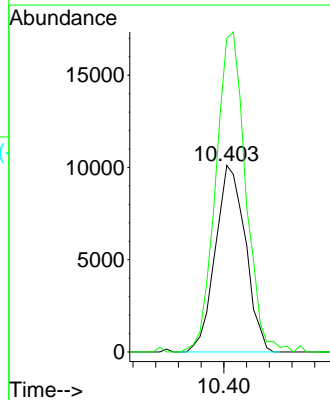
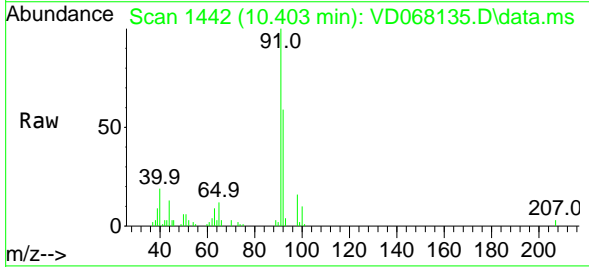


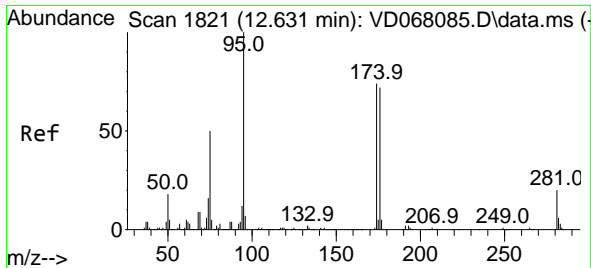
Tgt Ion: 98 Resp: 1137999
 Ion Ratio Lower Upper
 98 100
 100 65.3 53.0 79.4



#52
 Toluene
 Concen: 1.11 ug/l
 RT: 10.403 min Scan# 1442
 Delta R.T. -0.006 min
 Lab File: VD068135.D
 Acq: 21 Jan 2021 16:19

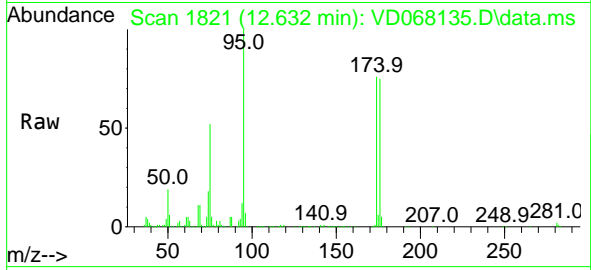
Tgt Ion: 92 Resp: 18593
 Ion Ratio Lower Upper
 92 100
 91 171.1 134.1 201.1





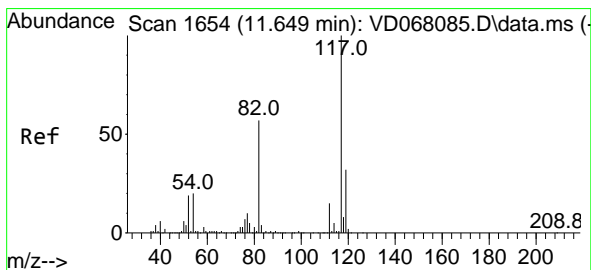
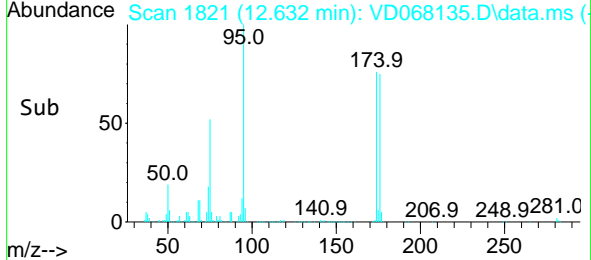
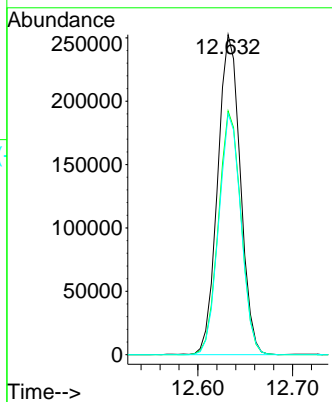
#62
 4-Bromofluorobenzene
 Concen: 57.76 ug/l
 RT: 12.632 min Scan# 1821
 Delta R.T. 0.000 min
 Lab File: VD068135.D
 Acq: 21 Jan 2021 16:19

Instrument :
 MSVOA_D
ClientSampled :
 OR-02-012121

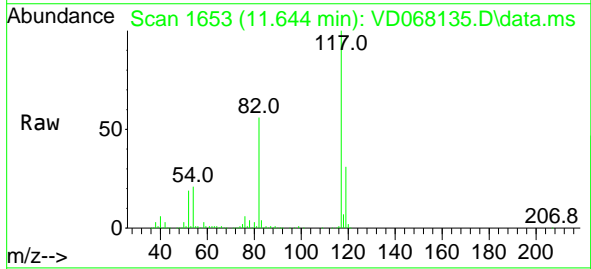


Tgt Ion: 95 Resp: 420004

Ion	Ratio	Lower	Upper
95	100		
174	75.9	0.0	172.4
176	74.0	0.0	168.4

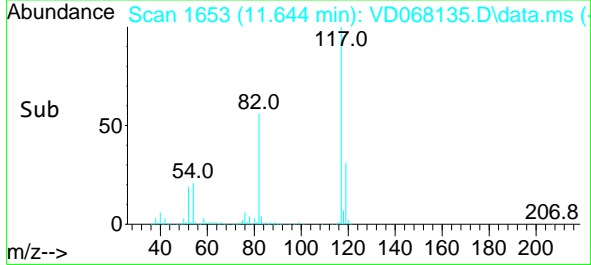
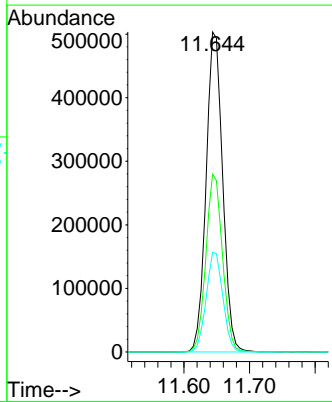


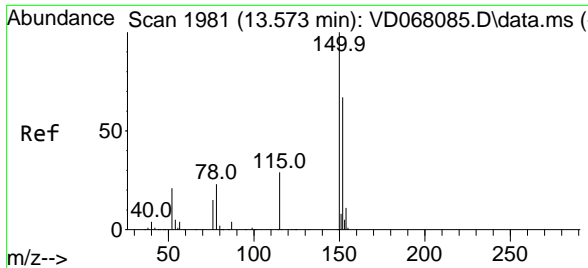
#63
 Chlorobenzene-d5
 Concen: 50.00 ug/l
 RT: 11.644 min Scan# 1653
 Delta R.T. -0.005 min
 Lab File: VD068135.D
 Acq: 21 Jan 2021 16:19



Tgt Ion: 117 Resp: 884294

Ion	Ratio	Lower	Upper
117	100		
82	55.6	41.4	62.0
119	31.1	26.1	39.1

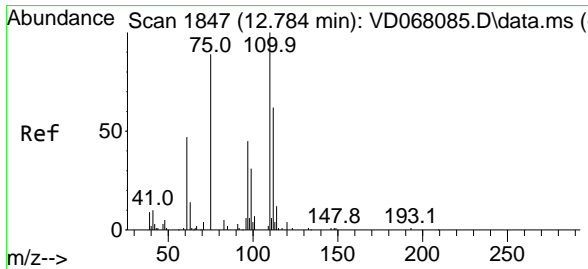
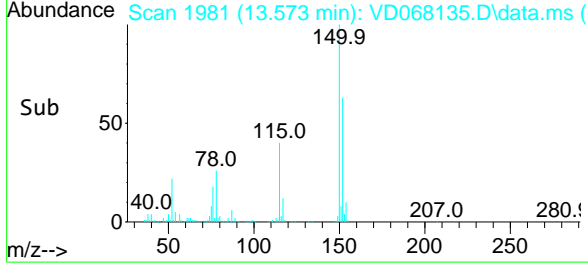
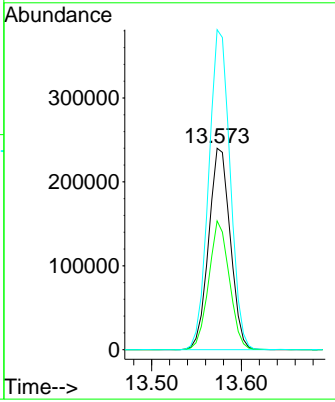
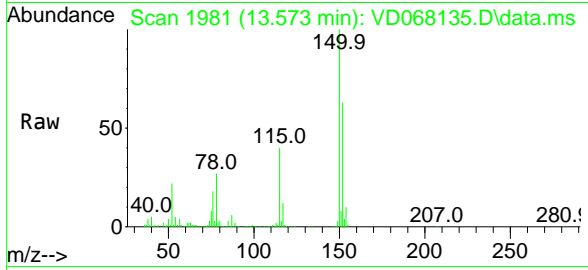




#72
 1,4-Dichlorobenzene-d4
 Concen: 50.00 ug/l
 RT: 13.573 min Scan# 1981
 Delta R.T. 0.000 min
 Lab File: VD068135.D
 Acq: 21 Jan 2021 16:19

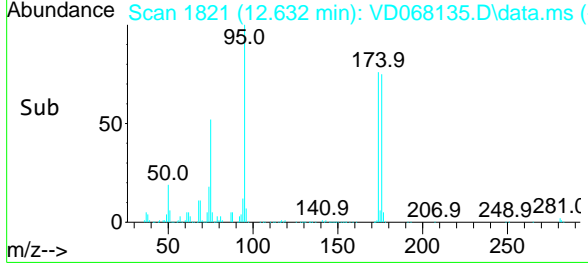
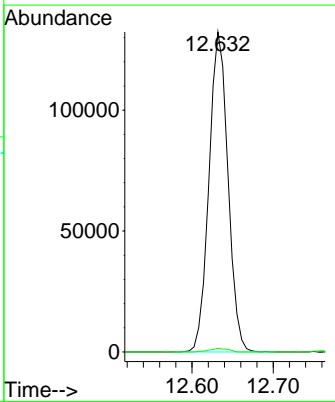
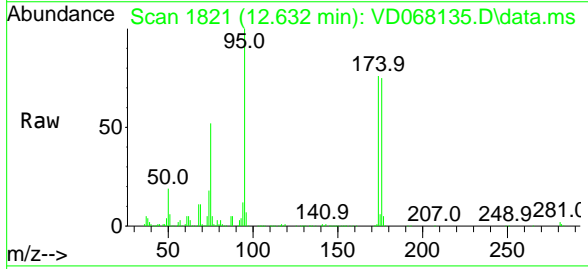
Instrument :
 MSVOA_D
ClientSampled :
 OR-02-012121

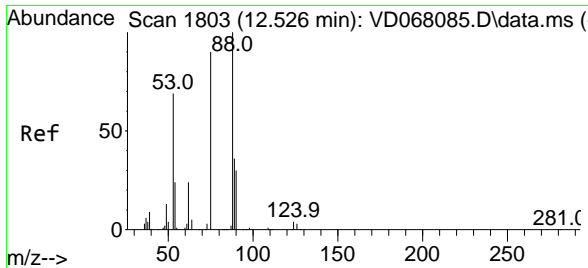
Tgt Ion	Resp	Lower	Upper
152	400760		
100	100		
115	61.1	28.9	86.8
150	157.9	0.0	344.4



#76
 1,2,3-Trichloropropane
 Concen: 55.42 ug/l
 RT: 12.632 min Scan# 1821
 Delta R.T. -0.153 min
 Lab File: VD068135.D
 Acq: 21 Jan 2021 16:19

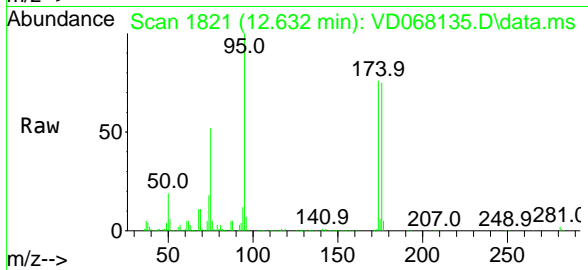
Tgt Ion	Resp	Lower	Upper
75	214758		
100	100		
77	1.1	0.0	0.0#



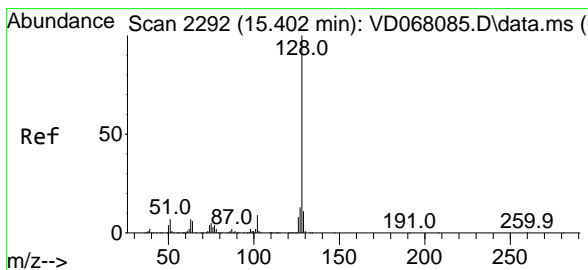
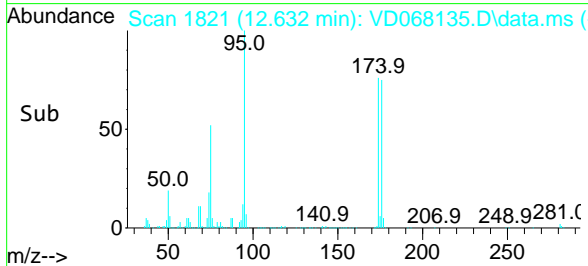
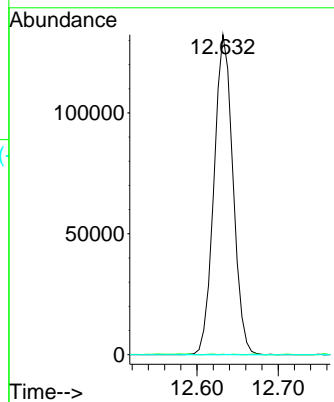


#81
 trans-1,4-Dichloro-2-butene
 Concen: 112.15 ug/l
 RT: 12.632 min Scan# 1821
 Delta R.T. 0.106 min
 Lab File: VD068135.D
 Acq: 21 Jan 2021 16:19

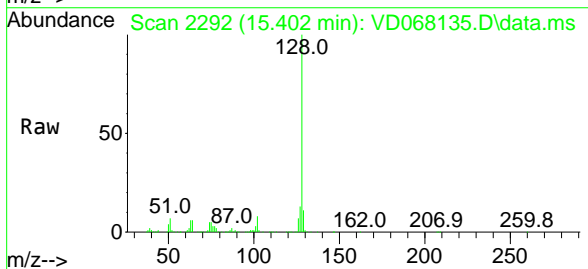
Instrument :
 MSVOA_D
ClientSampled :
 OR-02-012121



Tgt Ion: 75 Resp: 214758
 Ion Ratio Lower Upper
 75 100
 53 0.1 70.2 105.2#
 89 0.0 40.3 60.5#



#95
 Naphthalene
 Concen: 35.03 ug/l
 RT: 15.402 min Scan# 2292
 Delta R.T. 0.000 min
 Lab File: VD068135.D
 Acq: 21 Jan 2021 16:19



Tgt Ion:128 Resp: 530123
 Ion Ratio Lower Upper
 128 100
 127 12.8 10.2 15.2
 129 11.2 8.8 13.2

