

Data Path : Z:\voasrv\HPCHEM1\MSVOA_D\Data\VD021023\
 Data File : VD075309.D
 Acq On : 10 Feb 2023 14:38
 Operator : KP/SY
 Sample : 01508-07
 Misc : 3.45G/5.00ml/MSVOA_D/SOIL
 ALS Vial : 7 Sample Multiplier: 1

Instrument :
 MSVOA_D
 ClientSampleId :
 PA-1

Integration Parameters: RTEINT.P

Integrator: RTE

Smoothing : ON

Filtering: 5

Sampling : 1

Min Area: 3 % of largest Peak

Start Thrs: 0.2

Max Peaks: 100

Stop Thrs : 0

Peak Location: TOP

If leading or trailing edge < 100 prefer < Baseline drop else tangent >

Peak separation: 5

Method : Z:\voasrv\HPCHEM1\MSVOA_D\Method\82D020723S.M

Title : SW846 8260

Signal : TIC: VD075309.D\data.ms

peak #	R.T. min	first scan	max scan	last scan	PK TY	peak height	corr. area	corr. % max.	% of total
1	1.728	18	24	35	rBV	234903	421415	100.00%	16.140%
2	4.793	538	545	546	rBV	5185	7408	1.76%	0.284%
3	7.064	924	931	941	rBV	5418	15394	3.65%	0.590%
4	7.805	1048	1057	1063	rBV2	51251	123393	29.28%	4.726%
5	7.875	1063	1069	1082	rVB	96627	215542	51.15%	8.255%
6	8.234	1118	1130	1141	rVB2	46061	108408	25.72%	4.152%
7	8.781	1215	1223	1233	rVB	145599	290429	68.92%	11.124%
8	10.269	1468	1476	1487	rBV	228613	405302	96.18%	15.523%
9	10.669	1538	1544	1549	rBV3	5933	11536	2.74%	0.442%
10	11.581	1692	1699	1710	rBV	215467	380355	90.26%	14.568%
11	12.575	1862	1868	1877	rBV	173145	273515	64.90%	10.476%
12	13.522	2022	2029	2037	rBV	221933	358236	85.01%	13.721%

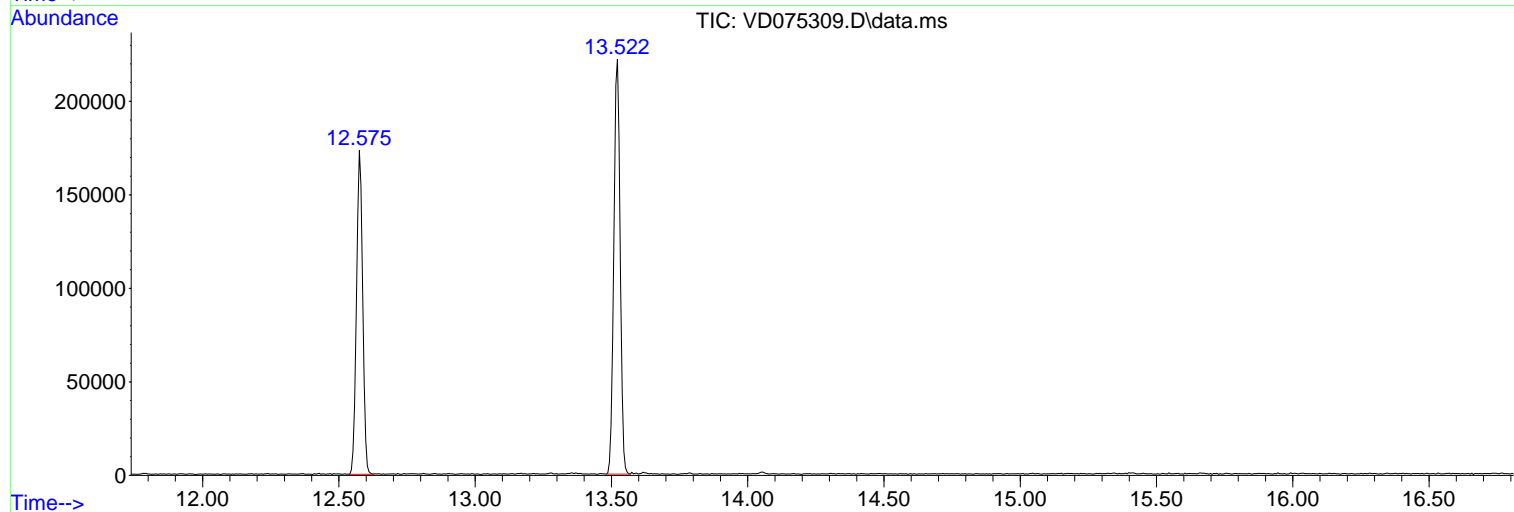
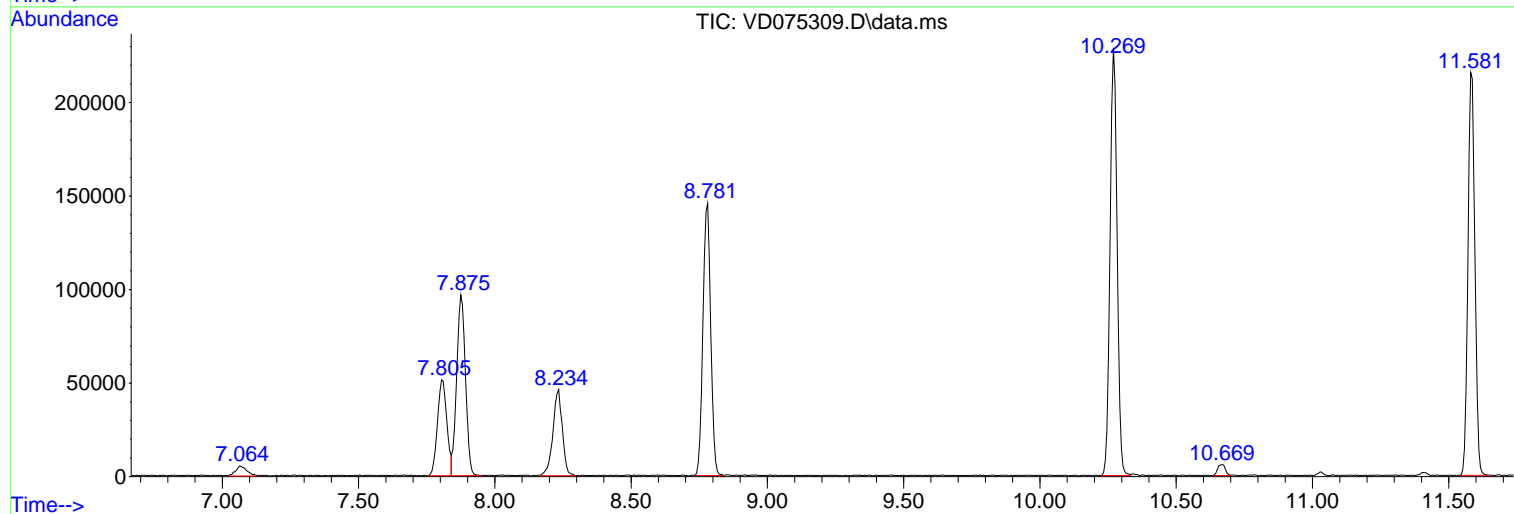
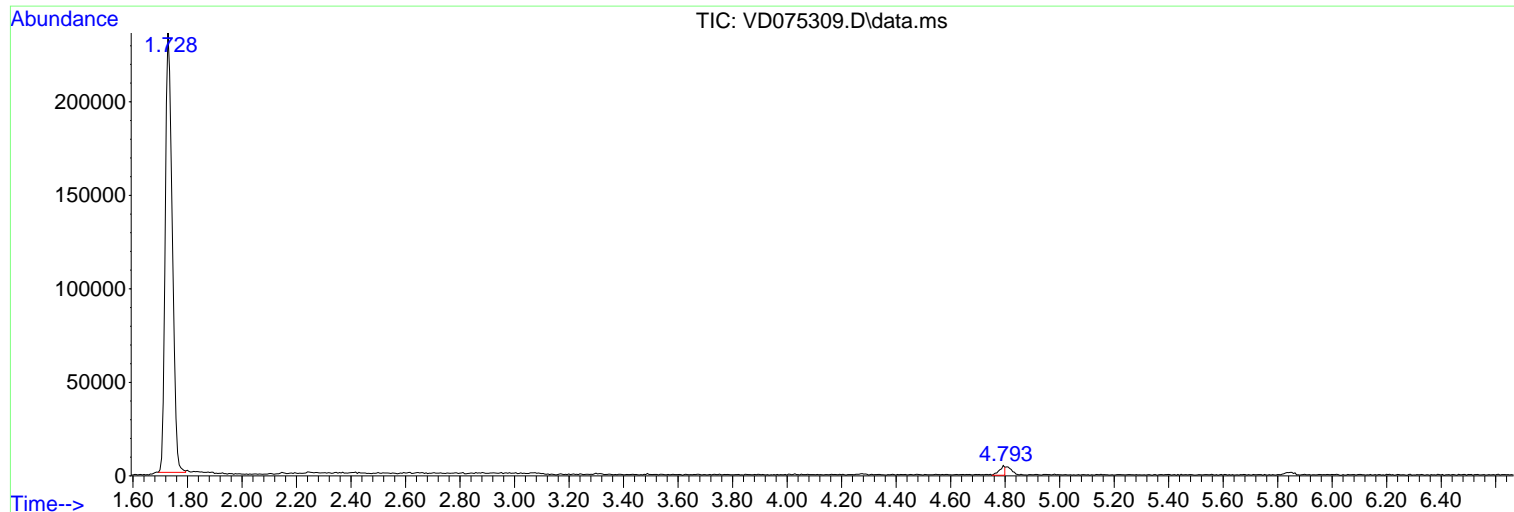
Sum of corrected areas: 2610933

Data Path : Z:\voasrv\HPCHEM1\MSVOA_D\Data\VD021023\
Data File : VD075309.D
Acq On : 10 Feb 2023 14:38
Operator : KP/SY
Sample : 01508-07
Misc : 3.45G/5.00ml/MSVOA_D/SOIL
ALS Vial : 7 Sample Multiplier: 1

Instrument :
MSVOA_D
ClientSampleId :
PA-1

Quant Method : Z:\voasrv\HPCHEM1\MSVOA_D\Method\82D020723S.M
Quant Title : SW846 8260

TIC Library : C:\Database\NIST20.L
TIC Integration Parameters: LSCINT.P



Library Search Compound Report

Data Path : Z:\voasrv\HPCHEM1\MSVOA_D\Data\VD021023\
Data File : VD075309.D
Acq On : 10 Feb 2023 14:38
Operator : KP/SY
Sample : 01508-07
Misc : 3.45G/5.00ml/MSVOA_D/SOIL
ALS Vial : 7 Sample Multiplier: 1

Instrument :
MSVOA_D
ClientSampleId :
PA-1

Quant Method : Z:\voasrv\HPCHEM1\MSVOA_D\Method\82D020723S.M
Quant Title : SW846 8260

TIC Library : C:\Database\NIST20.L
TIC Integration Parameters: LSCINT.P

No Library Search Compounds Detected

Data Path : Z:\voasrv\HPCHEM1\MSVOA_D\Data\VD021023\
Data File : VD075309.D
Acq On : 10 Feb 2023 14:38
Operator : KP/SY
Sample : 01508-07
Misc : 3.45G/5.00ml/MSVOA_D/SOIL
ALS Vial : 7 Sample Multiplier: 1

Instrument :
MSVOA_D
ClientSampleId :
PA-1

Quant Method : Z:\voasrv\HPCHEM1\MSVOA_D\Method\82D020723S.M
Quant Title : SW846 8260

TIC Library : C:\Database\NIST20.L
TIC Integration Parameters: LSCINT.P

TIC Top Hit name	RT	EstConc	Units	Response	--Internal Standard--			
					#	RT	Resp	Conc
