

Data Path : Z:\voasrv\HPCHEM1\MSVOA_D\Data\VD042222\
 Data File : VD072693.D
 Acq On : 22 Apr 2022 14:45
 Operator : VA/SY
 Sample : N2480-13
 Misc : 4.63G/5.00ml/MSVOA_D/SOIL
 ALS Vial : 11 Sample Multiplier: 1

Instrument :
 MSVOA_D
 ClientSampleId :
 WC-16-1A-4-GR

Quant Time: Apr 22 23:45:38 2022
 Quant Method : Z:\voasrv\HPCHEM1\MSVOA_D\Method\82D032922S.M
 Quant Title : SW846 8260
 QLast Update : Wed Mar 30 02:44:36 2022
 Response via : Initial Calibration

Compound	R.T.	QIon	Response	Conc	Units	Dev(Min)
Internal Standards						
1) Pentafluorobenzene	7.979	168	469968	50.000	ug/l	0.00
34) 1,4-Difluorobenzene	8.861	114	845191	50.000	ug/l	0.00
63) Chlorobenzene-d5	11.638	117	723806	50.000	ug/l	0.00
72) 1,4-Dichlorobenzene-d4	13.561	152	254337	50.000	ug/l	0.00
System Monitoring Compounds						
33) 1,2-Dichloroethane-d4	8.326	65	257908	45.365	ug/l	0.00
Spiked Amount	50.000	Range	50 - 163	Recovery	=	90.720%
35) Dibromofluoromethane	7.914	113	262776	40.006	ug/l	0.00
Spiked Amount	50.000	Range	54 - 147	Recovery	=	80.020%
50) Toluene-d8	10.332	98	1091447	47.804	ug/l	0.00
Spiked Amount	50.000	Range	49 - 140	Recovery	=	95.600%
62) 4-Bromofluorobenzene	12.620	95	430640	48.295	ug/l	0.00
Spiked Amount	50.000	Range	25 - 144	Recovery	=	96.600%
Target Compounds						
						Qvalue
10) Methyl Iodide	4.315	142	1272	3.965	ug/l #	79
13) Acrolein	4.126	56	2874	21.572	ug/l	96
14) Allyl chloride	4.956	41	38995	6.269	ug/l #	61
15) Acrylonitrile	5.503	53	16038	13.330	ug/l #	25
16) Acetone	4.150	43	57184	53.942	ug/l	97
17) Carbon Disulfide	4.415	76	8318	4.470	ug/l	97
18) Methyl Acetate	4.944	43	75208	25.182	ug/l #	55
20) Methylene Chloride	4.956	84	17455	2.766	ug/l #	70
23) Vinyl Acetate	6.326	43	472	6.339	ug/l #	75
25) 2-Butanone	7.203	43	28494	19.435	ug/l #	88
29) Tetrahydrofuran	7.567	42	1001	1.131	ug/l #	47
31) Cyclohexane	7.985	56	54631	7.349	ug/l #	80
36) 1,1-Dichloropropene	7.979	75	36184	5.338	ug/l #	55
37) Ethyl Acetate	7.203	43	28494	8.187	ug/l #	74
38) Carbon Tetrachloride	7.979	117	49332	5.452	ug/l #	18
39) Methylcyclohexane	9.350	83	380106	39.523	ug/l	95
41) Methacrylonitrile	7.561	41	3074	3.119	ug/l #	43
43) Isopropyl Acetate	8.444	43	123281	18.466	ug/l #	54
47) Bromodichloromethane	9.626	83	25147	2.615	ug/l #	36
48) Methyl methacrylate	9.403	41	72418	22.343	ug/l #	49
51) 4-Methyl-2-Pentanone	10.220	43	11995	3.349	ug/l #	47
55) 1,1,2-Trichloroethane	10.767	97	312774	61.624	ug/l #	20
56) Ethyl methacrylate	10.673	69	167784	27.436	ug/l #	28
59) 2-Hexanone	10.944	43	184618	75.789	ug/l #	35
68) m/p-Xylenes	11.838	106	17624	1.645	ug/l #	62
73) Isopropylbenzene	12.473	105	35847	1.745	ug/l	98
74) N-amyl acetate	12.255	43	570010	132.259	ug/l #	45
75) 1,1,2,2-Tetrachloroethane	12.691	83	158573	40.758	ug/l #	25
76) 1,2,3-Trichloropropane	12.620	75	144028	51.921	ug/l #	100
78) n-propylbenzene	12.879	91	25955	1.047	ug/l	80
79) 2-Chlorotoluene	12.879	91	32635	2.252	ug/l #	42
81) trans-1,4-Dichloro-2-b...	12.620	75	144028	127.405	ug/l #	24
83) tert-Butylbenzene	13.208	119	19623	1.288	ug/l #	19
84) 1,2,4-Trimethylbenzene	13.255	105	17720	1.030	ug/l	96
85) sec-Butylbenzene	13.391	105	70171	3.059	ug/l #	74
86) p-Isopropyltoluene	13.661	119	29090	1.551	ug/l	96

Data Path : Z:\voasrv\HPCHEM1\MSVOA_D\Data\VD042222\
Data File : VD072693.D
Acq On : 22 Apr 2022 14:45
Operator : VA/SY
Sample : N2480-13
Misc : 4.63G/5.00ml/MSVOA_D/SOIL
ALS Vial : 11 Sample Multiplier: 1

Instrument :
MSVOA_D
ClientSampleId :
WC-16-1A-4-GR

Quant Time: Apr 22 23:45:38 2022
Quant Method : Z:\voasrv\HPCHEM1\MSVOA_D\Method\82D032922S.M
Quant Title : SW846 8260
QLast Update : Wed Mar 30 02:44:36 2022
Response via : Initial Calibration

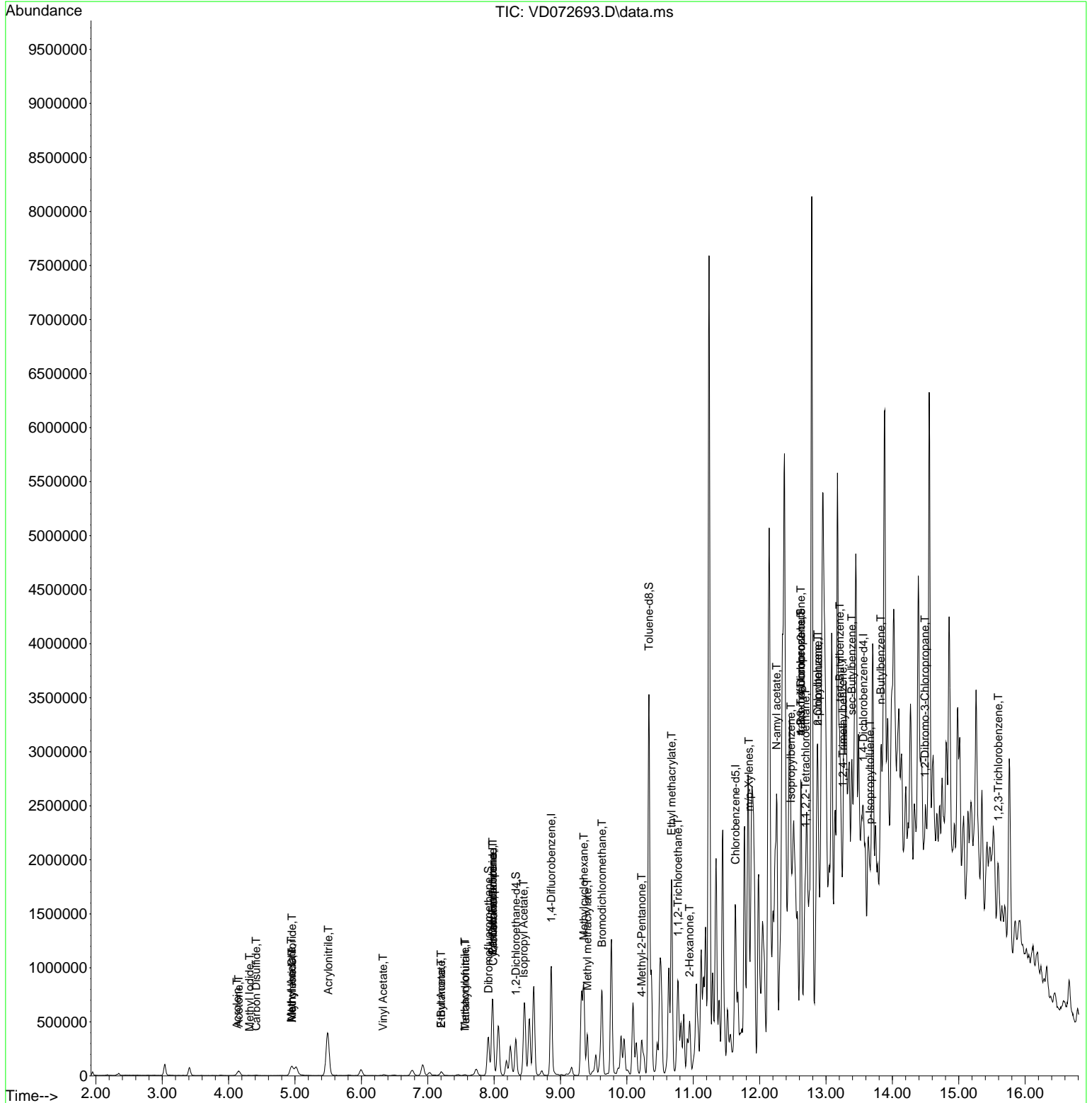
Compound	R.T.	QIon	Response	Conc	Units	Dev(Min)
89) n-Butylbenzene	13.826	91	51871	2.904	ug/l	91
92) 1,2-Dibromo-3-Chloropr...	14.490	75	670	1.164	ug/l #	49
96) 1,2,3-Trichlorobenzene	15.596	180	18748	4.119	ug/l #	12

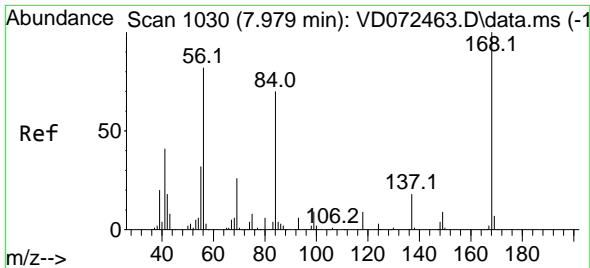
(#) = qualifier out of range (m) = manual integration (+) = signals summed

Data Path : Z:\voasrv\HPCHEM1\MSVOA_D\Data\VD042222\
 Data File : VD072693.D
 Acq On : 22 Apr 2022 14:45
 Operator : VA/SY
 Sample : N2480-13
 Misc : 4.63G/5.00ml/MSVOA_D/SOIL
 ALS Vial : 11 Sample Multiplier: 1

Instrument :
 MSVOA_D
 ClientSampleId :
 WC-16-1A-4-GR

Quant Time: Apr 22 23:45:38 2022
 Quant Method : Z:\voasrv\HPCHEM1\MSVOA_D\Method\82D032922S.M
 Quant Title : SW846 8260
 QLast Update : Wed Mar 30 02:44:36 2022
 Response via : Initial Calibration

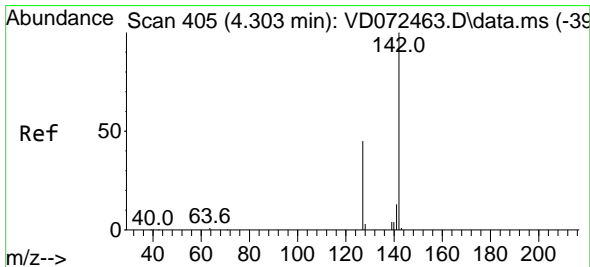
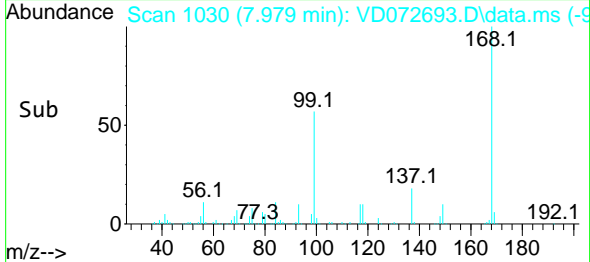
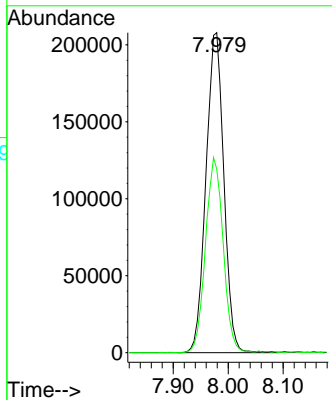
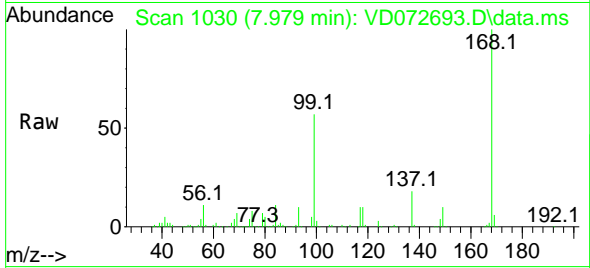




#1
 Pentafluorobenzene
 Concen: 50.000 ug/l
 RT: 7.979 min Scan# 10
 Delta R.T. 0.000 min
 Lab File: VD072693.D
 Acq: 22 Apr 2022 14:45

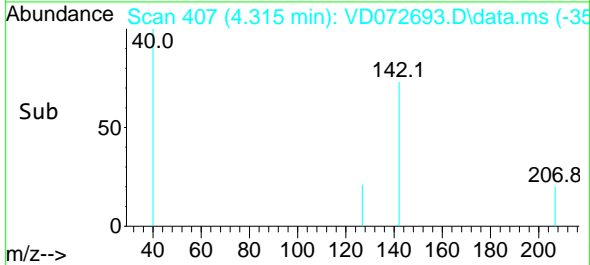
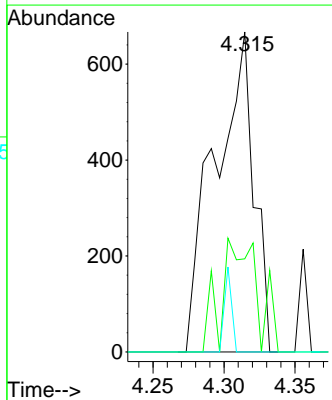
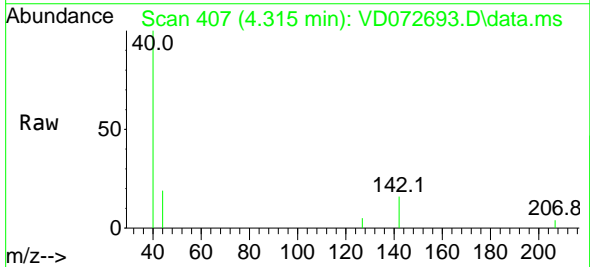
Instrument :
 MSVOA_D
 ClientSampleId :
 WC-16-1A-4-GR

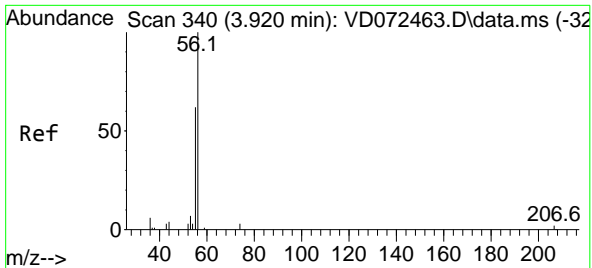
Tgt Ion:168 Resp: 469968
 Ion Ratio Lower Upper
 168 100
 99 57.3 49.8 74.6



#10
 Methyl Iodide
 Concen: 3.965 ug/l
 RT: 4.315 min Scan# 407
 Delta R.T. 0.012 min
 Lab File: VD072693.D
 Acq: 22 Apr 2022 14:45

Tgt Ion:142 Resp: 1272
 Ion Ratio Lower Upper
 142 100
 127 33.0 37.3 55.9#
 141 4.9 11.7 17.5#

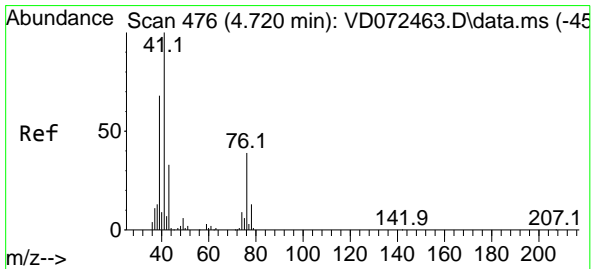
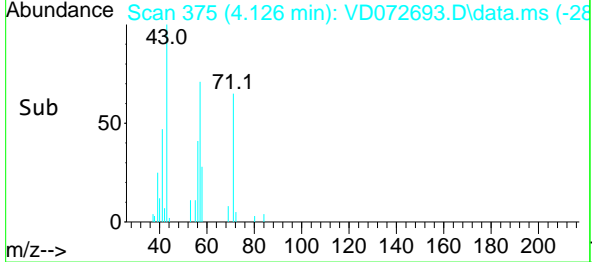
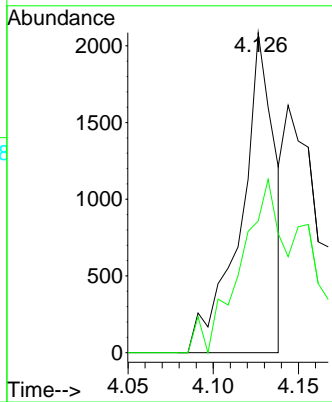
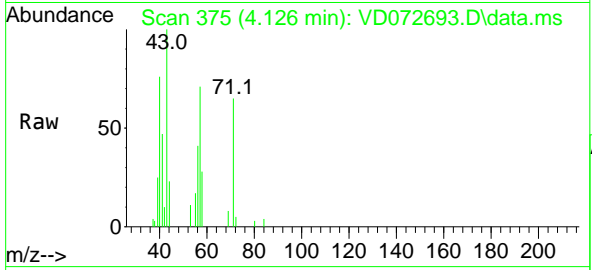




#13
 Acrolein
 Concen: 21.572 ug/l
 RT: 4.126 min Scan# 311
 Delta R.T. 0.206 min
 Lab File: VD072693.D
 Acq: 22 Apr 2022 14:45

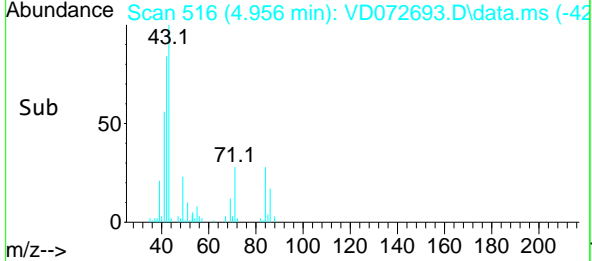
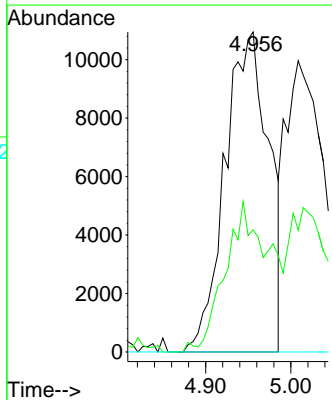
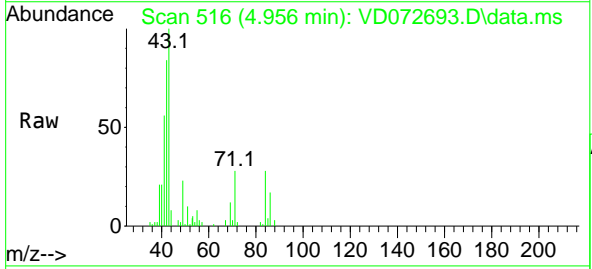
Instrument : MSVOA_D
 ClientSampleId : WC-16-1A-4-GR

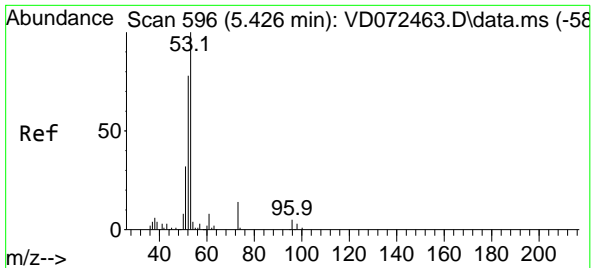
Tgt Ion: 56 Resp: 2874
 Ion Ratio Lower Upper
 56 100
 55 68.4 57.1 85.7



#14
 Allyl chloride
 Concen: 6.269 ug/l
 RT: 4.956 min Scan# 516
 Delta R.T. 0.236 min
 Lab File: VD072693.D
 Acq: 22 Apr 2022 14:45

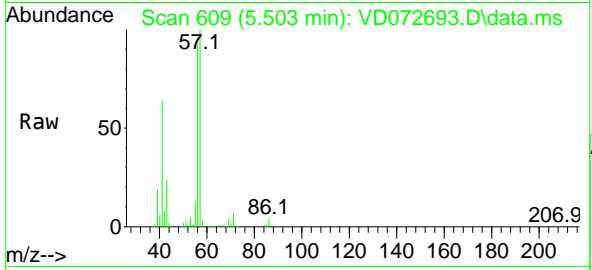
Tgt Ion: 41 Resp: 38995
 Ion Ratio Lower Upper
 41 100
 39 47.7 59.3 88.9#
 76 0.0 25.7 38.5#





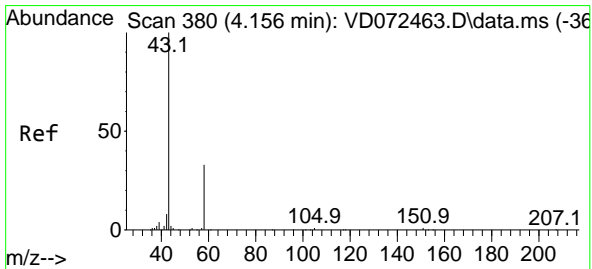
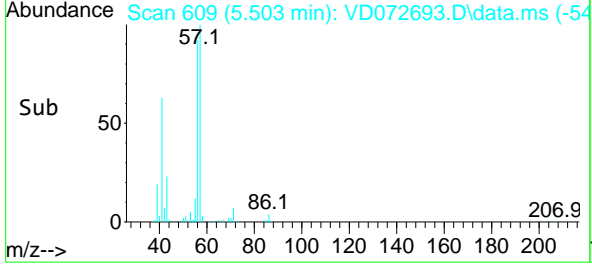
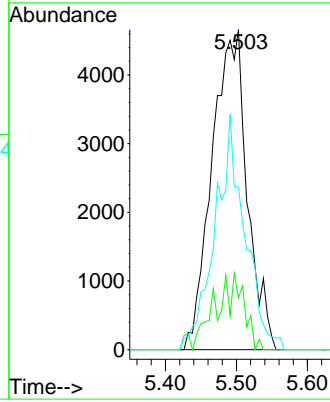
#15
 Acrylonitrile
 Concen: 13.330 ug/l
 RT: 5.503 min Scan# 609
 Delta R.T. 0.077 min
 Lab File: VD072693.D
 Acq: 22 Apr 2022 14:45

Instrument : MSVOA_D
 ClientSampleId : WC-16-1A-4-GR

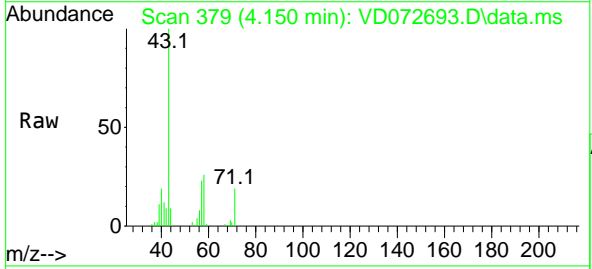


Tgt Ion: 53 Resp: 16038

Ion	Ratio	Lower	Upper
53	100		
52	2.1	67.2	100.8#
51	61.9	30.3	45.5#

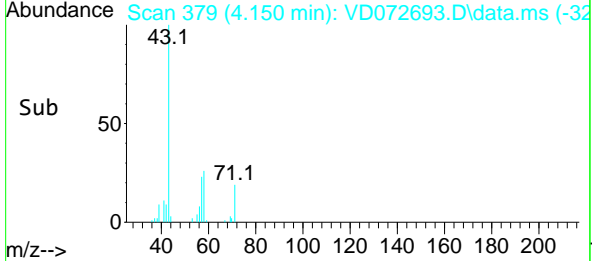
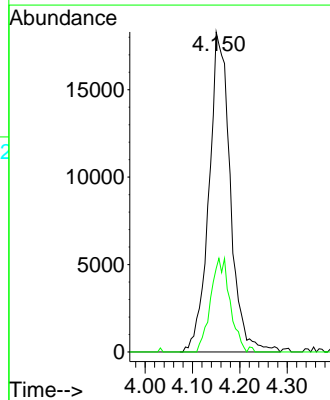


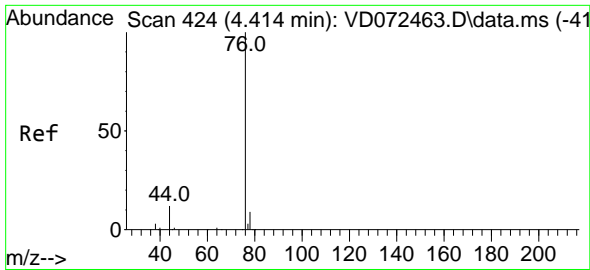
#16
 Acetone
 Concen: 53.942 ug/l
 RT: 4.150 min Scan# 379
 Delta R.T. -0.006 min
 Lab File: VD072693.D
 Acq: 22 Apr 2022 14:45



Tgt Ion: 43 Resp: 57184

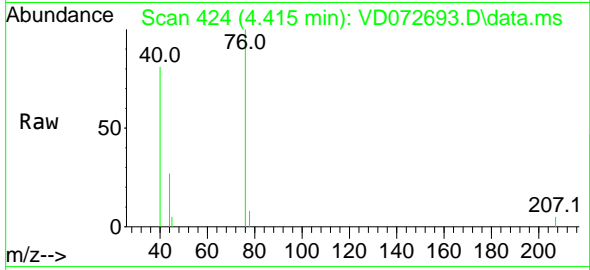
Ion	Ratio	Lower	Upper
43	100		
58	26.1	22.1	33.1



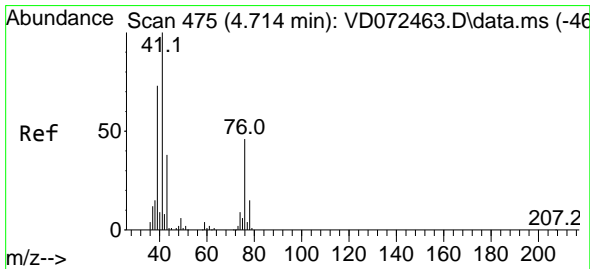
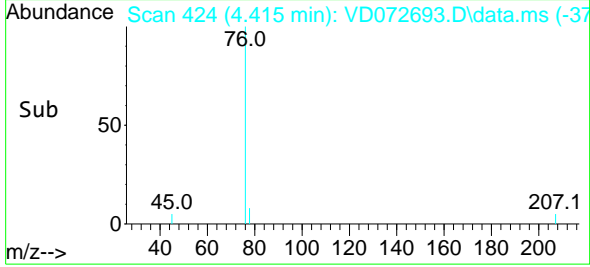
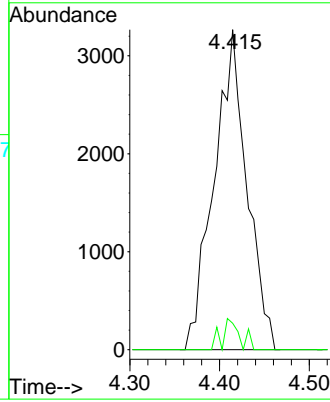


#17
 Carbon Disulfide
 Concen: 4.470 ug/l
 RT: 4.415 min Scan# 41
 Delta R.T. 0.001 min
 Lab File: VD072693.D
 Acq: 22 Apr 2022 14:45

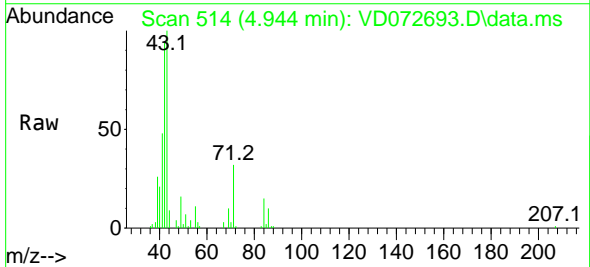
Instrument :
 MSVOA_D
 ClientSampleId :
 WC-16-1A-4-GR



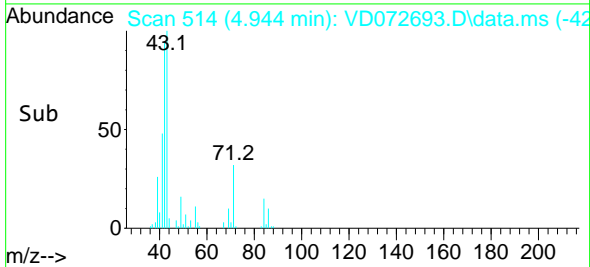
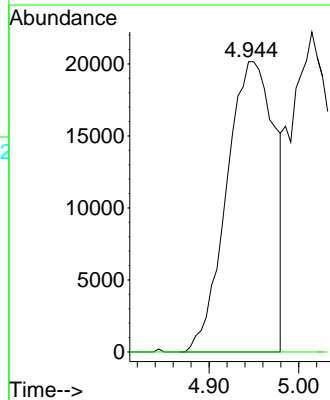
Tgt Ion: 76 Resp: 8318
 Ion Ratio Lower Upper
 76 100
 78 8.3 7.5 11.3

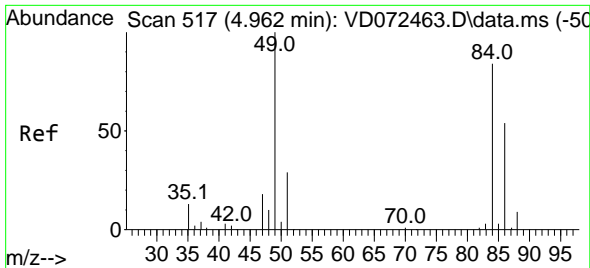


#18
 Methyl Acetate
 Concen: 25.182 ug/l
 RT: 4.944 min Scan# 514
 Delta R.T. 0.229 min
 Lab File: VD072693.D
 Acq: 22 Apr 2022 14:45



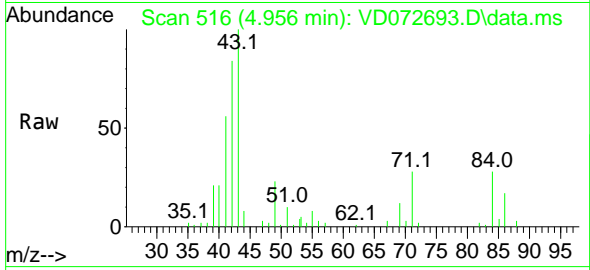
Tgt Ion: 43 Resp: 75208
 Ion Ratio Lower Upper
 43 100
 74 0.0 16.7 25.1#





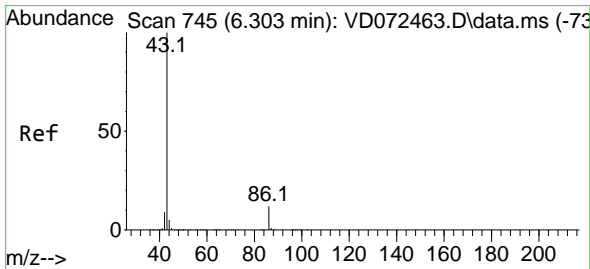
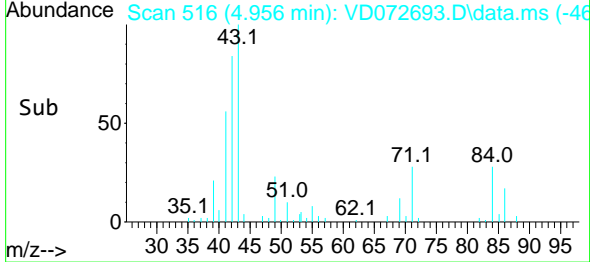
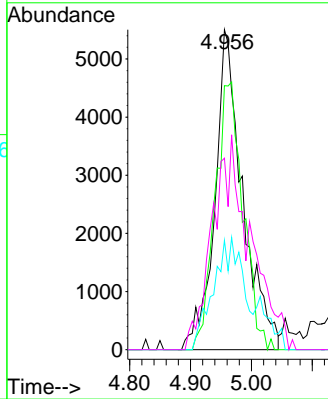
#20
 Methylene Chloride
 Concen: 2.766 ug/l
 RT: 4.956 min Scan# 516
 Delta R.T. -0.006 min
 Lab File: VD072693.D
 Acq: 22 Apr 2022 14:45

Instrument : MSVOA_D
 ClientSampleId : WC-16-1A-4-GR



Tgt Ion: 84 Resp: 17455

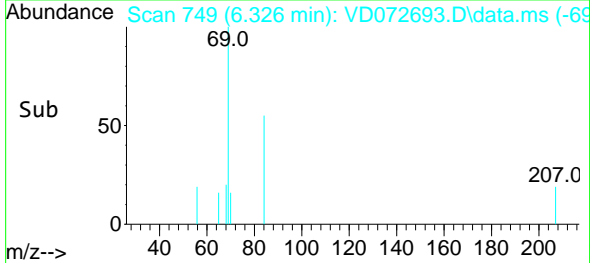
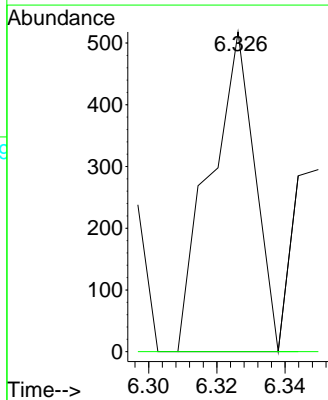
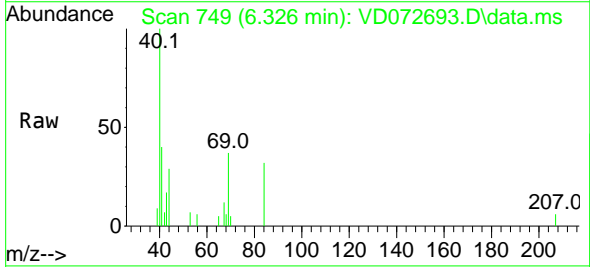
Ion	Ratio	Lower	Upper
84	100		
49	82.5	112.8	169.2#
51	34.1	32.6	48.8
86	59.9	47.9	71.9

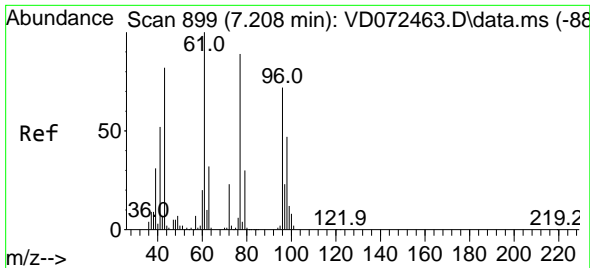


#23
 Vinyl Acetate
 Concen: 6.339 ug/l
 RT: 6.326 min Scan# 749
 Delta R.T. 0.023 min
 Lab File: VD072693.D
 Acq: 22 Apr 2022 14:45

Tgt Ion: 43 Resp: 472

Ion	Ratio	Lower	Upper
43	100		
86	0.0	7.1	10.7#

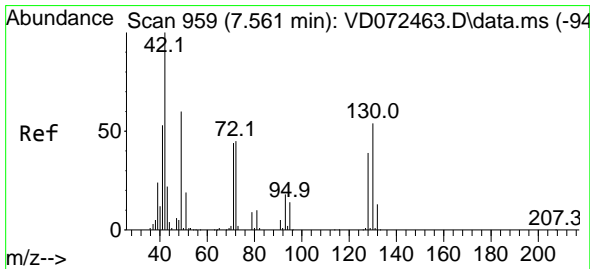
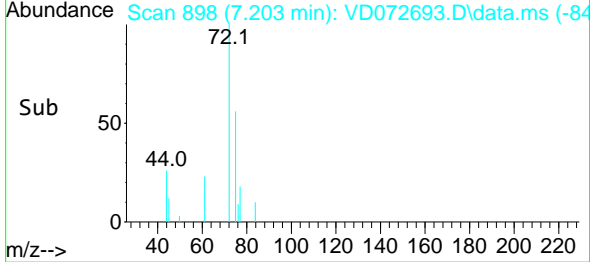
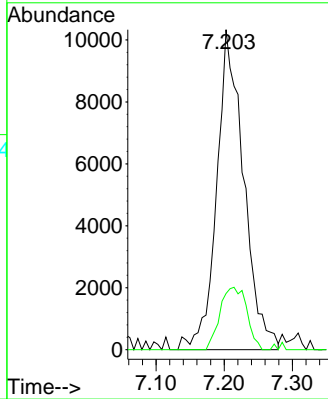
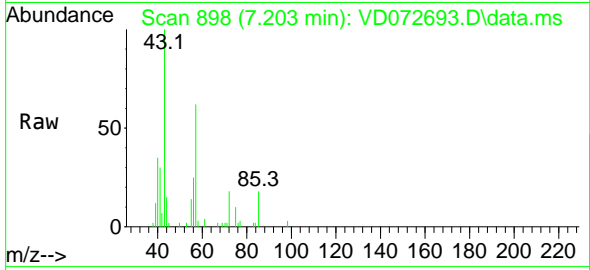




#25
 2-Butanone
 Concen: 19.435 ug/l
 RT: 7.203 min Scan# 899
 Delta R.T. -0.006 min
 Lab File: VD072693.D
 Acq: 22 Apr 2022 14:45

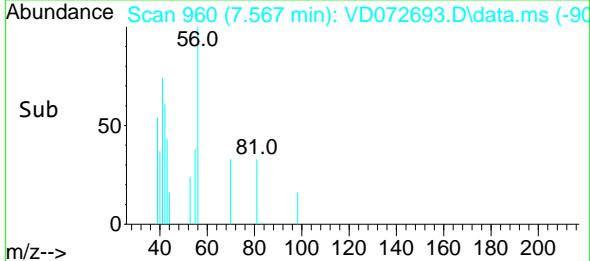
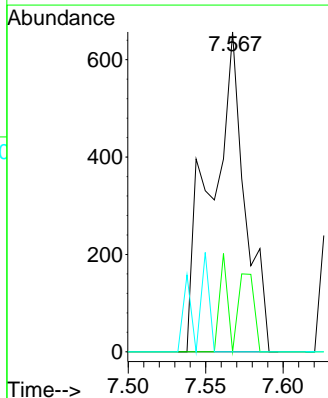
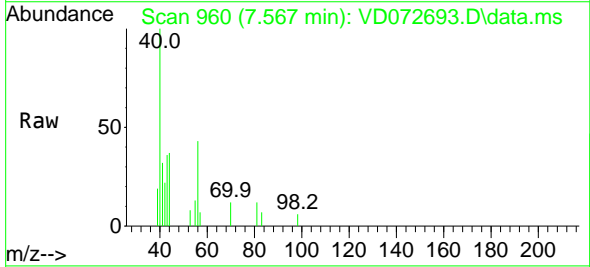
Instrument : MSVOA_D
 ClientSampleId : WC-16-1A-4-GR

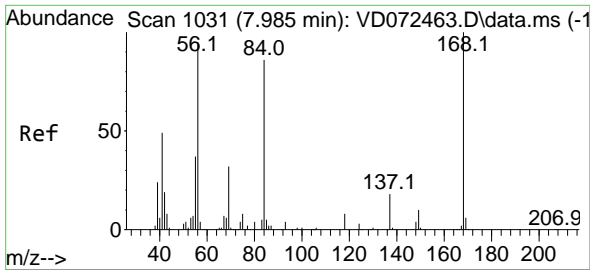
Tgt Ion: 43 Resp: 28494
 Ion Ratio Lower Upper
 43 100
 72 17.5 18.6 27.8#



#29
 Tetrahydrofuran
 Concen: 1.131 ug/l
 RT: 7.567 min Scan# 960
 Delta R.T. 0.006 min
 Lab File: VD072693.D
 Acq: 22 Apr 2022 14:45

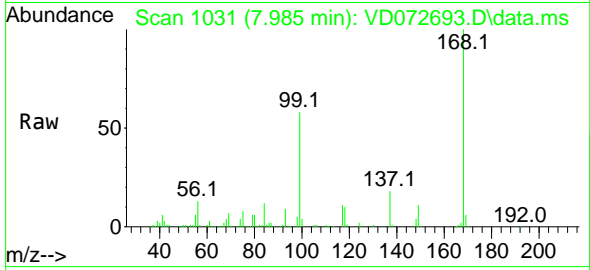
Tgt Ion: 42 Resp: 1001
 Ion Ratio Lower Upper
 42 100
 72 11.3 30.7 46.1#
 71 0.0 28.6 43.0#



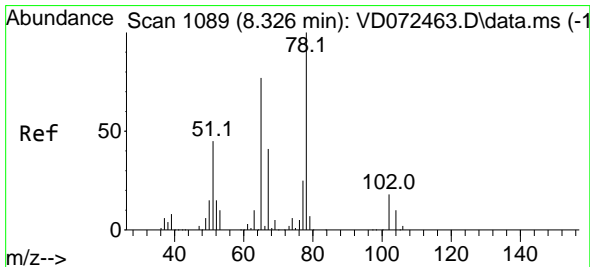
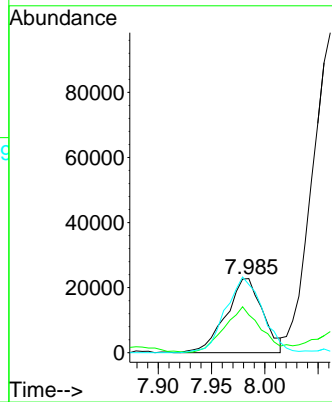
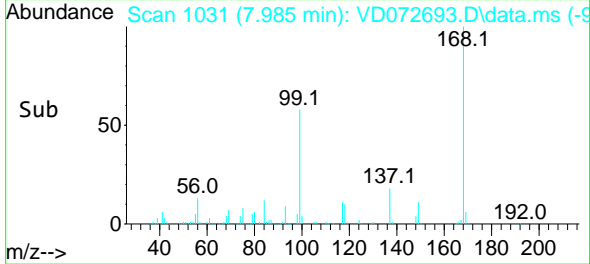


#31
 Cyclohexane
 Concen: 7.349 ug/l
 RT: 7.985 min Scan# 1031
 Delta R.T. 0.000 min
 Lab File: VD072693.D
 Acq: 22 Apr 2022 14:45

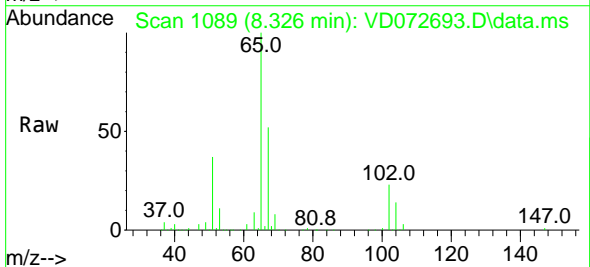
Instrument : MSVOA_D
 ClientSampleId : WC-16-1A-4-GR



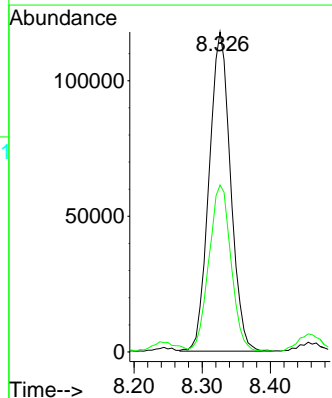
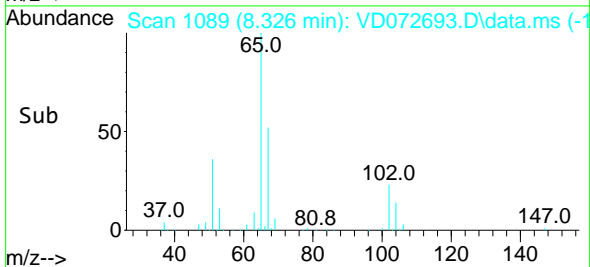
Tgt Ion: 56 Resp: 54631
 Ion Ratio Lower Upper
 56 100
 69 49.8 25.4 38.2#
 84 92.1 63.0 94.4

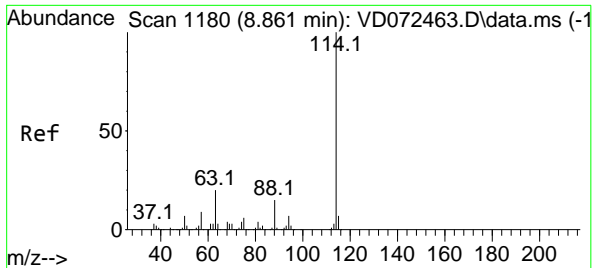


#33
 1,2-Dichloroethane-d4
 Concen: 45.365 ug/l
 RT: 8.326 min Scan# 1089
 Delta R.T. 0.000 min
 Lab File: VD072693.D
 Acq: 22 Apr 2022 14:45



Tgt Ion: 65 Resp: 257908
 Ion Ratio Lower Upper
 65 100
 67 53.8 0.0 101.4

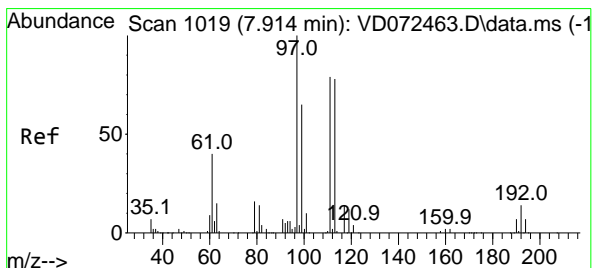
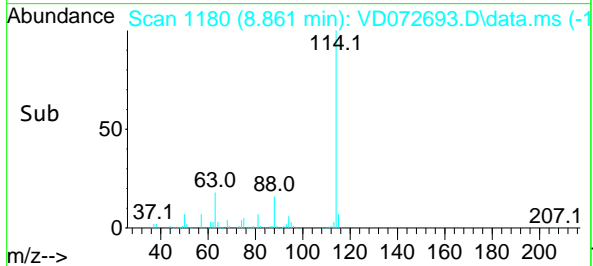
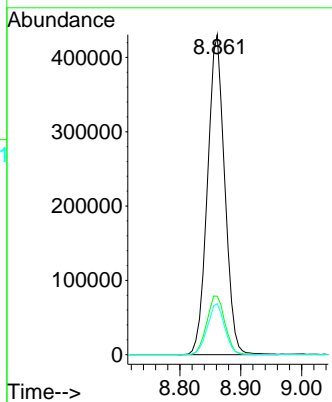
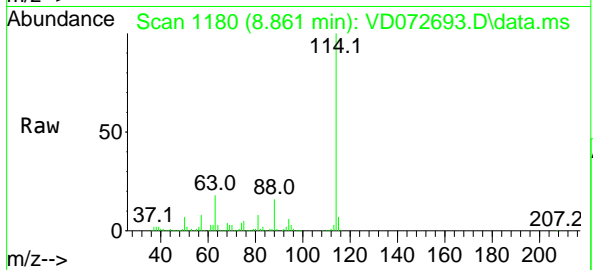




#34
 1,4-Difluorobenzene
 Concen: 50.000 ug/l
 RT: 8.861 min Scan# 11180
 Delta R.T. 0.000 min
 Lab File: VD072693.D
 Acq: 22 Apr 2022 14:45

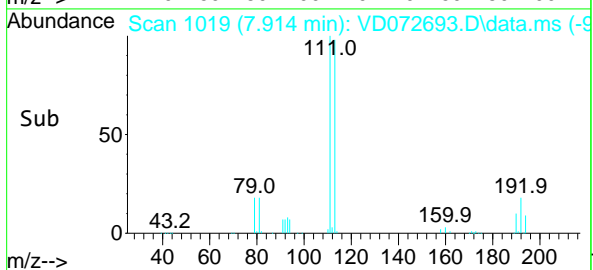
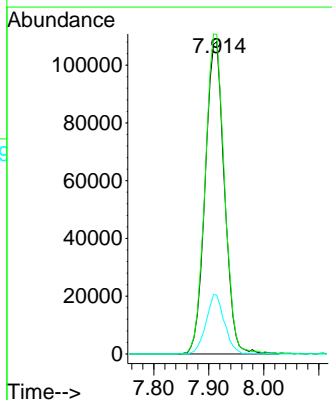
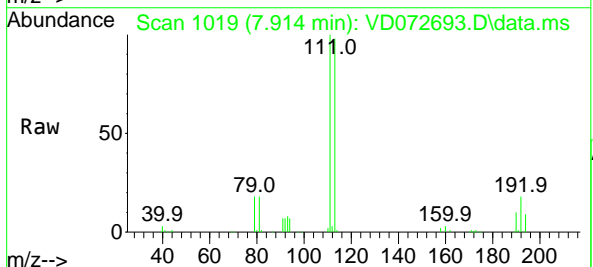
Instrument : MSVOA_D
 ClientSampleId : WC-16-1A-4-GR

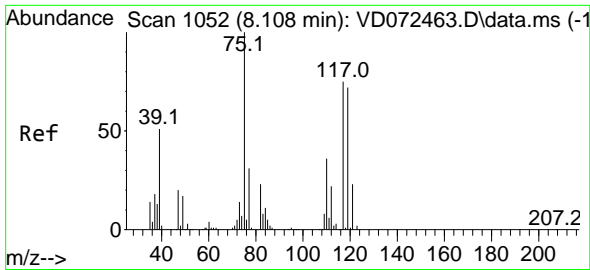
Tgt Ion	Resp	Lower	Upper
114	100		
63	18.2	0.0	46.6
88	15.9	0.0	33.2



#35
 Dibromofluoromethane
 Concen: 40.006 ug/l
 RT: 7.914 min Scan# 1019
 Delta R.T. 0.000 min
 Lab File: VD072693.D
 Acq: 22 Apr 2022 14:45

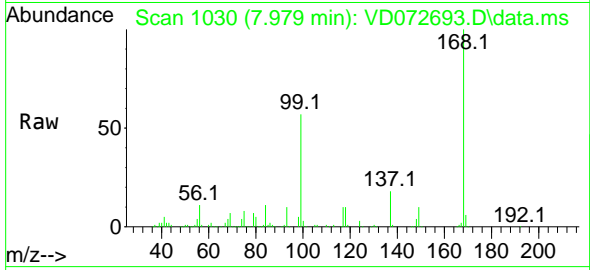
Tgt Ion	Resp	Lower	Upper
113	100		
111	103.1	83.8	125.6
192	18.2	14.6	21.8



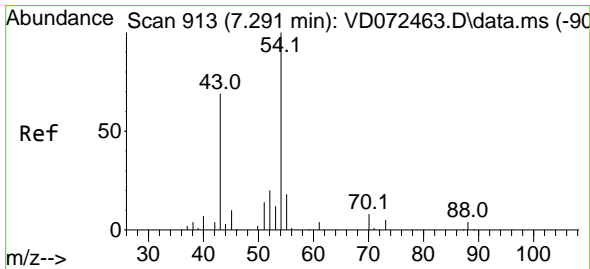
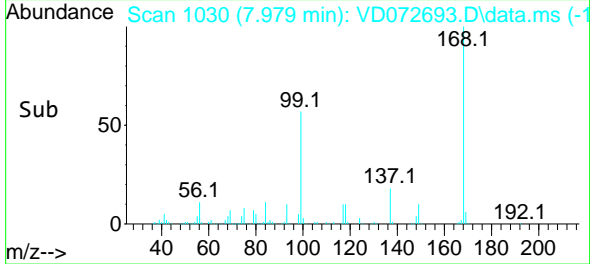
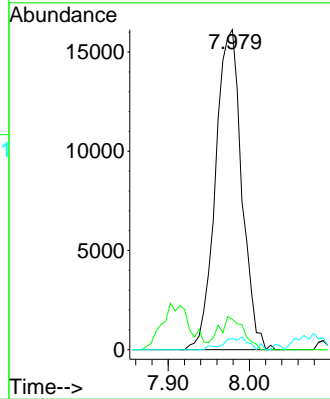


#36
 1,1-Dichloropropene
 Concen: 5.338 ug/l
 RT: 7.979 min Scan# 1052
 Delta R.T. -0.129 min
 Lab File: VD072693.D
 Acq: 22 Apr 2022 14:45

Instrument : MSVOA_D
 ClientSampleId : WC-16-1A-4-GR

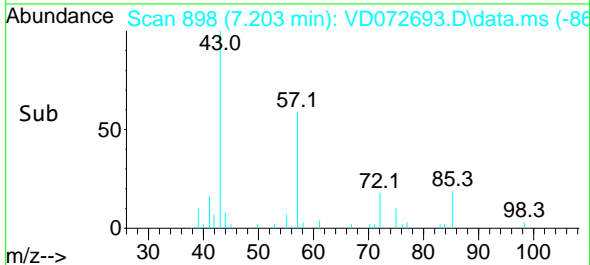
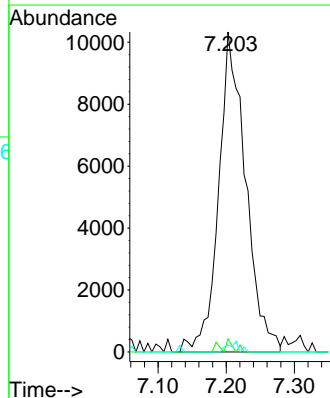
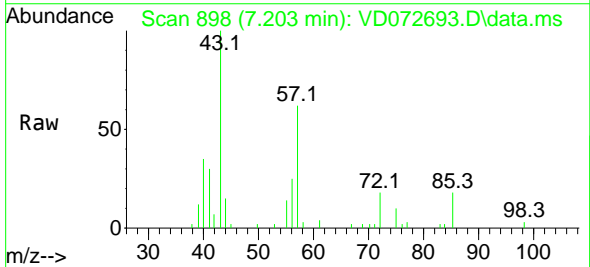


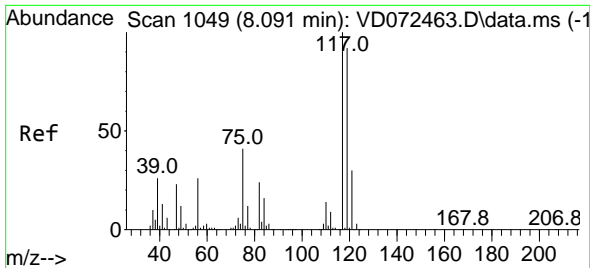
Tgt Ion: 75 Resp: 36184
 Ion Ratio Lower Upper
 75 100
 110 9.6 16.4 49.1#
 77 3.8 24.2 36.2#



#37
 Ethyl Acetate
 Concen: 8.187 ug/l
 RT: 7.203 min Scan# 898
 Delta R.T. -0.088 min
 Lab File: VD072693.D
 Acq: 22 Apr 2022 14:45

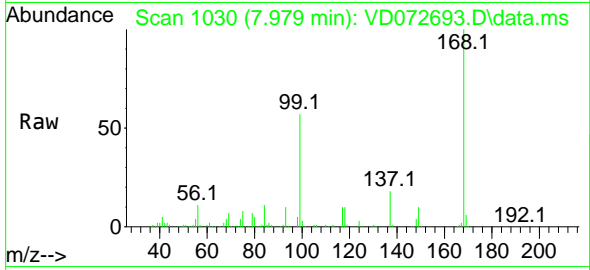
Tgt Ion: 43 Resp: 28494
 Ion Ratio Lower Upper
 43 100
 61 0.8 9.8 14.8#
 70 1.3 6.9 10.3#



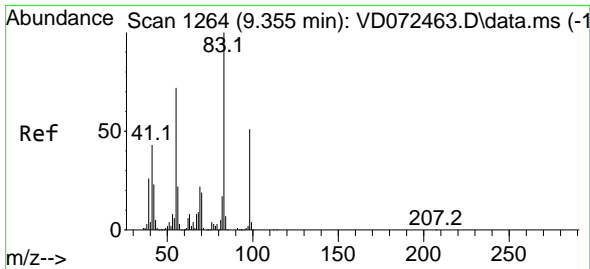
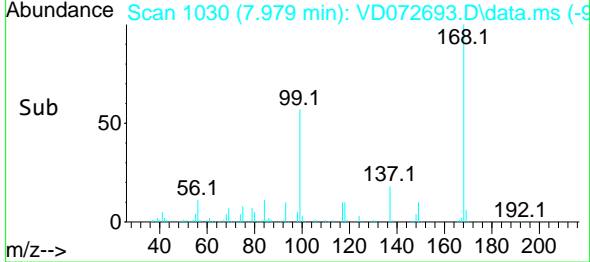
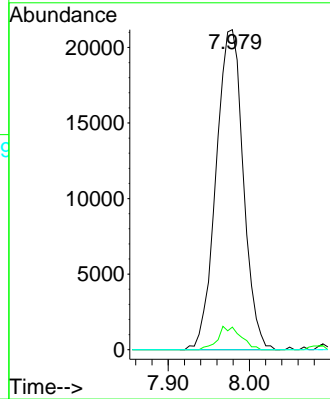


#38
 Carbon Tetrachloride
 Concen: 5.452 ug/l
 RT: 7.979 min Scan# 1049
 Delta R.T. -0.112 min
 Lab File: VD072693.D
 Acq: 22 Apr 2022 14:45

Instrument : MSVOA_D
 ClientSampleId : WC-16-1A-4-GR

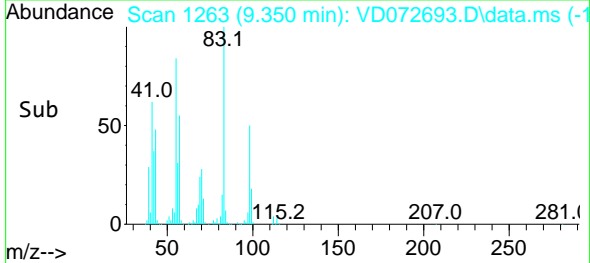
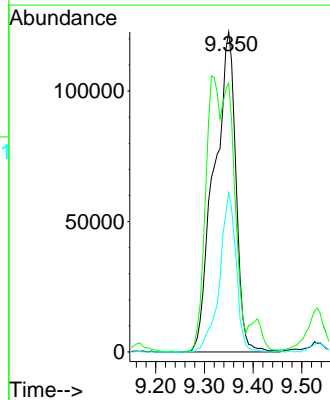
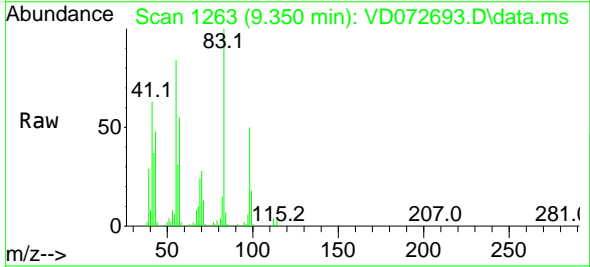


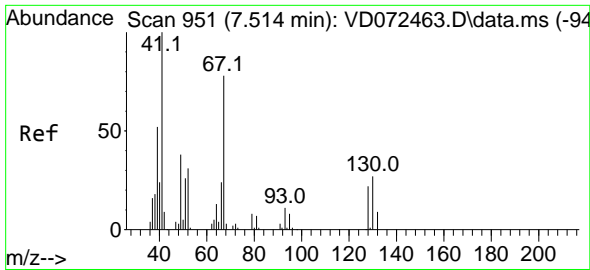
Tgt Ion: 117 Resp: 49332
 Ion Ratio Lower Upper
 117 100
 119 7.0 75.8 113.6#
 121 0.0 24.5 36.7#



#39
 Methylcyclohexane
 Concen: 39.523 ug/l
 RT: 9.350 min Scan# 1263
 Delta R.T. -0.005 min
 Lab File: VD072693.D
 Acq: 22 Apr 2022 14:45

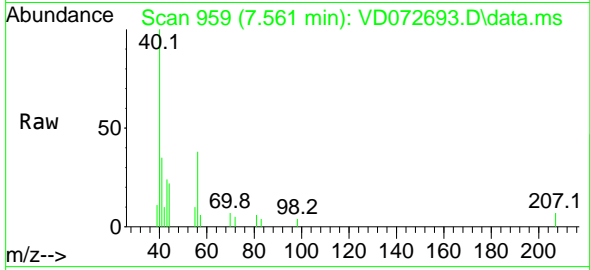
Tgt Ion: 83 Resp: 380106
 Ion Ratio Lower Upper
 83 100
 55 84.0 63.2 94.8
 98 49.8 38.2 57.4





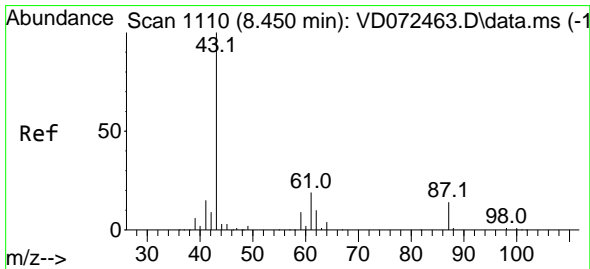
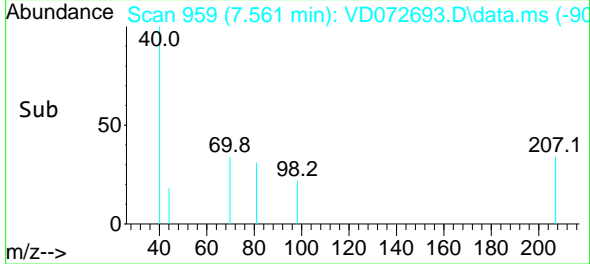
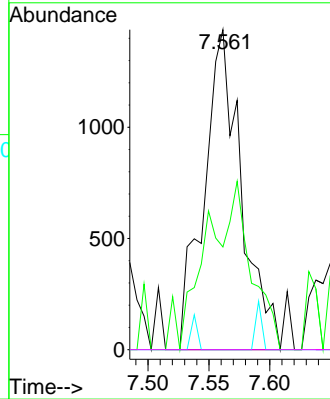
#41
 Methacrylonitrile
 Concen: 3.119 ug/l
 RT: 7.561 min Scan# 91
 Delta R.T. 0.047 min
 Lab File: VD072693.D
 Acq: 22 Apr 2022 14:45

Instrument :
 MSVOA_D
 ClientSampleId :
 WC-16-1A-4-GR



Tgt Ion: 41 Resp: 3074

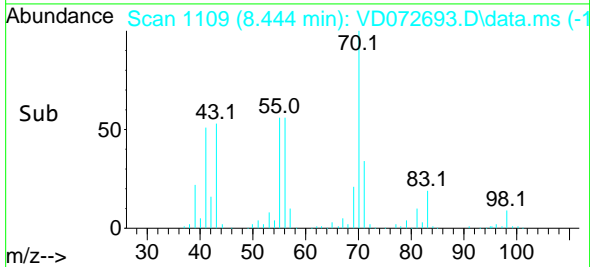
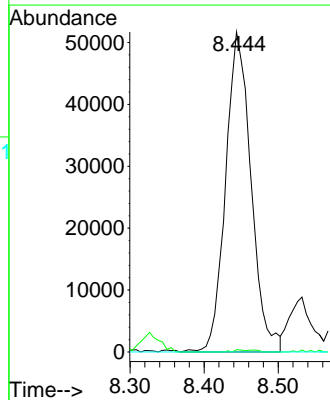
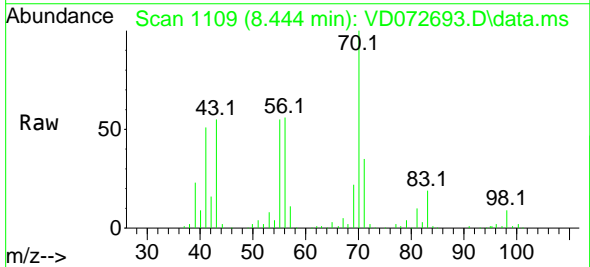
Ion	Ratio	Lower	Upper
41	100		
39	31.6	44.6	67.0#
67	0.0	48.2	72.4#
52	0.0	22.8	34.2#

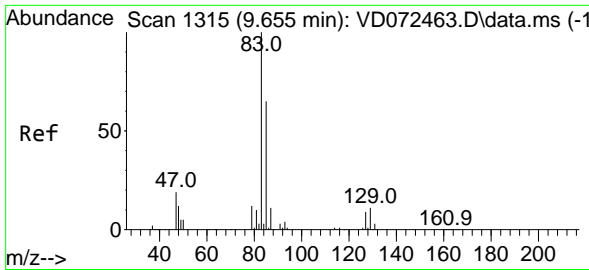


#43
 Isopropyl Acetate
 Concen: 18.466 ug/l
 RT: 8.444 min Scan# 1109
 Delta R.T. -0.006 min
 Lab File: VD072693.D
 Acq: 22 Apr 2022 14:45

Tgt Ion: 43 Resp: 123281

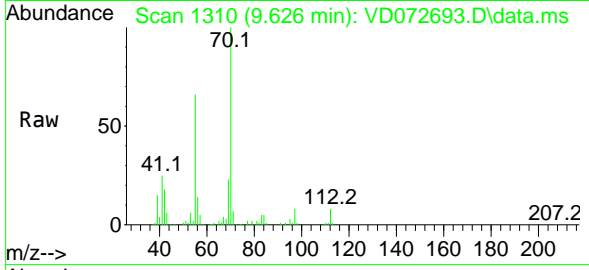
Ion	Ratio	Lower	Upper
43	100		
61	0.3	22.4	33.6#
87	0.0	8.7	13.1#



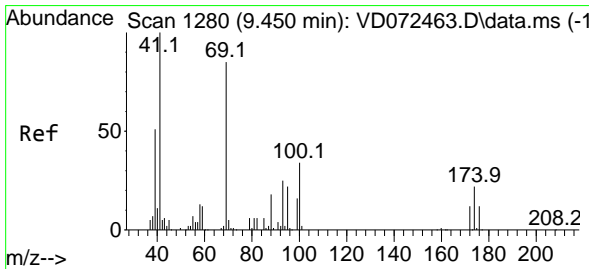
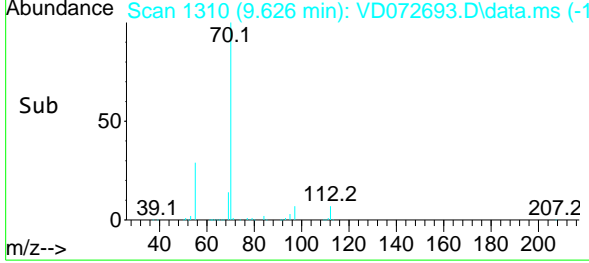
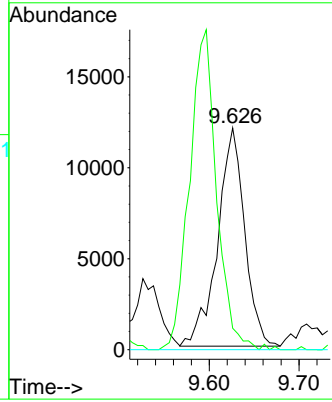


#47
 Bromodichloromethane
 Concen: 2.615 ug/l
 RT: 9.626 min Scan# 111
 Delta R.T. -0.029 min
 Lab File: VD072693.D
 Acq: 22 Apr 2022 14:45

Instrument : MSVOA_D
 ClientSampleId : WC-16-1A-4-GR

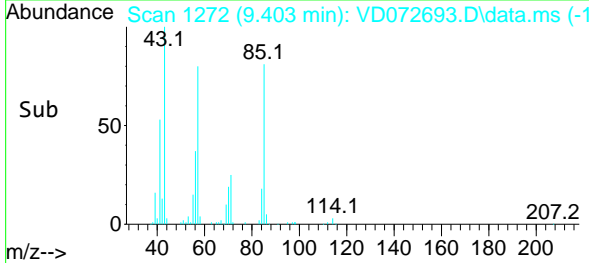
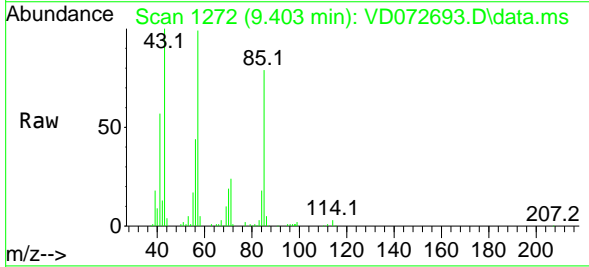
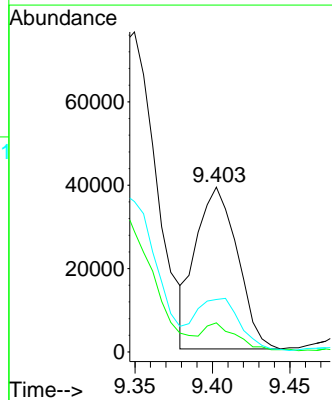


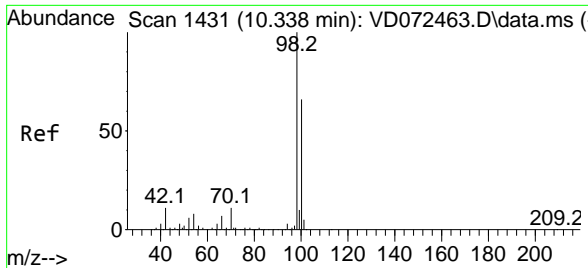
Tgt Ion: 83 Resp: 25147
 Ion Ratio Lower Upper
 83 100
 85 9.8 51.4 77.0#
 127 0.0 6.1 9.1#



#48
 Methyl methacrylate
 Concen: 22.343 ug/l
 RT: 9.403 min Scan# 1272
 Delta R.T. -0.047 min
 Lab File: VD072693.D
 Acq: 22 Apr 2022 14:45

Tgt Ion: 41 Resp: 72418
 Ion Ratio Lower Upper
 41 100
 69 13.4 56.7 85.1#
 39 35.0 42.7 64.1#

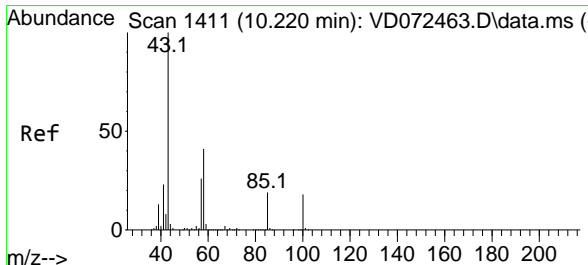
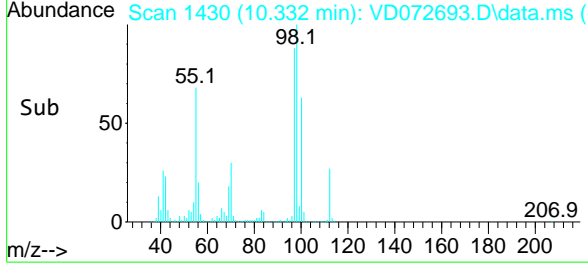
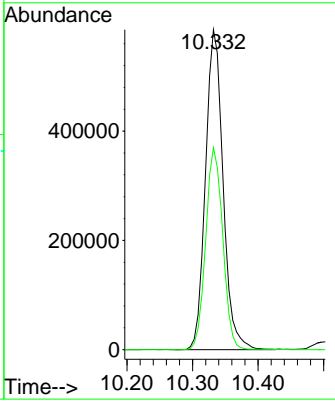
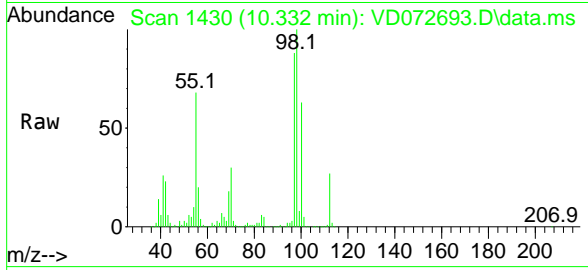




#50
 Toluene-d8
 Concen: 47.804 ug/l
 RT: 10.332 min Scan# 1430
 Delta R.T. -0.006 min
 Lab File: VD072693.D
 Acq: 22 Apr 2022 14:45

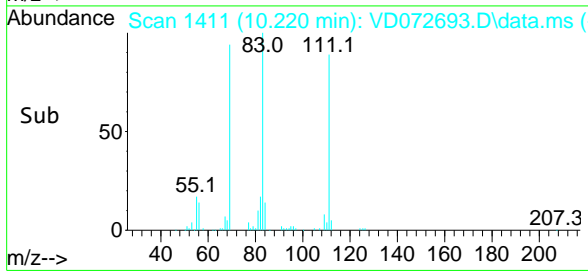
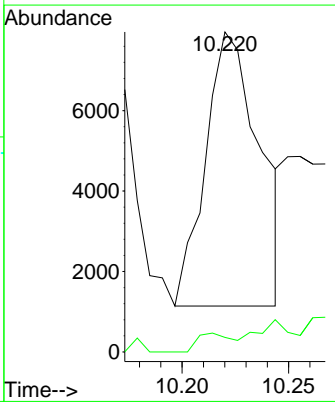
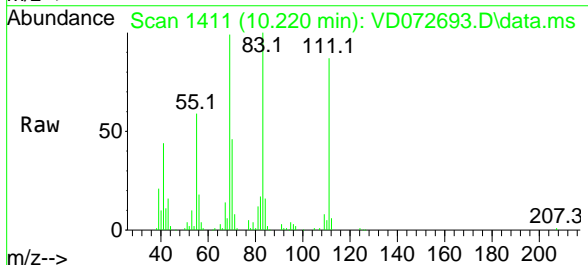
Instrument : MSVOA_D
 ClientSampleId : WC-16-1A-4-GR

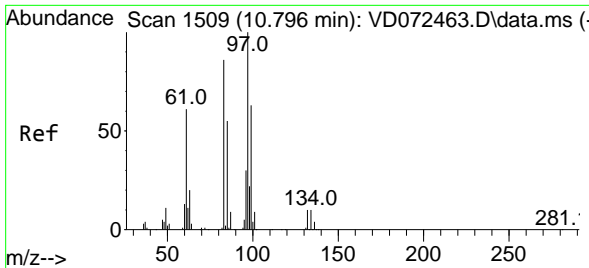
Tgt Ion: 98 Resp: 1091447
 Ion Ratio Lower Upper
 98 100
 100 61.2 52.4 78.6



#51
 4-Methyl-2-Pentanone
 Concen: 3.349 ug/l
 RT: 10.220 min Scan# 1411
 Delta R.T. 0.000 min
 Lab File: VD072693.D
 Acq: 22 Apr 2022 14:45

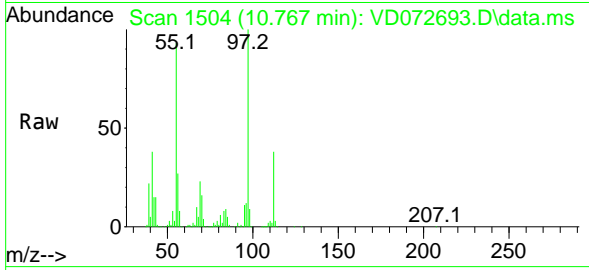
Tgt Ion: 43 Resp: 11995
 Ion Ratio Lower Upper
 43 100
 58 4.5 28.6 43.0#





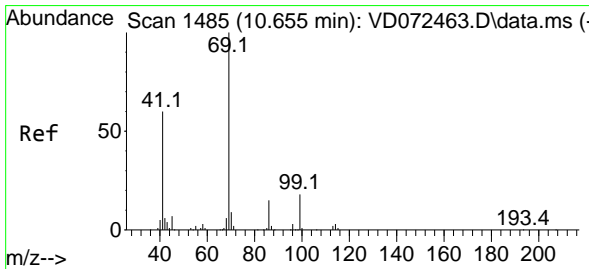
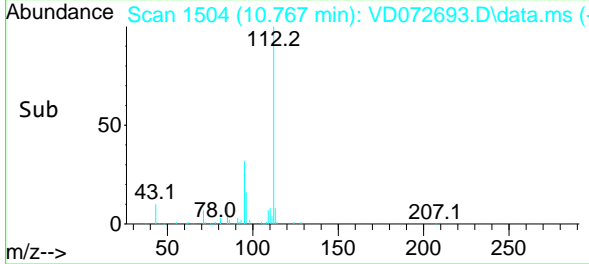
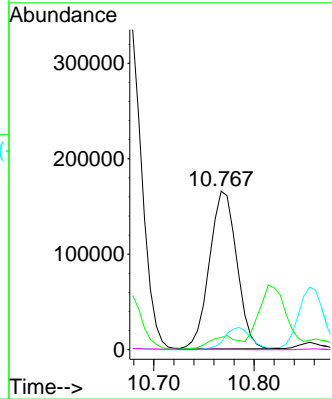
#55
 1,1,2-Trichloroethane
 Concen: 61.624 ug/l
 RT: 10.767 min Scan# 1504
 Delta R.T. -0.029 min
 Lab File: VD072693.D
 Acq: 22 Apr 2022 14:45

Instrument : MSVOA_D
 ClientSampleId : WC-16-1A-4-GR



Tgt Ion: 97 Resp: 312774

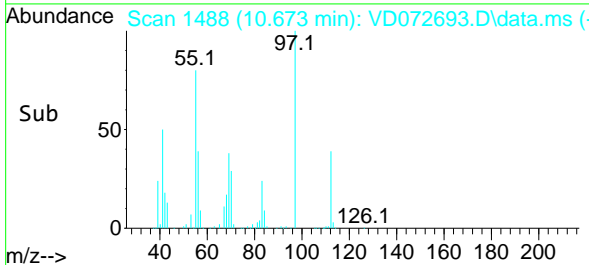
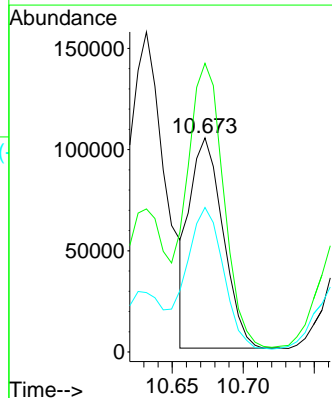
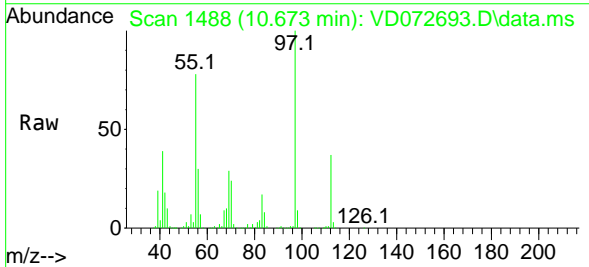
Ion	Ratio	Lower	Upper
97	100		
83	7.3	69.0	103.4#
85	4.6	42.6	63.8#
99	0.2	51.7	77.5#

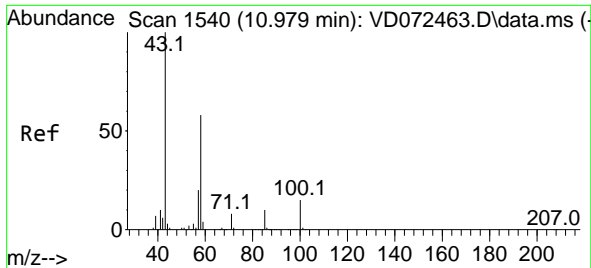


#56
 Ethyl methacrylate
 Concen: 27.436 ug/l
 RT: 10.673 min Scan# 1488
 Delta R.T. 0.018 min
 Lab File: VD072693.D
 Acq: 22 Apr 2022 14:45

Tgt Ion: 69 Resp: 167784

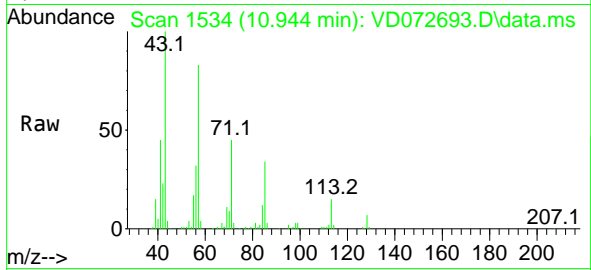
Ion	Ratio	Lower	Upper
69	100		
41	148.8	63.0	94.6#
39	77.8	33.8	50.8#



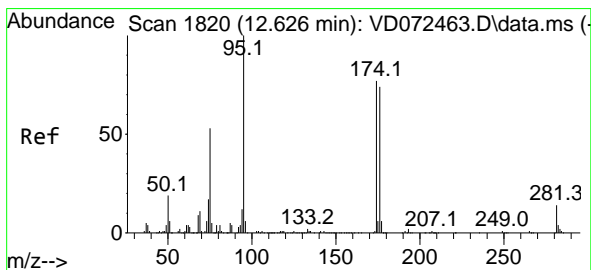
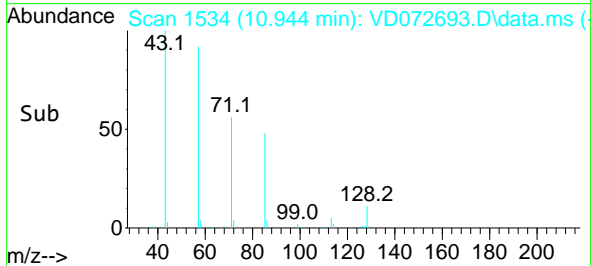
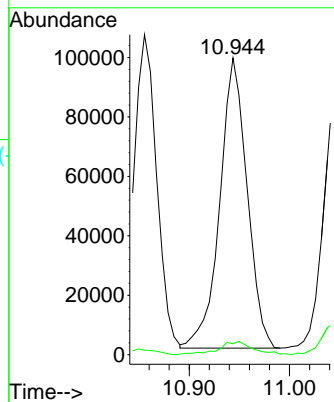


#59
 2-Hexanone
 Concen: 75.789 ug/l
 RT: 10.944 min Scan# 11
 Delta R.T. -0.035 min
 Lab File: VD072693.D
 Acq: 22 Apr 2022 14:45

Instrument :
 MSVOA_D
 ClientSampleId :
 WC-16-1A-4-GR

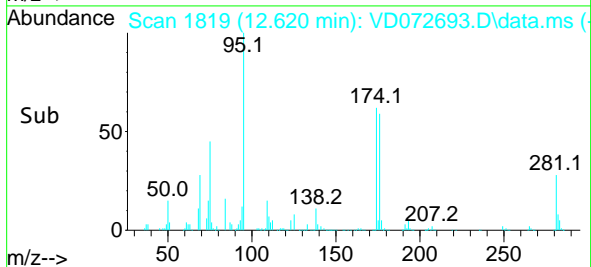
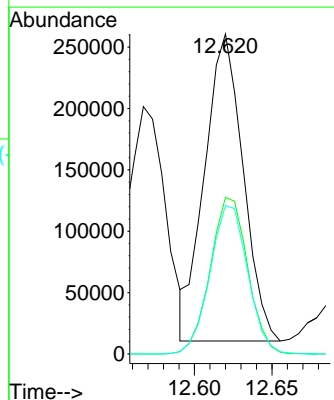
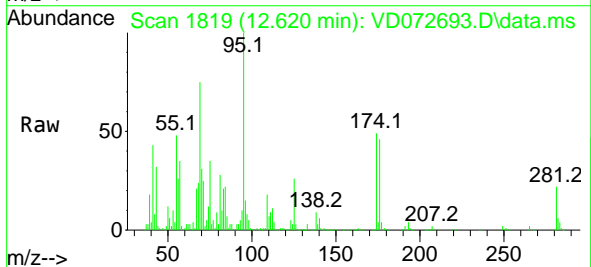


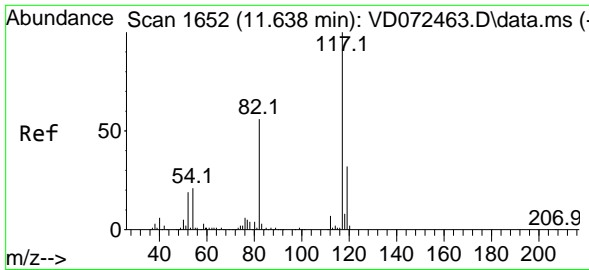
Tgt Ion: 43 Resp: 184618
 Ion Ratio Lower Upper
 43 100
 58 5.7 25.3 75.9#



#62
 4-Bromofluorobenzene
 Concen: 48.295 ug/l
 RT: 12.620 min Scan# 1819
 Delta R.T. -0.006 min
 Lab File: VD072693.D
 Acq: 22 Apr 2022 14:45

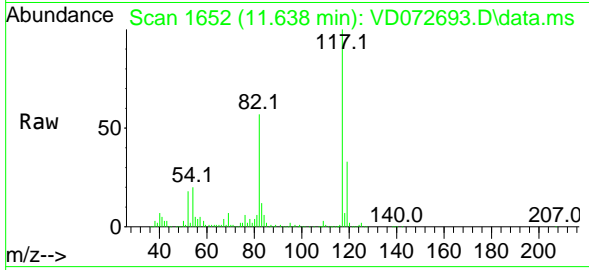
Tgt Ion: 95 Resp: 430640
 Ion Ratio Lower Upper
 95 100
 174 49.8 0.0 152.8
 176 47.7 0.0 145.4



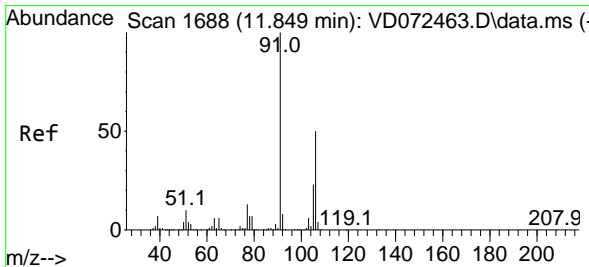
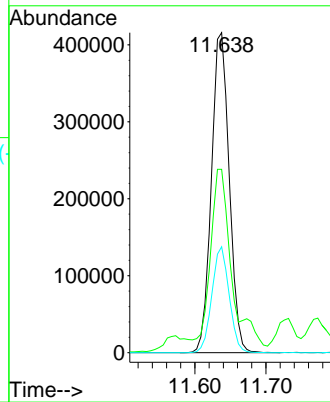
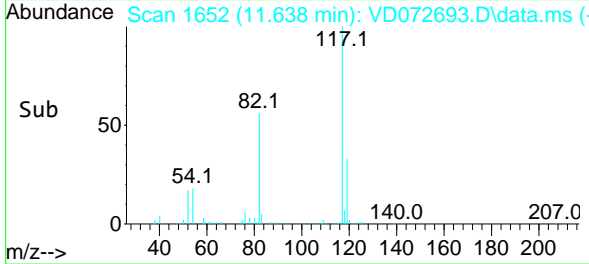


#63
 Chlorobenzene-d5
 Concen: 50.000 ug/l
 RT: 11.638 min Scan# 1652
 Delta R.T. 0.000 min
 Lab File: VD072693.D
 Acq: 22 Apr 2022 14:45

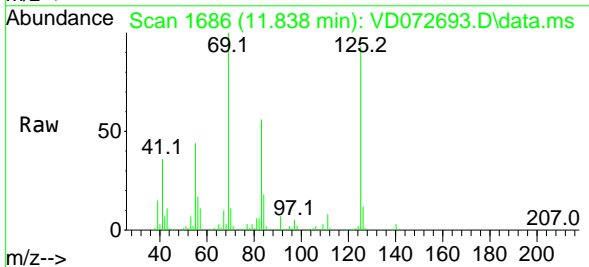
Instrument : MSVOA_D
 ClientSampleId : WC-16-1A-4-GR



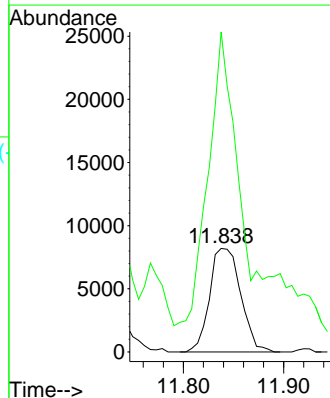
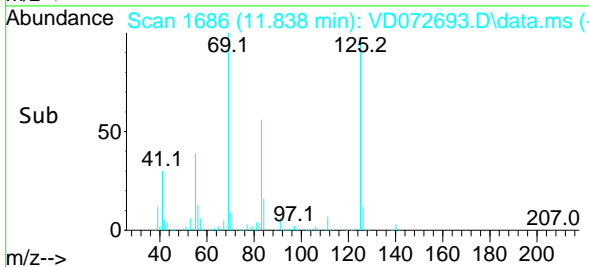
Tgt Ion:117 Resp: 723806
 Ion Ratio Lower Upper
 117 100
 82 53.1 45.3 67.9
 119 33.1 26.6 40.0

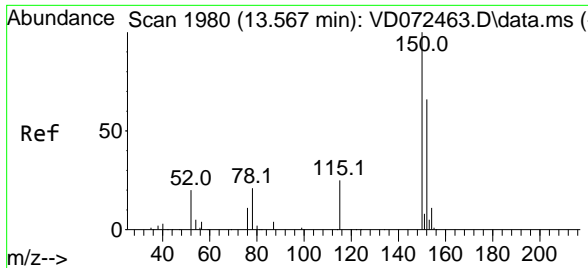


#68
 m/p-Xylenes
 Concen: 1.645 ug/l
 RT: 11.838 min Scan# 1686
 Delta R.T. -0.012 min
 Lab File: VD072693.D
 Acq: 22 Apr 2022 14:45



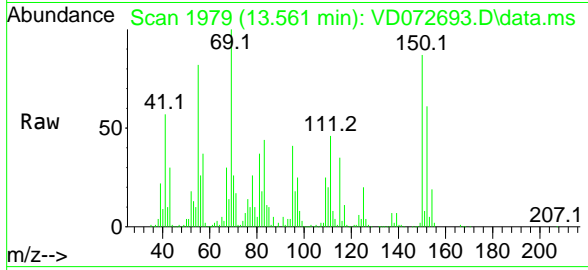
Tgt Ion:106 Resp: 17624
 Ion Ratio Lower Upper
 106 100
 91 263.1 163.7 245.5#



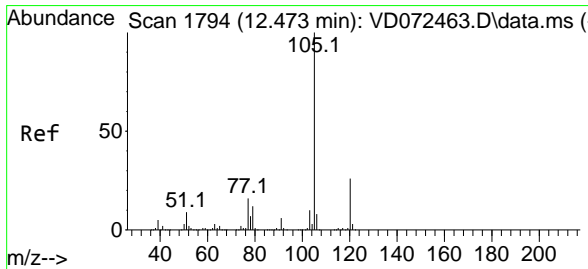
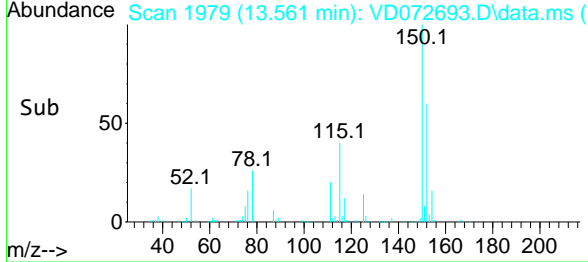
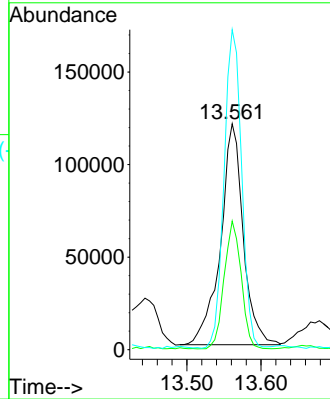


#72
 1,4-Dichlorobenzene-d4
 Concen: 50.000 ug/l
 RT: 13.561 min Scan# 1979
 Delta R.T. -0.006 min
 Lab File: VD072693.D
 Acq: 22 Apr 2022 14:45

Instrument : MSVOA_D
 ClientSampleId : WC-16-1A-4-GR

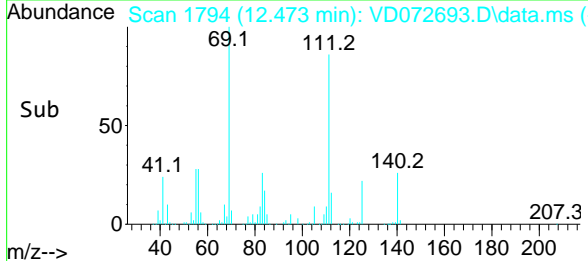
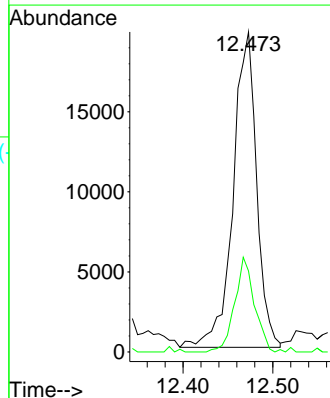
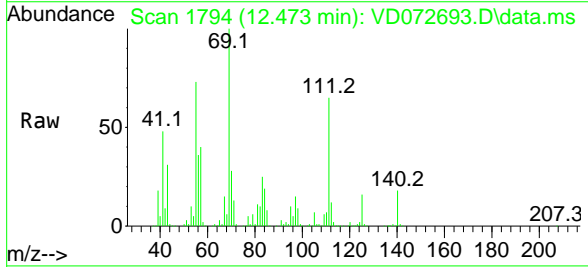


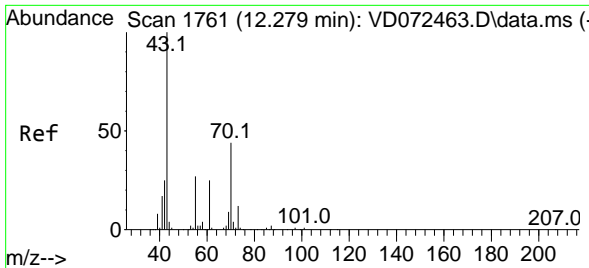
Tgt Ion:152 Resp: 254337
 Ion Ratio Lower Upper
 152 100
 115 43.4 31.3 93.8
 150 111.4 0.0 348.6



#73
 Isopropylbenzene
 Concen: 1.745 ug/l
 RT: 12.473 min Scan# 1794
 Delta R.T. 0.000 min
 Lab File: VD072693.D
 Acq: 22 Apr 2022 14:45

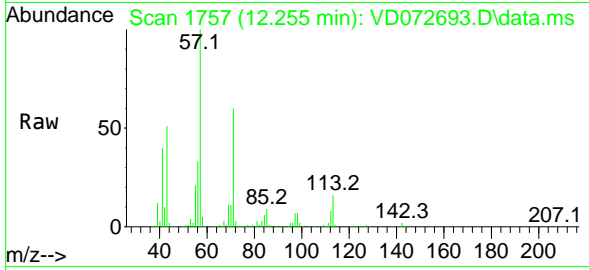
Tgt Ion:105 Resp: 35847
 Ion Ratio Lower Upper
 105 100
 120 25.1 13.0 38.9





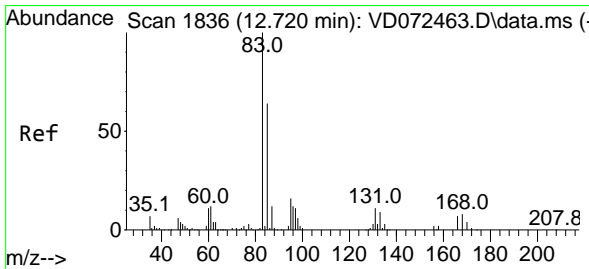
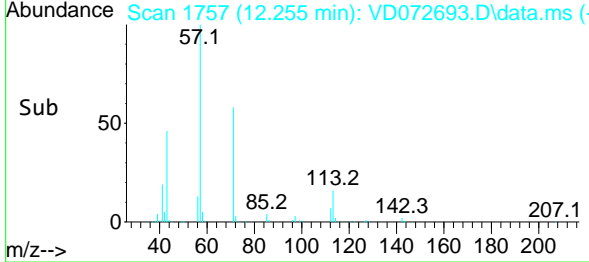
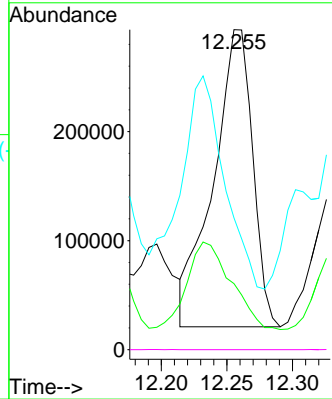
#74
 N-amy1 acetate
 Concen: 132.259 ug/l
 RT: 12.255 min Scan# 11
 Delta R.T. -0.023 min
 Lab File: VD072693.D
 Acq: 22 Apr 2022 14:45

Instrument : MSVOA_D
ClientSampleId : WC-16-1A-4-GR



Tgt Ion: 43 Resp: 570010

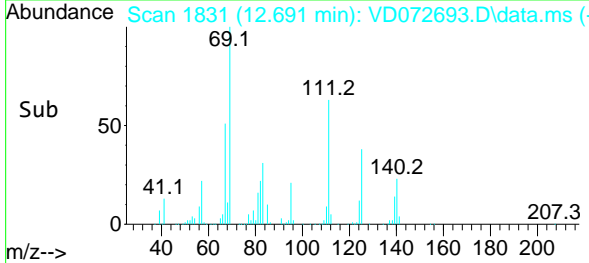
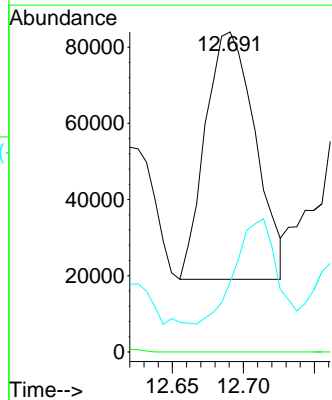
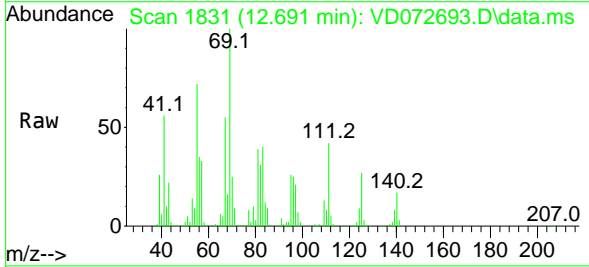
Ion	Ratio	Lower	Upper
43	100		
70	0.0	31.3	46.9#
55	0.0	20.0	30.0#
61	0.0	17.8	26.8#

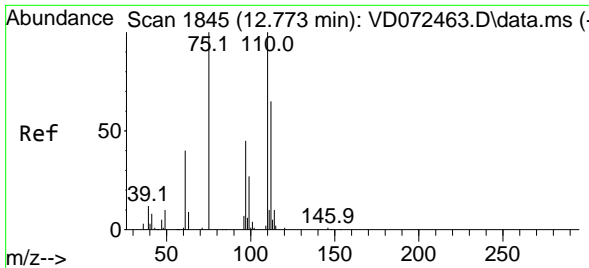


#75
 1,1,2,2-Tetrachloroethane
 Concen: 40.758 ug/l
 RT: 12.691 min Scan# 1831
 Delta R.T. -0.029 min
 Lab File: VD072693.D
 Acq: 22 Apr 2022 14:45

Tgt Ion: 83 Resp: 158573

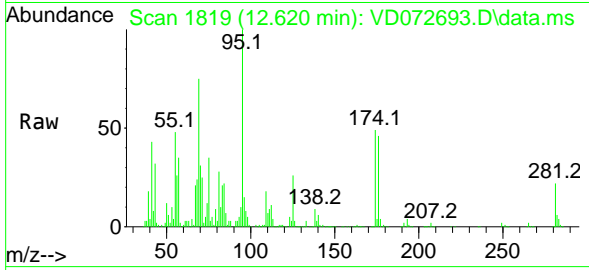
Ion	Ratio	Lower	Upper
83	100		
131	0.0	5.0	14.9#
85	0.0	32.6	98.0#



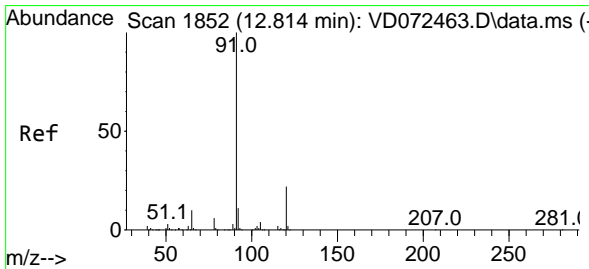
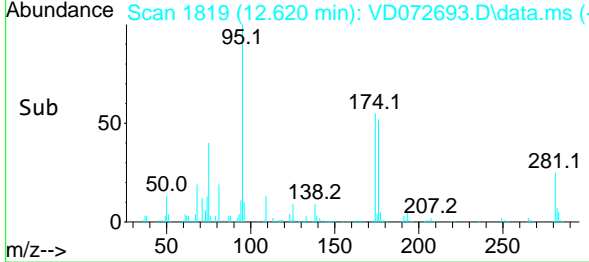
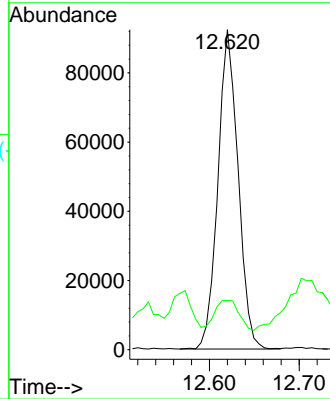


#76
 1,2,3-Trichloropropane
 Concen: 51.921 ug/l
 RT: 12.620 min Scan# 1819
 Delta R.T. -0.153 min
 Lab File: VD072693.D
 Acq: 22 Apr 2022 14:45

Instrument : MSVOA_D
 ClientSampleId : WC-16-1A-4-GR

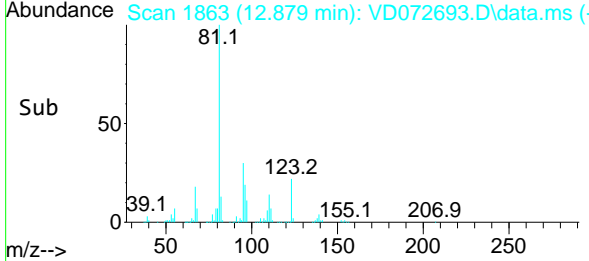
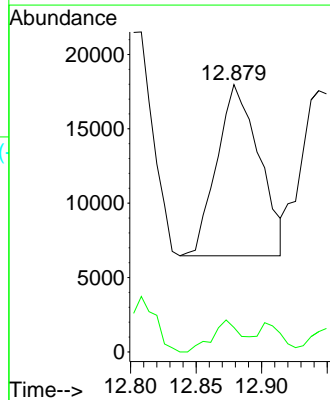
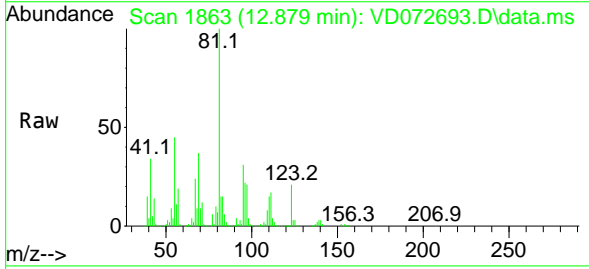


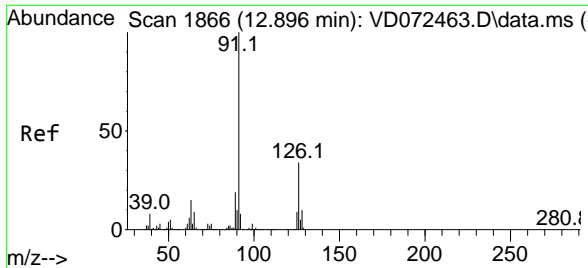
Tgt Ion: 75 Resp: 144028
 Ion Ratio Lower Upper
 75 100
 77 11.2 0.0 0.0#



#78
 n-propylbenzene
 Concen: 1.047 ug/l
 RT: 12.879 min Scan# 1863
 Delta R.T. 0.065 min
 Lab File: VD072693.D
 Acq: 22 Apr 2022 14:45

Tgt Ion: 91 Resp: 25955
 Ion Ratio Lower Upper
 91 100
 120 12.6 10.9 32.9

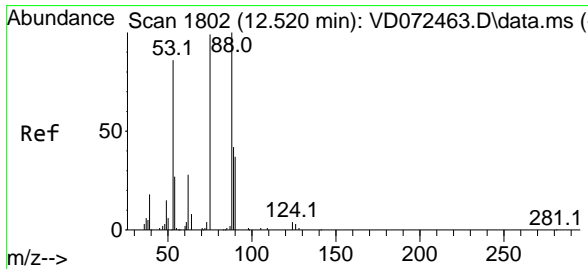
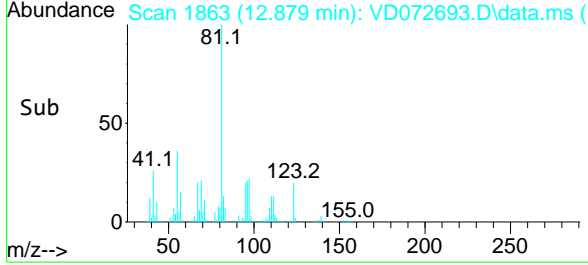
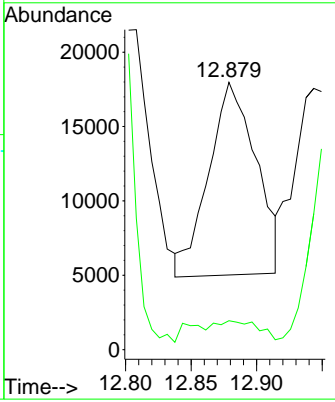
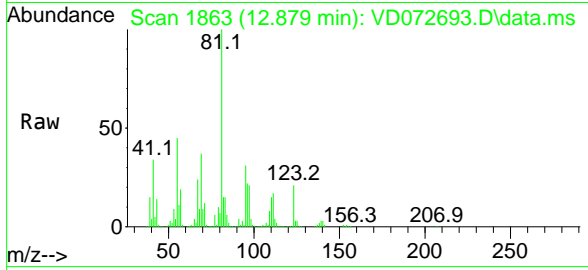




#79
 2-Chlorotoluene
 Concen: 2.252 ug/l
 RT: 12.879 min Scan# 1863
 Delta R.T. -0.018 min
 Lab File: VD072693.D
 Acq: 22 Apr 2022 14:45

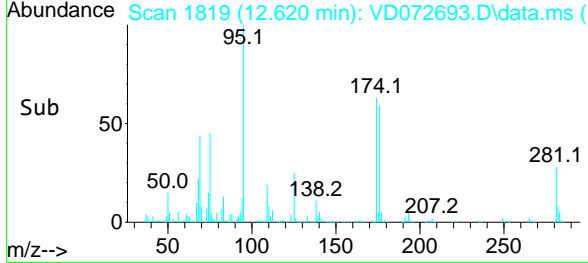
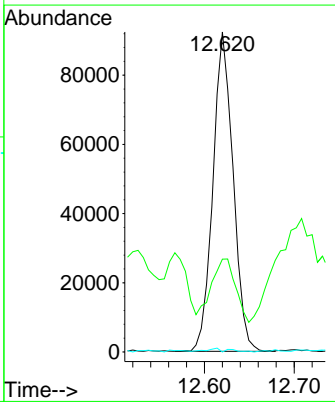
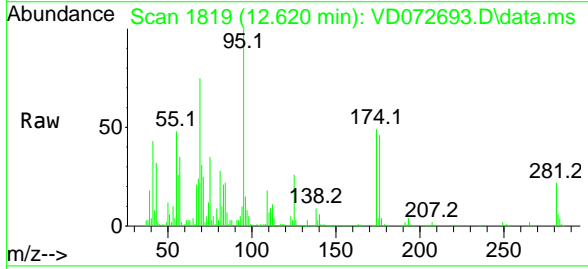
Instrument : MSVOA_D
 ClientSampleId : WC-16-1A-4-GR

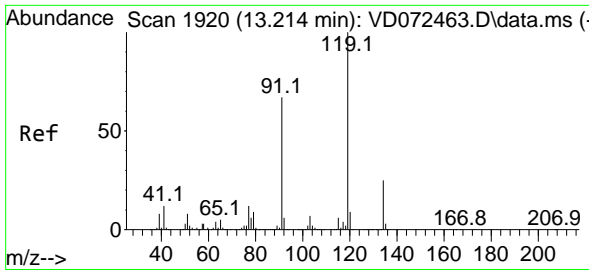
Tgt Ion: 91 Resp: 32635
 Ion Ratio Lower Upper
 91 100
 126 0.0 16.2 48.6#



#81
 trans-1,4-Dichloro-2-butene
 Concen: 127.405 ug/l
 RT: 12.620 min Scan# 1819
 Delta R.T. 0.100 min
 Lab File: VD072693.D
 Acq: 22 Apr 2022 14:45

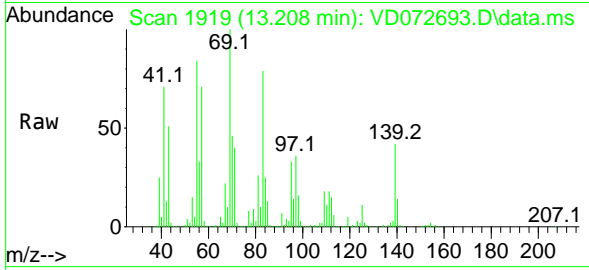
Tgt Ion: 75 Resp: 144028
 Ion Ratio Lower Upper
 75 100
 53 23.8 86.5 129.7#
 89 0.5 33.9 50.9#



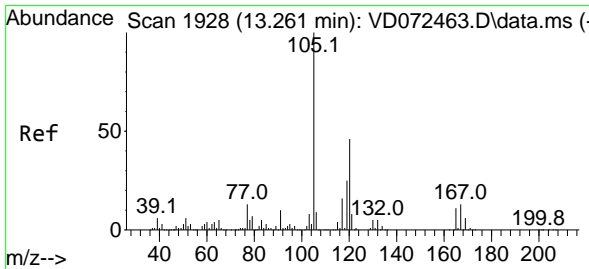
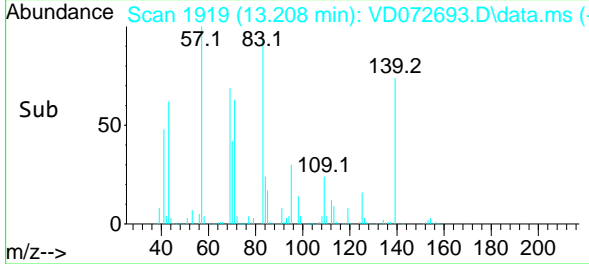
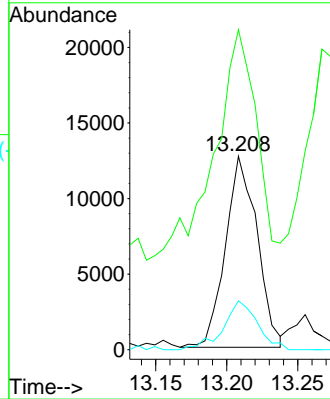


#83
 tert-Butylbenzene
 Concen: 1.288 ug/l
 RT: 13.208 min Scan# 1919
 Delta R.T. -0.006 min
 Lab File: VD072693.D
 Acq: 22 Apr 2022 14:45

Instrument : MSVOA_D
 ClientSampleId : WC-16-1A-4-GR

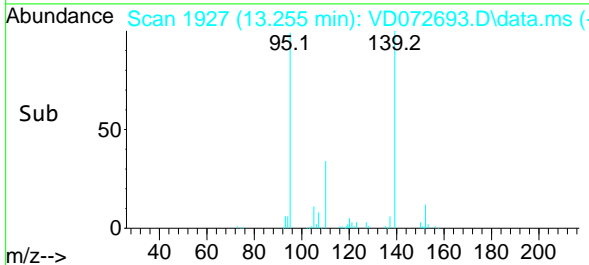
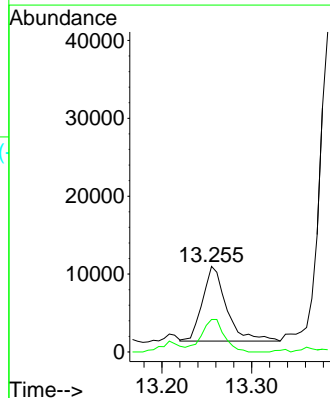
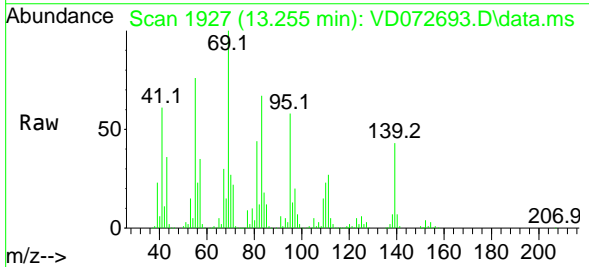


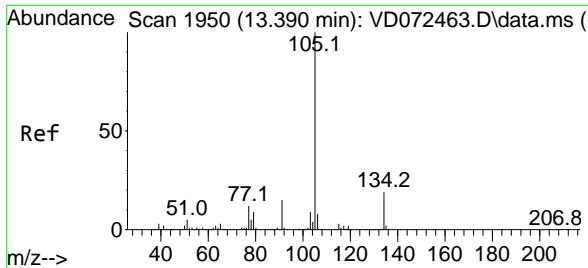
Tgt Ion:119 Resp: 19623
 Ion Ratio Lower Upper
 119 100
 91 161.1 34.8 104.5#
 134 27.3 13.3 39.9



#84
 1,2,4-Trimethylbenzene
 Concen: 1.030 ug/l
 RT: 13.255 min Scan# 1927
 Delta R.T. -0.006 min
 Lab File: VD072693.D
 Acq: 22 Apr 2022 14:45

Tgt Ion:105 Resp: 17720
 Ion Ratio Lower Upper
 105 100
 120 41.7 22.3 66.8

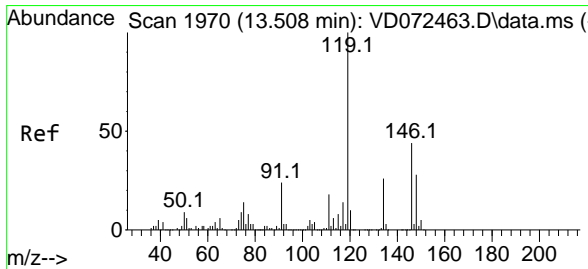
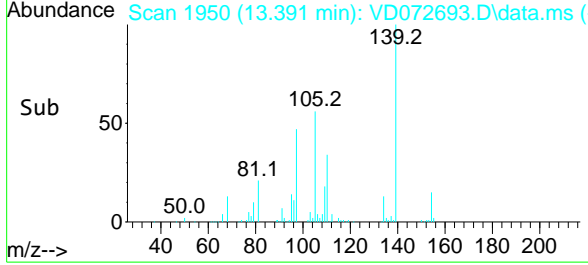
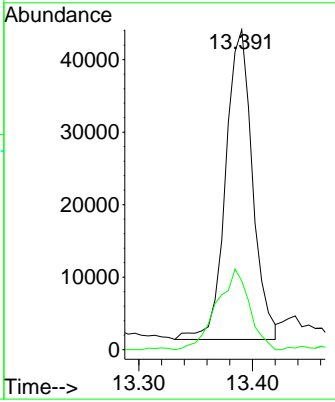
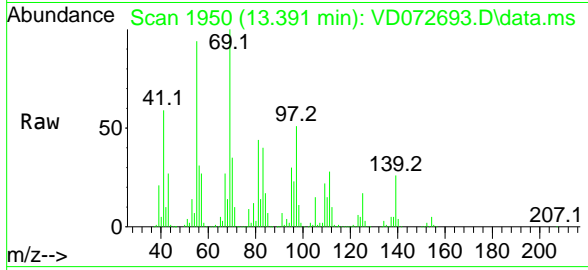




#85
 sec-Butylbenzene
 Concen: 3.059 ug/l
 RT: 13.391 min Scan# 1950
 Delta R.T. 0.000 min
 Lab File: VD072693.D
 Acq: 22 Apr 2022 14:45

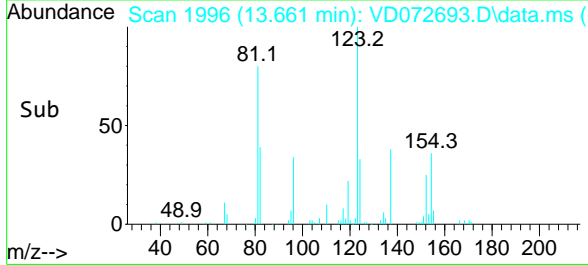
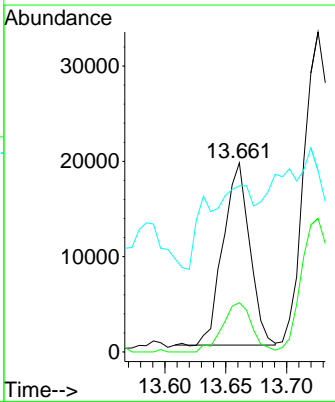
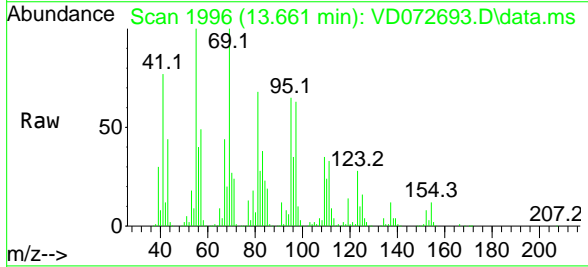
Instrument : MSVOA_D
 ClientSampleId : WC-16-1A-4-GR

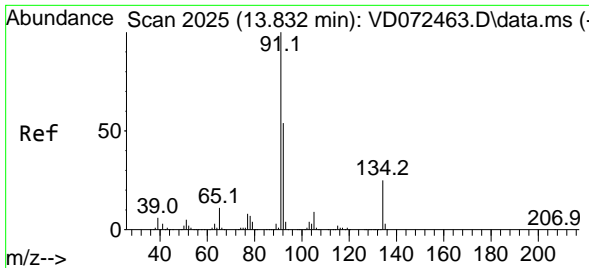
Tgt Ion:105 Resp: 70171
 Ion Ratio Lower Upper
 105 100
 134 31.5 9.8 29.3#



#86
 p-Isopropyltoluene
 Concen: 1.551 ug/l
 RT: 13.661 min Scan# 1996
 Delta R.T. 0.153 min
 Lab File: VD072693.D
 Acq: 22 Apr 2022 14:45

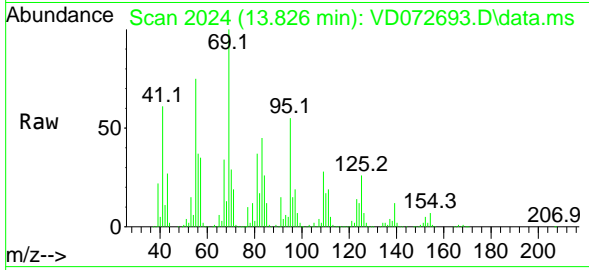
Tgt Ion:119 Resp: 29090
 Ion Ratio Lower Upper
 119 100
 134 29.8 12.9 38.6
 91 24.4 12.1 36.3





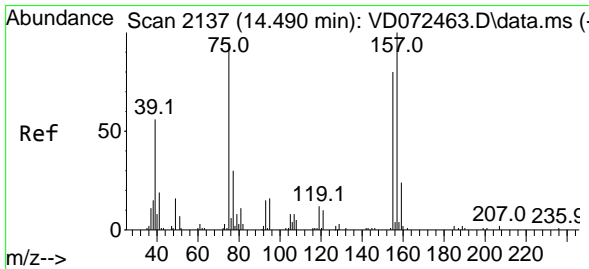
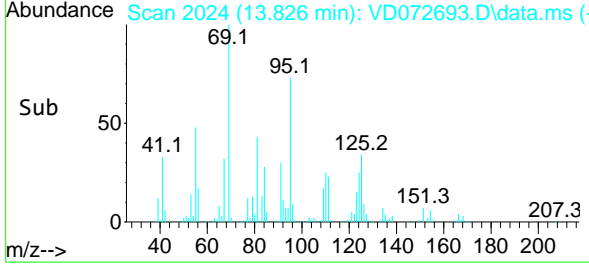
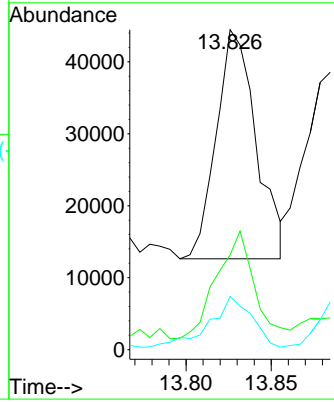
#89
 n-Butylbenzene
 Concen: 2.904 ug/l
 RT: 13.826 min Scan# 2025
 Delta R.T. -0.006 min
 Lab File: VD072693.D
 Acq: 22 Apr 2022 14:45

Instrument : MSVOA_D
 ClientSampleId : WC-16-1A-4-GR



Tgt Ion: 91 Resp: 51871

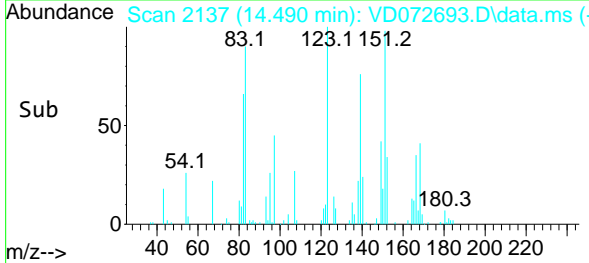
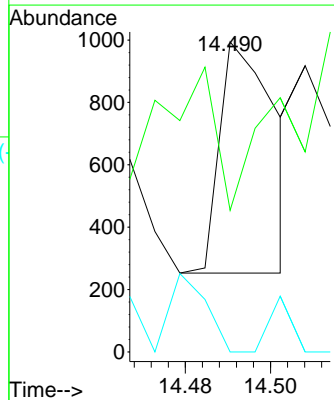
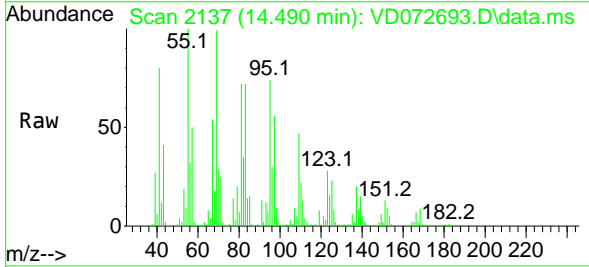
Ion	Ratio	Lower	Upper
91	100		
92	44.2	26.6	79.8
134	23.3	12.3	36.9

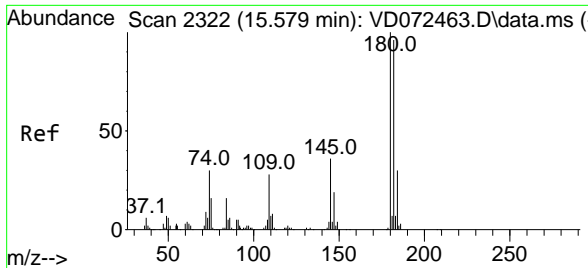


#92
 1,2-Dibromo-3-Chloropropane
 Concen: 1.164 ug/l
 RT: 14.490 min Scan# 2137
 Delta R.T. 0.000 min
 Lab File: VD072693.D
 Acq: 22 Apr 2022 14:45

Tgt Ion: 75 Resp: 670

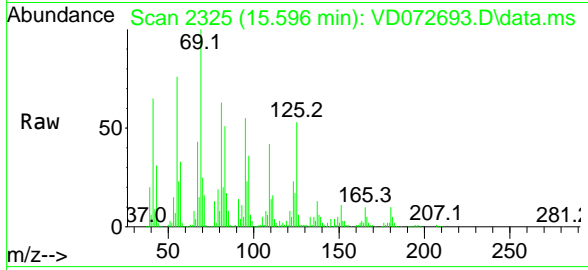
Ion	Ratio	Lower	Upper
75	100		
155	57.9	36.8	110.3
157	22.1	48.4	145.0#





#96
 1,2,3-Trichlorobenzene
 Concen: 4.119 ug/l
 RT: 15.596 min Scan# 21
 Delta R.T. 0.018 min
 Lab File: VD072693.D
 Acq: 22 Apr 2022 14:45

Instrument :
 MSVOA_D
 ClientSampleId :
 WC-16-1A-4-GR



Tgt Ion:180 Resp: 18748

Ion	Ratio	Lower	Upper
180	100		
182	0.0	47.6	142.9#
145	0.0	17.1	51.3#

