

Data Path : Z:\voasrv\HPCHEM1\MSVOA\_D\Data\VD042723\  
 Data File : VD075862.D  
 Acq On : 27 Apr 2023 15:38  
 Operator : KP/SY  
 Sample : 02447-19REMSD  
 Misc : 4.60G/10.00ml/MSVOA\_D/SOIL  
 ALS Vial : 10 Sample Multiplier: 1

Instrument :  
 MSVOA\_D  
 ClientSampleId :  
 EW937MSD

Quant Time: Apr 28 02:58:12 2023  
 Quant Method : Z:\voasrv\HPCHEM1\MSVOA\_D\Method\SFAMDLM042023SMA.M  
 Quant Title : SFAM01.0  
 QLast Update : Thu Apr 27 02:02:18 2023  
 Response via : Initial Calibration

Compound	R.T.	QIon	Response	Conc	Units	Dev(Min)
Internal Standards						
1) 1,4-Difluorobenzene	8.775	114	358134	25.000	ug/L	0.00
28) Chlorobenzene-d5	11.581	117	281096	25.000	ug/L	0.00
58) 1,4-Dichlorobenzene-d4	13.516	152	94502	25.000	ug/L	0.00
System Monitoring Compounds						
4) Vinyl Chloride-d3	2.270	65	205967	26.216	ug/L	0.00
Spiked Amount	25.000	Range 30 - 150	Recovery	=	104.880%	
7) Chloroethane-d5	2.799	69	176641	26.022	ug/L	0.00
Spiked Amount	25.000	Range 30 - 150	Recovery	=	104.080%	
11) 1,1-Dichloroethene-d2	3.917	65	44597	24.622	ug/L	0.00
Spiked Amount	25.000	Range 45 - 110	Recovery	=	98.480%	
21) 2-Butanone-d5	6.981	46	32626	47.836	ug/L	0.00
Spiked Amount	50.000	Range 20 - 135	Recovery	=	95.680%	
24) Chloroform-d	7.569	84	228152	25.476	ug/L	0.00
Spiked Amount	25.000	Range 40 - 150	Recovery	=	101.920%	
26) 1,2-Dichloroethane-d4	8.234	65	95562	24.987	ug/L	0.00
Spiked Amount	25.000	Range 70 - 130	Recovery	=	99.960%	
32) Benzene-d6	8.199	84	476462	29.082	ug/L	0.00
Spiked Amount	25.000	Range 20 - 135	Recovery	=	116.320%	
36) 1,2-Dichloropropane-d6	9.210	67	133786	29.502	ug/L	0.00
Spiked Amount	25.000	Range 70 - 120	Recovery	=	118.000%	
41) Toluene-d8	10.269	98	417647	27.229	ug/L	0.00
Spiked Amount	25.000	Range 30 - 130	Recovery	=	108.920%	
43) trans-1,3-Dichloroprop...	10.528	79	48361	25.801	ug/L	0.00
Spiked Amount	25.000	Range 30 - 135	Recovery	=	103.200%	
47) 2-Hexanone-d5	10.881	63	29340	53.734	ug/L	0.00
Spiked Amount	50.000	Range 20 - 135	Recovery	=	107.460%	
56) 1,1,2,2-Tetrachloroeth...	12.651	84	88465	25.493	ug/L	0.00
Spiked Amount	25.000	Range 45 - 120	Recovery	=	101.960%	
66) 1,2-Dichlorobenzene-d4	13.816	152	77808	23.277	ug/L	0.00
Spiked Amount	25.000	Range 75 - 120	Recovery	=	93.120%	
Target Compounds						
2) Dichlorodifluoromethane	1.934	85	137811	27.913	ug/L	99
3) Chloromethane	2.146	50	203425	29.557	ug/L	99
5) Vinyl chloride	2.281	62	240283	26.713	ug/L	99
6) Bromomethane	2.693	94	133977	22.166	ug/L	99
8) Chloroethane	2.834	64	153856	26.447	ug/L	97
9) Trichlorofluoromethane	3.175	101	183859	25.439	ug/L	99
10) 1,1,2-Trichloro-1,2,2-...	3.964	101	121059	24.932	ug/L	98
12) 1,1-Dichloroethene	3.940	96	118626	25.192	ug/L	87
13) Acetone	4.022	43	31821	54.518	ug/L	62
14) Carbon disulfide	4.270	76	377290	22.939	ug/L	99
15) Methyl Acetate	4.564	43	27667	21.872	ug/L #	49
16) Methylene chloride	4.799	84	148305	20.413	ug/L	97
17) trans-1,2-Dichloroethene	5.311	96	125081	23.689	ug/L	98
18) Methyl tert-butyl Ether	5.322	73	210655	24.872	ug/L	99
19) 1,1-Dichloroethane	6.111	63	202152	26.134	ug/L	99
20) cis-1,2-Dichloroethene	7.081	96	132254	23.688	ug/L	93
22) 2-Butanone	7.081	43	38866	51.077	ug/L	94
23) Bromochloromethane	7.428	128	63497	24.523	ug/L #	92
25) Chloroform	7.593	83	217655	25.107	ug/L	100

Data Path : Z:\voasrv\HPCHEM1\MSVOA\_D\Data\VD042723\  
 Data File : VD075862.D  
 Acq On : 27 Apr 2023 15:38  
 Operator : KP/SY  
 Sample : 02447-19REMSD  
 Misc : 4.60G/10.00ml/MSVOA\_D/SOIL  
 ALS Vial : 10 Sample Multiplier: 1

Instrument :  
 MSVOA\_D  
 ClientSampleId :  
 EW937MSD

Quant Time: Apr 28 02:58:12 2023  
 Quant Method : Z:\voasrv\HPCHEM1\MSVOA\_D\Method\SFAMDLM042023SMA.M  
 Quant Title : SFAM01.0  
 QLast Update : Thu Apr 27 02:02:18 2023  
 Response via : Initial Calibration

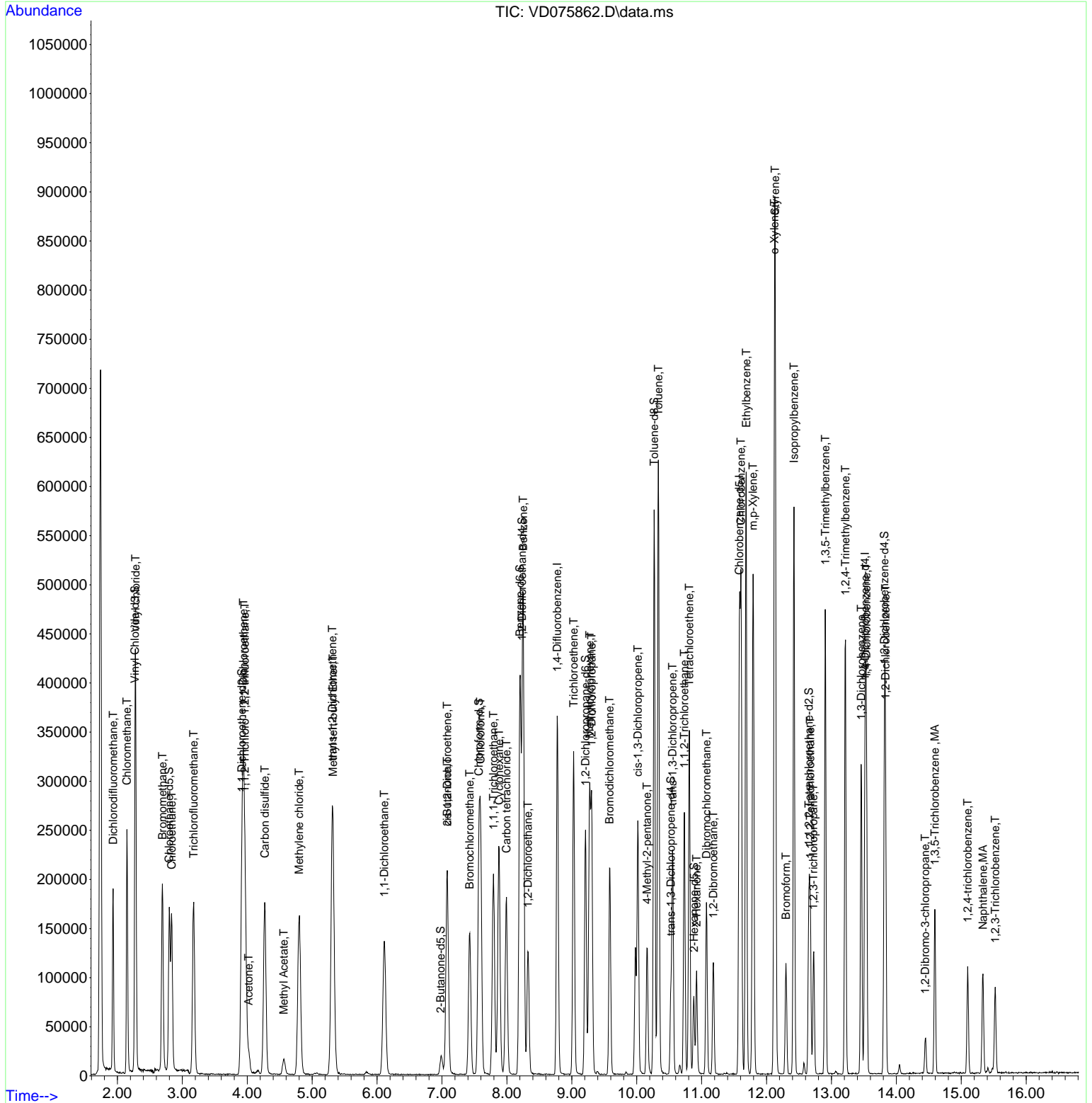
Compound	R.T.	QIon	Response	Conc	Units	Dev(Min)
27) 1,2-Dichloroethane	8.322	62	113329	25.326	ug/L	98
29) Cyclohexane	7.881	56	120148	24.968	ug/L	97
30) 1,1,1-Trichloroethane	7.793	97	172528	29.009	ug/L	99
31) Carbon tetrachloride	7.993	117	135877	28.477	ug/L	96
33) Benzene	8.252	78	498089	29.294	ug/L	100
34) Trichloroethene	9.028	95	115958	26.371	ug/L	96
35) Methylcyclohexane	9.275	83	125829	18.561	ug/L	97
37) 1,2-Dichloropropane	9.305	63	116251	29.764	ug/L	99
38) Bromodichloromethane	9.581	83	150594	28.596	ug/L	97
39) cis-1,3-Dichloropropene	10.016	75	169301	27.256	ug/L	99
40) 4-Methyl-2-pentanone	10.157	43	81265	57.067	ug/L	98
42) Toluene	10.334	91	515624	28.023	ug/L	96
44) trans-1,3-Dichloropropene	10.552	75	136147	27.284	ug/L	97
45) 1,1,2-Trichloroethane	10.734	97	91796	27.626	ug/L	97
46) Tetrachloroethene	10.810	164	83392	23.122	ug/L	96
48) 2-Hexanone	10.922	43	56696	56.475	ug/L	94
49) Dibromochloromethane	11.075	129	94931	26.243	ug/L	97
50) 1,2-Dibromoethane	11.181	107	79061	26.391	ug/L	97
51) Chlorobenzene	11.604	112	292089	24.265	ug/L	97
52) Ethylbenzene	11.687	91	457720	24.259	ug/L	98
53) m,p-Xylene	11.793	106	182854	24.338	ug/L	99
54) o-Xylene	12.122	106	175228	24.555	ug/L	96
55) Styrene	12.134	104	298492	24.033	ug/L	99
57) 1,1,2,2-Tetrachloroethane	12.675	83	85655	25.335	ug/L	97
59) Bromoform	12.299	173	51479	35.543	ug/L	99
60) Isopropylbenzene	12.422	105	383664	30.618	ug/L	100
61) 1,2,3-Trichloropropane	12.722	75	55929	37.675	ug/L	99
62) 1,3,5-Trimethylbenzene	12.904	105	260256	27.853	ug/L	99
63) 1,2,4-Trimethylbenzene	13.216	105	249550	27.706	ug/L	99
64) 1,3-Dichlorobenzene	13.457	146	143434	23.923	ug/L	98
65) 1,4-Dichlorobenzene	13.540	146	146613	23.300	ug/L	99
67) 1,2-Dichlorobenzene	13.834	146	130738	24.418	ug/L	98
68) 1,2-Dibromo-3-chloropr...	14.445	75	9430	31.775	ug/L	98
69) 1,3,5-Trichlorobenzene	14.592	180	53074	13.207	ug/L	98
70) 1,2,4-trichlorobenzene	15.098	180	35872	10.771	ug/L	99
71) Naphthalene	15.334	128	96878	15.896	ug/L	99
72) 1,2,3-Trichlorobenzene	15.522	180	32120	10.805	ug/L	97

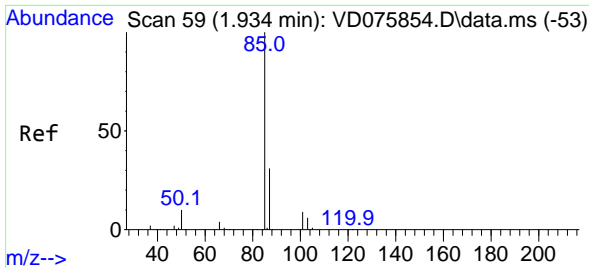
(#) = qualifier out of range (m) = manual integration (+) = signals summed

Data Path : Z:\voasrv\HPCHEM1\MSVOA\_D\Data\VD042723\  
 Data File : VD075862.D  
 Acq On : 27 Apr 2023 15:38  
 Operator : KP/SY  
 Sample : 02447-19REMSD  
 Misc : 4.60G/10.00ml/MSVOA\_D/SOIL  
 ALS Vial : 10 Sample Multiplier: 1

Instrument :  
 MSVOA\_D  
 Client Sample Id :  
 EW937MSD

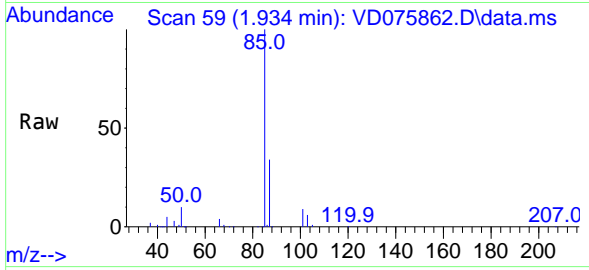
Quant Time: Apr 28 02:58:12 2023  
 Quant Method : Z:\voasrv\HPCHEM1\MSVOA\_D\Method\SFAMDL042023SMA.M  
 Quant Title : SFAM01.0  
 QLast Update : Thu Apr 27 02:02:18 2023  
 Response via : Initial Calibration



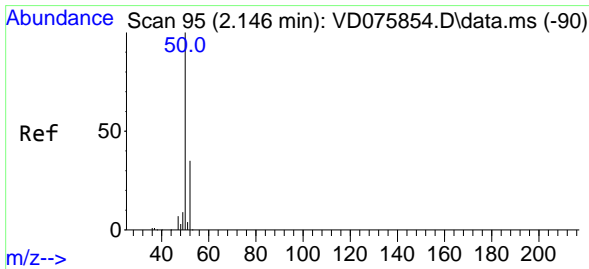
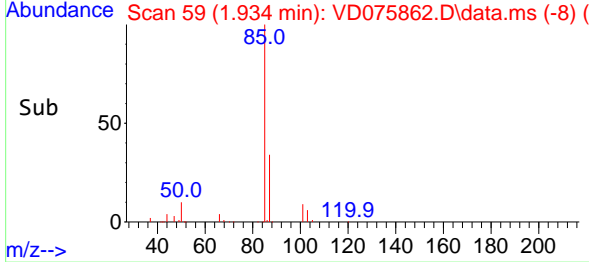
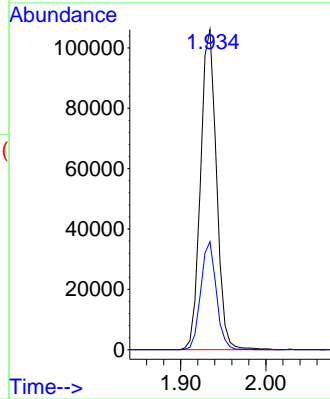


#2  
 Dichlorodifluoromethane  
 Concen: 27.913 ug/L  
 RT: 1.934 min Scan# 59  
 Delta R.T. -0.000 min  
 Lab File: VD075862.D  
 Acq: 27 Apr 2023 15:38

Instrument : MSVOA\_D  
 ClientSampleId : EW937MSD

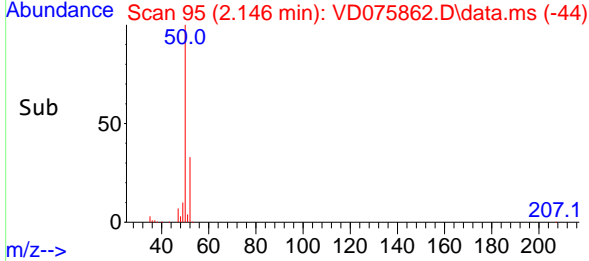
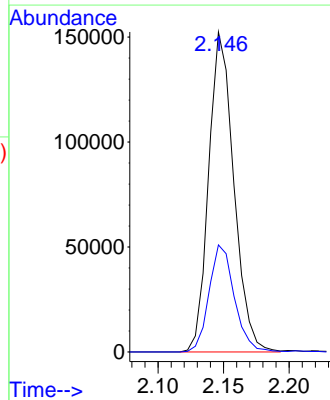
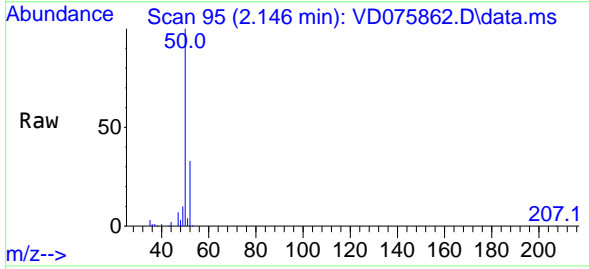


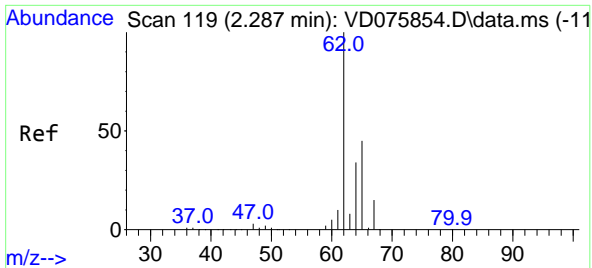
Tgt Ion: 85 Resp: 137811  
 Ion Ratio Lower Upper  
 85 100  
 87 32.8 25.8 38.8



#3  
 Chloromethane  
 Concen: 29.557 ug/L  
 RT: 2.146 min Scan# 95  
 Delta R.T. -0.000 min  
 Lab File: VD075862.D  
 Acq: 27 Apr 2023 15:38

Tgt Ion: 50 Resp: 203425  
 Ion Ratio Lower Upper  
 50 100  
 52 33.4 23.7 44.1

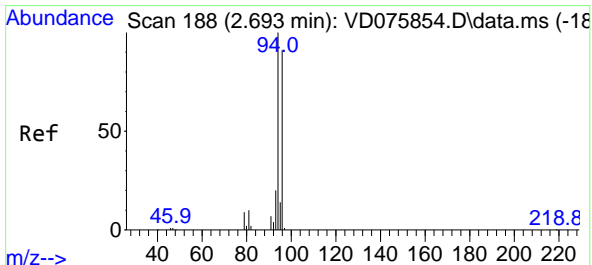
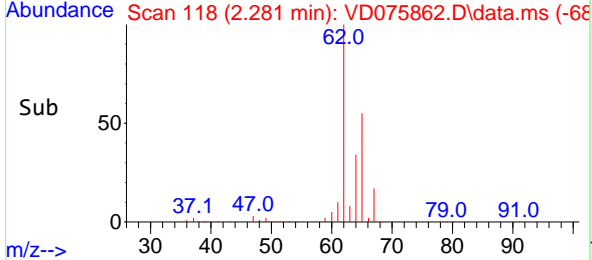
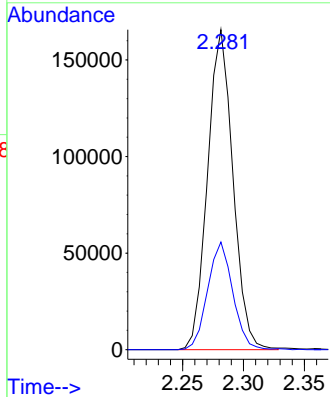
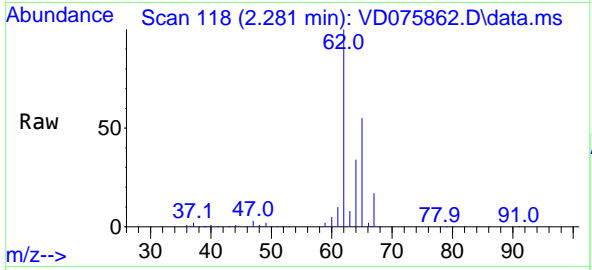




#5  
 Vinyl chloride  
 Concen: 26.713 ug/L  
 RT: 2.281 min Scan# 119  
 Delta R.T. -0.006 min  
 Lab File: VD075862.D  
 Acq: 27 Apr 2023 15:38

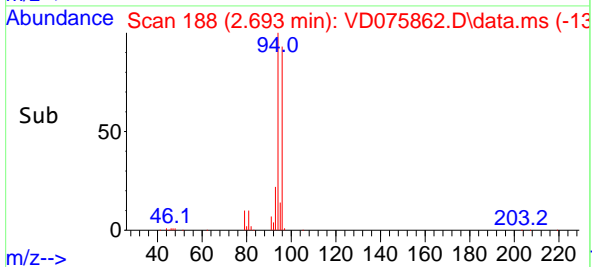
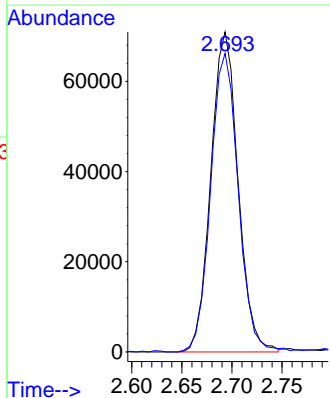
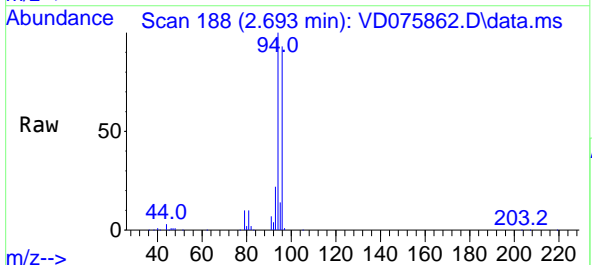
Instrument : MSVOA\_D  
 ClientSampleId : EW937MSD

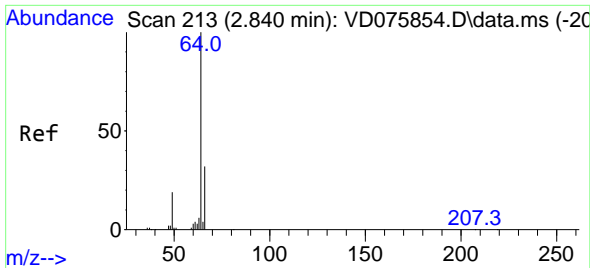
Tgt Ion: 62 Resp: 240283  
 Ion Ratio Lower Upper  
 62 100  
 64 33.7 23.2 43.0



#6  
 Bromomethane  
 Concen: 22.166 ug/L  
 RT: 2.693 min Scan# 188  
 Delta R.T. -0.006 min  
 Lab File: VD075862.D  
 Acq: 27 Apr 2023 15:38

Tgt Ion: 94 Resp: 133977  
 Ion Ratio Lower Upper  
 94 100  
 96 93.3 65.7 121.9

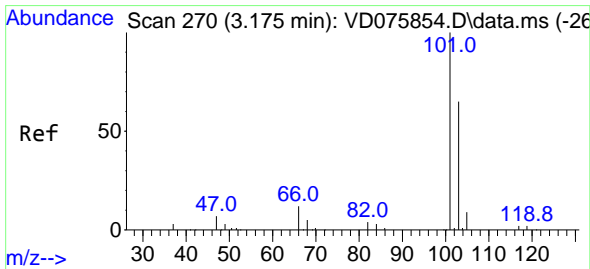
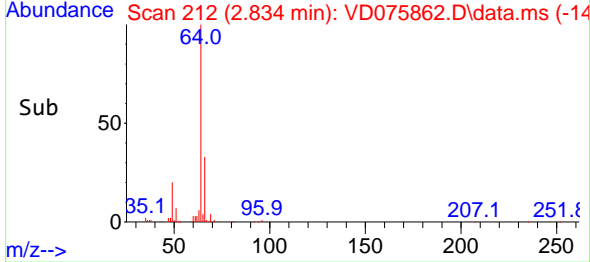
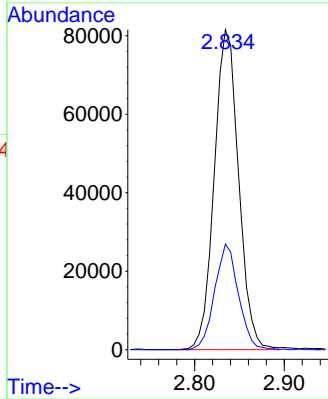
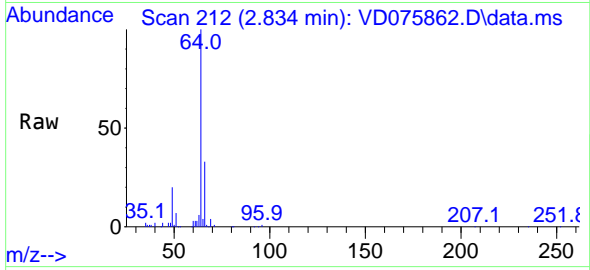




#8  
 Chloroethane  
 Concen: 26.447 ug/L  
 RT: 2.834 min Scan# 211  
 Delta R.T. -0.006 min  
 Lab File: VD075862.D  
 Acq: 27 Apr 2023 15:38

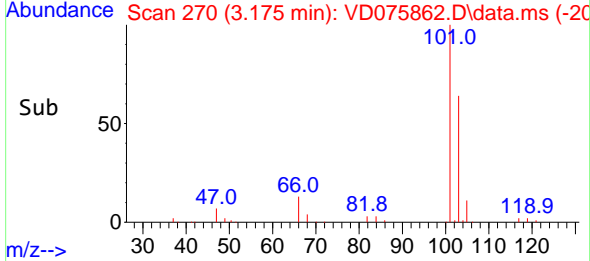
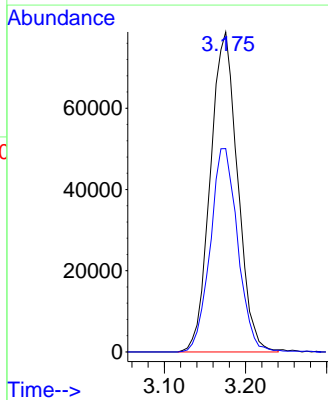
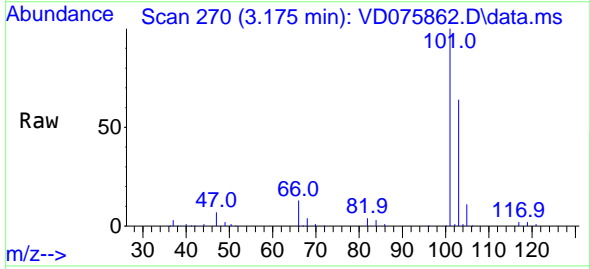
Instrument : MSVOA\_D  
 ClientSampleId : EW937MSD

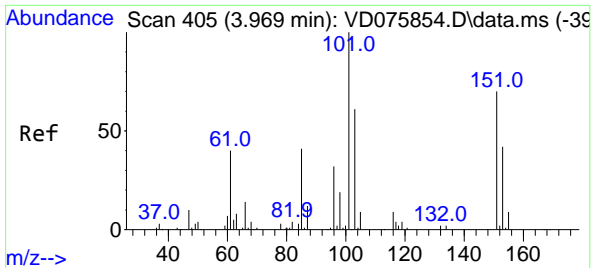
Tgt Ion: 64 Resp: 153856  
 Ion Ratio Lower Upper  
 64 100  
 66 33.0 21.8 40.4



#9  
 Trichlorofluoromethane  
 Concen: 25.439 ug/L  
 RT: 3.175 min Scan# 270  
 Delta R.T. -0.000 min  
 Lab File: VD075862.D  
 Acq: 27 Apr 2023 15:38

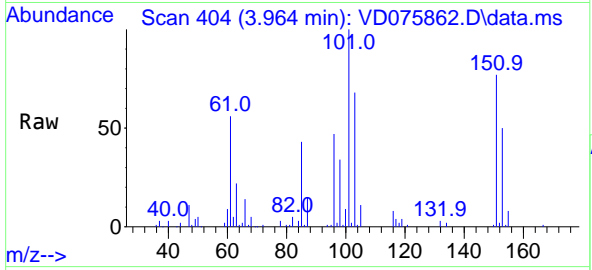
Tgt Ion: 101 Resp: 183859  
 Ion Ratio Lower Upper  
 101 100  
 103 64.1 52.2 78.4





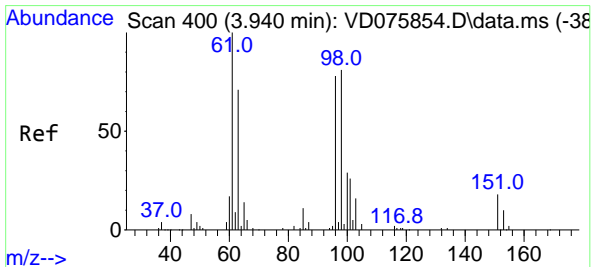
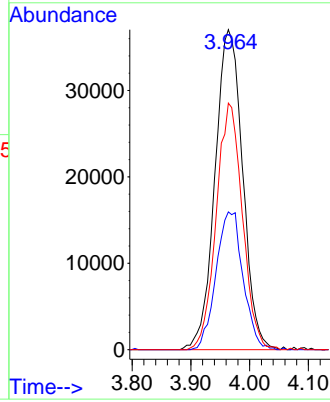
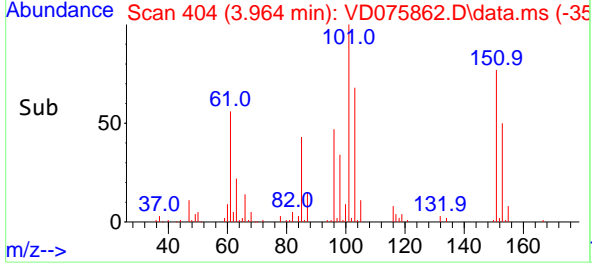
#10  
 1,1,2-Trichloro-1,2,2-trifluoroethane  
 Concen: 24.932 ug/L  
 RT: 3.964 min Scan# 404  
 Delta R.T. -0.000 min  
 Lab File: VD075862.D  
 Acq: 27 Apr 2023 15:38

Instrument : MSVOA\_D  
 ClientSampleId : EW937MSD

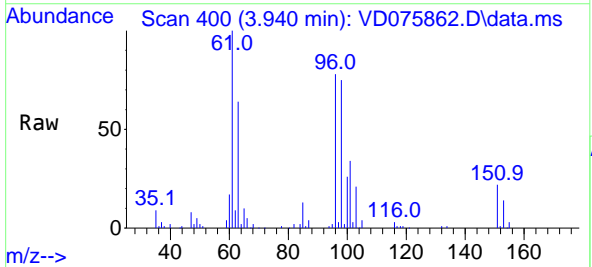


Tgt Ion: 101 Resp: 121059

Ion	Ratio	Lower	Upper
101	100		
85	42.0	32.9	49.3
151	72.9	57.2	85.8

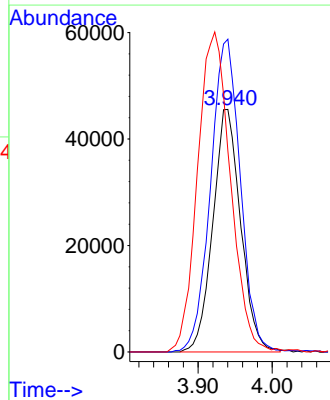
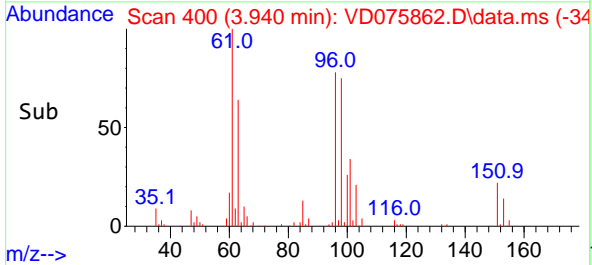


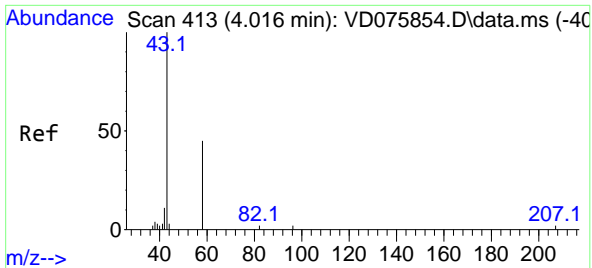
#12  
 1,1-Dichloroethene  
 Concen: 25.192 ug/L  
 RT: 3.940 min Scan# 400  
 Delta R.T. -0.000 min  
 Lab File: VD075862.D  
 Acq: 27 Apr 2023 15:38



Tgt Ion: 96 Resp: 118626

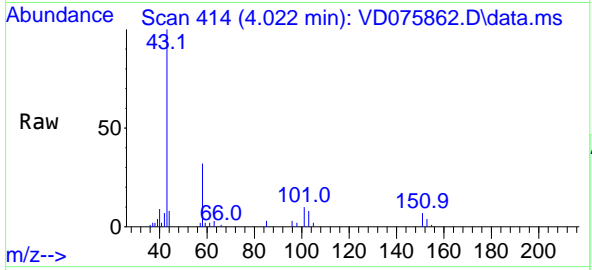
Ion	Ratio	Lower	Upper
96	100		
61	129.0	92.6	172.0
63	82.9	77.4	143.8



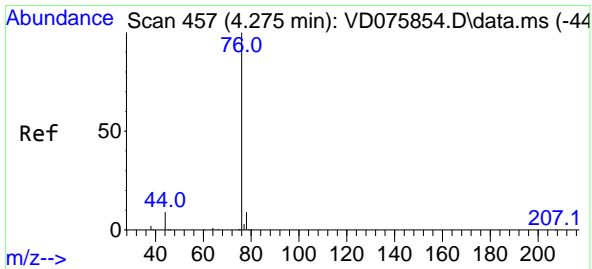
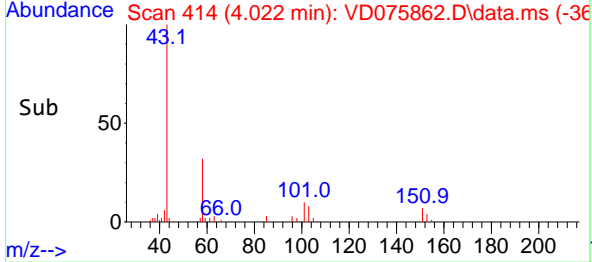
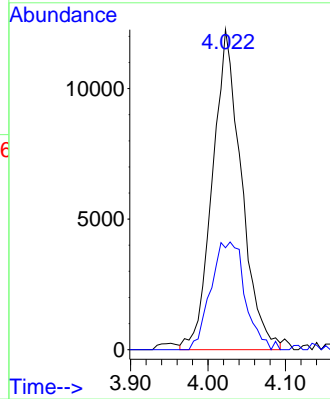


#13  
 Acetone  
 Concen: 54.518 ug/L  
 RT: 4.022 min Scan# 413  
 Delta R.T. -0.000 min  
 Lab File: VD075862.D  
 Acq: 27 Apr 2023 15:38

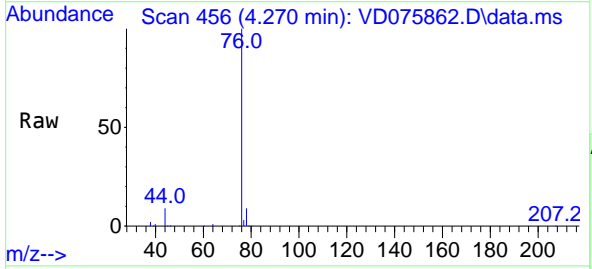
Instrument : MSVOA\_D  
 ClientSampleId : EW937MSD



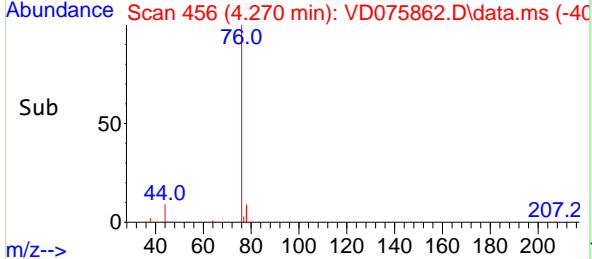
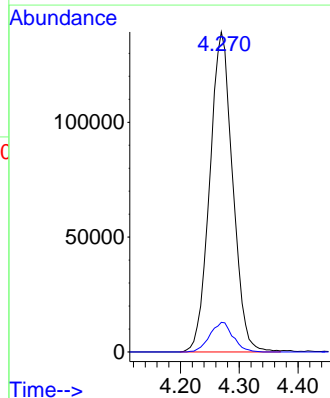
Tgt Ion: 43 Resp: 31821  
 Ion Ratio Lower Upper  
 43 100  
 58 19.4 0.0 87.4



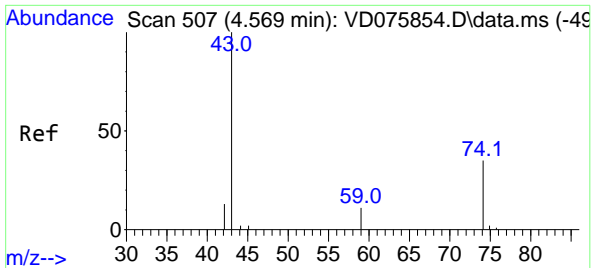
#14  
 Carbon disulfide  
 Concen: 22.939 ug/L  
 RT: 4.270 min Scan# 456  
 Delta R.T. -0.006 min  
 Lab File: VD075862.D  
 Acq: 27 Apr 2023 15:38



Tgt Ion: 76 Resp: 377290  
 Ion Ratio Lower Upper  
 76 100  
 78 9.3 7.0 10.6

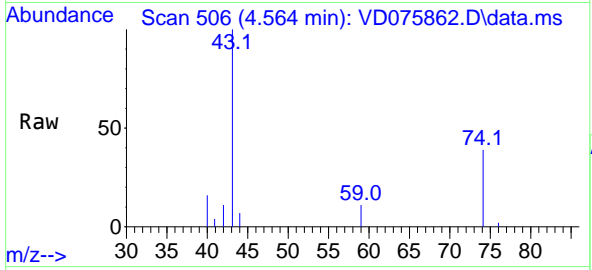




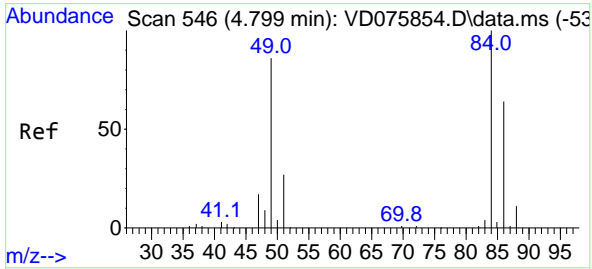
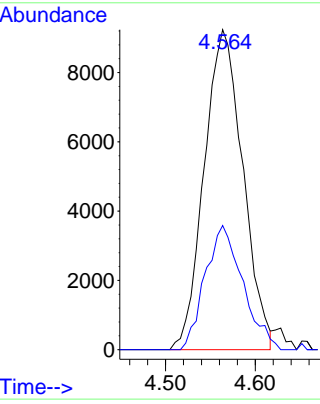
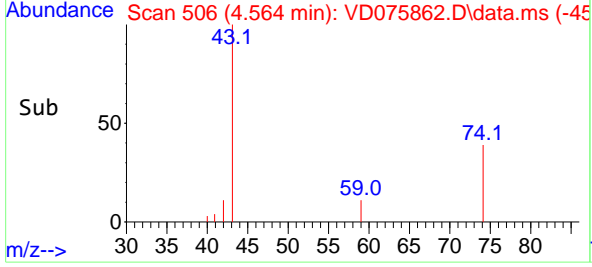


#15  
 Methyl Acetate  
 Concen: 21.872 ug/L  
 RT: 4.564 min Scan# 507  
 Delta R.T. -0.000 min  
 Lab File: VD075862.D  
 Acq: 27 Apr 2023 15:38

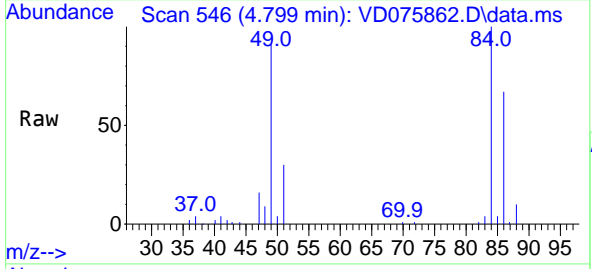
Instrument : MSVOA\_D  
 ClientSampleId : EW937MSD



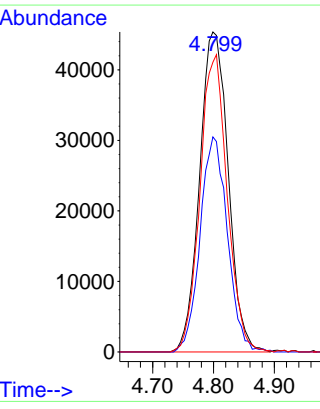
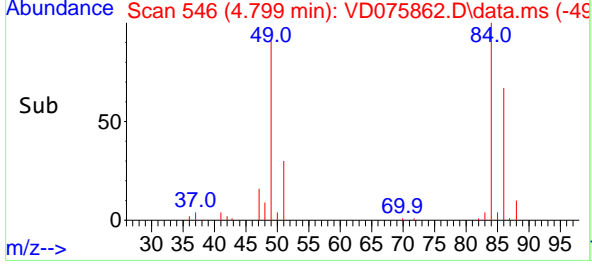
Tgt Ion: 43 Resp: 27667  
 Ion Ratio Lower Upper  
 43 100  
 74 37.7 12.8 19.2#

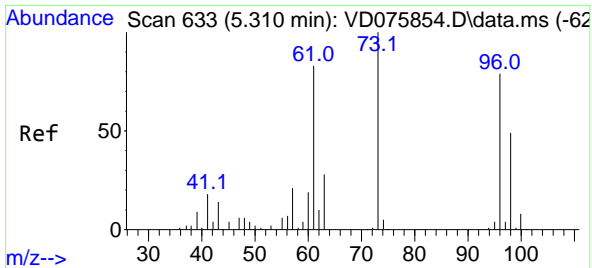


#16  
 Methylene chloride  
 Concen: 20.413 ug/L  
 RT: 4.799 min Scan# 546  
 Delta R.T. -0.006 min  
 Lab File: VD075862.D  
 Acq: 27 Apr 2023 15:38



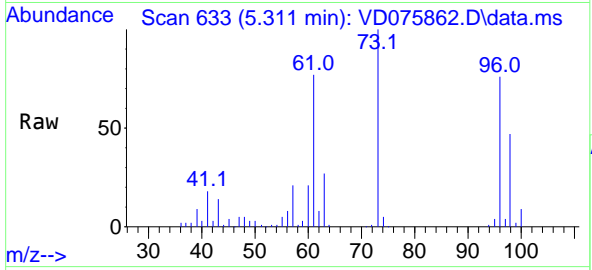
Tgt Ion: 84 Resp: 148305  
 Ion Ratio Lower Upper  
 84 100  
 86 67.2 45.8 85.2  
 49 90.6 60.8 112.8





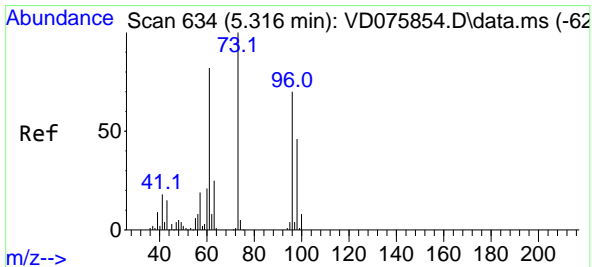
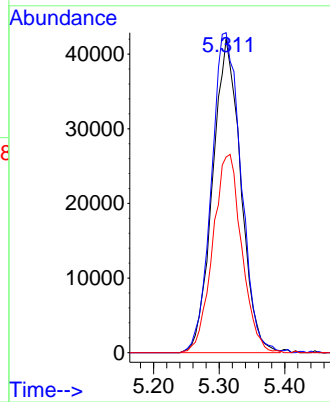
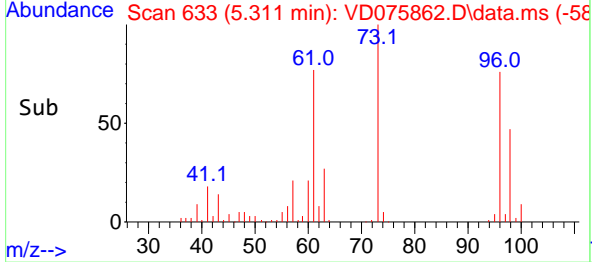
#17  
 trans-1,2-Dichloroethene  
 Concen: 23.689 ug/L  
 RT: 5.311 min Scan# 611  
 Delta R.T. -0.006 min  
 Lab File: VD075862.D  
 Acq: 27 Apr 2023 15:38

Instrument : MSVOA\_D  
 ClientSampleId : EW937MSD

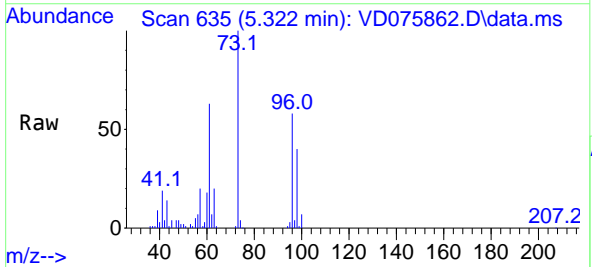


Tgt Ion: 96 Resp: 125081

Ion	Ratio	Lower	Upper
96	100		
61	102.2	72.9	135.5
98	62.5	43.0	79.8

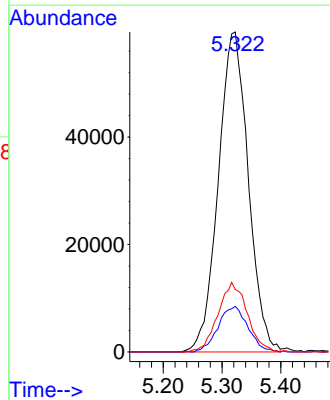
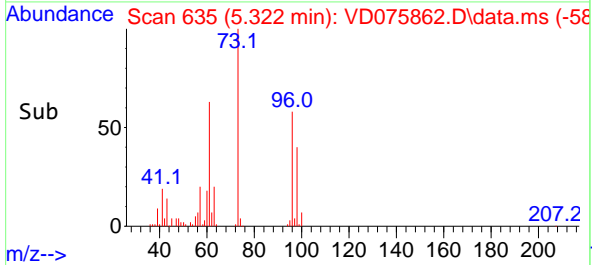


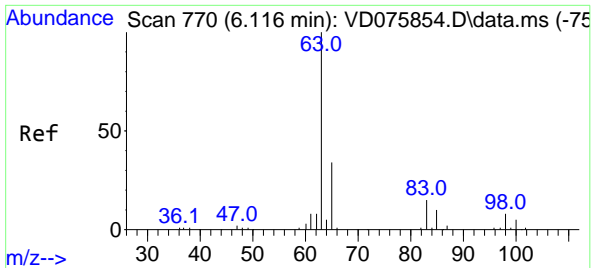
#18  
 Methyl tert-butyl Ether  
 Concen: 24.872 ug/L  
 RT: 5.322 min Scan# 635  
 Delta R.T. 0.006 min  
 Lab File: VD075862.D  
 Acq: 27 Apr 2023 15:38



Tgt Ion: 73 Resp: 210655

Ion	Ratio	Lower	Upper
73	100		
43	14.2	11.3	16.9
57	21.2	16.3	24.5



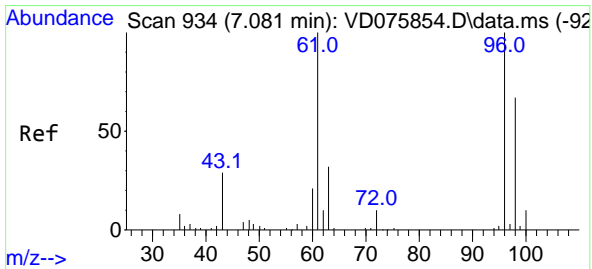
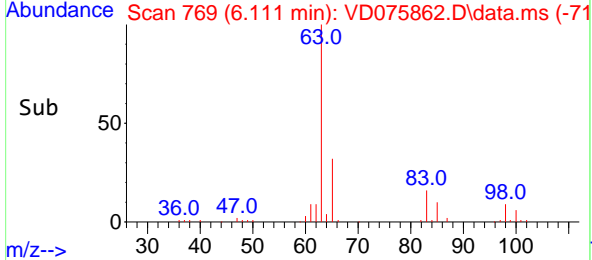
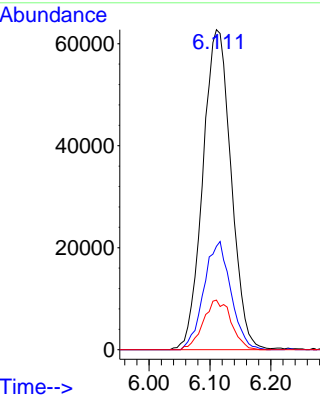
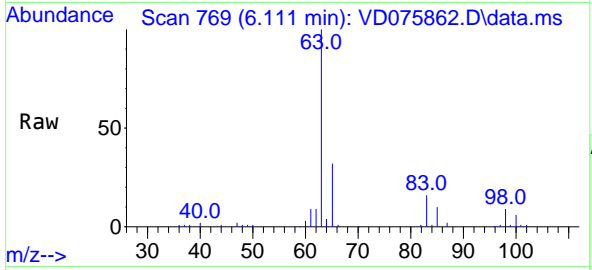


#19  
 1,1-Dichloroethane  
 Concen: 26.134 ug/L  
 RT: 6.111 min Scan# 770  
 Delta R.T. -0.000 min  
 Lab File: VD075862.D  
 Acq: 27 Apr 2023 15:38

Instrument : MSVOA\_D  
 ClientSampleId : EW937MSD

Tgt Ion: 63 Resp: 202152

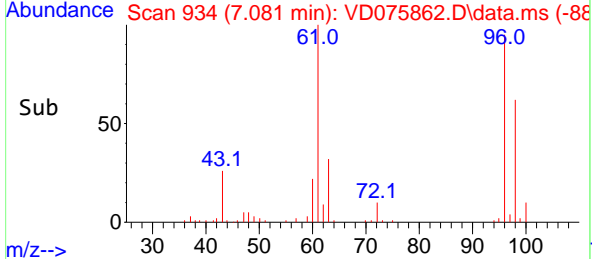
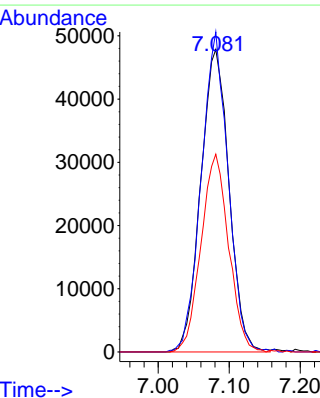
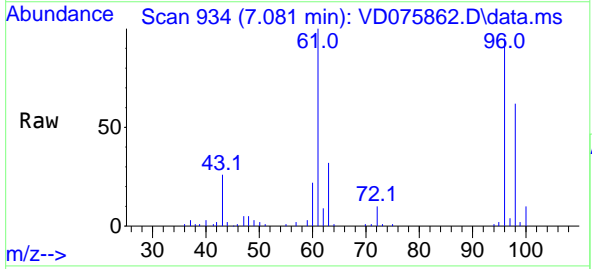
Ion	Ratio	Lower	Upper
63	100		
65	32.3	22.8	42.4
83	15.5	11.2	20.8

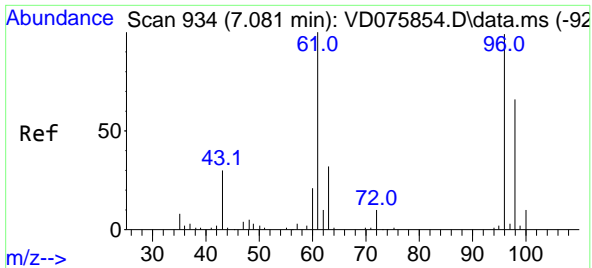


#20  
 cis-1,2-Dichloroethene  
 Concen: 23.688 ug/L  
 RT: 7.081 min Scan# 934  
 Delta R.T. -0.000 min  
 Lab File: VD075862.D  
 Acq: 27 Apr 2023 15:38

Tgt Ion: 96 Resp: 132254

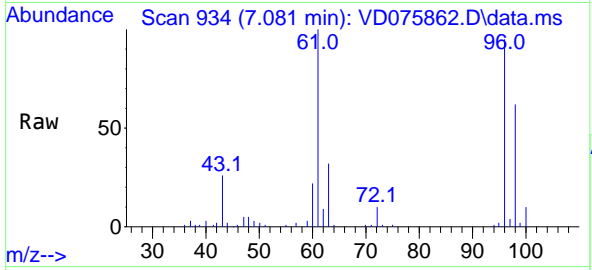
Ion	Ratio	Lower	Upper
96	100		
61	105.8	67.5	125.3
98	65.4	47.5	88.1



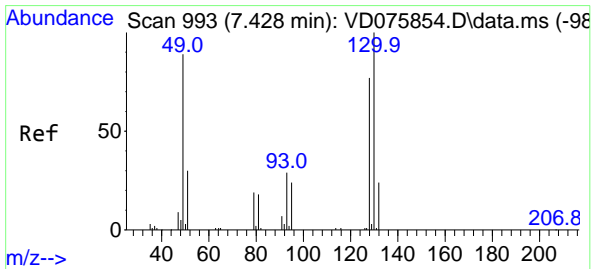
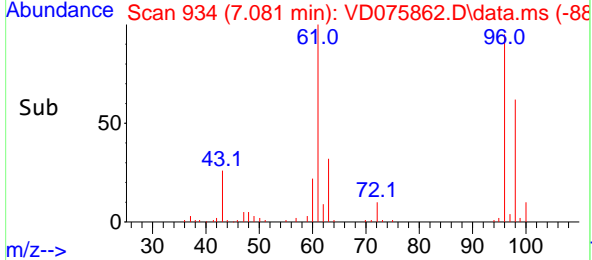
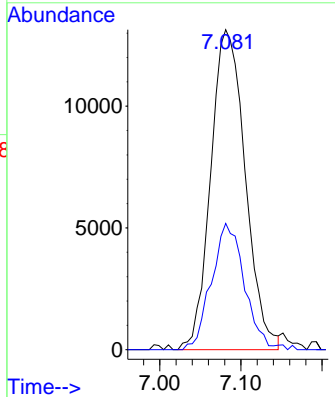


#22  
 2-Butanone  
 Concen: 51.077 ug/L  
 RT: 7.081 min Scan# 91  
 Delta R.T. -0.006 min  
 Lab File: VD075862.D  
 Acq: 27 Apr 2023 15:38

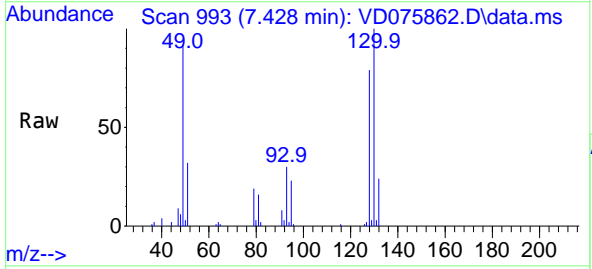
Instrument : MSVOA\_D  
 ClientSampleId : EW937MSD



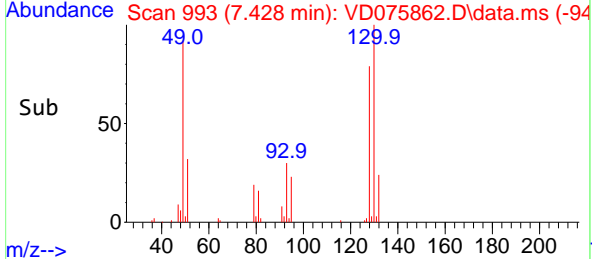
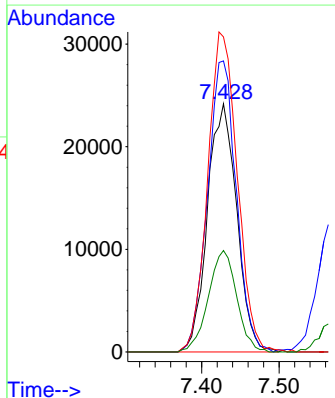
Tgt Ion: 43 Resp: 38866  
 Ion Ratio Lower Upper  
 43 100  
 72 37.4 20.5 61.5

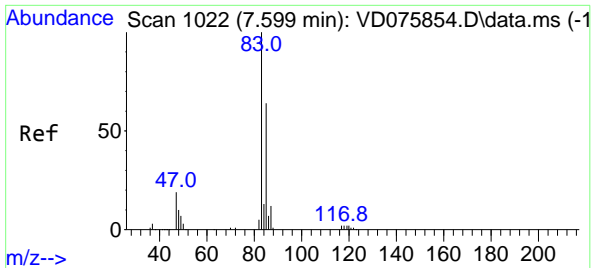


#23  
 Bromochloromethane  
 Concen: 24.523 ug/L  
 RT: 7.428 min Scan# 993  
 Delta R.T. -0.000 min  
 Lab File: VD075862.D  
 Acq: 27 Apr 2023 15:38



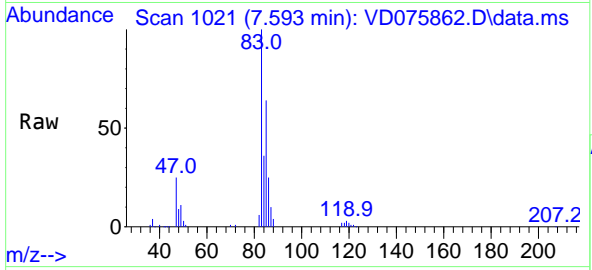
Tgt Ion: 128 Resp: 63497  
 Ion Ratio Lower Upper  
 128 100  
 49 117.3 76.4 142.0  
 130 127.0 93.5 173.7  
 51 40.9 24.8 37.2#



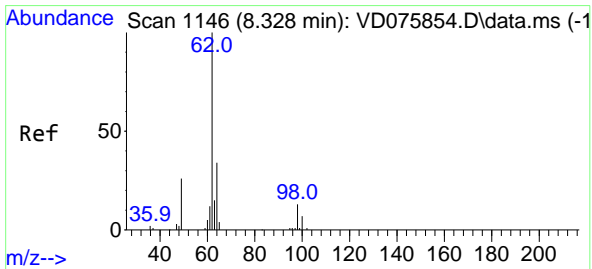
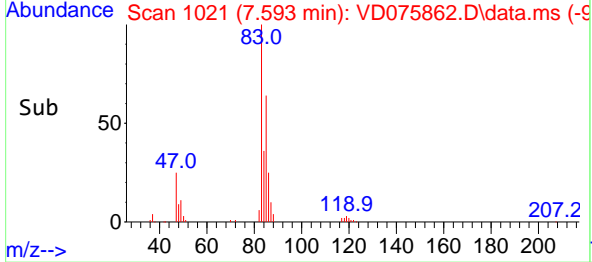
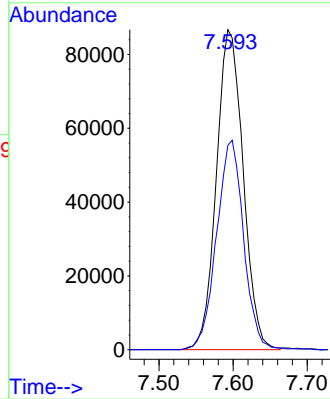


#25  
 Chloroform  
 Concen: 25.107 ug/L  
 RT: 7.593 min Scan# 1021  
 Delta R.T. -0.006 min  
 Lab File: VD075862.D  
 Acq: 27 Apr 2023 15:38

Instrument : MSVOA\_D  
 ClientSampleId : EW937MSD

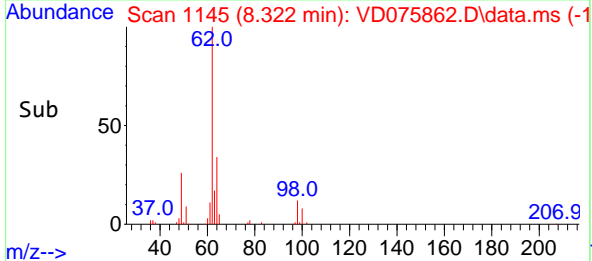
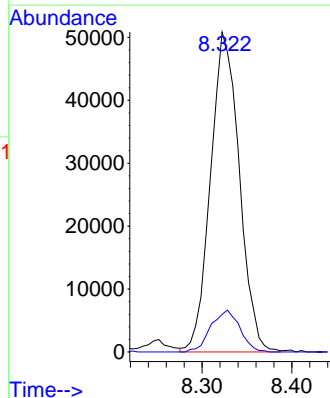
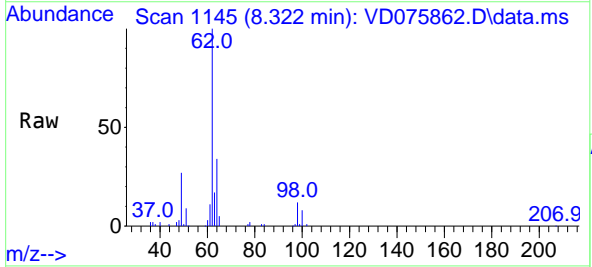


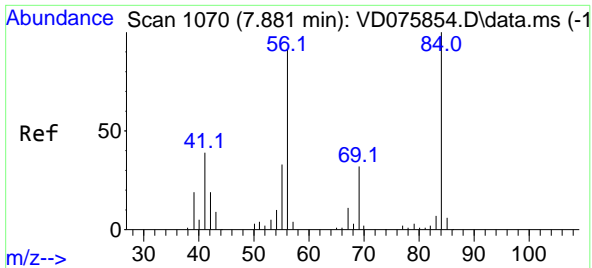
Tgt Ion: 83 Resp: 217655  
 Ion Ratio Lower Upper  
 83 100  
 85 63.9 44.4 82.5



#27  
 1,2-Dichloroethane  
 Concen: 25.326 ug/L  
 RT: 8.322 min Scan# 1145  
 Delta R.T. -0.006 min  
 Lab File: VD075862.D  
 Acq: 27 Apr 2023 15:38

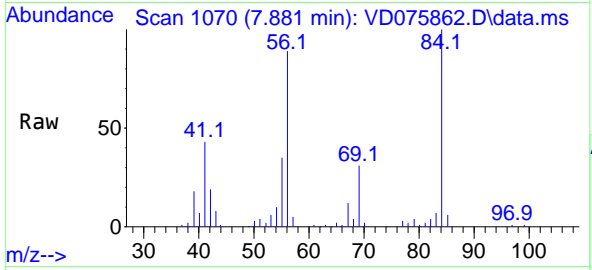
Tgt Ion: 62 Resp: 113329  
 Ion Ratio Lower Upper  
 62 100  
 98 11.8 10.2 15.2





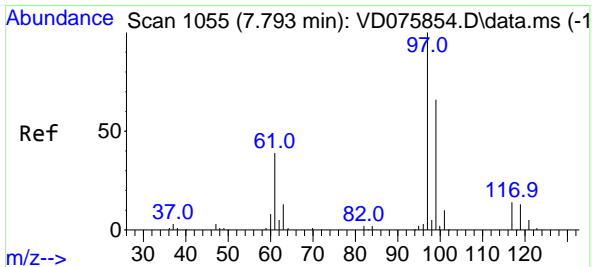
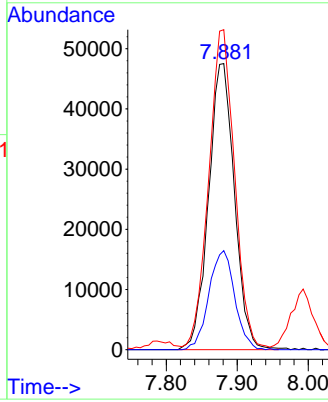
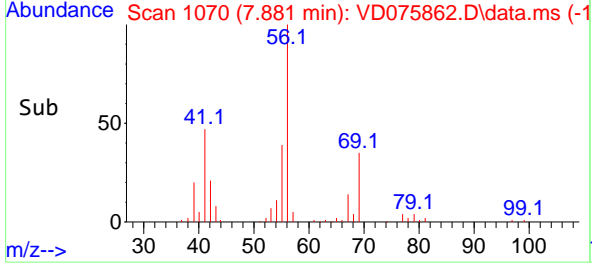
#29  
 Cyclohexane  
 Concen: 24.968 ug/L  
 RT: 7.881 min Scan# 1070  
 Delta R.T. -0.000 min  
 Lab File: VD075862.D  
 Acq: 27 Apr 2023 15:38

Instrument : MSVOA\_D  
 ClientSampleId : EW937MSD

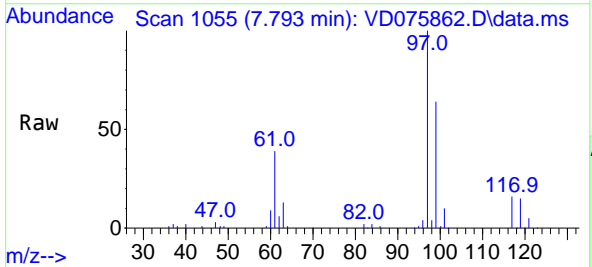


Tgt Ion: 56 Resp: 120148

Ion	Ratio	Lower	Upper
56	100		
69	34.6	28.2	42.2
84	112.2	92.4	138.6

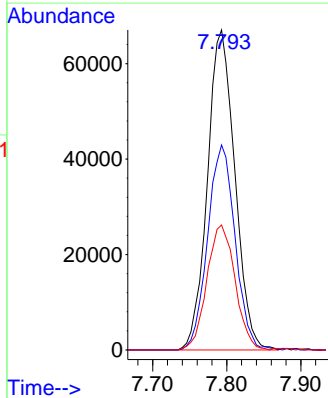
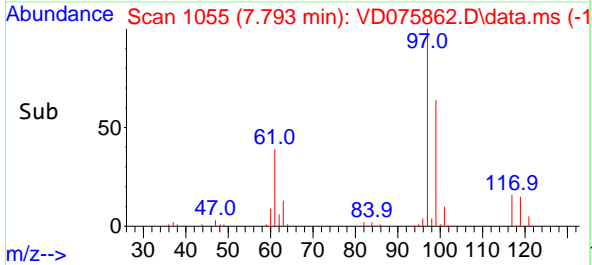


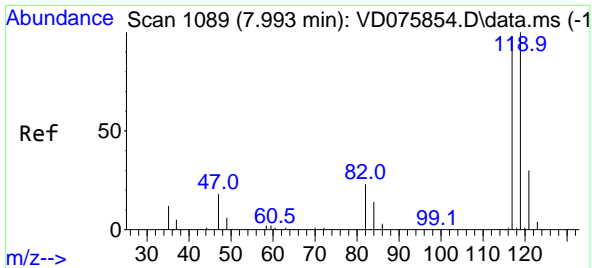
#30  
 1,1,1-Trichloroethane  
 Concen: 29.009 ug/L  
 RT: 7.793 min Scan# 1055  
 Delta R.T. -0.000 min  
 Lab File: VD075862.D  
 Acq: 27 Apr 2023 15:38



Tgt Ion: 97 Resp: 172528

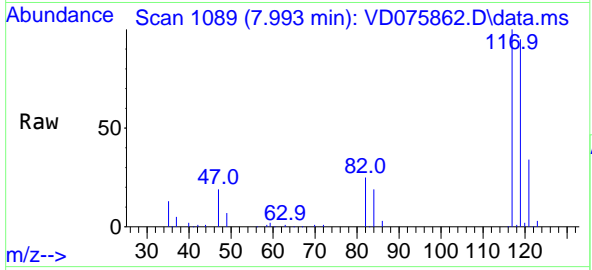
Ion	Ratio	Lower	Upper
97	100		
99	63.8	51.5	77.3
61	40.1	32.1	48.1



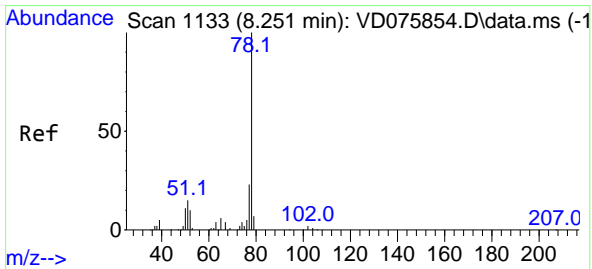
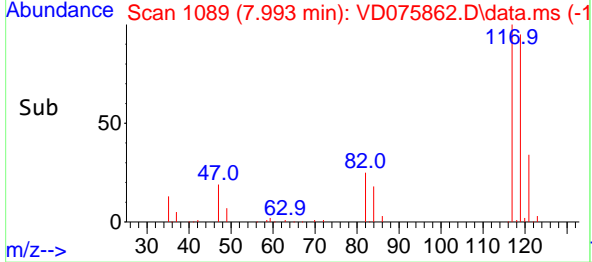
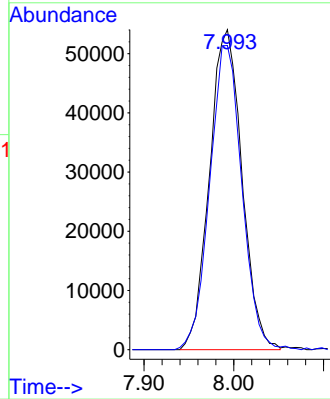


#31  
 Carbon tetrachloride  
 Concen: 28.477 ug/L  
 RT: 7.993 min Scan# 1089  
 Delta R.T. -0.000 min  
 Lab File: VD075862.D  
 Acq: 27 Apr 2023 15:38

Instrument : MSVOA\_D  
 ClientSampleId : EW937MSD

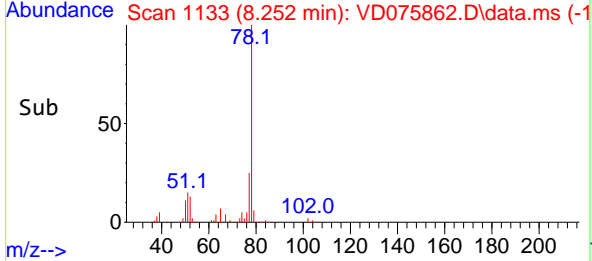
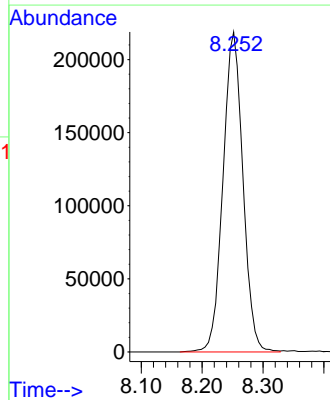
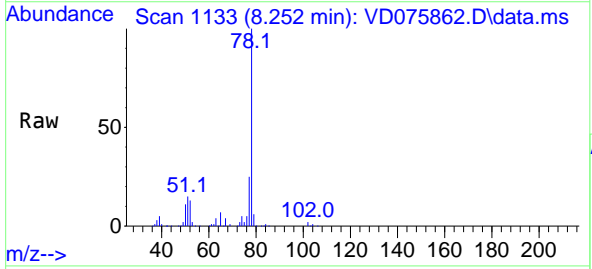


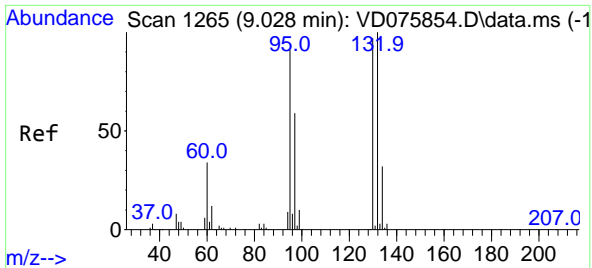
Tgt Ion:117 Resp: 135877  
 Ion Ratio Lower Upper  
 117 100  
 119 93.7 78.2 117.4



#33  
 Benzene  
 Concen: 29.294 ug/L  
 RT: 8.252 min Scan# 1133  
 Delta R.T. -0.000 min  
 Lab File: VD075862.D  
 Acq: 27 Apr 2023 15:38

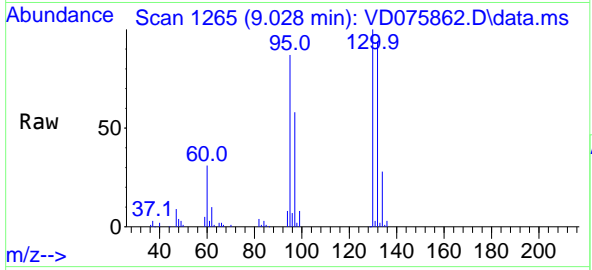
Tgt Ion: 78 Resp: 498089





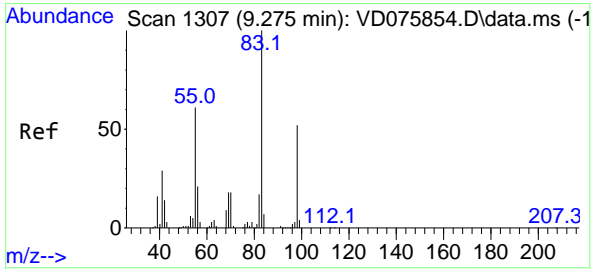
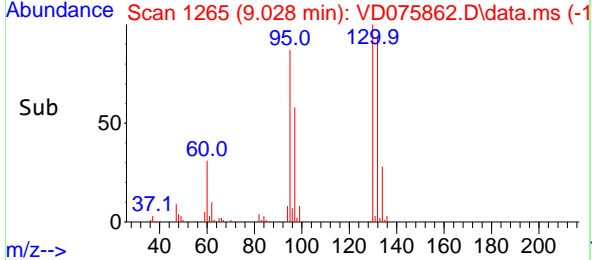
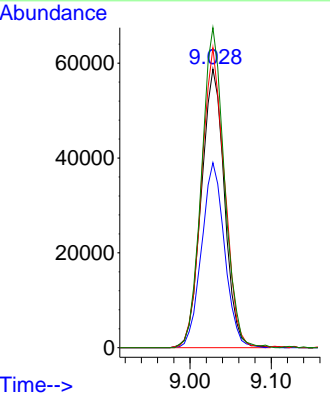
#34  
 Trichloroethene  
 Concen: 26.371 ug/L  
 RT: 9.028 min Scan# 11  
 Delta R.T. -0.000 min  
 Lab File: VD075862.D  
 Acq: 27 Apr 2023 15:38

Instrument : MSVOA\_D  
 ClientSampleId : EW937MSD



Tgt Ion: 95 Resp: 115958

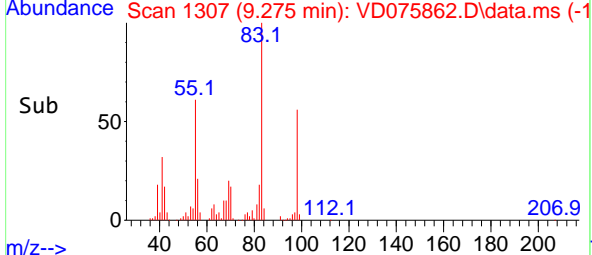
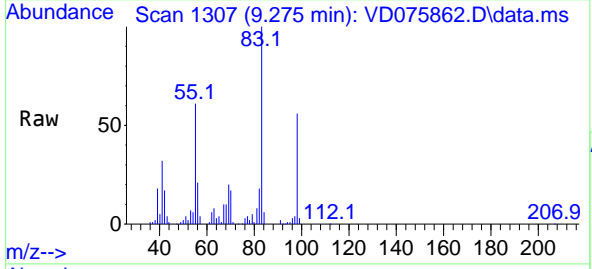
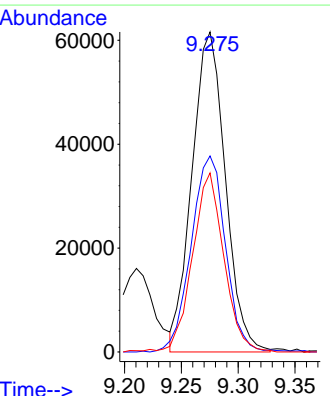
Ion	Ratio	Lower	Upper
95	100		
97	66.4	46.0	85.4
132	107.6	73.3	136.1
130	114.8	75.3	139.9



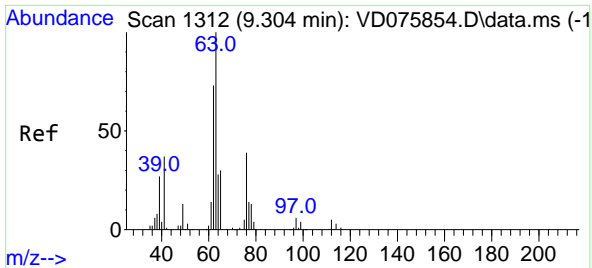
#35  
 Methylcyclohexane  
 Concen: 18.561 ug/L  
 RT: 9.275 min Scan# 1307  
 Delta R.T. -0.000 min  
 Lab File: VD075862.D  
 Acq: 27 Apr 2023 15:38

Tgt Ion: 83 Resp: 125829

Ion	Ratio	Lower	Upper
83	100		
55	62.7	48.2	72.2
98	52.4	40.8	61.2



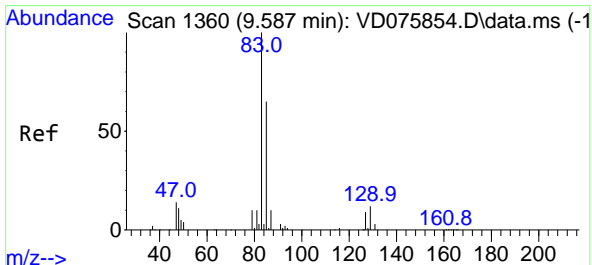
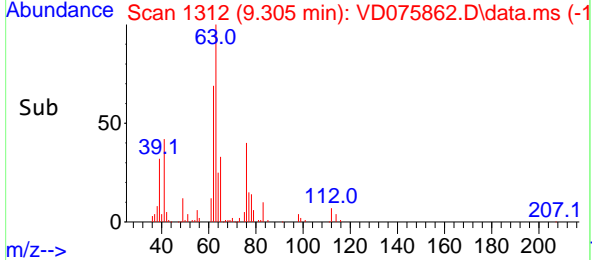
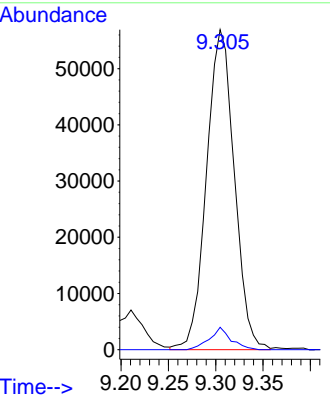
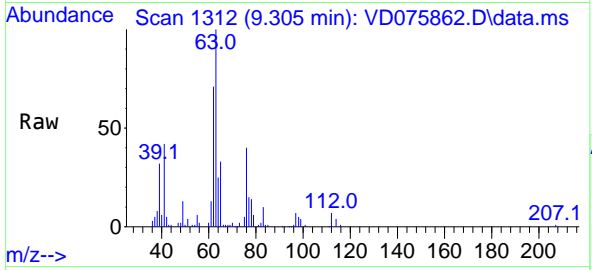




#37  
 1,2-Dichloropropane  
 Concen: 29.764 ug/L  
 RT: 9.305 min Scan# 111  
 Delta R.T. -0.000 min  
 Lab File: VD075862.D  
 Acq: 27 Apr 2023 15:38

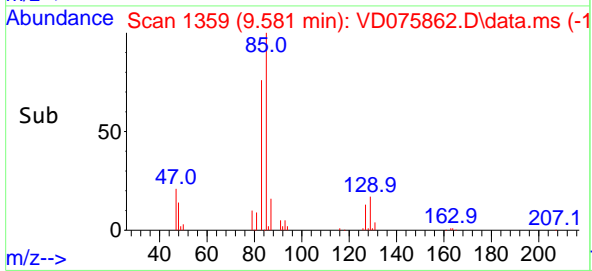
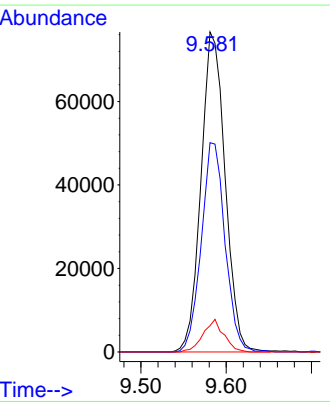
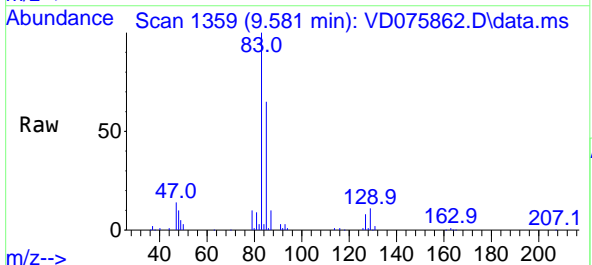
Instrument : MSVOA\_D  
 ClientSampleId : EW937MSD

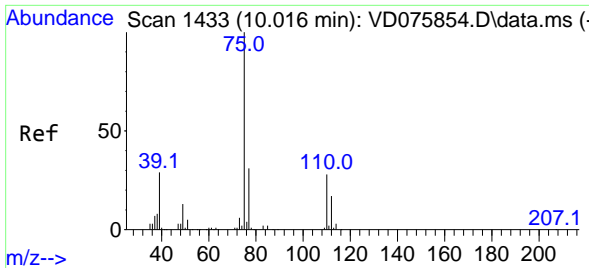
Tgt Ion: 63 Resp: 116251  
 Ion Ratio Lower Upper  
 63 100  
 112 5.4 4.0 6.0



#38  
 Bromodichloromethane  
 Concen: 28.596 ug/L  
 RT: 9.581 min Scan# 1359  
 Delta R.T. -0.006 min  
 Lab File: VD075862.D  
 Acq: 27 Apr 2023 15:38

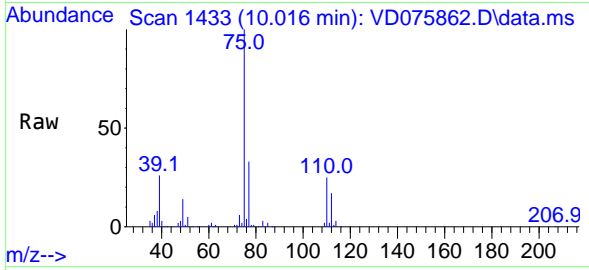
Tgt Ion: 83 Resp: 150594  
 Ion Ratio Lower Upper  
 83 100  
 85 65.4 44.2 82.2  
 127 8.2 6.3 9.5



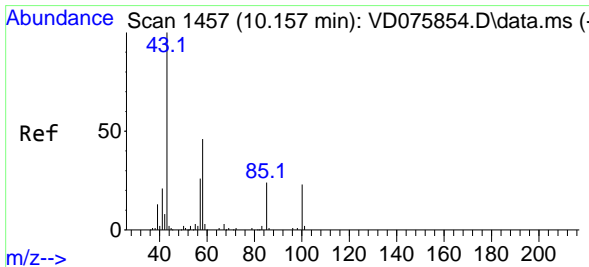
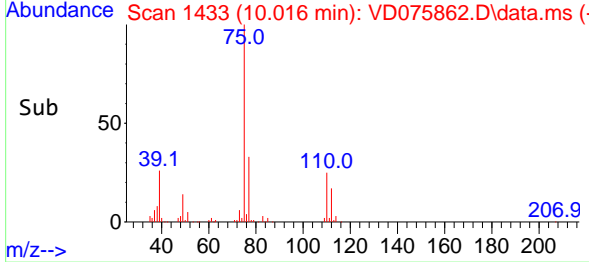
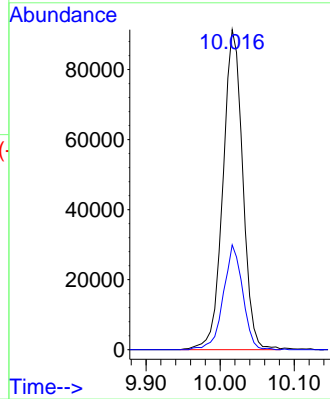


#39  
 cis-1,3-Dichloropropene  
 Concen: 27.256 ug/L  
 RT: 10.016 min Scan# 1433  
 Delta R.T. -0.000 min  
 Lab File: VD075862.D  
 Acq: 27 Apr 2023 15:38

Instrument : MSVOA\_D  
 ClientSampleId : EW937MSD

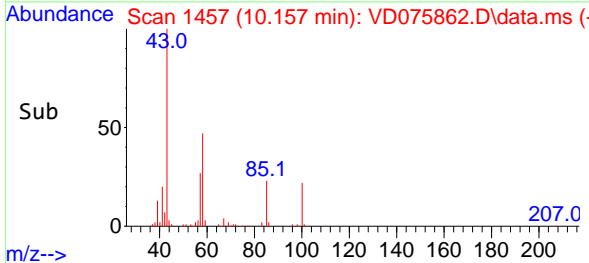
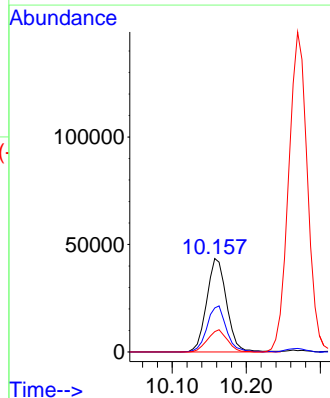
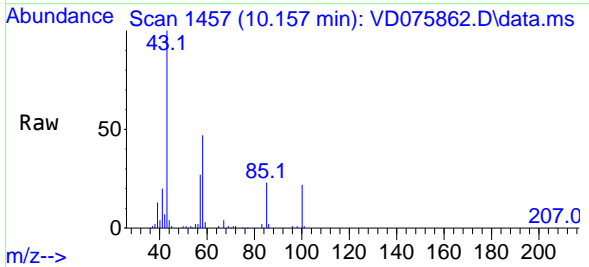


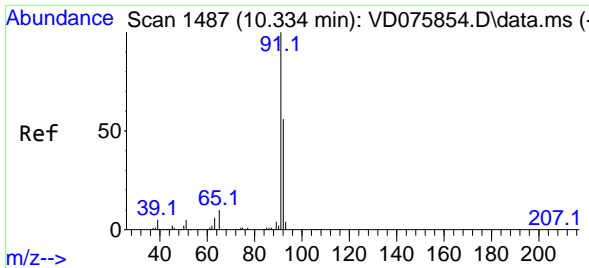
Tgt Ion: 75 Resp: 169301  
 Ion Ratio Lower Upper  
 75 100  
 77 32.8 23.4 43.6



#40  
 4-Methyl-2-pentanone  
 Concen: 57.067 ug/L  
 RT: 10.157 min Scan# 1457  
 Delta R.T. -0.000 min  
 Lab File: VD075862.D  
 Acq: 27 Apr 2023 15:38

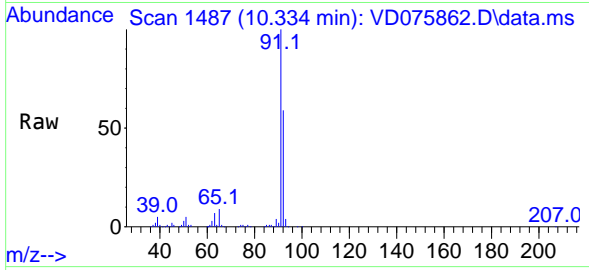
Tgt Ion: 43 Resp: 81265  
 Ion Ratio Lower Upper  
 43 100  
 58 47.7 39.1 58.7  
 100 23.4 19.4 29.0



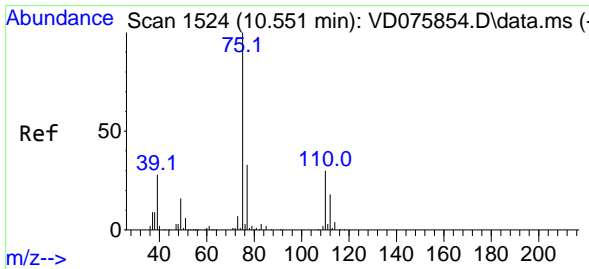
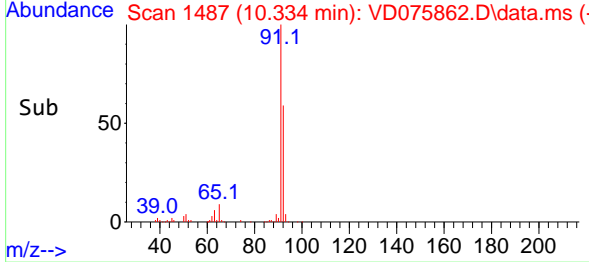
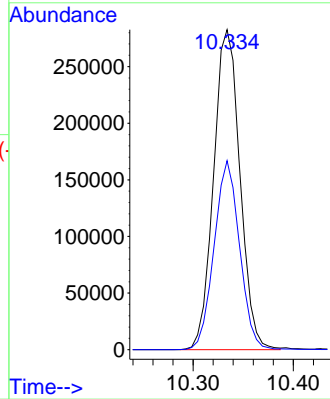


#42  
 Toluene  
 Concen: 28.023 ug/L  
 RT: 10.334 min Scan# 1487  
 Delta R.T. -0.000 min  
 Lab File: VD075862.D  
 Acq: 27 Apr 2023 15:38

Instrument : MSVOA\_D  
 ClientSampleId : EW937MSD

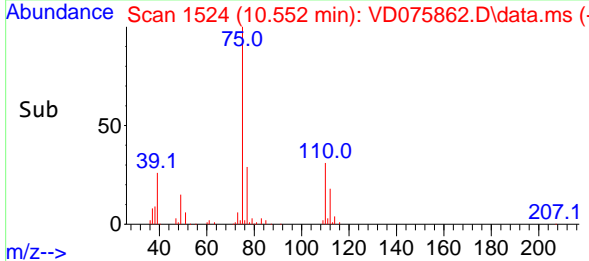
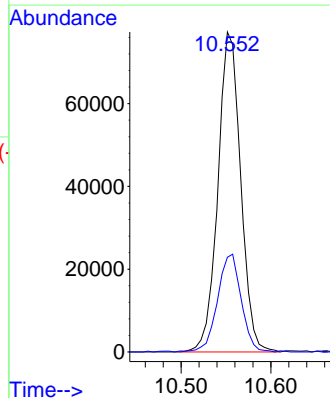
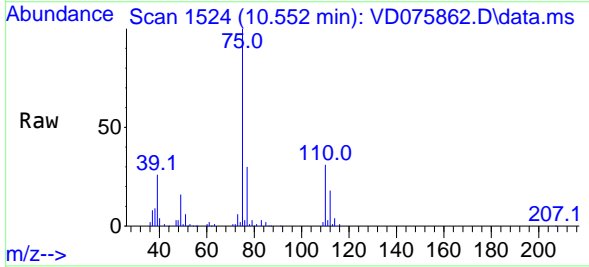


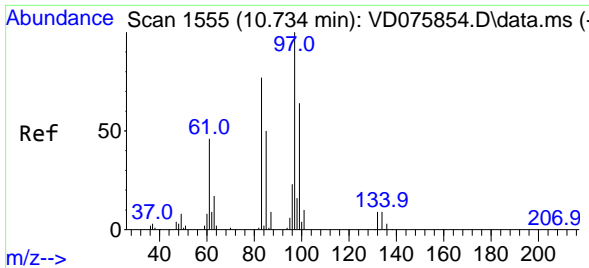
Tgt Ion: 91 Resp: 515624  
 Ion Ratio Lower Upper  
 91 100  
 92 59.1 39.3 72.9



#44  
 trans-1,3-Dichloropropene  
 Concen: 27.284 ug/L  
 RT: 10.552 min Scan# 1524  
 Delta R.T. -0.000 min  
 Lab File: VD075862.D  
 Acq: 27 Apr 2023 15:38

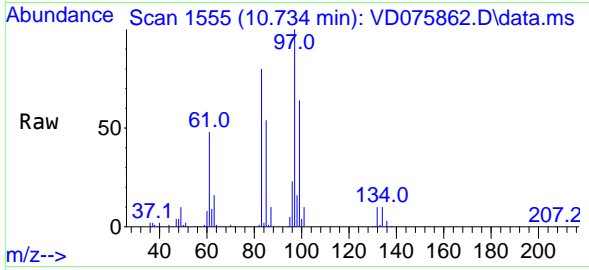
Tgt Ion: 75 Resp: 136147  
 Ion Ratio Lower Upper  
 75 100  
 77 29.6 22.0 41.0





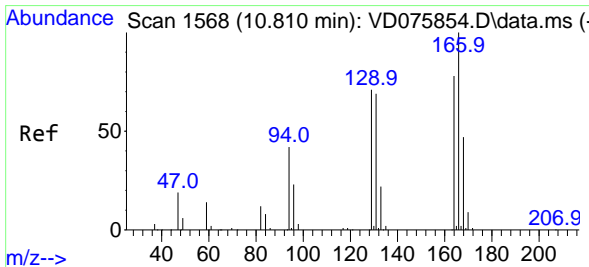
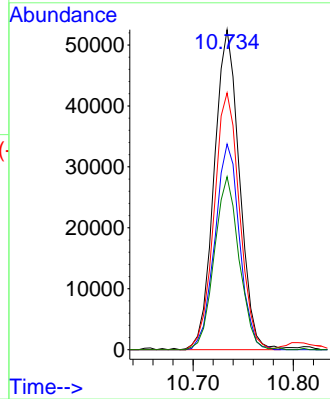
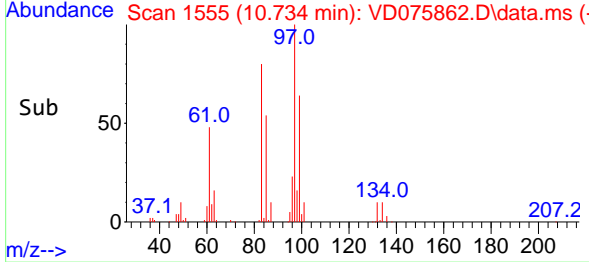
#45  
 1,1,2-Trichloroethane  
 Concen: 27.626 ug/L  
 RT: 10.734 min Scan# 1555  
 Delta R.T. -0.000 min  
 Lab File: VD075862.D  
 Acq: 27 Apr 2023 15:38

Instrument : MSVOA\_D  
 ClientSampleId : EW937MSD

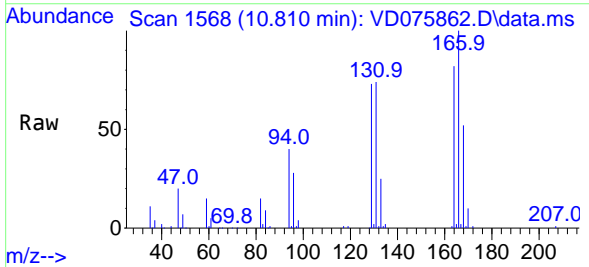


Tgt Ion: 97 Resp: 91796

Ion	Ratio	Lower	Upper
97	100		
99	64.2	42.2	78.4
83	80.3	54.8	101.8
85	54.0	37.0	68.8

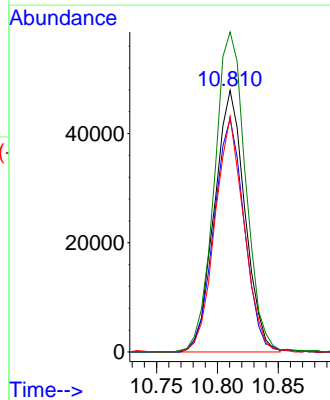
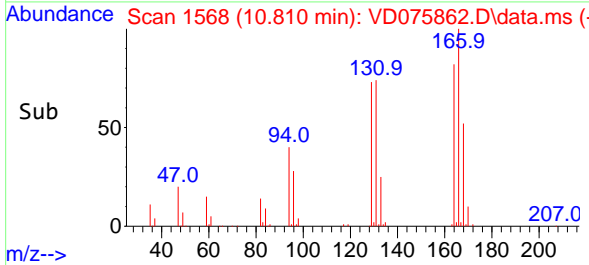


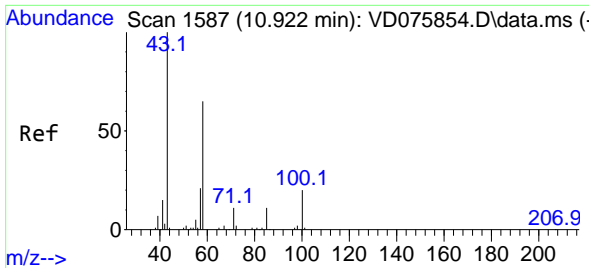
#46  
 Tetrachloroethene  
 Concen: 23.122 ug/L  
 RT: 10.810 min Scan# 1568  
 Delta R.T. -0.000 min  
 Lab File: VD075862.D  
 Acq: 27 Apr 2023 15:38



Tgt Ion: 164 Resp: 83392

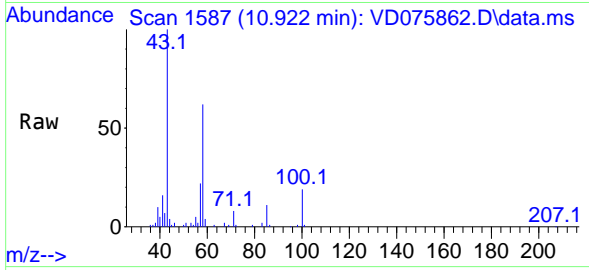
Ion	Ratio	Lower	Upper
164	100		
129	89.2	60.3	112.1
131	90.1	58.9	109.3
166	122.4	83.0	154.1



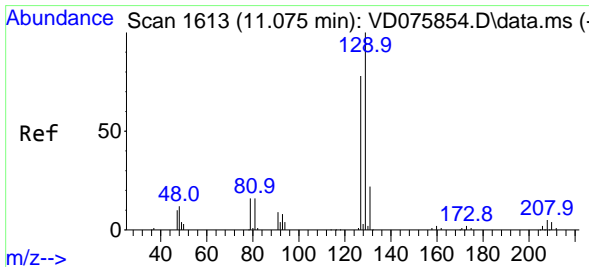
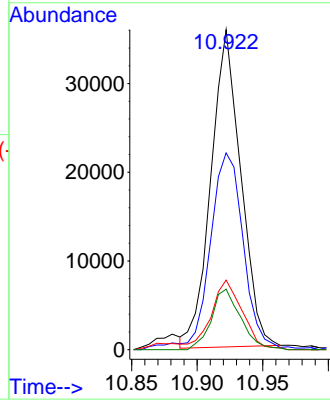
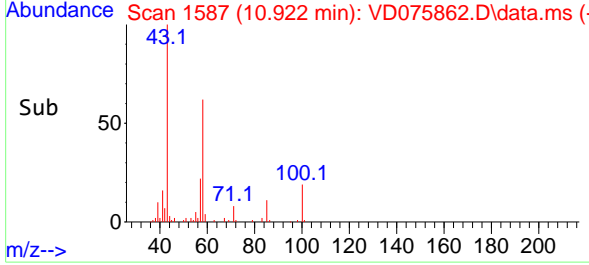


#48  
 2-Hexanone  
 Concen: 56.475 ug/L  
 RT: 10.922 min Scan# 1587  
 Delta R.T. -0.000 min  
 Lab File: VD075862.D  
 Acq: 27 Apr 2023 15:38

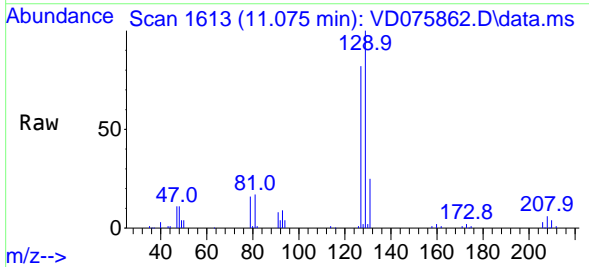
Instrument : MSVOA\_D  
 ClientSampleId : EW937MSD



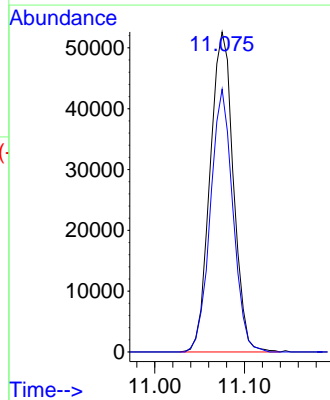
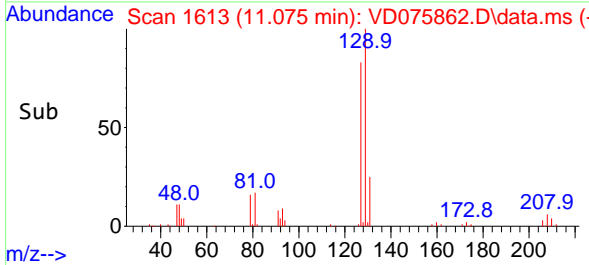
Tgt Ion: 43 Resp: 56696  
 Ion Ratio Lower Upper  
 43 100  
 58 67.5 59.7 89.5  
 57 22.7 17.9 26.9  
 100 18.8 15.8 23.6

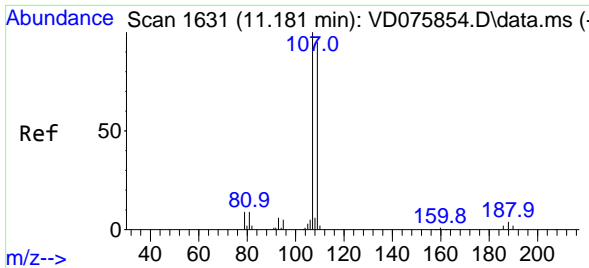


#49  
 Dibromochloromethane  
 Concen: 26.243 ug/L  
 RT: 11.075 min Scan# 1613  
 Delta R.T. -0.000 min  
 Lab File: VD075862.D  
 Acq: 27 Apr 2023 15:38



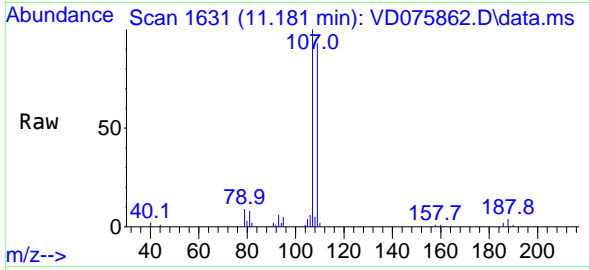
Tgt Ion: 129 Resp: 94931  
 Ion Ratio Lower Upper  
 129 100  
 127 82.1 55.6 103.4





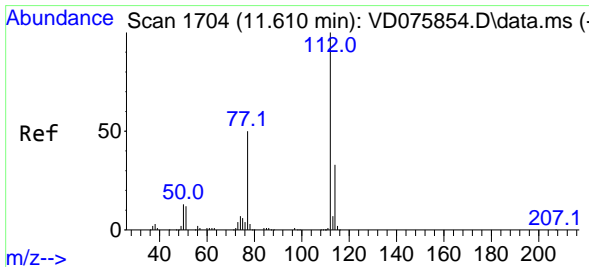
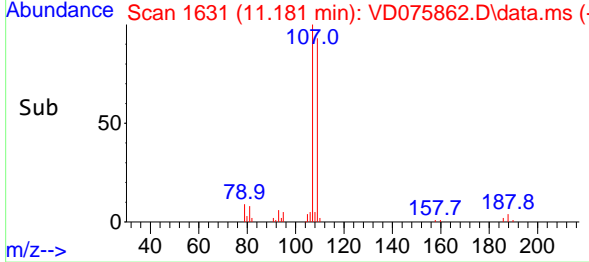
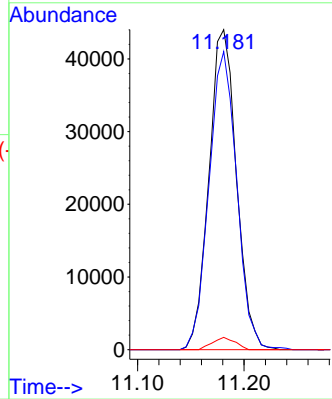
#50  
 1,2-Dibromoethane  
 Concen: 26.391 ug/L  
 RT: 11.181 min Scan# 10  
 Delta R.T. -0.000 min  
 Lab File: VD075862.D  
 Acq: 27 Apr 2023 15:38

Instrument : MSVOA\_D  
 ClientSampleId : EW937MSD

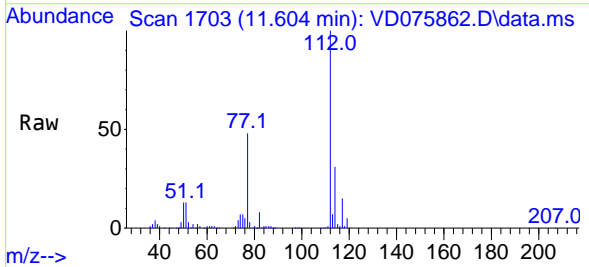


Tgt Ion:107 Resp: 79061

Ion	Ratio	Lower	Upper
107	100		
109	93.1	67.6	125.6
188	3.9	3.0	4.6

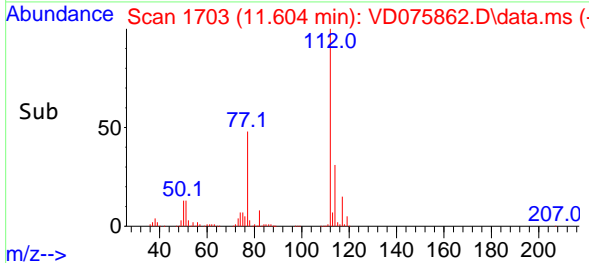
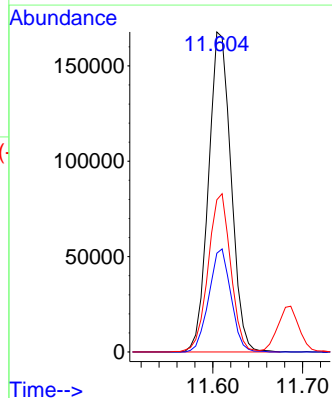


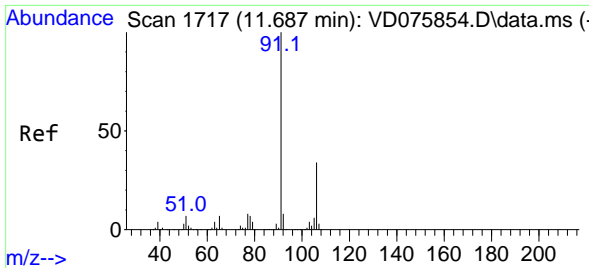
#51  
 Chlorobenzene  
 Concen: 24.265 ug/L  
 RT: 11.604 min Scan# 1703  
 Delta R.T. -0.006 min  
 Lab File: VD075862.D  
 Acq: 27 Apr 2023 15:38



Tgt Ion:112 Resp: 292089

Ion	Ratio	Lower	Upper
112	100		
114	30.9	23.0	42.8
77	47.6	39.7	59.5

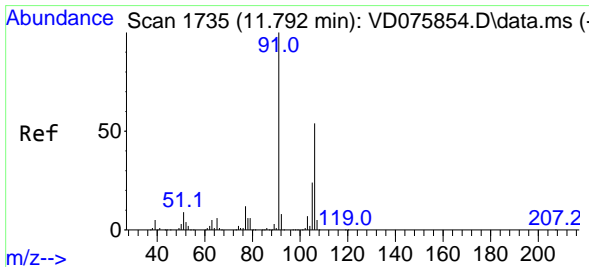
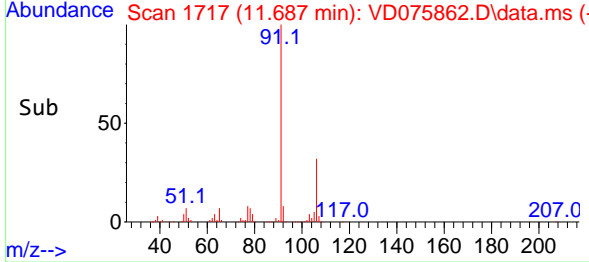
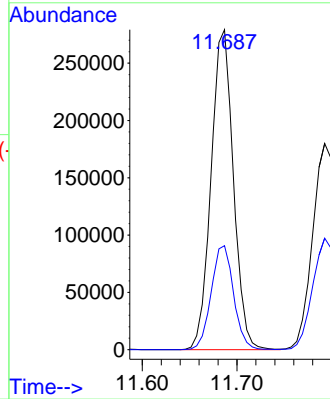
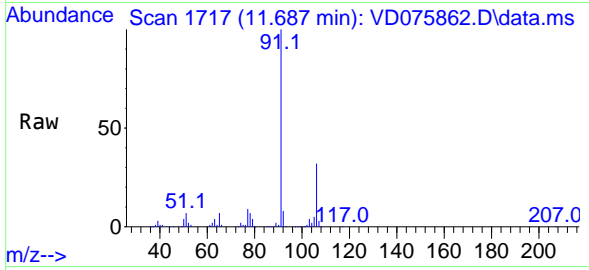




#52  
 Ethylbenzene  
 Concen: 24.259 ug/L  
 RT: 11.687 min Scan# 1717  
 Delta R.T. -0.000 min  
 Lab File: VD075862.D  
 Acq: 27 Apr 2023 15:38

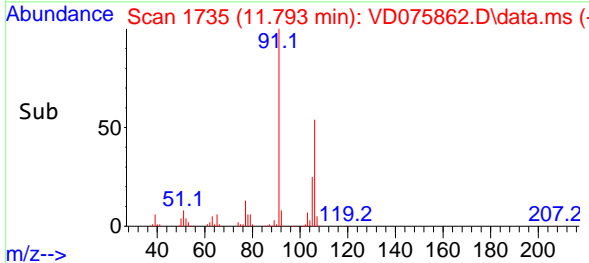
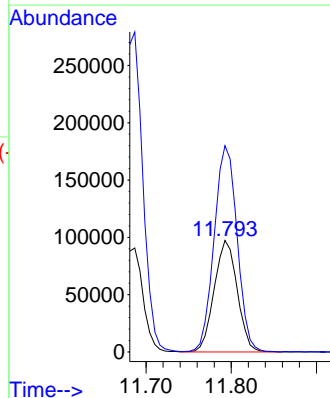
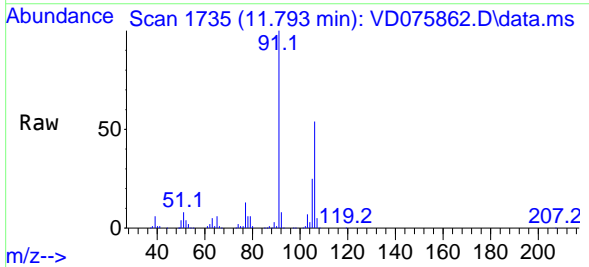
Instrument : MSVOA\_D  
 ClientSampleId : EW937MSD

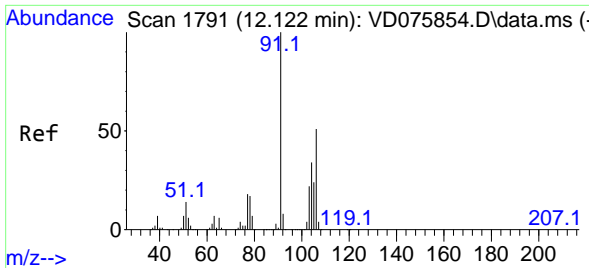
Tgt Ion: 91 Resp: 457720  
 Ion Ratio Lower Upper  
 91 100  
 106 32.5 23.7 43.9



#53  
 m,p-Xylene  
 Concen: 24.338 ug/L  
 RT: 11.793 min Scan# 1735  
 Delta R.T. -0.000 min  
 Lab File: VD075862.D  
 Acq: 27 Apr 2023 15:38

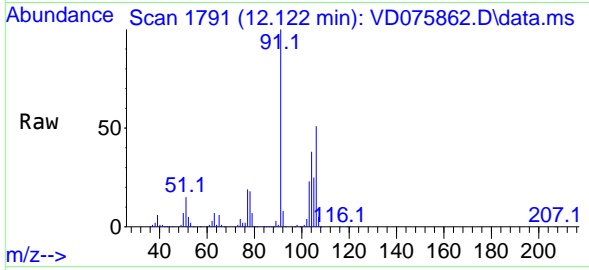
Tgt Ion: 106 Resp: 182854  
 Ion Ratio Lower Upper  
 106 100  
 91 185.0 130.9 243.1



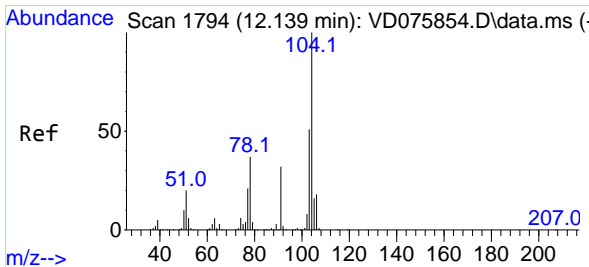
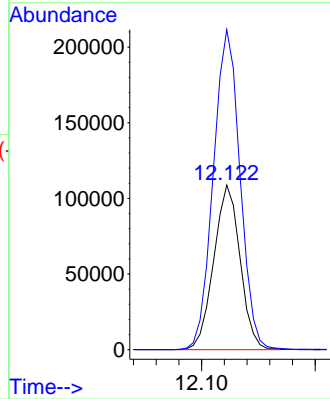
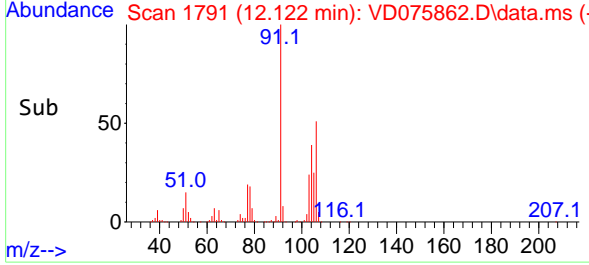


#54  
 o-Xylene  
 Concen: 24.555 ug/L  
 RT: 12.122 min Scan# 1791  
 Delta R.T. -0.000 min  
 Lab File: VD075862.D  
 Acq: 27 Apr 2023 15:38

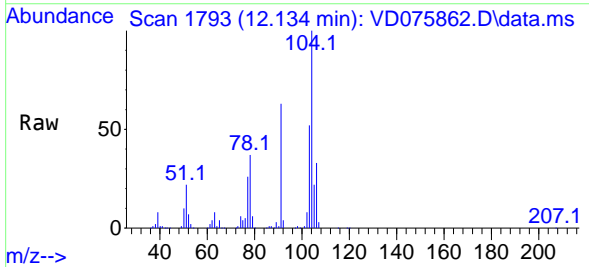
Instrument : MSVOA\_D  
 ClientSampleId : EW937MSD



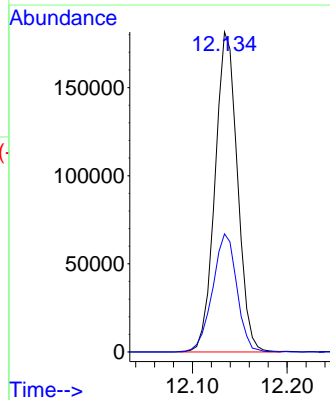
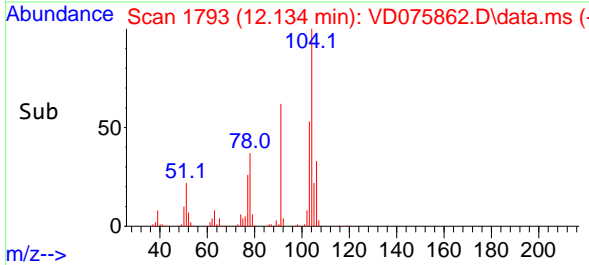
Tgt Ion:106 Resp: 175228  
 Ion Ratio Lower Upper  
 106 100  
 91 194.3 139.8 259.6



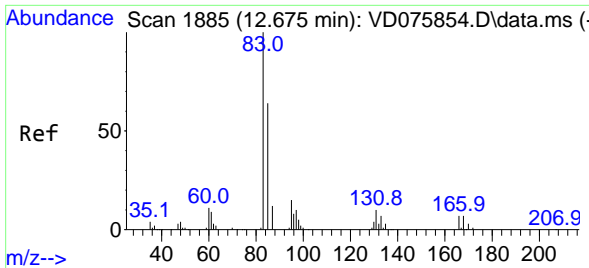
#55  
 Styrene  
 Concen: 24.033 ug/L  
 RT: 12.134 min Scan# 1793  
 Delta R.T. -0.000 min  
 Lab File: VD075862.D  
 Acq: 27 Apr 2023 15:38



Tgt Ion:104 Resp: 298492  
 Ion Ratio Lower Upper  
 104 100  
 78 36.9 26.2 48.6

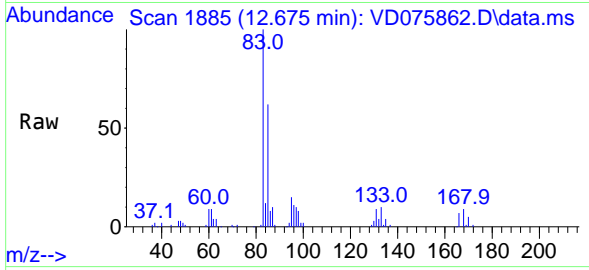




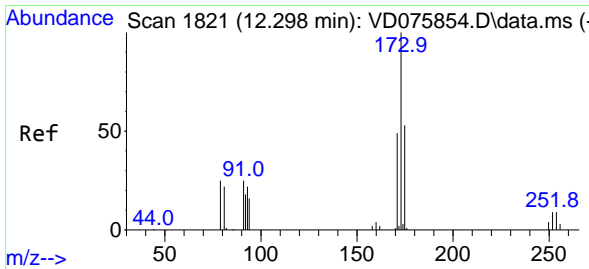
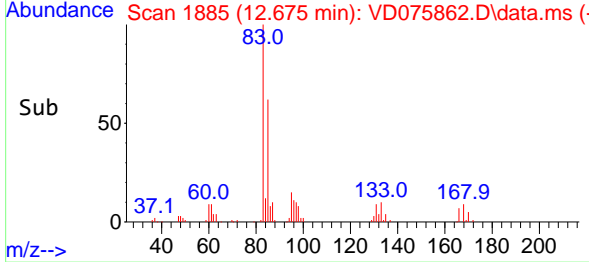
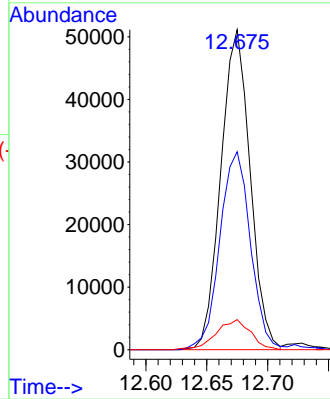


#57  
 1,1,2-Tetrachloroethane  
 Concen: 25.335 ug/L  
 RT: 12.675 min Scan# 1885  
 Delta R.T. -0.000 min  
 Lab File: VD075862.D  
 Acq: 27 Apr 2023 15:38

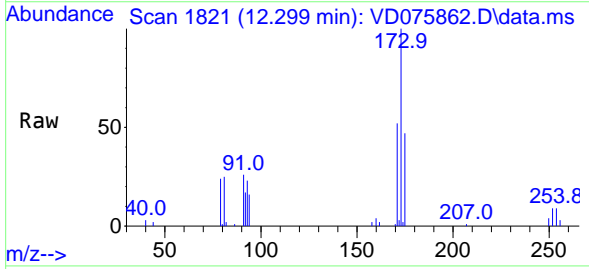
Instrument : MSVOA\_D  
 ClientSampleId : EW937MSD



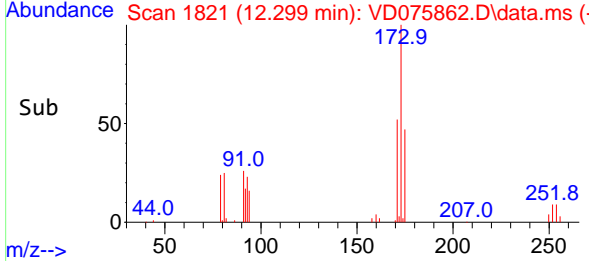
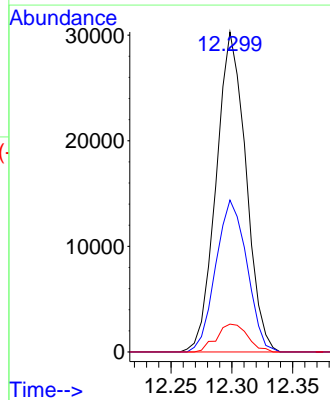
Tgt Ion: 83 Resp: 85655  
 Ion Ratio Lower Upper  
 83 100  
 85 61.9 45.1 83.7  
 131 9.4 7.0 10.6

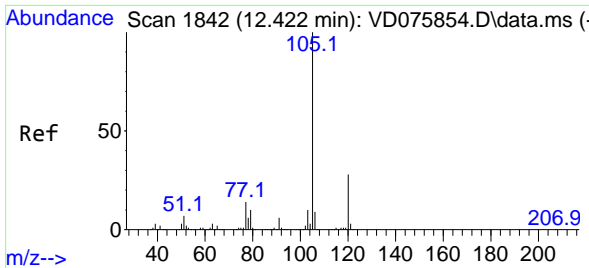


#59  
 Bromoform  
 Concen: 35.543 ug/L  
 RT: 12.299 min Scan# 1821  
 Delta R.T. -0.000 min  
 Lab File: VD075862.D  
 Acq: 27 Apr 2023 15:38



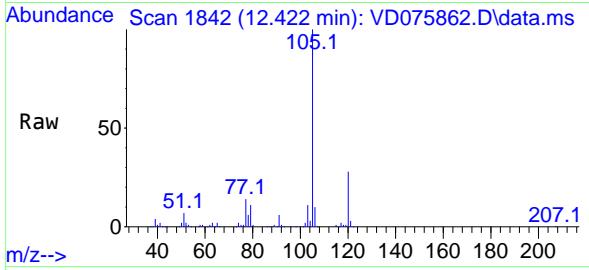
Tgt Ion: 173 Resp: 51479  
 Ion Ratio Lower Upper  
 173 100  
 175 49.7 39.4 59.0  
 254 9.1 7.4 11.2



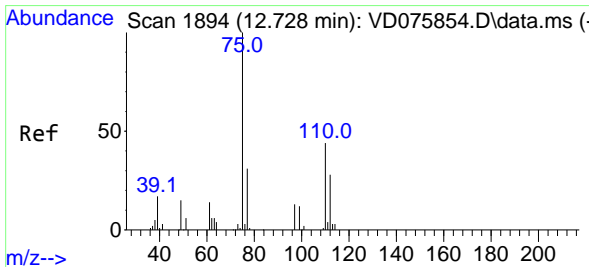
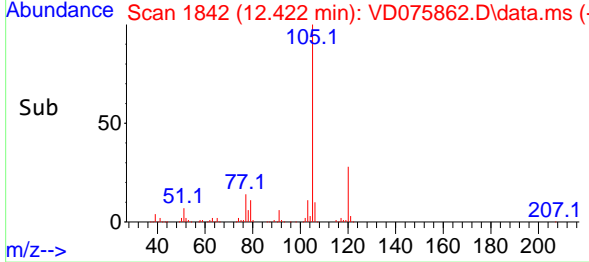
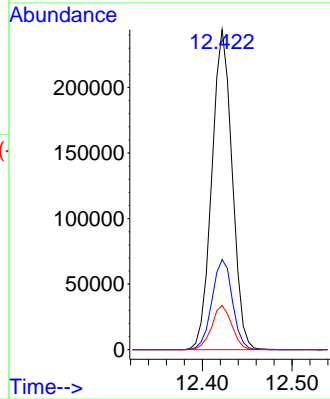


#60  
 Isopropylbenzene  
 Concen: 30.618 ug/L  
 RT: 12.422 min Scan# 1842  
 Delta R.T. -0.000 min  
 Lab File: VD075862.D  
 Acq: 27 Apr 2023 15:38

Instrument : MSVOA\_D  
 ClientSampleId : EW937MSD

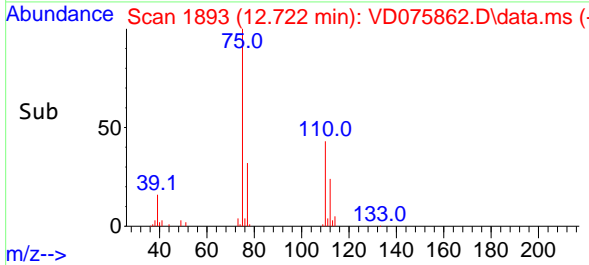
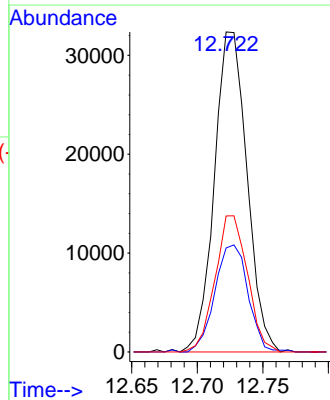
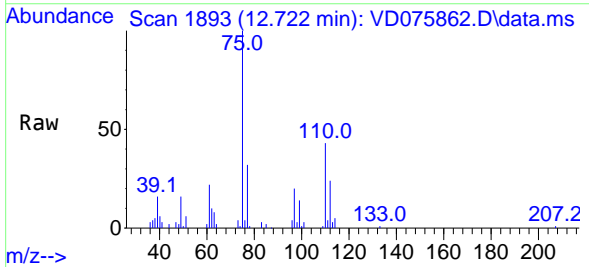


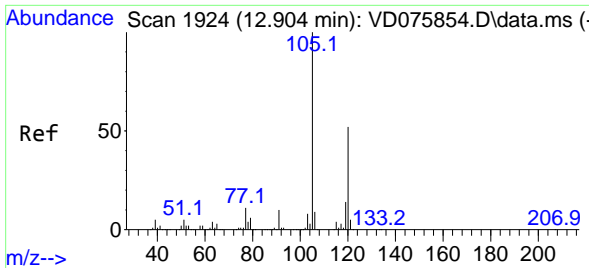
Tgt Ion:105 Resp: 383664  
 Ion Ratio Lower Upper  
 105 100  
 120 28.3 22.7 34.1  
 77 13.7 10.9 16.3



#61  
 1,2,3-Trichloropropane  
 Concen: 37.675 ug/L  
 RT: 12.722 min Scan# 1893  
 Delta R.T. -0.006 min  
 Lab File: VD075862.D  
 Acq: 27 Apr 2023 15:38

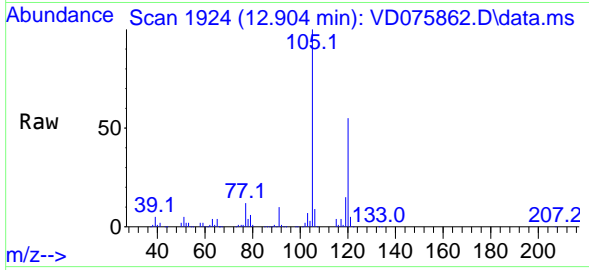
Tgt Ion: 75 Resp: 55929  
 Ion Ratio Lower Upper  
 75 100  
 77 34.0 26.6 39.8  
 110 42.3 33.5 50.3



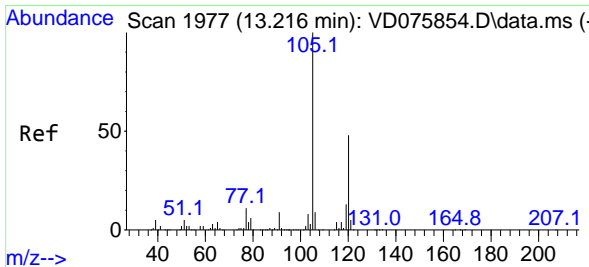
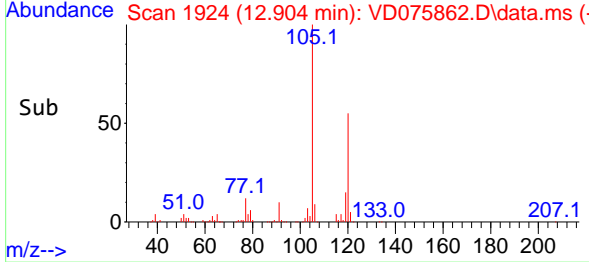
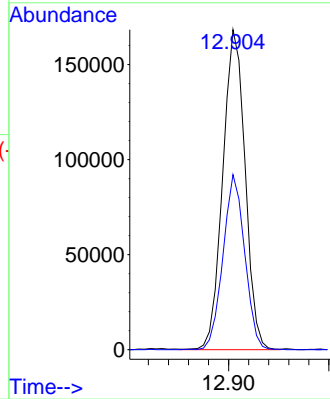


#62  
 1,3,5-Trimethylbenzene  
 Concen: 27.853 ug/L  
 RT: 12.904 min Scan# 1924  
 Delta R.T. -0.000 min  
 Lab File: VD075862.D  
 Acq: 27 Apr 2023 15:38

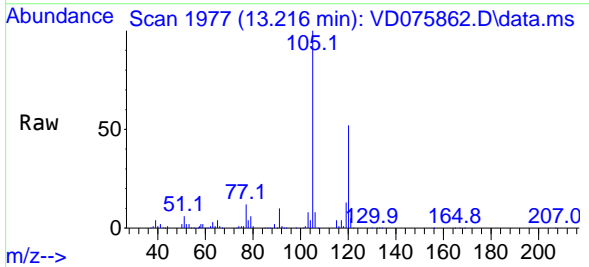
Instrument : MSVOA\_D  
 ClientSampleId : EW937MSD



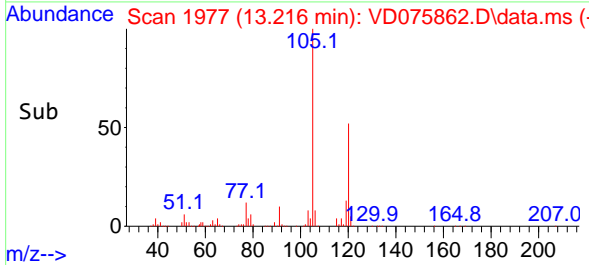
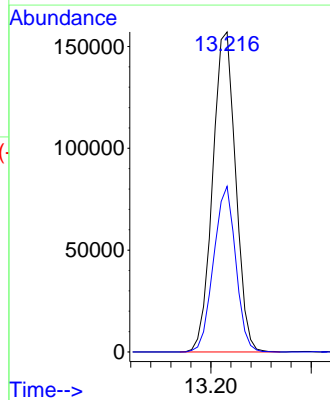
Tgt Ion:105 Resp: 260256  
 Ion Ratio Lower Upper  
 105 100  
 120 53.1 42.0 63.0

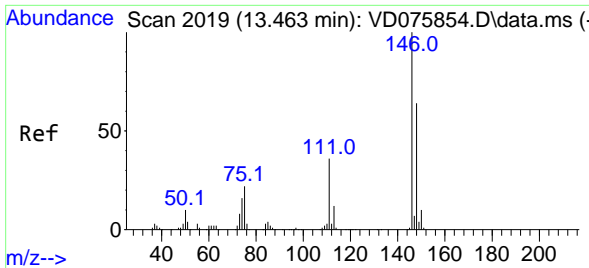


#63  
 1,2,4-Trimethylbenzene  
 Concen: 27.706 ug/L  
 RT: 13.216 min Scan# 1977  
 Delta R.T. -0.000 min  
 Lab File: VD075862.D  
 Acq: 27 Apr 2023 15:38



Tgt Ion:105 Resp: 249550  
 Ion Ratio Lower Upper  
 105 100  
 120 49.8 39.0 58.6

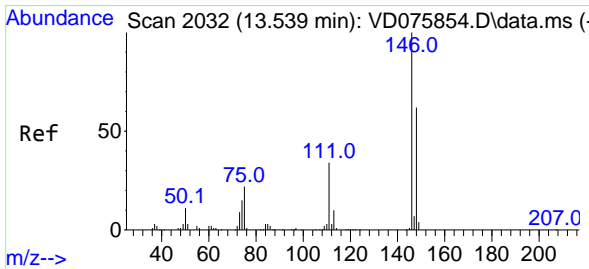
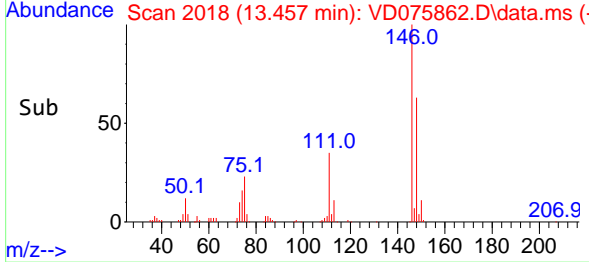
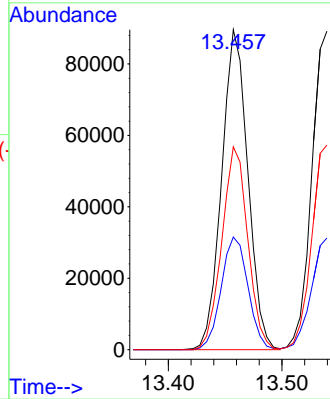
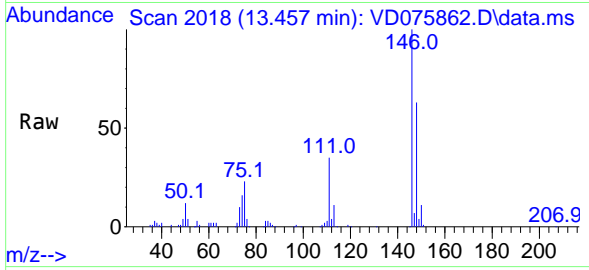




#64  
 1,3-Dichlorobenzene  
 Concen: 23.923 ug/L  
 RT: 13.457 min Scan# 2019  
 Delta R.T. -0.000 min  
 Lab File: VD075862.D  
 Acq: 27 Apr 2023 15:38

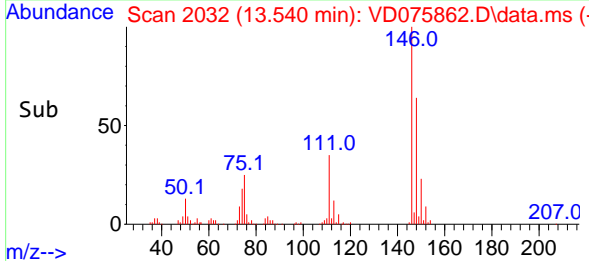
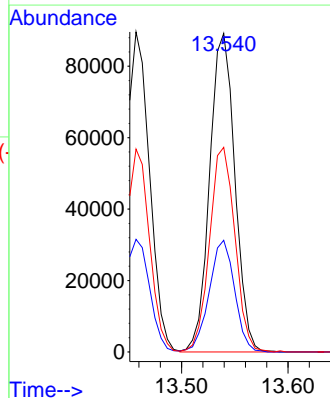
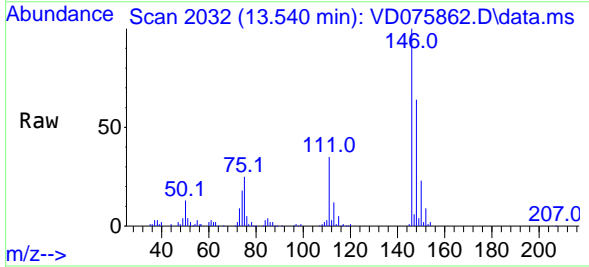
Instrument :  
 MSVOA\_D  
 ClientSampleId :  
 EW937MSD

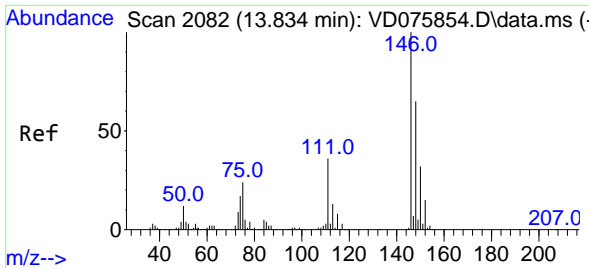
Tgt Ion:146 Resp: 143434  
 Ion Ratio Lower Upper  
 146 100  
 111 35.2 26.5 49.1  
 148 63.4 43.8 81.3



#65  
 1,4-Dichlorobenzene  
 Concen: 23.300 ug/L  
 RT: 13.540 min Scan# 2032  
 Delta R.T. -0.000 min  
 Lab File: VD075862.D  
 Acq: 27 Apr 2023 15:38

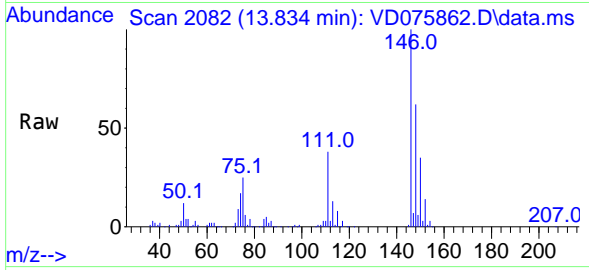
Tgt Ion:146 Resp: 146613  
 Ion Ratio Lower Upper  
 146 100  
 111 35.1 24.6 45.8  
 148 64.2 44.4 82.4



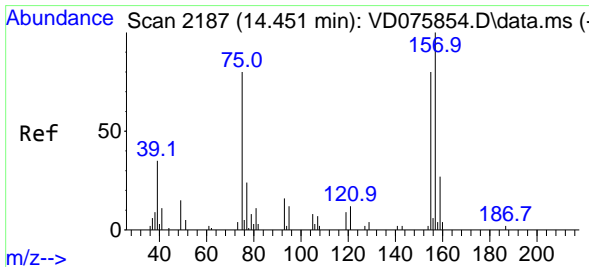
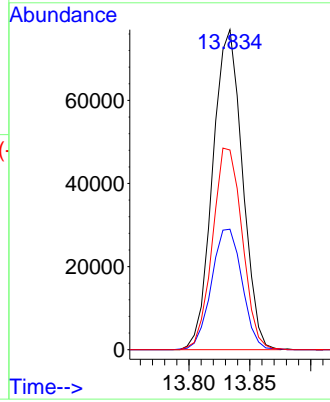
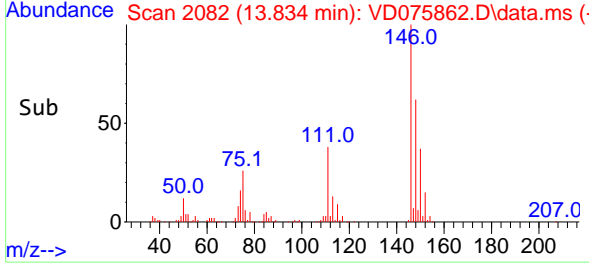


#67  
 1,2-Dichlorobenzene  
 Concen: 24.418 ug/L  
 RT: 13.834 min Scan# 2082  
 Delta R.T. -0.000 min  
 Lab File: VD075862.D  
 Acq: 27 Apr 2023 15:38

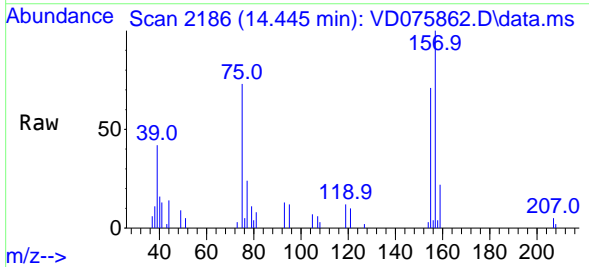
Instrument : MSVOA\_D  
 ClientSampleId : EW937MSD



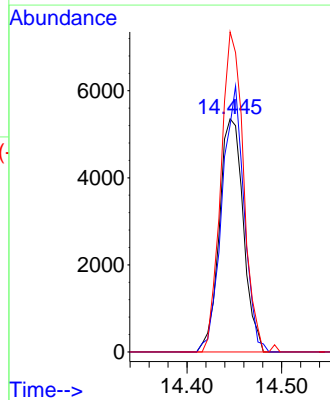
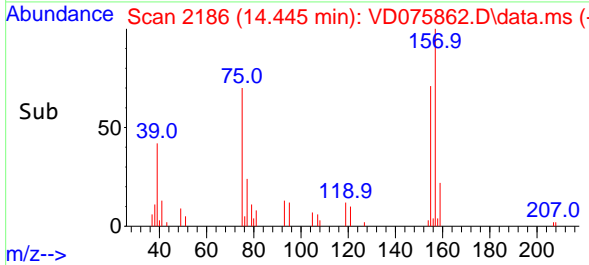
Tgt Ion:146 Resp: 130738  
 Ion Ratio Lower Upper  
 146 100  
 111 37.7 30.6 46.0  
 148 62.4 51.4 77.0

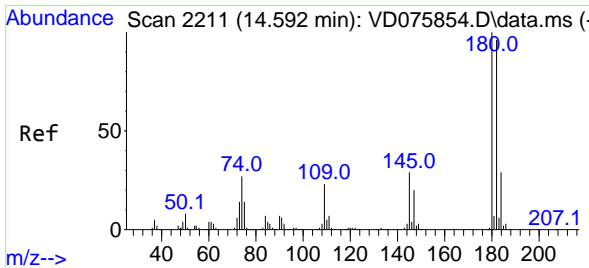


#68  
 1,2-Dibromo-3-chloropropane  
 Concen: 31.775 ug/L  
 RT: 14.445 min Scan# 2186  
 Delta R.T. -0.006 min  
 Lab File: VD075862.D  
 Acq: 27 Apr 2023 15:38



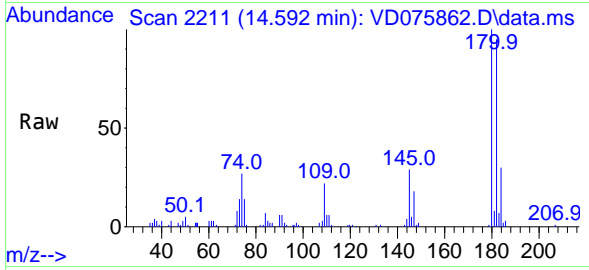
Tgt Ion: 75 Resp: 9430  
 Ion Ratio Lower Upper  
 75 100  
 155 97.4 74.6 111.8  
 157 137.3 109.4 164.2





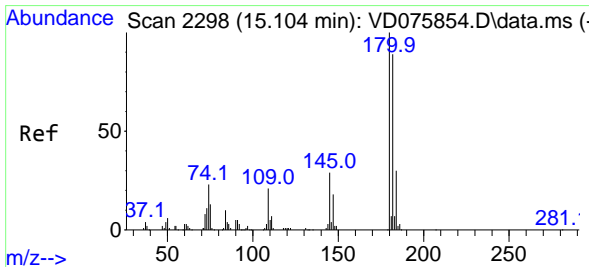
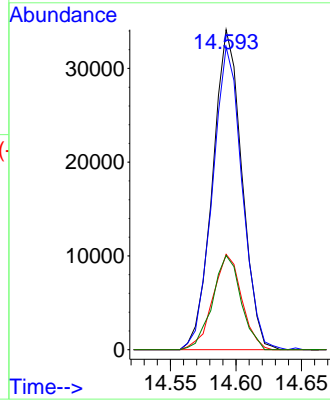
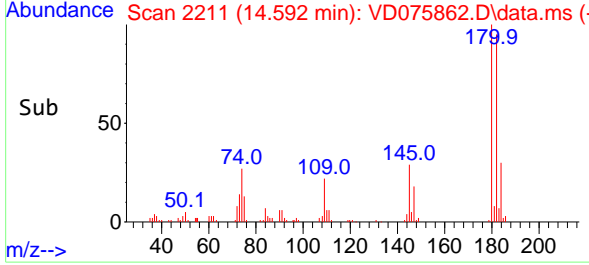
#69  
 1,3,5-Trichlorobenzene  
 Concen: 13.207 ug/L  
 RT: 14.592 min Scan# 211  
 Delta R.T. -0.000 min  
 Lab File: VD075862.D  
 Acq: 27 Apr 2023 15:38

Instrument : MSVOA\_D  
 ClientSampleId : EW937MSD

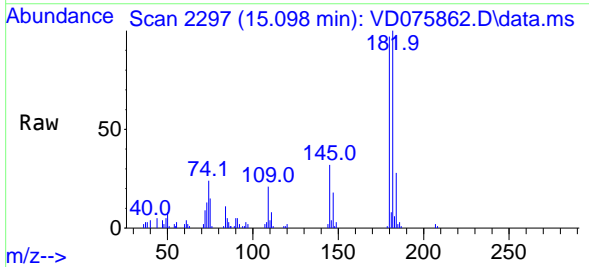


Tgt Ion:180 Resp: 53074

Ion	Ratio	Lower	Upper
180	100		
182	95.7	74.9	112.3
184	29.2	25.0	37.4
145	28.5	22.8	34.2

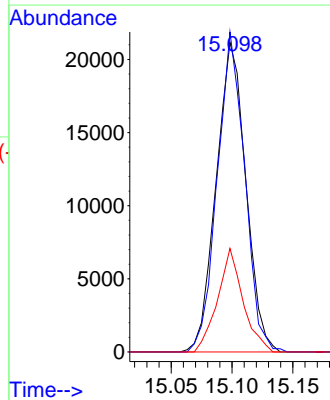
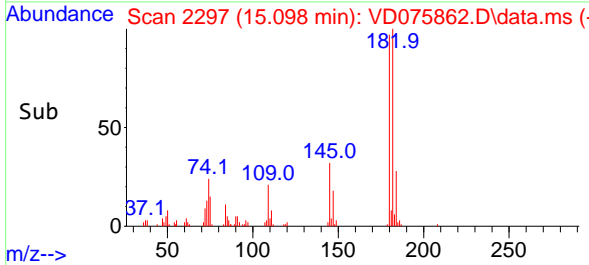


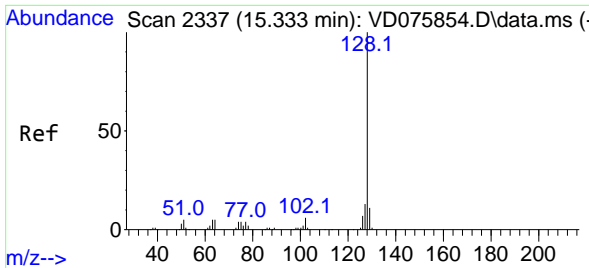
#70  
 1,2,4-trichlorobenzene  
 Concen: 10.771 ug/L  
 RT: 15.098 min Scan# 2297  
 Delta R.T. -0.006 min  
 Lab File: VD075862.D  
 Acq: 27 Apr 2023 15:38



Tgt Ion:180 Resp: 35872

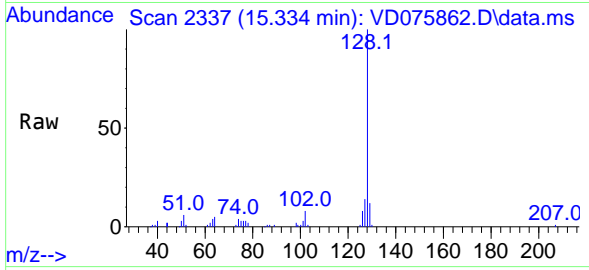
Ion	Ratio	Lower	Upper
180	100		
182	95.4	75.4	113.2
145	28.6	23.6	35.4





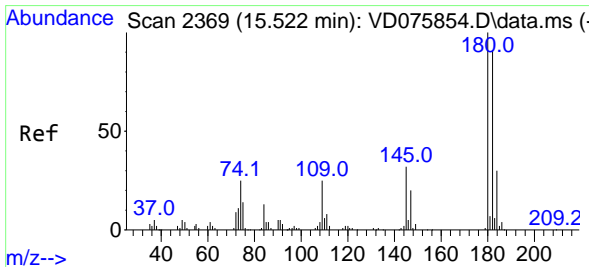
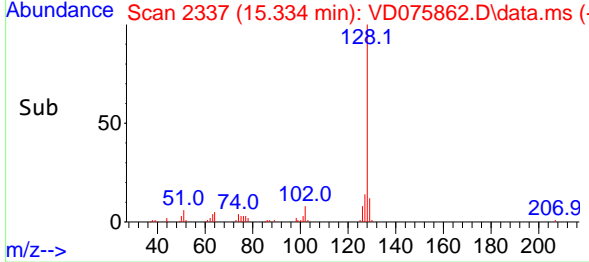
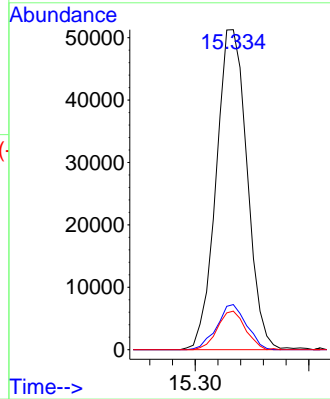
#71  
 Naphthalene  
 Concen: 15.896 ug/L  
 RT: 15.334 min Scan# 21  
 Delta R.T. -0.000 min  
 Lab File: VD075862.D  
 Acq: 27 Apr 2023 15:38

Instrument : MSVOA\_D  
 ClientSampleId : EW937MSD



Tgt Ion:128 Resp: 96878

Ion	Ratio	Lower	Upper
128	100		
127	13.5	10.5	15.7
129	10.9	9.1	13.7



#72  
 1,2,3-Trichlorobenzene  
 Concen: 10.805 ug/L  
 RT: 15.522 min Scan# 2369  
 Delta R.T. -0.000 min  
 Lab File: VD075862.D  
 Acq: 27 Apr 2023 15:38

Tgt Ion:180 Resp: 32120

Ion	Ratio	Lower	Upper
180	100		
182	92.1	76.3	114.5
145	30.2	25.0	37.6

