

Data Path : Z:\voasrv\HPCHEM1\MSVOA_D\Data\VD050423\
 Data File : VD075997.D
 Acq On : 04 May 2023 11:39
 Operator : KP/SY
 Sample : 02593-12
 Misc : 5.91G/10.00ml/MSVOA_D/SOIL
 ALS Vial : 4 Sample Multiplier: 1

Instrument :
 MSVOA_D
 ClientSampleId :
 DCCP6

Quant Time: May 05 00:47:52 2023
 Quant Method : Z:\voasrv\HPCHEM1\MSVOA_D\Method\SFAMDLM042023SMA.M
 Quant Title : SFAM01.0
 QLast Update : Fri May 05 00:35:29 2023
 Response via : Initial Calibration

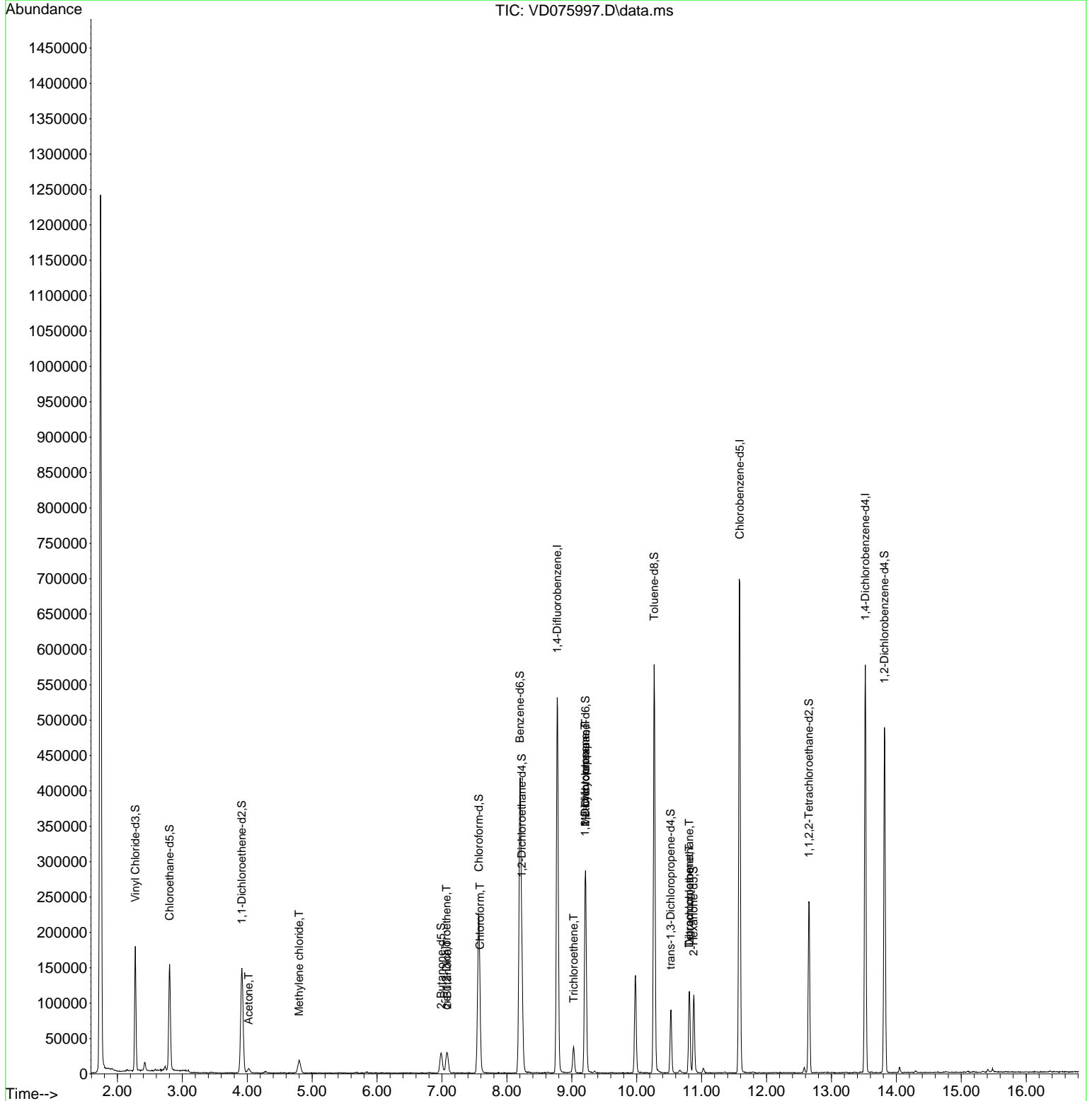
Compound	R.T.	QIon	Response	Conc	Units	Dev(Min)
Internal Standards						
1) 1,4-Difluorobenzene	8.775	114	520664	25.000	ug/L	0.00
28) Chlorobenzene-d5	11.587	117	459718	25.000	ug/L	0.00
58) 1,4-Dichlorobenzene-d4	13.522	152	171772	25.000	ug/L	0.00
System Monitoring Compounds						
4) Vinyl Chloride-d3	2.275	65	165797	14.516	ug/L	0.00
Spiked Amount	25.000	Range 30 - 150	Recovery =	58.080%		
7) Chloroethane-d5	2.805	69	160776	16.291	ug/L	0.00
Spiked Amount	25.000	Range 30 - 150	Recovery =	65.160%		
11) 1,1-Dichloroethene-d2	3.917	65	41146	15.625	ug/L	0.00
Spiked Amount	25.000	Range 45 - 110	Recovery =	62.520%		
21) 2-Butanone-d5	6.987	46	48487	48.899	ug/L	0.00
Spiked Amount	50.000	Range 20 - 135	Recovery =	97.800%		
24) Chloroform-d	7.569	84	248320	19.072	ug/L	0.00
Spiked Amount	25.000	Range 40 - 150	Recovery =	76.280%		
26) 1,2-Dichloroethane-d4	8.228	65	107390	19.314	ug/L	0.00
Spiked Amount	25.000	Range 70 - 130	Recovery =	77.240%		
32) Benzene-d6	8.199	84	468206	17.474	ug/L	0.00
Spiked Amount	25.000	Range 20 - 135	Recovery =	69.880%		
36) 1,2-Dichloropropane-d6	9.210	67	155151	20.920	ug/L	0.00
Spiked Amount	25.000	Range 70 - 120	Recovery =	83.680%		
41) Toluene-d8	10.269	98	417682	16.651	ug/L	0.00
Spiked Amount	25.000	Range 30 - 130	Recovery =	66.600%		
43) trans-1,3-Dichloroprop...	10.522	79	54885	17.904	ug/L	0.00
Spiked Amount	25.000	Range 30 - 135	Recovery =	71.600%		
47) 2-Hexanone-d5	10.875	63	39748	44.511	ug/L	0.00
Spiked Amount	50.000	Range 20 - 135	Recovery =	89.020%		
56) 1,1,2,2-Tetrachloroeth...	12.651	84	130927	23.070	ug/L	0.00
Spiked Amount	25.000	Range 45 - 120	Recovery =	92.280%		
66) 1,2-Dichlorobenzene-d4	13.816	152	144810	23.834	ug/L	0.00
Spiked Amount	25.000	Range 75 - 120	Recovery =	95.320%		
Target Compounds						
13) Acetone	4.022	43	9184	10.823	ug/L	96
16) Methylene chloride	4.799	84	14871	1.408	ug/L	93
20) cis-1,2-Dichloroethene	7.069	96	21693	2.673	ug/L	88
22) 2-Butanone	7.081	43	1362	1.231	ug/L	79
25) Chloroform	7.587	83	4534	0.360	ug/L	100
34) Trichloroethene	9.028	95	12499	1.738	ug/L	95
35) Methylcyclohexane	9.210	83	37121	3.348	ug/L #	25
37) 1,2-Dichloropropane	9.205	63	15161	2.373	ug/L #	85
46) Tetrachloroethene	10.810	164	30131	5.108	ug/L	93
49) Dibromochloromethane	10.810	129	24356	4.117	ug/L #	10

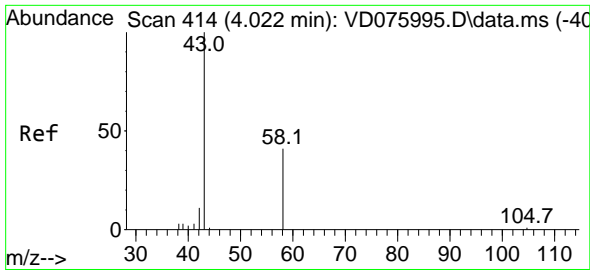
(#) = qualifier out of range (m) = manual integration (+) = signals summed

Data Path : Z:\voasrv\HPCHEM1\MSVOA_D\Data\VD050423\
 Data File : VD075997.D
 Acq On : 04 May 2023 11:39
 Operator : KP/SY
 Sample : 02593-12
 Misc : 5.91G/10.00ml/MSVOA_D/SOIL
 ALS Vial : 4 Sample Multiplier: 1

Instrument :
 MSVOA_D
 ClientSampleId :
 DCCP6

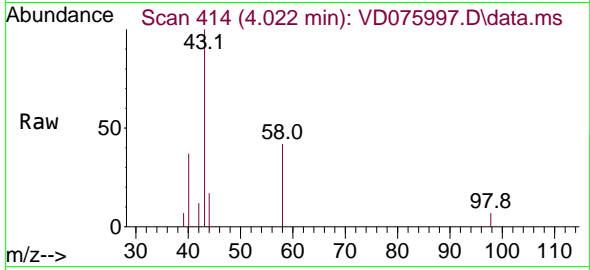
Quant Time: May 05 00:47:52 2023
 Quant Method : Z:\voasrv\HPCHEM1\MSVOA_D\Method\SFAMDLM042023SMA.M
 Quant Title : SFAM01.0
 QLast Update : Fri May 05 00:35:29 2023
 Response via : Initial Calibration



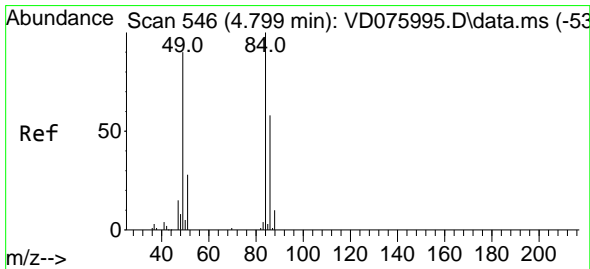
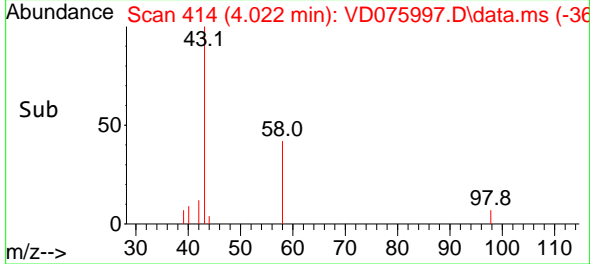
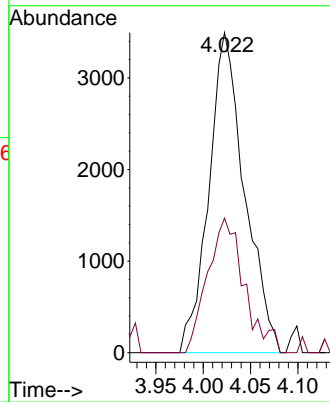


#13
 Acetone
 Concen: 10.823 ug/L
 RT: 4.022 min Scan# 411
 Delta R.T. 0.000 min
 Lab File: VD075997.D
 Acq: 04 May 2023 11:39

Instrument : MSVOA_D
 ClientSampleId : DCCP6

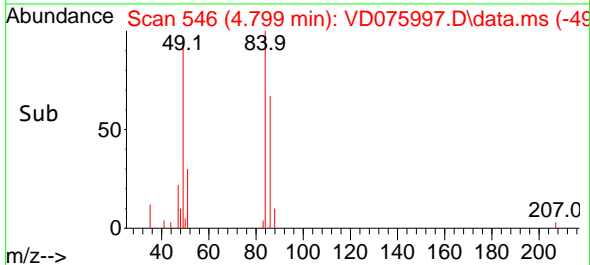
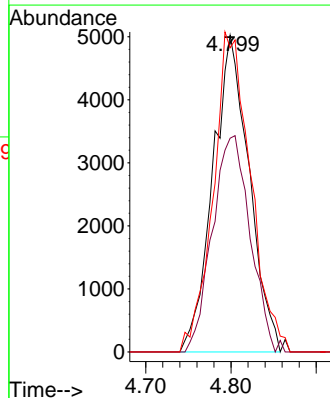
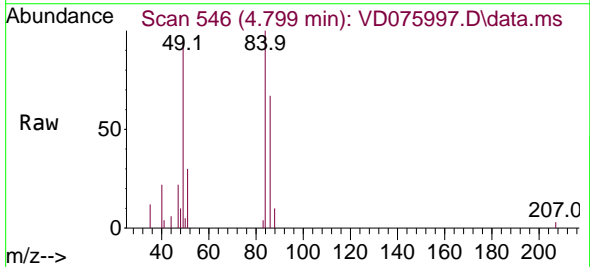


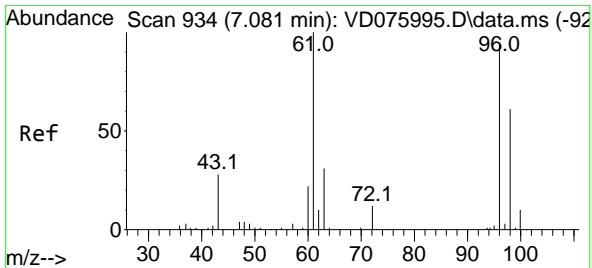
Tgt Ion: 43 Resp: 9184
 Ion Ratio Lower Upper
 43 100
 58 41.2 0.0 87.4



#16
 Methylene chloride
 Concen: 1.408 ug/L
 RT: 4.799 min Scan# 546
 Delta R.T. 0.000 min
 Lab File: VD075997.D
 Acq: 04 May 2023 11:39

Tgt Ion: 84 Resp: 14871
 Ion Ratio Lower Upper
 84 100
 86 67.5 45.8 85.2
 49 96.1 60.8 112.8



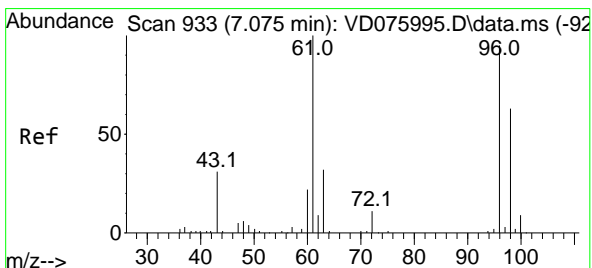
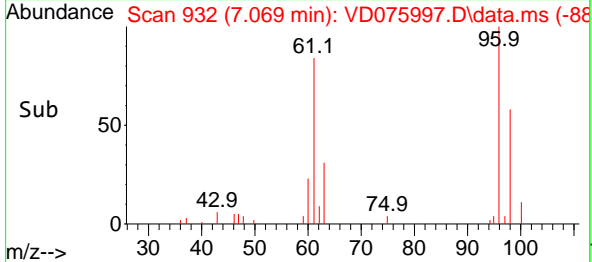
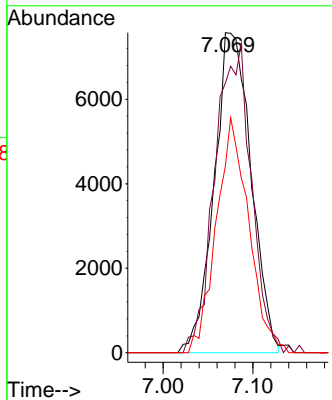
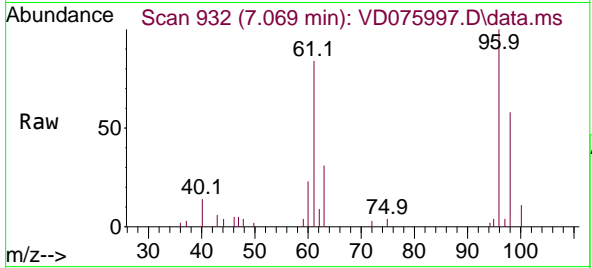


#20
 cis-1,2-Dichloroethene
 Concen: 2.673 ug/L
 RT: 7.069 min Scan# 91
 Delta R.T. -0.012 min
 Lab File: VD075997.D
 Acq: 04 May 2023 11:39

Instrument : MSVOA_D
 ClientSampleId : DCCP6

Tgt Ion: 96 Resp: 21693

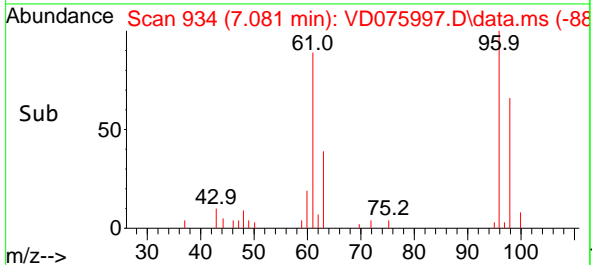
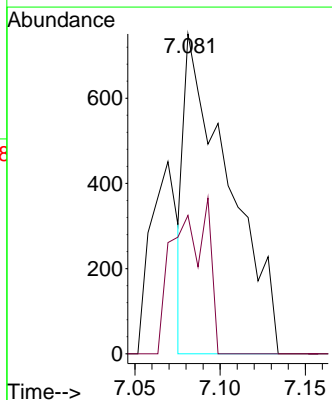
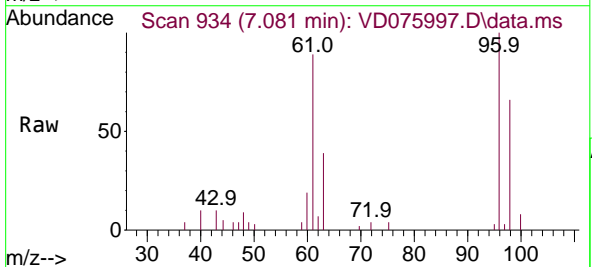
Ion	Ratio	Lower	Upper
96	100		
61	84.2	67.5	125.3
98	58.3	47.5	88.1

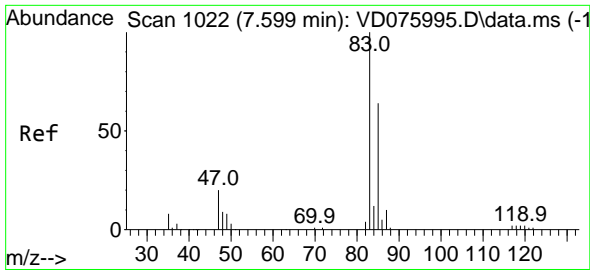


#22
 2-Butanone
 Concen: 1.231 ug/L
 RT: 7.081 min Scan# 934
 Delta R.T. 0.006 min
 Lab File: VD075997.D
 Acq: 04 May 2023 11:39

Tgt Ion: 43 Resp: 1362

Ion	Ratio	Lower	Upper
43	100		
72	27.6	20.5	61.5

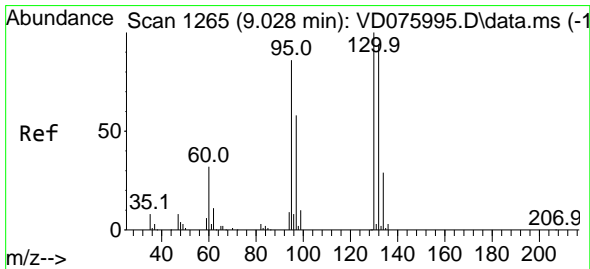
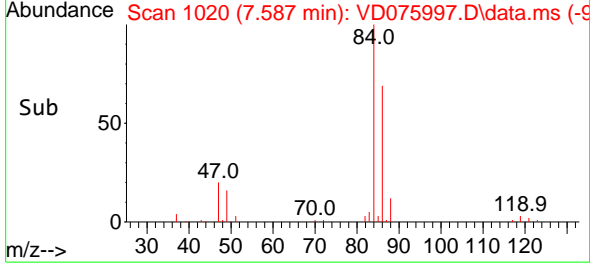
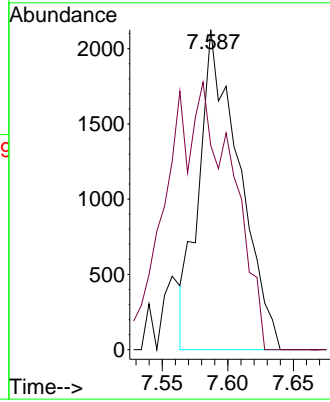
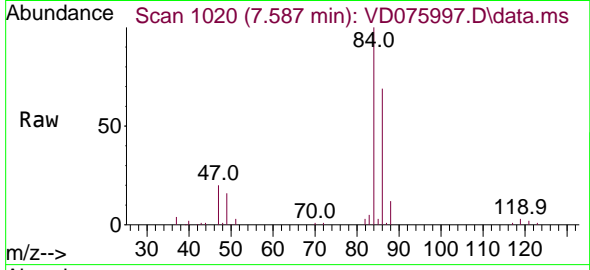




#25
 Chloroform
 Concen: 0.360 ug/L
 RT: 7.587 min Scan# 1020
 Delta R.T. -0.012 min
 Lab File: VD075997.D
 Acq: 04 May 2023 11:39

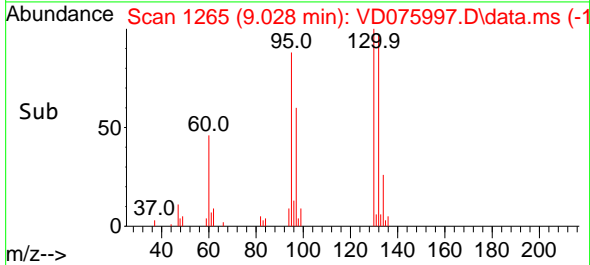
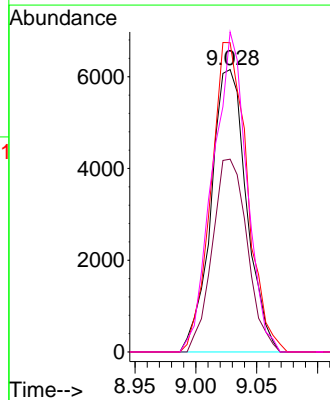
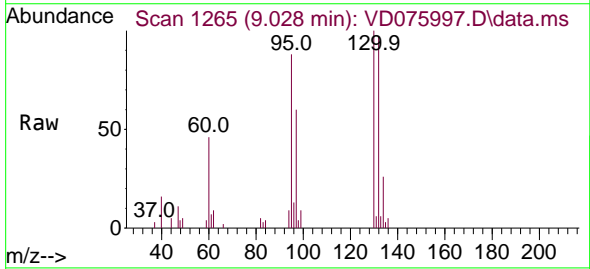
Instrument : MSVOA_D
 ClientSampleId : DCCP6

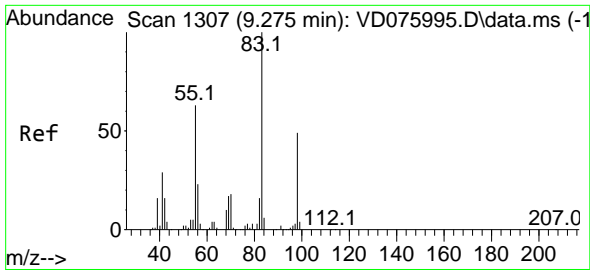
Tgt Ion: 83 Resp: 4534
 Ion Ratio Lower Upper
 83 100
 85 63.8 44.4 82.5



#34
 Trichloroethene
 Concen: 1.738 ug/L
 RT: 9.028 min Scan# 1265
 Delta R.T. 0.000 min
 Lab File: VD075997.D
 Acq: 04 May 2023 11:39

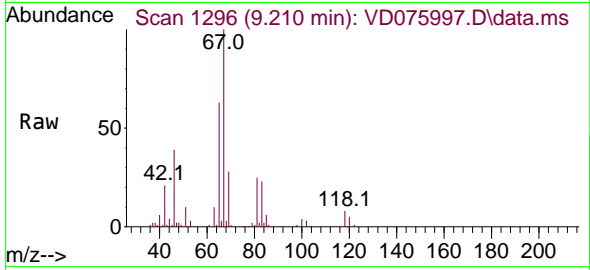
Tgt Ion: 95 Resp: 12499
 Ion Ratio Lower Upper
 95 100
 97 68.3 46.0 85.4
 132 109.5 73.3 136.1
 130 113.3 75.3 139.9



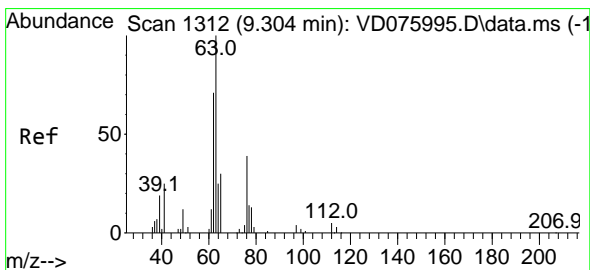
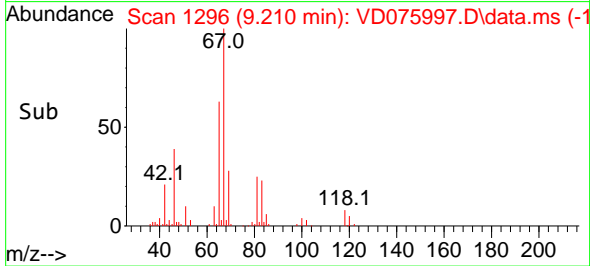
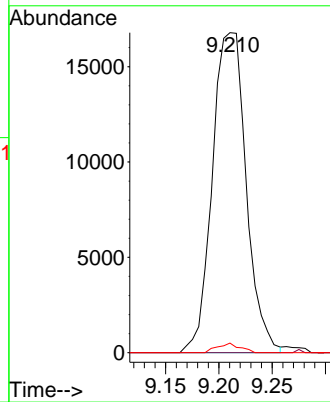


#35
 Methylcyclohexane
 Concen: 3.348 ug/L
 RT: 9.210 min Scan# 1296
 Delta R.T. -0.065 min
 Lab File: VD075997.D
 Acq: 04 May 2023 11:39

Instrument : MSVOA_D
 ClientSampleId : DCCP6

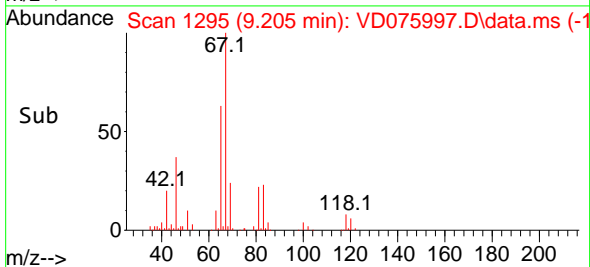
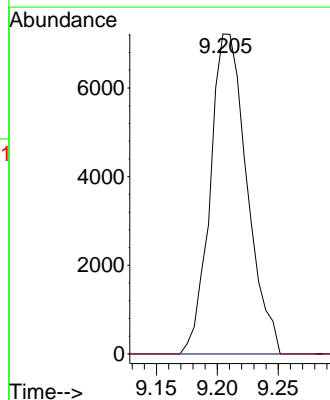
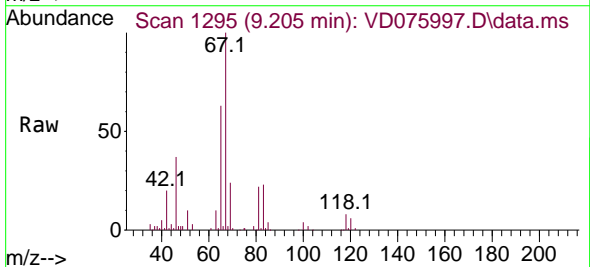


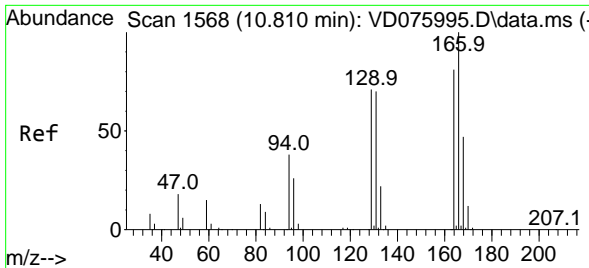
Tgt Ion: 83 Resp: 37121
 Ion Ratio Lower Upper
 83 100
 55 0.0 48.2 72.2#
 98 2.0 40.8 61.2#



#37
 1,2-Dichloropropane
 Concen: 2.373 ug/L
 RT: 9.205 min Scan# 1295
 Delta R.T. -0.100 min
 Lab File: VD075997.D
 Acq: 04 May 2023 11:39

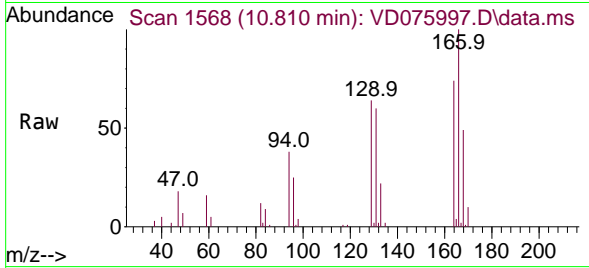
Tgt Ion: 63 Resp: 15161
 Ion Ratio Lower Upper
 63 100
 112 0.0 4.0 6.0#



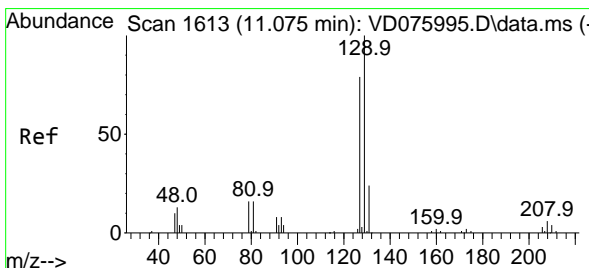
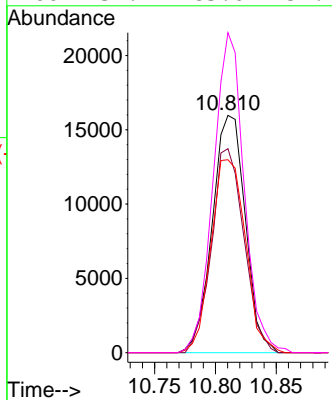
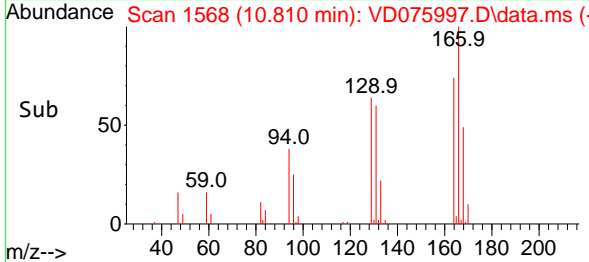


#46
 Tetrachloroethene
 Concen: 5.108 ug/L
 RT: 10.810 min Scan# 1568
 Delta R.T. 0.000 min
 Lab File: VD075997.D
 Acq: 04 May 2023 11:39

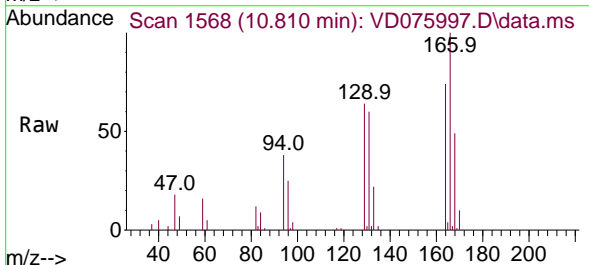
Instrument : MSVOA_D
 ClientSampleId : DCCP6



Tgt Ion:164 Resp: 30131
 Ion Ratio Lower Upper
 164 100
 129 86.0 60.3 112.1
 131 81.3 58.9 109.3
 166 134.9 83.0 154.1



#49
 Dibromochloromethane
 Concen: 4.117 ug/L
 RT: 10.810 min Scan# 1568
 Delta R.T. -0.265 min
 Lab File: VD075997.D
 Acq: 04 May 2023 11:39



Tgt Ion:129 Resp: 24356
 Ion Ratio Lower Upper
 129 100
 127 0.0 55.6 103.4#

