

Data Path : Z:\voasrv\HPCHEM1\MSVOA_D\Data\VD050622\
 Data File : VD072852.D
 Acq On : 06 May 2022 15:31
 Operator : VA/SY
 Sample : N2648-01
 Misc : 5.07G/5.00ml/MSVOA_D/SOIL
 ALS Vial : 11 Sample Multiplier: 1

Instrument :
 MSVOA_D
 ClientSampleId :
 RBR-346

Quant Time: May 07 00:04:35 2022
 Quant Method : Z:\voasrv\HPCHEM1\MSVOA_D\Method\82D050222S.M
 Quant Title : SW846 8260
 QLast Update : Tue May 03 08:33:49 2022
 Response via : Initial Calibration

Compound	R.T.	QIon	Response	Conc	Units	Dev(Min)

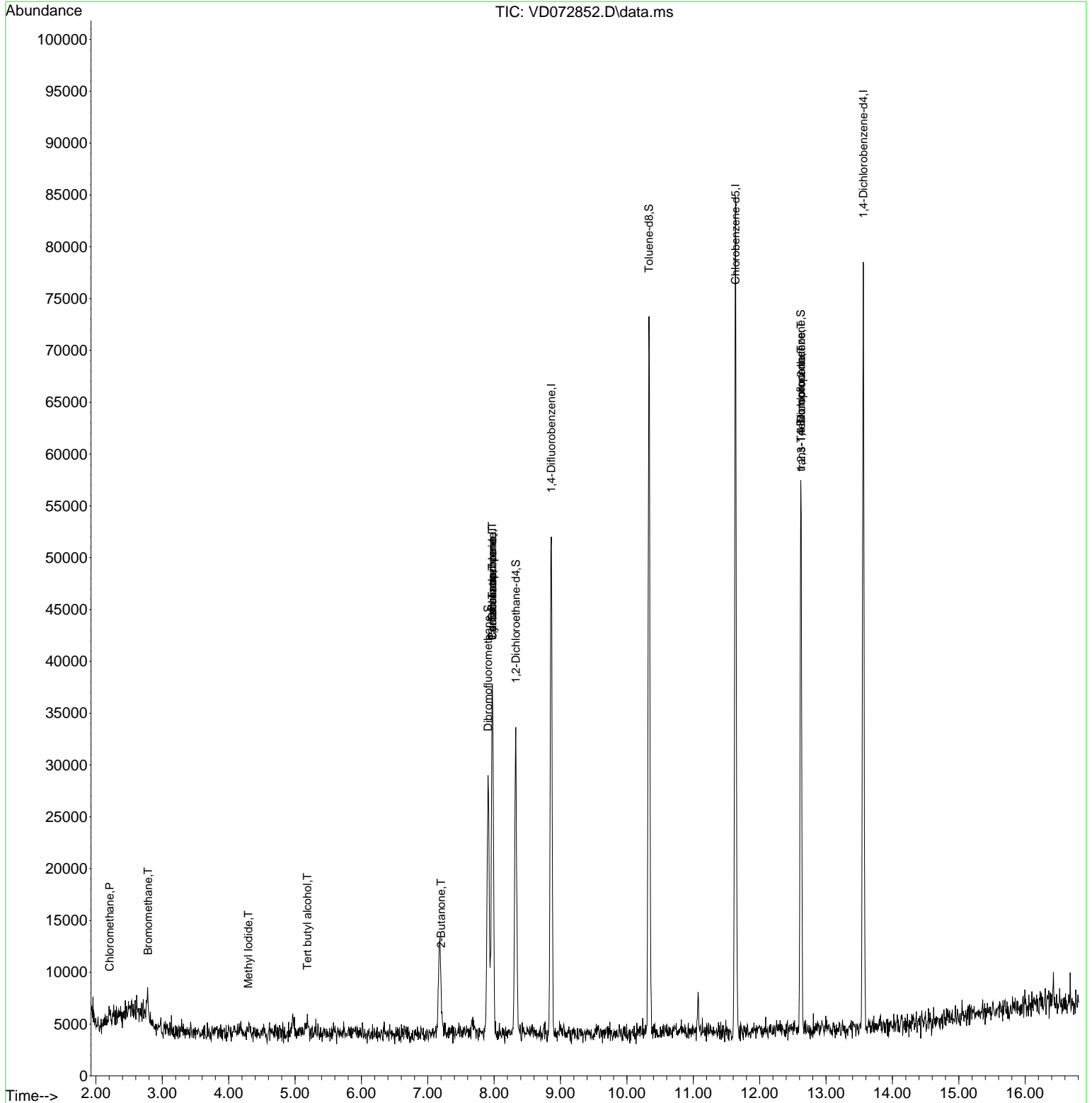
Internal Standards						
1) Pentafluorobenzene	7.973	168	25059	50.000	ug/l	0.00
34) 1,4-Difluorobenzene	8.861	114	39222	50.000	ug/l	0.00
63) Chlorobenzene-d5	11.637	117	43515	50.000	ug/l	0.00
72) 1,4-Dichlorobenzene-d4	13.561	152	19265	50.000	ug/l	0.00
System Monitoring Compounds						
33) 1,2-Dichloroethane-d4	8.326	65	21935	67.433	ug/l	0.00
Spiked Amount	50.000	Range	50 - 163	Recovery	=	134.860%
35) Dibromofluoromethane	7.908	113	17408	63.196	ug/l	0.00
Spiked Amount	50.000	Range	54 - 147	Recovery	=	126.400%
50) Toluene-d8	10.332	98	46961	47.526	ug/l	0.00
Spiked Amount	50.000	Range	49 - 140	Recovery	=	95.060%
62) 4-Bromofluorobenzene	12.620	95	18123	49.189	ug/l	0.00
Spiked Amount	50.000	Range	25 - 144	Recovery	=	98.380%
Target Compounds						
					Qvalue	
3) Chloromethane	2.209	50	505	1.402	ug/l	96
5) Bromomethane	2.785	94	1047	3.842	ug/l #	77
10) Methyl Iodide	4.297	142	733	2.174	ug/l #	91
11) Tert butyl alcohol	5.185	59	490	17.410	ug/l #	74
13) Acrolein	3.891	56	57	Below Cal	#	14
16) Acetone	4.150	43	591	Below Cal	#	47
20) Methylene Chloride	4.967	84	720	Below Cal	#	42
25) 2-Butanone	7.202	43	132	1.393	ug/l #	52
31) Cyclohexane	7.973	56	605	1.064	ug/l #	76
36) 1,1-Dichloropropene	7.973	75	2204	4.921	ug/l #	43
38) Carbon Tetrachloride	7.973	117	2825	6.076	ug/l #	13
76) 1,2,3-Trichloropropane	12.626	75	9145	42.571	ug/l #	100
81) trans-1,4-Dichloro-2-b...	12.626	75	9145	97.896	ug/l #	7

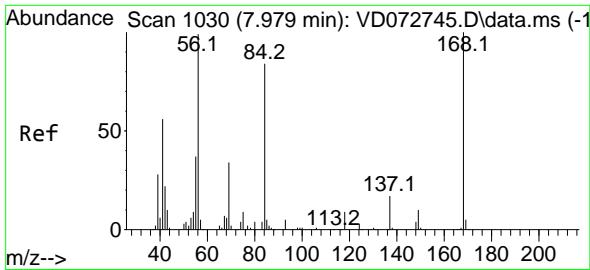
(#) = qualifier out of range (m) = manual integration (+) = signals summed

Data Path : Z:\voasrv\HPCHEM1\MSVOA_D\Data\VD050622\
 Data File : VD072852.D
 Acq On : 06 May 2022 15:31
 Operator : VA/SY
 Sample : N2648-01
 Misc : 5.07G/5.00ml/MSVOA_D/SOIL
 ALS Vial : 11 Sample Multiplier: 1

Instrument :
 MSVOA_D
 ClientSampleId :
 RBR-346

Quant Time: May 07 00:04:35 2022
 Quant Method : Z:\voasrv\HPCHEM1\MSVOA_D\Method\82D050222S.M
 Quant Title : SW846 8260
 QLast Update : Tue May 03 08:33:49 2022
 Response via : Initial Calibration

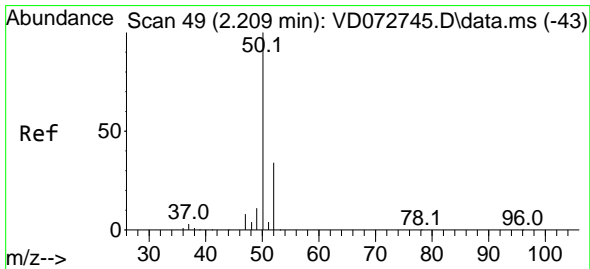
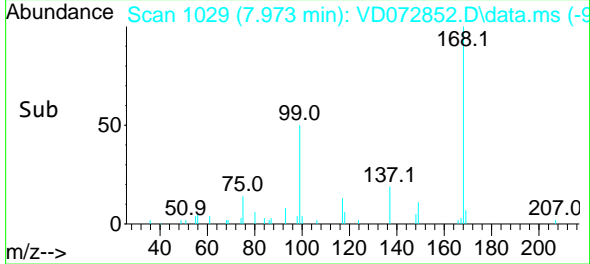
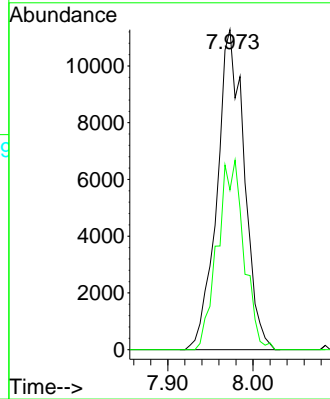
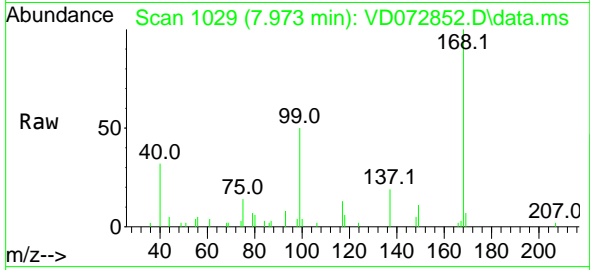




#1
 Pentafluorobenzene
 Concen: 50.000 ug/l
 RT: 7.973 min Scan# 10
 Delta R.T. -0.006 min
 Lab File: VD072852.D
 Acq: 06 May 2022 15:31

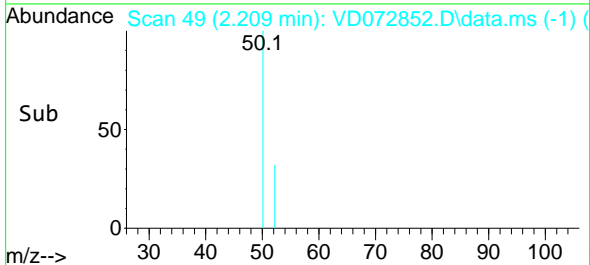
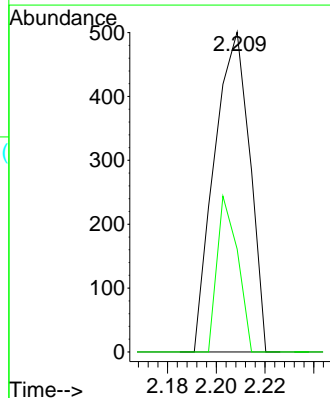
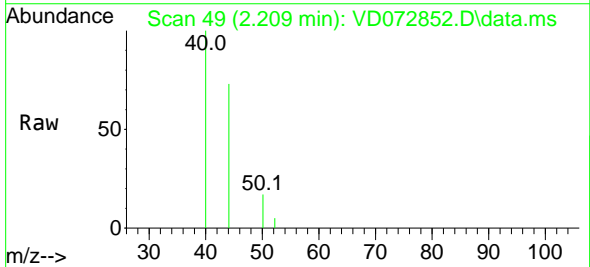
Instrument :
 MSVOA_D
 ClientSampleId :
 RBR-346

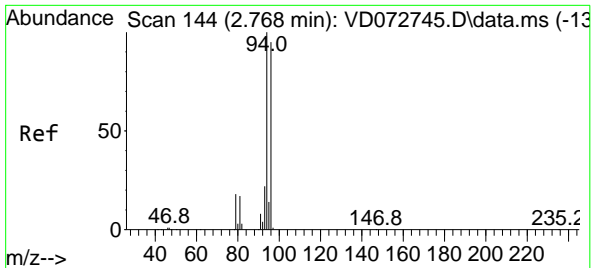
Tgt Ion:168 Resp: 25059
 Ion Ratio Lower Upper
 168 100
 99 49.9 49.8 74.6



#3
 Chloromethane
 Concen: 1.402 ug/l
 RT: 2.209 min Scan# 49
 Delta R.T. -0.000 min
 Lab File: VD072852.D
 Acq: 06 May 2022 15:31

Tgt Ion: 50 Resp: 505
 Ion Ratio Lower Upper
 50 100
 52 32.1 27.4 41.0

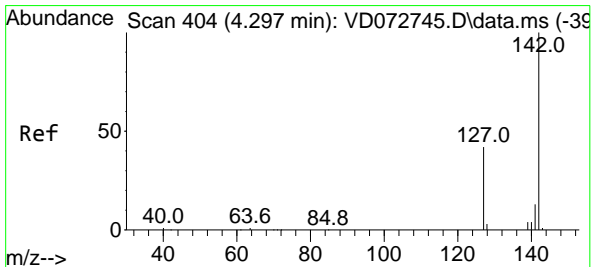
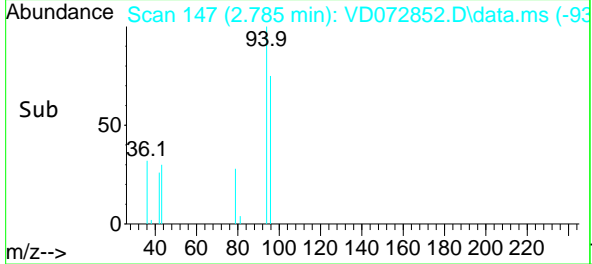
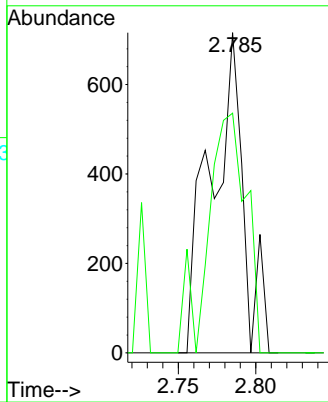
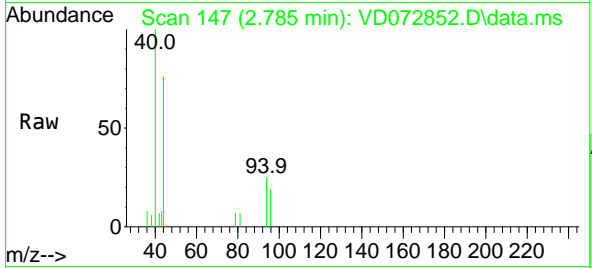




#5
 Bromomethane
 Concen: 3.842 ug/l
 RT: 2.785 min Scan# 147
 Delta R.T. 0.017 min
 Lab File: VD072852.D
 Acq: 06 May 2022 15:31

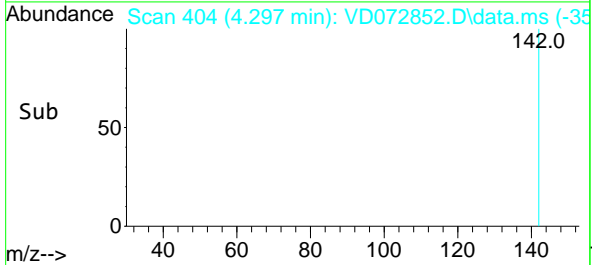
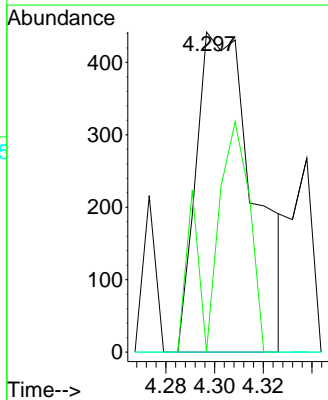
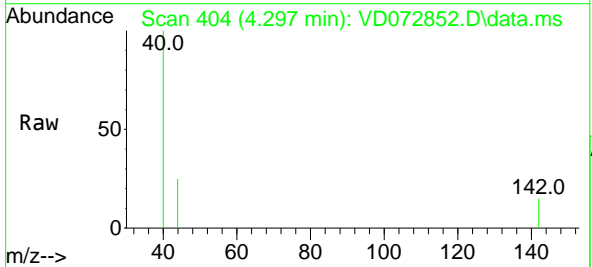
Instrument : MSVOA_D
 ClientSampleId : RBR-346

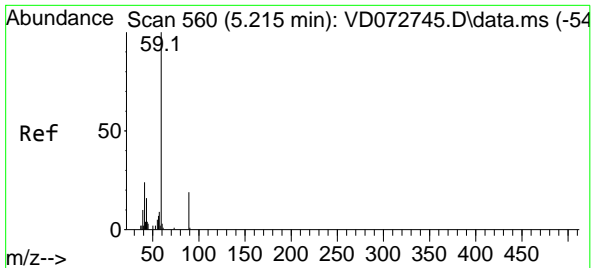
Tgt Ion: 94 Resp: 1047
 Ion Ratio Lower Upper
 94 100
 96 74.9 77.6 116.4#



#10
 Methyl Iodide
 Concen: 2.174 ug/l
 RT: 4.297 min Scan# 404
 Delta R.T. -0.000 min
 Lab File: VD072852.D
 Acq: 06 May 2022 15:31

Tgt Ion: 142 Resp: 733
 Ion Ratio Lower Upper
 142 100
 127 47.5 37.3 55.9
 141 0.0 11.7 17.5#

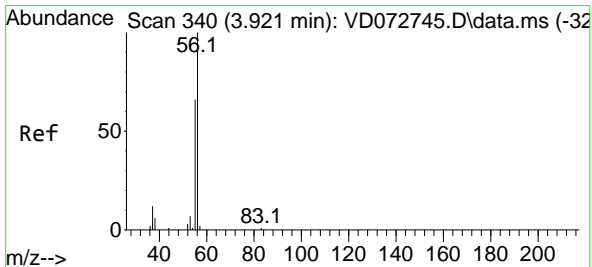
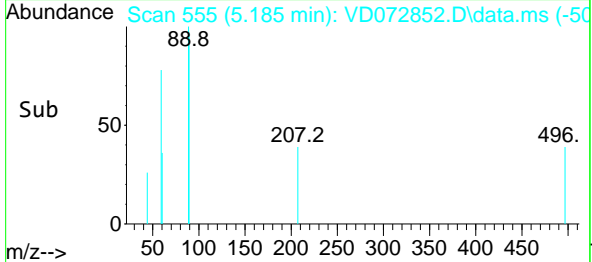
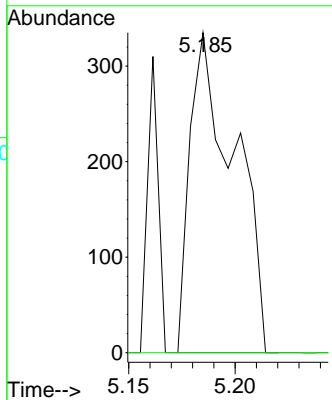
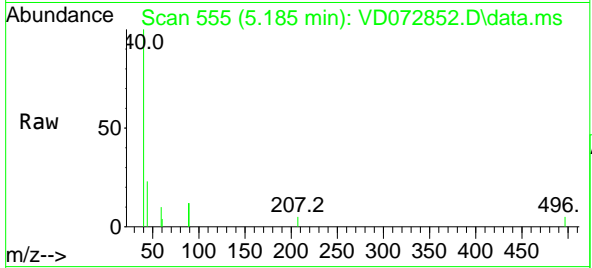




#11
 Tert butyl alcohol
 Concen: 17.410 ug/l
 RT: 5.185 min Scan# 51
 Delta R.T. -0.030 min
 Lab File: VD072852.D
 Acq: 06 May 2022 15:31

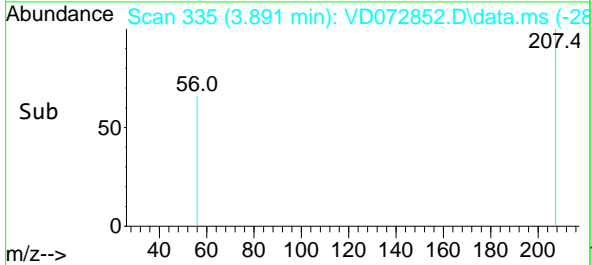
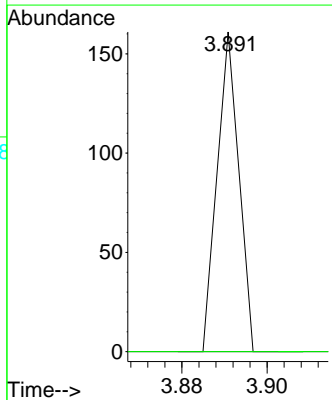
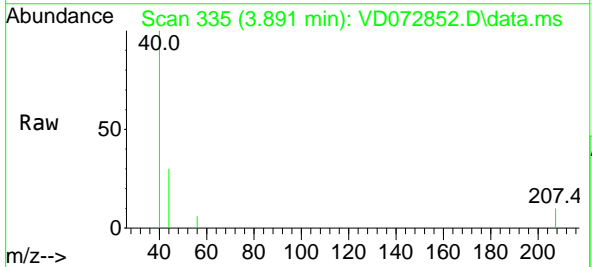
Instrument :
 MSVOA_D
 ClientSampleId :
 RBR-346

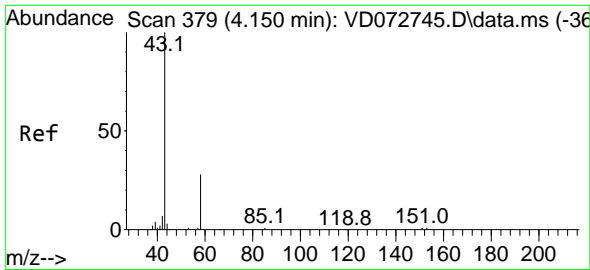
Tgt Ion: 59 Resp: 490
 Ion Ratio Lower Upper
 59 100
 57 0.0 7.8 11.6#



#13
 Acrolein
 Concen: Below Cal
 RT: 3.891 min Scan# 335
 Delta R.T. -0.030 min
 Lab File: VD072852.D
 Acq: 06 May 2022 15:31

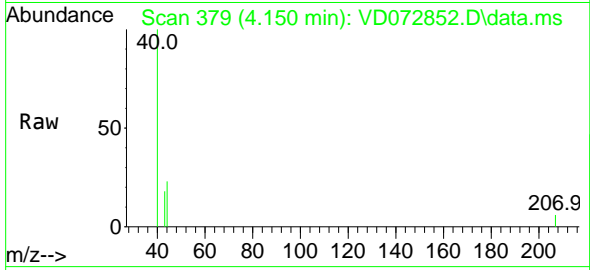
Tgt Ion: 56 Resp: 57
 Ion Ratio Lower Upper
 56 100
 55 0.0 57.1 85.7#



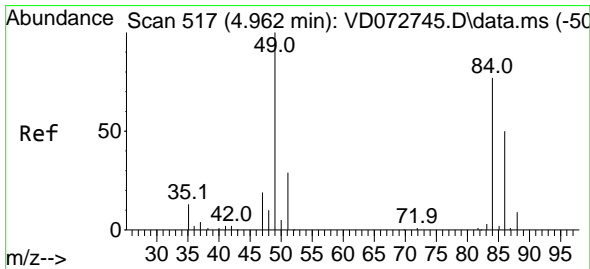
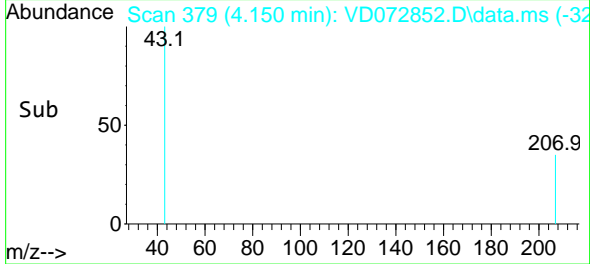
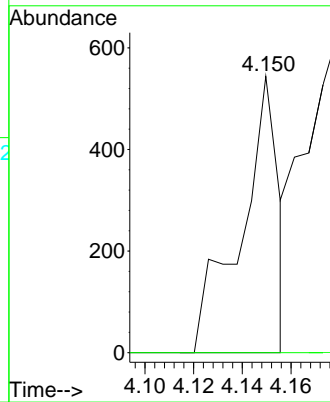


#16
 Acetone
 Concen: Below Cal
 RT: 4.150 min Scan# 31
 Delta R.T. -0.000 min
 Lab File: VD072852.D
 Acq: 06 May 2022 15:31

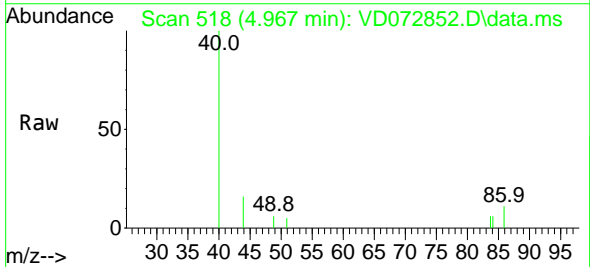
Instrument : MSVOA_D
 ClientSampleId : RBR-346



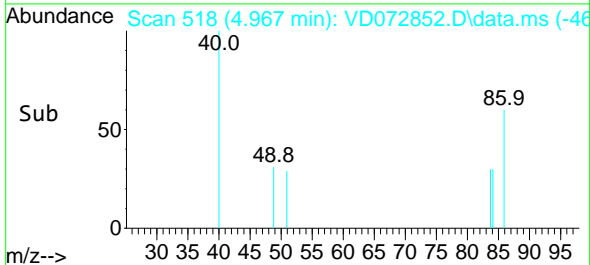
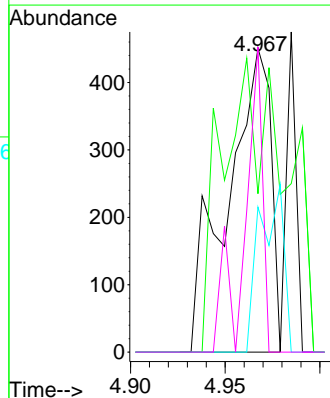
Tgt Ion: 43 Resp: 591
 Ion Ratio Lower Upper
 43 100
 58 0.0 22.1 33.1#

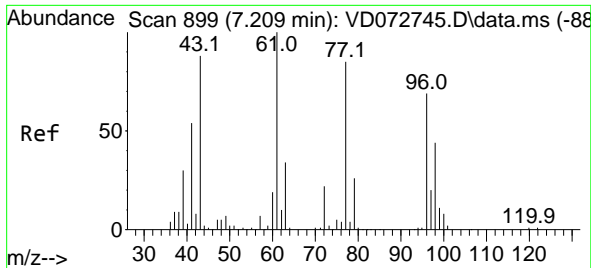


#20
 Methylene Chloride
 Concen: Below Cal
 RT: 4.967 min Scan# 518
 Delta R.T. 0.005 min
 Lab File: VD072852.D
 Acq: 06 May 2022 15:31



Tgt Ion: 84 Resp: 720
 Ion Ratio Lower Upper
 84 100
 49 52.1 112.8 169.2#
 51 47.7 32.6 48.8
 86 100.4 47.9 71.9#

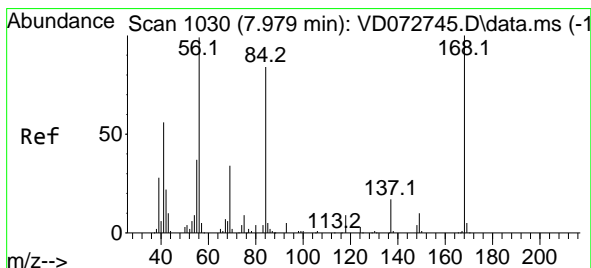
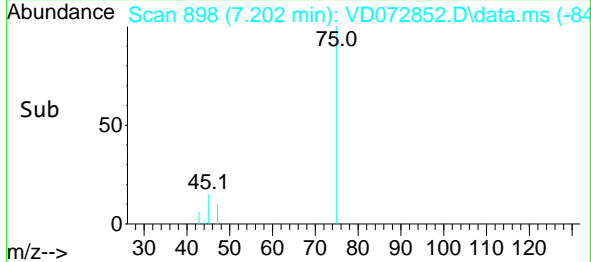
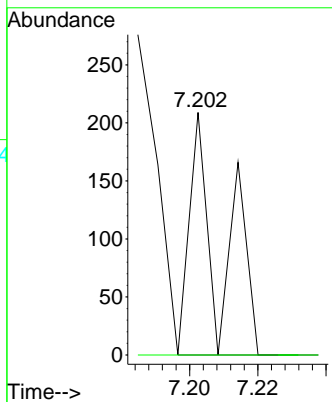
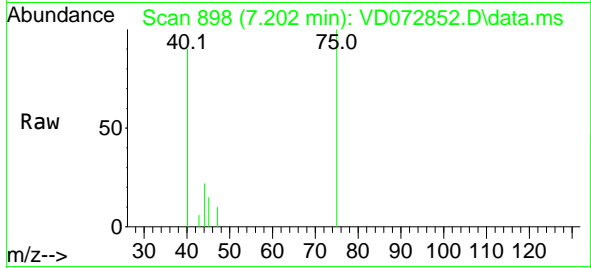




#25
 2-Butanone
 Concen: 1.393 ug/l
 RT: 7.202 min Scan# 899
 Delta R.T. -0.007 min
 Lab File: VD072852.D
 Acq: 06 May 2022 15:31

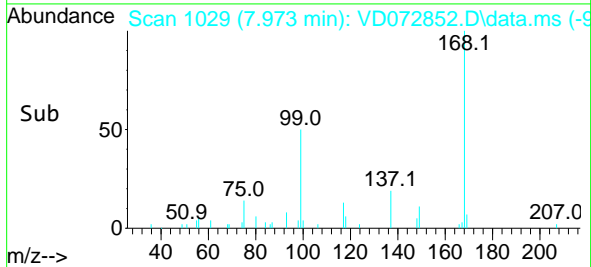
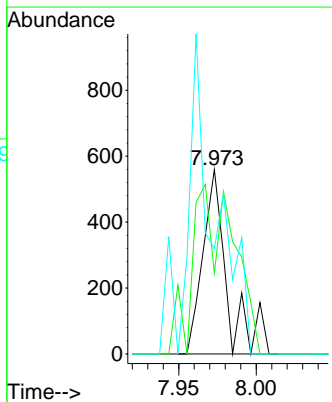
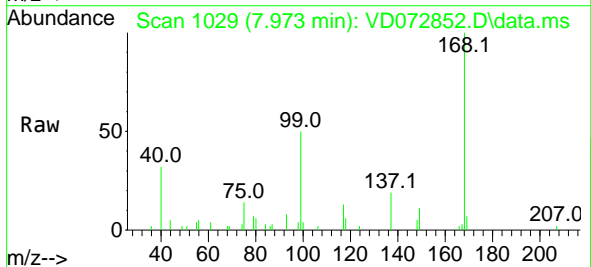
Instrument : MSVOA_D
 ClientSampleId : RBR-346

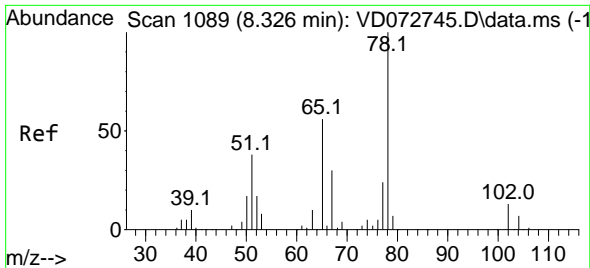
Tgt Ion: 43 Resp: 132
 Ion Ratio Lower Upper
 43 100
 72 0.0 18.6 27.8#



#31
 Cyclohexane
 Concen: 1.064 ug/l
 RT: 7.973 min Scan# 1029
 Delta R.T. -0.006 min
 Lab File: VD072852.D
 Acq: 06 May 2022 15:31

Tgt Ion: 56 Resp: 605
 Ion Ratio Lower Upper
 56 100
 69 43.9 25.4 38.2#
 84 57.1 63.0 94.4#

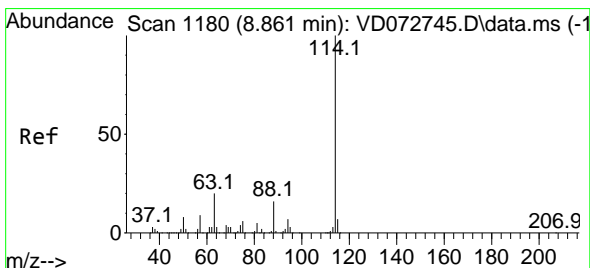
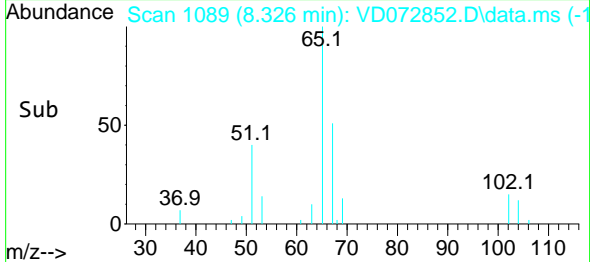
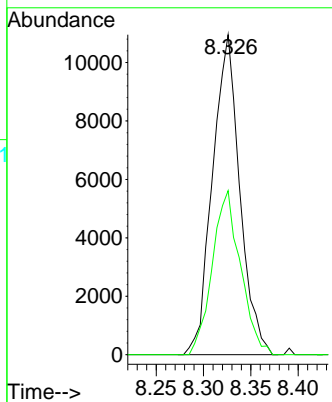
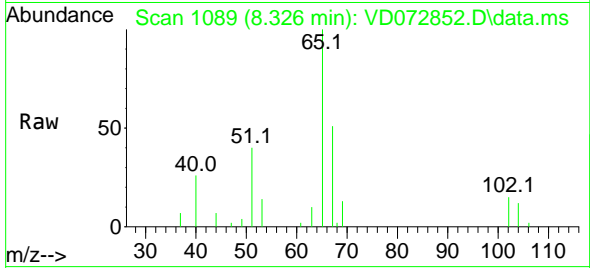




#33
 1,2-Dichloroethane-d4
 Concen: 67.433 ug/l
 RT: 8.326 min Scan# 1089
 Delta R.T. -0.000 min
 Lab File: VD072852.D
 Acq: 06 May 2022 15:31

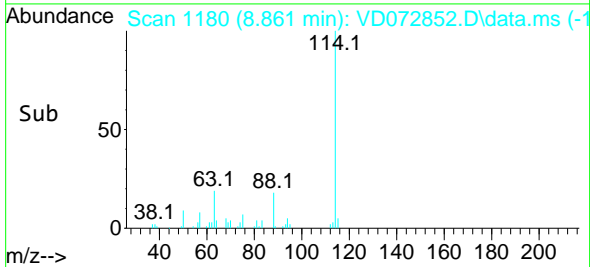
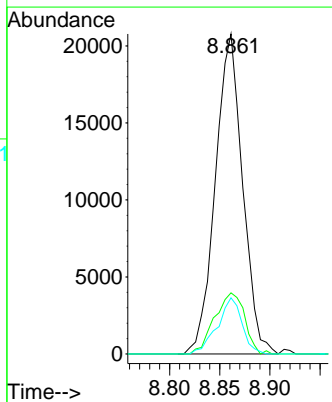
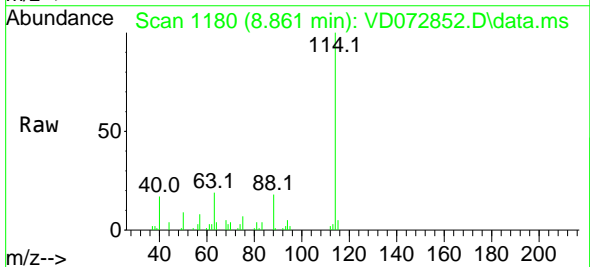
Instrument : MSVOA_D
 ClientSampleId : RBR-346

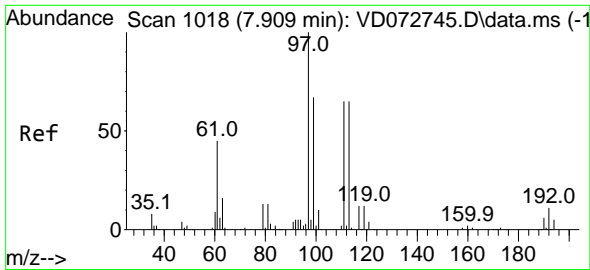
Tgt Ion: 65 Resp: 21935
 Ion Ratio Lower Upper
 65 100
 67 53.0 0.0 101.4



#34
 1,4-Difluorobenzene
 Concen: 50.000 ug/l
 RT: 8.861 min Scan# 1180
 Delta R.T. 0.000 min
 Lab File: VD072852.D
 Acq: 06 May 2022 15:31

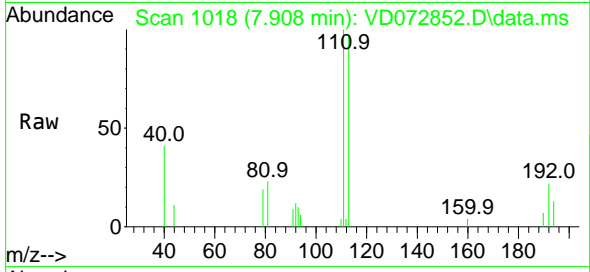
Tgt Ion:114 Resp: 39222
 Ion Ratio Lower Upper
 114 100
 63 19.1 0.0 46.6
 88 17.5 0.0 33.2



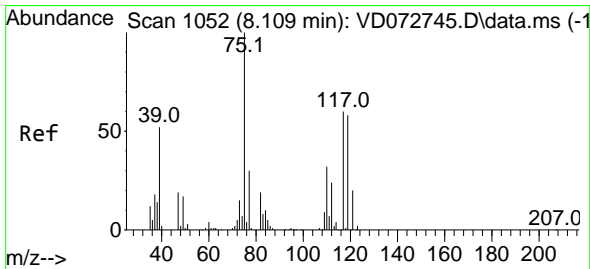
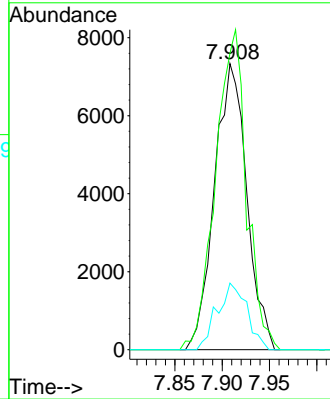
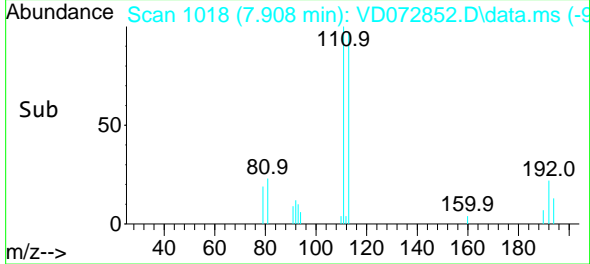


#35
 Dibromofluoromethane
 Concen: 63.196 ug/l
 RT: 7.908 min Scan# 1018
 Delta R.T. -0.001 min
 Lab File: VD072852.D
 Acq: 06 May 2022 15:31

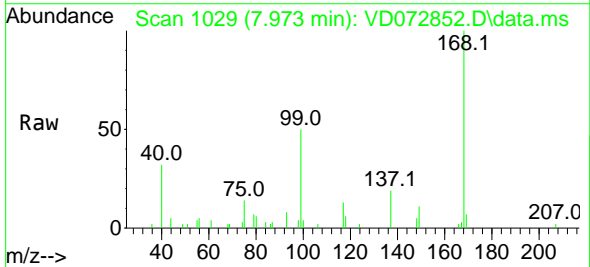
Instrument : MSVOA_D
 ClientSampleId : RBR-346



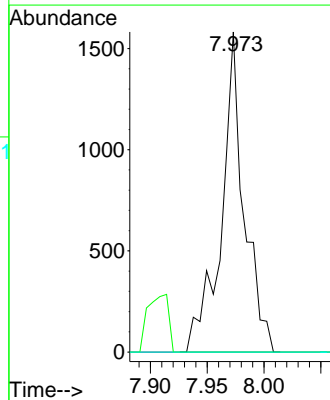
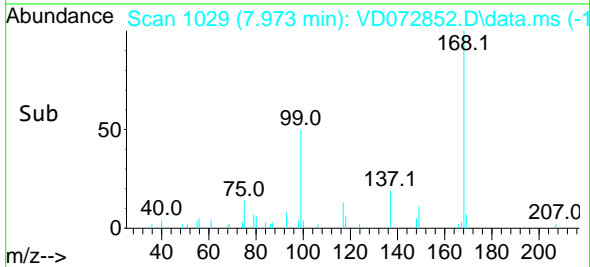
Tgt Ion:113 Resp: 17408
 Ion Ratio Lower Upper
 113 100
 111 107.0 83.8 125.6
 192 21.4 14.6 21.8

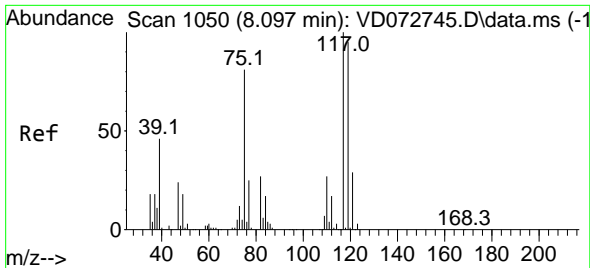


#36
 1,1-Dichloropropene
 Concen: 4.921 ug/l
 RT: 7.973 min Scan# 1029
 Delta R.T. -0.136 min
 Lab File: VD072852.D
 Acq: 06 May 2022 15:31



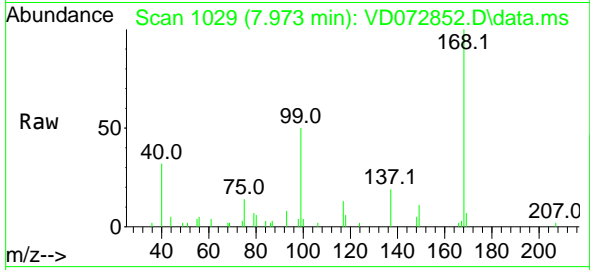
Tgt Ion: 75 Resp: 2204
 Ion Ratio Lower Upper
 75 100
 110 0.0 16.4 49.1#
 77 0.0 24.2 36.2#



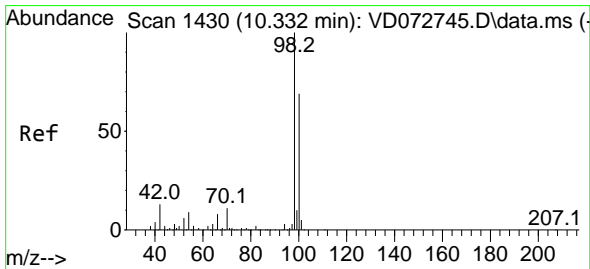
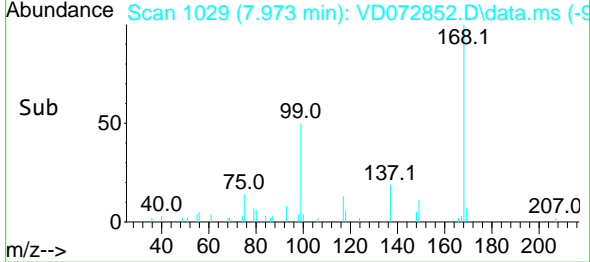
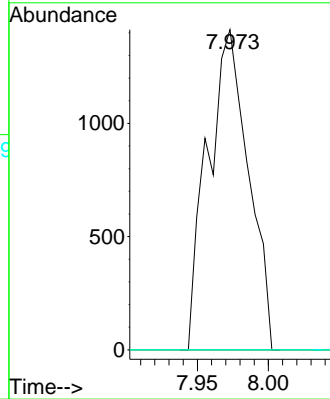


#38
 Carbon Tetrachloride
 Concen: 6.076 ug/l
 RT: 7.973 min Scan# 1029
 Delta R.T. -0.124 min
 Lab File: VD072852.D
 Acq: 06 May 2022 15:31

Instrument : MSVOA_D
 ClientSampleId : RBR-346

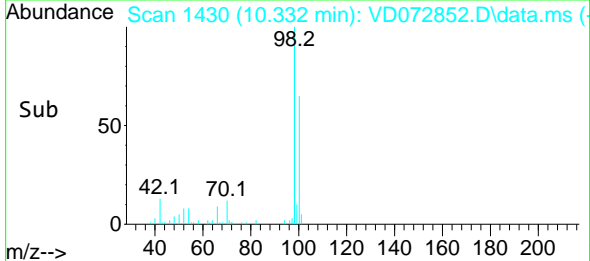
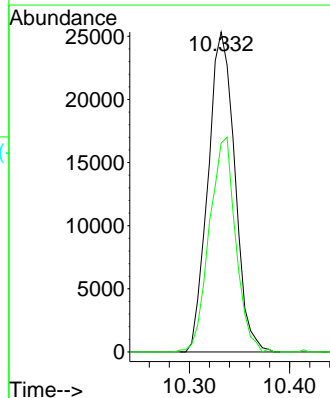
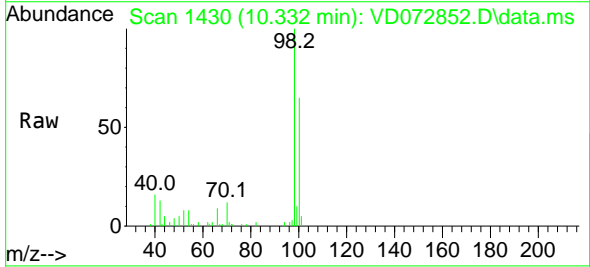


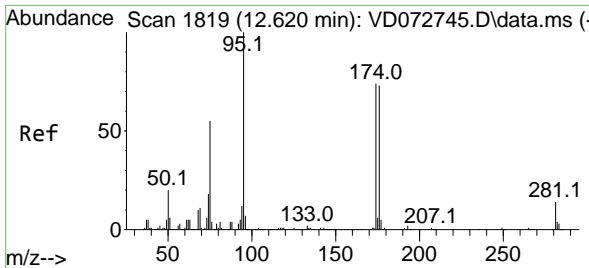
Tgt Ion:117 Resp: 2825
 Ion Ratio Lower Upper
 117 100
 119 0.0 75.8 113.6#
 121 0.0 24.5 36.7#



#50
 Toluene-d8
 Concen: 47.526 ug/l
 RT: 10.332 min Scan# 1430
 Delta R.T. -0.000 min
 Lab File: VD072852.D
 Acq: 06 May 2022 15:31

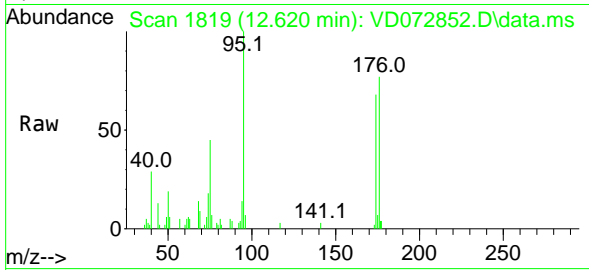
Tgt Ion: 98 Resp: 46961
 Ion Ratio Lower Upper
 98 100
 100 66.1 52.4 78.6





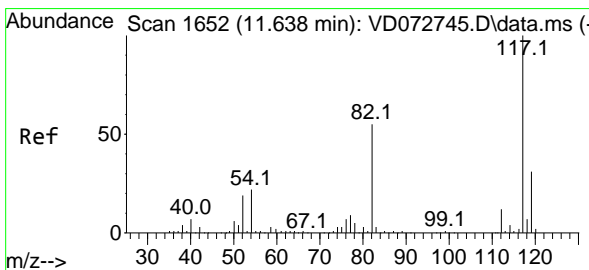
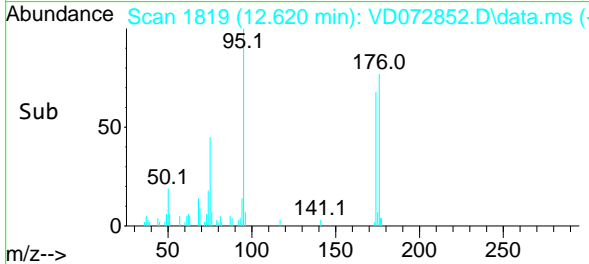
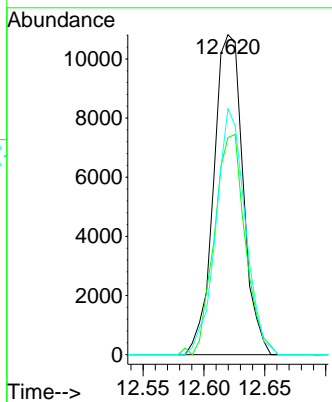
#62
 4-Bromofluorobenzene
 Concen: 49.189 ug/l
 RT: 12.620 min Scan# 1819
 Delta R.T. -0.000 min
 Lab File: VD072852.D
 Acq: 06 May 2022 15:31

Instrument : MSVOA_D
 ClientSampleId : RBR-346



Tgt Ion: 95 Resp: 18123

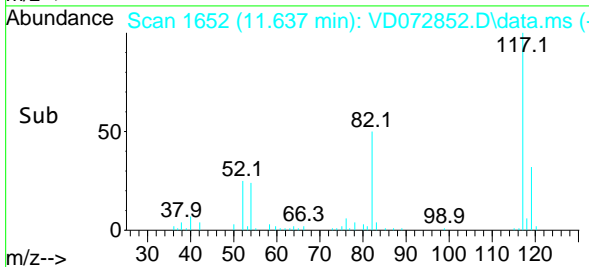
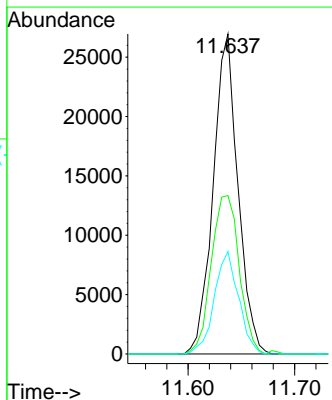
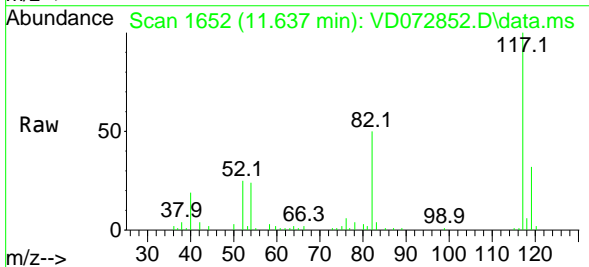
Ion	Ratio	Lower	Upper
95	100		
174	72.7	0.0	152.8
176	76.7	0.0	145.4

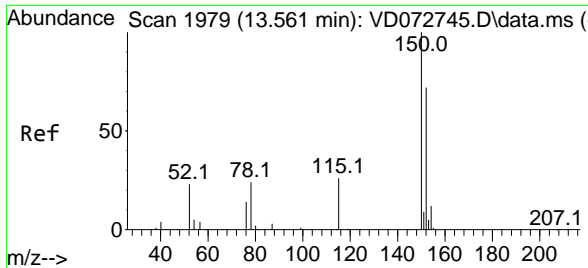


#63
 Chlorobenzene-d5
 Concen: 50.000 ug/l
 RT: 11.637 min Scan# 1652
 Delta R.T. -0.001 min
 Lab File: VD072852.D
 Acq: 06 May 2022 15:31

Tgt Ion: 117 Resp: 43515

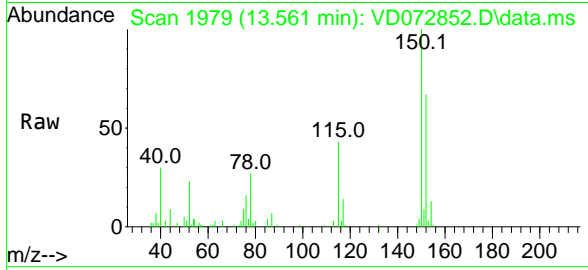
Ion	Ratio	Lower	Upper
117	100		
82	49.5	45.3	67.9
119	32.0	26.6	40.0





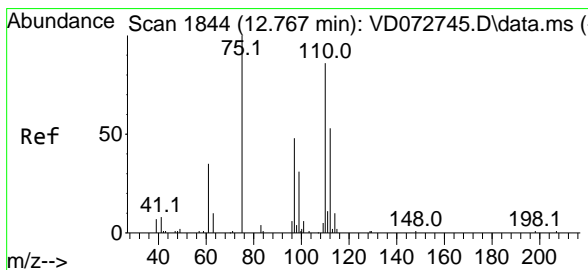
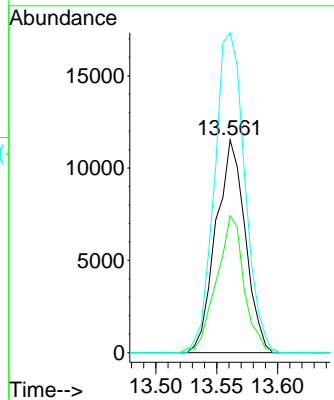
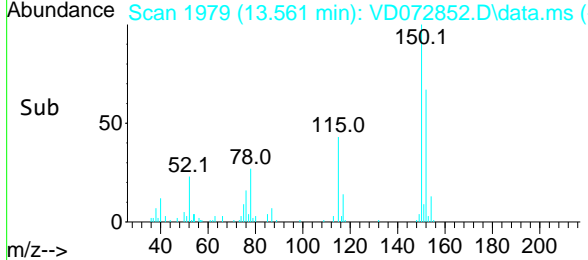
#72
 1,4-Dichlorobenzene-d4
 Concen: 50.000 ug/l
 RT: 13.561 min Scan# 1979
 Delta R.T. -0.000 min
 Lab File: VD072852.D
 Acq: 06 May 2022 15:31

Instrument : MSVOA_D
 ClientSampleId : RBR-346

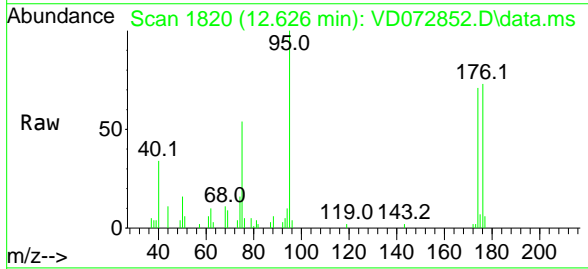


Tgt Ion:152 Resp: 19265

Ion	Ratio	Lower	Upper
152	100		
115	60.9	31.3	93.8
150	155.6	0.0	348.6

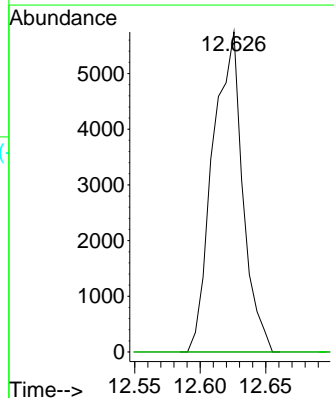
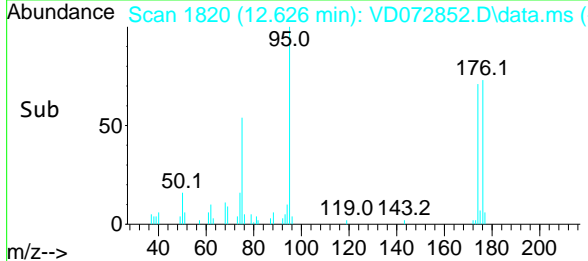


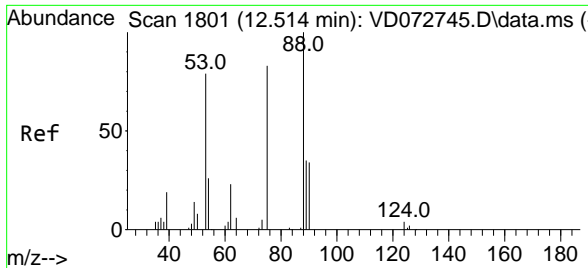
#76
 1,2,3-Trichloropropane
 Concen: 42.571 ug/l
 RT: 12.626 min Scan# 1820
 Delta R.T. -0.141 min
 Lab File: VD072852.D
 Acq: 06 May 2022 15:31



Tgt Ion: 75 Resp: 9145

Ion	Ratio	Lower	Upper
75	100		
77	0.0	0.0	0.0





#81
 trans-1,4-Dichloro-2-butene
 Concen: 97.896 ug/l
 RT: 12.626 min Scan# 11
 Delta R.T. 0.112 min
 Lab File: VD072852.D
 Acq: 06 May 2022 15:31

Instrument :
 MSVOA_D
 ClientSampleId :
 RBR-346

Tgt Ion: 75 Resp: 9145

Ion	Ratio	Lower	Upper
75	100		
53	0.0	86.5	129.7#
89	0.0	33.9	50.9#

