

Data Path : Z:\voasrv\HPCHEM1\MSVOA_D\Data\VD050622\
 Data File : VD072849.D
 Acq On : 06 May 2022 14:06
 Operator : VA/SY
 Sample : N2669-01
 Misc : 5.03G/5.00ml/MSVOA_D/SOIL
 ALS Vial : 8 Sample Multiplier: 1

Instrument :
 MSVOA_D
 ClientSampleId :
 OR-03-050322

Integration Parameters: RTEINT.P

Integrator: RTE
 Smoothing : ON Filtering: 5
 Sampling : 1 Min Area: 3 % of largest Peak
 Start Thrs: 0.2 Max Peaks: 100
 Stop Thrs : 0 Peak Location: TOP

If leading or trailing edge < 100 prefer < Baseline drop else tangent >
 Peak separation: 5

Method : Z:\voasrv\HPCHEM1\MSVOA_D\Method\82D050222S.M
 Title : SW846 8260

Signal : TIC: VD072849.D\data.ms

peak #	R.T. min	first scan	max scan	last scan	PK TY	peak height	corr. area	corr. % max.	% of total
1	2.144	33	38	42	rBV3	1898	3732	1.00%	0.167%
2	2.779	141	146	150	rBV3	2835	5736	1.54%	0.257%
3	4.150	373	379	380	rBV	3415	3971	1.07%	0.178%
4	5.185	550	555	556	rVV3	3603	5736	1.54%	0.257%
5	5.197	556	557	563	rVB2	3048	3802	1.02%	0.171%
6	7.197	886	897	903	rBV3	14575	43067	11.58%	1.932%
7	7.908	1010	1018	1023	rBV2	63915	151481	40.73%	6.795%
8	7.973	1023	1029	1039	rVB	88175	204255	54.91%	9.163%
9	8.326	1081	1089	1097	rBV	78527	170400	45.81%	7.644%
10	8.855	1172	1179	1187	rBV2	128474	264870	71.21%	11.882%
11	10.332	1423	1430	1438	rBV	205508	361965	97.31%	16.238%
12	11.073	1552	1556	1562	rVB2	16140	23950	6.44%	1.074%
13	11.638	1645	1652	1663	rBV	209583	371952	100.00%	16.686%
14	12.620	1812	1819	1825	rBV	151238	254881	68.53%	11.434%
15	12.938	1869	1873	1878	rVB4	6618	10557	2.84%	0.474%
16	13.561	1971	1979	1987	rVB	209456	344671	92.67%	15.462%
17	15.731	2342	2348	2351	rBV4	2220	4143	1.11%	0.186%

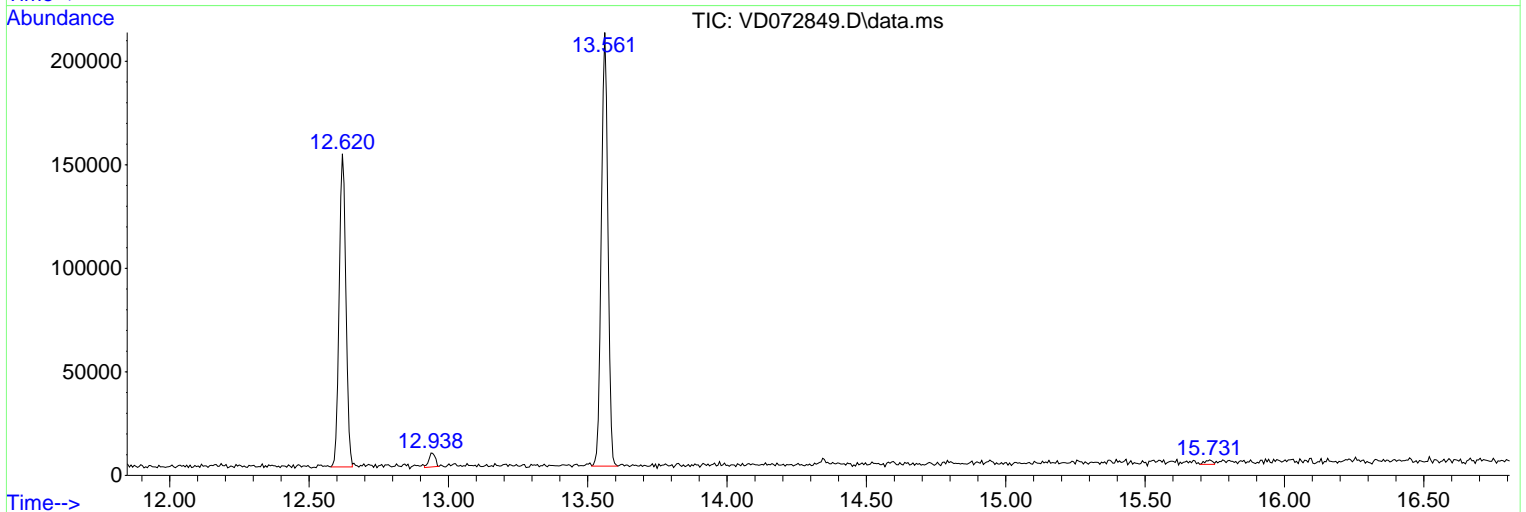
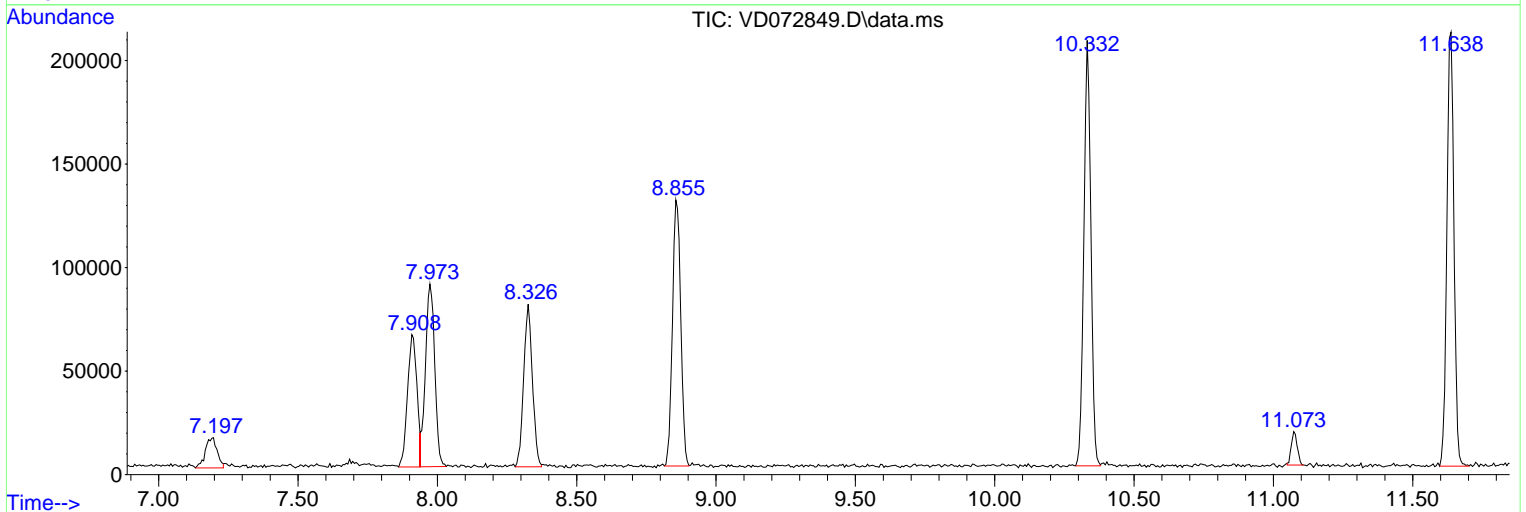
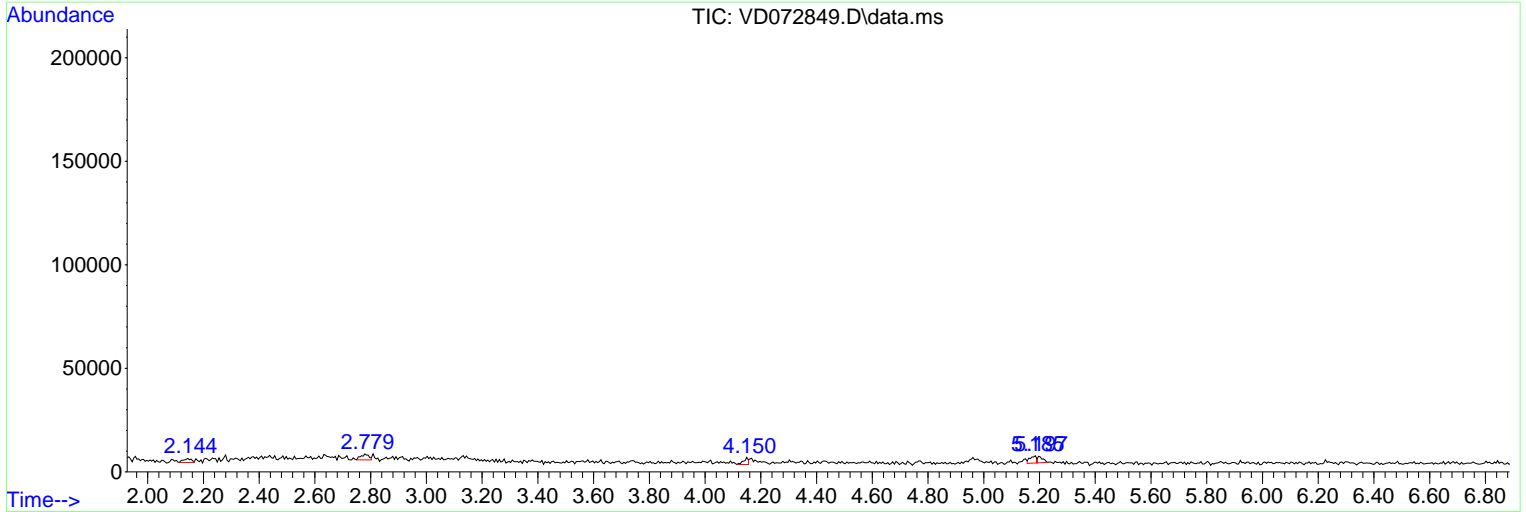
Sum of corrected areas: 2229169

Data Path : Z:\voasrv\HPCHEM1\MSVOA_D\Data\VD050622\
 Data File : VD072849.D
 Acq On : 06 May 2022 14:06
 Operator : VA/SY
 Sample : N2669-01
 Misc : 5.03G/5.00ml/MSVOA_D/SOIL
 ALS Vial : 8 Sample Multiplier: 1

Instrument :
 MSVOA_D
 ClientSampleId :
 OR-03-050322

Quant Method : Z:\voasrv\HPCHEM1\MSVOA_D\Method\82D050222S.M
 Quant Title : SW846 8260

TIC Library : C:\Database\NIST20.L
 TIC Integration Parameters: LSCINT.P



Data Path : Z:\voasrv\HPCHEM1\MSVOA_D\Data\VD050622\
 Data File : VD072849.D
 Acq On : 06 May 2022 14:06
 Operator : VA/SY
 Sample : N2669-01
 Misc : 5.03G/5.00ml/MSVOA_D/SOIL
 ALS Vial : 8 Sample Multiplier: 1

Instrument :
 MSVOA_D
 ClientSampleId :
 OR-03-050322

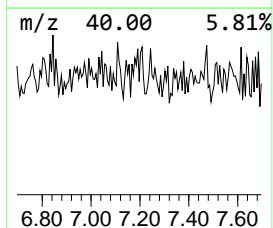
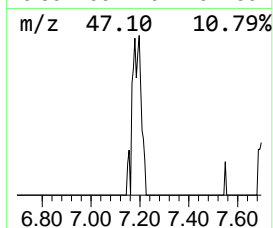
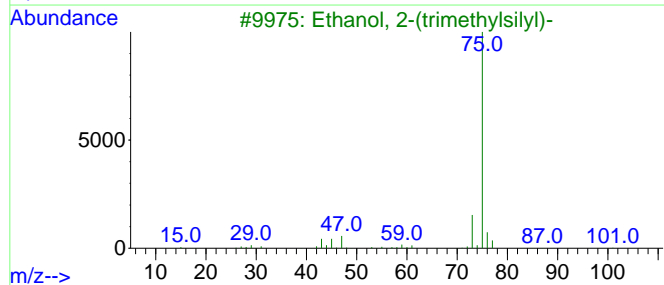
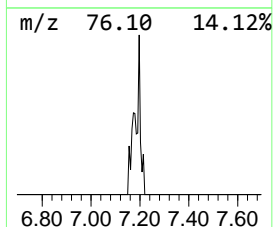
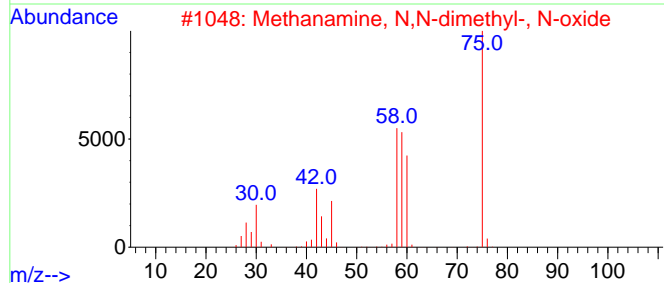
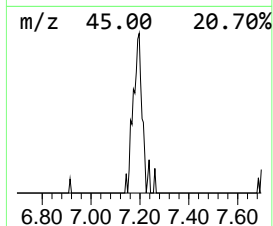
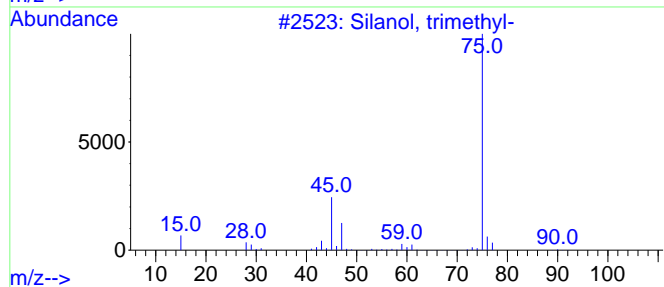
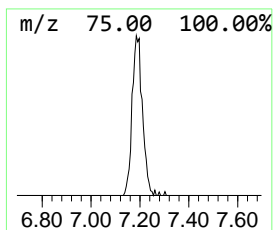
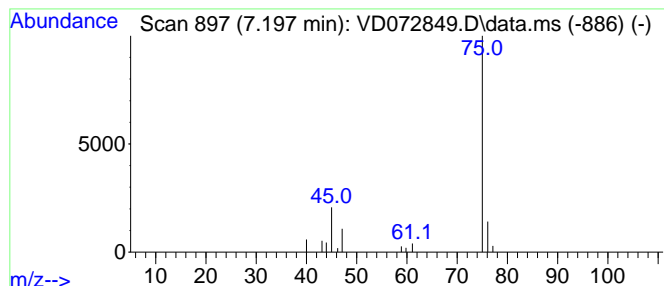
Quant Method : Z:\voasrv\HPCHEM1\MSVOA_D\Method\82D050222S.M
 Quant Title : SW846 8260

TIC Library : C:\Database\NIST20.L
 TIC Integration Parameters: LSCINT.P

 Peak Number 1 Silanol, trimethyl- Concentration Rank 1

R.T.	EstConc	Area	Relative to ISTD	R.T.
7.197	10.54 ug/l	43067	Pentafluorobenzene	7.973

Hit#	of 5	Tentative ID	MW	MolForm	CAS#	Qual
1		Silanol, trimethyl-	90	C3H10OSi	001066-40-6	74
2		Methanamine, N,N-dimethyl-, N-oxide	75	C3H9NO	001184-78-7	9
3		Ethanol, 2-(trimethylsilyl)-	118	C5H14OSi	002916-68-9	9
4		Ethanethioamide	75	C2H5NS	000062-55-5	7
5		Formamide, N-methylthio	75	C2H5NS	018952-41-5	4



Data Path : Z:\voasrv\HPCHEM1\MSVOA_D\Data\VD050622\
Data File : VD072849.D
Acq On : 06 May 2022 14:06
Operator : VA/SY
Sample : N2669-01
Misc : 5.03G/5.00ml/MSVOA_D/SOIL
ALS Vial : 8 Sample Multiplier: 1

Instrument :
MSVOA_D
ClientSampleId :
OR-03-050322

Quant Method : Z:\voasrv\HPCHEM1\MSVOA_D\Method\82D050222S.M
Quant Title : SW846 8260

TIC Library : C:\Database\NIST20.L
TIC Integration Parameters: LSCINT.P

TIC Top Hit name	RT	EstConc	Units	Response	--Internal Standard--			
					#	RT	Resp	Conc
-----	-----	-----	-----	-----	-----	-----	-----	-----
Silanol, trimet...	7.197	10.5	ug/l	43067	1	7.973	204255	50.0