

Data Path : Z:\voasrv\HPCHEM1\MSVOA_D\Data\VD050622\
 Data File : VD072874.D
 Acq On : 07 May 2022 03:26
 Operator : VA/SY
 Sample : N2691-03
 Misc : 5.08G/5.00ml/MSVOA_D/SOIL
 ALS Vial : 36 Sample Multiplier: 1

Instrument :
 MSVOA_D
 ClientSampleId :
 SHALLOW-WC-1

Integration Parameters: RTEINT.P
 Integrator: RTE
 Smoothing : ON Filtering: 5
 Sampling : 1 Min Area: 3 % of largest Peak
 Start Thrs: 0.2 Max Peaks: 100
 Stop Thrs : 0 Peak Location: TOP

If leading or trailing edge < 100 prefer < Baseline drop else tangent >
 Peak separation: 5

Method : Z:\voasrv\HPCHEM1\MSVOA_D\Method\82D050222S.M
 Title : SW846 8260

Signal : TIC: VD072874.D\data.ms

peak #	R.T. min	first scan	max scan	last scan	PK TY	peak height	corr. area	corr. % max.	% of total
1	4.162	370	381	390	rVB	25295	68625	2.92%	0.525%
2	4.956	504	516	529	rBV3	38169	124274	5.28%	0.952%
3	5.173	542	553	554	rBV4	19837	39361	1.67%	0.301%
4	5.997	684	693	703	rVB7	12052	39015	1.66%	0.299%
5	7.197	886	897	905	rBV3	46894	144104	6.12%	1.103%
6	7.908	1007	1018	1023	rBV	315652	753026	31.99%	5.766%
7	7.973	1023	1029	1041	rVB2	585096	1281046	54.43%	9.809%
8	8.326	1074	1089	1100	rBV2	298526	804479	34.18%	6.160%
9	8.855	1169	1179	1192	rBV	842892	1710384	72.67%	13.096%
10	10.332	1421	1430	1448	rBV	1337559	2353612	100.00%	18.022%
11	10.714	1489	1495	1502	rBV2	39565	69160	2.94%	0.530%
12	11.079	1550	1557	1564	rBV	42517	74530	3.17%	0.571%
13	11.449	1615	1620	1627	rVB2	21951	35779	1.52%	0.274%
14	11.632	1643	1651	1664	rBV	1201324	2101629	89.29%	16.092%
15	12.620	1811	1819	1827	rBV	927877	1532758	65.12%	11.736%
16	12.943	1867	1874	1879	rBV7	16834	32398	1.38%	0.248%
17	13.561	1972	1979	1987	rBV	1165539	1895731	80.55%	14.516%

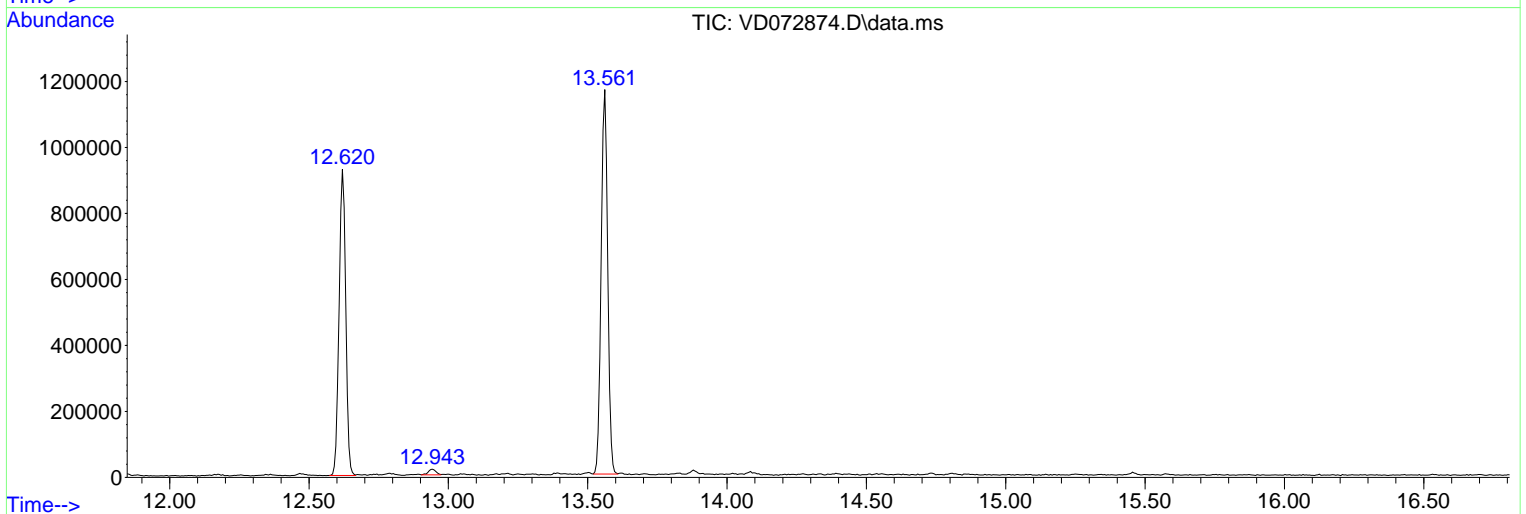
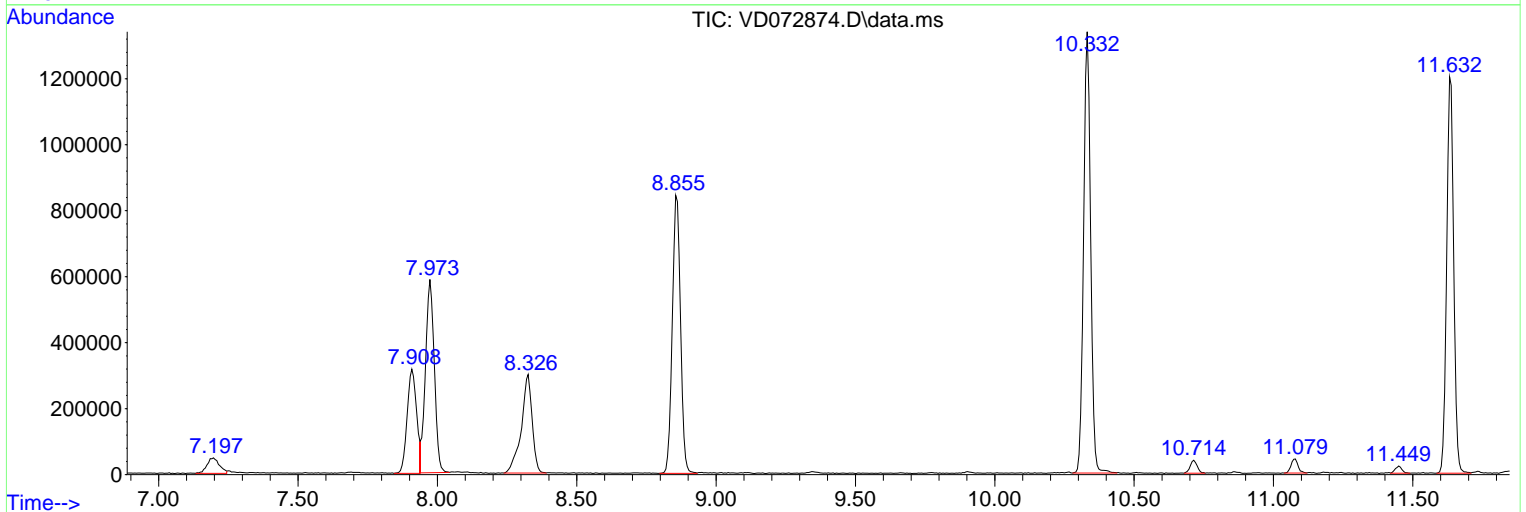
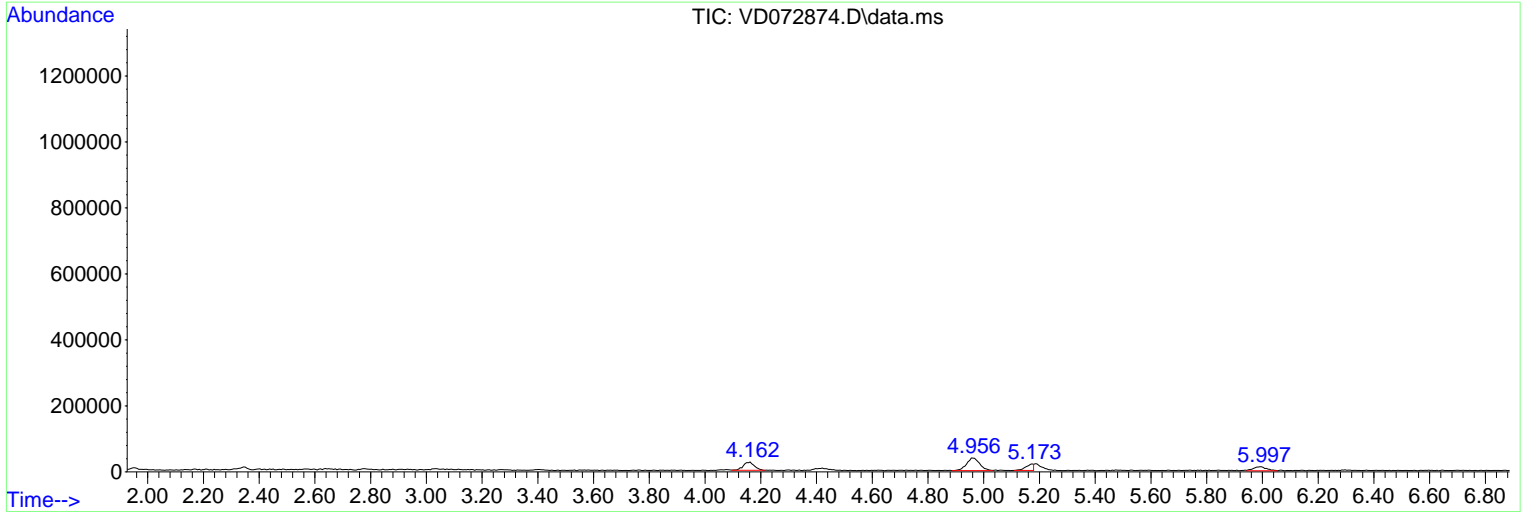
Sum of corrected areas: 13059911

Data Path : Z:\voasrv\HPCHEM1\MSVOA_D\Data\VD050622\
 Data File : VD072874.D
 Acq On : 07 May 2022 03:26
 Operator : VA/SY
 Sample : N2691-03
 Misc : 5.08G/5.00ml/MSVOA_D/SOIL
 ALS Vial : 36 Sample Multiplier: 1

Instrument :
 MSVOA_D
 ClientSampleId :
 SHALLOW-WC-1

Quant Method : Z:\voasrv\HPCHEM1\MSVOA_D\Method\82D050222S.M
 Quant Title : SW846 8260

TIC Library : C:\Database\NIST20.L
 TIC Integration Parameters: LSCINT.P



Library Search Compound Report

Data Path : Z:\voasrv\HPCHEM1\MSVOA_D\Data\VD050622\
Data File : VD072874.D
Acq On : 07 May 2022 03:26
Operator : VA/SY
Sample : N2691-03
Misc : 5.08G/5.00ml/MSVOA_D/SOIL
ALS Vial : 36 Sample Multiplier: 1

Instrument :
MSVOA_D
ClientSampleId :
SHALLOW-WC-1

Quant Method : Z:\voasrv\HPCHEM1\MSVOA_D\Method\82D050222S.M
Quant Title : SW846 8260

TIC Library : C:\Database\NIST20.L
TIC Integration Parameters: LSCINT.P

No Library Search Compounds Detected

Data Path : Z:\voasrv\HPCHEM1\MSVOA_D\Data\VD050622\
Data File : VD072874.D
Acq On : 07 May 2022 03:26
Operator : VA/SY
Sample : N2691-03
Misc : 5.08G/5.00ml/MSVOA_D/SOIL
ALS Vial : 36 Sample Multiplier: 1

Instrument :
MSVOA_D
ClientSampleId :
SHALLOW-WC-1

Quant Method : Z:\voasrv\HPCHEM1\MSVOA_D\Method\82D050222S.M
Quant Title : SW846 8260

TIC Library : C:\Database\NIST20.L
TIC Integration Parameters: LSCINT.P

TIC Top Hit name	RT	EstConc	Units	Response	--Internal Standard--		
					#	RT	Resp Conc
