

Data Path : Z:\VOASRV\HPCHEM1\MSVOA D\DATA\VD051519\
 Data File : VD062394.D
 Acq On : 15 May 2019 18:01
 Operator : FY/SY
 Sample : K2822-02
 Misc : 5.00µ/5mL/MSVOA D/SOIL
 ALS Vial : 11 Sample Multiplier: 1

Instrument :
 MSVOA_D
 ClientSampleId :

Quant Time: May 16 03:58:37 2019
 Quant Method : Z:\VOASRV\HPCHEM1\MSVOA_D\METHOD\82D050719S.M
 Quant Title : SW846 8260
 QLast Update : Tue May 07 14:26:29 2019
 Response via : Initial Calibration

Internal Standards	R.T.	QIon	Response	Conc	Units	Dev(Min)
1) Pentafluorobenzene	7.05	168	623200	50.00	µg/l	0.03
34) 1,4-Difluorobenzene	8.22	114	834211	50.00	µg/l	0.03
63) Chlorobenzene-d5	12.38	117	652527	50.00	µg/l	0.02
72) 1,4-Dichlorobenzene-d4	14.52	152	294354	50.00	µg/l	0.01

System Monitoring Compounds

33) 1,2-Dichloroethane-d4	7.45	65	278518	48.09	µg/l	0.03
Spiked Amount				50.000		
			Recovery	=	96.18%	
35) Dibromofluoromethane	6.93	113	321582	46.46	µg/l	0.04
Spiked Amount				50.000		
			Recovery	=	92.92%	
50) Toluene-d8	10.42	98	571539	34.25	µg/l	0.02
Spiked Amount				50.000		
			Recovery	=	68.50%	
62) 4-Bromofluorobenzene	13.56	95	254999	38.05	µg/l	0.01
Spiked Amount				50.000		
			Recovery	=	76.10%	

Target Compounds

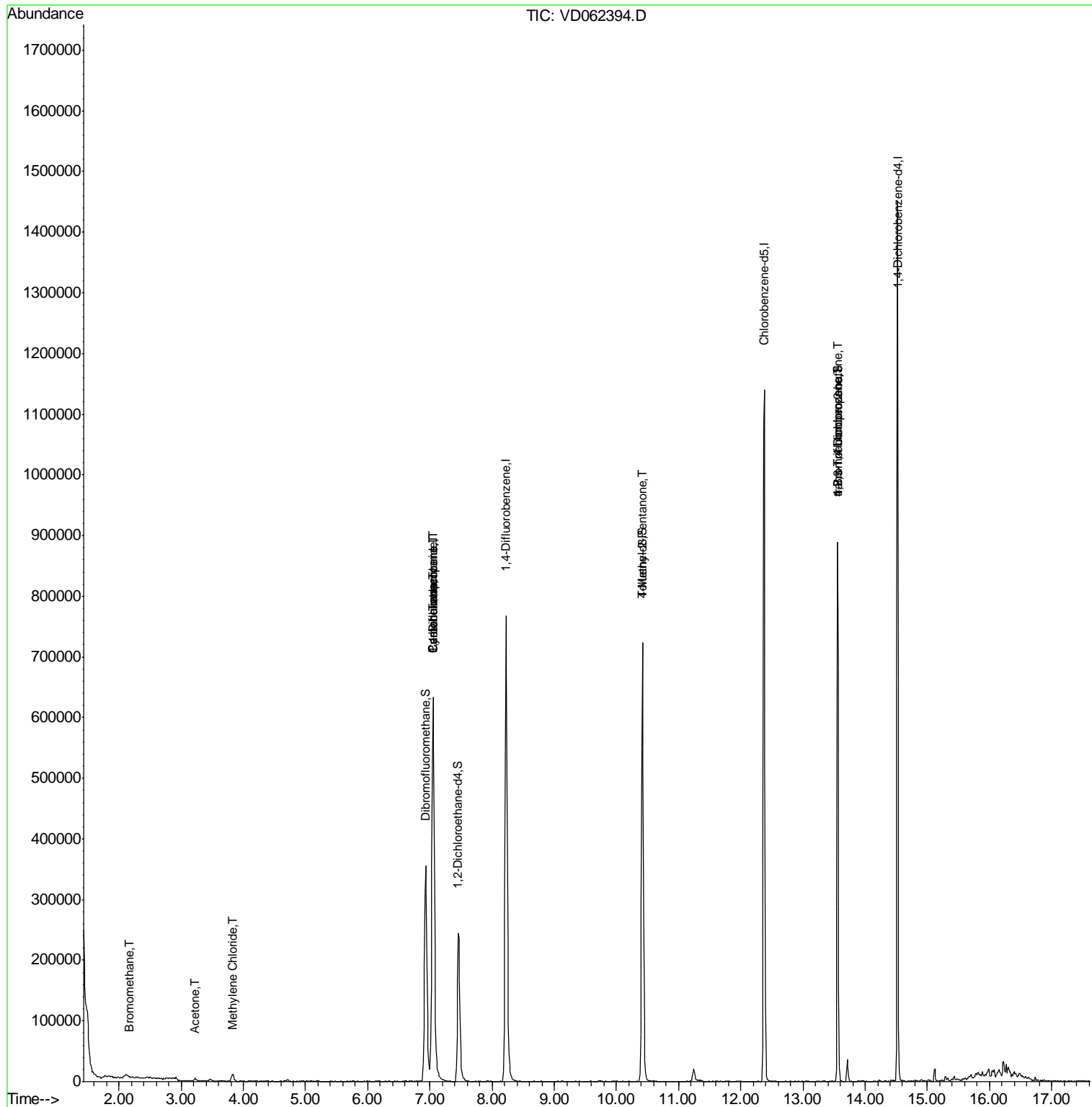
						Qvalue
5) Bromomethane	2.18	94	4065	4.099	µg/l #	9
16) Acetone	3.22	43	10307	8.486	µg/l #	82
20) Methylene Chloride	3.82	84	8378	1.652	µg/l	92
31) Cyclohexane	7.04	56	12962	2.133	µg/l #	1
36) 1,1-Dichloropropene	7.05	75	49279	7.205	µg/l #	46
38) Carbon Tetrachloride	7.05	117	63170	6.673	µg/l #	15
51) 4-Methyl-2-Pentanone	10.42	43	2656	1.004	µg/l #	1
76) 1,2,3-Trichloropropane	13.56	75	89491	25.582	µg/l #	43
81) trans-1,4-Dichloro-2-buten	13.56	75	111475	112.880	µg/l #	16

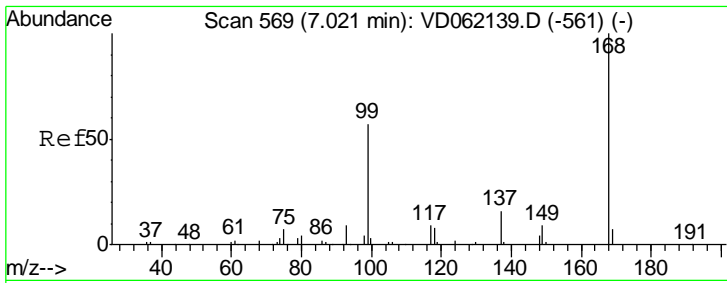
(#) = qualifier out of range (m) = manual integration (+) = signals summed

Data Path : Z:\VOASRV\HPCHEM1\MSVOA D\DATA\VD051519\
 Data File : VD062394.D
 Acq On : 15 May 2019 18:01
 Operator : FY/SY
 Sample : K2822-02
 Misc : 5.00µ/5mL/MSVOA D/SOIL
 ALS Vial : 11 Sample Multiplier: 1

Instrument :
 MSVOA_D
 ClientSampled :

Quant Time: May 16 03:58:37 2019
 Quant Method : Z:\VOASRV\HPCHEM1\MSVOA_D\METHOD\82D050719S.M
 Quant Title : SW846 8260
 QLast Update : Tue May 07 14:26:29 2019
 Response via : Initial Calibration

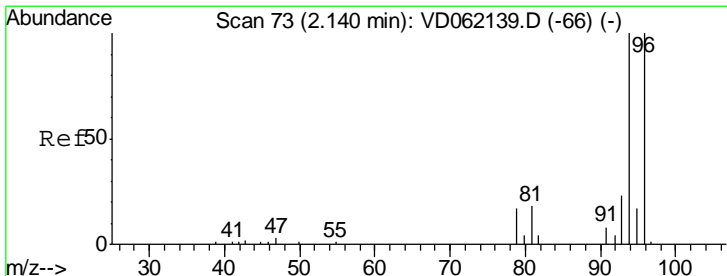
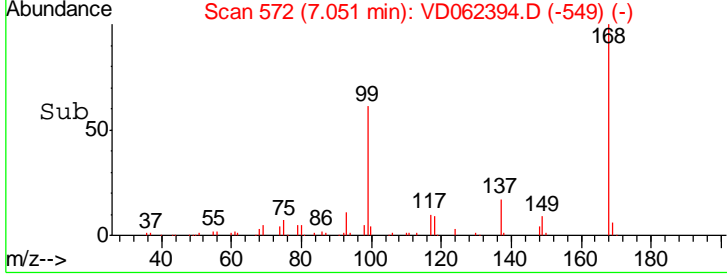
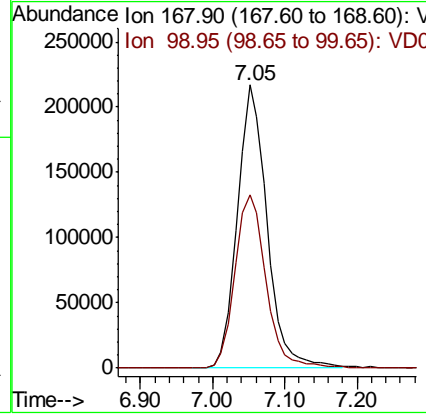
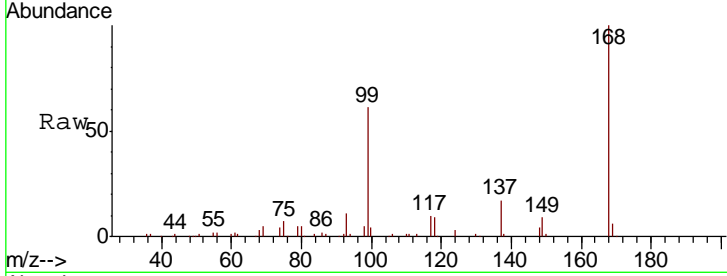




#1
 Pentafluorobenzene
 Concen: 50.000 ug/l
 RT: 7.05 min Scan# 572
 Delta R.T. 0.03 min
 Lab File: VD062394.D
 Acq: 15 May 2019 18:01

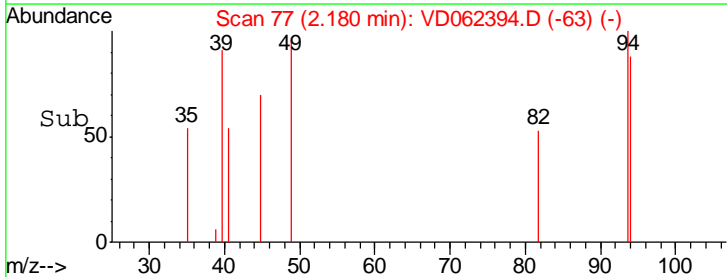
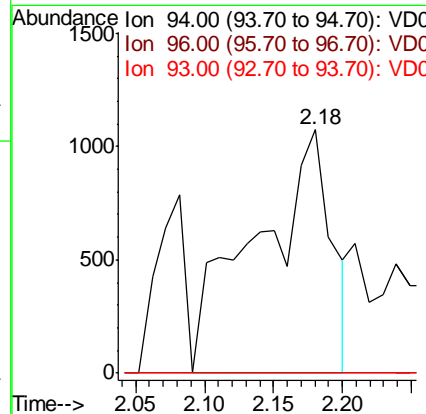
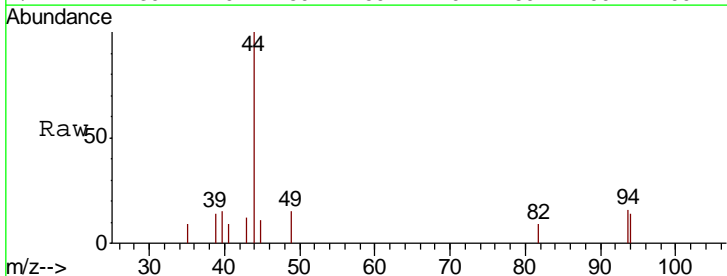
Instrument :
 MSVOA_D
 ClientSampled :

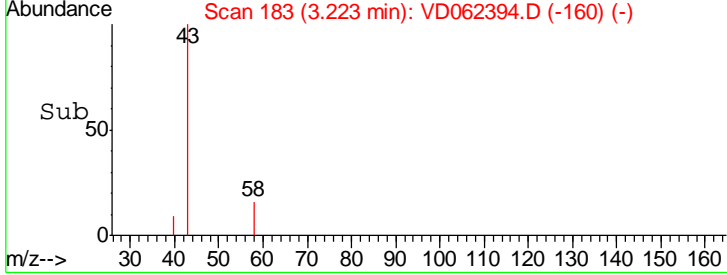
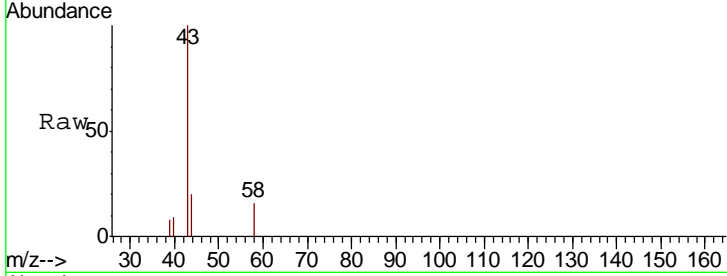
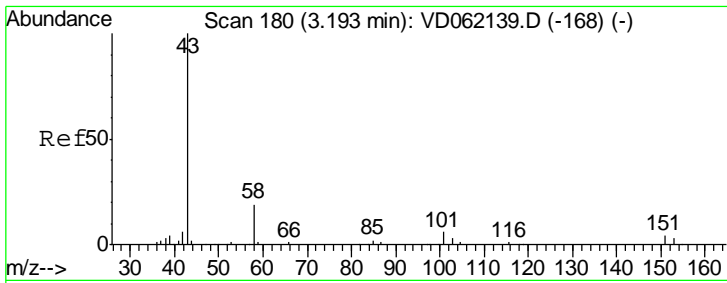
Tgt Ion: 168 Resp: 623200
 Ion Ratio Lower Upper
 168 100
 99 61.1 46.5 69.7



#5
 Bromomethane
 Concen: 4.099 ug/l
 RT: 2.18 min Scan# 77
 Delta R.T. 0.04 min
 Lab File: VD062394.D
 Acq: 15 May 2019 18:01

Tgt Ion: 94 Resp: 4065
 Ion Ratio Lower Upper
 94 100
 96 0.0 76.6 115.0#
 93 53.2 18.5 27.7#

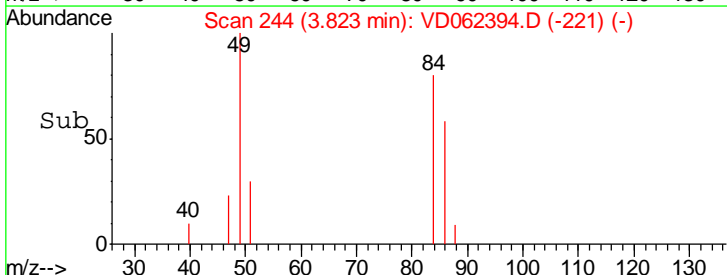
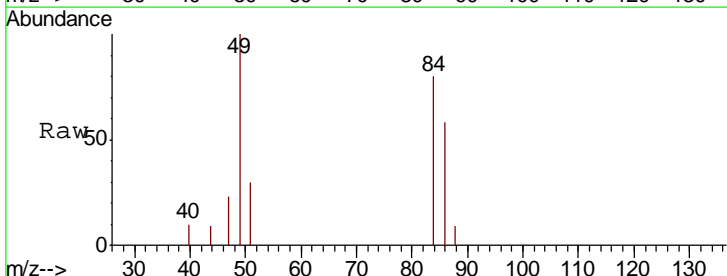
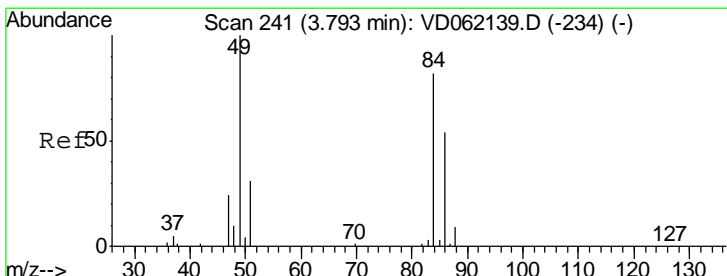
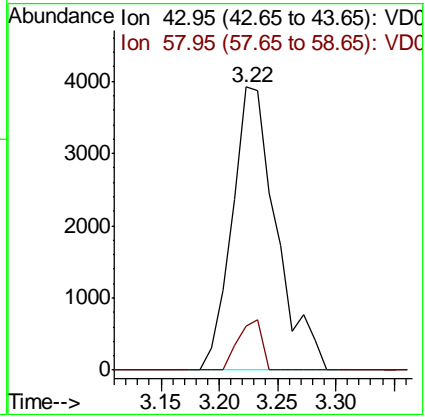




#16
 Acetone
 Concen: 8.486 ug/l
 RT: 3.22 min Scan# 183
 Delta R.T. 0.03 min
 Lab File: VD062394.D
 Acq: 15 May 2019 18:01

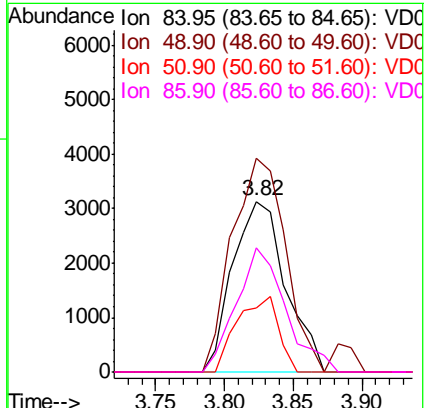
Instrument :
 MSVOA_D
 ClientSampled :

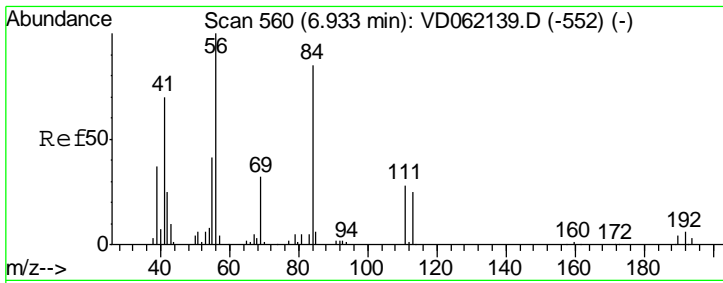
Tgt Ion	Resp	Lower	Upper
43	10307		
58	15.7	19.9	29.9#



#20
 Methylene Chloride
 Concen: 1.652 ug/l
 RT: 3.82 min Scan# 244
 Delta R.T. 0.03 min
 Lab File: VD062394.D
 Acq: 15 May 2019 18:01

Tgt Ion	Resp	Lower	Upper
84	8378		
49	125.2	94.0	141.0
51	37.9	29.0	43.4
86	72.7	49.8	74.6

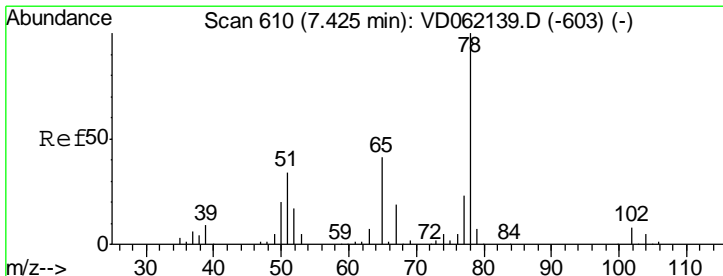
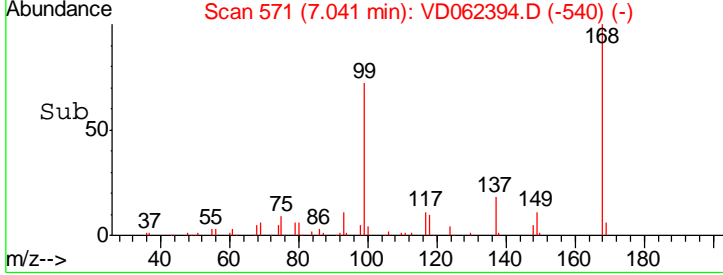
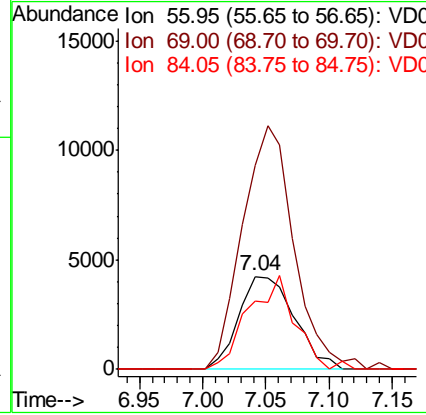
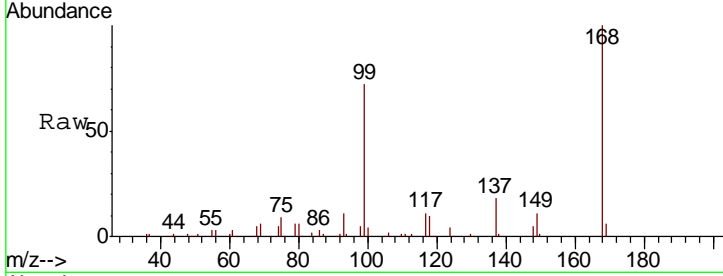




#31
 Cyclohexane
 Concen: 2.133 ug/l
 RT: 7.04 min Scan# 571
 Delta R.T. 0.11 min
 Lab File: VD062394.D
 Acq: 15 May 2019 18:01

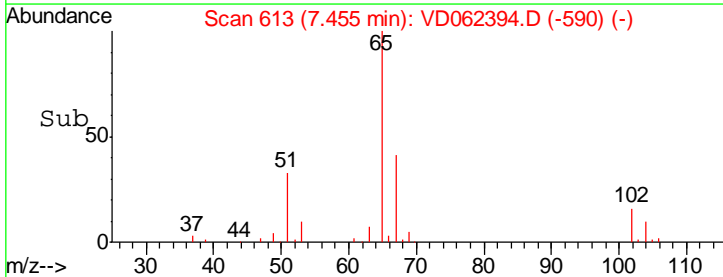
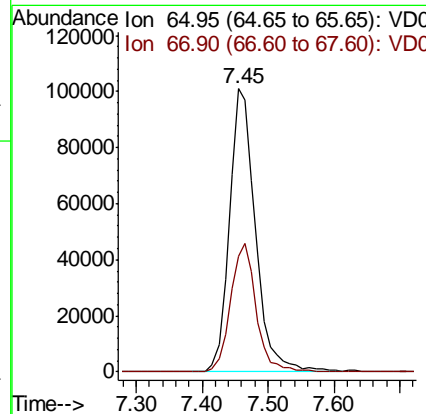
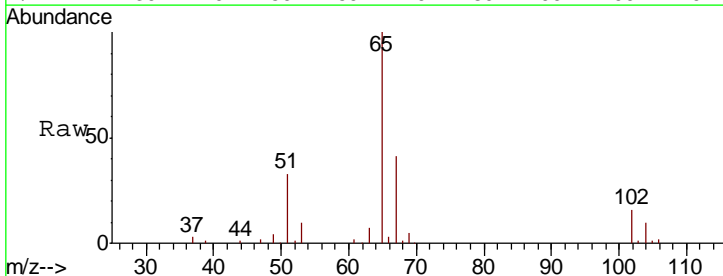
Instrument :
 MSVOA_D
 ClientSampled :

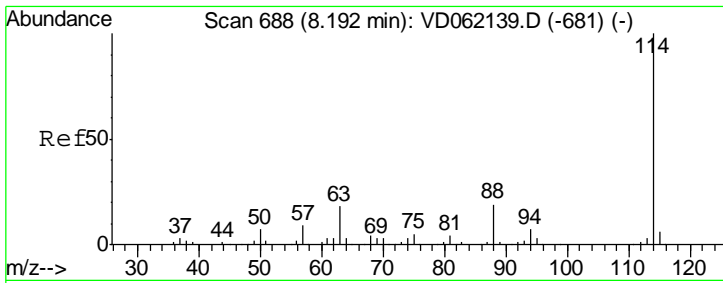
Tgt Ion	Resp	Lower	Upper
56	12962		
69	218.8	25.8	38.6#
84	73.2	72.2	108.4



#33
 1,2-Dichloroethane-d4
 Concen: 48.091 ug/l
 RT: 7.45 min Scan# 613
 Delta R.T. 0.03 min
 Lab File: VD062394.D
 Acq: 15 May 2019 18:01

Tgt Ion	Resp	Lower	Upper
65	278518		
67	40.9	0.0	98.0

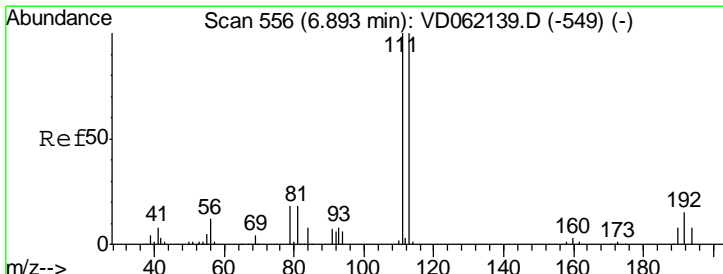
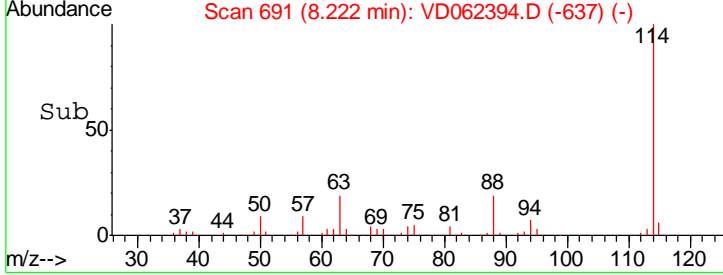
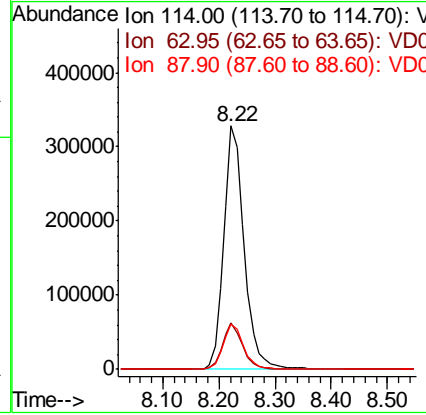
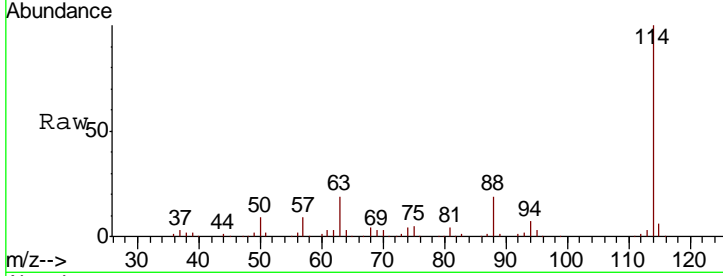




#34
 1,4-Difluorobenzene
 Concen: 50.000 ug/l
 RT: 8.22 min Scan# 691
 Delta R.T. 0.03 min
 Lab File: VD062394.D
 Acq: 15 May 2019 18:01

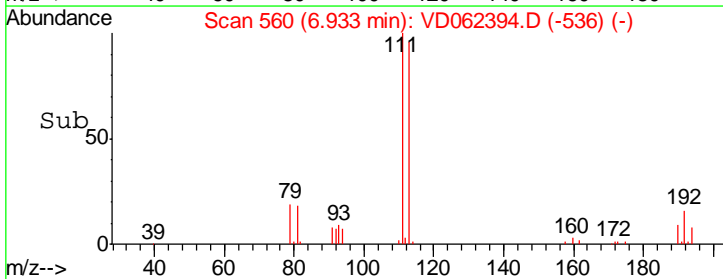
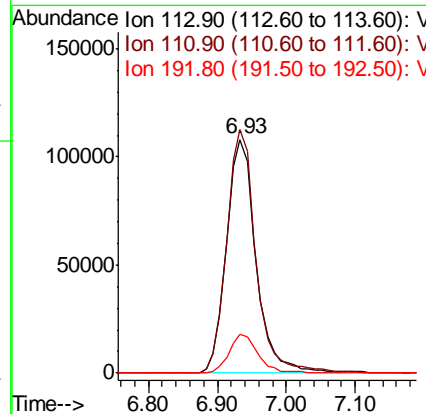
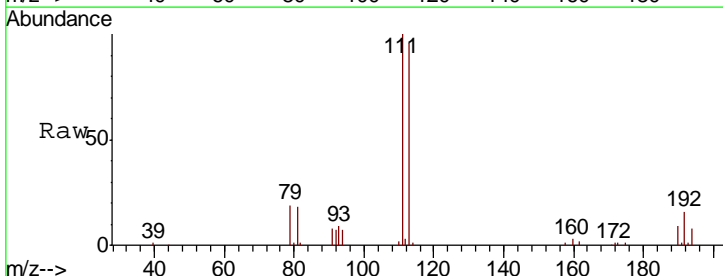
Instrument : MSVOA_D
 ClientSampled :

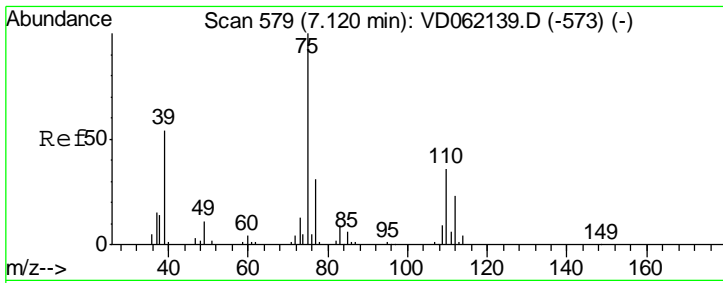
Tgt Ion	Resp	Lower	Upper
114	100		
63	19.2	0.0	32.4
88	18.5	0.0	33.6



#35
 Dibromofluoromethane
 Concen: 46.461 ug/l
 RT: 6.93 min Scan# 560
 Delta R.T. 0.04 min
 Lab File: VD062394.D
 Acq: 15 May 2019 18:01

Tgt Ion	Resp	Lower	Upper
113	100		
111	104.3	78.5	117.7
192	16.7	13.0	19.4

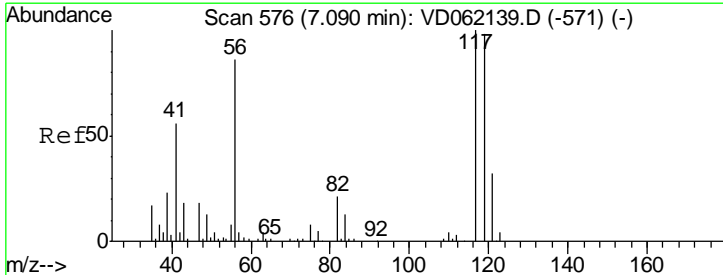
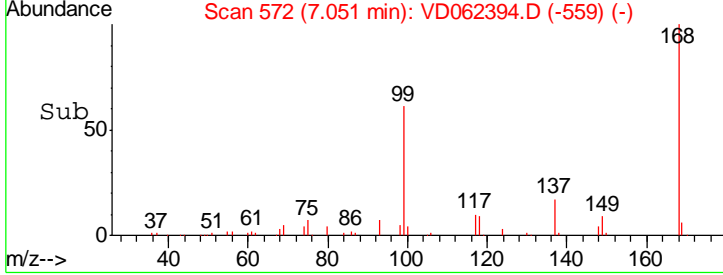
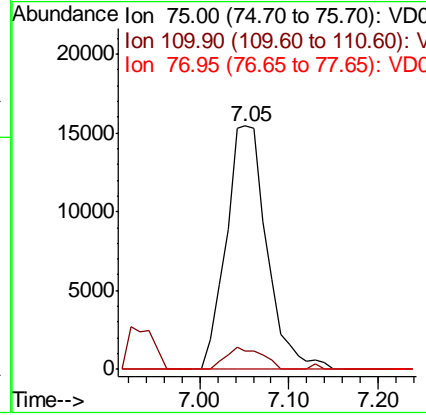
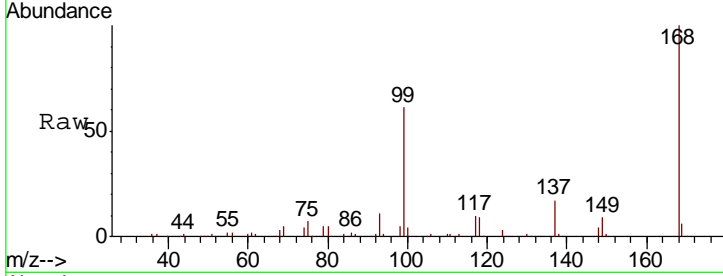




#36
 1,1-Dichloropropene
 Concen: 7.205 ug/l
 RT: 7.05 min Scan# 572
 Delta R.T. -0.07 min
 Lab File: VD062394.D
 Acq: 15 May 2019 18:01

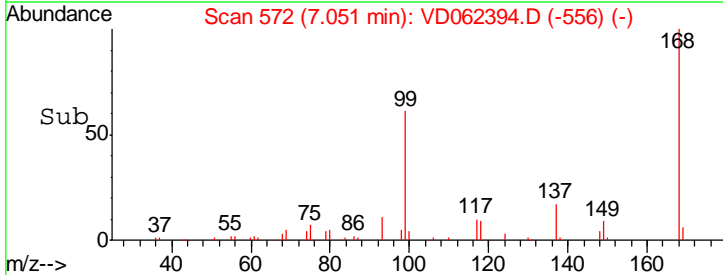
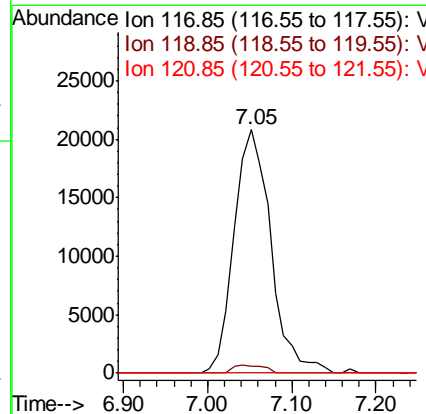
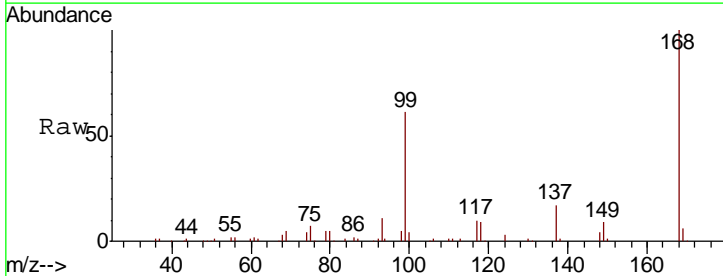
Instrument : MSVOA_D
 ClientSampled :

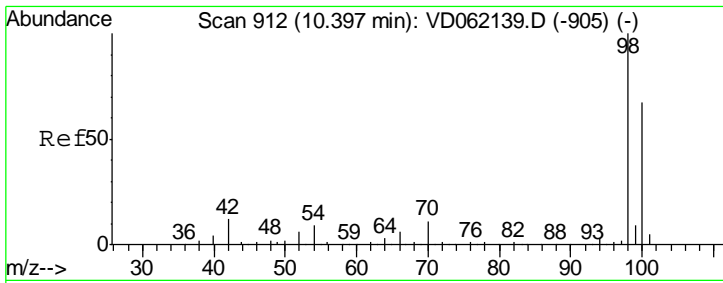
Tgt Ion	Resp	Lower	Upper
75	49279		
110	7.5	19.1	57.1#
77	0.0	25.6	38.4#



#38
 Carbon Tetrachloride
 Concen: 6.673 ug/l
 RT: 7.05 min Scan# 572
 Delta R.T. -0.04 min
 Lab File: VD062394.D
 Acq: 15 May 2019 18:01

Tgt Ion	Resp	Lower	Upper
117	63170		
119	3.0	75.8	113.8#
121	0.0	25.9	38.9#

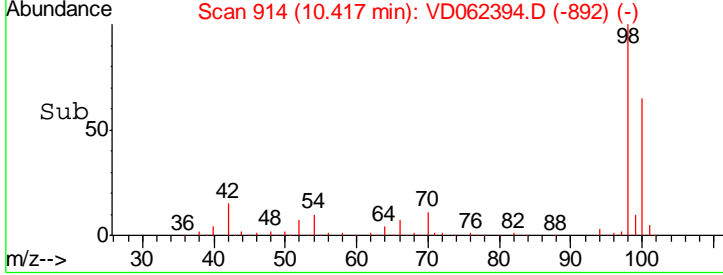
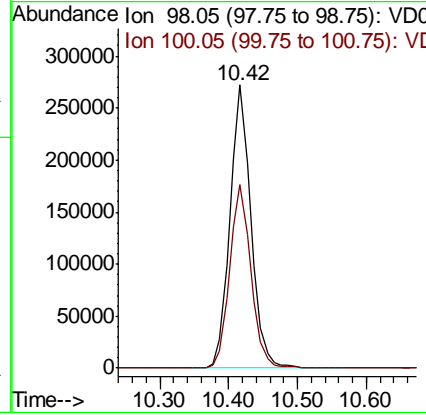
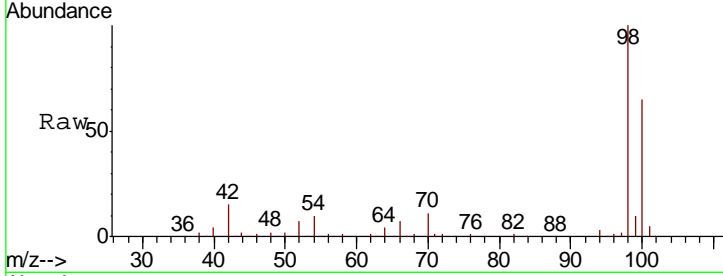




#50
 Toluene-d8
 Concen: 34.248 ug/l
 RT: 10.42 min Scan# 914
 Delta R.T. 0.02 min
 Lab File: VD062394.D
 Acq: 15 May 2019 18:01

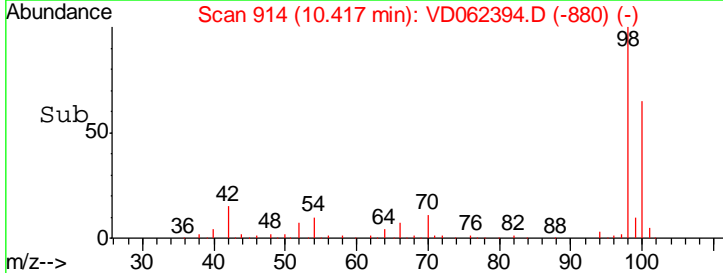
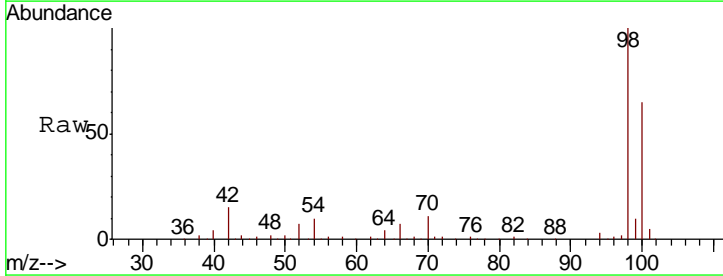
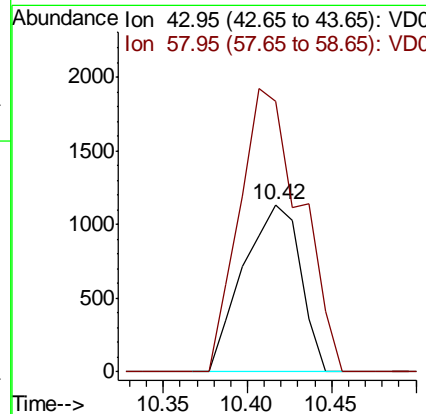
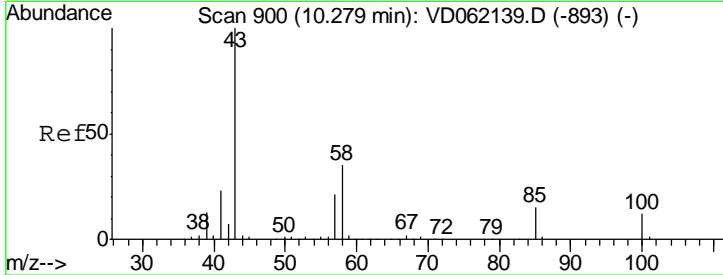
Instrument :
 MSVOA_D
 ClientSampled :

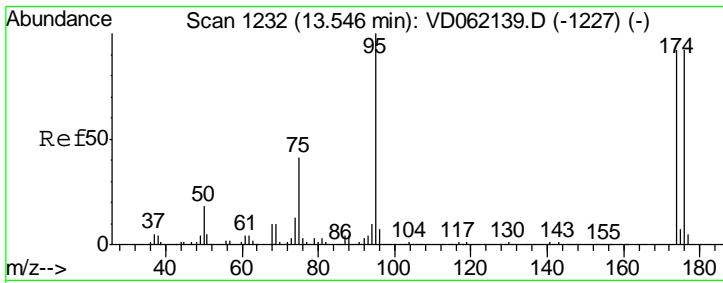
Tgt Ion	Resp	Lower	Upper
98	100		
100	65.0	53.8	80.8



#51
 4-Methyl-2-Pentanone
 Concen: 1.004 ug/l
 RT: 10.42 min Scan# 914
 Delta R.T. 0.14 min
 Lab File: VD062394.D
 Acq: 15 May 2019 18:01

Tgt Ion	Resp	Lower	Upper
43	100		
58	162.1	30.4	45.6#

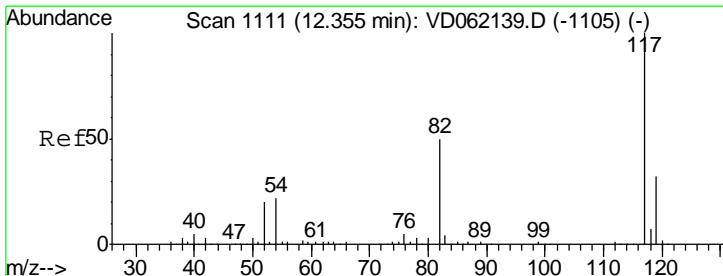
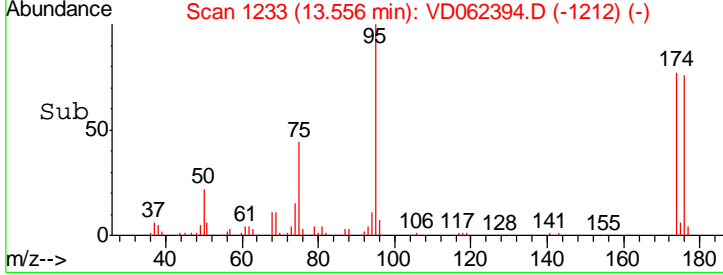
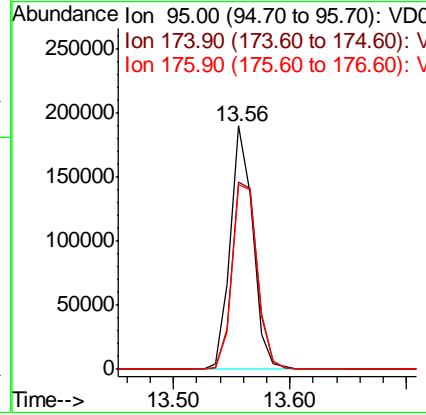
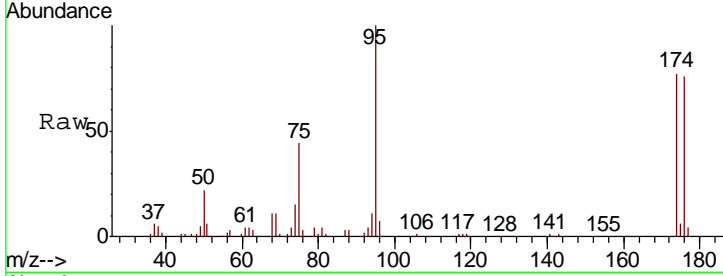




#62
 4-Bromofluorobenzene
 Concen: 38.051 ug/l
 RT: 13.56 min Scan# 1233
 Delta R.T. 0.01 min
 Lab File: VD062394.D
 Acq: 15 May 2019 18:01

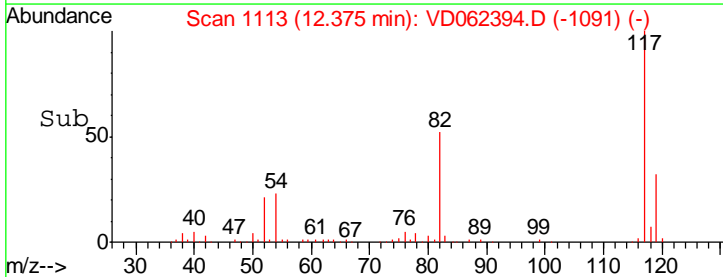
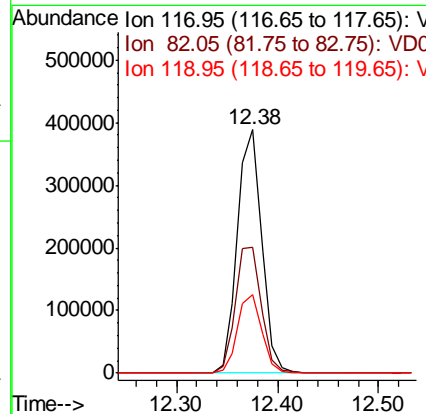
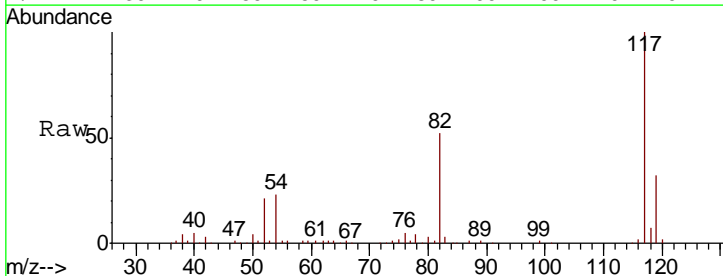
Instrument :
 MSVOA_D
 ClientSampled :

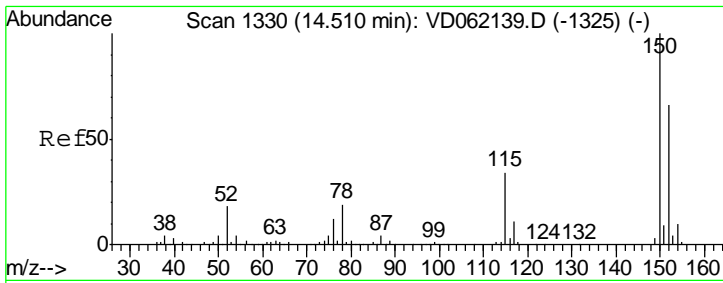
Tgt Ion	Resp	Lower	Upper
95	100		
174	76.8	0.0	181.8
176	76.0	0.0	174.4



#63
 Chlorobenzene-d5
 Concen: 50.000 ug/l
 RT: 12.38 min Scan# 1113
 Delta R.T. 0.02 min
 Lab File: VD062394.D
 Acq: 15 May 2019 18:01

Tgt Ion	Resp	Lower	Upper
117	100		
82	51.8	36.2	54.2
119	32.4	26.2	39.4

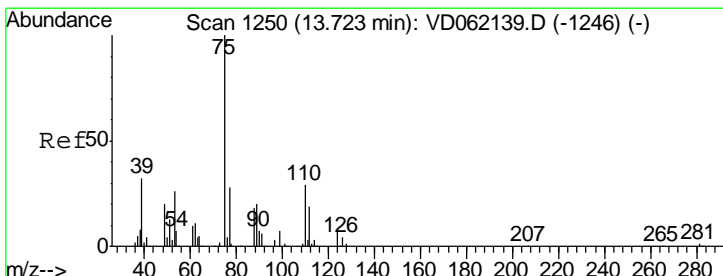
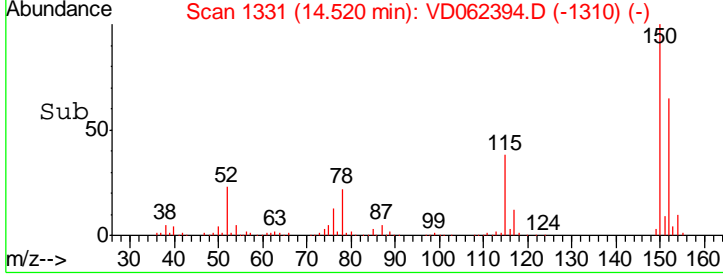
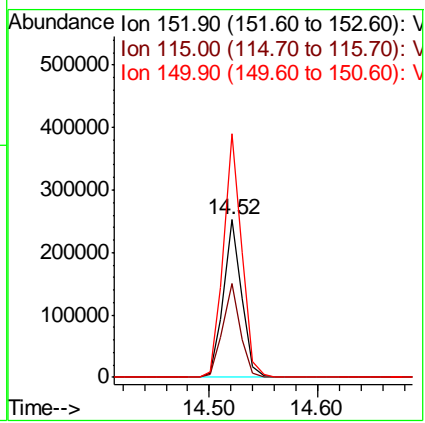
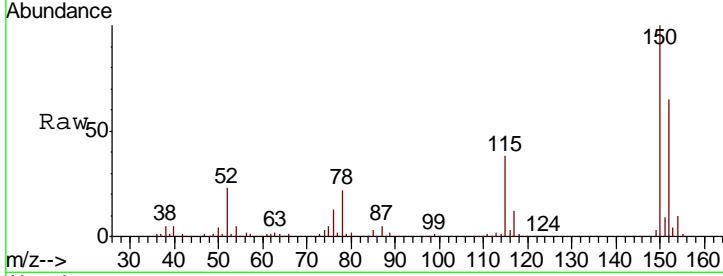




#72
 1,4-Dichlorobenzene-d4
 Concen: 50.000 ug/l
 RT: 14.52 min Scan# 1331
 Delta R.T. 0.01 min
 Lab File: VD062394.D
 Acq: 15 May 2019 18:01

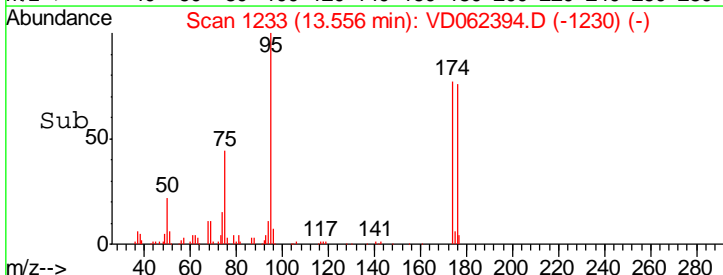
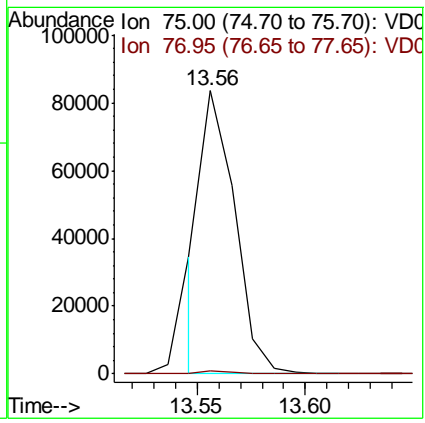
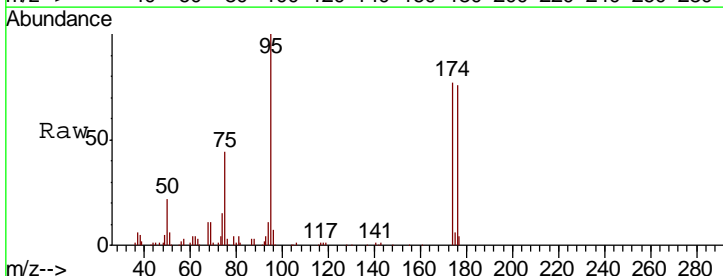
Instrument : MSVOA_D
 ClientSampled :

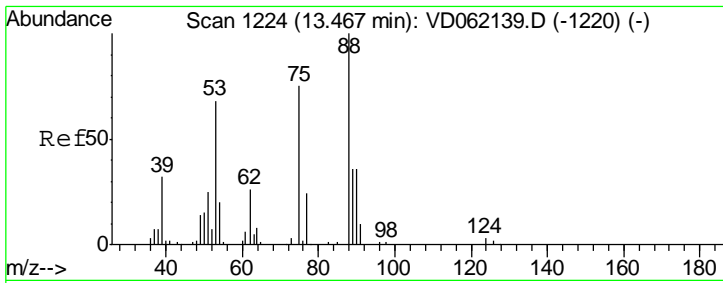
Tgt Ion	Resp	Lower	Upper
152	100		
115	59.4	30.9	92.7
150	154.6	0.0	314.8



#76
 1,2,3-Trichloropropane
 Concen: 25.582 ug/l
 RT: 13.56 min Scan# 1233
 Delta R.T. -0.17 min
 Lab File: VD062394.D
 Acq: 15 May 2019 18:01

Tgt Ion	Resp	Lower	Upper
75	100		
77	0.9	16.4	49.4#

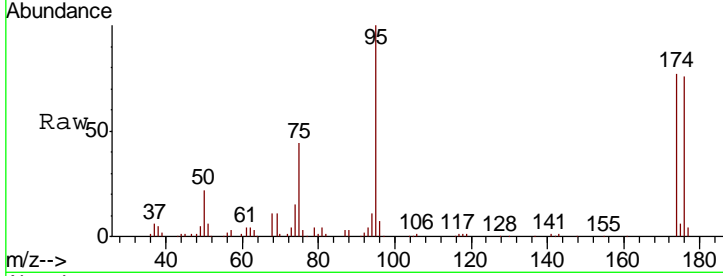




#81
 trans-1,4-Dichloro-2-butene
 Concen: 112.880 ug/l
 RT: 13.56 min Scan# 1233
 Delta R.T. 0.09 min
 Lab File: VD062394.D
 Acq: 15 May 2019 18:01

Instrument :
 MSVOA_D
 ClientSampled :

Tot Ion	Resp	Lower	Upper
75	100		
53	0.0	65.8	98.8#
89	0.0	35.0	52.6#



Abundance Ion 75.00 (74.70 to 75.70): VDC
 Ion 53.00 (52.70 to 53.70): VDC
 Ion 89.00 (88.70 to 89.70): VDC

