

Data Path : Z:\VOASRV\HPCHEM1\MSVOA D\DATA\VD051519\
 Data File : VD062408.D
 Acq On : 16 May 2019 00:31
 Operator : FY/SY
 Sample : K2866-04
 Misc : 6.55µ/5mL/MSVOA D/SOIL
 ALS Vial : 25 Sample Multiplier: 1

Instrument :
 MSVOA_D
 ClientSampleID :
 RO-COMP-2

Quant Time: May 16 04:01:26 2019
 Quant Method : Z:\VOASRV\HPCHEM1\MSVOA_D\METHOD\82D050719S.M
 Quant Title : SW846 8260
 QLast Update : Tue May 07 14:26:29 2019
 Response via : Initial Calibration

Internal Standards	R.T.	QIon	Response	Conc	Units	Dev(Min)
1) Pentafluorobenzene	7.05	168	15736	50.00	µg/l	0.03
34) 1,4-Difluorobenzene	8.22	114	23576	50.00	µg/l	0.03
63) Chlorobenzene-d5	12.37	117	19865	50.00	µg/l	0.02
72) 1,4-Dichlorobenzene-d4	14.52	152	8894	50.00	µg/l	0.00

System Monitoring Compounds

33) 1,2-Dichloroethane-d4	7.45	65	9460	64.69	µg/l	0.03
Spiked Amount	50.000		Recovery	= 129.38%		
35) Dibromofluoromethane	6.92	113	8754	44.75	µg/l	0.03
Spiked Amount	50.000		Recovery	= 89.50%		
50) Toluene-d8	10.42	98	15892	33.70	µg/l	0.02
Spiked Amount	50.000		Recovery	= 67.40%		
62) 4-Bromofluorobenzene	13.56	95	7568	39.96	µg/l	0.00
Spiked Amount	50.000		Recovery	= 79.92%		

Target Compounds

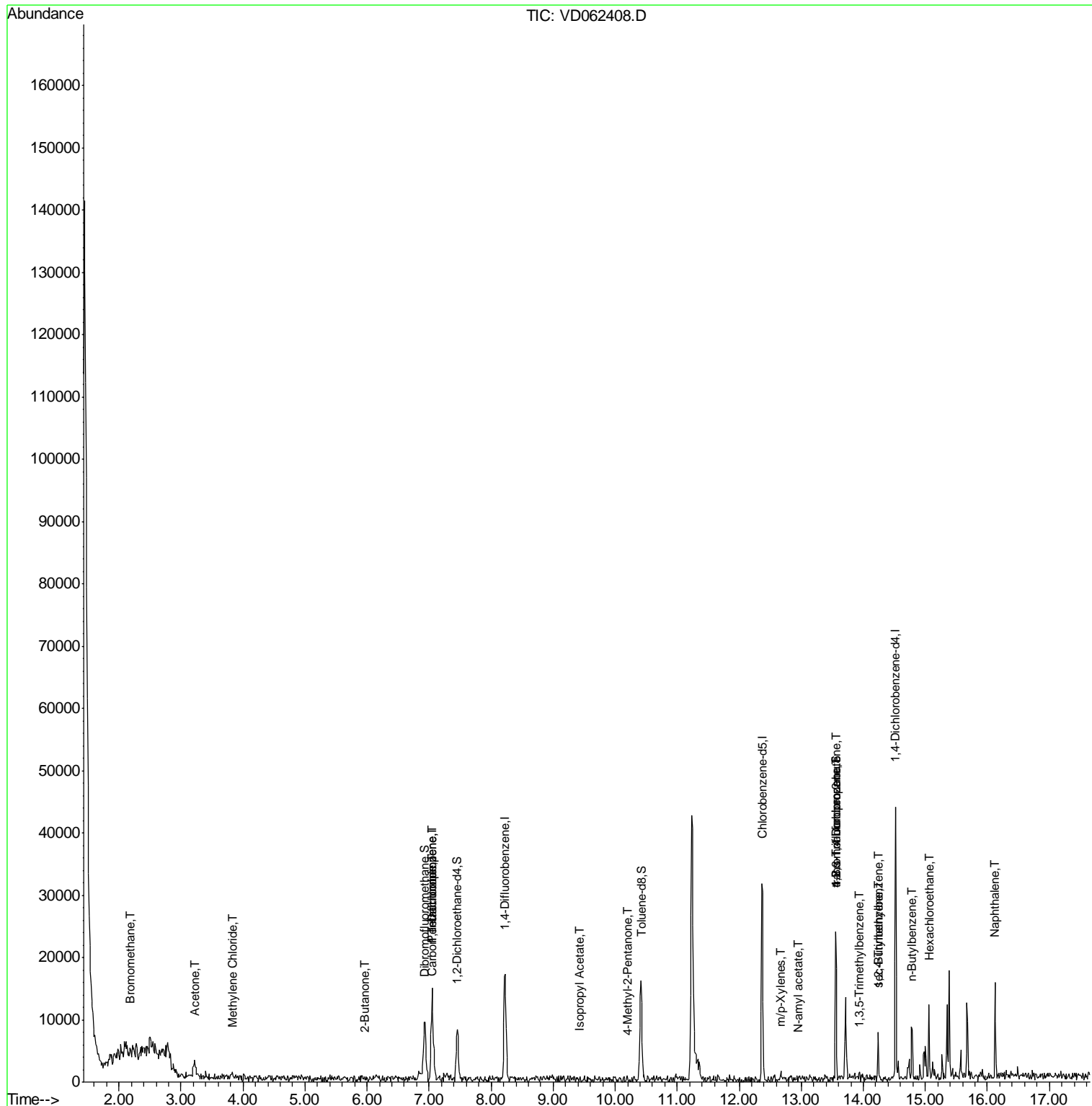
						Qvalue
5) Bromomethane	2.19	94	1131	45.163	µg/l #	12
16) Acetone	3.22	43	5062	165.061	µg/l #	50
20) Methylene Chloride	3.83	84	209	1.632	µg/l #	52
25) 2-Butanone	5.95	43	250	7.474	µg/l #	56
36) 1,1-Dichloropropene	7.06	75	955	4.940	µg/l #	40
38) Carbon Tetrachloride	7.03	117	1242	4.642	µg/l #	12
43) Isopropyl Acetate	9.42	43	205	1.763	µg/l #	43
51) 4-Methyl-2-Pentanone	10.21	43	180	2.409	µg/l #	37
68) m/p-Xylenes	12.67	106	230	1.021	µg/l	80
74) N-amyl acetate	12.96	43	309	2.211	µg/l #	49
76) 1,2,3-Trichloropropane	13.56	75	2664	25.204	µg/l #	42
80) 1,3,5-Trimethylbenzene	13.94	105	889	1.980	µg/l	85
81) trans-1,4-Dichloro-2-buten	13.56	75	3146	105.432	µg/l #	16
84) 1,2,4-Trimethylbenzene	14.24	105	3928	8.719	µg/l	92
85) sec-Butylbenzene	14.24	105	3928	7.100	µg/l #	60
89) n-Butylbenzene	14.79	91	1233	2.779	µg/l #	1
90) Hexachloroethane	15.06	117	523	3.891	µg/l #	20
95) Naphthalene	16.12	128	9712	42.566	µg/l	95

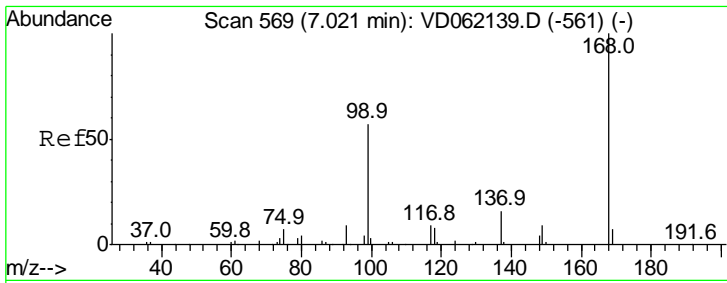
(#) = qualifier out of range (m) = manual integration (+) = signals summed

Data Path : Z:\VOASRV\HPCHEM1\MSVOA D\DATA\VD051519\
 Data File : VD062408.D
 Acq On : 16 May 2019 00:31
 Operator : FY/SY
 Sample : K2866-04
 Misc : 6.55µ/5mL/MSVOA D/SOIL
 ALS Vial : 25 Sample Multiplier: 1

Instrument :
 MSVOA_D
 Client Sample ID :
 RO-COMP-2

Quant Time: May 16 04:01:26 2019
 Quant Method : Z:\VOASRV\HPCHEM1\MSVOA_D\METHOD\82D050719S.M
 Quant Title : SW846 8260
 QLast Update : Tue May 07 14:26:29 2019
 Response via : Initial Calibration

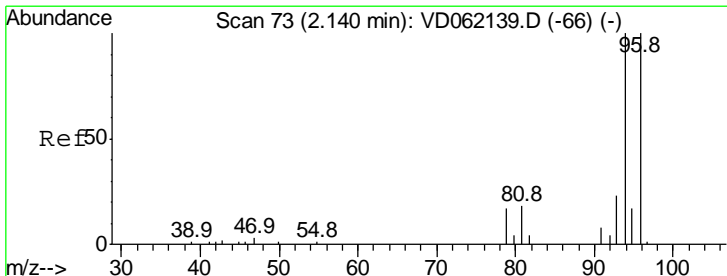
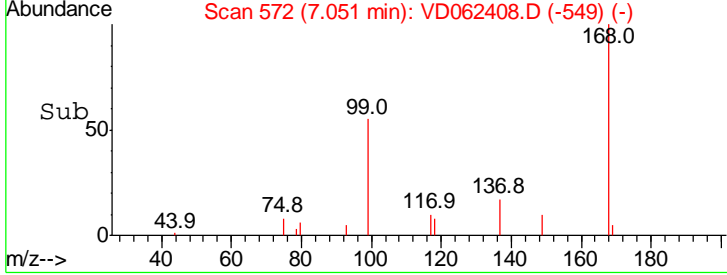
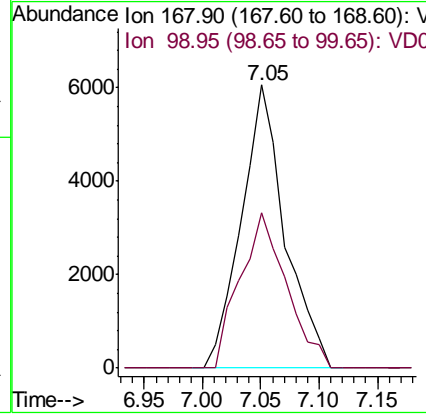
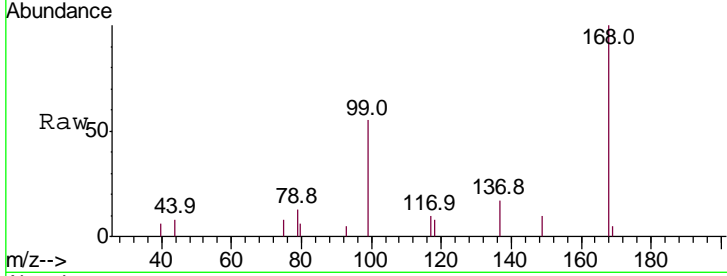




#1
 Pentafluorobenzene
 Concen: 50.000 ug/l
 RT: 7.05 min Scan# 572
 Delta R.T. 0.03 min
 Lab File: VD062408.D
 Acq: 16 May 2019 00:31

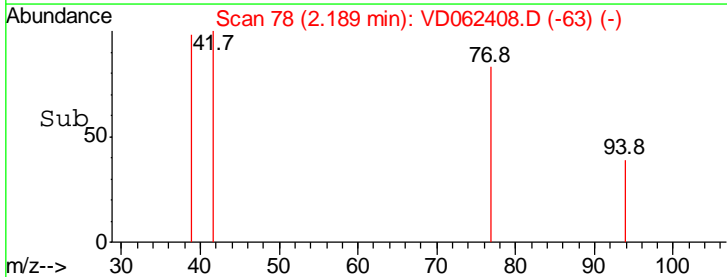
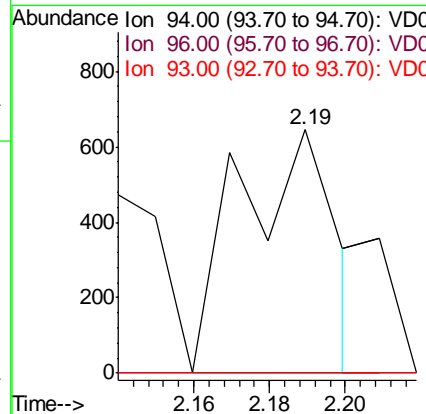
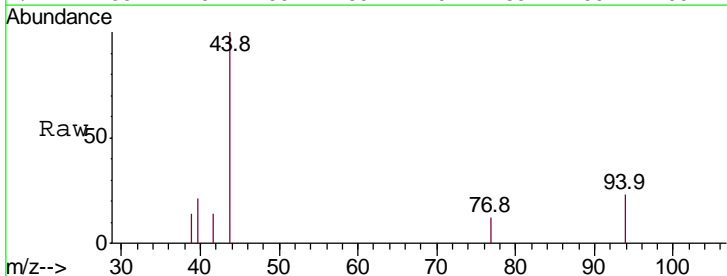
Instrument : MSVOA_D
 ClientSampleID : RO-COMP-2

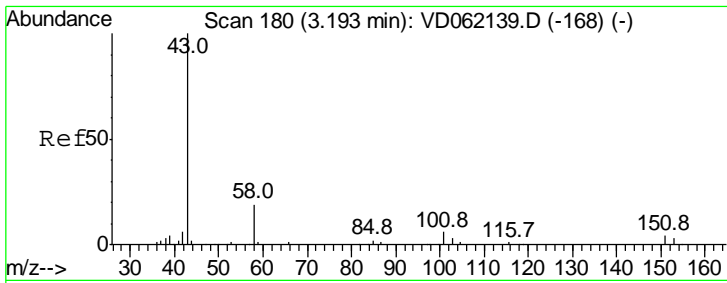
Tgt Ion	Resp	Lower	Upper
168	100		
99	54.7	46.5	69.7



#5
 Bromomethane
 Concen: 45.163 ug/l
 RT: 2.19 min Scan# 78
 Delta R.T. 0.05 min
 Lab File: VD062408.D
 Acq: 16 May 2019 00:31

Tgt Ion	Resp	Lower	Upper
94	100		
96	0.0	76.6	115.0#
93	0.0	18.5	27.7#

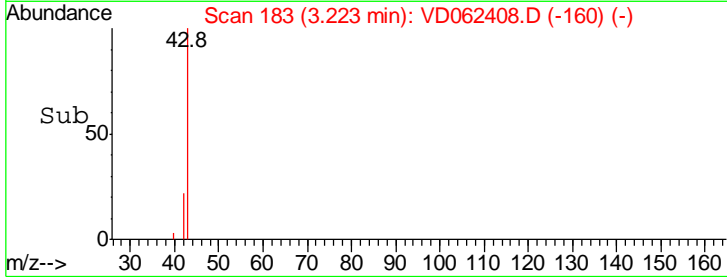
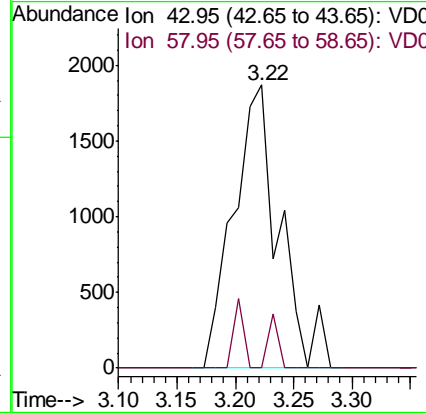
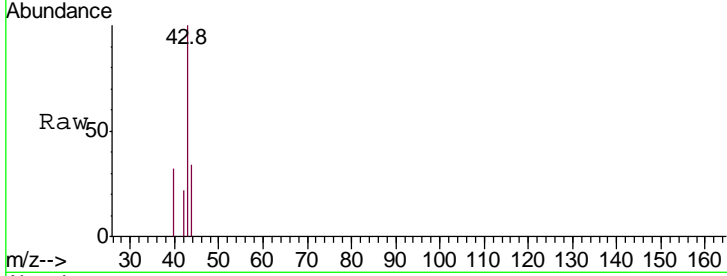




#16
 Acetone
 Concen: 165.061 ug/l
 RT: 3.22 min Scan# 183
 Delta R.T. 0.03 min
 Lab File: VD062408.D
 Acq: 16 May 2019 00:31

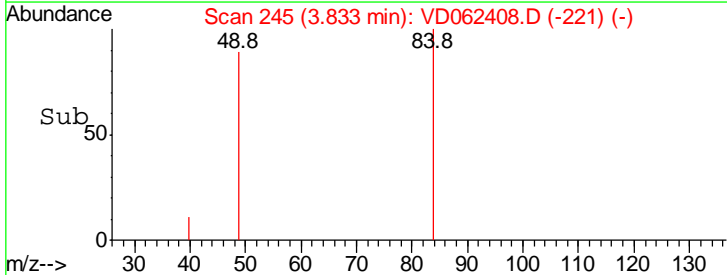
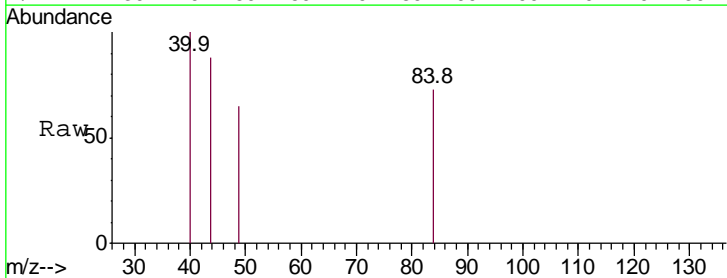
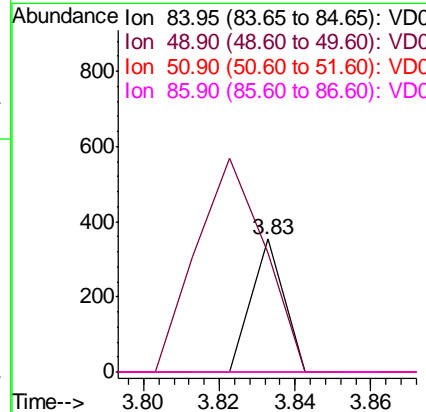
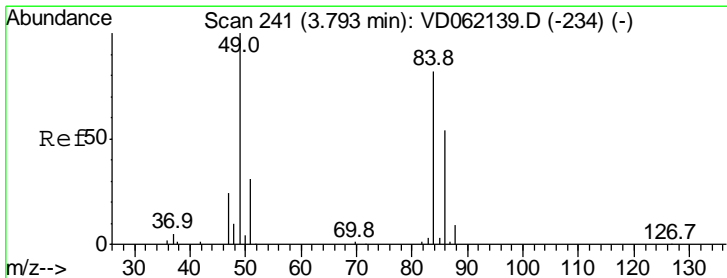
Instrument :
 MSVOA_D
 ClientSampled :
 RO-COMP-2

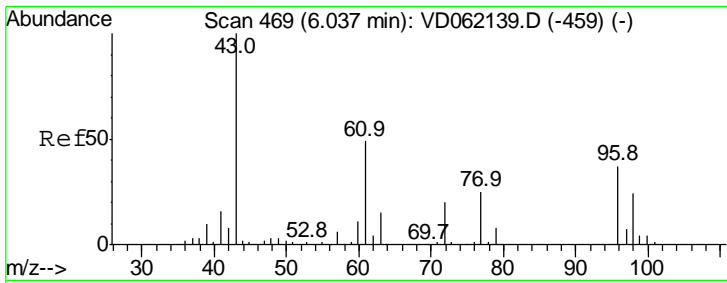
Tgt Ion: 43 Resp: 5062
 Ion Ratio Lower Upper
 43 100
 58 0.0 19.9 29.9#



#20
 Methylene Chloride
 Concen: 1.632 ug/l
 RT: 3.83 min Scan# 245
 Delta R.T. 0.04 min
 Lab File: VD062408.D
 Acq: 16 May 2019 00:31

Tgt Ion: 84 Resp: 209
 Ion Ratio Lower Upper
 84 100
 49 89.3 94.0 141.0#
 51 0.0 29.0 43.4#
 86 0.0 49.8 74.6#

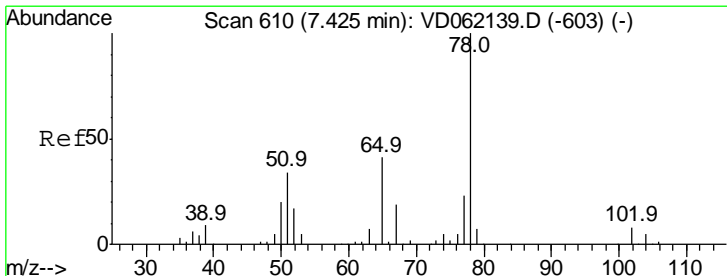
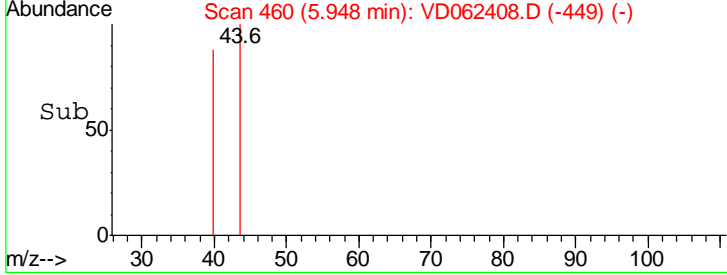
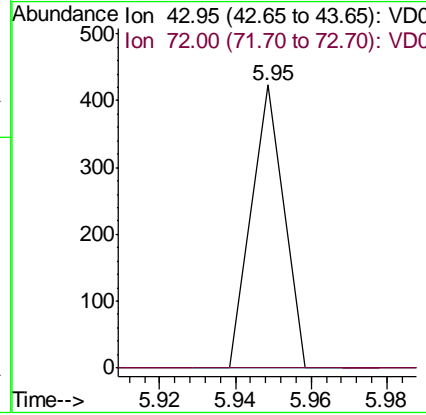
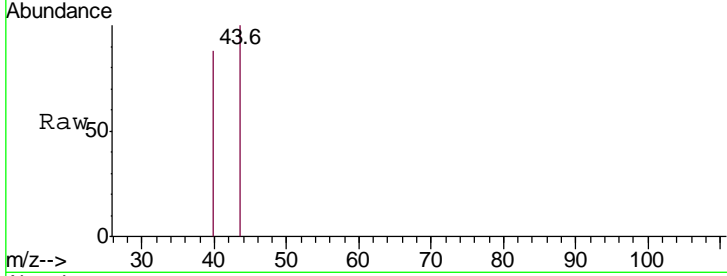




#25
 2-Butanone
 Concen: 7.474 ug/l
 RT: 5.95 min Scan# 460
 Delta R.T. -0.09 min
 Lab File: VD062408.D
 Acq: 16 May 2019 00:31

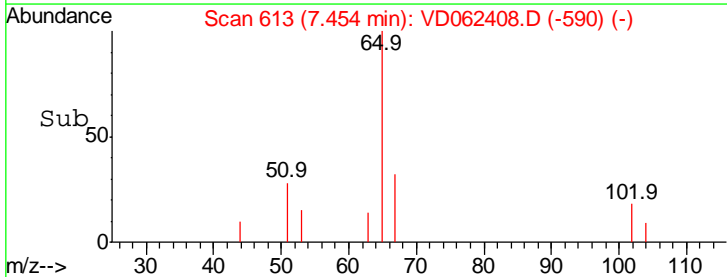
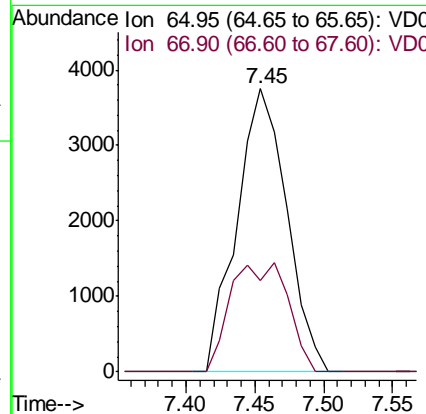
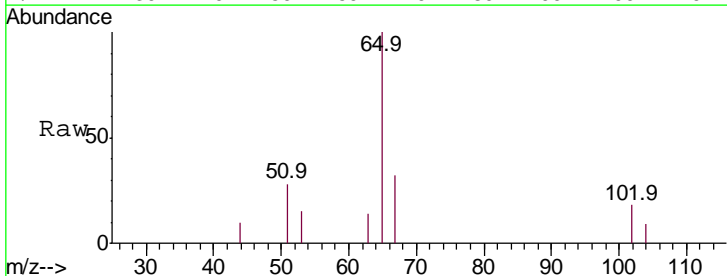
Instrument :
 MSVOA_D
 ClientSampleId :
 RO-COMP-2

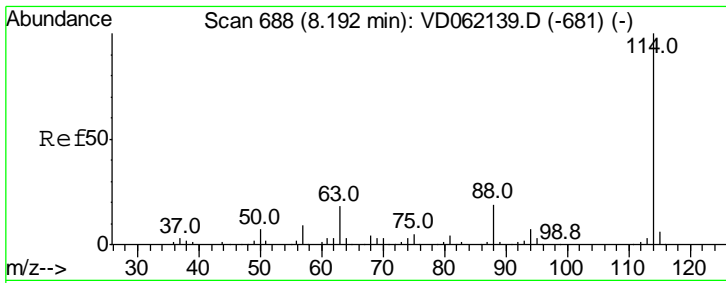
Tgt Ion: 43 Resp: 250
 Ion Ratio Lower Upper
 43 100
 72 0.0 16.2 24.4#



#33
 1,2-Dichloroethane-d4
 Concen: 64.690 ug/l
 RT: 7.45 min Scan# 613
 Delta R.T. 0.03 min
 Lab File: VD062408.D
 Acq: 16 May 2019 00:31

Tgt Ion: 65 Resp: 9460
 Ion Ratio Lower Upper
 65 100
 67 32.3 0.0 98.0

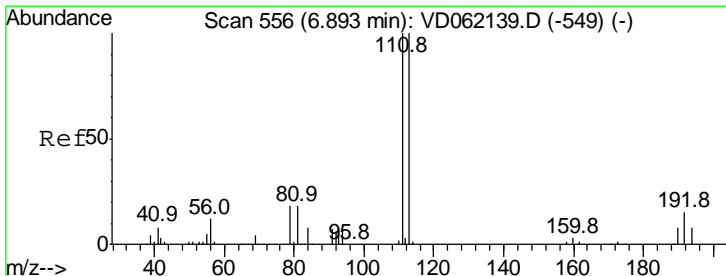
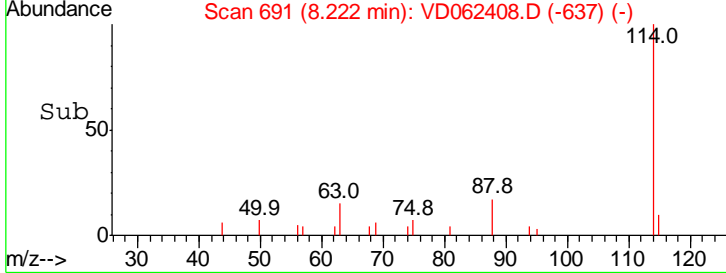
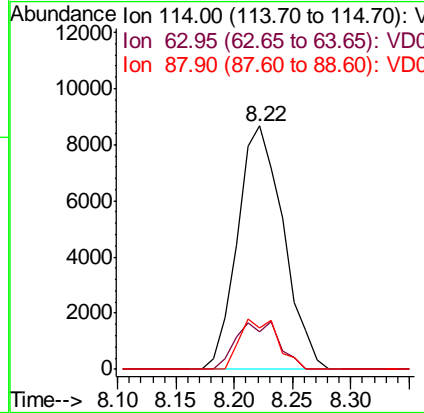
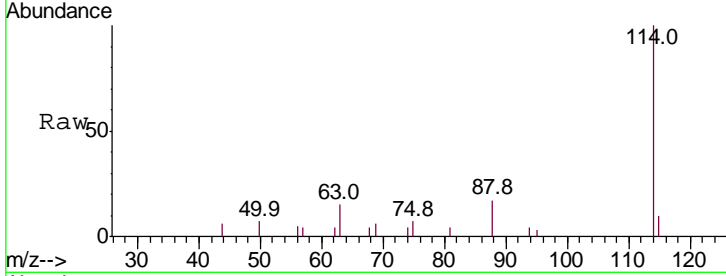




#34
 1,4-Difluorobenzene
 Concen: 50.000 ug/l
 RT: 8.22 min Scan# 691
 Delta R.T. 0.03 min
 Lab File: VD062408.D
 Acq: 16 May 2019 00:31

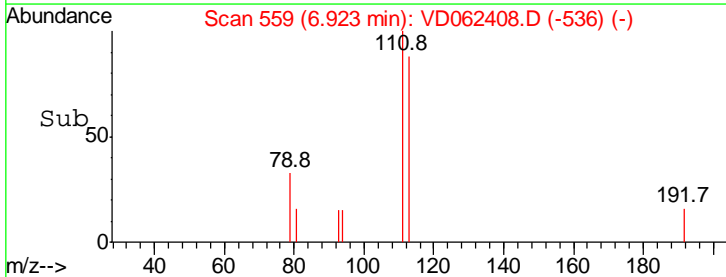
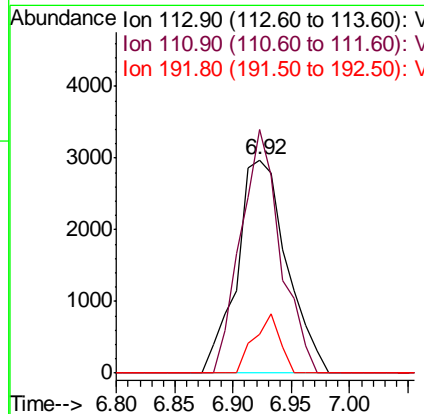
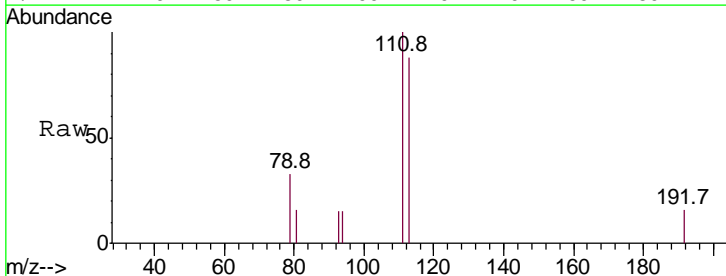
Instrument :
 MSVOA_D
 ClientSampleID :
 RO-COMP-2

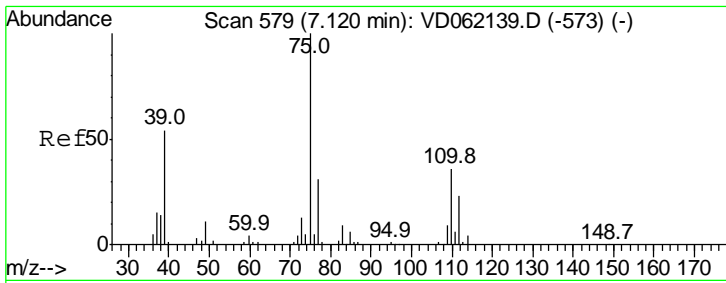
Tgt Ion	Resp	Lower	Upper
114	100		
63	15.2	0.0	32.4
88	16.9	0.0	33.6



#35
 Dibromofluoromethane
 Concen: 44.752 ug/l
 RT: 6.92 min Scan# 559
 Delta R.T. 0.03 min
 Lab File: VD062408.D
 Acq: 16 May 2019 00:31

Tgt Ion	Resp	Lower	Upper
113	100		
111	114.0	78.5	117.7
192	18.3	13.0	19.4

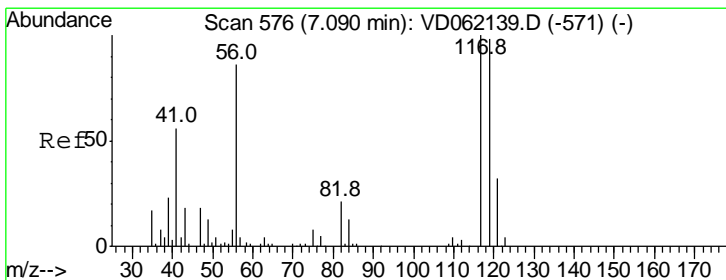
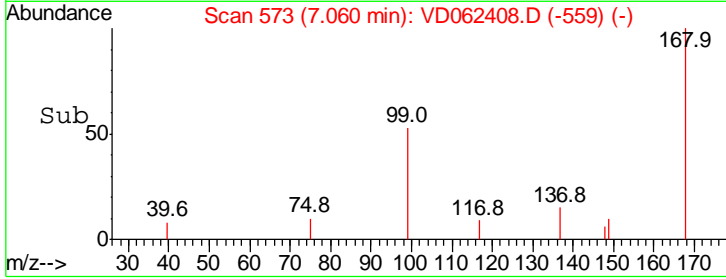
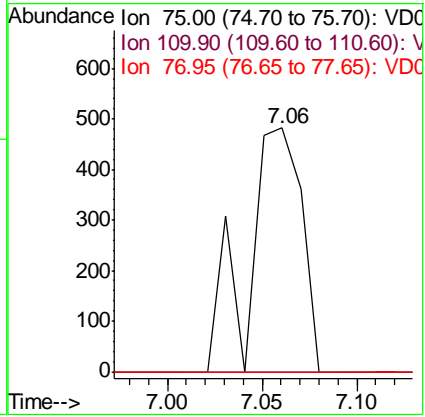
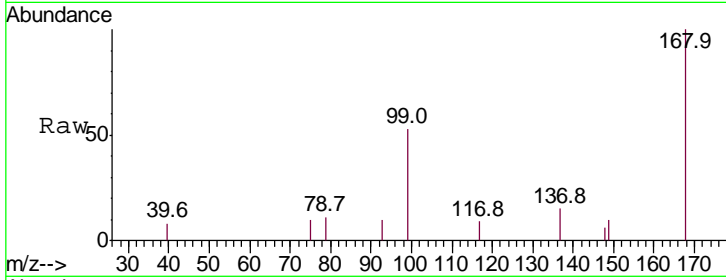




#36
 1,1-Dichloropropene
 Concen: 4.940 ug/l
 RT: 7.06 min Scan# 573
 Delta R.T. -0.06 min
 Lab File: VD062408.D
 Acq: 16 May 2019 00:31

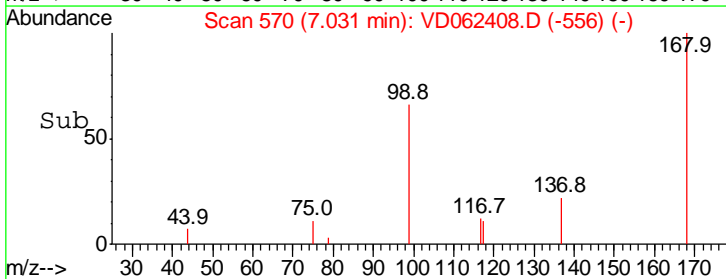
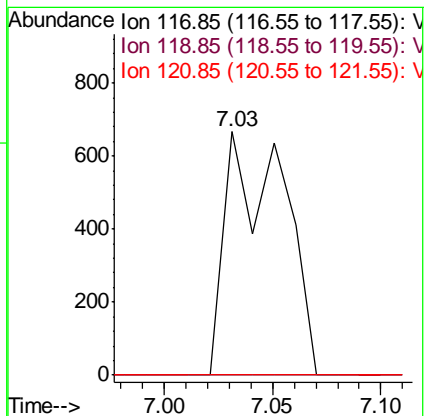
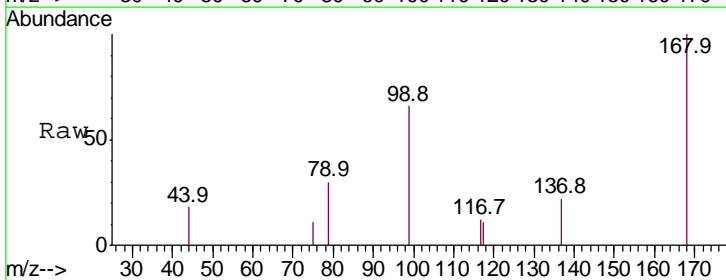
Instrument : MSVOA_D
 ClientSampled : RO-COMP-2

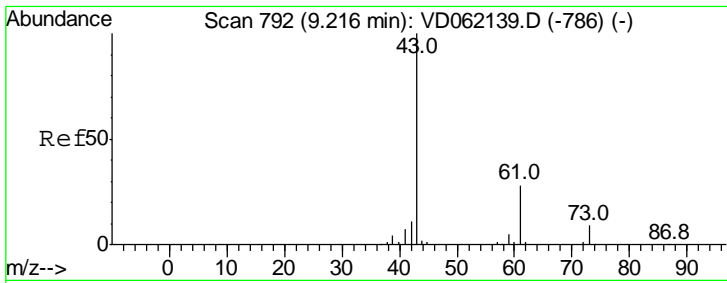
Tgt Ion	Resp	Lower	Upper
75	100		
110	0.0	19.1	57.1#
77	0.0	25.6	38.4#



#38
 Carbon Tetrachloride
 Concen: 4.642 ug/l
 RT: 7.03 min Scan# 570
 Delta R.T. -0.06 min
 Lab File: VD062408.D
 Acq: 16 May 2019 00:31

Tgt Ion	Resp	Lower	Upper
117	100		
119	0.0	75.8	113.8#
121	0.0	25.9	38.9#

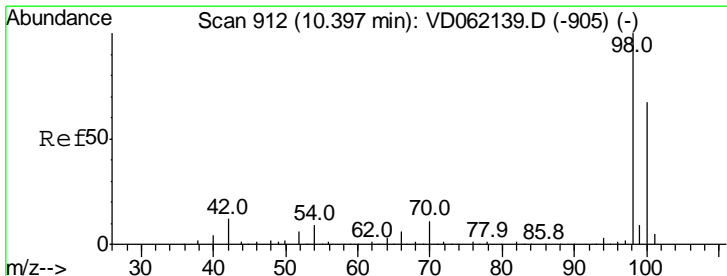
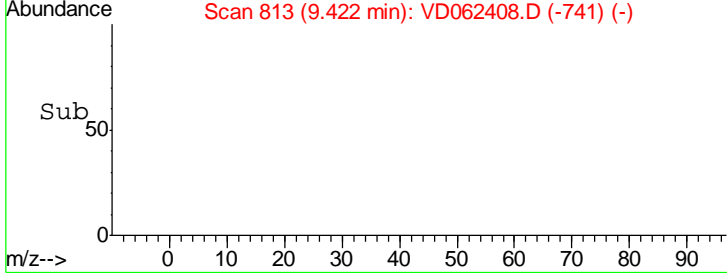
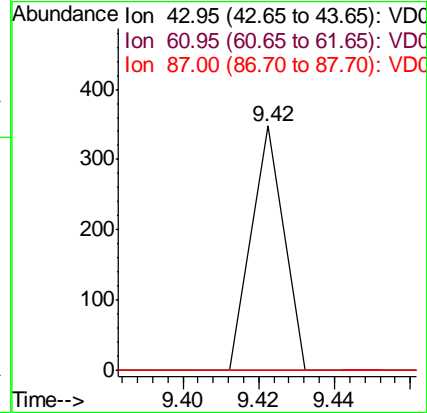
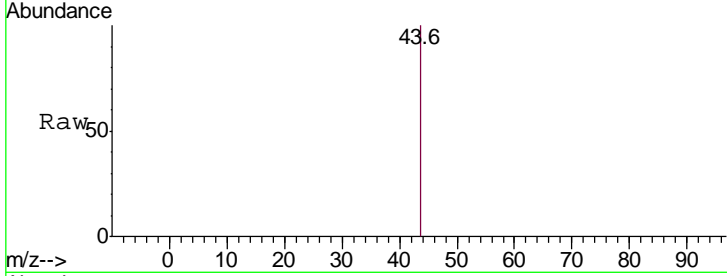




#43
 Isopropyl Acetate
 Concen: 1.763 ug/l
 RT: 9.42 min Scan# 813
 Delta R.T. 0.21 min
 Lab File: VD062408.D
 Acq: 16 May 2019 00:31

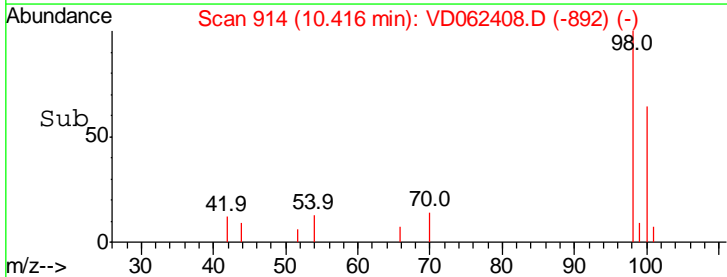
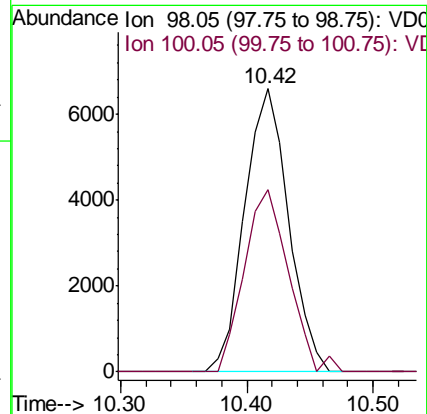
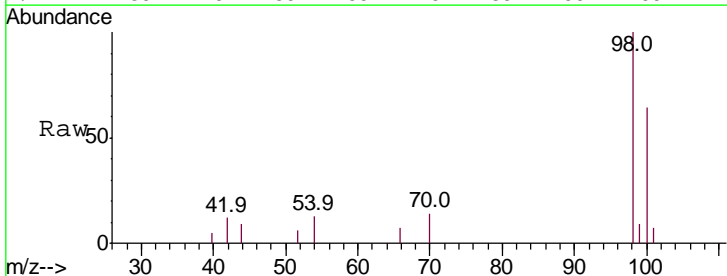
Instrument : MSVOA_D
 ClientSampled : RO-COMP-2

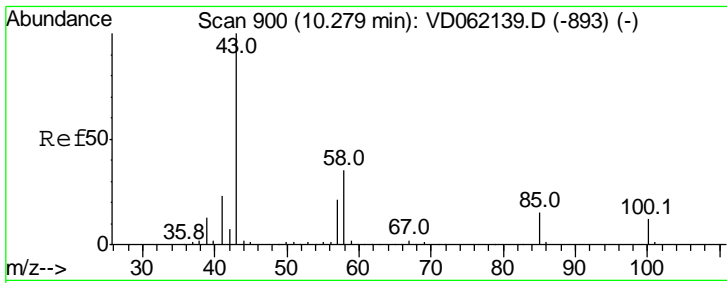
Tgt Ion	Resp	Lower	Upper
43	100		
61	0.0	25.1	37.7#
87	0.0	0.0	0.0



#50
 Toluene-d8
 Concen: 33.695 ug/l
 RT: 10.42 min Scan# 914
 Delta R.T. 0.02 min
 Lab File: VD062408.D
 Acq: 16 May 2019 00:31

Tgt Ion	Resp	Lower	Upper
98	100		
100	64.2	53.8	80.8

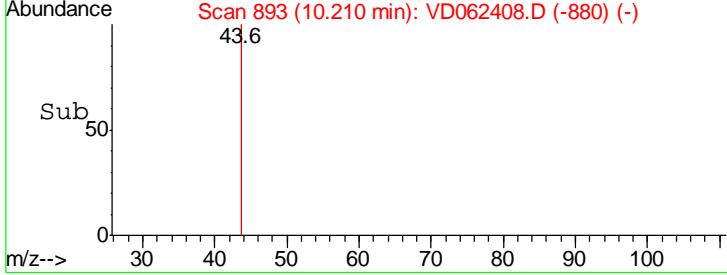
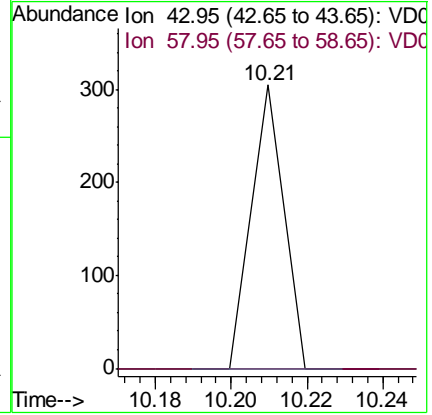
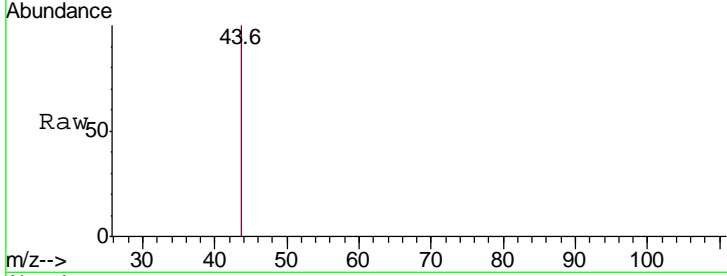




#51
 4-Methyl-2-Pentanone
 Concen: 2.409 ug/l
 RT: 10.21 min Scan# 893
 Delta R.T. -0.07 min
 Lab File: VD062408.D
 Acq: 16 May 2019 00:31

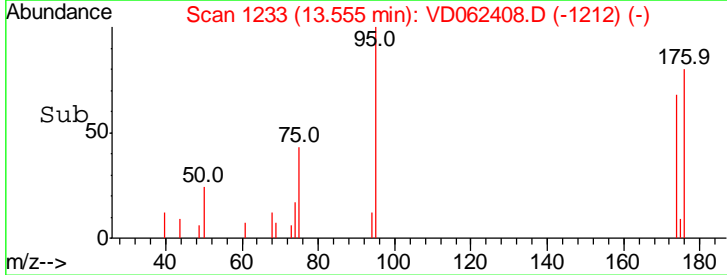
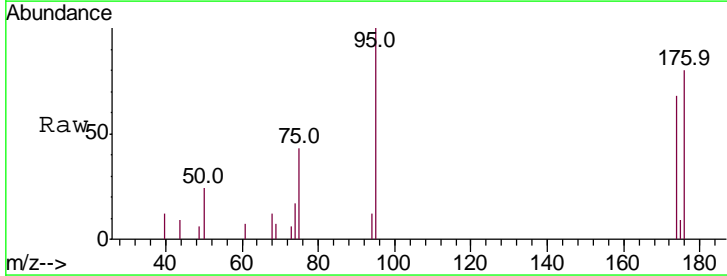
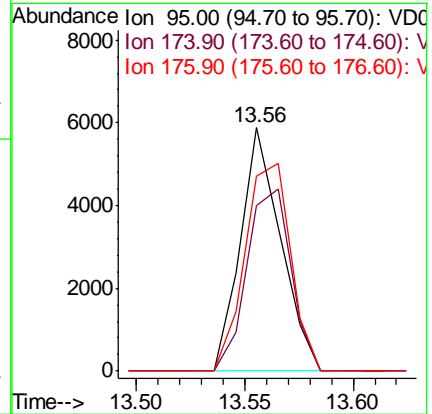
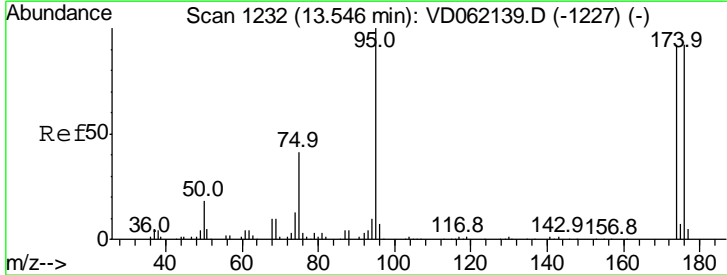
Instrument :
 MSVOA_D
 ClientSampled :
 RO-COMP-2

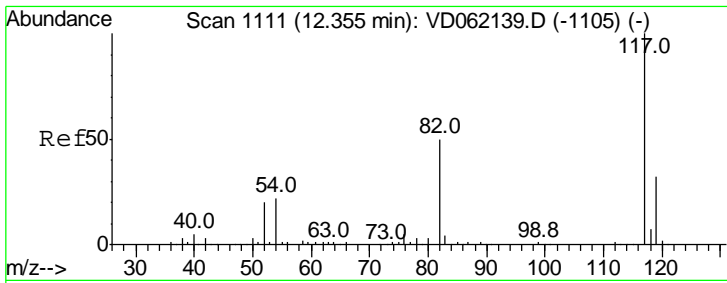
Tgt Ion: 43 Resp: 180
 Ion Ratio Lower Upper
 43 100
 58 0.0 30.4 45.6#



#62
 4-Bromofluorobenzene
 Concen: 39.959 ug/l
 RT: 13.56 min Scan# 1233
 Delta R.T. 0.01 min
 Lab File: VD062408.D
 Acq: 16 May 2019 00:31

Tgt Ion: 95 Resp: 7568
 Ion Ratio Lower Upper
 95 100
 174 68.1 0.0 181.8
 176 80.1 0.0 174.4



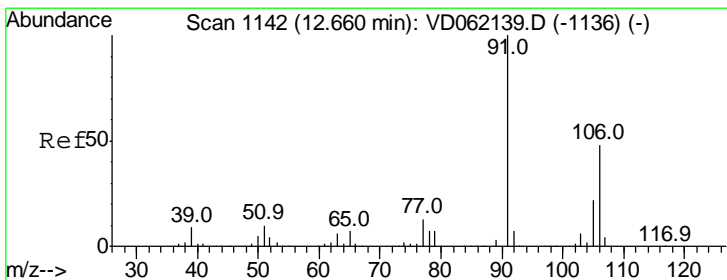
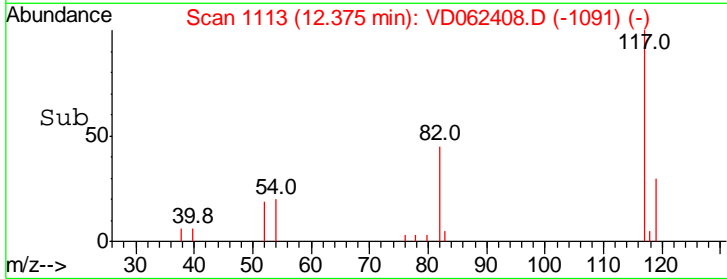
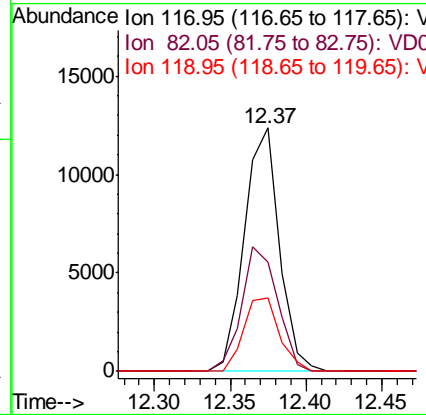
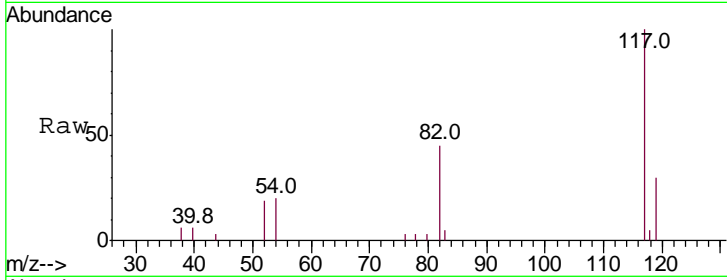


#63
 Chlorobenzene-d5
 Concen: 50.000 ug/l
 RT: 12.37 min Scan# 1113
 Delta R.T. 0.02 min
 Lab File: VD062408.D
 Acq: 16 May 2019 00:31

Instrument :
 MSVOA_D
 ClientSampled :
 RO-COMP-2

Tgt Ion: 117 Resp: 19865

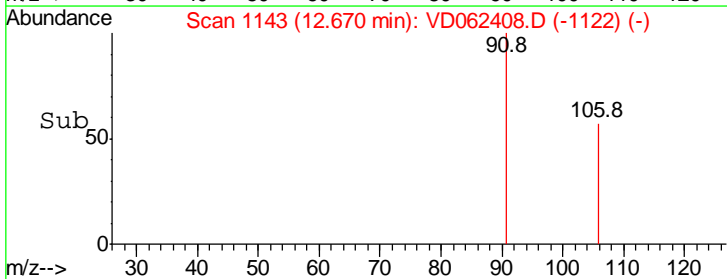
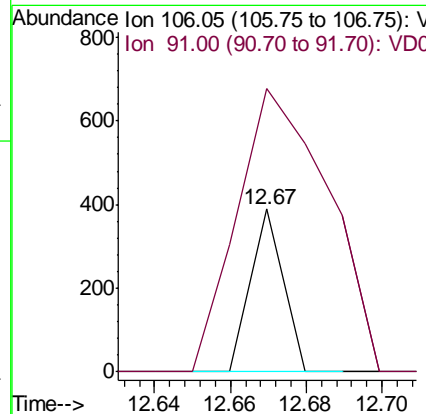
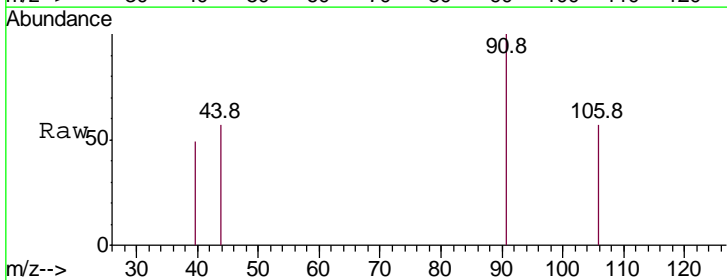
Ion	Ratio	Lower	Upper
117	100		
82	49.3	36.2	54.2
119	30.1	26.2	39.4

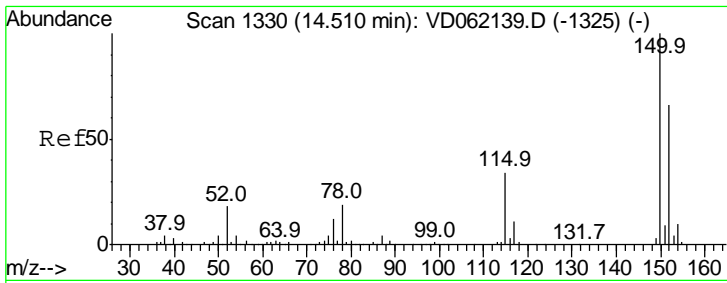


#68
 m/p-Xylenes
 Concen: 1.021 ug/l
 RT: 12.67 min Scan# 1143
 Delta R.T. 0.01 min
 Lab File: VD062408.D
 Acq: 16 May 2019 00:31

Tgt Ion: 106 Resp: 230

Ion	Ratio	Lower	Upper
106	100		
91	174.0	164.0	246.0



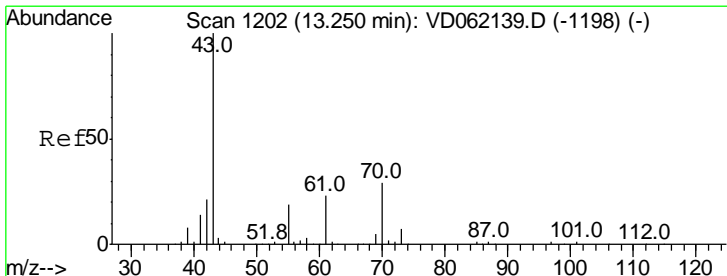
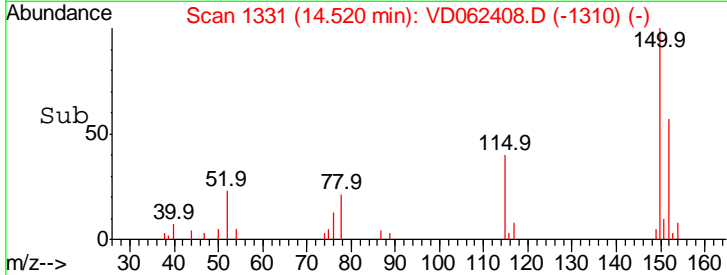
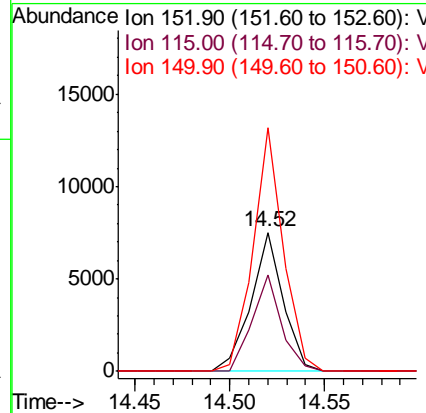
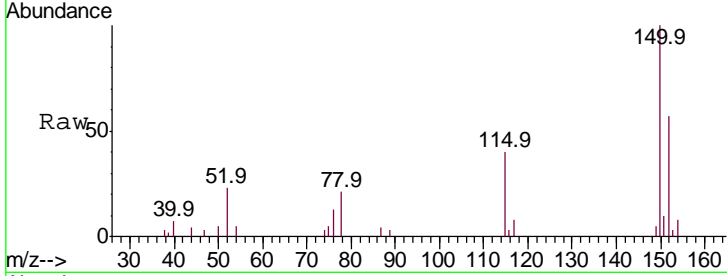


#72
 1,4-Dichlorobenzene-d4
 Concen: 50.000 ug/l
 RT: 14.52 min Scan# 1331
 Delta R.T. 0.01 min
 Lab File: VD062408.D
 Acq: 16 May 2019 00:31

Instrument :
 MSVOA_D
 ClientSampled :
 RO-COMP-2

Tot Ion: 152 Resp: 8894

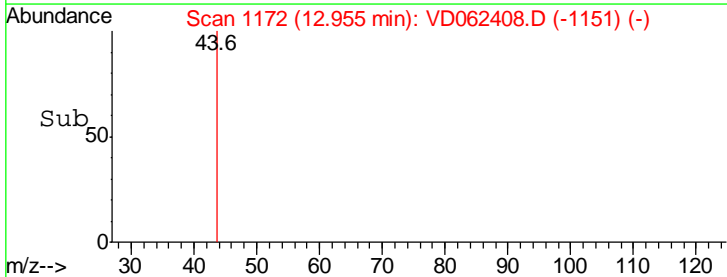
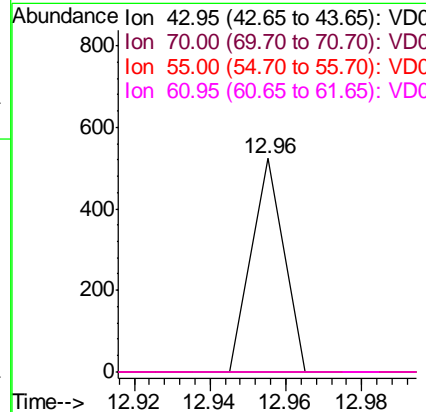
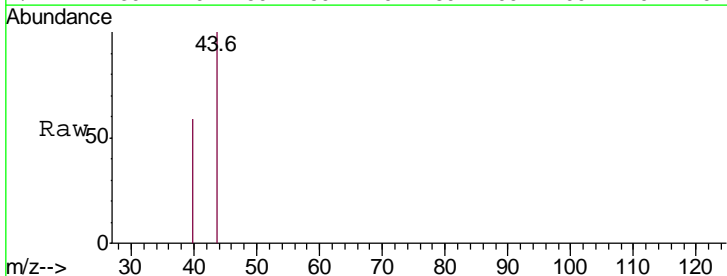
Ion	Ratio	Lower	Upper
152	100		
115	69.2	30.9	92.7
150	174.9	0.0	314.8

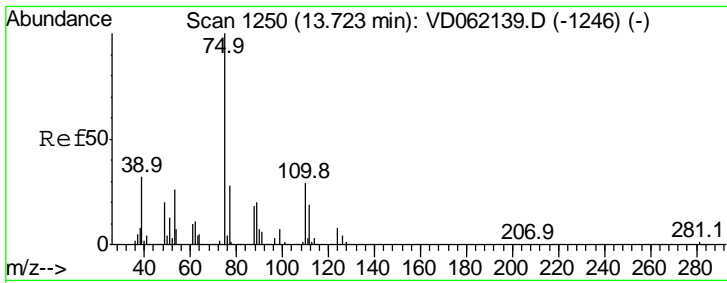


#74
 N-amyl acetate
 Concen: 2.211 ug/l
 RT: 12.96 min Scan# 1172
 Delta R.T. -0.30 min
 Lab File: VD062408.D
 Acq: 16 May 2019 00:31

Tgt Ion: 43 Resp: 309

Ion	Ratio	Lower	Upper
43	100		
70	0.0	24.2	36.4#
55	0.0	16.0	24.0#
61	0.0	21.6	32.4#

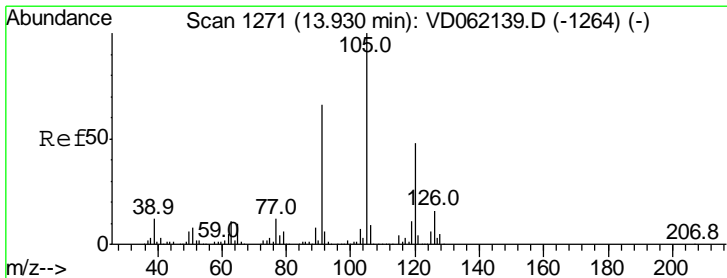
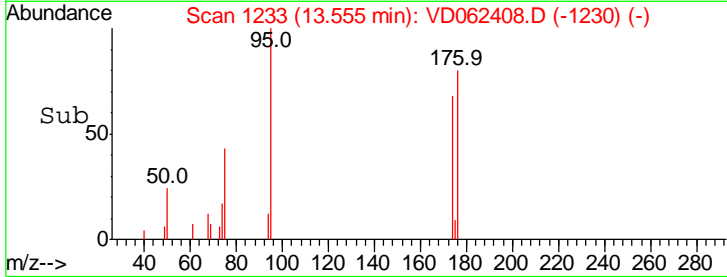
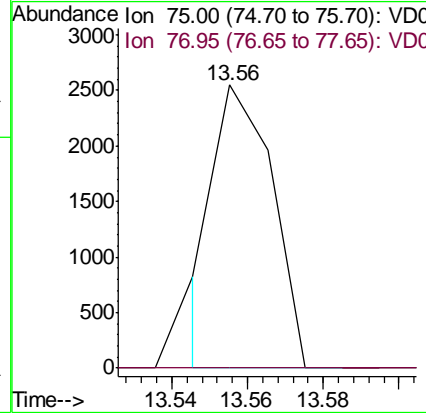
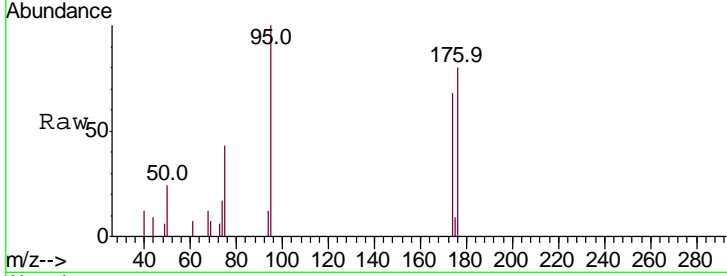




#76
 1,2,3-Trichloropropane
 Concen: 25.204 ug/l
 RT: 13.56 min Scan# 1233
 Delta R.T. -0.17 min
 Lab File: VD062408.D
 Acq: 16 May 2019 00:31

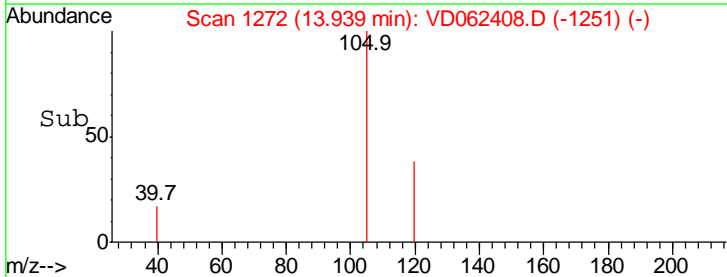
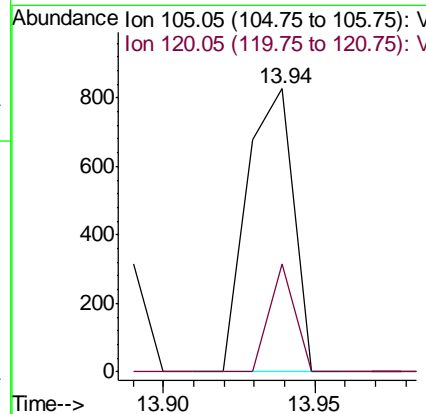
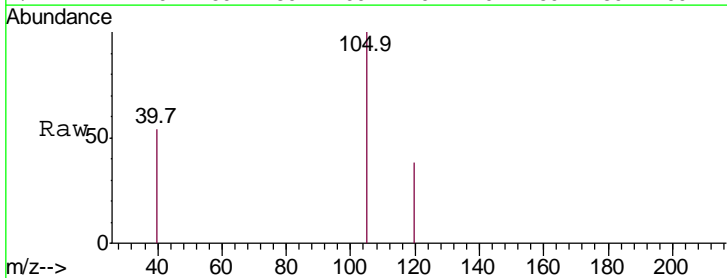
Instrument : MSVOA_D
 ClientSampled : RO-COMP-2

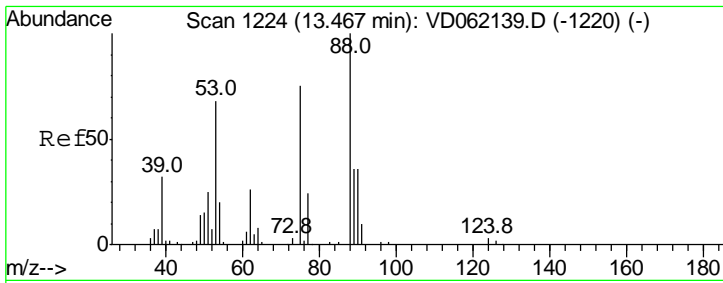
Tgt Ion: 75 Resp: 2664
 Ion Ratio Lower Upper
 75 100
 77 0.0 16.4 49.4#



#80
 1,3,5-Trimethylbenzene
 Concen: 1.980 ug/l
 RT: 13.94 min Scan# 1272
 Delta R.T. 0.01 min
 Lab File: VD062408.D
 Acq: 16 May 2019 00:31

Tgt Ion: 105 Resp: 889
 Ion Ratio Lower Upper
 105 100
 120 38.0 24.0 72.0

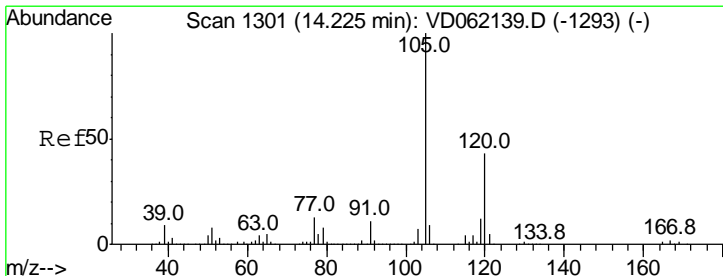
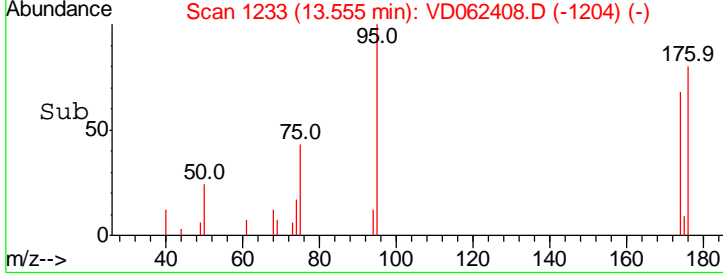
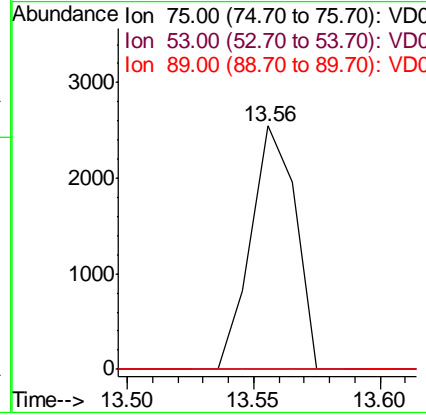
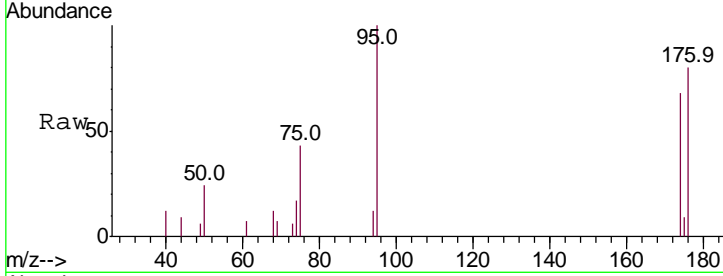




#81
 trans-1,4-Dichloro-2-butene
 Concen: 105.432 ug/l
 RT: 13.56 min Scan# 1233
 Delta R.T. 0.09 min
 Lab File: VD062408.D
 Acq: 16 May 2019 00:31

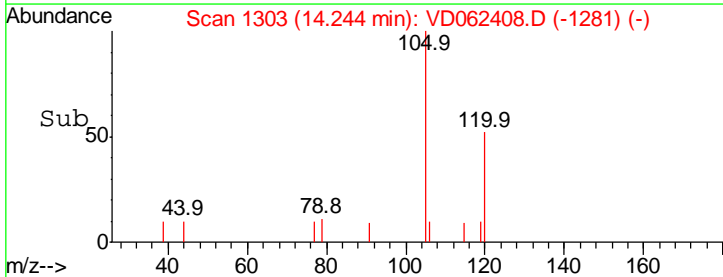
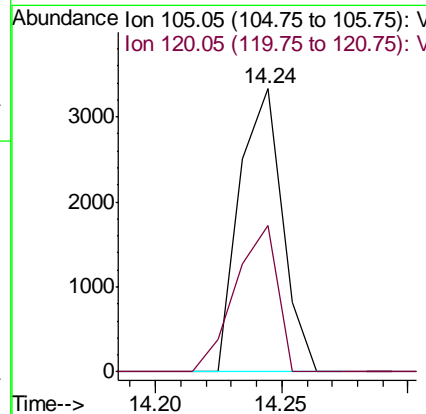
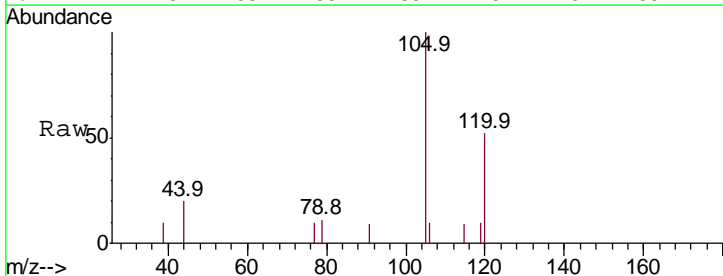
Instrument :
 MSVOA_D
 ClientSampled :
 RO-COMP-2

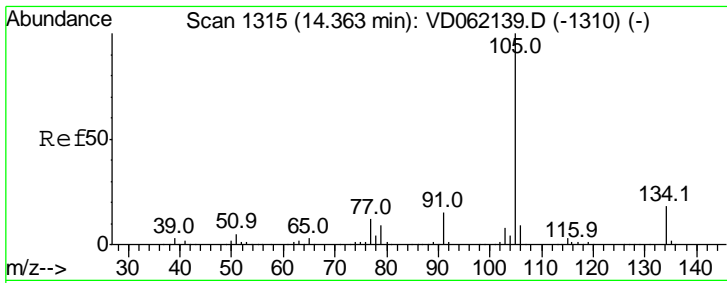
Tgt Ion	Resp	Lower	Upper
75	100		
53	0.0	65.8	98.8#
89	0.0	35.0	52.6#



#84
 1,2,4-Trimethylbenzene
 Concen: 8.719 ug/l
 RT: 14.24 min Scan# 1303
 Delta R.T. 0.02 min
 Lab File: VD062408.D
 Acq: 16 May 2019 00:31

Tgt Ion	Resp	Lower	Upper
105	100		
120	51.6	23.1	69.2



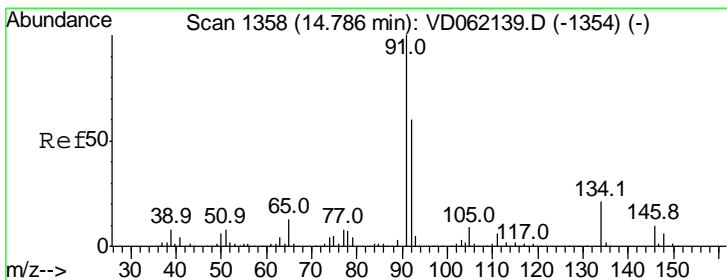
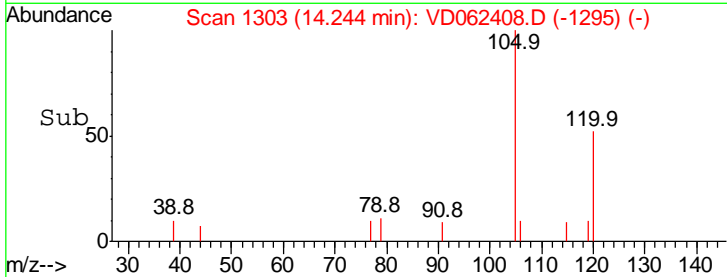
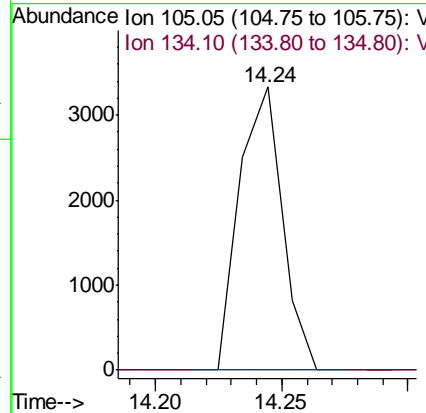
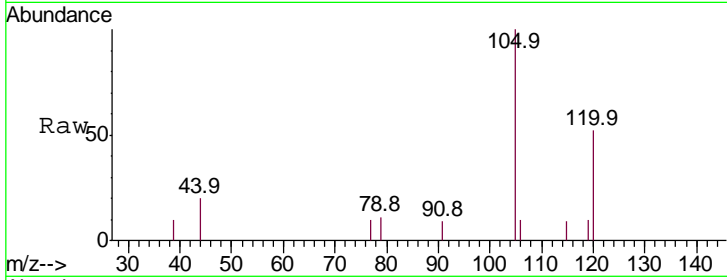


#85
 sec-Butylbenzene
 Concen: 7.100 ug/l
 RT: 14.24 min Scan# 1303
 Delta R.T. -0.12 min
 Lab File: VD062408.D
 Acq: 16 May 2019 00:31

Instrument :
 MSVOA_D
 ClientSampled :
 RO-COMP-2

Tgt Ion: 105 Resp: 3928

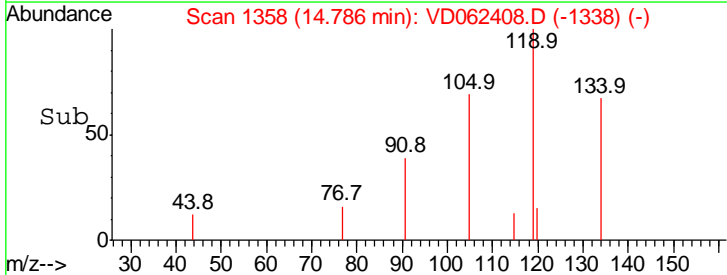
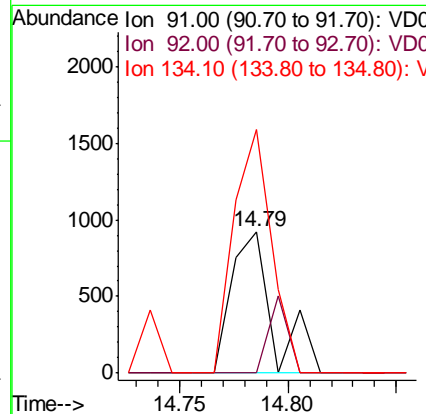
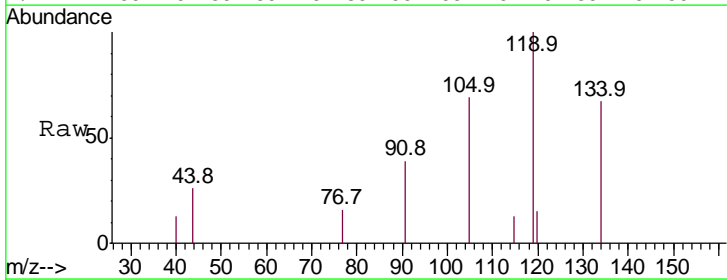
Ion	Ratio	Lower	Upper
105	100		
134	0.0	8.9	26.7#

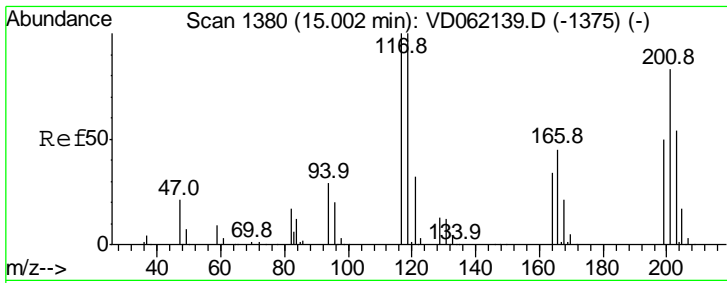


#89
 n-Butylbenzene
 Concen: 2.779 ug/l
 RT: 14.79 min Scan# 1358
 Delta R.T. -0.00 min
 Lab File: VD062408.D
 Acq: 16 May 2019 00:31

Tgt Ion: 91 Resp: 1233

Ion	Ratio	Lower	Upper
91	100		
92	0.0	30.3	91.0#
134	171.8	14.5	43.6#

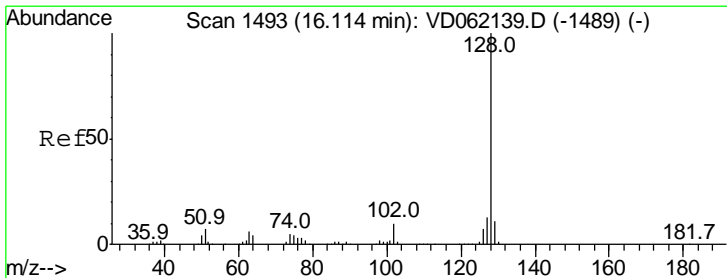
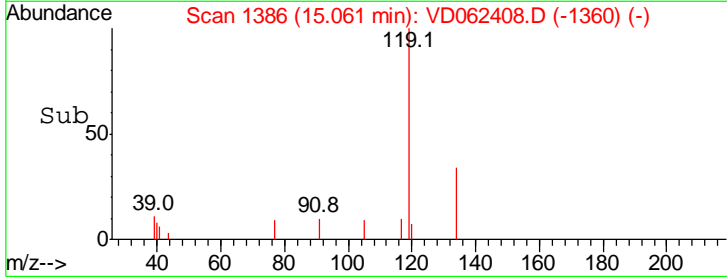
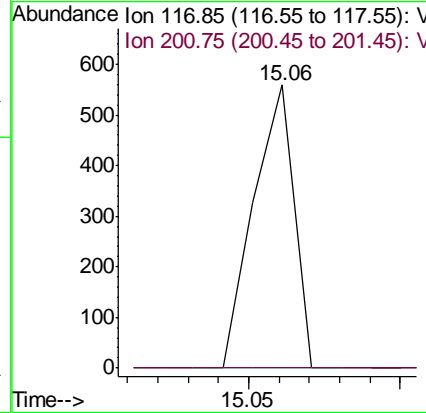
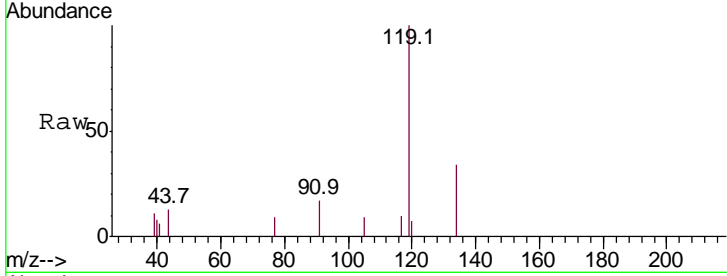




#90
 Hexachloroethane
 Concen: 3.891 ug/l
 RT: 15.06 min Scan# 1386
 Delta R.T. 0.06 min
 Lab File: VD062408.D
 Acq: 16 May 2019 00:31

Instrument :
 MSVOA_D
 ClientSampled :
 RO-COMP-2

Tgt Ion:117 Resp: 523
 Ion Ratio Lower Upper
 117 100
 201 0.0 30.2 90.6#



#95
 Naphthalene
 Concen: 42.566 ug/l
 RT: 16.12 min Scan# 1494
 Delta R.T. 0.01 min
 Lab File: VD062408.D
 Acq: 16 May 2019 00:31

Tgt Ion:128 Resp: 9712
 Ion Ratio Lower Upper
 128 100
 127 14.5 9.8 14.8
 129 9.4 8.8 13.2

