

Data Path : Z:\voasrv\HPCHEM1\MSVOA_D\Data\VD052622\
 Data File : VD073381.D
 Acq On : 26 May 2022 11:50
 Operator : VA/SY
 Sample : VD0526SBL01
 Misc : 5.00G/5.00ml/MSVOA_D/SOIL
 ALS Vial : 3 Sample Multiplier: 1

Instrument :
 MSVOA_D
 ClientSampleId :
 VD0526SBL01

Quant Time: May 26 16:56:56 2022
 Quant Method : Z:\voasrv\HPCHEM1\MSVOA_D\Method\82D051922S.M
 Quant Title : SW846 8260
 QLast Update : Thu May 19 15:13:42 2022
 Response via : Initial Calibration

Compound	R.T.	QIon	Response	Conc	Units	Dev(Min)

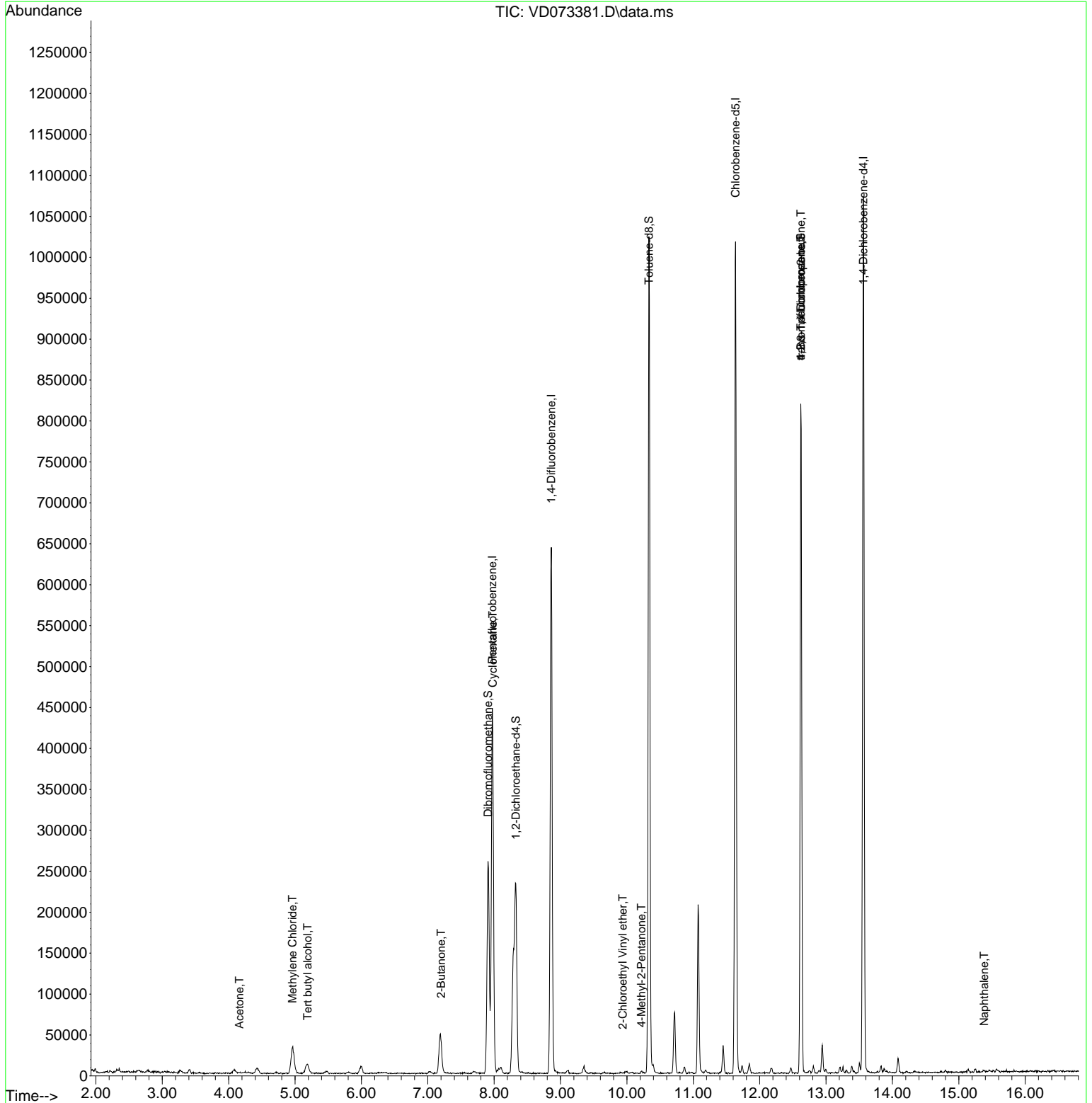
Internal Standards						
1) Pentafluorobenzene	7.973	168	318400	50.000	ug/l	0.00
34) 1,4-Difluorobenzene	8.861	114	559042	50.000	ug/l	0.00
63) Chlorobenzene-d5	11.638	117	599030	50.000	ug/l	0.00
72) 1,4-Dichlorobenzene-d4	13.561	152	277603	50.000	ug/l	0.00
System Monitoring Compounds						
33) 1,2-Dichloroethane-d4	8.326	65	177729	50.509	ug/l	0.00
Spiked Amount	50.000	Range	50 - 163	Recovery	=	101.020%
35) Dibromofluoromethane	7.908	113	191053	51.791	ug/l	0.00
Spiked Amount	50.000	Range	54 - 147	Recovery	=	103.580%
50) Toluene-d8	10.332	98	689044	50.671	ug/l	0.00
Spiked Amount	50.000	Range	49 - 140	Recovery	=	101.340%
62) 4-Bromofluorobenzene	12.620	95	263211	55.155	ug/l	0.00
Spiked Amount	50.000	Range	25 - 144	Recovery	=	110.300%
Target Compounds						
					Qvalue	
5) Bromomethane	2.797	94	2068	Below Cal	#	78
11) Tert butyl alcohol	5.191	59	11069	20.275	ug/l #	74
13) Acrolein	3.920	56	66	Below Cal	#	14
16) Acetone	4.162	43	2163	3.549	ug/l	96
20) Methylene Chloride	4.962	84	25728	2.893	ug/l #	88
25) 2-Butanone	7.203	43	1315	1.475	ug/l #	52
31) Cyclohexane	7.979	56	9494	1.544	ug/l #	1
51) 4-Methyl-2-Pentanone	10.220	43	2113	1.004	ug/l #	86
58) 2-Chloroethyl Vinyl ether	9.938	63	185	21.728	ug/l #	48
76) 1,2,3-Trichloropropane	12.620	75	130983	48.089	ug/l #	100
81) trans-1,4-Dichloro-2-b...	12.620	75	130983	115.447	ug/l #	7
95) Naphthalene	15.384	128	2290	3.776	ug/l #	85

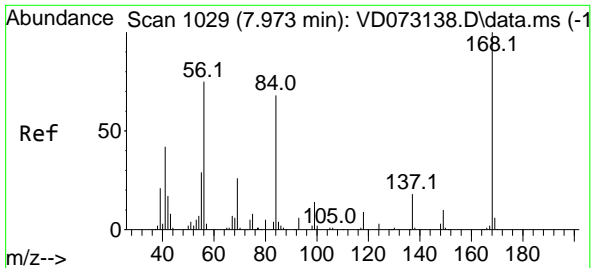
(#) = qualifier out of range (m) = manual integration (+) = signals summed

Data Path : Z:\voasrv\HPCHEM1\MSVOA_D\Data\VD052622\
 Data File : VD073381.D
 Acq On : 26 May 2022 11:50
 Operator : VA/SY
 Sample : VD0526SBL01
 Misc : 5.00G/5.00ml/MSVOA_D/SOIL
 ALS Vial : 3 Sample Multiplier: 1

Instrument :
 MSVOA_D
 ClientSampleId :
 VD0526SBL01

Quant Time: May 26 16:56:56 2022
 Quant Method : Z:\voasrv\HPCHEM1\MSVOA_D\Method\82D051922S.M
 Quant Title : SW846 8260
 QLast Update : Thu May 19 15:13:42 2022
 Response via : Initial Calibration

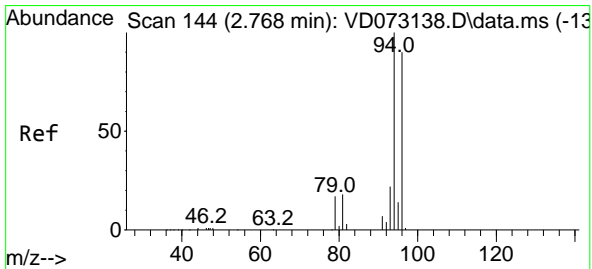
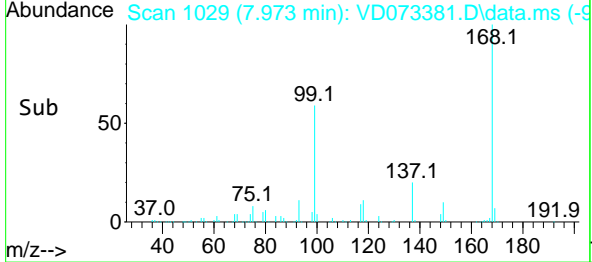
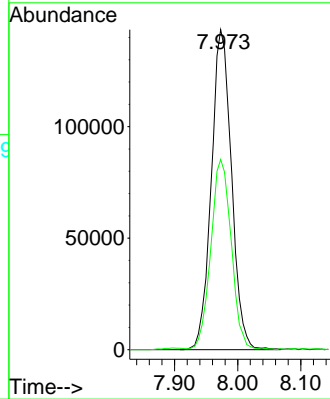
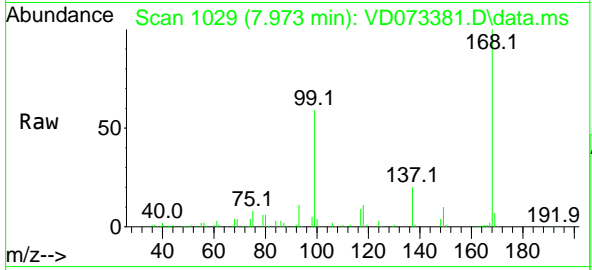




#1
 Pentafluorobenzene
 Concen: 50.000 ug/l
 RT: 7.973 min Scan# 10
 Delta R.T. 0.000 min
 Lab File: VD073381.D
 Acq: 26 May 2022 11:50

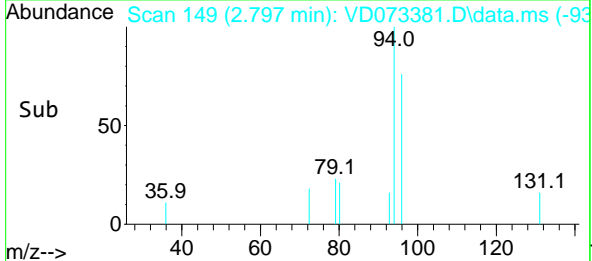
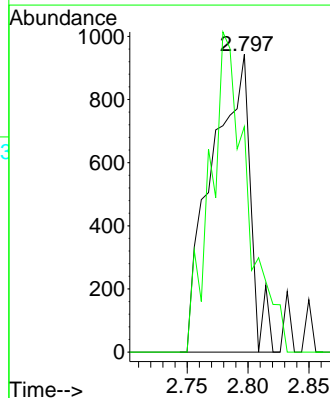
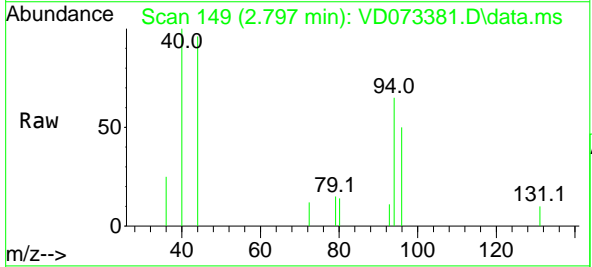
Instrument :
 MSVOA_D
 ClientSampleId :
 VD0526SBL01

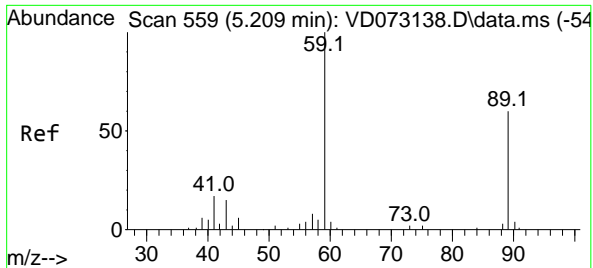
Tgt Ion:168 Resp: 318400
 Ion Ratio Lower Upper
 168 100
 99 59.2 49.8 74.6



#5
 Bromomethane
 Concen: Below Cal
 RT: 2.797 min Scan# 149
 Delta R.T. 0.029 min
 Lab File: VD073381.D
 Acq: 26 May 2022 11:50

Tgt Ion: 94 Resp: 2068
 Ion Ratio Lower Upper
 94 100
 96 75.7 77.6 116.4#

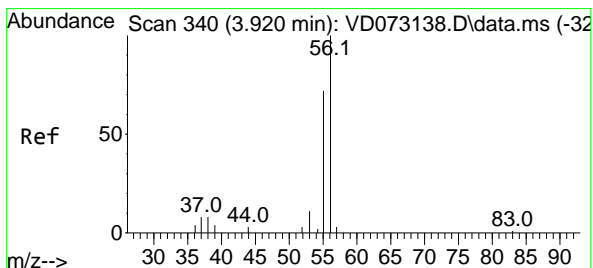
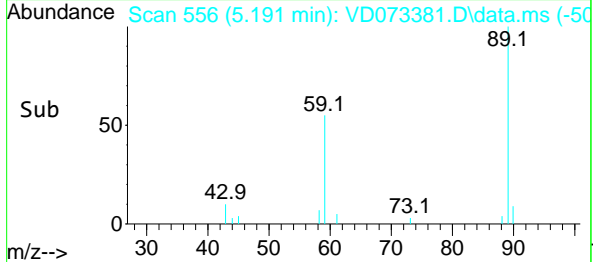
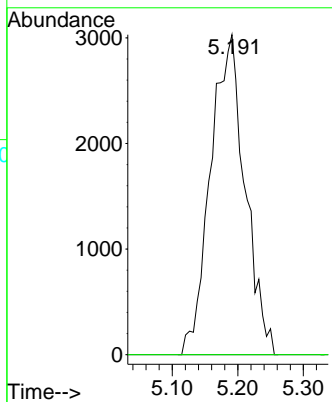
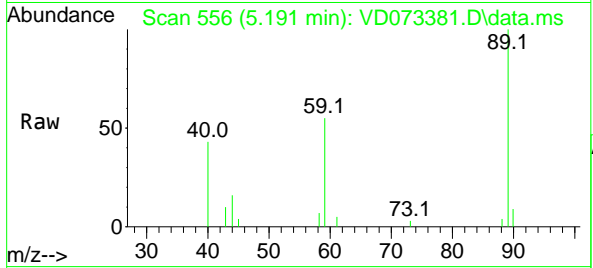




#11
 Tert butyl alcohol
 Concen: 20.275 ug/l
 RT: 5.191 min Scan# 51
 Delta R.T. -0.018 min
 Lab File: VD073381.D
 Acq: 26 May 2022 11:50

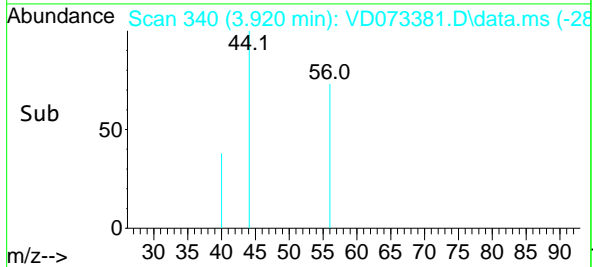
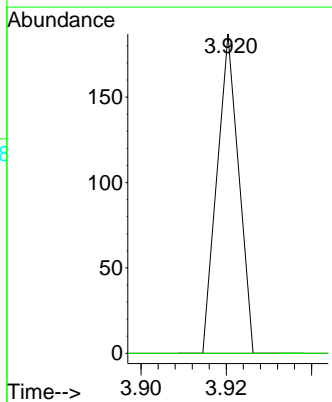
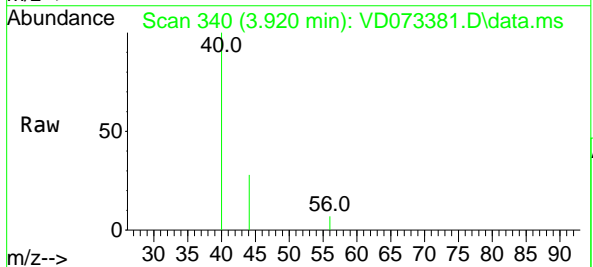
Instrument : MSVOA_D
 ClientSampleId : VD0526SBL01

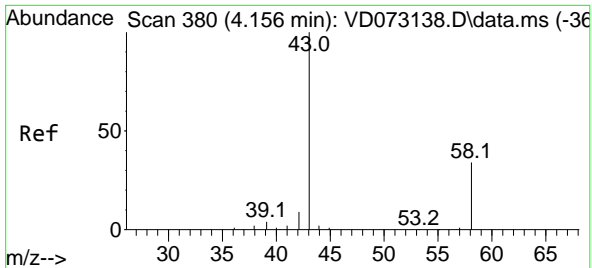
Tgt Ion: 59 Resp: 11069
 Ion Ratio Lower Upper
 59 100
 57 0.0 7.8 11.6#



#13
 Acrolein
 Concen: Below Cal
 RT: 3.920 min Scan# 340
 Delta R.T. 0.000 min
 Lab File: VD073381.D
 Acq: 26 May 2022 11:50

Tgt Ion: 56 Resp: 66
 Ion Ratio Lower Upper
 56 100
 55 0.0 57.1 85.7#

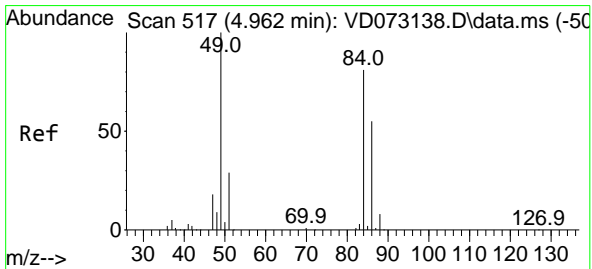
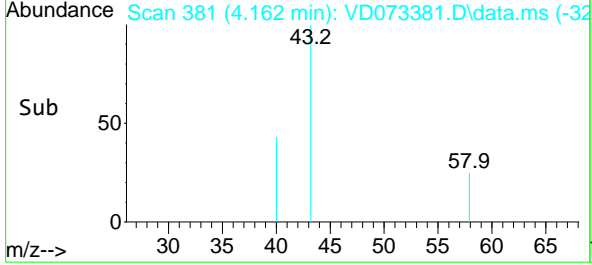
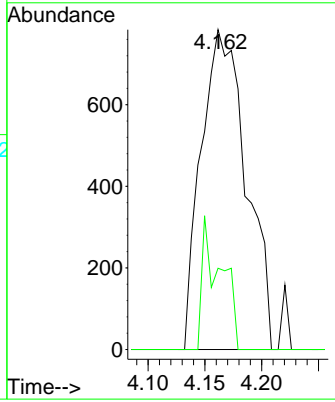
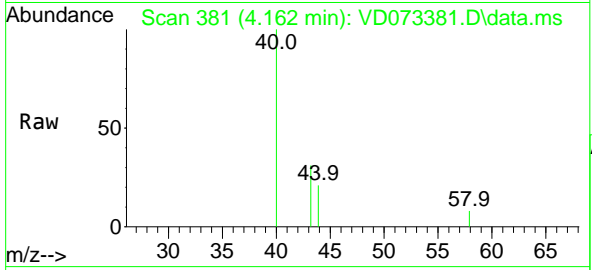




#16
 Acetone
 Concen: 3.549 ug/l
 RT: 4.162 min Scan# 381
 Delta R.T. 0.006 min
 Lab File: VD073381.D
 Acq: 26 May 2022 11:50

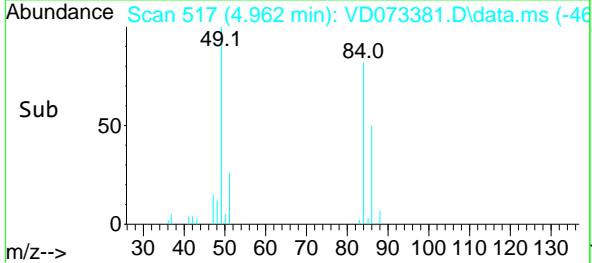
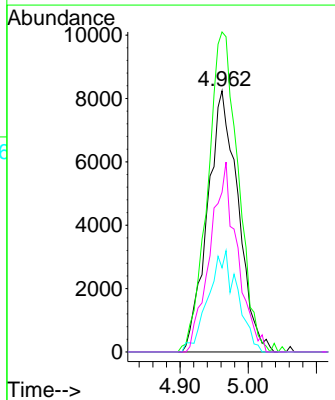
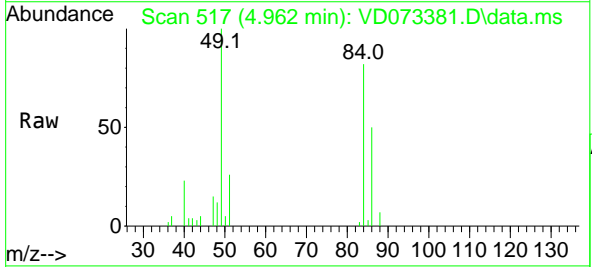
Instrument : MSVOA_D
 ClientSampleId : VD0526SBL01

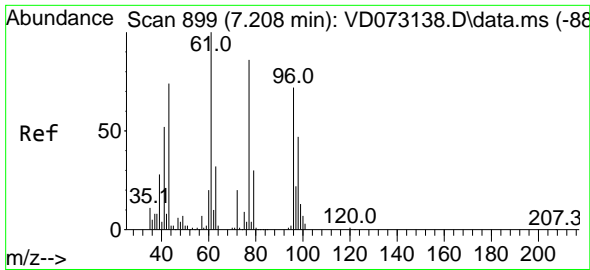
Tgt Ion: 43 Resp: 2163
 Ion Ratio Lower Upper
 43 100
 58 25.4 22.1 33.1



#20
 Methylene Chloride
 Concen: 2.893 ug/l
 RT: 4.962 min Scan# 517
 Delta R.T. -0.000 min
 Lab File: VD073381.D
 Acq: 26 May 2022 11:50

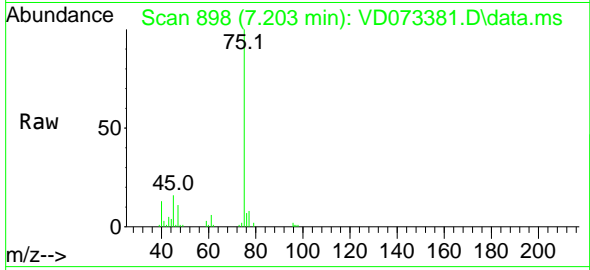
Tgt Ion: 84 Resp: 25728
 Ion Ratio Lower Upper
 84 100
 49 122.6 112.8 169.2
 51 32.2 32.6 48.8#
 86 61.2 47.9 71.9



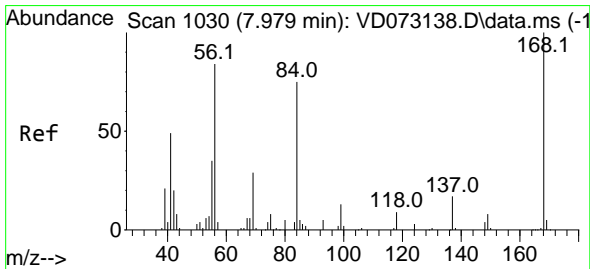
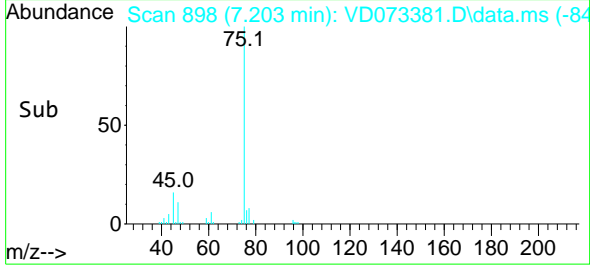
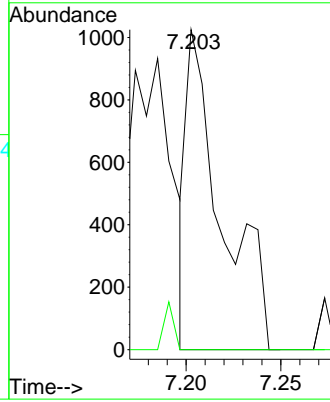


#25
 2-Butanone
 Concen: 1.475 ug/l
 RT: 7.203 min Scan# 899
 Delta R.T. -0.005 min
 Lab File: VD073381.D
 Acq: 26 May 2022 11:50

Instrument : MSVOA_D
 ClientSampleId : VD0526SBL01

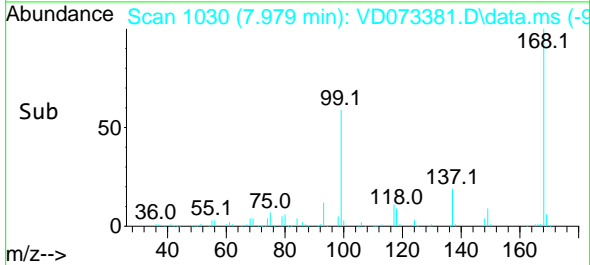
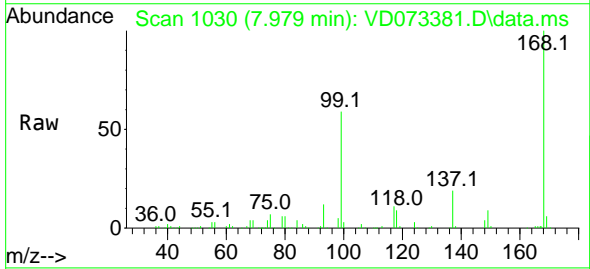
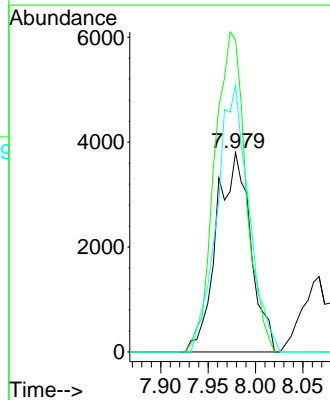


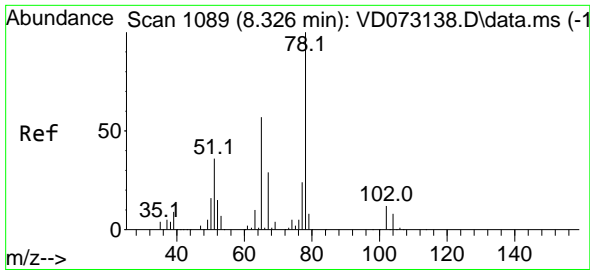
Tgt Ion: 43 Resp: 1315
 Ion Ratio Lower Upper
 43 100
 72 0.0 18.6 27.8#



#31
 Cyclohexane
 Concen: 1.544 ug/l
 RT: 7.979 min Scan# 1030
 Delta R.T. 0.000 min
 Lab File: VD073381.D
 Acq: 26 May 2022 11:50

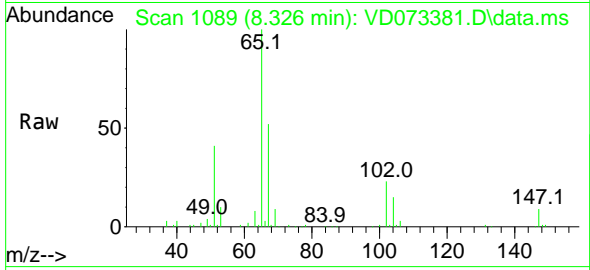
Tgt Ion: 56 Resp: 9494
 Ion Ratio Lower Upper
 56 100
 69 156.5 25.4 38.2#
 84 133.8 63.0 94.4#



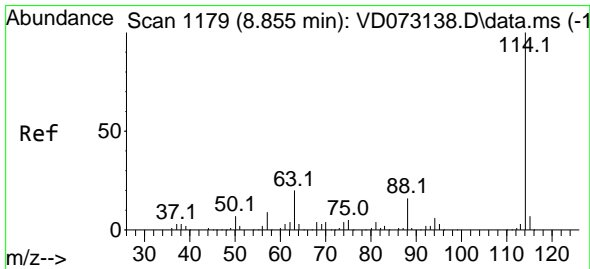
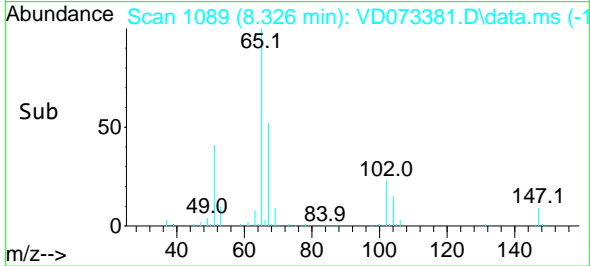
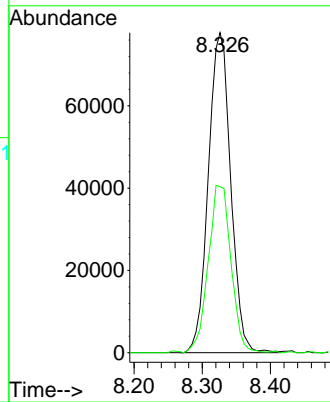


#33
 1,2-Dichloroethane-d4
 Concen: 50.509 ug/l
 RT: 8.326 min Scan# 1180
 Delta R.T. 0.000 min
 Lab File: VD073381.D
 Acq: 26 May 2022 11:50

Instrument : MSVOA_D
 ClientSampleId : VD0526SBL01

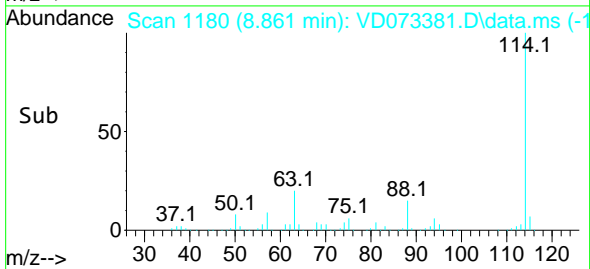
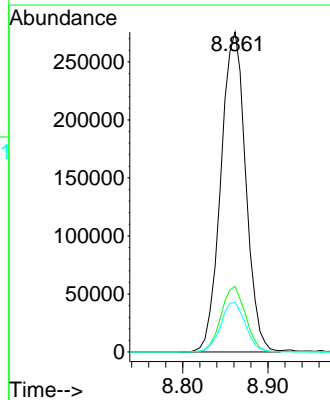
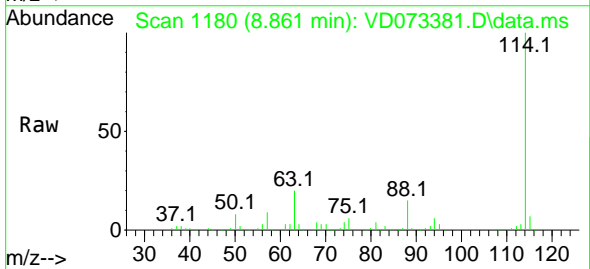


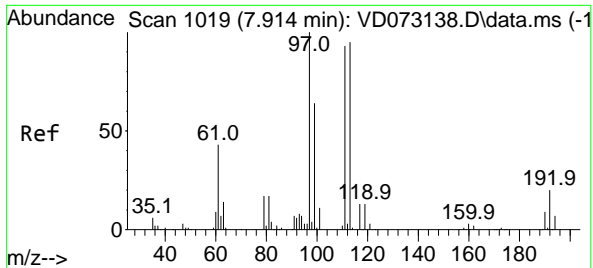
Tgt Ion: 65 Resp: 177729
 Ion Ratio Lower Upper
 65 100
 67 53.2 0.0 101.4



#34
 1,4-Difluorobenzene
 Concen: 50.000 ug/l
 RT: 8.861 min Scan# 1180
 Delta R.T. 0.006 min
 Lab File: VD073381.D
 Acq: 26 May 2022 11:50

Tgt Ion: 114 Resp: 559042
 Ion Ratio Lower Upper
 114 100
 63 20.4 0.0 46.6
 88 15.5 0.0 33.2



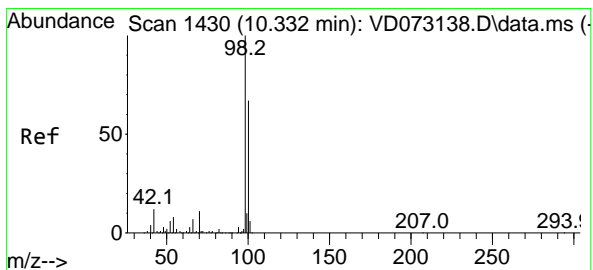
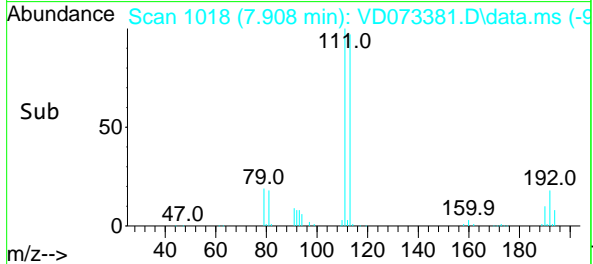
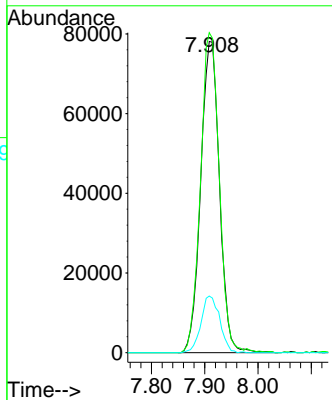
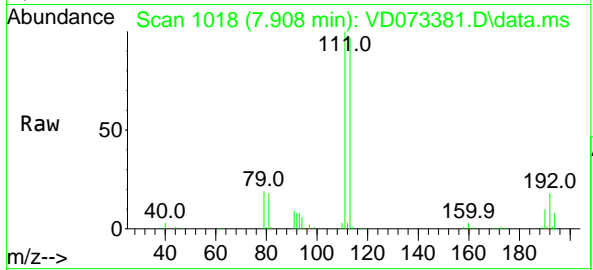


#35
 Dibromofluoromethane
 Concen: 51.791 ug/l
 RT: 7.908 min Scan# 1018
 Delta R.T. -0.006 min
 Lab File: VD073381.D
 Acq: 26 May 2022 11:50

Instrument : MSVOA_D
 ClientSampleId : VD0526SBL01

Tgt Ion:113 Resp: 191053

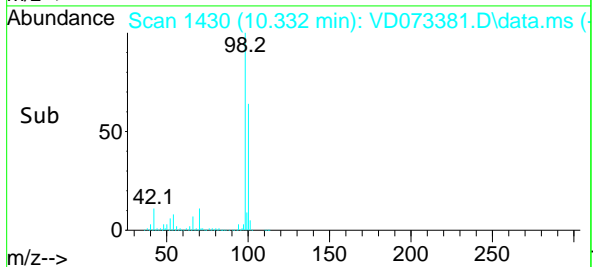
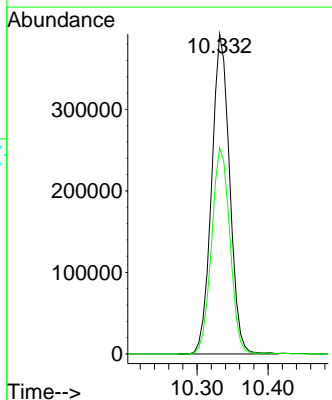
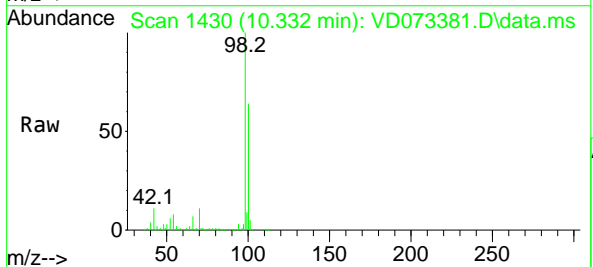
Ion	Ratio	Lower	Upper
113	100		
111	103.0	83.8	125.6
192	18.2	14.6	21.8

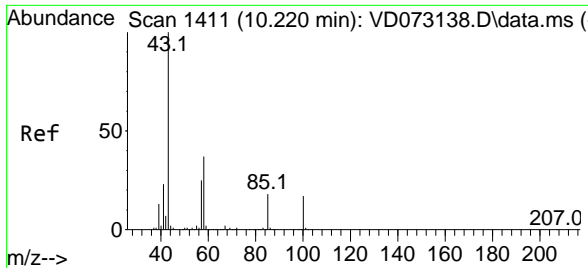


#50
 Toluene-d8
 Concen: 50.671 ug/l
 RT: 10.332 min Scan# 1430
 Delta R.T. -0.000 min
 Lab File: VD073381.D
 Acq: 26 May 2022 11:50

Tgt Ion: 98 Resp: 689044

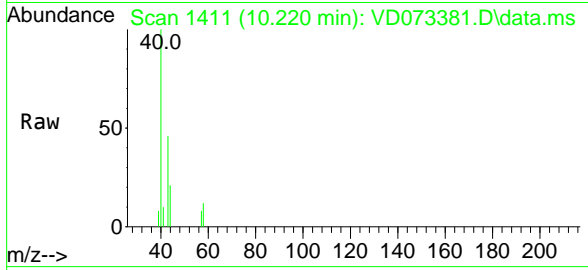
Ion	Ratio	Lower	Upper
98	100		
100	65.6	52.4	78.6



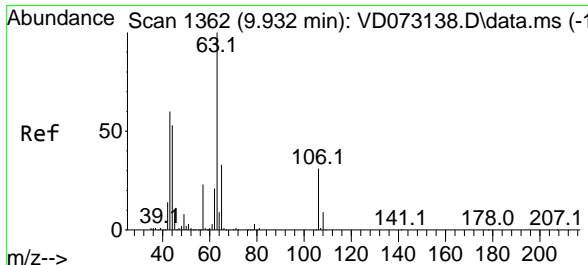
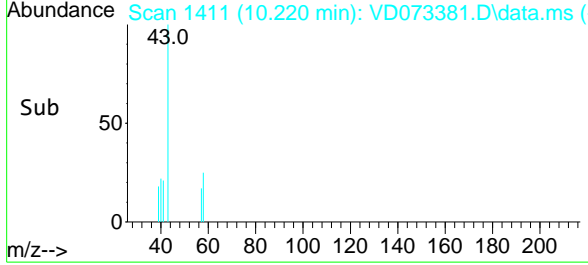
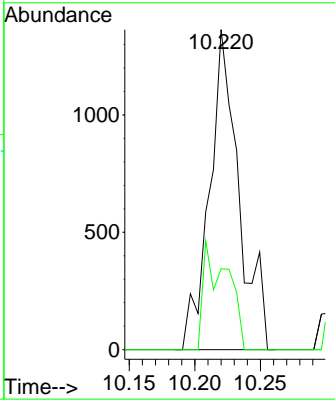


#51
 4-Methyl-2-Pentanone
 Concen: 1.004 ug/l
 RT: 10.220 min Scan# 1411
 Delta R.T. 0.000 min
 Lab File: VD073381.D
 Acq: 26 May 2022 11:50

Instrument : MSVOA_D
 ClientSampleId : VD0526SBL01

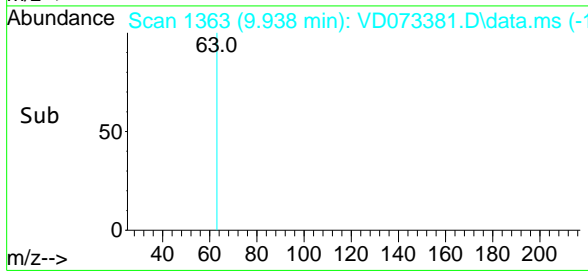
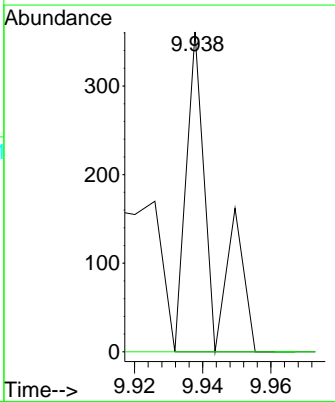
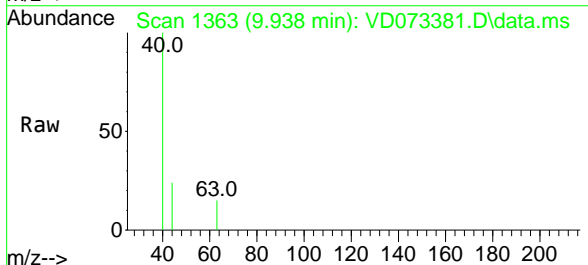


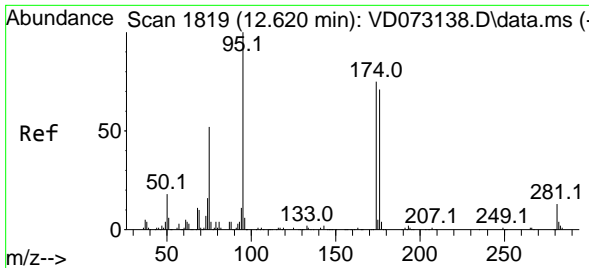
Tgt Ion: 43 Resp: 2113
 Ion Ratio Lower Upper
 43 100
 58 27.5 28.6 43.0#



#58
 2-Chloroethyl Vinyl ether
 Concen: 21.728 ug/l
 RT: 9.938 min Scan# 1363
 Delta R.T. 0.006 min
 Lab File: VD073381.D
 Acq: 26 May 2022 11:50

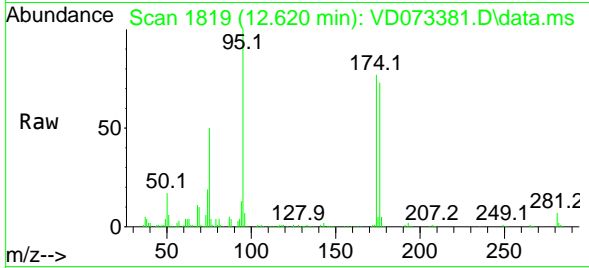
Tgt Ion: 63 Resp: 185
 Ion Ratio Lower Upper
 63 100
 106 0.0 21.4 32.0#





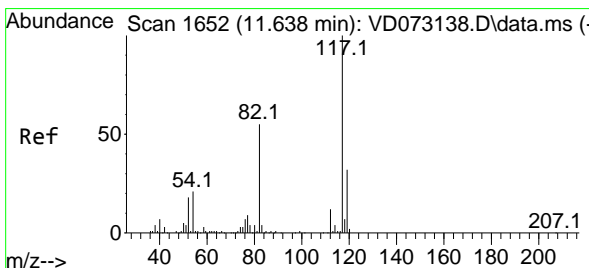
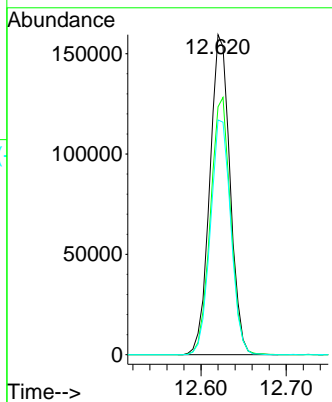
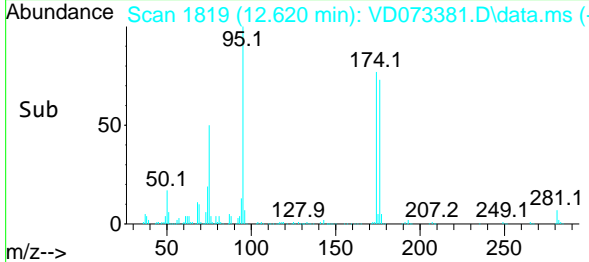
#62
 4-Bromofluorobenzene
 Concen: 55.155 ug/l
 RT: 12.620 min Scan# 1819
 Delta R.T. -0.000 min
 Lab File: VD073381.D
 Acq: 26 May 2022 11:50

Instrument : MSVOA_D
 ClientSampleId : VD0526SBL01

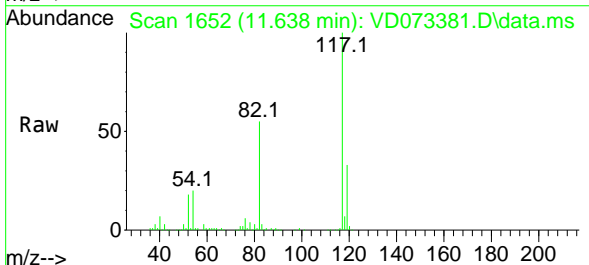


Tgt Ion: 95 Resp: 263211

Ion	Ratio	Lower	Upper
95	100		
174	80.0	0.0	152.8
176	73.8	0.0	145.4

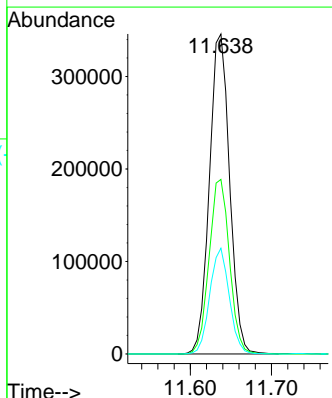
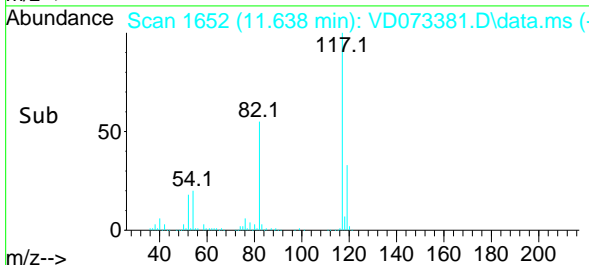


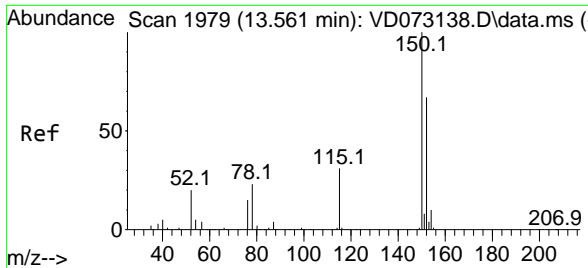
#63
 Chlorobenzene-d5
 Concen: 50.000 ug/l
 RT: 11.638 min Scan# 1652
 Delta R.T. -0.000 min
 Lab File: VD073381.D
 Acq: 26 May 2022 11:50



Tgt Ion: 117 Resp: 599030

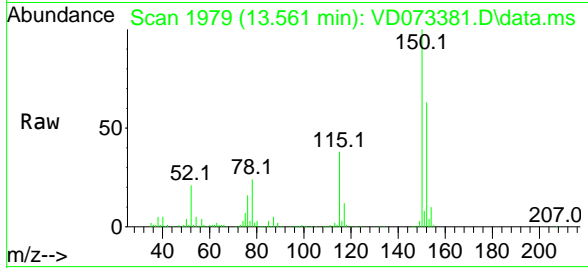
Ion	Ratio	Lower	Upper
117	100		
82	54.5	45.3	67.9
119	33.0	26.6	40.0



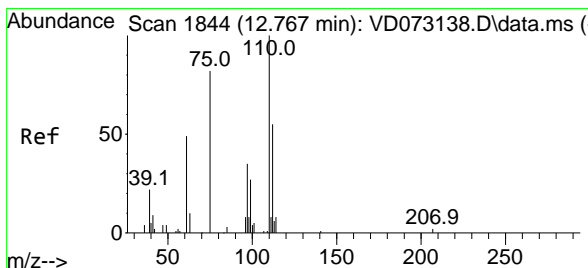
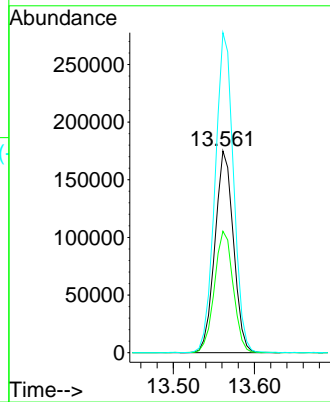
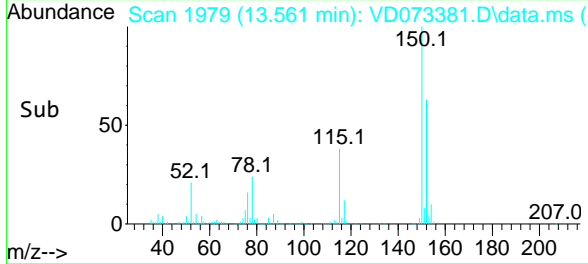


#72
 1,4-Dichlorobenzene-d4
 Concen: 50.000 ug/l
 RT: 13.561 min Scan# 1979
 Delta R.T. 0.000 min
 Lab File: VD073381.D
 Acq: 26 May 2022 11:50

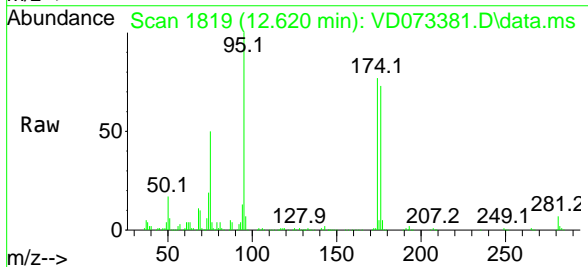
Instrument : MSVOA_D
 ClientSampleId : VD0526SBL01



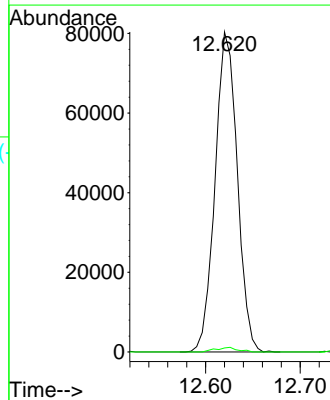
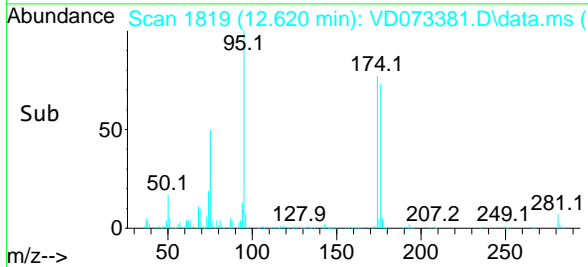
Tgt Ion:152 Resp: 277603
 Ion Ratio Lower Upper
 152 100
 115 61.2 31.3 93.8
 150 158.2 0.0 348.6

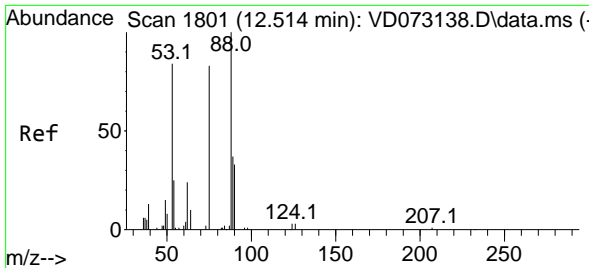


#76
 1,2,3-Trichloropropane
 Concen: 48.089 ug/l
 RT: 12.620 min Scan# 1819
 Delta R.T. -0.147 min
 Lab File: VD073381.D
 Acq: 26 May 2022 11:50



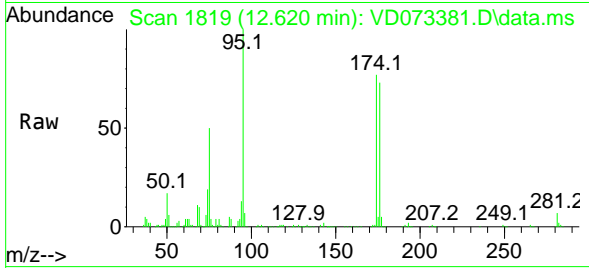
Tgt Ion: 75 Resp: 130983
 Ion Ratio Lower Upper
 75 100
 77 1.4 0.0 0.0#



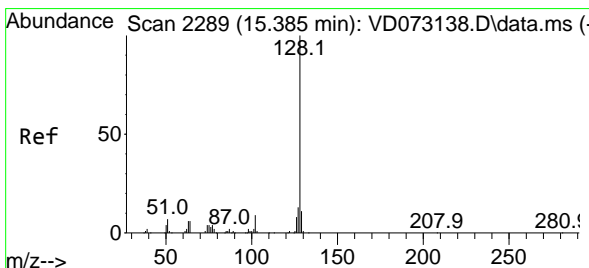
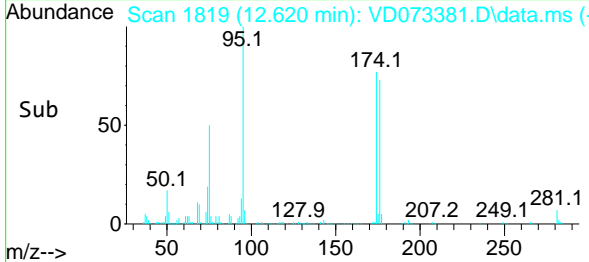
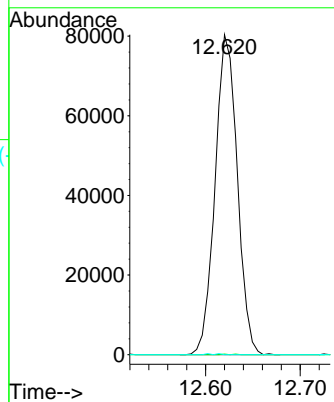


#81
 trans-1,4-Dichloro-2-butene
 Concen: 115.447 ug/l
 RT: 12.620 min Scan# 1819
 Delta R.T. 0.106 min
 Lab File: VD073381.D
 Acq: 26 May 2022 11:50

Instrument : MSVOA_D
 ClientSampleId : VD0526SBL01



Tgt Ion: 75 Resp: 130983
 Ion Ratio Lower Upper
 75 100
 53 0.1 86.5 129.7#
 89 0.0 33.9 50.9#



#95
 Naphthalene
 Concen: 3.776 ug/l
 RT: 15.384 min Scan# 2289
 Delta R.T. -0.001 min
 Lab File: VD073381.D
 Acq: 26 May 2022 11:50

Tgt Ion: 128 Resp: 2290
 Ion Ratio Lower Upper
 128 100
 127 3.7 10.3 15.5#
 129 9.0 8.4 12.6

