

Data Path : Z:\voasrv\HPCHEM1\MSVOA\_D\Data\VD052623\  
 Data File : VD076257.D  
 Acq On : 26 May 2023 14:12  
 Operator : KP/SY  
 Sample : 02913-01RE  
 Misc : 6.01G/5.00ml/MSVOA\_D/SOIL  
 ALS Vial : 10 Sample Multiplier: 1

Instrument :  
 MSVOA\_D  
 ClientSampleId :  
 TP-70A

Quant Time: May 26 23:16:15 2023  
 Quant Method : Z:\voasrv\HPCHEM1\MSVOA\_D\Method\82D051523S.M  
 Quant Title : SW846 8260  
 QLast Update : Tue May 16 10:08:53 2023  
 Response via : Initial Calibration

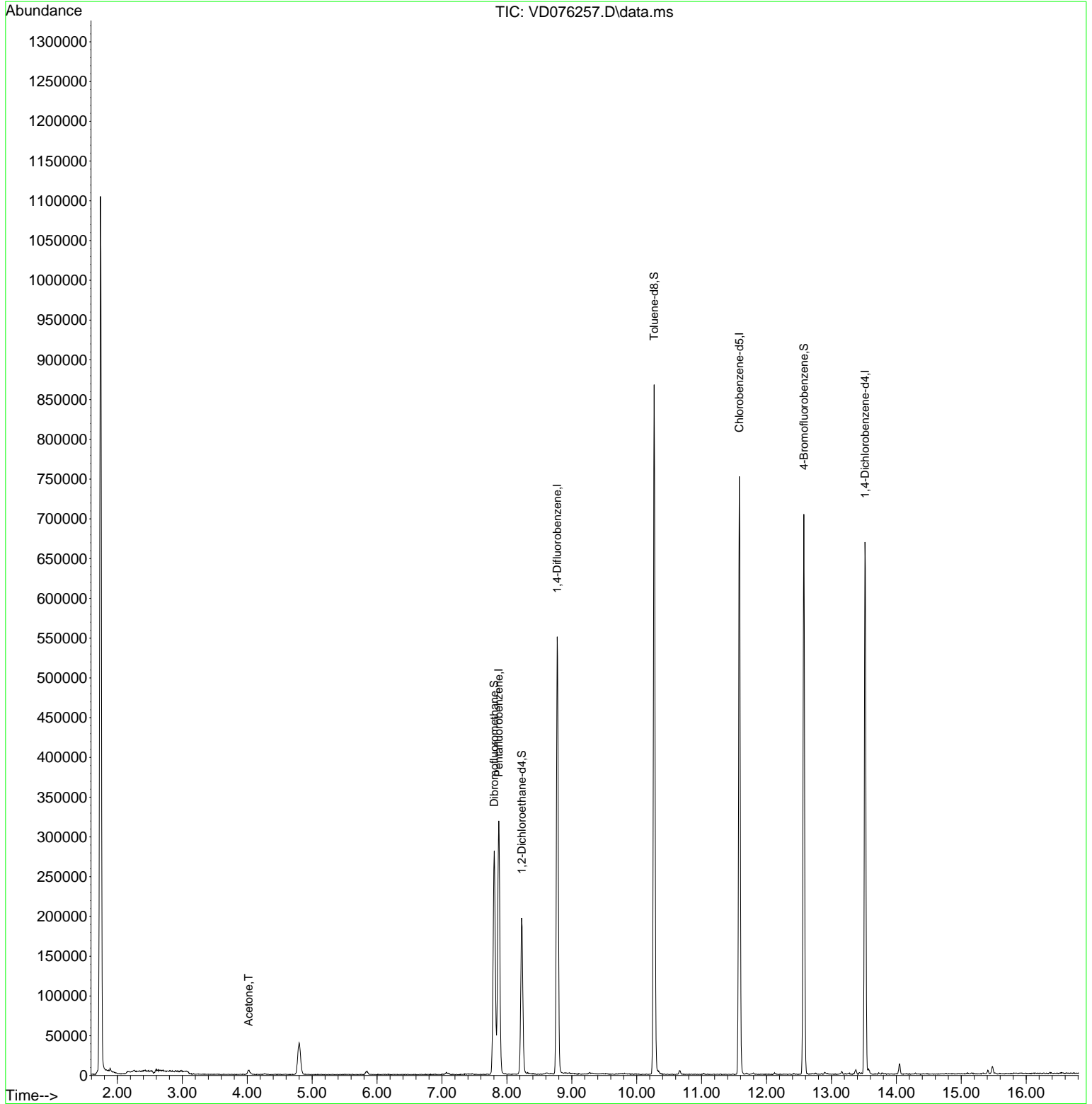
Compound	R.T.	QIon	Response	Conc	Units	Dev(Min)
-----						
Internal Standards						
1) Pentafluorobenzene	7.875	168	263904	50.000	ug/l	0.00
34) 1,4-Difluorobenzene	8.775	114	525489	50.000	ug/l	0.00
63) Chlorobenzene-d5	11.581	117	464296	50.000	ug/l	0.00
72) 1,4-Dichlorobenzene-d4	13.516	152	194194	50.000	ug/l	0.00
System Monitoring Compounds						
33) 1,2-Dichloroethane-d4	8.228	65	147244	57.730	ug/l	0.00
Spiked Amount	50.000	Range	50 - 163	Recovery	=	115.460%
35) Dibromofluoromethane	7.805	113	204370	56.265	ug/l	0.00
Spiked Amount	50.000	Range	54 - 147	Recovery	=	112.540%
50) Toluene-d8	10.269	98	611184	43.164	ug/l	0.00
Spiked Amount	50.000	Range	58 - 134	Recovery	=	86.320%
62) 4-Bromofluorobenzene	12.575	95	208971	53.128	ug/l	0.00
Spiked Amount	50.000	Range	30 - 143	Recovery	=	106.260%
Target Compounds						
16) Acetone	4.022	43	9528	18.776	ug/l	90
-----						

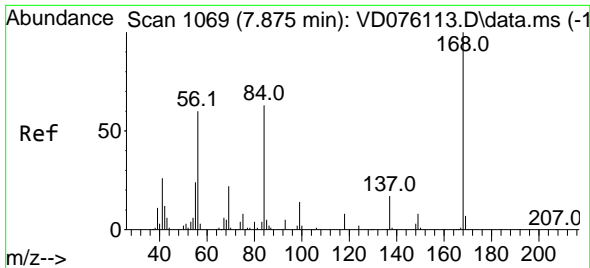
(#) = qualifier out of range (m) = manual integration (+) = signals summed

Data Path : Z:\voasrv\HPCHEM1\MSVOA\_D\Data\VD052623\  
 Data File : VD076257.D  
 Acq On : 26 May 2023 14:12  
 Operator : KP/SY  
 Sample : 02913-01RE  
 Misc : 6.01G/5.00ml/MSVOA\_D/SOIL  
 ALS Vial : 10 Sample Multiplier: 1

Instrument :  
 MSVOA\_D  
 ClientSampleId :  
 TP-70A

Quant Time: May 26 23:16:15 2023  
 Quant Method : Z:\voasrv\HPCHEM1\MSVOA\_D\Method\82D051523S.M  
 Quant Title : SW846 8260  
 QLast Update : Tue May 16 10:08:53 2023  
 Response via : Initial Calibration

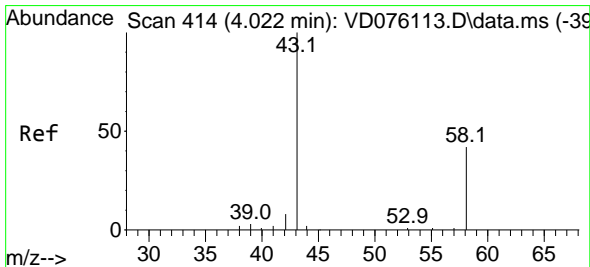
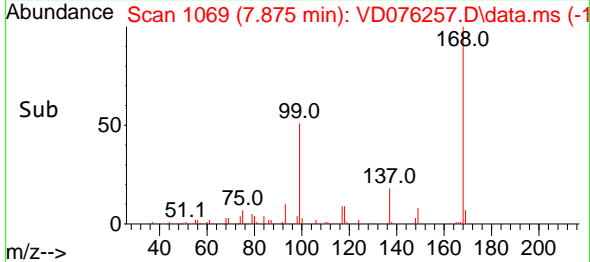
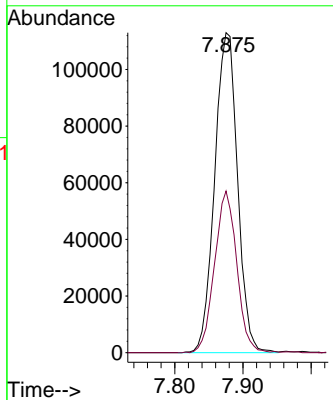
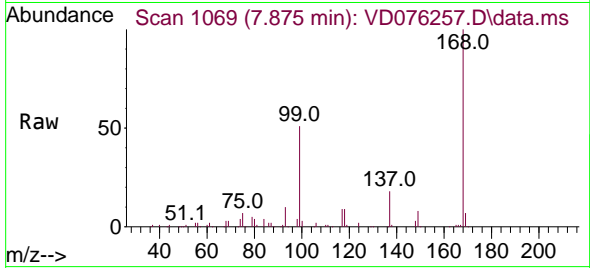




#1  
 Pentafluorobenzene  
 Concen: 50.000 ug/l  
 RT: 7.875 min Scan# 1069  
 Delta R.T. 0.000 min  
 Lab File: VD076257.D  
 Acq: 26 May 2023 14:12

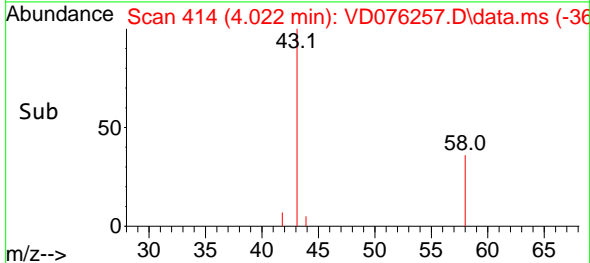
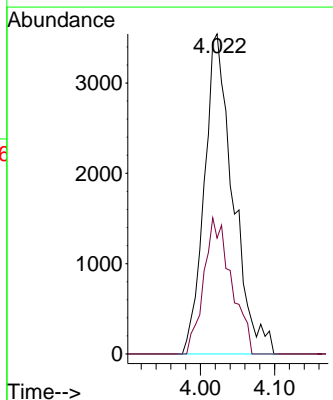
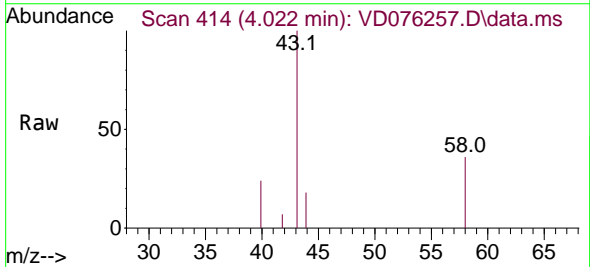
Instrument :  
 MSVOA\_D  
 ClientSampleId :  
 TP-70A

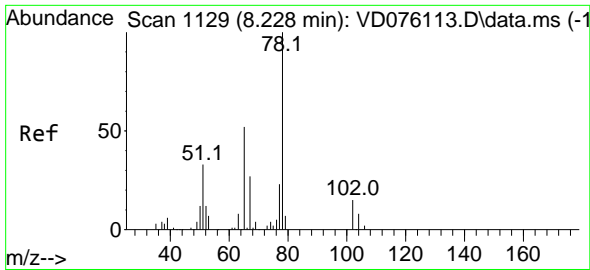
Tgt Ion:168 Resp: 263904  
 Ion Ratio Lower Upper  
 168 100  
 99 50.5 43.8 65.6



#16  
 Acetone  
 Concen: 18.776 ug/l  
 RT: 4.022 min Scan# 414  
 Delta R.T. 0.000 min  
 Lab File: VD076257.D  
 Acq: 26 May 2023 14:12

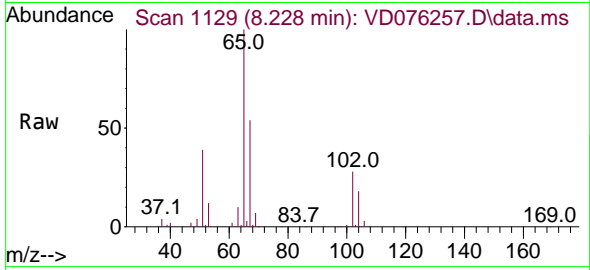
Tgt Ion: 43 Resp: 9528  
 Ion Ratio Lower Upper  
 43 100  
 58 36.2 24.4 36.6



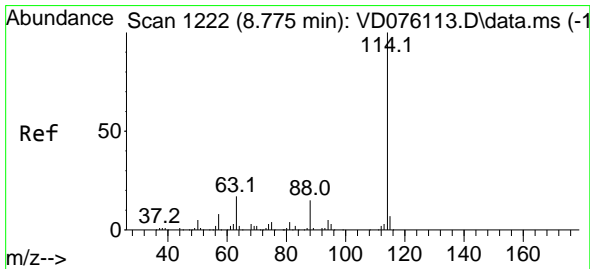
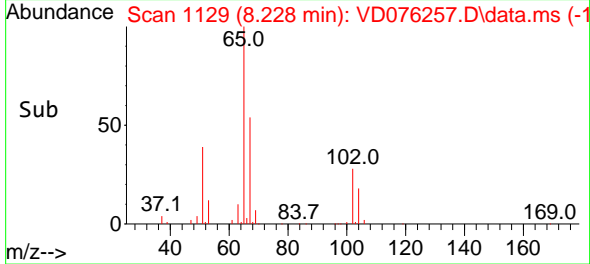
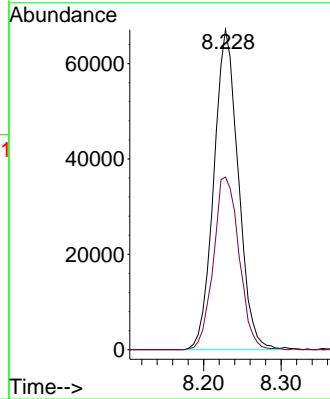


#33  
 1,2-Dichloroethane-d4  
 Concen: 57.730 ug/l  
 RT: 8.228 min Scan# 1129  
 Delta R.T. -0.006 min  
 Lab File: VD076257.D  
 Acq: 26 May 2023 14:12

Instrument : MSVOA\_D  
 ClientSampleId : TP-70A

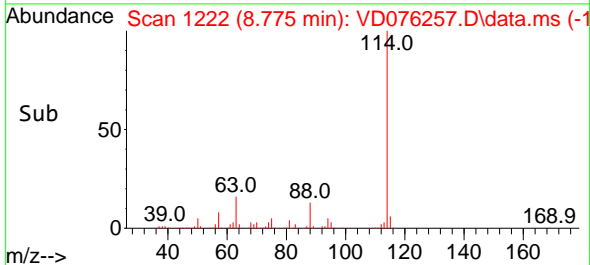
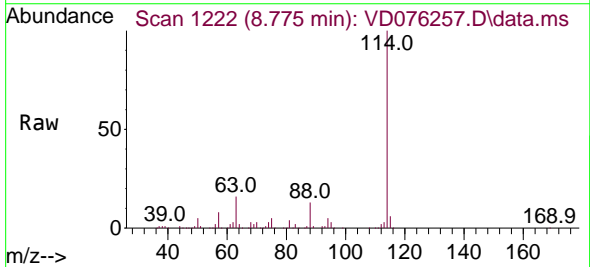
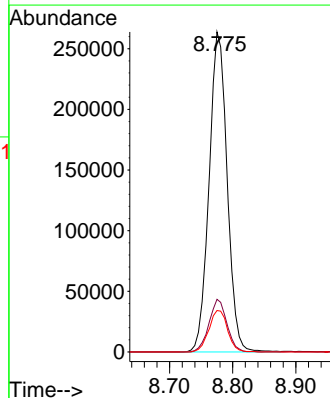


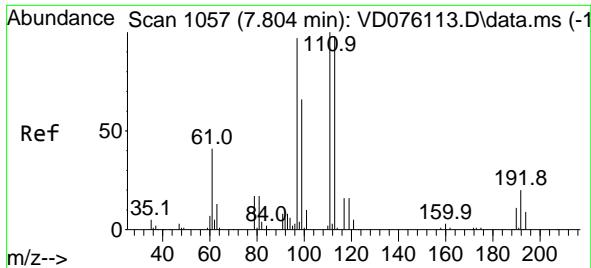
Tgt Ion: 65 Resp: 147244  
 Ion Ratio Lower Upper  
 65 100  
 67 56.6 0.0 102.2



#34  
 1,4-Difluorobenzene  
 Concen: 50.000 ug/l  
 RT: 8.775 min Scan# 1222  
 Delta R.T. 0.000 min  
 Lab File: VD076257.D  
 Acq: 26 May 2023 14:12

Tgt Ion: 114 Resp: 525489  
 Ion Ratio Lower Upper  
 114 100  
 63 16.4 0.0 41.6  
 88 13.0 0.0 30.6



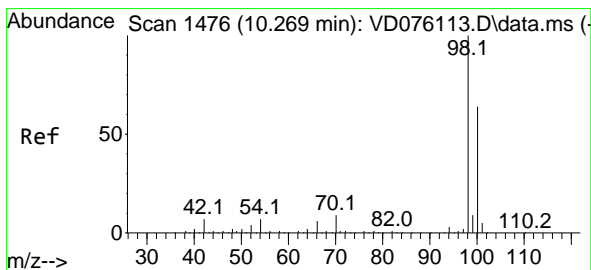
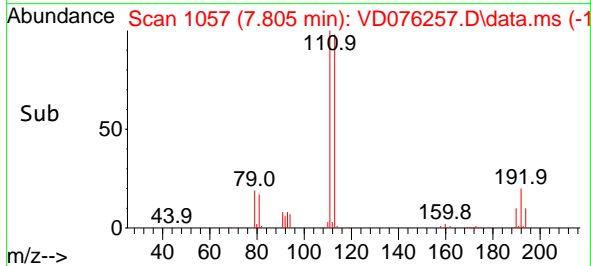
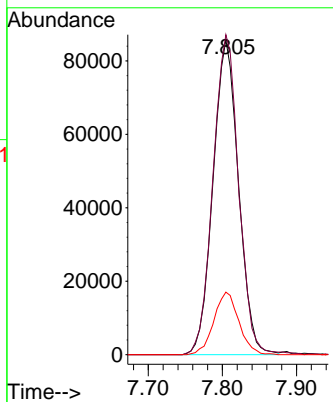
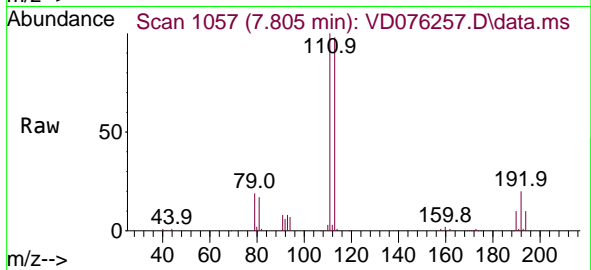


#35  
 Dibromofluoromethane  
 Concen: 56.265 ug/l  
 RT: 7.805 min Scan# 1057  
 Delta R.T. -0.000 min  
 Lab File: VD076257.D  
 Acq: 26 May 2023 14:12

Instrument : MSVOA\_D  
 ClientSampleId : TP-70A

Tgt Ion:113 Resp: 204370

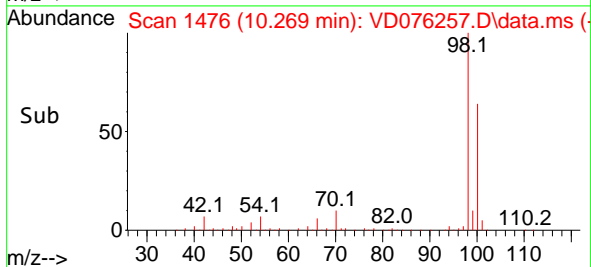
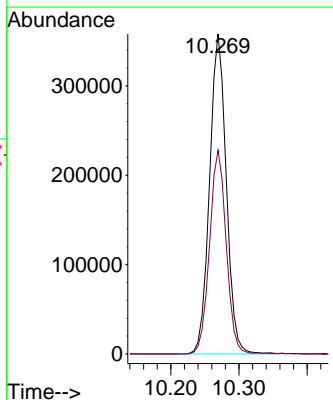
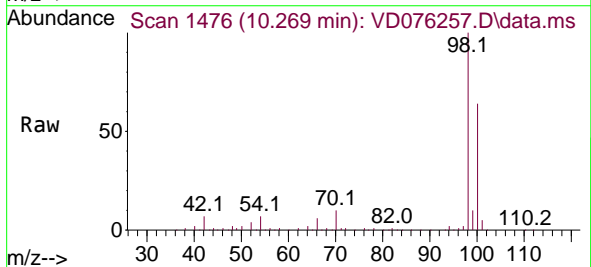
Ion	Ratio	Lower	Upper
113	100		
111	102.6	81.4	122.0
192	19.6	15.2	22.8

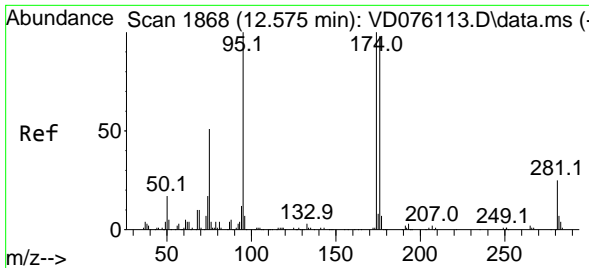


#50  
 Toluene-d8  
 Concen: 43.164 ug/l  
 RT: 10.269 min Scan# 1476  
 Delta R.T. 0.000 min  
 Lab File: VD076257.D  
 Acq: 26 May 2023 14:12

Tgt Ion: 98 Resp: 611184

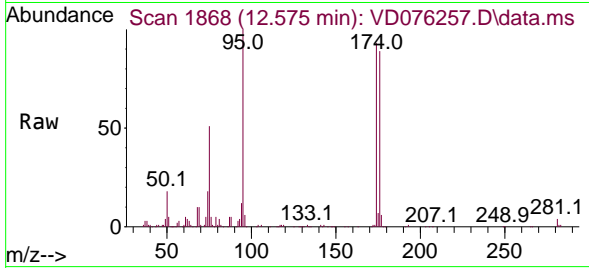
Ion	Ratio	Lower	Upper
98	100		
100	63.5	52.1	78.1



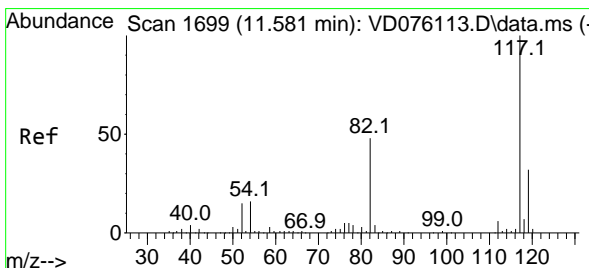
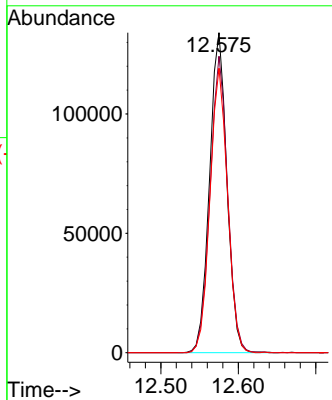
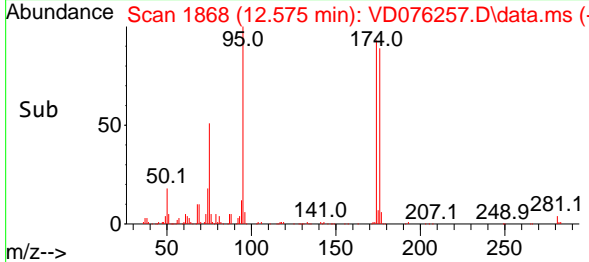


#62  
 4-Bromofluorobenzene  
 Concen: 53.128 ug/l  
 RT: 12.575 min Scan# 1868  
 Delta R.T. -0.000 min  
 Lab File: VD076257.D  
 Acq: 26 May 2023 14:12

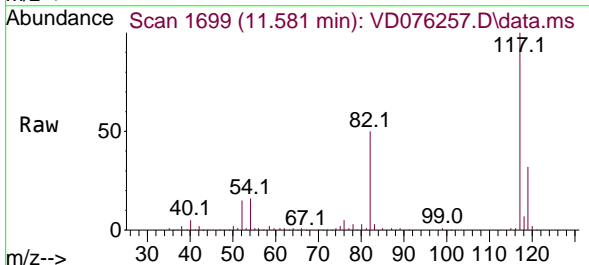
Instrument : MSVOA\_D  
 ClientSampleId : TP-70A



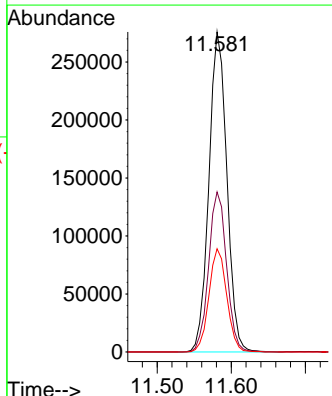
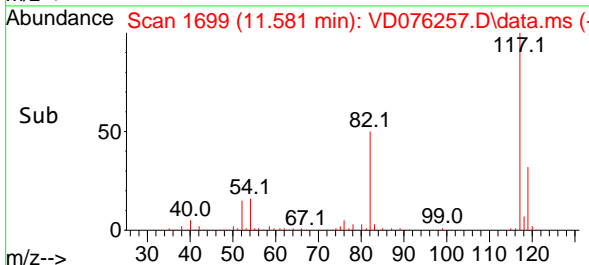
Tgt Ion: 95 Resp: 208971  
 Ion Ratio Lower Upper  
 95 100  
 174 93.8 0.0 164.0  
 176 89.6 0.0 156.8

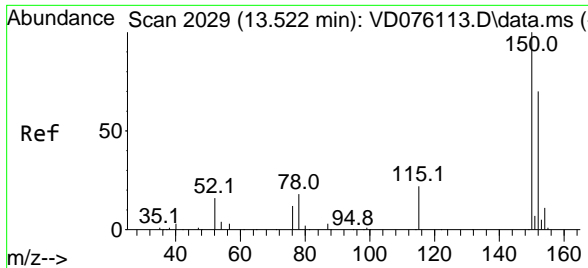


#63  
 Chlorobenzene-d5  
 Concen: 50.000 ug/l  
 RT: 11.581 min Scan# 1699  
 Delta R.T. -0.000 min  
 Lab File: VD076257.D  
 Acq: 26 May 2023 14:12



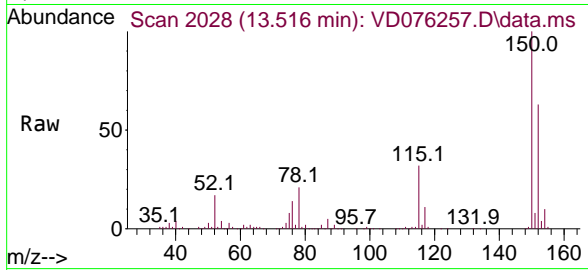
Tgt Ion: 117 Resp: 464296  
 Ion Ratio Lower Upper  
 117 100  
 82 50.0 44.0 66.0  
 119 32.2 25.1 37.7





#72  
 1,4-Dichlorobenzene-d4  
 Concen: 50.000 ug/l  
 RT: 13.516 min Scan# 20  
 Delta R.T. -0.006 min  
 Lab File: VD076257.D  
 Acq: 26 May 2023 14:12

Instrument :  
 MSVOA\_D  
 ClientSampleId :  
 TP-70A



Tgt Ion:152 Resp: 194194

Ion	Ratio	Lower	Upper
152	100		
115	52.3	30.1	90.3
150	156.9	0.0	364.8

