

Data Path : Z:\voasrv\HPCHEM1\MSVOA\_D\Data\VD060723\  
 Data File : VD076365.D  
 Acq On : 07 Jun 2023 20:48  
 Operator : KP/SY  
 Sample : 03047-04RE  
 Misc : 5.04G/5.00ml/MSVOA\_D/SOIL  
 ALS Vial : 17 Sample Multiplier: 1

Instrument :  
 MSVOA\_D  
 ClientSampleId :  
 SB33A

Quant Time: Jun 08 01:19:53 2023  
 Quant Method : Z:\voasrv\HPCHEM1\MSVOA\_D\Method\82D060523S.M  
 Quant Title : SW846 8260  
 QLast Update : Tue Jun 06 02:52:23 2023  
 Response via : Initial Calibration

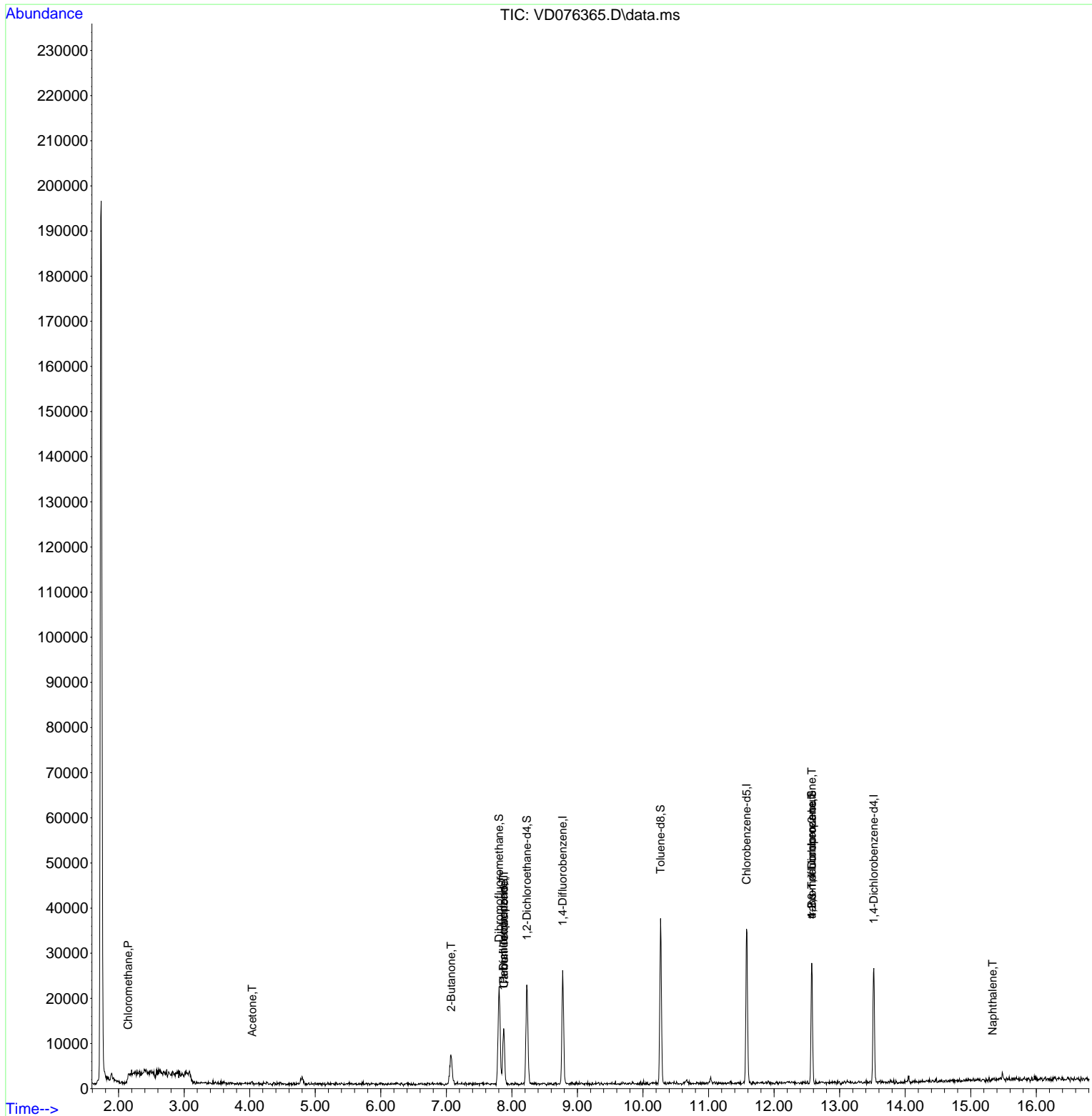
Compound	R.T.	QIon	Response	Conc	Units	Dev(Min)
-----						
Internal Standards						
1) Pentafluorobenzene	7.875	168	11142	50.000	ug/l	0.00
34) 1,4-Difluorobenzene	8.775	114	24110	50.000	ug/l	0.00
63) Chlorobenzene-d5	11.581	117	24717	50.000	ug/l	0.00
72) 1,4-Dichlorobenzene-d4	13.522	152	8404	50.000	ug/l	0.00
System Monitoring Compounds						
33) 1,2-Dichloroethane-d4	8.228	65	17264	172.931	ug/l	0.00
Spiked Amount	50.000	Range 50 - 163	Recovery	=	345.860%#	
35) Dibromofluoromethane	7.804	113	14987	97.901	ug/l	0.00
Spiked Amount	50.000	Range 54 - 147	Recovery	=	195.800%#	
50) Toluene-d8	10.269	98	26225	43.027	ug/l	0.00
Spiked Amount	50.000	Range 58 - 134	Recovery	=	86.060%	
62) 4-Bromofluorobenzene	12.575	95	8517	52.803	ug/l	0.00
Spiked Amount	50.000	Range 30 - 143	Recovery	=	105.600%	
Target Compounds						
					Qvalue	
3) Chloromethane	2.146	50	209	1.008	ug/l #	41
16) Acetone	4.040	43	339	18.539	ug/l #	32
25) 2-Butanone	7.075	43	72	2.844	ug/l #	37
36) 1,1-Dichloropropene	7.869	75	941	4.278	ug/l #	39
38) Carbon Tetrachloride	7.881	117	1048	5.436	ug/l #	11
76) 1,2,3-Trichloropropane	12.575	75	4073	51.920	ug/l #	100
81) trans-1,4-Dichloro-2-b...	12.575	75	4073	124.351	ug/l #	17
95) Naphthalene	15.333	128	72	3.516	ug/l #	69
-----						

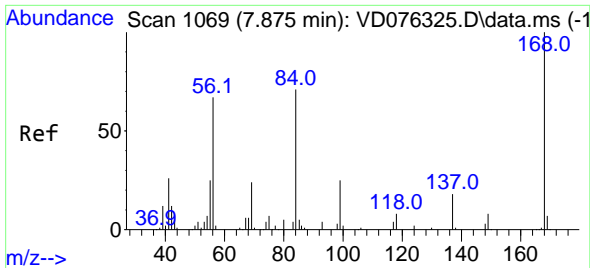
(#) = qualifier out of range (m) = manual integration (+) = signals summed

Data Path : Z:\voasrv\HPCHEM1\MSVOA\_D\Data\VD060723\  
 Data File : VD076365.D  
 Acq On : 07 Jun 2023 20:48  
 Operator : KP/SY  
 Sample : 03047-04RE  
 Misc : 5.04G/5.00ml/MSVOA\_D/SOIL  
 ALS Vial : 17 Sample Multiplier: 1

Instrument :  
 MSVOA\_D  
 ClientSampleId :  
 SB33A

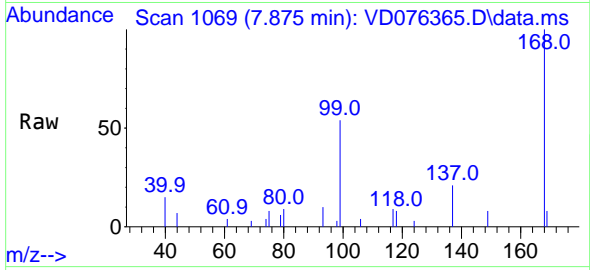
Quant Time: Jun 08 01:19:53 2023  
 Quant Method : Z:\voasrv\HPCHEM1\MSVOA\_D\Method\82D060523S.M  
 Quant Title : SW846 8260  
 QLast Update : Tue Jun 06 02:52:23 2023  
 Response via : Initial Calibration



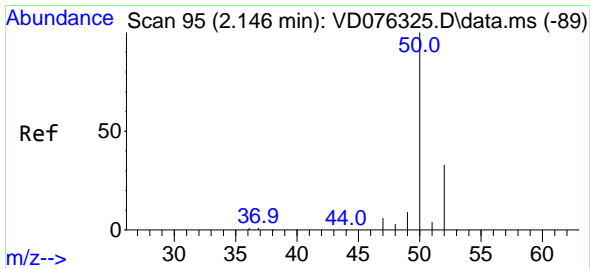
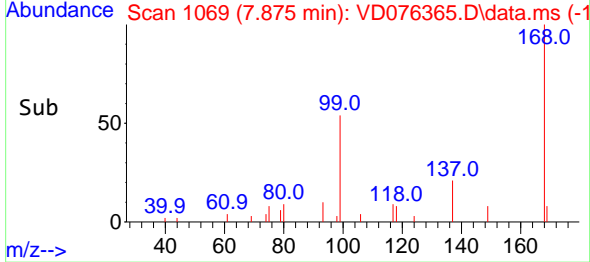
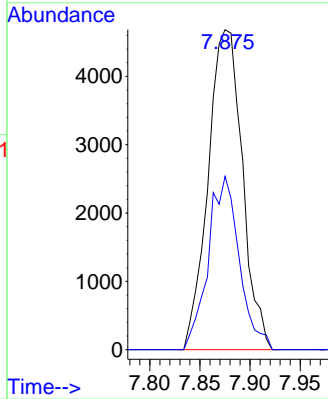


#1  
 Pentafluorobenzene  
 Concen: 50.000 ug/l  
 RT: 7.875 min Scan# 1069  
 Delta R.T. 0.000 min  
 Lab File: VD076365.D  
 Acq: 07 Jun 2023 20:48

Instrument : MSVOA\_D  
 ClientSampleId : SB33A

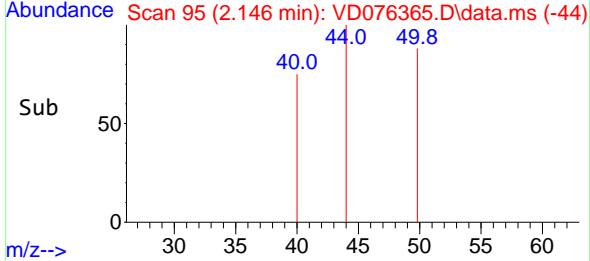
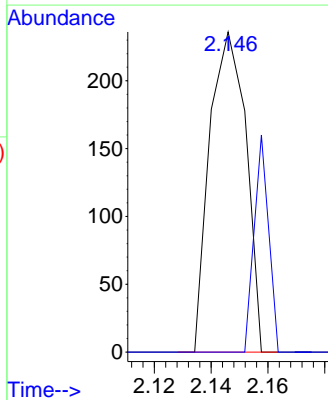
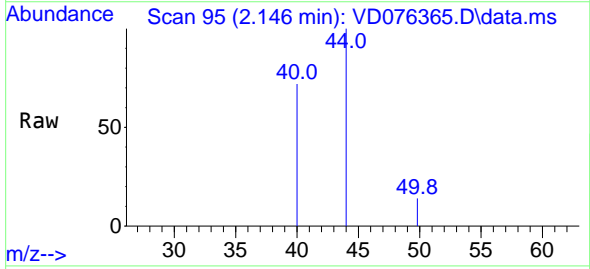


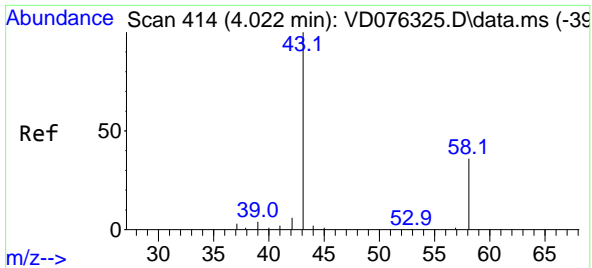
Tgt Ion:168 Resp: 11142  
 Ion Ratio Lower Upper  
 168 100  
 99 54.2 36.7 55.1



#3  
 Chloromethane  
 Concen: 1.008 ug/l  
 RT: 2.146 min Scan# 95  
 Delta R.T. -0.000 min  
 Lab File: VD076365.D  
 Acq: 07 Jun 2023 20:48

Tgt Ion: 50 Resp: 209  
 Ion Ratio Lower Upper  
 50 100  
 52 0.0 26.6 40.0#

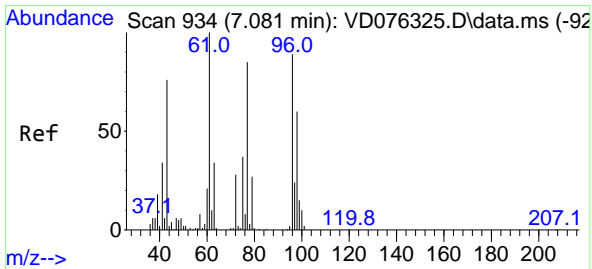
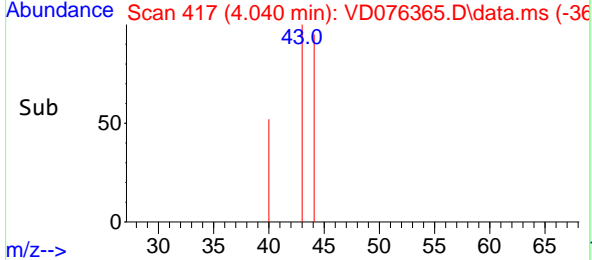
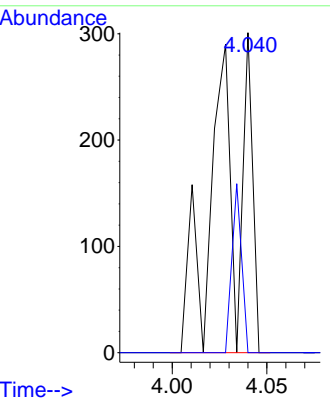
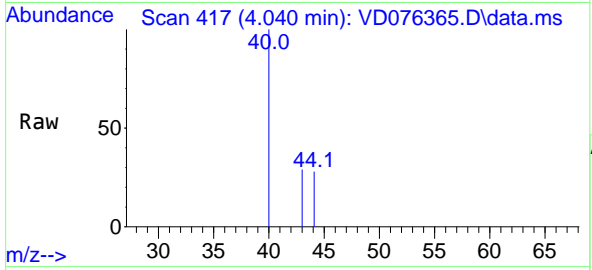




#16  
 Acetone  
 Concen: 18.539 ug/l  
 RT: 4.040 min Scan# 417  
 Delta R.T. 0.018 min  
 Lab File: VD076365.D  
 Acq: 07 Jun 2023 20:48

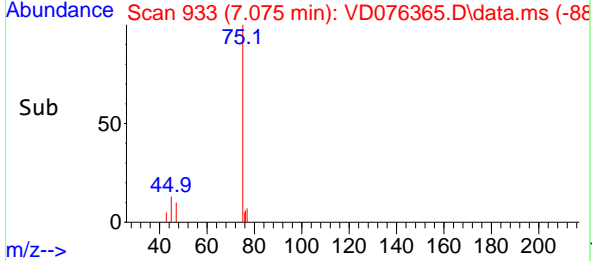
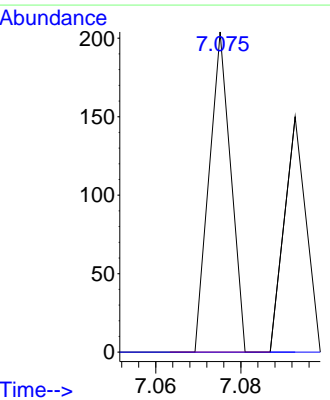
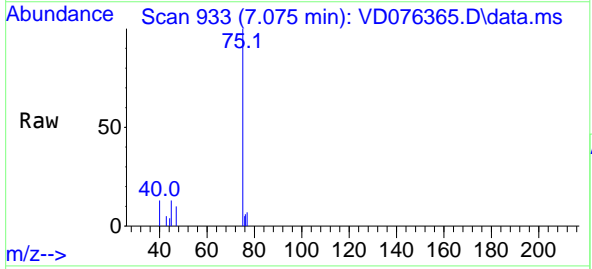
Instrument : MSVOA\_D  
 ClientSampleId : SB33A

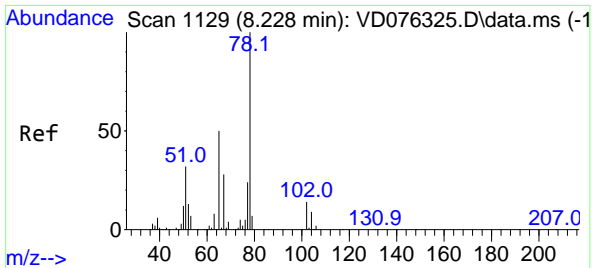
Tgt Ion: 43 Resp: 339  
 Ion Ratio Lower Upper  
 43 100  
 58 0.0 34.7 52.1#



#25  
 2-Butanone  
 Concen: 2.844 ug/l  
 RT: 7.075 min Scan# 933  
 Delta R.T. -0.006 min  
 Lab File: VD076365.D  
 Acq: 07 Jun 2023 20:48

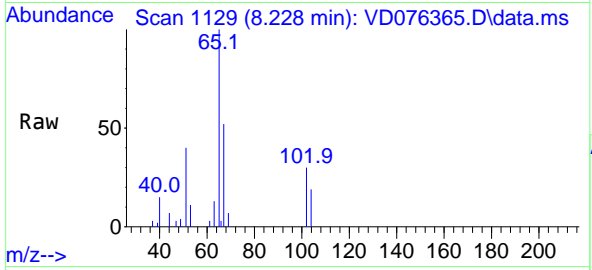
Tgt Ion: 43 Resp: 72  
 Ion Ratio Lower Upper  
 43 100  
 72 0.0 30.7 46.1#



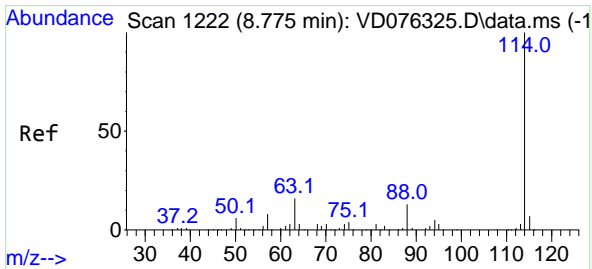
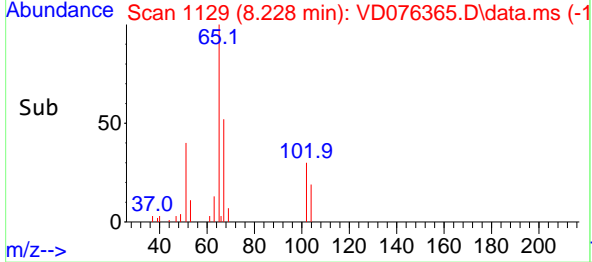
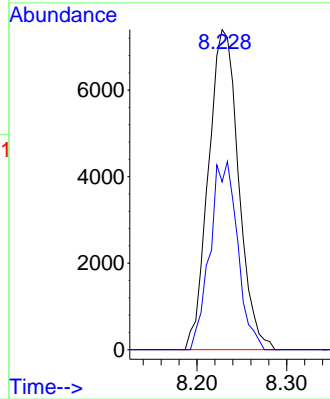


#33  
 1,2-Dichloroethane-d4  
 Concen: 172.931 ug/l  
 RT: 8.228 min Scan# 1129  
 Delta R.T. -0.000 min  
 Lab File: VD076365.D  
 Acq: 07 Jun 2023 20:48

Instrument : MSVOA\_D  
 ClientSampleId : SB33A

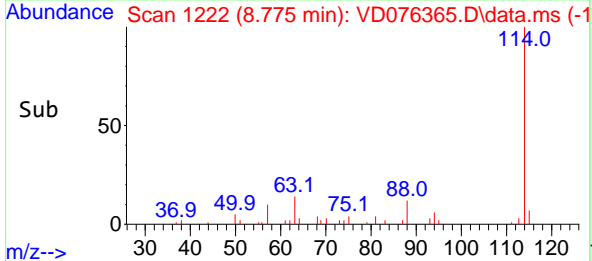
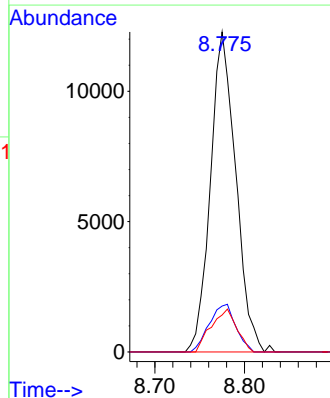
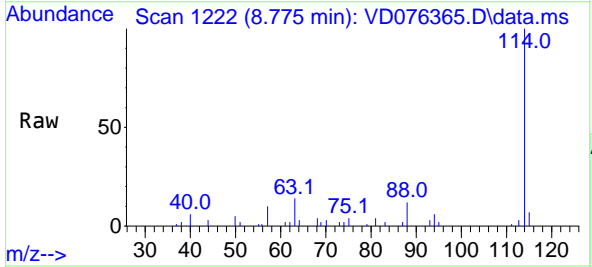


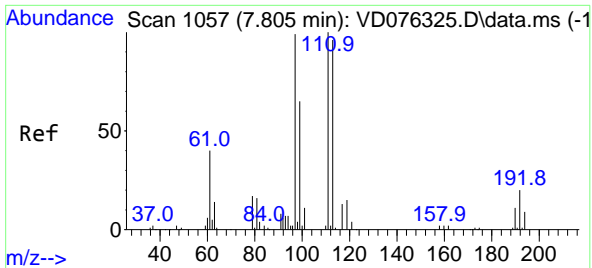
Tgt Ion: 65 Resp: 17264  
 Ion Ratio Lower Upper  
 65 100  
 67 53.9 0.0 115.0



#34  
 1,4-Difluorobenzene  
 Concen: 50.000 ug/l  
 RT: 8.775 min Scan# 1222  
 Delta R.T. -0.000 min  
 Lab File: VD076365.D  
 Acq: 07 Jun 2023 20:48

Tgt Ion: 114 Resp: 24110  
 Ion Ratio Lower Upper  
 114 100  
 63 14.4 0.0 33.4  
 88 11.6 0.0 26.2

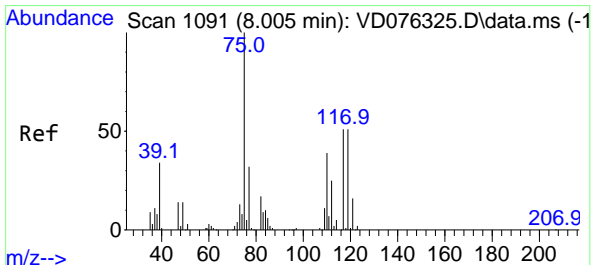
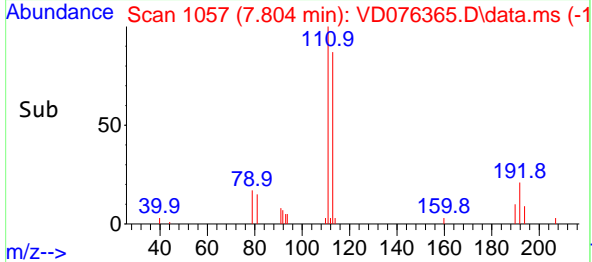
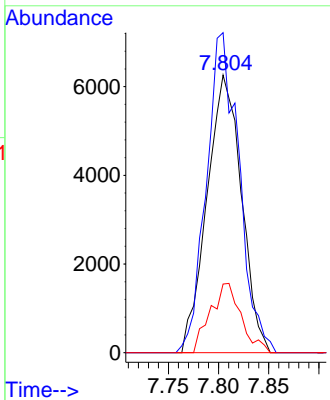
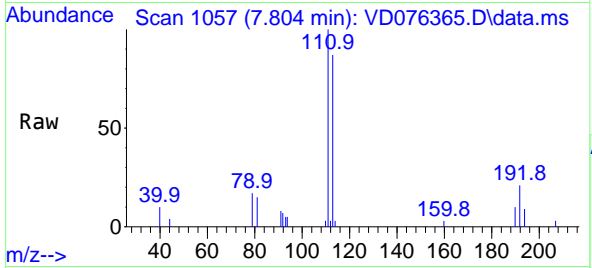




#35  
 Dibromofluoromethane  
 Concen: 97.901 ug/l  
 RT: 7.804 min Scan# 1067  
 Delta R.T. -0.000 min  
 Lab File: VD076365.D  
 Acq: 07 Jun 2023 20:48

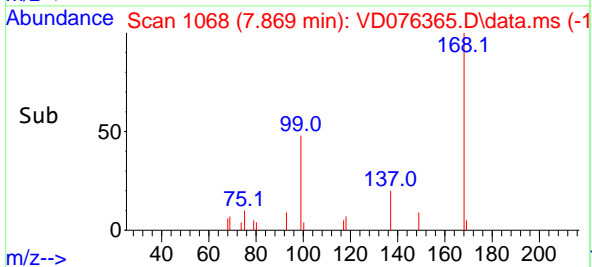
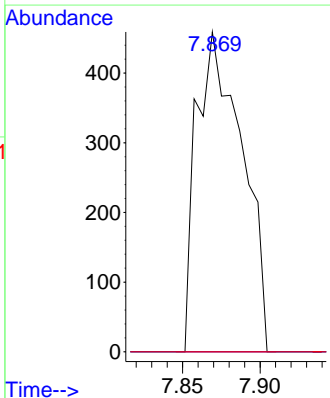
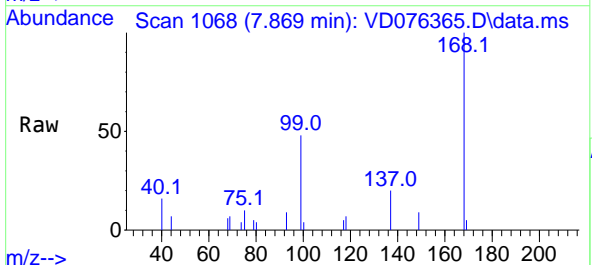
Instrument : MSVOA\_D  
 ClientSampleId : SB33A

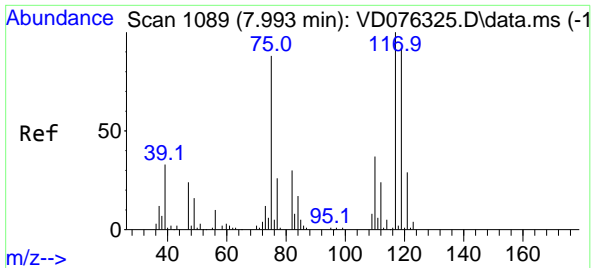
Tgt Ion	Resp	Lower	Upper
113	14987		
113	100		
111	109.2	84.7	127.1
192	22.3	16.8	25.2



#36  
 1,1-Dichloropropene  
 Concen: 4.278 ug/l  
 RT: 7.869 min Scan# 1068  
 Delta R.T. -0.135 min  
 Lab File: VD076365.D  
 Acq: 07 Jun 2023 20:48

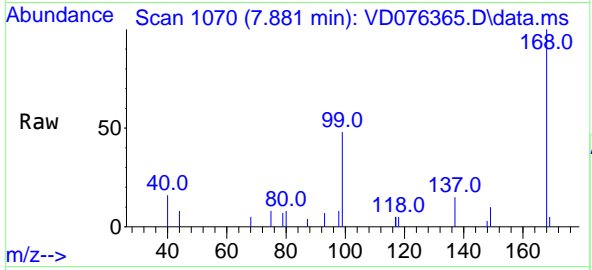
Tgt Ion	Resp	Lower	Upper
75	941		
75	100		
110	0.0	19.9	59.6#
77	0.0	24.7	37.1#



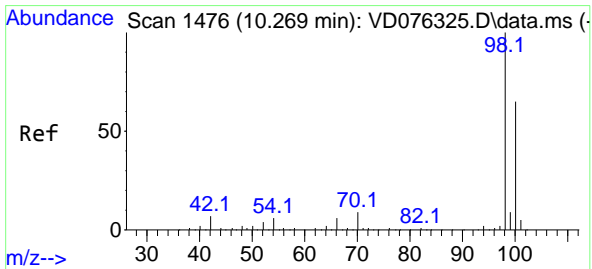
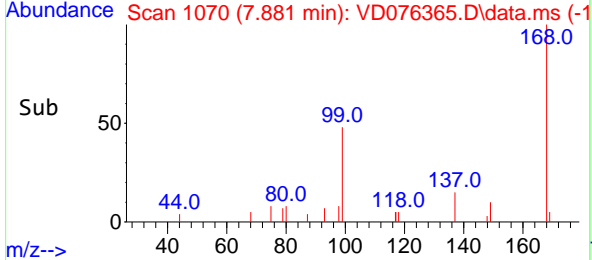
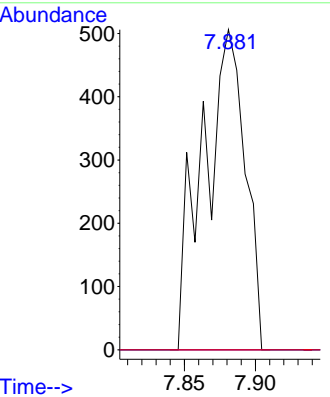


#38  
 Carbon Tetrachloride  
 Concen: 5.436 ug/l  
 RT: 7.881 min Scan# 10  
 Delta R.T. -0.112 min  
 Lab File: VD076365.D  
 Acq: 07 Jun 2023 20:48

Instrument : MSVOA\_D  
 ClientSampleId : SB33A

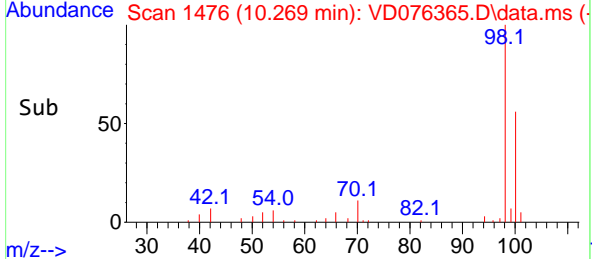
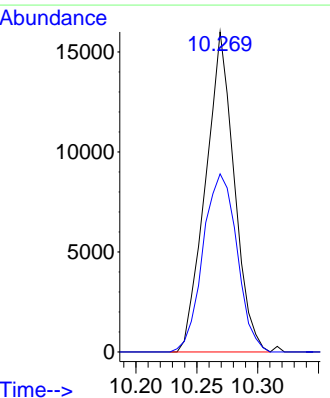
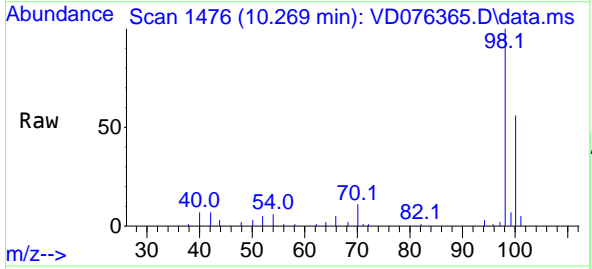


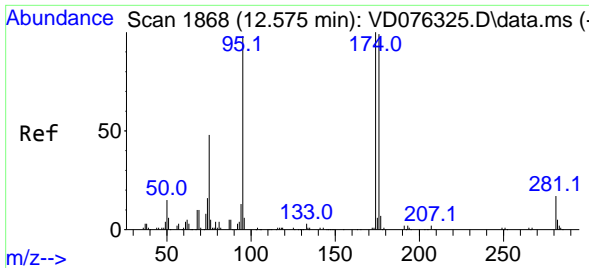
Tgt Ion:117 Resp: 1048  
 Ion Ratio Lower Upper  
 117 100  
 119 0.0 78.0 117.0#  
 121 0.0 24.2 36.2#



#50  
 Toluene-d8  
 Concen: 43.027 ug/l  
 RT: 10.269 min Scan# 1476  
 Delta R.T. -0.000 min  
 Lab File: VD076365.D  
 Acq: 07 Jun 2023 20:48

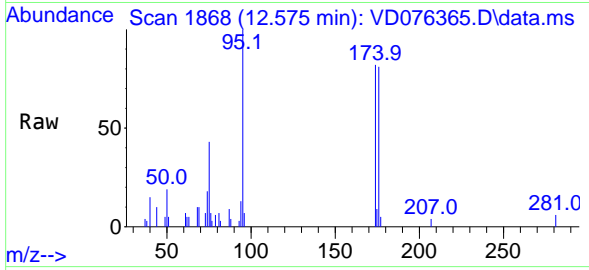
Tgt Ion: 98 Resp: 26225  
 Ion Ratio Lower Upper  
 98 100  
 100 65.9 50.3 75.5





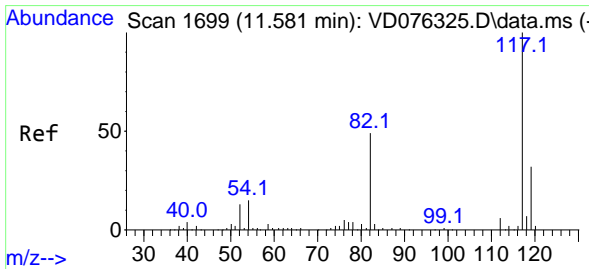
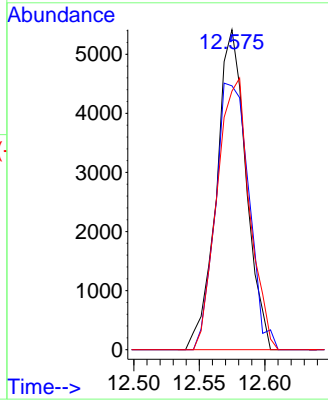
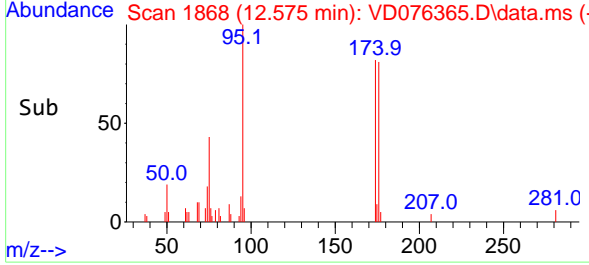
#62  
 4-Bromofluorobenzene  
 Concen: 52.803 ug/l  
 RT: 12.575 min Scan# 1868  
 Delta R.T. -0.000 min  
 Lab File: VD076365.D  
 Acq: 07 Jun 2023 20:48

Instrument : MSVOA\_D  
 ClientSampleId : SB33A

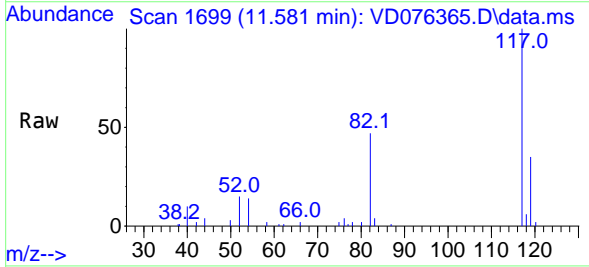


Tgt Ion: 95 Resp: 8517

Ion	Ratio	Lower	Upper
95	100		
174	93.8	0.0	201.8
176	93.1	0.0	191.8

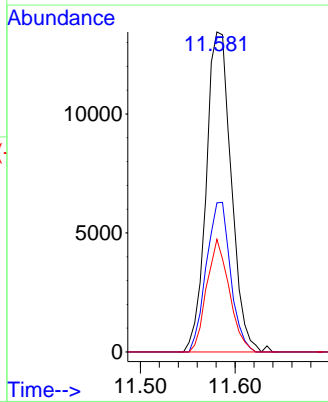
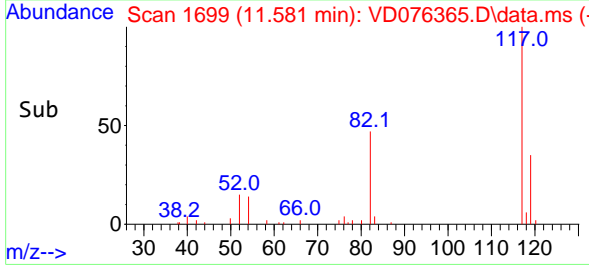


#63  
 Chlorobenzene-d5  
 Concen: 50.000 ug/l  
 RT: 11.581 min Scan# 1699  
 Delta R.T. -0.000 min  
 Lab File: VD076365.D  
 Acq: 07 Jun 2023 20:48

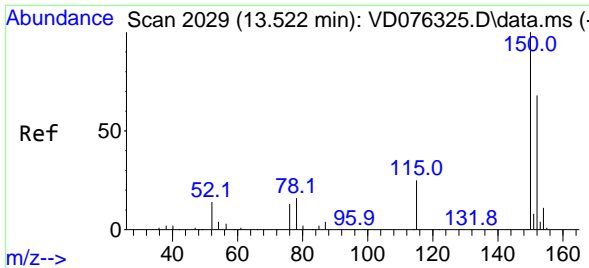


Tgt Ion: 117 Resp: 24717

Ion	Ratio	Lower	Upper
117	100		
82	46.6	38.3	57.5
119	35.2	25.0	37.4

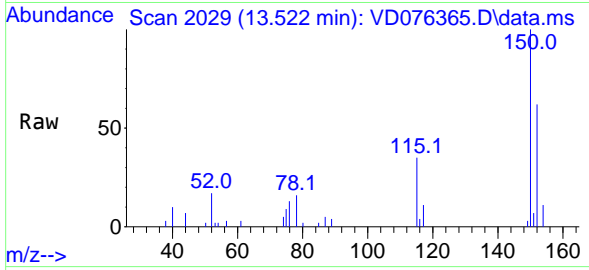




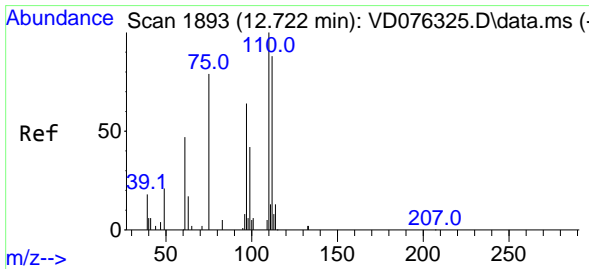
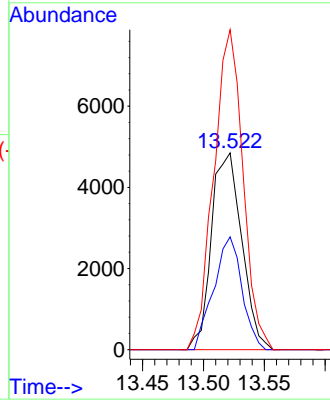
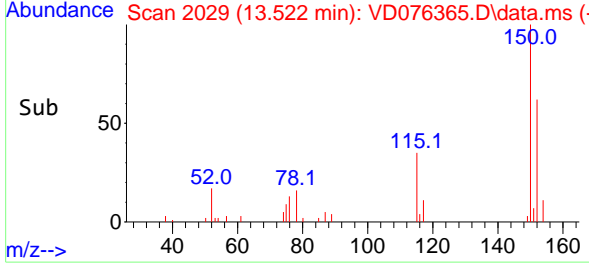


#72  
 1,4-Dichlorobenzene-d4  
 Concen: 50.000 ug/l  
 RT: 13.522 min Scan# 20  
 Delta R.T. -0.000 min  
 Lab File: VD076365.D  
 Acq: 07 Jun 2023 20:48

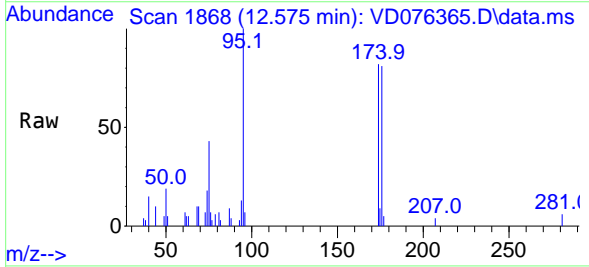
Instrument : MSVOA\_D  
 ClientSampleId : SB33A



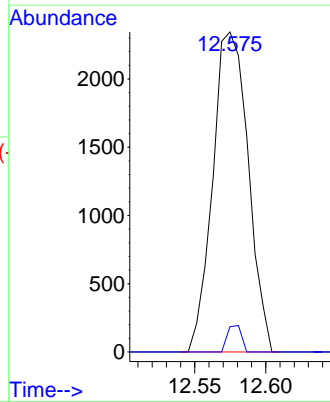
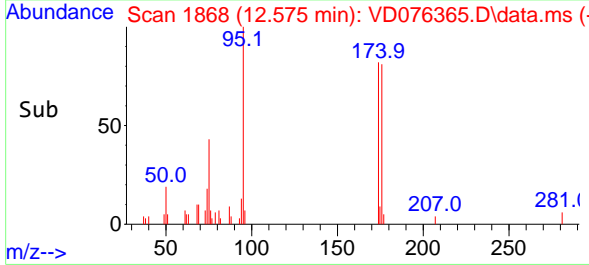
Tgt Ion:152 Resp: 8404  
 Ion Ratio Lower Upper  
 152 100  
 115 53.4 27.1 81.3  
 150 156.7 0.0 353.6

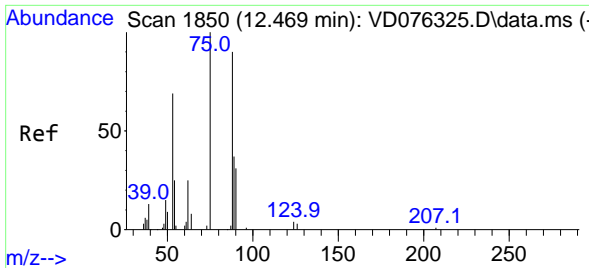


#76  
 1,2,3-Trichloropropane  
 Concen: 51.920 ug/l  
 RT: 12.575 min Scan# 1868  
 Delta R.T. -0.147 min  
 Lab File: VD076365.D  
 Acq: 07 Jun 2023 20:48



Tgt Ion: 75 Resp: 4073  
 Ion Ratio Lower Upper  
 75 100  
 77 3.3 0.0 0.0#



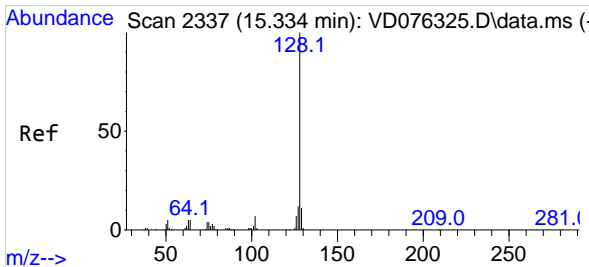
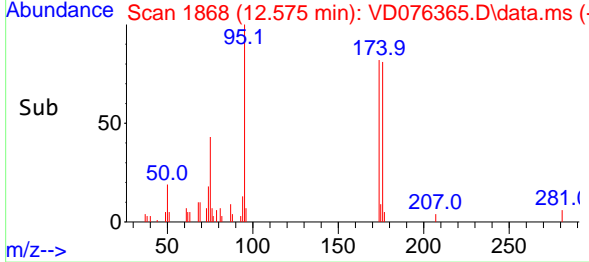
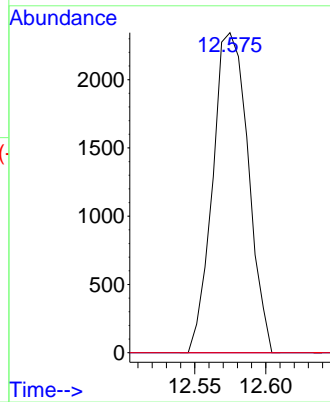
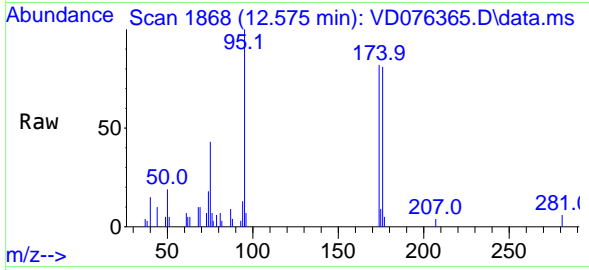


#81  
 trans-1,4-Dichloro-2-butene  
 Concen: 124.351 ug/l  
 RT: 12.575 min Scan# 1850  
 Delta R.T. 0.106 min  
 Lab File: VD076365.D  
 Acq: 07 Jun 2023 20:48

Instrument : MSVOA\_D  
 ClientSampleId : SB33A

Tgt Ion: 75 Resp: 4073

Ion	Ratio	Lower	Upper
75	100		
53	0.0	63.0	94.4#
89	0.0	37.9	56.9#



#95  
 Naphthalene  
 Concen: 3.516 ug/l  
 RT: 15.333 min Scan# 2337  
 Delta R.T. -0.001 min  
 Lab File: VD076365.D  
 Acq: 07 Jun 2023 20:48

Tgt Ion: 128 Resp: 72

Ion	Ratio	Lower	Upper
128	100		
127	0.0	10.5	15.7#
129	0.0	8.7	13.1#

