

Data Path : Z:\voasrv\HPCHEM1\MSVOA\_D\Data\VD060723\  
 Data File : VD076363.D  
 Acq On : 07 Jun 2023 19:49  
 Operator : KP/SY  
 Sample : 03047-01RE  
 Misc : 5.01/5.00ml/MSVOA\_D/SOIL  
 ALS Vial : 15 Sample Multiplier: 1

Instrument :  
 MSVOA\_D  
 ClientSampleId :  
 SB32ARE

Quant Time: Jun 08 01:19:36 2023  
 Quant Method : Z:\voasrv\HPCHEM1\MSVOA\_D\Method\82D060523S.M  
 Quant Title : SW846 8260  
 QLast Update : Tue Jun 06 02:52:23 2023  
 Response via : Initial Calibration

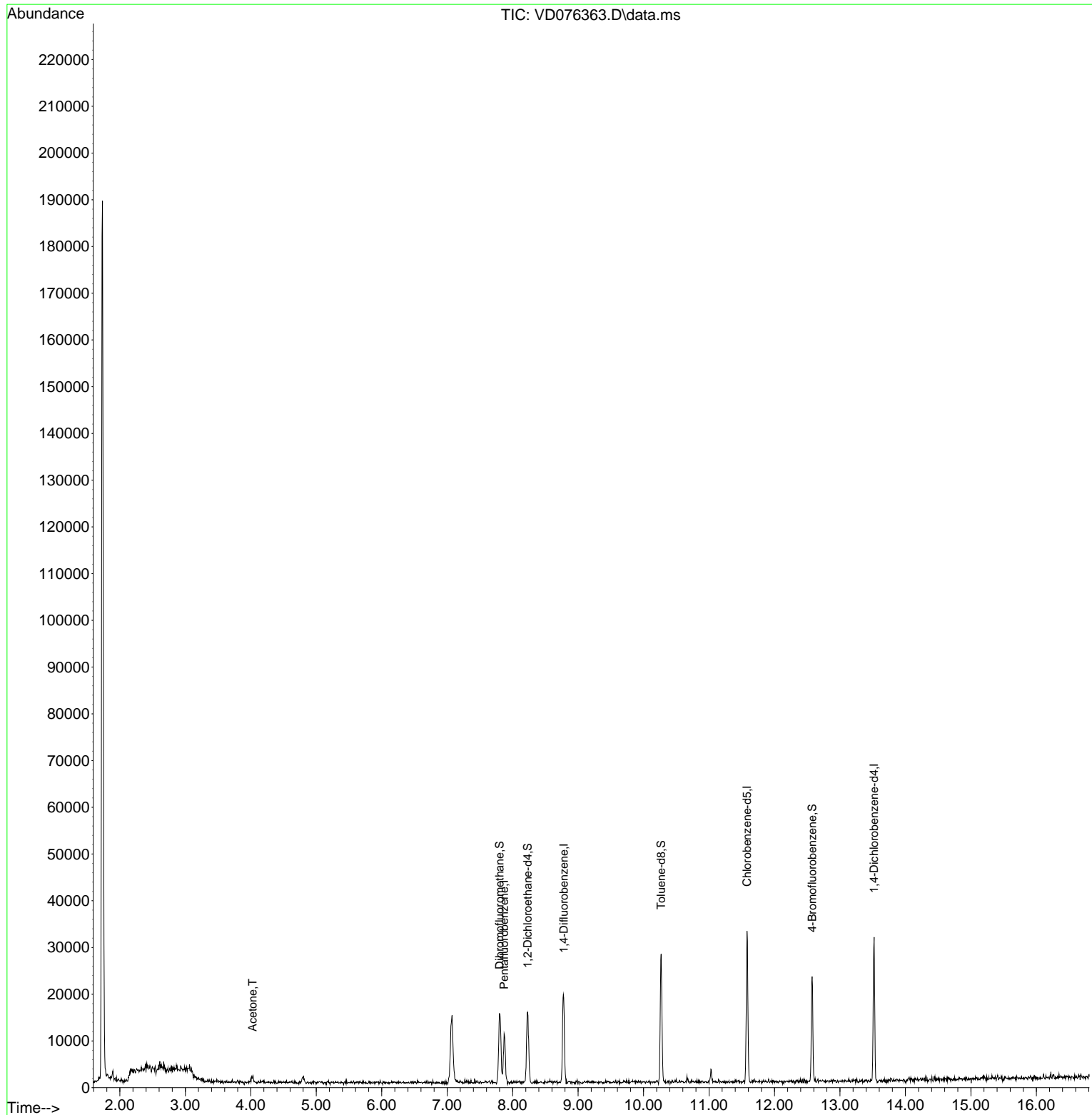
Compound	R.T.	QIon	Response	Conc	Units	Dev(Min)
-----						
Internal Standards						
1) Pentafluorobenzene	7.869	168	9036	50.000	ug/l	0.00
34) 1,4-Difluorobenzene	8.781	114	20110	50.000	ug/l	0.00
63) Chlorobenzene-d5	11.581	117	21130	50.000	ug/l	0.00
72) 1,4-Dichlorobenzene-d4	13.522	152	10428	50.000	ug/l	0.00
System Monitoring Compounds						
33) 1,2-Dichloroethane-d4	8.228	65	12779	157.839	ug/l	0.00
Spiked Amount	50.000	Range	50 - 163	Recovery	= 315.680%#	
35) Dibromofluoromethane	7.799	113	12032	94.231	ug/l	0.00
Spiked Amount	50.000	Range	54 - 147	Recovery	= 188.460%#	
50) Toluene-d8	10.269	98	20946	41.202	ug/l	0.00
Spiked Amount	50.000	Range	58 - 134	Recovery	= 82.400%	
62) 4-Bromofluorobenzene	12.575	95	7683	57.107	ug/l	0.00
Spiked Amount	50.000	Range	30 - 143	Recovery	= 114.220%	
Target Compounds						
16) Acetone	4.028	43	2236	150.783	ug/l #	Qvalue 86
-----						

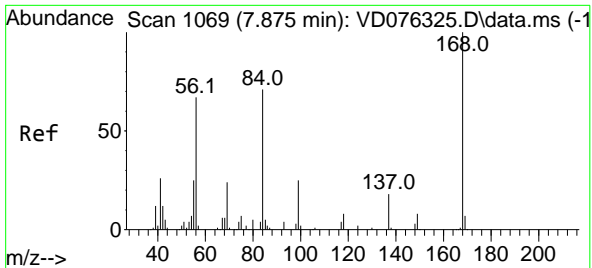
(#) = qualifier out of range (m) = manual integration (+) = signals summed

Data Path : Z:\voasrv\HPCHEM1\MSVOA\_D\Data\VD060723\  
 Data File : VD076363.D  
 Acq On : 07 Jun 2023 19:49  
 Operator : KP/SY  
 Sample : 03047-01RE  
 Misc : 5.01/5.00ml/MSVOA\_D/SOIL  
 ALS Vial : 15 Sample Multiplier: 1

Instrument :  
 MSVOA\_D  
 ClientSampleId :  
 SB32ARE

Quant Time: Jun 08 01:19:36 2023  
 Quant Method : Z:\voasrv\HPCHEM1\MSVOA\_D\Method\82D060523S.M  
 Quant Title : SW846 8260  
 QLast Update : Tue Jun 06 02:52:23 2023  
 Response via : Initial Calibration

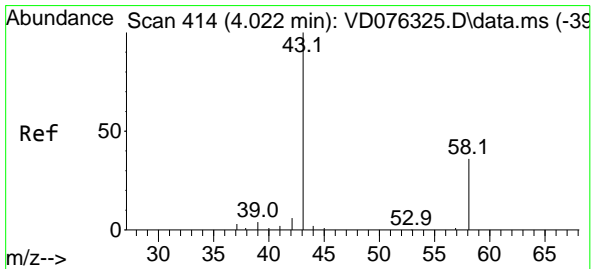
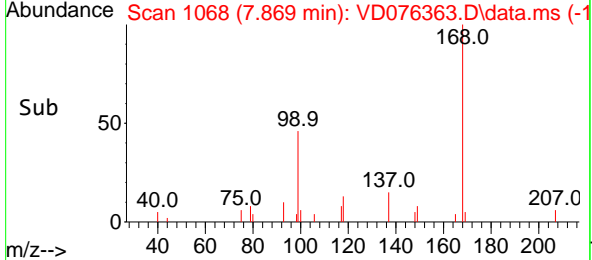
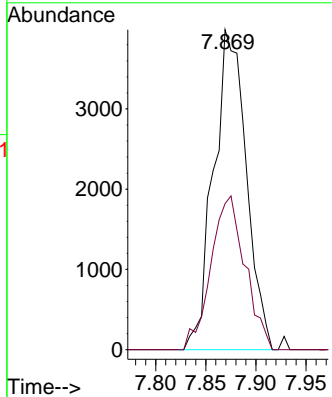
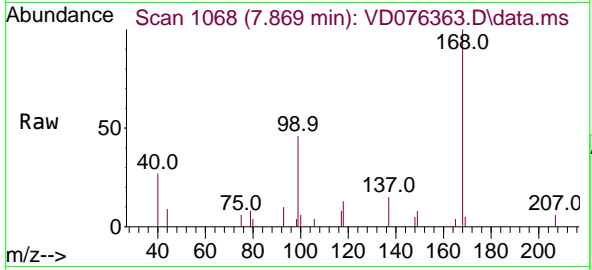




#1  
 Pentafluorobenzene  
 Concen: 50.000 ug/l  
 RT: 7.869 min Scan# 1068  
 Delta R.T. -0.006 min  
 Lab File: VD076363.D  
 Acq: 07 Jun 2023 19:49

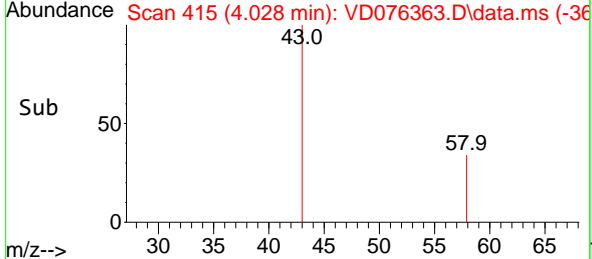
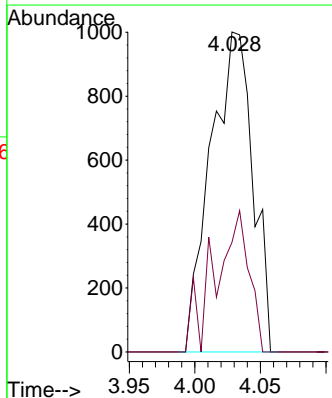
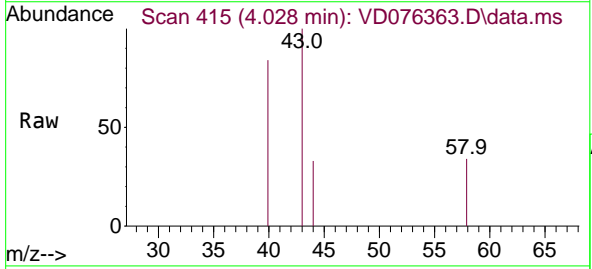
Instrument : MSVOA\_D  
 ClientSampleId : SB32ARE

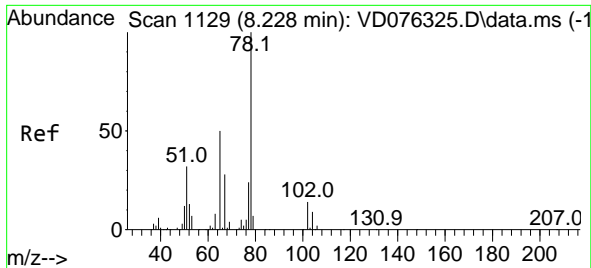
Tgt Ion:168 Resp: 9036  
 Ion Ratio Lower Upper  
 168 100  
 99 45.7 36.7 55.1



#16  
 Acetone  
 Concen: 150.783 ug/l  
 RT: 4.028 min Scan# 415  
 Delta R.T. 0.006 min  
 Lab File: VD076363.D  
 Acq: 07 Jun 2023 19:49

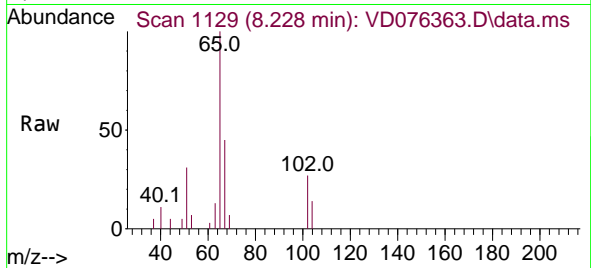
Tgt Ion: 43 Resp: 2236  
 Ion Ratio Lower Upper  
 43 100  
 58 34.3 34.7 52.1#



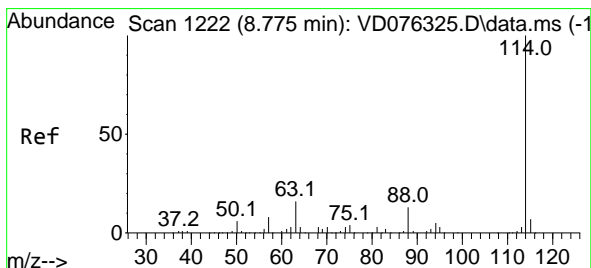
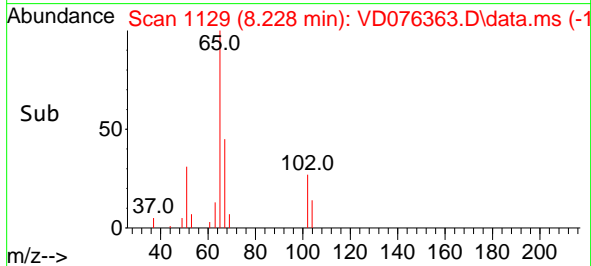
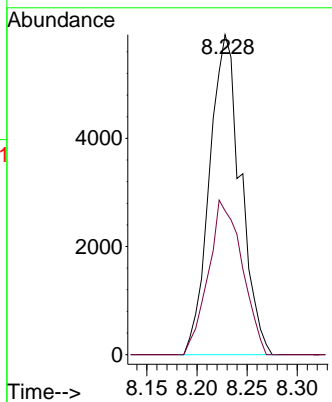


#33  
 1,2-Dichloroethane-d4  
 Concen: 157.839 ug/l  
 RT: 8.228 min Scan# 1129  
 Delta R.T. -0.000 min  
 Lab File: VD076363.D  
 Acq: 07 Jun 2023 19:49

Instrument : MSVOA\_D  
 ClientSampleId : SB32ARE

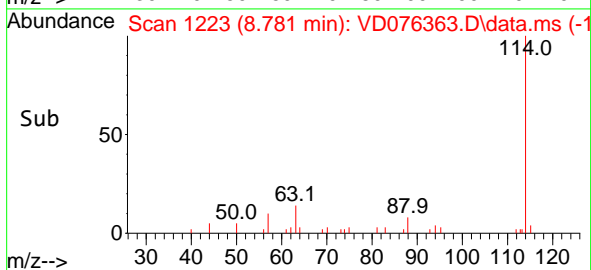
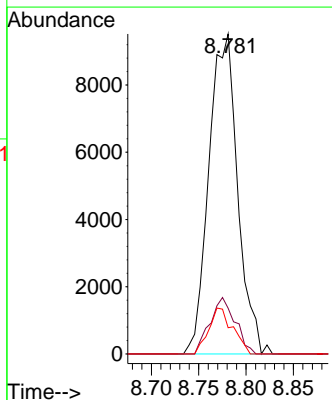
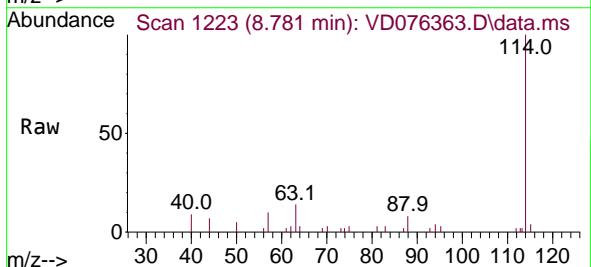


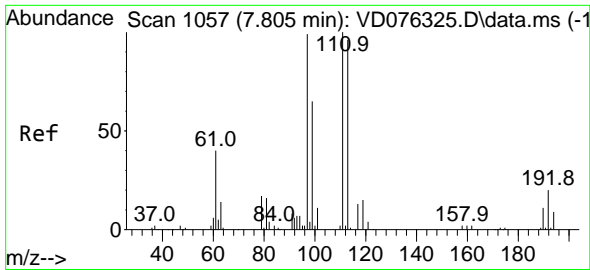
Tgt Ion: 65 Resp: 12779  
 Ion Ratio Lower Upper  
 65 100  
 67 52.2 0.0 115.0



#34  
 1,4-Difluorobenzene  
 Concen: 50.000 ug/l  
 RT: 8.781 min Scan# 1223  
 Delta R.T. 0.006 min  
 Lab File: VD076363.D  
 Acq: 07 Jun 2023 19:49

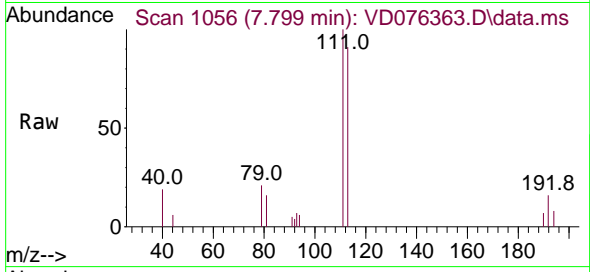
Tgt Ion: 114 Resp: 20110  
 Ion Ratio Lower Upper  
 114 100  
 63 14.3 0.0 33.4  
 88 8.2 0.0 26.2



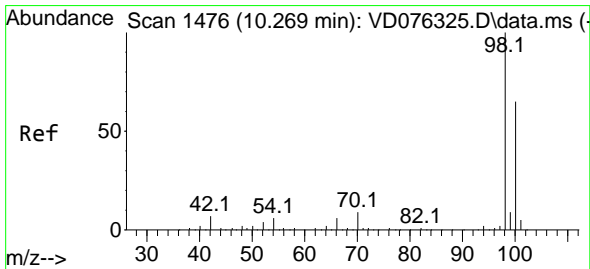
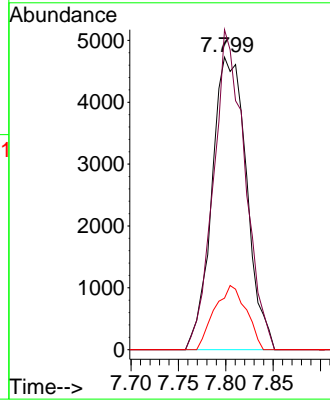
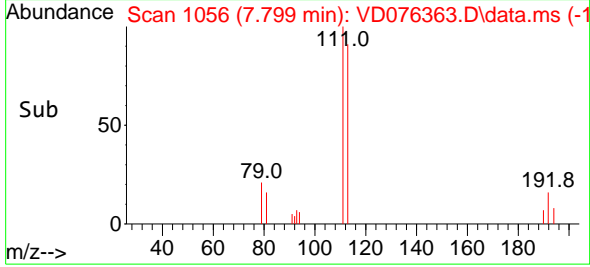


#35  
 Dibromofluoromethane  
 Concen: 94.231 ug/l  
 RT: 7.799 min Scan# 1056  
 Delta R.T. -0.006 min  
 Lab File: VD076363.D  
 Acq: 07 Jun 2023 19:49

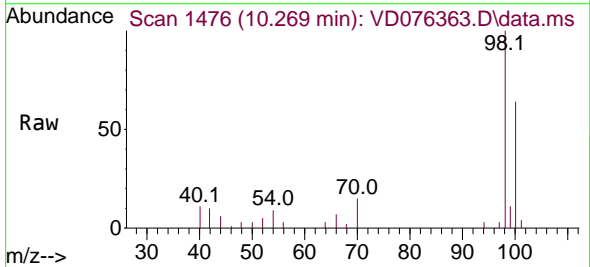
Instrument : MSVOA\_D  
 ClientSampleId : SB32ARE



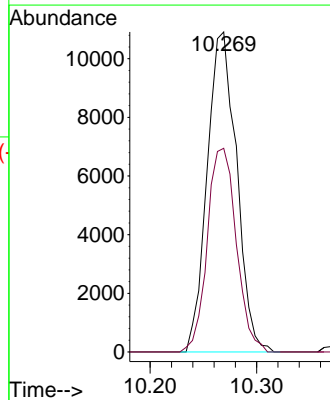
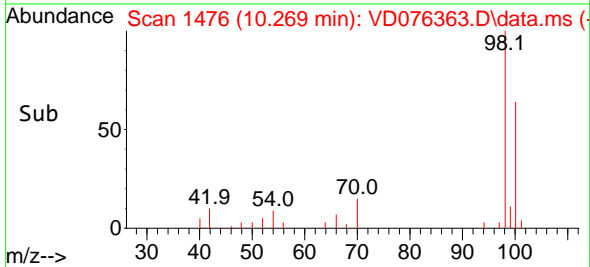
Tgt Ion:113 Resp: 12032  
 Ion Ratio Lower Upper  
 113 100  
 111 99.4 84.7 127.1  
 192 20.1 16.8 25.2

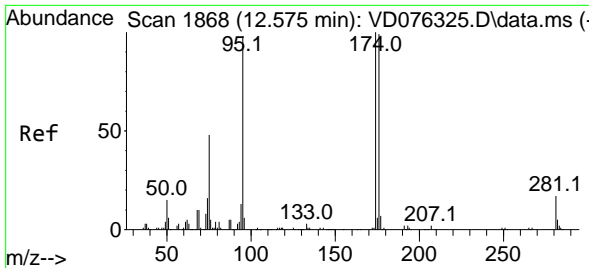


#50  
 Toluene-d8  
 Concen: 41.202 ug/l  
 RT: 10.269 min Scan# 1476  
 Delta R.T. -0.000 min  
 Lab File: VD076363.D  
 Acq: 07 Jun 2023 19:49



Tgt Ion: 98 Resp: 20946  
 Ion Ratio Lower Upper  
 98 100  
 100 62.8 50.3 75.5

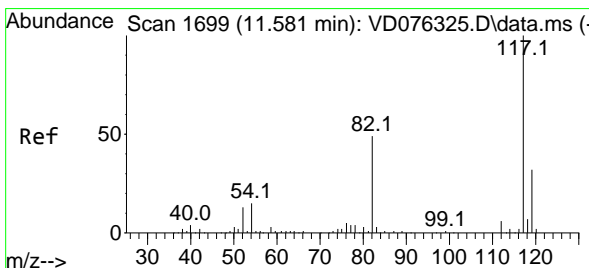
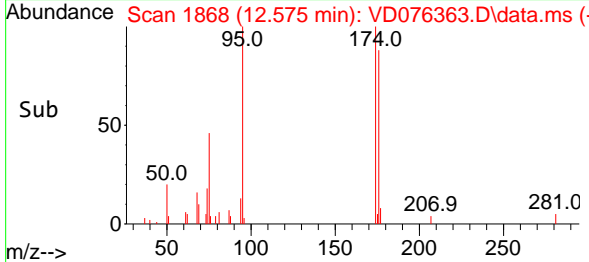
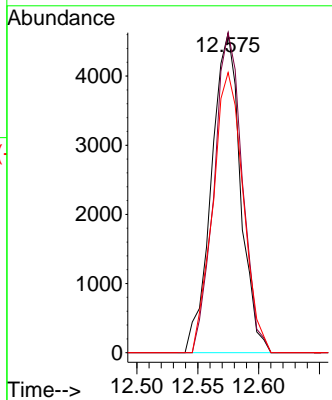
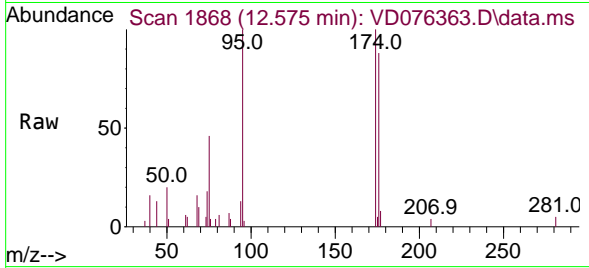




#62  
 4-Bromofluorobenzene  
 Concen: 57.107 ug/l  
 RT: 12.575 min Scan# 1868  
 Delta R.T. -0.000 min  
 Lab File: VD076363.D  
 Acq: 07 Jun 2023 19:49

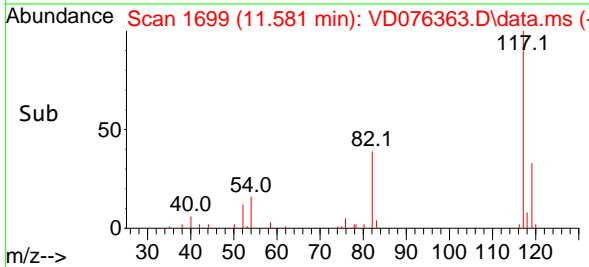
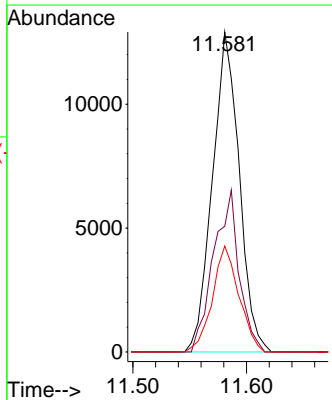
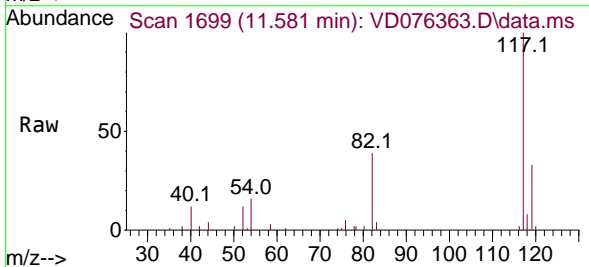
Instrument : MSVOA\_D  
 ClientSampleId : SB32ARE

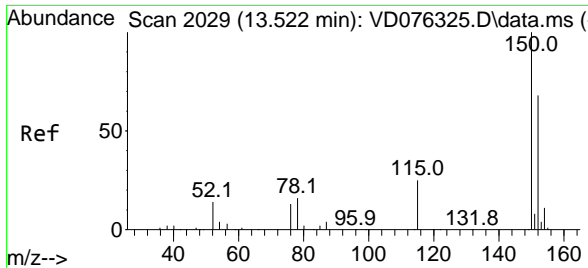
Tgt Ion	Resp	Lower	Upper
95	7683	100	
174	97.2	0.0	201.8
176	91.1	0.0	191.8



#63  
 Chlorobenzene-d5  
 Concen: 50.000 ug/l  
 RT: 11.581 min Scan# 1699  
 Delta R.T. -0.000 min  
 Lab File: VD076363.D  
 Acq: 07 Jun 2023 19:49

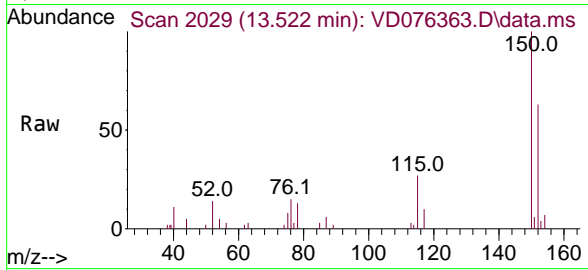
Tgt Ion	Resp	Lower	Upper
117	21130	100	
82	39.3	38.3	57.5
119	33.1	25.0	37.4





#72  
 1,4-Dichlorobenzene-d4  
 Concen: 50.000 ug/l  
 RT: 13.522 min Scan# 20  
 Delta R.T. -0.000 min  
 Lab File: VD076363.D  
 Acq: 07 Jun 2023 19:49

Instrument :  
 MSVOA\_D  
 ClientSampleId :  
 SB32ARE



Tgt Ion:152 Resp: 10428

Ion	Ratio	Lower	Upper
152	100		
115	46.7	27.1	81.3
150	140.5	0.0	353.6

