

Data Path : Z:\voasrv\HPCHEM1\MSVOA_D\Data\VD062822\
 Data File : VD073747.D
 Acq On : 28 Jun 2022 13:02
 Operator : VA/SY
 Sample : N3455-13
 Misc : 5.54G/5.00ml/MSVOA_D/SOIL
 ALS Vial : 8 Sample Multiplier: 1

Instrument :
 MSVOA_D
 ClientSampleId :
 SP-EXC-2-3-GR

Quant Time: Jun 28 16:30:12 2022
 Quant Method : Z:\voasrv\HPCHEM1\MSVOA_D\Method\82D062722S.M
 Quant Title : SW846 8260
 QLast Update : Mon Jun 27 16:20:04 2022
 Response via : Initial Calibration

Compound	R.T.	QIon	Response	Conc	Units	Dev(Min)

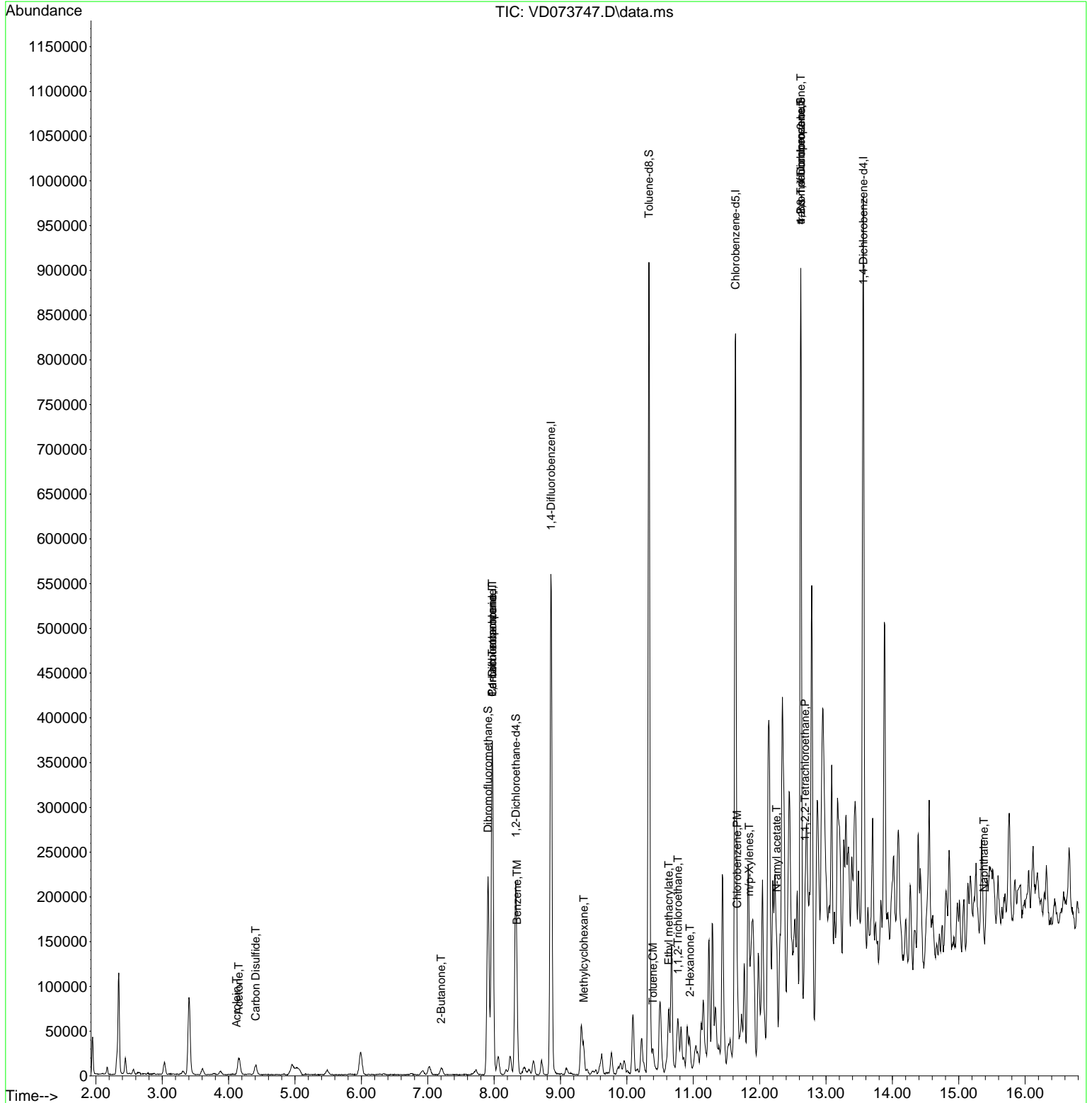
Internal Standards						
1) Pentafluorobenzene	7.973	168	265660	50.000	ug/l	0.00
34) 1,4-Difluorobenzene	8.856	114	482646	50.000	ug/l	0.00
63) Chlorobenzene-d5	11.638	117	470623	50.000	ug/l	0.00
72) 1,4-Dichlorobenzene-d4	13.561	152	239845	50.000	ug/l	0.00
System Monitoring Compounds						
33) 1,2-Dichloroethane-d4	8.326	65	166603	79.282	ug/l	0.00
Spiked Amount	50.000	Range	50 - 163	Recovery	=	158.560%
35) Dibromofluoromethane	7.909	113	154781	55.573	ug/l	0.00
Spiked Amount	50.000	Range	54 - 147	Recovery	=	111.140%
50) Toluene-d8	10.332	98	597762	63.292	ug/l	0.00
Spiked Amount	50.000	Range	49 - 140	Recovery	=	126.580%
62) 4-Bromofluorobenzene	12.620	95	242315	62.302	ug/l	0.00
Spiked Amount	50.000	Range	25 - 144	Recovery	=	124.600%
Target Compounds						
						Qvalue
2) Dichlorodifluoromethane	1.991	85	401	Below Cal		92
4) Vinyl Chloride	2.344	62	81	Below Cal	#	40
5) Bromomethane	2.768	94	710	Below Cal	#	58
11) Tert butyl alcohol	5.220	59	205	Below Cal	#	100
13) Acrolein	4.121	56	120	1.461	ug/l #	80
16) Acetone	4.150	43	33367	79.046	ug/l	98
17) Carbon Disulfide	4.409	76	21997	6.427	ug/l #	94
18) Methyl Acetate	4.885	43	74	Below Cal	#	50
20) Methylene Chloride	4.956	84	6656	Below Cal	#	70
25) 2-Butanone	7.203	43	10249	16.309	ug/l #	75
36) 1,1-Dichloropropene	7.973	75	20978	6.047	ug/l #	50
38) Carbon Tetrachloride	7.973	117	27644	6.502	ug/l #	15
39) Methylcyclohexane	9.350	83	20581	5.835	ug/l	90
40) Benzene	8.344	78	42878	4.153	ug/l	96
52) Toluene	10.391	92	9212	1.327	ug/l	96
55) 1,1,2-Trichloroethane	10.767	97	19032	8.112	ug/l #	24
56) Ethyl methacrylate	10.632	69	20785	7.770	ug/l #	80
59) 2-Hexanone	10.950	43	12899	11.629	ug/l #	28
65) Chlorobenzene	11.661	112	11994	1.439	ug/l	92
68) m/p-Xylenes	11.844	106	8971	1.639	ug/l	78
74) N-amyl acetate	12.255	43	31524	9.923	ug/l #	41
75) 1,1,2,2-Tetrachloroethane	12.685	83	15904	5.475	ug/l #	26
76) 1,2,3-Trichloropropane	12.620	75	116274	64.798	ug/l #	1
81) trans-1,4-Dichloro-2-b...	12.620	75	116274	131.979	ug/l #	13
95) Naphthalene	15.379	128	7295	1.017	ug/l #	72

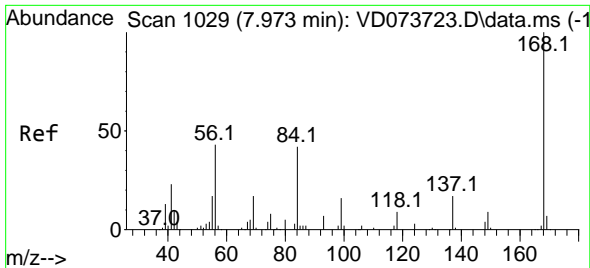
(#) = qualifier out of range (m) = manual integration (+) = signals summed

Data Path : Z:\voasrv\HPCHEM1\MSVOA_D\Data\VD062822\
Data File : VD073747.D
Acq On : 28 Jun 2022 13:02
Operator : VA/SY
Sample : N3455-13
Misc : 5.54G/5.00ml/MSVOA_D/SOIL
ALS Vial : 8 Sample Multiplier: 1

Instrument :
MSVOA_D
ClientSampleId :
SP-EXC-2-3-GR

Quant Time: Jun 28 16:30:12 2022
Quant Method : Z:\voasrv\HPCHEM1\MSVOA_D\Method\82D062722S.M
Quant Title : SW846 8260
QLast Update : Mon Jun 27 16:20:04 2022
Response via : Initial Calibration

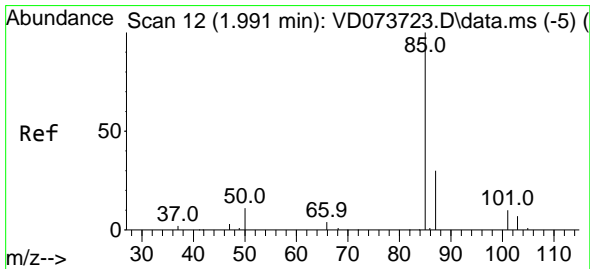
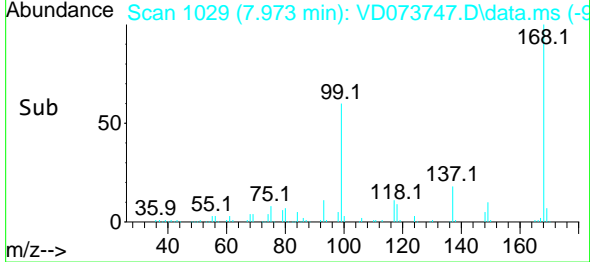
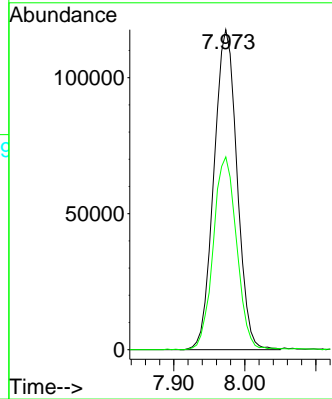
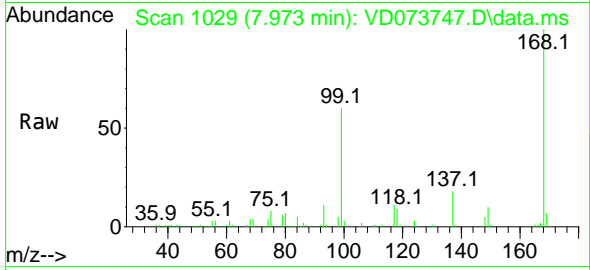




#1
 Pentafluorobenzene
 Concen: 50.000 ug/l
 RT: 7.973 min Scan# 10
 Delta R.T. 0.000 min
 Lab File: VD073747.D
 Acq: 28 Jun 2022 13:02

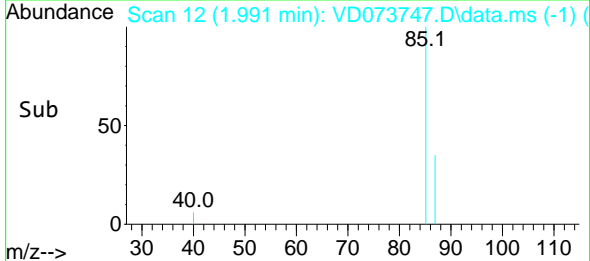
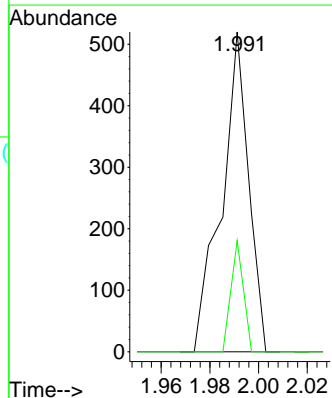
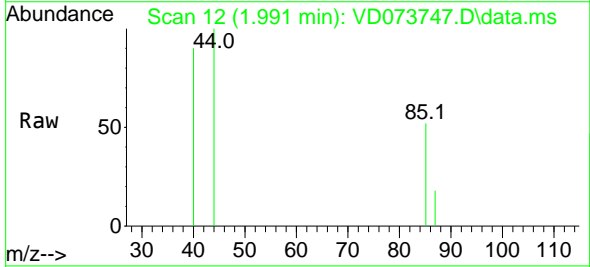
Instrument :
 MSVOA_D
 ClientSampleId :
 SP-EXC-2-3-GR

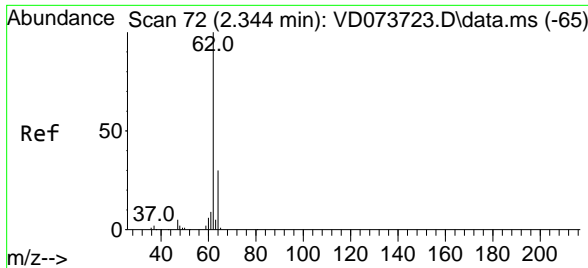
Tgt Ion:168 Resp: 265660
 Ion Ratio Lower Upper
 168 100
 99 60.2 46.4 69.6



#2
 Dichlorodifluoromethane
 Concen: Below Cal
 RT: 1.991 min Scan# 12
 Delta R.T. 0.000 min
 Lab File: VD073747.D
 Acq: 28 Jun 2022 13:02

Tgt Ion: 85 Resp: 401
 Ion Ratio Lower Upper
 85 100
 87 34.8 15.2 45.5

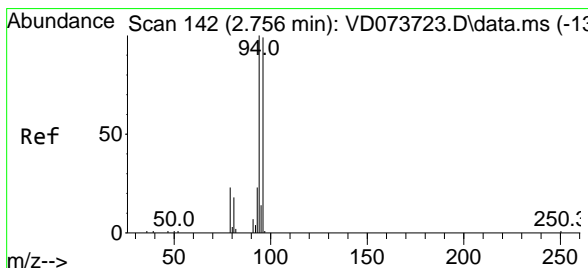
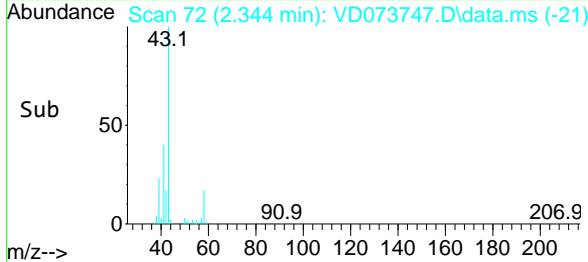
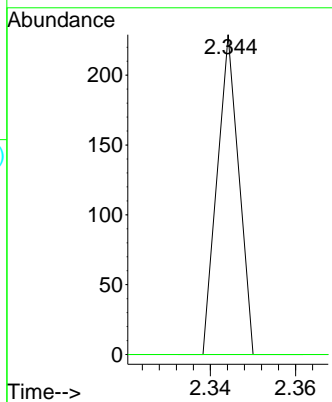
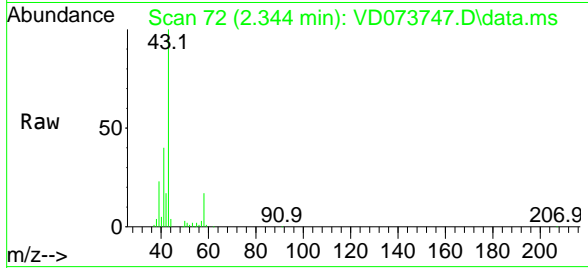




#4
 Vinyl Chloride
 Concen: Below Cal
 RT: 2.344 min Scan# 71
 Delta R.T. 0.000 min
 Lab File: VD073747.D
 Acq: 28 Jun 2022 13:02

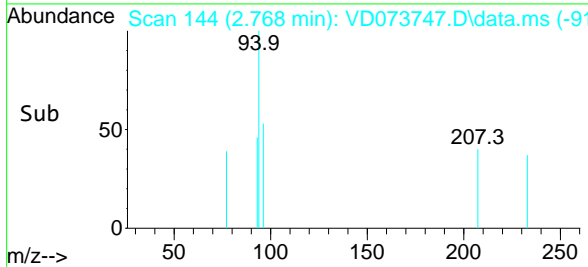
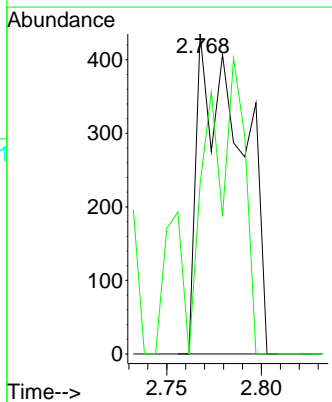
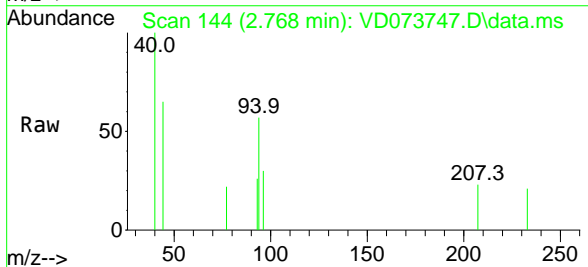
Instrument : MSVOA_D
 ClientSampleId : SP-EXC-2-3-GR

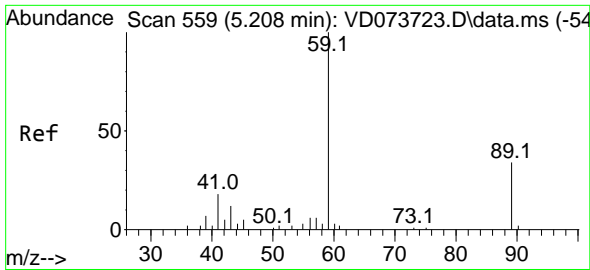
Tgt Ion: 62 Resp: 81
 Ion Ratio Lower Upper
 62 100
 64 0.0 27.8 41.6#



#5
 Bromomethane
 Concen: Below Cal
 RT: 2.768 min Scan# 144
 Delta R.T. 0.012 min
 Lab File: VD073747.D
 Acq: 28 Jun 2022 13:02

Tgt Ion: 94 Resp: 710
 Ion Ratio Lower Upper
 94 100
 96 53.1 75.1 112.7#

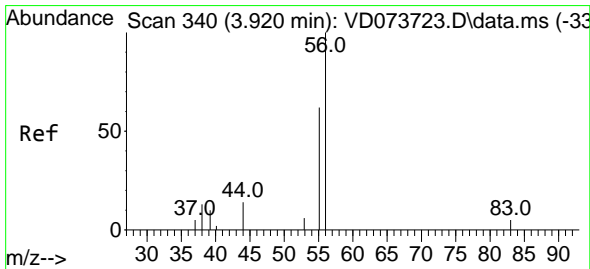
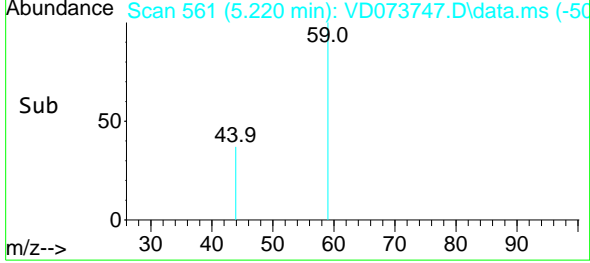
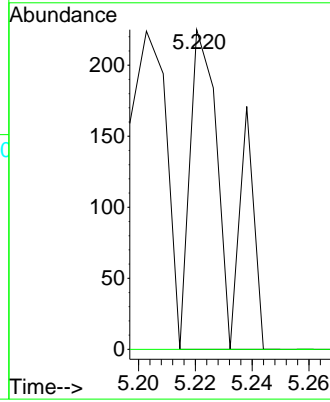
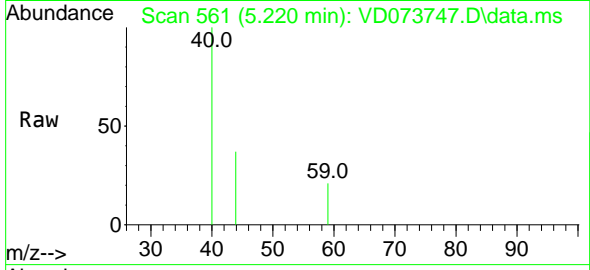




#11
 Tert butyl alcohol
 Concen: Below Cal
 RT: 5.220 min Scan# 50
 Delta R.T. 0.012 min
 Lab File: VD073747.D
 Acq: 28 Jun 2022 13:02

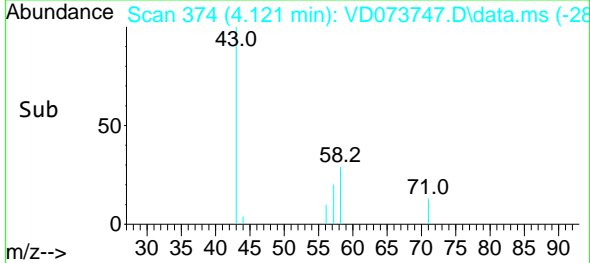
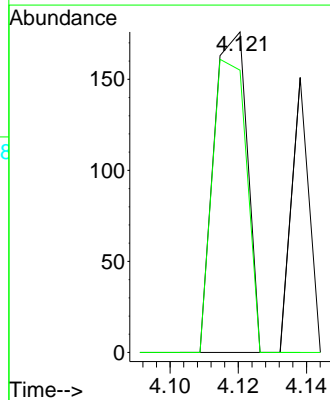
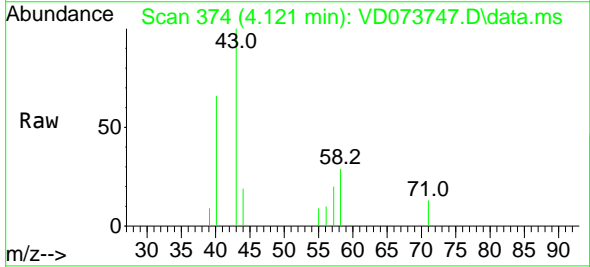
Instrument : MSVOA_D
 ClientSampleId : SP-EXC-2-3-GR

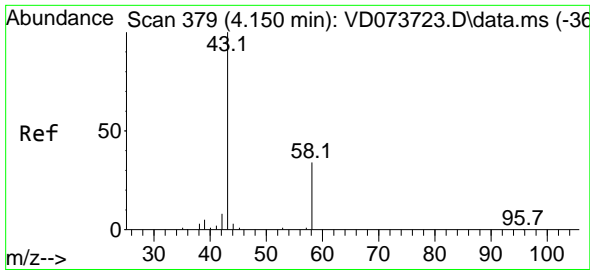
Tgt Ion: 59 Resp: 205
 Ion Ratio Lower Upper
 59 100
 57 0.0 0.0 0.0



#13
 Acrolein
 Concen: 1.461 ug/l
 RT: 4.121 min Scan# 374
 Delta R.T. 0.201 min
 Lab File: VD073747.D
 Acq: 28 Jun 2022 13:02

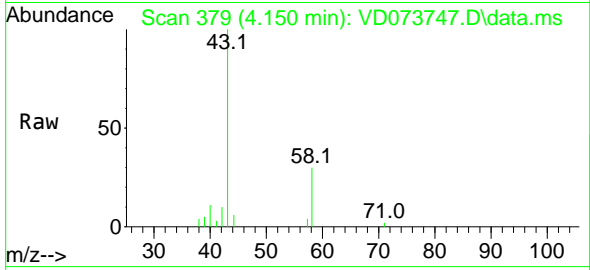
Tgt Ion: 56 Resp: 120
 Ion Ratio Lower Upper
 56 100
 55 92.5 60.3 90.5#



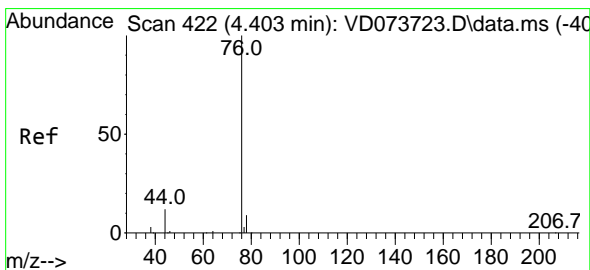
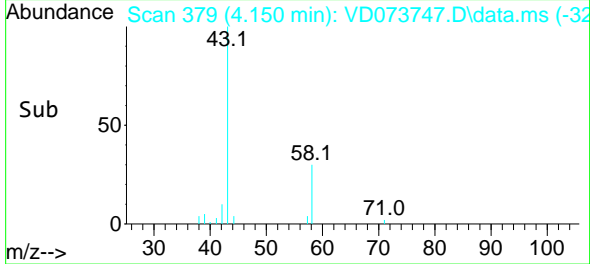
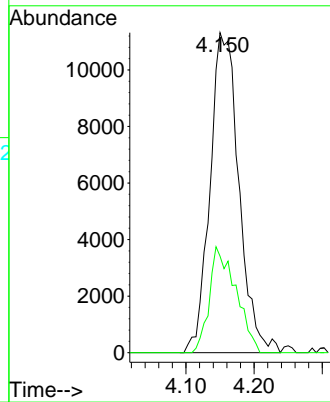


#16
 Acetone
 Concen: 79.046 ug/l
 RT: 4.150 min Scan# 31
 Delta R.T. -0.000 min
 Lab File: VD073747.D
 Acq: 28 Jun 2022 13:02

Instrument : MSVOA_D
 ClientSampleId : SP-EXC-2-3-GR

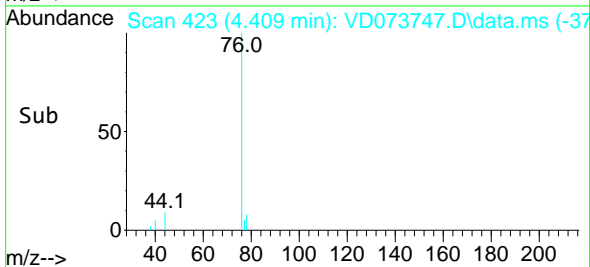
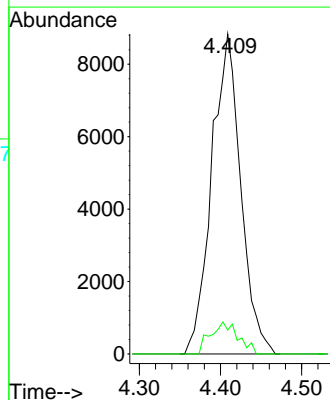
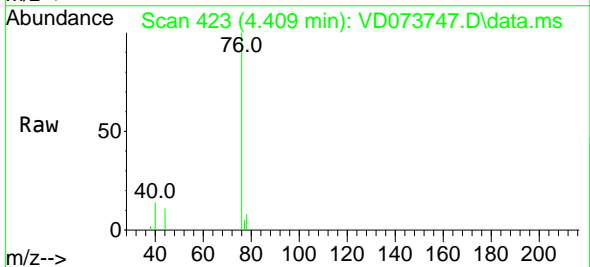


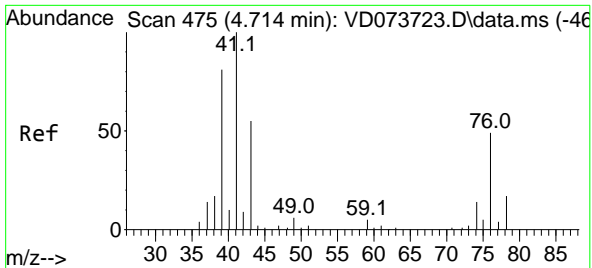
Tgt Ion: 43 Resp: 33367
 Ion Ratio Lower Upper
 43 100
 58 30.2 25.2 37.8



#17
 Carbon Disulfide
 Concen: 6.427 ug/l
 RT: 4.409 min Scan# 423
 Delta R.T. 0.006 min
 Lab File: VD073747.D
 Acq: 28 Jun 2022 13:02

Tgt Ion: 76 Resp: 21997
 Ion Ratio Lower Upper
 76 100
 78 7.5 7.7 11.5#

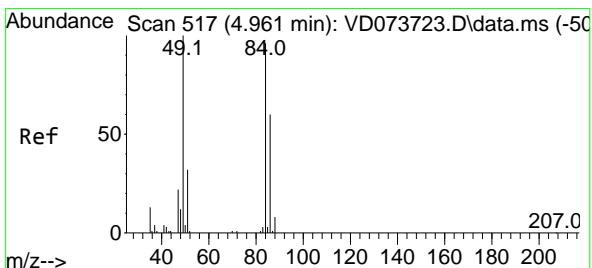
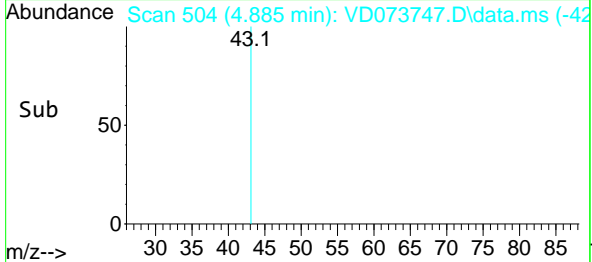
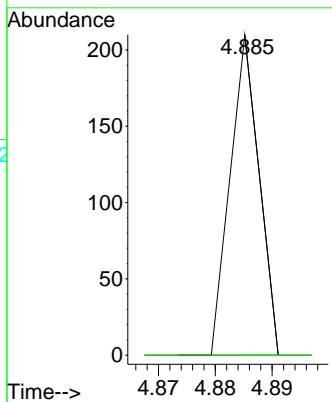
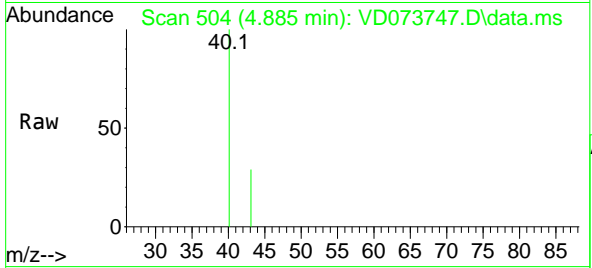




#18
 Methyl Acetate
 Concen: Below Cal
 RT: 4.885 min Scan# 504
 Delta R.T. 0.171 min
 Lab File: VD073747.D
 Acq: 28 Jun 2022 13:02

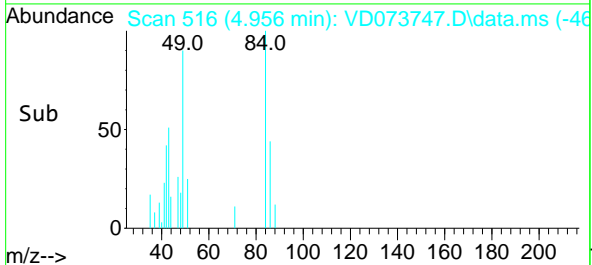
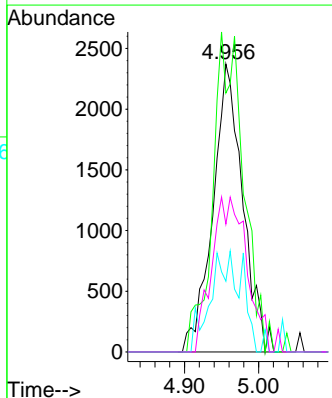
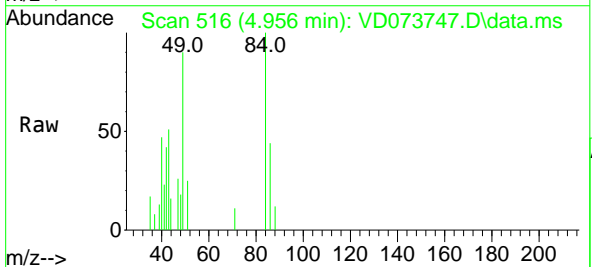
Instrument : MSVOA_D
 ClientSampleId : SP-EXC-2-3-GR

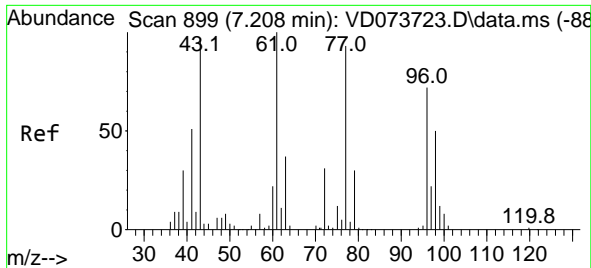
Tgt Ion: 43 Resp: 74
 Ion Ratio Lower Upper
 43 100
 74 0.0 20.2 30.4#



#20
 Methylene Chloride
 Concen: Below Cal
 RT: 4.956 min Scan# 516
 Delta R.T. -0.005 min
 Lab File: VD073747.D
 Acq: 28 Jun 2022 13:02

Tgt Ion: 84 Resp: 6656
 Ion Ratio Lower Upper
 84 100
 49 89.9 100.6 150.8#
 51 24.5 29.8 44.6#
 86 44.4 56.1 84.1#

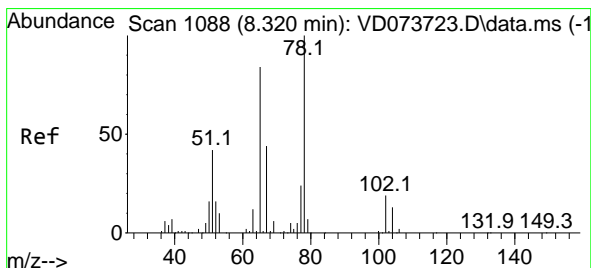
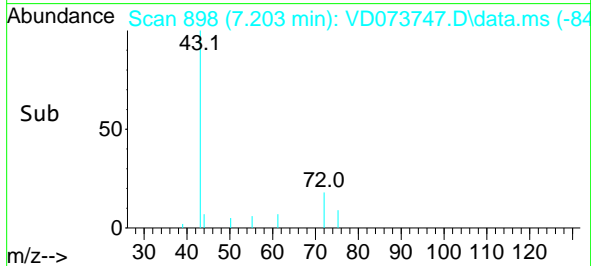
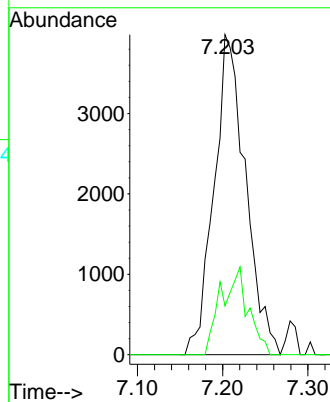
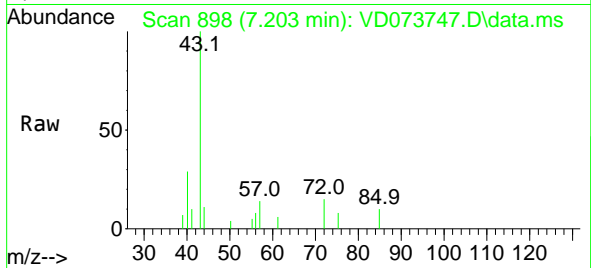




#25
 2-Butanone
 Concen: 16.309 ug/l
 RT: 7.203 min Scan# 898
 Delta R.T. -0.005 min
 Lab File: VD073747.D
 Acq: 28 Jun 2022 13:02

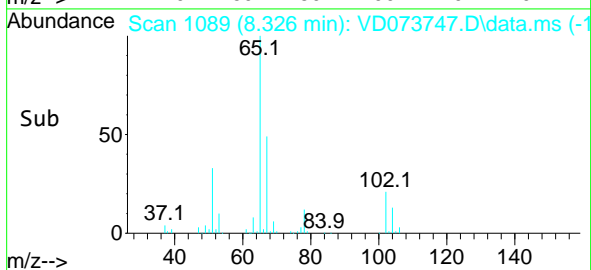
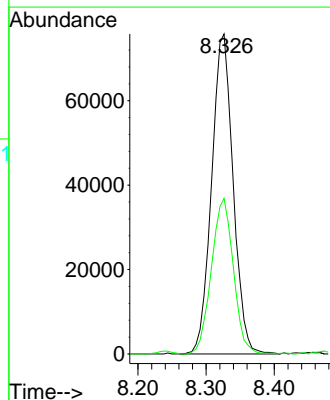
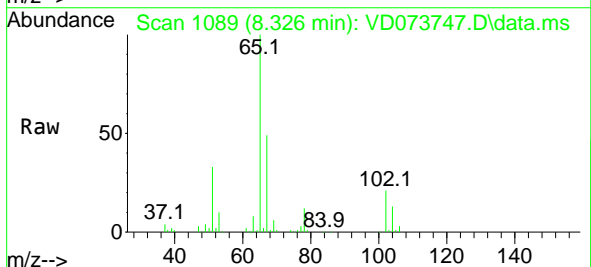
Instrument : MSVOA_D
 ClientSampleId : SP-EXC-2-3-GR

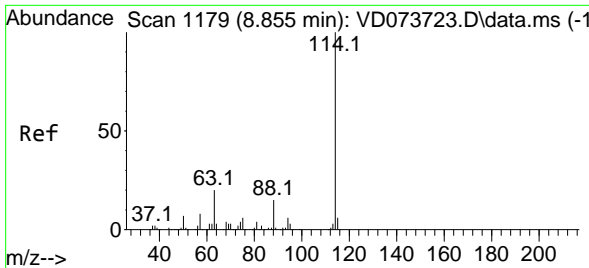
Tgt Ion: 43 Resp: 10249
 Ion Ratio Lower Upper
 43 100
 72 15.2 22.6 33.8#



#33
 1,2-Dichloroethane-d4
 Concen: 79.282 ug/l
 RT: 8.326 min Scan# 1089
 Delta R.T. 0.006 min
 Lab File: VD073747.D
 Acq: 28 Jun 2022 13:02

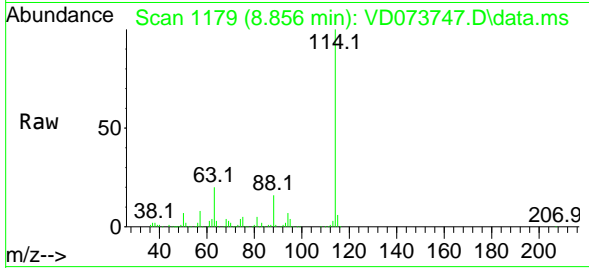
Tgt Ion: 65 Resp: 166603
 Ion Ratio Lower Upper
 65 100
 67 49.6 0.0 107.2



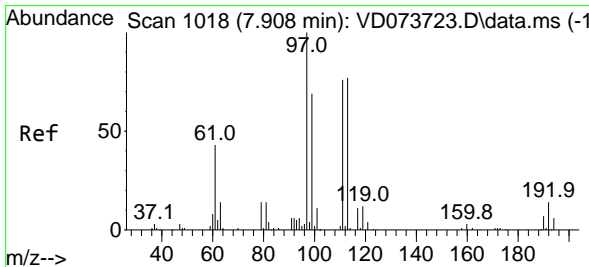
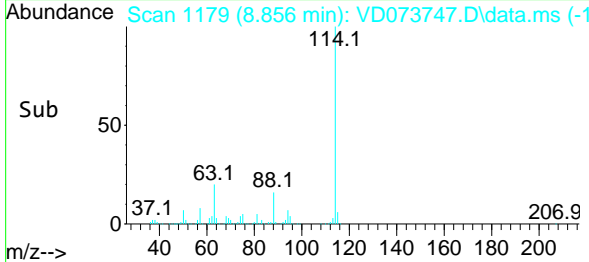
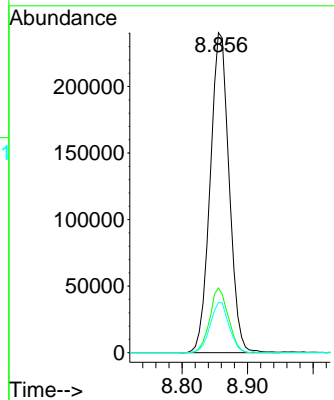


#34
 1,4-Difluorobenzene
 Concen: 50.000 ug/l
 RT: 8.856 min Scan# 1119
 Delta R.T. 0.001 min
 Lab File: VD073747.D
 Acq: 28 Jun 2022 13:02

Instrument : MSVOA_D
 ClientSampleId : SP-EXC-2-3-GR

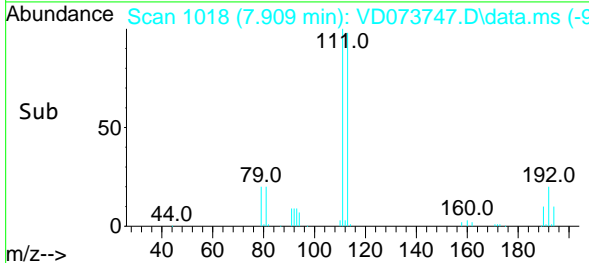
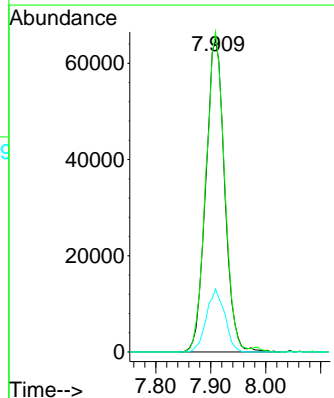
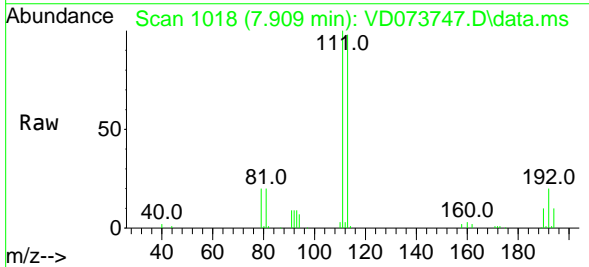


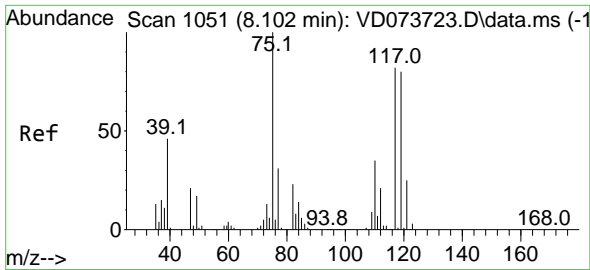
Tgt Ion:114 Resp: 482646
 Ion Ratio Lower Upper
 114 100
 63 20.2 0.0 39.2
 88 15.7 0.0 29.4



#35
 Dibromofluoromethane
 Concen: 55.573 ug/l
 RT: 7.909 min Scan# 1018
 Delta R.T. 0.001 min
 Lab File: VD073747.D
 Acq: 28 Jun 2022 13:02

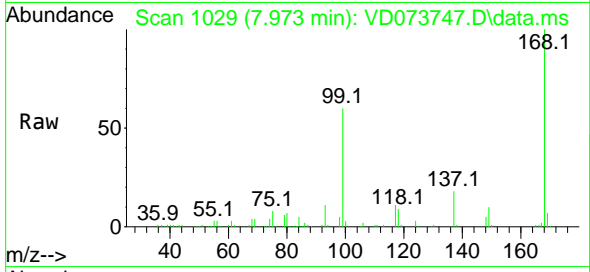
Tgt Ion:113 Resp: 154781
 Ion Ratio Lower Upper
 113 100
 111 100.8 81.8 122.6
 192 19.6 14.8 22.2



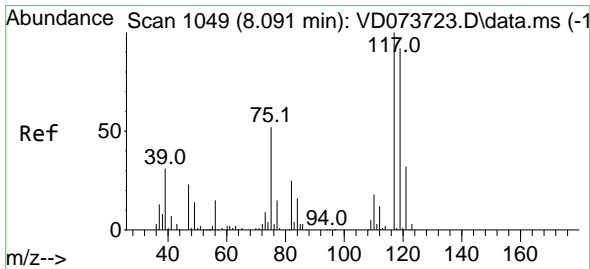
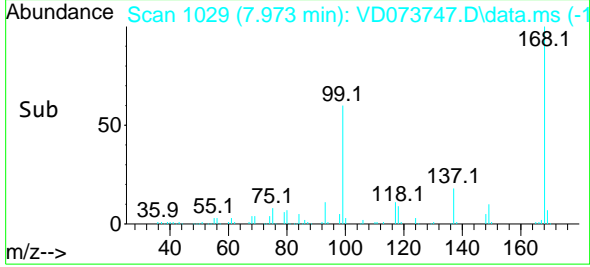
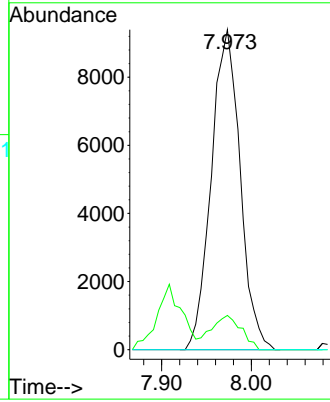


#36
 1,1-Dichloropropene
 Concen: 6.047 ug/l
 RT: 7.973 min Scan# 1029
 Delta R.T. -0.129 min
 Lab File: VD073747.D
 Acq: 28 Jun 2022 13:02

Instrument : MSVOA_D
 ClientSampleId : SP-EXC-2-3-GR

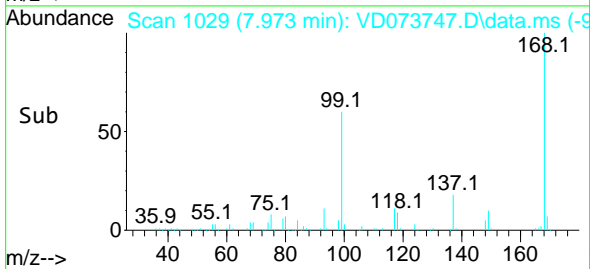
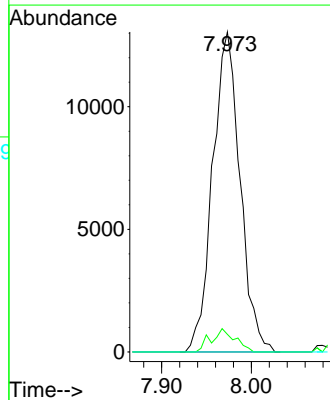
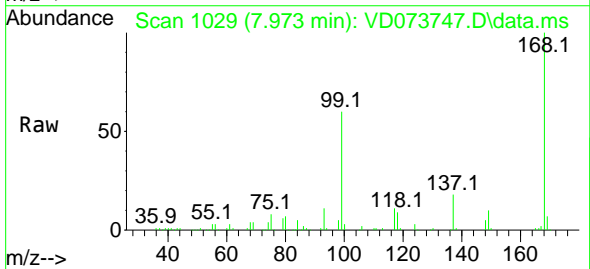


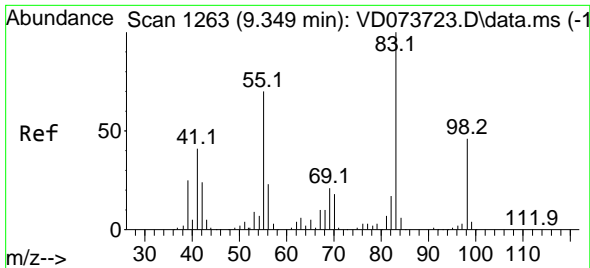
Tgt Ion: 75 Resp: 20978
 Ion Ratio Lower Upper
 75 100
 110 10.8 18.0 54.0#
 77 0.0 25.6 38.4#



#38
 Carbon Tetrachloride
 Concen: 6.502 ug/l
 RT: 7.973 min Scan# 1029
 Delta R.T. -0.118 min
 Lab File: VD073747.D
 Acq: 28 Jun 2022 13:02

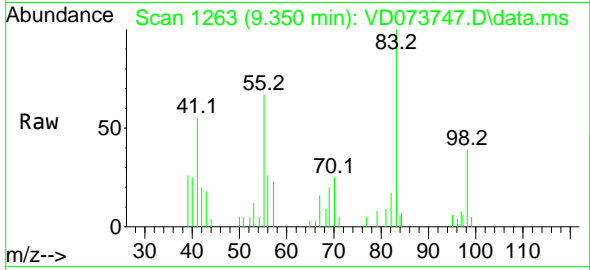
Tgt Ion: 117 Resp: 27644
 Ion Ratio Lower Upper
 117 100
 119 5.5 79.2 118.8#
 121 0.0 23.8 35.8#





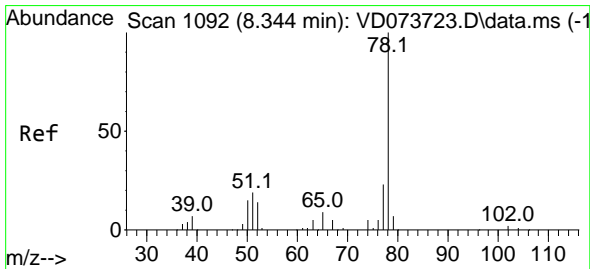
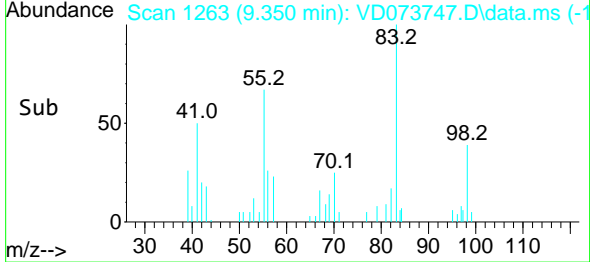
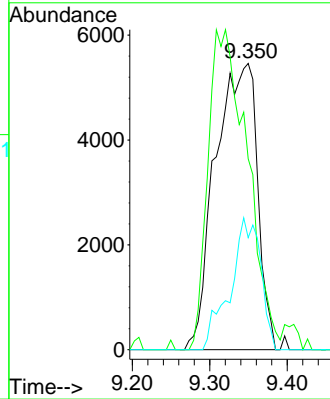
#39
 Methylcyclohexane
 Concen: 5.835 ug/l
 RT: 9.350 min Scan# 11
 Delta R.T. 0.001 min
 Lab File: VD073747.D
 Acq: 28 Jun 2022 13:02

Instrument :
 MSVOA_D
 ClientSampleId :
 SP-EXC-2-3-GR



Tgt Ion: 83 Resp: 20581

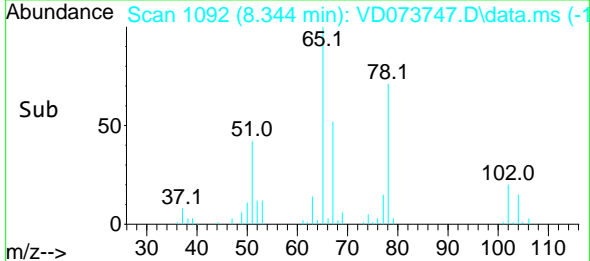
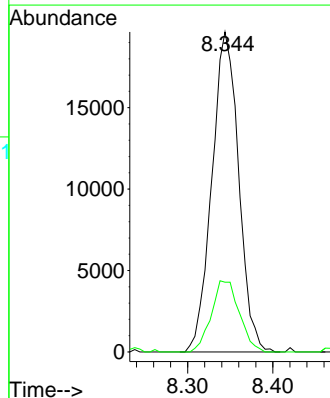
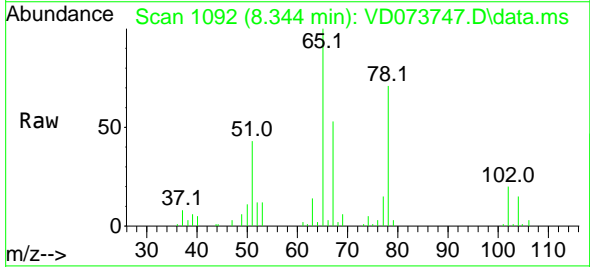
Ion	Ratio	Lower	Upper
83	100		
55	66.7	59.0	88.4
98	39.1	38.3	57.5

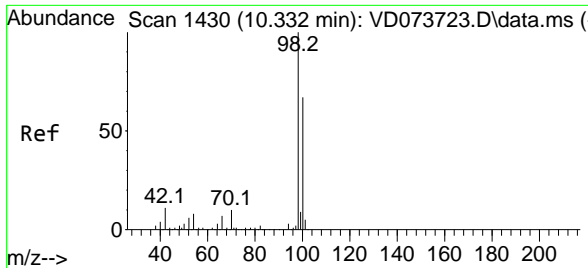


#40
 Benzene
 Concen: 4.153 ug/l
 RT: 8.344 min Scan# 1092
 Delta R.T. -0.000 min
 Lab File: VD073747.D
 Acq: 28 Jun 2022 13:02

Tgt Ion: 78 Resp: 42878

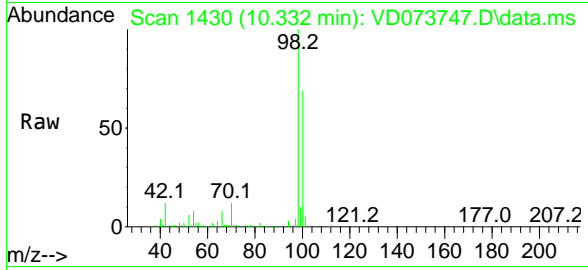
Ion	Ratio	Lower	Upper
78	100		
77	21.8	19.0	28.4



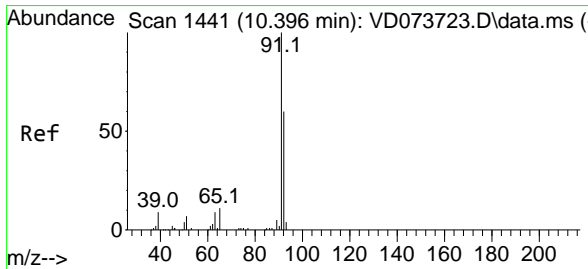
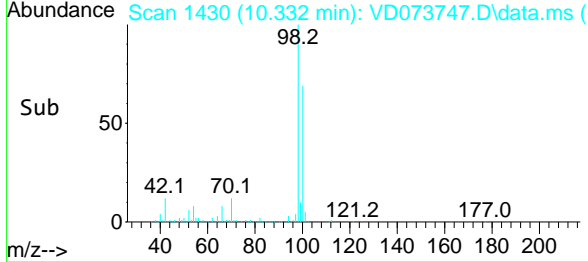
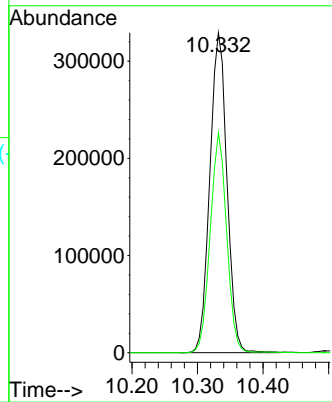


#50
 Toluene-d8
 Concen: 63.292 ug/l
 RT: 10.332 min Scan# 14
 Delta R.T. -0.000 min
 Lab File: VD073747.D
 Acq: 28 Jun 2022 13:02

Instrument : MSVOA_D
 ClientSampleId : SP-EXC-2-3-GR

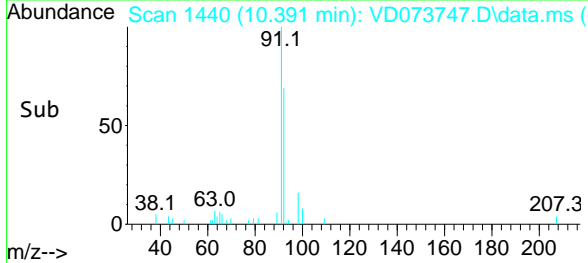
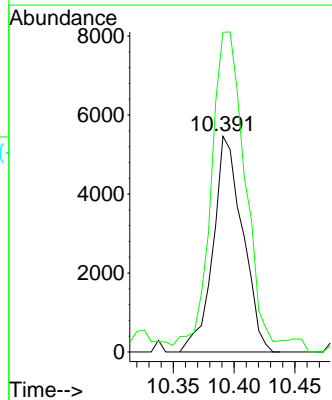
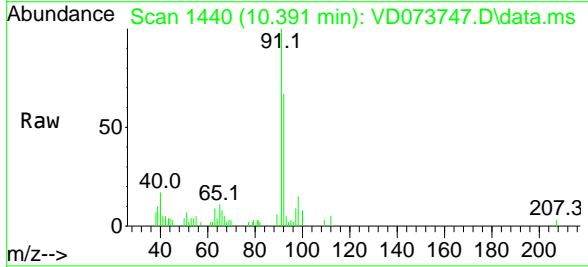


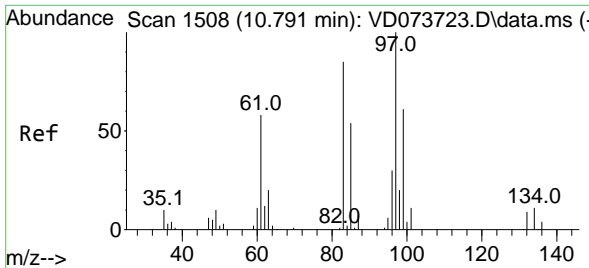
Tgt Ion: 98 Resp: 597762
 Ion Ratio Lower Upper
 98 100
 100 66.2 54.0 81.0



#52
 Toluene
 Concen: 1.327 ug/l
 RT: 10.391 min Scan# 1440
 Delta R.T. -0.005 min
 Lab File: VD073747.D
 Acq: 28 Jun 2022 13:02

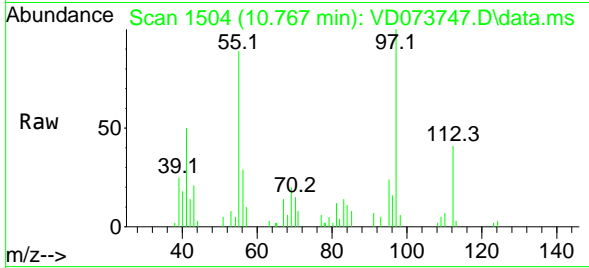
Tgt Ion: 92 Resp: 9212
 Ion Ratio Lower Upper
 92 100
 91 164.7 136.1 204.1





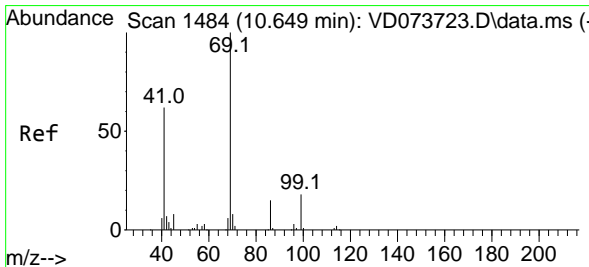
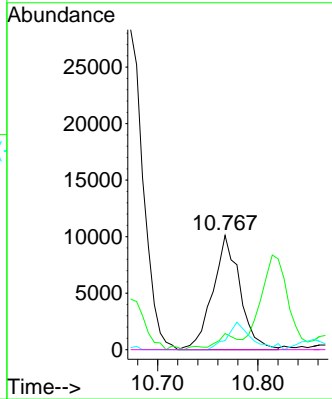
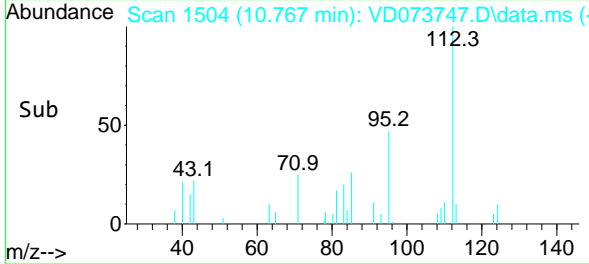
#55
 1,1,2-Trichloroethane
 Concen: 8.112 ug/l
 RT: 10.767 min Scan# 111
 Delta R.T. -0.024 min
 Lab File: VD073747.D
 Acq: 28 Jun 2022 13:02

Instrument : MSVOA_D
 ClientSampleId : SP-EXC-2-3-GR

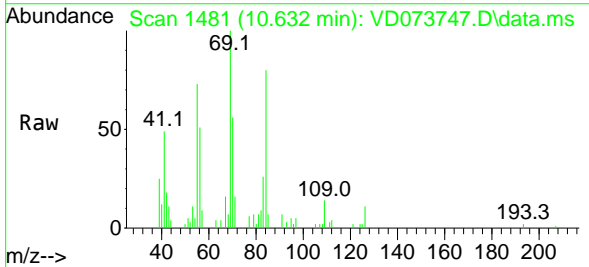


Tgt Ion: 97 Resp: 19032

Ion	Ratio	Lower	Upper
97	100		
83	12.1	67.1	100.7#
85	8.0	44.0	66.0#
99	0.0	51.5	77.3#

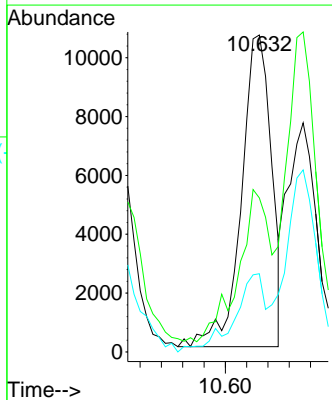
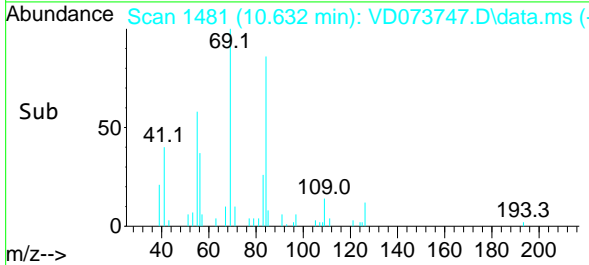


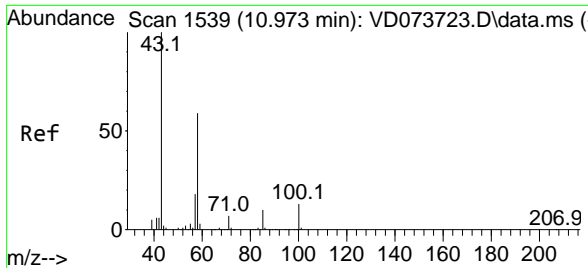
#56
 Ethyl methacrylate
 Concen: 7.770 ug/l
 RT: 10.632 min Scan# 1481
 Delta R.T. -0.017 min
 Lab File: VD073747.D
 Acq: 28 Jun 2022 13:02



Tgt Ion: 69 Resp: 20785

Ion	Ratio	Lower	Upper
69	100		
41	49.0	51.6	77.4#
39	25.0	29.2	43.8#

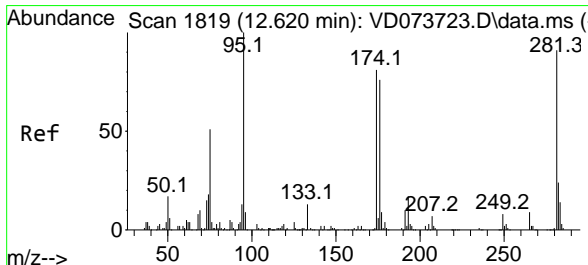
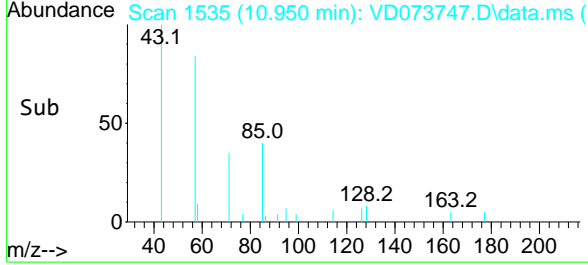
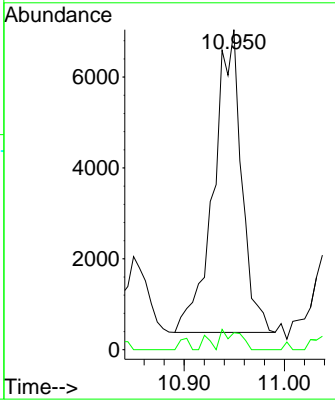
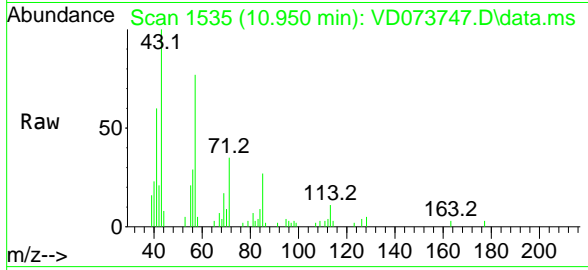




#59
 2-Hexanone
 Concen: 11.629 ug/l
 RT: 10.950 min Scan# 111
 Delta R.T. -0.023 min
 Lab File: VD073747.D
 Acq: 28 Jun 2022 13:02

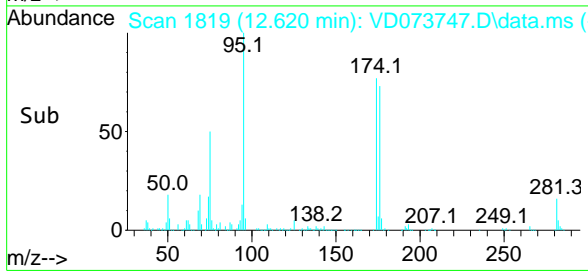
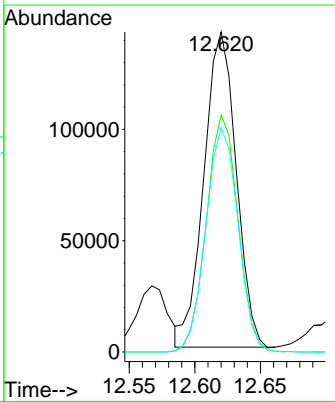
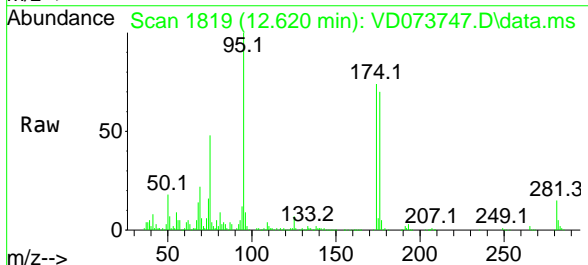
Instrument : MSVOA_D
 ClientSampleId : SP-EXC-2-3-GR

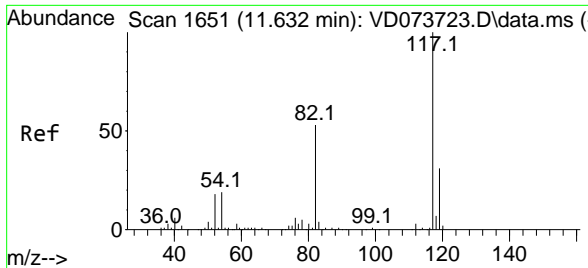
Tgt Ion: 43 Resp: 12899
 Ion Ratio Lower Upper
 43 100
 58 4.4 28.8 86.4#



#62
 4-Bromofluorobenzene
 Concen: 62.302 ug/l
 RT: 12.620 min Scan# 1819
 Delta R.T. 0.000 min
 Lab File: VD073747.D
 Acq: 28 Jun 2022 13:02

Tgt Ion: 95 Resp: 242315
 Ion Ratio Lower Upper
 95 100
 174 73.9 0.0 158.4
 176 71.2 0.0 154.8

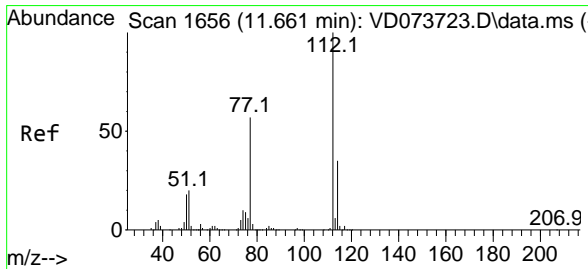
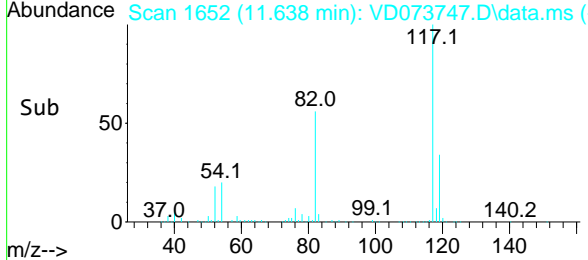
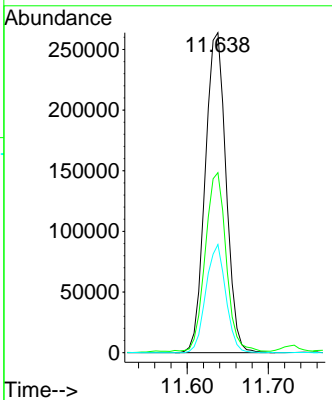
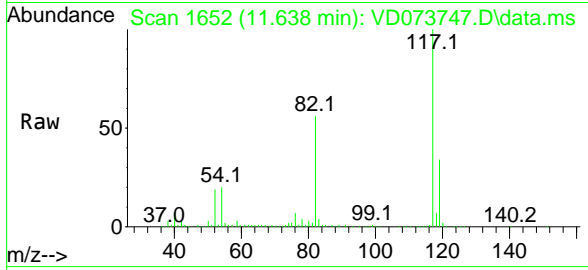




#63
 Chlorobenzene-d5
 Concen: 50.000 ug/l
 RT: 11.638 min Scan# 1652
 Delta R.T. 0.006 min
 Lab File: VD073747.D
 Acq: 28 Jun 2022 13:02

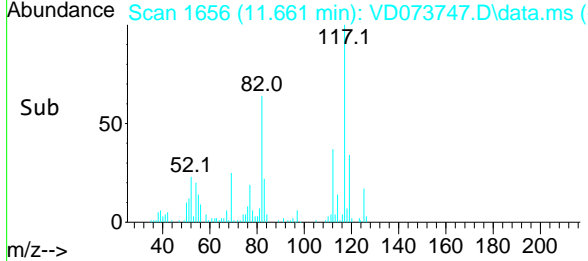
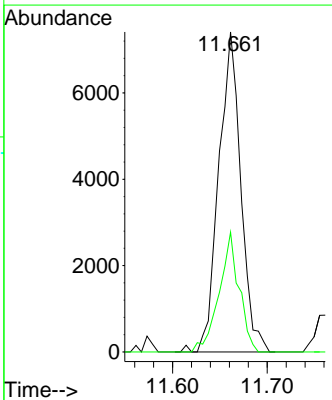
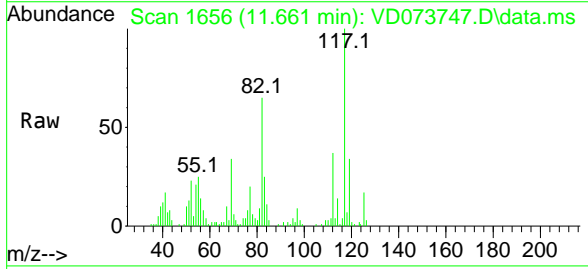
Instrument : MSVOA_D
 ClientSampleId : SP-EXC-2-3-GR

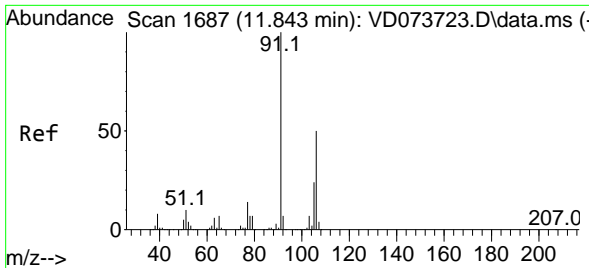
Tgt Ion	Resp	Lower	Upper
117	470623		
82	55.6	41.5	62.3
119	33.8	27.1	40.7



#65
 Chlorobenzene
 Concen: 1.439 ug/l
 RT: 11.661 min Scan# 1656
 Delta R.T. 0.000 min
 Lab File: VD073747.D
 Acq: 28 Jun 2022 13:02

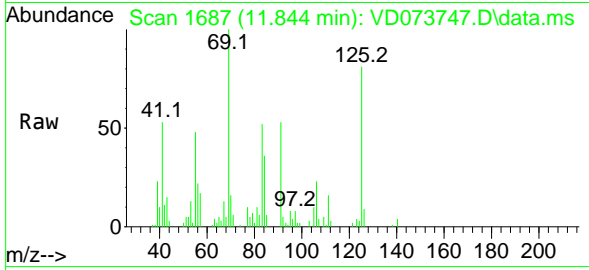
Tgt Ion	Resp	Lower	Upper
112	11994		
114	37.5	26.6	39.8



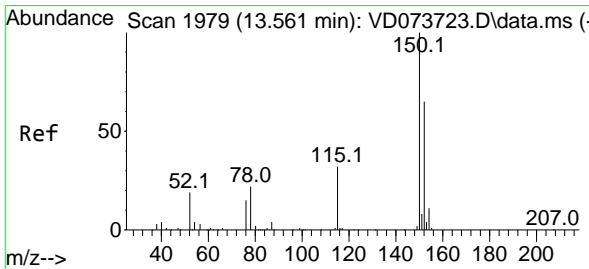
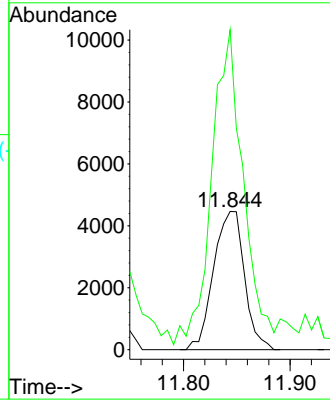
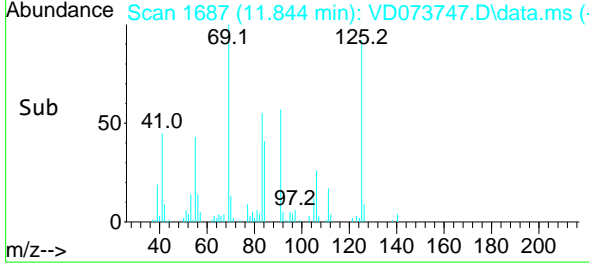


#68
 m/p-Xylenes
 Concen: 1.639 ug/l
 RT: 11.844 min Scan# 11
 Delta R.T. 0.001 min
 Lab File: VD073747.D
 Acq: 28 Jun 2022 13:02

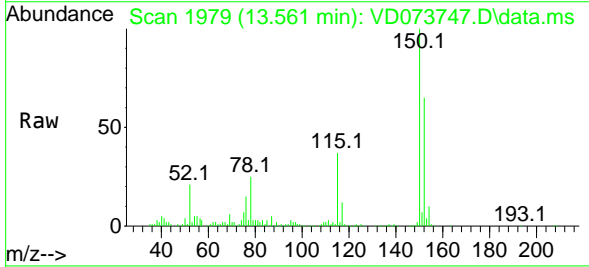
Instrument : MSVOA_D
 ClientSampleId : SP-EXC-2-3-GR



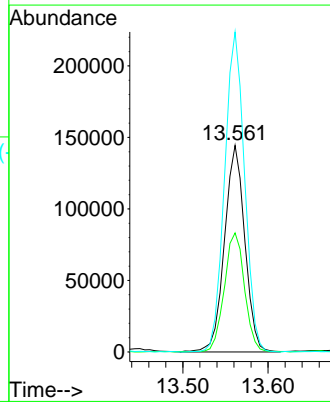
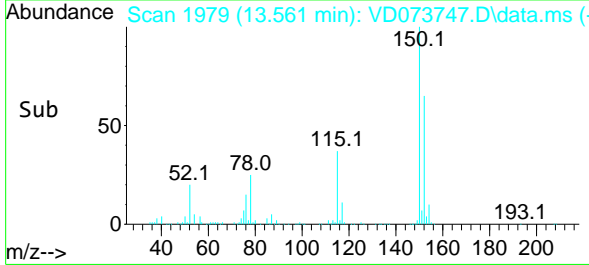
Tgt Ion:106 Resp: 8971
 Ion Ratio Lower Upper
 106 100
 91 235.1 161.4 242.2

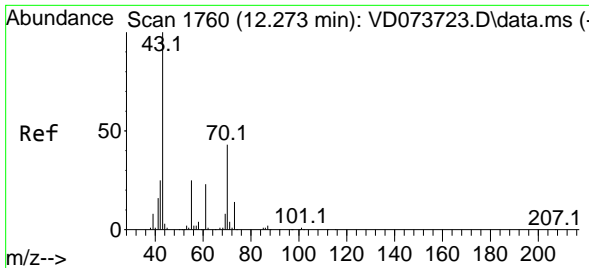


#72
 1,4-Dichlorobenzene-d4
 Concen: 50.000 ug/l
 RT: 13.561 min Scan# 1979
 Delta R.T. 0.000 min
 Lab File: VD073747.D
 Acq: 28 Jun 2022 13:02



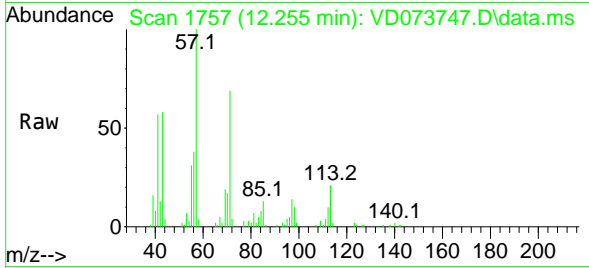
Tgt Ion:152 Resp: 239845
 Ion Ratio Lower Upper
 152 100
 115 57.5 30.6 91.6
 150 152.0 0.0 355.0





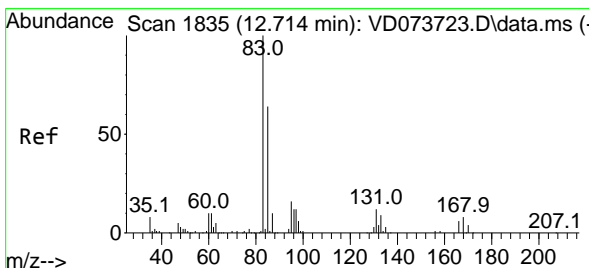
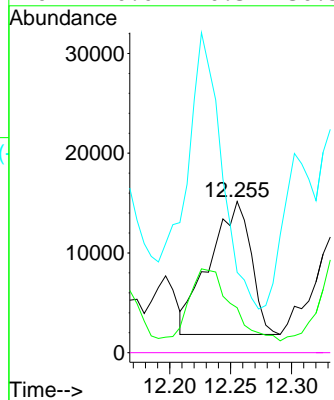
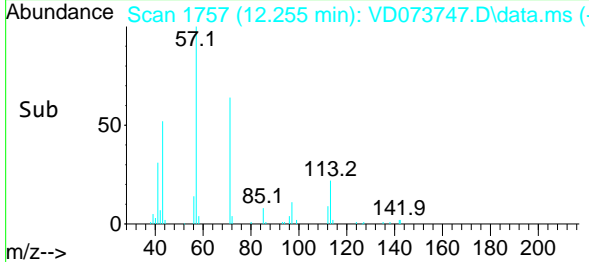
#74
 N-amy1 acetate
 Concen: 9.923 ug/l
 RT: 12.255 min Scan# 11
 Delta R.T. -0.018 min
 Lab File: VD073747.D
 Acq: 28 Jun 2022 13:02

Instrument : MSVOA_D
 ClientSampleId : SP-EXC-2-3-GR

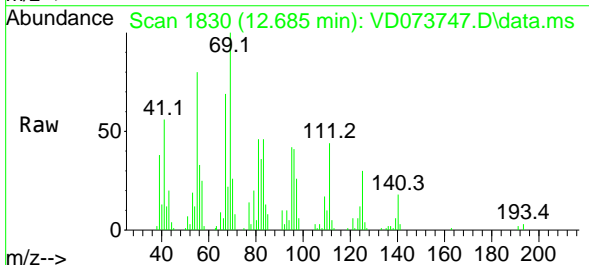


Tgt Ion: 43 Resp: 31524

Ion	Ratio	Lower	Upper
43	100		
70	0.0	35.0	52.6#
55	0.0	21.0	31.4#
61	0.0	20.3	30.5#

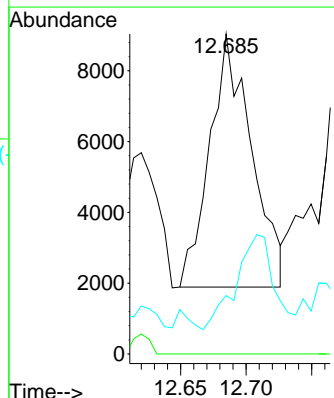
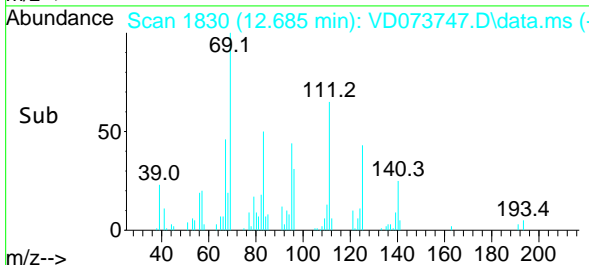


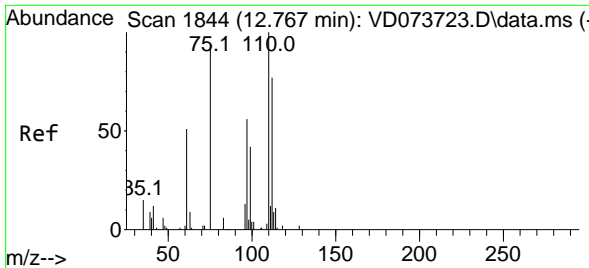
#75
 1,1,2,2-Tetrachloroethane
 Concen: 5.475 ug/l
 RT: 12.685 min Scan# 1830
 Delta R.T. -0.029 min
 Lab File: VD073747.D
 Acq: 28 Jun 2022 13:02



Tgt Ion: 83 Resp: 15904

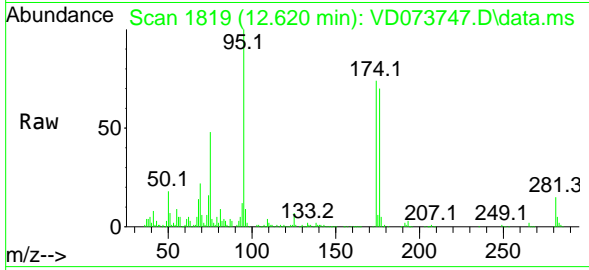
Ion	Ratio	Lower	Upper
83	100		
131	0.0	5.5	16.7#
85	0.0	32.3	96.9#



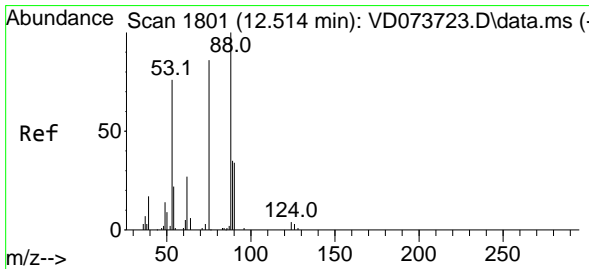
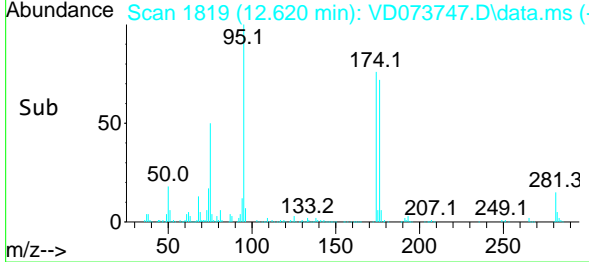
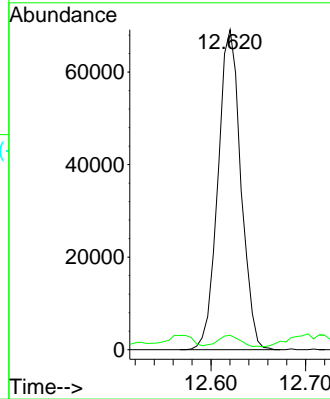


#76
 1,2,3-Trichloropropane
 Concen: 64.798 ug/l
 RT: 12.620 min Scan# 1819
 Delta R.T. -0.147 min
 Lab File: VD073747.D
 Acq: 28 Jun 2022 13:02

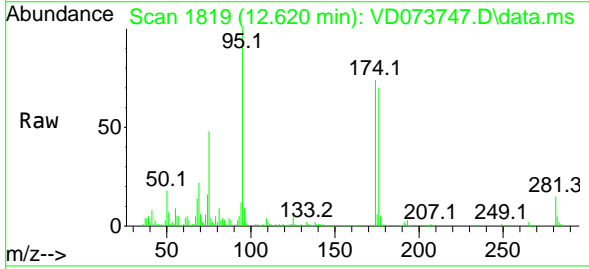
Instrument : MSVOA_D
 ClientSampleId : SP-EXC-2-3-GR



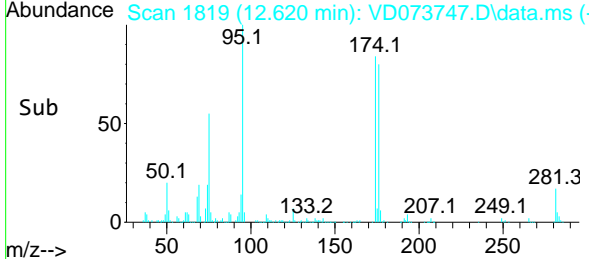
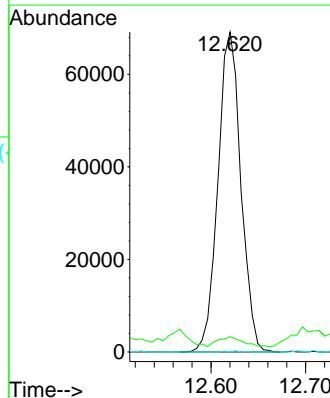
Tgt Ion: 75 Resp: 116274
 Ion Ratio Lower Upper
 75 100
 77 3.5 195.3 586.0#

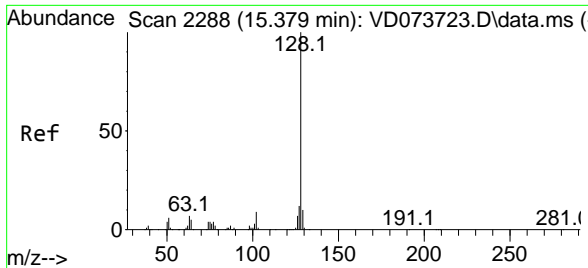


#81
 trans-1,4-Dichloro-2-butene
 Concen: 131.979 ug/l
 RT: 12.620 min Scan# 1819
 Delta R.T. 0.106 min
 Lab File: VD073747.D
 Acq: 28 Jun 2022 13:02



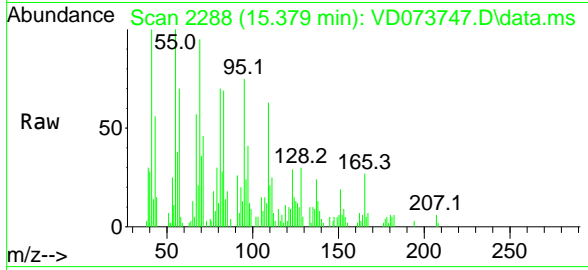
Tgt Ion: 75 Resp: 116274
 Ion Ratio Lower Upper
 75 100
 53 3.2 77.0 115.6#
 89 0.1 37.8 56.8#





#95
 Naphthalene
 Concen: 1.017 ug/l
 RT: 15.379 min Scan# 21
 Delta R.T. -0.000 min
 Lab File: VD073747.D
 Acq: 28 Jun 2022 13:02

Instrument : MSVOA_D
 ClientSampleId : SP-EXC-2-3-GR



Tgt Ion:128 Resp: 7295

Ion	Ratio	Lower	Upper
128	100		
127	24.9	10.6	16.0#
129	1.2	8.9	13.3#

