

Data Path : Z:\voasrv\HPCHEM1\MSVOA_D\Data\VD070122\
 Data File : VD073770.D
 Acq On : 01 Jul 2022 18:08
 Operator : VA/SY
 Sample : N3562-07
 Misc : 5.80G/5.00ml/MSVOA_D/SOIL
 ALS Vial : 14 Sample Multiplier: 1

Instrument :
 MSVOA_D
 ClientSampleId :
 SB-10A

Quant Time: Jul 05 05:10:09 2022
 Quant Method : Z:\voasrv\HPCHEM1\MSVOA_D\Method\82D063022S.M
 Quant Title : SW846 8260
 QLast Update : Tue Jul 05 04:59:39 2022
 Response via : Initial Calibration

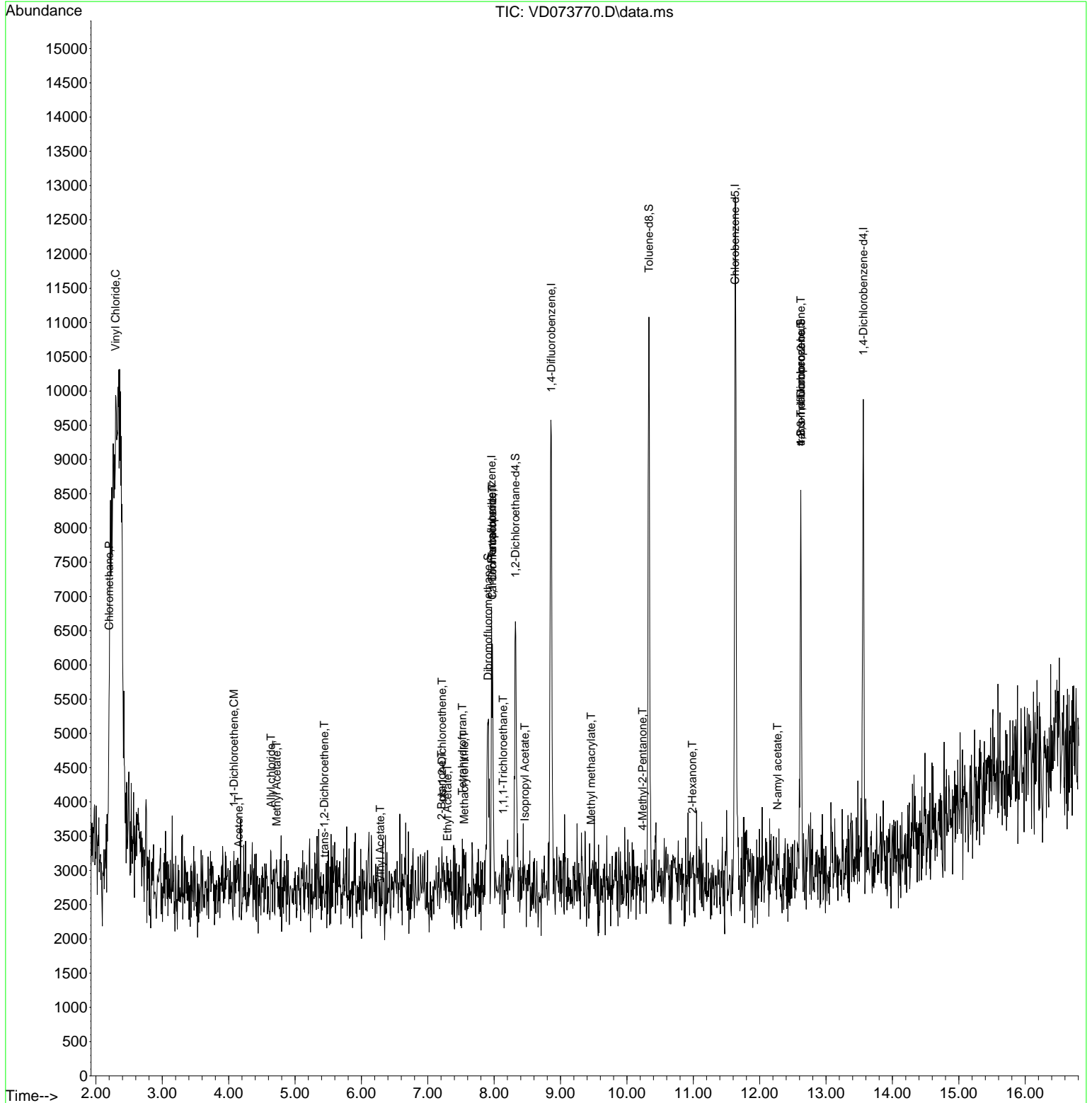
Compound	R.T.	QIon	Response	Conc	Units	Dev(Min)
Internal Standards						
1) Pentafluorobenzene	7.961	168	3377	50.000	ug/l	# 0.00
34) 1,4-Difluorobenzene	8.861	114	6621	50.000	ug/l	0.00
63) Chlorobenzene-d5	11.632	117	5319	50.000	ug/l	0.00
72) 1,4-Dichlorobenzene-d4	13.561	152	1611	50.000	ug/l	0.00
System Monitoring Compounds						
33) 1,2-Dichloroethane-d4	8.320	65	2731	82.899	ug/l	0.00
Spiked Amount	50.000	Range 50 - 163	Recovery	=	165.800%#	
35) Dibromofluoromethane	7.908	113	1948	54.159	ug/l	0.00
Spiked Amount	50.000	Range 54 - 147	Recovery	=	108.320%	
50) Toluene-d8	10.332	98	5764	43.687	ug/l	0.00
Spiked Amount	50.000	Range 49 - 140	Recovery	=	87.380%	
62) 4-Bromofluorobenzene	12.620	95	2091	40.182	ug/l	0.00
Spiked Amount	50.000	Range 25 - 144	Recovery	=	80.360%	
Target Compounds						
						Qvalue
3) Chloromethane	2.203	50	159	6.803	ug/l	# 40
4) Vinyl Chloride	2.297	62	175	6.625	ug/l	# 40
12) 1,1-Dichloroethene	4.079	96	71	2.590	ug/l	# 1
14) Allyl chloride	4.638	41	85	1.798	ug/l	# 22
16) Acetone	4.150	43	429	62.590	ug/l	# 43
18) Methyl Acetate	4.726	43	250	8.361	ug/l	# 50
21) trans-1,2-Dichloroethene	5.444	96	71	2.287	ug/l	# 1
23) Vinyl Acetate	6.285	43	130	2.159	ug/l	# 69
25) 2-Butanone	7.208	43	197	17.502	ug/l	# 47
27) cis-1,2-Dichloroethene	7.214	96	143	3.416	ug/l	# 1
29) Tetrahydrofuran	7.520	42	217	30.499	ug/l	# 31
31) Cyclohexane	7.973	56	64	Below Cal		# 13
32) 1,1,1-Trichloroethane	8.138	97	72	1.164	ug/l	# 24
36) 1,1-Dichloropropene	7.973	75	160	3.204	ug/l	# 41
37) Ethyl Acetate	7.297	43	133	5.052	ug/l	# 68
38) Carbon Tetrachloride	7.973	117	163	3.040	ug/l	# 11
41) Methacrylonitrile	7.550	41	71	4.160	ug/l	# 6
43) Isopropyl Acetate	8.461	43	97	1.728	ug/l	# 50
48) Methyl methacrylate	9.461	41	198	7.863	ug/l	# 13
51) 4-Methyl-2-Pentanone	10.238	43	236	8.260	ug/l	# 35
59) 2-Hexanone	10.985	43	354	18.182	ug/l	# 22
74) N-amyl acetate	12.267	43	55	1.660	ug/l	# 41
76) 1,2,3-Trichloropropane	12.620	75	1226	79.632	ug/l	# 1
81) trans-1,4-Dichloro-2-b...	12.620	75	1226	153.621	ug/l	# 11

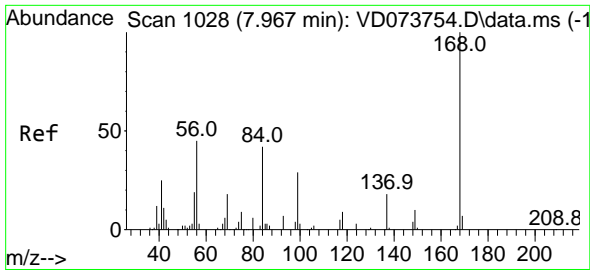
(#) = qualifier out of range (m) = manual integration (+) = signals summed

Data Path : Z:\voasrv\HPCHEM1\MSVOA_D\Data\VD070122\
 Data File : VD073770.D
 Acq On : 01 Jul 2022 18:08
 Operator : VA/SY
 Sample : N3562-07
 Misc : 5.80G/5.00ml/MSVOA_D/SOIL
 ALS Vial : 14 Sample Multiplier: 1

Instrument :
 MSVOA_D
 ClientSampleId :
 SB-10A

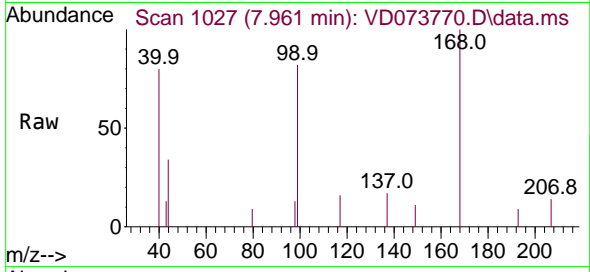
Quant Time: Jul 05 05:10:09 2022
 Quant Method : Z:\voasrv\HPCHEM1\MSVOA_D\Method\82D063022S.M
 Quant Title : SW846 8260
 QLast Update : Tue Jul 05 04:59:39 2022
 Response via : Initial Calibration



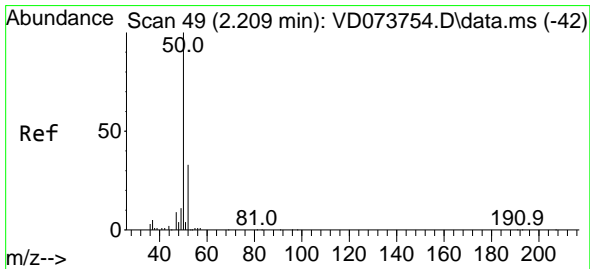
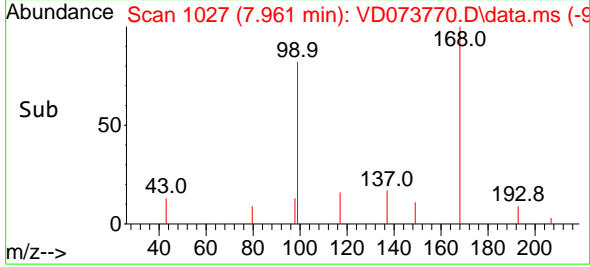
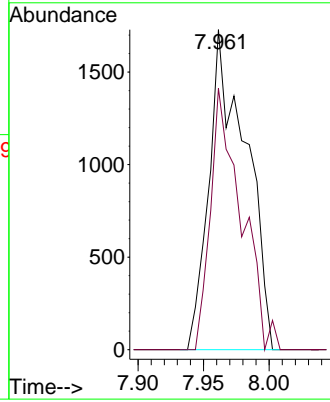


#1
 Pentafluorobenzene
 Concen: 50.000 ug/l
 RT: 7.961 min Scan# 1027
 Delta R.T. -0.006 min
 Lab File: VD073770.D
 Acq: 01 Jul 2022 18:08

Instrument : MSVOA_D
 ClientSampleId : SB-10A

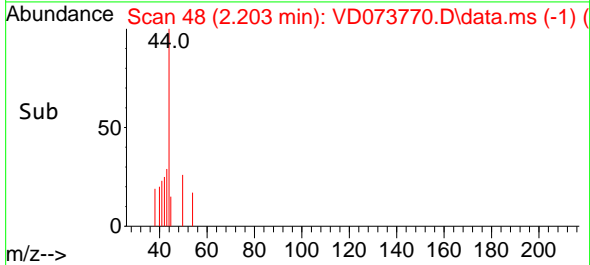
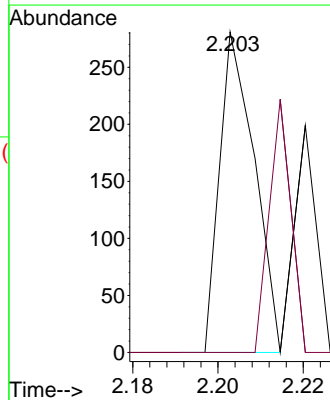
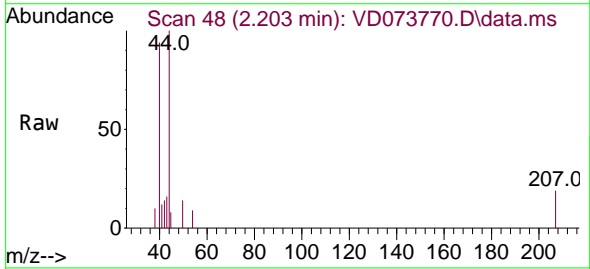


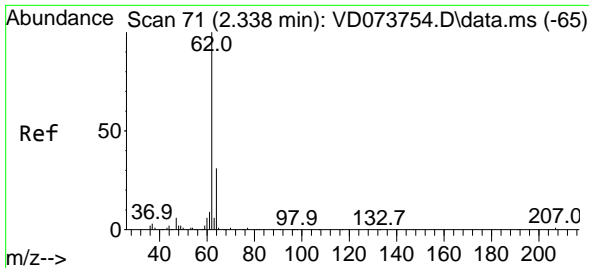
Tgt Ion:168 Resp: 3377
 Ion Ratio Lower Upper
 168 100
 99 81.7 46.4 69.6#



#3
 Chloromethane
 Concen: 6.803 ug/l
 RT: 2.203 min Scan# 48
 Delta R.T. -0.006 min
 Lab File: VD073770.D
 Acq: 01 Jul 2022 18:08

Tgt Ion: 50 Resp: 159
 Ion Ratio Lower Upper
 50 100
 52 0.0 27.8 41.6#

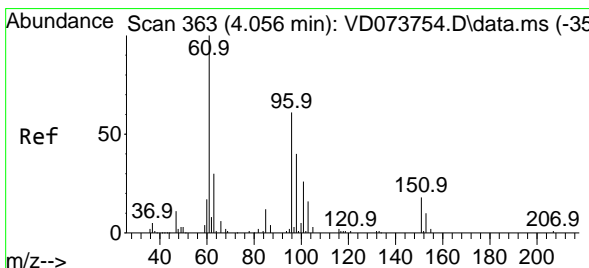
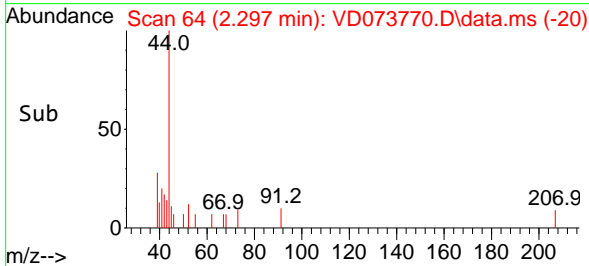
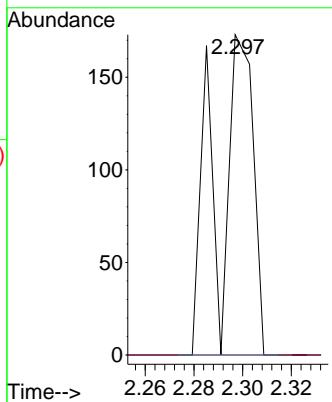
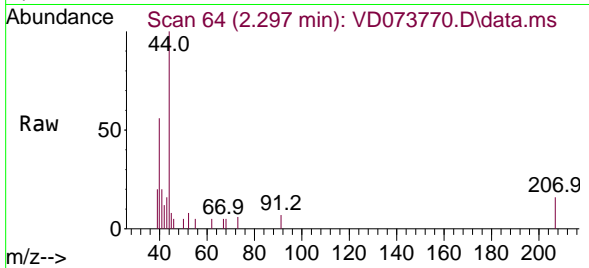




#4
 Vinyl Chloride
 Concen: 6.625 ug/l
 RT: 2.297 min Scan# 64
 Delta R.T. -0.041 min
 Lab File: VD073770.D
 Acq: 01 Jul 2022 18:08

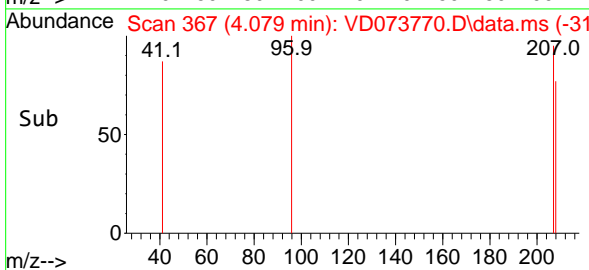
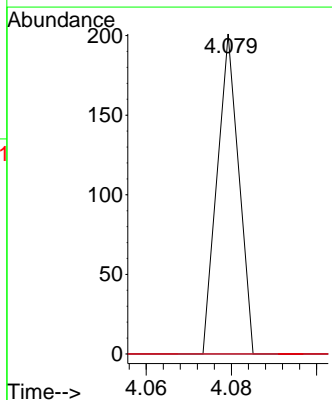
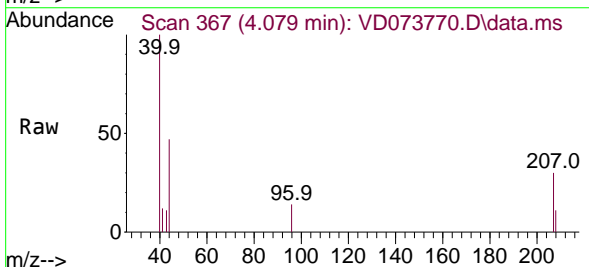
Instrument :
 MSVOA_D
 ClientSampleId :
 SB-10A

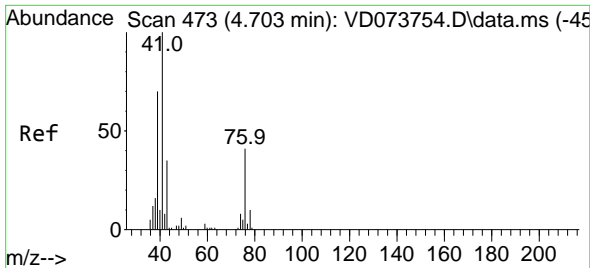
Tgt Ion: 62 Resp: 175
 Ion Ratio Lower Upper
 62 100
 64 0.0 27.8 41.6#



#12
 1,1-Dichloroethene
 Concen: 2.590 ug/l
 RT: 4.079 min Scan# 367
 Delta R.T. 0.023 min
 Lab File: VD073770.D
 Acq: 01 Jul 2022 18:08

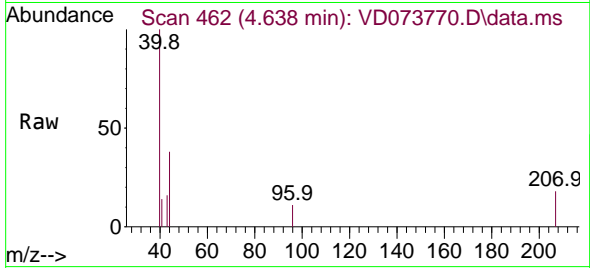
Tgt Ion: 96 Resp: 71
 Ion Ratio Lower Upper
 96 100
 61 0.0 116.3 174.5#
 98 0.0 48.7 73.1#



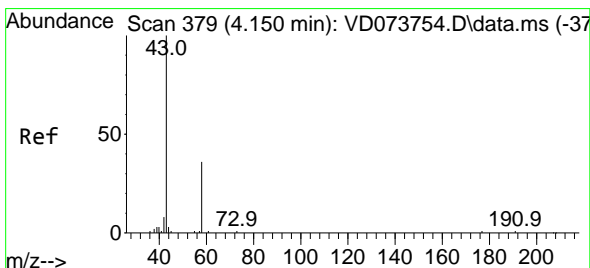
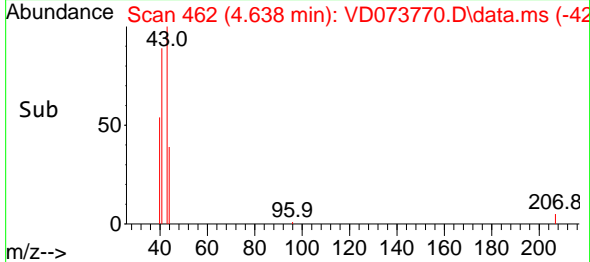
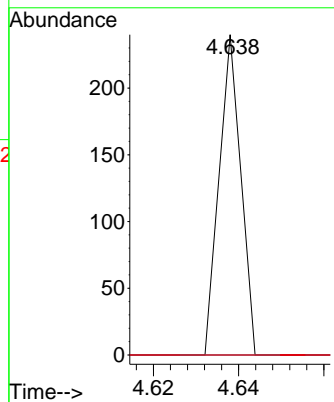


#14
 Allyl chloride
 Concen: 1.798 ug/l
 RT: 4.638 min Scan# 41
 Delta R.T. -0.065 min
 Lab File: VD073770.D
 Acq: 01 Jul 2022 18:08

Instrument :
 MSVOA_D
 ClientSampleId :
 SB-10A

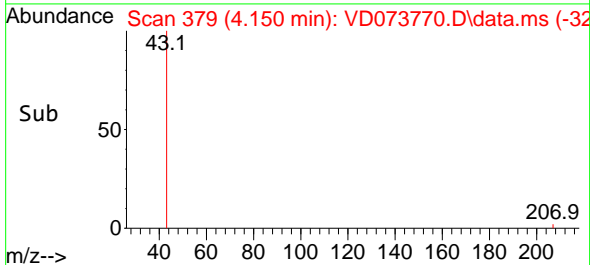
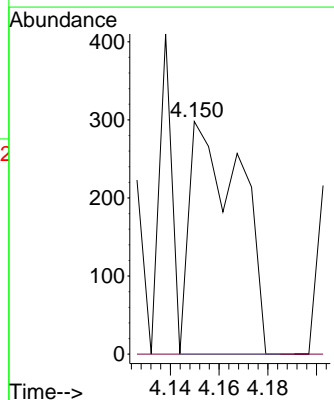
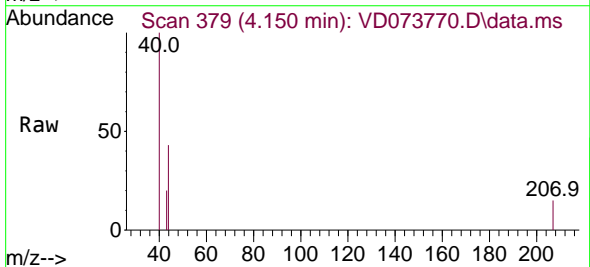


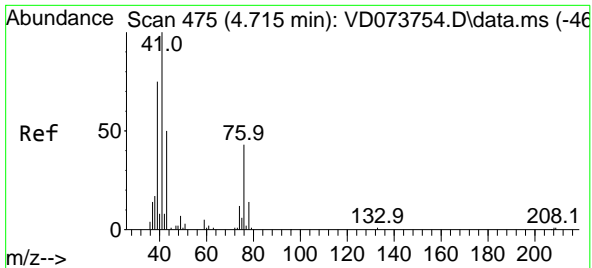
Tgt Ion: 41 Resp: 85
 Ion Ratio Lower Upper
 41 100
 39 0.0 56.6 85.0#
 76 0.0 32.7 49.1#



#16
 Acetone
 Concen: 62.590 ug/l
 RT: 4.150 min Scan# 379
 Delta R.T. -0.000 min
 Lab File: VD073770.D
 Acq: 01 Jul 2022 18:08

Tgt Ion: 43 Resp: 429
 Ion Ratio Lower Upper
 43 100
 58 0.0 25.2 37.8#

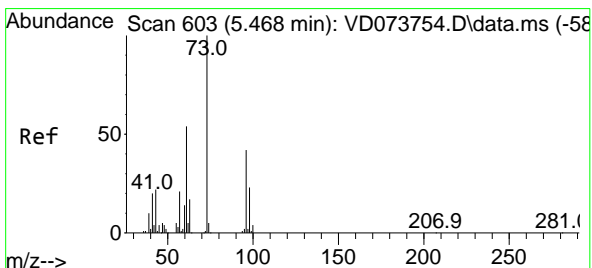
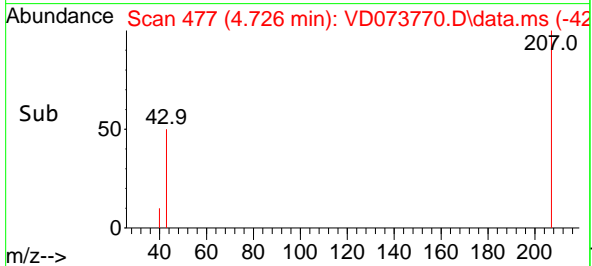
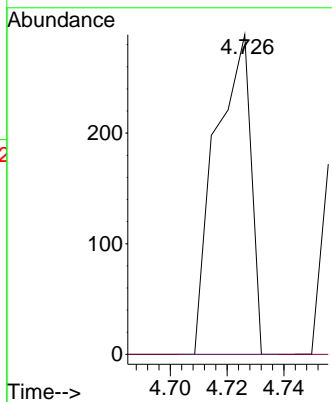
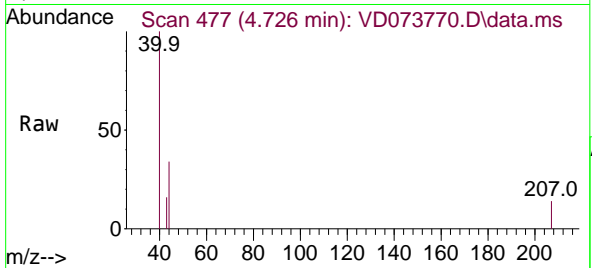




#18
 Methyl Acetate
 Concen: 8.361 ug/l
 RT: 4.726 min Scan# 411
 Delta R.T. 0.011 min
 Lab File: VD073770.D
 Acq: 01 Jul 2022 18:08

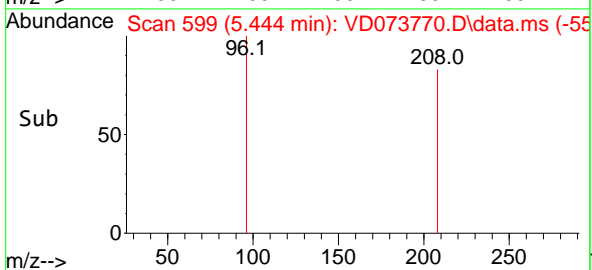
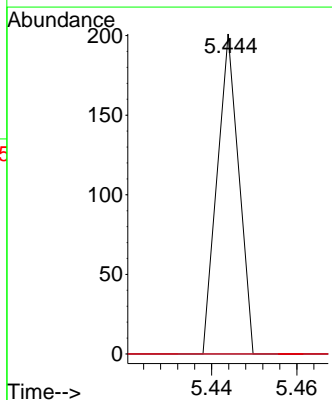
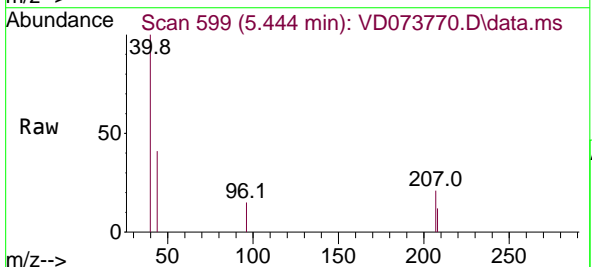
Instrument : MSVOA_D
 ClientSampleId : SB-10A

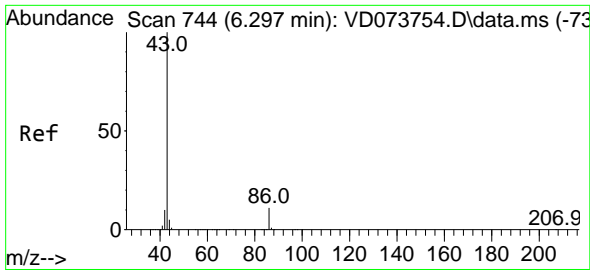
Tgt Ion: 43 Resp: 250
 Ion Ratio Lower Upper
 43 100
 74 0.0 20.2 30.4#



#21
 trans-1,2-Dichloroethene
 Concen: 2.287 ug/l
 RT: 5.444 min Scan# 599
 Delta R.T. -0.024 min
 Lab File: VD073770.D
 Acq: 01 Jul 2022 18:08

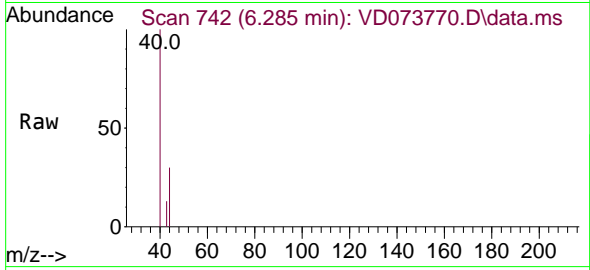
Tgt Ion: 96 Resp: 71
 Ion Ratio Lower Upper
 96 100
 61 0.0 105.0 157.6#
 98 0.0 50.6 75.8#



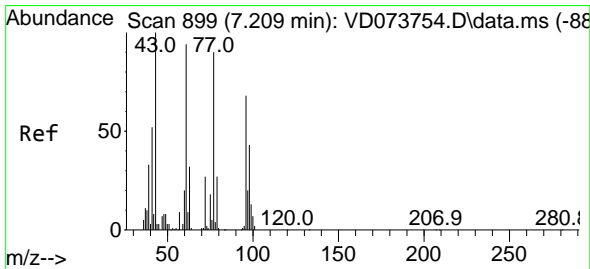
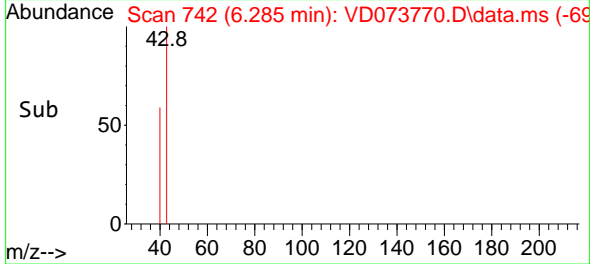
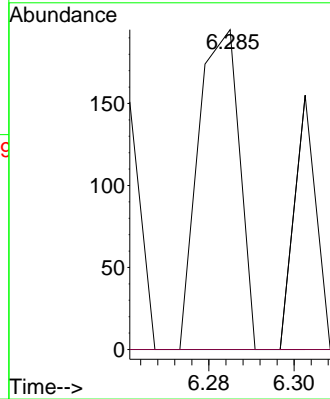


#23
 Vinyl Acetate
 Concen: 2.159 ug/l
 RT: 6.285 min Scan# 744
 Delta R.T. -0.012 min
 Lab File: VD073770.D
 Acq: 01 Jul 2022 18:08

Instrument : MSVOA_D
 ClientSampleId : SB-10A

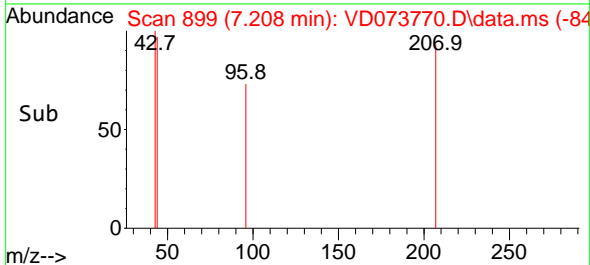
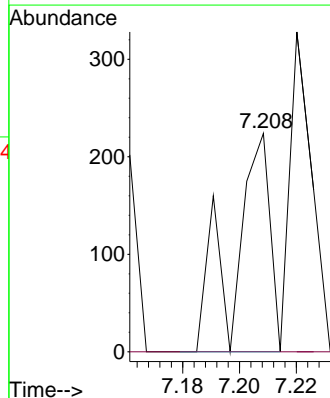
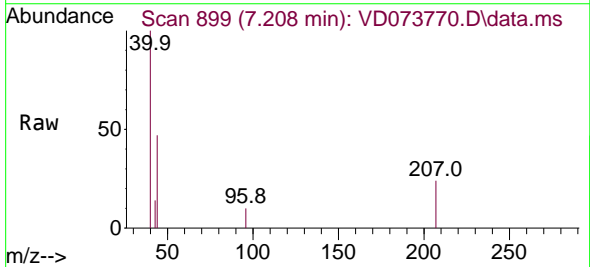


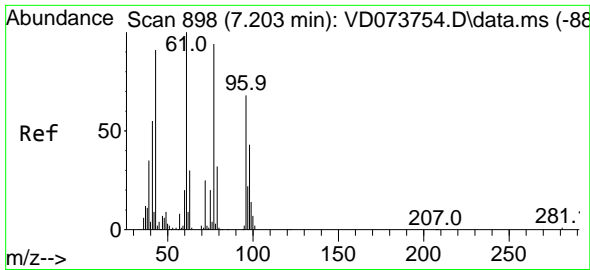
Tgt Ion: 43 Resp: 130
 Ion Ratio Lower Upper
 43 100
 86 0.0 9.7 14.5#



#25
 2-Butanone
 Concen: 17.502 ug/l
 RT: 7.208 min Scan# 899
 Delta R.T. -0.000 min
 Lab File: VD073770.D
 Acq: 01 Jul 2022 18:08

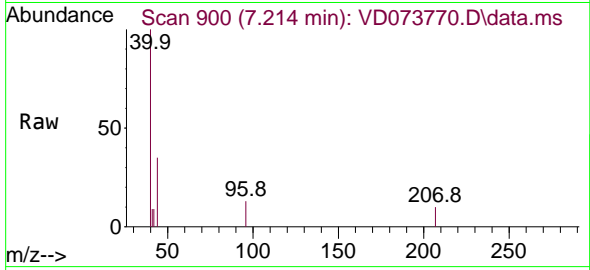
Tgt Ion: 43 Resp: 197
 Ion Ratio Lower Upper
 43 100
 72 0.0 22.6 33.8#



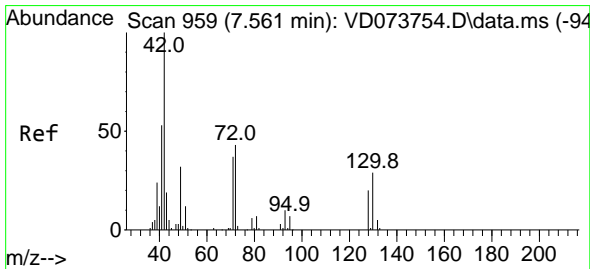
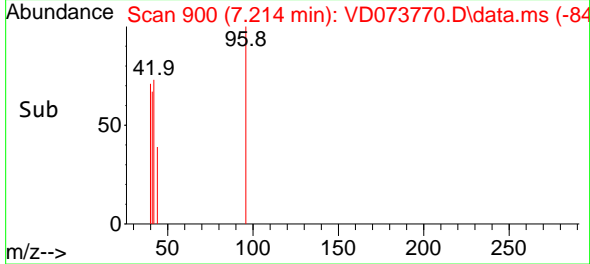
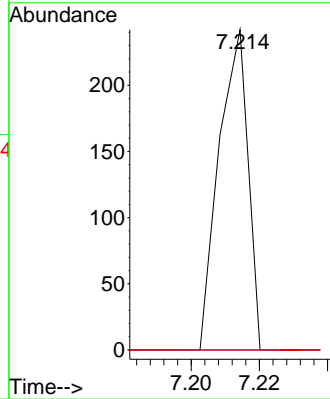


#27
 cis-1,2-Dichloroethene
 Concen: 3.416 ug/l
 RT: 7.214 min Scan# 900
 Delta R.T. 0.012 min
 Lab File: VD073770.D
 Acq: 01 Jul 2022 18:08

Instrument : MSVOA_D
 ClientSampleId : SB-10A

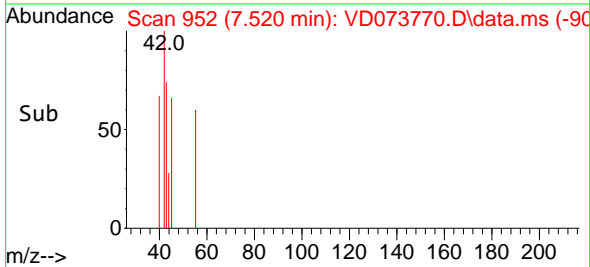
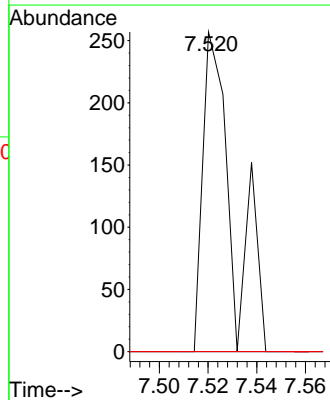
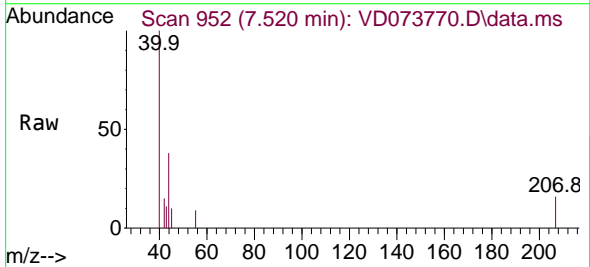


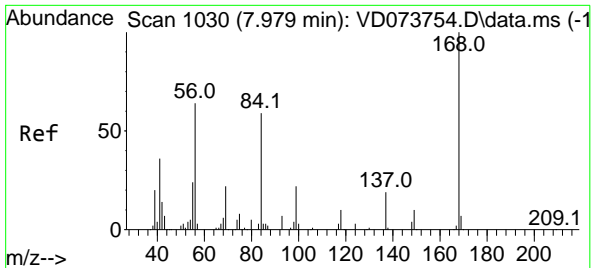
Tgt Ion: 96 Resp: 143
 Ion Ratio Lower Upper
 96 100
 61 0.0 0.0 276.0
 98 0.0 0.0 128.0



#29
 Tetrahydrofuran
 Concen: 30.499 ug/l
 RT: 7.520 min Scan# 952
 Delta R.T. -0.041 min
 Lab File: VD073770.D
 Acq: 01 Jul 2022 18:08

Tgt Ion: 42 Resp: 217
 Ion Ratio Lower Upper
 42 100
 72 0.0 37.8 56.6#
 71 0.0 35.5 53.3#

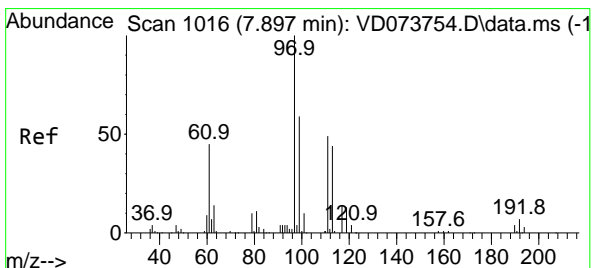
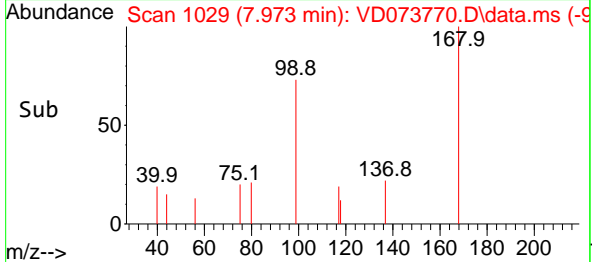
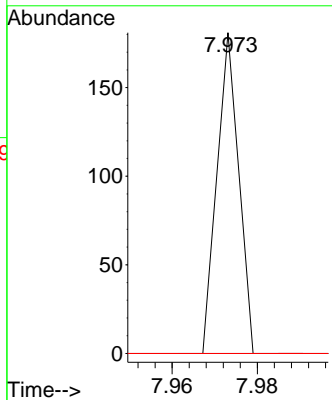
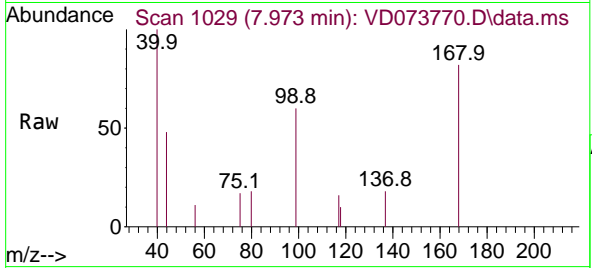




#31
 Cyclohexane
 Concen: Below Cal
 RT: 7.973 min Scan# 1029
 Delta R.T. -0.006 min
 Lab File: VD073770.D
 Acq: 01 Jul 2022 18:08

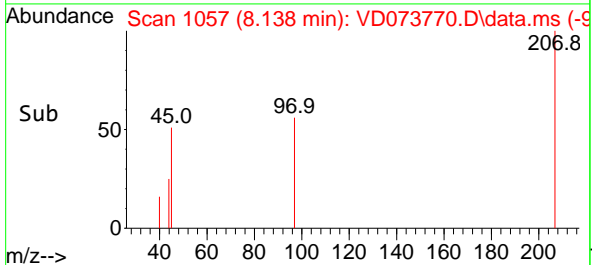
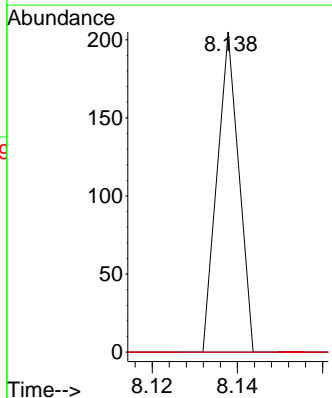
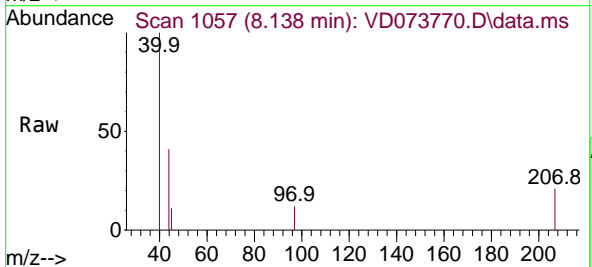
Instrument : MSVOA_D
 ClientSampleId : SB-10A

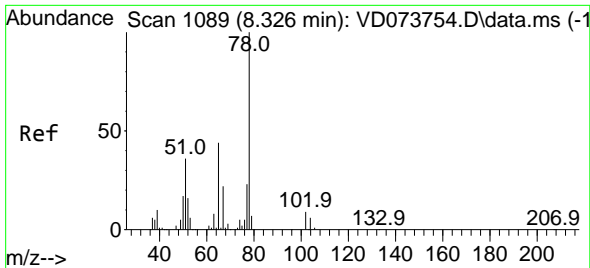
Tgt Ion	Resp	Lower	Upper
56	100		
69	0.0	25.2	37.8#
84	0.0	75.4	113.2#



#32
 1,1,1-Trichloroethane
 Concen: 1.164 ug/l
 RT: 8.138 min Scan# 1057
 Delta R.T. 0.241 min
 Lab File: VD073770.D
 Acq: 01 Jul 2022 18:08

Tgt Ion	Resp	Lower	Upper
97	100		
99	0.0	51.2	76.8#
61	0.0	33.4	50.0#

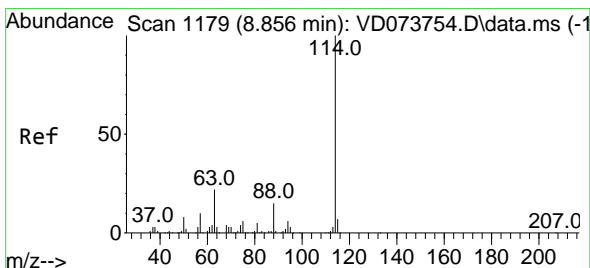
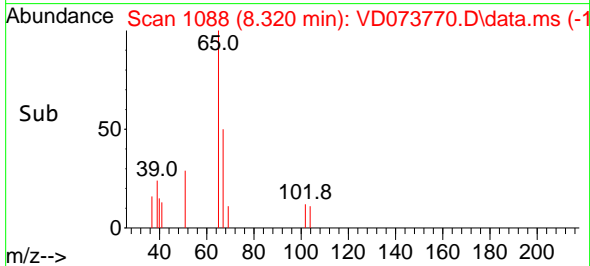
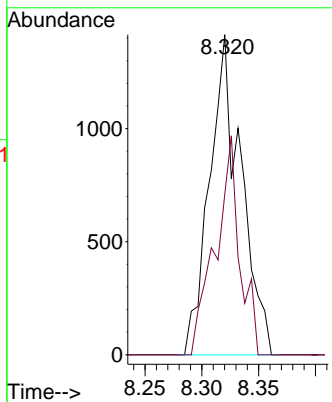
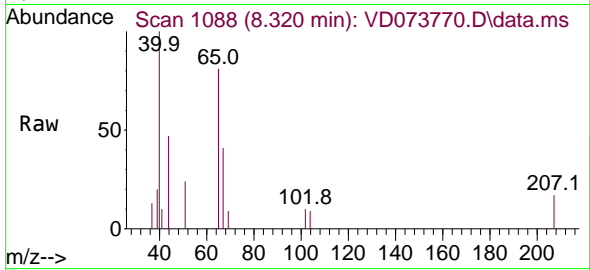




#33
 1,2-Dichloroethane-d4
 Concen: 82.899 ug/l
 RT: 8.320 min Scan# 1180
 Delta R.T. -0.006 min
 Lab File: VD073770.D
 Acq: 01 Jul 2022 18:08

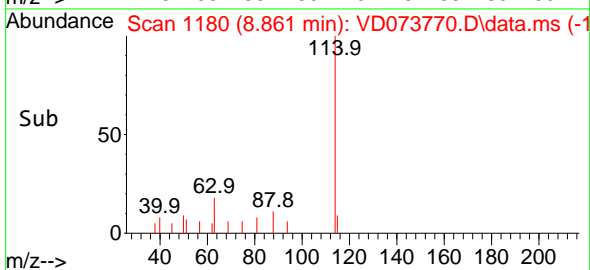
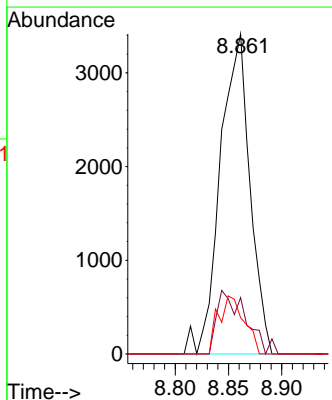
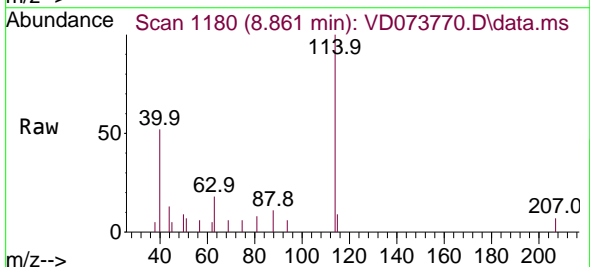
Instrument : MSVOA_D
 ClientSampleId : SB-10A

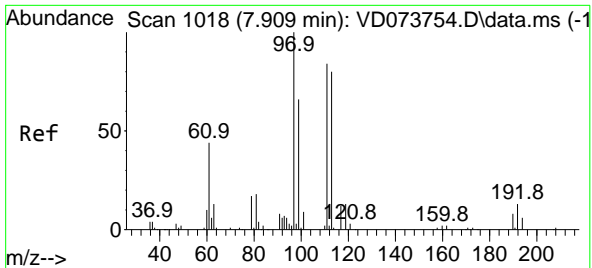
Tgt Ion: 65 Resp: 2731
 Ion Ratio Lower Upper
 65 100
 67 52.7 0.0 107.2



#34
 1,4-Difluorobenzene
 Concen: 50.000 ug/l
 RT: 8.861 min Scan# 1180
 Delta R.T. 0.006 min
 Lab File: VD073770.D
 Acq: 01 Jul 2022 18:08

Tgt Ion:114 Resp: 6621
 Ion Ratio Lower Upper
 114 100
 63 17.6 0.0 39.2
 88 11.4 0.0 29.4



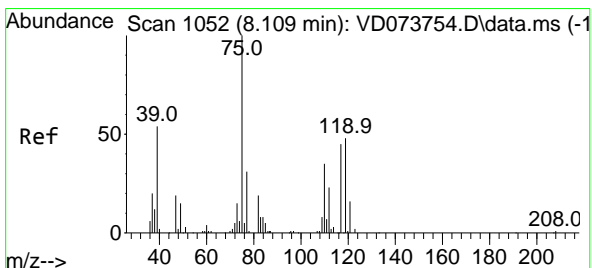
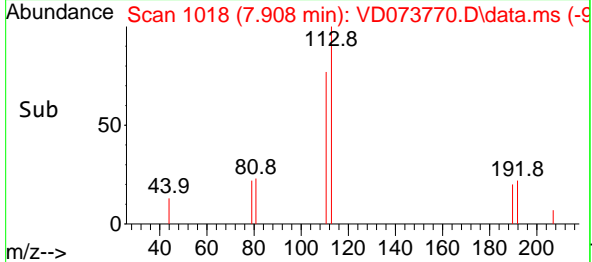
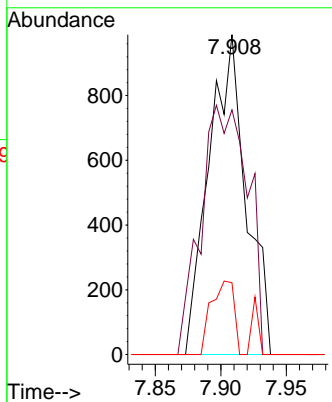
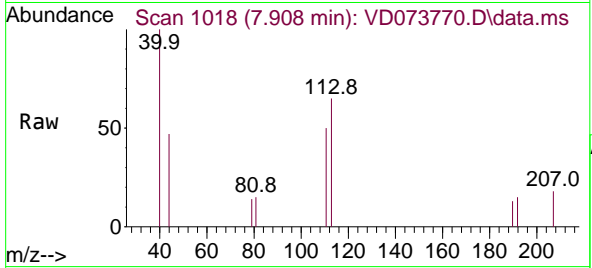


#35
 Dibromofluoromethane
 Concen: 54.159 ug/l
 RT: 7.908 min Scan# 1029
 Delta R.T. -0.000 min
 Lab File: VD073770.D
 Acq: 01 Jul 2022 18:08

Instrument : MSVOA_D
 ClientSampleId : SB-10A

Tgt Ion:113 Resp: 1948

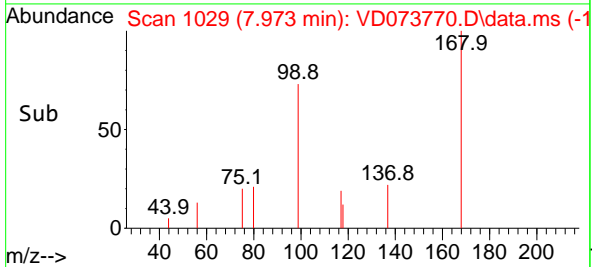
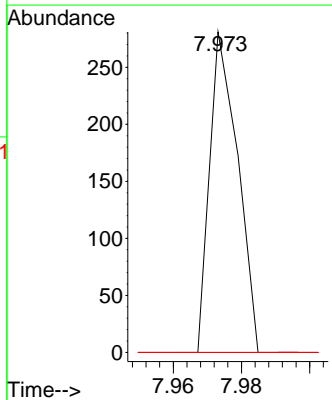
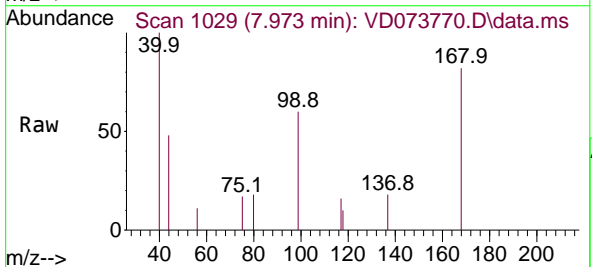
Ion	Ratio	Lower	Upper
113	100		
111	98.6	81.8	122.6
192	14.1	14.8	22.2#

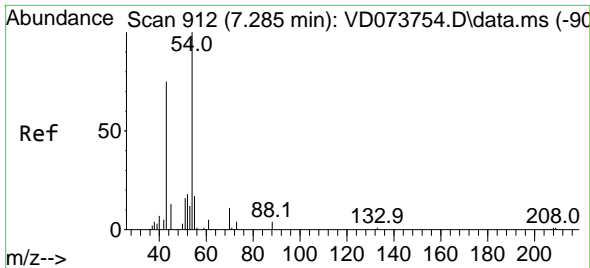


#36
 1,1-Dichloropropene
 Concen: 3.204 ug/l
 RT: 7.973 min Scan# 1029
 Delta R.T. -0.135 min
 Lab File: VD073770.D
 Acq: 01 Jul 2022 18:08

Tgt Ion: 75 Resp: 160

Ion	Ratio	Lower	Upper
75	100		
110	0.0	18.0	54.0#
77	0.0	25.6	38.4#

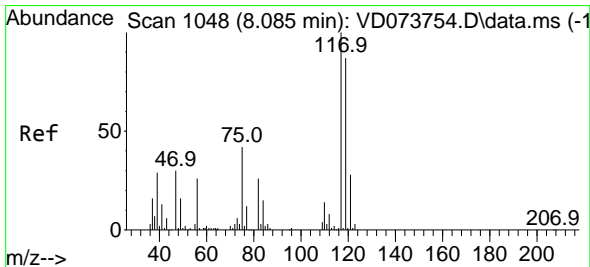
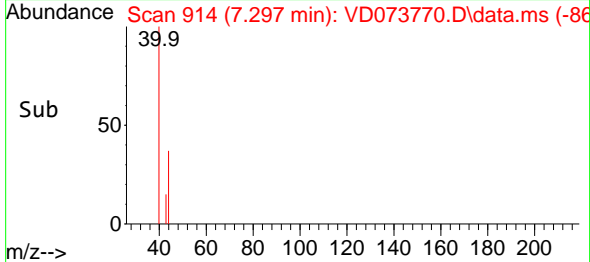
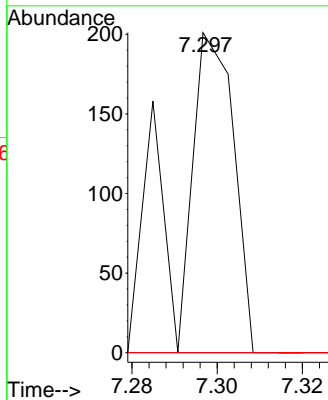
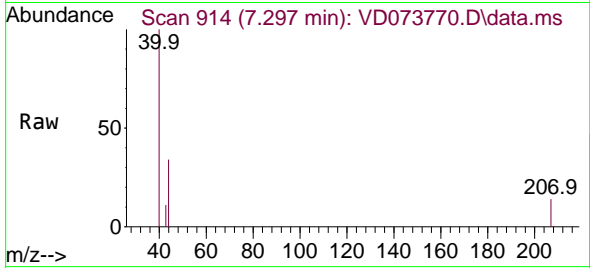




#37
 Ethyl Acetate
 Concen: 5.052 ug/l
 RT: 7.297 min Scan# 914
 Delta R.T. 0.012 min
 Lab File: VD073770.D
 Acq: 01 Jul 2022 18:08

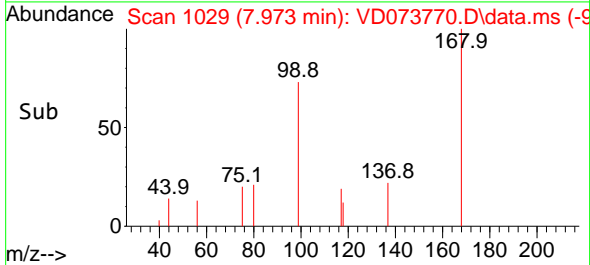
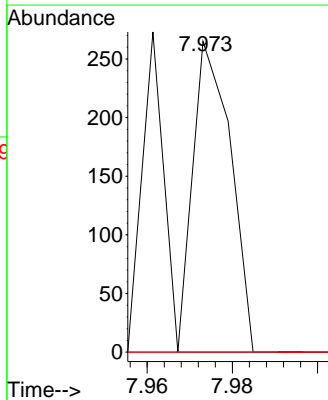
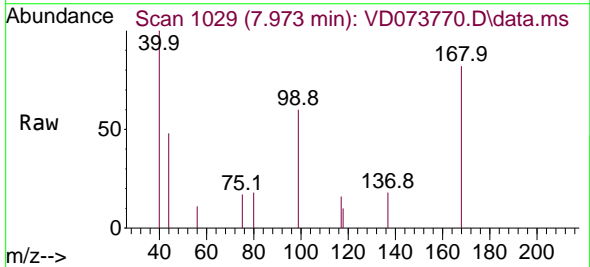
Instrument : MSVOA_D
 ClientSampleId : SB-10A

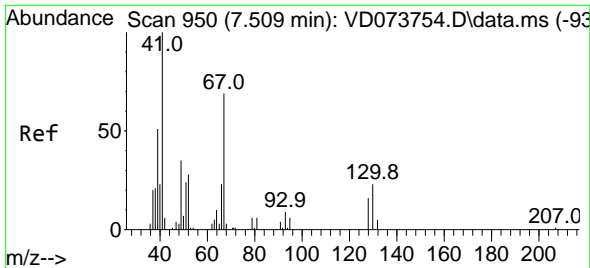
Tgt Ion	Resp	Lower	Upper
43	100		
61	0.0	10.6	16.0#
70	0.0	9.9	14.9#



#38
 Carbon Tetrachloride
 Concen: 3.040 ug/l
 RT: 7.973 min Scan# 1029
 Delta R.T. -0.112 min
 Lab File: VD073770.D
 Acq: 01 Jul 2022 18:08

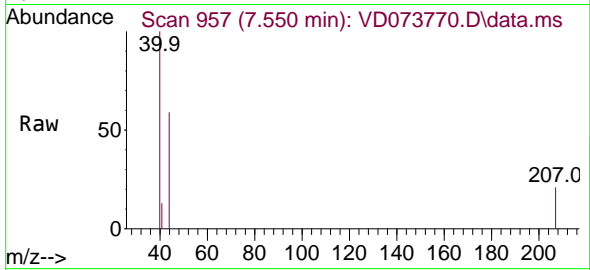
Tgt Ion	Resp	Lower	Upper
117	100		
119	0.0	79.2	118.8#
121	0.0	23.8	35.8#





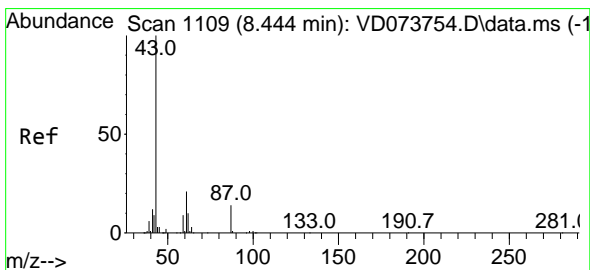
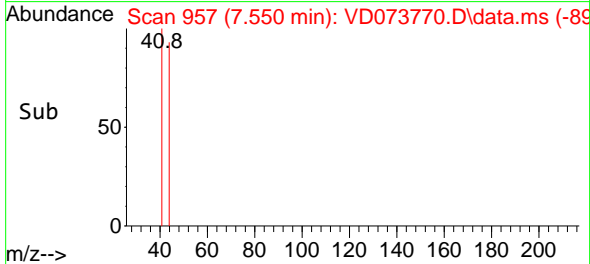
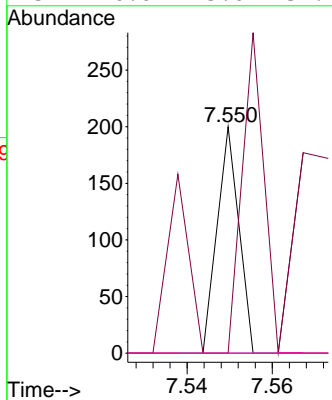
#41
 Methacrylonitrile
 Concen: 4.160 ug/l
 RT: 7.550 min Scan# 91
 Delta R.T. 0.041 min
 Lab File: VD073770.D
 Acq: 01 Jul 2022 18:08

Instrument :
 MSVOA_D
 ClientSampleId :
 SB-10A



Tgt Ion: 41 Resp: 71

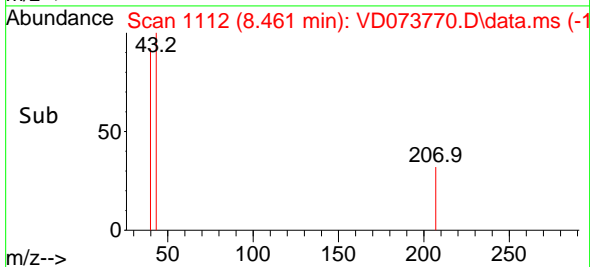
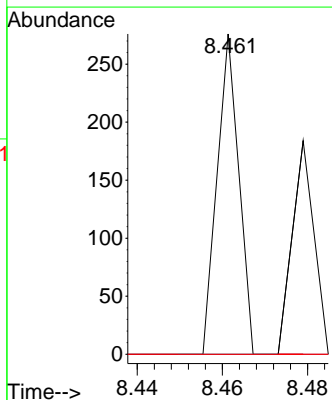
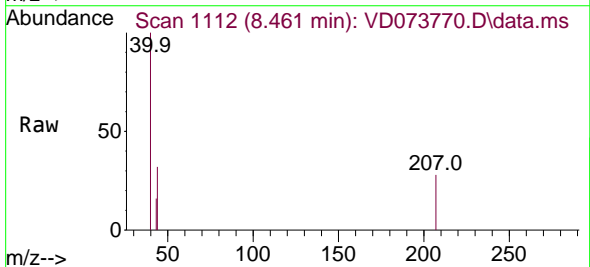
Ion	Ratio	Lower	Upper
41	100		
39	140.8	42.1	63.1#
67	0.0	58.6	87.8#
52	0.0	25.0	37.4#

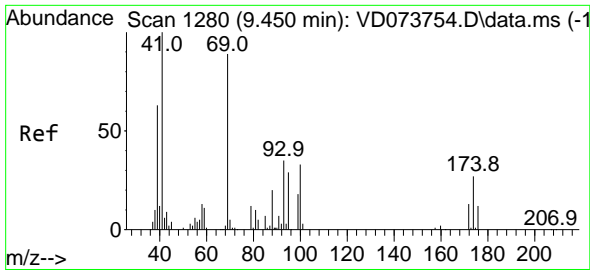


#43
 Isopropyl Acetate
 Concen: 1.728 ug/l
 RT: 8.461 min Scan# 1112
 Delta R.T. 0.018 min
 Lab File: VD073770.D
 Acq: 01 Jul 2022 18:08

Tgt Ion: 43 Resp: 97

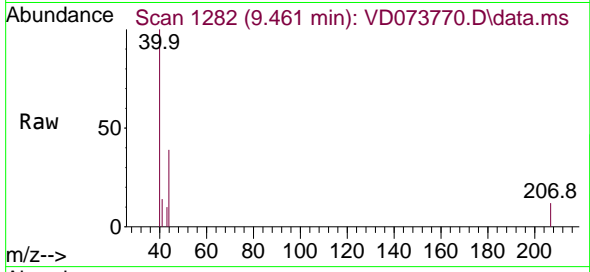
Ion	Ratio	Lower	Upper
43	100		
61	0.0	25.4	38.0#
87	0.0	11.9	17.9#



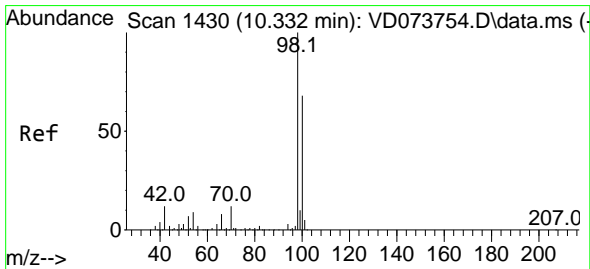
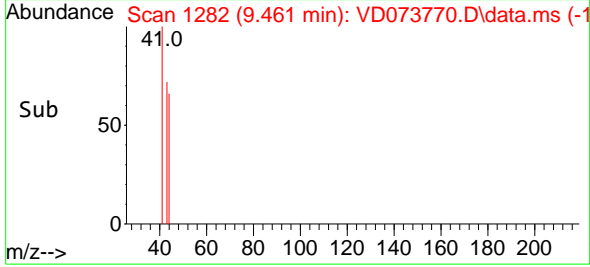
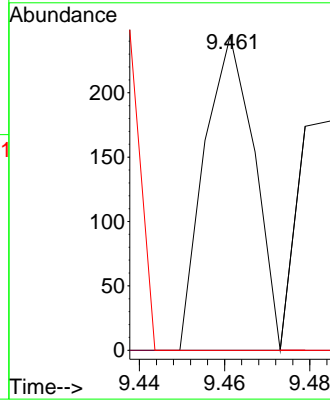


#48
 Methyl methacrylate
 Concen: 7.863 ug/l
 RT: 9.461 min Scan# 11
 Delta R.T. 0.012 min
 Lab File: VD073770.D
 Acq: 01 Jul 2022 18:08

Instrument :
 MSVOA_D
 ClientSampleId :
 SB-10A

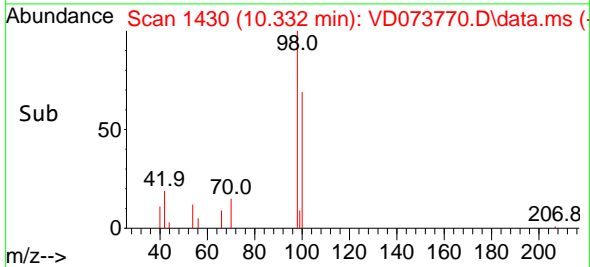
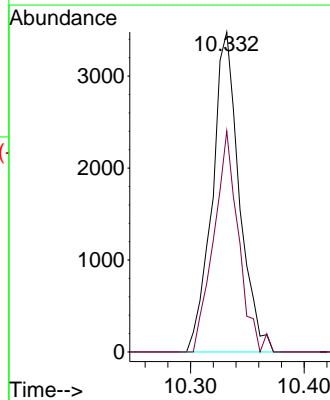
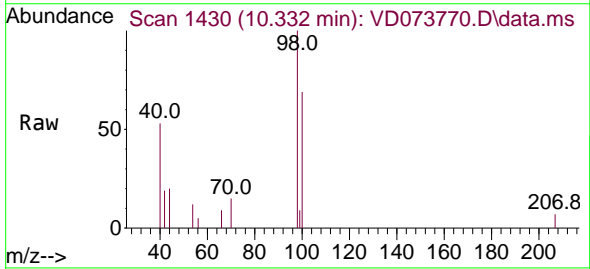


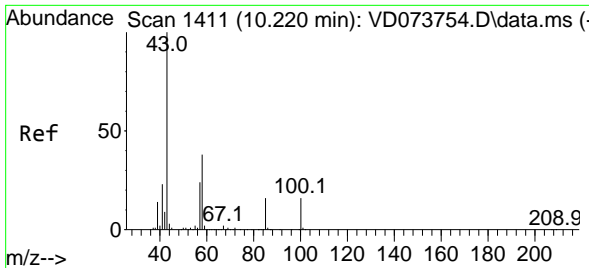
Tgt Ion: 41 Resp: 198
 Ion Ratio Lower Upper
 41 100
 69 0.0 69.6 104.4#
 39 0.0 45.5 68.3#



#50
 Toluene-d8
 Concen: 43.687 ug/l
 RT: 10.332 min Scan# 1430
 Delta R.T. -0.000 min
 Lab File: VD073770.D
 Acq: 01 Jul 2022 18:08

Tgt Ion: 98 Resp: 5764
 Ion Ratio Lower Upper
 98 100
 100 63.3 54.0 81.0

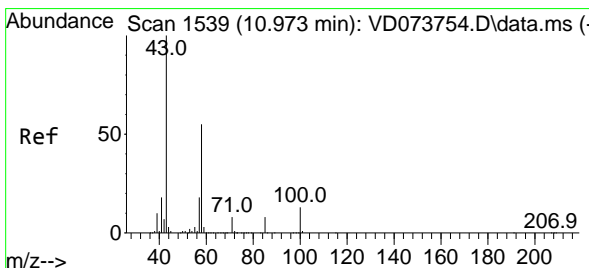
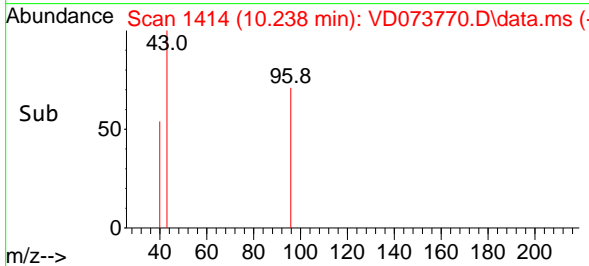
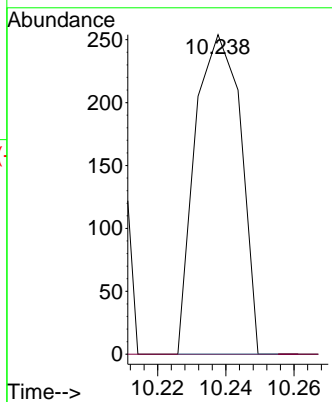
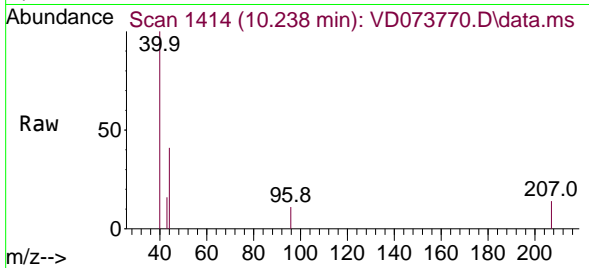




#51
 4-Methyl-2-Pentanone
 Concen: 8.260 ug/l
 RT: 10.238 min Scan# 1411
 Delta R.T. 0.018 min
 Lab File: VD073770.D
 Acq: 01 Jul 2022 18:08

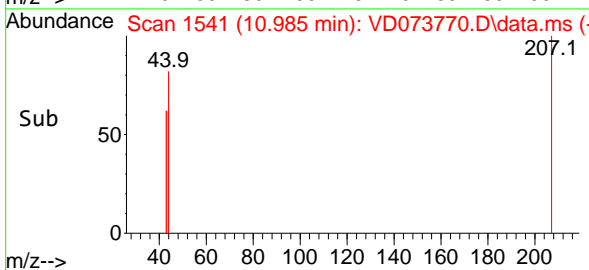
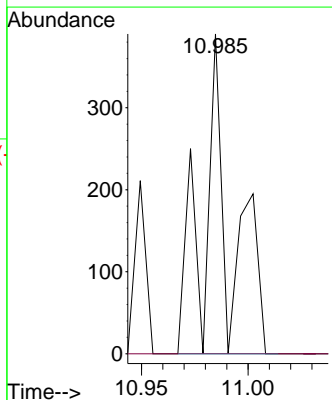
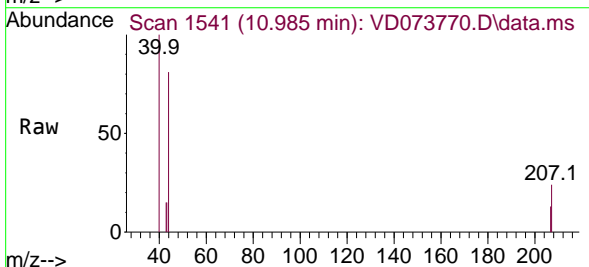
Instrument :
 MSVOA_D
 ClientSampleId :
 SB-10A

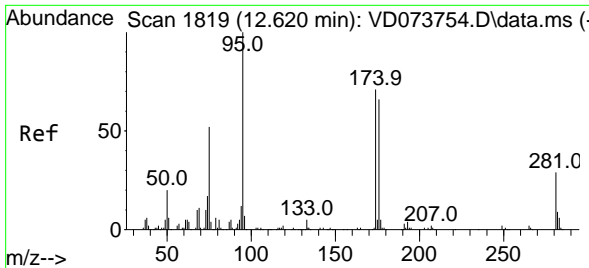
Tgt Ion: 43 Resp: 236
 Ion Ratio Lower Upper
 43 100
 58 0.0 32.3 48.5#



#59
 2-Hexanone
 Concen: 18.182 ug/l
 RT: 10.985 min Scan# 1541
 Delta R.T. 0.012 min
 Lab File: VD073770.D
 Acq: 01 Jul 2022 18:08

Tgt Ion: 43 Resp: 354
 Ion Ratio Lower Upper
 43 100
 58 0.0 28.8 86.4#

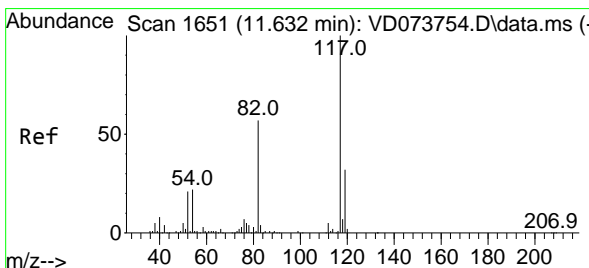
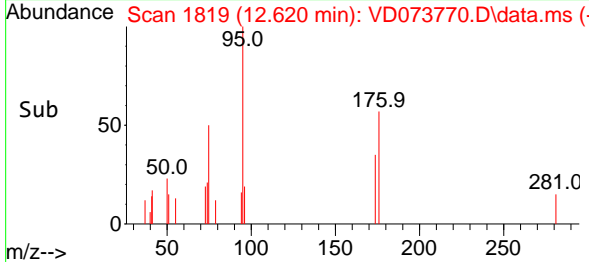
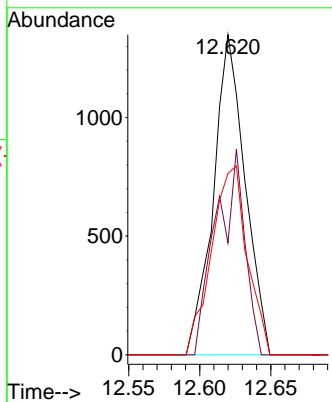
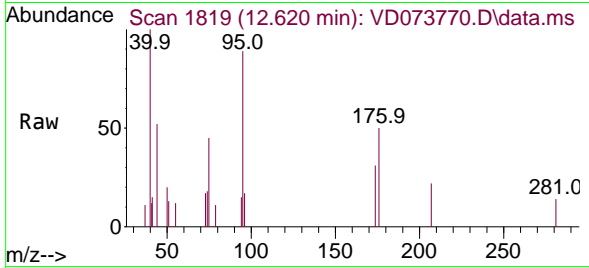




#62
 4-Bromofluorobenzene
 Concen: 40.182 ug/l
 RT: 12.620 min Scan# 1819
 Delta R.T. -0.000 min
 Lab File: VD073770.D
 Acq: 01 Jul 2022 18:08

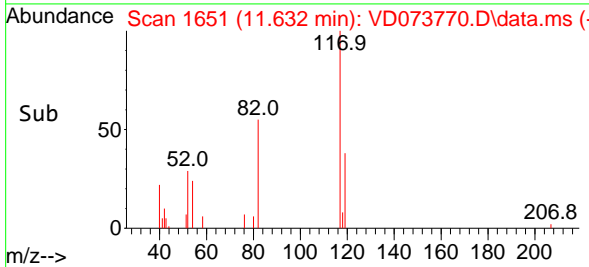
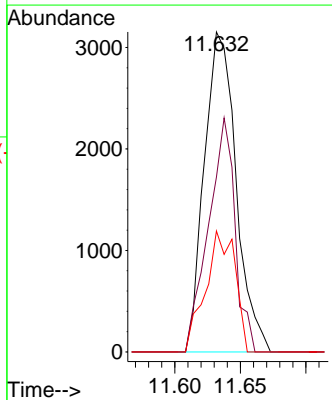
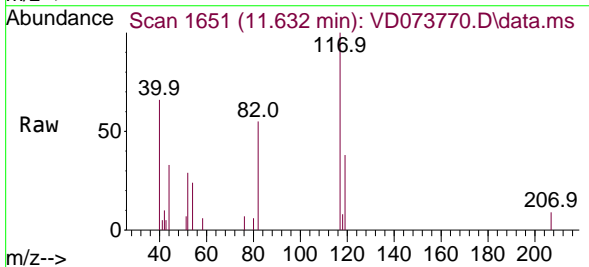
Instrument :
 MSVOA_D
 ClientSampleId :
 SB-10A

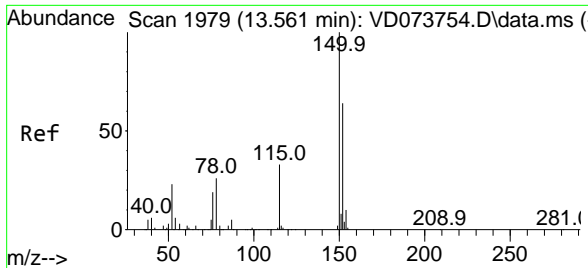
Tgt Ion	Resp	Lower	Upper
95	100		
174	58.0	0.0	158.4
176	66.3	0.0	154.8



#63
 Chlorobenzene-d5
 Concen: 50.000 ug/l
 RT: 11.632 min Scan# 1651
 Delta R.T. -0.000 min
 Lab File: VD073770.D
 Acq: 01 Jul 2022 18:08

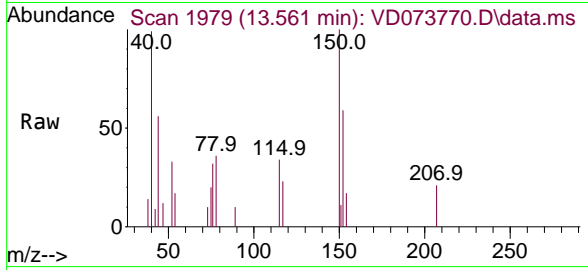
Tgt Ion	Resp	Lower	Upper
117	100		
82	54.6	41.5	62.3
119	37.8	27.1	40.7





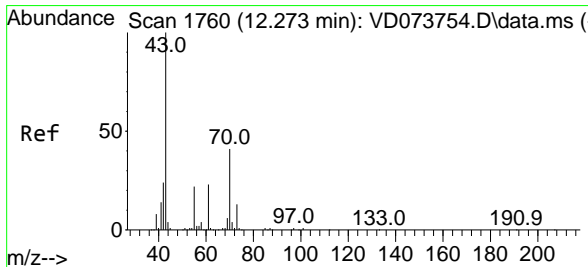
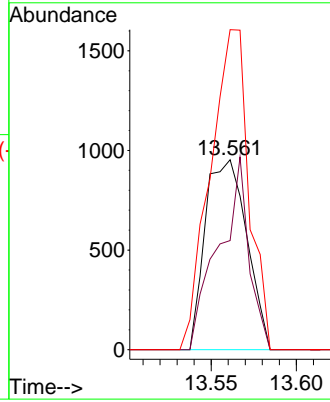
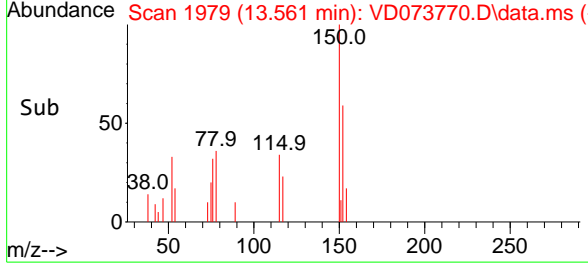
#72
 1,4-Dichlorobenzene-d4
 Concen: 50.000 ug/l
 RT: 13.561 min Scan# 1979
 Delta R.T. -0.000 min
 Lab File: VD073770.D
 Acq: 01 Jul 2022 18:08

Instrument : MSVOA_D
 ClientSampleId : SB-10A

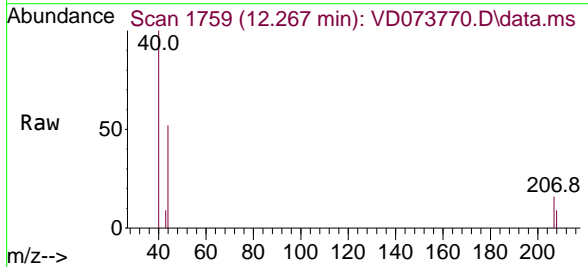


Tgt Ion:152 Resp: 1611

Ion	Ratio	Lower	Upper
152	100		
115	73.3	30.6	91.6
150	157.6	0.0	355.0

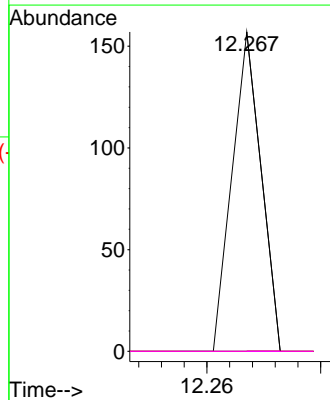
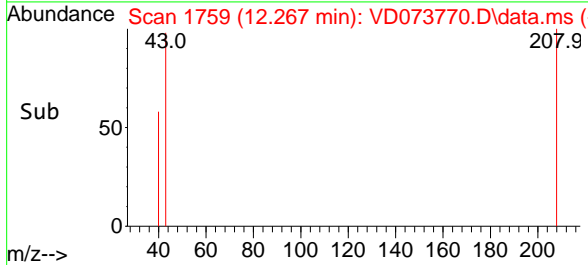


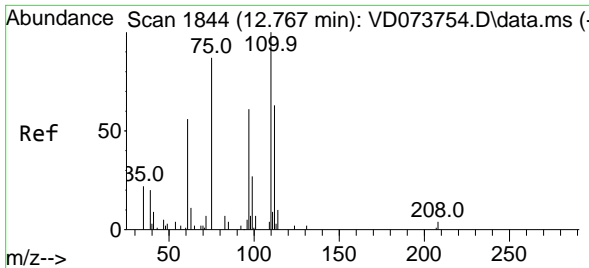
#74
 N-amy1 acetate
 Concen: 1.660 ug/l
 RT: 12.267 min Scan# 1759
 Delta R.T. -0.006 min
 Lab File: VD073770.D
 Acq: 01 Jul 2022 18:08



Tgt Ion: 43 Resp: 55

Ion	Ratio	Lower	Upper
43	100		
70	0.0	35.0	52.6#
55	0.0	21.0	31.4#
61	0.0	20.3	30.5#

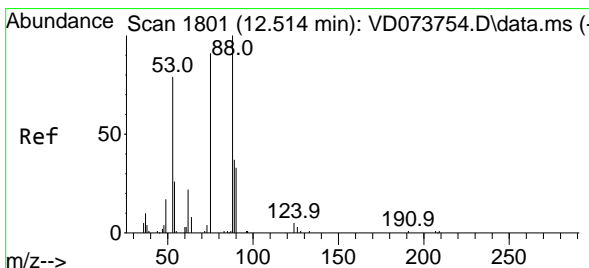
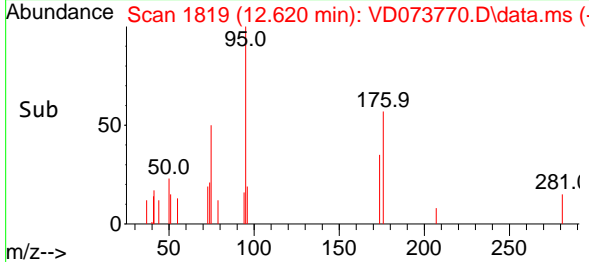
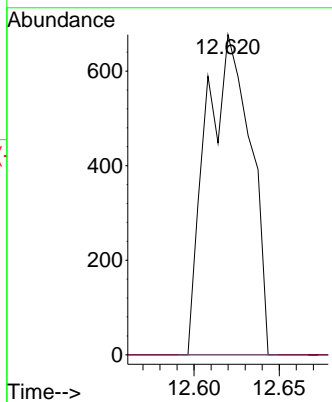
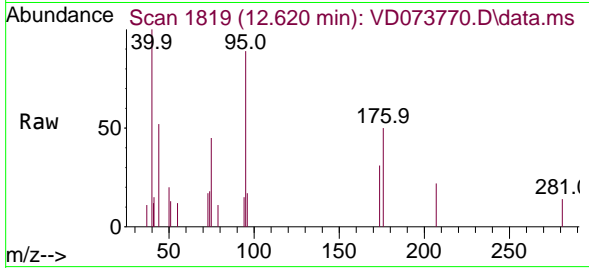




#76
 1,2,3-Trichloropropane
 Concen: 79.632 ug/l
 RT: 12.620 min Scan# 1819
 Delta R.T. -0.147 min
 Lab File: VD073770.D
 Acq: 01 Jul 2022 18:08

Instrument : MSVOA_D
 ClientSampleId : SB-10A

Tgt Ion: 75 Resp: 1226
 Ion Ratio Lower Upper
 75 100
 77 0.0 195.3 586.0#



#81
 trans-1,4-Dichloro-2-butene
 Concen: 153.621 ug/l
 RT: 12.620 min Scan# 1819
 Delta R.T. 0.106 min
 Lab File: VD073770.D
 Acq: 01 Jul 2022 18:08

Tgt Ion: 75 Resp: 1226
 Ion Ratio Lower Upper
 75 100
 53 0.0 77.0 115.6#
 89 0.0 37.8 56.8#

