

Data Path : Z:\VOASRV\HPCHEM1\MSVOA D\DATA\VD081319\
 Data File : VD063529.D
 Acq On : 13 Aug 2019 16:09
 Operator : JC/SY
 Sample : K4295-03
 Misc : 5.18g/5ml/MSVOA D/SOIL
 ALS Vial : 17 Sample Multiplier: 1

Instrument :
 MSVOA_D
 ClientSampleId :
 PX-03_080919

Integration Parameters: RTEINT.P

Integrator: RTE
 Smoothing : ON
 Sampling : 1
 Start Thrs: 0.2
 Stop Thrs : 0

Filtering: 5
 Min Area: 3 % of largest Peak
 Max Peaks: 100
 Peak Location: TOP

If leading or trailing edge < 100 prefer < Baseline drop else tangent >
 Peak separation: 5

Method : Z:\VOASRV\HPCHEM1\MSVOA_D\METHOD\82D080919S.M
 Title : SW846 8260

Signal : TIC

peak #	R.T. min	first scan	max scan	last scan	PK TY	peak height	corr. area	corr. % max.	% of total
1	1.483	3	6	23	rVB	970826	2945609	72.93%	10.807%
2	3.816	239	243	252	rBV	37013	101704	2.52%	0.373%
3	6.937	551	560	566	rBV	588770	1702178	42.14%	6.245%
4	7.045	566	571	588	rVB	1108752	3220075	79.72%	11.814%
5	7.459	607	613	624	rBV	429074	1123928	27.83%	4.124%
6	8.227	684	691	707	rBV	1524399	3796764	94.00%	13.930%
7	10.412	908	913	927	rBV	1178325	2701558	66.89%	9.912%
8	11.229	992	996	1002	rBV4	14020	40792	1.01%	0.150%
9	12.371	1108	1112	1123	rBV	2577455	4038994	100.00%	14.819%
10	13.562	1229	1233	1241	rBV	1682853	2372486	58.74%	8.705%
11	13.720	1246	1249	1253	rVB2	29024	50220	1.24%	0.184%
12	14.517	1327	1330	1336	rBV	2807596	3721185	92.13%	13.653%
13	14.812	1357	1360	1364	rBV3	37807	80417	1.99%	0.295%
14	14.891	1365	1368	1371	rVV	46475	69105	1.71%	0.254%
15	15.039	1375	1383	1387	rBV9	15213	56865	1.41%	0.209%
16	15.226	1398	1402	1405	rVB5	24223	45861	1.14%	0.168%
17	15.285	1405	1408	1410	rBV3	40230	63527	1.57%	0.233%
18	15.324	1410	1412	1417	rVB5	24104	43861	1.09%	0.161%
19	15.433	1420	1423	1426	rVB2	60210	82577	2.04%	0.303%
20	15.649	1442	1445	1449	rBV3	52943	100277	2.48%	0.368%
21	15.748	1453	1455	1457	rVV3	50743	75032	1.86%	0.275%
22	15.816	1460	1462	1467	rVB5	42315	79235	1.96%	0.291%
23	15.944	1471	1475	1477	rBV4	20113	44283	1.10%	0.162%
24	16.033	1482	1484	1487	rVV4	30178	72134	1.79%	0.265%
25	16.151	1491	1496	1499	rBV3	92839	154735	3.83%	0.568%
26	16.230	1499	1504	1506	rBV6	38021	90734	2.25%	0.333%
27	16.319	1509	1513	1516	rVB5	42740	86030	2.13%	0.316%
28	16.387	1516	1520	1521	rBV3	20149	46062	1.14%	0.169%
29	16.624	1542	1544	1549	rVV5	30612	71788	1.78%	0.263%
30	16.732	1553	1555	1558	rVB4	27031	43810	1.08%	0.161%
31	17.047	1585	1587	1593	rVB5	20747	41036	1.02%	0.151%
32	17.254	1604	1608	1611	rBV3	43335	92777	2.30%	0.340%

Data Path : Z:\VOASRV\HPCHEM1\MSVOA D\DATA\VD081319\
Data File : VD063529.D
Acq On : 13 Aug 2019 16:09
Operator : JC/SY
Sample : K4295-03
Misc : 5.18g/5ml/MSVOA D/SOIL
ALS Vial : 17 Sample Multiplier: 1

Instrument :
MSVOA_D
ClientSampleID :
PX-03_080919

Integration Parameters: RTEINT.P
Integrator: RTE
Smoothing : ON Filtering: 5
Sampling : 1 Min Area: 3 % of largest Peak
Start Thrs: 0.2 Max Peaks: 100
Stop Thrs : 0 Peak Location: TOP

If leading or trailing edge < 100 prefer < Baseline drop else tangent >
Peak separation: 5

Method : Z:\VOASRV\HPCHEM1\MSVOA_D\METHOD\82D080919S.M
Title : SW846 8260

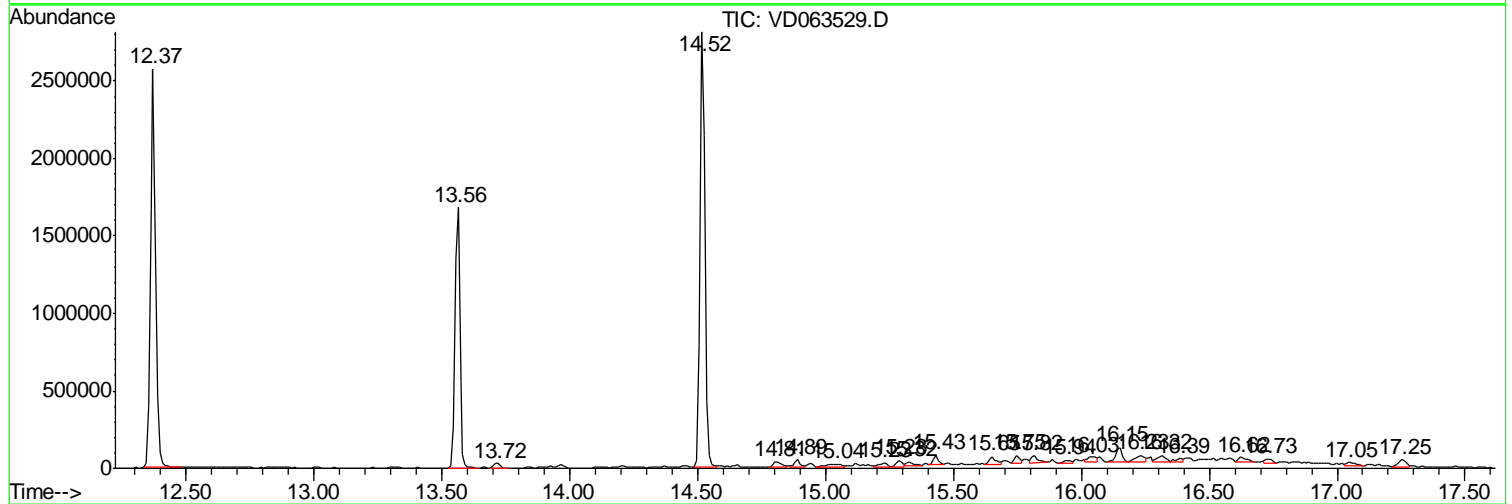
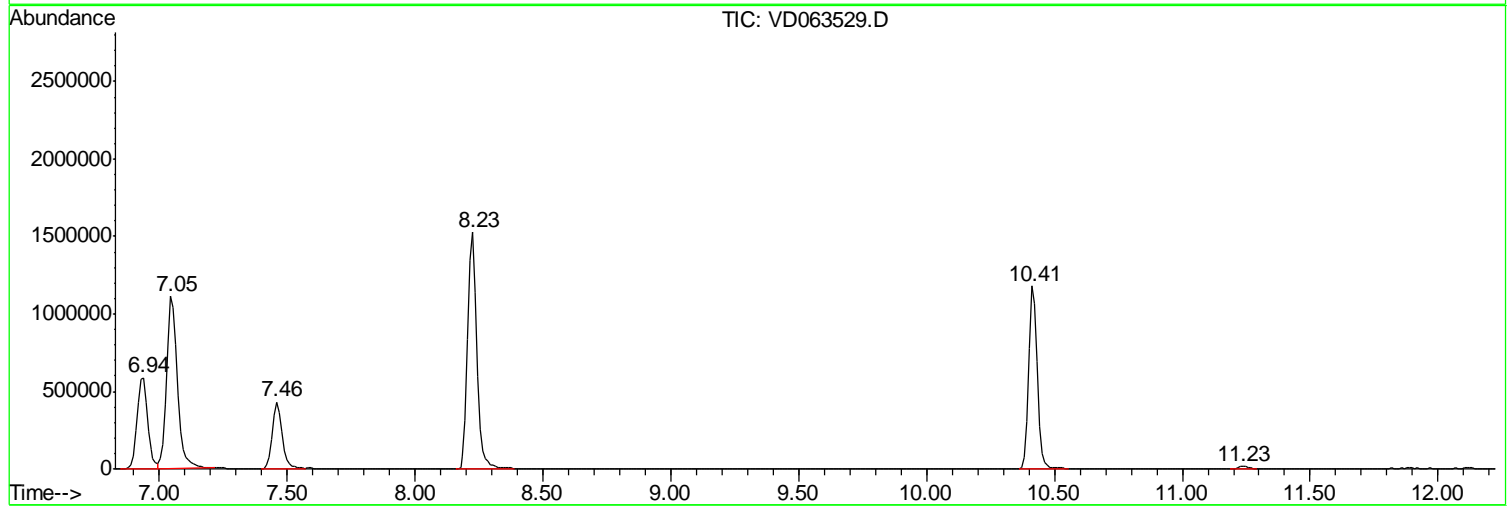
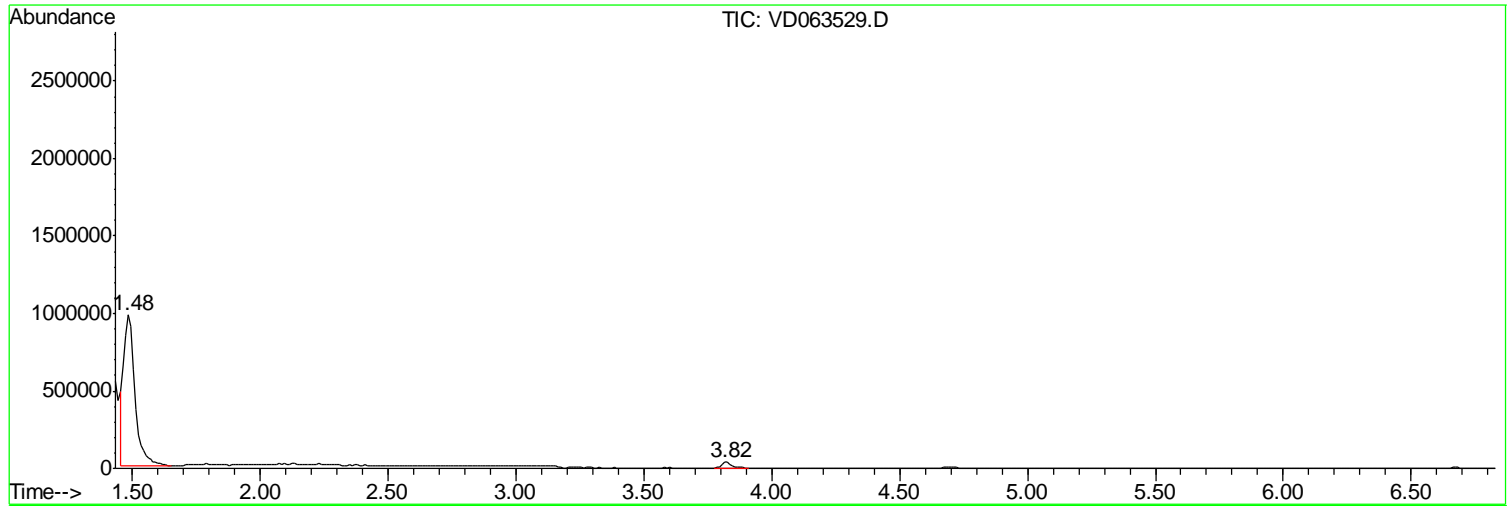
Sum of corrected areas: 27255639

Data Path : Z:\VOASRV\HPCHEM1\MSVOA D\DATA\VD081319\
 Data File : VD063529.D
 Acq On : 13 Aug 2019 16:09
 Operator : JC/SY
 Sample : K4295-03
 Misc : 5.18g/5ml/MSVOA D/SOIL
 ALS Vial : 17 Sample Multiplier: 1

Instrument :
 MSVOA_D
 ClientSampleId :
 PX-03_080919

Quant Method : Z:\VOASRV\HPCHEM1\MSVOA_D\METHOD\82D080919S.M
 Quant Title : SW846 8260

TIC Library : C:\DATABASE\NIST11.L
 TIC Integration Parameters: LSCINT.P



Data Path : Z:\VOASRV\HPCHEM1\MSVOA_D\DATA\VD081319\
Data File : VD063529.D
Acq On : 13 Aug 2019 16:09
Operator : JC/SY
Sample : K4295-03
Misc : 5.18g/5ml/MSVOA_D/SOIL
ALS Vial : 17 Sample Multiplier: 1

Instrument :
MSVOA_D
ClientSampleId :
PX-03_080919

Quant Method : Z:\VOASRV\HPCHEM1\MSVOA_D\METHOD\82D080919S.M
Quant Title : SW846 8260

TIC Library : C:\DATABASE\NIST11.L
TIC Integration Parameters: LSCINT.P

No Library Search Compounds Detected

Data Path : Z:\VOASRV\HPCHEM1\MSVOA_D\DATA\VD081319\
Data File : VD063529.D
Acq On : 13 Aug 2019 16:09
Operator : JC/SY
Sample : K4295-03
Misc : 5.18g/5ml/MSVOA_D/SOIL
ALS Vial : 17 Sample Multiplier: 1

Instrument :
MSVOA_D
ClientSampleId :
PX-03_080919

Quant Method : Z:\VOASRV\HPCHEM1\MSVOA_D\METHOD\82D080919S.M
Quant Title : SW846 8260

TIC Library : C:\DATABASE\NIST11.L
TIC Integration Parameters: LSCINT.P

TIC Top Hit name	RT	EstConc	Units	Response	--Internal Standard--			
					#	RT	Resp	Conc
