

Data Path : Z:\VOASRV\HPCHEM1\MSVOA D\DATA\VD081319\
 Data File : VD063554.D
 Acq On : 14 Aug 2019 5:17
 Operator : JC/SY
 Sample : K4324-03
 Misc : 5.34g/5ml/MSVOA D/SOIL
 ALS Vial : 46 Sample Multiplier: 1

Instrument :
 MSVOA_D
 ClientSampleId :
 T8-F1-(4)

Integration Parameters: RTEINT.P

Integrator: RTE
 Smoothing : ON
 Sampling : 1
 Start Thrs: 0.2
 Stop Thrs : 0

Filtering: 5
 Min Area: 3 % of largest Peak
 Max Peaks: 100
 Peak Location: TOP

If leading or trailing edge < 100 prefer < Baseline drop else tangent >
 Peak separation: 5

Method : Z:\VOASRV\HPCHEM1\MSVOA_D\METHOD\82D080919S.M
 Title : SW846 8260

Signal : TIC

peak #	R.T. min	first scan	max scan	last scan	PK TY	peak height	corr. area	corr. % max.	% of total
1	2.117	68	70	75	rVB2	9830	22644	2.83%	0.383%
2	3.229	178	183	191	rBV	88723	217310	27.13%	3.675%
3	3.820	239	243	250	rVB4	7897	23662	2.95%	0.400%
4	4.007	256	262	267	rBV2	16112	51135	6.38%	0.865%
5	6.183	476	483	489	rBV2	50015	175877	21.96%	2.974%
6	6.941	553	560	566	rBV	176194	514504	64.24%	8.700%
7	7.049	566	571	579	rVB	215645	603072	75.30%	10.198%
8	7.462	607	613	621	rBV	178554	473705	59.15%	8.010%
9	8.220	685	690	701	rBV	310293	800885	100.00%	13.543%
10	10.416	908	913	920	rBV	305276	641242	80.07%	10.843%
11	12.375	1107	1112	1120	rBV	479899	800662	99.97%	13.539%
12	13.556	1229	1232	1238	rVB	305637	454141	56.70%	7.679%
13	14.521	1327	1330	1336	rVB	483868	569855	71.15%	9.636%
14	15.289	1403	1408	1411	rBV2	11412	20056	2.50%	0.339%
15	15.397	1416	1419	1422	rVB	12428	17297	2.16%	0.292%
16	15.820	1457	1462	1465	rBV4	17766	33180	4.14%	0.561%
17	15.889	1465	1469	1471	rVV2	12937	17327	2.16%	0.293%
18	15.929	1471	1473	1474	rBV2	15486	19893	2.48%	0.336%
19	15.958	1474	1476	1478	rVB2	15008	20781	2.59%	0.351%
20	16.145	1491	1495	1497	rBV3	22601	36666	4.58%	0.620%
21	16.204	1499	1501	1506	rVB5	29316	48505	6.06%	0.820%
22	16.381	1517	1519	1526	rVB7	24127	66161	8.26%	1.119%
23	16.490	1526	1530	1532	rBV5	25697	58452	7.30%	0.988%
24	16.628	1541	1544	1545	rBV3	12955	21605	2.70%	0.365%
25	16.667	1545	1548	1549	rVV3	15712	25692	3.21%	0.434%
26	16.716	1549	1553	1557	rVB7	13890	35247	4.40%	0.596%
27	16.992	1578	1581	1582	rBV3	9467	19065	2.38%	0.322%
28	17.041	1584	1586	1591	rVV6	27773	55792	6.97%	0.943%
29	17.149	1594	1597	1602	rVB6	12936	32794	4.09%	0.555%
30	17.258	1605	1608	1612	rBV4	16924	36503	4.56%	0.617%

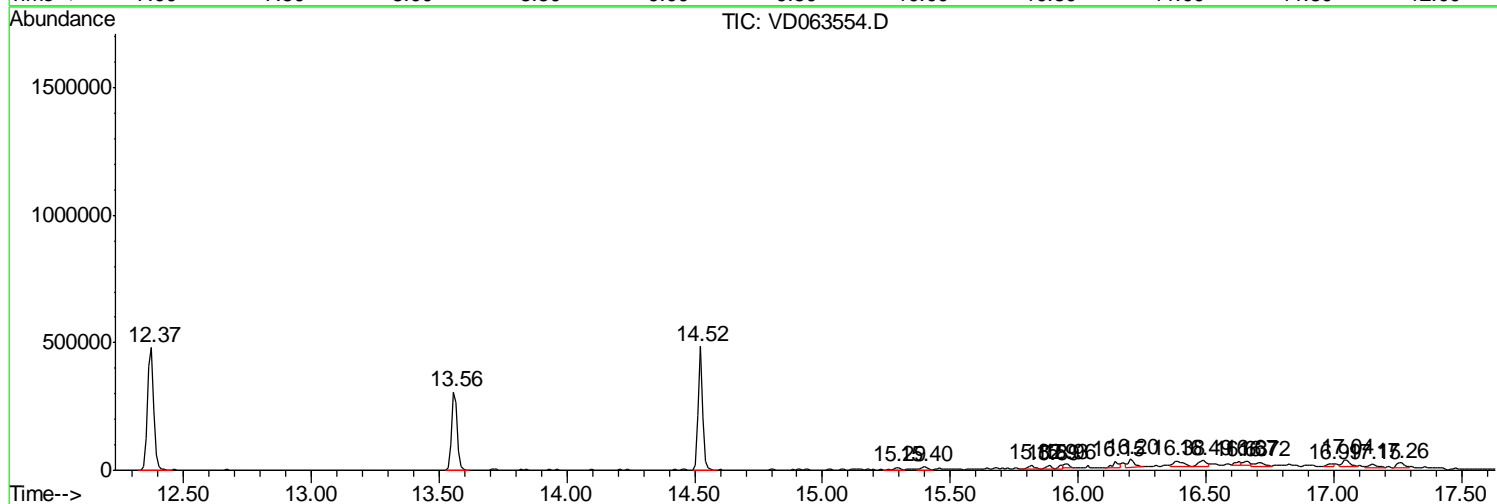
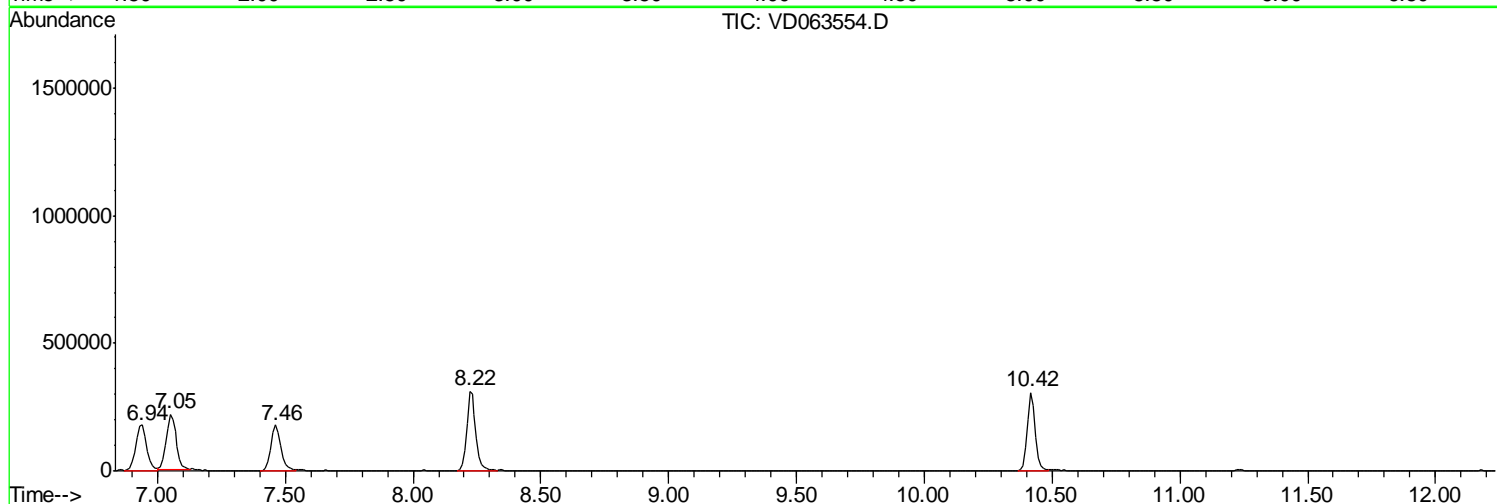
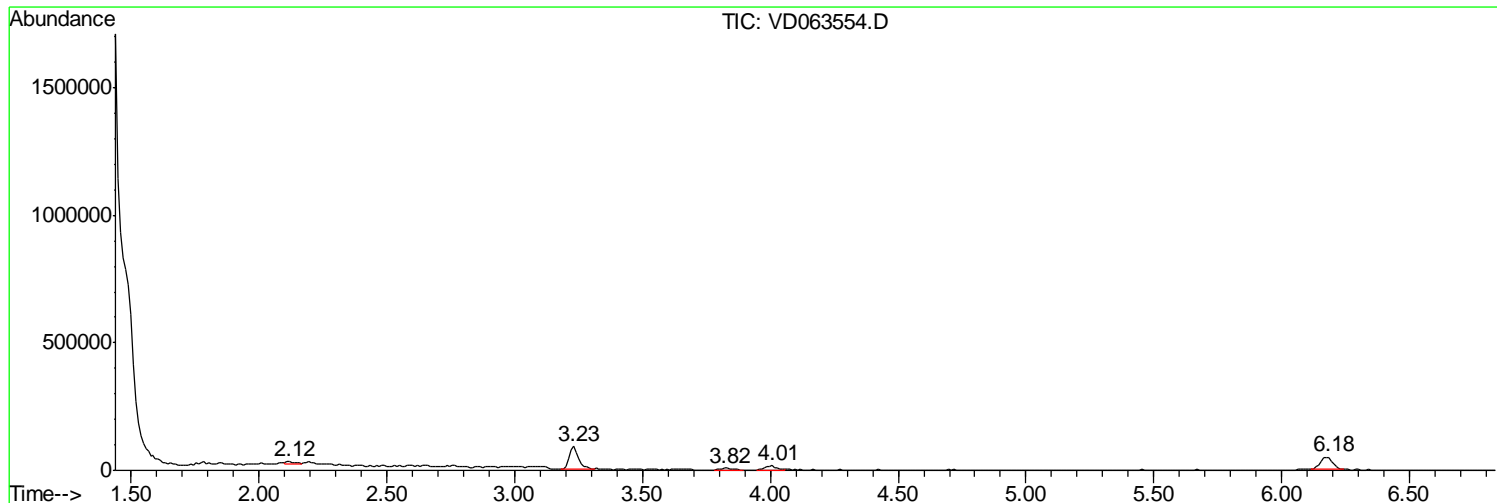
Sum of corrected areas: 5913710

Data Path : Z:\VOASRV\HPCHEM1\MSVOA D\DATA\VD081319\
 Data File : VD063554.D
 Acq On : 14 Aug 2019 5:17
 Operator : JC/SY
 Sample : K4324-03
 Misc : 5.34g/5ml/MSVOA D/SOIL
 ALS Vial : 46 Sample Multiplier: 1

Instrument :
 MSVOA_D
 ClientSampleId :
 T8-F1-(4)

Quant Method : Z:\VOASRV\HPCHEM1\MSVOA_D\METHOD\82D080919S.M
 Quant Title : SW846 8260

TIC Library : C:\DATABASE\NIST11.L
 TIC Integration Parameters: LSCINT.P



Data Path : Z:\VOASRV\HPCHEM1\MSVOA D\DATA\VD081319\
 Data File : VD063554.D
 Acq On : 14 Aug 2019 5:17
 Operator : JC/SY
 Sample : K4324-03
 Misc : 5.34µ/5ml/MSVOA D/SOIL
 ALS Vial : 46 Sample Multiplier: 1

Instrument :
 MSVOA_D
 ClientSampleID :
 T8-F1-(4)

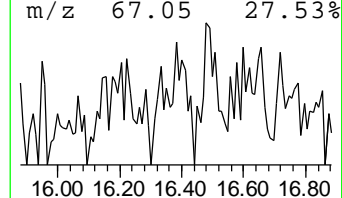
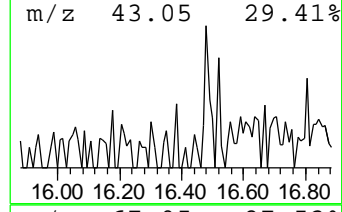
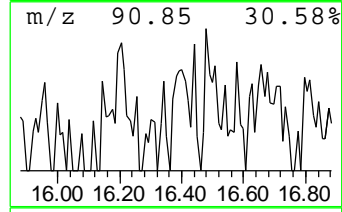
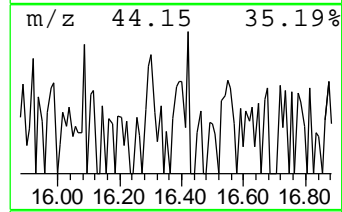
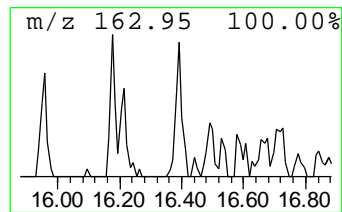
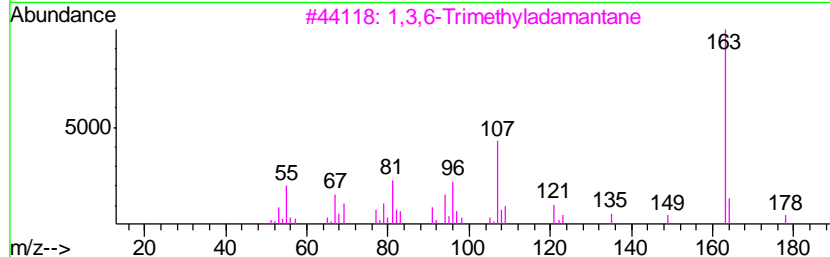
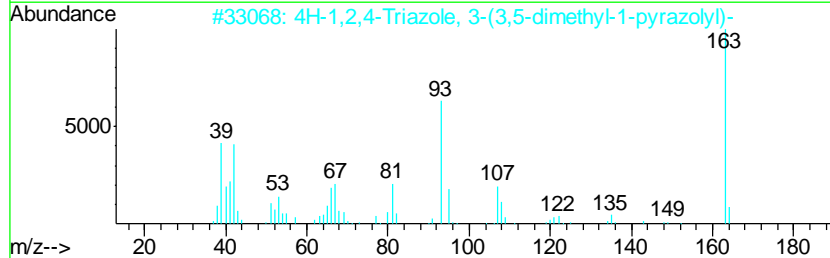
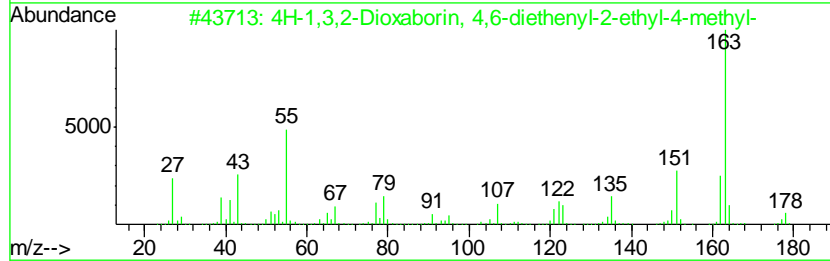
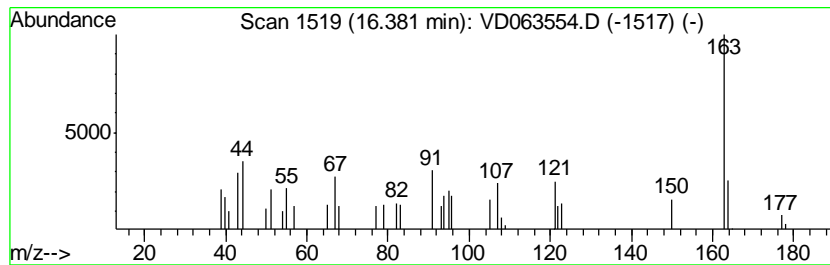
Quant Method : Z:\VOASRV\HPCHEM1\MSVOA_D\METHOD\82D080919S.M
 Quant Title : SW846 8260

TIC Library : C:\DATABASE\NIST11.L
 TIC Integration Parameters: LSCINT.P

 Peak Number 2 unknown16.38 Concentration Rank 2

R.T.	EstConc	Area	Relative to ISTD	R.T.
16.38	5.81 ug/l	66161	1,4-Dichlorobenzene-d4	14.52

Hit#	of	Tentative ID	MW	MolForm	CAS#	Qual
1	5	4H-1,3,2-Dioxaborin, 4,6-diethen...	178	C10H15BO2	074630-03-8	43
2		4H-1,2,4-Triazole, 3-(3,5-dimeth...	163	C7H9N5	003310-78-9	40
3		1,3,6-Trimethyladamantane	178	C13H22	024139-37-5	35
4		Ethanone, 1-(2,3-dihydro-1,4-ben...	178	C10H10O3	002879-20-1	23
5		1-(2,3-Dihydro-benzo[1,4]dioxin-...	355	C17H13N3O4S	1000300-15-0	23



Data Path : Z:\VOASRV\HPCHEM1\MSVOA D\DATA\VD081319\
 Data File : VD063554.D
 Acq On : 14 Aug 2019 5:17
 Operator : JC/SY
 Sample : K4324-03
 Misc : 5.34µ/5ml/MSVOA D/SOIL
 ALS Vial : 46 Sample Multiplier: 1

Instrument :
 MSVOA_D
 ClientSampled :
 T8-F1-(4)

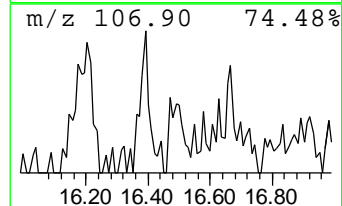
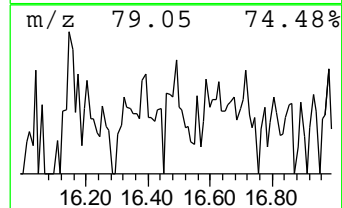
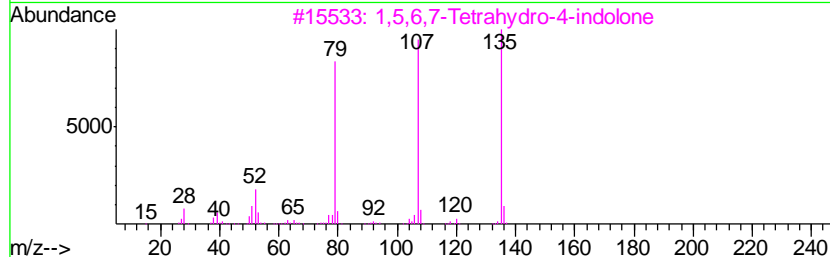
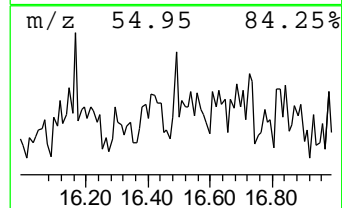
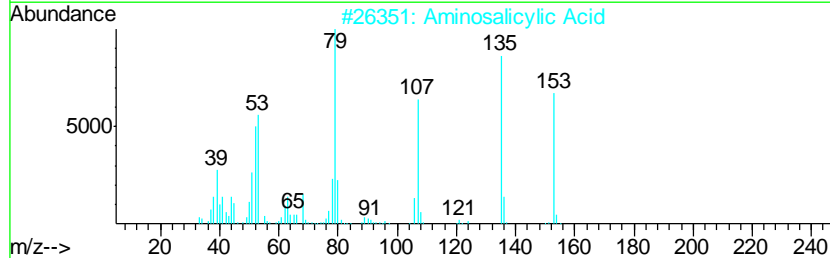
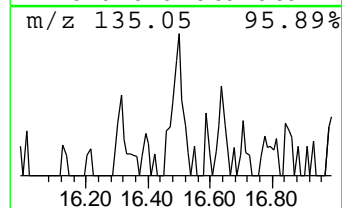
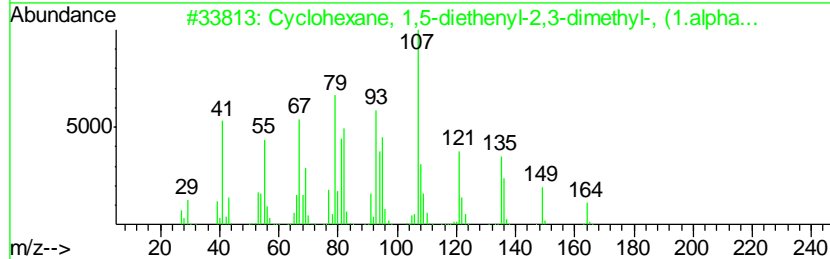
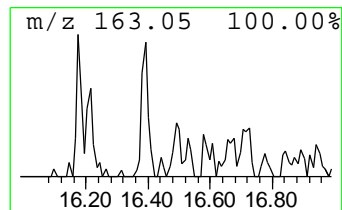
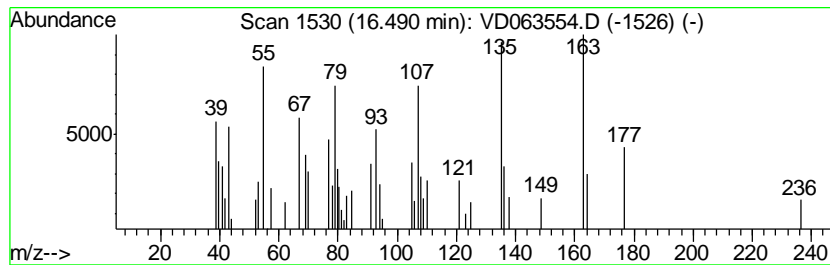
Quant Method : Z:\VOASRV\HPCHEM1\MSVOA_D\METHOD\82D080919S.M
 Quant Title : SW846 8260

TIC Library : C:\DATABASE\NIST11.L
 TIC Integration Parameters: LSCINT.P

 Peak Number 3 unknown16.49 Concentration Rank 3

R.T.	EstConc	Area	Relative to ISTD	R.T.
16.49	5.13 ug/l	58452	1,4-Dichlorobenzene-d4	14.52

Hit#	of	Tentative ID	MW	MolForm	CAS#	Qual
1	5	Cyclohexane, 1,5-diethenyl-2,3-d...	164	C12H20	068779-14-6	45
2		Aminosalicylic Acid	153	C7H7NO3	000065-49-6	38
3		1,5,6,7-Tetrahydro-4-indolone	135	C8H9NO	013754-86-4	38
4		(Chroman-7-yl)methylamine	163	C10H13NO	1000306-69-6	35
5		2-Hydroxymethyl-2-methylbrendane	166	C11H18O	1000139-74-2	27



Data Path : Z:\VOASRV\HPCHEM1\MSVOA_D\DATA\VD081319\
Data File : VD063554.D
Acq On : 14 Aug 2019 5:17
Operator : JC/SY
Sample : K4324-03
Misc : 5.34g/5ml/MSVOA_D/SOIL
ALS Vial : 46 Sample Multiplier: 1

Instrument :
MSVOA_D
ClientSampleId :
T8-F1-(4)

Quant Method : Z:\VOASRV\HPCHEM1\MSVOA_D\METHOD\82D080919S.M
Quant Title : SW846 8260

TIC Library : C:\DATABASE\NIST11.L
TIC Integration Parameters: LSCINT.P

TIC Top Hit name	RT	EstConc	Units	Response	--Internal Standard--			
					#	RT	Resp	Conc
unknown16.38	16.38	5.8	ug/l	66161	4	14.52	569855	50.0
unknown16.49	16.49	5.1	ug/l	58452	4	14.52	569855	50.0