

Data Path : Z:\voasrv\HPCHEM1\MSVOA_D\Data\VD081621\
 Data File : VD070071.D
 Acq On : 16 Aug 2021 17:17
 Operator : VA/SY
 Sample : M3343-09
 Misc : 5.10G/5.00ml/MSVOA_D/SOIL
 ALS Vial : 12 Sample Multiplier: 1

Instrument :
 MSVOA_D
 ClientSampleId :
 20210591-AMENDED-COM-5

Integration Parameters: RTEINT.P
 Integrator: RTE
 Smoothing : ON
 Sampling : 1
 Start Thrs : 0.2
 Stop Thrs : 0
 Filtering: 5
 Min Area: 3 % of largest Peak
 Max Peaks: 100
 Peak Location: TOP

If leading or trailing edge < 100 prefer < Baseline drop else tangent >
 Peak separation: 5

Method : Z:\voasrv\HPCHEM1\MSVOA_D\Method\82D081321S.M
 Title : SW846 8260

Signal : TIC: VD070071.D\data.ms

peak #	R.T. min	first scan	max scan	last scan	PK TY	peak height	corr. area	corr. % max.	% of total
1	2.314	62	67	70	rBV	20388	35997	1.20%	0.166%
2	2.491	91	97	105	rBV	107193	182894	6.11%	0.841%
3	2.679	126	129	140	rBV	131804	289514	9.67%	1.332%
4	4.155	371	380	385	rBV	96545	264802	8.85%	1.218%
5	4.238	385	394	412	rVV	1092863	2993599	100.00%	13.773%
6	4.408	412	423	434	rVB	200249	564343	18.85%	2.596%
7	4.967	505	518	533	rBV3	46250	157886	5.27%	0.726%
8	5.997	682	693	701	rBV6	14870	45189	1.51%	0.208%
9	6.938	844	853	863	rBV6	18167	56419	1.88%	0.260%
10	7.202	888	898	908	rBV4	33274	103083	3.44%	0.474%
11	7.914	1007	1019	1024	rBV2	304919	732464	24.47%	3.370%
12	7.979	1024	1030	1040	rVB	607056	1349270	45.07%	6.208%
13	8.326	1076	1089	1101	rBV	377741	869878	29.06%	4.002%
14	8.861	1170	1180	1195	rBV	1052306	2082420	69.56%	9.581%
15	9.043	1206	1211	1217	rBV	35022	68684	2.29%	0.316%
16	9.902	1350	1357	1363	rBV4	13993	30472	1.02%	0.140%
17	10.338	1423	1431	1445	rBV	1620954	2932048	97.94%	13.490%
18	11.079	1553	1557	1562	rBV4	25655	40908	1.37%	0.188%
19	11.637	1644	1652	1661	rBV	1375363	2339902	78.16%	10.765%
20	11.832	1679	1685	1689	rBV5	16479	33130	1.11%	0.152%
21	11.884	1689	1694	1705	rVB6	26862	70410	2.35%	0.324%
22	12.143	1731	1738	1745	rBV8	28635	78061	2.61%	0.359%
23	12.255	1750	1757	1763	rVB3	59076	129423	4.32%	0.595%
24	12.373	1763	1777	1783	rBV5	90808	296868	9.92%	1.366%
25	12.461	1783	1792	1797	rBV7	38795	102128	3.41%	0.470%
26	12.626	1810	1820	1826	rVB2	939710	1723292	57.57%	7.928%
27	12.708	1826	1834	1839	rBV7	49864	128687	4.30%	0.592%
28	12.761	1839	1843	1844	rBV4	37502	42347	1.41%	0.195%
29	12.873	1854	1862	1864	rBV5	58260	118919	3.97%	0.547%
30	12.979	1869	1880	1890	rVB2	142724	417347	13.94%	1.920%
31	13.067	1890	1895	1896	rBV2	38234	55764	1.86%	0.257%
32	13.131	1903	1906	1910	rBV4	28325	40455	1.35%	0.186%
33	13.202	1911	1918	1925	rVB2	103233	225443	7.53%	1.037%
34	13.308	1932	1936	1940	rVB2	53689	81112	2.71%	0.373%
35	13.420	1946	1955	1960	rBV	210803	436769	14.59%	2.009%
36	13.567	1973	1980	1985	rBV	953256	1656731	55.34%	7.622%

Data Path : Z:\voasrv\HPCHEM1\MSVOA_D\Data\VD081621\
 Data File : VD070071.D
 Acq On : 16 Aug 2021 17:17
 Operator : VA/SY
 Sample : M3343-09
 Misc : 5.10G/5.00ml/MSVOA_D/SOIL
 ALS Vial : 12 Sample Multiplier: 1

Instrument :
 MSVOA_D
 ClientSampleId :
 20210591-AMENDED-COM-5

Integration Parameters: RTEINT.P
 Integrator: RTE
 Smoothing : ON Filtering: 5
 Sampling : 1 Min Area: 3 % of largest Peak
 Start Thrs: 0.2 Max Peaks: 100
 Stop Thrs : 0 Peak Location: TOP

If leading or trailing edge < 100 prefer < Baseline drop else tangent >
 Peak separation: 5

Method : Z:\voasrv\HPCHEM1\MSVOA_D\Method\82D081321S.M
 Title : SW846 8260

37	13.614	1985	1988	1993	rVB2	129259	212287	7.09%	0.977%
38	13.702	2001	2003	2007	rVB4	30899	39845	1.33%	0.183%
39	13.773	2009	2015	2020	rVB6	42202	80979	2.71%	0.373%
40	13.878	2030	2033	2039	rBV7	46053	77264	2.58%	0.355%
41	14.084	2064	2068	2073	rVV3	64802	111248	3.72%	0.512%
42	14.137	2073	2077	2084	rVB2	92568	166419	5.56%	0.766%
43	14.273	2097	2100	2107	rVB8	31267	55022	1.84%	0.253%
44	14.390	2116	2120	2124	rBV6	36423	56984	1.90%	0.262%
45	14.531	2136	2144	2147	rBV9	48319	127504	4.26%	0.587%
46	15.761	2348	2353	2360	rBV10	16466	31527	1.05%	0.145%

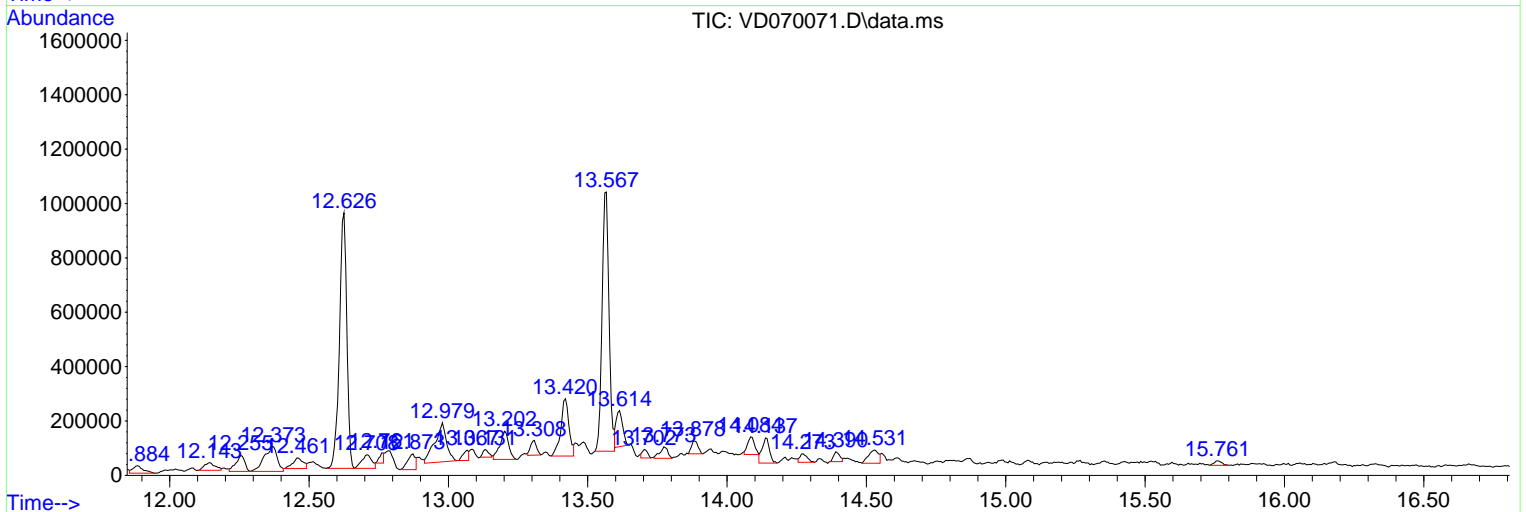
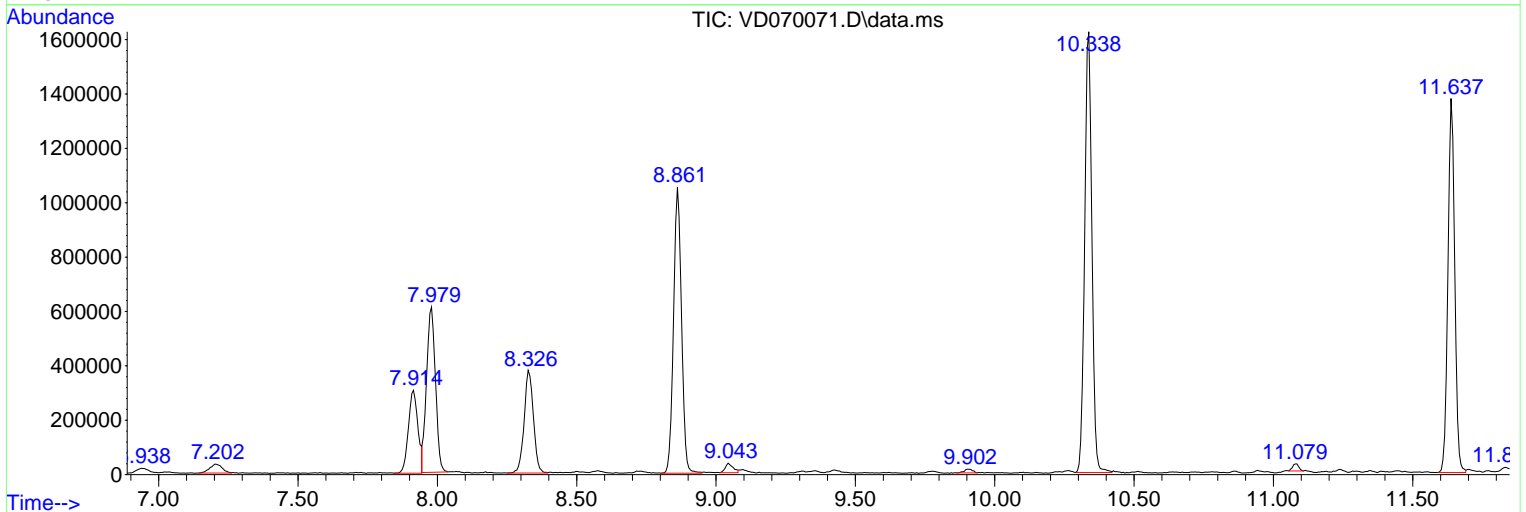
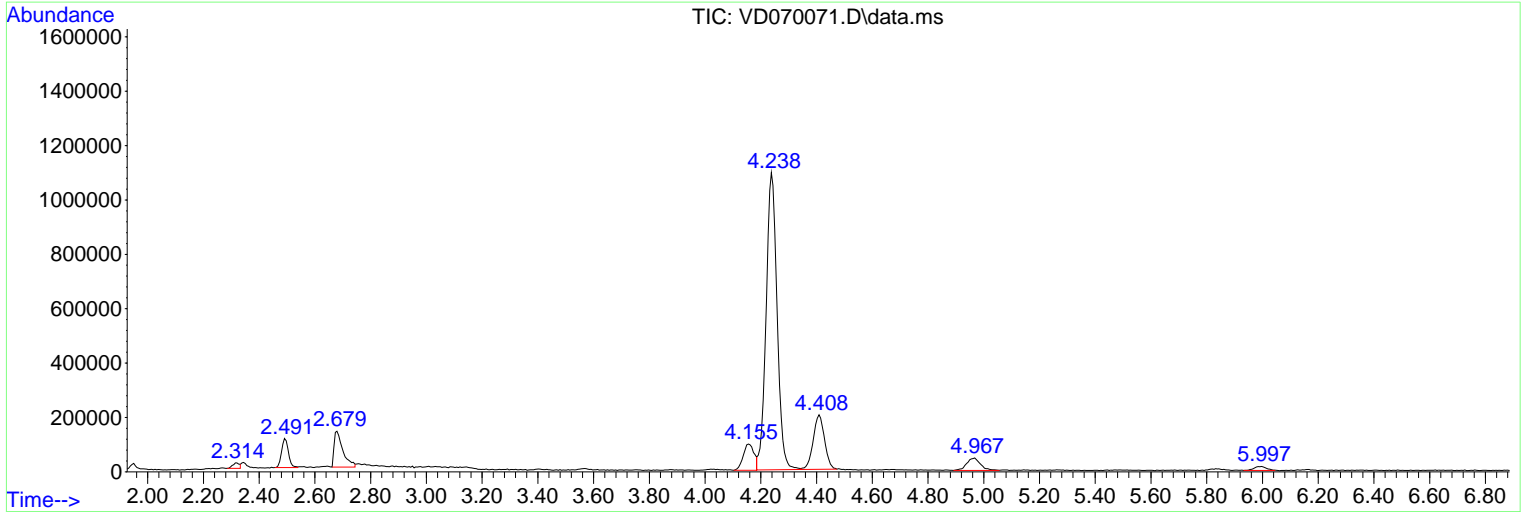
Sum of corrected areas: 21735737

Data Path : Z:\voasrv\HPCHEM1\MSVOA_D\Data\VD081621\
 Data File : VD070071.D
 Acq On : 16 Aug 2021 17:17
 Operator : VA/SY
 Sample : M3343-09
 Misc : 5.10G/5.00ml/MSVOA_D/SOIL
 ALS Vial : 12 Sample Multiplier: 1

Instrument :
 MSVOA_D
 ClientSampleId :
 20210591-AMENDED-COM-5

Quant Method : Z:\voasrv\HPCHEM1\MSVOA_D\Method\82D081321S.M
 Quant Title : SW846 8260

TIC Library : C:\Database\NIST20.L
 TIC Integration Parameters: LSCINT.P



Data Path : Z:\voasrv\HPCHEM1\MSVOA_D\Data\VD081621\
 Data File : VD070071.D
 Acq On : 16 Aug 2021 17:17
 Operator : VA/SY
 Sample : M3343-09
 Misc : 5.10G/5.00ml/MSVOA_D/SOIL
 ALS Vial : 12 Sample Multiplier: 1

Instrument :
 MSVOA_D
 ClientSampleId :
 20210591-AMENDED-COM-5

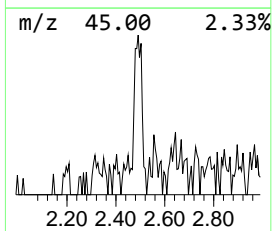
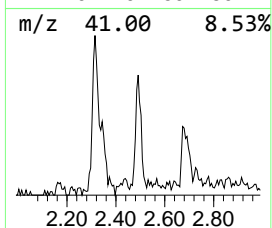
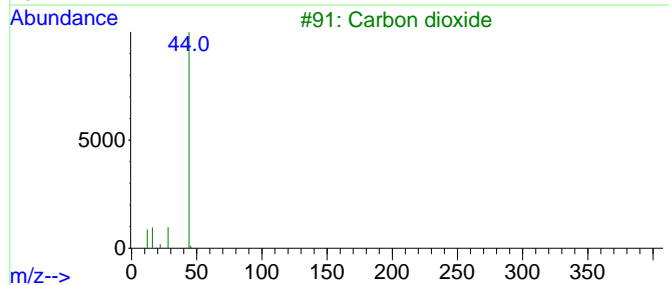
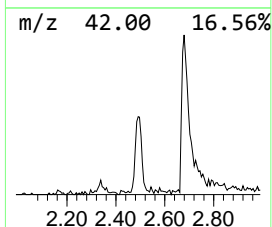
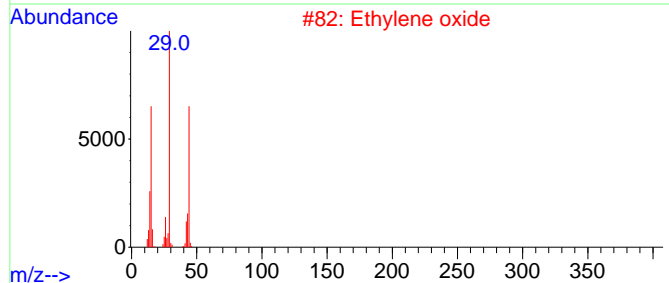
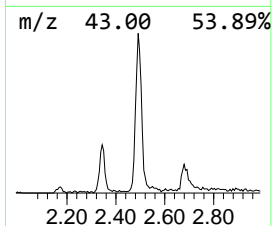
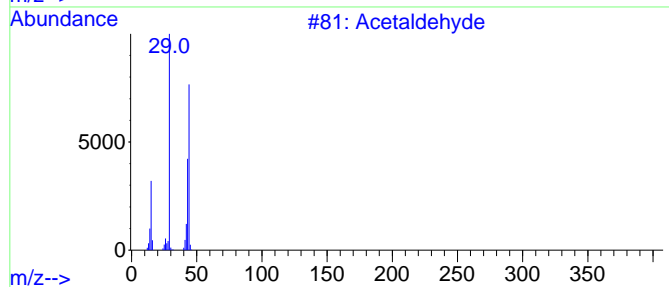
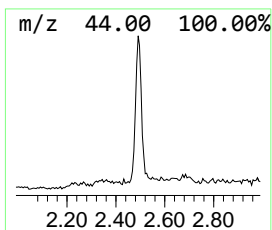
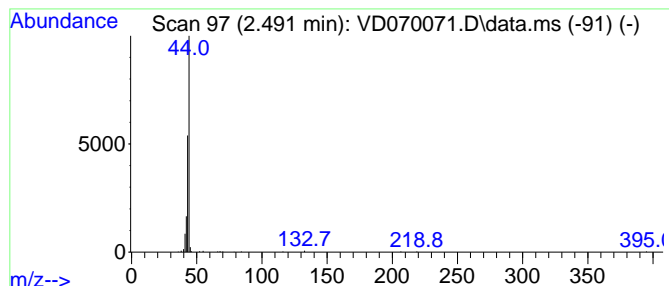
Quant Method : Z:\voasrv\HPCHEM1\MSVOA_D\Method\82D081321S.M
 Quant Title : SW846 8260

TIC Library : C:\Database\NIST20.L
 TIC Integration Parameters: LSCINT.P

 Peak Number 1 Acetaldehyde Concentration Rank 6

R.T.	EstConc	Area	Relative to ISTD	R.T.
2.491	6.78 ug/l	182894	Pentafluorobenzene	7.979

Hit#	of 5	Tentative ID	MW	MolForm	CAS#	Qual
1		Acetaldehyde	44	C2H4O	000075-07-0	56
2		Ethylene oxide	44	C2H4O	000075-21-8	5
3		Carbon dioxide	44	CO2	000124-38-9	4
4		Propane	44	C3H8	000074-98-6	4
5		Acetic acid, 2-(methylaminoethyl...)	117	C5H11NO2	026921-43-7	4



Data Path : Z:\voasrv\HPCHEM1\MSVOA_D\Data\VD081621\
 Data File : VD070071.D
 Acq On : 16 Aug 2021 17:17
 Operator : VA/SY
 Sample : M3343-09
 Misc : 5.10G/5.00ml/MSVOA_D/SOIL
 ALS Vial : 12 Sample Multiplier: 1

Instrument :
 MSVOA_D
 ClientSampleId :
 20210591-AMENDED-COM-5

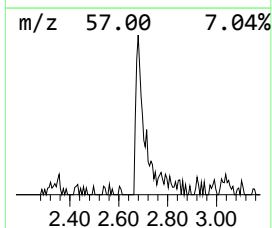
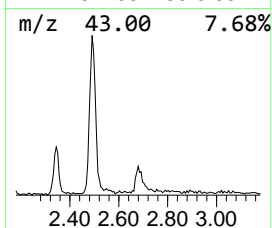
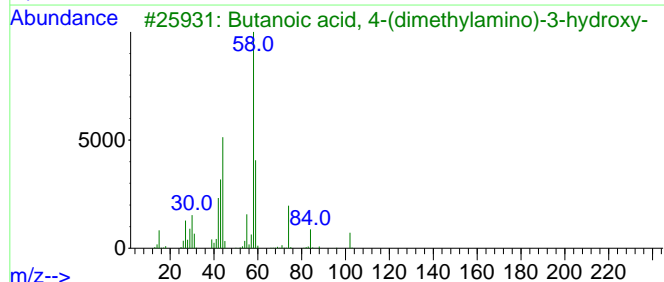
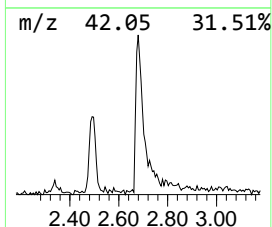
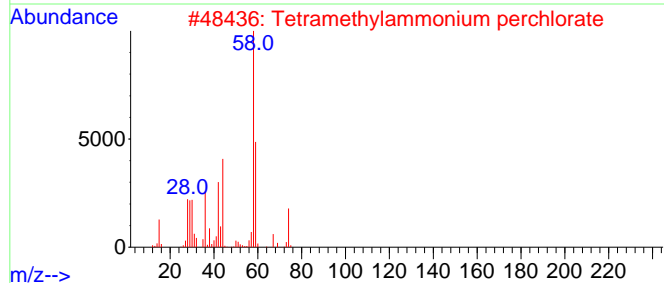
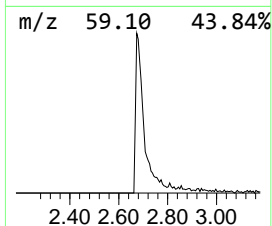
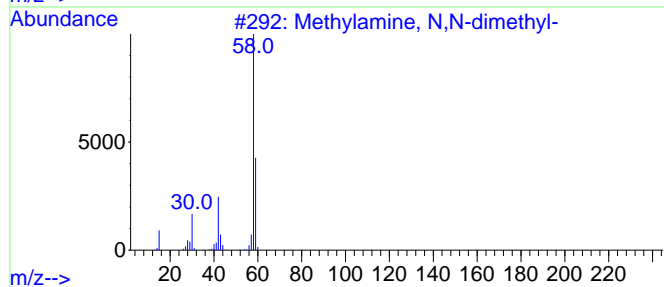
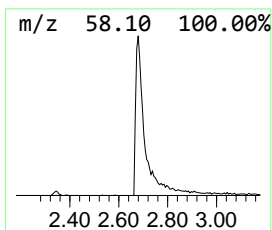
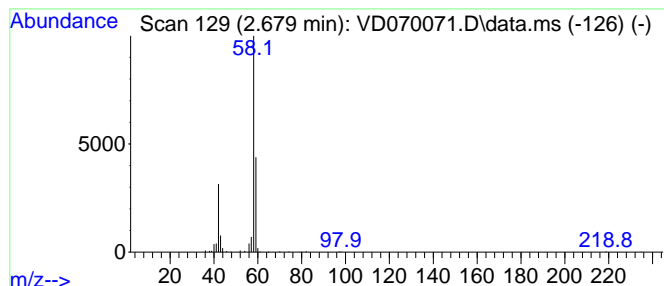
Quant Method : Z:\voasrv\HPCHEM1\MSVOA_D\Method\82D081321S.M
 Quant Title : SW846 8260

TIC Library : C:\Database\NIST20.L
 TIC Integration Parameters: LSCINT.P

 Peak Number 2 Methylamine, N,N-dimethyl- Concentration Rank 4

R.T.	EstConc	Area	Relative to ISTD	R.T.
2.679	10.73 ug/l	289514	Pentafluorobenzene	7.979

Hit#	of	5	Tentative ID	MW	MolForm	CAS#	Qual
1			Methylamine, N,N-dimethyl-	59	C3H9N	000075-50-3	86
2			Tetramethylammonium perchlorate	173	C4H12ClNO4	002537-36-2	43
3			Butanoic acid, 4-(dimethylamino)...	147	C6H13NO3	003688-46-8	43
4			Oxirane, 2,3-diethyl-	100	C6H12O	004468-66-0	43
5			Ethanamine, 2-hydrazino-N,N-dime...	117	C4H11N3O	000055-85-6	36



Data Path : Z:\voasrv\HPCHEM1\MSVOA_D\Data\VD081621\
 Data File : VD070071.D
 Acq On : 16 Aug 2021 17:17
 Operator : VA/SY
 Sample : M3343-09
 Misc : 5.10G/5.00ml/MSVOA_D/SOIL
 ALS Vial : 12 Sample Multiplier: 1

Instrument :
 MSVOA_D
 ClientSampleId :
 20210591-AMENDED-COM-5

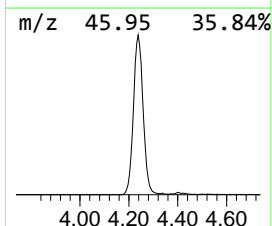
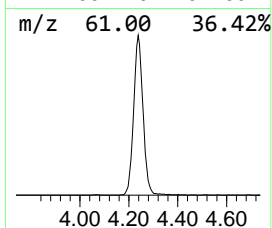
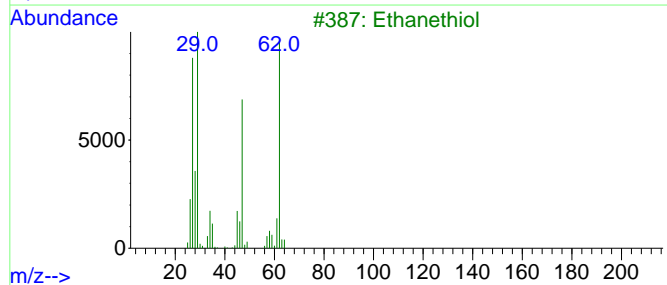
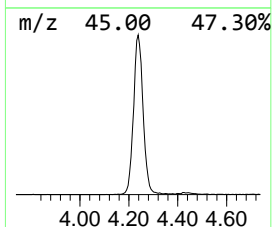
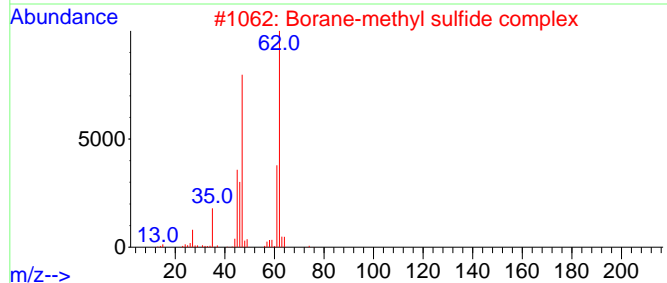
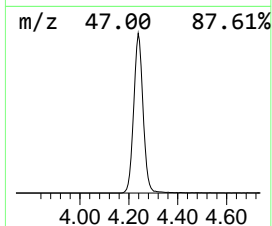
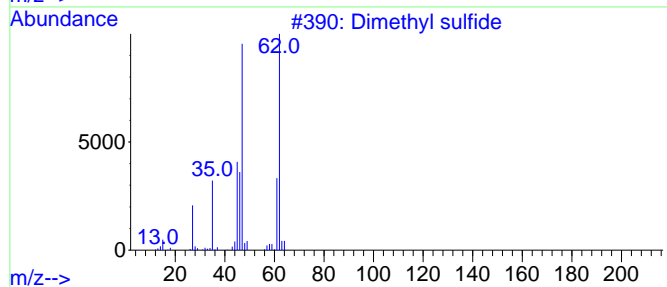
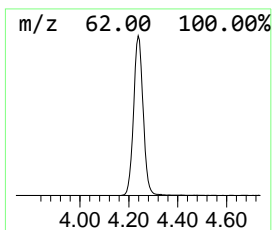
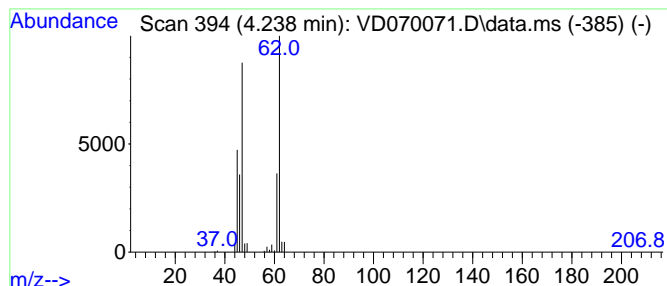
Quant Method : Z:\voasrv\HPCHEM1\MSVOA_D\Method\82D081321S.M
 Quant Title : SW846 8260

TIC Library : C:\Database\NIST20.L
 TIC Integration Parameters: LSCINT.P

 Peak Number 3 Dimethyl sulfide Concentration Rank 1

R.T.	EstConc	Area	Relative to ISTD	R.T.
4.238	110.93 ug/l	2993600	Pentafluorobenzene	7.979

Hit#	of	5	Tentative ID	MW	MolForm	CAS#	Qual
1			Dimethyl sulfide	62	C2H6S	000075-18-3	94
2			Borane-methyl sulfide complex	76	C2H9BS	013292-87-0	90
3			Ethanethiol	62	C2H6S	000075-08-1	78
4			Ethene, chloro-	62	C2H3Cl	000075-01-4	9
5			Propane, 2-fluoro-	62	C3H7F	000420-26-8	7



Data Path : Z:\voasrv\HPCHEM1\MSVOA_D\Data\VD081621\
 Data File : VD070071.D
 Acq On : 16 Aug 2021 17:17
 Operator : VA/SY
 Sample : M3343-09
 Misc : 5.10G/5.00ml/MSVOA_D/SOIL
 ALS Vial : 12 Sample Multiplier: 1

Instrument :
 MSVOA_D
 ClientSampleId :
 20210591-AMENDED-COM-5

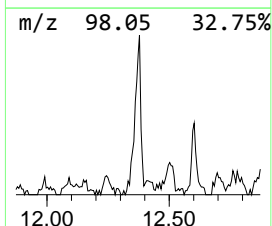
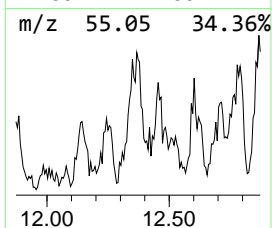
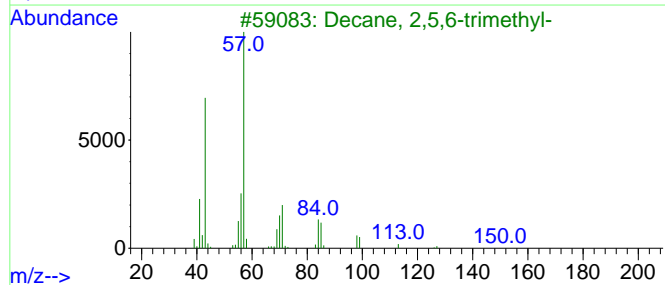
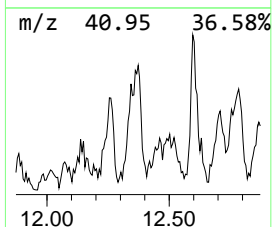
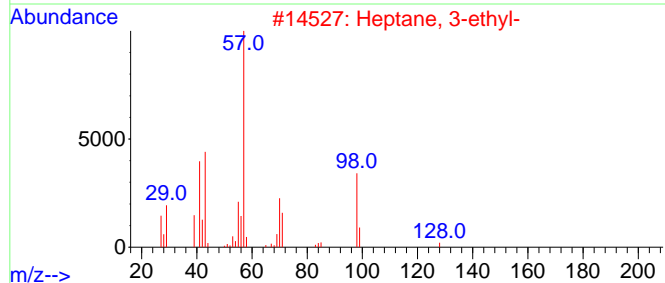
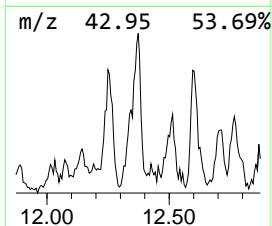
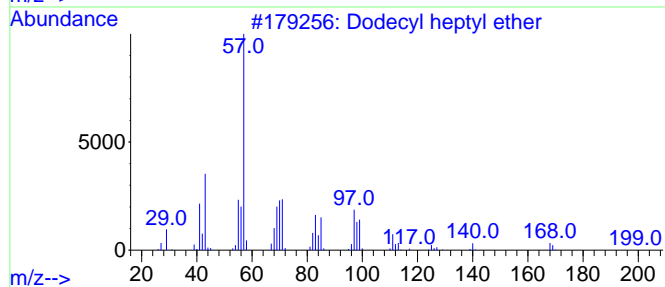
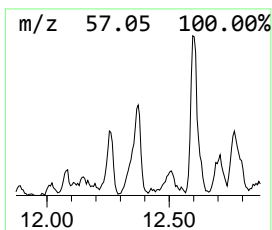
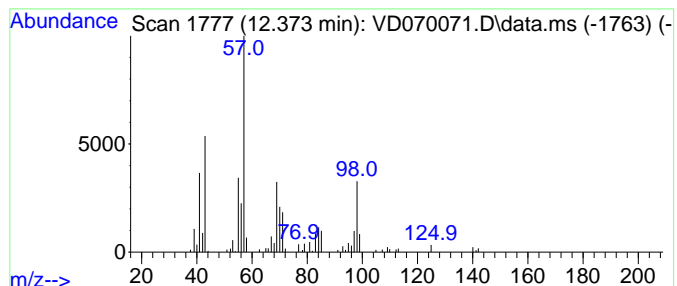
Quant Method : Z:\voasrv\HPCHEM1\MSVOA_D\Method\82D081321S.M
 Quant Title : SW846 8260

TIC Library : C:\Database\NIST20.L
 TIC Integration Parameters: LSCINT.P

 Peak Number 5 Dodecyl heptyl ether Concentration Rank 7

R.T.	EstConc	Area	Relative to ISTD	R.T.
12.373	6.34 ug/l	296868	Chlorobenzene-d5	11.637

Hit#	of	Tentative ID	MW	MolForm	CAS#	Qual
1	5	Dodecyl heptyl ether	284	C19H40O	1010406-39-2	64
2		Heptane, 3-ethyl-	128	C9H20	015869-80-4	53
3		Decane, 2,5,6-trimethyl-	184	C13H28	062108-23-0	53
4		Heptane, 3-ethyl-2-methyl-	142	C10H22	014676-29-0	52
5		1-Fluorononane	146	C9H19F	000463-18-3	47



Data Path : Z:\voasrv\HPCHEM1\MSVOA_D\Data\VD081621\
 Data File : VD070071.D
 Acq On : 16 Aug 2021 17:17
 Operator : VA/SY
 Sample : M3343-09
 Misc : 5.10G/5.00ml/MSVOA_D/SOIL
 ALS Vial : 12 Sample Multiplier: 1

Instrument :
 MSVOA_D
 ClientSampleId :
 20210591-AMENDED-COM-5

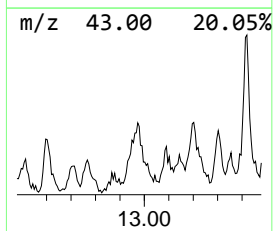
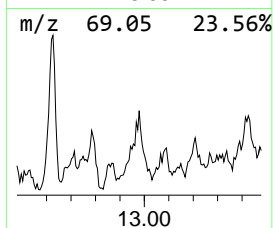
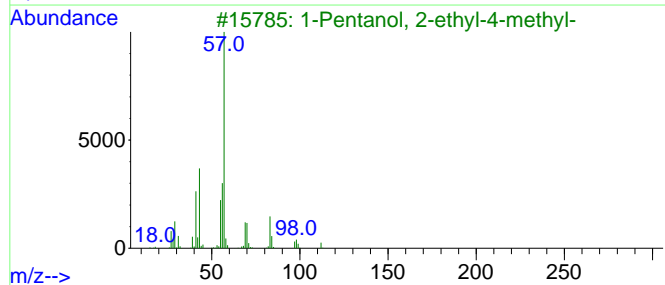
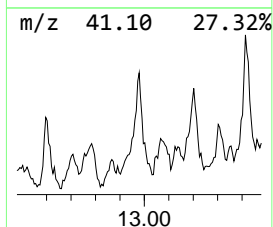
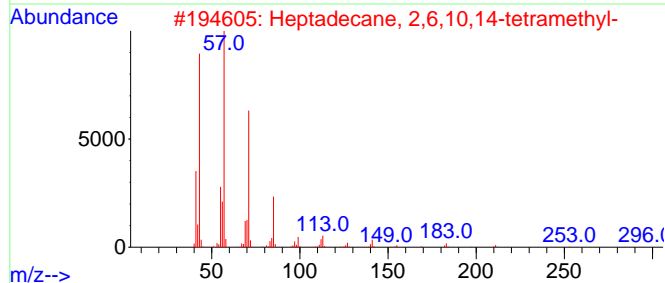
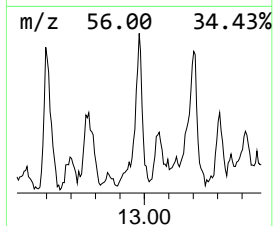
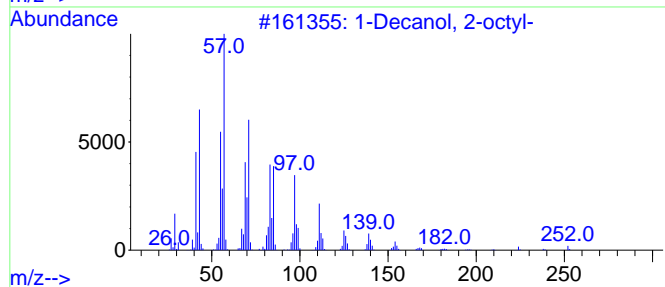
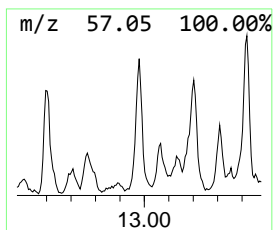
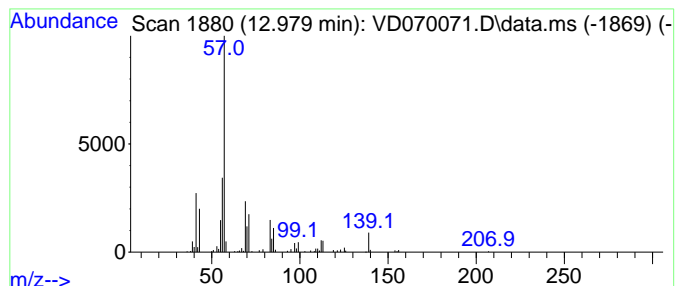
Quant Method : Z:\voasrv\HPCHEM1\MSVOA_D\Method\82D081321S.M
 Quant Title : SW846 8260

TIC Library : C:\Database\NIST20.L
 TIC Integration Parameters: LSCINT.P

 Peak Number 6 1-Decanol, 2-octyl- Concentration Rank 3

R.T.	EstConc	Area	Relative to ISTD	R.T.
12.979	12.60 ug/l	417347	1,4-Dichlorobenzene-d4	13.567

Hit#	of	5	Tentative ID	MW	MolForm	CAS#	Qual
1	1-Decanol, 2-octyl-			270	C18H38O	045235-48-1	59
2	Heptadecane, 2,6,10,14-tetramethyl-			296	C21H44	018344-37-1	53
3	1-Pentanol, 2-ethyl-4-methyl-			130	C8H18O	000106-67-2	53
4	Butyl decyl ether			214	C14H30O	1000406-40-2	53
5	Heptane, 2,2,4,6,6-pentamethyl-			170	C12H26	013475-82-6	50



Data Path : Z:\voasrv\HPCHEM1\MSVOA_D\Data\VD081621\
 Data File : VD070071.D
 Acq On : 16 Aug 2021 17:17
 Operator : VA/SY
 Sample : M3343-09
 Misc : 5.10G/5.00ml/MSVOA_D/SOIL
 ALS Vial : 12 Sample Multiplier: 1

Instrument :
 MSVOA_D
 ClientSampleId :
 20210591-AMENDED-COM-5

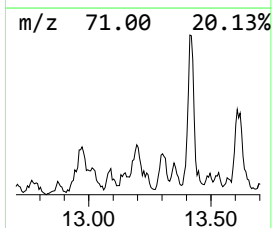
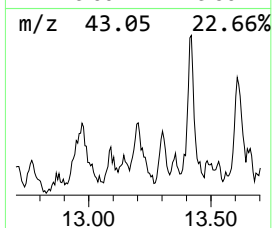
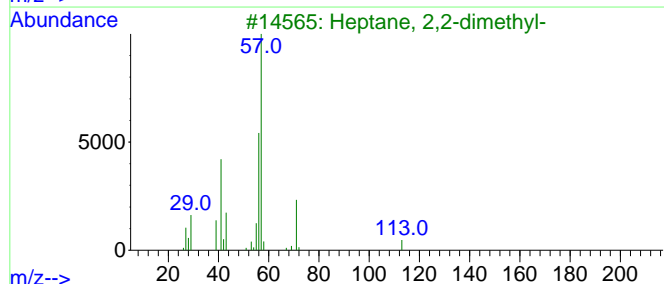
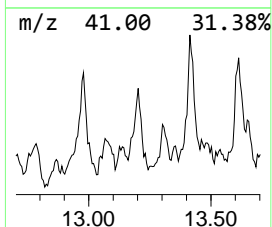
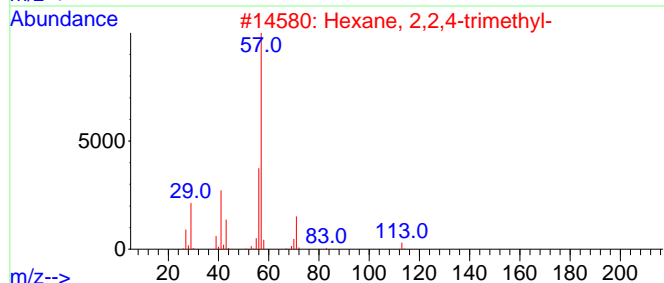
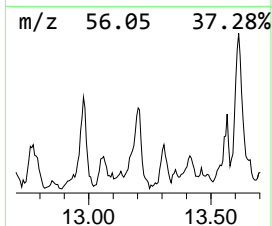
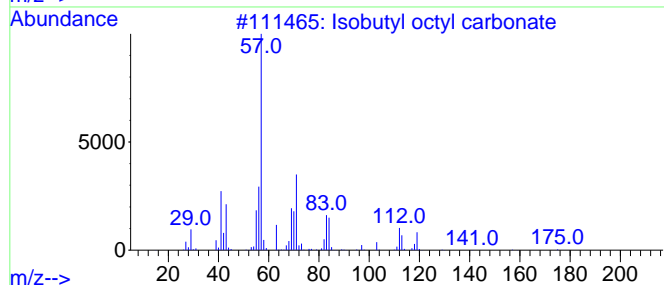
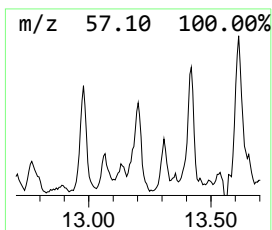
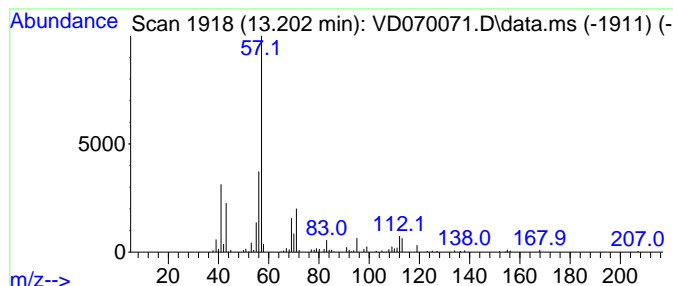
Quant Method : Z:\voasrv\HPCHEM1\MSVOA_D\Method\82D081321S.M
 Quant Title : SW846 8260

TIC Library : C:\Database\NIST20.L
 TIC Integration Parameters: LSCINT.P

 Peak Number 7 Isobutyl octyl carbonate Concentration Rank 5

R.T.	EstConc	Area	Relative to ISTD	R.T.
13.202	6.80 ug/l	225443	1,4-Dichlorobenzene-d4	13.567

Hit#	of	Tentative ID	MW	MolForm	CAS#	Qual
1	5	Isobutyl octyl carbonate	230	C13H26O3	1010372-74-6	56
2		Hexane, 2,2,4-trimethyl-	128	C9H20	016747-26-5	53
3		Heptane, 2,2-dimethyl-	128	C9H20	001071-26-7	53
4		Hexane, 2,2,5-trimethyl-	128	C9H20	003522-94-9	42
5		1-Hexene, 3,5,5-trimethyl-	126	C9H18	004316-65-8	37



Data Path : Z:\voasrv\HPCHEM1\MSVOA_D\Data\VD081621\
 Data File : VD070071.D
 Acq On : 16 Aug 2021 17:17
 Operator : VA/SY
 Sample : M3343-09
 Misc : 5.10G/5.00ml/MSVOA_D/SOIL
 ALS Vial : 12 Sample Multiplier: 1

Instrument :
 MSVOA_D
 ClientSampleId :
 20210591-AMENDED-COM-5

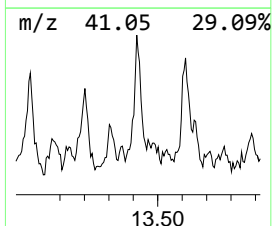
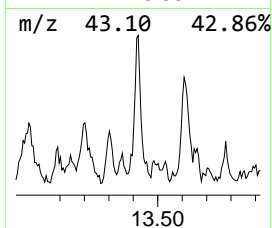
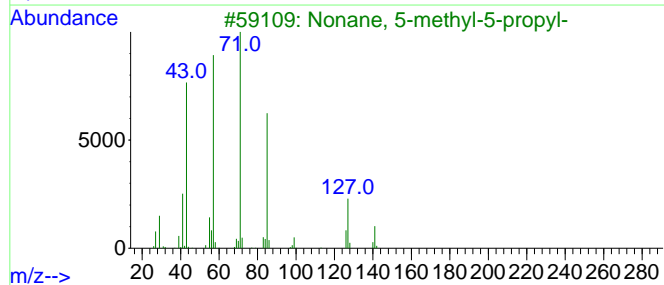
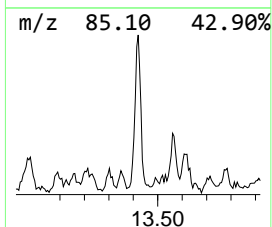
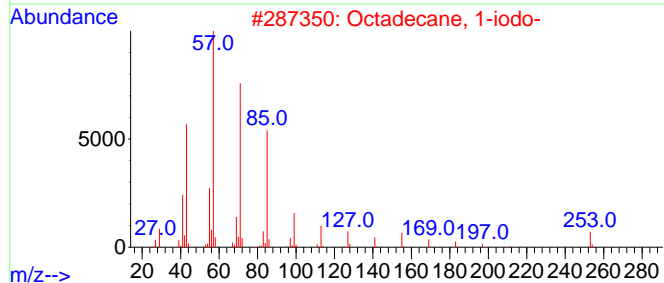
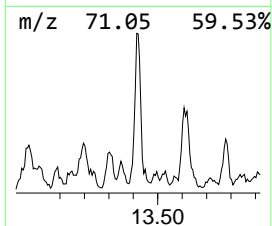
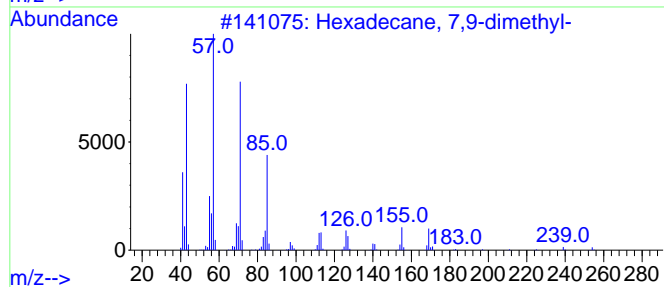
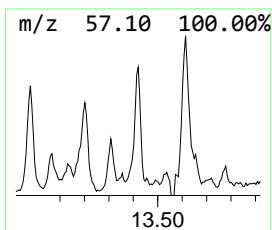
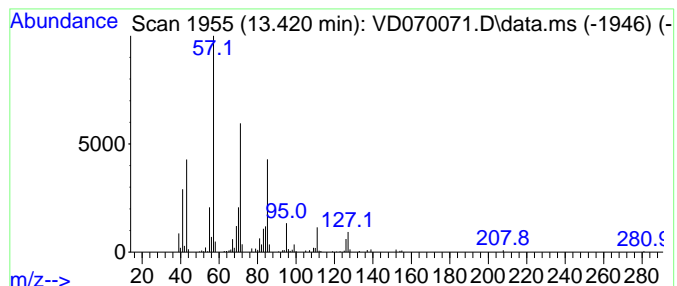
Quant Method : Z:\voasrv\HPCHEM1\MSVOA_D\Method\82D081321S.M
 Quant Title : SW846 8260

TIC Library : C:\Database\NIST20.L
 TIC Integration Parameters: LSCINT.P

 Peak Number 8 Hexadecane, 7,9-dimethyl- Concentration Rank 2

R.T.	EstConc	Area	Relative to ISTD	R.T.
13.420	13.18 ug/l	436769	1,4-Dichlorobenzene-d4	13.567

Hit#	of	5	Tentative ID	MW	MolForm	CAS#	Qual
1			Hexadecane, 7,9-dimethyl-	254	C18H38	021164-95-4	53
2			Octadecane, 1-iodo-	380	C18H37I	000629-93-6	53
3			Nonane, 5-methyl-5-propyl-	184	C13H28	017312-75-3	50
4			Tetradecane, 1-iodo-	324	C14H29I	019218-94-1	50
5			Eicosane, 1-iodo-	408	C20H41I	1000406-31-8	50



Data Path : Z:\voasrv\HPCHEM1\MSVOA_D\Data\VD081621\
 Data File : VD070071.D
 Acq On : 16 Aug 2021 17:17
 Operator : VA/SY
 Sample : M3343-09
 Misc : 5.10G/5.00ml/MSVOA_D/SOIL
 ALS Vial : 12 Sample Multiplier: 1

Instrument :
 MSVOA_D
 ClientSampleID :
 20210591-AMENDED-COM-5

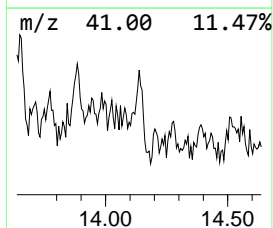
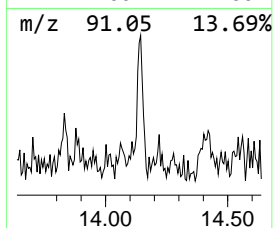
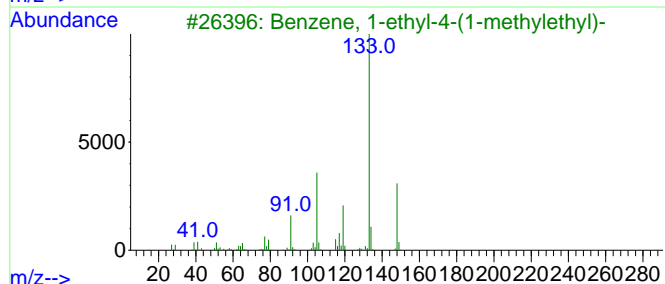
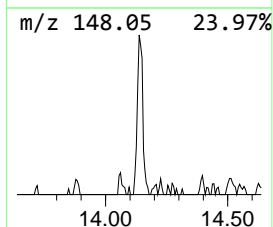
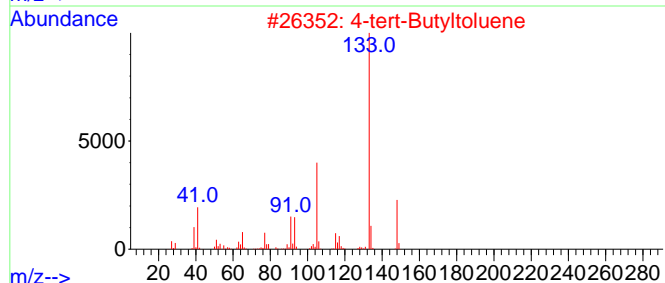
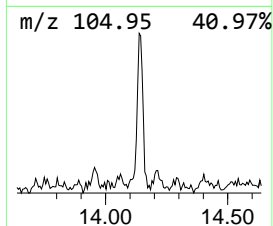
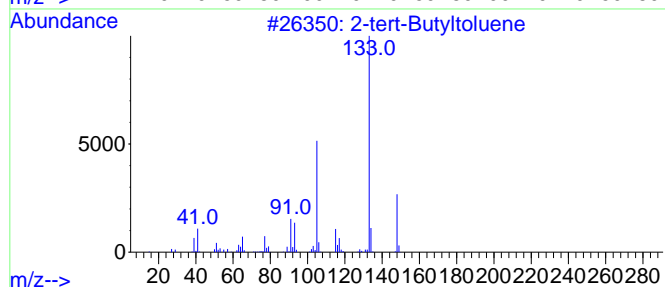
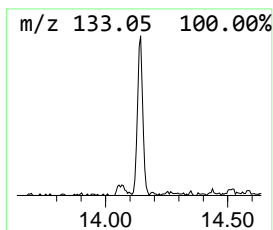
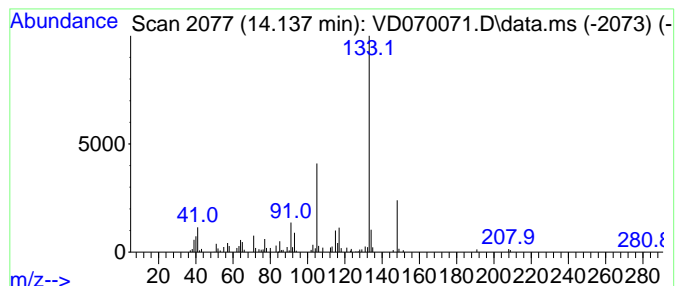
Quant Method : Z:\voasrv\HPCHEM1\MSVOA_D\Method\82D081321S.M
 Quant Title : SW846 8260

TIC Library : C:\Database\NIST20.L
 TIC Integration Parameters: LSCINT.P

 Peak Number 9 2-tert-Butyltoluene Concentration Rank 9

R.T.	EstConc	Area	Relative to ISTD	R.T.
14.137	5.02 ug/l	166419	1,4-Dichlorobenzene-d4	13.567

Hit#	of	5	Tentative ID	MW	MolForm	CAS#	Qual
1			2-tert-Butyltoluene	148	C11H16	001074-92-6	91
2			4-tert-Butyltoluene	148	C11H16	000098-51-1	91
3			Benzene, 1-ethyl-4-(1-methylethyl)-	148	C11H16	004218-48-8	90
4			Benzene, 1-(1,1-dimethylethyl)-3...	148	C11H16	001075-38-3	90
5			Benzene, 1,4-dimethyl-2-(1-methy...	148	C11H16	004132-72-3	90



Data Path : Z:\voasrv\HPCHEM1\MSVOA_D\Data\VD081621\
Data File : VD070071.D
Acq On : 16 Aug 2021 17:17
Operator : VA/SY
Sample : M3343-09
Misc : 5.10G/5.00ml/MSVOA_D/SOIL
ALS Vial : 12 Sample Multiplier: 1

Instrument :
MSVOA_D
ClientSampleId :
20210591-AMENDED-COM-5

Quant Method : Z:\voasrv\HPCHEM1\MSVOA_D\Method\82D081321S.M
Quant Title : SW846 8260

TIC Library : C:\Database\NIST0.L
TIC Integration Parameters: LSCINT.P

TIC Top Hit name	RT	EstConc	Units	Response	--Internal Standard--			
					#	RT	Resp	Conc
Acetaldehyde	2.491	6.8	ug/l	182894	1	7.979	1349270	50.0
Methylamine, N,...	2.679	10.7	ug/l	289514	1	7.979	1349270	50.0
Dimethyl sulfide	4.238	110.9	ug/l	2993600	1	7.979	1349270	50.0
Dodecyl heptyl ...	12.373	6.3	ug/l	296868	3	11.637	2339900	50.0
1-Decanol, 2-oc...	12.979	12.6	ug/l	417347	4	13.567	1656730	50.0
Isobutyl octyl ...	13.202	6.8	ug/l	225443	4	13.567	1656730	50.0
Hexadecane, 7,9...	13.420	13.2	ug/l	436769	4	13.567	1656730	50.0
2-tert-Butyltol...	14.137	5.0	ug/l	166419	4	13.567	1656730	50.0