

Data Path : Z:\VOASRV\HPCHEM1\MSVOA D\DATA\VD081920\
 Data File : VD066348.D
 Acq On : 20 Aug 2020 06:48
 Operator : VA/SY
 Sample : L3729-02
 Misc : 4.20G/5.00ml/MSVOA D/SOIL
 ALS Vial : 45 Sample Multiplier: 1

Instrument :
 MSVOA_D
 ClientSampleId :
 SB-4-(3-4)

Integration Parameters: RTEINT.P

Integrator: RTE
 Smoothing : ON Filtering: 5
 Sampling : 1 Min Area: 3 % of largest Peak
 Start Thrs: 0.2 Max Peaks: 100
 Stop Thrs : 0 Peak Location: TOP

If leading or trailing edge < 100 prefer < Baseline drop else tangent >
 Peak separation: 5

Method : Z:\VOASRV\HPCHEM1\MSVOA_D\METHOD\82D080520S.M
 Title : SW846 8260

Signal : TIC

peak #	R.T. min	first scan	max scan	last scan	PK TY	peak height	corr. area	corr. % max.	% of total
1	4.967	504	518	529	rBV4	33181	111736	13.71%	2.338%
2	5.985	683	691	695	rBV7	6203	15579	1.91%	0.326%
3	7.197	886	897	908	rVB2	7620	20726	2.54%	0.434%
4	7.914	1007	1019	1024	rBV	131522	317940	39.01%	6.653%
5	7.979	1024	1030	1043	rVB2	221562	492408	60.41%	10.304%
6	8.326	1075	1089	1100	rBV	109533	256216	31.43%	5.361%
7	8.861	1170	1180	1191	rBV	320343	644537	79.07%	13.487%
8	10.338	1423	1431	1439	rBV	447884	815119	100.00%	17.057%
9	10.720	1490	1496	1506	rVB2	14082	27953	3.43%	0.585%
10	11.085	1552	1558	1565	rBV2	18992	31010	3.80%	0.649%
11	11.643	1644	1653	1666	rBV	433336	753359	92.42%	15.765%
12	12.632	1813	1821	1828	rBV	366510	594615	72.95%	12.443%
13	13.579	1975	1982	1989	rVB	422067	685312	84.08%	14.341%
14	14.108	2065	2072	2079	rBV4	6825	12302	1.51%	0.257%

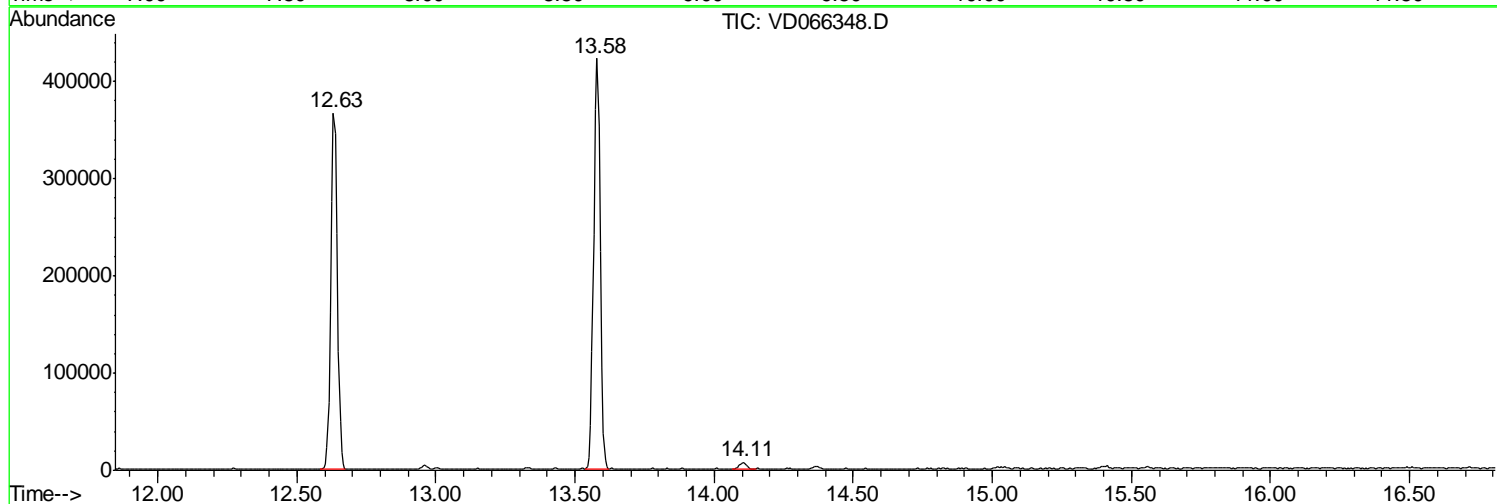
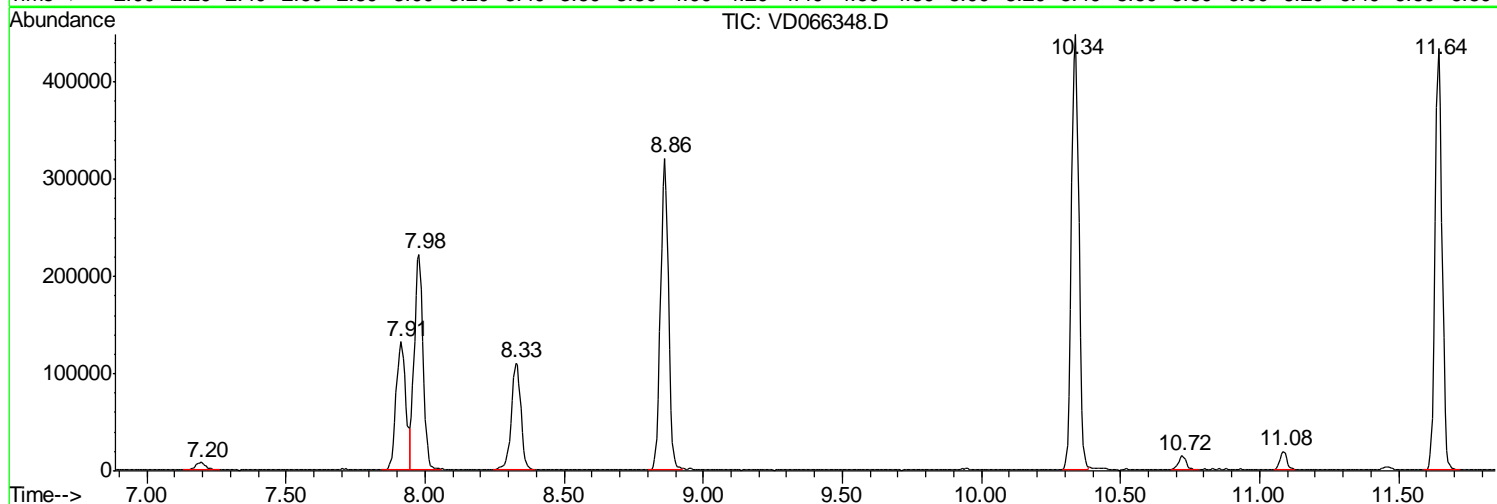
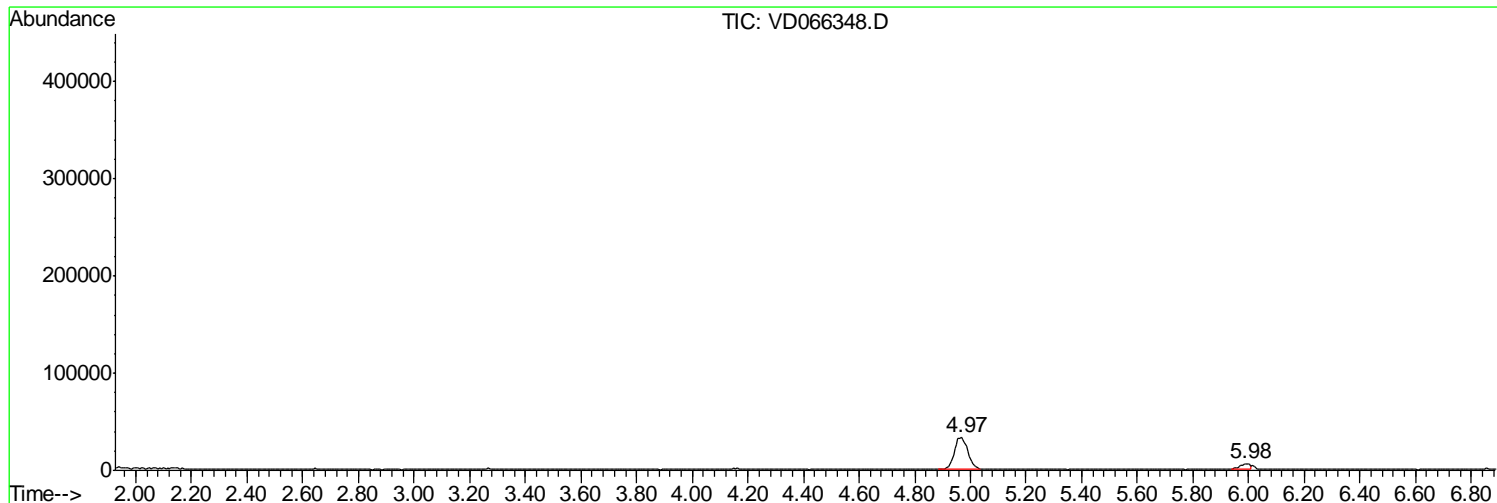
Sum of corrected areas: 4778812

Data Path : Z:\VOASRV\HPCHEM1\MSVOA D\DATA\VD081920\
 Data File : VD066348.D
 Acq On : 20 Aug 2020 06:48
 Operator : VA/SY
 Sample : L3729-02
 Misc : 4.20G/5.00ml/MSVOA D/SOIL
 ALS Vial : 45 Sample Multiplier: 1

Instrument :
 MSVOA_D
ClientSampled :
 SB-4-(3-4)

Quant Method : Z:\VOASRV\HPCHEM1\MSVOA_D\METHOD\82D080520S.M
 Quant Title : SW846 8260

TIC Library : C:\DATABASE\NIST11.L
 TIC Integration Parameters: LSCINT.P



Data Path : Z:\VOASRV\HPCHEM1\MSVOA_D\DATA\VD081920\
Data File : VD066348.D
Acq On : 20 Aug 2020 06:48
Operator : VA/SY
Sample : L3729-02
Misc : 4.20G/5.00ml/MSVOA_D/SOIL
ALS Vial : 45 Sample Multiplier: 1

Instrument :
MSVOA_D
ClientSampleId :
SB-4-(3-4)

Quant Method : Z:\VOASRV\HPCHEM1\MSVOA_D\METHOD\82D080520S.M
Quant Title : SW846 8260

TIC Library : C:\DATABASE\NIST11.L
TIC Integration Parameters: LSCINT.P

No Library Search Compounds Detected

Data Path : Z:\VOASRV\HPCHEM1\MSVOA_D\DATA\VD081920\
Data File : VD066348.D
Acq On : 20 Aug 2020 06:48
Operator : VA/SY
Sample : L3729-02
Misc : 4.20G/5.00ml/MSVOA_D/SOIL
ALS Vial : 45 Sample Multiplier: 1

Instrument :
MSVOA_D
ClientSampleId :
SB-4-(3-4)

Quant Method : Z:\VOASRV\HPCHEM1\MSVOA_D\METHOD\82D080520S.M
Quant Title : SW846 8260

TIC Library : C:\DATABASE\NIST11.L
TIC Integration Parameters: LSCINT.P

TIC Top Hit name	RT	EstConc	Units	Response	--Internal Standard--			
					#	RT	Resp	Conc
