

Data Path : Z:\voasrv\HPCHEM1\MSVOA_D\Data\VD081922\
 Data File : VD074162.D
 Acq On : 19 Aug 2022 21:50
 Operator : VA/SY
 Sample : N4242-01
 Misc : 5.02G/5.00ml/MSVOA_D/SOIL
 ALS Vial : 18 Sample Multiplier: 1

Instrument :
 MSVOA_D
 ClientSampleId :
 CL-02-081722

Quant Time: Aug 20 01:29:53 2022
 Quant Method : Z:\voasrv\HPCHEM1\MSVOA_D\Method\82D081822S.M
 Quant Title : SW846 8260
 QLast Update : Fri Aug 19 09:25:06 2022
 Response via : Initial Calibration

Compound	R.T.	QIon	Response	Conc	Units	Dev(Min)

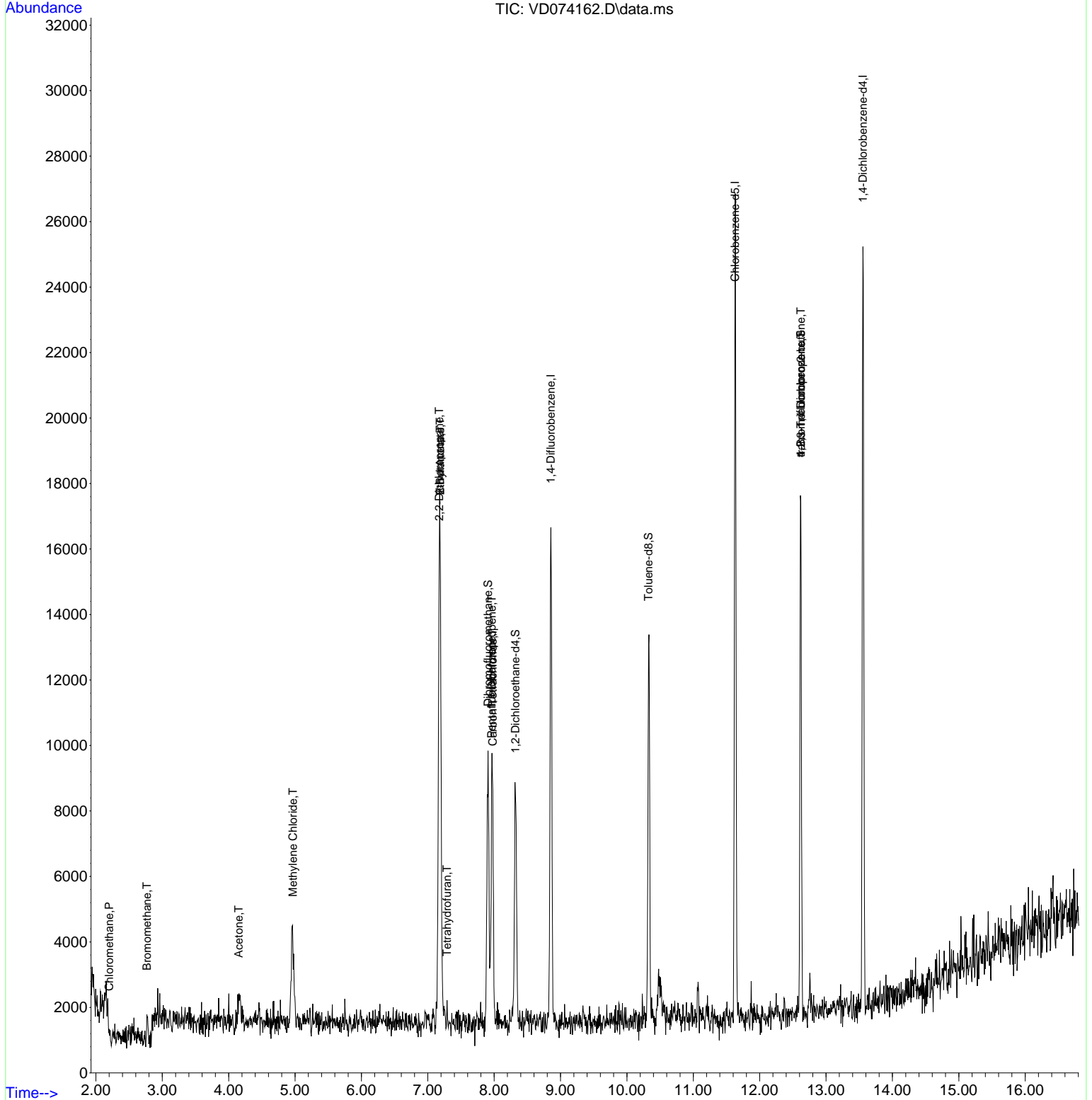
Internal Standards						
1) Pentafluorobenzene	7.961	168	6829	50.000	ug/l	-0.01
34) 1,4-Difluorobenzene	8.855	114	13311	50.000	ug/l	0.00
63) Chlorobenzene-d5	11.632	117	14677	50.000	ug/l	# 0.00
72) 1,4-Dichlorobenzene-d4	13.555	152	6433	50.000	ug/l	0.00
System Monitoring Compounds						
33) 1,2-Dichloroethane-d4	8.320	65	6573	140.304	ug/l	0.00
Spiked Amount	50.000	Range	50 - 163	Recovery	=	280.600%#
35) Dibromofluoromethane	7.908	113	5816	92.683	ug/l	0.00
Spiked Amount	50.000	Range	54 - 147	Recovery	=	185.360%#
50) Toluene-d8	10.326	98	8928	48.854	ug/l	0.00
Spiked Amount	50.000	Range	49 - 140	Recovery	=	97.700%
62) 4-Bromofluorobenzene	12.620	95	5642	56.645	ug/l	0.00
Spiked Amount	50.000	Range	25 - 144	Recovery	=	113.300%
Target Compounds						
						Qvalue
3) Chloromethane	2.203	50	264	4.296	ug/l #	40
5) Bromomethane	2.767	94	384	11.118	ug/l #	1
16) Acetone	4.150	43	1520	103.313	ug/l #	47
20) Methylene Chloride	4.967	84	2019	11.864	ug/l	95
25) 2-Butanone	7.185	43	769	32.033	ug/l #	52
26) 2,2-Dichloropropane	7.173	77	853	6.549	ug/l #	54
29) Tetrahydrofuran	7.291	42	54	3.709	ug/l #	38
36) 1,1-Dichloropropene	7.967	75	510	3.743	ug/l #	43
37) Ethyl Acetate	7.185	43	769	12.594	ug/l #	31
38) Carbon Tetrachloride	7.979	117	853	6.331	ug/l #	13
76) 1,2,3-Trichloropropane	12.620	75	3051	45.798	ug/l #	100
81) trans-1,4-Dichloro-2-b...	12.620	75	3051	119.840	ug/l #	7

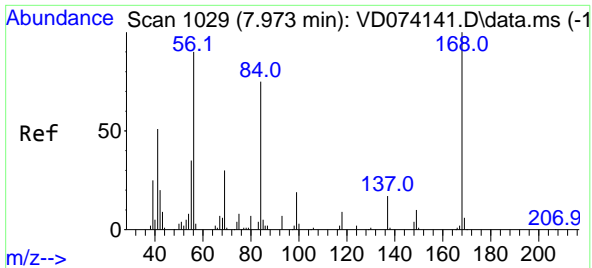
(#) = qualifier out of range (m) = manual integration (+) = signals summed

Data Path : Z:\voasrv\HPCHEM1\MSVOA_D\Data\VD081922\
 Data File : VD074162.D
 Acq On : 19 Aug 2022 21:50
 Operator : VA/SY
 Sample : N4242-01
 Misc : 5.02G/5.00ml/MSVOA_D/SOIL
 ALS Vial : 18 Sample Multiplier: 1

Instrument :
 MSVOA_D
 ClientSampleId :
 CL-02-081722

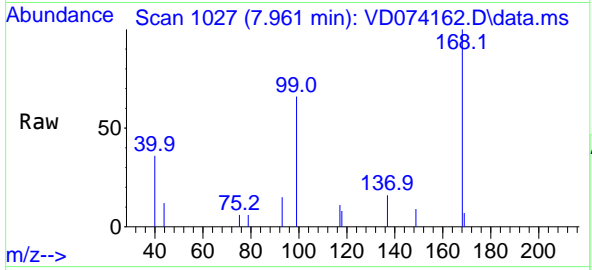
Quant Time: Aug 20 01:29:53 2022
 Quant Method : Z:\voasrv\HPCHEM1\MSVOA_D\Method\82D081822S.M
 Quant Title : SW846 8260
 QLast Update : Fri Aug 19 09:25:06 2022
 Response via : Initial Calibration



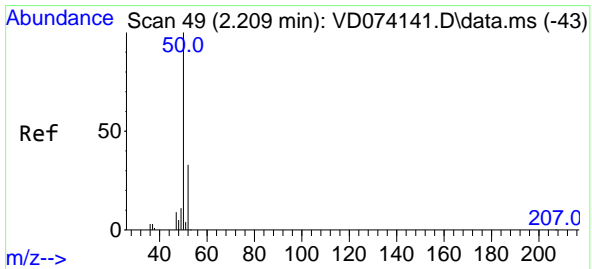
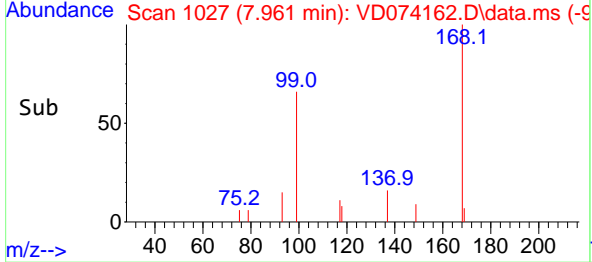
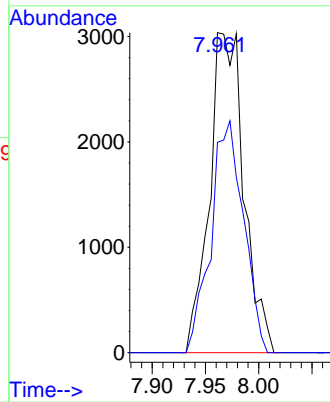


#1
 Pentafluorobenzene
 Concen: 50.000 ug/l
 RT: 7.961 min Scan# 10
 Delta R.T. -0.012 min
 Lab File: VD074162.D
 Acq: 19 Aug 2022 21:50

Instrument : MSVOA_D
 ClientSampleId : CL-02-081722

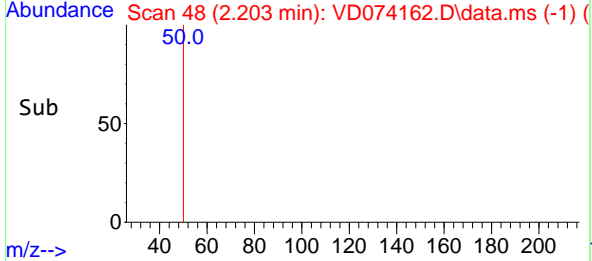
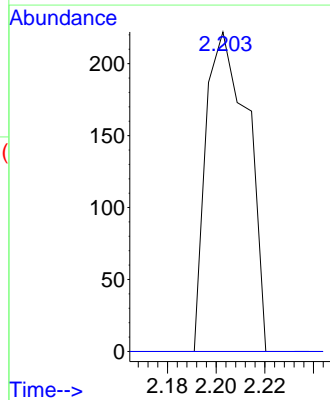
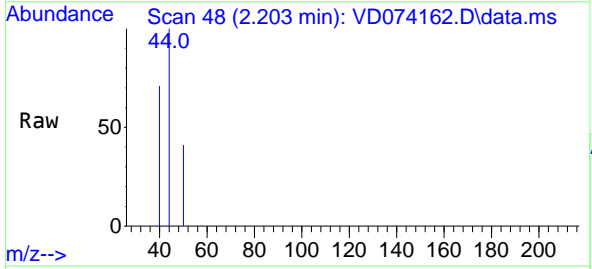


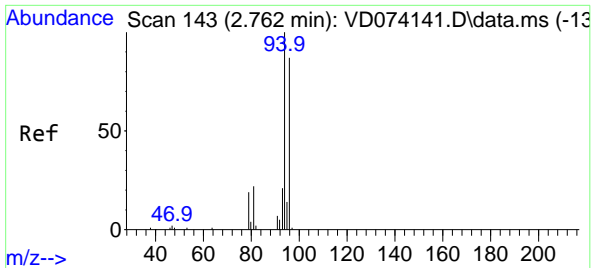
Tgt Ion:168 Resp: 6829
 Ion Ratio Lower Upper
 168 100
 99 65.8 49.8 74.6



#3
 Chloromethane
 Concen: 4.296 ug/l
 RT: 2.203 min Scan# 48
 Delta R.T. -0.006 min
 Lab File: VD074162.D
 Acq: 19 Aug 2022 21:50

Tgt Ion: 50 Resp: 264
 Ion Ratio Lower Upper
 50 100
 52 0.0 27.4 41.0#

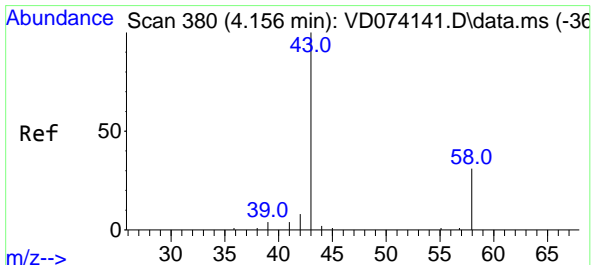
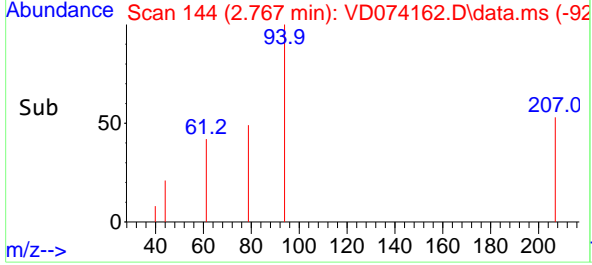
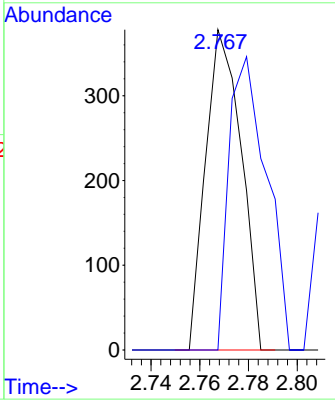
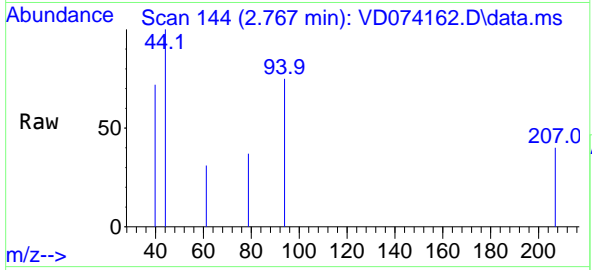




#5
 Bromomethane
 Concen: 11.118 ug/l
 RT: 2.767 min Scan# 14
 Delta R.T. 0.005 min
 Lab File: VD074162.D
 Acq: 19 Aug 2022 21:50

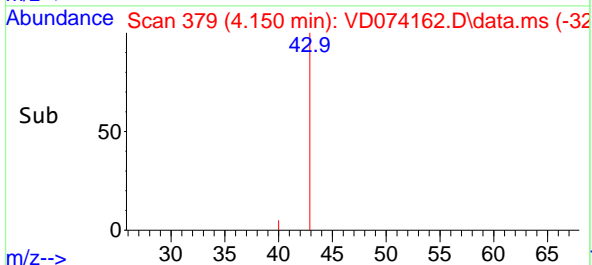
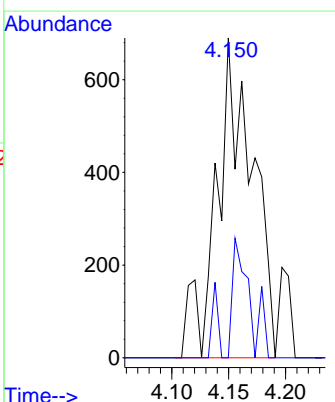
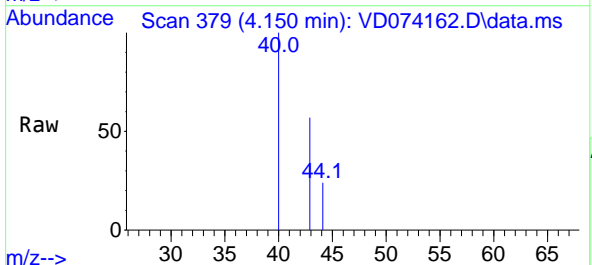
Instrument : MSVOA_D
 ClientSampleId : CL-02-081722

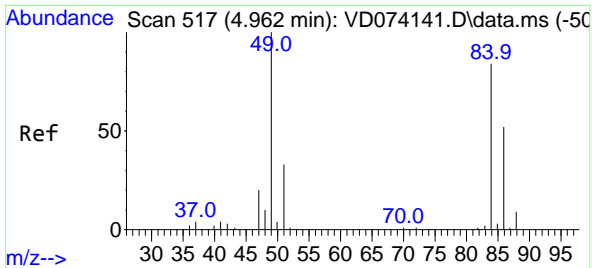
Tgt Ion: 94 Resp: 384
 Ion Ratio Lower Upper
 94 100
 96 0.0 77.6 116.4#



#16
 Acetone
 Concen: 103.313 ug/l
 RT: 4.150 min Scan# 379
 Delta R.T. -0.006 min
 Lab File: VD074162.D
 Acq: 19 Aug 2022 21:50

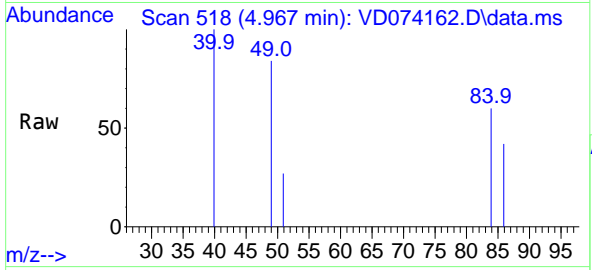
Tgt Ion: 43 Resp: 1520
 Ion Ratio Lower Upper
 43 100
 58 0.0 22.1 33.1#





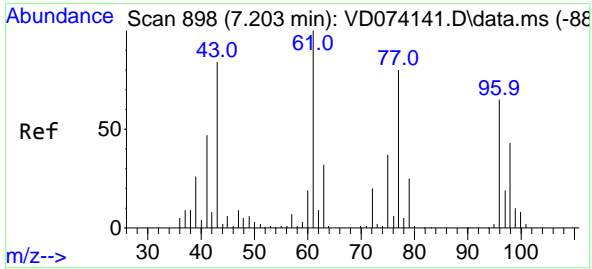
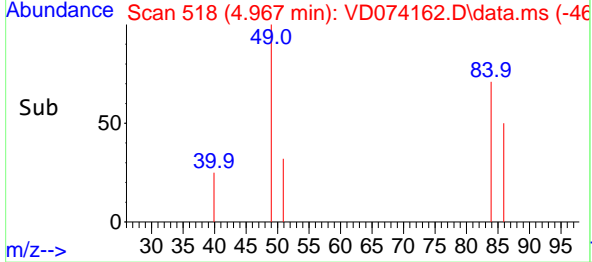
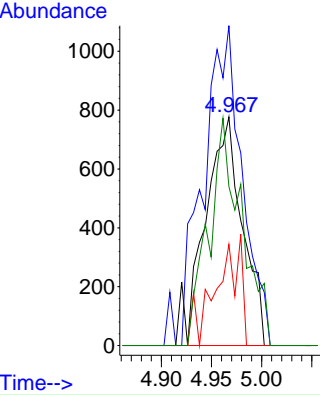
#20
 Methylene Chloride
 Concen: 11.864 ug/l
 RT: 4.967 min Scan# 517
 Delta R.T. 0.005 min
 Lab File: VD074162.D
 Acq: 19 Aug 2022 21:50

Instrument : MSVOA_D
 ClientSampleId : CL-02-081722

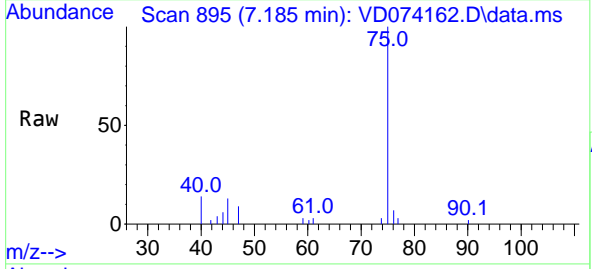


Tgt Ion: 84 Resp: 2019

Ion	Ratio	Lower	Upper
84	100		
49	139.9	112.8	169.2
51	44.3	32.6	48.8
86	69.5	47.9	71.9

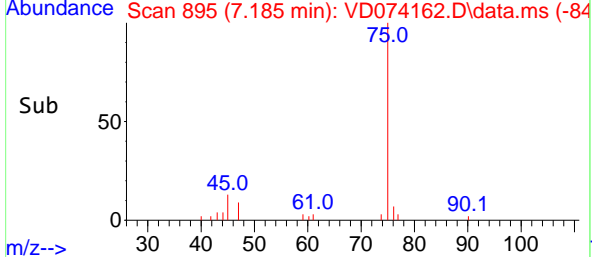
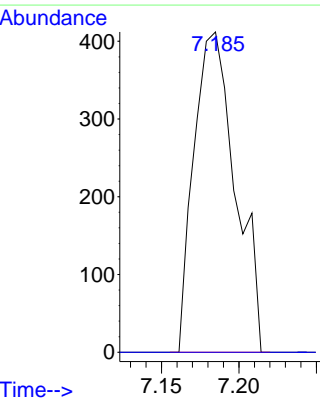


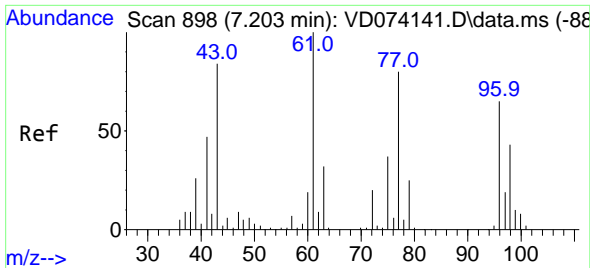
#25
 2-Butanone
 Concen: 32.033 ug/l
 RT: 7.185 min Scan# 895
 Delta R.T. -0.018 min
 Lab File: VD074162.D
 Acq: 19 Aug 2022 21:50



Tgt Ion: 43 Resp: 769

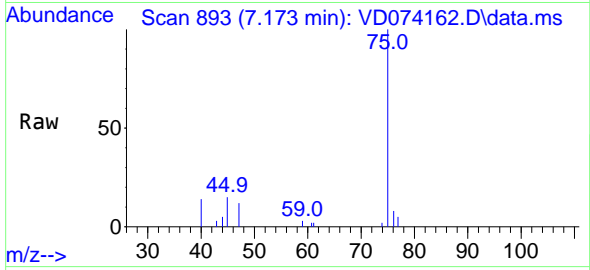
Ion	Ratio	Lower	Upper
43	100		
72	0.0	18.6	27.8#



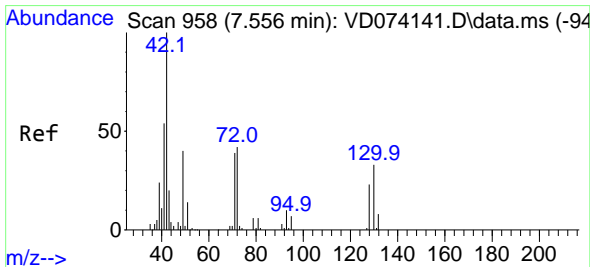
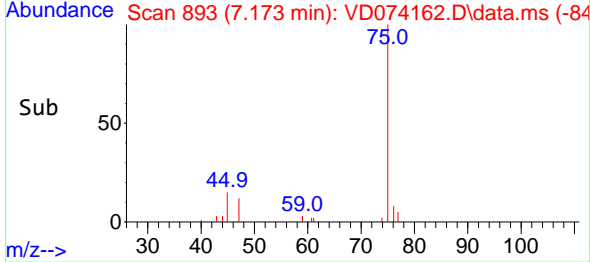
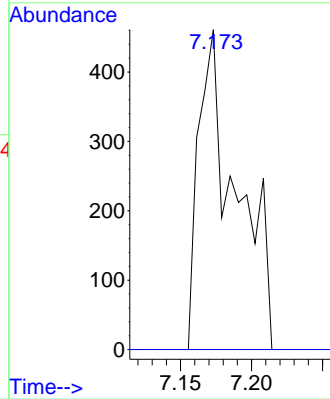


#26
 2,2-Dichloropropane
 Concen: 6.549 ug/l
 RT: 7.173 min Scan# 898
 Delta R.T. -0.030 min
 Lab File: VD074162.D
 Acq: 19 Aug 2022 21:50

Instrument : MSVOA_D
 ClientSampleId : CL-02-081722

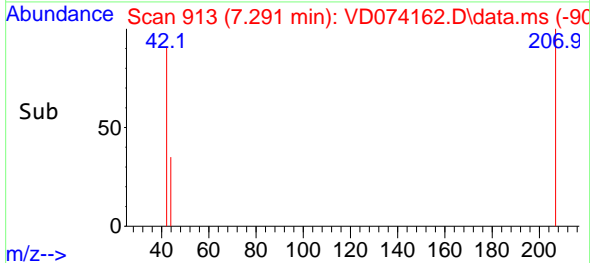
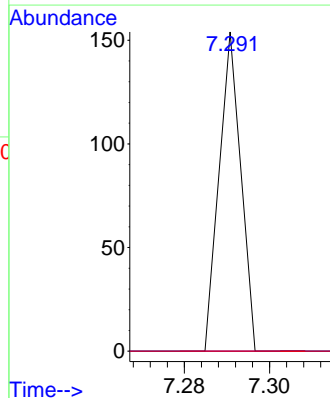
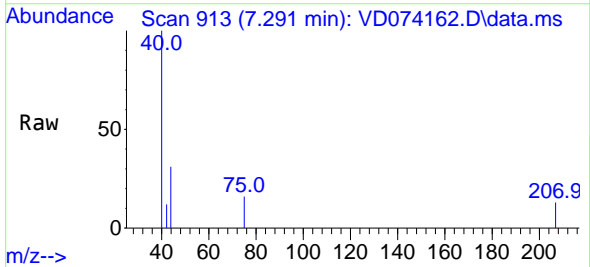


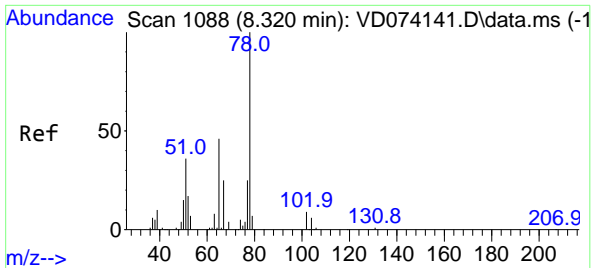
Tgt Ion: 77 Resp: 853
 Ion Ratio Lower Upper
 77 100
 97 0.0 10.8 32.4#



#29
 Tetrahydrofuran
 Concen: 3.709 ug/l
 RT: 7.291 min Scan# 913
 Delta R.T. -0.265 min
 Lab File: VD074162.D
 Acq: 19 Aug 2022 21:50

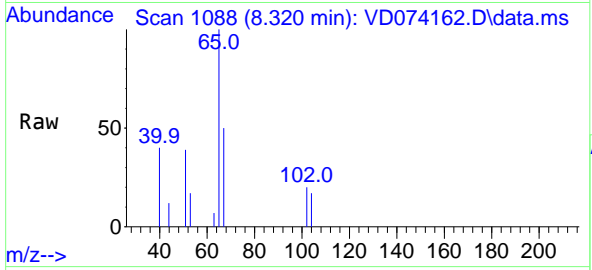
Tgt Ion: 42 Resp: 54
 Ion Ratio Lower Upper
 42 100
 72 0.0 30.7 46.1#
 71 0.0 28.6 43.0#



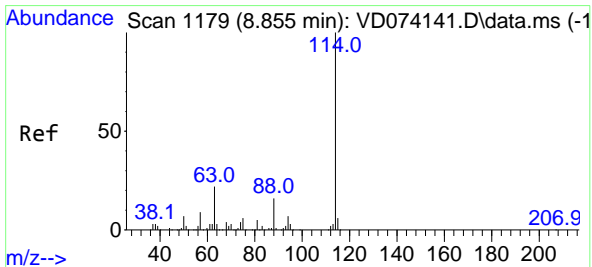
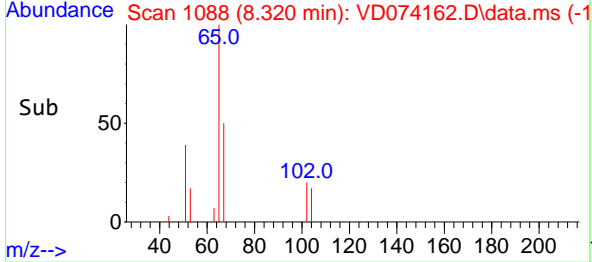
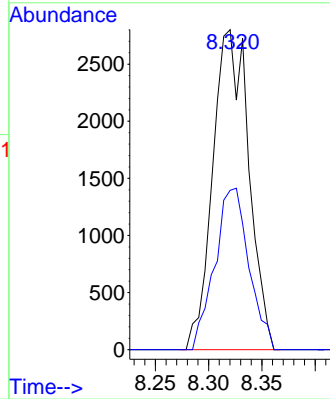


#33
 1,2-Dichloroethane-d4
 Concen: 140.304 ug/l
 RT: 8.320 min Scan# 1088
 Delta R.T. 0.000 min
 Lab File: VD074162.D
 Acq: 19 Aug 2022 21:50

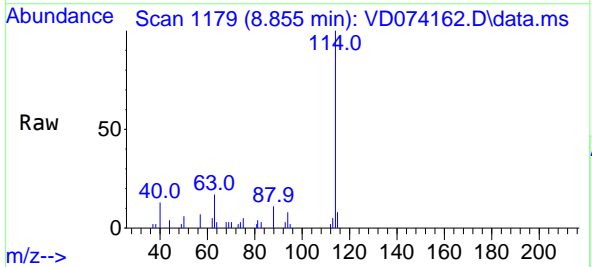
Instrument : MSVOA_D
 ClientSampleId : CL-02-081722



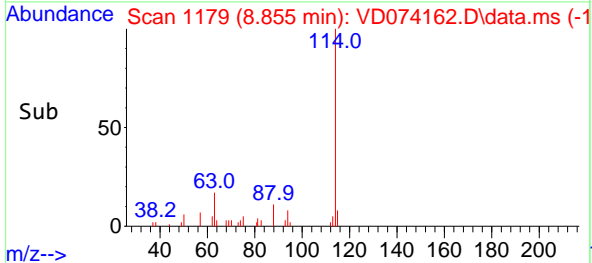
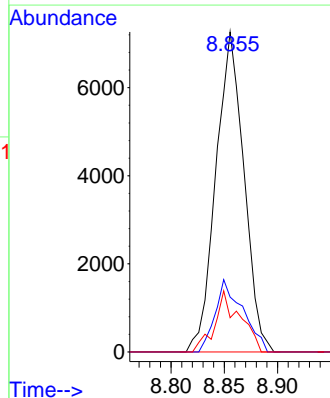
Tgt Ion: 65 Resp: 6573
 Ion Ratio Lower Upper
 65 100
 67 48.0 0.0 101.4

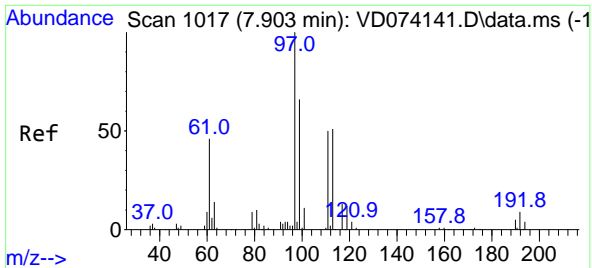


#34
 1,4-Difluorobenzene
 Concen: 50.000 ug/l
 RT: 8.855 min Scan# 1179
 Delta R.T. 0.000 min
 Lab File: VD074162.D
 Acq: 19 Aug 2022 21:50



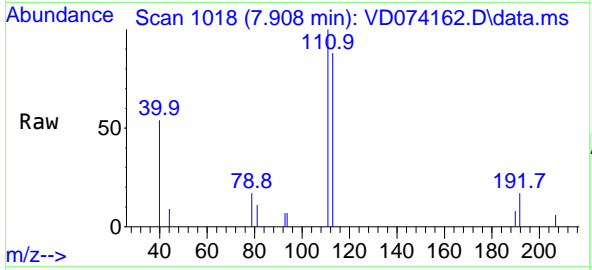
Tgt Ion: 114 Resp: 13311
 Ion Ratio Lower Upper
 114 100
 63 17.2 0.0 46.6
 88 10.7 0.0 33.2



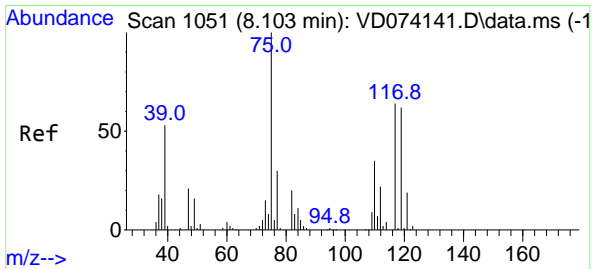
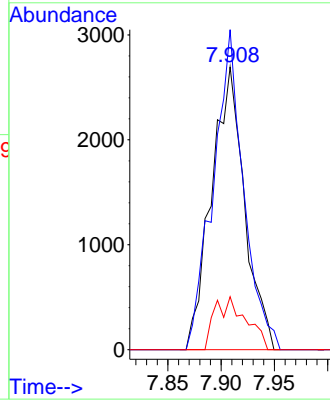
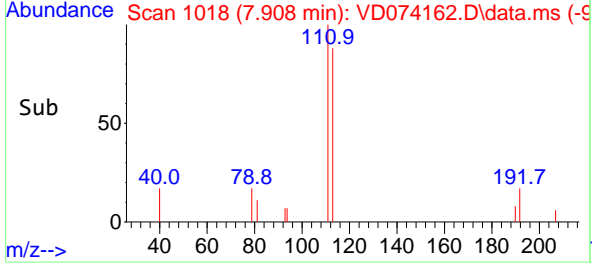


#35
 Dibromofluoromethane
 Concen: 92.683 ug/l
 RT: 7.908 min Scan# 1017
 Delta R.T. 0.005 min
 Lab File: VD074162.D
 Acq: 19 Aug 2022 21:50

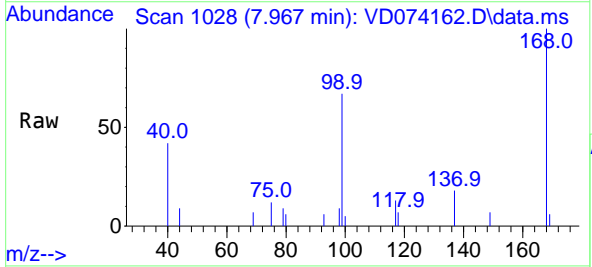
Instrument : MSVOA_D
 ClientSampleId : CL-02-081722



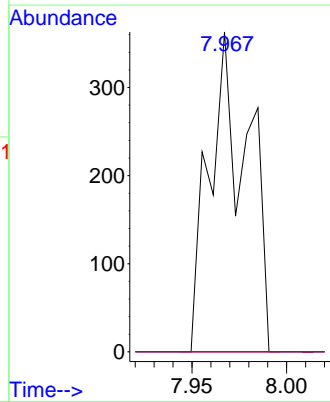
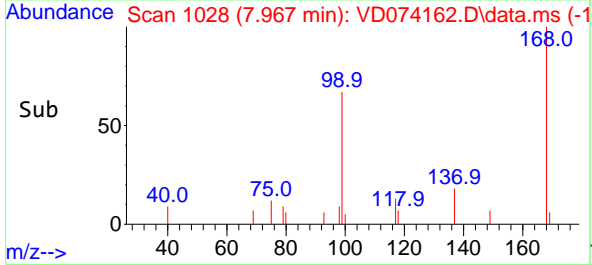
Tgt Ion:113 Resp: 5816
 Ion Ratio Lower Upper
 113 100
 111 104.1 83.8 125.6
 192 6.6 14.6 21.8#

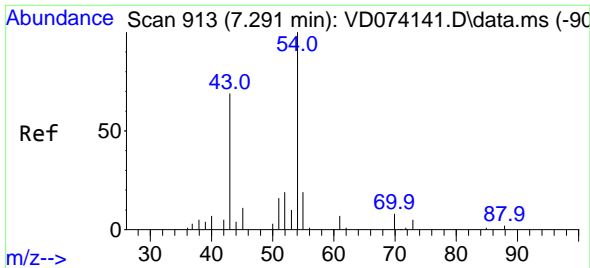


#36
 1,1-Dichloropropene
 Concen: 3.743 ug/l
 RT: 7.967 min Scan# 1028
 Delta R.T. -0.136 min
 Lab File: VD074162.D
 Acq: 19 Aug 2022 21:50



Tgt Ion: 75 Resp: 510
 Ion Ratio Lower Upper
 75 100
 110 0.0 16.4 49.1#
 77 0.0 24.2 36.2#



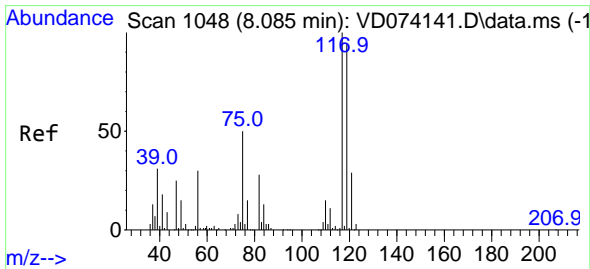
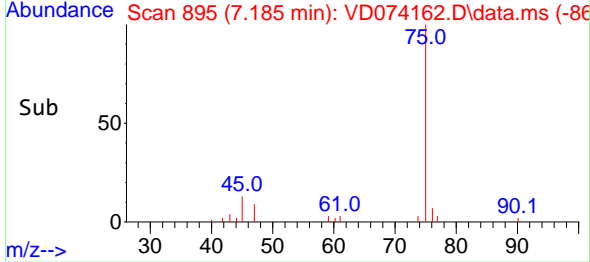
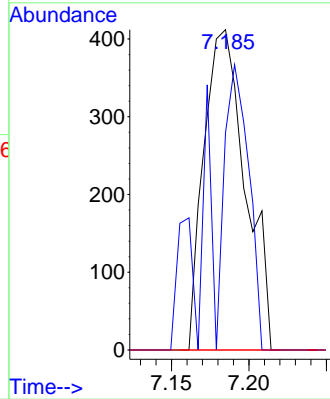
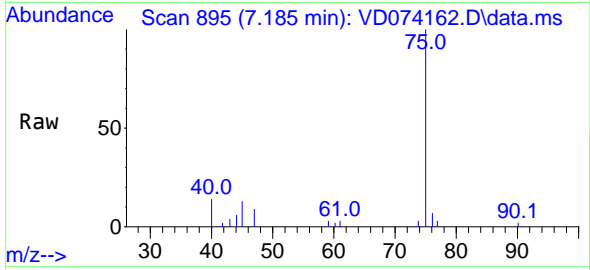


#37
 Ethyl Acetate
 Concen: 12.594 ug/l
 RT: 7.185 min Scan# 895
 Delta R.T. -0.106 min
 Lab File: VD074162.D
 Acq: 19 Aug 2022 21:50

Instrument : MSVOA_D
 ClientSampleId : VD074162.D
 CL-02-081722

Tgt Ion: 43 Resp: 769

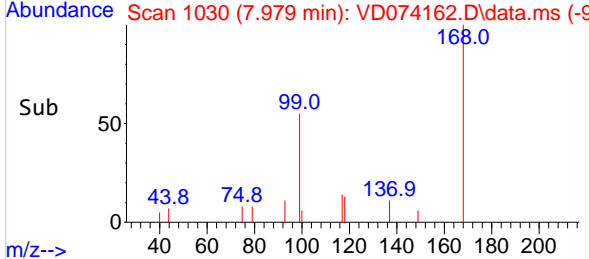
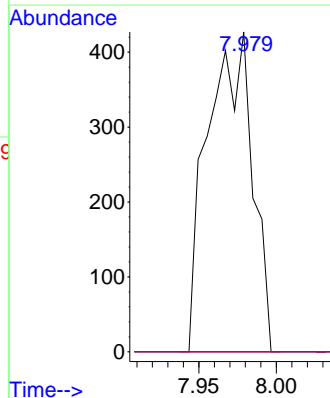
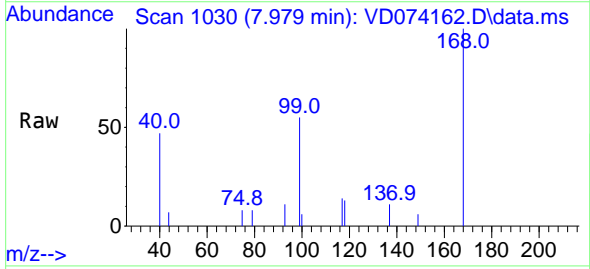
Ion	Ratio	Lower	Upper
43	100		
61	51.8	9.8	14.8#
70	0.0	6.9	10.3#

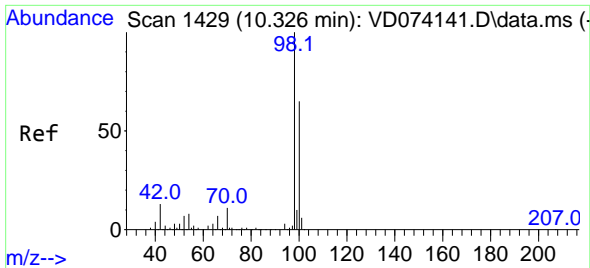


#38
 Carbon Tetrachloride
 Concen: 6.331 ug/l
 RT: 7.979 min Scan# 1030
 Delta R.T. -0.106 min
 Lab File: VD074162.D
 Acq: 19 Aug 2022 21:50

Tgt Ion: 117 Resp: 853

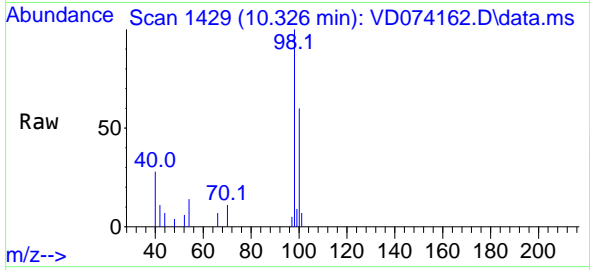
Ion	Ratio	Lower	Upper
117	100		
119	0.0	75.8	113.6#
121	0.0	24.5	36.7#



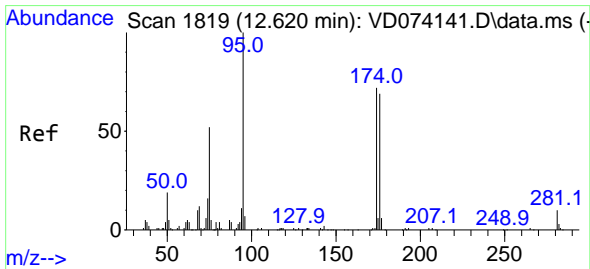
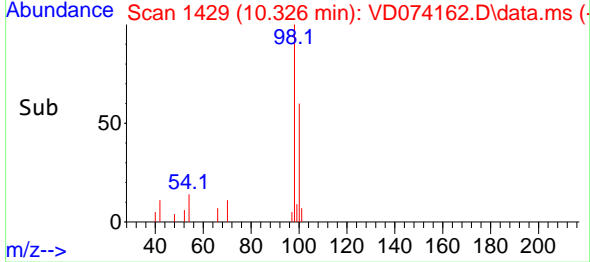
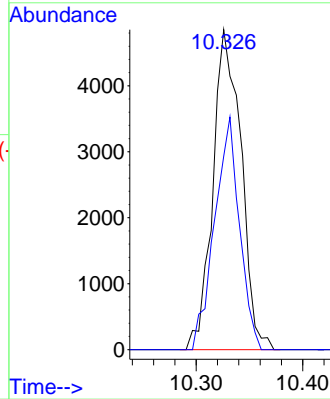


#50
 Toluene-d8
 Concen: 48.854 ug/l
 RT: 10.326 min Scan# 1429
 Delta R.T. -0.000 min
 Lab File: VD074162.D
 Acq: 19 Aug 2022 21:50

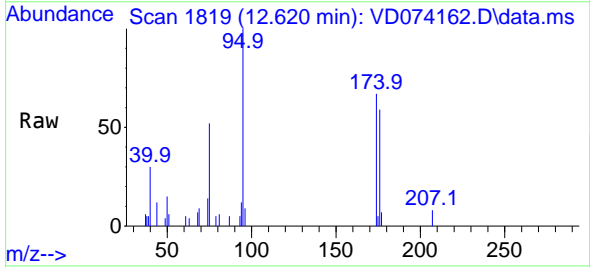
Instrument : MSVOA_D
 ClientSampleId : CL-02-081722



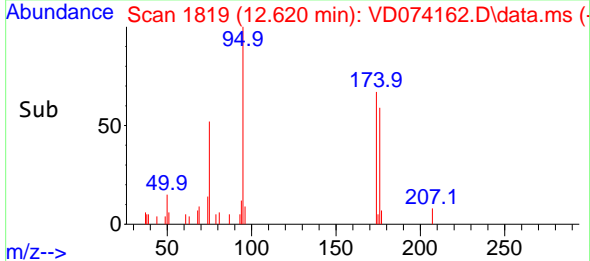
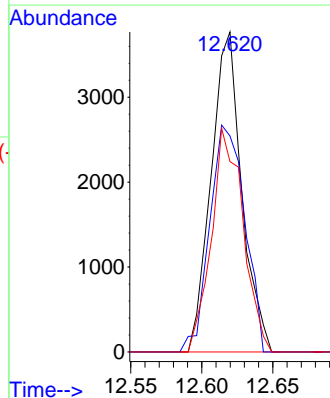
Tgt Ion: 98 Resp: 8928
 Ion Ratio Lower Upper
 98 100
 100 64.1 52.4 78.6

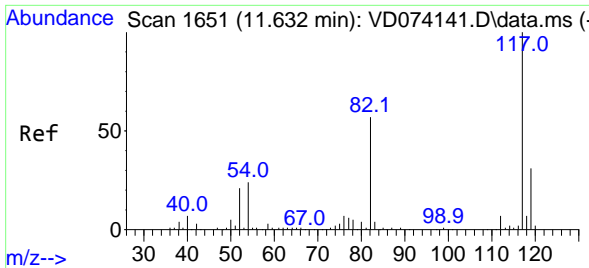


#62
 4-Bromofluorobenzene
 Concen: 56.645 ug/l
 RT: 12.620 min Scan# 1819
 Delta R.T. -0.000 min
 Lab File: VD074162.D
 Acq: 19 Aug 2022 21:50



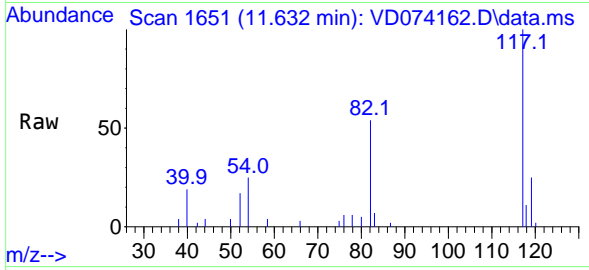
Tgt Ion: 95 Resp: 5642
 Ion Ratio Lower Upper
 95 100
 174 81.1 0.0 152.8
 176 72.2 0.0 145.4





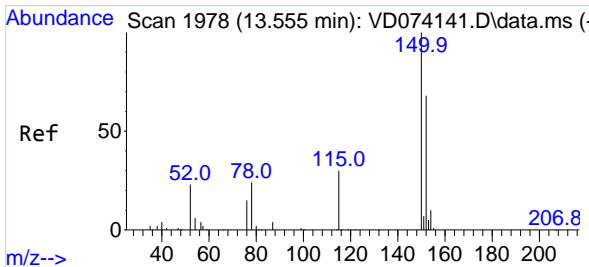
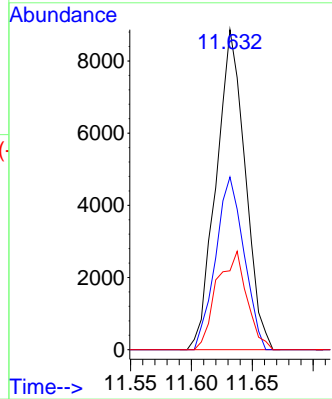
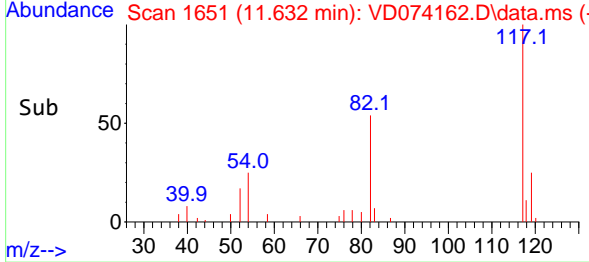
#63
 Chlorobenzene-d5
 Concen: 50.000 ug/l
 RT: 11.632 min Scan# 1651
 Delta R.T. -0.000 min
 Lab File: VD074162.D
 Acq: 19 Aug 2022 21:50

Instrument : MSVOA_D
 ClientSampleId : CL-02-081722

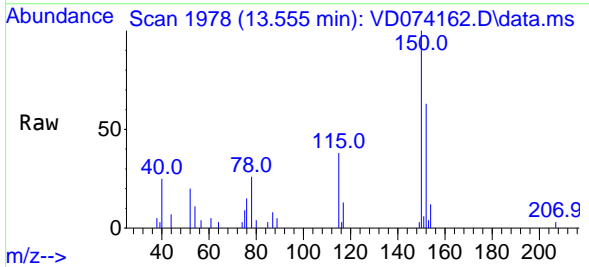


Tgt Ion:117 Resp: 14677

Ion	Ratio	Lower	Upper
117	100		
82	53.9	45.3	67.9
119	24.7	26.6	40.0#

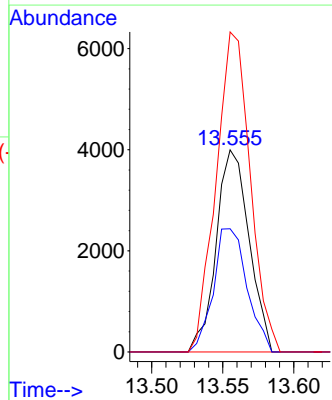
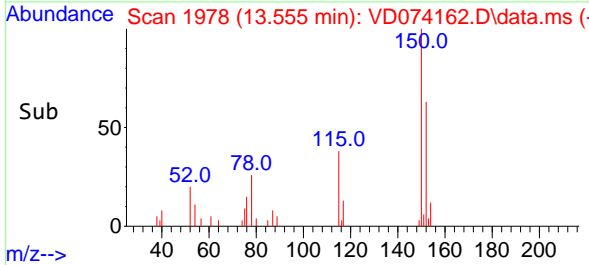


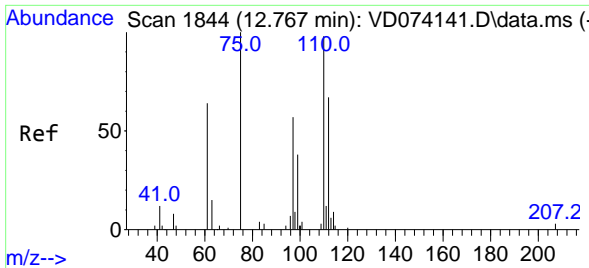
#72
 1,4-Dichlorobenzene-d4
 Concen: 50.000 ug/l
 RT: 13.555 min Scan# 1978
 Delta R.T. 0.000 min
 Lab File: VD074162.D
 Acq: 19 Aug 2022 21:50



Tgt Ion:152 Resp: 6433

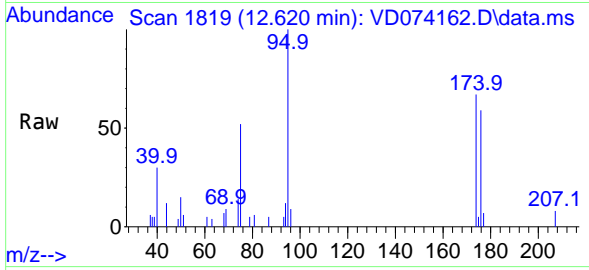
Ion	Ratio	Lower	Upper
152	100		
115	62.4	31.3	93.8
150	164.6	0.0	348.6



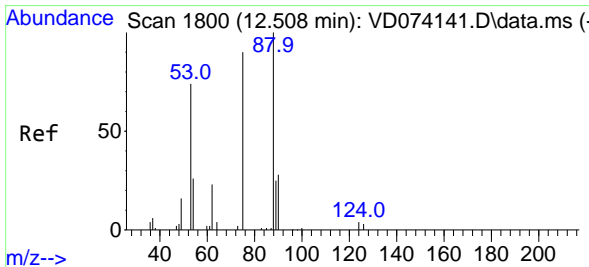
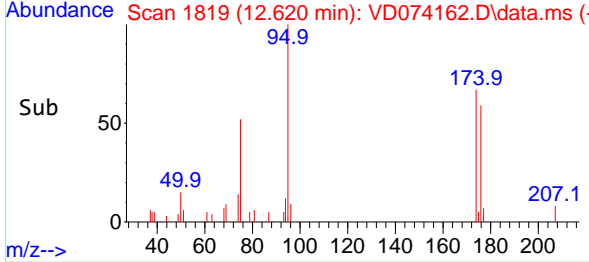
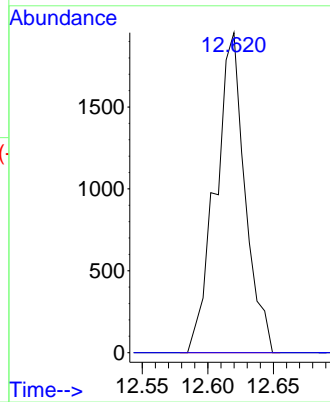


#76
 1,2,3-Trichloropropane
 Concen: 45.798 ug/l
 RT: 12.620 min Scan# 1819
 Delta R.T. -0.147 min
 Lab File: VD074162.D
 Acq: 19 Aug 2022 21:50

Instrument : MSVOA_D
 ClientSampleId : CL-02-081722



Tgt Ion: 75 Resp: 3051
 Ion Ratio Lower Upper
 75 100
 77 0.0 0.0 0.0



#81
 trans-1,4-Dichloro-2-butene
 Concen: 119.840 ug/l
 RT: 12.620 min Scan# 1819
 Delta R.T. 0.112 min
 Lab File: VD074162.D
 Acq: 19 Aug 2022 21:50

Tgt Ion: 75 Resp: 3051
 Ion Ratio Lower Upper
 75 100
 53 0.0 86.5 129.7#
 89 0.0 33.9 50.9#

