

Data Path : Z:\VOASRV\HPCHEM1\MSVOA D\DATA\VD082820\
 Data File : VD066458.D
 Acq On : 28 Aug 2020 14:27
 Operator : VA/SY
 Sample : L3827-07
 Misc : 6.61G/5.00ml/MSVOA D/SOIL
 ALS Vial : 9 Sample Multiplier: 1

Instrument :
 MSVOA_D
ClientSampleId :
 789UMR-TP11-0006-01

Quant Time: Aug 29 00:45:36 2020
 Quant Method : Z:\VOASRV\HPCHEM1\MSVOA_D\METHOD\82D082120S.M
 Quant Title : SW846 8260
 QLast Update : Fri Aug 21 13:36:12 2020
 Response via : Initial Calibration

Internal Standards	R.T.	QIon	Response	Conc	Units	Dev(Min)
1) Pentafluorobenzene	7.97	168	182452	50.00	ug/l	0.00
34) 1,4-Difluorobenzene	8.86	114	259237	50.00	ug/l	0.00
63) Chlorobenzene-d5	11.64	117	219392	50.00	ug/l	0.00
72) 1,4-Dichlorobenzene-d4	13.57	152	92434	50.00	ug/l	0.00

System Monitoring Compounds

33) 1,2-Dichloroethane-d4	8.33	65	102321	57.20	ug/l	0.00
Spiked Amount				50.000		
			Recovery	=	114.40%	
35) Dibromofluoromethane	7.91	113	77572	47.85	ug/l	0.00
Spiked Amount				50.000		
			Recovery	=	95.70%	
50) Toluene-d8	10.34	98	290018	48.90	ug/l	0.00
Spiked Amount				50.000		
			Recovery	=	97.80%	
62) 4-Bromofluorobenzene	12.63	95	89721	42.63	ug/l	0.00
Spiked Amount				50.000		
			Recovery	=	85.26%	

Target Compounds

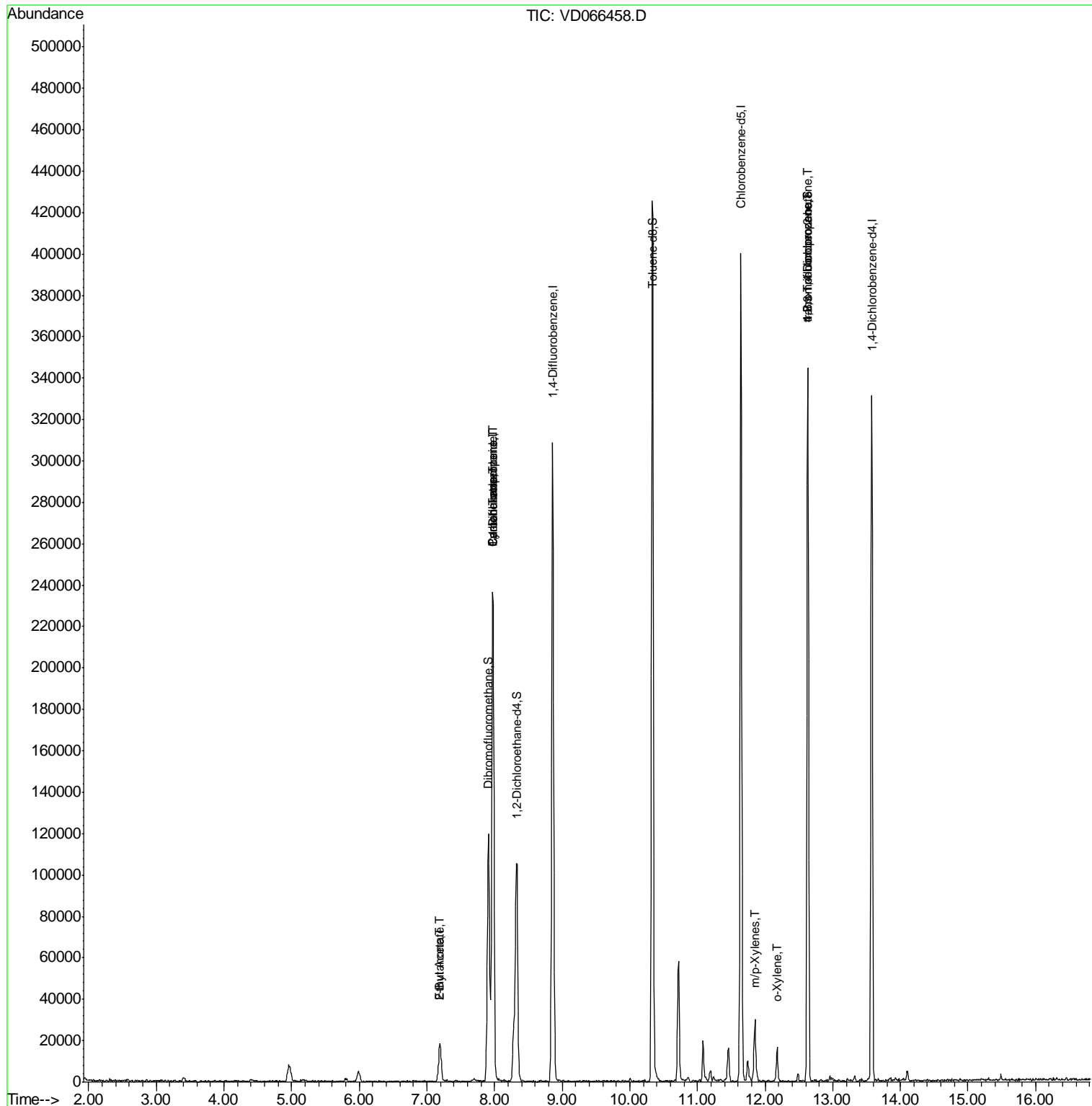
						Qvalue
11) Tert butyl alcohol	5.21	59	406	Below Cal	#	71
20) Methylene Chloride	4.96	84	6018	Below Cal	#	77
25) 2-Butanone	7.19	43	1067	2.915	ug/l #	47
31) Cyclohexane	7.97	56	4567	1.839	ug/l #	49
36) 1,1-Dichloropropene	7.97	75	12457	5.266	ug/l #	52
37) Ethyl Acetate	7.19	43	1067	1.326	ug/l #	1
38) Carbon Tetrachloride	7.98	117	18578	6.028	ug/l #	16
68) m/p-Xylenes	11.86	106	9998	3.414	ug/l	87
69) o-Xylene	12.18	106	4366	1.603	ug/l	88
76) 1,2,3-Trichloropropane	12.63	75	54406	83.666	ug/l #	1
81) trans-1,4-Dichloro-2-buten	12.63	75	54406	177.596	ug/l #	6

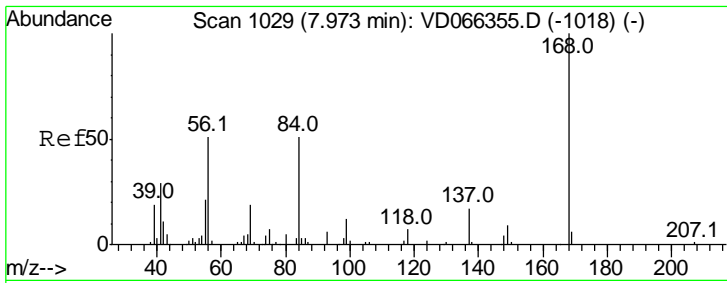
(#) = qualifier out of range (m) = manual integration (+) = signals summed

Data Path : Z:\VOASRV\HPCHEM1\MSVOA D\DATA\VD082820\
 Data File : VD066458.D
 Acq On : 28 Aug 2020 14:27
 Operator : VA/SY
 Sample : L3827-07
 Misc : 6.61G/5.00ml/MSVOA D/SOIL
 ALS Vial : 9 Sample Multiplier: 1

Instrument :
 MSVOA_D
 ClientSampleId :
 789UMR-TP11-0006-01

Quant Time: Aug 29 00:45:36 2020
 Quant Method : Z:\VOASRV\HPCHEM1\MSVOA_D\METHOD\82D082120S.M
 Quant Title : SW846 8260
 QLast Update : Fri Aug 21 13:36:12 2020
 Response via : Initial Calibration

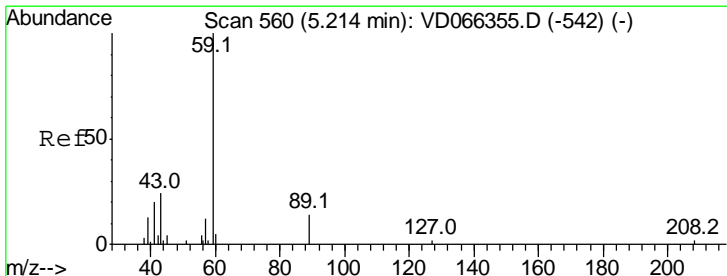
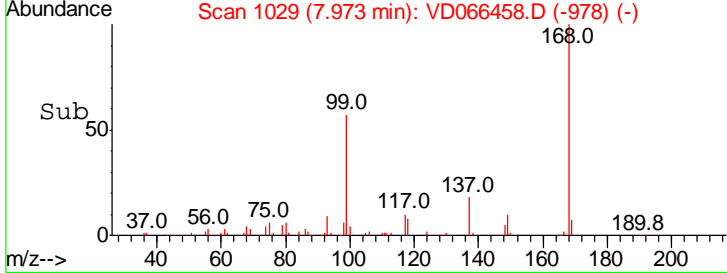
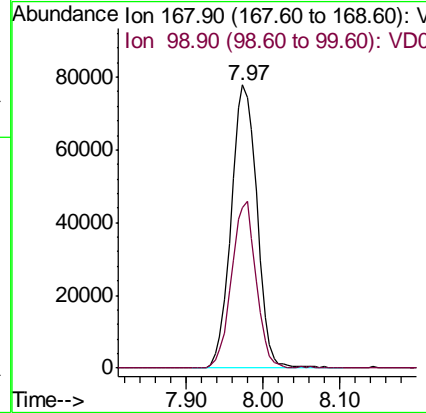
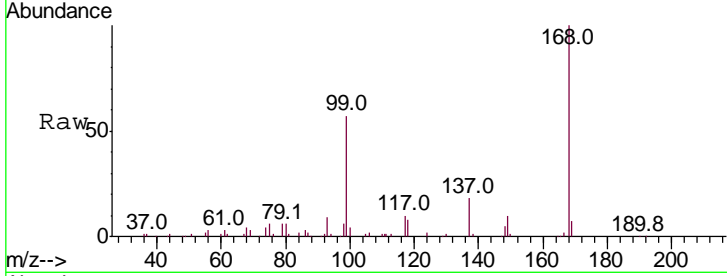




#1
 Pentafluorobenzene
 Concen: 50.000 ug/l
 RT: 7.97 min Scan# 1029
 Delta R.T. 0.00 min
 Lab File: VD066458.D
 Acq: 28 Aug 2020 14:27

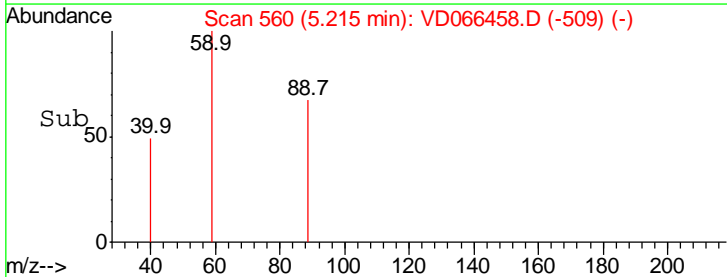
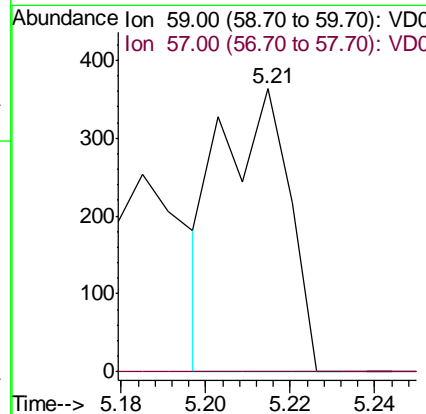
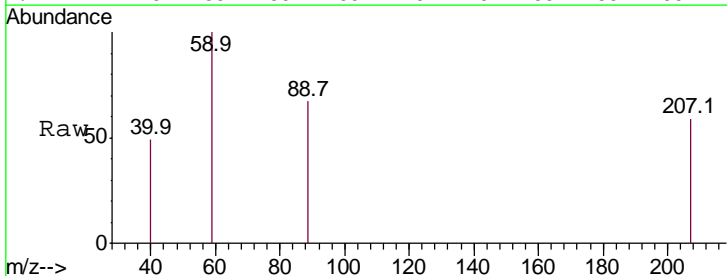
Instrument :
 MSVOA_D
ClientSampled :
 789UMR-TP11-0006-01

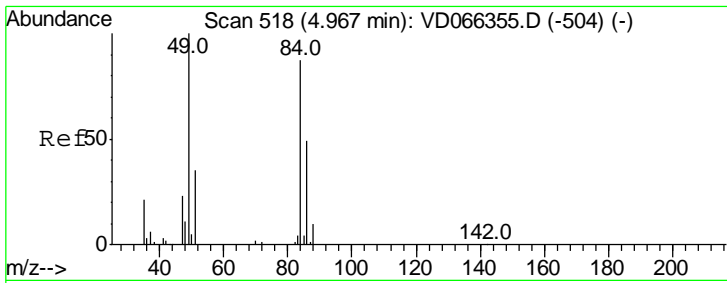
Tgt Ion: 168 Resp: 182452
 Ion Ratio Lower Upper
 168 100
 99 56.8 45.4 68.0



#11
 Tert butyl alcohol
 Concen: Below Cal
 RT: 5.21 min Scan# 560
 Delta R.T. 0.00 min
 Lab File: VD066458.D
 Acq: 28 Aug 2020 14:27

Tgt Ion: 59 Resp: 406
 Ion Ratio Lower Upper
 59 100
 57 0.0 9.0 13.4#

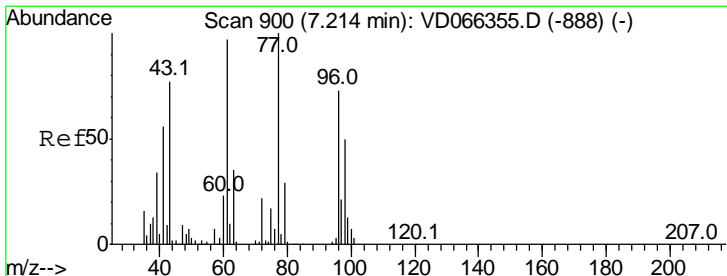
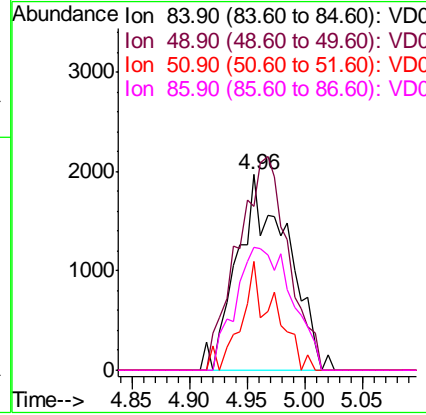
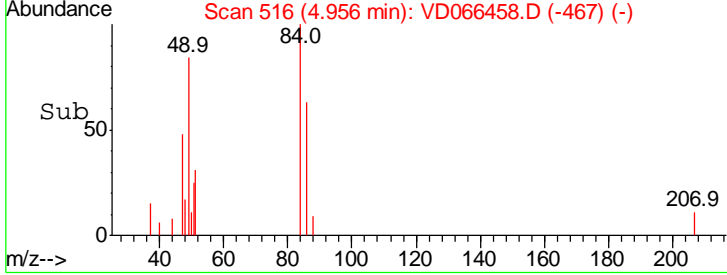
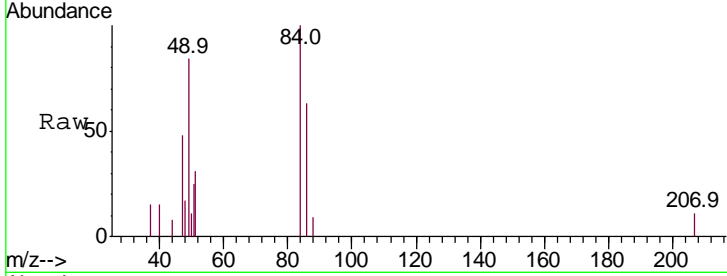




#20
 Methylene Chloride
 Concen: Below Cal
 RT: 4.96 min Scan# 516
 Delta R.T. -0.01 min
 Lab File: VD066458.D
 Acq: 28 Aug 2020 14:27

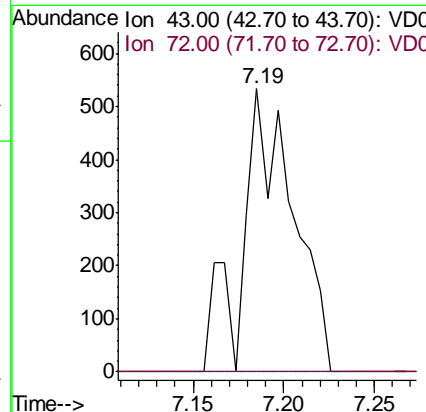
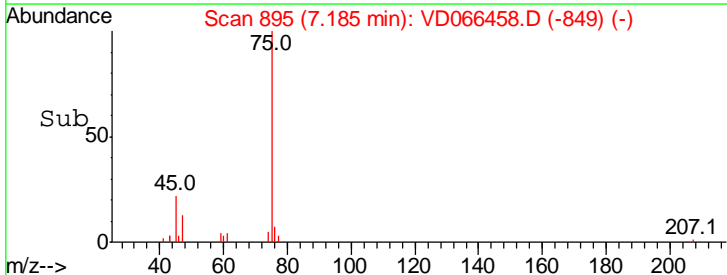
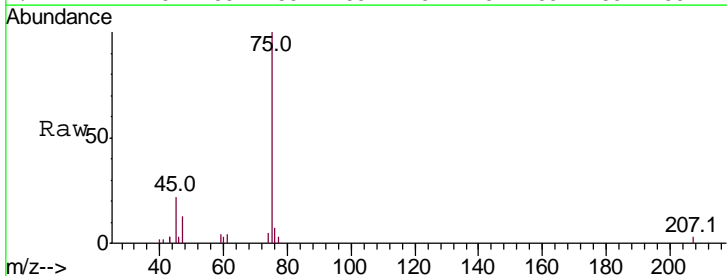
Instrument : MSVOA_D
 ClientSampleId : 789UMR-TP11-0006-01

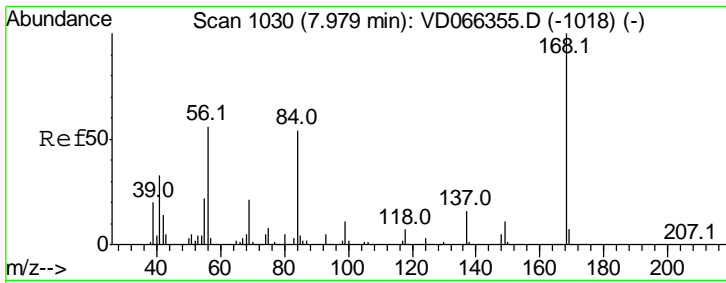
Tgt Ion	Resp	Lower	Upper
84	100		
49	83.6	92.5	138.7#
51	55.8	32.5	48.7#
86	62.6	45.0	67.6



#25
 2-Butanone
 Concen: 2.915 ug/l
 RT: 7.19 min Scan# 895
 Delta R.T. -0.03 min
 Lab File: VD066458.D
 Acq: 28 Aug 2020 14:27

Tgt Ion	Resp	Lower	Upper
43	100		
72	0.0	22.5	33.7#

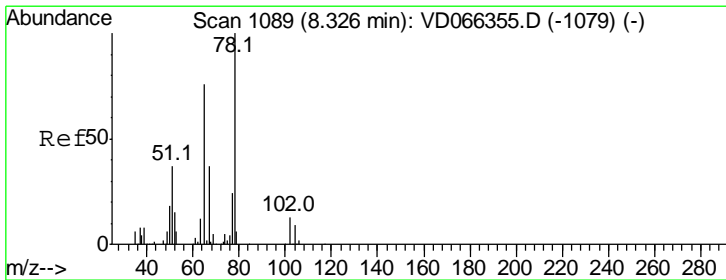
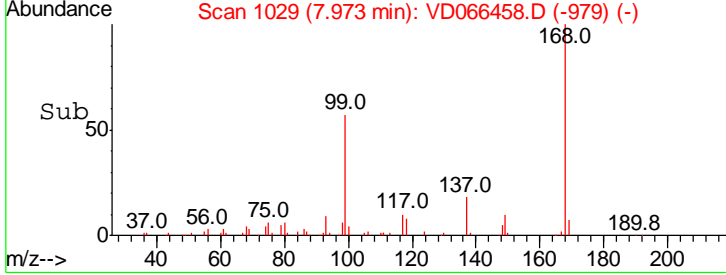
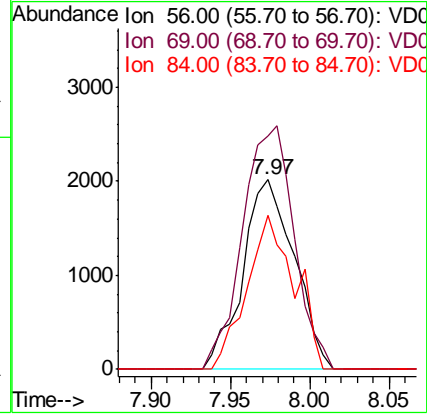
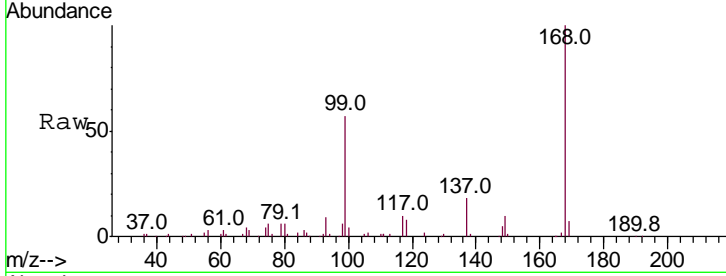




#31
 Cyclohexane
 Concen: 1.839 ug/l
 RT: 7.97 min Scan# 1029
 Delta R.T. -0.01 min
 Lab File: VD066458.D
 Acq: 28 Aug 2020 14:27

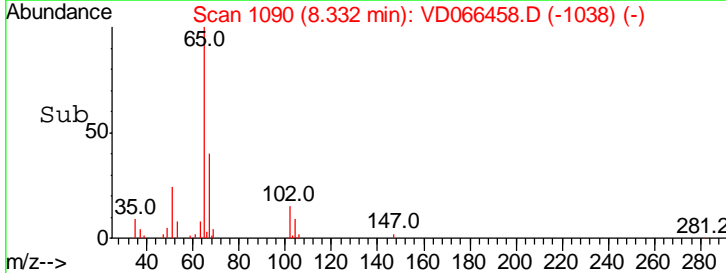
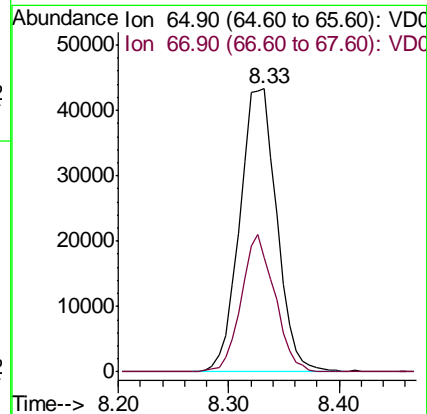
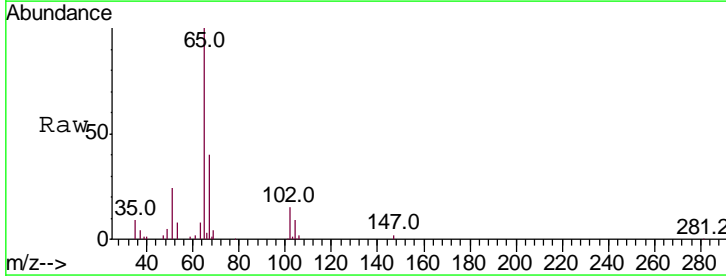
Instrument :
 MSVOA_D
 ClientSampled :
 789UMR-TP11-0006-01

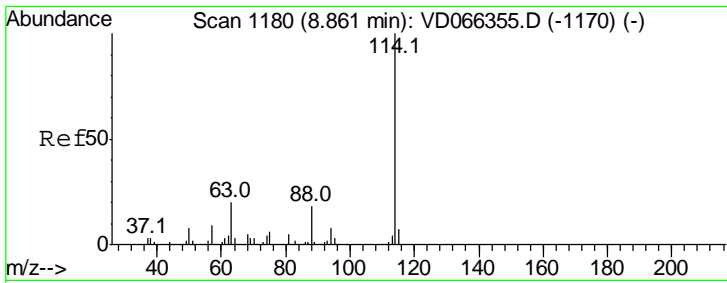
Tgt Ion	Resp	Lower	Upper
56	100		
69	123.2	29.6	44.4#
84	81.4	76.6	115.0



#33
 1,2-Dichloroethane-d4
 Concen: 57.203 ug/l
 RT: 8.33 min Scan# 1090
 Delta R.T. 0.01 min
 Lab File: VD066458.D
 Acq: 28 Aug 2020 14:27

Tgt Ion	Resp	Lower	Upper
65	100		
67	43.8	0.0	101.6

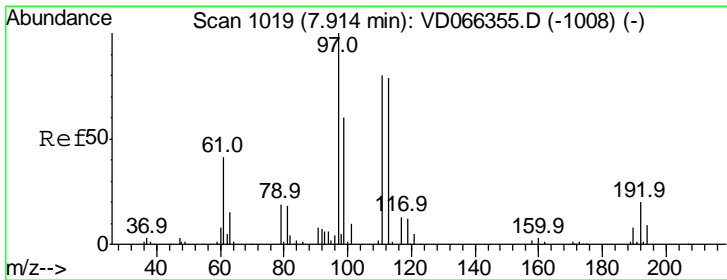
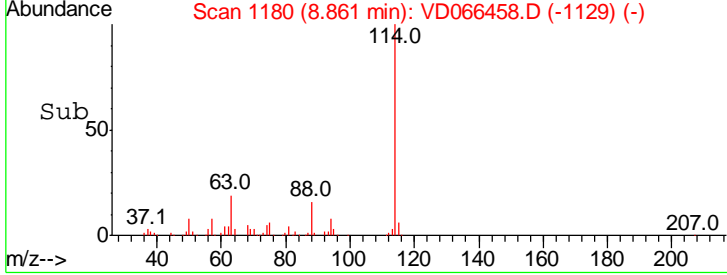
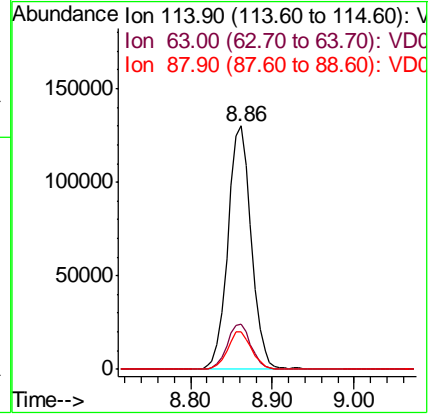
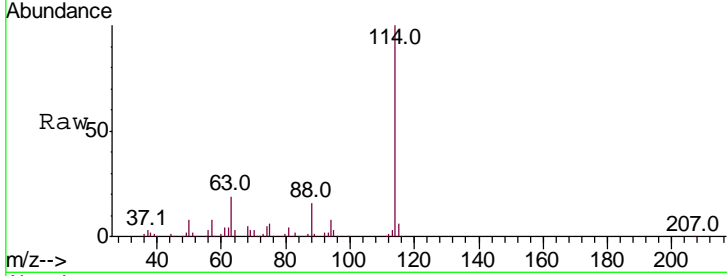




#34
 1,4-Difluorobenzene
 Concen: 50.000 ug/l
 RT: 8.86 min Scan# 1180
 Delta R.T. 0.00 min
 Lab File: VD066458.D
 Acq: 28 Aug 2020 14:27

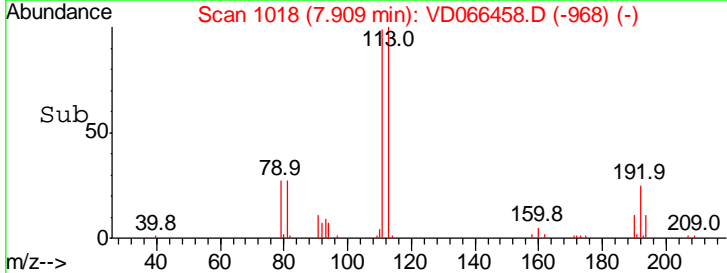
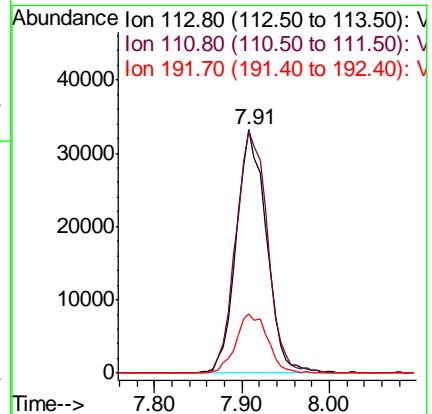
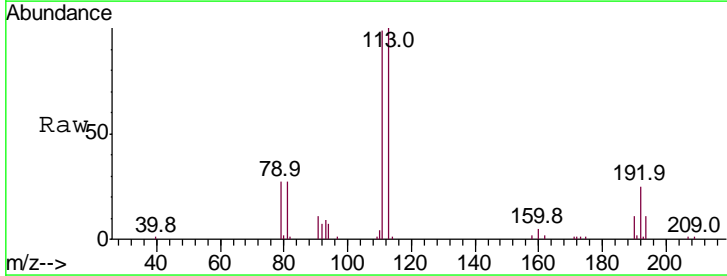
Instrument :
 MSVOA_D
ClientSampleId :
 789UMR-TP11-0006-01

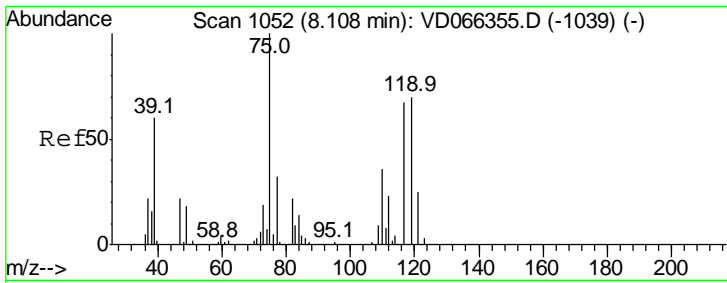
Tgt Ion	Resp	Lower	Upper
114	100		
63	18.5	0.0	40.8
88	15.5	0.0	35.4



#35
 Dibromofluoromethane
 Concen: 47.853 ug/l
 RT: 7.91 min Scan# 1018
 Delta R.T. -0.01 min
 Lab File: VD066458.D
 Acq: 28 Aug 2020 14:27

Tgt Ion	Resp	Lower	Upper
113	100		
111	104.4	80.3	120.5
192	25.7	19.0	28.6

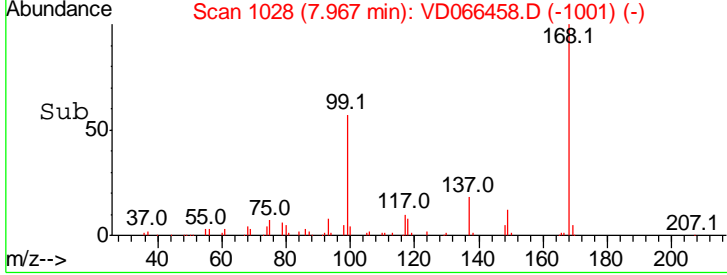
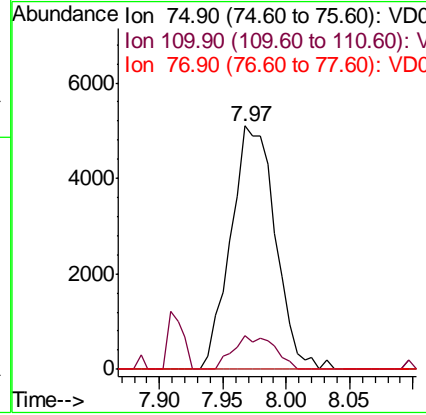
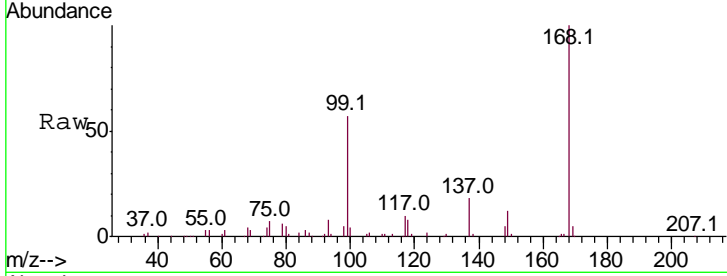




#36
 1,1-Dichloropropene
 Concen: 5.266 ug/l
 RT: 7.97 min Scan# 1028
 Delta R.T. -0.14 min
 Lab File: VD066458.D
 Acq: 28 Aug 2020 14:27

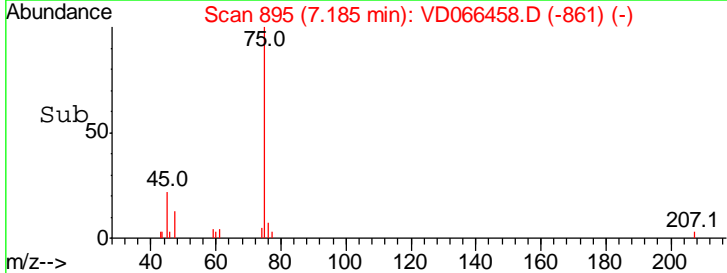
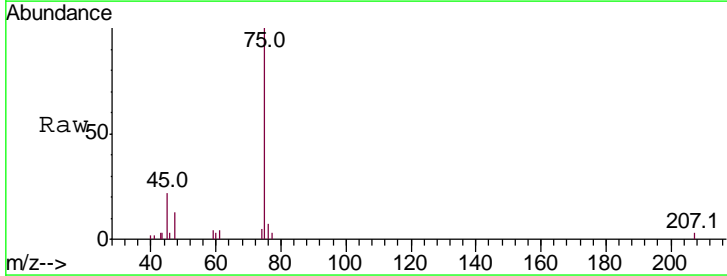
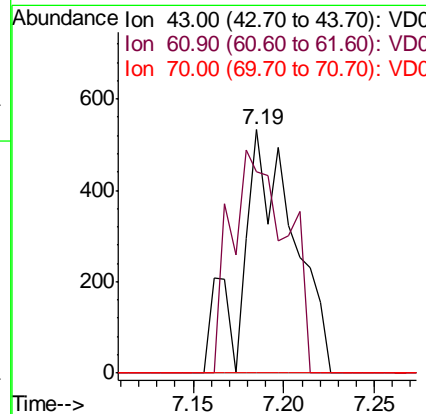
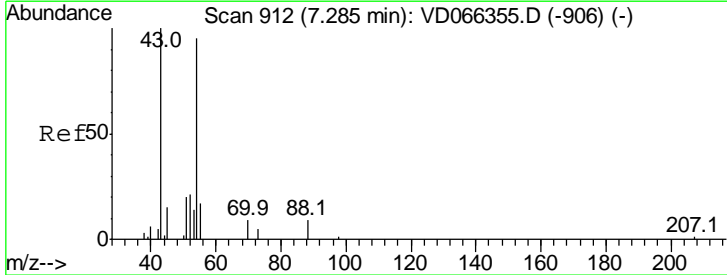
Instrument :
 MSVOA_D
 ClientSampled :
 789UMR-TP11-0006-01

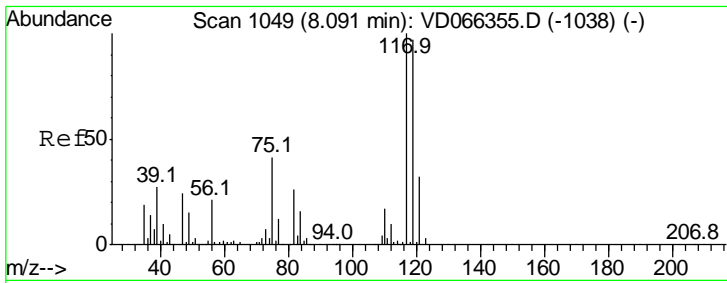
Tgt Ion	Resp	Lower	Upper
75	12457		
110	12.8	18.7	56.1#
77	0.0	25.2	37.8#



#37
 Ethyl Acetate
 Concen: 1.326 ug/l
 RT: 7.19 min Scan# 895
 Delta R.T. -0.10 min
 Lab File: VD066458.D
 Acq: 28 Aug 2020 14:27

Tgt Ion	Resp	Lower	Upper
43	1067		
61	97.1	13.3	19.9#
70	0.0	3.5	5.3#

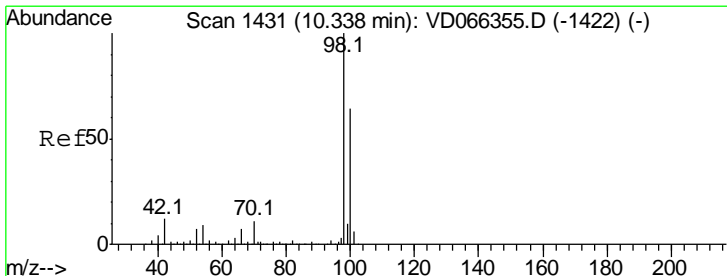
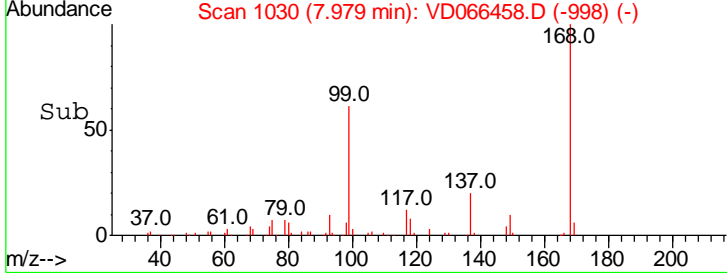
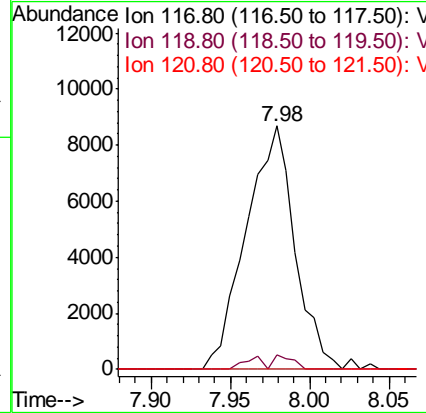
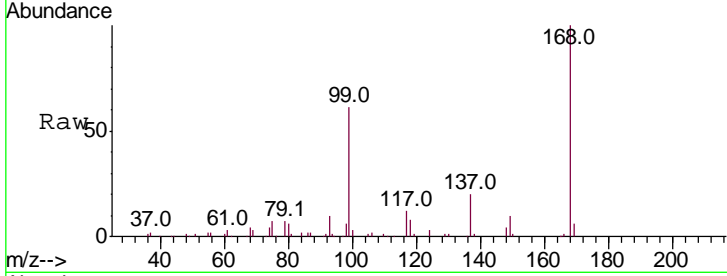




#38
 Carbon Tetrachloride
 Concen: 6.028 ug/l
 RT: 7.98 min Scan# 1030
 Delta R.T. -0.11 min
 Lab File: VD066458.D
 Acq: 28 Aug 2020 14:27

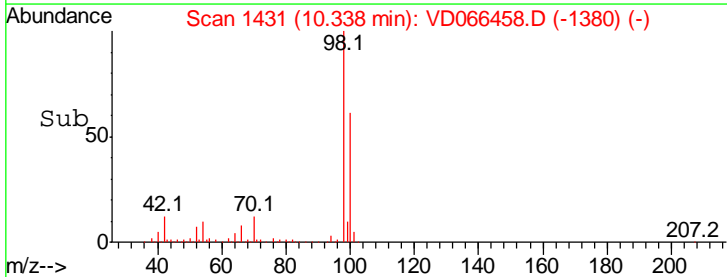
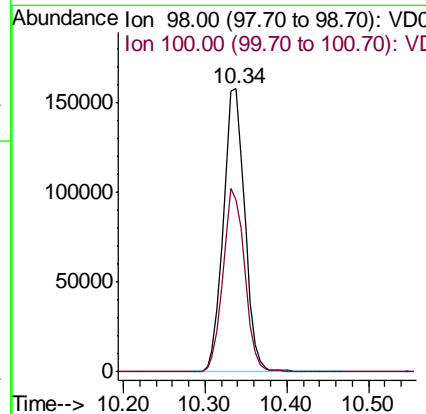
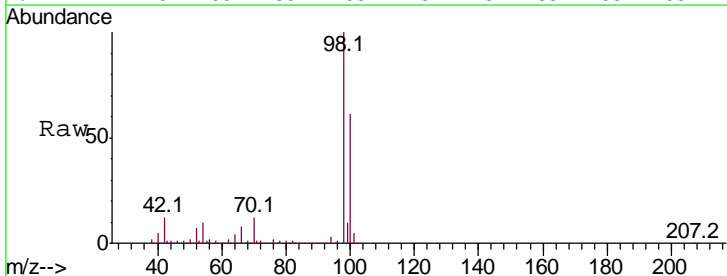
Instrument :
 MSVOA_D
 ClientSampleId :
 789UMR-TP11-0006-01

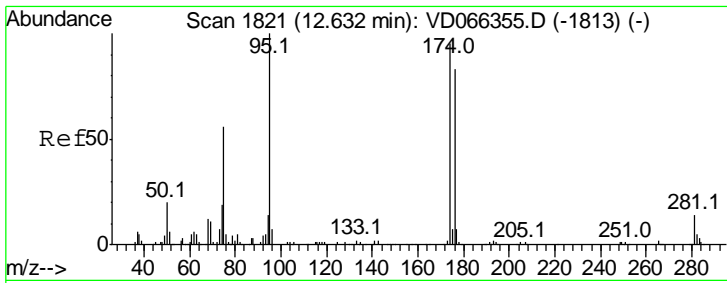
Tgt Ion	Resp	Lower	Upper
117	100		
119	6.0	77.2	115.8#
121	0.0	25.8	38.8#



#50
 Toluene-d8
 Concen: 48.898 ug/l
 RT: 10.34 min Scan# 1431
 Delta R.T. 0.00 min
 Lab File: VD066458.D
 Acq: 28 Aug 2020 14:27

Tgt Ion	Resp	Lower	Upper
98	100		
100	65.3	53.0	79.4

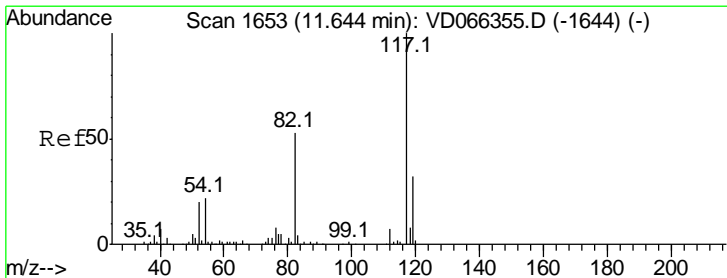
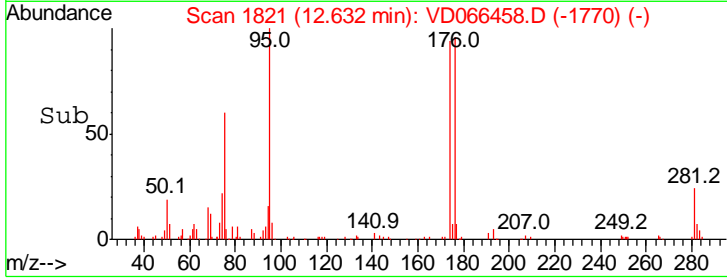
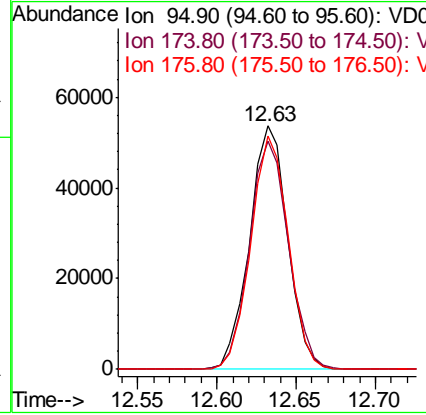
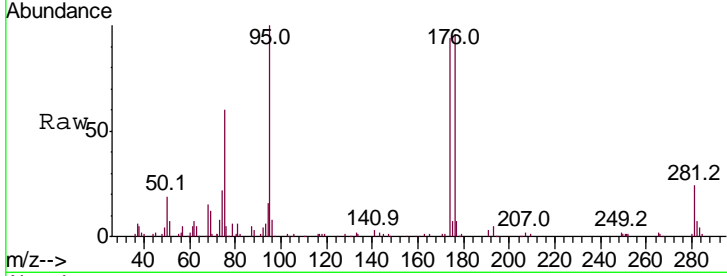




#62
 4-Bromofluorobenzene
 Concen: 42.630 ug/l
 RT: 12.63 min Scan# 1821
 Delta R.T. 0.00 min
 Lab File: VD066458.D
 Acq: 28 Aug 2020 14:27

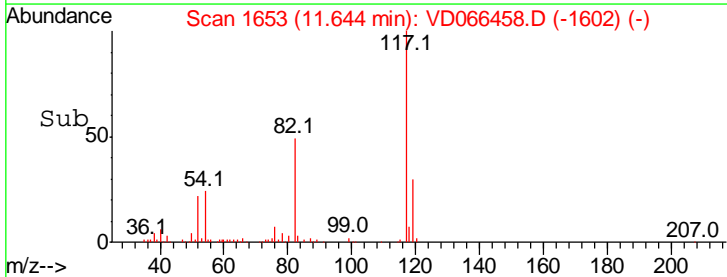
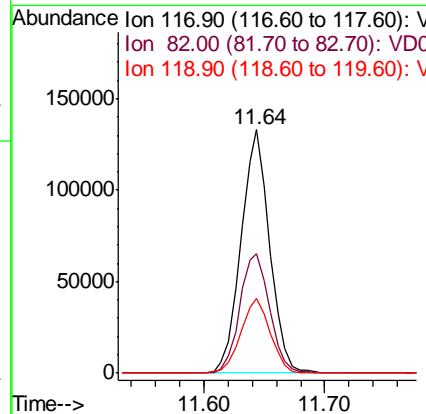
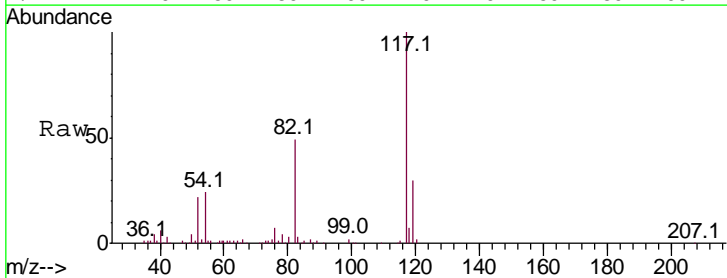
Instrument : MSVOA_D
 ClientSampled : 789UMR-TP11-0006-01

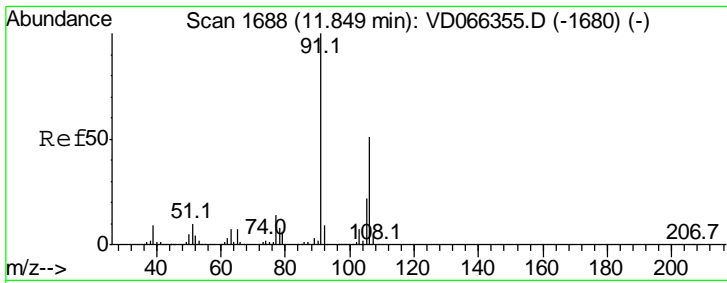
Tgt Ion	Resp	Lower	Upper
95	100		
174	95.8	0.0	183.4
176	94.3	0.0	173.8



#63
 Chlorobenzene-d5
 Concen: 50.000 ug/l
 RT: 11.64 min Scan# 1653
 Delta R.T. 0.00 min
 Lab File: VD066458.D
 Acq: 28 Aug 2020 14:27

Tgt Ion	Resp	Lower	Upper
117	100		
82	49.0	42.8	64.2
119	30.5	25.8	38.8

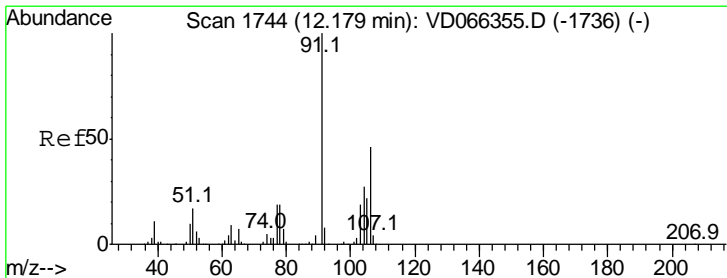
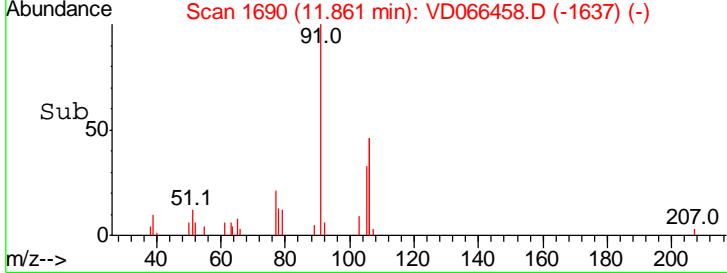
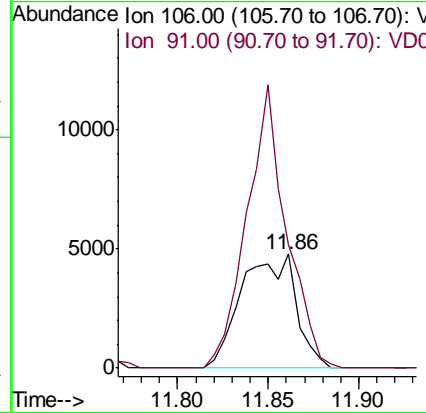
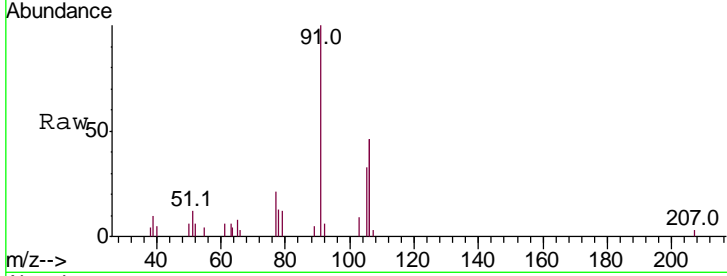




#68
 m/p-Xylenes
 Concen: 3.414 ug/l
 RT: 11.86 min Scan# 1690
 Delta R.T. 0.01 min
 Lab File: VD066458.D
 Acq: 28 Aug 2020 14:27

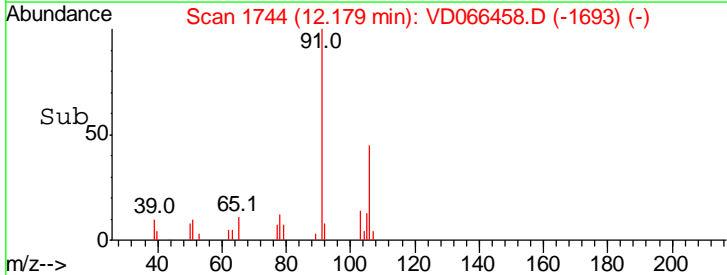
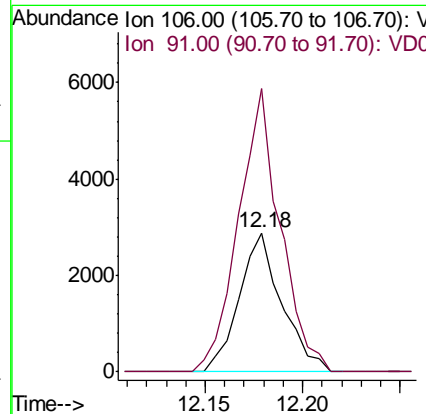
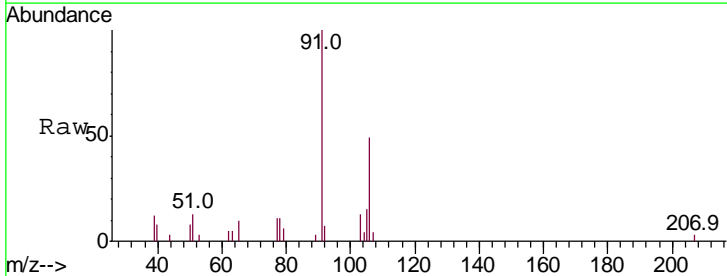
Instrument : MSVOA_D
 ClientSampleId : 789UMR-TP11-0006-01

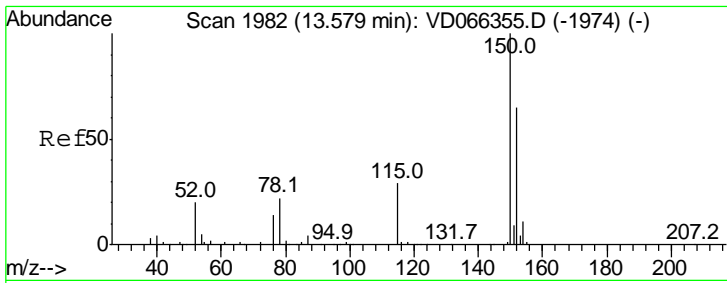
Tgt Ion:106 Resp: 9998
 Ion Ratio Lower Upper
 106 100
 91 180.8 160.7 241.1



#69
 o-Xylene
 Concen: 1.603 ug/l
 RT: 12.18 min Scan# 1744
 Delta R.T. 0.00 min
 Lab File: VD066458.D
 Acq: 28 Aug 2020 14:27

Tgt Ion:106 Resp: 4366
 Ion Ratio Lower Upper
 106 100
 91 198.9 109.1 327.3

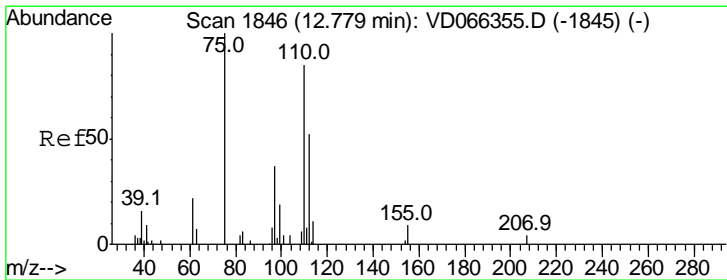
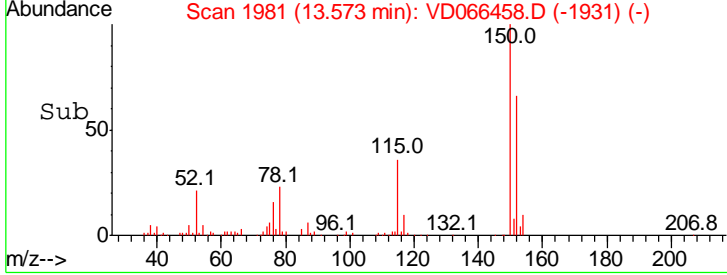
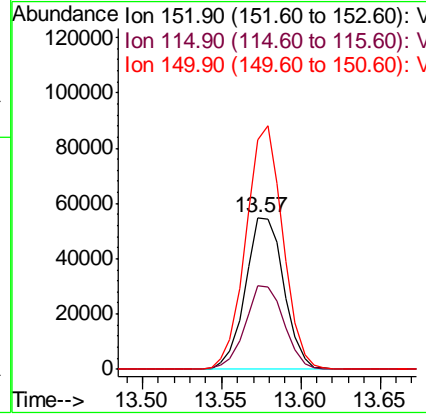
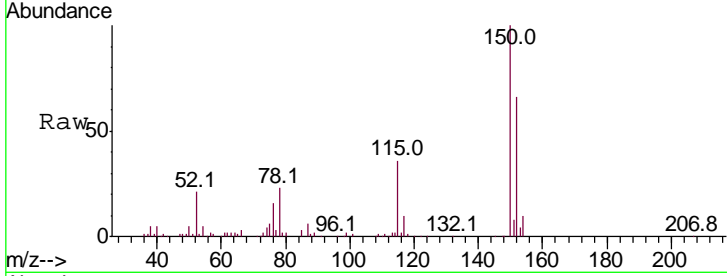




#72
 1,4-Dichlorobenzene-d4
 Concen: 50.000 ug/l
 RT: 13.57 min Scan# 1981
 Delta R.T. -0.01 min
 Lab File: VD066458.D
 Acq: 28 Aug 2020 14:27

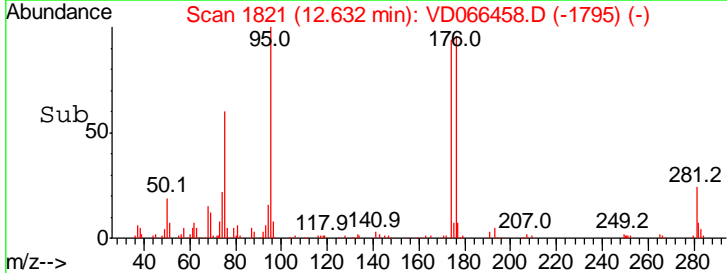
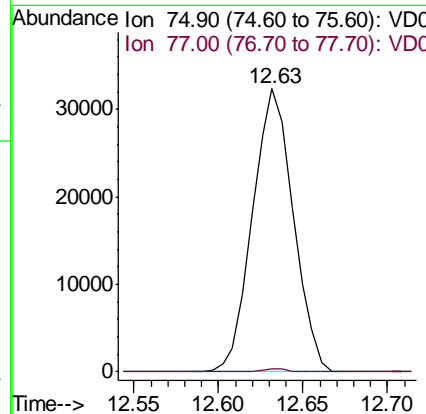
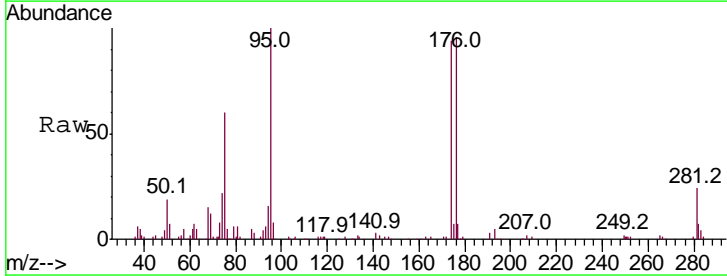
Instrument : MSVOA_D
 ClientSampleId : 789UMR-TP11-0006-01

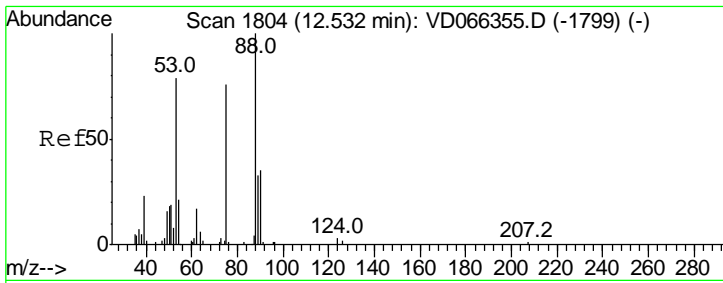
Tgt Ion	Resp	Lower	Upper
152	100		
115	55.4	28.3	85.0
150	154.3	0.0	343.2



#76
 1,2,3-Trichloropropane
 Concen: 83.666 ug/l
 RT: 12.63 min Scan# 1821
 Delta R.T. -0.15 min
 Lab File: VD066458.D
 Acq: 28 Aug 2020 14:27

Tgt Ion	Resp	Lower	Upper
75	100		
77	0.6	182.9	548.9#





#81
 trans-1,4-Dichloro-2-butene
 Concen: 177.596 ug/l
 RT: 12.63 min Scan# 1821
 Delta R.T. 0.10 min
 Lab File: VD066458.D
 Acq: 28 Aug 2020 14:27

Instrument : MSVOA_D
 ClientSampleId : 789UMR-TP11-0006-01

Tot Ion	Resp	Lower	Upper
75	54406		
Ion Ratio			
75	100		
53	0.0	87.4	131.2#
89	0.0	39.4	59.0#

