

Data Path : Z:\VOASRV\HPCHEM1\MSVOA D\DATA\VD082820\
 Data File : VD066469.D
 Acq On : 28 Aug 2020 19:31
 Operator : VA/SY
 Sample : L3828-03
 Misc : 6.89G/5.00ml/MSVOA D/SOIL
 ALS Vial : 20 Sample Multiplier: 1

Instrument :
 MSVOA_D
 ClientSampled :
 BS-2

Integration Parameters: RTEINT.P

Integrator: RTE
 Smoothing : ON Filtering: 5
 Sampling : 1 Min Area: 3 % of largest Peak
 Start Thrs: 0.2 Max Peaks: 100
 Stop Thrs : 0 Peak Location: TOP

If leading or trailing edge < 100 prefer < Baseline drop else tangent >
 Peak separation: 5

Method : Z:\VOASRV\HPCHEM1\MSVOA_D\METHOD\82D082120S.M
 Title : SW846 8260

Signal : TIC

peak #	R.T. min	first scan	max scan	last scan	PK TY	peak height	corr. area	corr. % max.	% of total
1	4.962	504	517	526	rVB4	9297	27075	3.09%	0.259%
2	7.914	1008	1019	1023	rBV	118644	280582	32.03%	2.680%
3	7.973	1023	1029	1043	rVB2	241017	547348	62.49%	5.227%
4	8.326	1079	1089	1099	rBV	104915	234226	26.74%	2.237%
5	8.861	1171	1180	1193	rBV	290599	601644	68.69%	5.746%
6	10.332	1421	1430	1440	rBV	427027	796409	90.92%	7.606%
7	11.126	1558	1565	1571	rBV2	17731	31428	3.59%	0.300%
8	11.450	1613	1620	1630	rVB3	44032	90672	10.35%	0.866%
9	11.644	1645	1653	1664	rBV	423212	718862	82.07%	6.865%
10	11.773	1670	1675	1680	rBV2	34045	61194	6.99%	0.584%
11	11.826	1680	1684	1689	rVV3	65819	116154	13.26%	1.109%
12	11.867	1689	1691	1699	rVV5	29833	60801	6.94%	0.581%
13	11.938	1699	1703	1707	rVB3	6795	10991	1.25%	0.105%
14	12.167	1733	1742	1750	rBV3	52912	148543	16.96%	1.419%
15	12.267	1756	1759	1763	rVB3	8572	11101	1.27%	0.106%
16	12.355	1763	1774	1775	rBV6	19538	40297	4.60%	0.385%
17	12.473	1789	1794	1799	rVB2	46242	74954	8.56%	0.716%
18	12.526	1799	1803	1805	rBV4	9871	15015	1.71%	0.143%
19	12.555	1805	1808	1810	rBV4	8355	10099	1.15%	0.096%
20	12.585	1810	1813	1816	rVB4	15141	18440	2.11%	0.176%
21	12.632	1816	1821	1827	rBV	375050	635282	72.53%	6.067%
22	12.761	1841	1843	1845	rVB3	14838	11793	1.35%	0.113%
23	12.797	1845	1849	1856	rVB3	72893	140225	16.01%	1.339%
24	12.879	1856	1863	1866	rBV5	53730	110719	12.64%	1.057%
25	12.961	1866	1877	1882	rBV3	168161	423403	48.34%	4.044%
26	13.008	1882	1885	1891	rVB2	103636	167131	19.08%	1.596%
27	13.097	1891	1900	1904	rBV5	65552	168216	19.20%	1.607%
28	13.155	1904	1910	1911	rBV2	48750	83677	9.55%	0.799%
29	13.185	1911	1915	1923	rVB2	127600	235186	26.85%	2.246%
30	13.244	1923	1925	1928	rBV4	9168	10566	1.21%	0.101%
31	13.320	1934	1938	1939	rBV3	24133	29997	3.42%	0.286%
32	13.397	1948	1951	1955	rVB3	33136	42238	4.82%	0.403%
33	13.467	1955	1963	1967	rBV4	164677	388941	44.40%	3.714%
34	13.508	1967	1970	1973	rVV3	90899	134540	15.36%	1.285%

Data Path : Z:\VOASRV\HPCHEM1\MSVOA D\DATA\VD082820\
 Data File : VD066469.D
 Acq On : 28 Aug 2020 19:31
 Operator : VA/SY
 Sample : L3828-03
 Misc : 6.89G/5.00ml/MSVOA D/SOIL
 ALS Vial : 20 Sample Multiplier: 1

Instrument :
 MSVOA_D
 ClientSampleId :
 BS-2

Integration Parameters: RTEINT.P

Integrator: RTE
 Smoothing : ON
 Sampling : 1
 Start Thrs: 0.2
 Stop Thrs : 0

Filtering: 5
 Min Area: 3 % of largest Peak
 Max Peaks: 100
 Peak Location: TOP

If leading or trailing edge < 100 prefer < Baseline drop else tangent >
 Peak separation: 5

Method : Z:\VOASRV\HPCHEM1\MSVOA_D\METHOD\82D082120S.M
 Title : SW846 8260

35	13.579	1973	1982	1990	rVB	478936	875946	100.00%	8.365%
36	13.649	1990	1994	1999	rBV6	66922	106030	12.10%	1.013%
37	13.714	2000	2005	2010	rVB8	42243	90142	10.29%	0.861%
38	13.761	2010	2013	2017	rBV6	19299	32177	3.67%	0.307%
39	13.849	2022	2028	2031	rBV7	28220	59405	6.78%	0.567%
40	13.902	2031	2037	2042	rBV	321125	565337	64.54%	5.399%
41	14.002	2049	2054	2058	rBV5	61214	111939	12.78%	1.069%
42	14.226	2088	2092	2096	rBV6	17111	32827	3.75%	0.314%
43	14.285	2098	2102	2108	rVV7	57433	111346	12.71%	1.063%
44	14.349	2109	2113	2117	rVV5	62479	117466	13.41%	1.122%
45	14.408	2117	2123	2138	rVB5	241571	599904	68.49%	5.729%
46	14.526	2138	2143	2146	rBV4	36204	64221	7.33%	0.613%
47	14.573	2147	2151	2156	rVB	132646	206424	23.57%	1.971%
48	14.626	2156	2160	2167	rVB6	65280	128489	14.67%	1.227%
49	14.691	2167	2171	2174	rBV6	11738	21581	2.46%	0.206%
50	14.773	2178	2185	2190	rBV6	51110	102789	11.73%	0.982%
51	14.832	2190	2195	2199	rBV4	54538	109599	12.51%	1.047%
52	14.879	2199	2203	2210	rVB4	90474	185866	21.22%	1.775%
53	14.955	2211	2216	2220	rBV8	26772	50911	5.81%	0.486%
54	15.008	2220	2225	2228	rBV6	44557	86903	9.92%	0.830%
55	15.167	2247	2252	2253	rBV5	11978	18174	2.07%	0.174%
56	15.202	2253	2258	2262	rVB8	18490	30022	3.43%	0.287%
57	15.249	2262	2266	2267	rBV4	16067	19945	2.28%	0.190%
58	15.373	2282	2287	2293	rVB5	41648	76886	8.78%	0.734%
59	15.432	2293	2297	2304	rBV8	32704	78286	8.94%	0.748%
60	15.673	2334	2338	2340	rBV4	9552	14893	1.70%	0.142%
61	15.785	2352	2357	2364	rVB8	21490	48903	5.58%	0.467%
62	16.226	2424	2432	2439	rBV8	17413	46779	5.34%	0.447%

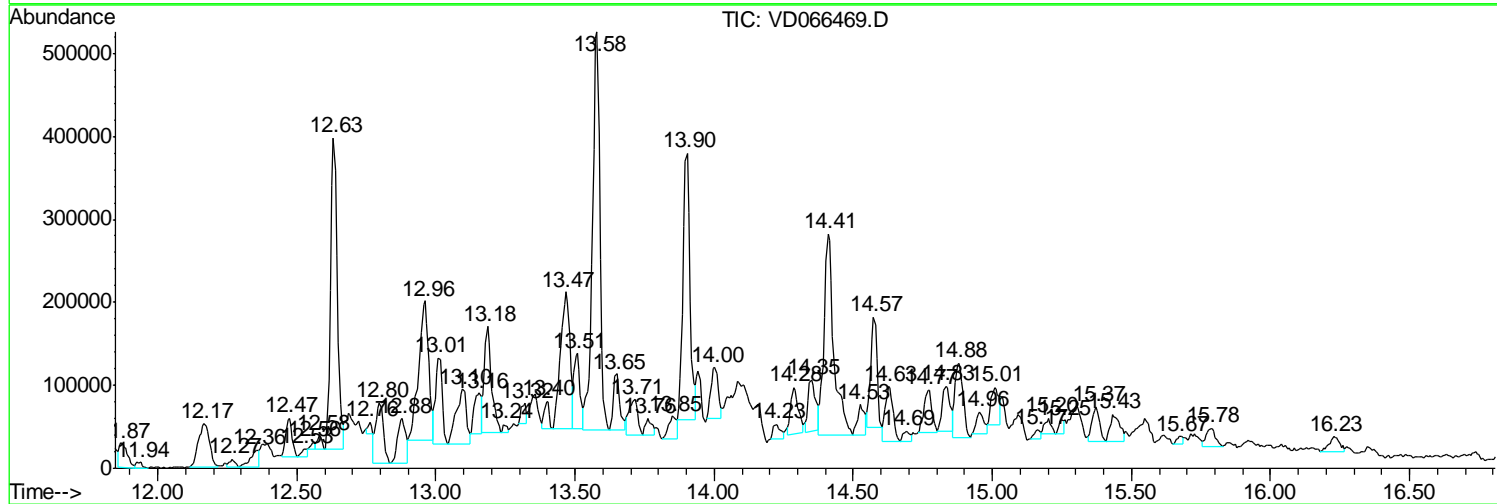
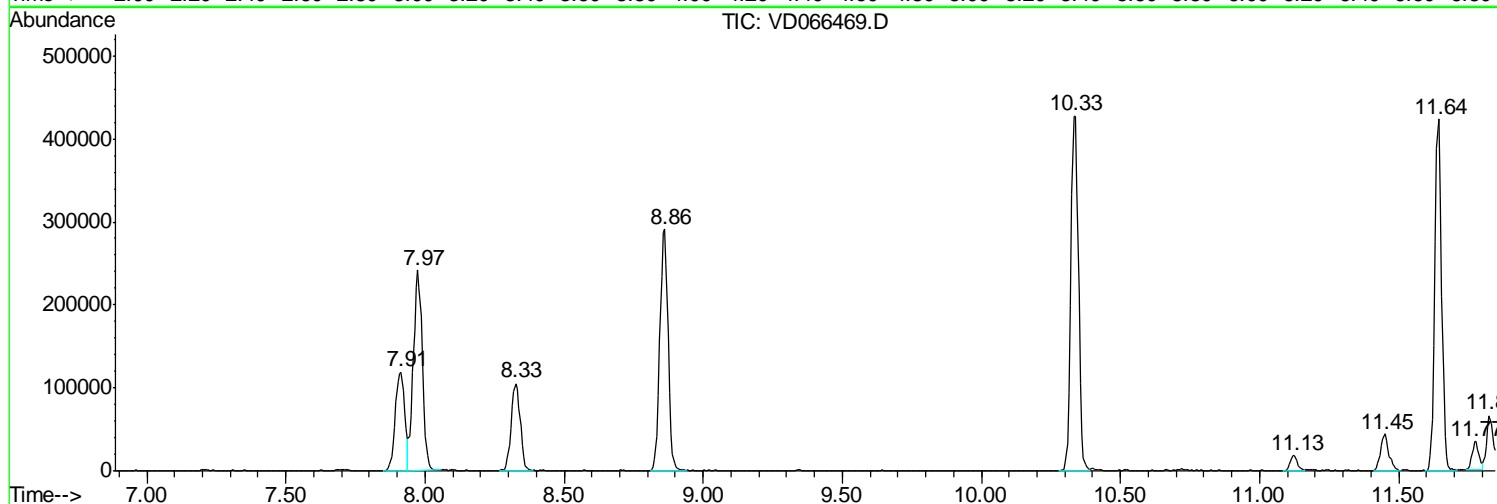
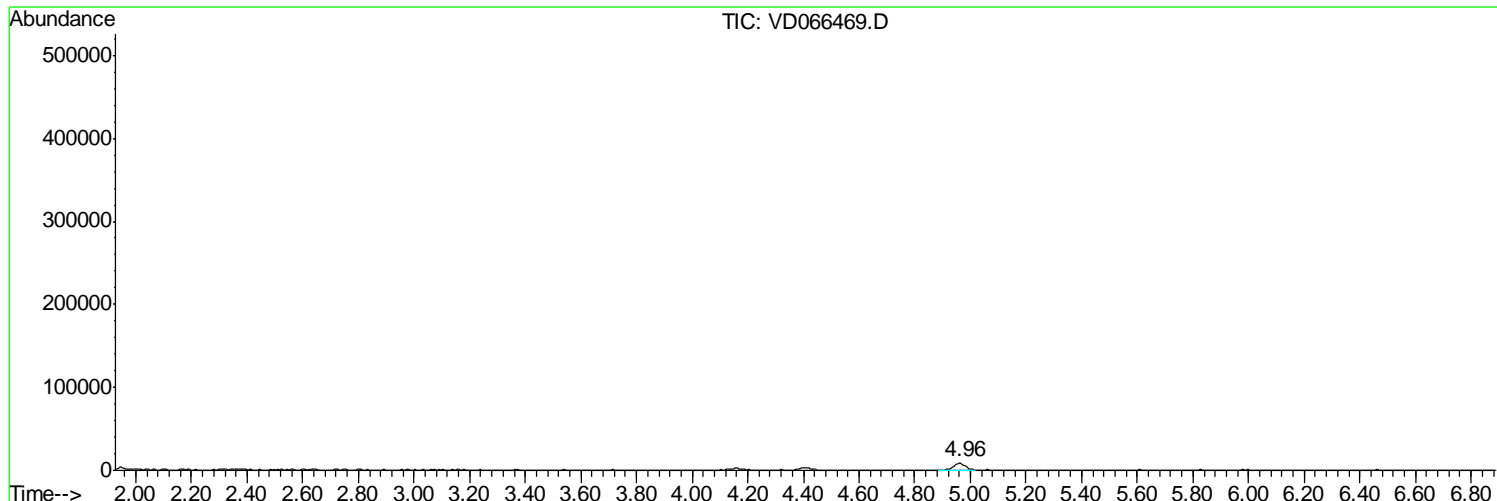
Sum of corrected areas: 10470939

Data Path : Z:\VOASRV\HPCHEM1\MSVOA D\DATA\VD082820\
 Data File : VD066469.D
 Acq On : 28 Aug 2020 19:31
 Operator : VA/SY
 Sample : L3828-03
 Misc : 6.89G/5.00ml/MSVOA D/SOIL
 ALS Vial : 20 Sample Multiplier: 1

Instrument :
 MSVOA_D
 ClientSampleId :
 BS-2

Quant Method : Z:\VOASRV\HPCHEM1\MSVOA_D\METHOD\82D082120S.M
 Quant Title : SW846 8260

TIC Library : C:\DATABASE\NIST11.L
 TIC Integration Parameters: LSCINT.P



Data Path : Z:\VOASRV\HPCHEM1\MSVOA D\DATA\VD082820\
 Data File : VD066469.D
 Acq On : 28 Aug 2020 19:31
 Operator : VA/SY
 Sample : L3828-03
 Misc : 6.89G/5.00ml/MSVOA D/SOIL
 ALS Vial : 20 Sample Multiplier: 1

Instrument :
 MSVOA_D
 ClientSampled :
 BS-2

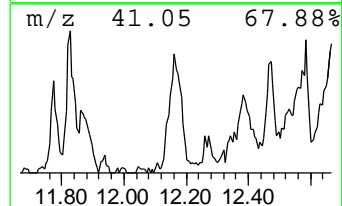
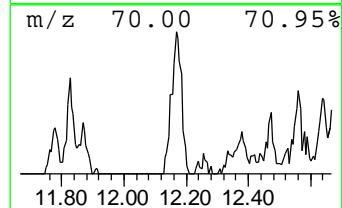
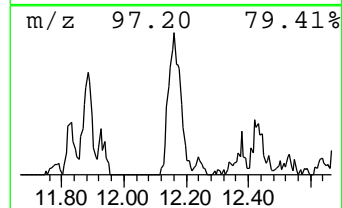
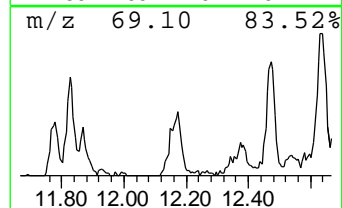
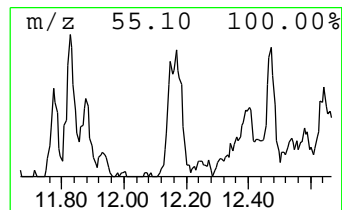
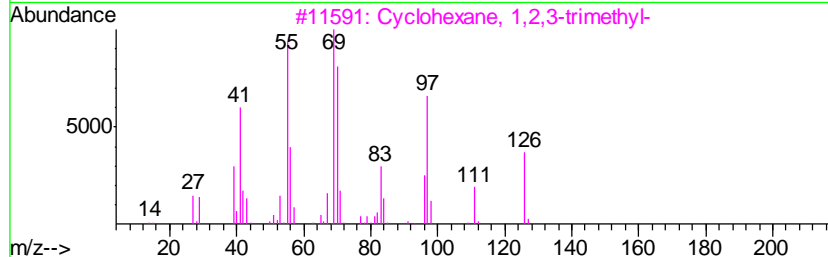
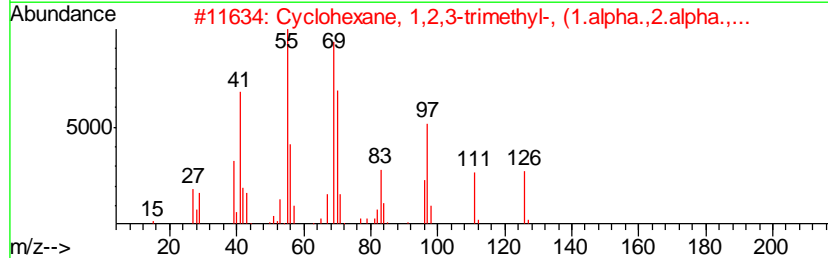
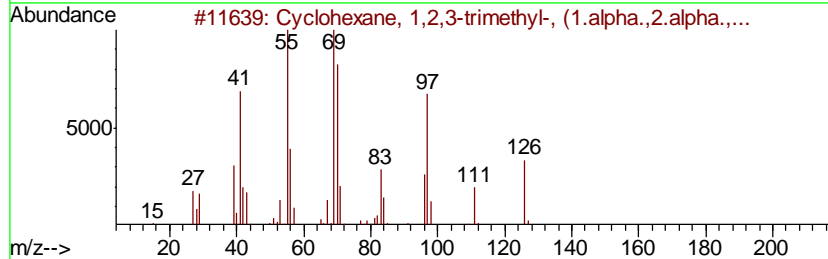
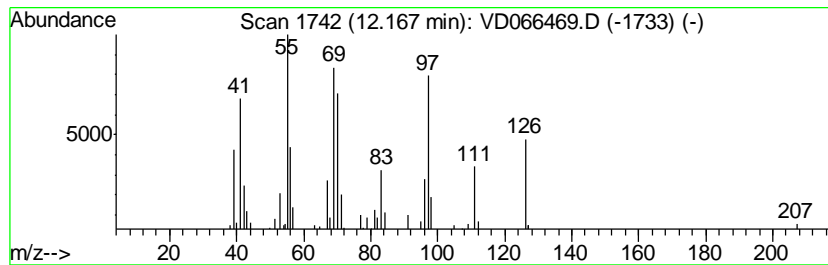
Quant Method : Z:\VOASRV\HPCHEM1\MSVOA_D\METHOD\82D082120S.M
 Quant Title : SW846 8260

TIC Library : C:\DATABASE\NIST11.L
 TIC Integration Parameters: LSCINT.P

 Peak Number 1 Cyclohexane, 1,2,3-trimethyl... Concentration Rank 8

R.T.	EstConc	Area	Relative to ISTD	R.T.
12.17	10.33 ug/l	148543	Chlorobenzene-d5	11.64

Hit#	of	Tentative ID	MW	MolForm	CAS#	Qual
1	5	Cyclohexane, 1,2,3-trimethyl-, (...	126	C9H18	001839-88-9	97
2		Cyclohexane, 1,2,3-trimethyl-, (...	126	C9H18	007667-55-2	95
3		Cyclohexane, 1,2,3-trimethyl-	126	C9H18	001678-97-3	95
4		2-Methyl-2-octene	126	C9H18	016993-86-5	43
5		2-Hexenal, 2-ethyl-	126	C8H14O	000645-62-5	41



Data Path : Z:\VOASRV\HPCHEM1\MSVOA D\DATA\VD082820\
 Data File : VD066469.D
 Acq On : 28 Aug 2020 19:31
 Operator : VA/SY
 Sample : L3828-03
 Misc : 6.89G/5.00ml/MSVOA D/SOIL
 ALS Vial : 20 Sample Multiplier: 1

Instrument :
 MSVOA_D
 ClientSampled :
 BS-2

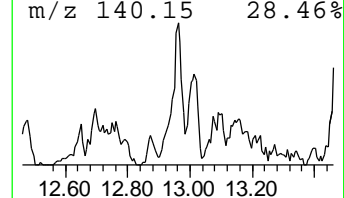
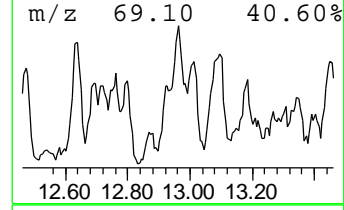
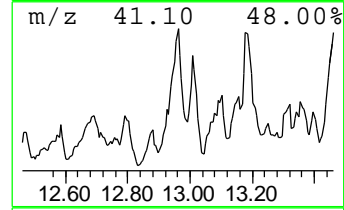
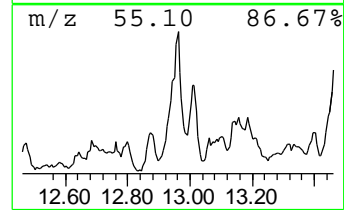
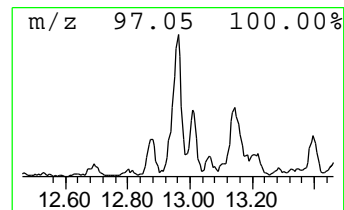
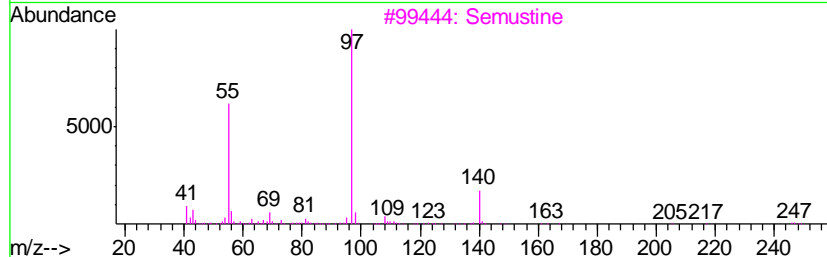
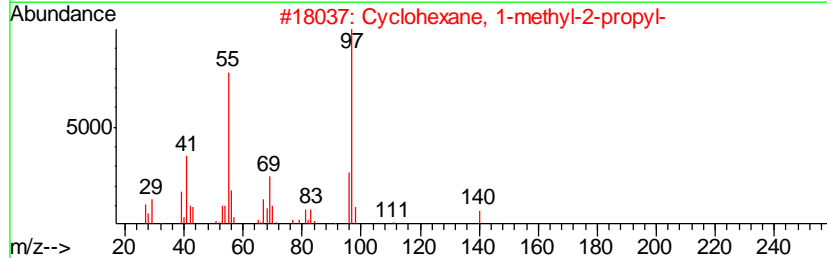
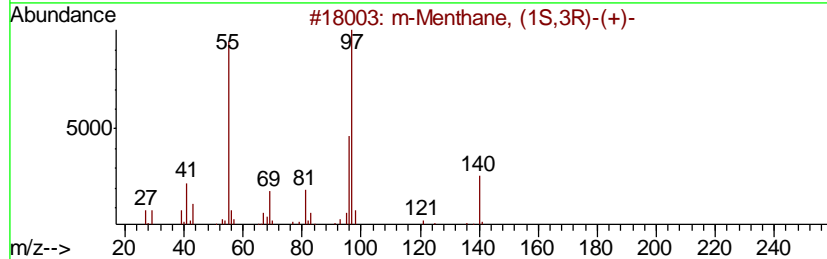
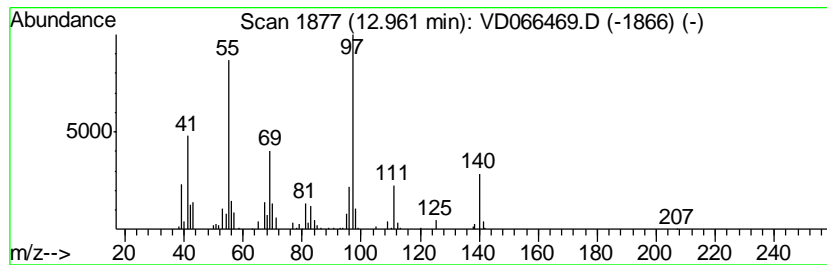
Quant Method : Z:\VOASRV\HPCHEM1\MSVOA_D\METHOD\82D082120S.M
 Quant Title : SW846 8260

TIC Library : C:\DATABASE\NIST11.L
 TIC Integration Parameters: LSCINT.P

 Peak Number 2 m-Menthane, (1S,3R)-(+)- Concentration Rank 3

R.T.	EstConc	Area	Relative to ISTD	R.T.
12.96	24.17 ug/l	423403	1,4-Dichlorobenzene-d4	13.58

Hit#	of	Tentative ID	MW	MolForm	CAS#	Qual
1	5	m-Menthane, (1S,3R)-(+)-	140	C10H20	013837-66-6	68
2		Cyclohexane, 1-methyl-2-propyl-	140	C10H20	004291-79-6	58
3		Semustine	247	C10H18ClN3O2	013909-09-6	53
4		cis-1-Ethyl-3-methyl-cyclohexane	126	C9H18	019489-10-2	53
5		Cyclohexane, 1-methyl-3-propyl-	140	C10H20	004291-80-9	53



Data Path : Z:\VOASRV\HPCHEM1\MSVOA D\DATA\VD082820\
 Data File : VD066469.D
 Acq On : 28 Aug 2020 19:31
 Operator : VA/SY
 Sample : L3828-03
 Misc : 6.89G/5.00ml/MSVOA D/SOIL
 ALS Vial : 20 Sample Multiplier: 1

Instrument :
 MSVOA_D
 ClientSampleID :
 BS-2

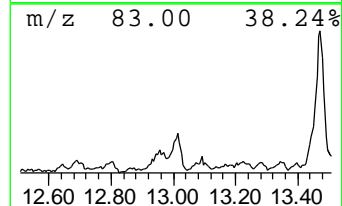
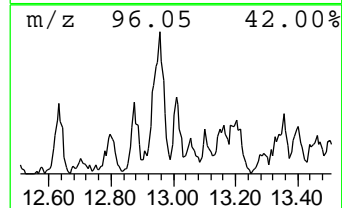
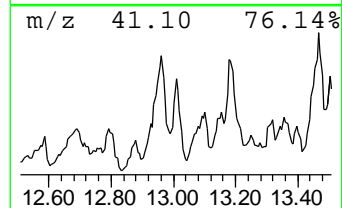
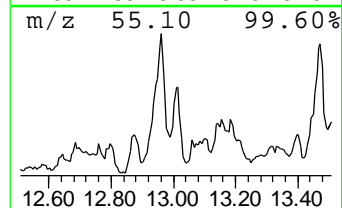
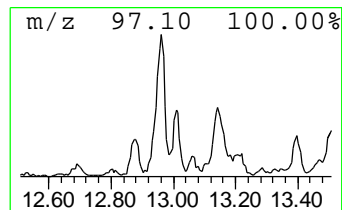
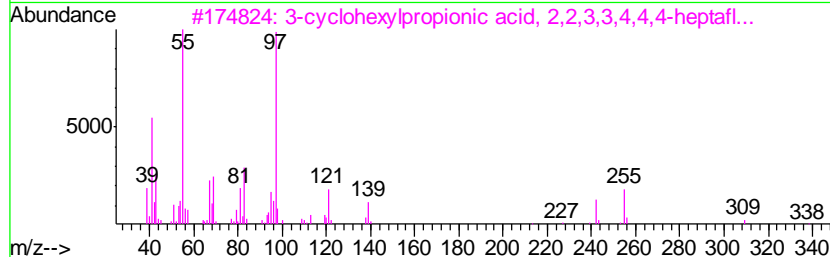
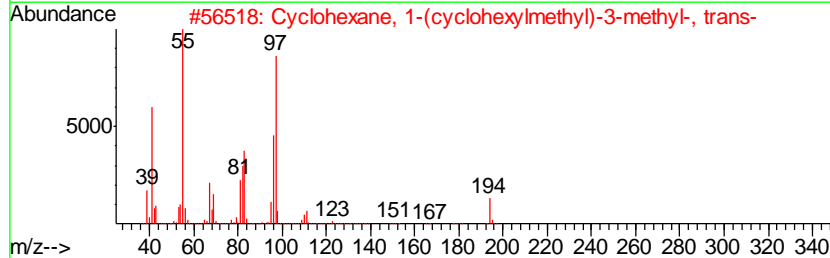
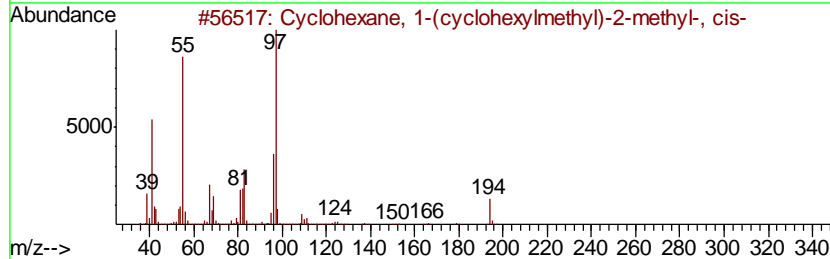
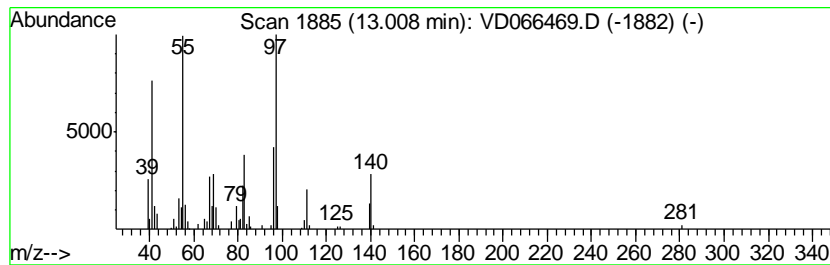
Quant Method : Z:\VOASRV\HPCHEM1\MSVOA_D\METHOD\82D082120S.M
 Quant Title : SW846 8260

TIC Library : C:\DATABASE\NIST11.L
 TIC Integration Parameters: LSCINT.P

 Peak Number 3 Cyclohexane, 1-(cyclohexylm... Concentration Rank 10

R.T.	EstConc	Area	Relative to ISTD	R.T.
13.01	9.54 ug/l	167131	1,4-Dichlorobenzene-d4	13.58

Hit#	of	Tentative ID	MW	MolForm	CAS#	Qual
1	5	Cyclohexane, 1-(cyclohexylmethyl...)	194	C14H26	054824-04-3	64
2		Cyclohexane, 1-(cyclohexylmethyl...)	194	C14H26	054823-95-9	59
3		3-cyclohexylpropionic acid, 2,2,...	338	C13H17F7O2	1000376-61-3	50
4		Cyclohexane, 1-methyl-4-(1-methyl...)	140	C10H20	001678-82-6	43
5		Cyclohexane, 1-isopropyl-1-methyl-	140	C10H20	016580-26-0	43



Data Path : Z:\VOASRV\HPCHEM1\MSVOA D\DATA\VD082820\
 Data File : VD066469.D
 Acq On : 28 Aug 2020 19:31
 Operator : VA/SY
 Sample : L3828-03
 Misc : 6.89G/5.00ml/MSVOA D/SOIL
 ALS Vial : 20 Sample Multiplier: 1

Instrument :
 MSVOA_D
 ClientSampled :
 BS-2

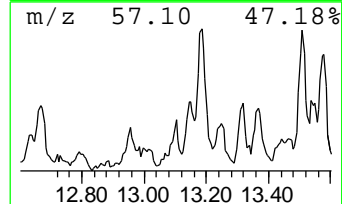
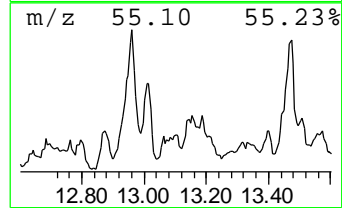
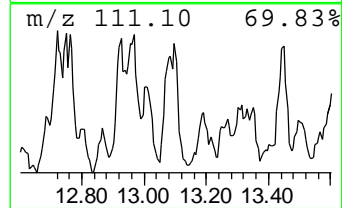
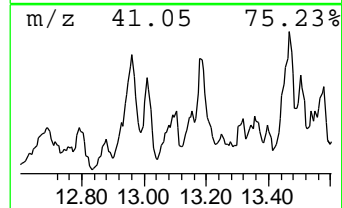
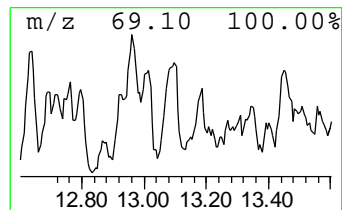
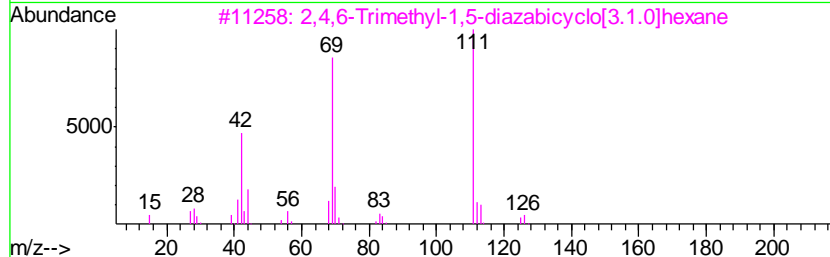
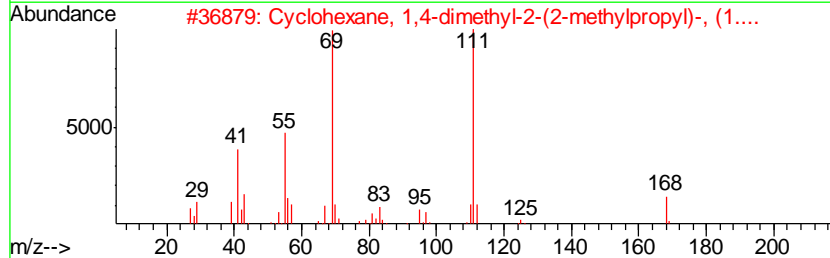
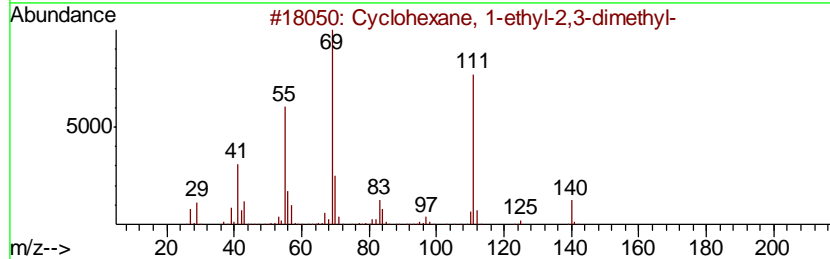
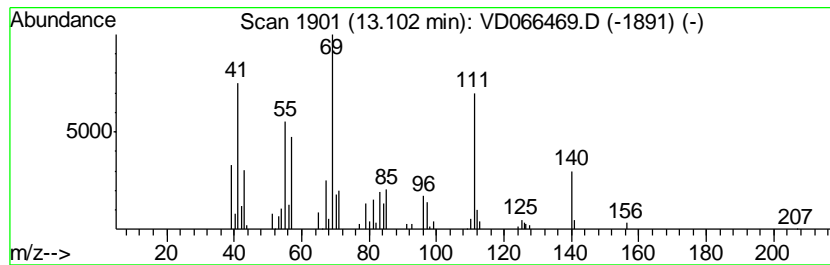
Quant Method : Z:\VOASRV\HPCHEM1\MSVOA_D\METHOD\82D082120S.M
 Quant Title : SW846 8260

TIC Library : C:\DATABASE\NIST11.L
 TIC Integration Parameters: LSCINT.P

 Peak Number 4 Cyclohexane, 1-ethyl-2,3-di... Concentration Rank 9

R.T.	EstConc	Area	Relative to ISTD	R.T.
13.10	9.60 ug/l	168216	1,4-Dichlorobenzene-d4	13.58

Hit#	of	Tentative ID	MW	MolForm	CAS#	Qual
1	5	Cyclohexane, 1-ethyl-2,3-dimethyl-	140	C10H20	007058-05-1	64
2		Cyclohexane, 1,4-dimethyl-2-(2-m...	168	C12H24	054411-17-5	59
3		2,4,6-Trimethyl-1,5-diazabicyclo...	126	C7H14N2	1000283-21-2	53
4		6-Methyl-hept-2-yn-4-ol	126	C8H14O	060018-69-1	53
5		1,1,4-Trimethylcyclohexane	126	C9H18	007094-27-1	52



Data Path : Z:\VOASRV\HPCHEM1\MSVOA D\DATA\VD082820\
 Data File : VD066469.D
 Acq On : 28 Aug 2020 19:31
 Operator : VA/SY
 Sample : L3828-03
 Misc : 6.89G/5.00ml/MSVOA D/SOIL
 ALS Vial : 20 Sample Multiplier: 1

Instrument :
 MSVOA_D
 ClientSampled :
 BS-2

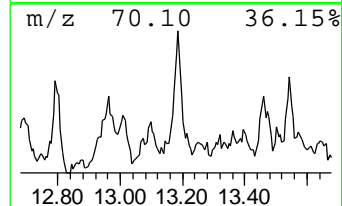
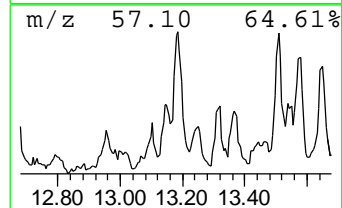
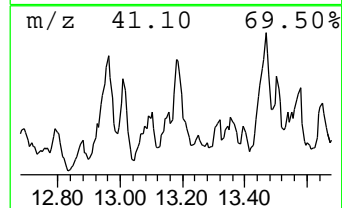
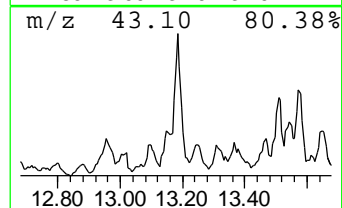
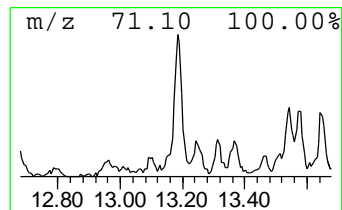
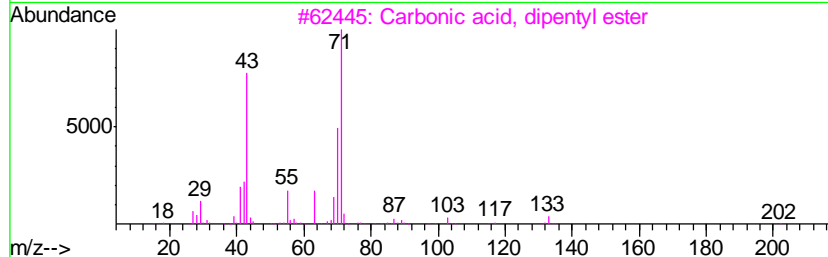
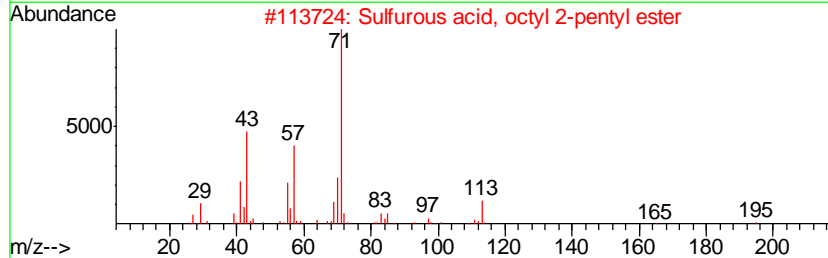
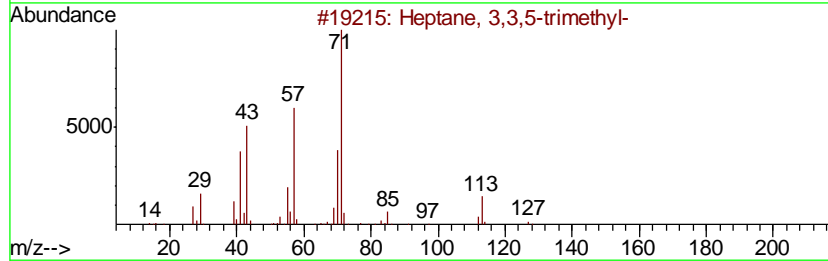
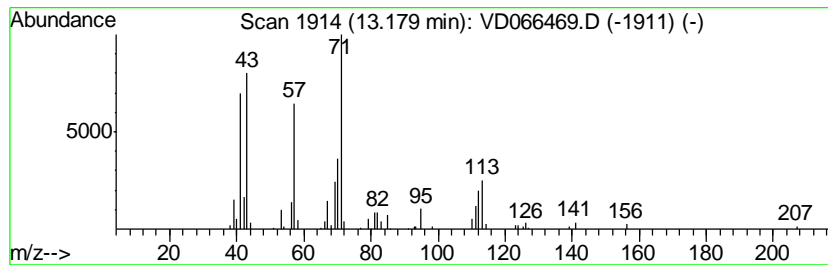
Quant Method : Z:\VOASRV\HPCHEM1\MSVOA_D\METHOD\82D082120S.M
 Quant Title : SW846 8260

TIC Library : C:\DATABASE\NIST11.L
 TIC Integration Parameters: LSCINT.P

 Peak Number 5 Heptane, 3,3,5-trimethyl- Concentration Rank 5

R.T.	EstConc	Area	Relative to ISTD	R.T.
13.18	13.42 ug/l	235186	1,4-Dichlorobenzene-d4	13.58

Hit#	of	Tentative ID	MW	MolForm	CAS#	Qual
1	5	Heptane, 3,3,5-trimethyl-	142	C10H22	007154-80-5	72
2		Sulfurous acid, octyl 2-pentyl e...	264	C13H28O3S	1000309-15-7	59
3		Carbonic acid, dipentyl ester	202	C11H22O3	002050-94-4	53
4		Sulfurous acid, di(2-ethylhexyl)...	306	C16H34O3S	1000309-19-1	53
5		3-Bromooctane	192	C8H17Br	000999-64-4	50



Data Path : Z:\VOASRV\HPCHEM1\MSVOA D\DATA\VD082820\
 Data File : VD066469.D
 Acq On : 28 Aug 2020 19:31
 Operator : VA/SY
 Sample : L3828-03
 Misc : 6.89G/5.00ml/MSVOA D/SOIL
 ALS Vial : 20 Sample Multiplier: 1

Instrument :
 MSVOA_D
 ClientSampled :
 BS-2

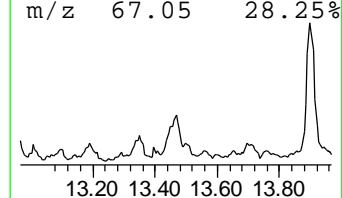
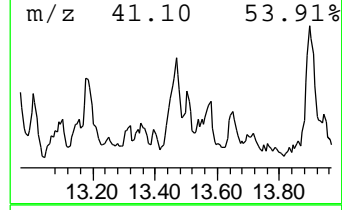
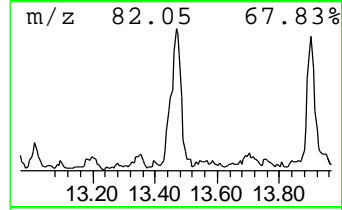
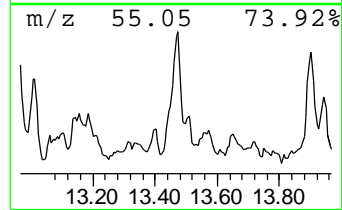
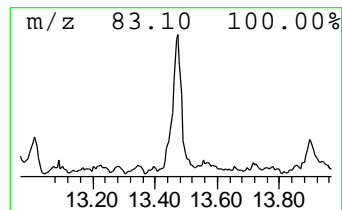
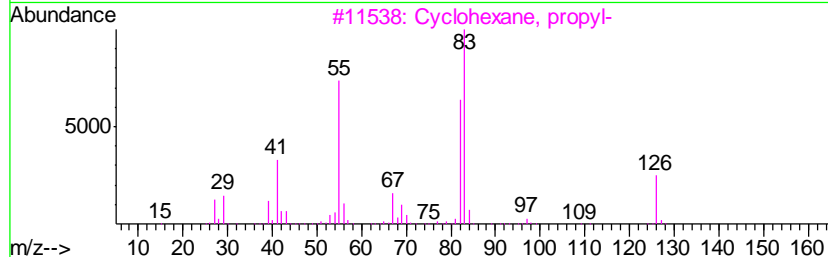
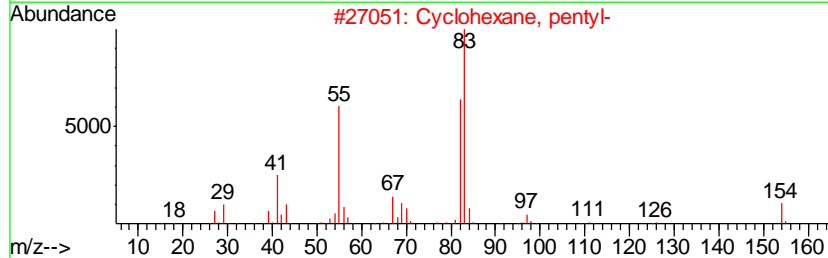
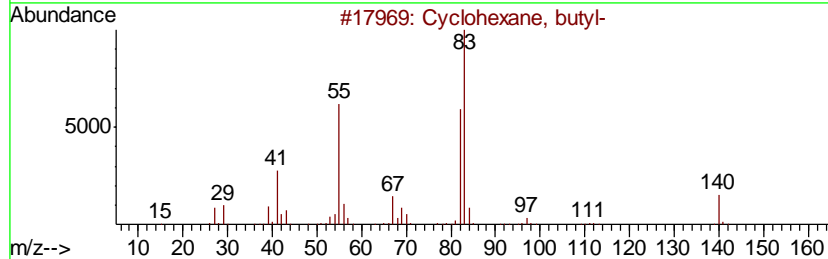
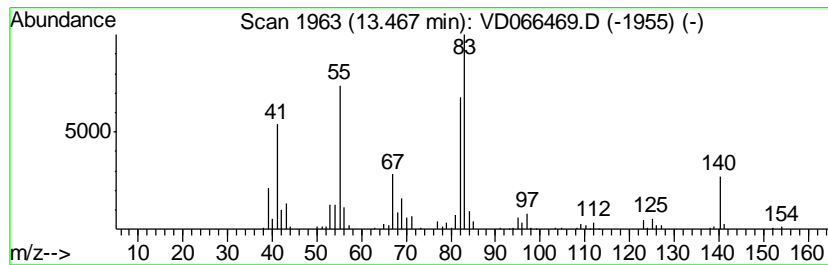
Quant Method : Z:\VOASRV\HPCHEM1\MSVOA_D\METHOD\82D082120S.M
 Quant Title : SW846 8260

TIC Library : C:\DATABASE\NIST11.L
 TIC Integration Parameters: LSCINT.P

 Peak Number 6 Cyclohexane, butyl- Concentration Rank 4

R.T.	EstConc	Area	Relative to ISTD	R.T.
13.47	22.20 ug/l	388941	1,4-Dichlorobenzene-d4	13.58

Hit#	of	Tentative ID	MW	MolForm	CAS#	Qual
1	5	Cyclohexane, butyl-	140	C10H20	001678-93-9	83
2		Cyclohexane, pentyl-	154	C11H22	004292-92-6	76
3		Cyclohexane, propyl-	126	C9H18	001678-92-8	59
4		Cyclohexane, ethyl-	112	C8H16	001678-91-7	59
5		Cyclohexane, 2-propenyl-	124	C9H16	002114-42-3	59



Data Path : Z:\VOASRV\HPCHEM1\MSVOA D\DATA\VD082820\
 Data File : VD066469.D
 Acq On : 28 Aug 2020 19:31
 Operator : VA/SY
 Sample : L3828-03
 Misc : 6.89G/5.00ml/MSVOA D/SOIL
 ALS Vial : 20 Sample Multiplier: 1

Instrument :
 MSVOA_D
 ClientSampled :
 BS-2

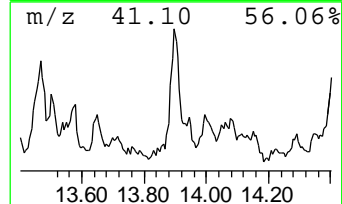
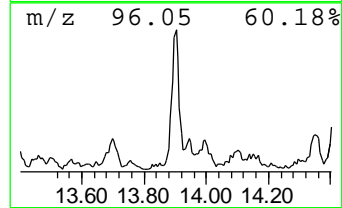
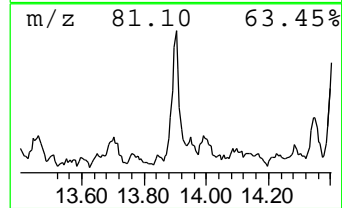
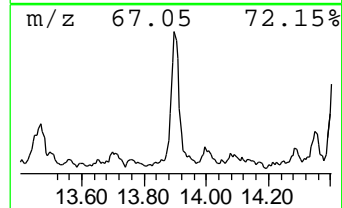
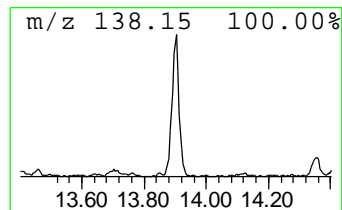
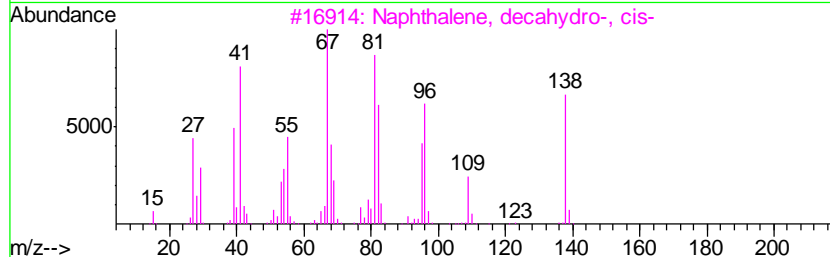
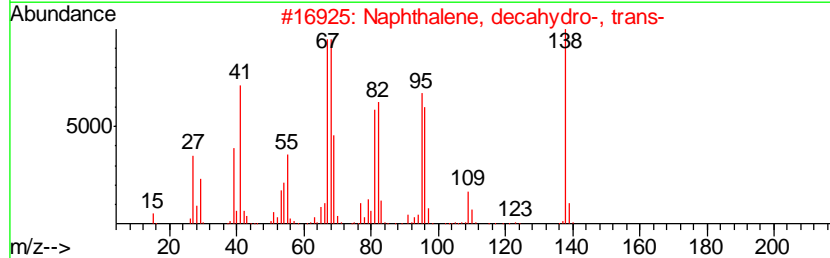
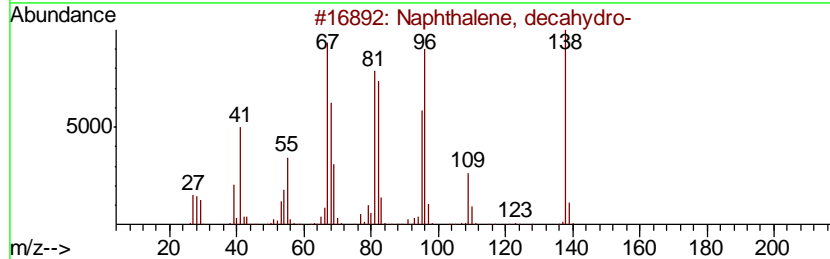
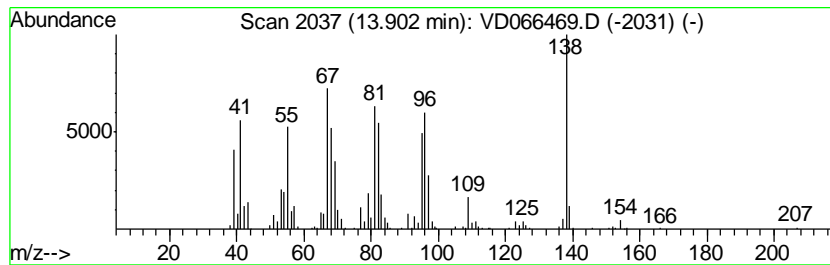
Quant Method : Z:\VOASRV\HPCHEM1\MSVOA_D\METHOD\82D082120S.M
 Quant Title : SW846 8260

TIC Library : C:\DATABASE\NIST11.L
 TIC Integration Parameters: LSCINT.P

 Peak Number 7 Naphthalene, decahydro- Concentration Rank 2

R.T.	EstConc	Area	Relative to ISTD	R.T.
13.90	32.27 ug/l	565337	1,4-Dichlorobenzene-d4	13.58

Hit#	of	Tentative ID	MW	MolForm	CAS#	Qual
1	5	Naphthalene, decahydro-	138	C10H18	000091-17-8	93
2		Naphthalene, decahydro-, trans-	138	C10H18	000493-02-7	90
3		Naphthalene, decahydro-, cis-	138	C10H18	000493-01-6	83
4		Spiro[4.5]decane	138	C10H18	000176-63-6	74
5		Cyclohexene, 1-butyl-	138	C10H18	003282-53-9	64



Data Path : Z:\VOASRV\HPCHEM1\MSVOA D\DATA\VD082820\
 Data File : VD066469.D
 Acq On : 28 Aug 2020 19:31
 Operator : VA/SY
 Sample : L3828-03
 Misc : 6.89G/5.00ml/MSVOA D/SOIL
 ALS Vial : 20 Sample Multiplier: 1

Instrument :
 MSVOA_D
 ClientSampled :
 BS-2

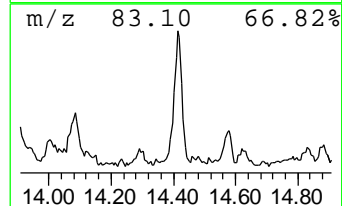
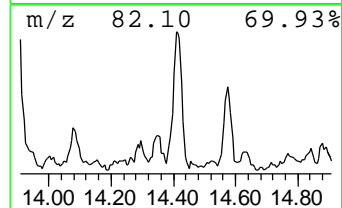
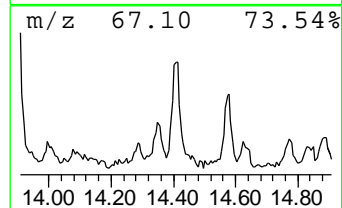
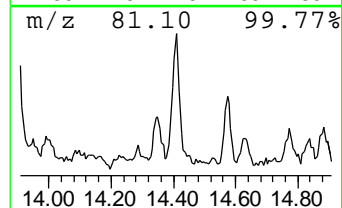
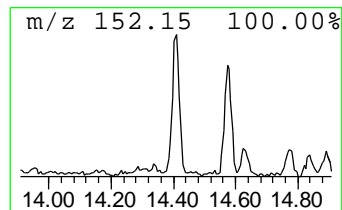
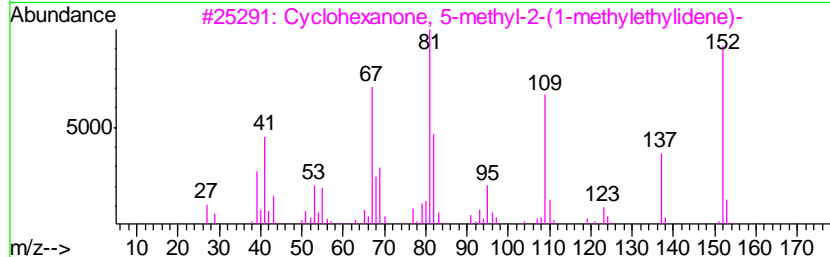
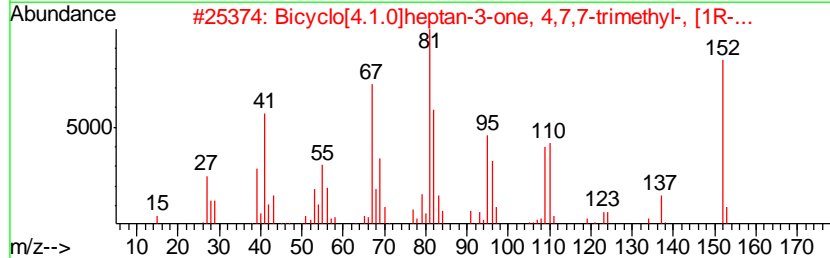
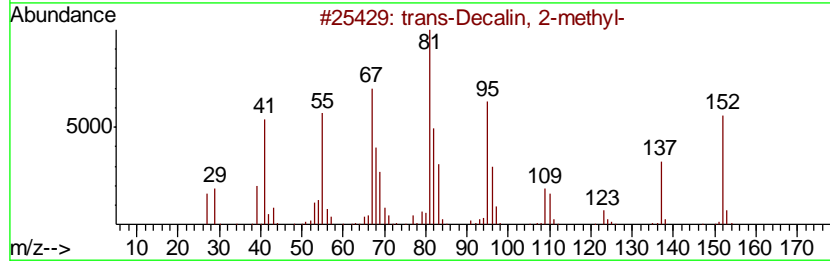
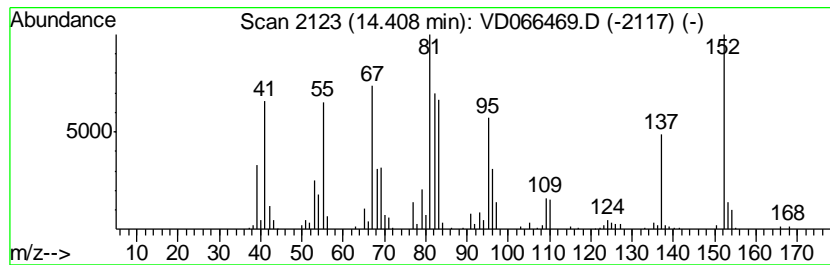
Quant Method : Z:\VOASRV\HPCHEM1\MSVOA_D\METHOD\82D082120S.M
 Quant Title : SW846 8260

TIC Library : C:\DATABASE\NIST11.L
 TIC Integration Parameters: LSCINT.P

 Peak Number 8 trans-Decalin, 2-methyl- Concentration Rank 1

R.T.	EstConc	Area	Relative to ISTD	R.T.
14.41	34.24 ug/l	599904	1,4-Dichlorobenzene-d4	13.58

Hit#	of	Tentative ID	MW	MolForm	CAS#	Qual
1	5	trans-Decalin, 2-methyl-	152	C11H20	1000152-47-3	93
2		Bicyclo[4.1.0]heptan-3-one, 4,7,...	152	C10H16O	004176-04-9	81
3		Cyclohexanone, 5-methyl-2-(1-met...	152	C10H16O	015932-80-6	81
4		cis-Decalin, 2-syn-methyl-	152	C11H20	1000155-85-6	60
5		1-Methyldecahydronaphthalene	152	C11H20	002958-75-0	58



Data Path : Z:\VOASRV\HPCHEM1\MSVOA D\DATA\VD082820\
 Data File : VD066469.D
 Acq On : 28 Aug 2020 19:31
 Operator : VA/SY
 Sample : L3828-03
 Misc : 6.89G/5.00ml/MSVOA D/SOIL
 ALS Vial : 20 Sample Multiplier: 1

Instrument :
 MSVOA_D
 ClientSampled :
 BS-2

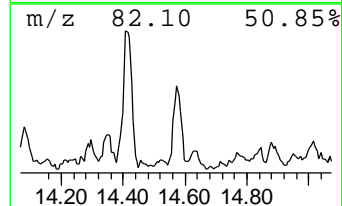
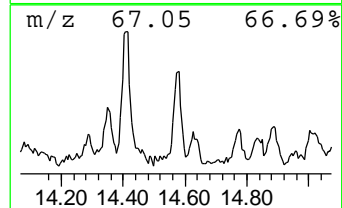
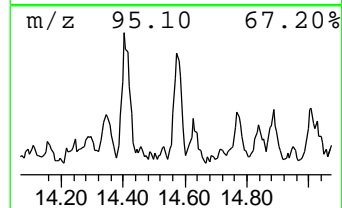
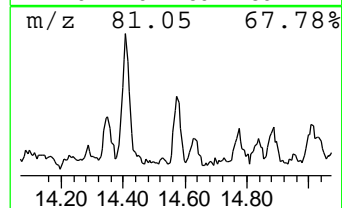
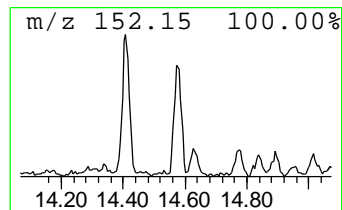
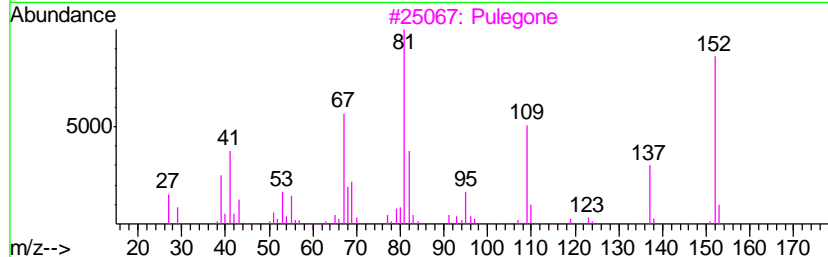
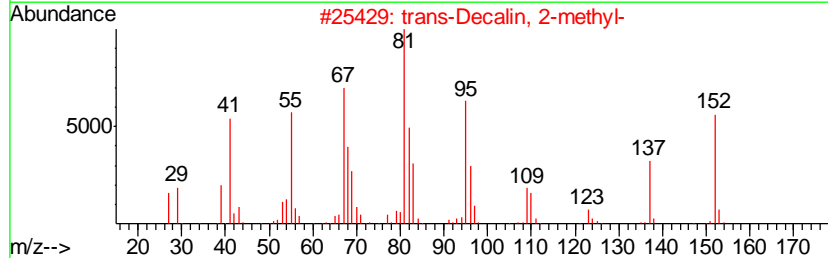
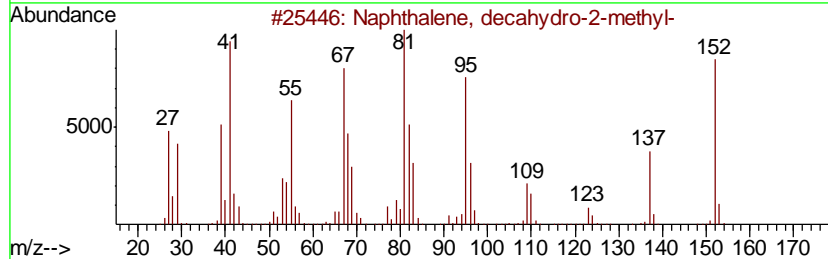
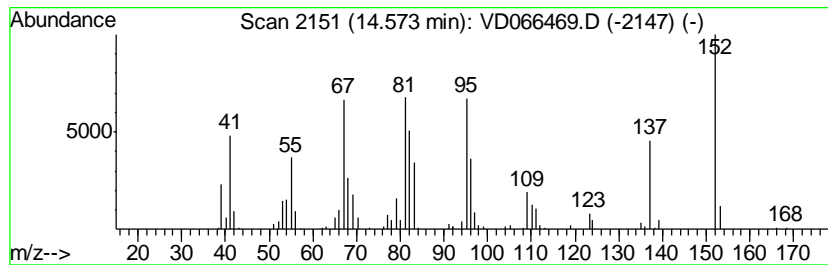
Quant Method : Z:\VOASRV\HPCHEM1\MSVOA_D\METHOD\82D082120S.M
 Quant Title : SW846 8260

TIC Library : C:\DATABASE\NIST11.L
 TIC Integration Parameters: LSCINT.P

 Peak Number 9 Naphthalene, decahydro-2-me... Concentration Rank 6

R.T.	EstConc	Area	Relative to ISTD	R.T.
14.57	11.78 ug/l	206424	1,4-Dichlorobenzene-d4	13.58

Hit#	of	Tentative ID	MW	MolForm	CAS#	Qual
1	5	Naphthalene, decahydro-2-methyl-	152	C11H20	002958-76-1	90
2		trans-Decalin, 2-methyl-	152	C11H20	1000152-47-3	90
3		Pulegone	152	C10H16O	000089-82-7	74
4		cis-Decalin, 2-syn-methyl-	152	C11H20	1000155-85-6	68
5		Cyclohexanone, 5-methyl-2-(1-met...	152	C10H16O	015932-80-6	68



Data Path : Z:\VOASRV\HPCHEM1\MSVOA D\DATA\VD082820\
 Data File : VD066469.D
 Acq On : 28 Aug 2020 19:31
 Operator : VA/SY
 Sample : L3828-03
 Misc : 6.89G/5.00ml/MSVOA D/SOIL
 ALS Vial : 20 Sample Multiplier: 1

Instrument :
 MSVOA_D
 ClientSampled :
 BS-2

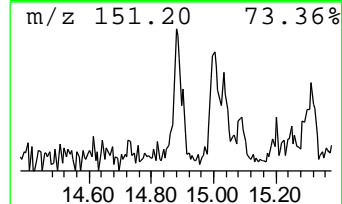
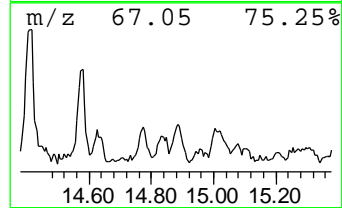
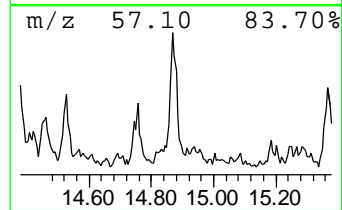
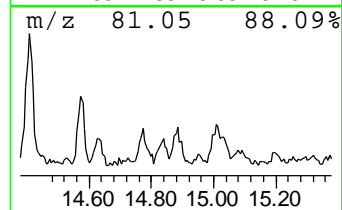
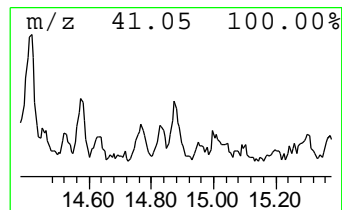
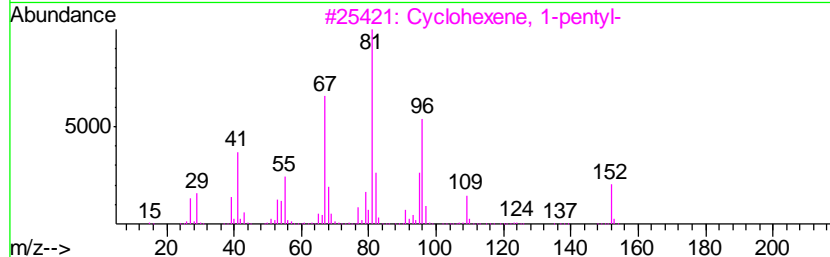
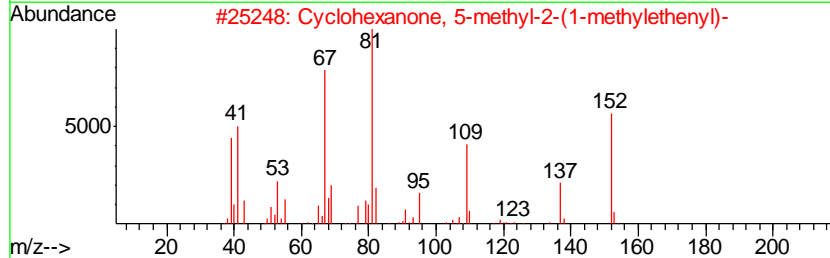
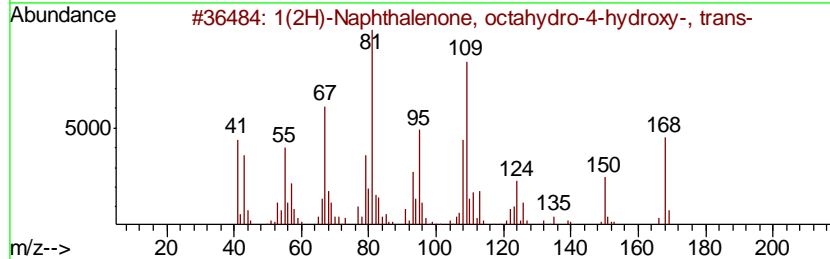
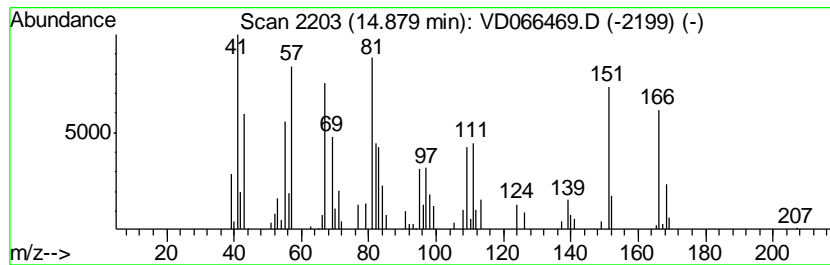
Quant Method : Z:\VOASRV\HPCHEM1\MSVOA_D\METHOD\82D082120S.M
 Quant Title : SW846 8260

TIC Library : C:\DATABASE\NIST11.L
 TIC Integration Parameters: LSCINT.P

 Peak Number 10 1(2H)-Naphthalenone, octahy... Concentration Rank 7

R.T.	EstConc	Area	Relative to ISTD	R.T.
14.88	10.61 ug/l	185866	1,4-Dichlorobenzene-d4	13.58

Hit#	of	Tentative ID	MW	MolForm	CAS#	Qual
1	5	1(2H)-Naphthalenone, octahydro-4...	168	C10H16O2	021766-50-7	55
2		Cyclohexanone, 5-methyl-2-(1-met...	152	C10H16O	000529-00-0	38
3		Cyclohexene, 1-pentyl-	152	C11H20	015232-85-6	35
4		Cyclohexane, 1,3-dimethyl-2-meth...	124	C9H16	020348-74-7	35
5		Cyclohexanone, 5-methyl-2-(1-met...	152	C10H16O	015932-80-6	35



Data Path : Z:\VOASRV\HPCHEM1\MSVOA_D\DATA\VD082820\
 Data File : VD066469.D
 Acq On : 28 Aug 2020 19:31
 Operator : VA/SY
 Sample : L3828-03
 Misc : 6.89G/5.00ml/MSVOA_D/SOIL
 ALS Vial : 20 Sample Multiplier: 1

Instrument :
 MSVOA_D
 ClientSampled :
 BS-2

Quant Method : Z:\VOASRV\HPCHEM1\MSVOA_D\METHOD\82D082120S.M
 Quant Title : SW846 8260

TIC Library : C:\DATABASE\NIST11.L
 TIC Integration Parameters: LSCINT.P

TIC Top Hit name	RT	EstConc	Units	Response	--Internal Standard--			
					#	RT	Resp	Conc
Cyclohexane, 1,2,...	12.17	10.3	ug/l	148543	3	11.64	718862	50.0
m-Menthane, (1S,3...	12.96	24.2	ug/l	423403	4	13.58	875946	50.0
Cyclohexane, 1-(c...	13.01	9.5	ug/l	167131	4	13.58	875946	50.0
Cyclohexane, 1-et...	13.10	9.6	ug/l	168216	4	13.58	875946	50.0
Heptane, 3,3,5-tr...	13.18	13.4	ug/l	235186	4	13.58	875946	50.0
Cyclohexane, butyl-	13.47	22.2	ug/l	388941	4	13.58	875946	50.0
Naphthalene, deca...	13.90	32.3	ug/l	565337	4	13.58	875946	50.0
trans-Decalin, 2-...	14.41	34.2	ug/l	599904	4	13.58	875946	50.0
Naphthalene, deca...	14.57	11.8	ug/l	206424	4	13.58	875946	50.0
1(2H)-Naphthaleno...	14.88	10.6	ug/l	185866	4	13.58	875946	50.0