

Data Path : Z:\VOASRV\HPCHEM1\MSVOA D\DATA\VD092120\
 Data File : VD066789.D
 Acq On : 21 Sep 2020 18:10
 Operator : VA/SY
 Sample : L4051-01RE
 Misc : 7.62G/5.00ml/MSVOA D/SOIL
 ALS Vial : 12 Sample Multiplier: 1

Instrument :
 MSVOA_D
 ClientSampleId :
 KTS-SB-02-1-2RE

Quant Time: Sep 22 01:28:43 2020
 Quant Method : Z:\VOASRV\HPCHEM1\MSVOA_D\METHOD\82D091520S.M
 Quant Title : SW846 8260
 QLast Update : Tue Sep 15 16:35:37 2020
 Response via : Initial Calibration

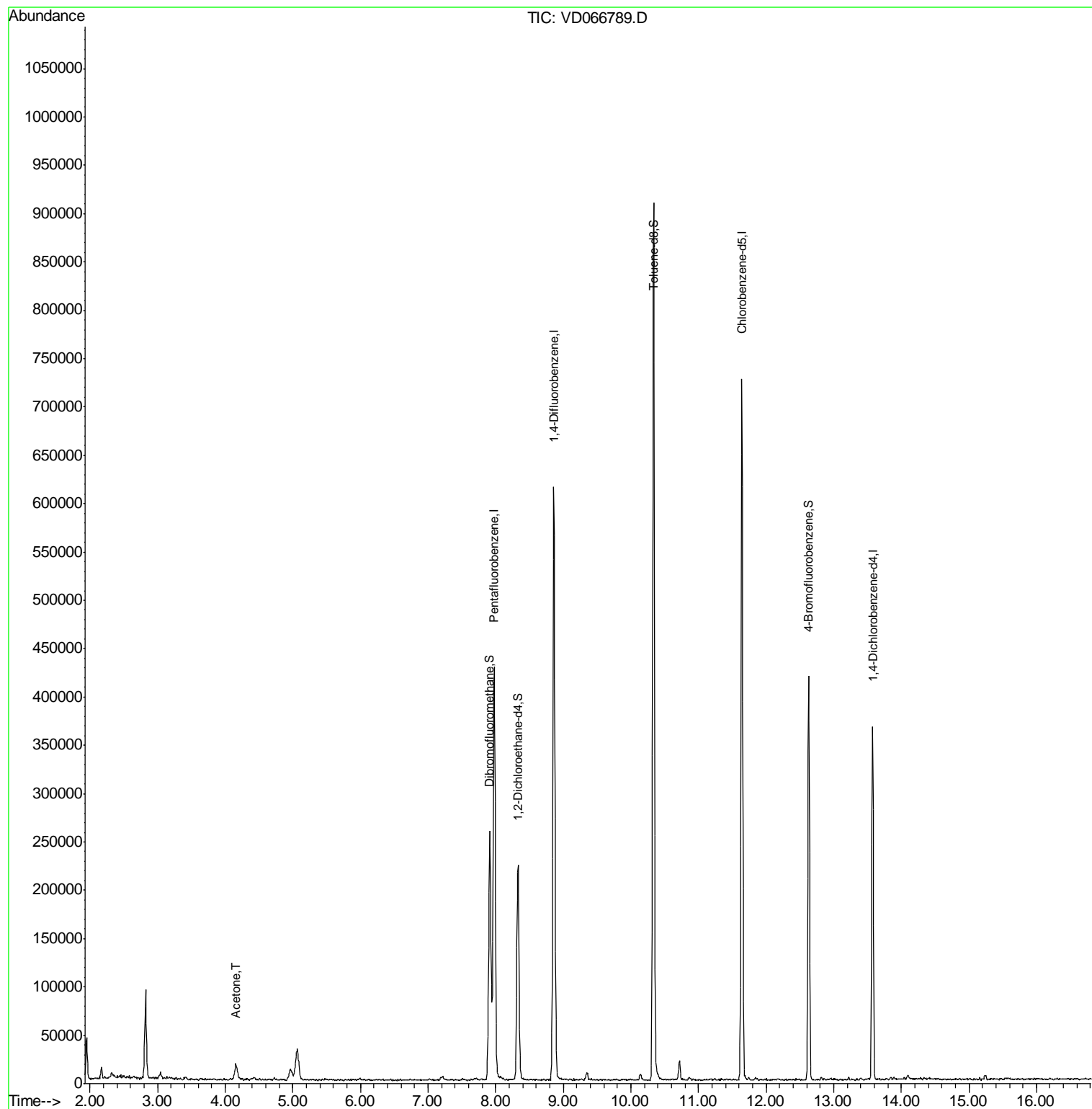
Internal Standards	R.T.	QIon	Response	Conc	Units	Dev(Min)
1) Pentafluorobenzene	7.98	168	295877	50.00	ug/l	0.00
34) 1,4-Difluorobenzene	8.86	114	512570	50.00	ug/l	0.00
63) Chlorobenzene-d5	11.64	117	410518	50.00	ug/l	0.00
72) 1,4-Dichlorobenzene-d4	13.58	152	91441	50.00	ug/l	0.00
System Monitoring Compounds						
33) 1,2-Dichloroethane-d4	8.33	65	180649	57.22	ug/l	0.00
Spiked Amount	50.000		Recovery	=	114.44%	
35) Dibromofluoromethane	7.91	113	182315	58.02	ug/l	0.00
Spiked Amount	50.000		Recovery	=	116.04%	
50) Toluene-d8	10.34	98	596887	53.31	ug/l	0.00
Spiked Amount	50.000		Recovery	=	106.62%	
62) 4-Bromofluorobenzene	12.63	95	131909	34.13	ug/l	0.00
Spiked Amount	50.000		Recovery	=	68.26%	
Target Compounds						
16) Acetone	4.16	43	28537	44.391	ug/l	Qvalue 92

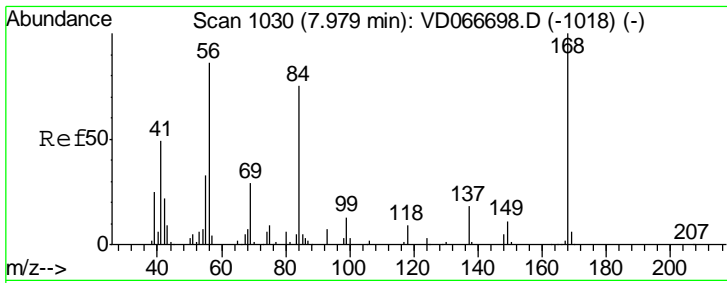
(#) = qualifier out of range (m) = manual integration (+) = signals summed

Data Path : Z:\VOASRV\HPCHEM1\MSVOA D\DATA\VD092120\
Data File : VD066789.D
Acq On : 21 Sep 2020 18:10
Operator : VA/SY
Sample : L4051-01RE
Misc : 7.62G/5.00ml/MSVOA D/SOIL
ALS Vial : 12 Sample Multiplier: 1

Instrument :
MSVOA_D
ClientSampled :
KTS-SB-02-1-2RE

Quant Time: Sep 22 01:28:43 2020
Quant Method : Z:\VOASRV\HPCHEM1\MSVOA_D\METHOD\82D091520S.M
Quant Title : SW846 8260
QLast Update : Tue Sep 15 16:35:37 2020
Response via : Initial Calibration

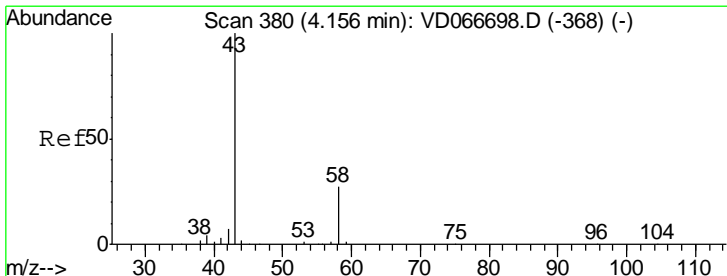
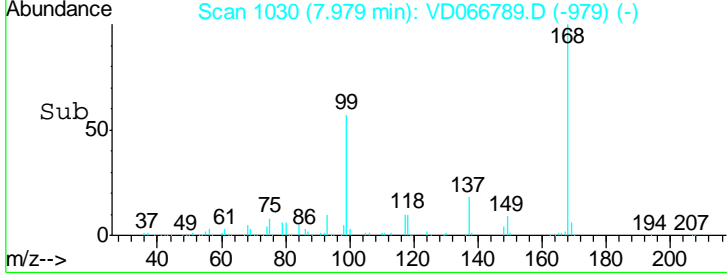
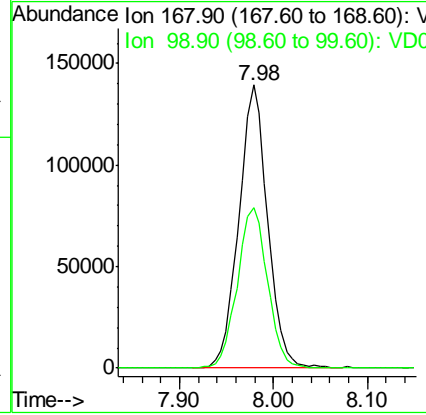
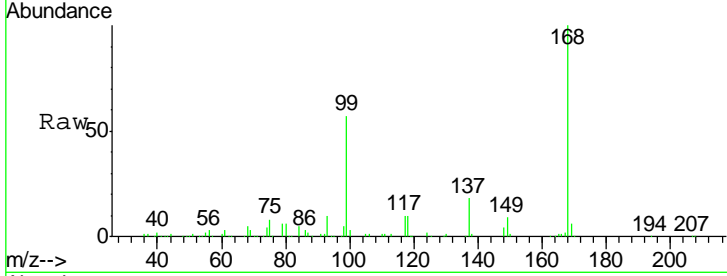




#1
 Pentafluorobenzene
 Concen: 50.000 ug/l
 RT: 7.98 min Scan# 1030
 Delta R.T. -0.00 min
 Lab File: VD066789.D
 Acq: 21 Sep 2020 18:10

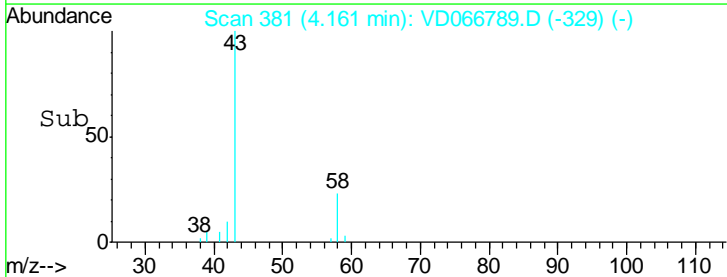
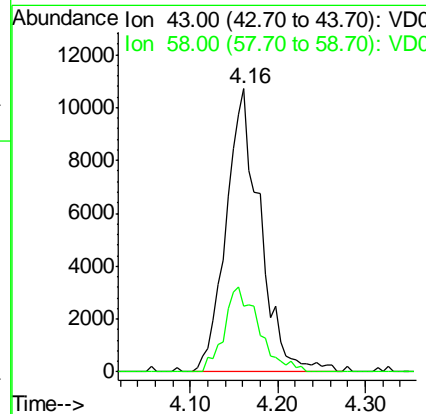
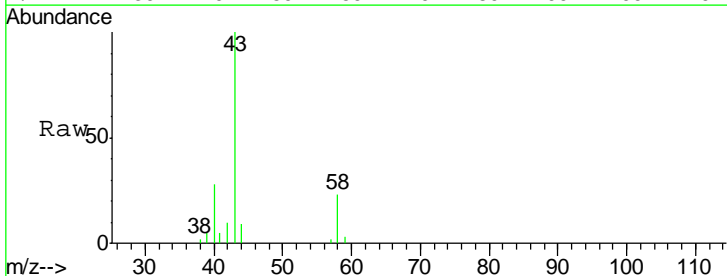
Instrument :
 MSVOA_D
 ClientSampleID :
 KTS-SB-02-1-2RE

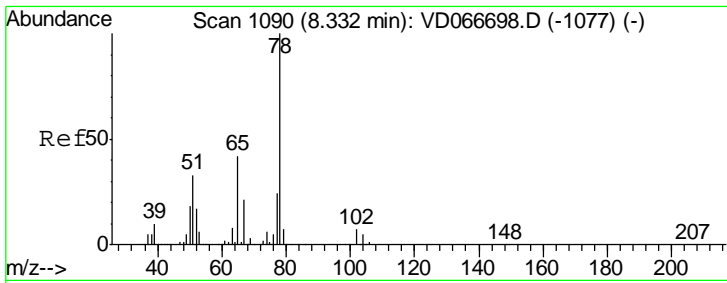
Tgt Ion	Resp	Lower	Upper
168	100		
99	56.6	54.4	81.6



#16
 Acetone
 Concen: 44.391 ug/l
 RT: 4.16 min Scan# 381
 Delta R.T. 0.01 min
 Lab File: VD066789.D
 Acq: 21 Sep 2020 18:10

Tgt Ion	Resp	Lower	Upper
43	100		
58	23.1	21.9	32.9

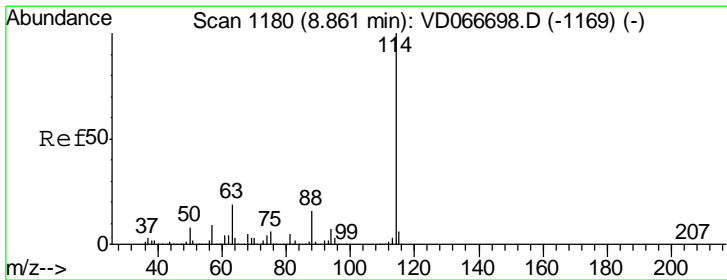
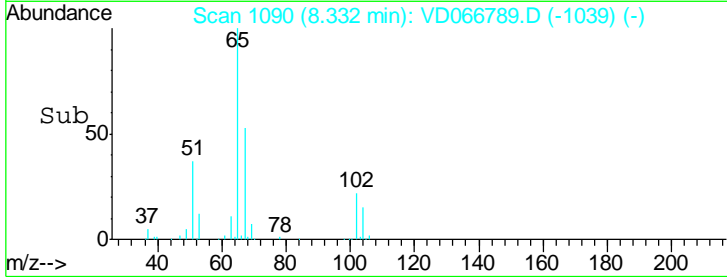
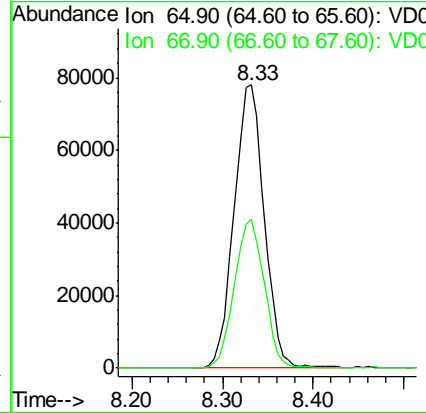
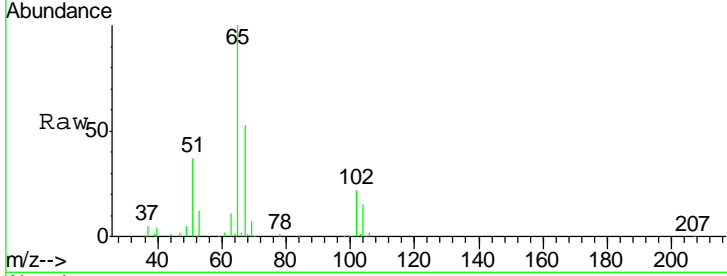




#33
 1,2-Dichloroethane-d4
 Concen: 57.225 ug/l
 RT: 8.33 min Scan# 1090
 Delta R.T. -0.00 min
 Lab File: VD066789.D
 Acq: 21 Sep 2020 18:10

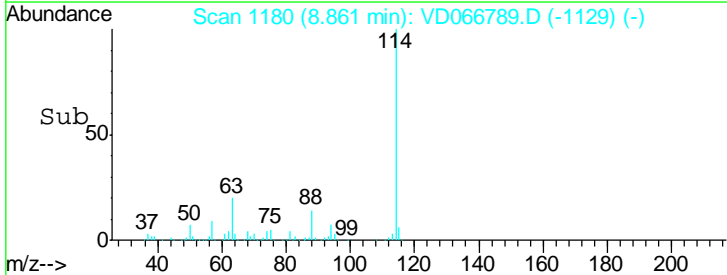
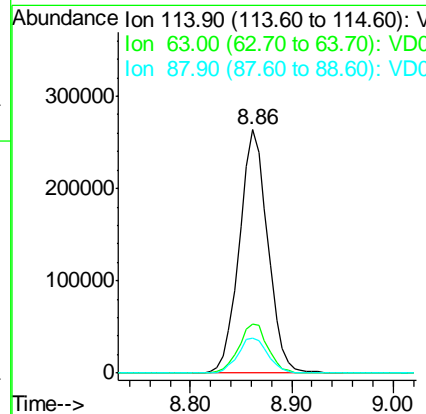
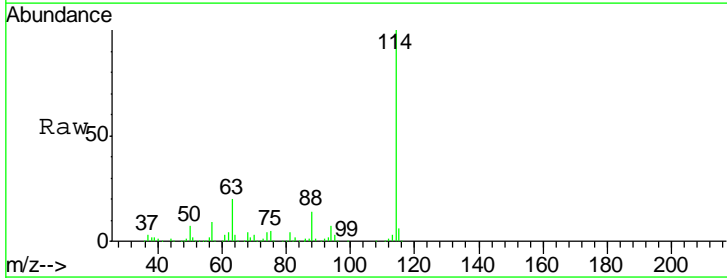
Instrument :
 MSVOA_D
 ClientSampleId :
 KTS-SB-02-1-2RE

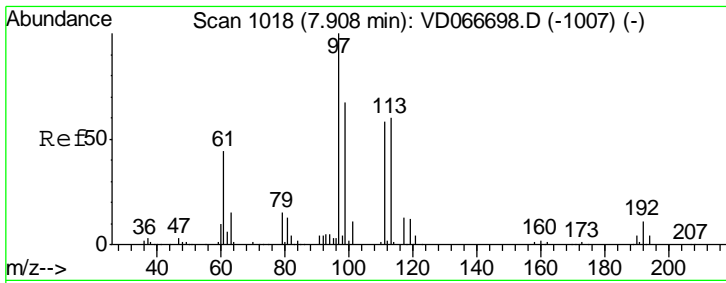
Tgt Ion	Resp	Lower	Upper
65	180649		
65	100		
67	51.9	0.0	102.2



#34
 1,4-Difluorobenzene
 Concen: 50.000 ug/l
 RT: 8.86 min Scan# 1180
 Delta R.T. -0.00 min
 Lab File: VD066789.D
 Acq: 21 Sep 2020 18:10

Tgt Ion	Resp	Lower	Upper
114	512570		
114	100		
63	20.3	0.0	37.6
88	14.3	0.0	32.2

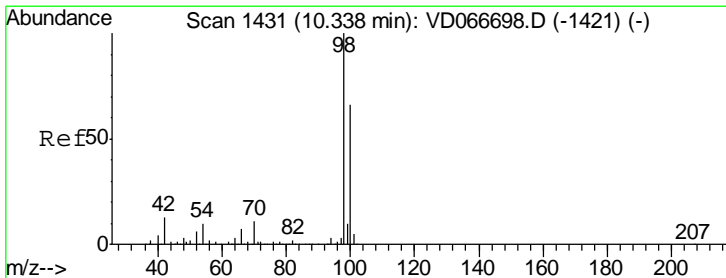
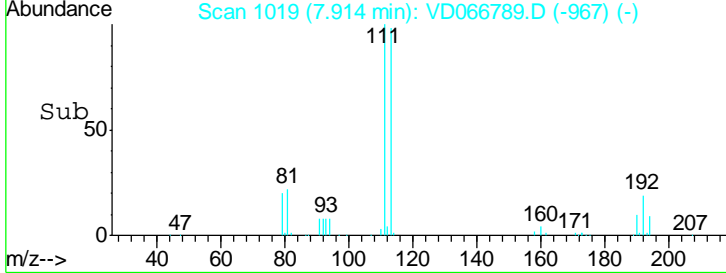
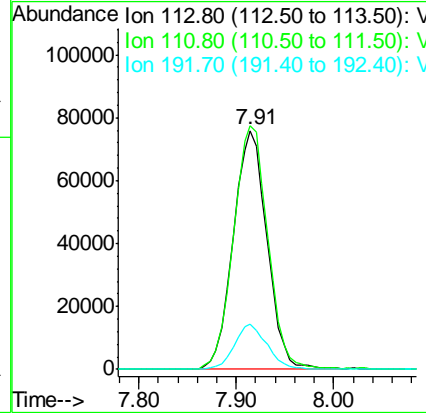
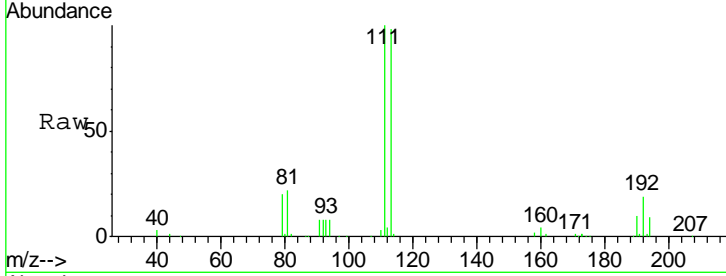




#35
 Dibromofluoromethane
 Concen: 58.015 ug/l
 RT: 7.91 min Scan# 1019
 Delta R.T. 0.01 min
 Lab File: VD066789.D
 Acq: 21 Sep 2020 18:10

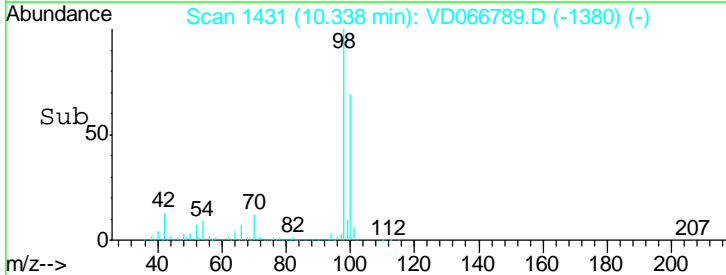
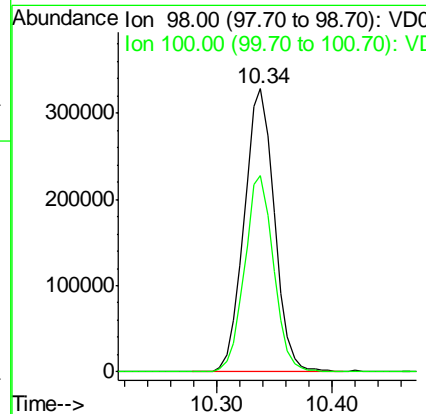
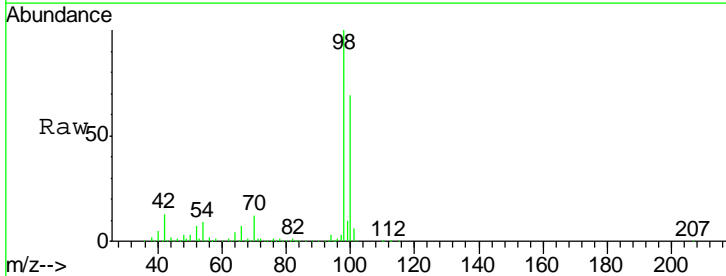
Instrument :
 MSVOA_D
 ClientSampled :
 KTS-SB-02-1-2RE

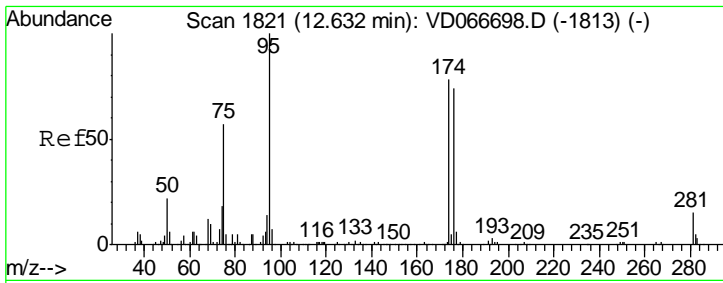
Tgt Ion	Resp	Lower	Upper
113	182315		
113	100		
111	103.7	83.2	124.8
192	18.2	14.8	22.2



#50
 Toluene-d8
 Concen: 53.312 ug/l
 RT: 10.34 min Scan# 1431
 Delta R.T. -0.00 min
 Lab File: VD066789.D
 Acq: 21 Sep 2020 18:10

Tgt Ion	Resp	Lower	Upper
98	596887		
98	100		
100	66.9	52.7	79.1

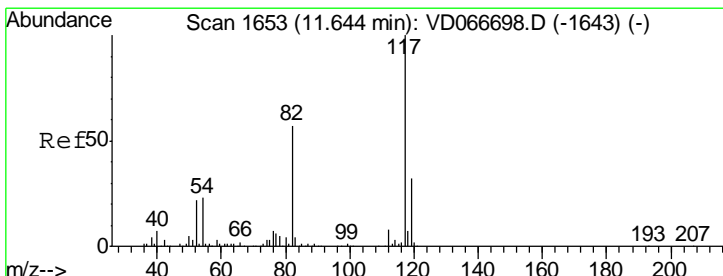
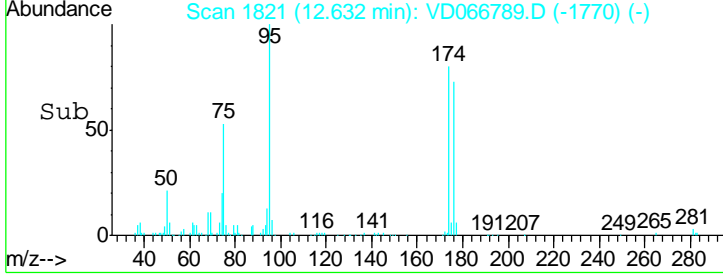
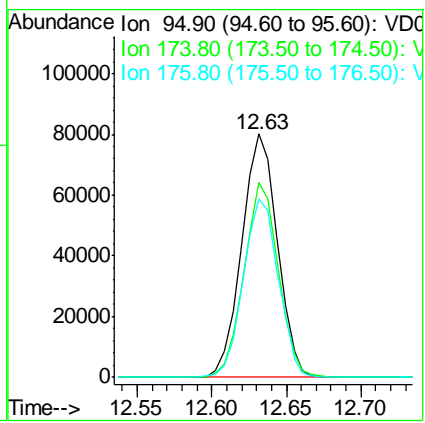
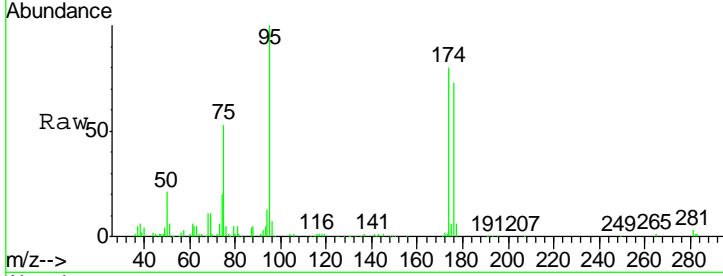




#62
 4-Bromofluorobenzene
 Concen: 34.131 ug/l
 RT: 12.63 min Scan# 1821
 Delta R.T. -0.00 min
 Lab File: VD066789.D
 Acq: 21 Sep 2020 18:10

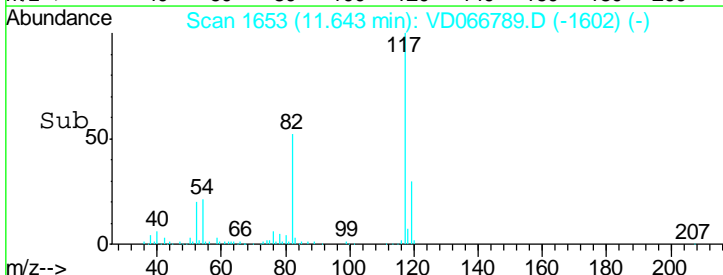
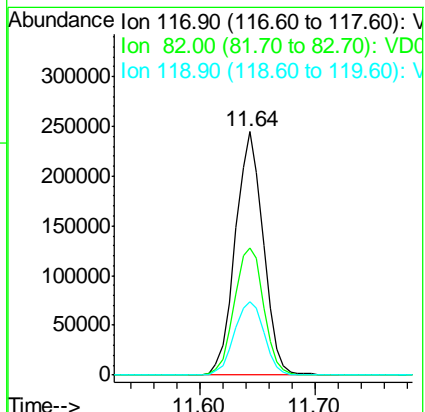
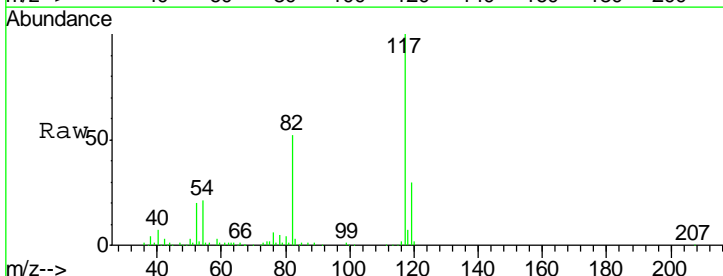
Instrument : MSVOA_D
 ClientSampleID : KTS-SB-02-1-2RE

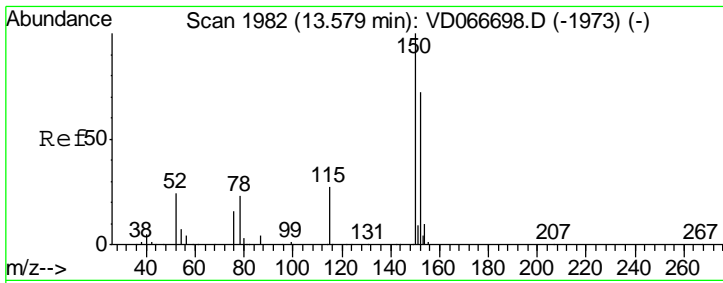
Tgt Ion	Resp	Lower	Upper
95	131909		
174	77.4	0.0	156.6
176	72.5	0.0	150.2



#63
 Chlorobenzene-d5
 Concen: 50.000 ug/l
 RT: 11.64 min Scan# 1653
 Delta R.T. -0.00 min
 Lab File: VD066789.D
 Acq: 21 Sep 2020 18:10

Tgt Ion	Resp	Lower	Upper
117	410518		
82	52.3	45.4	68.0
119	30.0	25.8	38.6





#72
 1,4-Dichlorobenzene-d4
 Concen: 50.000 ug/l
 RT: 13.58 min Scan# 1982
 Delta R.T. -0.00 min
 Lab File: VD066789.D
 Acq: 21 Sep 2020 18:10

Instrument : MSVOA_D
 ClientSampled : KTS-SB-02-1-2RE

Tot Ion	Ratio	Lower	Upper
152	100		
115	61.2	30.5	91.5
150	163.2	0.0	344.6

