

Data Path : Z:\VOASRV\HPCHEM1\MSVOA D\DATA\VD100220\
 Data File : VD067031.D
 Acq On : 02 Oct 2020 13:15
 Operator : VA/SY
 Sample : L3865-01
 Misc : 8.07G/5.00ml/MSVOA D/SOIL
 ALS Vial : 6 Sample Multiplier: 1

Instrument :
 MSVOA_D
 ClientSampleId :
 NB-08-093020

Integration Parameters: RTEINT.P
 Integrator: RTE
 Smoothing : ON Filtering: 5
 Sampling : 1 Min Area: 3 % of largest Peak
 Start Thrs: 0.2 Max Peaks: 100
 Stop Thrs : 0 Peak Location: TOP

If leading or trailing edge < 100 prefer < Baseline drop else tangent >
 Peak separation: 5

Method : Z:\VOASRV\HPCHEM1\MSVOA_D\METHOD\82D100120S.M
 Title : SW846 8260

Signal : TIC

peak #	R.T. min	first scan	max scan	last scan	PK TY	peak height	corr. area	corr. % max.	% of total
1	7.914	1010	1019	1024	rBV2	347543	832055	35.18%	6.902%
2	7.979	1024	1030	1041	rVB	608256	1363505	57.65%	11.310%
3	8.332	1077	1090	1100	rBV	299500	692552	29.28%	5.744%
4	8.861	1170	1180	1192	rBV	878840	1743955	73.74%	14.465%
5	10.338	1421	1431	1439	rBV	1297989	2364982	100.00%	19.616%
6	10.720	1490	1496	1504	rVB2	18960	36321	1.54%	0.301%
7	11.643	1645	1653	1664	rBV	1150771	1970595	83.32%	16.345%
8	12.638	1814	1822	1830	rBV	826577	1377999	58.27%	11.430%
9	13.579	1975	1982	1990	rVB	945991	1598261	67.58%	13.257%
10	14.108	2067	2072	2079	rVB3	16281	29276	1.24%	0.243%
11	15.561	2313	2319	2324	rBV2	25425	46619	1.97%	0.387%

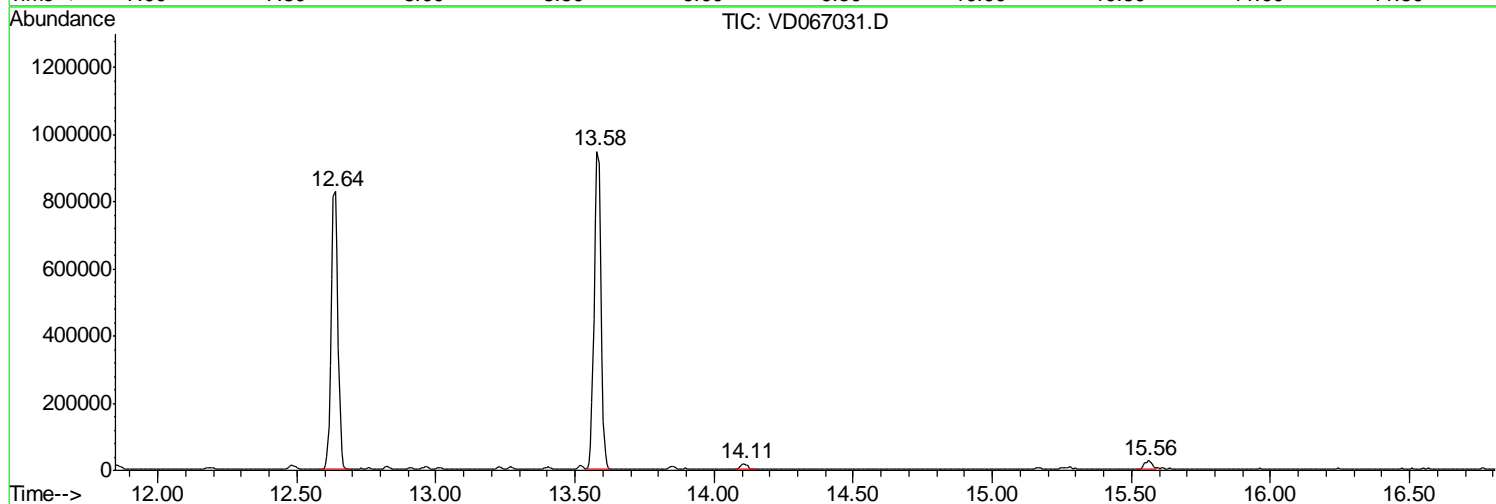
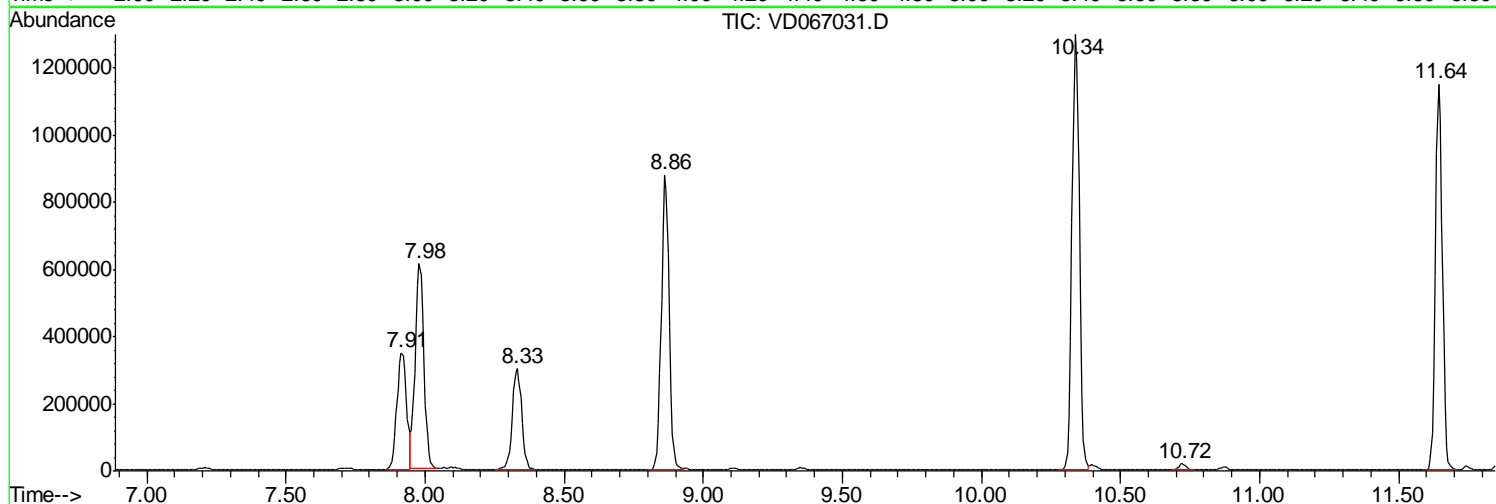
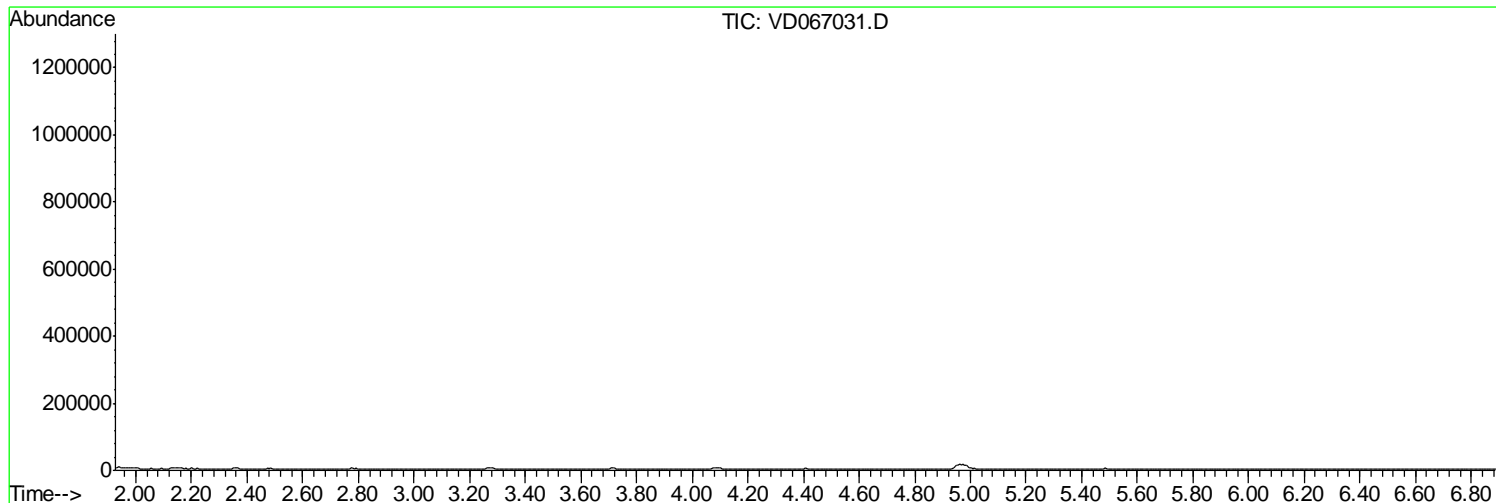
Sum of corrected areas: 12056120

Data Path : Z:\VOASRV\HPCHEM1\MSVOA D\DATA\VD100220\
Data File : VD067031.D
Acq On : 02 Oct 2020 13:15
Operator : VA/SY
Sample : L3865-01
Misc : 8.07G/5.00ml/MSVOA D/SOIL
ALS Vial : 6 Sample Multiplier: 1

Instrument :
MSVOA_D
ClientSampleId :
NB-08-093020

Quant Method : Z:\VOASRV\HPCHEM1\MSVOA_D\METHOD\82D100120S.M
Quant Title : SW846 8260

TIC Library : C:\DATABASE\NIST11.L
TIC Integration Parameters: LSCINT.P



Data Path : Z:\VOASRV\HPCHEM1\MSVOA_D\DATA\VD100220\
Data File : VD067031.D
Acq On : 02 Oct 2020 13:15
Operator : VA/SY
Sample : L3865-01
Misc : 8.07G/5.00ml/MSVOA_D/SOIL
ALS Vial : 6 Sample Multiplier: 1

Instrument :
MSVOA_D
ClientSampleID :
NB-08-093020

Quant Method : Z:\VOASRV\HPCHEM1\MSVOA_D\METHOD\82D100120S.M
Quant Title : SW846 8260

TIC Library : C:\DATABASE\NIST11.L
TIC Integration Parameters: LSCINT.P

No Library Search Compounds Detected

Data Path : Z:\VOASRV\HPCHEM1\MSVOA_D\DATA\VD100220\
Data File : VD067031.D
Acq On : 02 Oct 2020 13:15
Operator : VA/SY
Sample : L3865-01
Misc : 8.07G/5.00ml/MSVOA_D/SOIL
ALS Vial : 6 Sample Multiplier: 1

Instrument :
MSVOA_D
ClientSampleId :
NB-08-093020

Quant Method : Z:\VOASRV\HPCHEM1\MSVOA_D\METHOD\82D100120S.M
Quant Title : SW846 8260

TIC Library : C:\DATABASE\NIST11.L
TIC Integration Parameters: LSCINT.P

TIC Top Hit name	RT	EstConc	Units	Response	--Internal Standard--			
					#	RT	Resp	Conc
