

Data Path : Z:\VOASRV\HPCHEM1\MSVOA D\DATA\VD100720\
 Data File : VD067161.D
 Acq On : 07 Oct 2020 19:14
 Operator : VA/SY
 Sample : L4281-03
 Misc : 5.00G/5.00ml/MSVOA D/SOIL
 ALS Vial : 22 Sample Multiplier: 1

Instrument :
 MSVOA_D
 ClientSampled :
 49-93

Integration Parameters: RTEINT.P

Integrator: RTE
 Smoothing : ON
 Sampling : 1
 Start Thrs: 0.2
 Stop Thrs : 0

Filtering: 5
 Min Area: 3 % of largest Peak
 Max Peaks: 100
 Peak Location: TOP

If leading or trailing edge < 100 prefer < Baseline drop else tangent >
 Peak separation: 5

Method : Z:\VOASRV\HPCHEM1\MSVOA_D\METHOD\82D100120S.M
 Title : SW846 8260

Signal : TIC

peak #	R.T. min	first scan	max scan	last scan	PK TY	peak height	corr. area	corr. % max.	% of total
1	4.150	366	379	402	rBV	3794808	10817138	56.42%	8.014%
2	5.991	681	692	712	rBV4	146859	465692	2.43%	0.345%
3	7.920	1008	1020	1024	rBV	241036	615212	3.21%	0.456%
4	7.979	1024	1030	1040	rVB	485995	1117383	5.83%	0.828%
5	8.332	1079	1090	1103	rVB3	193767	465791	2.43%	0.345%
6	8.720	1147	1156	1165	rBV2	137787	289066	1.51%	0.214%
7	8.861	1172	1180	1200	rVB	629793	1317964	6.87%	0.976%
8	10.338	1424	1431	1436	rBV	975065	1820822	9.50%	1.349%
9	10.402	1436	1442	1456	rVV	10477955	19174151	100.00%	14.205%
10	10.520	1456	1462	1469	rVB2	142688	279027	1.46%	0.207%
11	11.085	1543	1558	1569	rBV	436730	882128	4.60%	0.654%
12	11.432	1608	1617	1628	rVB4	219287	589812	3.08%	0.437%
13	11.526	1628	1633	1639	rBV	185463	317794	1.66%	0.235%
14	11.643	1646	1653	1663	rBV	781394	1385063	7.22%	1.026%
15	11.743	1663	1670	1679	rVV	1076146	1901960	9.92%	1.409%
16	11.855	1680	1689	1699	rVV	4582134	9055864	47.23%	6.709%
17	12.179	1732	1744	1752	rBV	2059551	3982362	20.77%	2.950%
18	12.273	1752	1760	1764	rVB	223894	394605	2.06%	0.292%
19	12.355	1764	1774	1777	rBV5	234122	515314	2.69%	0.382%
20	12.479	1790	1795	1800	rBV	254477	500449	2.61%	0.371%
21	12.538	1800	1805	1806	rVV4	167953	310965	1.62%	0.230%
22	12.561	1806	1809	1811	rVV	297359	434882	2.27%	0.322%
23	12.585	1811	1813	1817	rVV	305941	408641	2.13%	0.303%
24	12.637	1817	1822	1825	rVV	651539	1068555	5.57%	0.792%
25	12.673	1825	1828	1833	rVB	281619	382890	2.00%	0.284%
26	12.826	1846	1854	1858	rVV	637420	1079968	5.63%	0.800%
27	12.885	1858	1864	1868	rVV	2602692	4515635	23.55%	3.345%
28	12.920	1868	1870	1872	rVV	1190919	1471425	7.67%	1.090%
29	12.955	1872	1876	1883	rVV2	3395035	6294442	32.83%	4.663%
30	13.126	1897	1905	1912	rBV	1161739	2252453	11.75%	1.669%
31	13.190	1912	1916	1922	rVV2	363143	566067	2.95%	0.419%
32	13.273	1923	1930	1936	rVV	5921721	9373826	48.89%	6.944%
33	13.349	1939	1943	1948	rVV3	257758	585737	3.05%	0.434%
34	13.408	1949	1953	1958	rVV3	308533	612493	3.19%	0.454%

Data Path : Z:\VOASRV\HPCHEM1\MSVOA D\DATA\VD100720\
 Data File : VD067161.D
 Acq On : 07 Oct 2020 19:14
 Operator : VA/SY
 Sample : L4281-03
 Misc : 5.00G/5.00ml/MSVOA D/SOIL
 ALS Vial : 22 Sample Multiplier: 1

Instrument :
 MSVOA_D
 ClientSampleId :
 49-93

Integration Parameters: RTEINT.P

Integrator: RTE
 Smoothing : ON Filtering: 5
 Sampling : 1 Min Area: 3 % of largest Peak
 Start Thrs: 0.2 Max Peaks: 100
 Stop Thrs : 0 Peak Location: TOP

If leading or trailing edge < 100 prefer < Baseline drop else tangent >
 Peak separation: 5

Method : Z:\VOASRV\HPCHEM1\MSVOA_D\METHOD\82D100120S.M
 Title : SW846 8260

35	13.467	1958	1963	1967	rVV2	706711	1312667	6.85%	0.972%
36	13.514	1967	1971	1975	rVV3	498228	927890	4.84%	0.687%
37	13.579	1978	1982	1984	rVV	899451	1360762	7.10%	1.008%
38	13.608	1984	1987	1992	rVV	1728997	2815351	14.68%	2.086%
39	13.679	1992	1999	2005	rVV	4052424	6641358	34.64%	4.920%
40	13.743	2005	2010	2012	rVV2	709073	1179984	6.15%	0.874%
41	13.779	2012	2016	2019	rVV2	1575934	2694991	14.06%	1.997%
42	13.820	2019	2023	2032	rVB3	1441234	2937031	15.32%	2.176%
43	13.902	2032	2037	2042	rBV	2174270	3108707	16.21%	2.303%
44	13.979	2042	2050	2055	rBV	459795	746685	3.89%	0.553%
45	14.037	2055	2060	2063	rBV	731731	1223559	6.38%	0.906%
46	14.067	2063	2065	2070	rVB	814654	992131	5.17%	0.735%
47	14.126	2070	2075	2080	rVB	1150762	1754854	9.15%	1.300%
48	14.232	2088	2093	2099	rVB2	917044	1511167	7.88%	1.120%
49	14.367	2110	2116	2121	rBV3	550381	1118007	5.83%	0.828%
50	14.420	2121	2125	2127	rVV3	378918	647681	3.38%	0.480%
51	14.449	2127	2130	2133	rVV	682281	1104439	5.76%	0.818%
52	14.490	2133	2137	2141	rVV	1014458	1538794	8.03%	1.140%
53	14.532	2141	2144	2148	rVV2	460089	616035	3.21%	0.456%
54	14.573	2148	2151	2159	rVB3	301247	476750	2.49%	0.353%
55	14.673	2164	2168	2172	rVV2	347939	484388	2.53%	0.359%
56	14.720	2172	2176	2180	rVV3	549489	1045718	5.45%	0.775%
57	14.761	2180	2183	2188	rVB2	913494	1313203	6.85%	0.973%
58	14.832	2188	2195	2202	rBV3	1213802	3014629	15.72%	2.233%
59	14.890	2202	2205	2212	rVB2	302898	501391	2.61%	0.371%
60	14.996	2217	2223	2230	rVB	580904	956865	4.99%	0.709%
61	15.108	2237	2242	2246	rBV2	310639	548932	2.86%	0.407%
62	15.220	2254	2261	2270	rVB3	360296	863382	4.50%	0.640%
63	15.302	2271	2275	2281	rVB9	141064	262518	1.37%	0.194%
64	15.379	2282	2288	2289	rBV4	152208	244182	1.27%	0.181%
65	15.408	2290	2293	2299	rVB	319605	538626	2.81%	0.399%
66	15.467	2299	2303	2308	rBV	245379	389291	2.03%	0.288%
67	15.520	2308	2312	2316	rBV4	172697	344488	1.80%	0.255%
68	15.608	2323	2327	2337	rVB2	339807	669429	3.49%	0.496%
69	15.714	2337	2345	2352	rBV3	203598	518895	2.71%	0.384%
70	15.884	2364	2374	2375	rBV3	129915	282337	1.47%	0.209%
71	15.926	2376	2381	2389	rVB2	467489	926741	4.83%	0.687%

Data Path : Z:\VOASRV\HPCHEM1\MSVOA D\DATA\VD100720\
Data File : VD067161.D
Acq On : 07 Oct 2020 19:14
Operator : VA/SY
Sample : L4281-03
Misc : 5.00G/5.00ml/MSVOA D/SOIL
ALS Vial : 22 Sample Multiplier: 1

Instrument :
MSVOA_D
ClientSampleId :
49-93

Integration Parameters: RTEINT.P
Integrator: RTE
Smoothing : ON Filtering: 5
Sampling : 1 Min Area: 3 % of largest Peak
Start Thrs: 0.2 Max Peaks: 100
Stop Thrs : 0 Peak Location: TOP

If leading or trailing edge < 100 prefer < Baseline drop else tangent >
Peak separation: 5

Method : Z:\VOASRV\HPCHEM1\MSVOA_D\METHOD\82D100120S.M
Title : SW846 8260

72	16.090	2403	2409	2426	rVB3	123613	425012	2.22%	0.315%
73	16.243	2427	2435	2442	rBV3	221112	528338	2.76%	0.391%
74	16.443	2461	2469	2475	rBV4	223684	493800	2.58%	0.366%
75	16.514	2475	2481	2488	rBV2	189513	409230	2.13%	0.303%
76	16.720	2509	2516	2523	rBV7	96463	266229	1.39%	0.197%

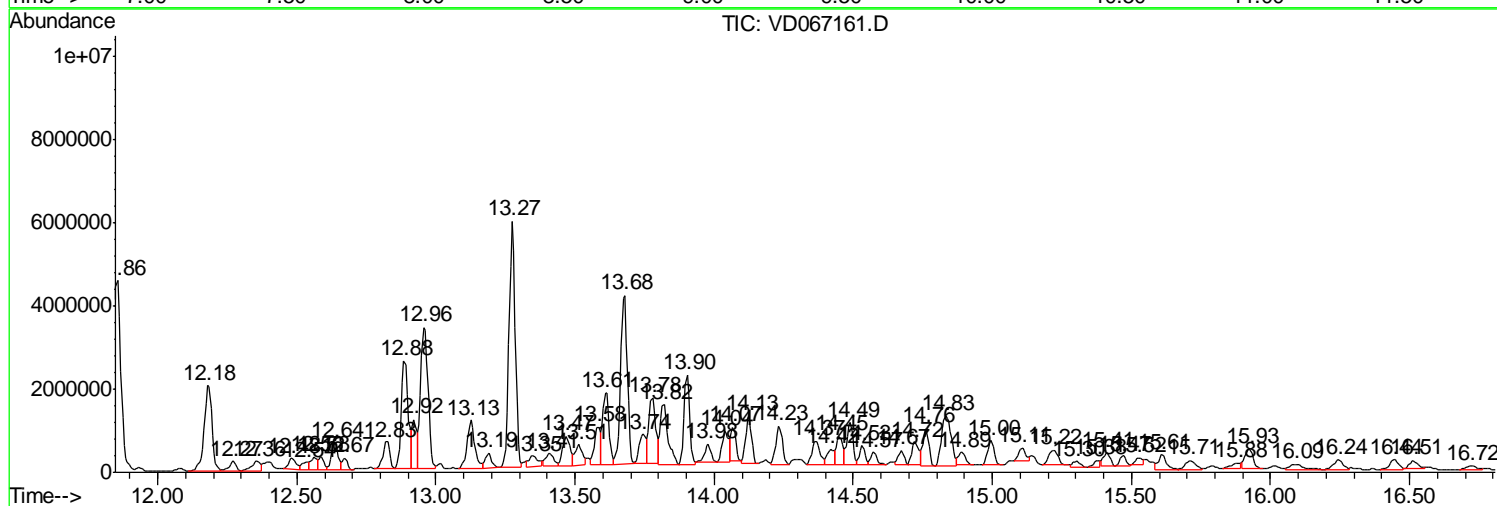
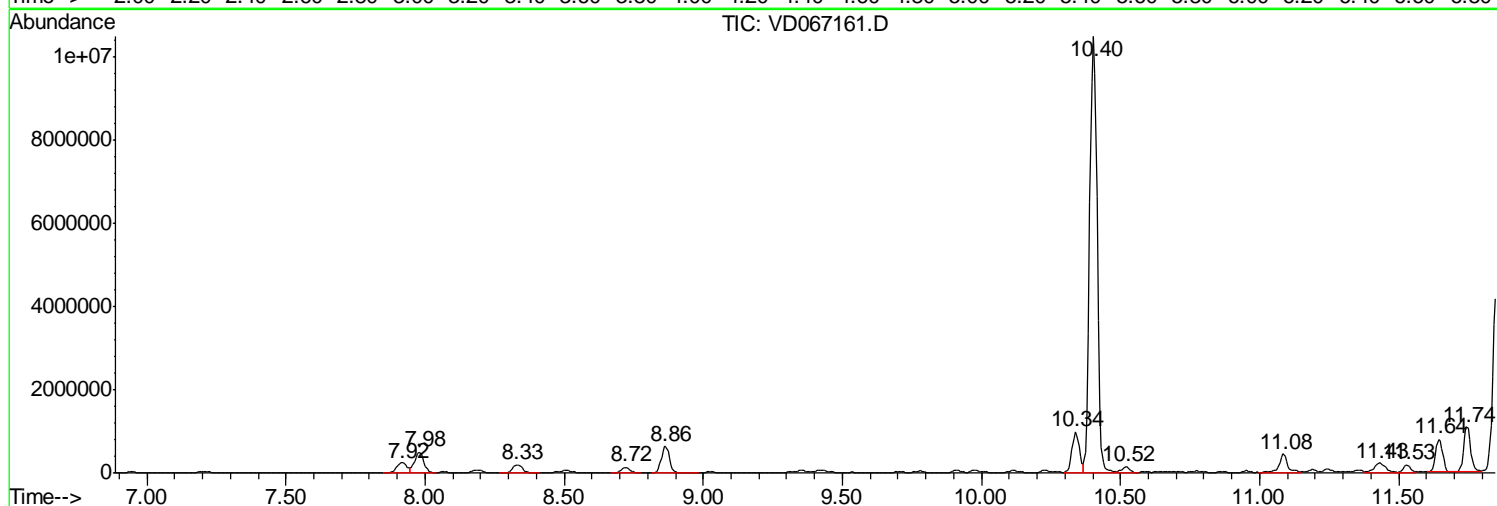
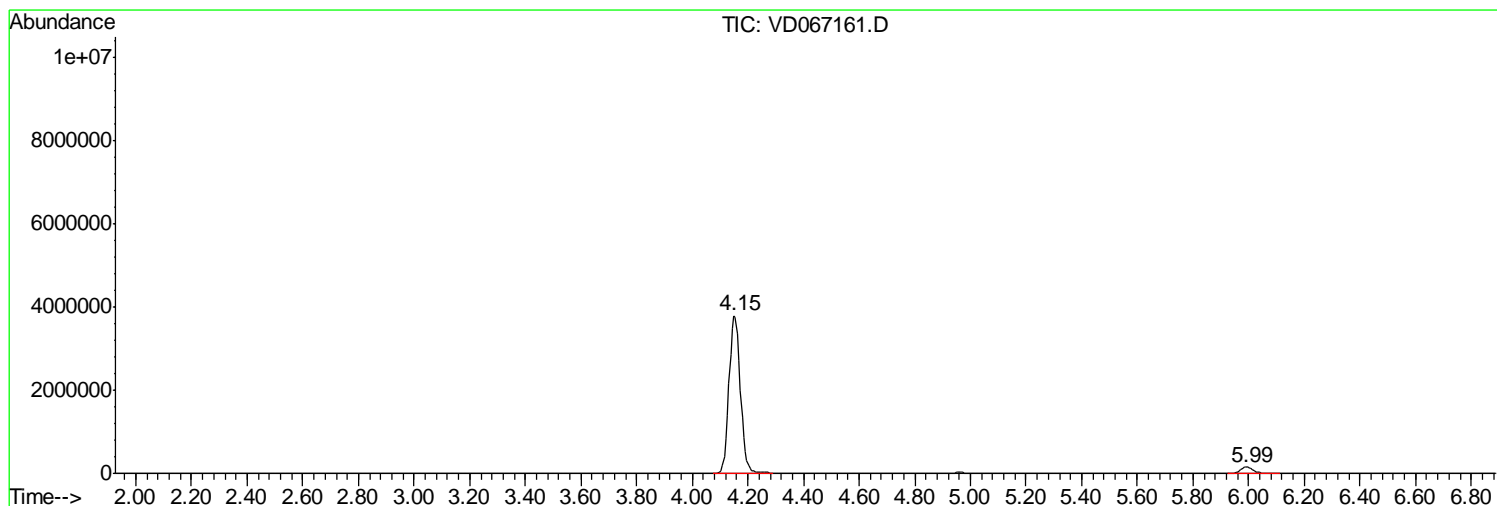
Sum of corrected areas: 134982043

Data Path : Z:\VOASRV\HPCHEM1\MSVOA D\DATA\VD100720\
 Data File : VD067161.D
 Acq On : 07 Oct 2020 19:14
 Operator : VA/SY
 Sample : L4281-03
 Misc : 5.00G/5.00ml/MSVOA D/SOIL
 ALS Vial : 22 Sample Multiplier: 1

Instrument :
 MSVOA_D
 ClientSampled :
 49-93

Quant Method : Z:\VOASRV\HPCHEM1\MSVOA_D\METHOD\82D100120S.M
 Quant Title : SW846 8260

TIC Library : C:\DATABASE\NIST11.L
 TIC Integration Parameters: LSCINT.P



Data Path : Z:\VOASRV\HPCHEM1\MSVOA D\DATA\VD100720\
 Data File : VD067161.D
 Acq On : 07 Oct 2020 19:14
 Operator : VA/SY
 Sample : L4281-03
 Misc : 5.00G/5.00ml/MSVOA D/SOIL
 ALS Vial : 22 Sample Multiplier: 1

Instrument :
 MSVOA_D
 ClientSampled :
 49-93

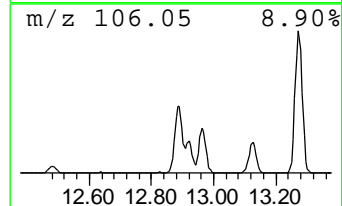
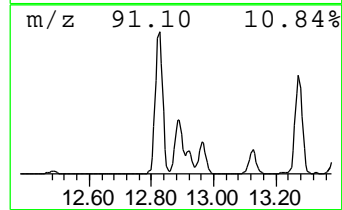
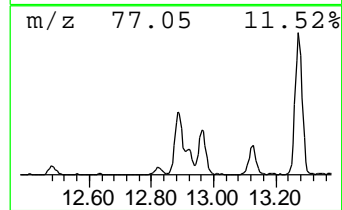
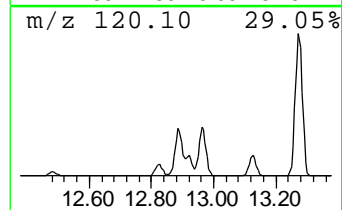
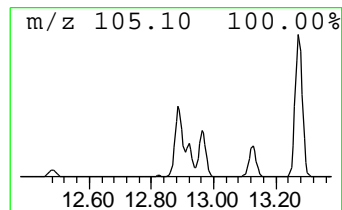
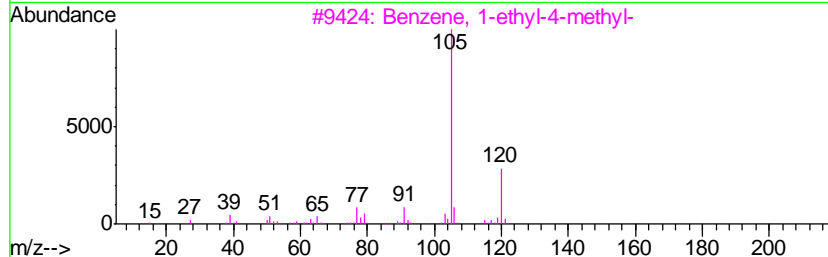
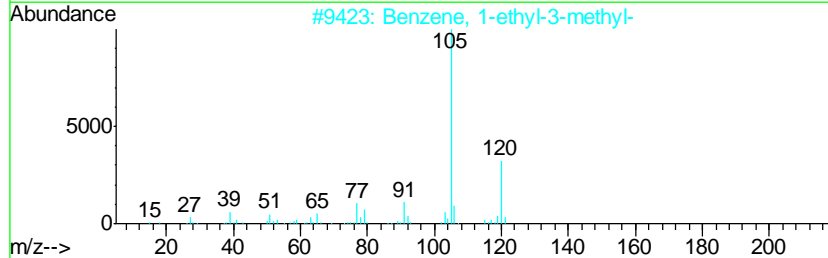
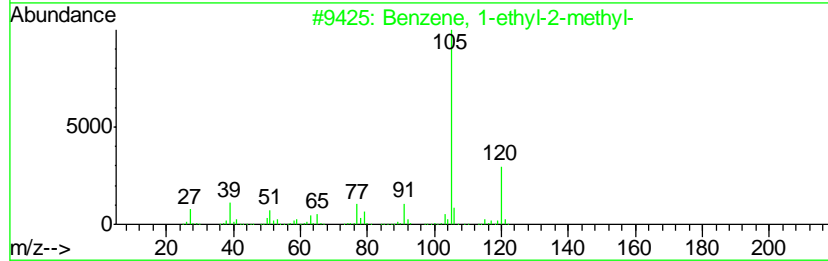
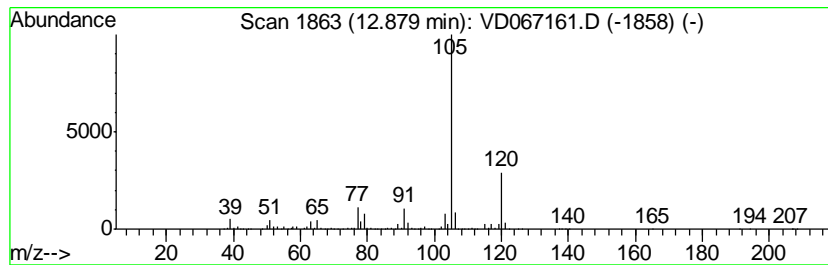
Quant Method : Z:\VOASRV\HPCHEM1\MSVOA_D\METHOD\82D100120S.M
 Quant Title : SW846 8260

TIC Library : C:\DATABASE\NIST11.L
 TIC Integration Parameters: LSCINT.P

 Peak Number 1 Benzene, 1-ethyl-2-methyl- Concentration Rank 2

R.T.	EstConc	Area	Relative to ISTD	R.T.
12.88	165.92 ug/l	4515640	1,4-Dichlorobenzene-d4	13.58

Hit#	of	Tentative ID	MW	MolForm	CAS#	Qual
1	5	Benzene, 1-ethyl-2-methyl-	120	C9H12	000611-14-3	95
2		Benzene, 1-ethyl-3-methyl-	120	C9H12	000620-14-4	94
3		Benzene, 1-ethyl-4-methyl-	120	C9H12	000622-96-8	91
4		Benzene, 1,2,4-trimethyl-	120	C9H12	000095-63-6	91
5		Mesitylene	120	C9H12	000108-67-8	91



Data Path : Z:\VOASRV\HPCHEM1\MSVOA D\DATA\VD100720\
 Data File : VD067161.D
 Acq On : 07 Oct 2020 19:14
 Operator : VA/SY
 Sample : L4281-03
 Misc : 5.00G/5.00ml/MSVOA D/SOIL
 ALS Vial : 22 Sample Multiplier: 1

Instrument :
 MSVOA_D
 ClientSampled :
 49-93

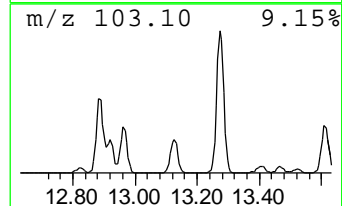
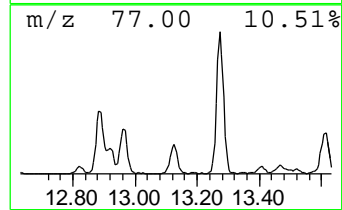
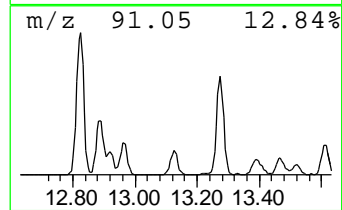
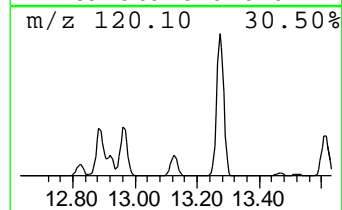
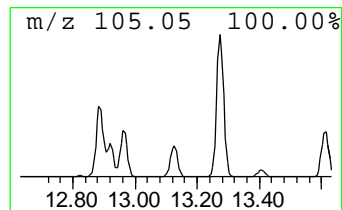
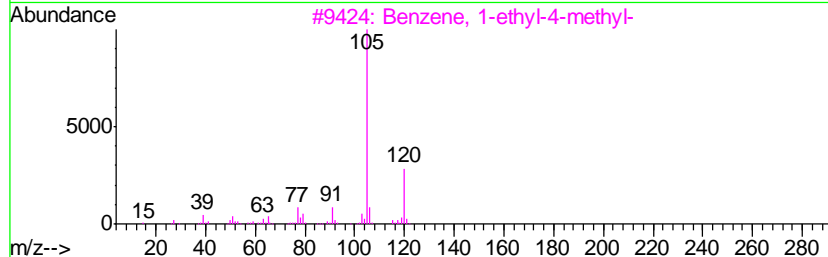
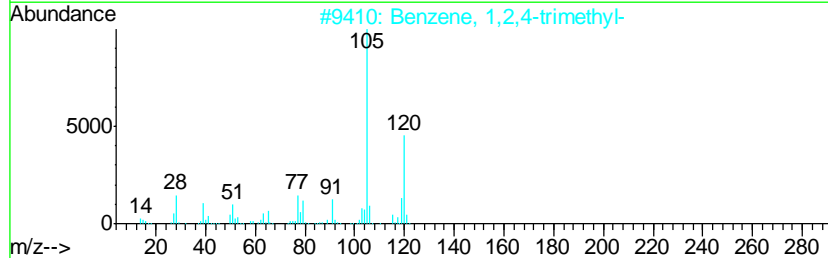
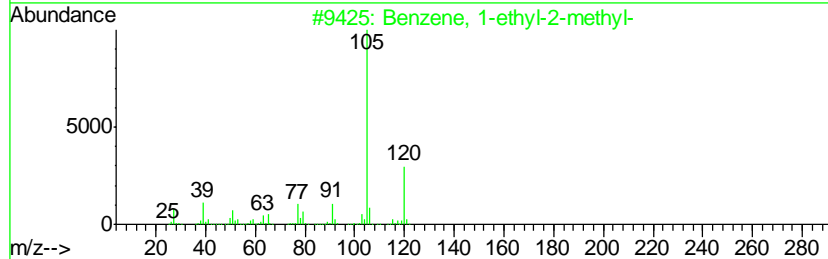
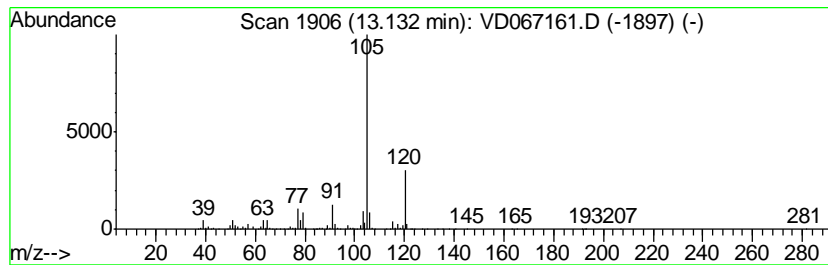
Quant Method : Z:\VOASRV\HPCHEM1\MSVOA_D\METHOD\82D100120S.M
 Quant Title : SW846 8260

TIC Library : C:\DATABASE\NIST11.L
 TIC Integration Parameters: LSCINT.P

 Peak Number 2 Benzene, 1,2,4-trimethyl- Concentration Rank 6

R.T.	EstConc	Area	Relative to ISTD	R.T.
13.13	82.76 ug/l	2252450	1,4-Dichlorobenzene-d4	13.58

Hit#	of	Tentative ID	MW	MolForm	CAS#	Qual
1	5	Benzene, 1-ethyl-2-methyl-	120	C9H12	000611-14-3	93
2		Benzene, 1,2,4-trimethyl-	120	C9H12	000095-63-6	90
3		Benzene, 1-ethyl-4-methyl-	120	C9H12	000622-96-8	90
4		Mesitylene	120	C9H12	000108-67-8	90
5		Benzene, 1-ethyl-3-methyl-	120	C9H12	000620-14-4	90



Data Path : Z:\VOASRV\HPCHEM1\MSVOA D\DATA\VD100720\
 Data File : VD067161.D
 Acq On : 07 Oct 2020 19:14
 Operator : VA/SY
 Sample : L4281-03
 Misc : 5.00G/5.00ml/MSVOA D/SOIL
 ALS Vial : 22 Sample Multiplier: 1

Instrument :
 MSVOA_D
 ClientSampleID :
 49-93

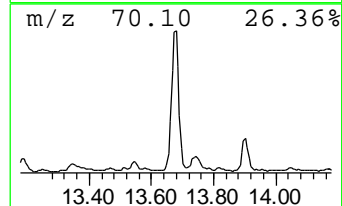
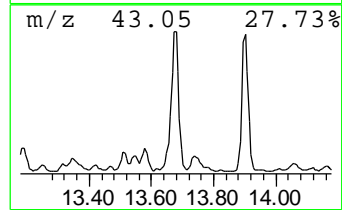
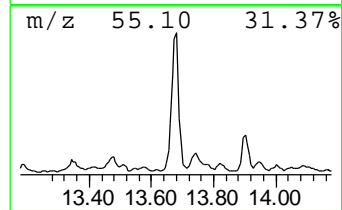
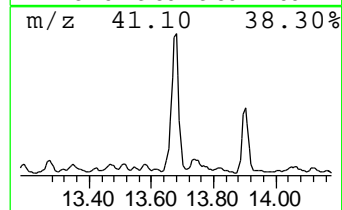
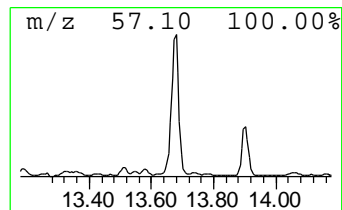
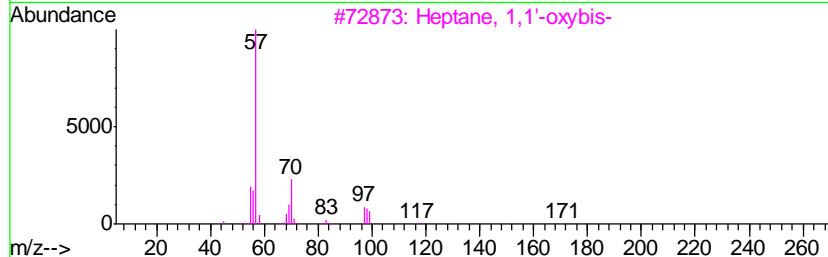
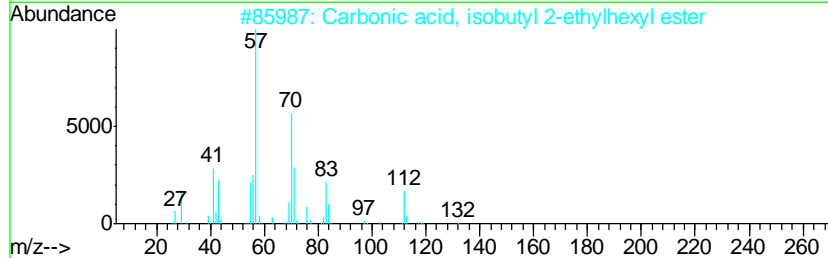
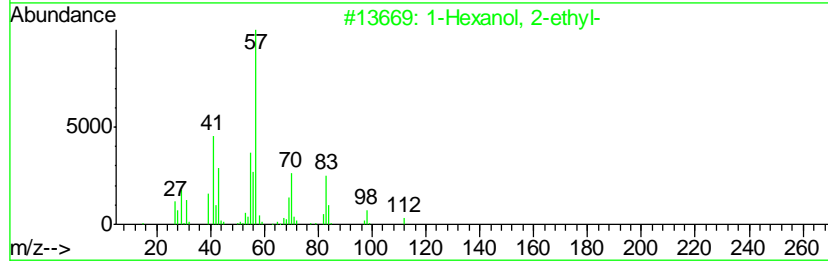
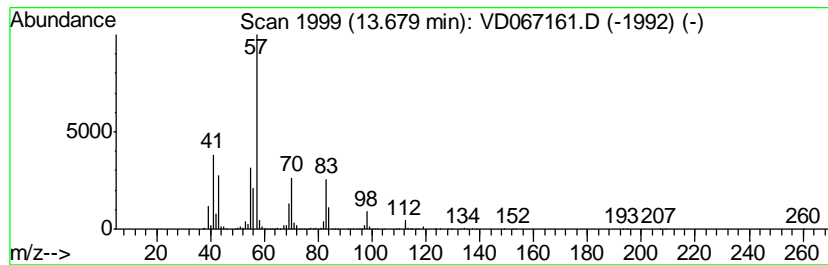
Quant Method : Z:\VOASRV\HPCHEM1\MSVOA_D\METHOD\82D100120S.M
 Quant Title : SW846 8260

TIC Library : C:\DATABASE\NIST11.L
 TIC Integration Parameters: LSCINT.P

 Peak Number 3 1-Hexanol, 2-ethyl- Concentration Rank 1

R.T.	EstConc	Area	Relative to ISTD	R.T.
13.68	244.03 ug/l	6641360	1,4-Dichlorobenzene-d4	13.58

Hit#	of	Tentative ID	MW	MolForm	CAS#	Qual
1	5	1-Hexanol, 2-ethyl-	130	C8H18O	000104-76-7	90
2		Carbonic acid, isobutyl 2-ethylh...	230	C13H26O3	1000357-82-9	53
3		Heptane, 1,1'-oxybis-	214	C14H30O	000629-64-1	50
4		2-Propyl-1-pentanol	130	C8H18O	058175-57-8	50
5		Decanal	156	C10H20O	000112-31-2	50



Data Path : Z:\VOASRV\HPCHEM1\MSVOA D\DATA\VD100720\
 Data File : VD067161.D
 Acq On : 07 Oct 2020 19:14
 Operator : VA/SY
 Sample : L4281-03
 Misc : 5.00G/5.00ml/MSVOA D/SOIL
 ALS Vial : 22 Sample Multiplier: 1

Instrument :
 MSVOA_D
 ClientSampleID :
 49-93

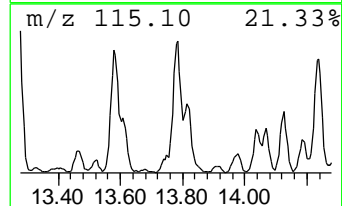
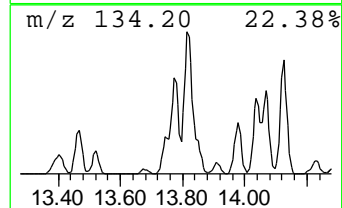
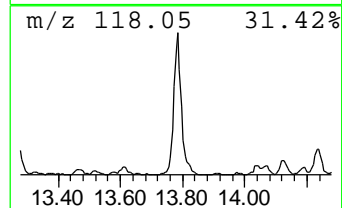
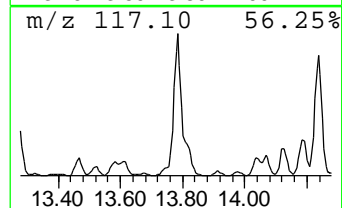
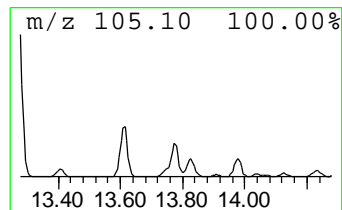
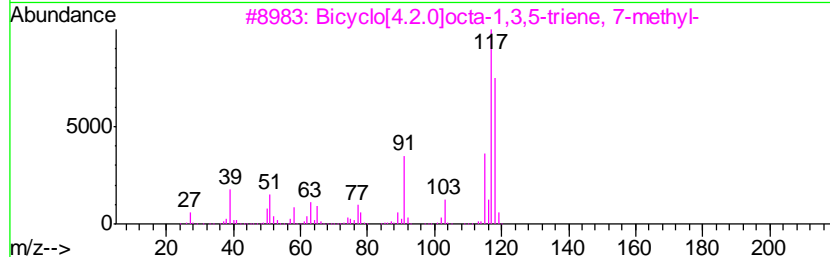
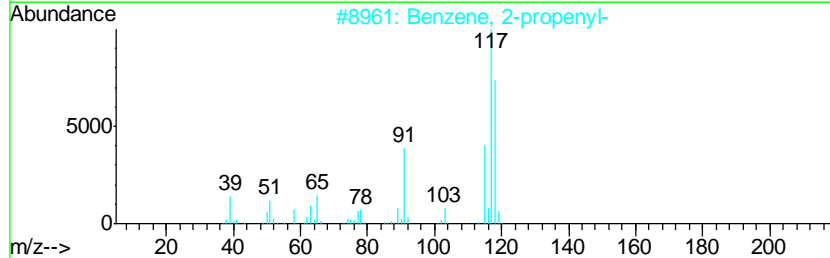
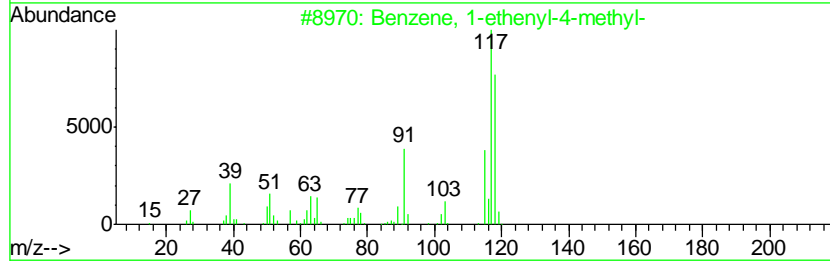
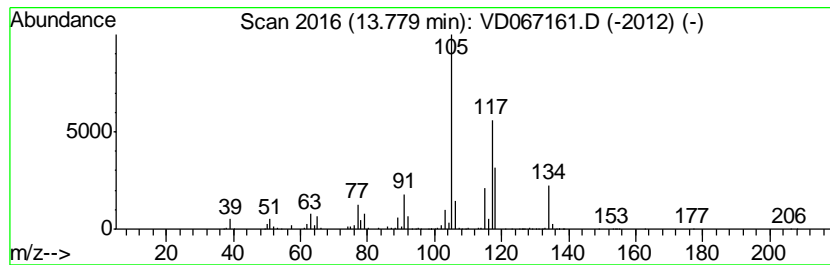
Quant Method : Z:\VOASRV\HPCHEM1\MSVOA_D\METHOD\82D100120S.M
 Quant Title : SW846 8260

TIC Library : C:\DATABASE\NIST11.L
 TIC Integration Parameters: LSCINT.P

 Peak Number 4 Benzene, 1-ethenyl-4-methyl- Concentration Rank 5

R.T.	EstConc	Area	Relative to ISTD	R.T.
13.78	99.03 ug/l	2694990	1,4-Dichlorobenzene-d4	13.58

Hit#	of	Tentative ID	MW	MolForm	CAS#	Qual
1	5	Benzene, 1-ethenyl-4-methyl-	118	C9H10	000622-97-9	55
2		Benzene, 2-propenyl-	118	C9H10	000300-57-2	45
3		Bicyclo[4.2.0]octa-1,3,5-triene,...	118	C9H10	055337-80-9	45
4		Benzene, 1-propenyl-	118	C9H10	000637-50-3	43
5		Tetracyclo[3.3.1.0(2,8).0(4,6)]-...	118	C9H10	1000191-13-7	43



Data Path : Z:\VOASRV\HPCHEM1\MSVOA D\DATA\VD100720\
 Data File : VD067161.D
 Acq On : 07 Oct 2020 19:14
 Operator : VA/SY
 Sample : L4281-03
 Misc : 5.00G/5.00ml/MSVOA D/SOIL
 ALS Vial : 22 Sample Multiplier: 1

Instrument :
 MSVOA_D
 ClientSampleID :
 49-93

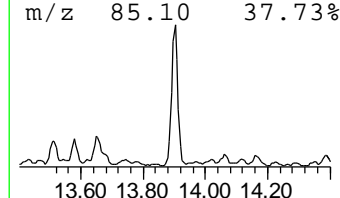
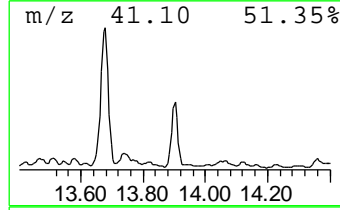
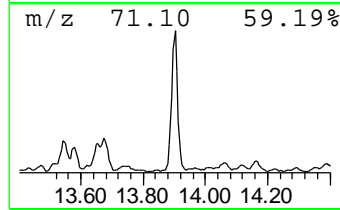
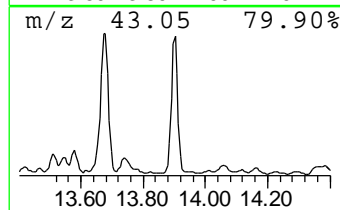
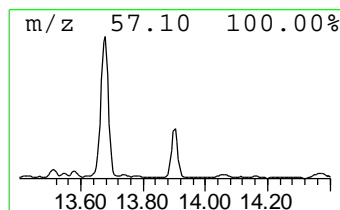
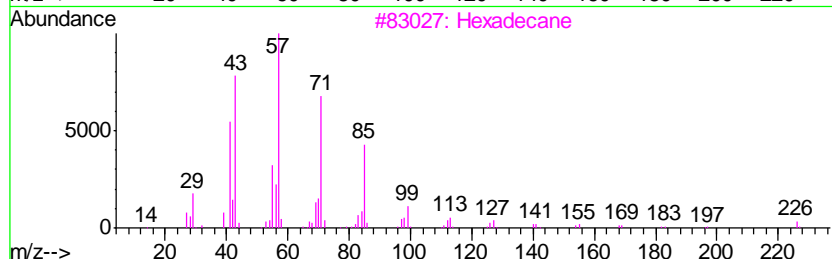
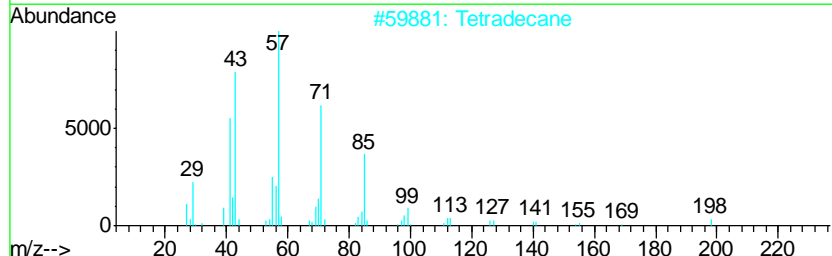
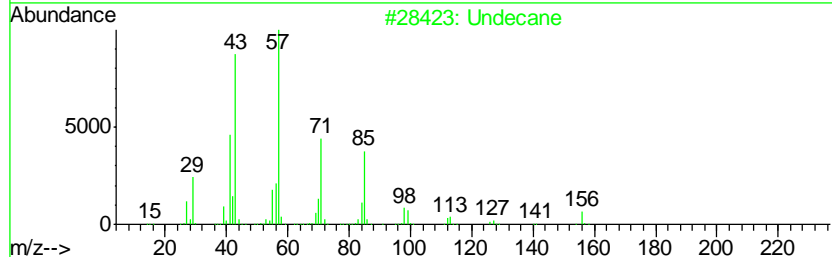
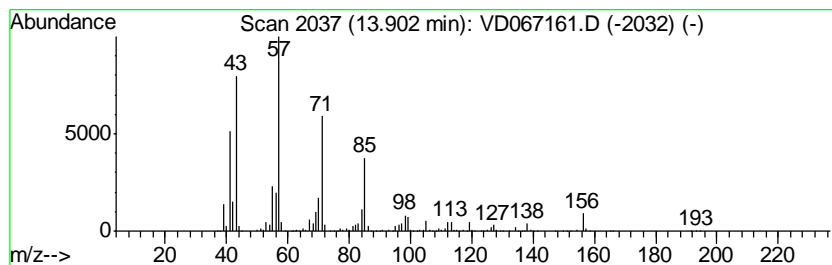
Quant Method : Z:\VOASRV\HPCHEM1\MSVOA_D\METHOD\82D100120S.M
 Quant Title : SW846 8260

TIC Library : C:\DATABASE\NIST11.L
 TIC Integration Parameters: LSCINT.P

 Peak Number 5 Undecane Concentration Rank 3

R.T.	EstConc	Area	Relative to ISTD	R.T.
13.90	114.23 ug/l	3108710	1,4-Dichlorobenzene-d4	13.58

Hit#	of	Tentative ID	MW	MolForm	CAS#	Qual
1	5	Undecane	156	C11H24	001120-21-4	96
2		Tetradecane	198	C14H30	000629-59-4	80
3		Hexadecane	226	C16H34	000544-76-3	80
4		Tridecane	184	C13H28	000629-50-5	80
5		Heptadecane, 2,6,10,14-tetramethyl-	296	C21H44	018344-37-1	72



Data Path : Z:\VOASRV\HPCHEM1\MSVOA D\DATA\VD100720\
 Data File : VD067161.D
 Acq On : 07 Oct 2020 19:14
 Operator : VA/SY
 Sample : L4281-03
 Misc : 5.00G/5.00ml/MSVOA D/SOIL
 ALS Vial : 22 Sample Multiplier: 1

Instrument :
 MSVOA_D
 ClientSampleID :
 49-93

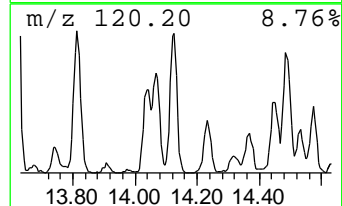
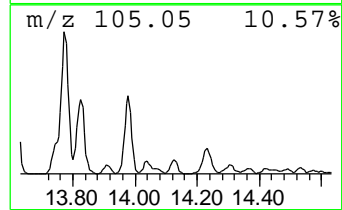
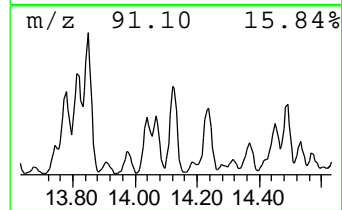
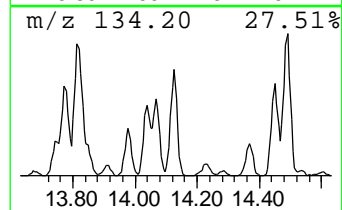
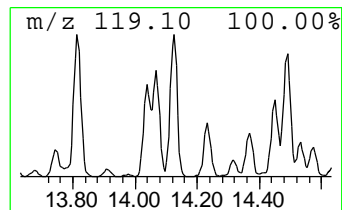
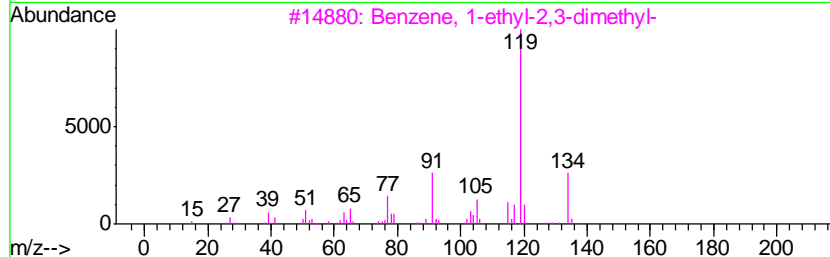
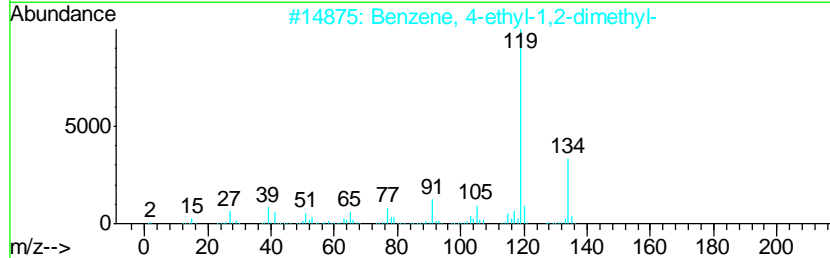
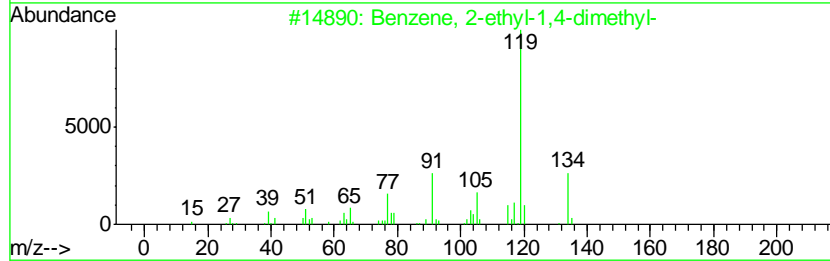
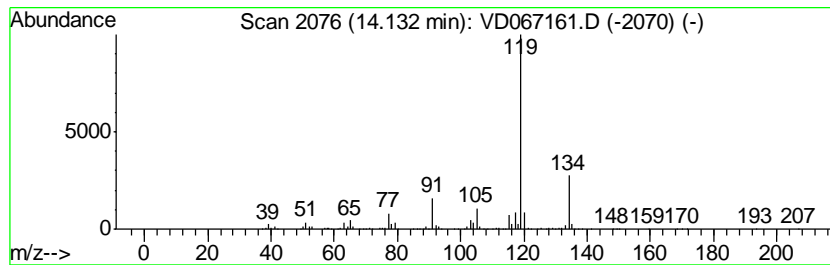
Quant Method : Z:\VOASRV\HPCHEM1\MSVOA_D\METHOD\82D100120S.M
 Quant Title : SW846 8260

TIC Library : C:\DATABASE\NIST11.L
 TIC Integration Parameters: LSCINT.P

 Peak Number 6 Benzene, 2-ethyl-1,4-dimethyl- Concentration Rank 7

R.T.	EstConc	Area	Relative to ISTD	R.T.
14.13	64.48 ug/l	1754850	1,4-Dichlorobenzene-d4	13.58

Hit#	of	Tentative ID	MW	MolForm	CAS#	Qual
1	5	Benzene, 2-ethyl-1,4-dimethyl-	134	C10H14	001758-88-9	96
2		Benzene, 4-ethyl-1,2-dimethyl-	134	C10H14	000934-80-5	95
3		Benzene, 1-ethyl-2,3-dimethyl-	134	C10H14	000933-98-2	95
4		Benzene, 2-ethyl-1,3-dimethyl-	134	C10H14	002870-04-4	95
5		o-Cymene	134	C10H14	000527-84-4	95



Data Path : Z:\VOASRV\HPCHEM1\MSVOA D\DATA\VD100720\
 Data File : VD067161.D
 Acq On : 07 Oct 2020 19:14
 Operator : VA/SY
 Sample : L4281-03
 Misc : 5.00G/5.00ml/MSVOA D/SOIL
 ALS Vial : 22 Sample Multiplier: 1

Instrument :
 MSVOA_D
 ClientSampled :
 49-93

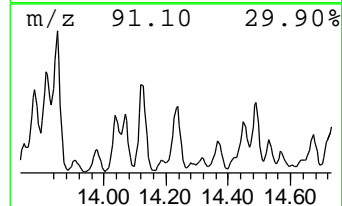
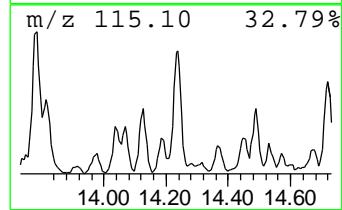
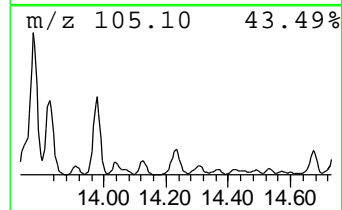
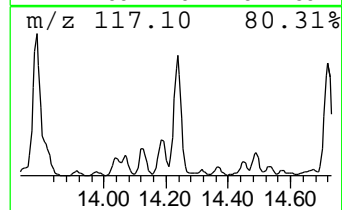
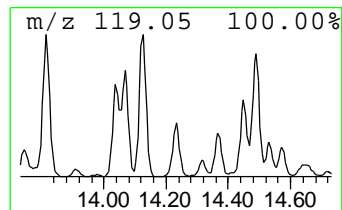
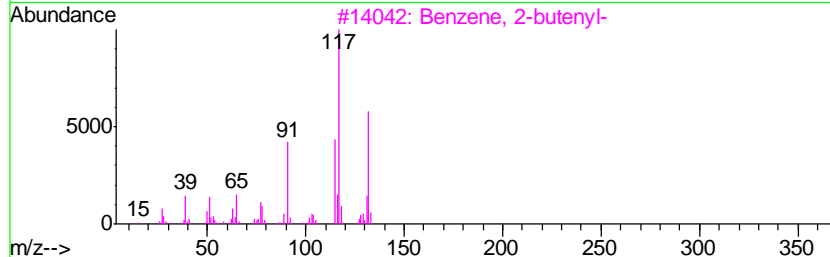
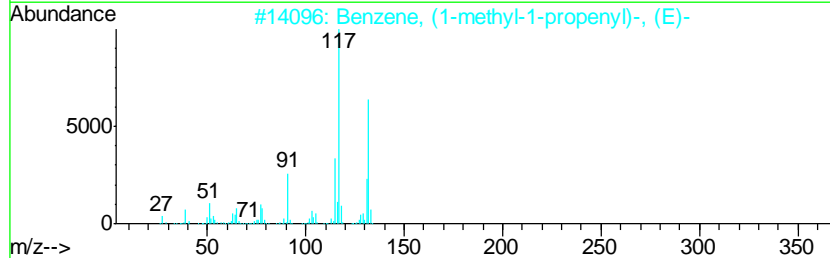
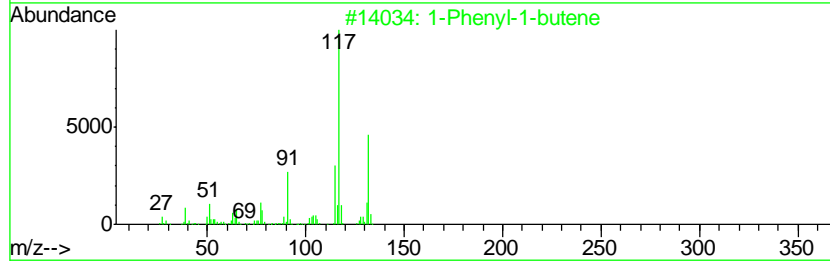
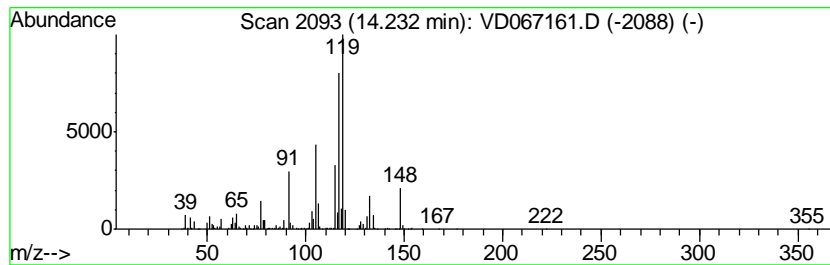
Quant Method : Z:\VOASRV\HPCHEM1\MSVOA_D\METHOD\82D100120S.M
 Quant Title : SW846 8260

TIC Library : C:\DATABASE\NIST11.L
 TIC Integration Parameters: LSCINT.P

 Peak Number 7 1-Phenyl-1-butene Concentration Rank 9

R.T.	EstConc	Area	Relative to ISTD	R.T.
14.23	55.53 ug/l	1511170	1,4-Dichlorobenzene-d4	13.58

Hit#	of	Tentative ID	MW	MolForm	CAS#	Qual
1	5	1-Phenyl-1-butene	132	C10H12	000824-90-8	50
2		Benzene, (1-methyl-1-propenyl)-, ...	132	C10H12	000768-00-3	50
3		Benzene, 2-butenyl-	132	C10H12	001560-06-1	50
4		Benzene, 2-ethenyl-1,4-dimethyl-	132	C10H12	002039-89-6	50
5		3-Phenylbut-1-ene	132	C10H12	000934-10-1	46



Data Path : Z:\VOASRV\HPCHEM1\MSVOA D\DATA\VD100720\
 Data File : VD067161.D
 Acq On : 07 Oct 2020 19:14
 Operator : VA/SY
 Sample : L4281-03
 Misc : 5.00G/5.00ml/MSVOA D/SOIL
 ALS Vial : 22 Sample Multiplier: 1

Instrument :
 MSVOA_D
 ClientSampleID :
 49-93

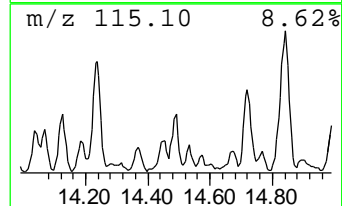
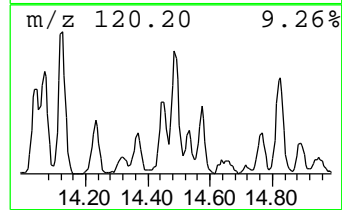
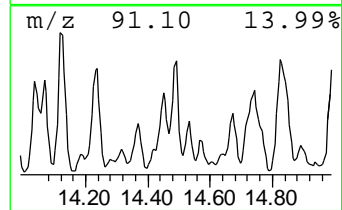
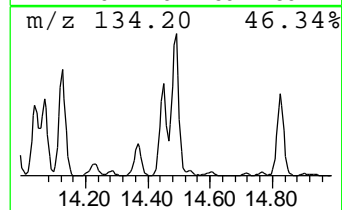
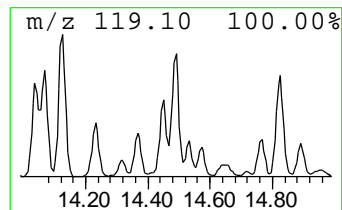
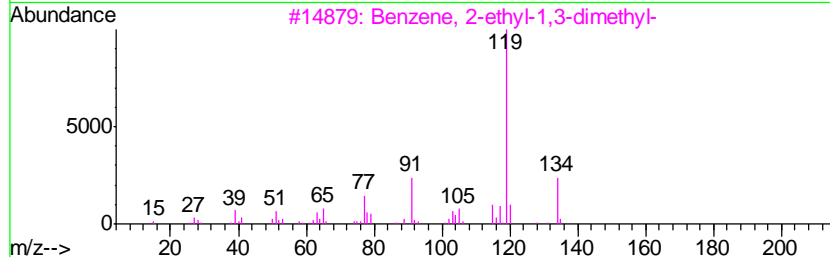
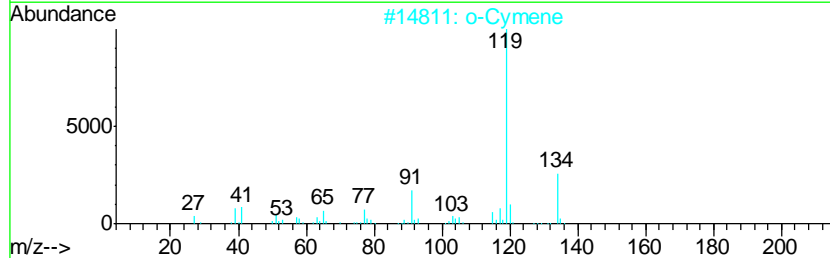
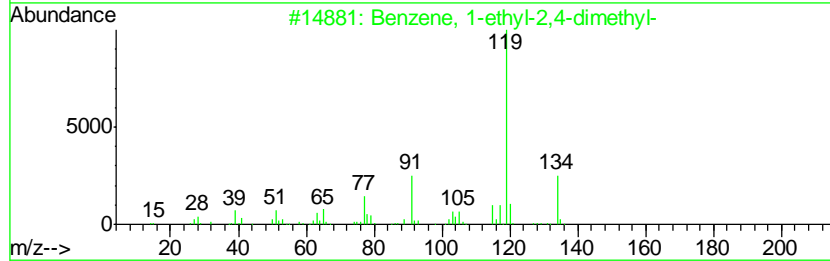
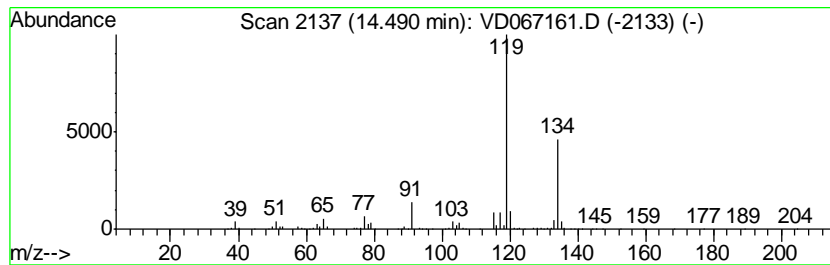
Quant Method : Z:\VOASRV\HPCHEM1\MSVOA_D\METHOD\82D100120S.M
 Quant Title : SW846 8260

TIC Library : C:\DATABASE\NIST11.L
 TIC Integration Parameters: LSCINT.P

 Peak Number 8 Benzene, 1-ethyl-2,4-dimethyl- Concentration Rank 8

R.T.	EstConc	Area	Relative to ISTD	R.T.
14.49	56.54 ug/l	1538790	1,4-Dichlorobenzene-d4	13.58

Hit#	of	Tentative ID	MW	MolForm	CAS#	Qual
1	5	Benzene, 1-ethyl-2,4-dimethyl-	134	C10H14	000874-41-9	95
2		o-Cymene	134	C10H14	000527-84-4	95
3		Benzene, 2-ethyl-1,3-dimethyl-	134	C10H14	002870-04-4	94
4		Benzene, 1,2,3,4-tetramethyl-	134	C10H14	000488-23-3	94
5		Benzene, 1,2,4,5-tetramethyl-	134	C10H14	000095-93-2	94



Data Path : Z:\VOASRV\HPCHEM1\MSVOA D\DATA\VD100720\
 Data File : VD067161.D
 Acq On : 07 Oct 2020 19:14
 Operator : VA/SY
 Sample : L4281-03
 Misc : 5.00G/5.00ml/MSVOA D/SOIL
 ALS Vial : 22 Sample Multiplier: 1

Instrument :
 MSVOA_D
 ClientSampleID :
 49-93

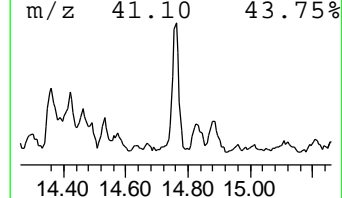
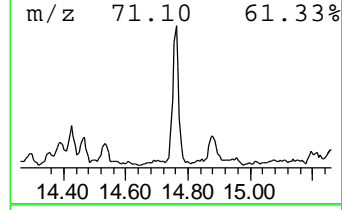
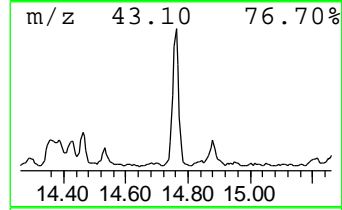
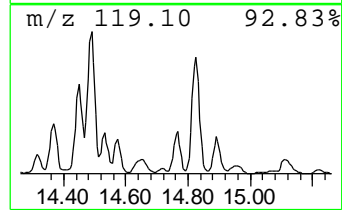
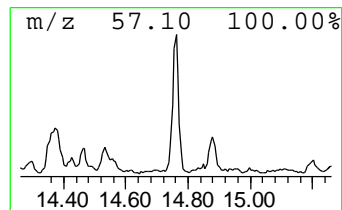
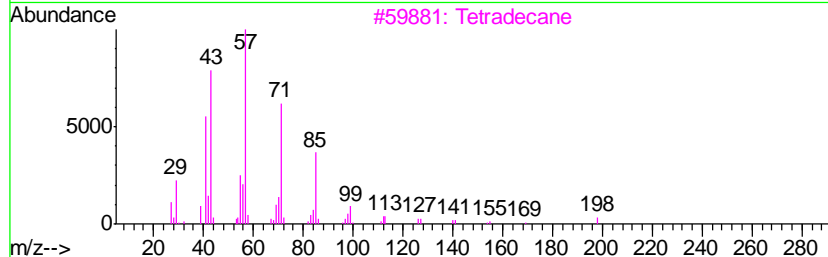
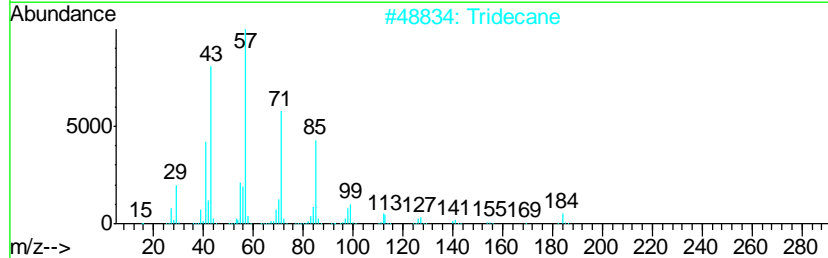
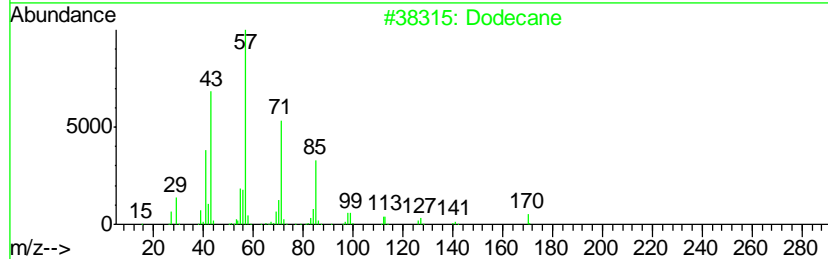
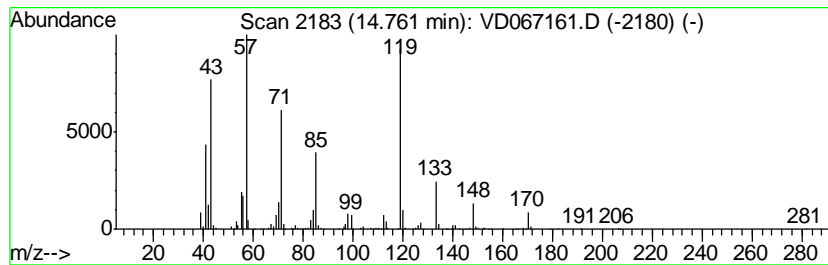
Quant Method : Z:\VOASRV\HPCHEM1\MSVOA_D\METHOD\82D100120S.M
 Quant Title : SW846 8260

TIC Library : C:\DATABASE\NIST11.L
 TIC Integration Parameters: LSCINT.P

 Peak Number 9 Dodecane Concentration Rank 10

R.T.	EstConc	Area	Relative to ISTD	R.T.
14.76	48.25 ug/l	1313200	1,4-Dichlorobenzene-d4	13.58

Hit#	of	Tentative ID	MW	MolForm	CAS#	Qual
1	5	Dodecane	170	C12H26	000112-40-3	95
2		Tridecane	184	C13H28	000629-50-5	41
3		Tetradecane	198	C14H30	000629-59-4	38
4		Decane, 2,3,6-trimethyl-	184	C13H28	062238-12-4	38
5		Hexadecane	226	C16H34	000544-76-3	35



Data Path : Z:\VOASRV\HPCHEM1\MSVOA D\DATA\VD100720\
 Data File : VD067161.D
 Acq On : 07 Oct 2020 19:14
 Operator : VA/SY
 Sample : L4281-03
 Misc : 5.00G/5.00ml/MSVOA D/SOIL
 ALS Vial : 22 Sample Multiplier: 1

Instrument :
 MSVOA_D
 ClientSampleID :
 49-93

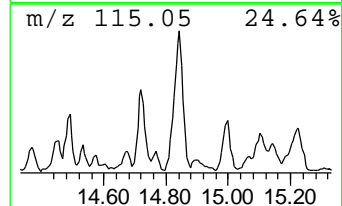
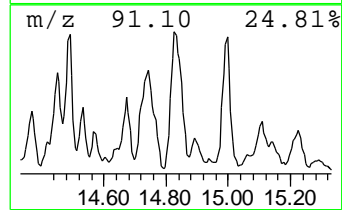
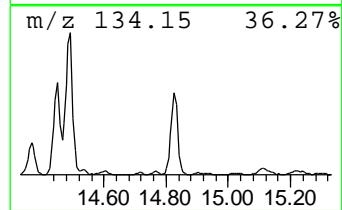
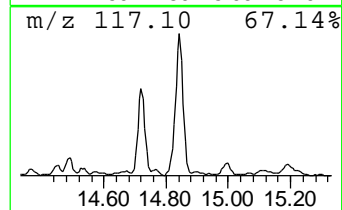
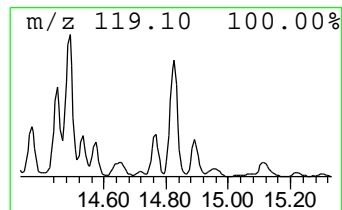
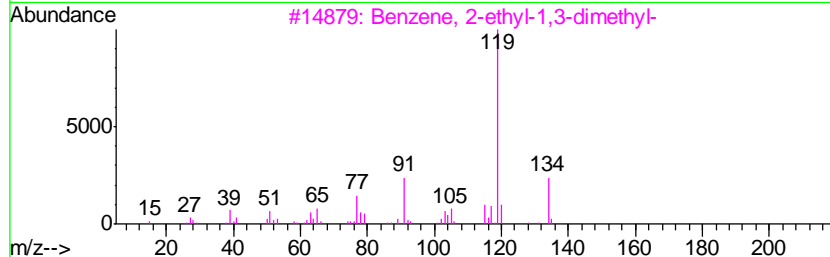
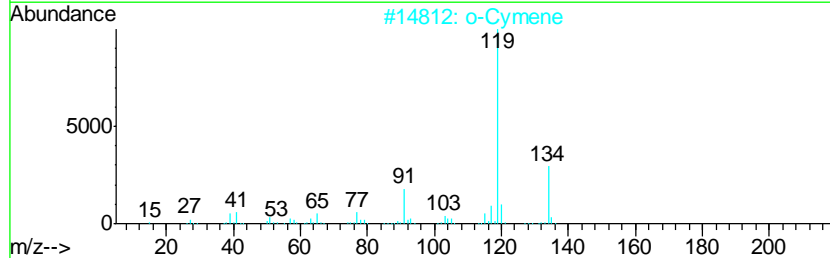
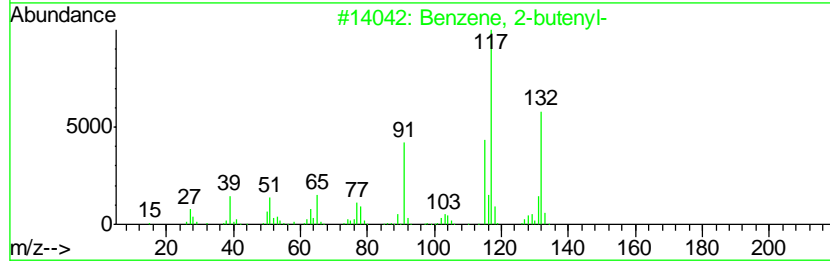
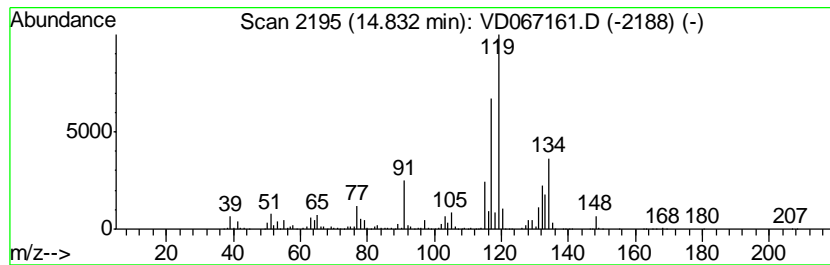
Quant Method : Z:\VOASRV\HPCHEM1\MSVOA_D\METHOD\82D100120S.M
 Quant Title : SW846 8260

TIC Library : C:\DATABASE\NIST11.L
 TIC Integration Parameters: LSCINT.P

 Peak Number 10 Benzene, 2-butenyl- Concentration Rank 4

R.T.	EstConc	Area	Relative to ISTD	R.T.
14.83	110.77 ug/l	3014630	1,4-Dichlorobenzene-d4	13.58

Hit#	of	Tentative ID	MW	MolForm	CAS#	Qual
1	5	Benzene, 2-butenyl-	132	C10H12	001560-06-1	83
2		o-Cymene	134	C10H14	000527-84-4	55
3		Benzene, 2-ethyl-1,3-dimethyl-	134	C10H14	002870-04-4	55
4		Benzene, 1-ethyl-2,4-dimethyl-	134	C10H14	000874-41-9	55
5		Benzene, 1-ethyl-2,3-dimethyl-	134	C10H14	000933-98-2	55



Data Path : Z:\VOASRV\HPCHEM1\MSVOA_D\DATA\VD100720\
 Data File : VD067161.D
 Acq On : 07 Oct 2020 19:14
 Operator : VA/SY
 Sample : L4281-03
 Misc : 5.00G/5.00ml/MSVOA_D/SOIL
 ALS Vial : 22 Sample Multiplier: 1

Instrument :
 MSVOA_D
 ClientSampled :
 49-93

Quant Method : Z:\VOASRV\HPCHEM1\MSVOA_D\METHOD\82D100120S.M
 Quant Title : SW846 8260

TIC Library : C:\DATABASE\NIST11.L
 TIC Integration Parameters: LSCINT.P

TIC Top Hit name	RT	EstConc	Units	Response	--Internal Standard--			
					#	RT	Resp	Conc
Benzene, 1-ethyl-...	12.88	165.9	ug/l	4515640	4	13.58	1360760	50.0
Benzene, 1,2,4-tr...	13.13	82.8	ug/l	2252450	4	13.58	1360760	50.0
1-Hexanol, 2-ethyl-	13.68	244.0	ug/l	6641360	4	13.58	1360760	50.0
Benzene, 1-etheny...	13.78	99.0	ug/l	2694990	4	13.58	1360760	50.0
Undecane	13.90	114.2	ug/l	3108710	4	13.58	1360760	50.0
Benzene, 2-ethyl-...	14.13	64.5	ug/l	1754850	4	13.58	1360760	50.0
1-Phenyl-1-butene	14.23	55.5	ug/l	1511170	4	13.58	1360760	50.0
Benzene, 1-ethyl-...	14.49	56.5	ug/l	1538790	4	13.58	1360760	50.0
Dodecane	14.76	48.3	ug/l	1313200	4	13.58	1360760	50.0
Benzene, 2-butenyl-	14.83	110.8	ug/l	3014630	4	13.58	1360760	50.0