

Data Path : Z:\VOASRV\HPCHEM1\MSVOA D\DATA\VD101520\
 Data File : VD067279.D
 Acq On : 15 Oct 2020 13:16
 Operator : VA/SY
 Sample : L4223-01
 Misc : 5.53G/5.00ml/MSVOA D/SOIL
 ALS Vial : 7 Sample Multiplier: 1

Instrument :
 MSVOA_D
 ClientSampleId :
 PL-01-101420

Integration Parameters: RTEINT.P
 Integrator: RTE
 Smoothing : ON Filtering: 5
 Sampling : 1 Min Area: 3 % of largest Peak
 Start Thrs: 0.2 Max Peaks: 100
 Stop Thrs : 0 Peak Location: TOP

If leading or trailing edge < 100 prefer < Baseline drop else tangent >
 Peak separation: 5

Method : Z:\VOASRV\HPCHEM1\MSVOA_D\METHOD\82D101320S.M
 Title : SW846 8260

Signal : TIC

peak #	R.T. min	first scan	max scan	last scan	PK TY	peak height	corr. area	corr. % max.	% of total
1	7.920	1009	1020	1025	rBV	256038	617270	36.72%	6.912%
2	7.979	1025	1030	1042	rVB	408870	948527	56.42%	10.621%
3	8.332	1080	1090	1100	rBV	211186	483373	28.75%	5.413%
4	8.867	1172	1181	1193	rBV	611352	1215025	72.27%	13.605%
5	10.344	1422	1432	1440	rBV	923723	1681168	100.00%	18.825%
6	11.649	1646	1654	1665	rBV	859239	1469177	87.39%	16.451%
7	12.638	1815	1822	1832	rVB	690154	1107028	65.85%	12.396%
8	13.585	1976	1983	1991	rBV	866414	1408921	83.81%	15.777%

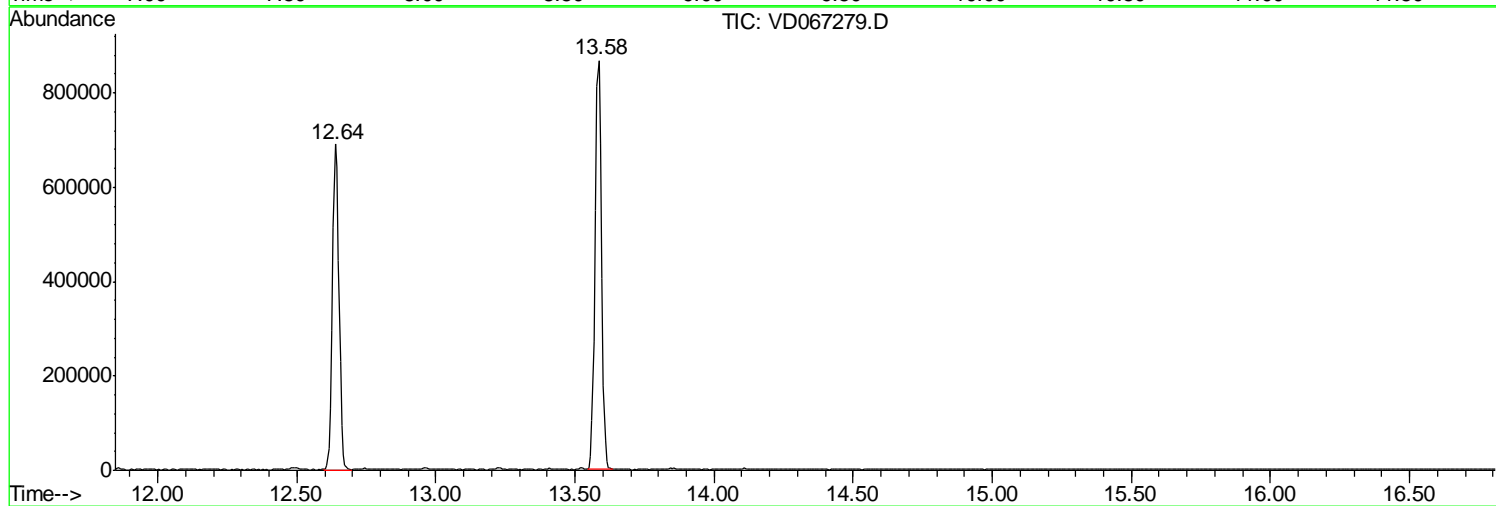
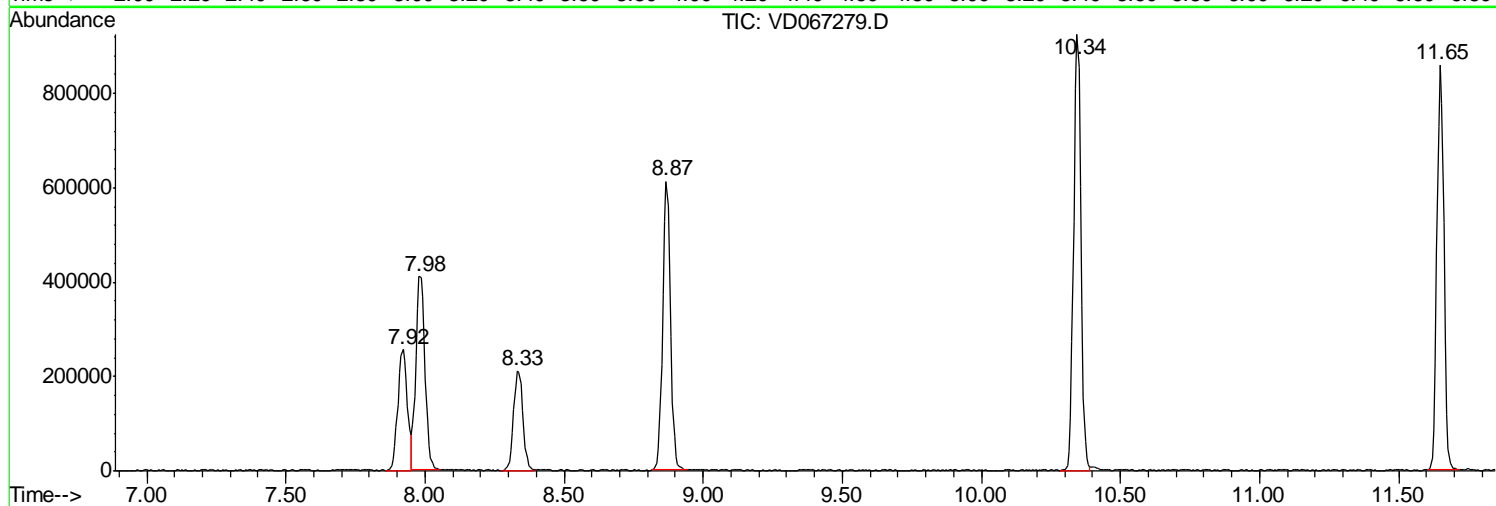
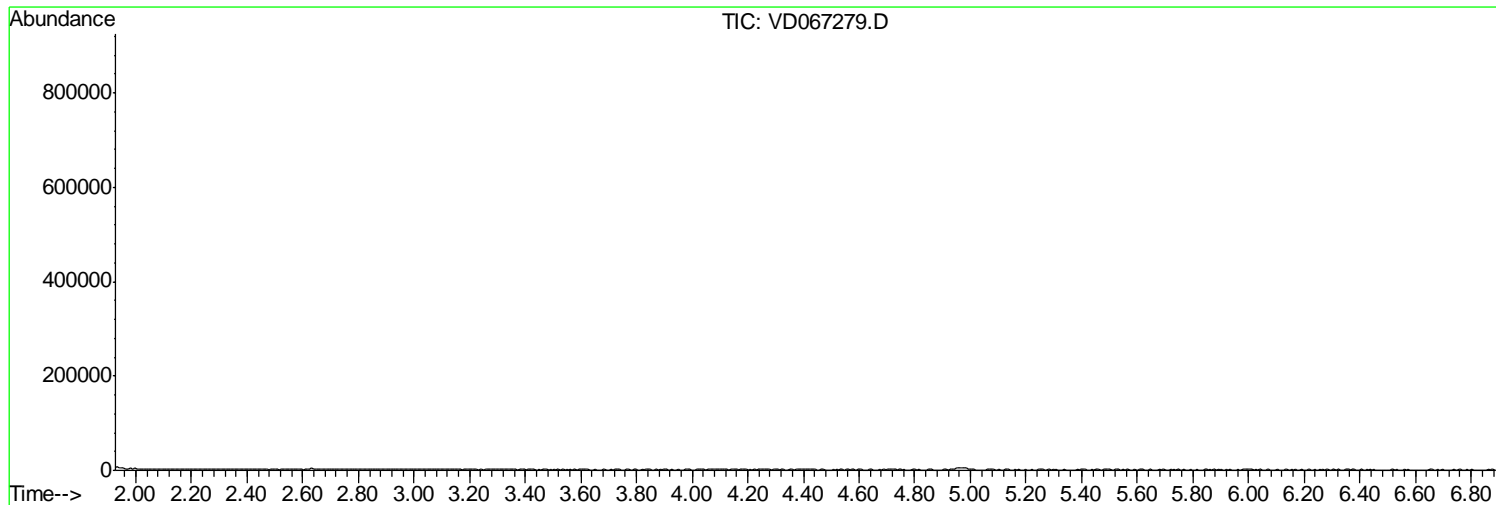
Sum of corrected areas: 8930489

Data Path : Z:\VOASRV\HPCHEM1\MSVOA D\DATA\VD101520\
Data File : VD067279.D
Acq On : 15 Oct 2020 13:16
Operator : VA/SY
Sample : L4223-01
Misc : 5.53G/5.00ml/MSVOA D/SOIL
ALS Vial : 7 Sample Multiplier: 1

Instrument :
MSVOA_D
ClientSampleId :
PL-01-101420

Quant Method : Z:\VOASRV\HPCHEM1\MSVOA_D\METHOD\82D101320S.M
Quant Title : SW846 8260

TIC Library : C:\DATABASE\NIST11.L
TIC Integration Parameters: LSCINT.P



Data Path : Z:\VOASRV\HPCHEM1\MSVOA_D\DATA\VD101520\
Data File : VD067279.D
Acq On : 15 Oct 2020 13:16
Operator : VA/SY
Sample : L4223-01
Misc : 5.53G/5.00ml/MSVOA_D/SOIL
ALS Vial : 7 Sample Multiplier: 1

Instrument :
MSVOA_D
ClientSampleId :
PL-01-101420

Quant Method : Z:\VOASRV\HPCHEM1\MSVOA_D\METHOD\82D101320S.M
Quant Title : SW846 8260

TIC Library : C:\DATABASE\NIST11.L
TIC Integration Parameters: LSCINT.P

No Library Search Compounds Detected

Data Path : Z:\VOASRV\HPCHEM1\MSVOA_D\DATA\VD101520\
Data File : VD067279.D
Acq On : 15 Oct 2020 13:16
Operator : VA/SY
Sample : L4223-01
Misc : 5.53G/5.00ml/MSVOA_D/SOIL
ALS Vial : 7 Sample Multiplier: 1

Instrument :
MSVOA_D
ClientSampleId :
PL-01-101420

Quant Method : Z:\VOASRV\HPCHEM1\MSVOA_D\METHOD\82D101320S.M
Quant Title : SW846 8260

TIC Library : C:\DATABASE\NIST11.L
TIC Integration Parameters: LSCINT.P

TIC Top Hit name	RT	EstConc	Units	Response	--Internal Standard--			
					#	RT	Resp	Conc
