

Data Path : Z:\voasrv\HPCHEM1\MSVOA_D\Data\VD102021\
 Data File : VD070773.D
 Acq On : 20 Oct 2021 13:58
 Operator : VA/SY
 Sample : M4288-01
 Misc : 5.01G/5.00ml/MSVOA_D/SOIL
 ALS Vial : 9 Sample Multiplier: 1

Instrument :
 MSVOA_D
 ClientSampleId :
 SA-01-101921

Quant Time: Oct 21 05:37:57 2021
 Quant Method : Z:\voasrv\HPCHEM1\MSVOA_D\Method\82D101521S.M
 Quant Title : SW846 8260
 QLast Update : Mon Oct 18 08:32:03 2021
 Response via : Initial Calibration

Compound	R.T.	QIon	Response	Conc	Units	Dev(Min)
Internal Standards						
1) Pentafluorobenzene	7.979	168	5431	50.00	ug/l	0.00
34) 1,4-Difluorobenzene	8.861	114	8798	50.00	ug/l	0.00
63) Chlorobenzene-d5	11.638	117	8235	50.00	ug/l	# 0.00
72) 1,4-Dichlorobenzene-d4	13.567	152	2685	50.00	ug/l	0.00
System Monitoring Compounds						
33) 1,2-Dichloroethane-d4	8.326	65	4255	66.15	ug/l	0.00
Spiked Amount	50.000	Range	50 - 163	Recovery	=	132.30%
35) Dibromofluoromethane	7.903	113	2743	48.69	ug/l	0.00
Spiked Amount	50.000	Range	54 - 147	Recovery	=	97.38%
50) Toluene-d8	10.332	98	10076	46.66	ug/l	0.00
Spiked Amount	50.000	Range	49 - 140	Recovery	=	93.32%
62) 4-Bromofluorobenzene	12.626	95	2938	39.51	ug/l	0.00
Spiked Amount	50.000	Range	25 - 144	Recovery	=	79.02%

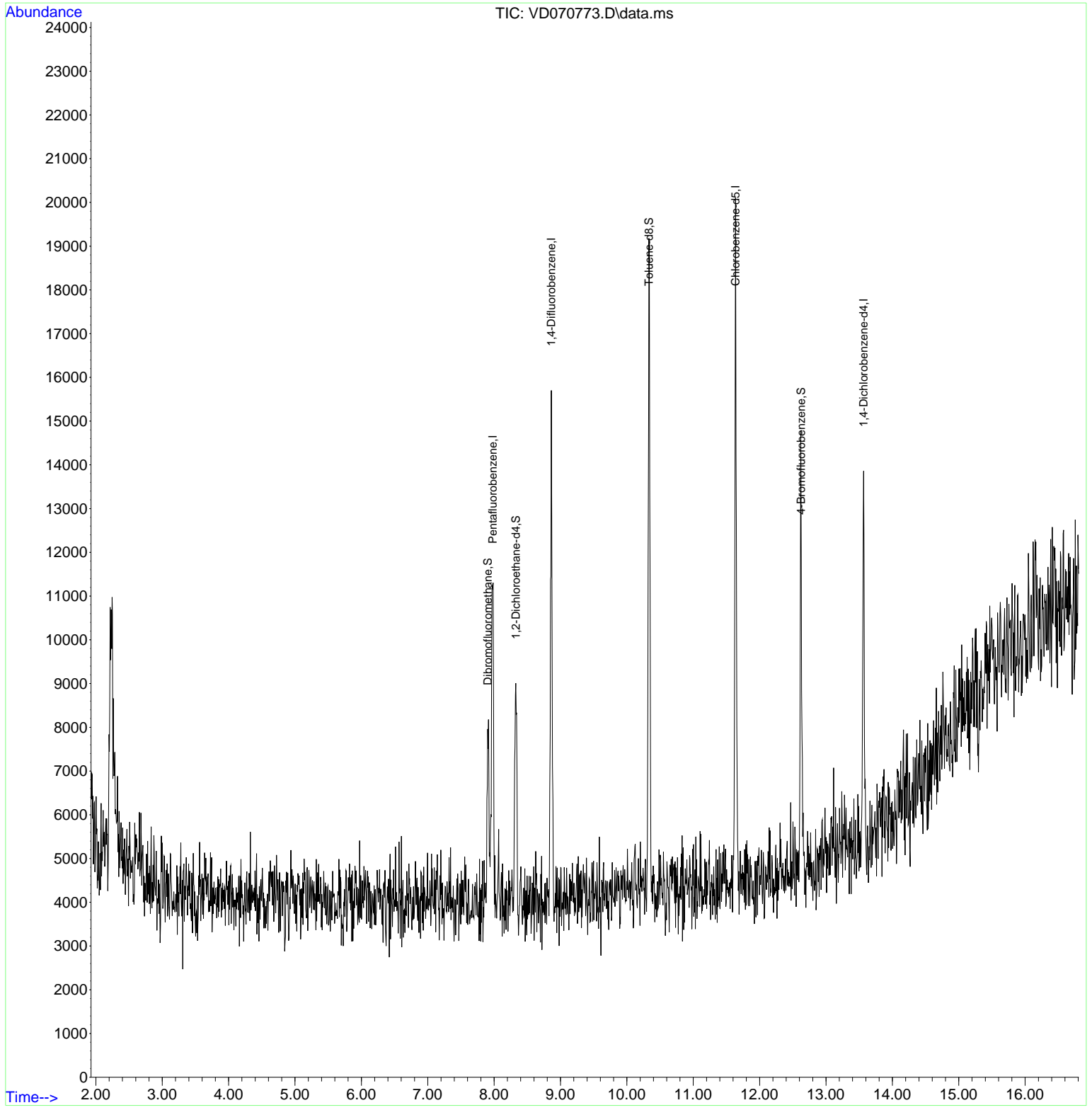
Target Compounds Qvalue

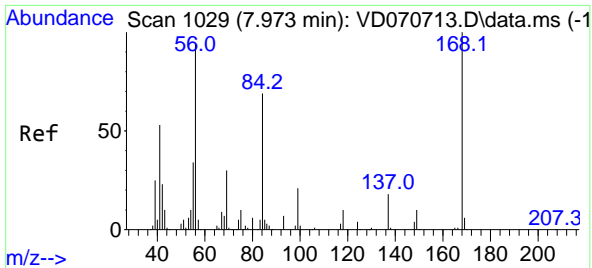
(#) = qualifier out of range (m) = manual integration (+) = signals summed

Data Path : Z:\voasrv\HPCHEM1\MSVOA_D\Data\VD102021\
 Data File : VD070773.D
 Acq On : 20 Oct 2021 13:58
 Operator : VA/SY
 Sample : M4288-01
 Misc : 5.01G/5.00ml/MSVOA_D/SOIL
 ALS Vial : 9 Sample Multiplier: 1

Instrument :
 MSVOA_D
ClientSampleId :
 SA-01-101921

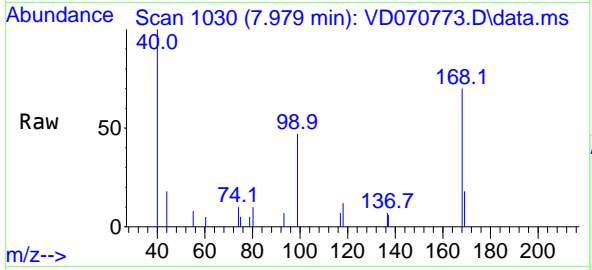
Quant Time: Oct 21 05:37:57 2021
 Quant Method : Z:\voasrv\HPCHEM1\MSVOA_D\Method\82D101521S.M
 Quant Title : SW846 8260
 QLast Update : Mon Oct 18 08:32:03 2021
 Response via : Initial Calibration



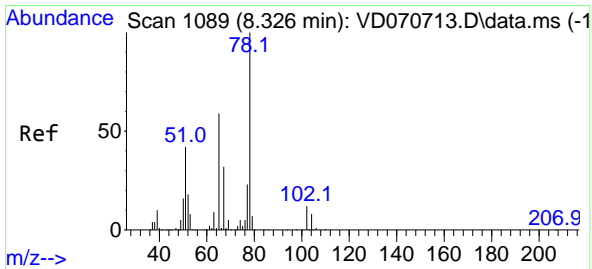
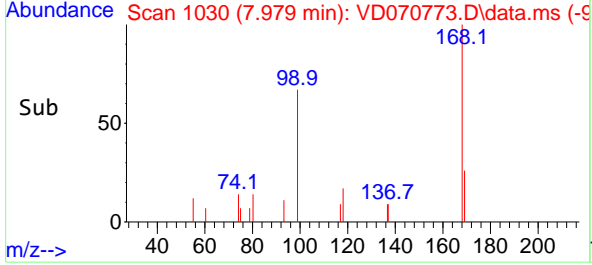
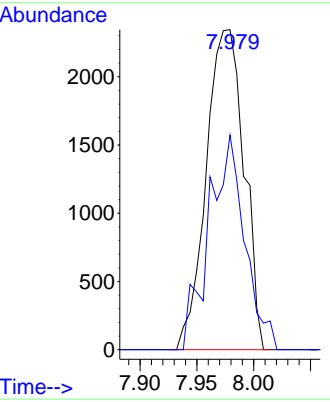


#1
 Pentafluorobenzene
 Concen: 50.00 ug/l
 RT: 7.979 min Scan# 1030
 Delta R.T. 0.006 min
 Lab File: VD070773.D
 Acq: 20 Oct 2021 13:58

Instrument :
 MSVOA_D
ClientSampled :
 SA-01-101921

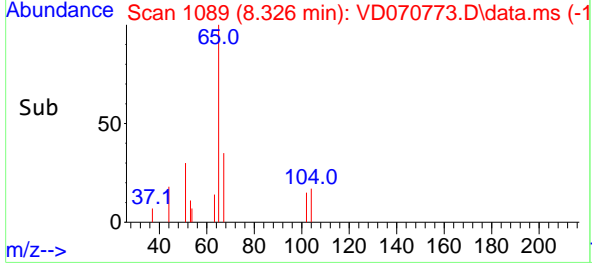
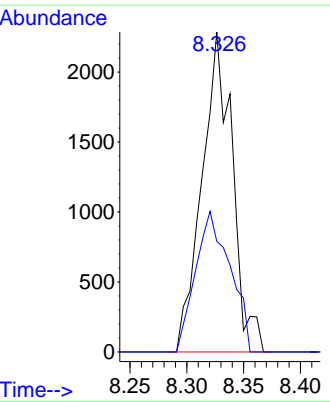
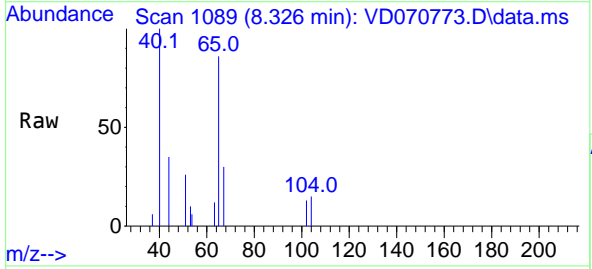


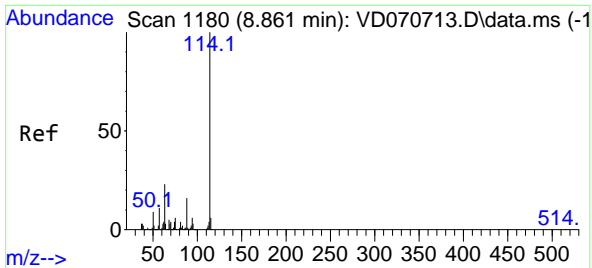
Tgt Ion:168 Resp: 5431
 Ion Ratio Lower Upper
 168 100
 99 67.0 51.4 77.0



#33
 1,2-Dichloroethane-d4
 Concen: 66.15 ug/l
 RT: 8.326 min Scan# 1089
 Delta R.T. 0.000 min
 Lab File: VD070773.D
 Acq: 20 Oct 2021 13:58

Tgt Ion: 65 Resp: 4255
 Ion Ratio Lower Upper
 65 100
 67 50.0 0.0 110.2

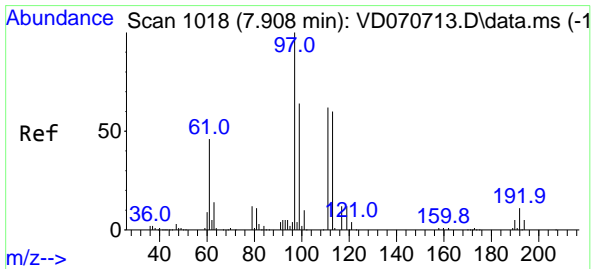
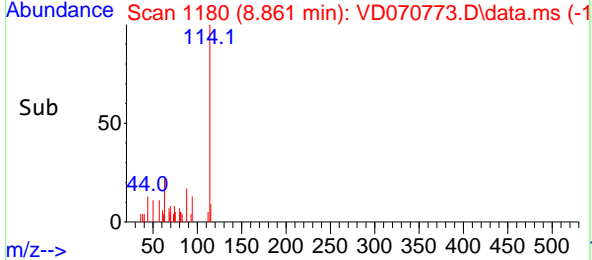
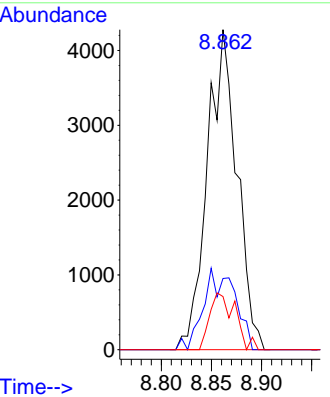
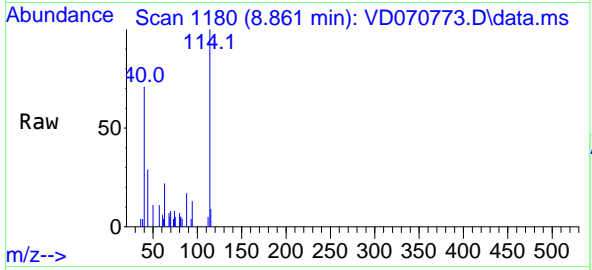




#34
 1,4-Difluorobenzene
 Concen: 50.00 ug/l
 RT: 8.861 min Scan# 1180
 Delta R.T. 0.000 min
 Lab File: VD070773.D
 Acq: 20 Oct 2021 13:58

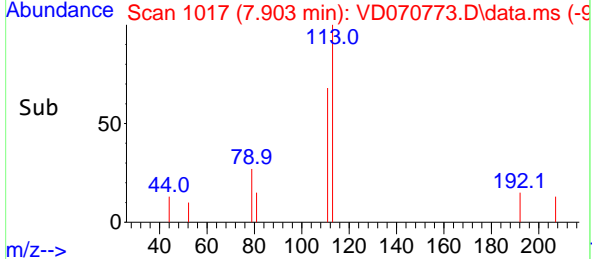
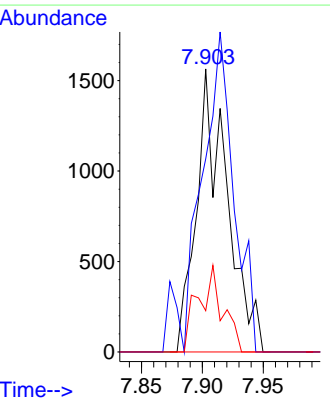
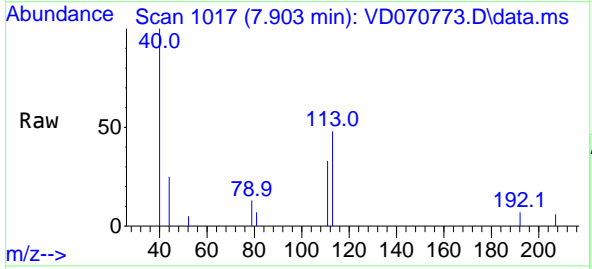
Instrument :
 MSVOA_D
 ClientSampled :
 SA-01-101921

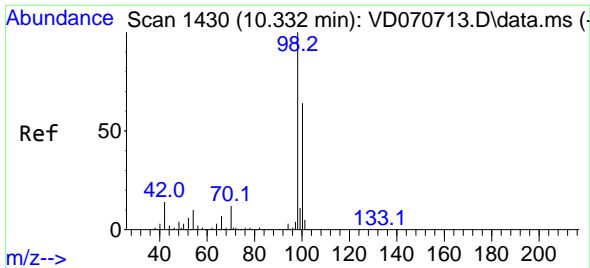
Tgt Ion	Resp	Lower	Upper
114	100		
63	22.3	0.0	41.8
88	16.6	0.0	32.6



#35
 Dibromofluoromethane
 Concen: 48.69 ug/l
 RT: 7.903 min Scan# 1017
 Delta R.T. -0.006 min
 Lab File: VD070773.D
 Acq: 20 Oct 2021 13:58

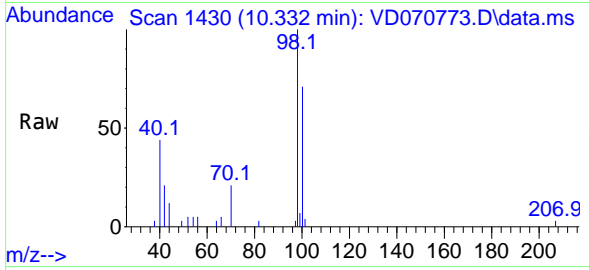
Tgt Ion	Resp	Lower	Upper
113	100		
111	122.8	83.1	124.7
192	24.3	12.7	19.1#



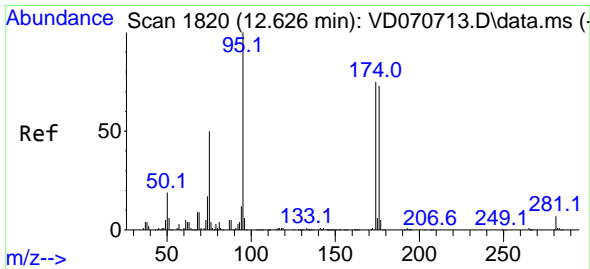
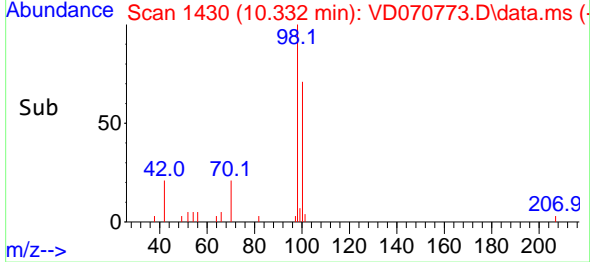
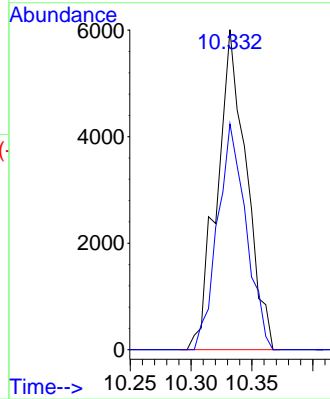


#50
 Toluene-d8
 Concen: 46.66 ug/l
 RT: 10.332 min Scan# 1430
 Delta R.T. 0.000 min
 Lab File: VD070773.D
 Acq: 20 Oct 2021 13:58

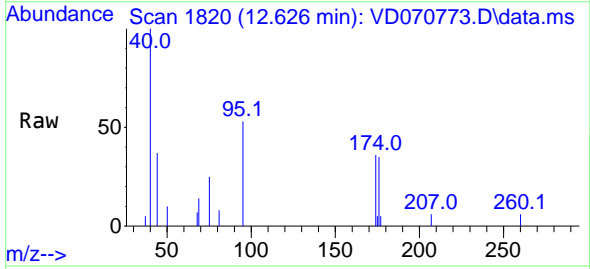
Instrument :
 MSVOA_D
 ClientSampleId :
 SA-01-101921



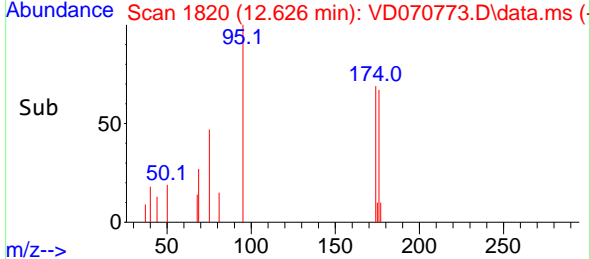
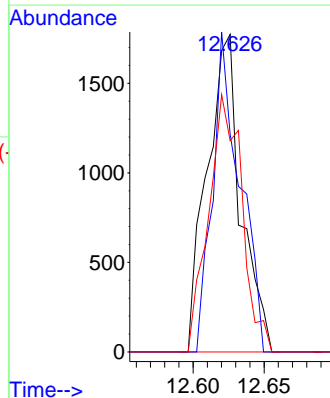
Tgt Ion: 98 Resp: 10076
 Ion Ratio Lower Upper
 98 100
 100 68.7 52.2 78.4

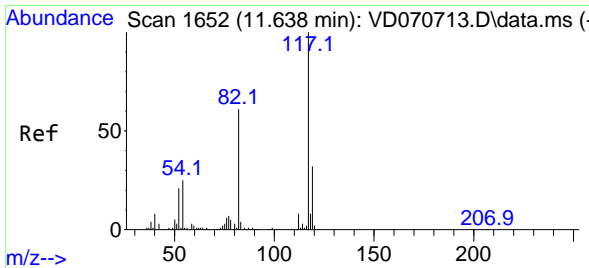


#62
 4-Bromofluorobenzene
 Concen: 39.51 ug/l
 RT: 12.626 min Scan# 1820
 Delta R.T. 0.000 min
 Lab File: VD070773.D
 Acq: 20 Oct 2021 13:58



Tgt Ion: 95 Resp: 2938
 Ion Ratio Lower Upper
 95 100
 174 81.0 0.0 138.0
 176 79.7 0.0 135.6



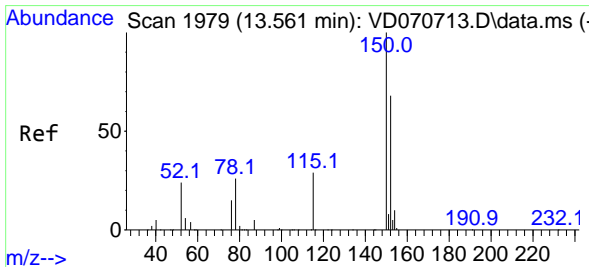
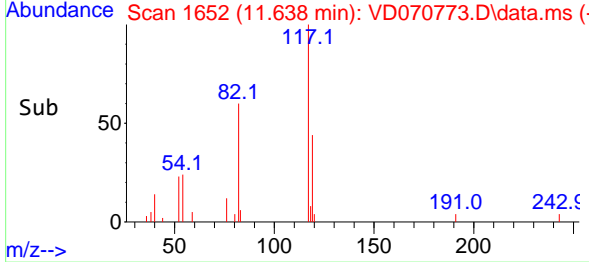
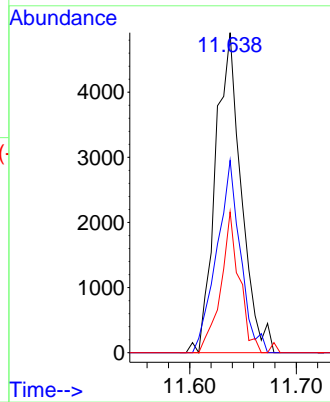
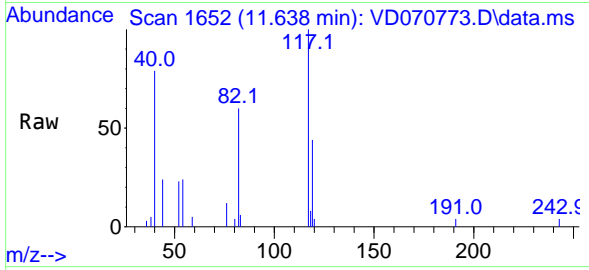


#63
 Chlorobenzene-d5
 Concen: 50.00 ug/l
 RT: 11.638 min Scan# 1652
 Delta R.T. 0.000 min
 Lab File: VD070773.D
 Acq: 20 Oct 2021 13:58

Instrument :
 MSVOA_D
 ClientSampleId :
 SA-01-101921

Tgt Ion:117 Resp: 8235

Ion	Ratio	Lower	Upper
117	100		
82	60.1	45.4	68.2
119	44.0	24.7	37.1#



#72
 1,4-Dichlorobenzene-d4
 Concen: 50.00 ug/l
 RT: 13.567 min Scan# 1980
 Delta R.T. 0.006 min
 Lab File: VD070773.D
 Acq: 20 Oct 2021 13:58

Tgt Ion:152 Resp: 2685

Ion	Ratio	Lower	Upper
152	100		
115	72.3	31.9	95.7
150	135.8	0.0	350.0

