

Data Path : Z:\VOASRV\HPCHEM1\MSVOA D\DATA\VD102120\
 Data File : VD067347.D
 Acq On : 21 Oct 2020 14:59
 Operator : VA/SY
 Sample : L4436-09RE
 Misc : 10.70G/5.00ml/MSVOA D/SOIL
 ALS Vial : 12 Sample Multiplier: 1

Instrument :
 MSVOA_D
 ClientSampleId :
 36B

Quant Time: Oct 22 00:20:35 2020
 Quant Method : Z:\VOASRV\HPCHEM1\MSVOA_D\METHOD\82D101320S.M
 Quant Title : SW846 8260
 QLast Update : Mon Oct 19 19:13:29 2020
 Response via : Initial Calibration

Internal Standards	R.T.	QIon	Response	Conc	Units	Dev(Min)
1) Pentafluorobenzene	7.98	168	345236	50.00	ug/l	0.00
34) 1,4-Difluorobenzene	8.87	114	572685	50.00	ug/l	0.00
63) Chlorobenzene-d5	11.65	117	552608	50.00	ug/l	0.00
72) 1,4-Dichlorobenzene-d4	13.58	152	263736	50.00	ug/l	0.00

System Monitoring Compounds

33) 1,2-Dichloroethane-d4	8.34	65	177837	51.42	ug/l	0.00
Spiked Amount				50.000		
Recovery						102.84%
35) Dibromofluoromethane	7.92	113	182134	47.79	ug/l	0.00
Spiked Amount				50.000		
Recovery						95.58%
50) Toluene-d8	10.34	98	672974	48.79	ug/l	0.00
Spiked Amount				50.000		
Recovery						97.58%
62) 4-Bromofluorobenzene	12.64	95	233493	48.69	ug/l	0.00
Spiked Amount				50.000		
Recovery						97.38%

Target Compounds

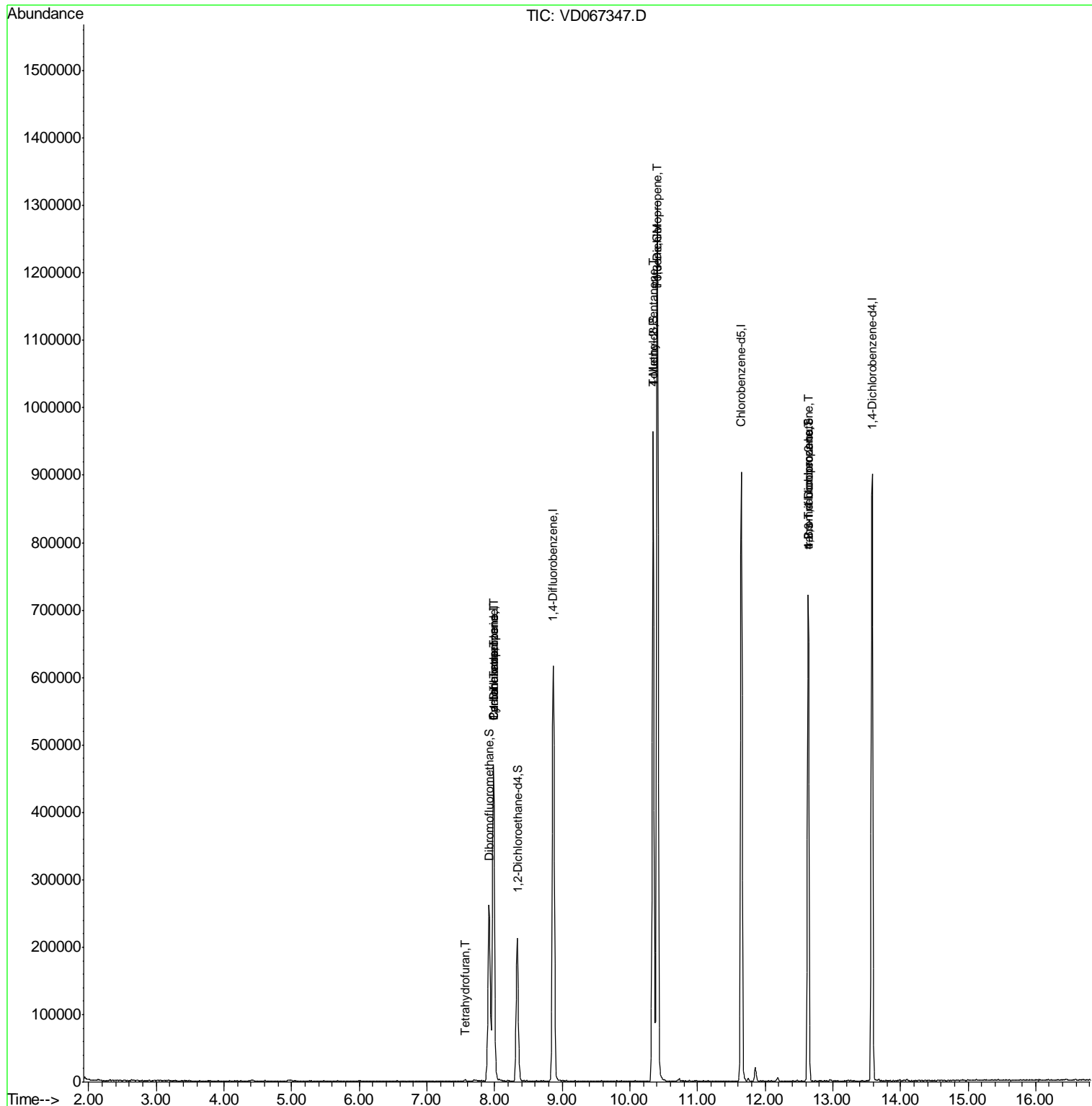
Target Compounds	R.T.	QIon	Response	Conc	Units	Qvalue
2) Dichlorodifluoromethane	1.99	85	218	Below Cal	#	44
5) Bromomethane	2.78	94	87	Below Cal	#	73
20) Methylene Chloride	4.96	84	1377	Below Cal	#	31
29) Tetrahydrofuran	7.57	42	1462	4.763	ug/l #	70
31) Cyclohexane	7.98	56	6325	1.588	ug/l #	3
36) 1,1-Dichloropropene	7.98	75	24794	5.108	ug/l #	47
38) Carbon Tetrachloride	7.98	117	36545	5.891	ug/l #	17
51) 4-Methyl-2-Pentanone	10.34	43	2377	1.682	ug/l #	1
52) Toluene	10.41	92	594478	65.546	ug/l	97
53) t-1,3-Dichloropropene	10.41	75	7718	1.705	ug/l #	1
76) 1,2,3-Trichloropropane	12.64	75	116605	63.790	ug/l #	100
81) trans-1,4-Dichloro-2-buten	12.64	75	116605	144.658	ug/l #	10

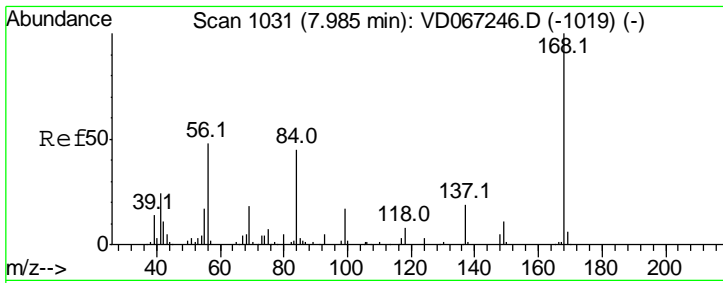
(#) = qualifier out of range (m) = manual integration (+) = signals summed

Data Path : Z:\VOASRV\HPCHEM1\MSVOA D\DATA\VD102120\
 Data File : VD067347.D
 Acq On : 21 Oct 2020 14:59
 Operator : VA/SY
 Sample : L4436-09RE
 Misc : 10.70G/5.00ml/MSVOA D/SOIL
 ALS Vial : 12 Sample Multiplier: 1

Instrument :
 MSVOA_D
 Client Sampled :
 36B

Quant Time: Oct 22 00:20:35 2020
 Quant Method : Z:\VOASRV\HPCHEM1\MSVOA_D\METHOD\82D101320S.M
 Quant Title : SW846 8260
 QLast Update : Mon Oct 19 19:13:29 2020
 Response via : Initial Calibration

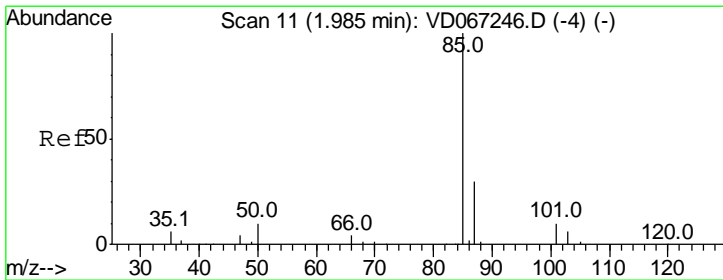
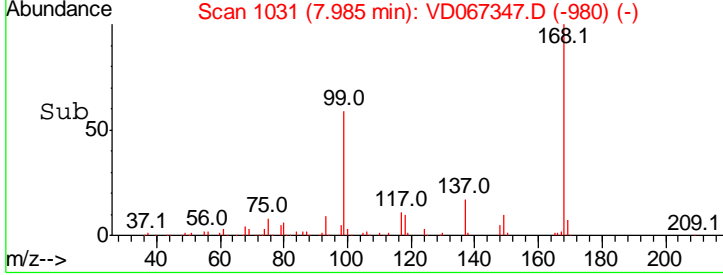
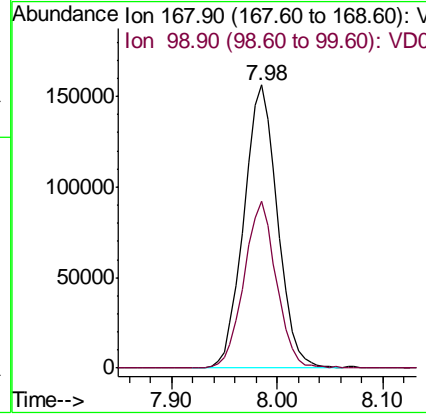
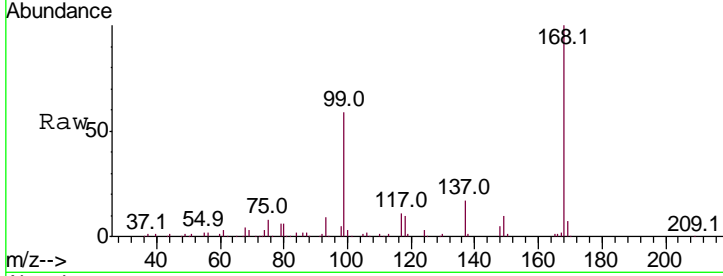




#1
 Pentafluorobenzene
 Concen: 50.000 ug/l
 RT: 7.98 min Scan# 1031
 Delta R.T. 0.00 min
 Lab File: VD067347.D
 Acq: 21 Oct 2020 14:59

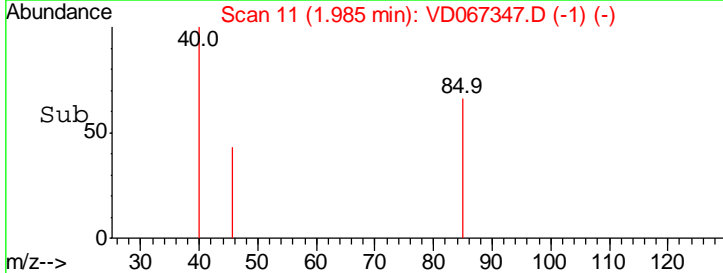
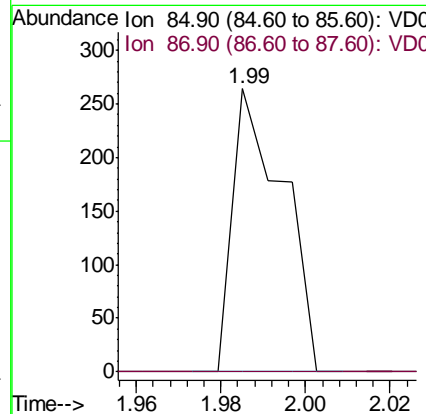
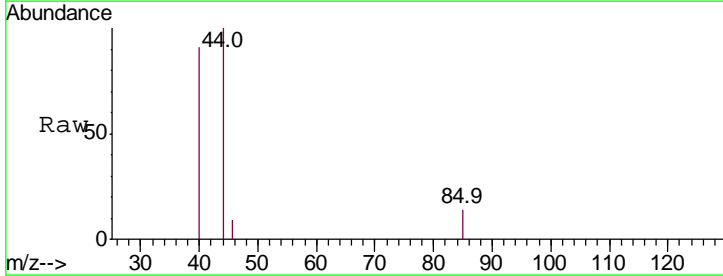
Instrument : MSVOA_D
 ClientSampled : 36B

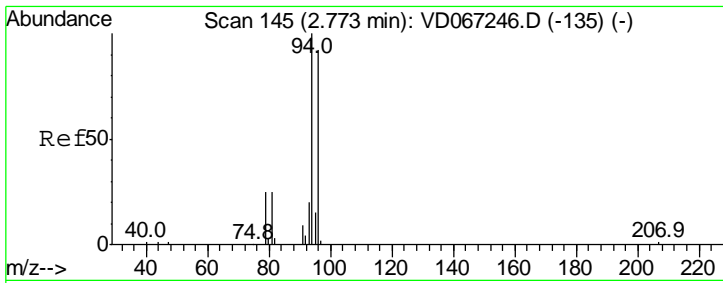
Tgt Ion	Resp	Lower	Upper
168	100		
99	59.1	45.9	68.9



#2
 Dichlorodifluoromethane
 Concen: Below Cal
 RT: 1.99 min Scan# 11
 Delta R.T. 0.00 min
 Lab File: VD067347.D
 Acq: 21 Oct 2020 14:59

Tgt Ion	Resp	Lower	Upper
85	100		
87	0.0	15.2	45.6#

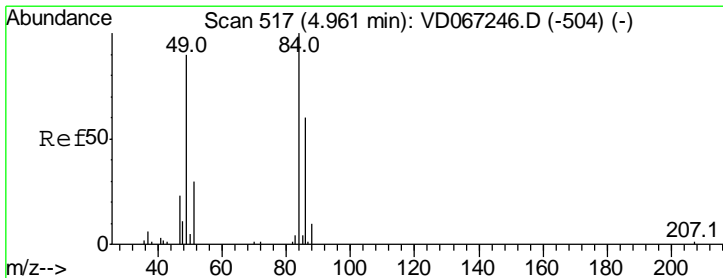
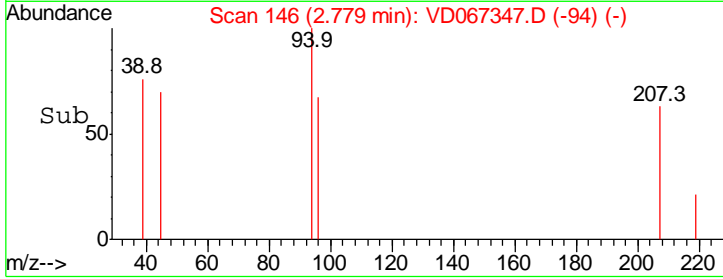
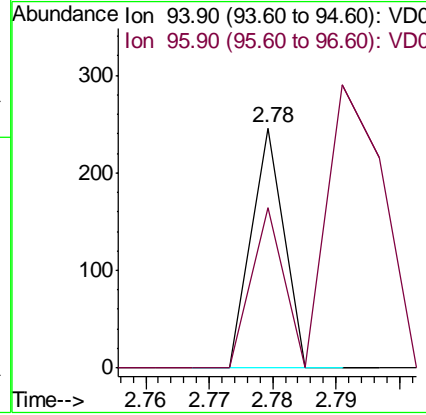
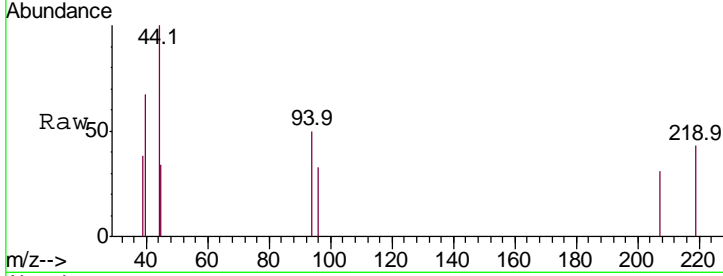




#5
 Bromomethane
 Concen: Below Cal
 RT: 2.78 min Scan# 146
 Delta R.T. 0.01 min
 Lab File: VD067347.D
 Acq: 21 Oct 2020 14:59

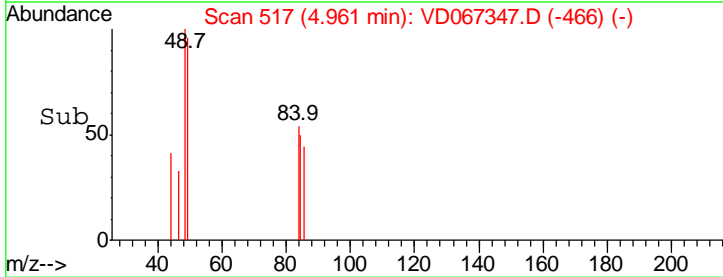
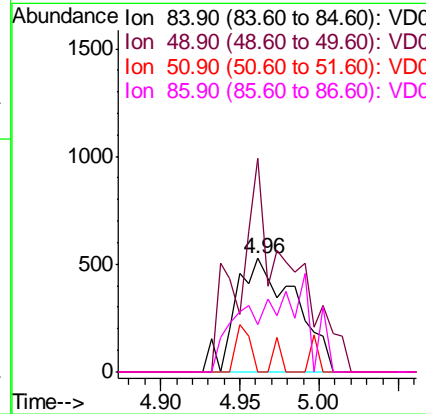
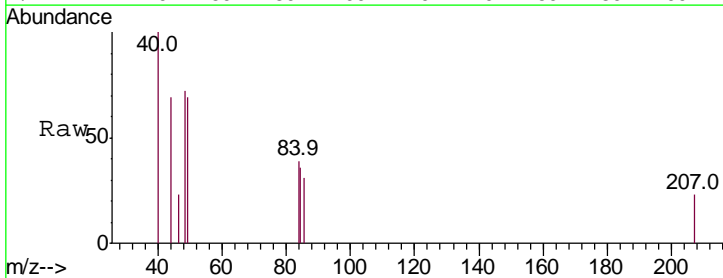
Instrument :
 MSVOA_D
 ClientSampled :
 36B

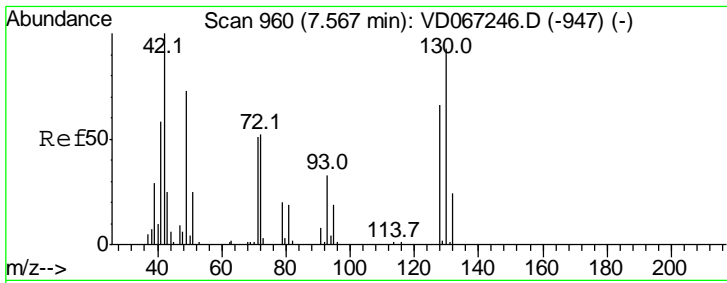
Tgt Ion: 94 Resp: 87
 Ion Ratio Lower Upper
 94 100
 96 66.7 73.8 110.6#



#20
 Methylene Chloride
 Concen: Below Cal
 RT: 4.96 min Scan# 517
 Delta R.T. 0.00 min
 Lab File: VD067347.D
 Acq: 21 Oct 2020 14:59

Tgt Ion: 84 Resp: 1377
 Ion Ratio Lower Upper
 84 100
 49 188.4 72.2 108.2#
 51 0.0 23.8 35.8#
 86 42.0 48.2 72.4#

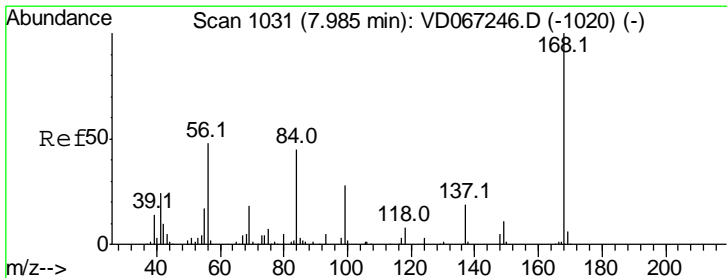
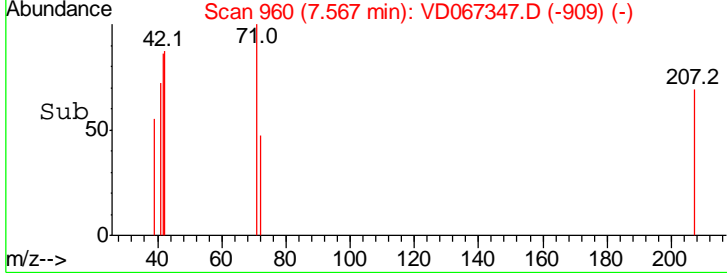
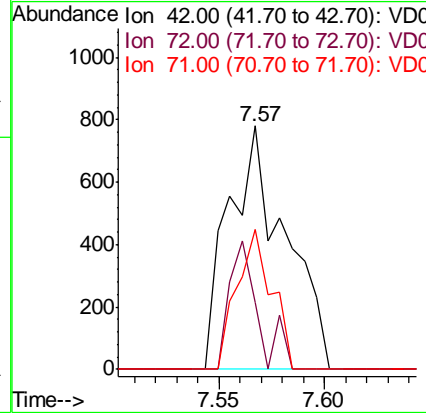
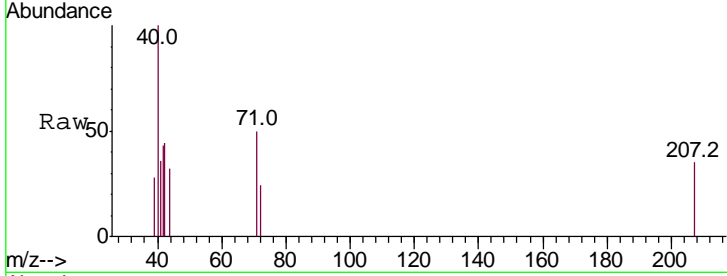




#29
 Tetrahydrofuran
 Concen: 4.763 ug/l
 RT: 7.57 min Scan# 960
 Delta R.T. 0.00 min
 Lab File: VD067347.D
 Acq: 21 Oct 2020 14:59

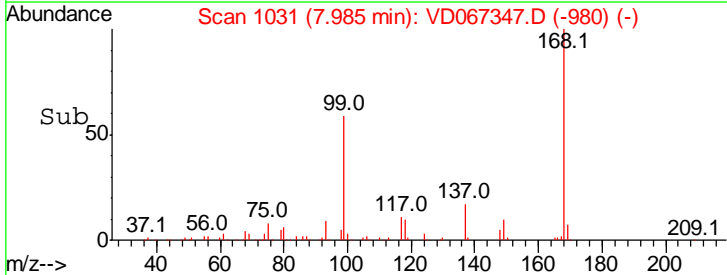
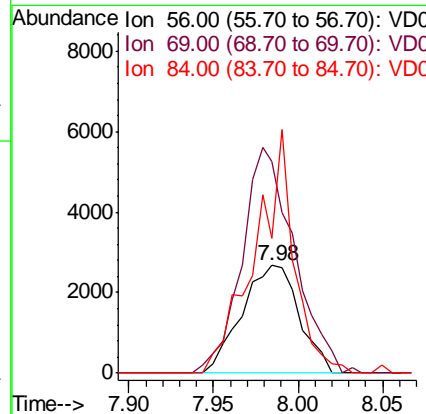
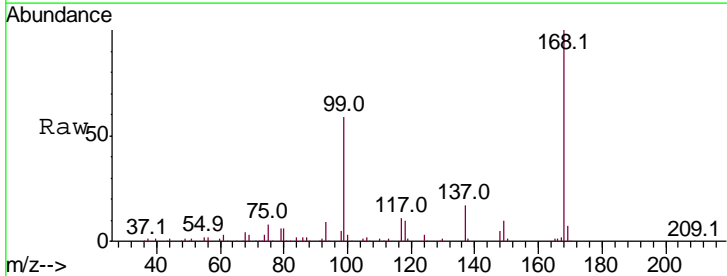
Instrument :
 MSVOA_D
 ClientSampled :
 36B

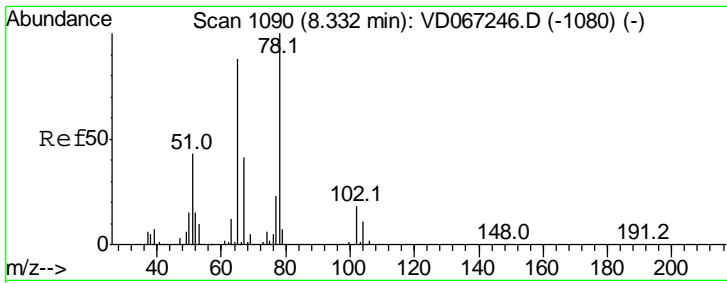
Tgt Ion	Resp	Lower	Upper
42	100		
72	26.1	43.2	64.8#
71	35.2	39.4	59.0#



#31
 Cyclohexane
 Concen: 1.588 ug/l
 RT: 7.98 min Scan# 1031
 Delta R.T. 0.00 min
 Lab File: VD067347.D
 Acq: 21 Oct 2020 14:59

Tgt Ion	Resp	Lower	Upper
56	100		
69	196.5	29.8	44.6#
84	125.4	76.6	114.8#

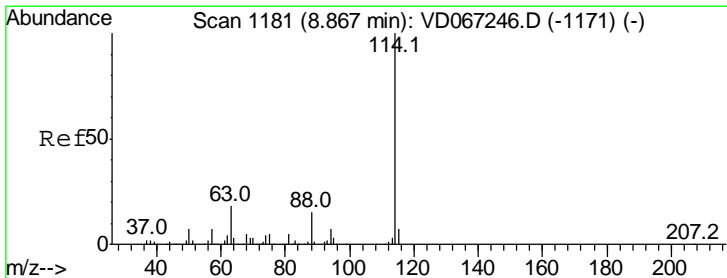
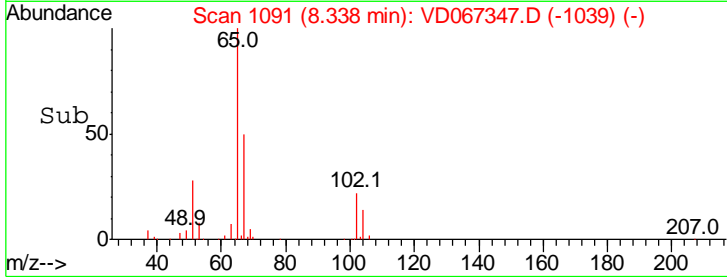
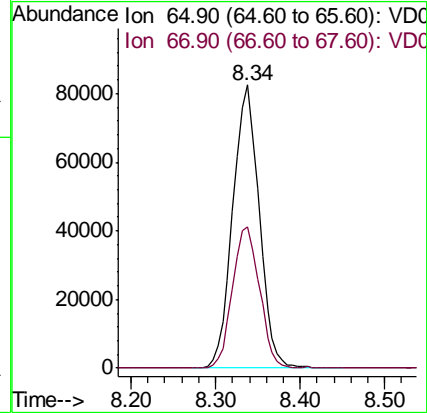
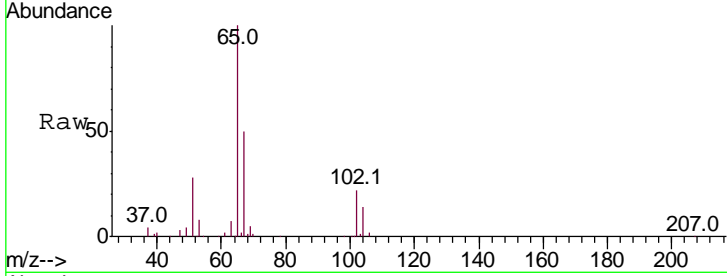




#33
 1,2-Dichloroethane-d4
 Concen: 51.417 ug/l
 RT: 8.34 min Scan# 1091
 Delta R.T. 0.01 min
 Lab File: VD067347.D
 Acq: 21 Oct 2020 14:59

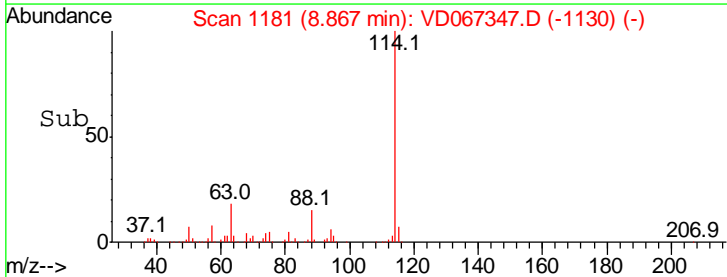
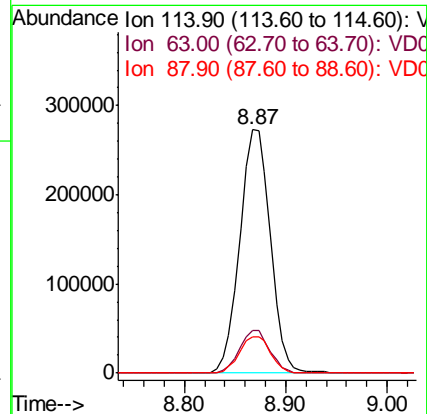
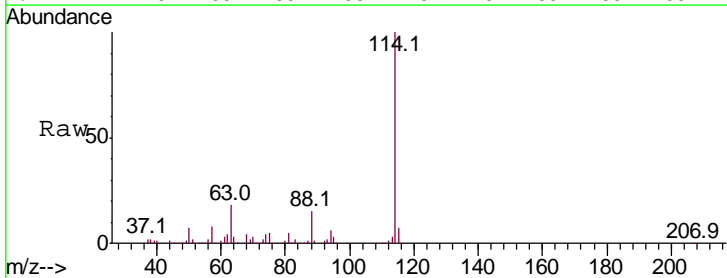
Instrument :
 MSVOA_D
 ClientSampled :
 36B

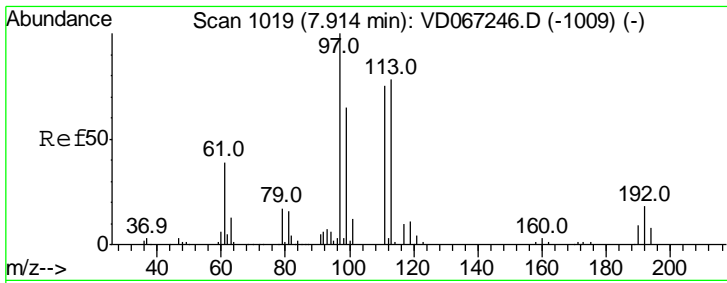
Tgt Ion	Resp	Lower	Upper
65	100		
67	50.9	0.0	103.8



#34
 1,4-Difluorobenzene
 Concen: 50.000 ug/l
 RT: 8.87 min Scan# 1181
 Delta R.T. 0.00 min
 Lab File: VD067347.D
 Acq: 21 Oct 2020 14:59

Tgt Ion	Resp	Lower	Upper
114	100		
63	17.6	0.0	35.0
88	15.2	0.0	30.6

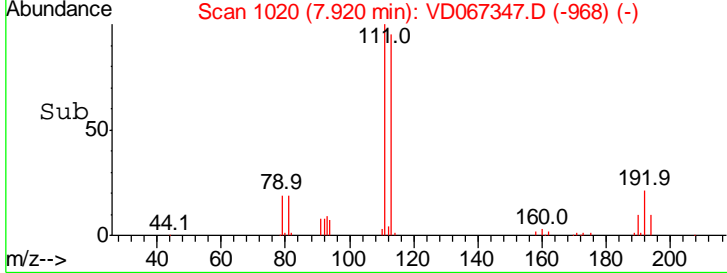
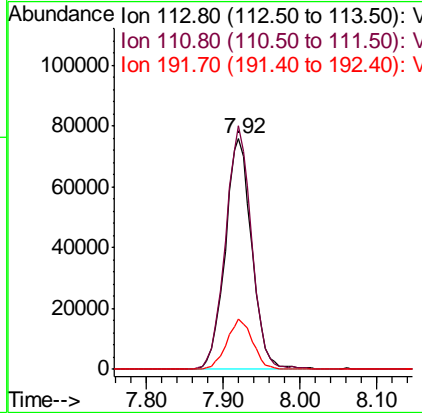
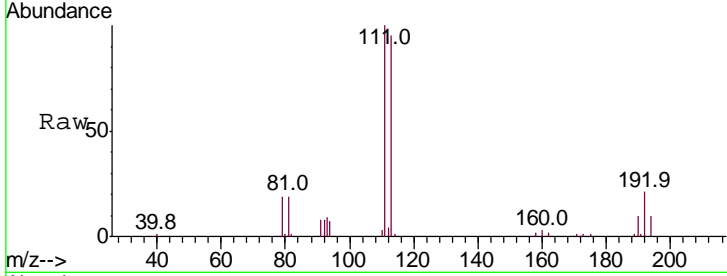




#35
 Dibromofluoromethane
 Concen: 47.789 ug/l
 RT: 7.92 min Scan# 1020
 Delta R.T. 0.01 min
 Lab File: VD067347.D
 Acq: 21 Oct 2020 14:59

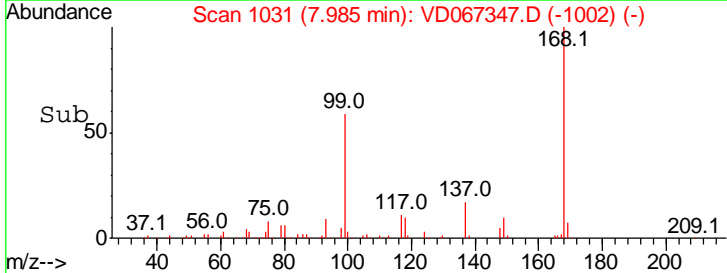
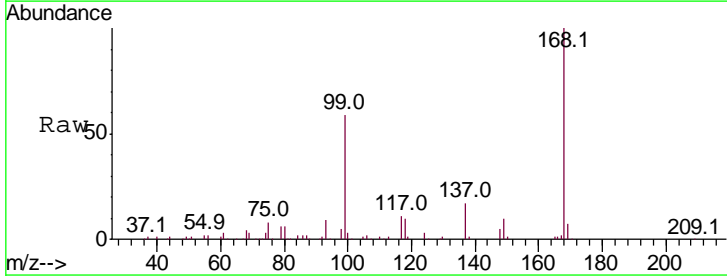
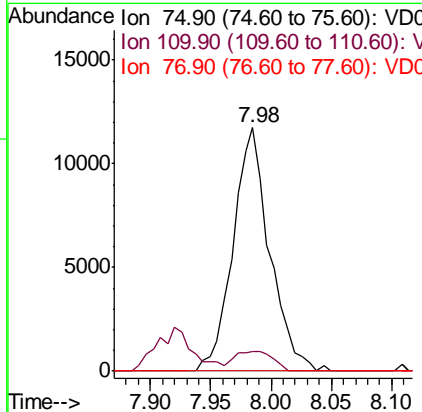
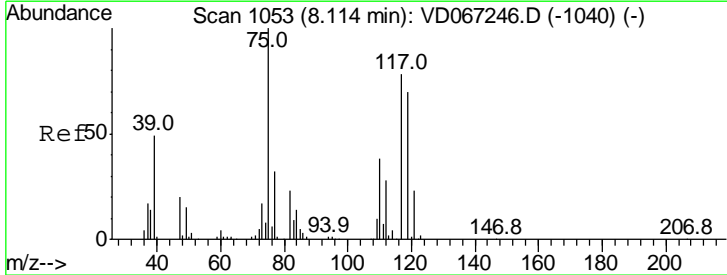
Instrument : MSVOA_D
 ClientSampled : 36B

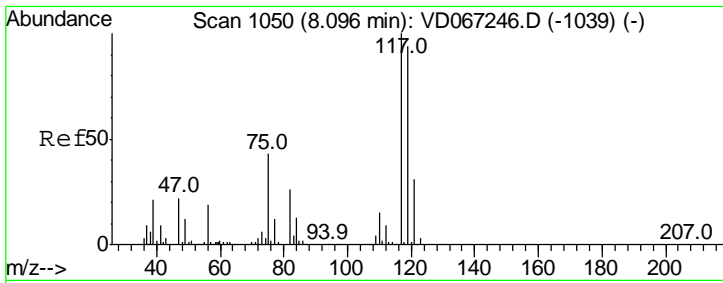
Tgt Ion	Resp	Lower	Upper
113	182134		
111	103.7	81.6	122.4
192	21.1	17.0	25.4



#36
 1,1-Dichloropropene
 Concen: 5.108 ug/l
 RT: 7.98 min Scan# 1031
 Delta R.T. -0.13 min
 Lab File: VD067347.D
 Acq: 21 Oct 2020 14:59

Tgt Ion	Resp	Lower	Upper
75	24794		
110	8.5	19.6	58.7#
77	0.0	24.6	37.0#

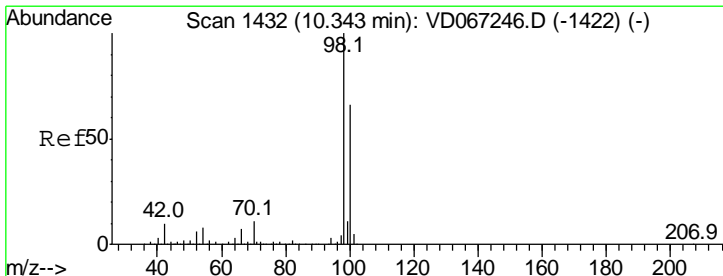
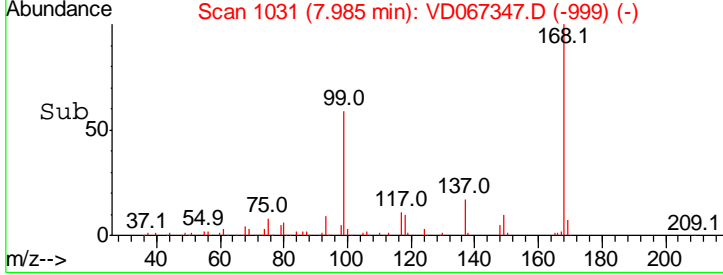
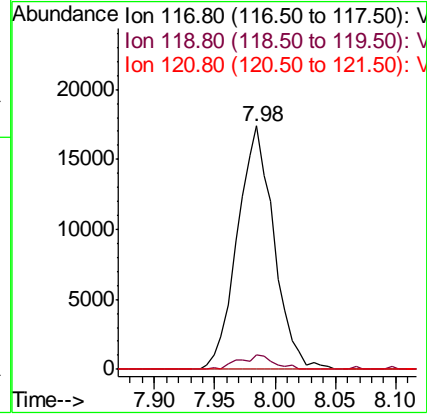
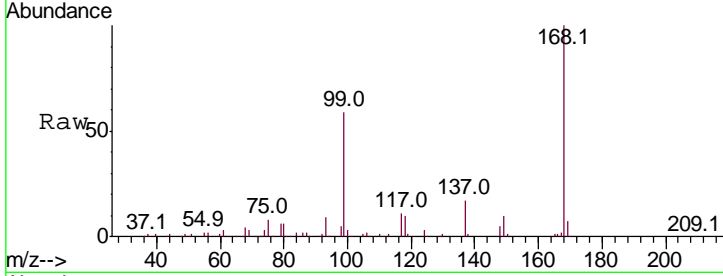




#38
 Carbon Tetrachloride
 Concen: 5.891 ug/l
 RT: 7.98 min Scan# 1031
 Delta R.T. -0.11 min
 Lab File: VD067347.D
 Acq: 21 Oct 2020 14:59

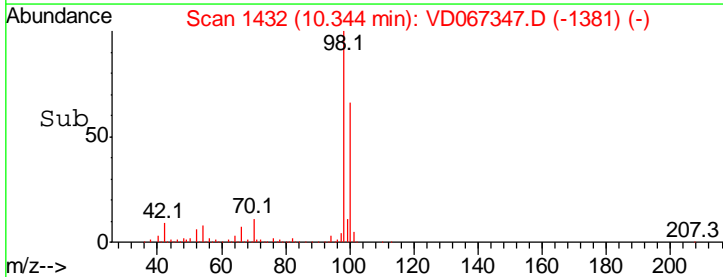
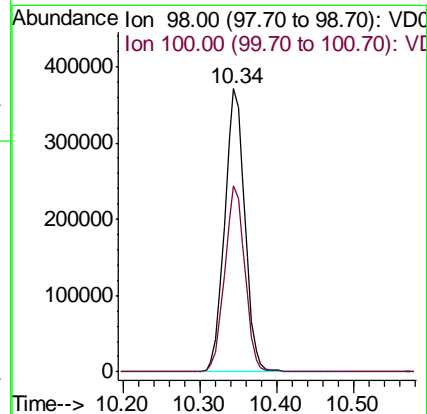
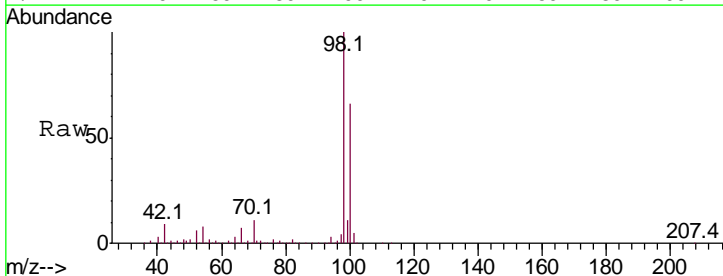
Instrument :
 MSVOA_D
 ClientSampled :
 36B

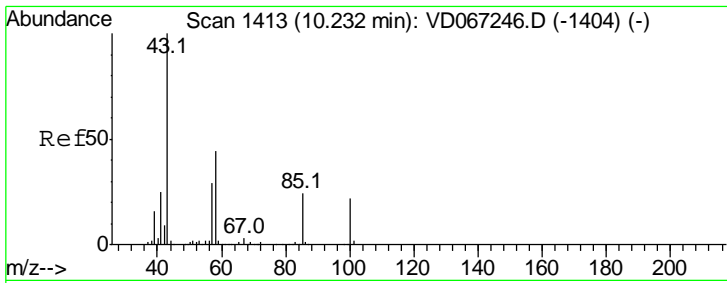
Tgt Ion	Resp	Lower	Upper
117	100		
119	5.7	75.0	112.4#
121	0.0	24.9	37.3#



#50
 Toluene-d8
 Concen: 48.793 ug/l
 RT: 10.34 min Scan# 1432
 Delta R.T. 0.00 min
 Lab File: VD067347.D
 Acq: 21 Oct 2020 14:59

Tgt Ion	Resp	Lower	Upper
98	100		
100	65.8	53.1	79.7

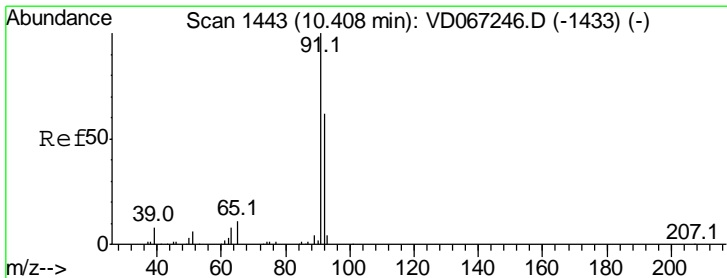
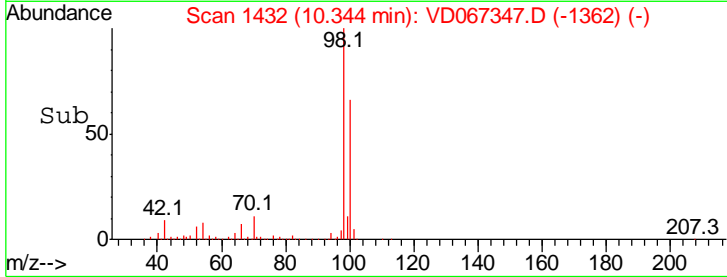
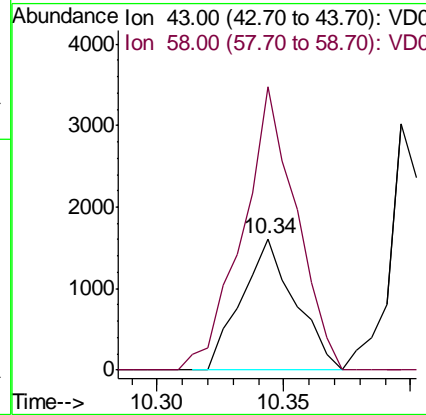
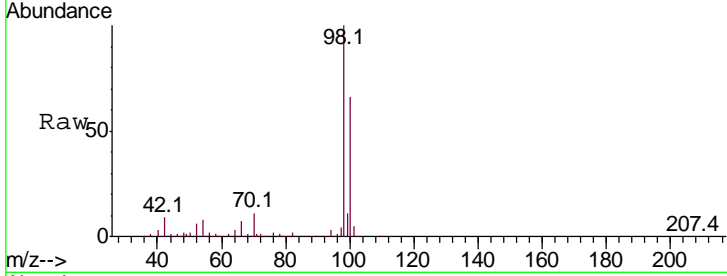




#51
 4-Methyl-2-Pentanone
 Concen: 1.682 ug/l
 RT: 10.34 min Scan# 1432
 Delta R.T. 0.11 min
 Lab File: VD067347.D
 Acq: 21 Oct 2020 14:59

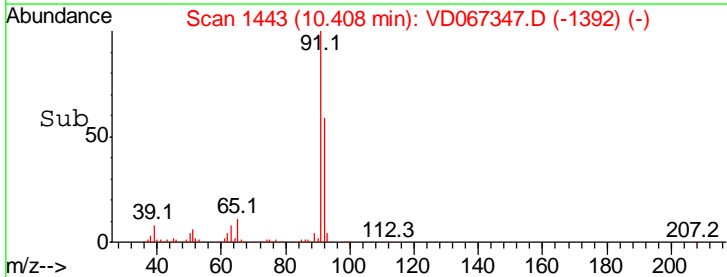
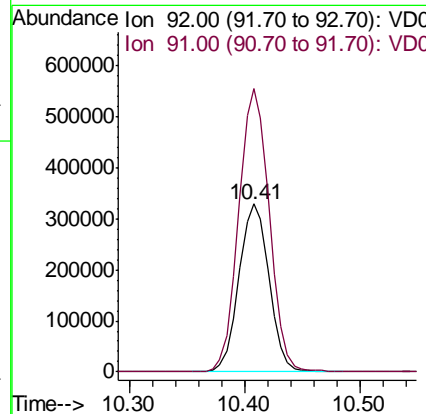
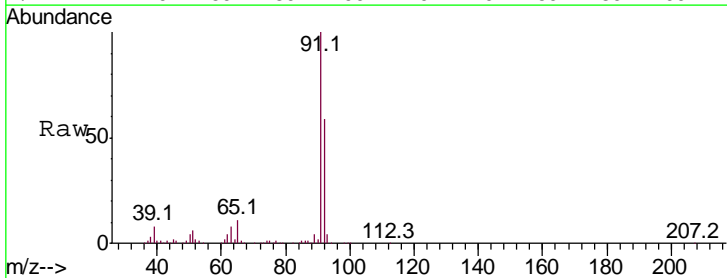
Instrument :
 MSVOA_D
 ClientSampled :
 36B

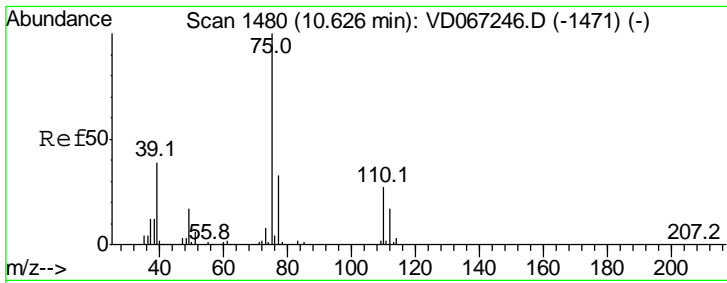
Tgt Ion: 43 Resp: 2377
 Ion Ratio Lower Upper
 43 100
 58 216.3 35.7 53.5#



#52
 Toluene
 Concen: 65.546 ug/l
 RT: 10.41 min Scan# 1443
 Delta R.T. 0.00 min
 Lab File: VD067347.D
 Acq: 21 Oct 2020 14:59

Tgt Ion: 92 Resp: 594478
 Ion Ratio Lower Upper
 92 100
 91 171.7 133.8 200.8

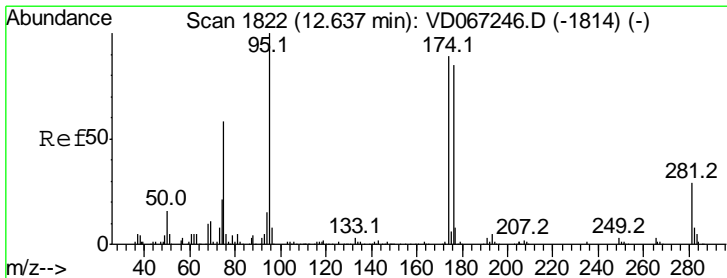
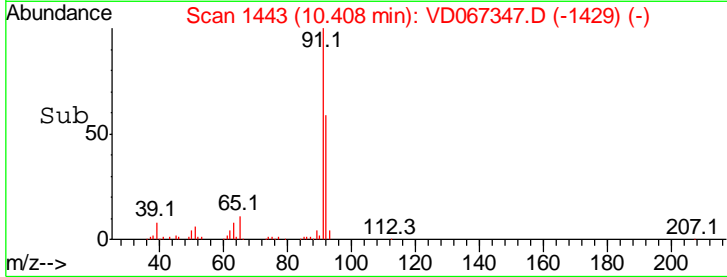
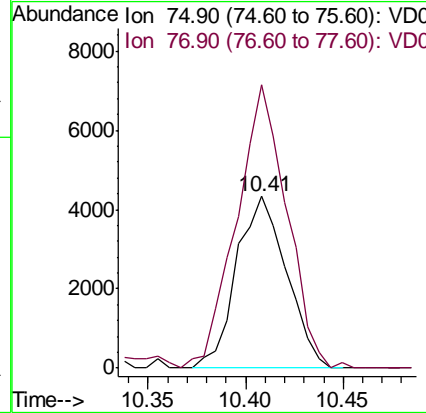
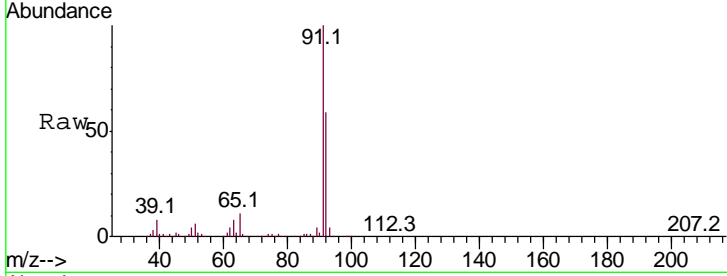




#53
 t-1,3-Dichloropropene
 Concen: 1.705 ug/l
 RT: 10.41 min Scan# 1443
 Delta R.T. -0.22 min
 Lab File: VD067347.D
 Acq: 21 Oct 2020 14:59

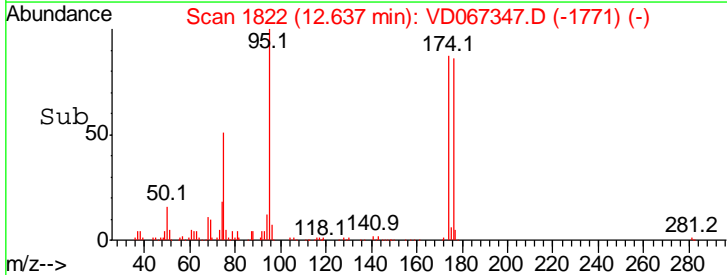
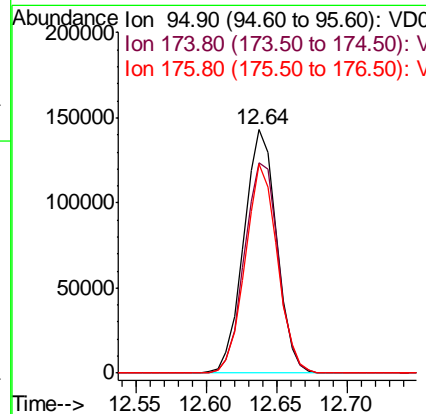
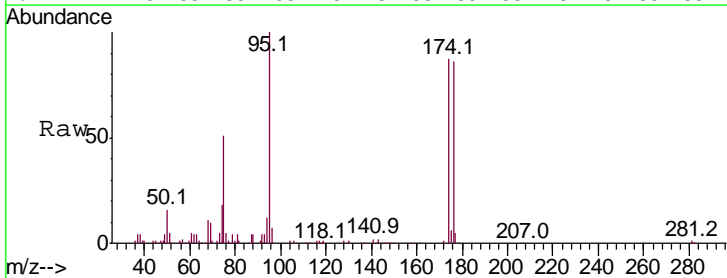
Instrument :
 MSVOA_D
 ClientSampled :
 36B

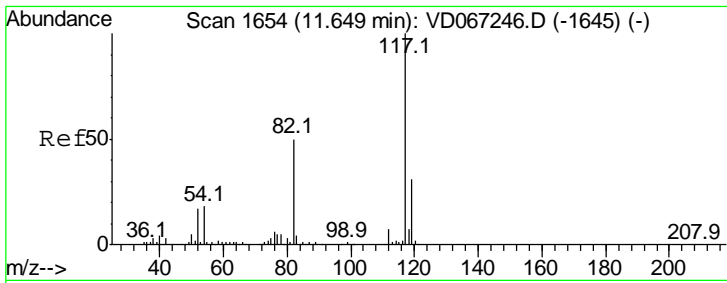
Tgt Ion: 75 Resp: 7718
 Ion Ratio Lower Upper
 75 100
 77 161.3 26.5 39.7#



#62
 4-Bromofluorobenzene
 Concen: 48.686 ug/l
 RT: 12.64 min Scan# 1822
 Delta R.T. 0.00 min
 Lab File: VD067347.D
 Acq: 21 Oct 2020 14:59

Tgt Ion: 95 Resp: 233493
 Ion Ratio Lower Upper
 95 100
 174 89.0 0.0 175.2
 176 84.0 0.0 168.6

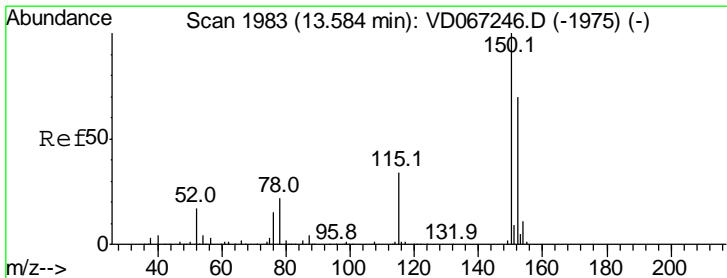
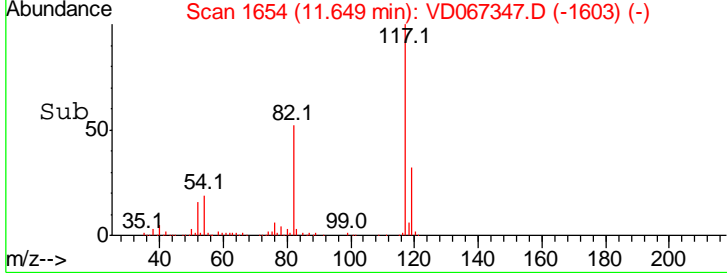
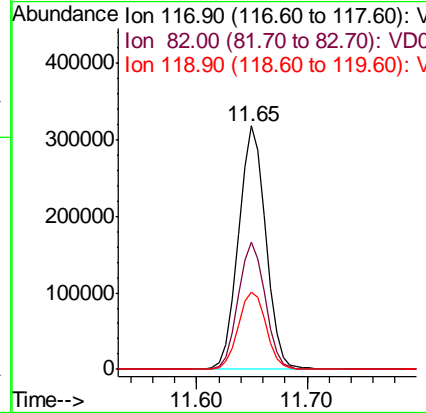
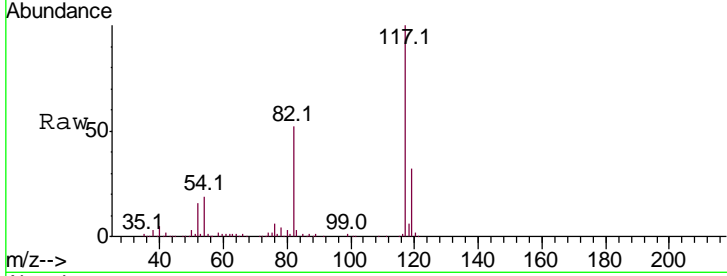




#63
 Chlorobenzene-d5
 Concen: 50.000 ug/l
 RT: 11.65 min Scan# 1654
 Delta R.T. 0.00 min
 Lab File: VD067347.D
 Acq: 21 Oct 2020 14:59

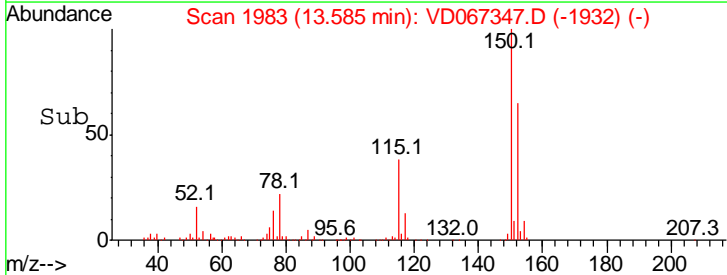
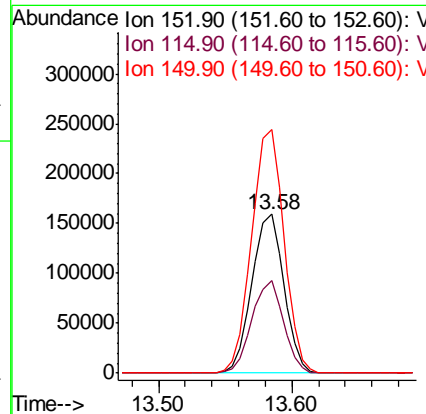
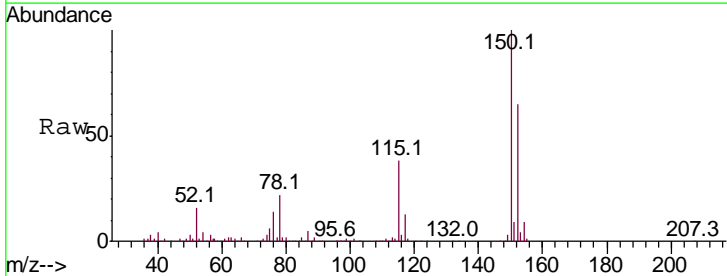
Instrument :
 MSVOA_D
 ClientSampled :
 36B

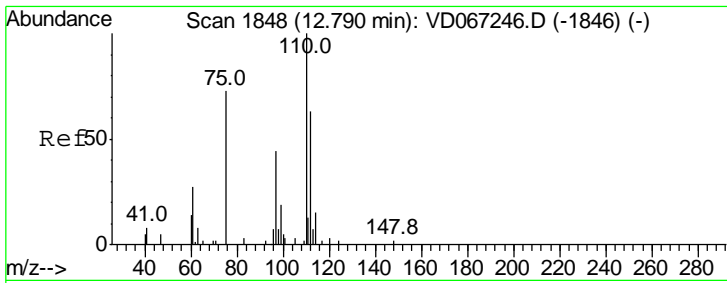
Tgt Ion	Resp	Lower	Upper
117	100		
82	52.3	39.9	59.9
119	32.0	24.9	37.3



#72
 1,4-Dichlorobenzene-d4
 Concen: 50.000 ug/l
 RT: 13.58 min Scan# 1983
 Delta R.T. 0.00 min
 Lab File: VD067347.D
 Acq: 21 Oct 2020 14:59

Tgt Ion	Resp	Lower	Upper
152	100		
115	57.5	29.3	87.9
150	154.7	0.0	339.0

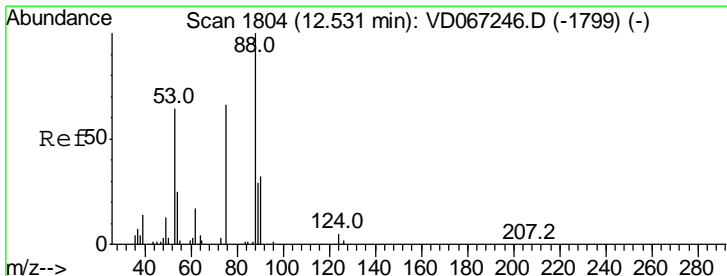
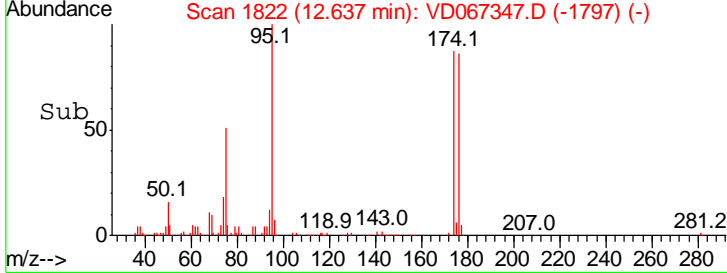
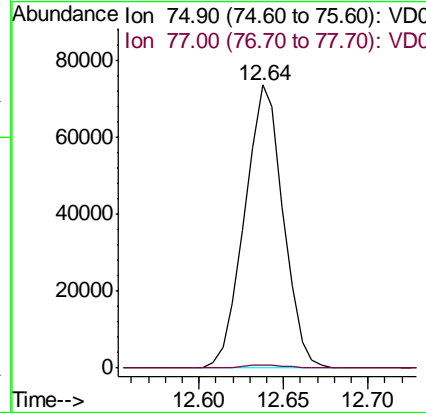
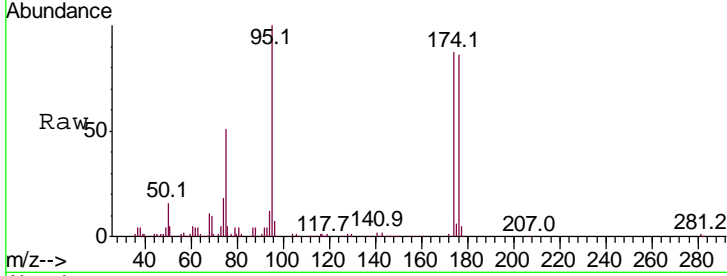




#76
 1,2,3-Trichloropropane
 Concen: 63.790 ug/l
 RT: 12.64 min Scan# 1822
 Delta R.T. -0.15 min
 Lab File: VD067347.D
 Acq: 21 Oct 2020 14:59

Instrument : MSVOA_D
 Client Sampled : 36B

Tgt Ion	Resp	Lower	Upper
75	100		
77	1.4	0.0	0.0#



#81
 trans-1,4-Dichloro-2-butene
 Concen: 144.658 ug/l
 RT: 12.64 min Scan# 1822
 Delta R.T. 0.11 min
 Lab File: VD067347.D
 Acq: 21 Oct 2020 14:59

Tgt Ion	Resp	Lower	Upper
75	100		
53	0.0	78.5	117.7#
89	0.1	39.9	59.9#

