

Data Path : Z:\VOASRV\HPCHEM1\MSVOA D\DATA\VD102120\
 Data File : VD067349.D
 Acq On : 21 Oct 2020 15:54
 Operator : VA/SY
 Sample : L4467-05RE
 Misc : 6.04G/5.00ml/MSVOA D/SOIL
 ALS Vial : 14 Sample Multiplier: 1

Instrument :
 MSVOA_D
 ClientSampleId :
 357RE

Quant Time: Oct 22 00:20:59 2020
 Quant Method : Z:\VOASRV\HPCHEM1\MSVOA_D\METHOD\82D101320S.M
 Quant Title : SW846 8260
 QLast Update : Mon Oct 19 19:13:29 2020
 Response via : Initial Calibration

Internal Standards	R.T.	QIon	Response	Conc	Units	Dev(Min)
1) Pentafluorobenzene	7.98	168	300500	50.00	ug/l	0.00
34) 1,4-Difluorobenzene	8.87	114	498441	50.00	ug/l	0.00
63) Chlorobenzene-d5	11.65	117	476553	50.00	ug/l	0.00
72) 1,4-Dichlorobenzene-d4	13.58	152	203785	50.00	ug/l	0.00

System Monitoring Compounds

33) 1,2-Dichloroethane-d4	8.34	65	172666	57.35	ug/l	0.00
Spiked Amount				50.000		
Recovery				=	114.70%	
35) Dibromofluoromethane	7.92	113	166548	50.21	ug/l	0.00
Spiked Amount				50.000		
Recovery				=	100.42%	
50) Toluene-d8	10.34	98	584294	48.67	ug/l	0.00
Spiked Amount				50.000		
Recovery				=	97.34%	
62) 4-Bromofluorobenzene	12.64	95	193951	46.46	ug/l	0.00
Spiked Amount				50.000		
Recovery				=	92.92%	

Target Compounds

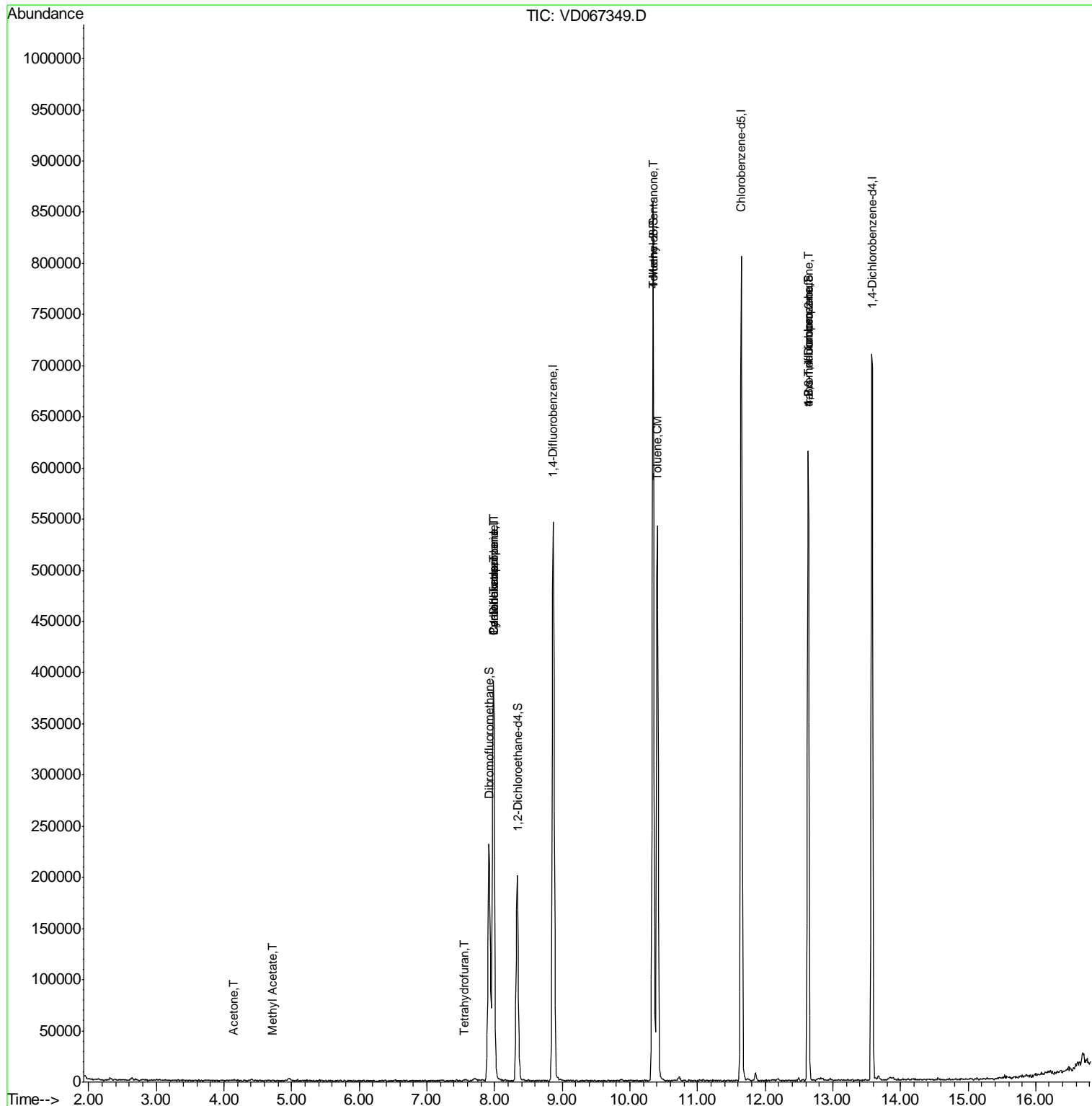
Target Compounds	R.T.	QIon	Response	Conc	Units	Qvalue
2) Dichlorodifluoromethane	1.99	85	133	Below Cal	#	44
5) Bromomethane	2.77	94	54	Below Cal	#	34
11) Tert butyl alcohol	5.22	59	732	Below Cal	#	81
16) Acetone	4.15	43	1035	2.455	ug/l #	42
18) Methyl Acetate	4.72	43	1371	1.426	ug/l #	54
20) Methylene Chloride	4.96	84	1785	Below Cal	#	69
29) Tetrahydrofuran	7.56	42	849	3.178	ug/l	97
31) Cyclohexane	7.98	56	5862	1.691	ug/l #	25
36) 1,1-Dichloropropene	7.98	75	21442	5.075	ug/l #	50
38) Carbon Tetrachloride	7.98	117	29101	5.390	ug/l #	19
51) 4-Methyl-2-Pentanone	10.35	43	2295	1.866	ug/l #	1
52) Toluene	10.41	92	240794	30.504	ug/l	98
76) 1,2,3-Trichloropropane	12.64	75	98732	69.903	ug/l #	100
81) trans-1,4-Dichloro-2-buten	12.64	75	98732	158.518	ug/l #	10

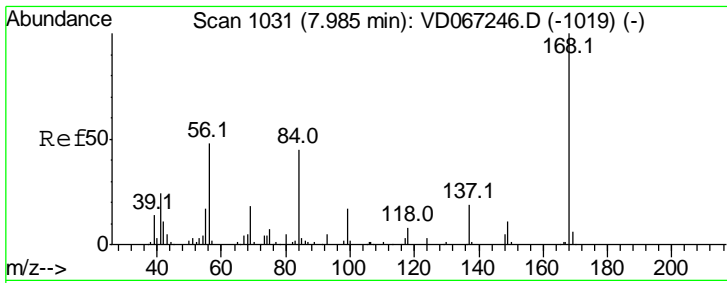
(#) = qualifier out of range (m) = manual integration (+) = signals summed

Data Path : Z:\VOASRV\HPCHEM1\MSVOA D\DATA\VD102120\
 Data File : VD067349.D
 Acq On : 21 Oct 2020 15:54
 Operator : VA/SY
 Sample : L4467-05RE
 Misc : 6.04G/5.00ml/MSVOA D/SOIL
 ALS Vial : 14 Sample Multiplier: 1

Instrument :
 MSVOA_D
 Client Sampled :
 357RE

Quant Time: Oct 22 00:20:59 2020
 Quant Method : Z:\VOASRV\HPCHEM1\MSVOA_D\METHOD\82D101320S.M
 Quant Title : SW846 8260
 QLast Update : Mon Oct 19 19:13:29 2020
 Response via : Initial Calibration

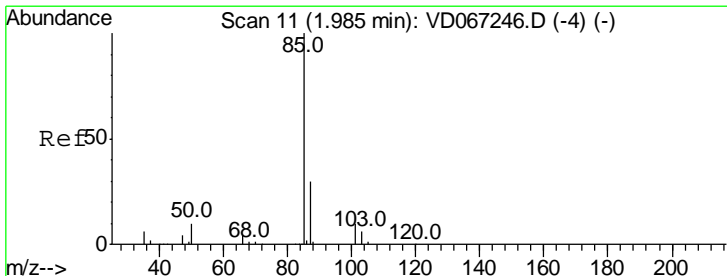
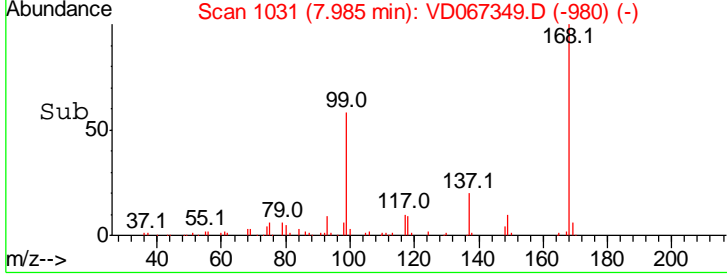
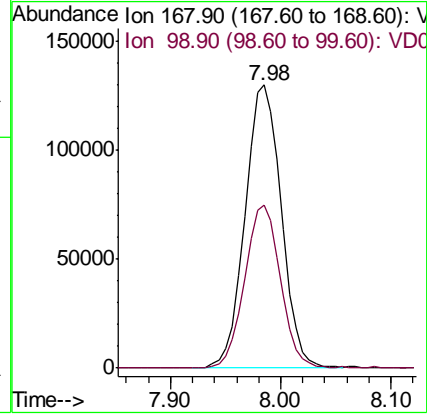
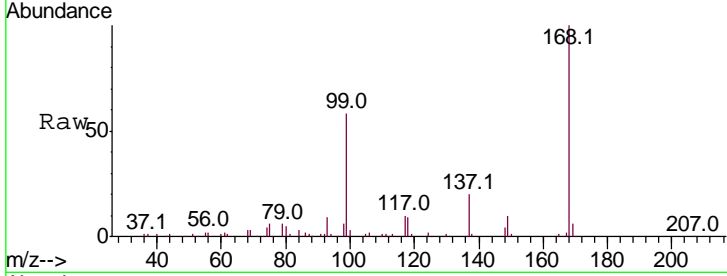




#1
 Pentafluorobenzene
 Concen: 50.000 ug/l
 RT: 7.98 min Scan# 1031
 Delta R.T. 0.00 min
 Lab File: VD067349.D
 Acq: 21 Oct 2020 15:54

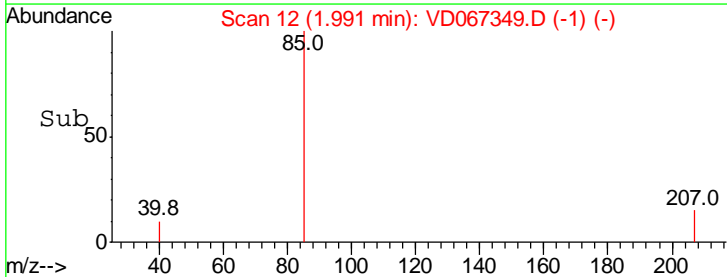
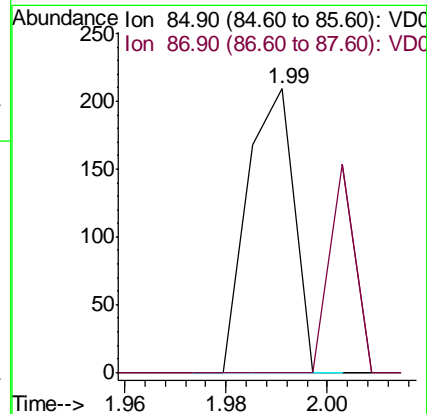
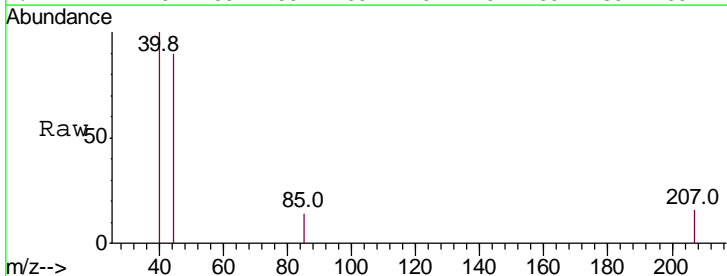
Instrument :
 MSVOA_D
 ClientSampled :
 357RE

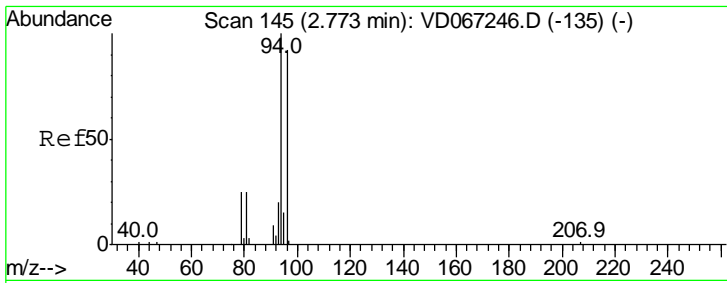
Tgt Ion: 168 Resp: 300500
 Ion Ratio Lower Upper
 168 100
 99 57.6 45.9 68.9



#2
 Dichlorodifluoromethane
 Concen: Below Cal
 RT: 1.99 min Scan# 12
 Delta R.T. 0.01 min
 Lab File: VD067349.D
 Acq: 21 Oct 2020 15:54

Tgt Ion: 85 Resp: 133
 Ion Ratio Lower Upper
 85 100
 87 0.0 15.2 45.6#

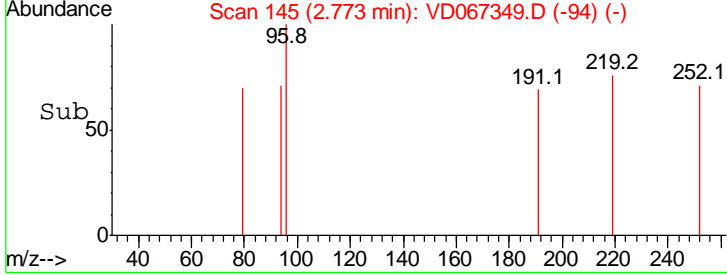
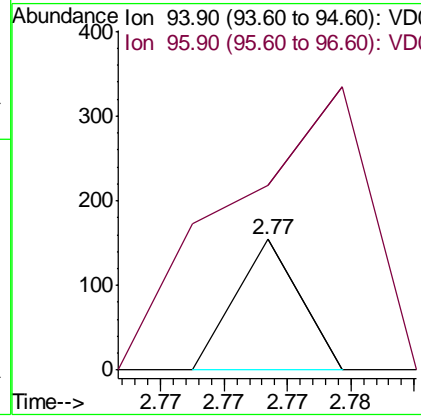
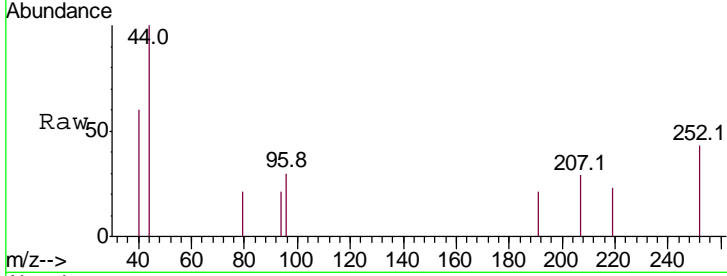




#5
 Bromomethane
 Concen: Below Cal
 RT: 2.77 min Scan# 145
 Delta R.T. 0.00 min
 Lab File: VD067349.D
 Acq: 21 Oct 2020 15:54

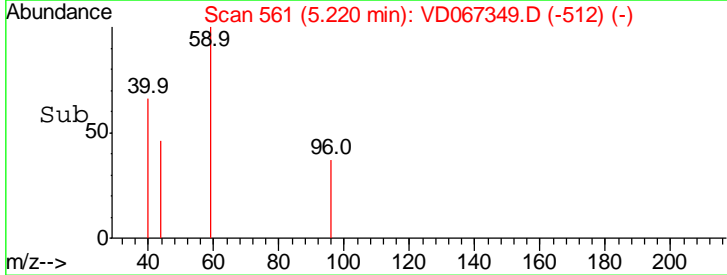
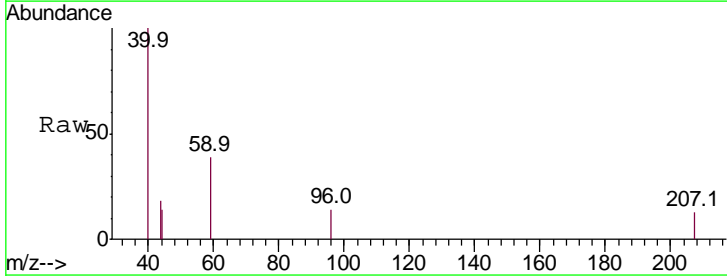
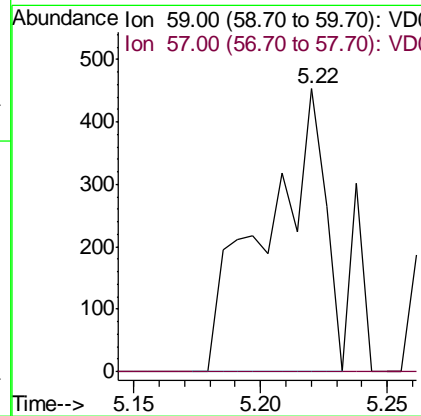
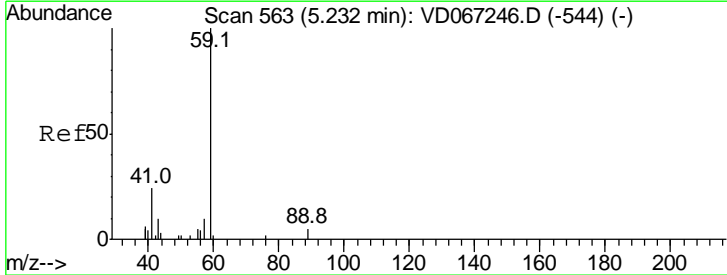
Instrument : MSVOA_D
 ClientSampled : 357RE

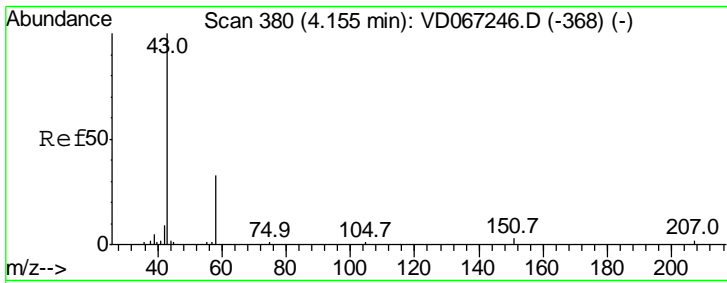
Tgt Ion: 94 Resp: 54
 Ion Ratio Lower Upper
 94 100
 96 29.2 73.8 110.6#



#11
 Tert butyl alcohol
 Concen: Below Cal
 RT: 5.22 min Scan# 561
 Delta R.T. -0.01 min
 Lab File: VD067349.D
 Acq: 21 Oct 2020 15:54

Tgt Ion: 59 Resp: 732
 Ion Ratio Lower Upper
 59 100
 57 0.0 5.1 7.7#

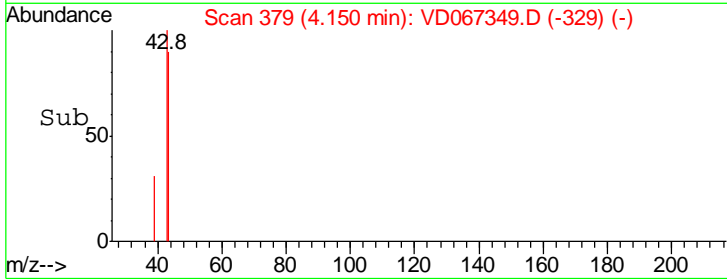
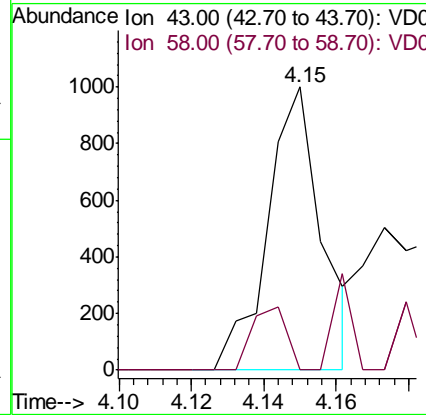
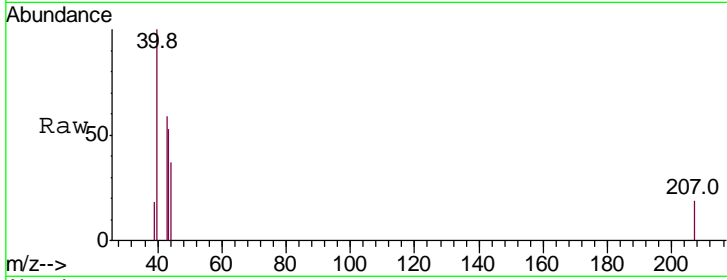




#16
 Acetone
 Concen: 2.455 ug/l
 RT: 4.15 min Scan# 379
 Delta R.T. -0.01 min
 Lab File: VD067349.D
 Acq: 21 Oct 2020 15:54

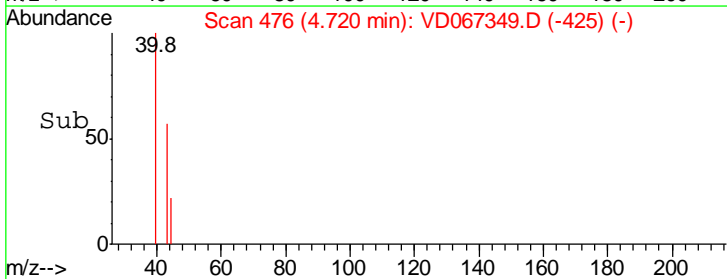
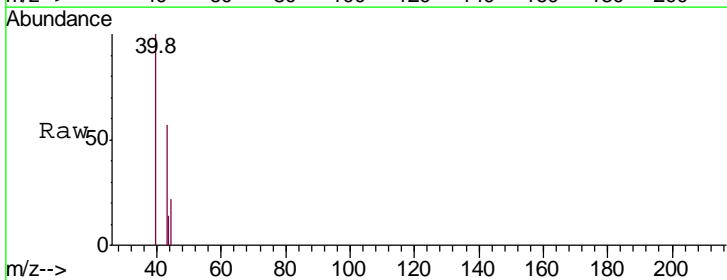
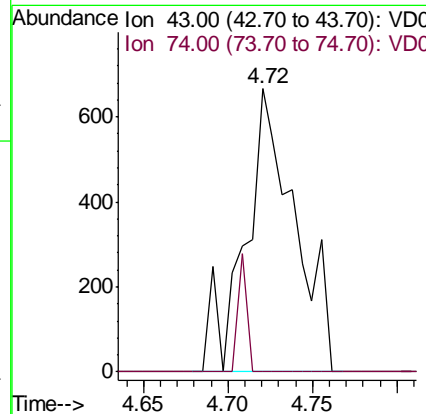
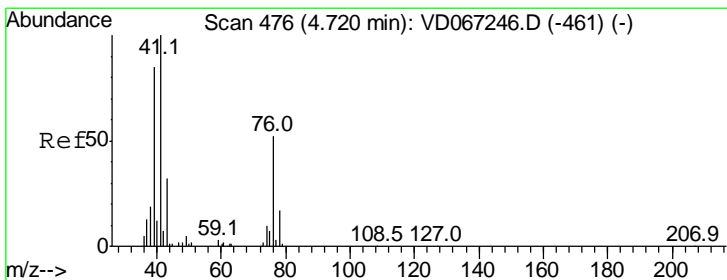
Instrument : MSVOA_D
 ClientSampleId : 357RE

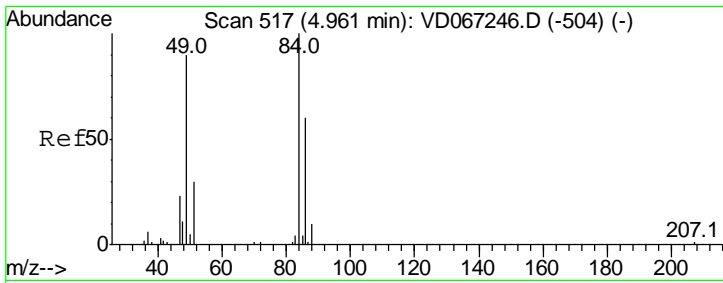
Tgt Ion	Resp	Lower	Upper
43	1035		
58	0.0	26.1	39.1#



#18
 Methyl Acetate
 Concen: 1.426 ug/l
 RT: 4.72 min Scan# 476
 Delta R.T. 0.00 min
 Lab File: VD067349.D
 Acq: 21 Oct 2020 15:54

Tgt Ion	Resp	Lower	Upper
43	1371		
74	7.1	26.6	39.8#

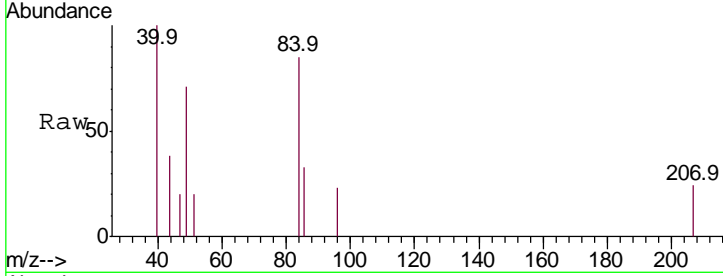




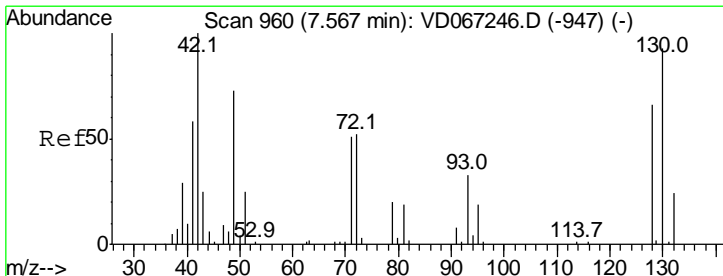
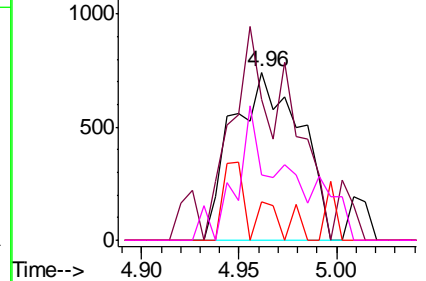
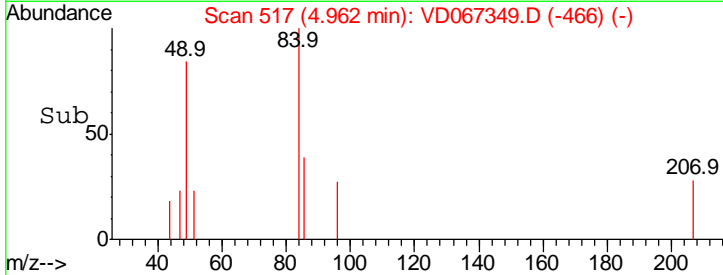
#20
Methylene Chloride
Concen: Below Cal
RT: 4.96 min Scan# 517
Delta R.T. 0.00 min
Lab File: VD067349.D
Acq: 21 Oct 2020 15:54

Instrument :
MSVOA_D
ClientSampled :
357RE

Tgt Ion	Resp	Lower	Upper
84	100		
49	53.8	72.2	108.2#
51	23.0	23.8	35.8#
86	38.5	48.2	72.4#

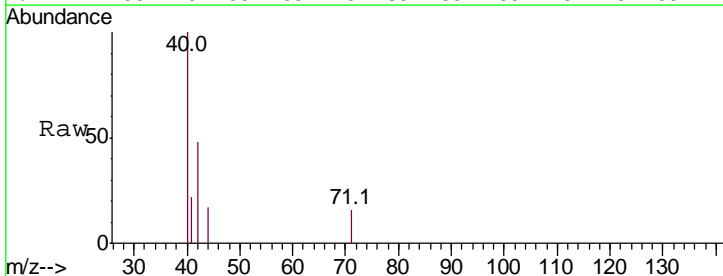


Abundance Ion 83.90 (83.60 to 84.60): VDC
Ion 48.90 (48.60 to 49.60): VDC
Ion 50.90 (50.60 to 51.60): VDC
Ion 85.90 (85.60 to 86.60): VDC

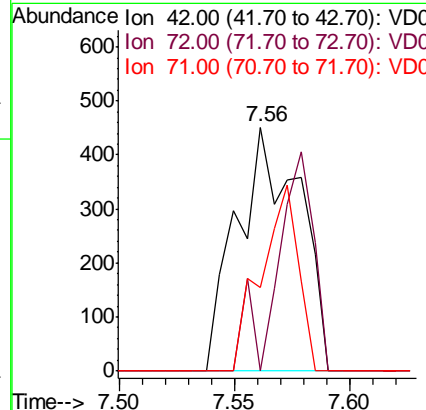
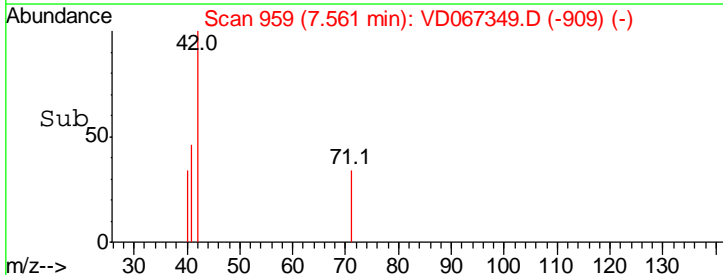


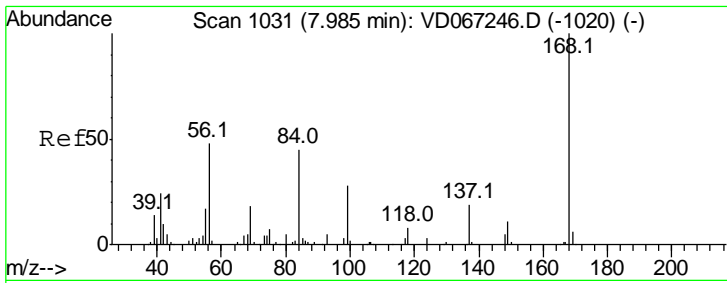
#29
Tetrahydrofuran
Concen: 3.178 ug/l
RT: 7.56 min Scan# 959
Delta R.T. -0.01 min
Lab File: VD067349.D
Acq: 21 Oct 2020 15:54

Tgt Ion	Resp	Lower	Upper
42	100		
72	53.0	43.2	64.8
71	45.7	39.4	59.0



Abundance Ion 42.00 (41.70 to 42.70): VDC
Ion 72.00 (71.70 to 72.70): VDC
Ion 71.00 (70.70 to 71.70): VDC

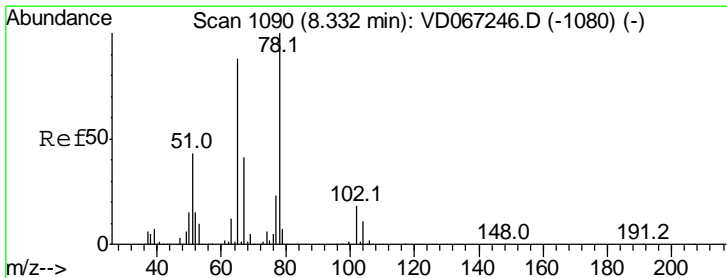
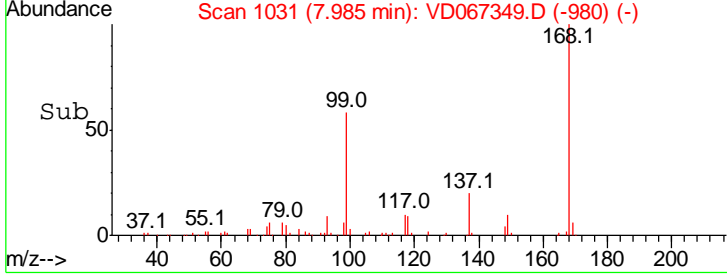
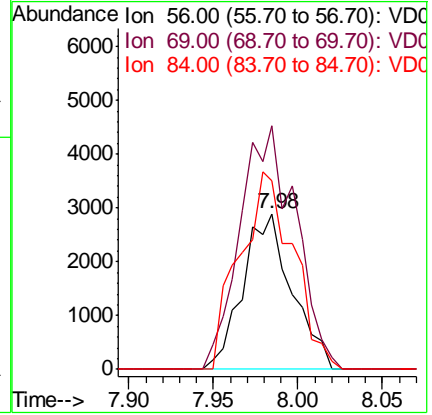
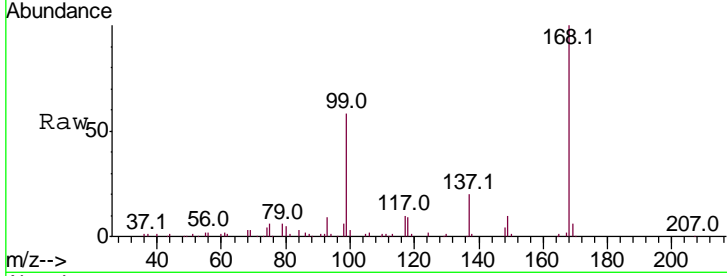




#31
 Cyclohexane
 Concen: 1.691 ug/l
 RT: 7.98 min Scan# 1031
 Delta R.T. 0.00 min
 Lab File: VD067349.D
 Acq: 21 Oct 2020 15:54

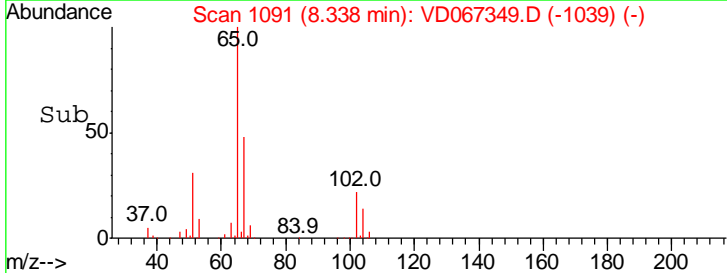
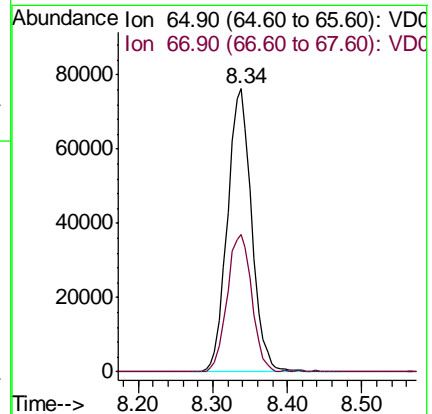
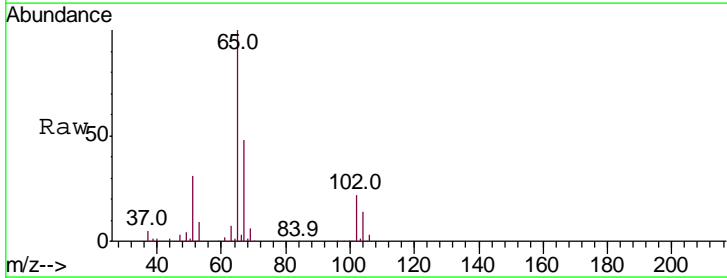
Instrument :
 MSVOA_D
 ClientSampled :
 357RE

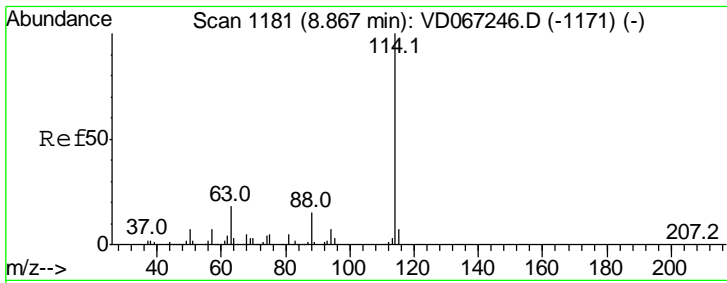
Tgt Ion	Resp	Lower	Upper
56	100		
69	156.5	29.8	44.6#
84	121.4	76.6	114.8#



#33
 1,2-Dichloroethane-d4
 Concen: 57.353 ug/l
 RT: 8.34 min Scan# 1091
 Delta R.T. 0.01 min
 Lab File: VD067349.D
 Acq: 21 Oct 2020 15:54

Tgt Ion	Resp	Lower	Upper
65	100		
67	49.3	0.0	103.8

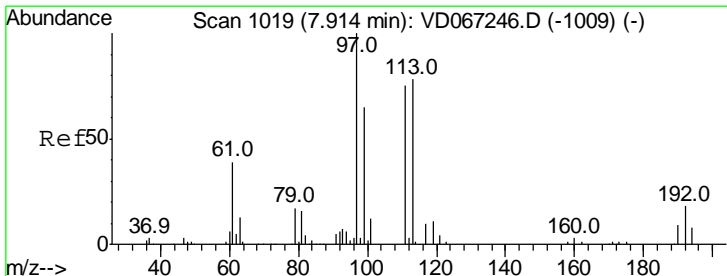
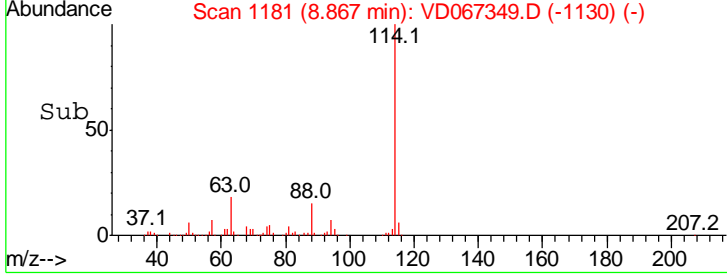
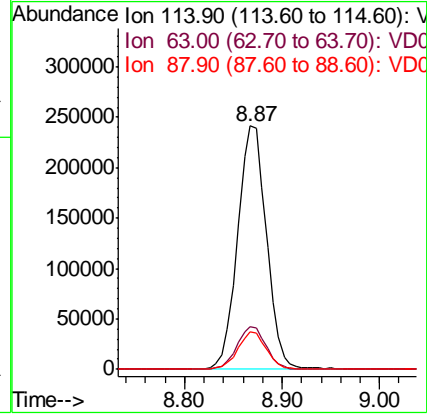
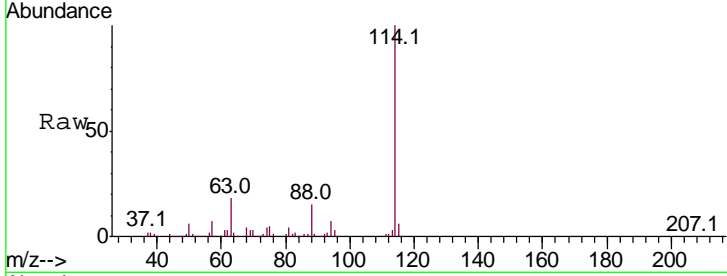




#34
 1,4-Difluorobenzene
 Concen: 50.000 ug/l
 RT: 8.87 min Scan# 1181
 Delta R.T. 0.00 min
 Lab File: VD067349.D
 Acq: 21 Oct 2020 15:54

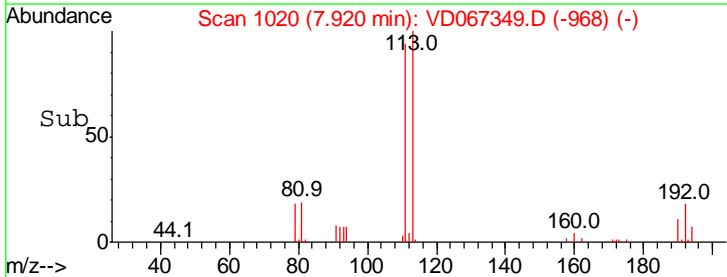
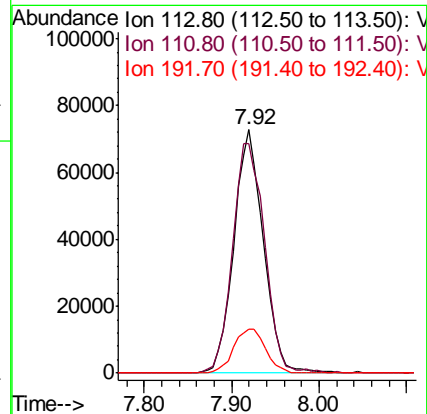
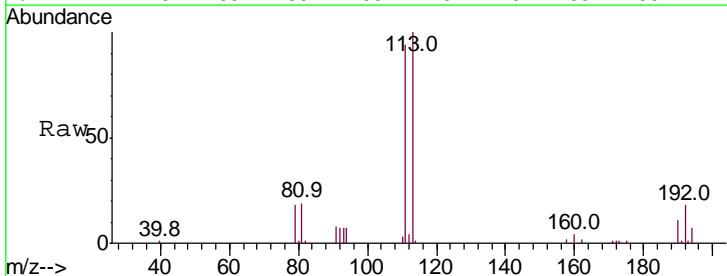
Instrument :
 MSVOA_D
 ClientSampled :
 357RE

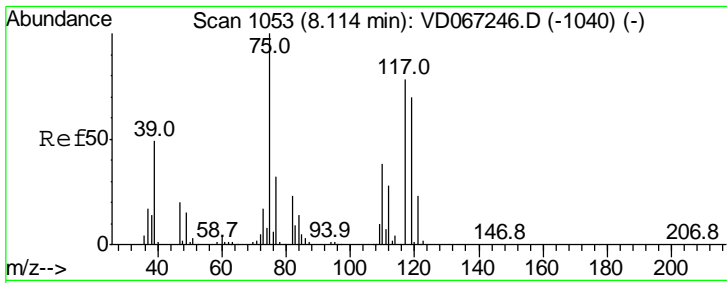
Tgt Ion	Resp	Lower	Upper
114	100		
63	17.7	0.0	35.0
88	15.4	0.0	30.6



#35
 Dibromofluoromethane
 Concen: 50.208 ug/l
 RT: 7.92 min Scan# 1020
 Delta R.T. 0.01 min
 Lab File: VD067349.D
 Acq: 21 Oct 2020 15:54

Tgt Ion	Resp	Lower	Upper
113	100		
111	101.6	81.6	122.4
192	19.6	17.0	25.4

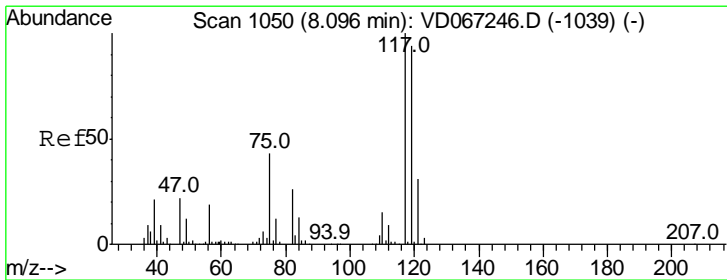
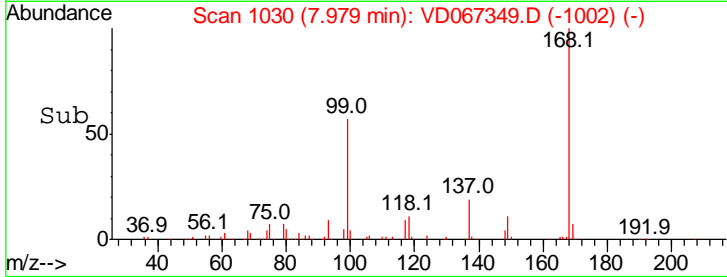
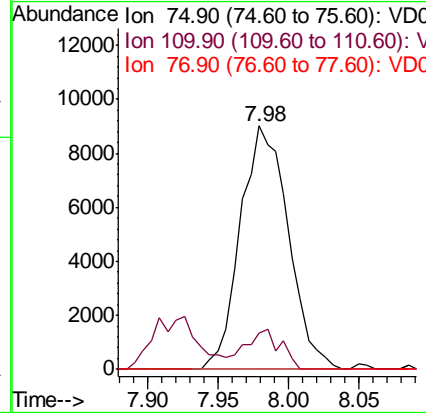
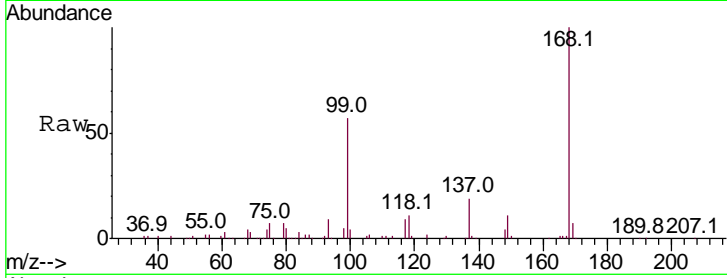




#36
 1,1-Dichloropropene
 Concen: 5.075 ug/l
 RT: 7.98 min Scan# 1030
 Delta R.T. -0.14 min
 Lab File: VD067349.D
 Acq: 21 Oct 2020 15:54

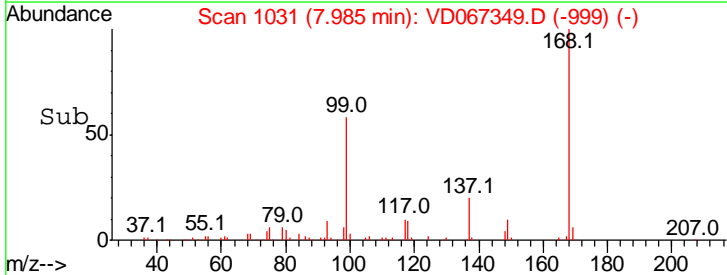
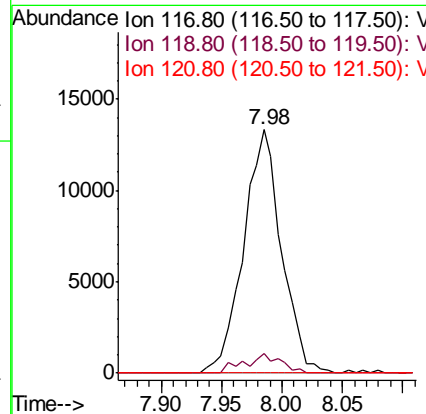
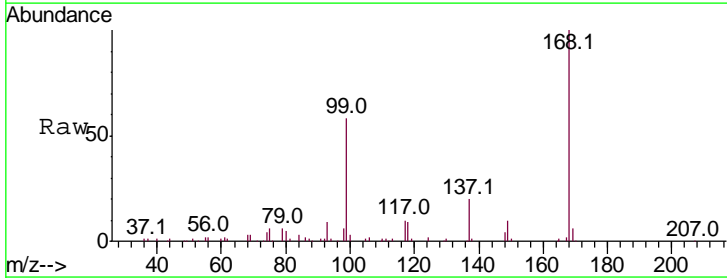
Instrument :
 MSVOA_D
 ClientSampleID :
 357RE

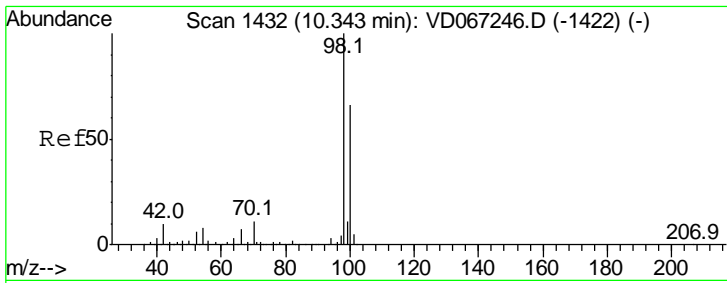
Tgt Ion	Resp	Lower	Upper
75	100		
110	12.0	19.6	58.7#
77	0.0	24.6	37.0#



#38
 Carbon Tetrachloride
 Concen: 5.390 ug/l
 RT: 7.98 min Scan# 1031
 Delta R.T. -0.11 min
 Lab File: VD067349.D
 Acq: 21 Oct 2020 15:54

Tgt Ion	Resp	Lower	Upper
117	100		
119	8.0	75.0	112.4#
121	0.0	24.9	37.3#

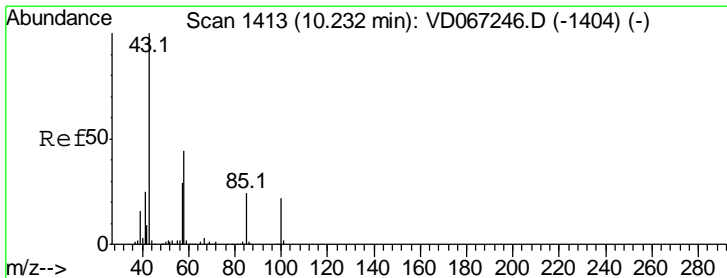
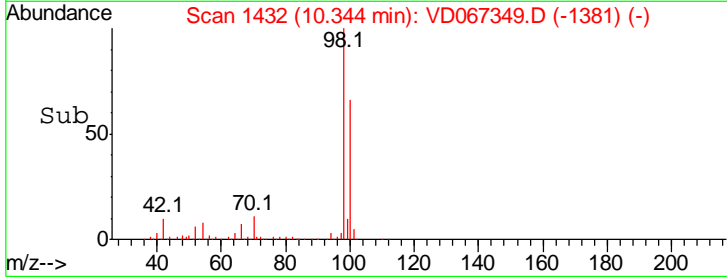
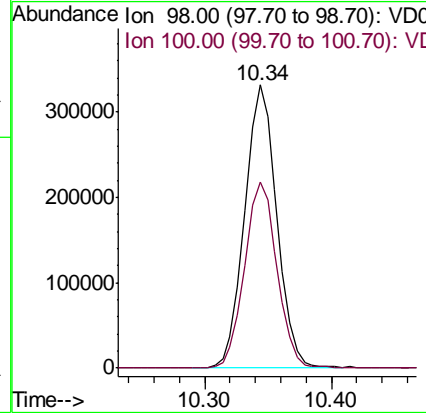
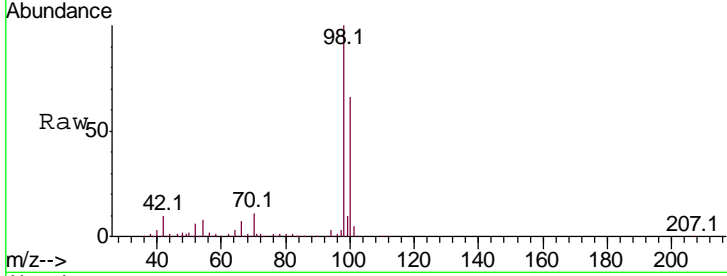




#50
 Toluene-d8
 Concen: 48.673 ug/l
 RT: 10.34 min Scan# 1432
 Delta R.T. 0.00 min
 Lab File: VD067349.D
 Acq: 21 Oct 2020 15:54

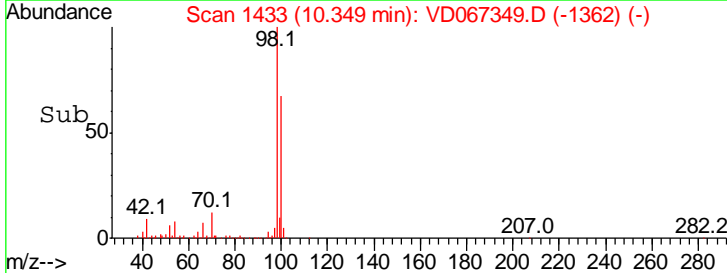
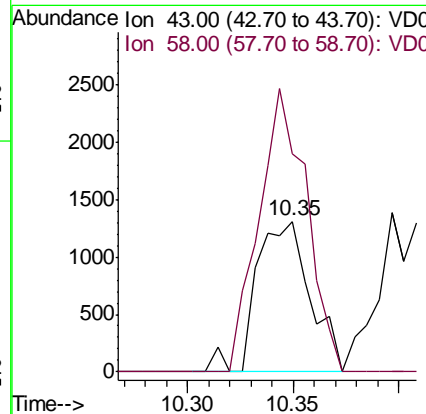
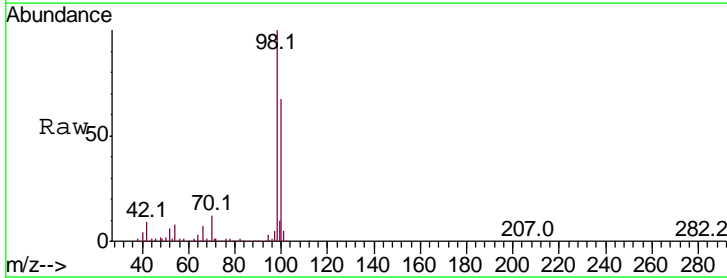
Instrument : MSVOA_D
 ClientSampled : 357RE

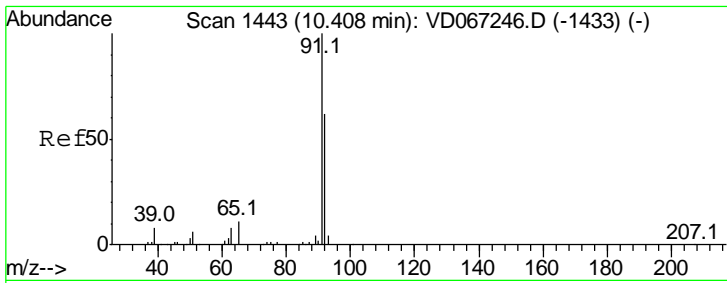
Tgt Ion	Resp	Lower	Upper
98	100		
100	66.6	53.1	79.7



#51
 4-Methyl-2-Pentanone
 Concen: 1.866 ug/l
 RT: 10.35 min Scan# 1433
 Delta R.T. 0.12 min
 Lab File: VD067349.D
 Acq: 21 Oct 2020 15:54

Tgt Ion	Resp	Lower	Upper
43	100		
58	168.5	35.7	53.5#

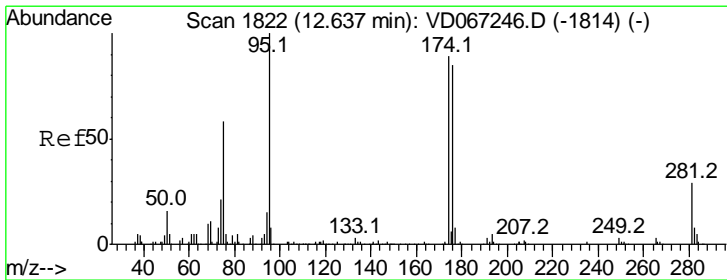
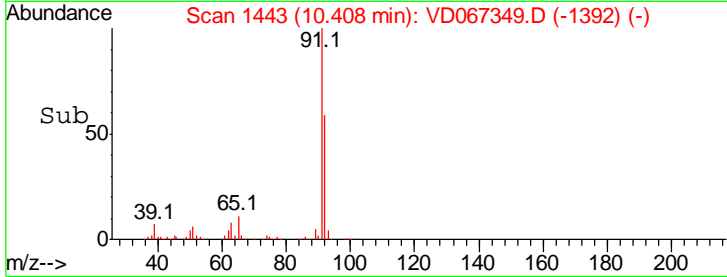
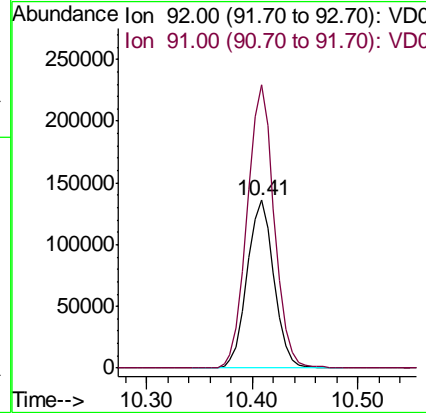
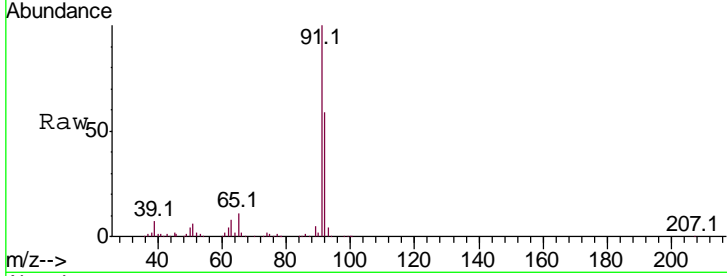




#52
 Toluene
 Concen: 30.504 ug/l
 RT: 10.41 min Scan# 1443
 Delta R.T. 0.00 min
 Lab File: VD067349.D
 Acq: 21 Oct 2020 15:54

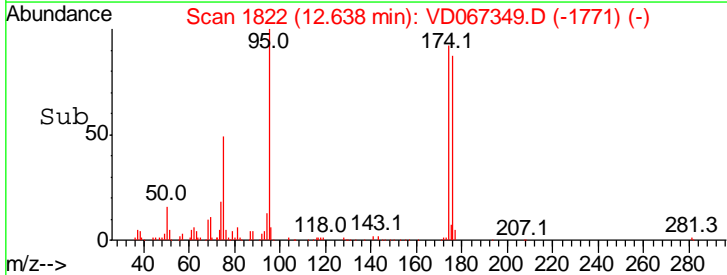
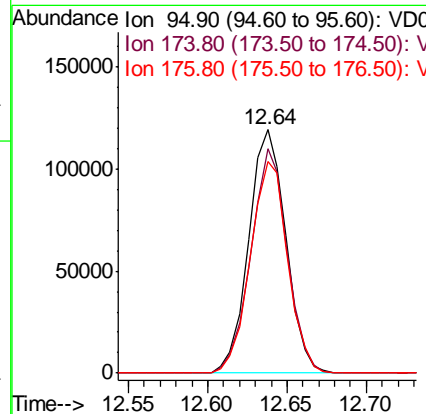
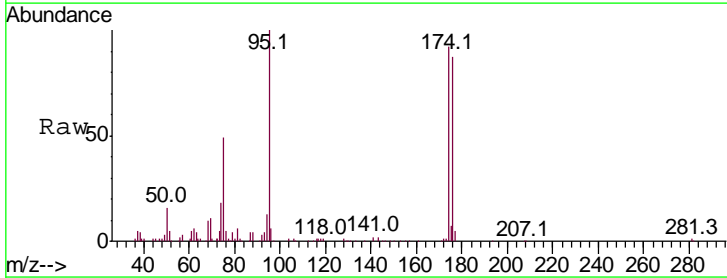
Instrument :
 MSVOA_D
 ClientSampled :
 357RE

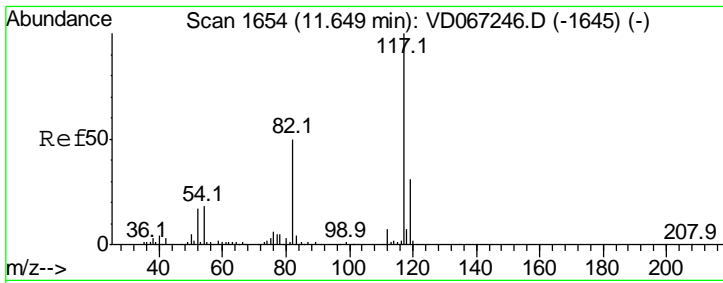
Tgt Ion: 92 Resp: 240794
 Ion Ratio Lower Upper
 92 100
 91 169.7 133.8 200.8



#62
 4-Bromofluorobenzene
 Concen: 46.464 ug/l
 RT: 12.64 min Scan# 1822
 Delta R.T. 0.00 min
 Lab File: VD067349.D
 Acq: 21 Oct 2020 15:54

Tgt Ion: 95 Resp: 193951
 Ion Ratio Lower Upper
 95 100
 174 90.1 0.0 175.2
 176 87.2 0.0 168.6

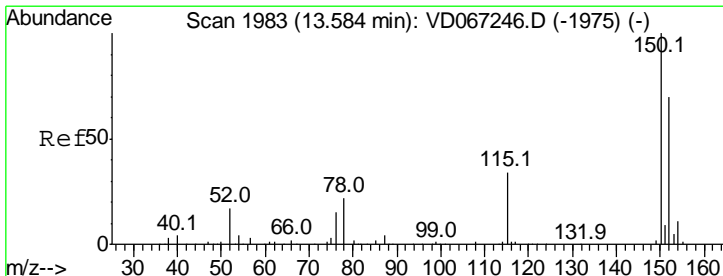
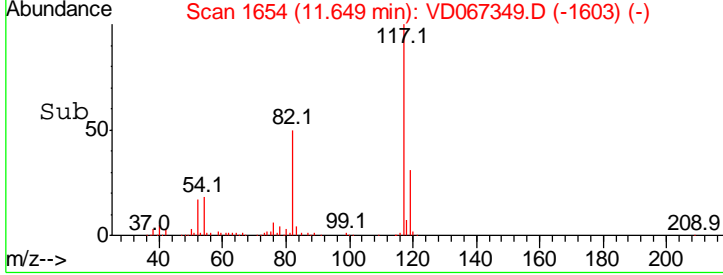
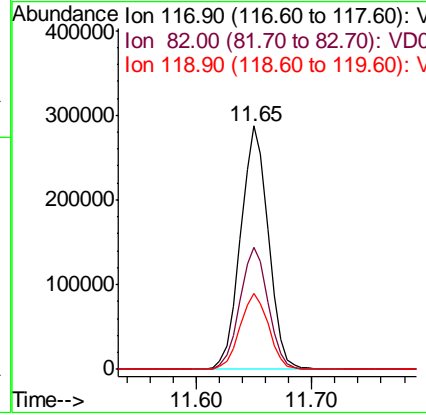
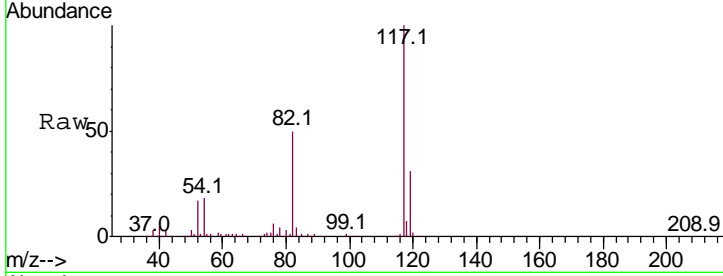




#63
 Chlorobenzene-d5
 Concen: 50.000 ug/l
 RT: 11.65 min Scan# 1654
 Delta R.T. 0.00 min
 Lab File: VD067349.D
 Acq: 21 Oct 2020 15:54

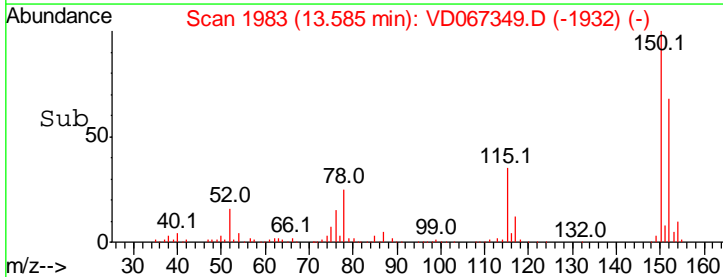
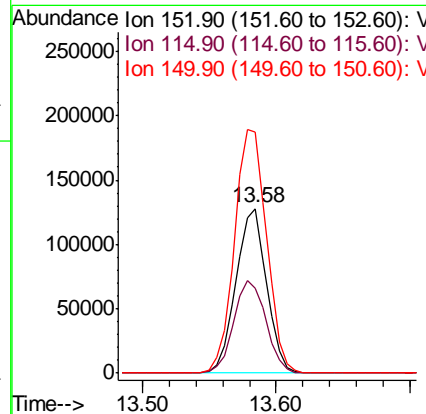
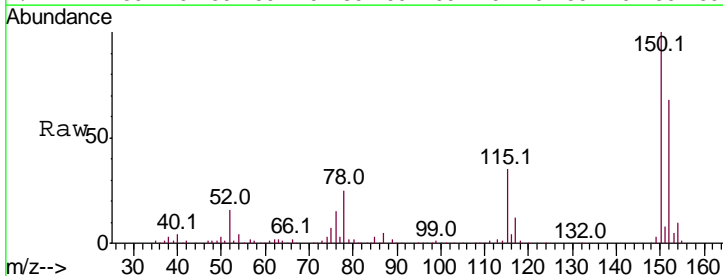
Instrument : MSVOA_D
 ClientSampled : 357RE

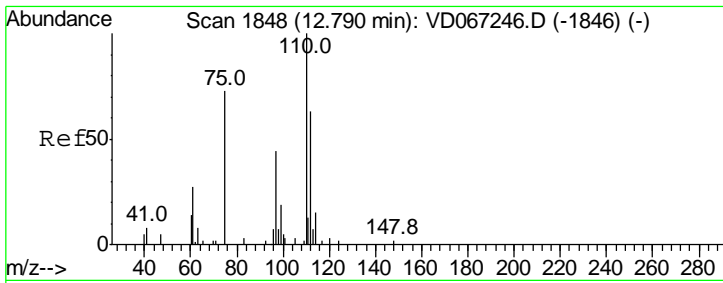
Tgt Ion	Resp	Lower	Upper
117	100		
82	50.4	39.9	59.9
119	31.2	24.9	37.3



#72
 1,4-Dichlorobenzene-d4
 Concen: 50.000 ug/l
 RT: 13.58 min Scan# 1983
 Delta R.T. 0.00 min
 Lab File: VD067349.D
 Acq: 21 Oct 2020 15:54

Tgt Ion	Resp	Lower	Upper
152	100		
115	58.9	29.3	87.9
150	155.5	0.0	339.0

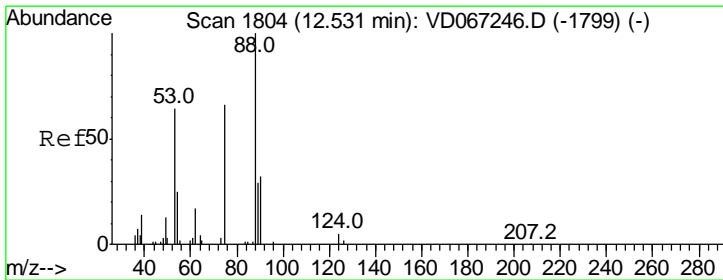
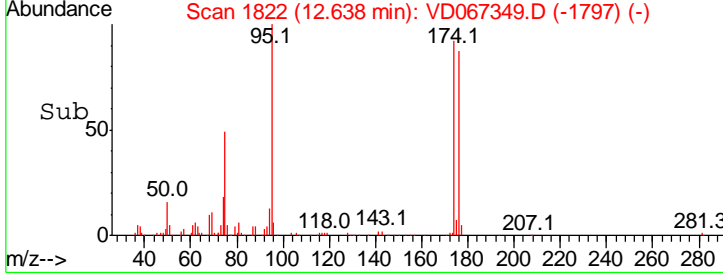
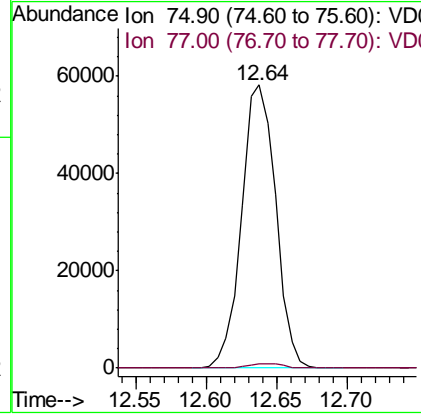
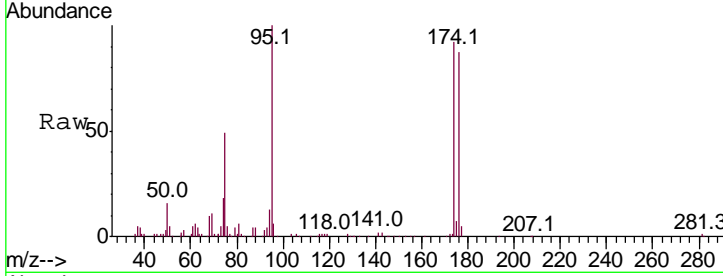




#76
 1,2,3-Trichloropropane
 Concen: 69.903 ug/l
 RT: 12.64 min Scan# 1822
 Delta R.T. -0.15 min
 Lab File: VD067349.D
 Acq: 21 Oct 2020 15:54

Instrument : MSVOA_D
 ClientSampled : 357RE

Tgt Ion	Resp	Lower	Upper
75	100		
77	1.6	0.0	0.0#



#81
 trans-1,4-Dichloro-2-butene
 Concen: 158.518 ug/l
 RT: 12.64 min Scan# 1822
 Delta R.T. 0.11 min
 Lab File: VD067349.D
 Acq: 21 Oct 2020 15:54

Tgt Ion	Resp	Lower	Upper
75	100		
53	0.0	78.5	117.7#
89	0.0	39.9	59.9#

