

Data Path : Z:\VOASRV\HPCHEM1\MSVOA D\DATA\VD102120\  
 Data File : VD067351.D  
 Acq On : 21 Oct 2020 16:49  
 Operator : VA/SY  
 Sample : L4484-01  
 Misc : 4.87G/5.00ml/MSVOA D/SOIL  
 ALS Vial : 16 Sample Multiplier: 1

Instrument :  
 MSVOA\_D  
 ClientSampleId :  
 72-11998

Quant Time: Oct 22 00:21:19 2020  
 Quant Method : Z:\VOASRV\HPCHEM1\MSVOA\_D\METHOD\82D101320S.M  
 Quant Title : SW846 8260  
 QLast Update : Mon Oct 19 19:13:29 2020  
 Response via : Initial Calibration

Internal Standards	R.T.	QIon	Response	Conc	Units	Dev(Min)
1) Pentafluorobenzene	7.98	168	290023	50.00	ug/l	0.00
34) 1,4-Difluorobenzene	8.87	114	479857	50.00	ug/l	0.00
63) Chlorobenzene-d5	11.65	117	466621	50.00	ug/l	0.00
72) 1,4-Dichlorobenzene-d4	13.58	152	233189	50.00	ug/l	0.00

## System Monitoring Compounds

33) 1,2-Dichloroethane-d4	8.34	65	156895	54.00	ug/l	0.00
Spiked Amount				50.000		
			Recovery	=	108.00%	
35) Dibromofluoromethane	7.91	113	157255	49.24	ug/l	0.00
Spiked Amount				50.000		
			Recovery	=	98.48%	
50) Toluene-d8	10.34	98	559843	48.44	ug/l	0.00
Spiked Amount				50.000		
			Recovery	=	96.88%	
62) 4-Bromofluorobenzene	12.64	95	204153	50.80	ug/l	0.00
Spiked Amount				50.000		
			Recovery	=	101.60%	

## Target Compounds

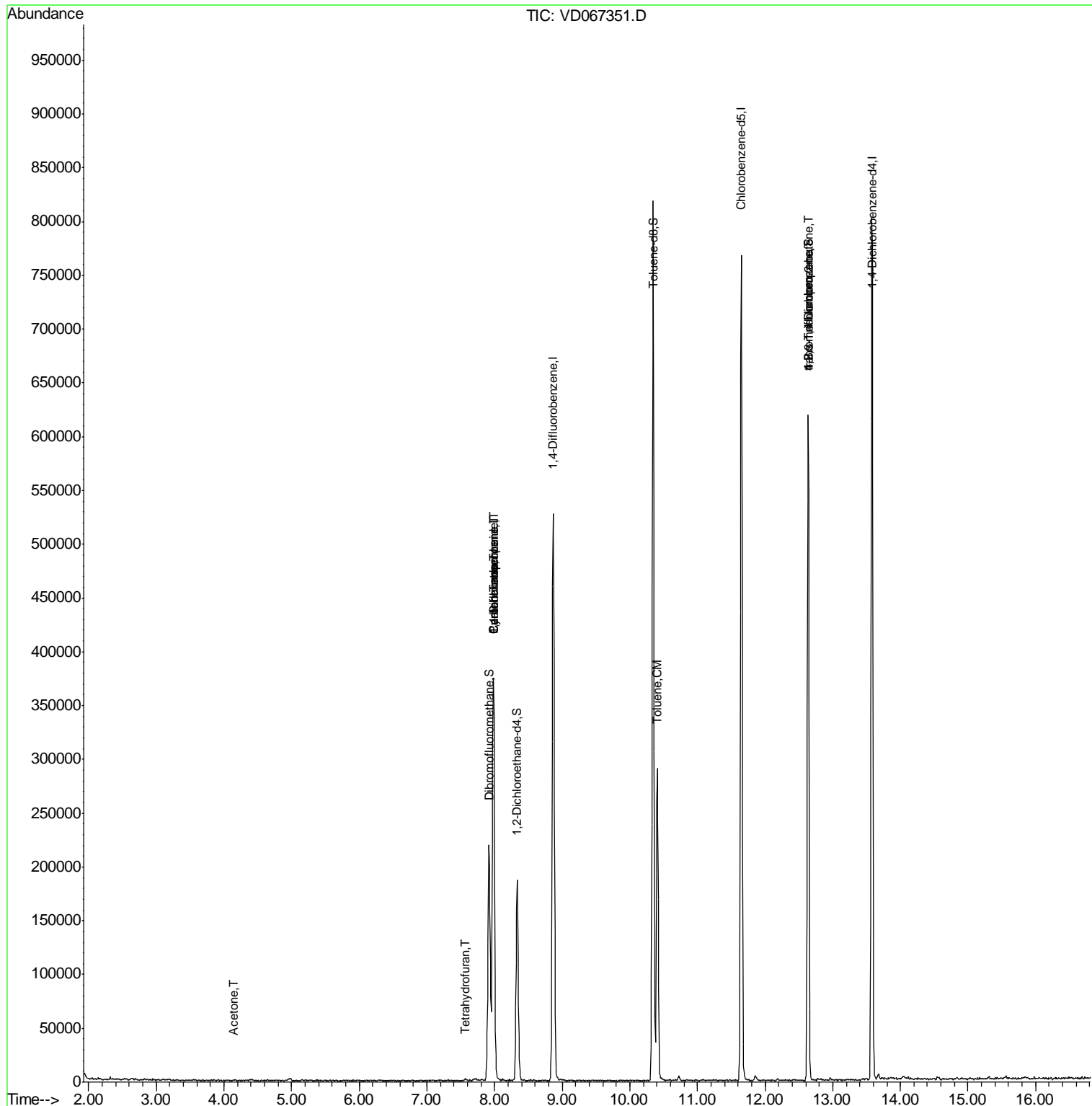
					Qvalue	
5) Bromomethane	2.79	94	97	Below Cal	#	70
16) Acetone	4.15	43	508	1.248	ug/l #	42
20) Methylene Chloride	4.97	84	2068	Below Cal	#	62
29) Tetrahydrofuran	7.57	42	816	3.165	ug/l #	65
31) Cyclohexane	7.98	56	5381	1.608	ug/l #	5
36) 1,1-Dichloropropene	7.98	75	19968	4.910	ug/l #	49
38) Carbon Tetrachloride	7.98	117	30431	5.854	ug/l #	17
52) Toluene	10.41	92	130892	17.224	ug/l	96
76) 1,2,3-Trichloropropane	12.64	75	102771	63.587	ug/l #	100
81) trans-1,4-Dichloro-2-buten	12.64	75	102771	144.197	ug/l #	10

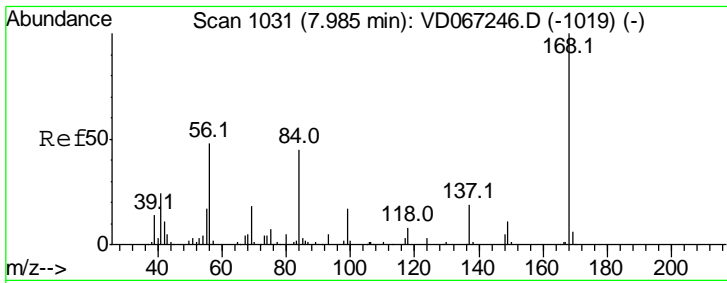
(#) = qualifier out of range (m) = manual integration (+) = signals summed

Data Path : Z:\VOASRV\HPCHEM1\MSVOA D\DATA\VD102120\  
 Data File : VD067351.D  
 Acq On : 21 Oct 2020 16:49  
 Operator : VA/SY  
 Sample : L4484-01  
 Misc : 4.87G/5.00ml/MSVOA D/SOIL  
 ALS Vial : 16 Sample Multiplier: 1

Instrument :  
 MSVOA\_D  
 ClientSampled :  
 72-11998

Quant Time: Oct 22 00:21:19 2020  
 Quant Method : Z:\VOASRV\HPCHEM1\MSVOA\_D\METHOD\82D101320S.M  
 Quant Title : SW846 8260  
 QLast Update : Mon Oct 19 19:13:29 2020  
 Response via : Initial Calibration

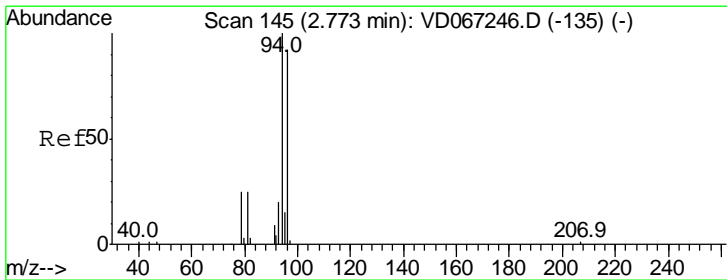
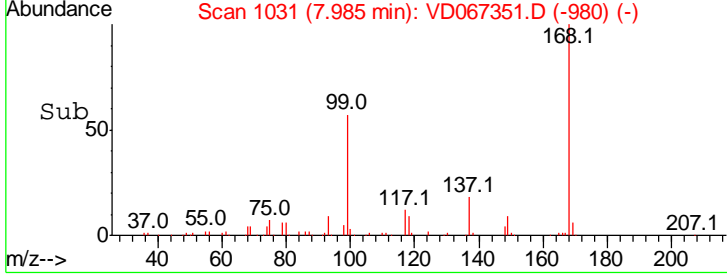
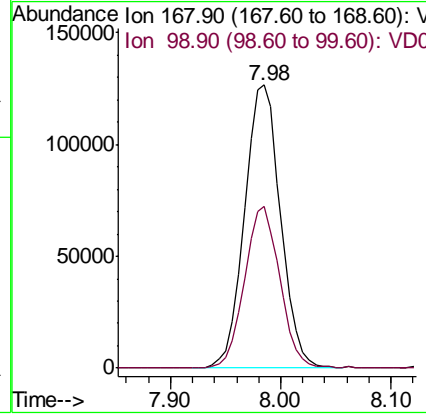
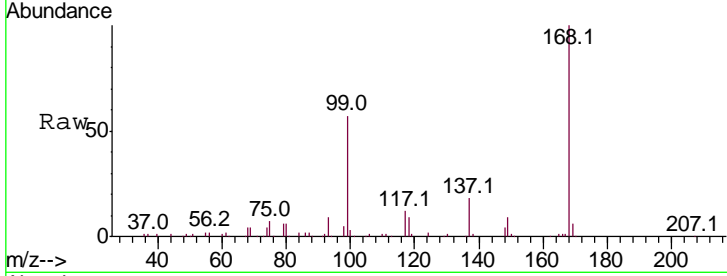




#1  
 Pentafluorobenzene  
 Concen: 50.000 ug/l  
 RT: 7.98 min Scan# 1031  
 Delta R.T. 0.00 min  
 Lab File: VD067351.D  
 Acq: 21 Oct 2020 16:49

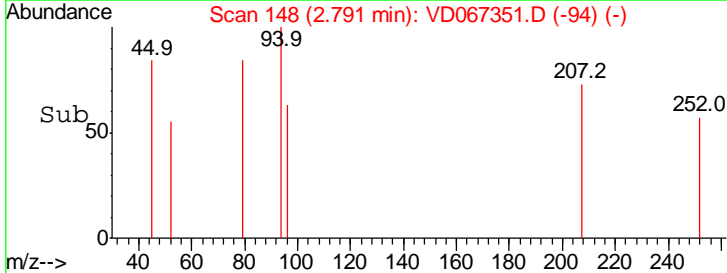
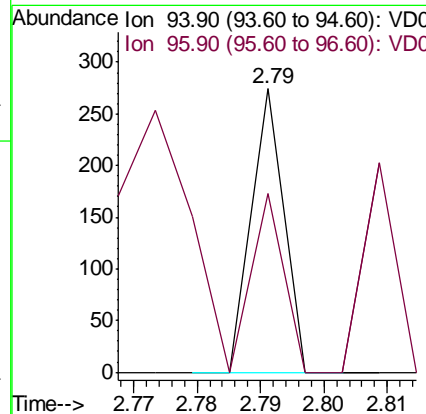
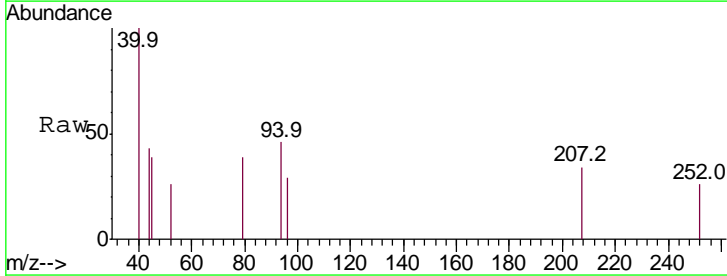
Instrument : MSVOA\_D  
 ClientSampleID : 72-11998

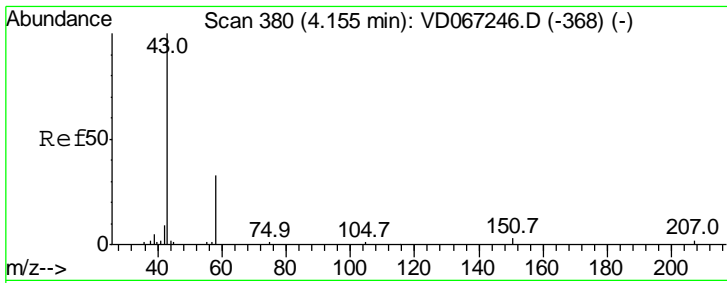
Tgt Ion	Resp	Lower	Upper
168	100		
99	57.2	45.9	68.9



#5  
 Bromomethane  
 Concen: Below Cal  
 RT: 2.79 min Scan# 148  
 Delta R.T. 0.02 min  
 Lab File: VD067351.D  
 Acq: 21 Oct 2020 16:49

Tgt Ion	Resp	Lower	Upper
94	100		
96	63.1	73.8	110.6#

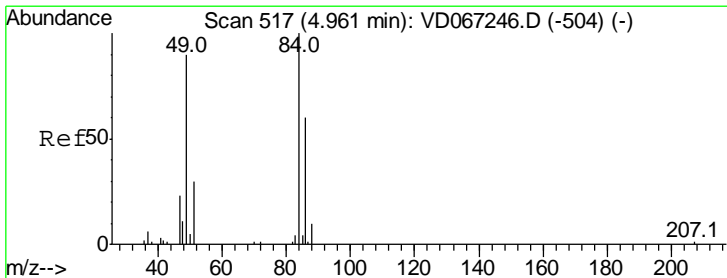
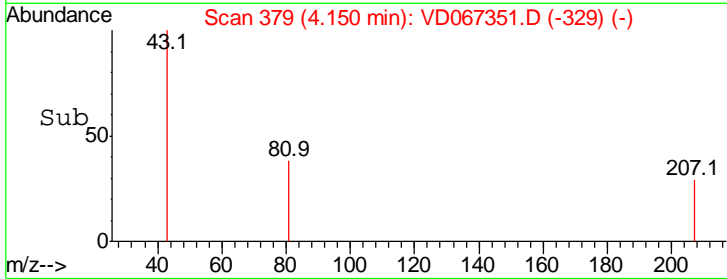
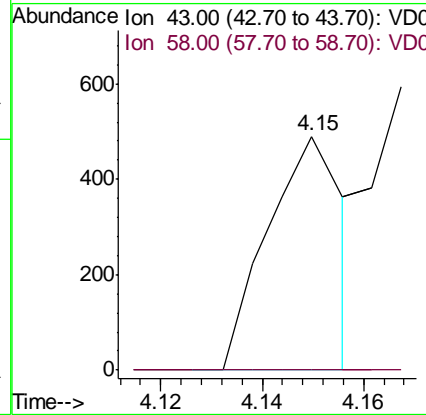
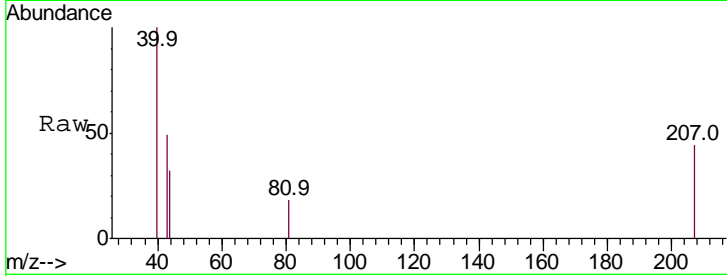




#16  
 Acetone  
 Concen: 1.248 ug/l  
 RT: 4.15 min Scan# 379  
 Delta R.T. -0.01 min  
 Lab File: VD067351.D  
 Acq: 21 Oct 2020 16:49

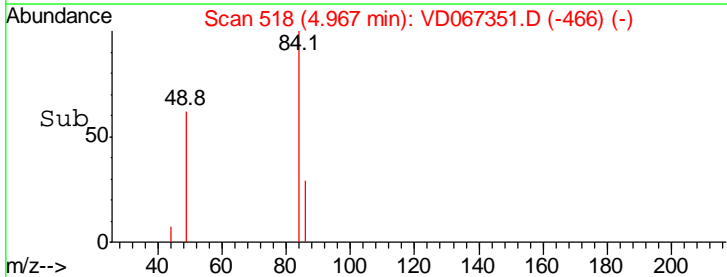
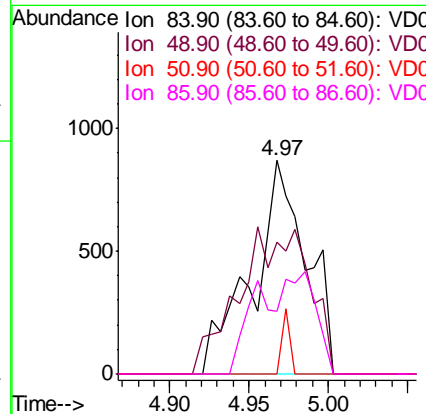
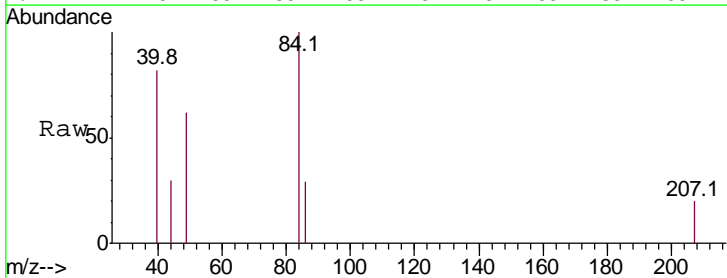
Instrument :  
 MSVOA\_D  
 ClientSampled :  
 72-11998

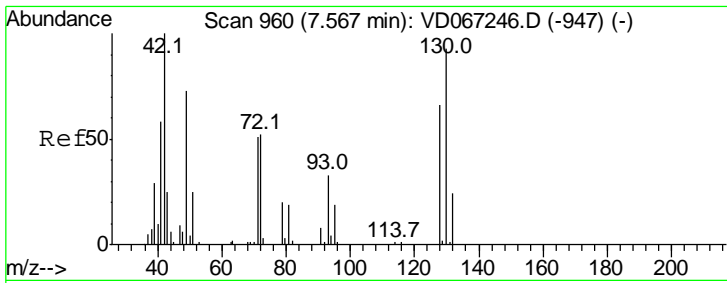
Tgt Ion: 43 Resp: 508  
 Ion Ratio Lower Upper  
 43 100  
 58 0.0 26.1 39.1#



#20  
 Methylene Chloride  
 Concen: Below Cal  
 RT: 4.97 min Scan# 518  
 Delta R.T. 0.01 min  
 Lab File: VD067351.D  
 Acq: 21 Oct 2020 16:49

Tgt Ion: 84 Resp: 2068  
 Ion Ratio Lower Upper  
 84 100  
 49 62.0 72.2 108.2#  
 51 0.0 23.8 35.8#  
 86 29.2 48.2 72.4#

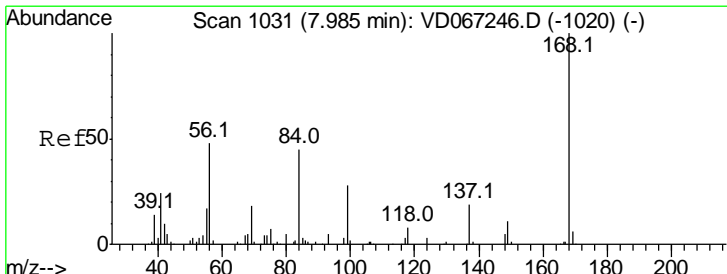
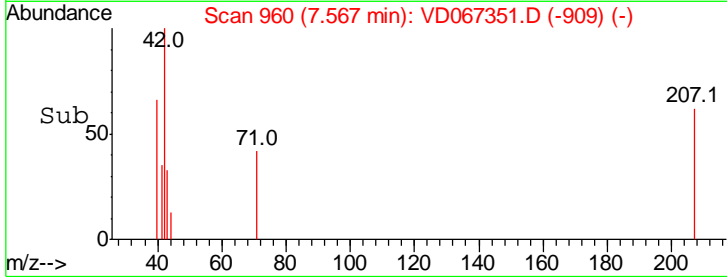
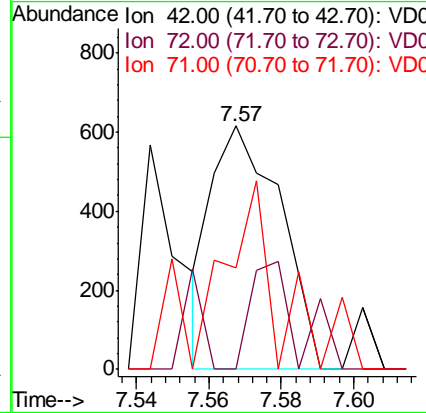
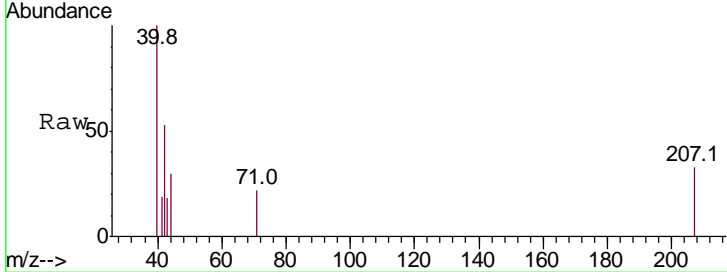




#29  
 Tetrahydrofuran  
 Concen: 3.165 ug/l  
 RT: 7.57 min Scan# 960  
 Delta R.T. 0.00 min  
 Lab File: VD067351.D  
 Acq: 21 Oct 2020 16:49

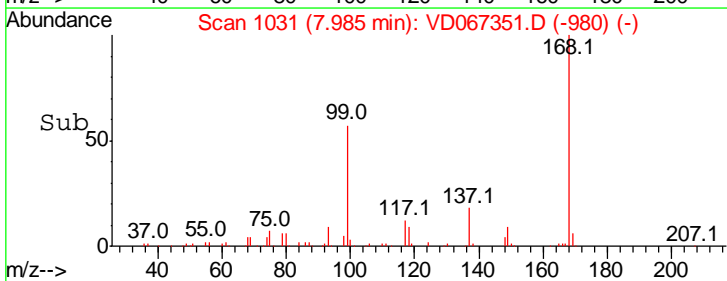
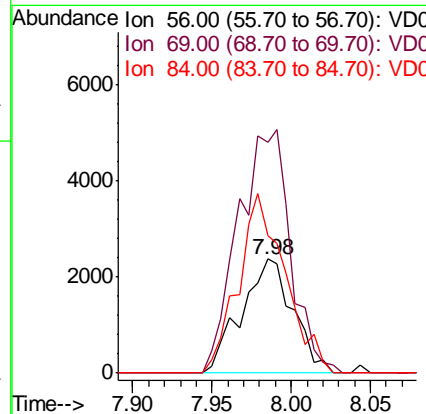
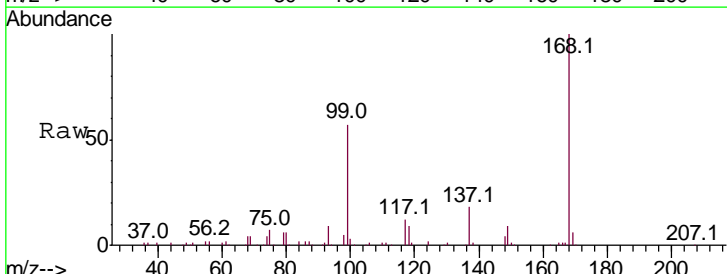
Instrument :  
 MSVOA\_D  
 ClientSampleID :  
 72-11998

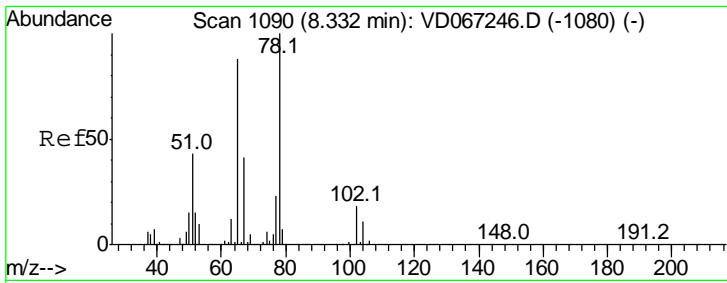
Tgt Ion	Resp	Lower	Upper
42	100		
72	30.5	43.2	64.8#
71	74.4	39.4	59.0#



#31  
 Cyclohexane  
 Concen: 1.608 ug/l  
 RT: 7.98 min Scan# 1031  
 Delta R.T. 0.00 min  
 Lab File: VD067351.D  
 Acq: 21 Oct 2020 16:49

Tgt Ion	Resp	Lower	Upper
56	100		
69	202.0	29.8	44.6#
84	119.7	76.6	114.8#

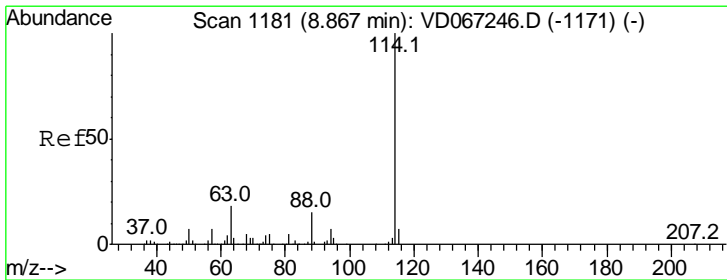
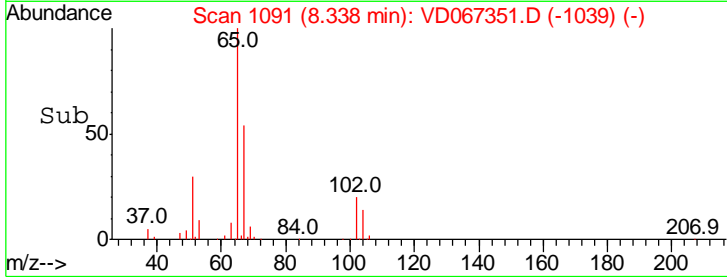
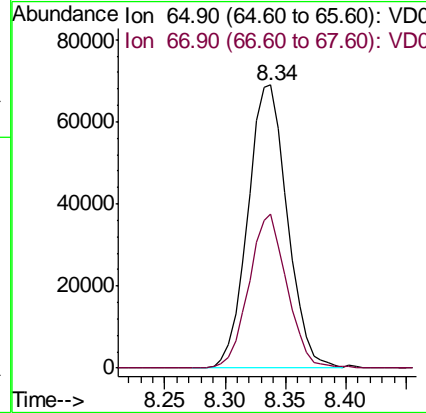
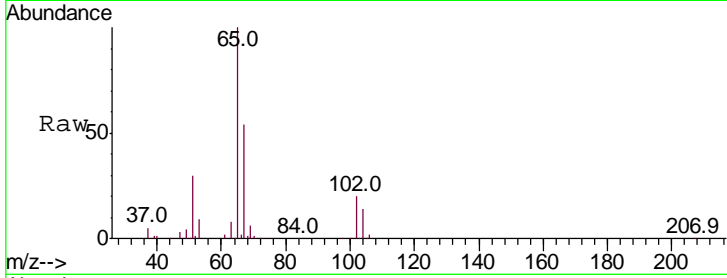




#33  
 1,2-Dichloroethane-d4  
 Concen: 53.998 ug/l  
 RT: 8.34 min Scan# 1091  
 Delta R.T. 0.01 min  
 Lab File: VD067351.D  
 Acq: 21 Oct 2020 16:49

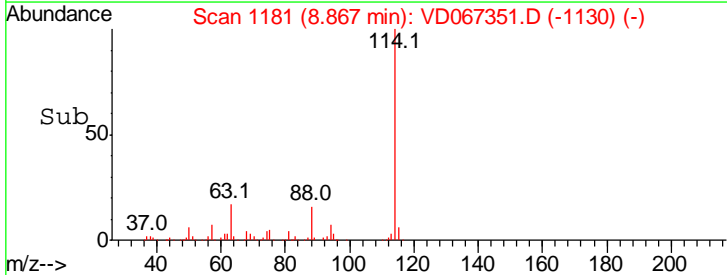
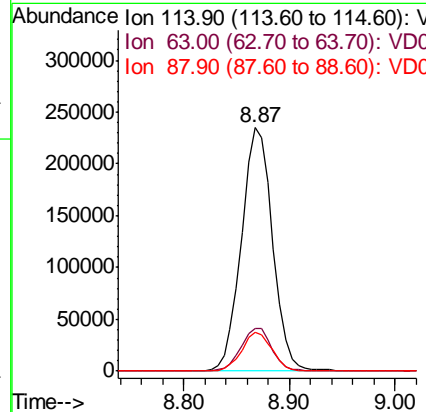
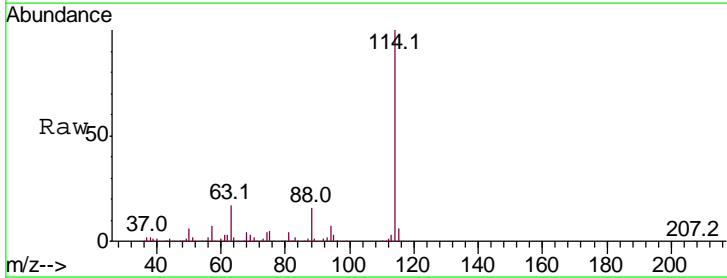
Instrument :  
 MSVOA\_D  
 ClientSampled :  
 72-11998

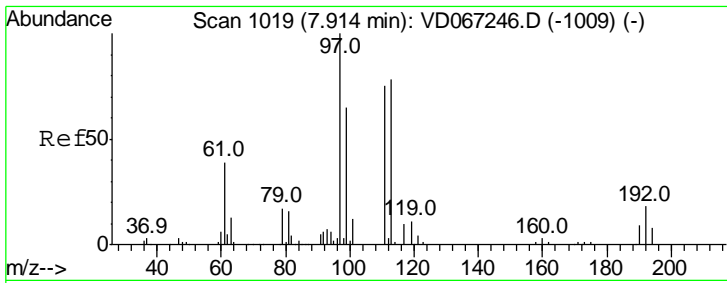
Tgt Ion: 65 Resp: 156895  
 Ion Ratio Lower Upper  
 65 100  
 67 52.3 0.0 103.8



#34  
 1,4-Difluorobenzene  
 Concen: 50.000 ug/l  
 RT: 8.87 min Scan# 1181  
 Delta R.T. 0.00 min  
 Lab File: VD067351.D  
 Acq: 21 Oct 2020 16:49

Tgt Ion: 114 Resp: 479857  
 Ion Ratio Lower Upper  
 114 100  
 63 17.4 0.0 35.0  
 88 16.0 0.0 30.6

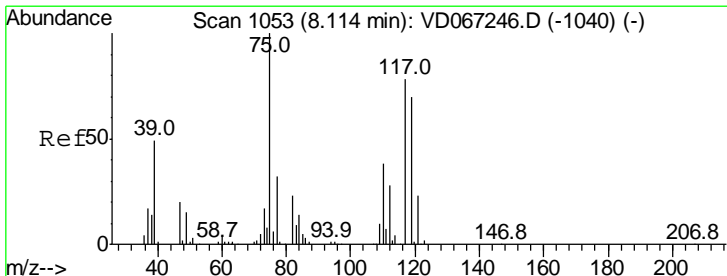
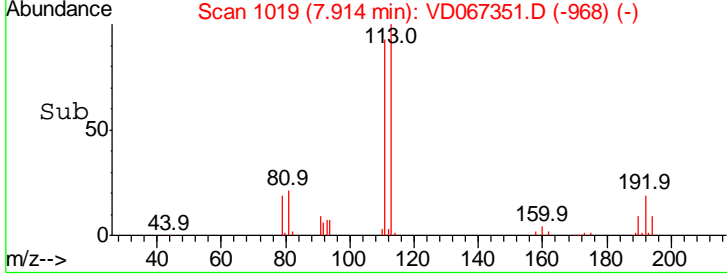
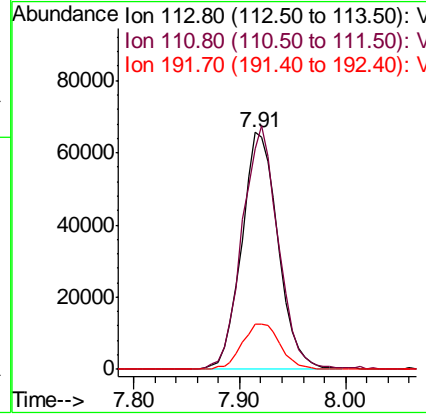
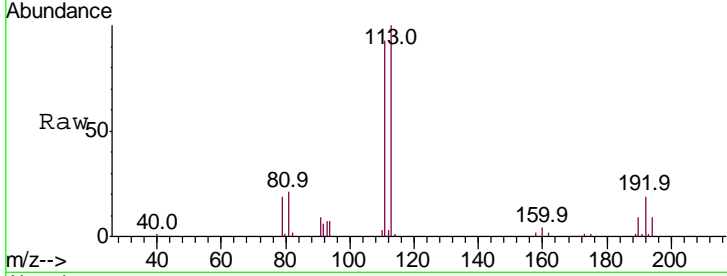




#35  
 Dibromofluoromethane  
 Concen: 49.243 ug/l  
 RT: 7.91 min Scan# 1019  
 Delta R.T. 0.00 min  
 Lab File: VD067351.D  
 Acq: 21 Oct 2020 16:49

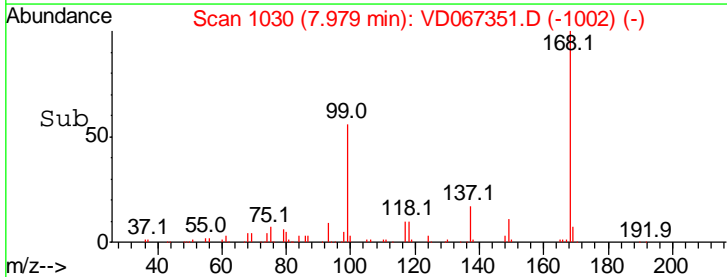
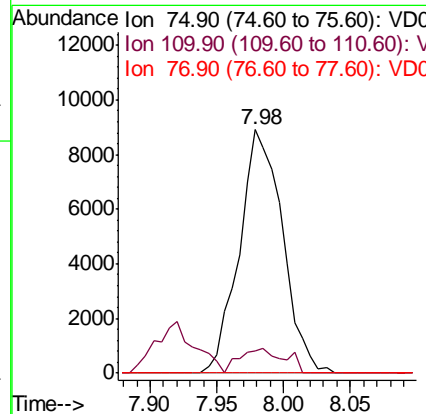
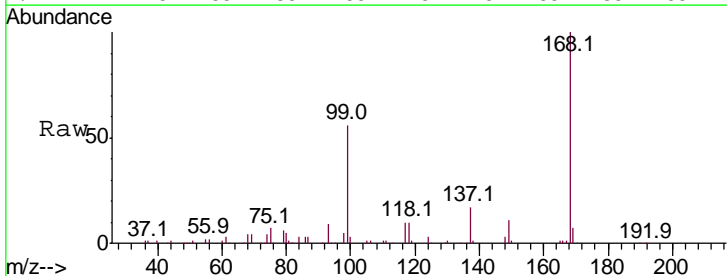
Instrument : MSVOA\_D  
 ClientSampled : 72-11998

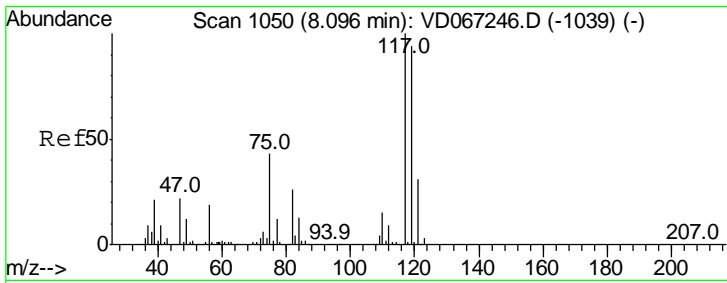
Tgt Ion	Resp	Lower	Upper
113	100		
111	101.3	81.6	122.4
192	20.1	17.0	25.4



#36  
 1,1-Dichloropropene  
 Concen: 4.910 ug/l  
 RT: 7.98 min Scan# 1030  
 Delta R.T. -0.14 min  
 Lab File: VD067351.D  
 Acq: 21 Oct 2020 16:49

Tgt Ion	Resp	Lower	Upper
75	100		
110	10.6	19.6	58.7#
77	0.0	24.6	37.0#

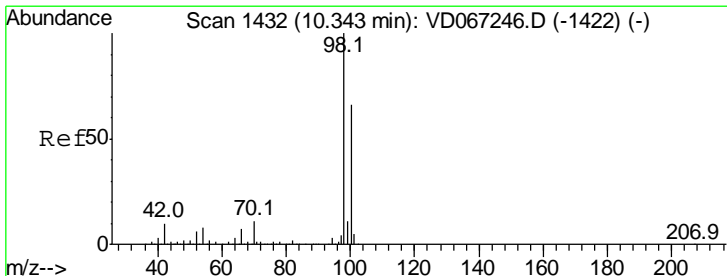
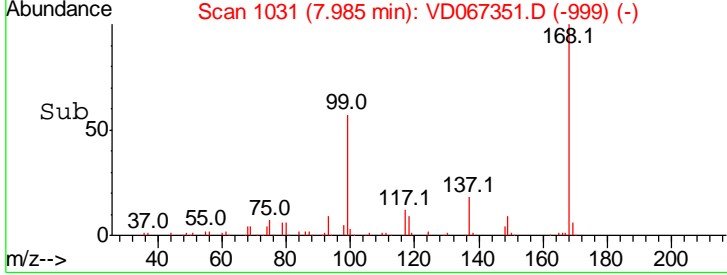
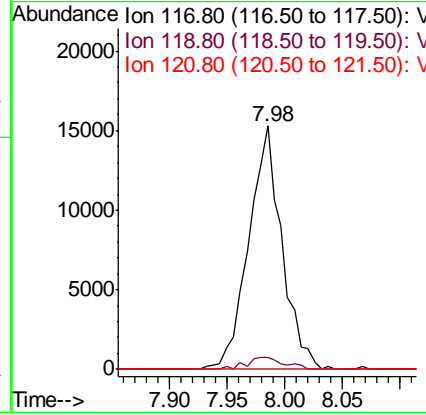
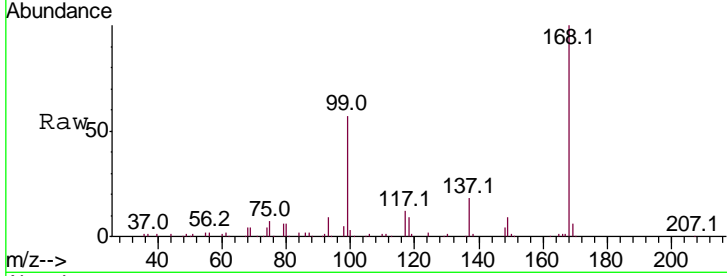




#38  
 Carbon Tetrachloride  
 Concen: 5.854 ug/l  
 RT: 7.98 min Scan# 1031  
 Delta R.T. -0.11 min  
 Lab File: VD067351.D  
 Acq: 21 Oct 2020 16:49

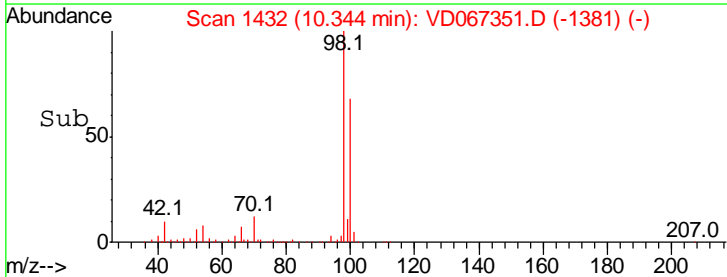
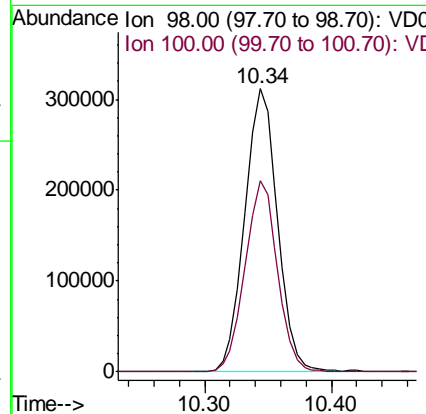
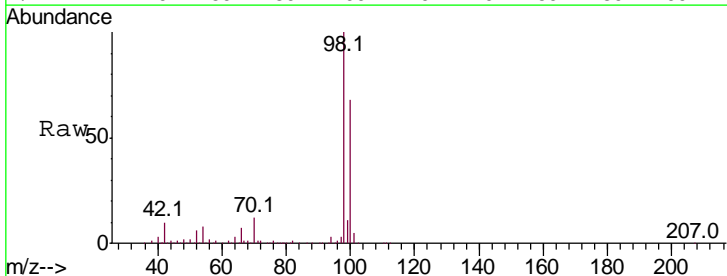
**Instrument :**  
 MSVOA\_D  
**ClientSampled :**  
 72-11998

Tgt Ion	Resp	Lower	Upper
117	100		
119	5.1	75.0	112.4#
121	0.0	24.9	37.3#

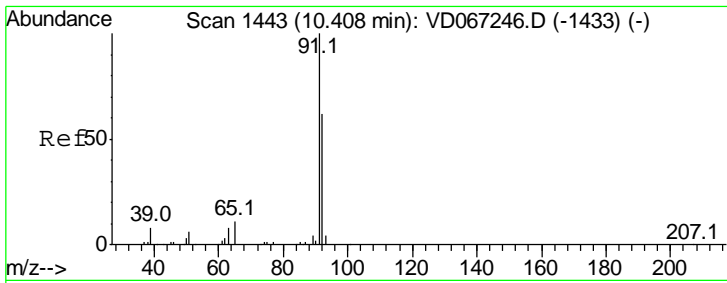


#50  
 Toluene-d8  
 Concen: 48.443 ug/l  
 RT: 10.34 min Scan# 1432  
 Delta R.T. 0.00 min  
 Lab File: VD067351.D  
 Acq: 21 Oct 2020 16:49

Tgt Ion	Resp	Lower	Upper
98	100		
100	66.9	53.1	79.7



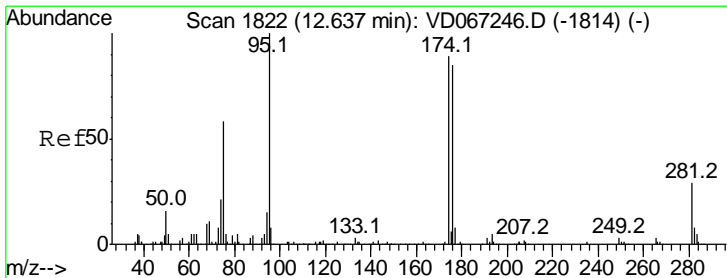
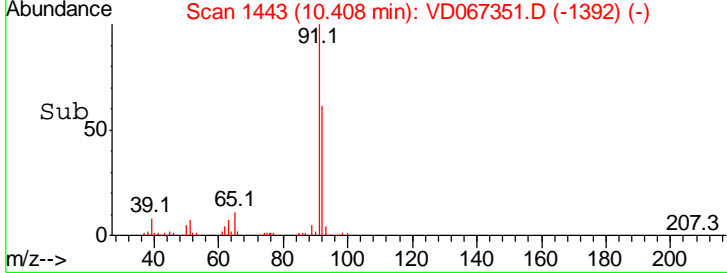
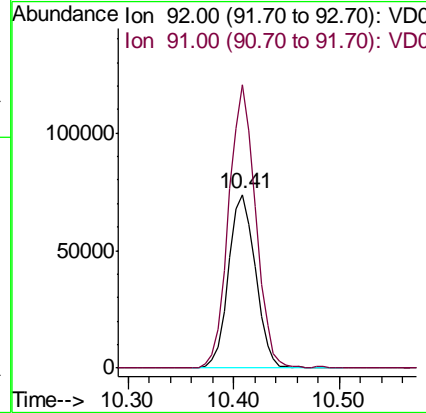
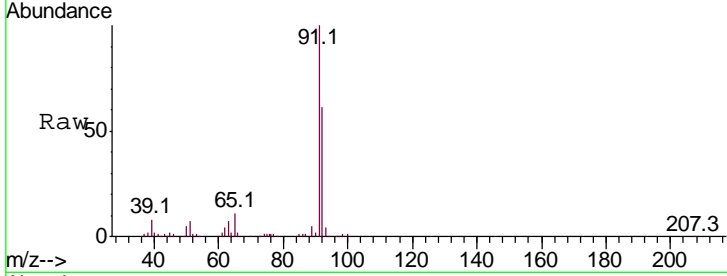




#52  
 Toluene  
 Concen: 17.224 ug/l  
 RT: 10.41 min Scan# 1443  
 Delta R.T. 0.00 min  
 Lab File: VD067351.D  
 Acq: 21 Oct 2020 16:49

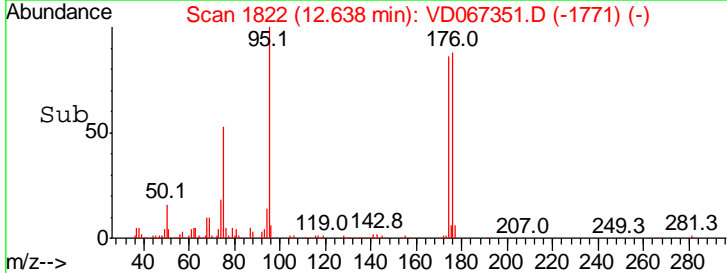
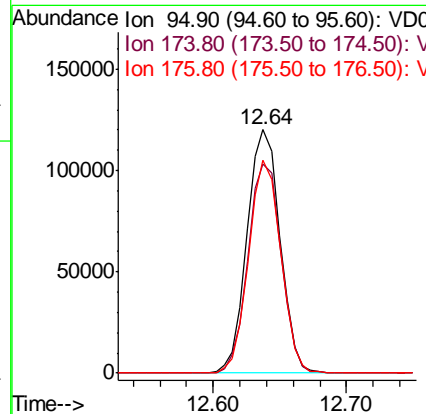
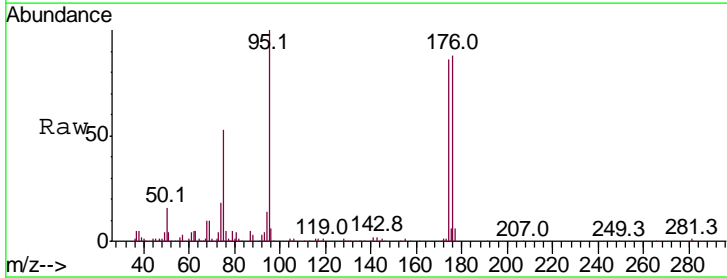
Instrument : MSVOA\_D  
 ClientSampled : 72-11998

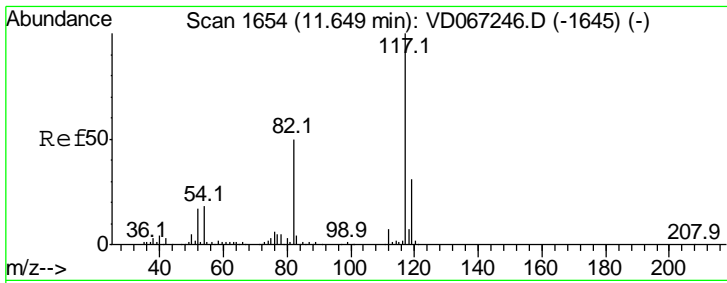
Tgt Ion: 92 Resp: 130892  
 Ion Ratio Lower Upper  
 92 100  
 91 162.3 133.8 200.8



#62  
 4-Bromofluorobenzene  
 Concen: 50.803 ug/l  
 RT: 12.64 min Scan# 1822  
 Delta R.T. 0.00 min  
 Lab File: VD067351.D  
 Acq: 21 Oct 2020 16:49

Tgt Ion: 95 Resp: 204153  
 Ion Ratio Lower Upper  
 95 100  
 174 86.7 0.0 175.2  
 176 85.4 0.0 168.6

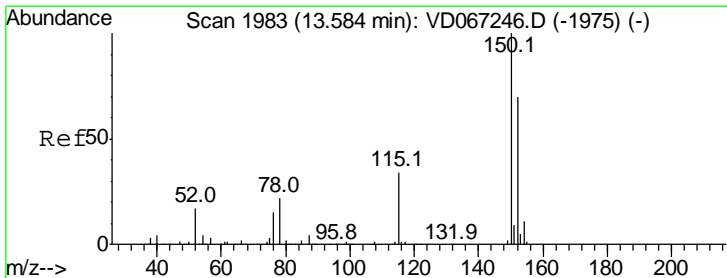
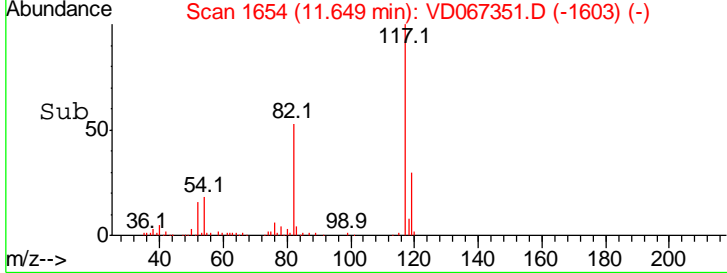
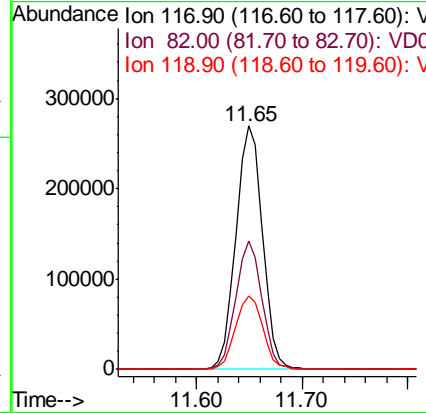
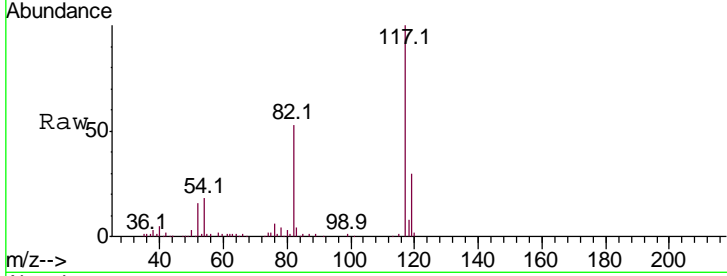




#63  
 Chlorobenzene-d5  
 Concen: 50.000 ug/l  
 RT: 11.65 min Scan# 1654  
 Delta R.T. 0.00 min  
 Lab File: VD067351.D  
 Acq: 21 Oct 2020 16:49

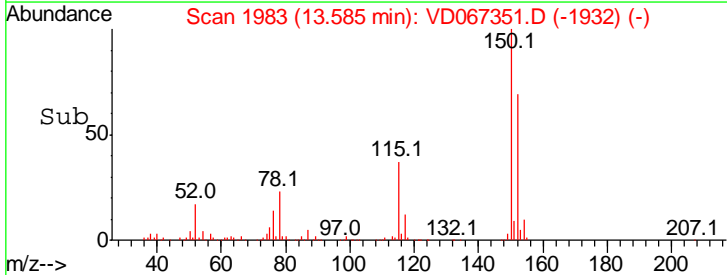
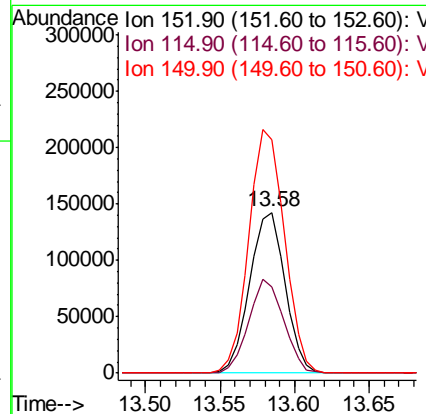
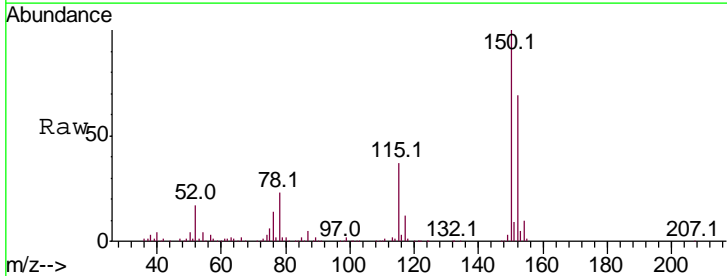
Instrument :  
 MSVOA\_D  
 ClientSampled :  
 72-11998

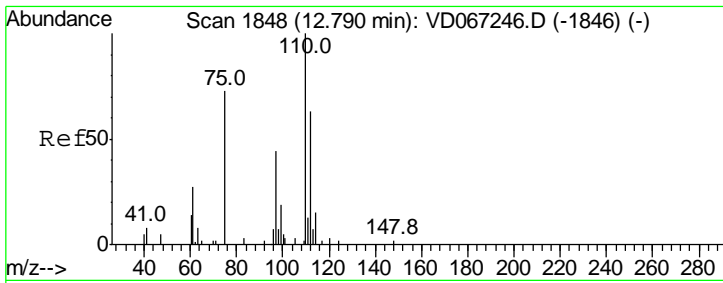
Tgt Ion	Resp	Lower	Upper
117	466621		
82	52.5	39.9	59.9
119	30.3	24.9	37.3



#72  
 1,4-Dichlorobenzene-d4  
 Concen: 50.000 ug/l  
 RT: 13.58 min Scan# 1983  
 Delta R.T. 0.00 min  
 Lab File: VD067351.D  
 Acq: 21 Oct 2020 16:49

Tgt Ion	Resp	Lower	Upper
152	233189		
115	57.7	29.3	87.9
150	152.9	0.0	339.0

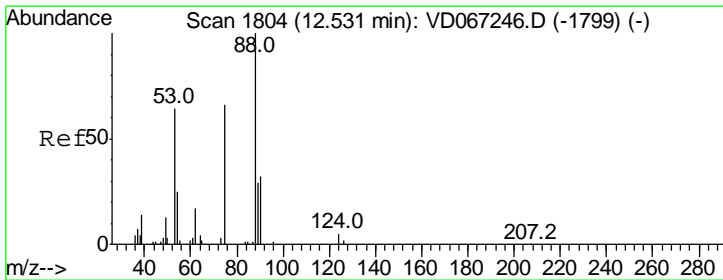
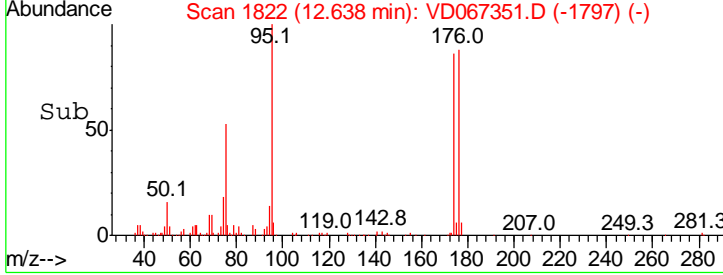
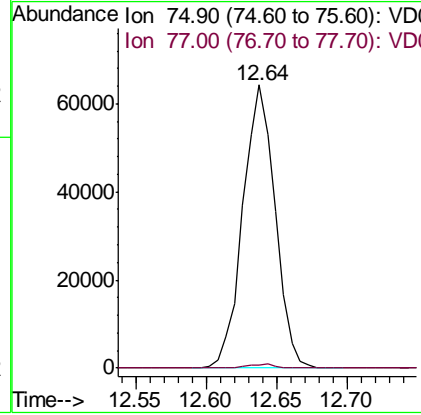
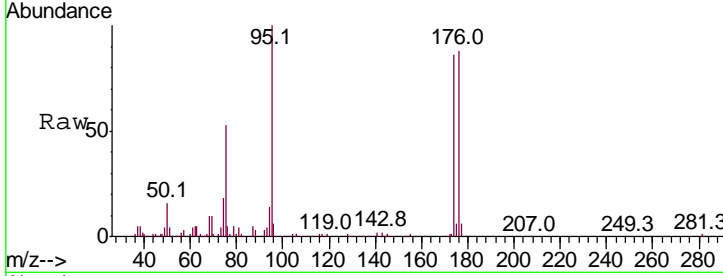




#76  
 1,2,3-Trichloropropane  
 Concen: 63.587 ug/l  
 RT: 12.64 min Scan# 1822  
 Delta R.T. -0.15 min  
 Lab File: VD067351.D  
 Acq: 21 Oct 2020 16:49

Instrument : MSVOA\_D  
 ClientSampled : 72-11998

Tgt Ion	Resp	Lower	Upper
75	102771	0.0	0.0#
77	1.2	0.0	0.0#



#81  
 trans-1,4-Dichloro-2-butene  
 Concen: 144.197 ug/l  
 RT: 12.64 min Scan# 1822  
 Delta R.T. 0.11 min  
 Lab File: VD067351.D  
 Acq: 21 Oct 2020 16:49

Tgt Ion	Resp	Lower	Upper
75	102771	0.0	0.0#
53	0.0	78.5	117.7#
89	0.0	39.9	59.9#

