

Data Path : Z:\VOASRV\HPCHEM1\MSVOA D\DATA\VD102720\
 Data File : VD067408.D
 Acq On : 27 Oct 2020 13:39
 Operator : VA/SY
 Sample : L4523-02
 Misc : 5.00G/5.00ml/MSVOA D/SOIL
 ALS Vial : 7 Sample Multiplier: 1

Instrument :
 MSVOA_D
 ClientSampleId :
 CS-38

Integration Parameters: RTEINT.P
 Integrator: RTE
 Smoothing : ON Filtering: 5
 Sampling : 1 Min Area: 3 % of largest Peak
 Start Thrs: 0.2 Max Peaks: 100
 Stop Thrs : 0 Peak Location: TOP

If leading or trailing edge < 100 prefer < Baseline drop else tangent >
 Peak separation: 5

Method : Z:\VOASRV\HPCHEM1\MSVOA_D\METHOD\82D101320S.M
 Title : SW846 8260

Signal : TIC

peak #	R.T. min	first scan	max scan	last scan	PK TY	peak height	corr. area	corr. % max.	% of total
1	7.203	889	898	907	rVB2	11477	33087	2.08%	0.377%
2	7.920	1010	1020	1025	rBV2	233763	555951	35.00%	6.332%
3	7.985	1025	1031	1042	rVB	397631	891389	56.12%	10.152%
4	8.338	1074	1091	1103	rBV2	177980	450273	28.35%	5.128%
5	8.867	1172	1181	1197	rBV	559282	1136828	71.57%	12.947%
6	10.344	1424	1432	1448	rBV	886853	1588305	100.00%	18.089%
7	10.726	1490	1497	1505	rBV3	31267	56360	3.55%	0.642%
8	11.091	1553	1559	1567	rBV2	25935	44986	2.83%	0.512%
9	11.461	1617	1622	1629	rVB3	15204	26093	1.64%	0.297%
10	11.649	1644	1654	1665	rBV	841026	1435839	90.40%	16.353%
11	12.638	1814	1822	1834	rBV	704541	1125092	70.84%	12.814%
12	12.967	1871	1878	1883	rBV2	14517	24049	1.51%	0.274%
13	13.579	1975	1982	1990	rBV	880385	1412167	88.91%	16.083%

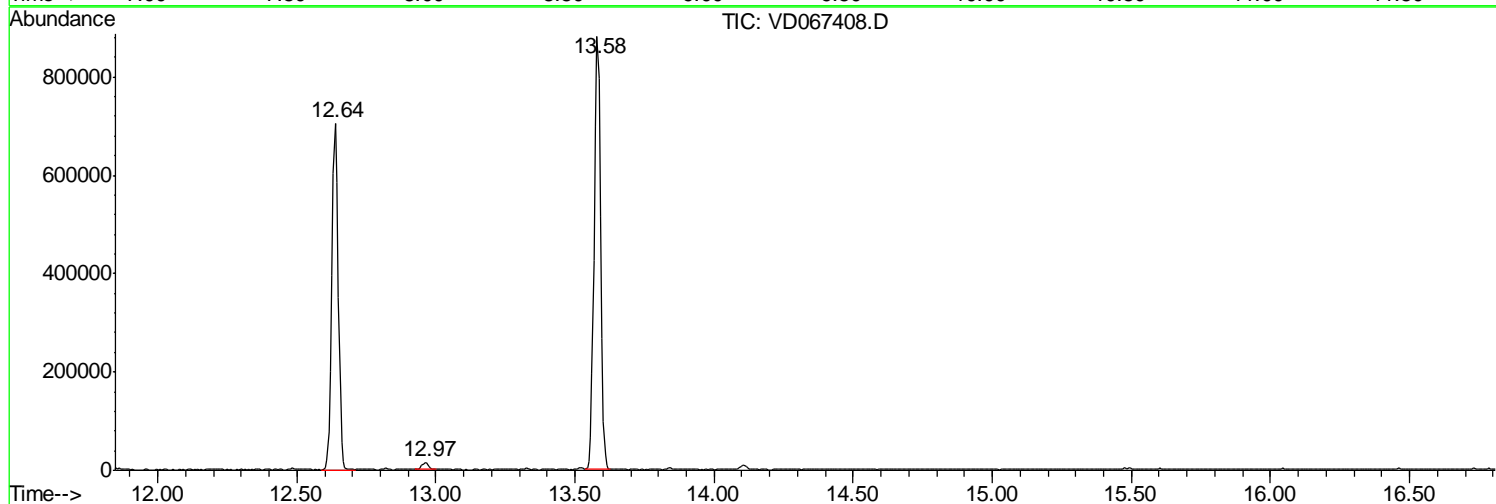
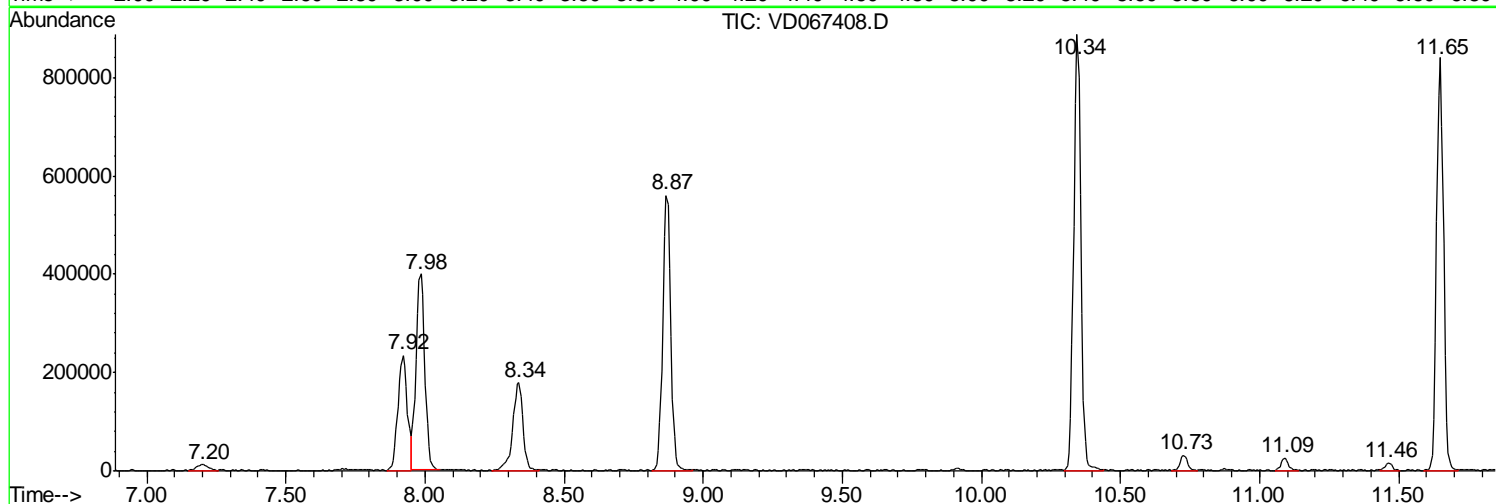
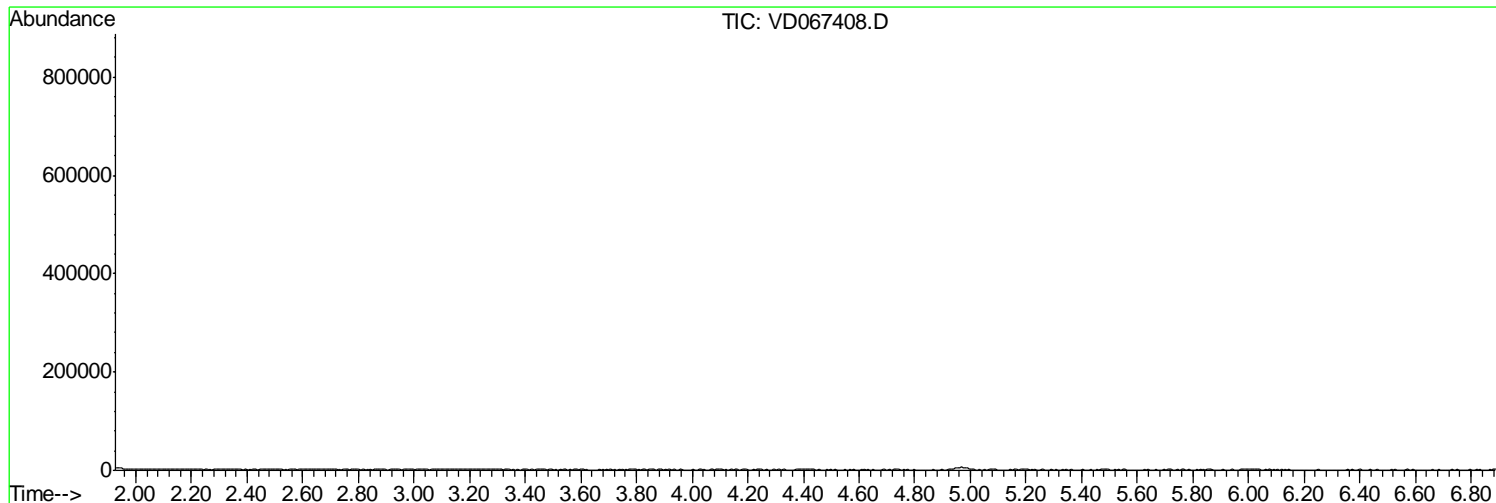
Sum of corrected areas: 8780419

Data Path : Z:\VOASRV\HPCHEM1\MSVOA D\DATA\VD102720\
Data File : VD067408.D
Acq On : 27 Oct 2020 13:39
Operator : VA/SY
Sample : L4523-02
Misc : 5.00G/5.00ml/MSVOA D/SOIL
ALS Vial : 7 Sample Multiplier: 1

Instrument :
MSVOA_D
ClientSampleId :
CS-38

Quant Method : Z:\VOASRV\HPCHEM1\MSVOA_D\METHOD\82D101320S.M
Quant Title : SW846 8260

TIC Library : C:\DATABASE\NIST11.L
TIC Integration Parameters: LSCINT.P



Data Path : Z:\VOASRV\HPCHEM1\MSVOA_D\DATA\VD102720\
Data File : VD067408.D
Acq On : 27 Oct 2020 13:39
Operator : VA/SY
Sample : L4523-02
Misc : 5.00G/5.00ml/MSVOA_D/SOIL
ALS Vial : 7 Sample Multiplier: 1

Instrument :
MSVOA_D
ClientSampleId :
CS-38

Quant Method : Z:\VOASRV\HPCHEM1\MSVOA_D\METHOD\82D101320S.M
Quant Title : SW846 8260

TIC Library : C:\DATABASE\NIST11.L
TIC Integration Parameters: LSCINT.P

No Library Search Compounds Detected

Data Path : Z:\VOASRV\HPCHEM1\MSVOA_D\DATA\VD102720\
Data File : VD067408.D
Acq On : 27 Oct 2020 13:39
Operator : VA/SY
Sample : L4523-02
Misc : 5.00G/5.00ml/MSVOA_D/SOIL
ALS Vial : 7 Sample Multiplier: 1

Instrument :
MSVOA_D
ClientSampleId :
CS-38

Quant Method : Z:\VOASRV\HPCHEM1\MSVOA_D\METHOD\82D101320S.M
Quant Title : SW846 8260

TIC Library : C:\DATABASE\NIST11.L
TIC Integration Parameters: LSCINT.P

TIC Top Hit name	RT	EstConc	Units	Response	--Internal Standard--			
					#	RT	Resp	Conc
