

Data Path : Z:\VOASRV\HPCHEM1\MSVOA D\DATA\VD110220\  
 Data File : VD067490.D  
 Acq On : 02 Nov 2020 14:37  
 Operator : VA/SY  
 Sample : L4540-01  
 Misc : 6.30G/5.00ml/MSVOA D/SOIL  
 ALS Vial : 9 Sample Multiplier: 1

Instrument :  
 MSVOA\_D  
 ClientSampleID :  
 341

Integration Parameters: RTEINT.P  
 Integrator: RTE  
 Smoothing : ON Filtering: 5  
 Sampling : 1 Min Area: 3 % of largest Peak  
 Start Thrs: 0.2 Max Peaks: 100  
 Stop Thrs : 0 Peak Location: TOP

If leading or trailing edge < 100 prefer < Baseline drop else tangent >  
 Peak separation: 5

Method : Z:\VOASRV\HPCHEM1\MSVOA\_D\METHOD\82D101320S.M  
 Title : SW846 8260

Signal : TIC

peak #	R.T. min	first scan	max scan	last scan	PK TY	peak height	corr. area	corr. % max.	% of total
1	7.920	1010	1020	1025	rBV	223829	549038	34.72%	6.333%
2	7.985	1025	1031	1045	rVB	410747	939069	59.38%	10.832%
3	8.338	1077	1091	1101	rBV	189327	423910	26.80%	4.890%
4	8.873	1172	1182	1194	rBV	560077	1148842	72.64%	13.251%
5	10.344	1423	1432	1448	rBV	859265	1581493	100.00%	18.241%
6	11.649	1647	1654	1669	rVB	829794	1434037	90.68%	16.541%
7	12.638	1815	1822	1831	rBV	678398	1133231	71.66%	13.071%
8	13.585	1975	1983	1991	rBV	870260	1460169	92.33%	16.842%

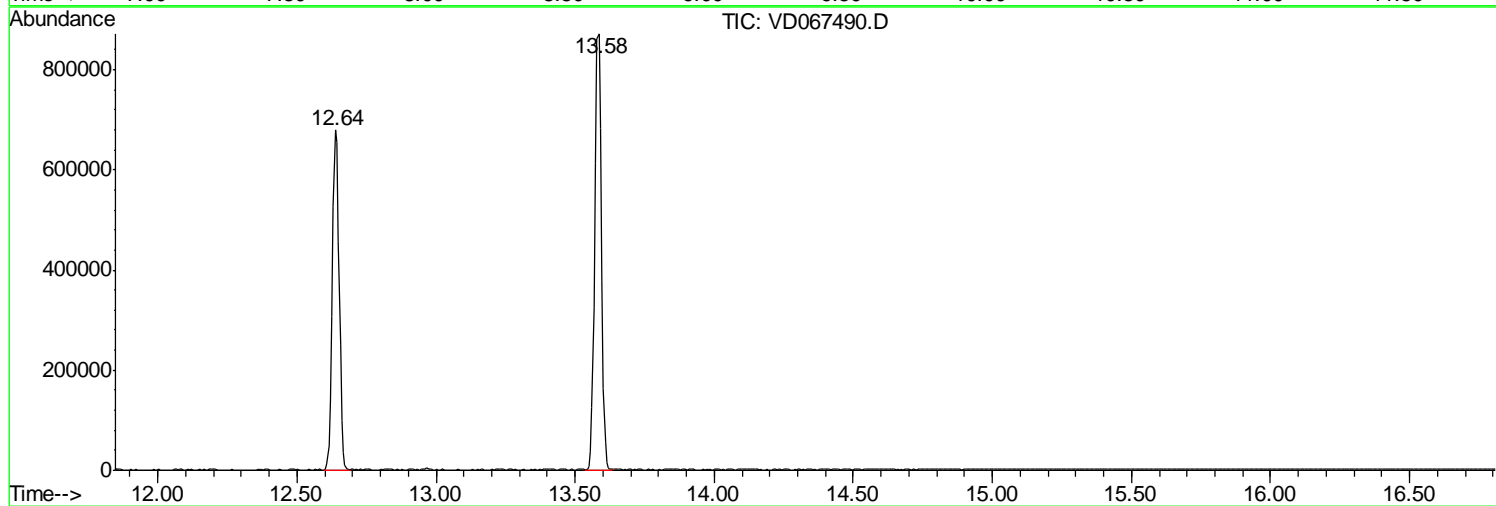
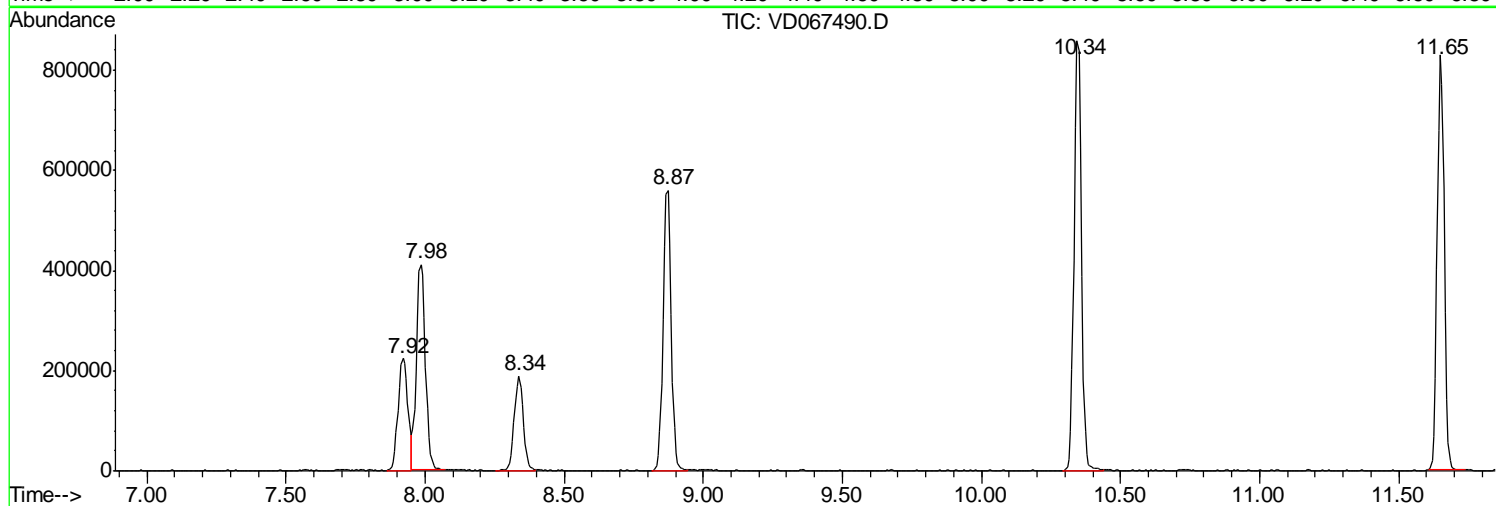
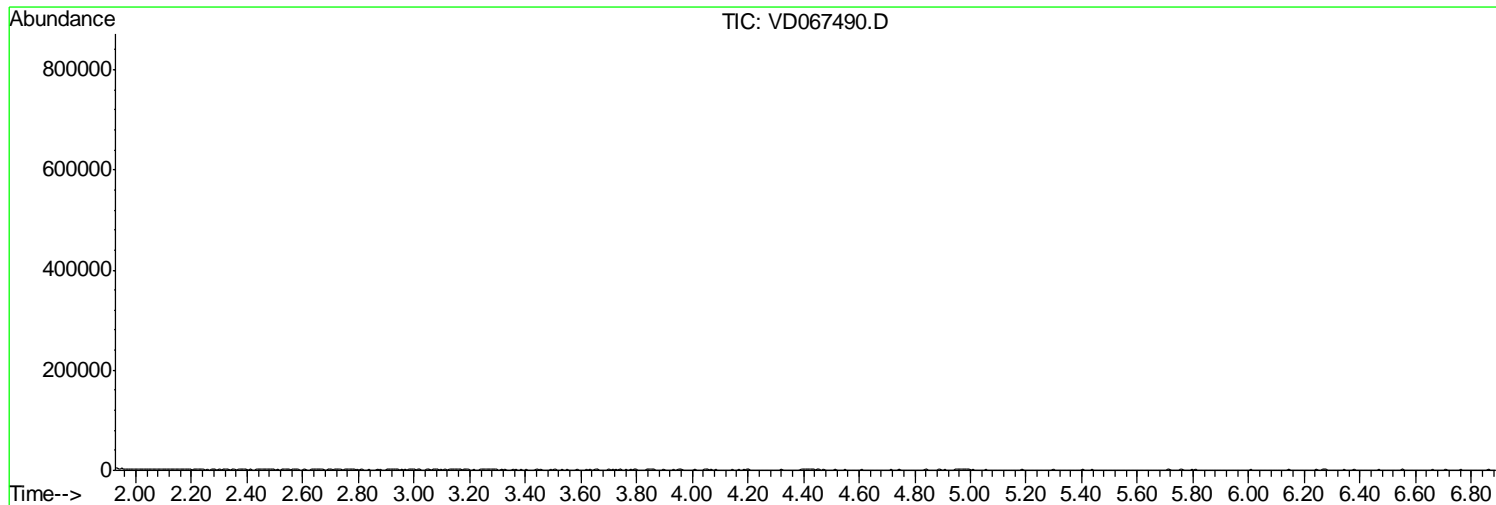
Sum of corrected areas: 8669789

Data Path : Z:\VOASRV\HPCHEM1\MSVOA D\DATA\VD110220\  
Data File : VD067490.D  
Acq On : 02 Nov 2020 14:37  
Operator : VA/SY  
Sample : L4540-01  
Misc : 6.30G/5.00ml/MSVOA D/SOIL  
ALS Vial : 9 Sample Multiplier: 1

Instrument :  
MSVOA\_D  
ClientSampled :  
341

Quant Method : Z:\VOASRV\HPCHEM1\MSVOA\_D\METHOD\82D101320S.M  
Quant Title : SW846 8260

TIC Library : C:\DATABASE\NIST11.L  
TIC Integration Parameters: LSCINT.P



Data Path : Z:\VOASRV\HPCHEM1\MSVOA\_D\DATA\VD110220\  
Data File : VD067490.D  
Acq On : 02 Nov 2020 14:37  
Operator : VA/SY  
Sample : L4540-01  
Misc : 6.30G/5.00ml/MSVOA\_D/SOIL  
ALS Vial : 9 Sample Multiplier: 1

Instrument :  
MSVOA\_D  
ClientSampleId :  
341

Quant Method : Z:\VOASRV\HPCHEM1\MSVOA\_D\METHOD\82D101320S.M  
Quant Title : SW846 8260

TIC Library : C:\DATABASE\NIST11.L  
TIC Integration Parameters: LSCINT.P

No Library Search Compounds Detected

\*\*\*\*\*

Data Path : Z:\VOASRV\HPCHEM1\MSVOA\_D\DATA\VD110220\  
Data File : VD067490.D  
Acq On : 02 Nov 2020 14:37  
Operator : VA/SY  
Sample : L4540-01  
Misc : 6.30G/5.00ml/MSVOA\_D/SOIL  
ALS Vial : 9 Sample Multiplier: 1

Instrument :  
MSVOA\_D  
ClientSampleId :  
341

Quant Method : Z:\VOASRV\HPCHEM1\MSVOA\_D\METHOD\82D101320S.M  
Quant Title : SW846 8260

TIC Library : C:\DATABASE\NIST11.L  
TIC Integration Parameters: LSCINT.P

TIC Top Hit name	RT	EstConc	Units	Response	--Internal Standard--			
					#	RT	Resp	Conc

---