

Data Path : Z:\VOASRV\HPCHEM1\MSVOA D\DATA\VD110220\
 Data File : VD067497.D
 Acq On : 02 Nov 2020 17:47
 Operator : VA/SY
 Sample : L4531-02
 Misc : 5.03G/5.00ml/MSVOA D/SOIL
 ALS Vial : 15 Sample Multiplier: 1

Instrument :
 MSVOA_D
 ClientSampleId :
 TP-1916-GC-GRAB-B

Integration Parameters: RTEINT.P
 Integrator: RTE
 Smoothing : ON Filtering: 5
 Sampling : 1 Min Area: 3 % of largest Peak
 Start Thrs: 0.2 Max Peaks: 100
 Stop Thrs : 0 Peak Location: TOP

If leading or trailing edge < 100 prefer < Baseline drop else tangent >
 Peak separation: 5

Method : Z:\VOASRV\HPCHEM1\MSVOA_D\METHOD\82D101320S.M
 Title : SW846 8260

Signal : TIC

peak #	R.T. min	first scan	max scan	last scan	PK TY	peak height	corr. area	corr. % max.	% of total
1	4.973	513	519	527	rVB2	7327	18245	1.22%	0.215%
2	7.202	884	898	908	rBV	15997	45349	3.03%	0.535%
3	7.926	1008	1021	1025	rBV	210273	513351	34.29%	6.058%
4	7.985	1025	1031	1043	rVB	382869	867374	57.94%	10.235%
5	8.332	1073	1090	1101	rBV3	164636	465642	31.10%	5.495%
6	8.873	1173	1182	1196	rBV	526049	1072238	71.62%	12.653%
7	10.343	1424	1432	1443	rBV	817882	1497147	100.00%	17.667%
8	10.732	1492	1498	1506	rVB2	14191	25481	1.70%	0.301%
9	11.091	1553	1559	1568	rVB2	21066	36336	2.43%	0.429%
10	11.461	1617	1622	1629	rVB2	23880	42549	2.84%	0.502%
11	11.649	1647	1654	1668	rVB	787849	1384581	92.48%	16.339%
12	12.637	1814	1822	1838	rVB	666585	1113564	74.38%	13.140%
13	12.961	1872	1877	1883	rBV4	11272	17818	1.19%	0.210%
14	13.584	1975	1983	1990	rBV	827550	1374616	91.82%	16.221%

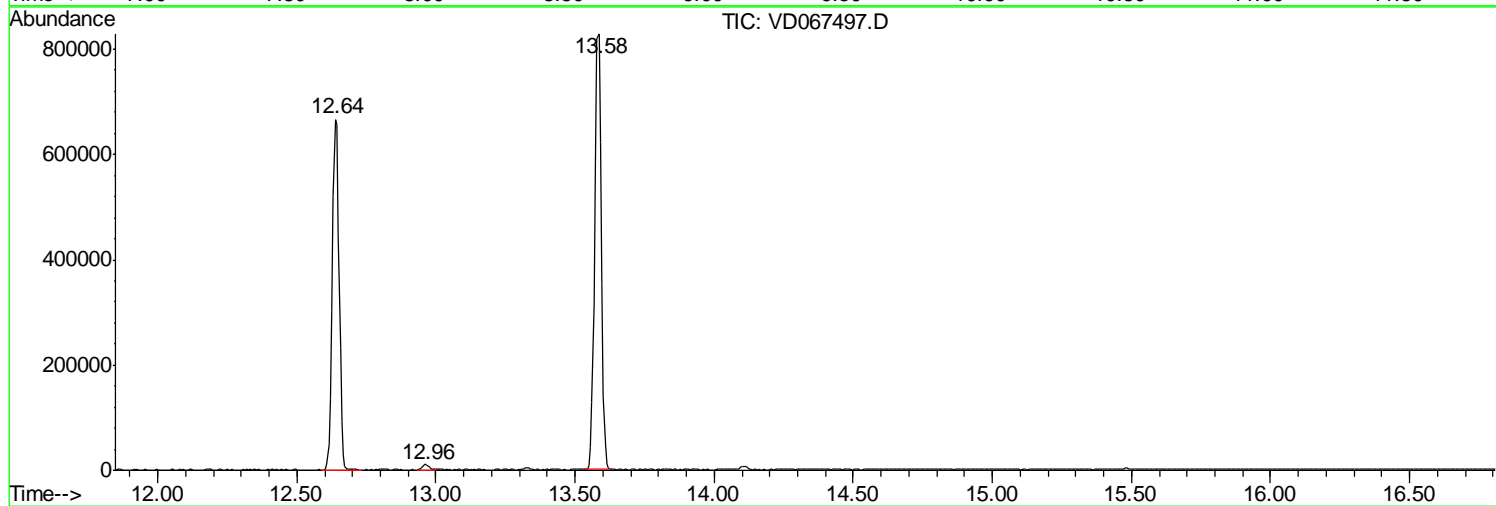
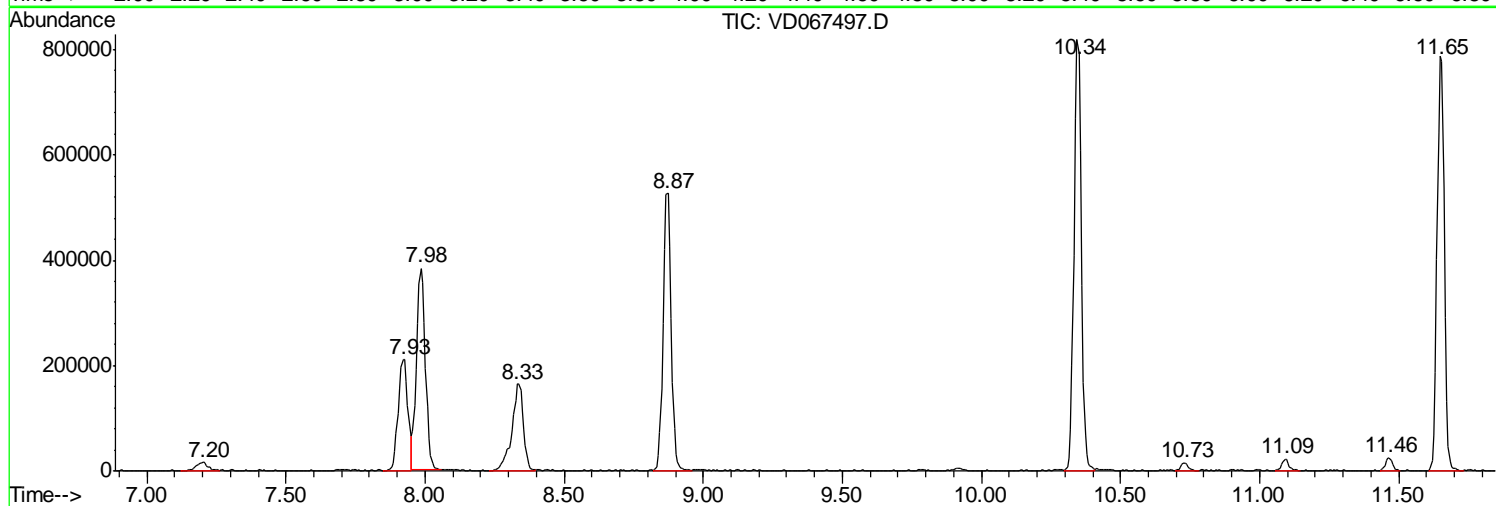
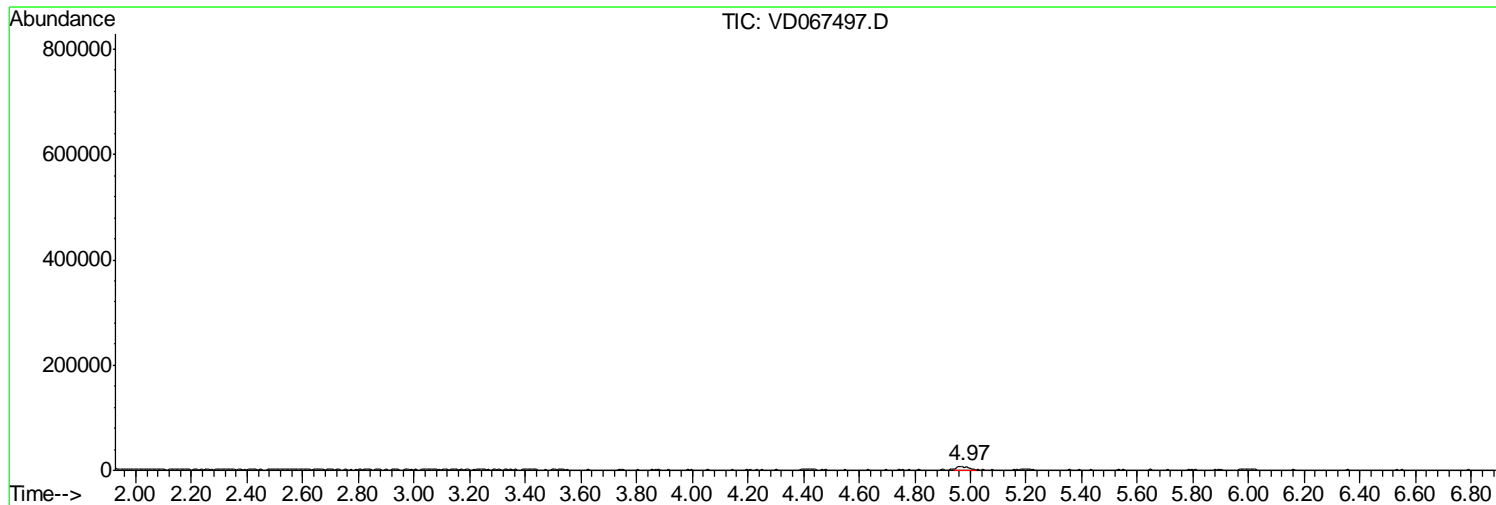
Sum of corrected areas: 8474291

Data Path : Z:\VOASRV\HPCHEM1\MSVOA D\DATA\VD110220\
Data File : VD067497.D
Acq On : 02 Nov 2020 17:47
Operator : VA/SY
Sample : L4531-02
Misc : 5.03G/5.00ml/MSVOA D/SOIL
ALS Vial : 15 Sample Multiplier: 1

Instrument :
MSVOA_D
ClientSampleId :
TP-1916-GC-GRAB-B

Quant Method : Z:\VOASRV\HPCHEM1\MSVOA_D\METHOD\82D101320S.M
Quant Title : SW846 8260

TIC Library : C:\DATABASE\NIST11.L
TIC Integration Parameters: LSCINT.P



Data Path : Z:\VOASRV\HPCHEM1\MSVOA_D\DATA\VD110220\
Data File : VD067497.D
Acq On : 02 Nov 2020 17:47
Operator : VA/SY
Sample : L4531-02
Misc : 5.03G/5.00ml/MSVOA_D/SOIL
ALS Vial : 15 Sample Multiplier: 1

Instrument :
MSVOA_D
ClientSampleId :
TP-1916-GC-GRAB-B

Quant Method : Z:\VOASRV\HPCHEM1\MSVOA_D\METHOD\82D101320S.M
Quant Title : SW846 8260

TIC Library : C:\DATABASE\NIST11.L
TIC Integration Parameters: LSCINT.P

No Library Search Compounds Detected

Data Path : Z:\VOASRV\HPCHEM1\MSVOA_D\DATA\VD110220\
Data File : VD067497.D
Acq On : 02 Nov 2020 17:47
Operator : VA/SY
Sample : L4531-02
Misc : 5.03G/5.00ml/MSVOA_D/SOIL
ALS Vial : 15 Sample Multiplier: 1

Instrument :
MSVOA_D
ClientSampleId :
TP-1916-GC-GRAB-B

Quant Method : Z:\VOASRV\HPCHEM1\MSVOA_D\METHOD\82D101320S.M
Quant Title : SW846 8260

TIC Library : C:\DATABASE\NIST11.L
TIC Integration Parameters: LSCINT.P

TIC Top Hit name	RT	EstConc	Units	Response	--Internal Standard--			
					#	RT	Resp	Conc
