

Data Path : Z:\VOASRV\HPCHEM1\MSVOA D\DATA\VD110920\
 Data File : VD067567.D
 Acq On : 09 Nov 2020 15:50
 Operator : VA/SY
 Sample : L4658-03
 Misc : 5.08G/5.00ml/MSVOA D/SOIL
 ALS Vial : 13 Sample Multiplier: 1

Instrument :
 MSVOA_D
 ClientSampleId :
 361-CL

Quant Time: Nov 10 01:03:14 2020
 Quant Method : Z:\VOASRV\HPCHEM1\MSVOA_D\METHOD\82D110320S.M
 Quant Title : SW846 8260
 QLast Update : Wed Nov 04 00:56:28 2020
 Response via : Initial Calibration

Internal Standards	R.T.	QIon	Response	Conc	Units	Dev(Min)
1) Pentafluorobenzene	7.98	168	25514	50.00	ug/l	0.00
34) 1,4-Difluorobenzene	8.87	114	39570	50.00	ug/l	0.00
63) Chlorobenzene-d5	11.65	117	43386	50.00	ug/l	0.00
72) 1,4-Dichlorobenzene-d4	13.58	152	19874	50.00	ug/l	0.00

System Monitoring Compounds

33) 1,2-Dichloroethane-d4	8.34	65	17468	78.30	ug/l	0.00
Spiked Amount	50.000		Recovery	= 156.60%		
35) Dibromofluoromethane	7.92	113	13999	58.72	ug/l	0.00
Spiked Amount	50.000		Recovery	= 117.44%		
50) Toluene-d8	10.34	98	44850	53.53	ug/l	0.00
Spiked Amount	50.000		Recovery	= 107.06%		
62) 4-Bromofluorobenzene	12.63	95	16795	58.06	ug/l	0.00
Spiked Amount	50.000		Recovery	= 116.12%		

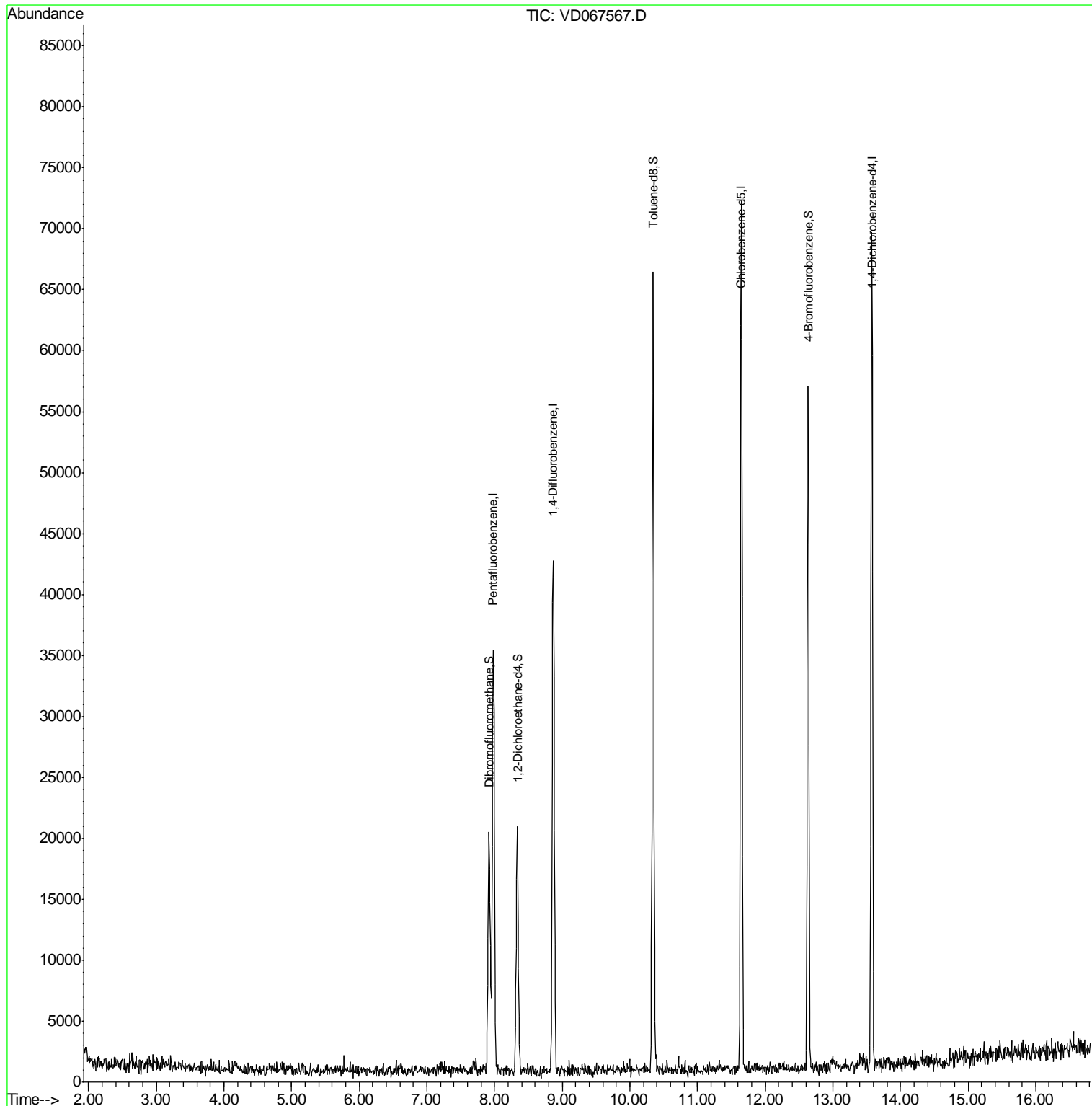
Target Compounds Qvalue

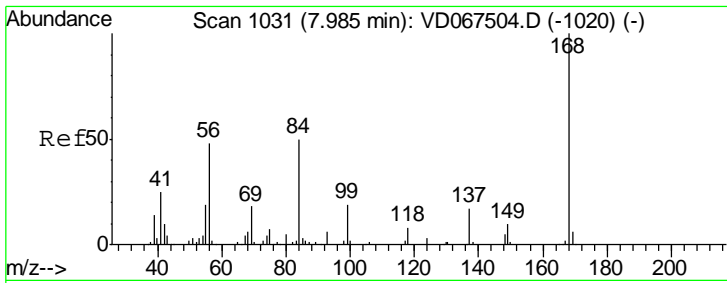
(#) = qualifier out of range (m) = manual integration (+) = signals summed

Data Path : Z:\VOASRV\HPCHEM1\MSVOA D\DATA\VD110920\
 Data File : VD067567.D
 Acq On : 09 Nov 2020 15:50
 Operator : VA/SY
 Sample : L4658-03
 Misc : 5.08G/5.00ml/MSVOA D/SOIL
 ALS Vial : 13 Sample Multiplier: 1

Instrument :
 MSVOA_D
 ClientSampled :
 361-CL

Quant Time: Nov 10 01:03:14 2020
 Quant Method : Z:\VOASRV\HPCHEM1\MSVOA_D\METHOD\82D110320S.M
 Quant Title : SW846 8260
 QLast Update : Wed Nov 04 00:56:28 2020
 Response via : Initial Calibration

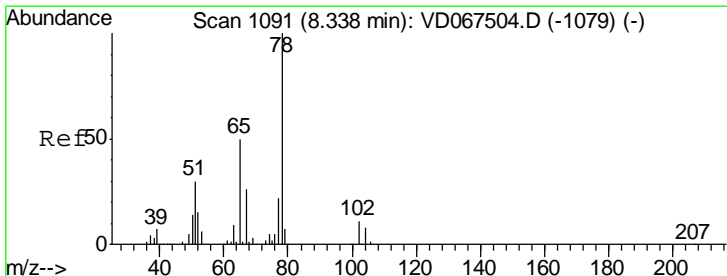
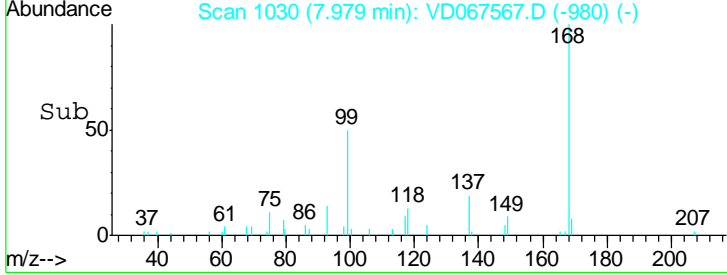
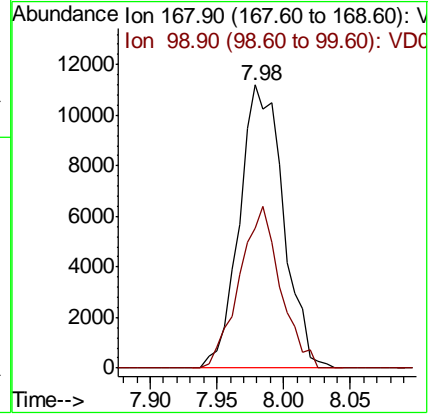
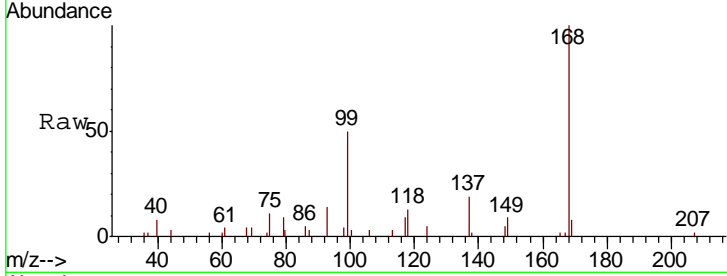




#1
 Pentafluorobenzene
 Concen: 50.000 ug/l
 RT: 7.98 min Scan# 1030
 Delta R.T. -0.01 min
 Lab File: VD067567.D
 Acq: 09 Nov 2020 15:50

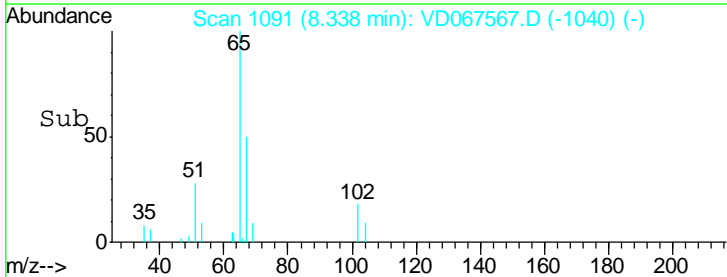
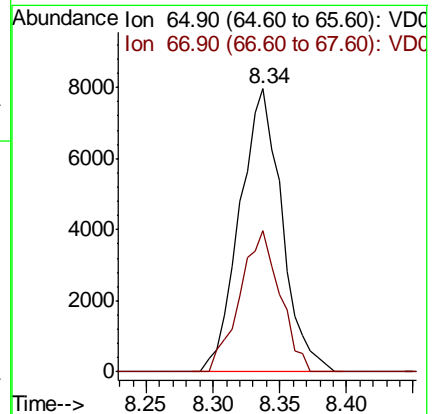
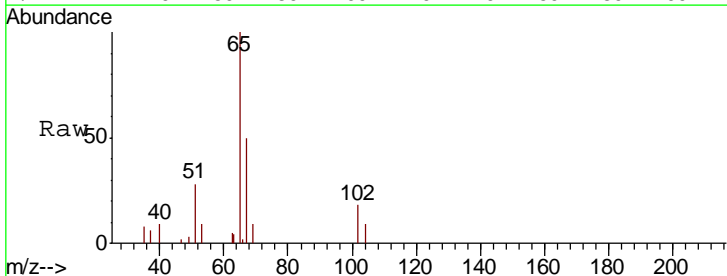
Instrument :
 MSVOA_D
 ClientSampleID :
 361-CL

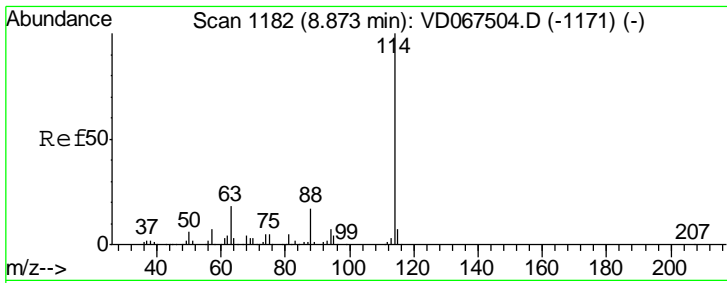
Tgt Ion	Resp	Lower	Upper
168	100		
99	49.6	45.0	67.6



#33
 1,2-Dichloroethane-d4
 Concen: 78.300 ug/l
 RT: 8.34 min Scan# 1091
 Delta R.T. -0.00 min
 Lab File: VD067567.D
 Acq: 09 Nov 2020 15:50

Tgt Ion	Resp	Lower	Upper
65	100		
67	47.5	0.0	99.4

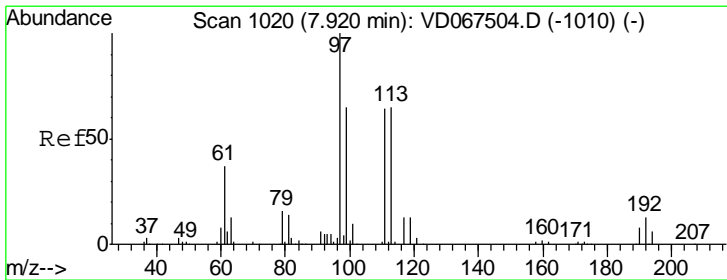
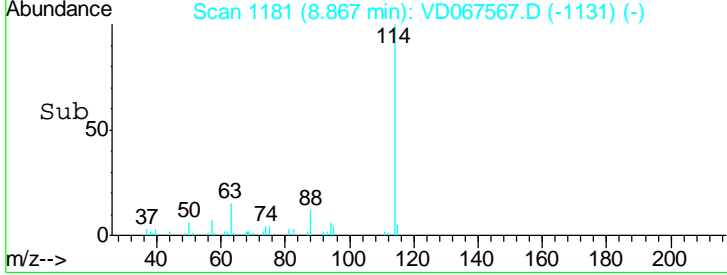
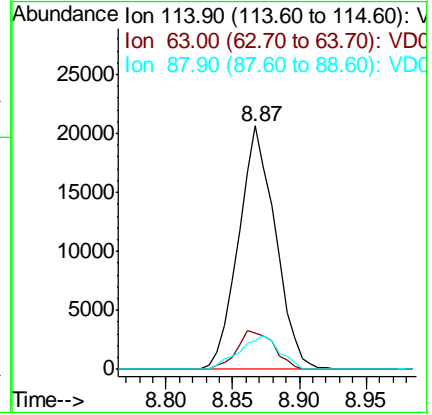
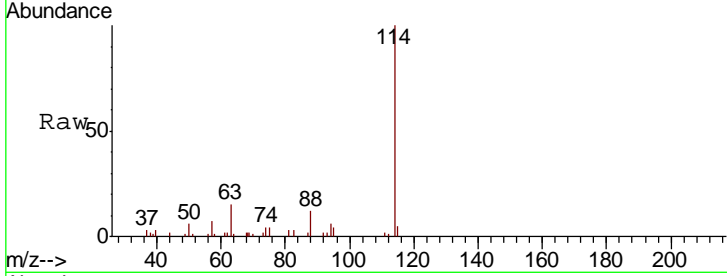




#34
 1,4-Difluorobenzene
 Concen: 50.000 ug/l
 RT: 8.87 min Scan# 1181
 Delta R.T. -0.01 min
 Lab File: VD067567.D
 Acq: 09 Nov 2020 15:50

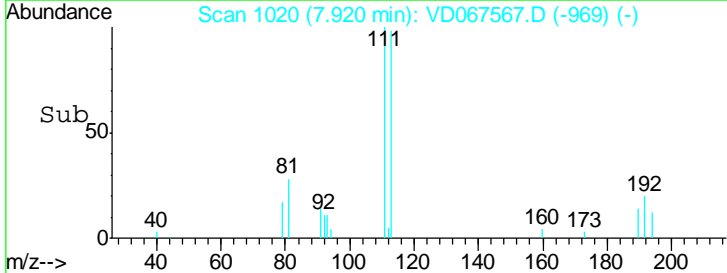
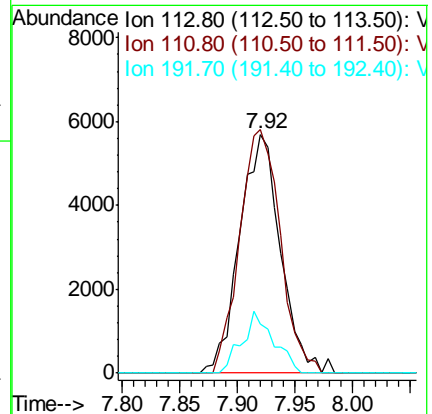
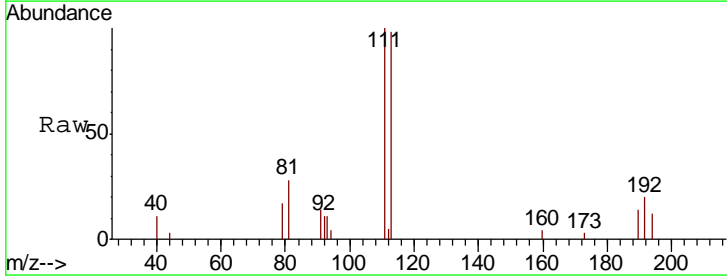
Instrument :
 MSVOA_D
 ClientSampled :
 361-CL

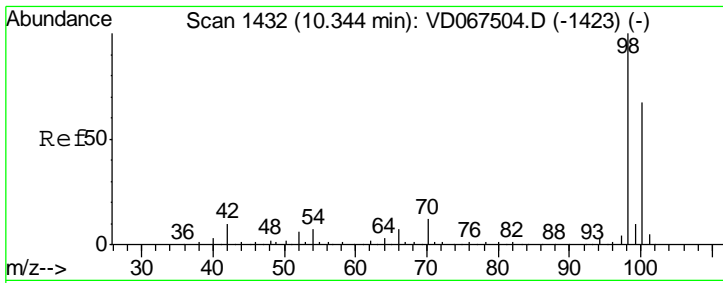
Tgt Ion	Resp	Lower	Upper
114	39570		
63	15.0	0.0	35.0
88	11.7	0.0	33.0



#35
 Dibromofluoromethane
 Concen: 58.719 ug/l
 RT: 7.92 min Scan# 1020
 Delta R.T. -0.00 min
 Lab File: VD067567.D
 Acq: 09 Nov 2020 15:50

Tgt Ion	Resp	Lower	Upper
113	13999		
111	101.1	80.0	120.0
192	20.2	16.3	24.5

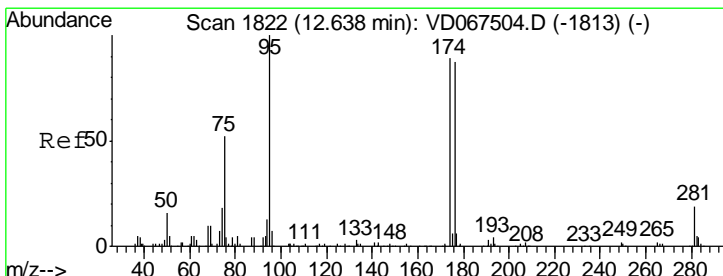
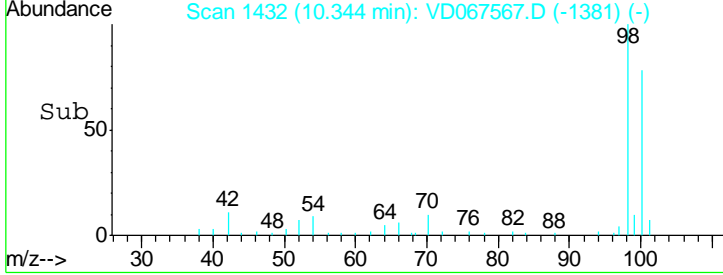
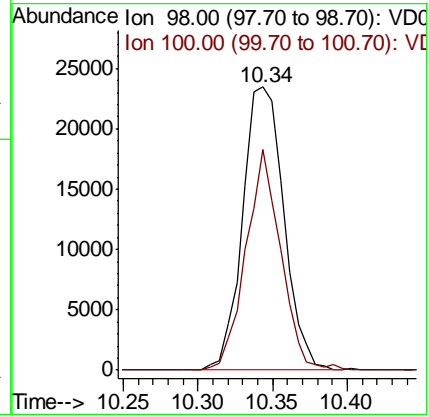
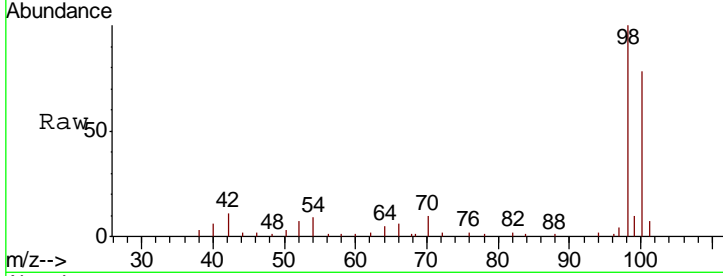




#50
 Toluene-d8
 Concen: 53.532 ug/l
 RT: 10.34 min Scan# 1432
 Delta R.T. -0.00 min
 Lab File: VD067567.D
 Acq: 09 Nov 2020 15:50

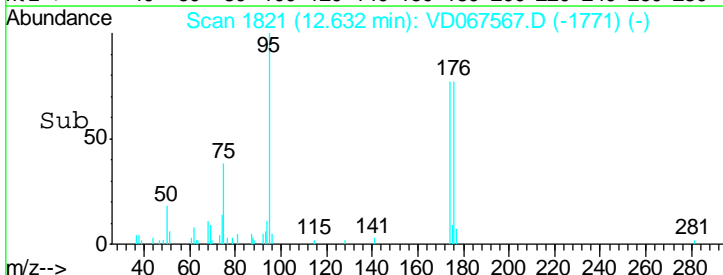
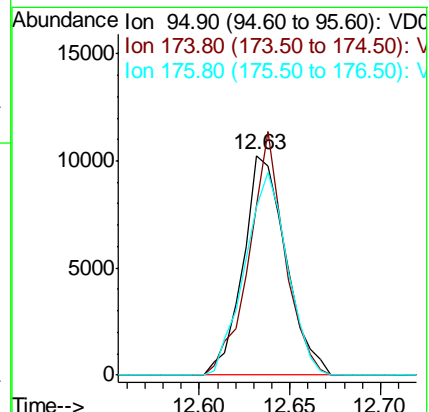
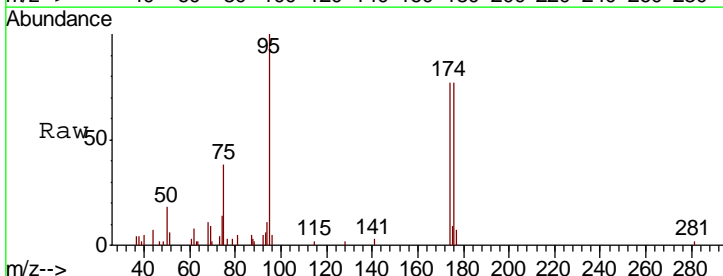
Instrument : MSVOA_D
 ClientSampled : 361-CL

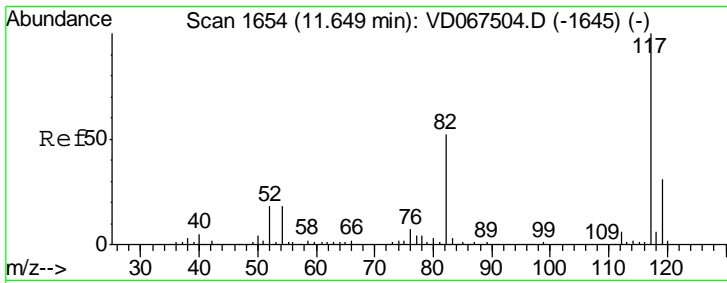
Tgt Ion	Resp	Lower	Upper
98	44850		
98	100		
100	66.2	53.0	79.6



#62
 4-Bromofluorobenzene
 Concen: 58.063 ug/l
 RT: 12.63 min Scan# 1821
 Delta R.T. -0.01 min
 Lab File: VD067567.D
 Acq: 09 Nov 2020 15:50

Tgt Ion	Resp	Lower	Upper
95	16795		
95	100		
174	92.4	0.0	177.8
176	91.7	0.0	172.0

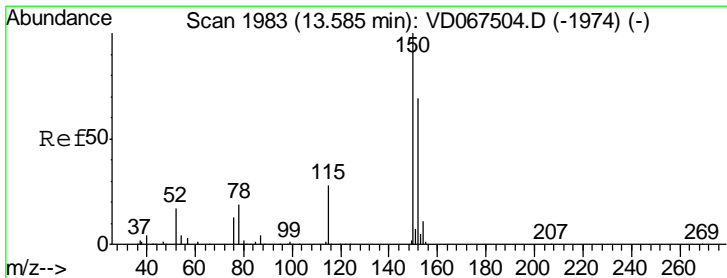
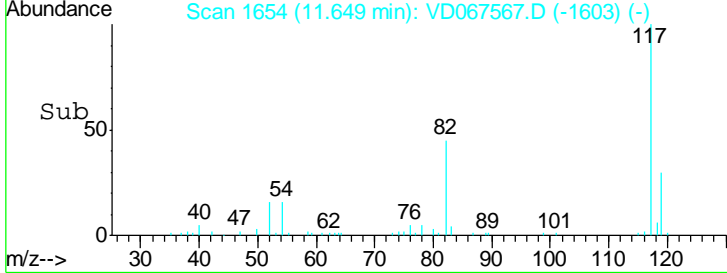
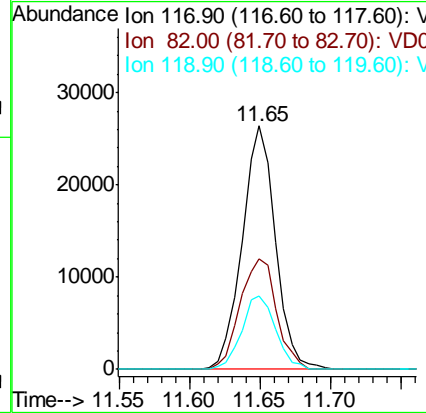
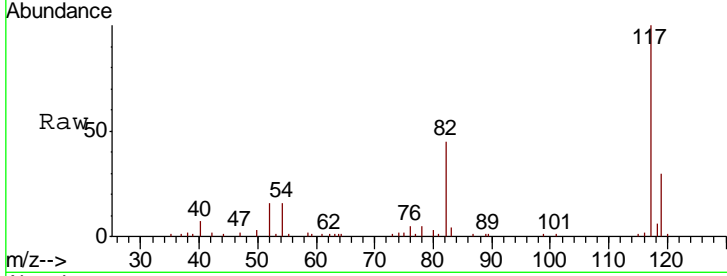




#63
 Chlorobenzene-d5
 Concen: 50.000 ug/l
 RT: 11.65 min Scan# 1654
 Delta R.T. -0.00 min
 Lab File: VD067567.D
 Acq: 09 Nov 2020 15:50

Instrument :
 MSVOA_D
 ClientSampled :
 361-CL

Tgt Ion	Resp	Lower	Upper
117	43386		
82	45.2	41.6	62.4
119	30.0	25.1	37.7



#72
 1,4-Dichlorobenzene-d4
 Concen: 50.000 ug/l
 RT: 13.58 min Scan# 1982
 Delta R.T. -0.01 min
 Lab File: VD067567.D
 Acq: 09 Nov 2020 15:50

Tgt Ion	Resp	Lower	Upper
152	19874		
115	60.4	29.3	88.0
150	155.0	0.0	338.2

